

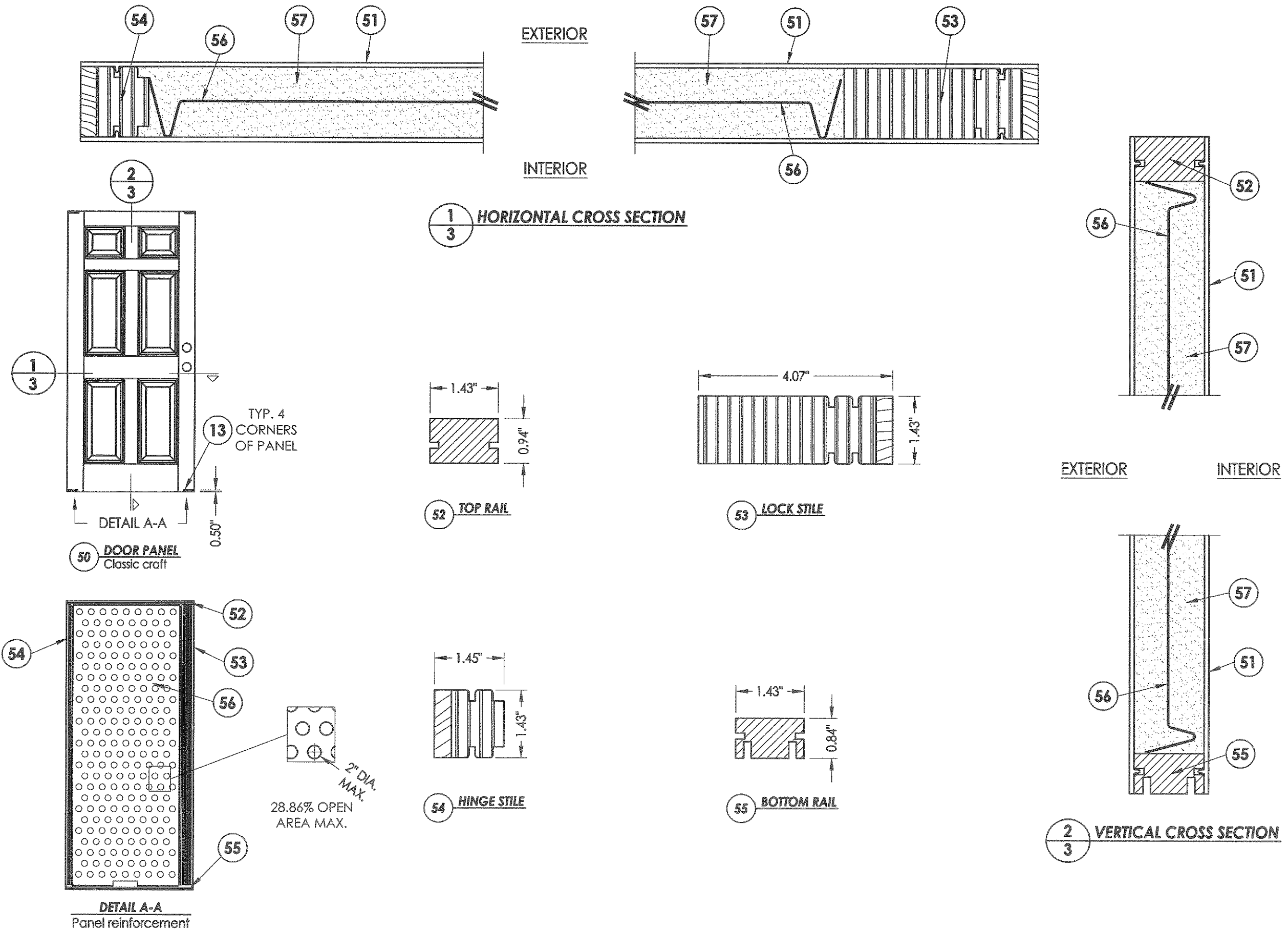
Documents Prepared By:
RW BUILDING CONSULTANTS, INC.
 P.O. Box 230 Valrico FL 33595
 Phone No.: 813.659.9197
 Florida Board of Professional Engineers
 Certificate of Authorization No. 9813
LFS 2.28.12
 Lyndon F. Schmidt, P.E. No. 43409

PRODUCT: THERMA-TRU FIBERGLASS DOOR
 PART OR ASSEMBLY: DOOR PANEL DETAILS (SMOOTH STAR)

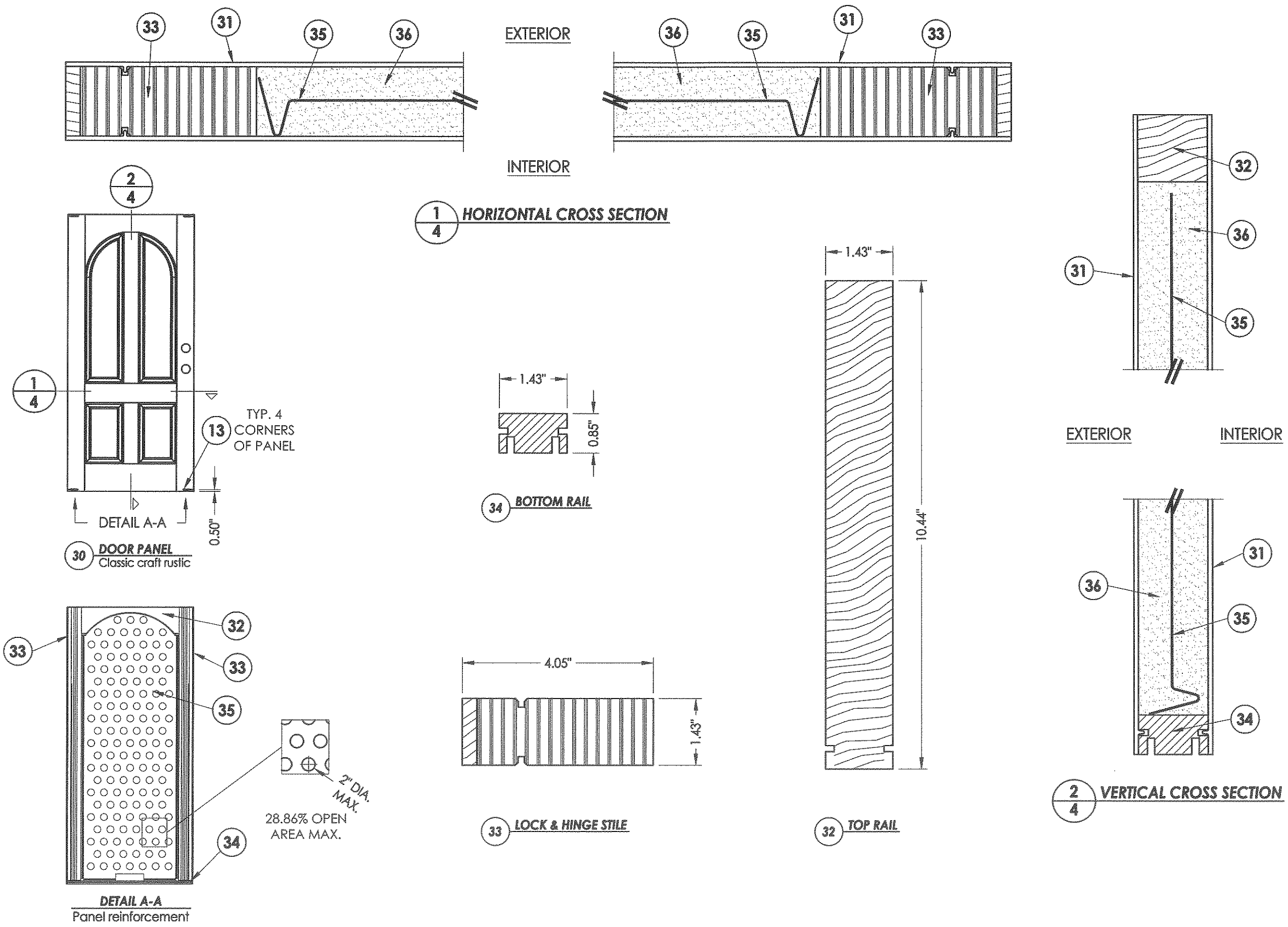
NO	DATE	BY	REVISIONS
1	2/27/12	RW	UPDATE TO 2010 FBC
		BY	

DATE:	05/22/08
SCALE:	N.T.S.
DWG. BY:	DWS
CHK. BY:	LFS
DRAWING NO.:	FL-8871.9
SHEET	2 OF 13

R:\A - Projects\Project Folders\Proj 1201-1300\pf 1233\ID. RWBC Drawings\2010\8871.1.-9\8871.6-9 Rev 1.dwg, 3.9



R:\A - Projects\Project Folders\Proj 1201-1300\pf 1233\DWG Drawings\2010\8871.1-9\8871.6-9 Rev 1.dwg, 4.9



Documents Prepared By: **RW** BUILDING CONSULTANTS, INC.
P.O. Box 230 Vairico FL 33595
Phone No.: 813.659.9197
Florida Board of Professional Engineers
Certificate Of Authorization No. 9813
Lyndon F. Schmidt, P.E. No. 43409

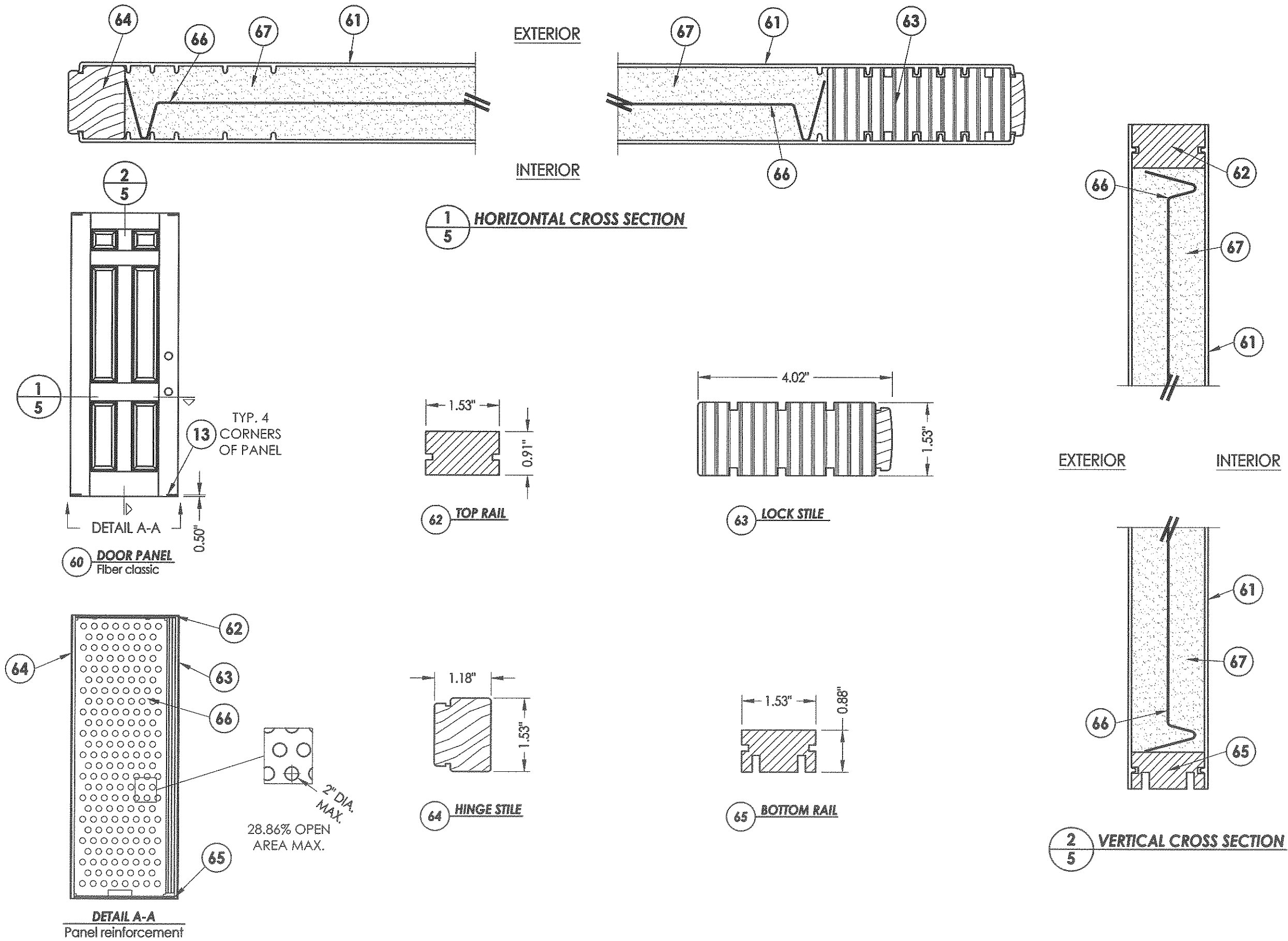
DATE: 05/22/08
SCALE: N.T.S.
DWG. BY: DWS
CHK. BY: LFS
DRAWING NO.: FL-8871.9
SHEET 4 OF 13

PRODUCT:	THERMA-TRU FIBERGLASS DOOR	
PART OR ASSEMBLY:	DOOR PANEL DETAILS (CLASSIC CRAFT RUSTIC)	
NO.	DATE	BY
1	2/27/12 UPDATE TO 2010 FBC	RW
2		BY

REVISIONS

© 2008 R.W. BUILDING CONSULTANTS INC.

R:\A - Projects\Project Folders\Proj 1201-1300\pf 1233\1D. RWBC Drawings\2010\8871.1-9\8871.6-9 Rev 1.dwg, 5.9



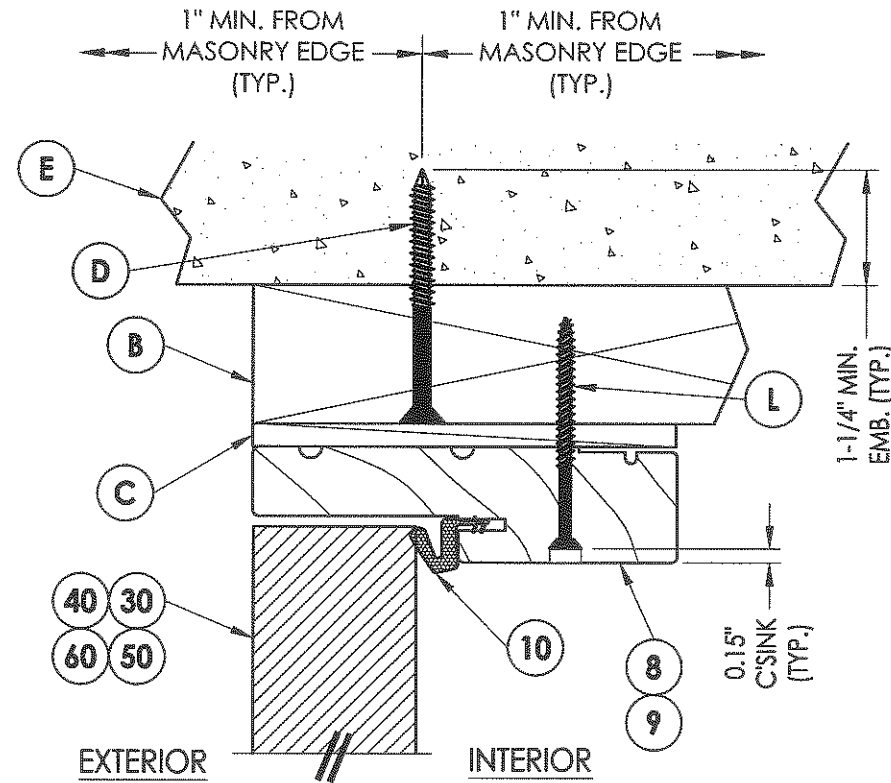
DATE:	05/22/08
SCALE:	N.T.S.
DWG. BY:	DWS
CHK. BY:	LFS
DRAWING NO.:	FL-8871.9
SHEET	5 OF 13

PRODUCT:	THERMA-TRU FIBERGLASS DOOR
PART OR ASSEMBLY:	DOOR PANEL DETAILS (FIBER CLASSIC)

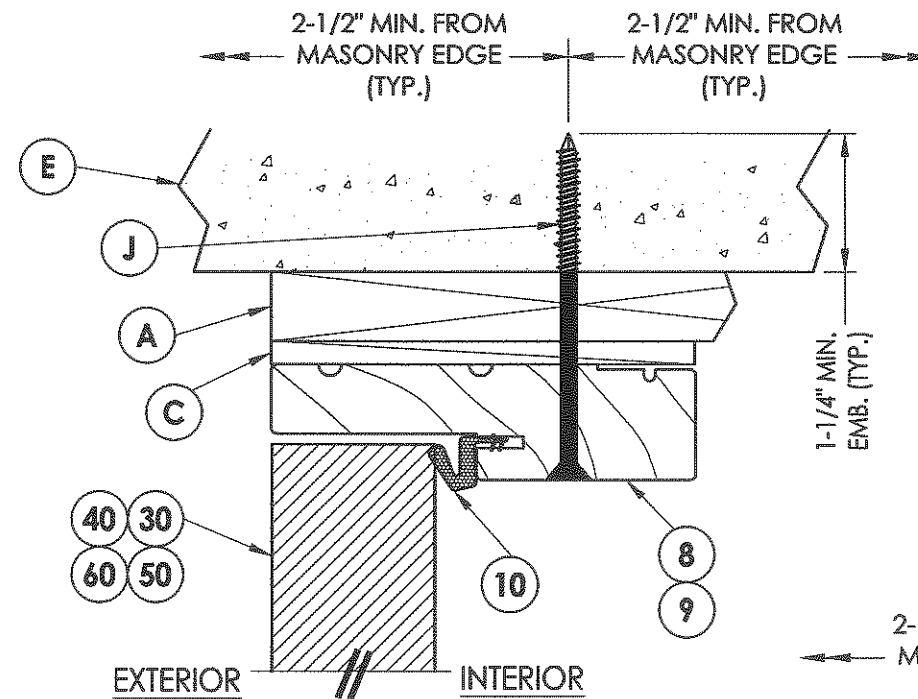
Documents Prepared By:
RW BUILDING CONSULTANTS, INC.
 P.O. Box 230 Valrico FL 33595
 Phone No.: 813.659.9197
 Florida Board of Professional Engineers
 Certificate Of Authorization No. 9813
RWS 2-28-12
 Lyndon F. Schmidt, P.E. No. 43409

© 2008 R.W. BUILDING CONSULTANTS INC.

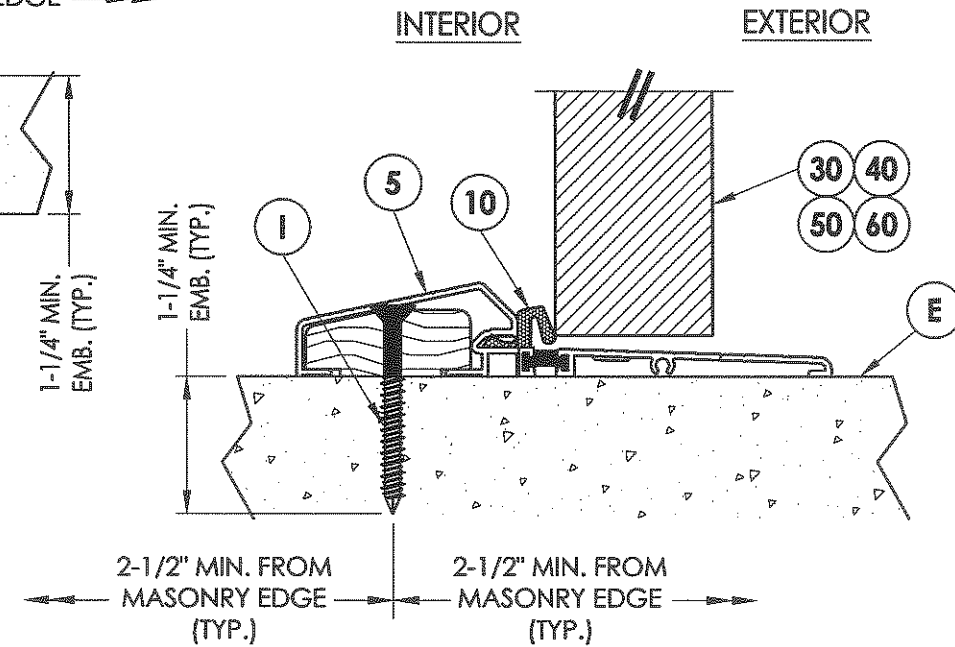
R:\A - Projects\Project Folders\Proj 1201-1300\pf 1233\D. RWBC Drawings\2010\8871.1-9\8871.6-9 Rev 1.dwg, 8.9



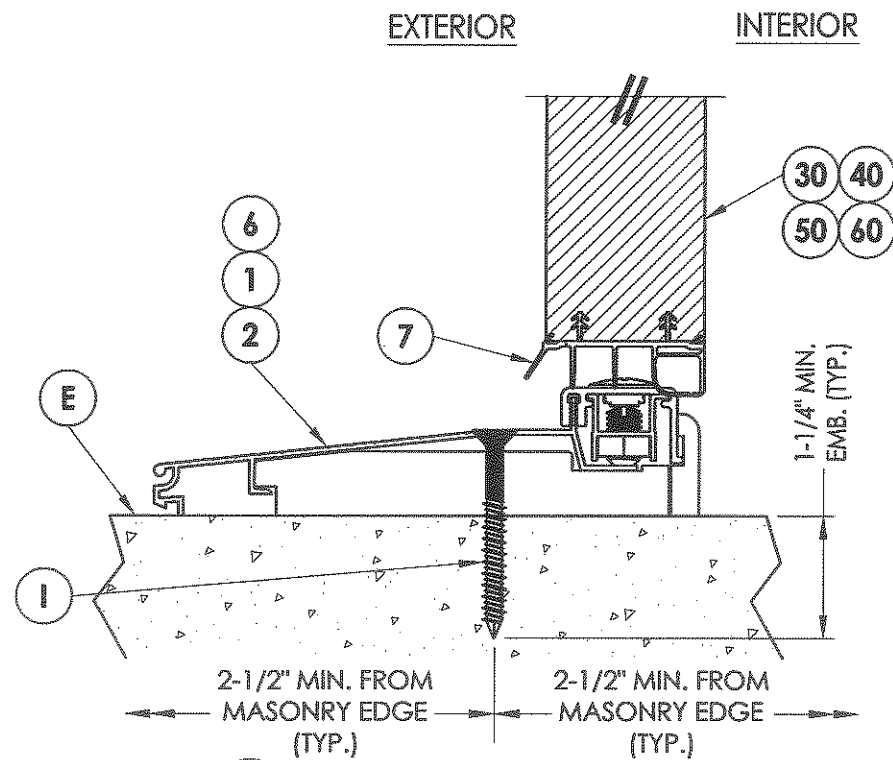
1 VERTICAL CROSS SECTION
8 Outswing shown - inswing also approved



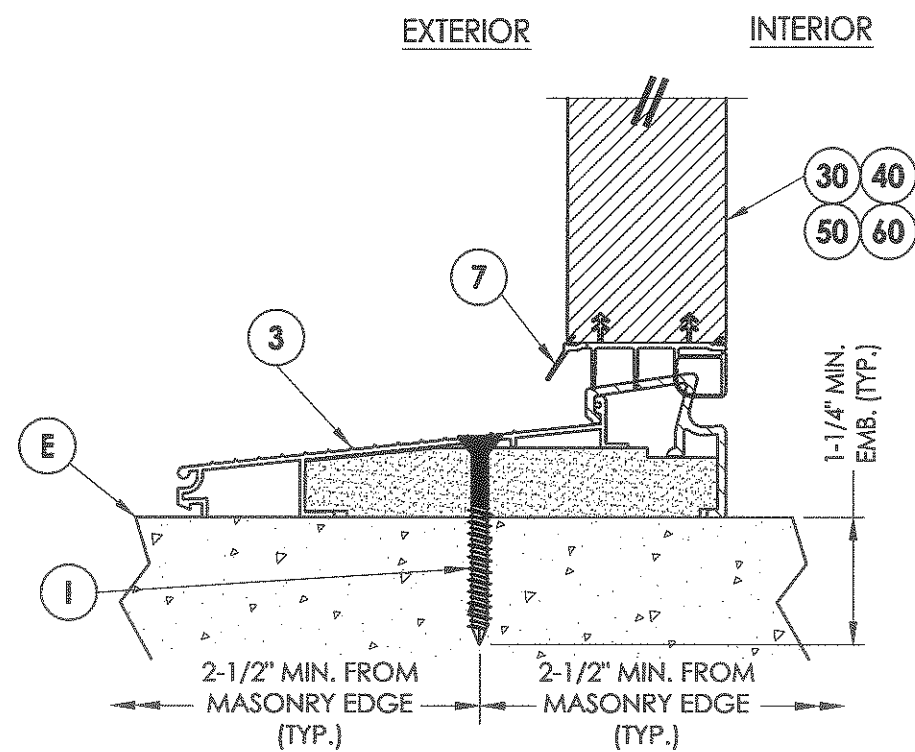
2 VERTICAL CROSS SECTION
8 Shown w/1X sub-buck



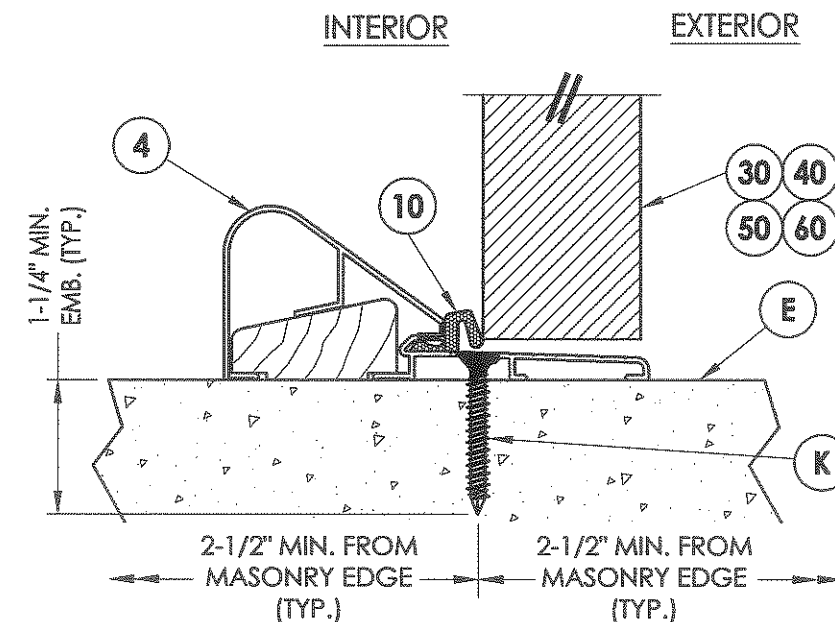
3 VERTICAL CROSS SECTION
8 Outswing configuration see general notes sheet 1 for "HVHZ" water infiltration requirements



4 VERTICAL CROSS SECTION
8 Inswing configuration see general notes sheet 1 for "HVHZ" water infiltration requirements



5 VERTICAL CROSS SECTION
8 Inswing configuration see general notes sheet 1 for "HVHZ" water infiltration requirements



6 VERTICAL CROSS SECTION
8 Outswing configuration see general notes sheet 1 for "HVHZ" water infiltration requirements

Documents Prepared By:

RW BUILDING CONSULTANTS, INC.
 P.O. Box 230 Valrico FL 33595
 Phone No.: 813.659.9197
 Florida Board of Professional Engineers
 Certificate of Authorization No. 9813
DFL 2.28.12
 Lyndon F. Schmidt, P.E. No. 43409

PRODUCT: THERMA-TRU FIBERGLASS DOOR

PART OR ASSEMBLY: VERTICAL CROSS SECTIONS

NO.	DATE	REVISIONS	BY
1	2/27/12	UPDATE TO 2010 FBC	RW

DATE: 05/22/08

SCALE: N.T.S.

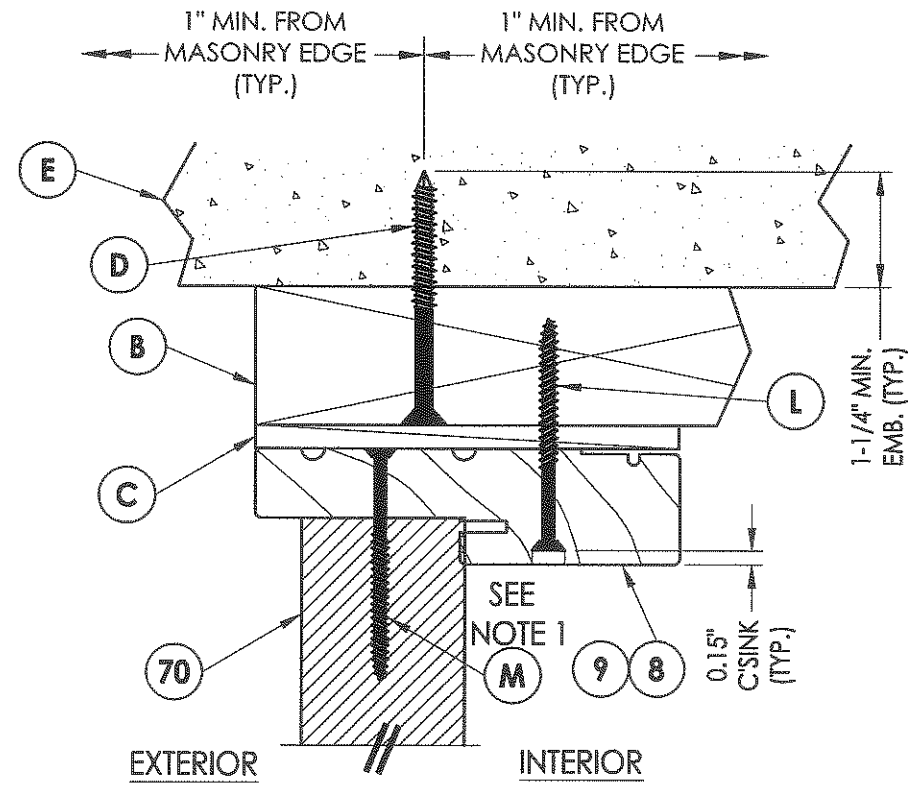
DWG. BY: DWS

CHK. BY: LFS

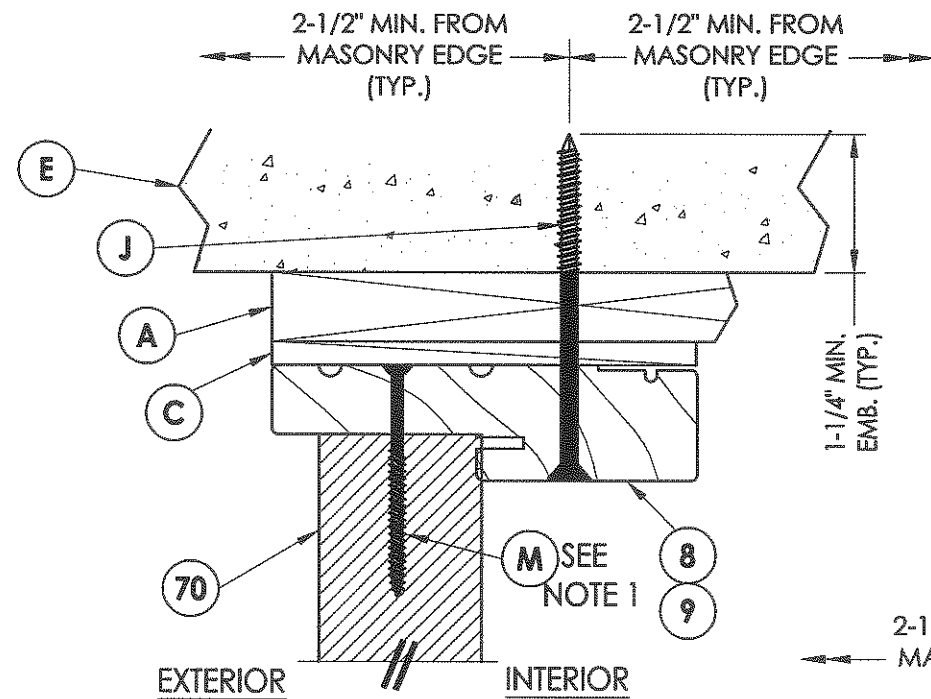
DRAWING NO.: FL-8871.9

SHEET 8 OF 13

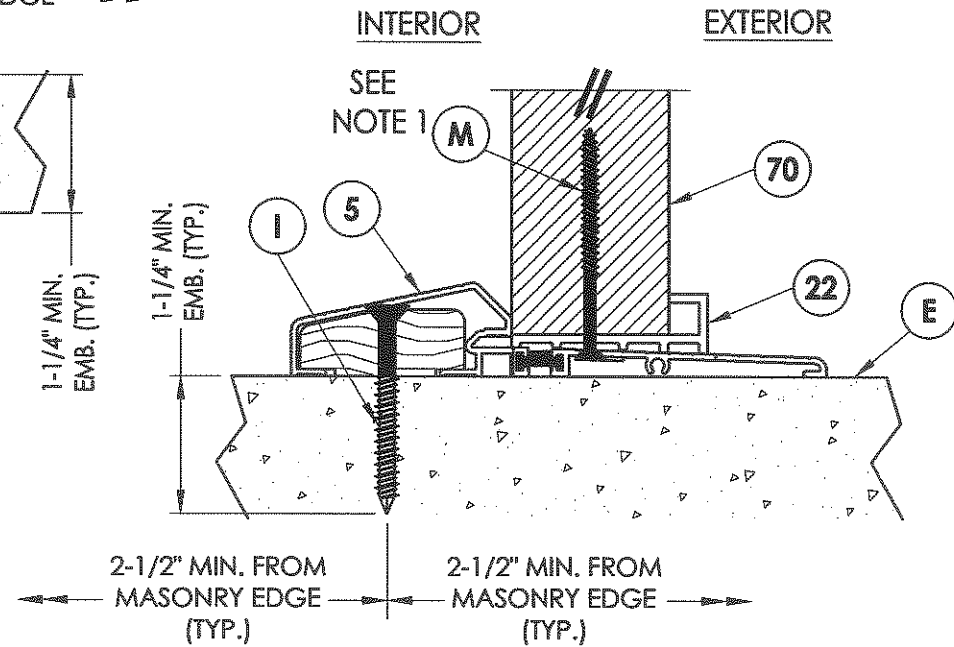
R:\A - Projects\Project Folders\Proj 1201-1300\pf 1233\ID. RWBC Drawings\2010\8871.1.1 - 9\8871.6-9 Rev 1.dwg, 9.9



1 VERTICAL CROSS SECTION
 9 Outswing shown - inswing also approved

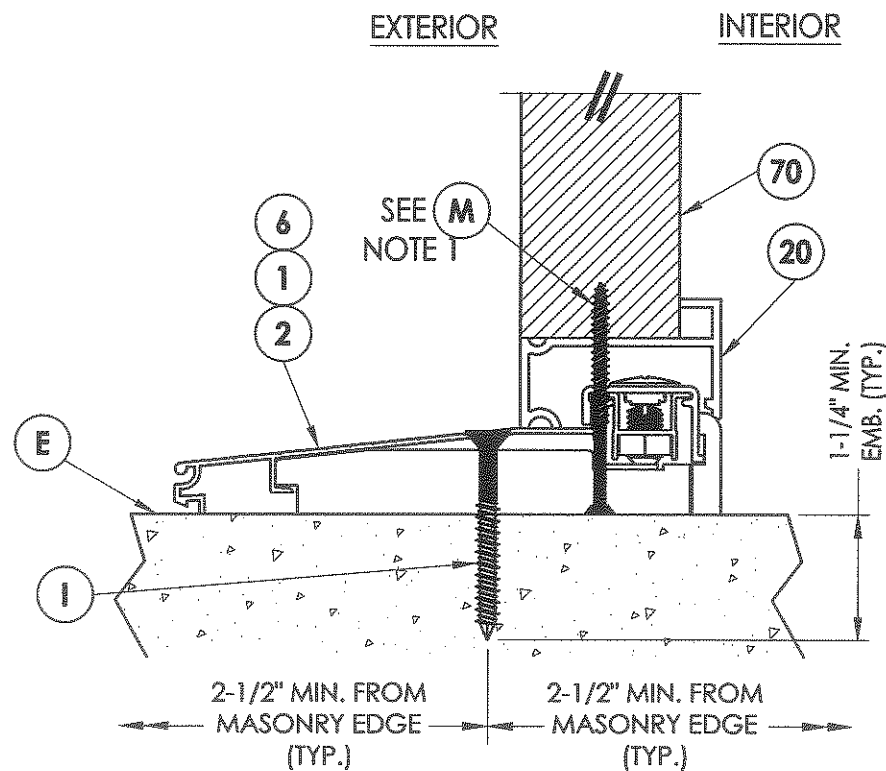


2 VERTICAL CROSS SECTION
 9 Shown w/1X sub-buck

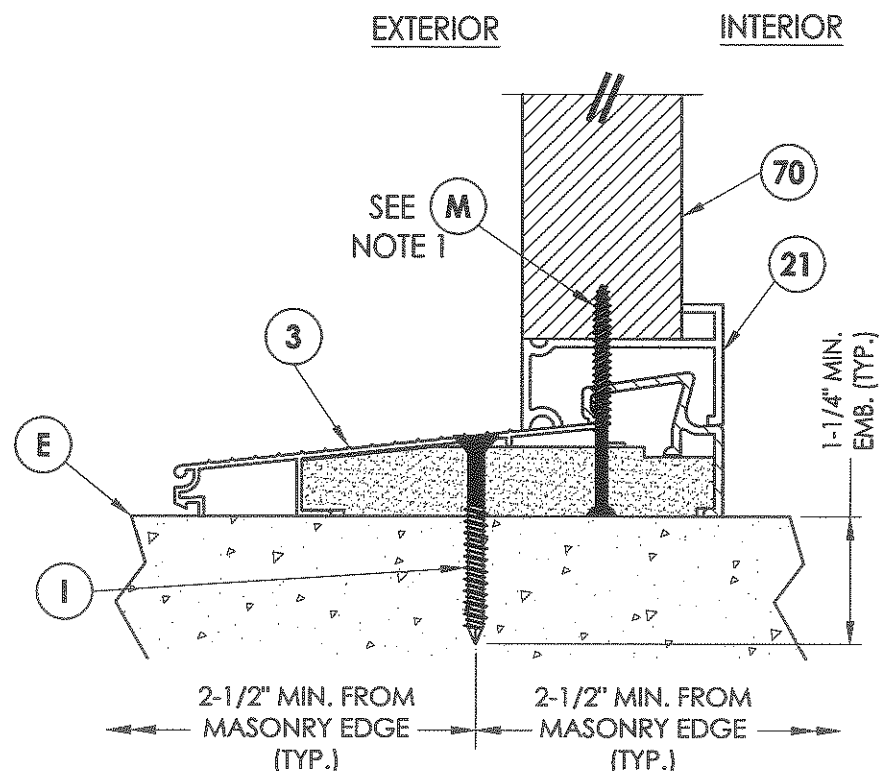


3 VERTICAL CROSS SECTION
 9 Outswing configuration

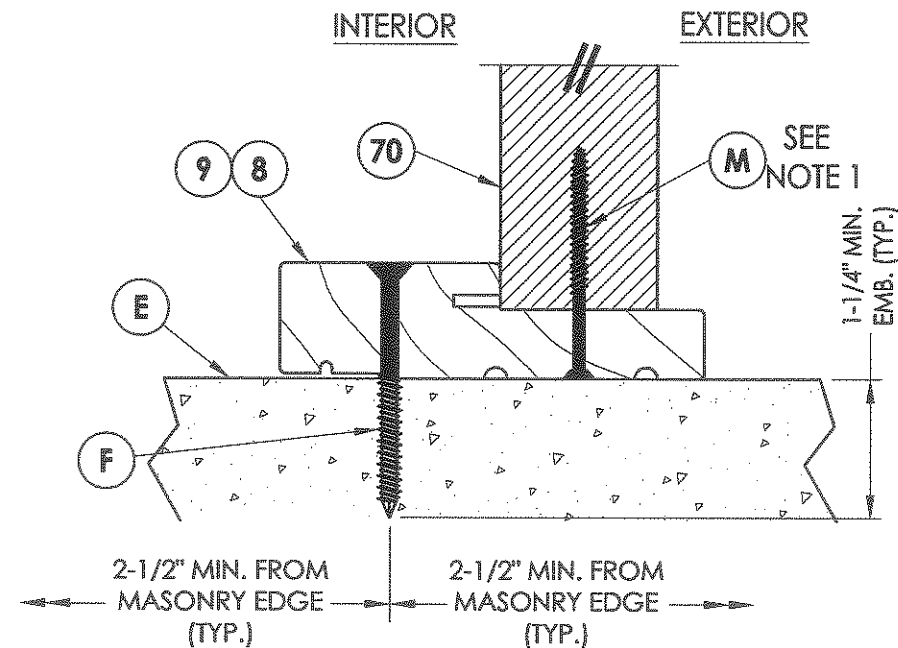
NOTE:
 1. Screws thru head and sill jamb located 3" from each end and on center line.



4 VERTICAL CROSS SECTION
 9 Inswing configuration



5 VERTICAL CROSS SECTION
 9 Inswing configuration

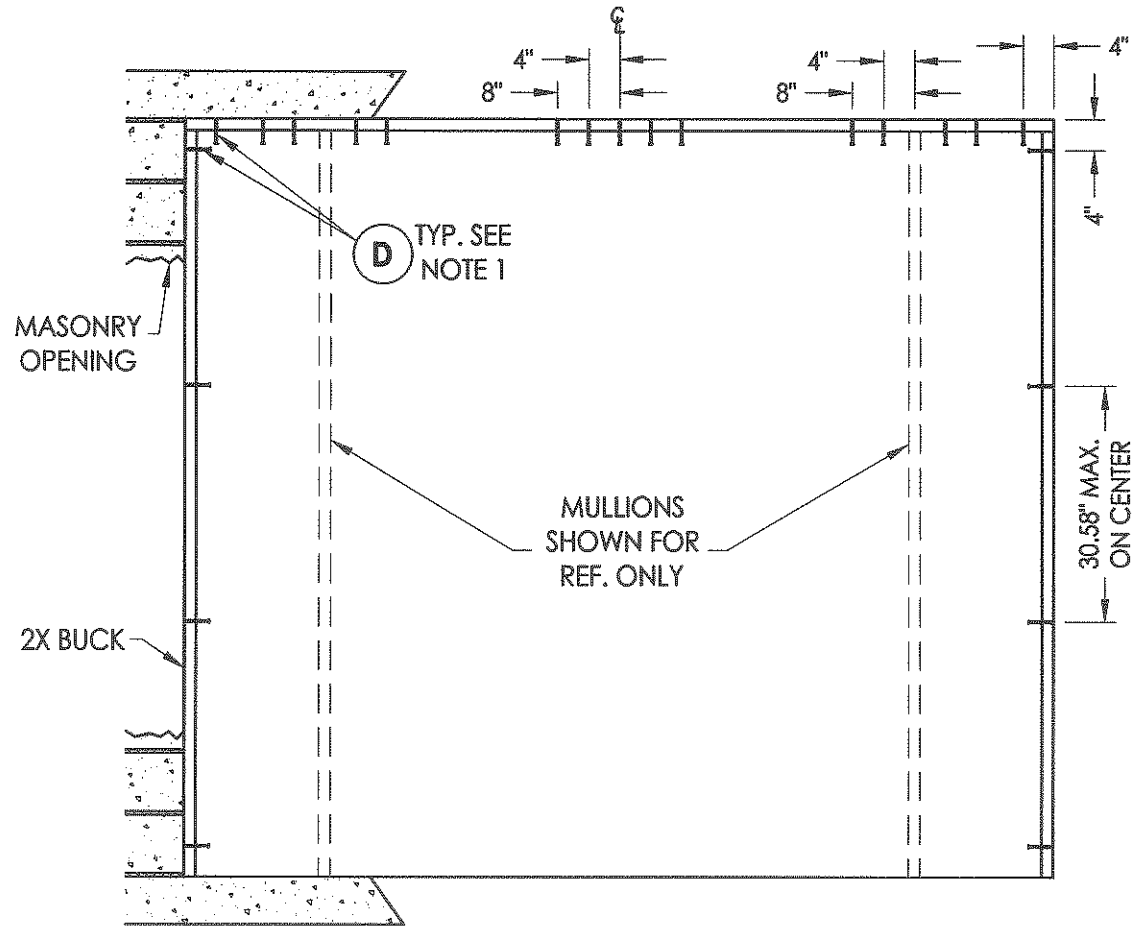


6 VERTICAL CROSS SECTION
 9 Outswing configuration

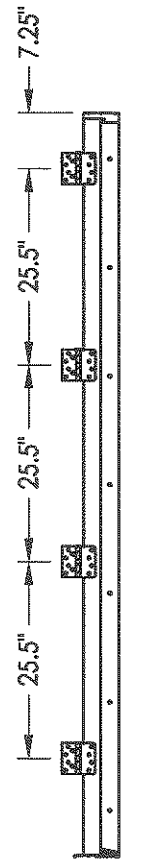
Documents Prepared By:		RWBC BUILDING CONSULTANTS, INC. P.O. Box 230 Valrico FL 33595 Phone No.: 813.659.9197	
PRODUCT:		THERMA-TRU FIBERGLASS DOOR	
PART OR ASSEMBLY:		VERTICAL CROSS SECTIONS	
DATE:	05/22/08	BY:	RW
SCALE:	N.T.S.	DATE:	2/27/12
DWG. BY:	DWS	REVISIONS:	
CHK. BY:	LFS	NO.	1
DRAWING NO.:	FL-8871.9	DATE:	2/27/12
SHEET	9 OF 13		

© 2008 R.W. BUILDING CONSULTANTS INC.

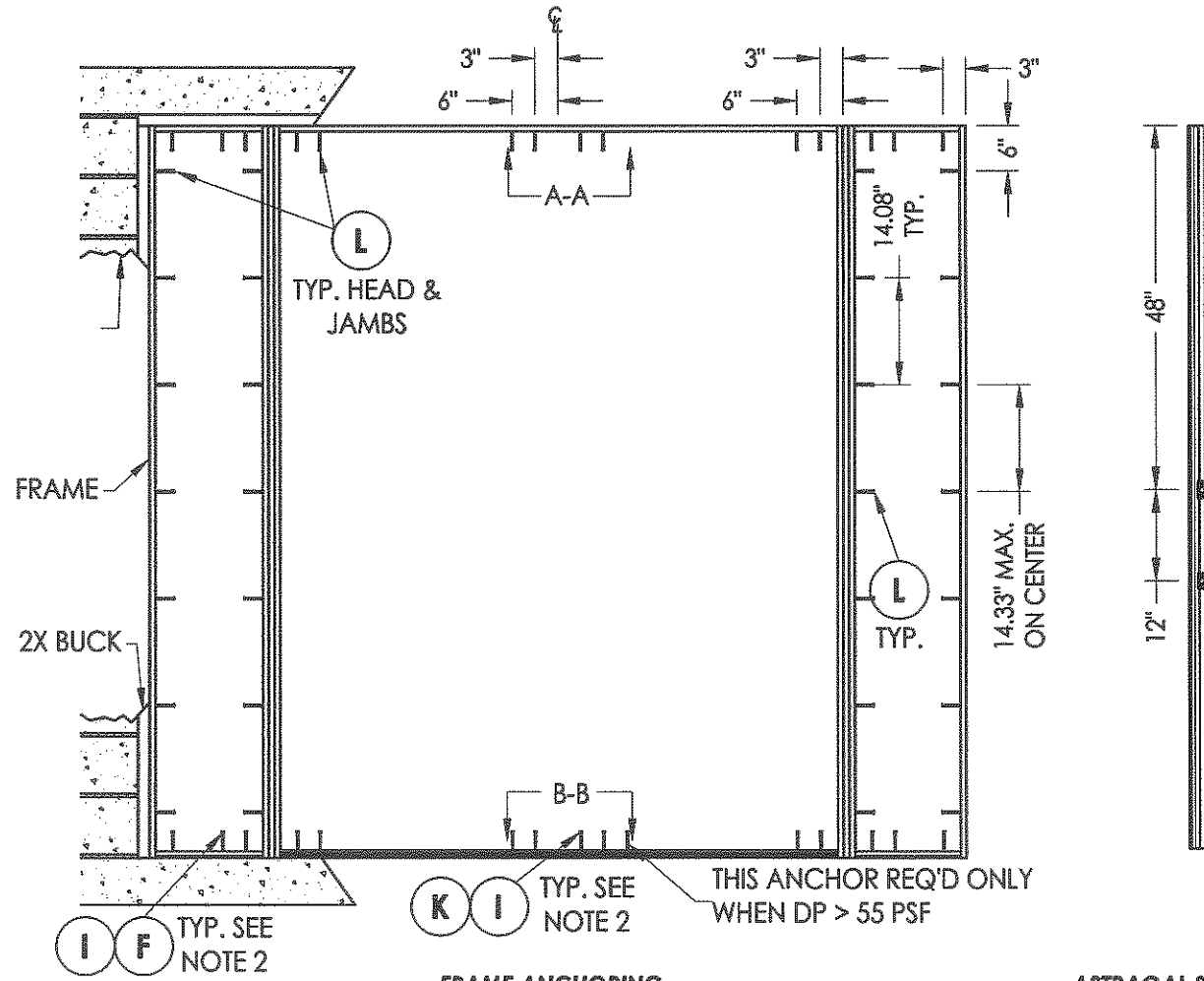
P:\A - Projects\Project Folders\Proj 1201-1300\pf 1233\DWG\RWBC Drawings\2010\8871.1-9\8871.6-9 Rev 1.dwg, 10.9



BUCK ANCHORING



HINGE JAMB

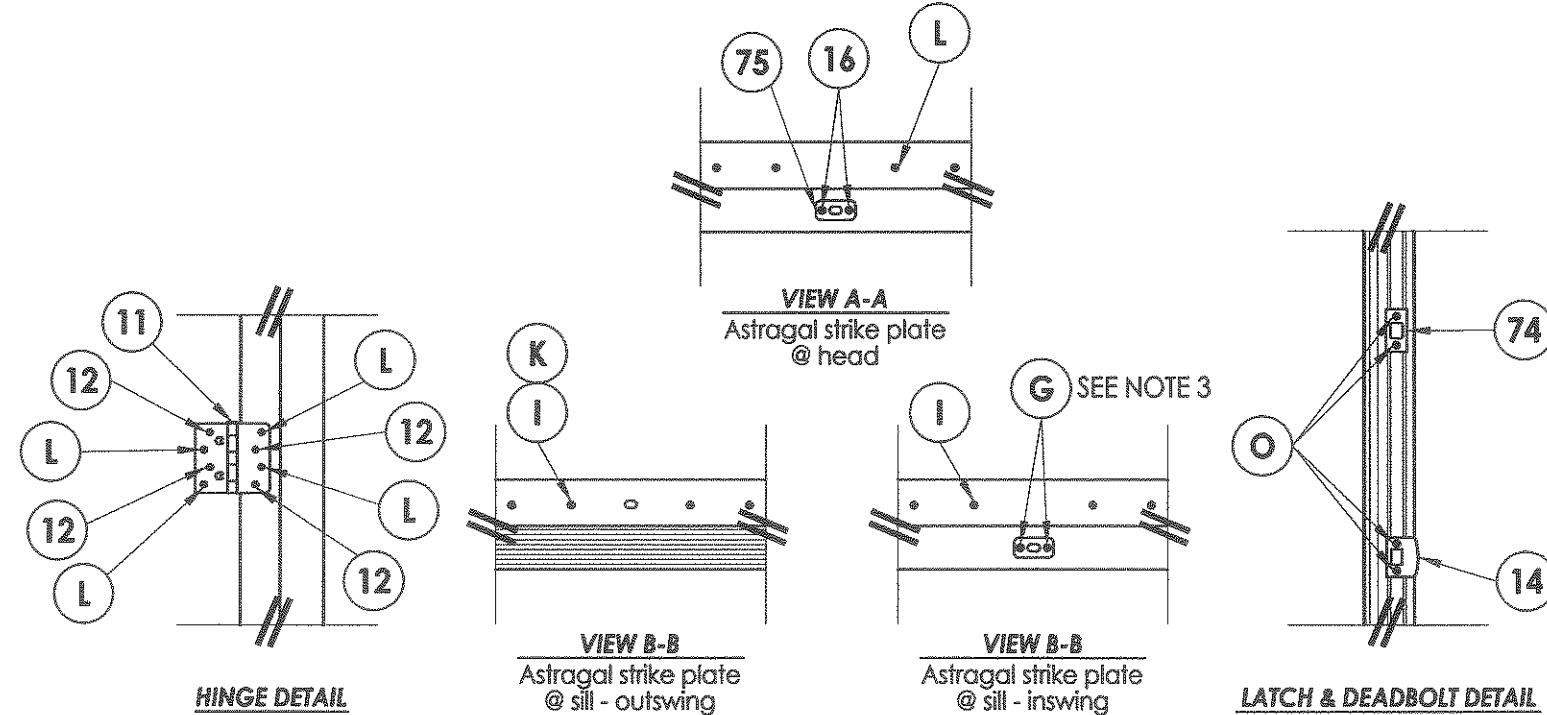


FRAME ANCHORING
Masonry 2X buck construction

ASTRAGAL STRIKE JAMB

NOTES:

- 1/4" Elco Concrete screws anchoring 2x buck require a minimum 1" clearance to masonry edges, a 1-1/4" minimum embedment and a minimum 4" clearance to adjacent concrete screws. Substitution of equal concrete screws from a different supplier may have different edge distance and center distance requirements. Concrete screw locations at the corners, mullions centerlines and at astragal locations may be adjusted to maintain the minimum edge distance to mortar joints. If Concrete screw locations noted as "MAX. ON CENTER" must be adjusted to maintain the minimum edge distance to mortar joints, additional Concrete screws may be required to ensure the maximum on center dimension is not exceeded.
- 1/4" ITW concrete screws anchoring frame and/or sill require a minimum 2-1/2" clearance to masonry edges, a 1-1/4" minimum embedment and a minimum 3" clearance to adjacent concrete screws. Substitution of equal concrete screws from a different supplier may have different edge distance and center distance requirements. Concrete screw locations at the corners, mullions centerlines and at astragal locations may be adjusted to maintain the minimum edge distance to mortar joints. If Concrete screw locations noted as "MAX. ON CENTER" must be adjusted to maintain the minimum edge distance to mortar joints, additional Concrete screws may be required to ensure the maximum on center dimension is not exceeded.
- 3/16" ITW concrete screws anchoring frame and/or sill require a minimum 2-5/8" clearance to masonry edges, a 1-1/4" minimum embedment and a minimum 2-1/4" clearance to adjacent concrete screws unless otherwise noted by concrete screw manufacturer.

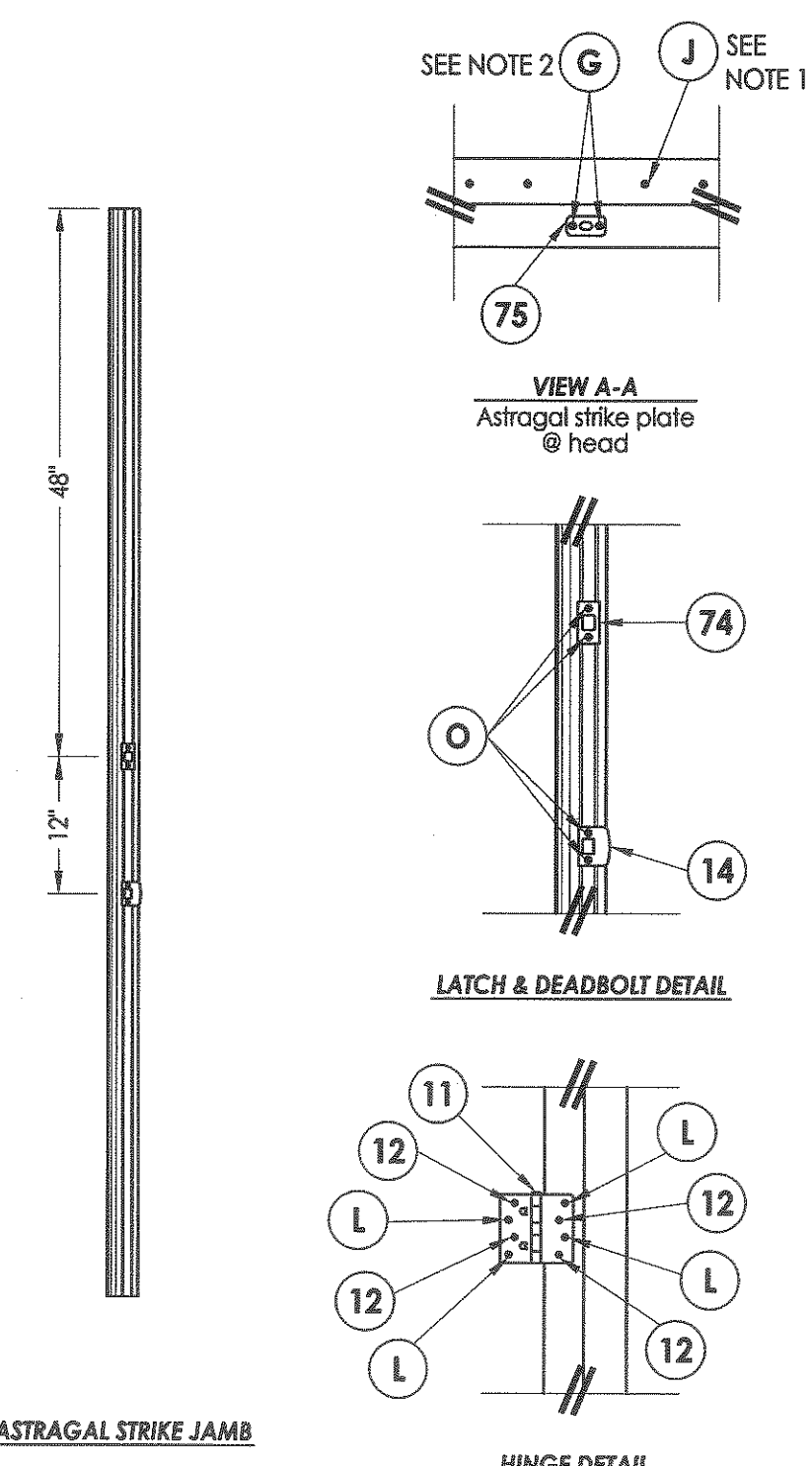
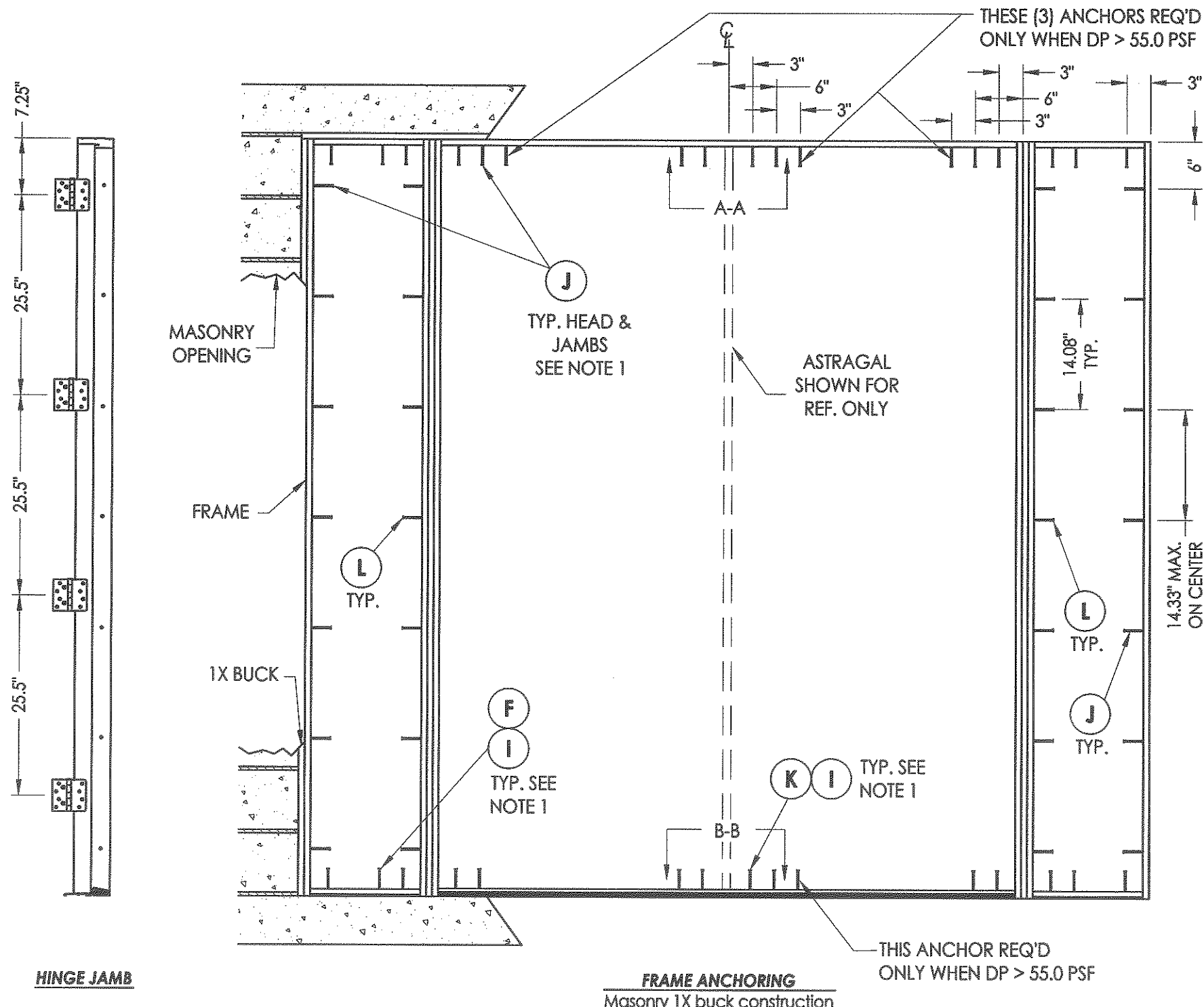


Documents Prepared By:
RW BUILDING CONSULTANTS, INC.
 P.O. Box 230 Valrico FL 33595
 Phone No.: 813.659.9197
 Florida Board of Professional Engineers
 Certificate Of Authorization No. 9813
 Lyndon F. Schmidt, P.E. No. 43409

PRODUCT: THERMA-TRU FIBERGLASS DOOR
 PART OR ASSEMBLY: BUCK & FRAME ANCHORING 2X BUCK MASONRY CONSTRUCTION

NO.	DATE	BY	REVISIONS
1	2/27/12	RW	UPDATE TO 2010 FBC

DATE: 05/22/08
 SCALE: N.T.S.
 DWG. BY: DWS
 CHK. BY: LFS
 DRAWING NO.: FL-8871.9
 SHEET 10 OF 13



HINGE JAMB

FRAME ANCHORING
Masonry 1X buck construction

ASTRAGAL STRIKE JAMB

NOTES:

- 1/4" ITW concrete screws anchoring frame and/or sill require a minimum 2-1/2" clearance to masonry edges, a 1-1/4" minimum embedment and a minimum 3" clearance to adjacent concrete screws. Substitution of equal concrete screws from a different supplier may have different edge distance and center distance requirements. Concrete screw locations at the corners, mullions centerlines and at astragal locations may be adjusted to maintain the minimum edge distance to mortar joints. If Concrete screw locations noted as "MAX. ON CENTER" must be adjusted to maintain the minimum edge distance to mortar joints, additional Concrete screws may be required to ensure the maximum on center dimension is not exceeded.
- 3/16" ITW concrete screws anchoring frame and/or sill require a minimum 2-5/8" clearance to masonry edges, a 1-1/4" minimum embedment and a minimum 2-1/4" clearance to adjacent concrete screws unless otherwise noted by concrete screw manufacturer.

Documents Prepared By:		BUILDING CONSULTANTS, INC. P.O. Box 230 Valrico FL 33595 Phone No.: 813.659.9197 Florida Board of Professional Engineers Certificate Of Authorization No. 9813 Lyndon F. Schmidt, P.E. No. 43409	
PRODUCT:	THERMA-TRU FIBERGLASS DOOR		
PART OR ASSEMBLY:	FRAME ANCHORING 1X BUCK MASONRY CONSTRUCTION		
NO.	DATE	BY	REVISIONS
1	2/27/12	RW	UPDATE TO 2010 FBC
DATE: 05/22/08			
SCALE: N.T.S.			
DWG. BY: DWS			
CHK. BY: LFS			
DRAWING NO.: FL-8871.9			
SHEET 11 OF 13			

BILL OF MATERIALS

ITEM	DESCRIPTION	MATERIAL	ITEM	DESCRIPTION	MATERIAL
A	1X BUCK SG >= 0.55	WOOD	30	CLASSIC CRAFT RUSTIC DOOR - SEE DOOR PANEL DETAIL SHEET FOR DETAILS	-
B	2X BUCK SG >= 0.55	WOOD	31	DOOR SKIN 0.090" THK. (CC RUSTIC) Fy = 6,000 PSI MIN.	FIBERGLASS
C	MAX. 1/4" SHIM SPACE	WOOD	32	TOP RAIL (CLASSIC CRAFT RUSTIC)	WOOD
D	1/4" X 2-3/4" PFH ELCO CONCRETE SCREW	STEEL	33	LOCK & HINGE STILE (CLASSIC CRAFT RUSTIC)	WOOD/LVL
E	MASONRY - 3,192 PSI MIN. CONCRETE CONFORMING TO ACI 301 OR HOLLOW BLOCK CONFORMING TO ASTM C90	CONCRETE	34	BOTTOM RAIL (CLASSIC CRAFT RUSTIC)	COMP.
			35	PANEL REINFORCEMENT 0.023" THK. (CLASSIC CRAFT RUSTIC)	STEEL
F	1/4" X 2-3/4" PFH ITW CONCRETE SCREW	STEEL	36	FOAM CORE	POLYURETHANE
G	3/16" X 3-1/4" PFH ITW CONCRETE SCREW	STEEL	40	SMOOTH STAR DOOR - SEE DOOR PANEL DETAIL SHEET FOR DETAILS	-
I	1/4" X 2-1/4" PFH ITW CONCRETE SCREW	STEEL	41	DOOR SKIN 0.072" THK. (SMOOTH STAR) Fy = 6,000 PSI MIN.	FIBERGLASS
J	1/4" X 3-3/4" PFH ITW CONCRETE SCREW	STEEL	42	TOP RAIL (SMOOTH STAR)	COMP.
K	1/4" X 1-3/4" PFH ITW CONCRETE SCREW	STEEL	43	LOCK STILE (SMOOTH STAR)	WOOD/LVL
L	#10 X 2-1/2" PFH WOOD SCREW	STEEL	44	HINGE STILE (SMOOTH STAR)	WOOD
M	#9 X 2-1/2" PFH WOOD SCREW	STEEL	45	BOTTOM RAIL (SMOOTH STAR)	COMP.
O	#8 X 3" PFH SCREW	STEEL	46	PANEL REINFORCEMENT 0.023" THK. (SMOOTH STAR)	STEEL
P	#10 X 1-1/2" PPH SCREW ASTRAGAL TO PANEL	STEEL	47	FOAM CORE	POLYURETHANE
Q	1X MULLION SG ≥ 0.42	WOOD	48	SIDELITE SKIN (SMOOTH STAR)	FIBERGLASS
1	INSWING ADJUSTABLE THRESHOLD (IS300AJ)	ALUM./WOOD	49	LITE FRAME (SMOOTH STAR)	PVC
2	INSWING THRESHOLD (IS300HP5)	ALUM./COMP.	50	CLASSIC CRAFT DOOR - SEE DOOR PANEL DETAIL SHEET FOR DETAILS	-
3	INSWING SELF ADJUST THERMAL BREAK THRESHOLD (ISP30M)	ALUM./COMP.	51	DOOR SKIN 0.090" THK. (CLASSIC CRAFT) Fy = 6,000 PSI MIN.	FIBERGLASS
4	OUTSWING COASTAL THRESHOLD	ALUM./WOOD	52	TOP RAIL (CLASSIC CRAFT)	COMP.
5	OUTSWING STANDARD THRESHOLD	ALUM./WOOD	53	LOCK STILE (CLASSIC CRAFT)	WOOD/LVL
6	INSWING THRESHOLD	ALUM./COMP.	54	HINGE STILE (CLASSIC CRAFT)	WOOD/LVL
7	DOOR BOTTOM SWEEP	VINYL	55	BOTTOM RAIL (CLASSIC CRAFT)	COMP.
8	JAMB (PINE) SG ≥ 0.42	WOOD	56	PANEL REINFORCEMENT 0.023" THK. (CLASSIC CRAFT)	STEEL
9	JAMB (OAK) SG ≥ 0.42	WOOD	57	FOAM CORE	POLYURETHANE
10	WEATHERSTRIP	FOAM	58	SIDELITE SKIN (CLASSIC CRAFT)	FIBERGLASS
11	HINGE	STEEL	60	FIBER CLASSIC DOOR - SEE DOOR PANEL DETAIL SHEET FOR DETAILS	-
12	#10 X 3/4" PFH SCREW	STEEL	61	DOOR SKIN 0.137" THK. (FIBER CLASSIC) Fy = 6,000 PSI MIN.	FIBERGLASS
13	#9 X 3" PFH WOOD SCREW	STEEL	62	TOP RAIL (FIBER CLASSIC)	COMP.
14	LATCH STRIKE PLATE	STEEL	63	LOCK STILE (FIBER CLASSIC)	WOOD/LVL
16	#8 X 2-1/2" PFH SCREW	STEEL	64	HINGE STILE (FIBER CLASSIC)	WOOD
18	KWIKSET 200 SERIES PASSAGE LOCK	STEEL	65	BOTTOM RAIL (FIBER CLASSIC)	COMP.
19	KWIKSET 600 SERIES DEADBOLT	STEEL	66	PANEL REINFORCEMENT 0.023" THK. (FIBER CLASSIC)	STEEL
20	INSWING SIDELITE SPACER FOR HP THRESHOLD (DB14HPA)	PVC	67	FOAM CORE	POLYURETHANE
21	INSWING SIDELITE SPACER FOR SELF ADJUST THRESHOLD (DB14)	PVC	68	SIDELITE SKIN (FIBER CLASSIC)	FIBERGLASS
22	OUTSWING SIDELITE SPACER	PVC	69	LITE FRAME (FIBER CLASSIC)	PVC
23	#6 X 1-3/4" PFH SCREW (LITE FRAME)	STEEL	70	SIDELITE - SEE SIDELITE PANEL DETAIL SHEET FOR DETAILS	-
24	GLAZING COMPOUND	SILICONE	71	SIDELITE TOP RAIL	COMP.
25	SEALANT	SILICONE	72	SIDELITE STILE	WOOD
26	#9 X 1" PPH SCREW (LITE FRAME)	STEEL	73	SIDELITE BOTTOM RAIL	COMP.
27	ASTRAGAL	ALUMINUM	74	DEADBOLT STRIKE PLATE	STEEL
28	ASTRAGAL FLUSH BOLT	STEEL	75	ASTRAGAL STRIKE PLATE	STEEL
29	ASTRAGAL FLUSH BOLT RETAINER	ALUMINUM			

Documents Prepared By:
RW BUILDING CONSULTANTS, INC.
 P.O. Box 230 Vairico FL 33595
 Phone No.: 813.659.9197
 Florida Board of Professional Engineers
 Certificate Of Authorization No. 9813
CFR 2-28-12
 Lyndon F. Schmidt, P.E. No. 43409

PRODUCT: THERMA-TRU FIBERGLASS DOOR
 PART OR ASSEMBLY: BILL OF MATERIALS

NO	DATE	BY	REVISIONS
1	2/27/12	RW	UPDATE TO 2010 FBC

DATE: 05/22/08
 SCALE: N.T.S.
 DWG. BY: DWS
 CHK. BY: LFS
 DRAWING NO.: FL-8871.9
 SHEET 13 OF 13