

FENETEX

FENETEX HURRICANE SCREENS LARGE MISSILE IMPACT HVHZ & NON-HVHZ

NON-SITE-SPECIFIC STRUCTURAL PERFORMANCE
EVALUATION. A DESIGN PROFESSIONAL SHALL BE
RESPONSIBLE FOR CERTIFYING THE APPLICATION OF
THIS INFORMATION TO ANY SITE-SPECIFIC LOCATION.

RICHARD NEET, P.E.
PE# 86488 CA# 9885

FL

SPACE RESERVED FOR
CERTIFYING ENGINEER'S
DIGITAL OR PHYSICAL SEAL
& DATE OF CERTIFICATION

JANUARY 4, 2024

COPIES WITHOUT
ORIGINAL PE SEAL NOT
VALID FOR PERMIT

DRAWING INDEX	
SHEET NO.	DESCRIPTION
1	GEN NOTES / DESCRIPTIONS
2	RETRACTABLE SCREEN COMPONENTS
3	HORIZONTAL SECTION VIEWS
4	VERTICAL SECTION VIEWS
5	DESIGN SCHEDULE (WALL MOUNT)
6	DESIGN SCHEDULE (BUILDOUT MOUNT TYPE 1)
7	DESIGN SCHEDULE (BUILDOUT MOUNT TYPE 2)
8	DESIGN SCHEDULE (INSIDE MOUNT)
9	MULLION DIRECTIVE
10	MULLION SCHEDULE (EXTERIOR)
11	MULLION SCHEDULE (INTERIOR)
12	MULLION END ATTACHMENTS
13	REMOVABLE SCREEN OPTION

REFERENCE THE DESIGN SCHEDULES HEREIN FOR MAXIMUM ALLOWABLE
SPAN/PRESSURE COMBINATIONS AND ANCHORAGE TO HOST STRUCTURE

GENERAL NOTES

- THIS SYSTEM HAS BEEN TESTED AND EVALUATED AS A LARGE MISSILE IMPACT PROTECTIVE SYSTEM IN ACCORDANCE WITH THE FLORIDA BUILDING/RESIDENTIAL CODE EIGHTH EDITION (2023) FOR USE INSIDE AND OUTSIDE THE HIGH VELOCITY HURRICANE ZONE (HVHZ) PER ASTM STANDARDS E330, E1886, E1996 & PER TAS 201, 202 & 203.
- NO 33-1/3% INCREASE IN ALLOWABLE STRESS HAS BEEN USED IN THE DESIGN OF THIS SYSTEM. WIND LOAD DURATION FACTOR $C_d=1.6$ HAS BEEN USED FOR WOOD ANCHOR DESIGN.
- POSITIVE AND NEGATIVE DESIGN PRESSURES CALCULATED FOR USE WITH THIS SYSTEM SHALL BE DETERMINED BY OTHERS ON A JOB-SPECIFIC BASIS IN ACCORDANCE WITH THE GOVERNING CODE. SITE-SPECIFIC PRESSURE REQUIREMENTS AS DETERMINED IN ACCORDANCE WITH ASCE 7-22 SHALL BE LESS THAN OR EQUAL TO THE POSITIVE OR NEGATIVE DESIGN PRESSURE CAPACITY VALUES LISTED HEREIN FOR ANY ASSEMBLY AS SHOWN.
- DESIGN PRESSURES NOTED HEREIN ARE BASED ON TESTED DESIGN PRESSURES DIVIDED BY A 1.5 SAFETY FACTOR.
- THE SYSTEM DETAILED HEREIN IS GENERIC AND DOES NOT PROVIDE INFORMATION FOR A SPECIFIC SITE. FOR SITE CONDITIONS DIFFERENT FROM THE CONDITIONS DETAILED HEREIN, A LICENSED ENGINEER OR REGISTERED ARCHITECT SHALL PREPARE SITE SPECIFIC DOCUMENTS FOR USE IN CONJUNCTION WITH THIS DOCUMENT.
- OPERABILITY OF ROLL-UP MECHANISM AND HOOD ASSEMBLY ARE NOT PART OF THIS APPROVAL.
- THIS DOCUMENT CONTAINS INFORMATION RELEVANT TO THE NECESSARY STRUCTURAL REQUIREMENTS OF THE SYSTEM INSTALLATION. COMPONENTS AND FASTENERS NOT REFERENCED WHICH ARE PART OF THE INTERNAL FABRICATION OF THE SPECIFIED SYSTEMS OR ASSEMBLIES SHALL BE PER MANUFACTURER PUBLISHED SPECIFICATIONS.
- PERMIT HOLDER SHALL VERIFY THE ADEQUACY OF THE EXISTING STRUCTURE TO WITHSTAND SUPERIMPOSED LOADS. WOOD BUCKS (BY OTHERS) SHALL BE ANCHORED PROPERLY TO TRANSFER LOADS TO THE EXISTING STRUCTURE.
- ALL EXTRUSIONS SHALL BE MINIMUM 6063-T6 ALUMINUM ALLOY, UNLESS NOTED OTHERWISE.
- SCREENS SHALL HAVE ONE PERMANENT LABEL PER SCREEN WITH THE FOLLOWING MINIMUM INFORMATION:
FENETEX
JACKSONVILLE, FL
MISSILE LEVEL D, WIND ZONE 4
TAS 201, 202 & 203; ASTM E1886, E1996 & E330
FLORIDA PRODUCT APPROVAL NUMBER
- ALL BOLTS & WASHERS SHALL BE ZINC COATED STEEL, GALVANIZED STEEL, OR STAINLESS STEEL WITH A MINIMUM TENSILE YIELD STRENGTH OF 60 KSI.
- ALL DISSIMILAR MATERIALS SHALL BE INSULATED FROM ELECTROLYSIS AS PRESCRIBED IN THE ABOVE-NOTED BUILDING CODE.
- NON-SPAN EDGES DO NOT REQUIRE SEWN HEMS OR ADDITIONAL REINFORCEMENT.
- WITHIN THE HVHZ, PERMANENT SCREENS SHALL BE INSIDE THE OPENING AND REMOVABLE SCREENS SHALL BE DEPLOYED ONLY DURING HIGH WIND EVENTS. REMOVABLE SCREENS SHALL BE STORED AWAY WHEN NOT IN USE.
- SCREENS SHALL COVER ENTIRE OPENING ON ALL SIDES. THE MAXIMUM GAP BETWEEN HOST STRUCTURE AND FABRIC SHALL NOT EXCEED 1/4" OR ADDITIONAL CLOSURE ANGLES SHALL BE INSTALLED.

FL 8637.1

ENGINEERING EXPRESS
POSTAL ADDRESS:
2234 NORTH FEDERAL HWY #7664
BOCA RATON, FL 33431
ENGINEERINGEXPRESS.COM

FENETEX
259 ELLIS RD
JACKSONVILLE, FL 32254
(904) 437-5168
FENETEX HURRICANE SCREENS
IMPACT RESISTANT ABATEMENT SYSTEM
FLORIDA BUILDING CODE

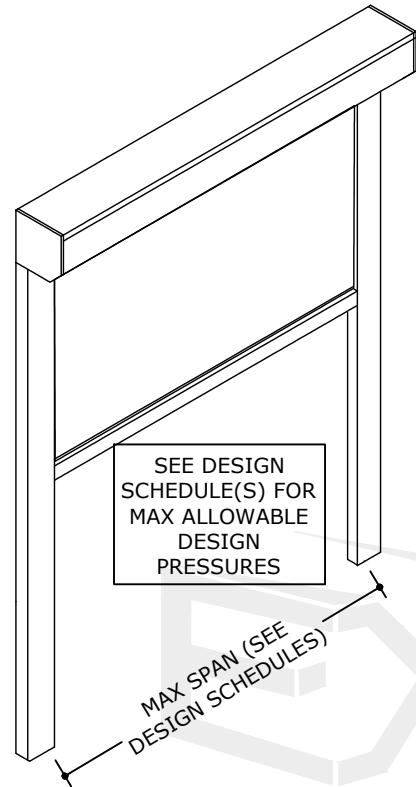
REMARKS	DATE	DRWN	CHKD
INIT ISSUE	2-8-2021	RWN	RWN
2023 FBC	12-26-2023	RWN	RWN

COPYRIGHT ENGINEERING EXPRESS®

21-36692

SCALE: NTS UNLESS NOTED

1 OF 13



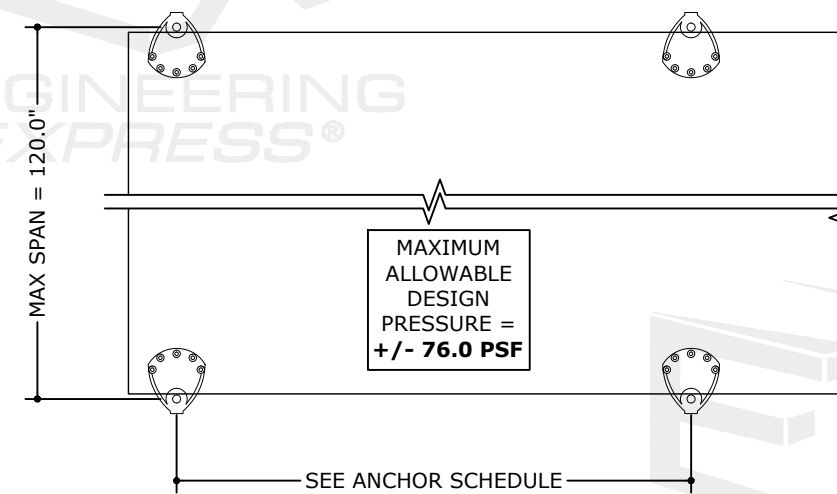
RETRACTABLE SCREEN

AUTOMATICALLY DEPLOYED HURRICANE
PROTECTIVE SCREENS

FABRIC TYPES:
1. POLYMESH
2. PVC LAMINATE
3. PVC MESH
** SEE EVALUATION REPORT
FOR SCREEN SPECIFICATIONS

SEE DESIGN
SCHEDULE(S) FOR
MAX ALLOWABLE
DESIGN
PRESSURES

MAX SPAN (SEE
DESIGN SCHEDULES)



REMOVABLE SCREEN

MANUALLY DEPLOYED HURRICANE
PROTECTIVE SCREENS

MAXIMUM
ALLOWABLE
DESIGN
PRESSURE =
+/- 76.0 PSF

MAX SPAN = 120.0"

SEE ANCHOR SCHEDULE

GLASS SEPARATION NOTE:

GLASS SEPARATION NOT REQUIRED OUTSIDE OF WIND ZONE 4 AND THE HVHZ UNLESS REQUIRED BY LOCAL JURISDICTION. 32" MINIMUM GLASS SEPARATION SHALL BE USED WITHIN THE HVHZ AND WIND ZONE 4. GLASS SEPARATION IS DEFINED AS THE DISTANCE FROM THE INSIDE FACE OF THE FABRIC TO THE OUTSIDE SURFACE OF EXISTING GLAZING WHILE SCREEN IS DEPLOYED.

NOTE REGARDING USE OF THIS DOCUMENT & USE OUTSIDE FLORIDA:

NON-SITE-SPECIFIC STRUCTURAL PERFORMANCE EVALUATION. THIS PRODUCT EVALUATION IS VALID FOR USE IN **FLORIDA ONLY**. USE OF THIS EVALUATION REQUIRES A REVIEW & CERTIFICATION BY A LOCAL DESIGN PROFESSIONAL WHO SHALL BE RESPONSIBLE FOR THE PROPER ADAPTATION OF THIS GENERAL PERFORMANCE EVALUATION TO ANY SITE-SPECIFIC PROJECT. CONTACT THIS OFFICE AT ENGINEERINGEXPRESS.COM/QUOTE FOR ASSISTANCE WITH YOUR PROJECT-SPECIFIC NEEDS & FOR ADAPTATION & CERTIFICATION OF THIS DOCUMENT OUTSIDE OF FLORIDA.

VISIT ECALC.IO/36692

FOR SITE SPECIFIC DEVIATIONS
& MORE INFORMATION ABOUT THIS DOCUMENT
OR SCAN THIS QR CODE

VISIT ENGINEERINGEXPRESS.COM/STORE
FOR ADDITIONAL PLANS, REPORTS & RESOURCES



TERMINOLOGY:

THE FOLLOWING ABBREVIATIONS APPEAR IN THIS APPROVAL: "INC." FOR "INCORPORATION", "CORP." FOR "CORPORATION", "ALUM" FOR "ALUMINUM", "ASD" FOR "ALLOWABLE STRESS DESIGN", "ASTM" FOR "AMERICAN SOCIETY FOR TESTING AND MATERIALS", "CS" FOR "CARBON STEEL", "CONN" FOR "CONNECTION", "EMBED" FOR "EMBEDMENT", "DIST." FOR "DISTANCE", "GA" FOR "GAUGE", "HVHZ" FOR "HIGH-VELOCITY HURRICANE ZONE", "LB" FOR "POUND", "MAX" FOR "MAXIMUM", "N.T.S." FOR "NOT TO SCALE", "PSF" FOR "POUNDS PER SQUARE FOOT (lb/ft²)", "SPECS" FOR "SPECIFICATIONS", "&" FOR "AND", "MAX" FOR "MAXIMUM", "W/" FOR "WITH", "EXIST" FOR "EXISTING", "STRUCT" FOR "STRUCTURE", "CONC." FOR "CONCRETE". CONTACT ENGINEERING EXPRESS FOR ADDITIONAL ABBREVIATION/TERMINOLOGY CLARIFICATIONS.

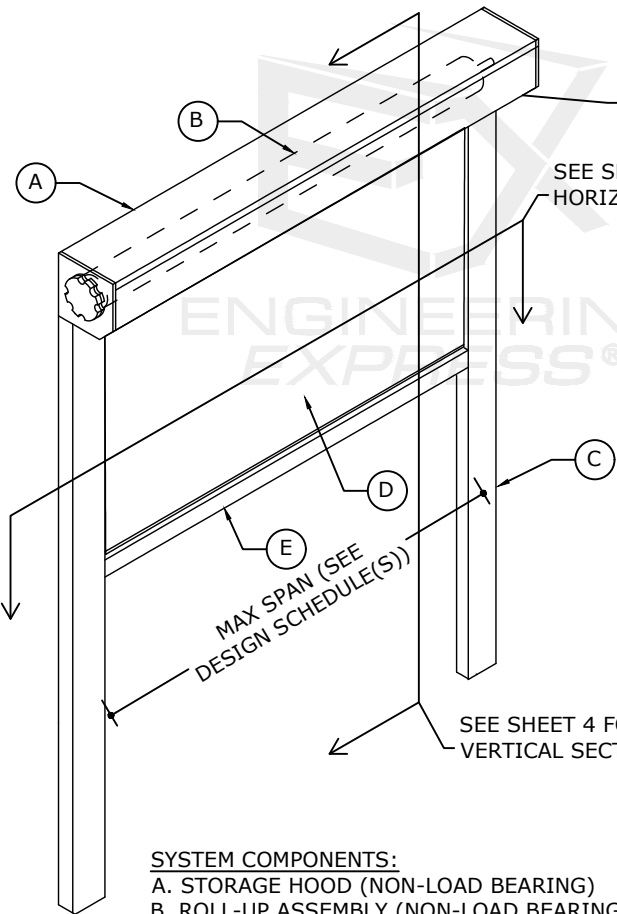
RETRACTABLE SCREEN

RICHARD NEET, P.E.
PE# 86488 CA# 9885



SPACE RESERVED FOR
CERTIFYING ENGINEER'S
DIGITAL OR PHYSICAL SEAL
& DATE OF CERTIFICATION

JANUARY 4, 2024



NOTE: HOOD ASSEMBLY HAS BEEN TESTED FOR LARGE MISSILE IMPACT AND MAY BE INSTALLED WITHIN THE OPENING

SEE SHEET 3 FOR HORIZ. SECTION VIEWS

SCREEN SYSTEM FABRICATION NOTES:

- HURRICANE SCREEN AND KEDER COMPONENTS SHALL BE CONSISTENT WITH TESTED MATERIALS AND SPECIFICATIONS PER THE EVALUATION REPORT.
- 6MM DOUBLE FLAP KEDER WELDED TO HURRICANE SCREEN ON TRACK SIDES AND WEIGHT BAR SIDE WITH MINIMUM 20MM WIDE WELD.
- 4MM DOUBLE FLAP KEDER WELDED TO SCREEN TOP WITH MINIMUM 10MM WIDE WELD.
- SCREENS MAY HAVE A MINIMUM 20MM OVERLAP WELDED HORIZONTAL SEAMS WHERE REQUIRED TO EXTEND THE NON-SPAN DIMENSION OF A SCREEN AS REQUIRED FOR THE OPENING.
- THE ROLL UP MECHANISM, HOOD COVERS, AND COMPONENTS ARE NOT PART OF THIS APPROVAL. SIZES AND TYPE ARE SELECTED BASED ON MANUFACTURER'S SPECIFICATIONS FOR VARYING SCREEN DIMENSIONS.

SEE SHEET 4 FOR VERTICAL SECTION VIEWS

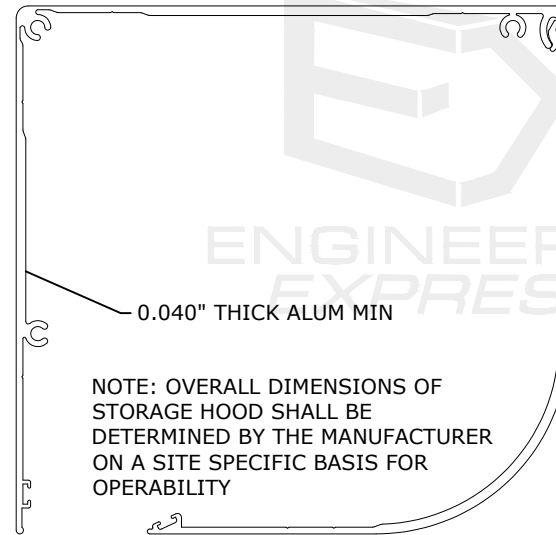
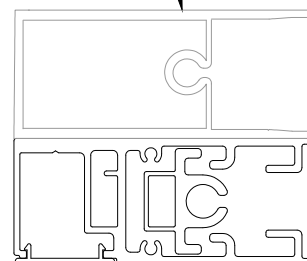
SYSTEM COMPONENTS:

- A. STORAGE HOOD (NON-LOAD BEARING)
- B. ROLL-UP ASSEMBLY (NON-LOAD BEARING)
- C. EDGE RETENTION TRACK (SEE OPTIONS 1-3)
- D. SCREEN
- E. BOTTOM TRACK
- F. 1/4-14X1" ITW/BUILDDEX HWH TEK SELECT (OR EQUIV.)
- G. SCREEN TRACK (SEE TRACK OPTIONS)
- H. SNAP COVER (SEE TRACK OPTIONS)

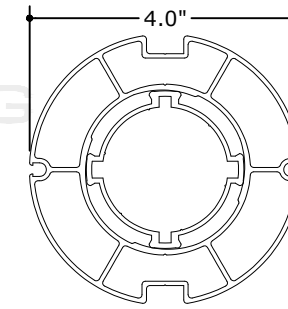
RETRACTABLE SCREEN (N.T.S.)

ISOMETRIC

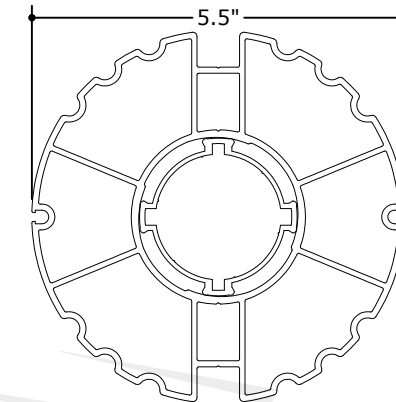
SECONDARY NON-HURRICANE SCREEN TRACK MAY BE ATTACHED TO PRIMARY HURRICANE SCREEN TRACK. SECONDARY SCREEN TRACK ANCHORS ARE NOT INCLUDED IN ANCHOR CALCULATIONS



A STORAGE HOOD
3105-H14 ALUM
MIN

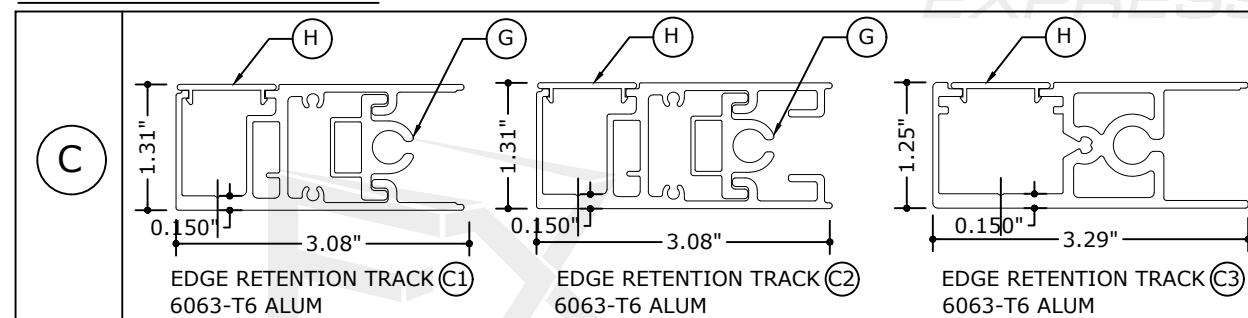


B ROLL-UP ASSEMBLY
6005A-T6 ALUM



NOTE: ROLL-UP ASSEMBLY SIZE SHALL BE DETERMINED BY THE MANUFACTURER ON A SITE SPECIFIC BASIS FOR OPERABILITY

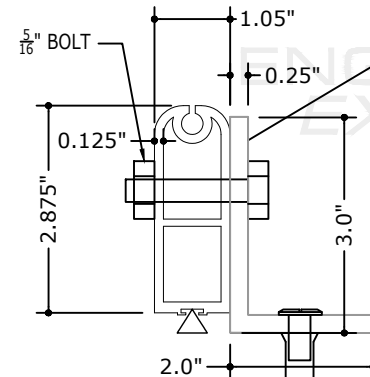
TRACK OPTIONS (PATENT PENDING)



C1 EDGE RETENTION TRACK
6063-T6 ALUM

C2 EDGE RETENTION TRACK
6063-T6 ALUM

C3 EDGE RETENTION TRACK
6063-T6 ALUM

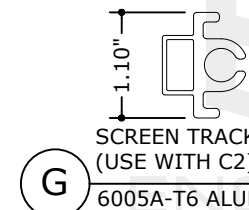


E BOTTOM TRACK
6005A-T6 ALUM

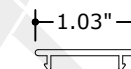
FOR SHUTTERS WITH SPANS GREATER THAN 192", HOLD DOWN BRACKETS SHALL BE PROVIDED PER THE BELOW DIRECTIVE:

- **OPTION 1:** PROVIDE (2) 12" LONG BRACKETS AT 36" FROM BOTTOM BAR ENDS. PROVIDE (3) DEWALT PANELMATES TO CONC. AND (1) BOLT TO BOTTOM TRACK.
- **OPTION 2:** PROVIDE (1) 20" LONG BRACKET AT CENTER. PROVIDE (5) DEWALT PANELMATES TO CONC. AND (3) BOLTS TO BOTTOM TRACK.

DEWALT PANELMATE INSERT W/ 1 5/8" EMBED, 4" MIN SPACING & 3" MIN EDGE DIST. (TO 2.5 KSI MIN CONC.). PROVIDE 1/4-20 SCREW W/ WASHER, TYP.



G SCREEN TRACK (USE WITH C2)
6005A-T6 ALUM



H SNAP COVER (USE WITH C2 & C3)
6005A-T6 ALUM

FL 8637.1

ENGINEERING EXPRESS
POSTAL ADDRESS:
2234 NORTH FEDERAL HWY #7664
BOCA RATON, FL 33431
ENGINEERINGEXPRESS.COM

FENETEX
259 ELLIS RD
JACKSONVILLE, FL 32254
(904) 437-5168
FENETEX HURRICANE SCREENS
IMPACT RESISTANT ABATEMENT SYSTEM
FLORIDA BUILDING CODE

REMARKS	DATE	DRWN	CHKD
INIT ISSUE	2-8-2021	RWN	RWN
2023 FBC	12-26-2023	RWN	RWN

21-36692

SCALE: NTS UNLESS NOTED

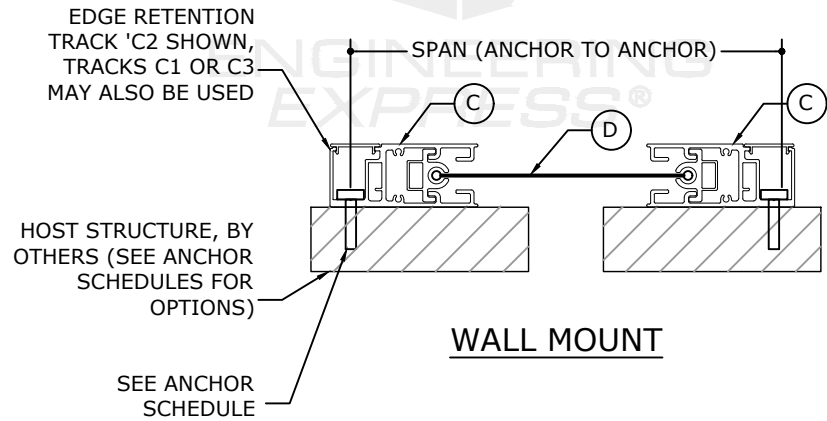
RETRACTABLE SCREEN

RICHARD NEET, P.E.
PE# 86488 CA# 9885

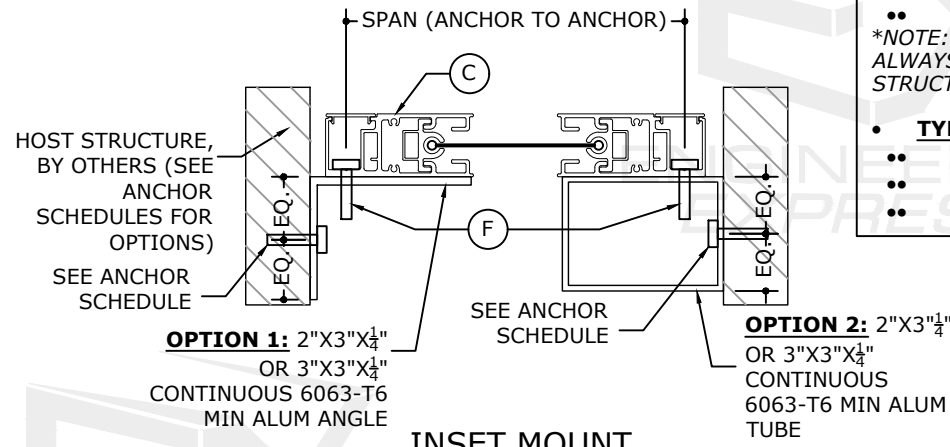


SPACE RESERVED FOR
CERTIFYING ENGINEER'S
DIGITAL OR PHYSICAL SEAL
& DATE OF CERTIFICATION

JANUARY 4, 2024



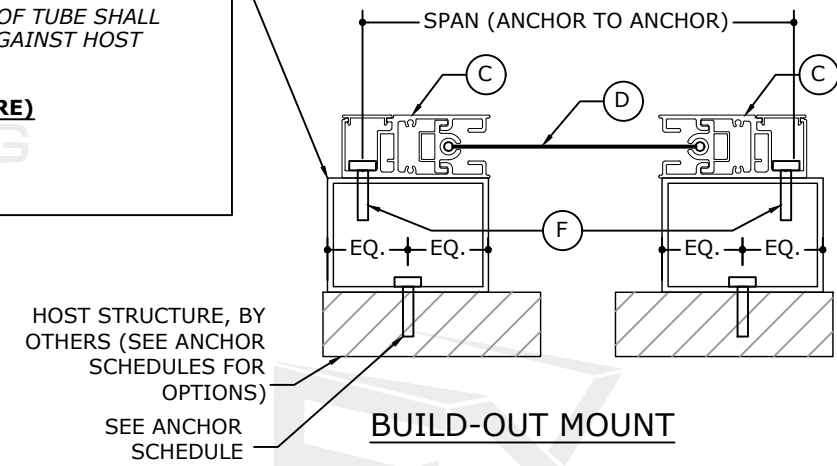
WALL MOUNT



INSET MOUNT

**ALUM. BUILDOUT TUBE OPTIONS
(6063-T6 MIN)**

- TYPE 1: (RECTANGULAR)**
 - 2"X3"X $\frac{1}{4}$ " OR
 - 2"X4"X $\frac{1}{4}$ "
 - TYPE 2: (SQUARE)**
 - 3"X3"X $\frac{1}{4}$ " OR
 - 4"X4"X $\frac{1}{4}$ " OR
 - 6"X6"X $\frac{1}{4}$ "
- *NOTE: LARGE SIDE OF TUBE SHALL ALWAYS BE FLUSH AGAINST HOST STRUCTURE*

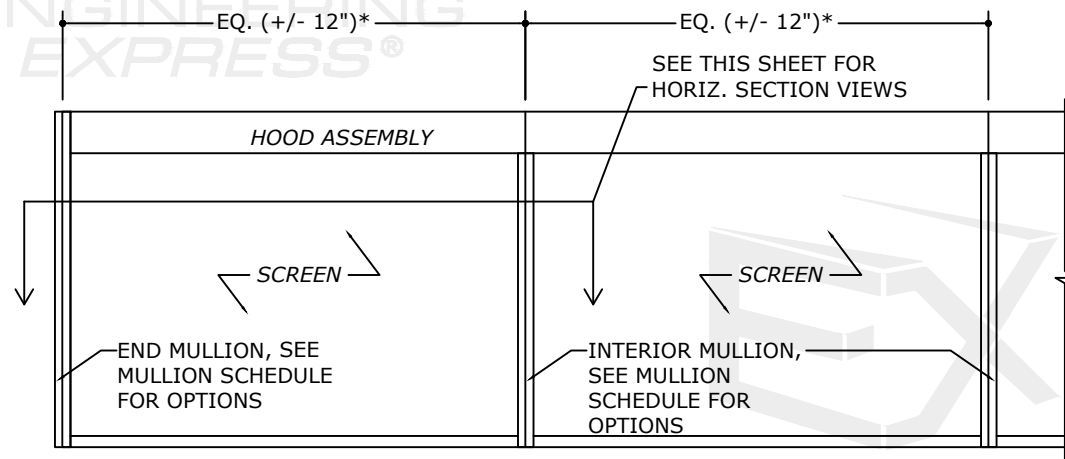


BUILD-OUT MOUNT

TRACK-TO-HOST CONNECTIONS (N.T.S.)

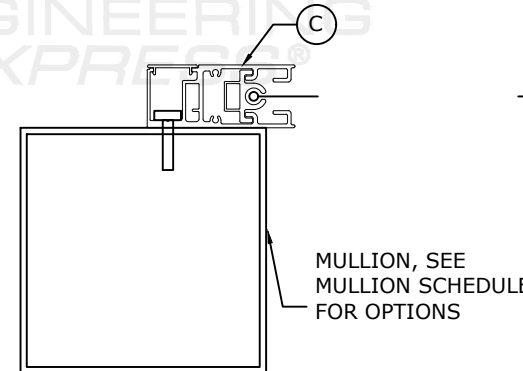
HORIZ. SECTIONS

**NOTE: TO CLASSIFY AS AN "INTERIOR MULLION", THE ADJACENT SPANS ON EITHER SIDE MUST NOT VARY BY MORE THAN 12". IF ADJACENT SPANS VARY MORE THAN 12", USE SCHEDULES FOR "END MULLION"*

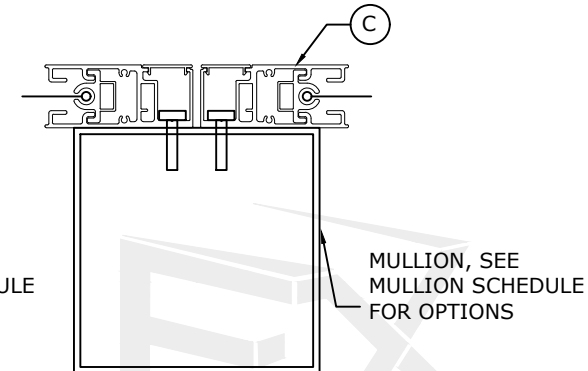


MULLION LAYOUT (N.T.S.)

ELEVATION



END MULLION



INTERIOR MULLION

MULLION CONNECTIONS (N.T.S.)

HORIZ. SECTIONS

FL 8637.1

ENGINEERING EXPRESS
POSTAL ADDRESS:
2234 NORTH FEDERAL HWY #7664
BOCA RATON, FL 33431
ENGINEERINGEXPRESS.COM

FENETEX
259 ELLIS RD
JACKSONVILLE, FL 32254
(904) 437-5168
FENETEX HURRICANE SCREENS
IMPACT RESISTANT ABATEMENT SYSTEM
FLORIDA BUILDING CODE

REMARKS	DRWN	CHKD	DATE
INIT ISSUE	RWN	RWN	2-8-2021
2023 FBC	RWN	RWN	12-26-2023

21-36692

SCALE: NTS UNLESS NOTED

c:\users\rickn\onedrive - engineering express\21-121-36692 fenetex hurricane system\wp\2023 fsa\21-36692g fl8637.1.dwg.r14/2024 10:37 AM RICKN

RETRACTABLE SCREEN

RICHARD NEET, P.E.
PE# 86488 CA# 9885



SPACE RESERVED FOR
CERTIFYING ENGINEER'S
DIGITAL OR PHYSICAL SEAL
& DATE OF CERTIFICATION

JANUARY 4, 2024

HOUSING NOTES:

1. HOUSING (0.040" THICK ALUM MIN, 3105-H14 MIN)
2. END CAP (CAST ALUM, SHALL BE CAPABLE OF SUPPORTING SLAT AND LIFT MECHANISM WEIGHT)
3. 3/16" ALUM POP RIVETS (6 TOTAL PER SIDE CAP, 2 AT TO, 2 AT REAR, 2 AT BOTTOM)
4. HOOD HAS BEEN TESTED FOR IMPACT / CYCLING AND MAY BE INSTALLED WITHIN OPENING

FL 8637.1

ENGINEERING EXPRESS

POSTAL ADDRESS:
2234 NORTH FEDERAL HWY #7664
BOCA RATON, FL 33431
ENGINEERINGEXPRESS.COM

FENETEX

259 ELLIS RD
JACKSONVILLE, FL 32254
(904) 437-5168

FENETEX HURRICANE SCREENS
IMPACT RESISTANT ABATEMENT SYSTEM
FLORIDA BUILDING CODE

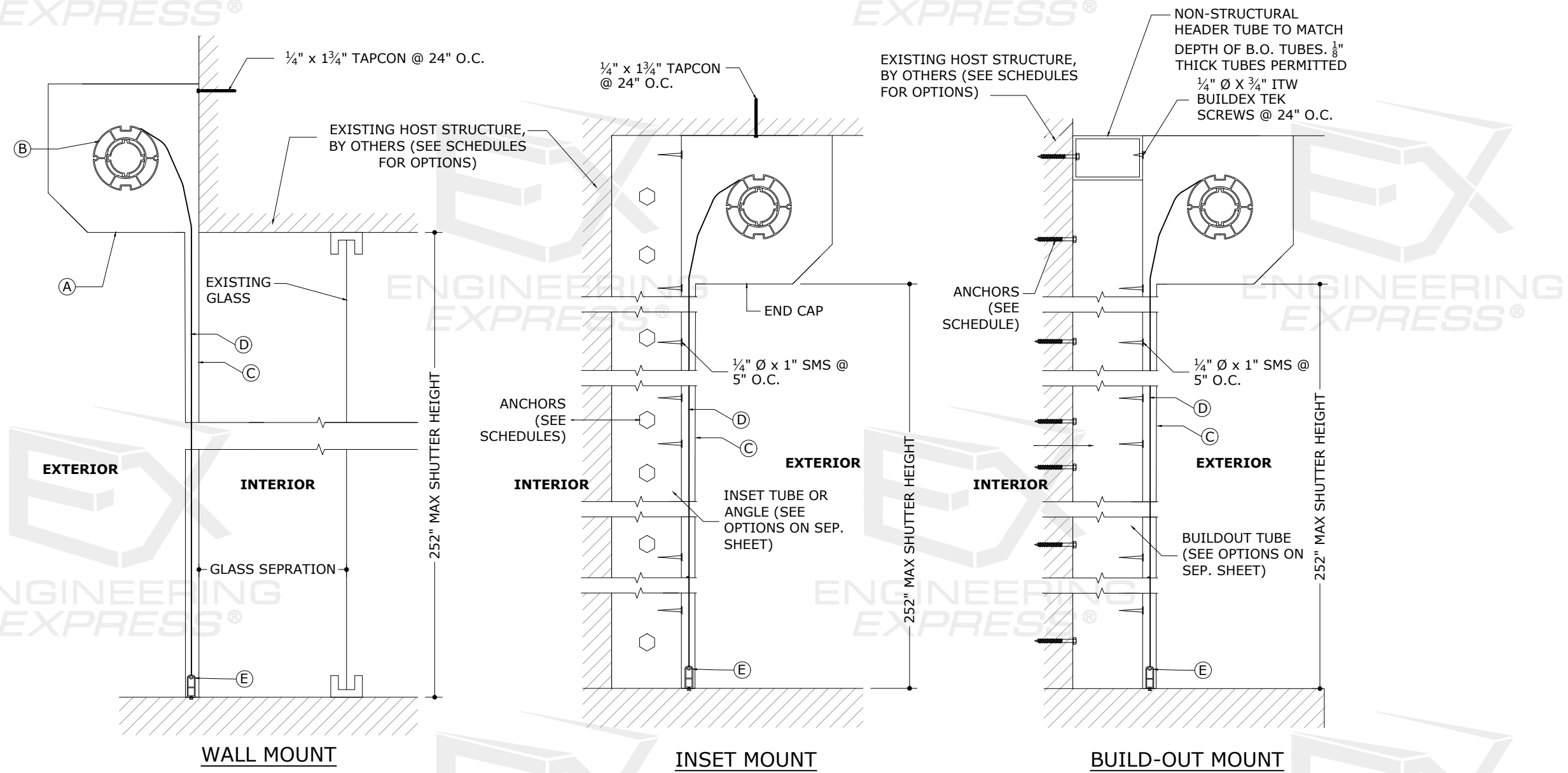
REMARKS	DRWN	CHKD	DATE
INIT ISSUE	RWN	RWN	2-8-2021
2023 FBC	RWN	RWN	12-26-2023

COPYRIGHT ENGINEERING EXPRESS®

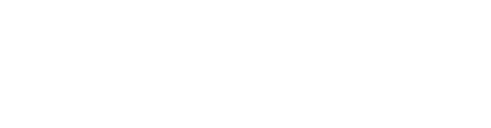
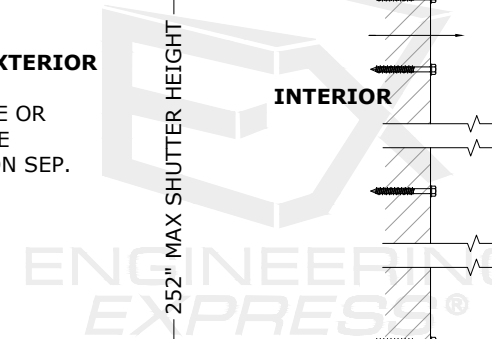
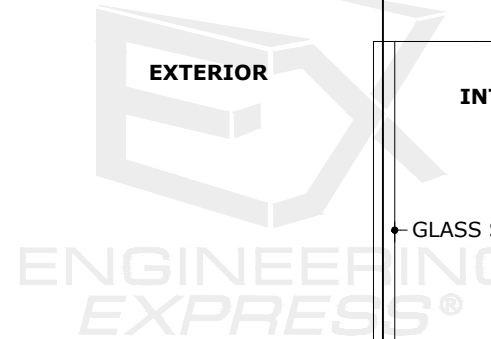
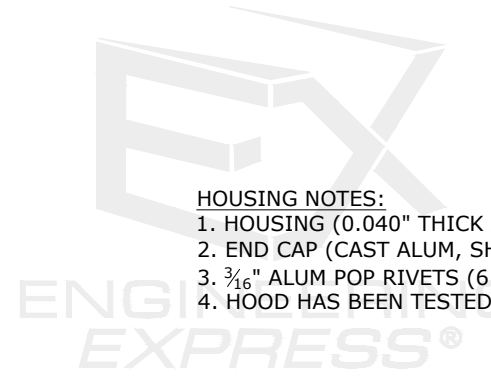
21-36692

SCALE: NTS UNLESS NOTED

4 OF 13



c:\users\rickn\onedrive - engineering express\21-121-36692 f18637 - fenetex hurricane system\wp\2023 fsa\21-36692g f18637.1.dwg



RETRACTABLE SCREEN

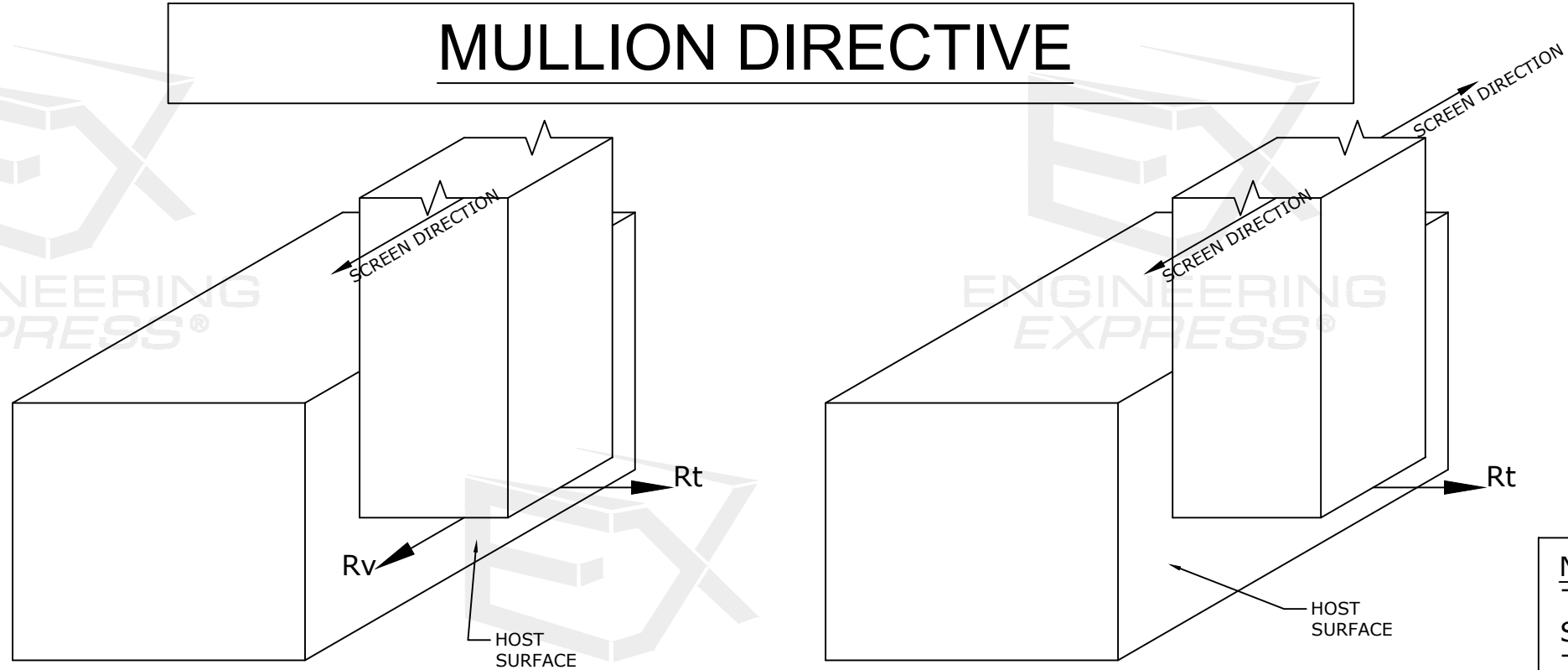
MULLION DIRECTIVE

RICHARD NEET, P.E.
PE# 86488 CA# 9885



SPACE RESERVED FOR
CERTIFYING ENGINEER'S
DIGITAL OR PHYSICAL SEAL
& DATE OF CERTIFICATION

JANUARY 4, 2024



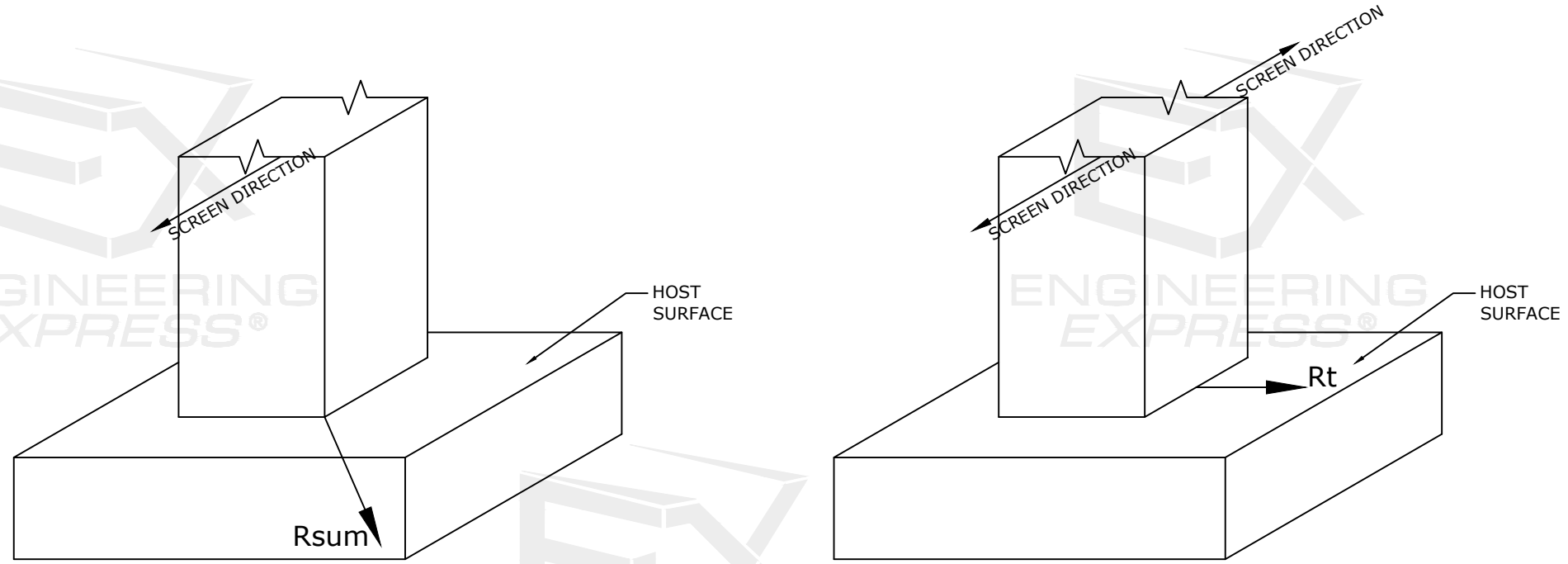
END MULLION "FACE MOUNT" DIAGRAM

N.T.S. ISOMETRIC

INTERIOR MULLION "FACE MOUNT" DIAGRAM

N.T.S. ISOMETRIC

NOTE:
THE DIAGRAMS ON THIS SHEET
SHALL BE USED TO DETERMINE
THE APPLICABLE MULLION
OPTION(S) IN THE MULLION
SCHEDULES AND MULLION
ATTACHMENT SCHEDULE



END MULLION "TRAPPED MOUNT" DIAGRAM

N.T.S. ISOMETRIC

INTERIOR MULLION "TRAPPED MOUNT" DIAGRAM

N.T.S. ISOMETRIC

FL 8637.1

ENGINEERING EXPRESS
POSTAL ADDRESS:
2234 NORTH FEDERAL HWY #7664
BOCA RATON, FL 33431
ENGINEERINGEXPRESS.COM

FENETEX

259 ELLIS RD
JACKSONVILLE, FL 32254
(904) 437-5168

FENETEX HURRICANE SCREENS
IMPACT RESISTANT ABATEMENT SYSTEM
FLORIDA BUILDING CODE

REMARKS	DRWN	CHKD	DATE
INIT. ISSUE	RWN	RWN	2-8-2021
2023 FBC	RWN	RWN	12-26-2023

COPYRIGHT ENGINEERING EXPRESS®

21-36692

SCALE: NTS UNLESS NOTED

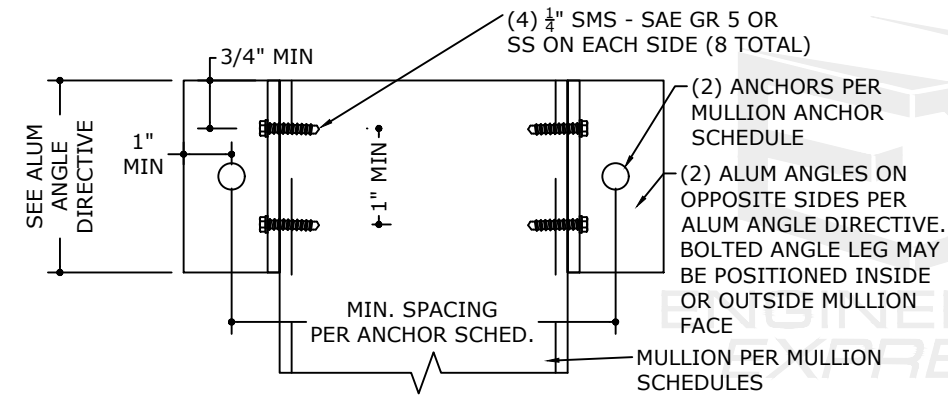
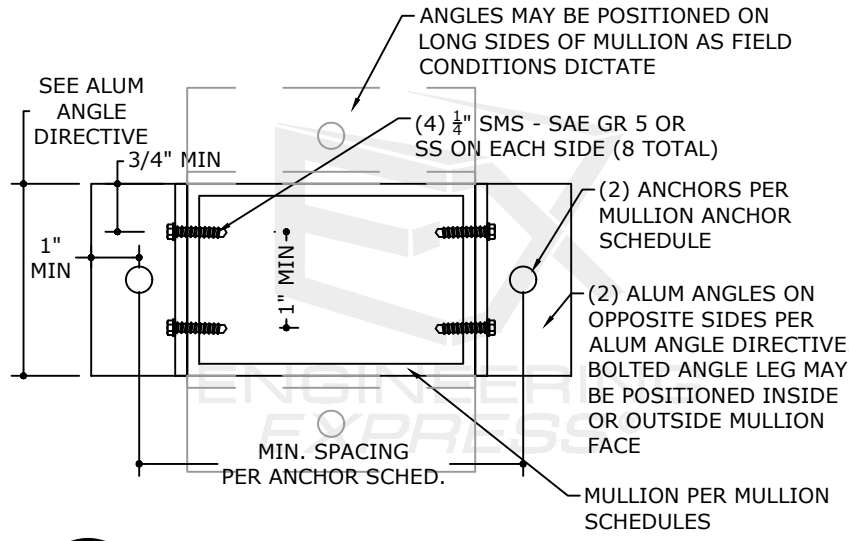
c:\users\vrickn\onedrive - engineering express\21-121-36692 fenetex hurricane system\wp\2023 fsa\21-36692g fl8637.1.dwg.dwg
1/4/2024 10:37 AM RICKN

RETRACTABLE SCREEN

RICHARD NEET, P.E.
PE# 86488 CA# 9885

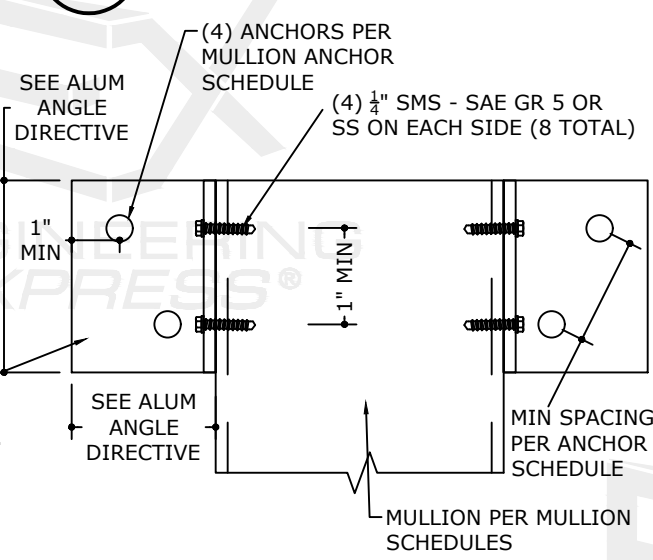
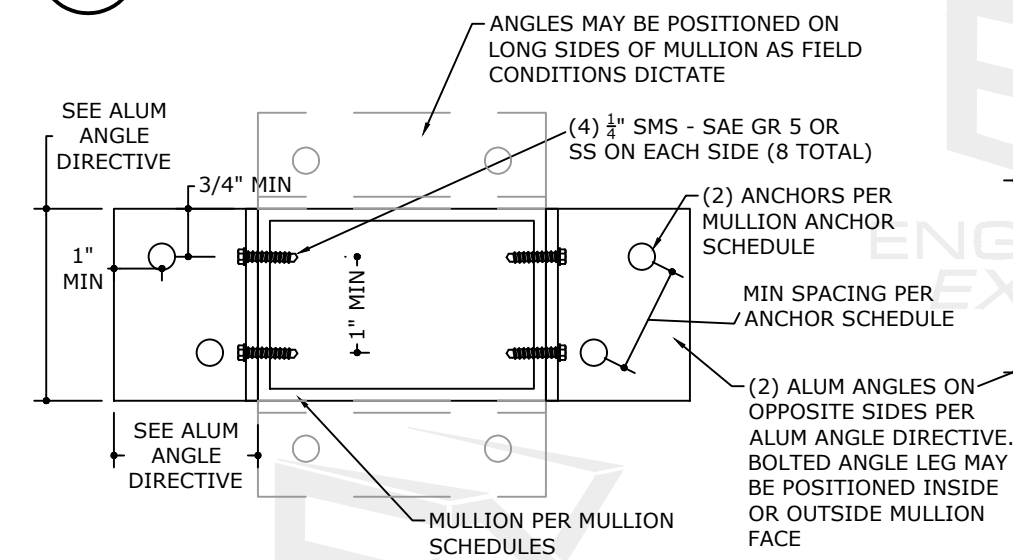


SPACE RESERVED FOR
CERTIFYING ENGINEER'S
DIGITAL OR PHYSICAL SEAL
& DATE OF CERTIFICATION
JANUARY 4, 2024



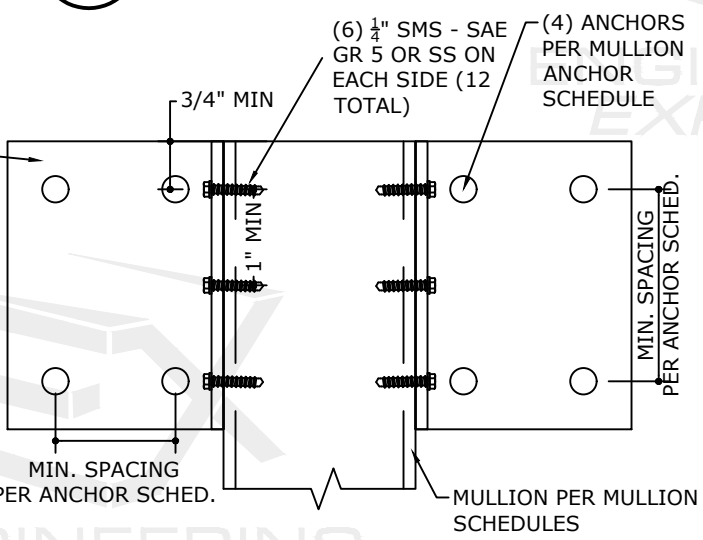
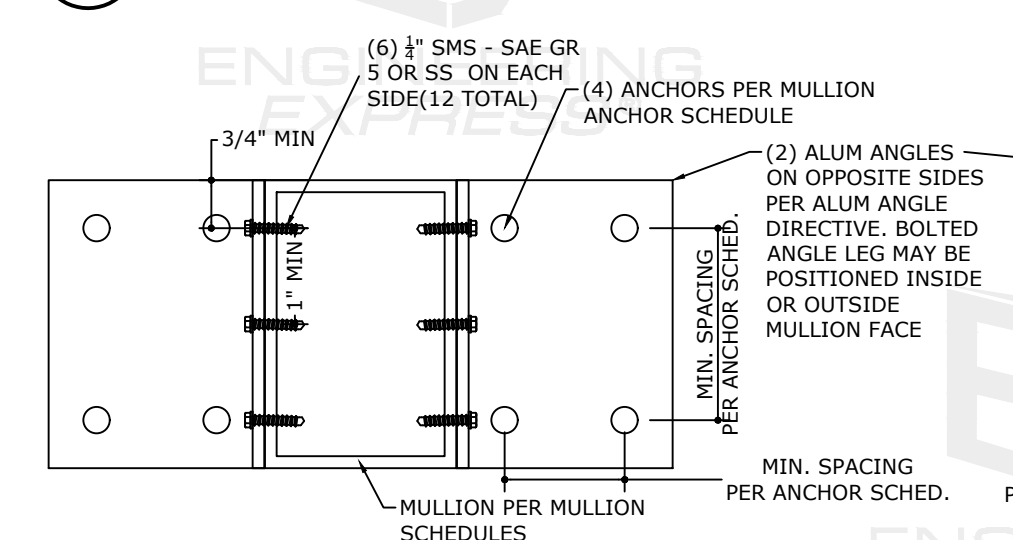
1A TRAPPED MOUNT OPTION 1
12 N.T.S.

1B FACE MOUNT OPTION 1
12 N.T.S.



2A TRAPPED MOUNT OPTION 2
12 N.T.S.

2B FACE MOUNT OPTION 2
12 N.T.S.



3A TRAPPED MOUNT OPTION 3
12 N.T.S.

3B FACE MOUNT OPTION 3
12 N.T.S.

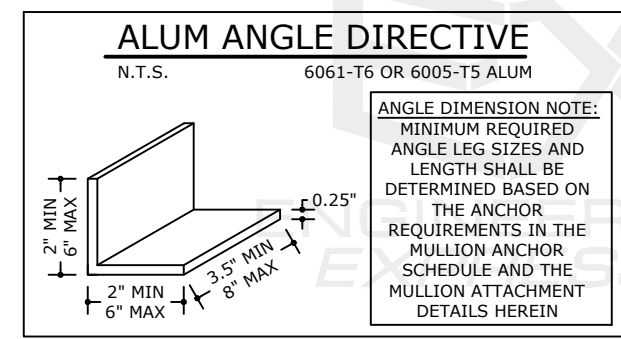
MULLION ANCHOR SCHEDULE

ANCHOR TYPE	MINIMUM SPACING	MINIMUM EDGE DISTANCE	CONNECTION DETAIL	CONNECTION CAPACITY	
				Tcap	Vcap
1/2" DEWALT SCREW BOLTS (OR EQUIV.) W/ 2-1/2" EMBED TO 3KSI MIN. CONCRETE	6"	4.5"	1A/12, 1B/12	3660 LB	2249 LB
	4.0"	4.5"	2A/12, 2B/12	6442 LB	4106 LB
			3A/12, 3B/12	12883 LB	8213 LB
3/8" DEWALT SCREW BOLTS (OR EQUIV.) W/ 2" EMBED TO 3KSI MIN. CONCRETE	6.0"	2.5"	1A/12, 1B/12	1905 LB	1007 LB
	3.0"	2.5"	2A/12, 2B/12	3801 LB	1700 LB
			3A/12, 3B/12	7622 LB	3399 LB
3/8" DEWALT SCREW BOLTS (OR EQUIV.) W/ 3-1/4" EMBED TO GROUT-FILLED CONCRETE BLOCK*	6.0"	4.5"	1A/12, 1B/12	1953 LB	1233 LB
	3.0"	4.5"	2A/12, 2B/12	3906 LB	2467 LB
			3A/12, 3B/12	7812 LB	4934 LB
5/16" LAG SCREW W/ 2" MIN. THREAD PENETRATION TO G=0.42 MIN WOOD	2.0"	1.25"	1A/12, 1B/12	1310 LB	302 LB
	2.0"	1.25"	2A/12, 2B/12	2620 LB	604 LB
			3A/12, 3B/12	3930 LB	906 LB
5/16" DEWALT ULTRACON (OR EQUIV.) W/ 2" EMBED TO 3.5KSI MIN CONCRETE	5.0"	3.125"	1A/12, 1B/12	1670 LB	1700 LB
	3.75"	3.125"	2A/12, 2B/12	1820 LB	2840 LB
			3A/12, 3B/12	3640 LB	5680 LB
5/16" DEWALT ULTRACON (OR EQUIV.) W/ 2-1/4" EMBED TO GROUT-FILLED CONCRETE BLOCK	5.0"	2.5"	1A/12, 1B/12	580 LB	750 LB
	5.0"	2.5"	2A/12, 2B/12	1160 LB	1500 LB
			3A/12, 3B/12	2320 LB	3000 LB

- MULLION ANCHOR SCHEDULE NOTES:**
- FOR "TRAPPED MOUNT" CONDITIONS WITH END MULLIONS, 'Rsum' VALUES IN MULLION SCHEDULE SHALL NOT EXCEED MAX 'Vcap' VALUES NOTED IN THIS SCHEDULE.
 - FOR "FACE MOUNT" CONDITIONS WITH END MULLIONS, **Rv/Vcap + Rt/Tcap SHALL BE LESS THAN OR EQUAL TO 1.0**, WHERE 'Rv' AND 'Rt' ARE PER MULLION SCHEDULES, AND 'Tcap' AND 'Vcap' ARE PER THIS SCHEDULE.
 - FOR "TRAPPED MOUNT" CONDITIONS WITH INTERMEDIATE MULLIONS, 'Rt' VALUES IN MULLION SCHEDULES SHALL NOT EXCEED 'Vcap' VALUES NOTED IN THIS SCHEDULE.
 - FOR "FACE MOUNT" CONDITIONS WITH INTERMEDIATE MULLIONS, 'Rt' VALUES IN MULLION SCHEDULES SHALL NOT EXCEED 'Tcap' VALUES NOTED IN THIS SCHEDULE.
 - * ANCHORS SHALL PENETRATE THROUGH FACE SHELL INTO GROUTED CELL.
 - ALTERNATE ANCHORS AND OR END CONNECTION CONFIGURATIONS MAY BE DESIGNED/CERTIFIED ON A SITE SPECIFIC BASIS BASED ON THE END LOADINGS LISTED IN THE MULLION SCHEDULES.
 - 1/2" UNC THRU BOLTS MAY BE USED IN LIEU OF 1/2" SMS PER THE FOLLOWING DIRECTIVE
 - (4) SMS PER SIDE = (2) 1/2" UNC THRU BOLTS / (6) SMS PER SIDE = (3) 1/2" UNC THRU BOLTS

ALTERNATE ANCHOR NOTE:

FOR ALL 1/4" AND 5/16" DIAMETER ANCHOR OPTIONS LISTED IN THE ANCHOR SCHEDULES, AN EQUIVALENT DIAMETER HILLMAN/ALL-POINTS SOLID-SET/POWER-PRO ANCHOR (CARBON OR STAINLESS STEEL) MAY BE USED IN LIEU OF THE OPTION(S) LISTED SO LONG AS THE LISTED MINIMUM EMBEDMENT, EDGE DISTANCE AND SPACING ARE ACHIEVED.



FL 8637.1

ENGINEERING EXPRESS
POSTAL ADDRESS:
2234 NORTH FEDERAL HWY #7664
BOCA RATON, FL 33431
ENGINEERINGEXPRESS.COM

FENETEX
259 ELLIS RD
JACKSONVILLE, FL 32254
(904) 437-5168
FENETEX HURRICANE SCREENS
IMPACT RESISTANT ABATEMENT SYSTEM
FLORIDA BUILDING CODE

REMARKS	DATE
INIT ISSUE	2-8-2021
2023 FBC	12-26-2023


COPYRIGHT ENGINEERING EXPRESS®

21-36692
SCALE: NTS UNLESS NOTED

c:\users\rickn\onedrive - engineering express\21-121-36692 f8637 - fenetex hurricane system.wp\2023 fsa\21-36692g f8637.1.dwg.dwg

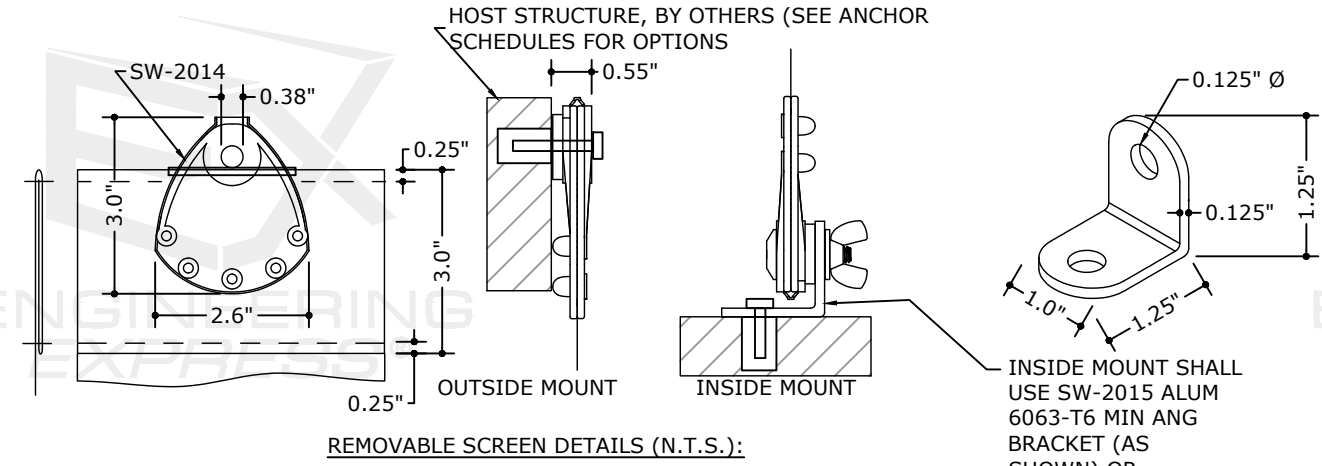
REMOVABLE SCREEN

RICHARD NEET, P.E.
PE# 86488 CA# 9885



SPACE RESERVED FOR
CERTIFYING ENGINEER'S
DIGITAL OR PHYSICAL SEAL
& DATE OF CERTIFICATION

JANUARY 4, 2024



REMOVABLE SCREEN DETAILS (N.T.S.):

DOUBLE FOLD EDGE 3" HEM WITH FABRIC #1 WITH STITCHING AT 5 STITCHES PER INCH AS INDICATED. NO REQUIRED HEM WITH FABRICS #2 OR #3. SCREW CLIP IS SECURED TO SCREEN WITH (5) #8X1/2" SCREWS. FIRST CLIP NOT MORE THAN 3" FROM PANEL EDGE.

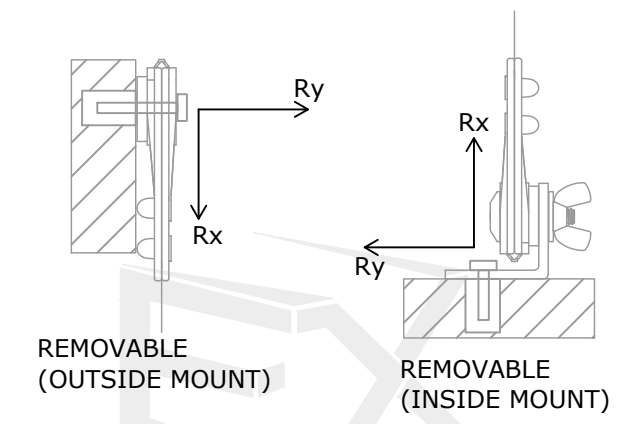
INSIDE MOUNT SHALL USE SW-2015 ALUM 6063-T6 MIN ANG BRACKET (AS SHOWN) OR CONTINUOUS ANGLE

REMOVABLE SCREEN DESIGN SCHEDULE (INSIDE & OUTSIDE MOUNT) UP TO +/- 76 PSF

SPAN	DESIGN PRESSURE	Rx	Ry	MAXIMUM SPACING (O.C.)											
				WOOD				CONCRETE				HOLLOW BLOCK			
				1/4" ELCO/DEWALT PANELMATE (FEMALE, MALE, or PLUS) W/ 1-7/8" EMBED AND 3/4" MIN EDGE DISTANCE (G=0.54 MIN)	1/4" ITW TAPCON STORM GUARD W/ 1-3/4" EMBED AND 1-1/4" MIN EDGE DISTANCE (G=0.42 MIN)	1/4-20 PANELMATE INSERT WITH 1-5/8" EMBED AND 3/4" MIN EDGE DISTANCE (G=0.42 MIN)	1/4" WOOD OR LAG SCREW WITH 1-3/8" MIN THREAD PEN. AND 3/4" MIN EDGE DISTANCE (G=0.42 MIN)	1/4" ELCO/DEWALT PANELMATE (FEMALE, MALE, or PLUS) W/ 2" EMBED AND 2-1/2" MIN EDGE DISTANCE (3350 psi MIN CONC)	5/16" RED HEAD DYNABOLT SLEEVE ANCHOR & 1/4-20 BOLT W/ 1-1/4" EMBED AND 1-7/8" MIN EDGE DISTANCE (3000 psi MIN CONC)	1/4-20 DEWALT CALK-IN ANCHOR W/ 7/8" EMBED AND 3-1/2" MIN EDGE DISTANCE (3000 psi MIN CONCRETE)	1/4" ALL-POINTS SOLID-SET TO 3000 PSI MIN. CONCRETE; 0.875" MIN. EMBEDMENT; 3" MIN. EDGE DISTANCE	TO HOLLOW BLOCK; 0.875" MIN. EMBEDMENT; 3" MIN. EDGE DISTANCE	1/4" ELCO PANELMATE (FEMALE, MALE, or PLUS) W/ 1-1/4" EMBED AND 2" MIN EDGE DISTANCE (2000 psi MIN CMU)	1/4-20 DEWALT CALK-IN W/ 7/8" EMBED AND 2-1/2" MIN EDGE DISTANCE (1500 psi MIN CMU w/GROUT FILL)	1/4 DEWALT ZAMAC NAILIN W/ 1-1/4" EMBED AND 3" MIN EDGE DISTANCE (1500 psi MIN CMU)
60"	+/- 76 PSF	192 LB/FT	190 LB/FT	12.0"	6.3"	7.8"	6.4"	12.0"	12.0"	10.7"	12.0"	9.9"	6.7"	6.5"	6.2"
72"	+/- 76 PSF	231 LB/FT	228 LB/FT	10.5"	5.2"	6.5"	5.3"	12.0"	12.0"	9.0"	12.0"	8.3"	5.6"	5.4"	5.2"
84"	+/- 76 PSF	269 LB/FT	266 LB/FT	9.0"	4.5"	5.5"	4.6"	10.7"	11.5"	7.7"	12.0"	7.1"	4.8"	4.6"	4.4"
96"	+/- 76 PSF	308 LB/FT	304 LB/FT	7.8"	3.9"	4.9"	4.0"	9.4"	10.1"	6.7"	10.9"	6.2"	4.2"	4.0"	3.9"
108"	+/- 76 PSF	346 LB/FT	342 LB/FT	7.0"	3.5"	4.3"	3.2"	8.3"	9.0"	6.0"	9.7"	5.5"	3.6"	3.4"	3.4"
120"	+/- 76 PSF	385 LB/FT	380 LB/FT	6.3"	3.1"	3.9"	2.8"	7.5"	8.1"	5.4"	8.7"	5.0"	3.1"	3.0"	3.1"

REMOVABLE SCREEN DESIGN SCHEDULE (INSIDE & OUTSIDE MOUNT) UP TO +/- 45 PSF

SPAN	DESIGN PRESSURE	Rx	Ry	MAXIMUM SPACING (O.C.)											
				WOOD				CONCRETE				HOLLOW BLOCK			
				1/4" ELCO/DEWALT PANELMATE (FEMALE, MALE, or PLUS) W/ 1-7/8" EMBED AND 3/4" MIN EDGE DISTANCE (G=0.54 MIN)	1/4" ITW TAPCON STORM GUARD W/ 1-3/4" EMBED AND 1-1/4" MIN EDGE DISTANCE (G=0.42 MIN)	1/4-20 PANELMATE INSERT WITH 1-5/8" EMBED AND 3/4" MIN EDGE DISTANCE (G=0.42 MIN)	1/4" WOOD OR LAG SCREW WITH 1-3/8" MIN THREAD PEN. AND 3/4" MIN EDGE DISTANCE (G=0.42 MIN)	1/4" ELCO/DEWALT PANELMATE (FEMALE, MALE, or PLUS) W/ 2" EMBED AND 2-1/2" MIN EDGE DISTANCE (3350 psi MIN CONC)	5/16" RED HEAD DYNABOLT SLEEVE ANCHOR & 1/4-20 BOLT W/ 1-1/4" EMBED AND 1-7/8" MIN EDGE DISTANCE (3000 psi MIN CONC)	1/4-20 DEWALT CALK-IN ANCHOR W/ 7/8" EMBED AND 3-1/2" MIN EDGE DISTANCE (3000 psi MIN CONCRETE)	1/4" ALL-POINTS SOLID-SET TO 3000 PSI MIN. CONCRETE; 0.875" MIN. EMBEDMENT; 3" MIN. EDGE DISTANCE	TO HOLLOW BLOCK; 0.875" MIN. EMBEDMENT; 3" MIN. EDGE DISTANCE	1/4" ELCO PANELMATE (FEMALE, MALE, or PLUS) W/ 1-1/4" EMBED AND 2" MIN EDGE DISTANCE (2000 psi MIN CMU)	1/4-20 DEWALT CALK-IN W/ 7/8" EMBED AND 2-1/2" MIN EDGE DISTANCE (1500 psi MIN CMU w/GROUT FILL)	1/4 DEWALT ZAMAC NAILIN W/ 1-1/4" EMBED AND 3" MIN EDGE DISTANCE (1500 psi MIN CMU)
60"	+/- 45 PSF	100 LB/FT	113 LB/FT	12.0"	11.5"	12.0"	11.7"	12.0"	12.0"	12.0"	12.0"	12.0"	12.0"	11.5"	11.2"
72"	+/- 45 PSF	137 LB/FT	135 LB/FT	12.0"	8.8"	10.9"	9.0"	12.0"	12.0"	12.0"	12.0"	12.0"	9.5"	9.1"	8.7"
84"	+/- 45 PSF	159 LB/FT	158 LB/FT	12.0"	7.5"	9.4"	7.7"	12.0"	12.0"	12.0"	12.0"	12.0"	8.1"	7.8"	7.5"
96"	+/- 45 PSF	182 LB/FT	180 LB/FT	12.0"	6.6"	8.2"	6.7"	12.0"	12.0"	11.3"	12.0"	10.5"	7.1"	6.8"	6.5"
108"	+/- 45 PSF	205 LB/FT	203 LB/FT	11.8"	5.9"	7.3"	6.0"	12.0"	12.0"	10.1"	12.0"	9.3"	6.3"	6.1"	5.8"
120"	+/- 45 PSF	228 LB/FT	225 LB/FT	10.6"	5.3"	6.6"	5.4"	12.0"	12.0"	9.1"	12.0"	8.4"	5.7"	5.5"	5.2"



FL 8637.1

ENGINEERING EXPRESS
 POSTAL ADDRESS:
 2234 NORTH FEDERAL HWY #7664
 BOCA RATON, FL 33431
 ENGINEERINGEXPRESS.COM

FENETEX
 259 ELLIS RD
 JACKSONVILLE, FL 32254
 (904) 437-5168
 FENETEX HURRICANE SCREENS
 IMPACT RESISTANT ABATEMENT SYSTEM
 FLORIDA BUILDING CODE

REMARKS	DATE	DRWN	CHKD
INIT ISSUE	2-8-2021	RWN	RWN
2023 FBC	12-26-2023	RWN	RWN

21-36692

SCALE: NTS UNLESS NOTED

13 OF 13

c:\users\trick\onedrive - engineering express\21-121-36692 f8637 - fenetex hurricane system.wp\2023 fsa\21-36692g f8637.1.dwg.dwg