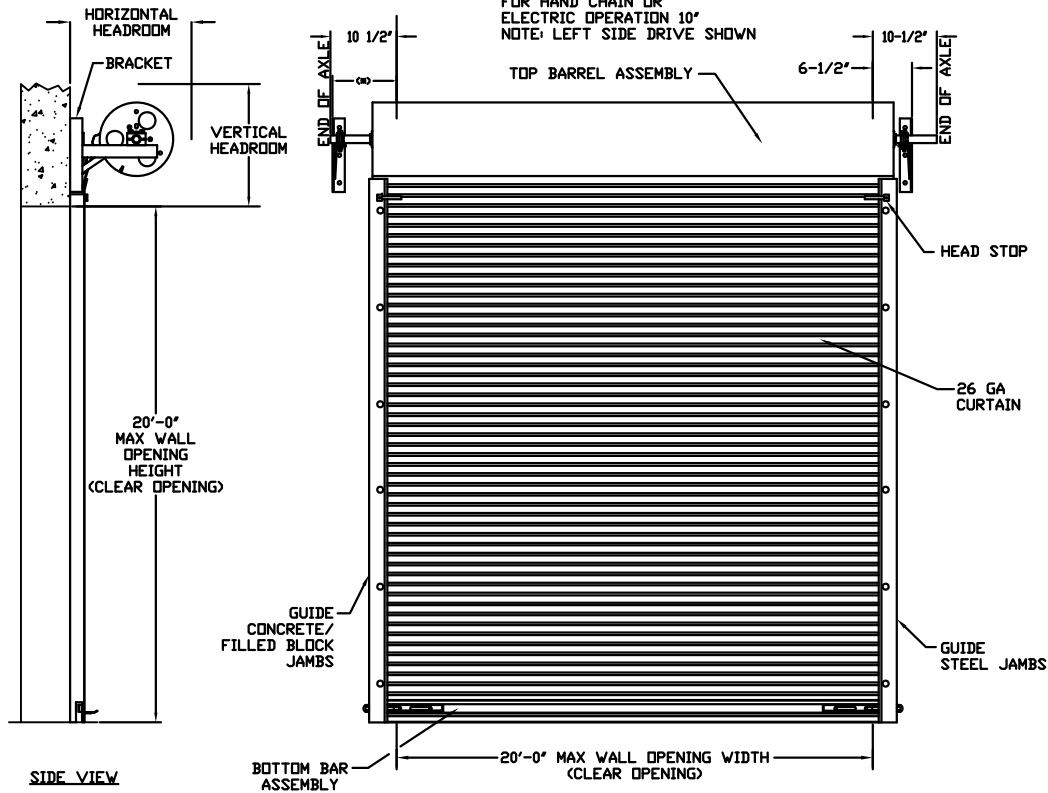


MINIMUM HEADROOM DIMENSIONS

OPENING HEIGHT	THRU 8'-0"	OVER 8'-0" THRU 10'-0"	OVER 10'-0" THRU 14'-0"	OVER 14'-0" THRU 16'-0"	OVER 16'-0" THRU 18'-0"	OVER 18'-0" THRU 20'-0"
VERTICAL HEADROOM	18'	20'	21'	22'	23'	24'
HORIZONTAL HEADROOM	19'	21'	22'	23'	24'	25'

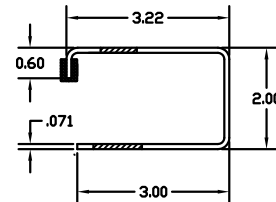
(*) FOR PUSH-UP OPERATION 6-1/2" FOR HAND CHAIN OR ELECTRIC OPERATION 10" NOTE: LEFT SIDE DRIVE SHOWN

TOP BARREL ASSEMBLY

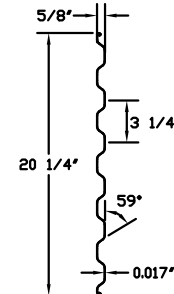


SIDE VIEW

INSIDE ELEVATION



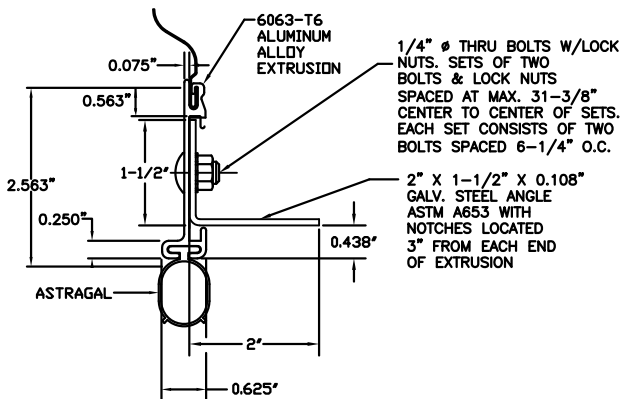
ASTM A653 G40 GALVANIZED CS TYPE B GUIDE DETAIL



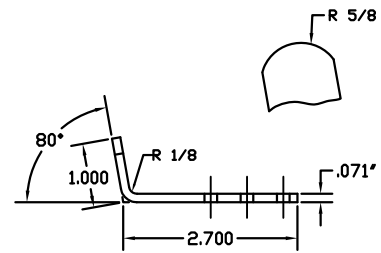
ASTM A653 SS GRADE 80 WITH FULL COAT OF PRIMER AND BAKED POLYESTER FINISH COAT

TYPICAL PANEL (26 GA) DETAIL

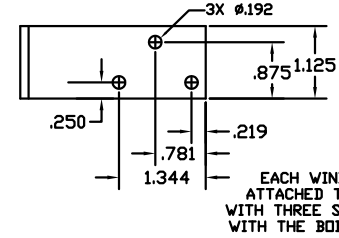
ASTM A653 G40 GALVANIZED CS TYPE B WINDBAR DETAIL



BOTTOM BAR ASSEMBLY DETAIL



WINDLOCK DETAIL



JOHN E. SCATES PE
3121 FAIRGATE
CARROLLTON, TX 75007

FL PE 51737
TX PE 56308/F-2203

THESE CONFIDENTIAL DOCUMENTS SUBMITTED BY DBCI CONTAIN INFORMATION OF A PROPRIETARY NATURE AND MAY NOT BE REPRODUCED OR USED TO MANUFACTURE ANYTHING IN PART OR IN WHOLE FOR ANY PURPOSE OTHER THAN THAT WHICH IS NECESSARY FOR PREPARATION OF BIDS OR ENGINEERING WITHOUT THE EXPRESS PERMISSION OF DBCI WHICH MAY RECALL DOCUMENTS AT ANY TIME.

Professional Engineer's seal provided only for verification of windload construction details.

Printed copies of this document are not considered signed and sealed and the signature must be verified on any electronic copies.

PART NUMBER:	N/A
MATERIAL:	N/A
APPLIED FINISH:	N/A
UNIT OF MEASURE:	N/A
APPROVALS:	DATE:
DRAWN BY:	BRAY ALLEN
CHECKED:	09/15/14
APPROVED:	

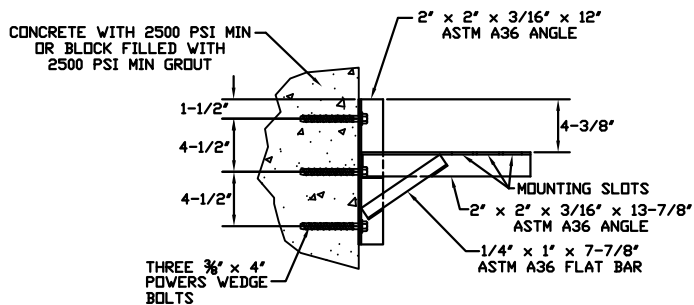
DOORS & BUILDING COMPONENTS
DOUGLASVILLE, GA CHANDLER, AZ HOUSTON, TX
©2000 DBCI ALL RIGHTS RESERVED

26 GA. WIND LOAD, MAX. SIZE 16'-0" x 20'-0"

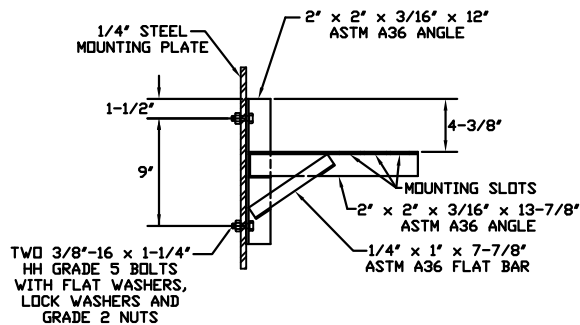
SERIES 3000 DOOR ASSEMBLY

SIZE B DRAWING NUMBER -3000-14-0001 REV. 1

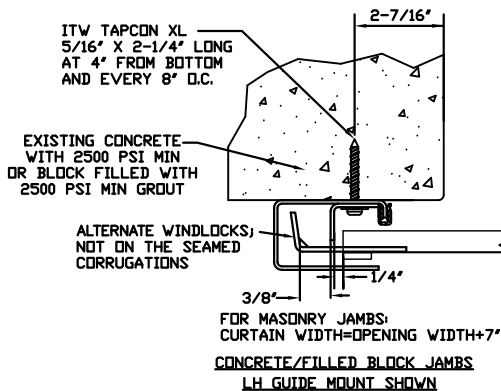
SCALE: NONE SHEET 1 OF 2



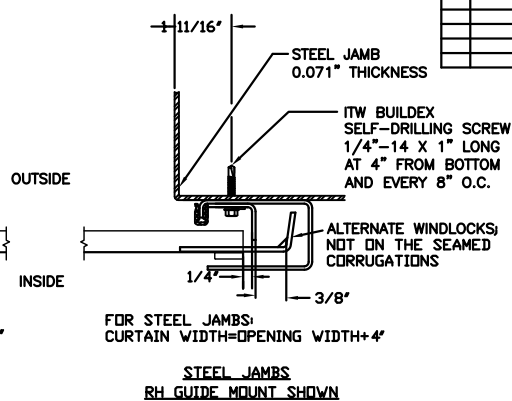
DOOR MOUNTING BRACKET TO MASONRY DETAIL



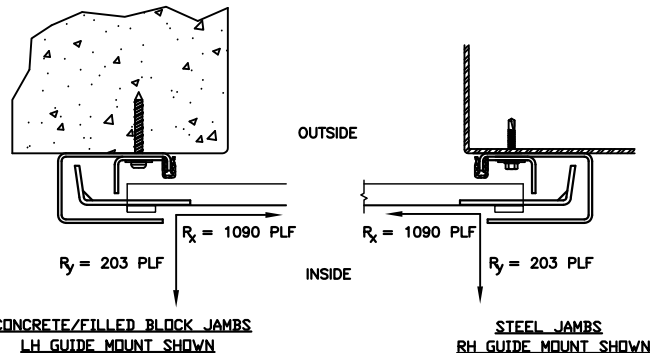
DOOR MOUNTING BRACKET TO STEEL DETAIL



CONCRETE/FILLED BLOCK JAMBS
LH GUIDE MOUNT SHOWN



STEEL JAMBS
RH GUIDE MOUNT SHOWN



SUPERIMPOSED LOAD DIAGRAM

REVISIONS			
RELEASE PER	DRN	DATE	APPROVAL

DOOR SCHEDULE

DOOR WIDTH	DESIGN PRESSURE (PSF)
≤ 8'-0"	+40.8
	-46.7
9'-0"	+36.6
	-41.9
10'-0"	+32.2
	-38.0
11'-0"	+30.3
	-34.7
12'-0"	+28.0
	-32.0
13'-0"	+24.4
	-27.9
14'-0"	+21.5
	-24.7
15'-0"	+19.2
	-22.0
16'-0"	+17.3
	-19.8

GENERAL NOTES:

1. THIS DOOR EVALUATED IN ACCORDANCE WITH TEST METHODS ASTM E330-02 AND ANSI/DASMA 108-05.
2. THIS PRODUCT EVALUATION IS GENERIC. IT DOES NOT INCLUDE INFORMATION PREPARED FOR A SPECIFIC SITE.
3. IT IS THE CONTRACTOR'S RESPONSIBILITY TO VERIFY THE STRUCTURAL CAPACITY OF THE SUBSTRATE (JAMB) TO RESIST THE LOADS IMPOSED BY THE ROLL-UP DOOR.
4. ALL DOOR JAMBS (MASONRY OR STEEL) MUST BE DESIGNED TO RESIST THE FORCES SHOWN IN SUPERIMPOSED LOAD DIAGRAM.
5. THE DOOR ASSEMBLY SHALL BE INSTALLED IN ACCORDANCE WITH THE MANUFACTURER'S INSTALLATION INSTRUCTIONS.

JOHN E. SCATES PE
3121 FAIRGATE
CARROLLTON, TX 75007

FL PE 51737
TX PE 56308/F-2203

THESE CONFIDENTIAL DOCUMENTS SUBMITTED BY DBCI CONTAIN INFORMATION OF A PROPRIETARY NATURE AND MAY NOT BE REPRODUCED OR USED TO MANUFACTURE ANYTHING IN PART OR IN WHOLE FOR ANY PURPOSE OTHER THAN THAT WHICH IS NECESSARY FOR PREPARATION OF BIDS OR ENGINEERING WITHOUT THE EXPRESS PERMISSION OF DBCI WHICH MAY RECALL DOCUMENTS AT ANY TIME.

PART NUMBER		N/A
MATERIAL		N/A
APPLIED FINISH		N/A
UNIT OF MEASURE		N/A
APPROVALS		DATE
DRAWN	BRAY ALLEN	09/15/14
CHECKED	BRAY ALLEN	
APPROVED		

DOORS & BUILDING COMPONENTS DOUGLASVILLE, GA CHANDLER, AZ HOUSTON, TX © 2000 DBCI ALL RIGHTS RESERVED	
26 GA. WIND LOAD, MAX. SIZE 16'-0" x 20'-0"	
SERIES 3000 DOOR ASSEMBLY	
SIZE	REV.
B	
DRAWING NUMBER	
-3000-14-0001	
SCALE	SHEET
NONE	2 OF 2