

4

3

2

1

BRAND	EMBOSS TYPE		
	SHORT	LONG	FLUSH
CLOPAY	9200, HDP20	9203, HDPL20	9201, HDPF20
IDEAL	8200	8203	8201
HOLMES	7200	7203	7201

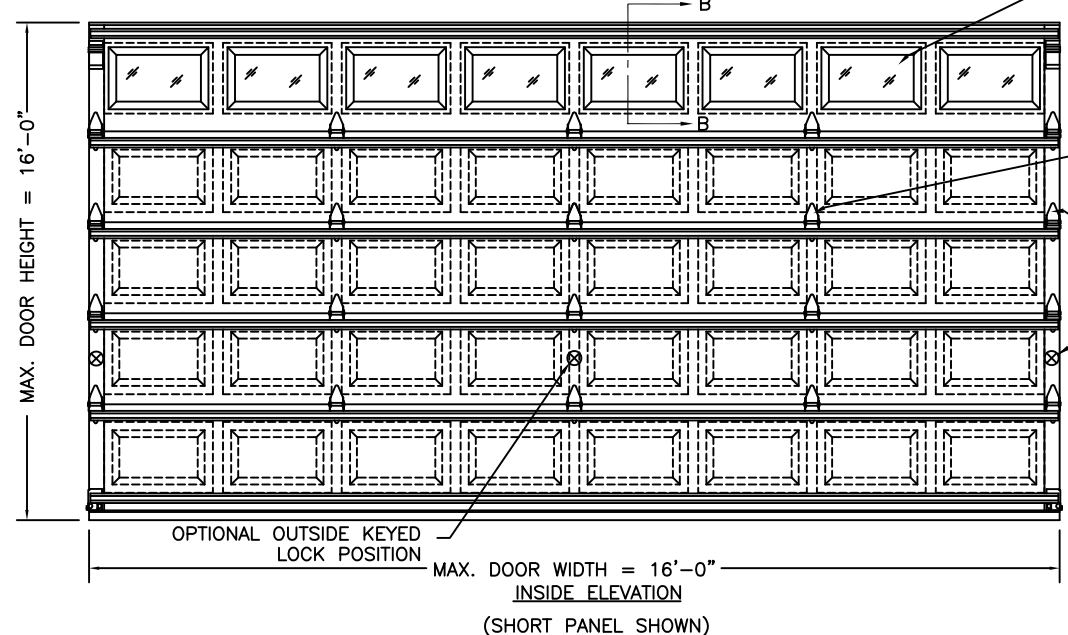
DOOR HEIGHT	# OF SECTIONS
UP TO 7'0"	4
7'3" TO 8'9"	5
9'0" TO 10'6"	6
10'9" TO 12'3"	7
12'6" TO 14'0"	8
14'3" TO 15'9"	9
16'0"	10
MAX SECTION HEIGHT: 21'	

THE OPTIONAL GLAZING SHOWN ON THIS DRAWING MEETS THE WIND LOAD REQUIREMENTS OF THE FLORIDA BUILDING CODE OR INTERNATIONAL BUILDING CODE BUT DOES NOT MEET THE IMPACT RESISTANT REQUIREMENT FOR WINDBORNE DEBRIS REGIONS (REF. CHAPTER 16 FBC/IBC)

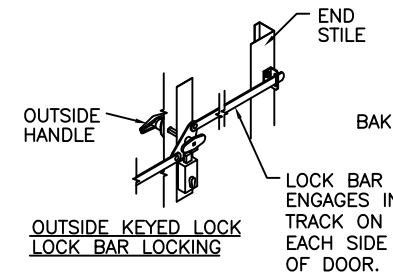
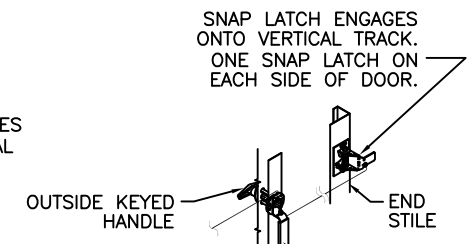
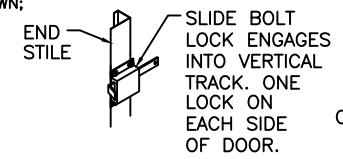
REVISIONS					
REV. NO.	ZONE:	DATE:	ECN NO.	APPVD:	DESCRIPTION
00	-	-	-	SH	INITIAL RELEASE

D

D

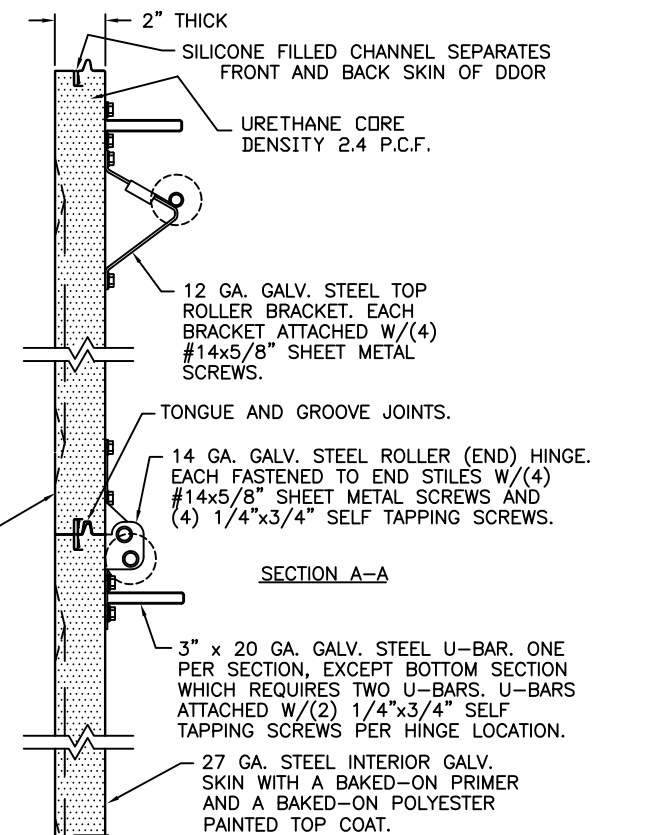


OPTIONAL WINDOW LITE. DSB GLASS, DOUBLE-PANE INSULATED OR 1/8" ACRYLIC AVAILABLE. OPTIONAL ACRYLIC GLAZING IS PLASKOLITE OPTIX OR LUCITE CP APPROVED CC2 PLASTIC IN ACCORDANCE WITH IBC/FBC 2606. SEE SECTION B-B. SHORT PANEL LITE SHOWN; MAX. LITE SIZE IS 42"x16".



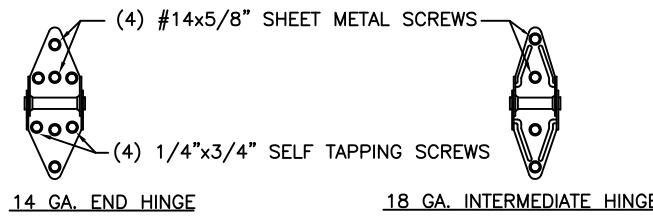
THIS DOOR MEETS OR EXCEEDS THE DESIGN LOADS FOR THE WIND SPEEDS LISTED BELOW ACCORDING TO THE FLORIDA BLDG. CODE OR IBC (ASCE7) FOR THE FOLLOWING CONDITIONS: 1) ENCLOSED BUILDING, 2) DOOR HAS 2' OF WIDTH IN BUILDING'S END ZONE, 3) IMPORTANCE FACTOR OF 1.0, 4) ANY ROOF SLOPE, AND 5) 50% SAFETY FACTOR.

WIND SPEED (MPH)	≤ 100	110	120
EXPOSURE LEVEL	B or C	B	C
MEAN ROOF HEIGHT	30'	30'	17', 30'



C

C



HORIZONTAL TRACK SUPPORT BY TRACK CONFIGURATION DOOR INSTALLER (TO SUIT) 8' TALL DOORS AND UNDER

13 GA. GALV. STEEL FLAG BRACKET. EACH FASTENED TO WOOD JAMB WITH (3) 5/16"x1-5/8" LAG SCREWS.

NOTE: DOUBLE TRACK LOW HEADROOM IS AVAILABLE AS AN OPTION

2" GALV. STEEL TRACK, TRACK THICKNESS: .060"

TYP. 2-1/2"x12 GA. GALV. STEEL TRACK BRACKET. (4) TRACK BRACKET PER SIDE. DISTANCE BETWEEN TRACK BRACKETS NOT TO EXCEED 30" O.C. (FACTORY ATTACHED)

DOOR HEIGHT "L"	"L"
6'-6"	70"
7'-0"	76"
7'-6"	82"
8'-0"	88"

NOTE: TRACK CONFIGURATION ABOVE THE DOOR OPENING DOES NOT AFFECT THE WIND LOAD RATING OF THIS DOOR.

HORIZONTAL TRACK SUPPORT BY TRACK CONFIGURATION DOOR INSTALLER (TO SUIT) DOORS OVER 8' TALL

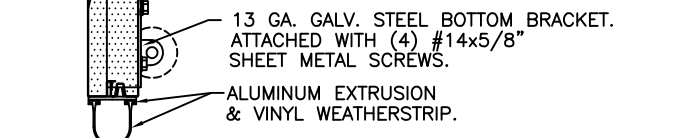
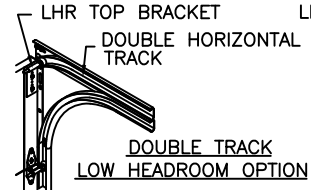
13 GA. GALV. STEEL FLAG BRACKET. EACH FASTENED TO WOOD JAMB WITH (3) 5/16"x1-5/8" LAG SCREWS.

2" GALV. STEEL TRACK, TRACK THICKNESS: .060" MIN.

NOTE: FOR DOORS OVER 12'-0" HIGH, TRACK CONFIGURATION SHALL NOT EXCEED MAXIMUM SPACING PROVIDED. CONSULT FACTORY FOR MORE DETAIL IF RQD.

TYP. 2-1/2"x12 GA. GALV. STEEL TRACK BRACKET. (5) TRACK BRACKETS PER SIDE (UP TO 10' HIGH), (6) TRACK BRACKETS PER SIDE (UP TO 12' HIGH). DISTANCE BETWEEN FLAG AND TOP TRACK BRACKET NOT TO EXCEED 30" O.C.

DOOR HEIGHT "L"	"L"
8'-6"	94"
9'-0"	100"
9'-6"	106"
10'-0"	112"
10'-6"	118"
11'-0"	124"
11'-6"	130"
12'-0"	136"



FRONT FRAME WITH U.V. COATING ON OUTSIDE SURFACE.

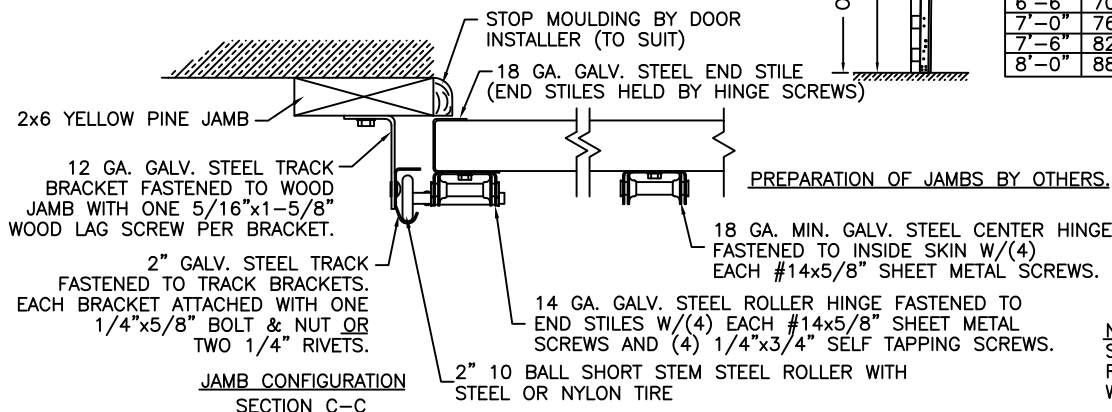
GLAZING (SINGLE PANE SHOWN, MAY BE INSULATED DOUBLE PANE).

#8x3/4" PAN HEAD SCREW (1 SCREW PER EMBOSSED PILOT HOLE).

B

B

VERTICAL JAMB ATTACHMENT (C-90 BLOCK OR 2,000 PSI MIN. CONCRETE COLUMN): 3/8"x4" SLEEVE ANCHOR BOLTS ON 20" CENTERS (C-90 BLOCK) OR 24" CENTERS (2,000 PSI MIN. CONCRETE) OR 1/4"x4" TAPCON SCREWS ON 16-3/4" CENTERS (2,000 PSI MIN. CONCRETE). WASHERS INCLUDED WITH SLEEVE ANCHORS, 1" O.D. MIN. WASHERS REQUIRED WITH TAPCONS. ANCHORS MAY BE COUNTERSUNK (BUT NOT REQUIRED) TO PROVIDE A FLUSH MOUNTING SURFACE. HORIZONTAL JAMBS DO NOT TRANSFER LOAD.



VERTICAL JAMB ATTACHMENT (WOOD FRAME BUILDINGS): 1/2"x3" LAG SCREWS ON 17.5" CENTERS. 1" O.D. MIN. WASHER REQUIRED. LAG SCREWS MAY BE COUNTERSUNK (BUT NOT REQUIRED) TO PROVIDE A FLUSH MOUNTING SURFACE. HORIZONTAL JAMBS DO NOT TRANSFER LOAD.

NOTE: THE DESIGN OF THE SUPPORTING STRUCTURAL ELEMENTS SHALL BE THE RESPONSIBILITY OF THE PROFESSIONAL OF RECORD FOR THE BUILDING OR STRUCTURE AND IN ACCORDANCE WITH CURRENT BUILDING CODES FOR THE LOADS LISTED ON THIS DRAWING.

DESIGN ENGINEER: MARK WESTERFIELD, P.E. FLORIDA P.E. #48495, NC P.E. #23832, TEXAS P.E. #91513 ORIGINAL DRAWINGS ARE SIGNED IN BLUE INK WITH A RAISED SEAL (EMBOSS).

DESIGN LOADS: +25.5 PSF & -25.5 PSF TEST LOADS: +38.0 PSF & -38.0 PSF

MANUFACTURING PRODUCT CODE: MPC: DSIU-1F171

Unless Stated Otherwise TOLERANCES are
 .0 = ±.031
 .00 = ±.015
 .000 = ±.005
 .0000 = ±.001
 Degrees = ±1/2"
 Unless Stated Otherwise DIMENSIONS ARE IN INCHES.

Clopay Building Products Company
 8585 Duke Boulevard
 Mason, OH 45040 USA
 Tel. No. 513-770-4800
 Fax No. 513-770-4853

CLOPAY WINDLOAD RATING
W4

DESCRIPTION: 9200 SERIES: 2" RESI PUR ±25.5 PSF DOUBLE CAR	SCALE: NTS	DWG. B
DRAWN BY: SH	DATE: 05/25/09	SHEET 1 OF 1
CHECKED BY: SH	DATE: 06/05/09	SIZE B
DWG. NO.: 104169	VER: IBC	

4

3

2

FLORIDA PRODUCT APPROVAL 5675