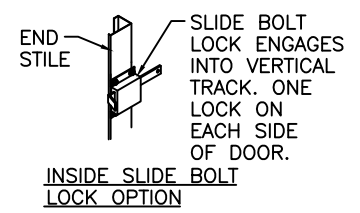
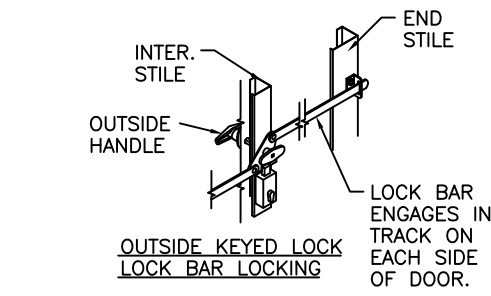
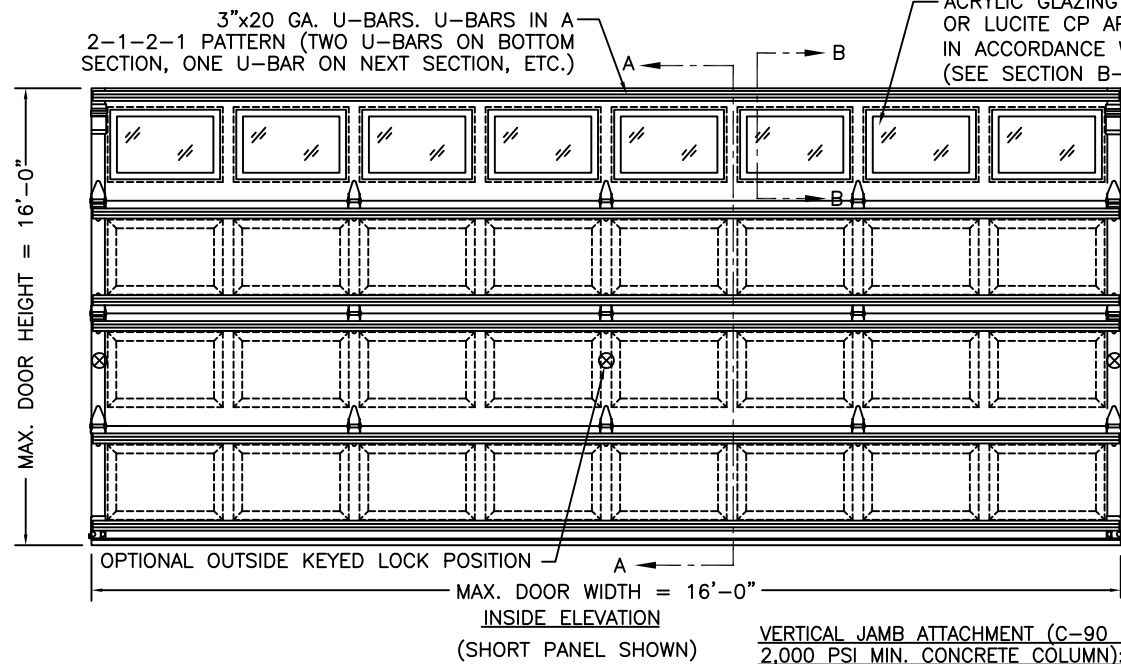


MODELS	27 GA SHORT	27 GA FLUSH	27 GA LONG
CLOPAY	2050, 4050	2051, 4051	4053, 2053
HOLMES	62, 62G, 62LG, 6130	65, 6131	64, 64G, 6133
IDEAL	135, SDP38	136, SFL38	134, SRP38

REV	DATE	DESCRIPTION
07	05/2004	ADD M/N 2053
08	05/2005	UPDATED CODE REF.
09	09/2005	ADDED ROLLER OPTION
10	11/30/07	COMBINED IDEAL, HOLMES, & CLOPAY M/N
11	10/21/08	ADDED M/N 62G AND 64G, ADDED MPC
12	01/26/11	UPDATED MODEL NUMBERS.

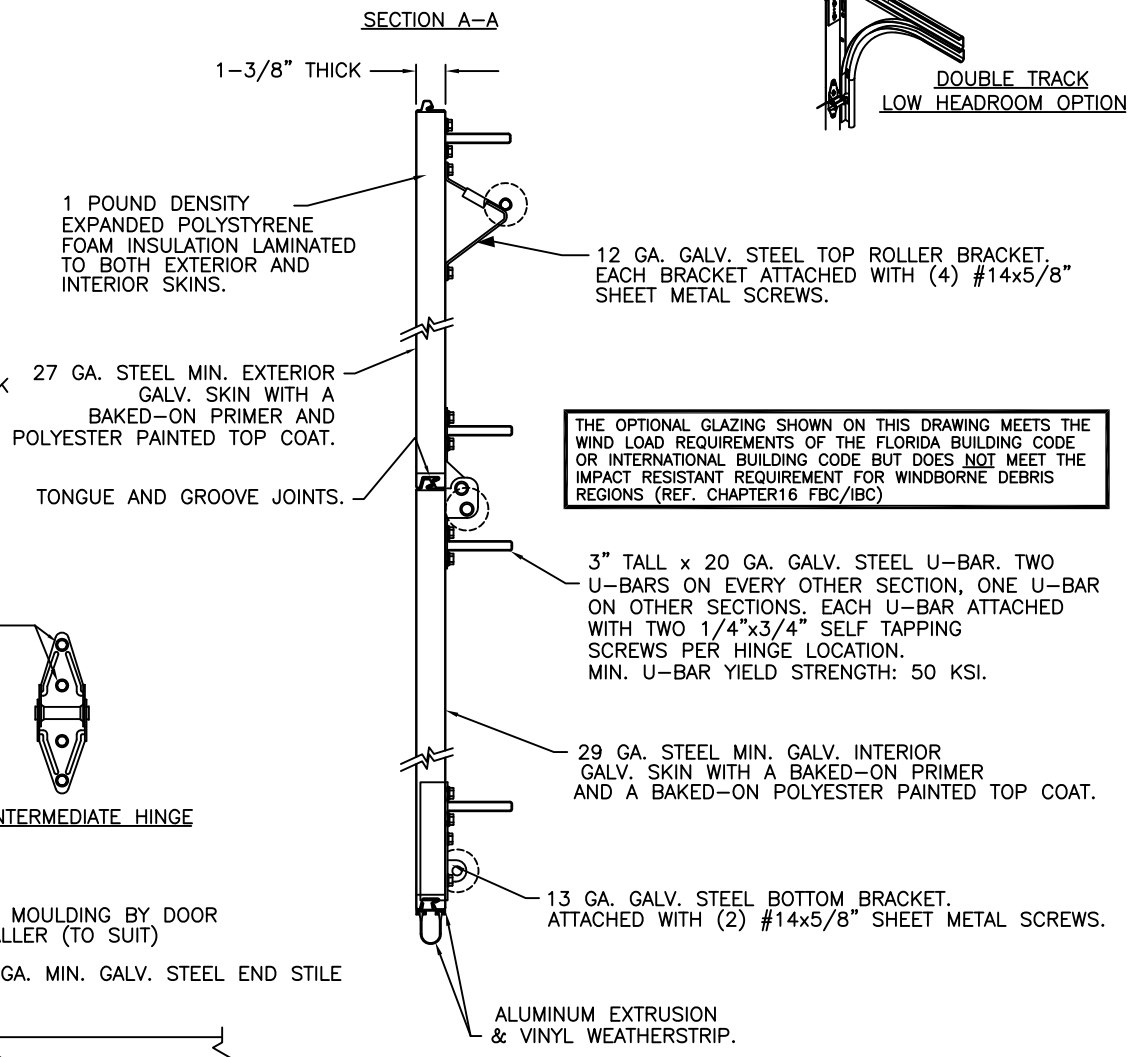
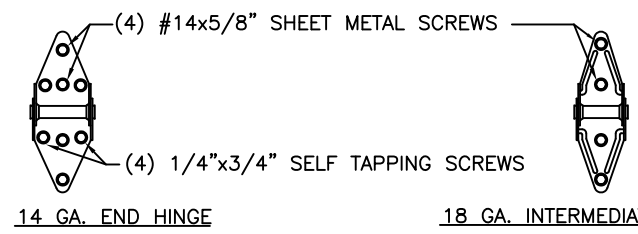
NOTE: MAXIMUM SECTION HEIGHT IS 21"

OPTIONAL 1/8" ACRYLIC OR SSB GLASS LITES AVAILABLE. OPTIONAL ACRYLIC GLAZING IS PLASKOLITE OPTIX OR LUCITE CP APPROVED CC2 PLASTIC IN ACCORDANCE WITH IBC/FBC 2606 (SEE SECTION B-B)

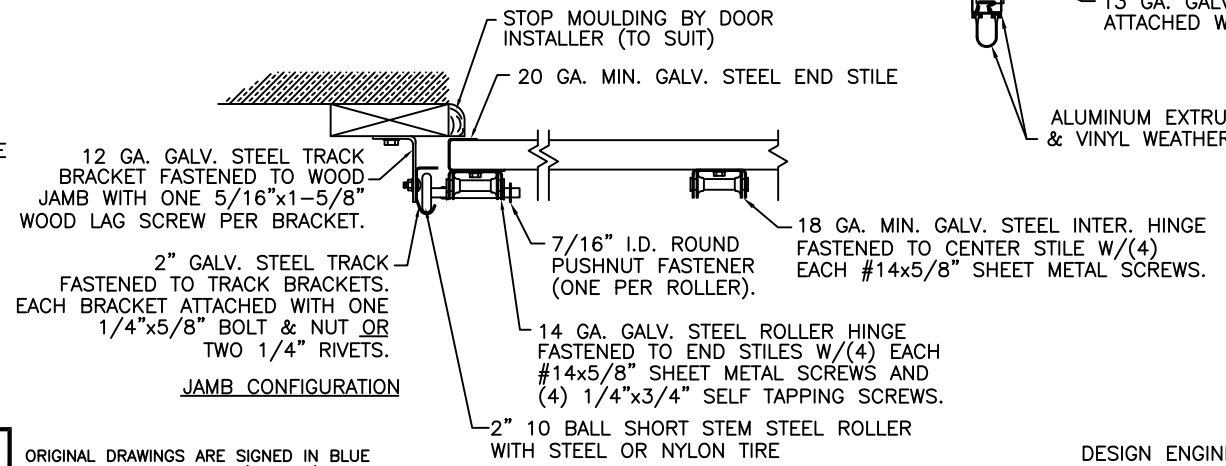
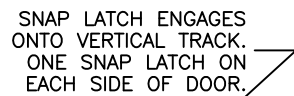
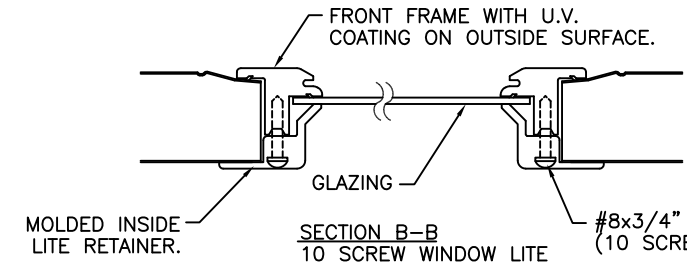


VERTICAL JAMB ATTACHMENT (WOOD FRAME BUILDINGS): 1/2"x3" LAG SCREWS ON 22.5" CENTERS. 1" O.D. MIN. WASHER REQUIRED. LAG SCREWS MAY BE COUNTERSUNK (BUT NOT REQUIRED) TO PROVIDE A FLUSH MOUNTING SURFACE. HORIZONTAL JAMBS DO NOT TRANSFER LOAD.

VERTICAL JAMB ATTACHMENT (C-90 BLOCK OR 2,000 PSI MIN. CONCRETE COLUMN): 3/8"x4" SLEEVE ANCHORS ON 24" CENTERS (BOTH C-90 BLOCK OR 2,000 PSI MIN. CONCRETE) OR 1/4"x4" TAPCON SCREWS ON 21" CENTERS (2,000 PSI MIN. CONCRETE). WASHERS INCLUDED WITH SLEEVE ANCHORS, 1" O.D. MIN. WASHERS REQUIRED WITH TAPCONS. ANCHORS MAY BE COUNTERSUNK (BUT NOT REQUIRED) TO PROVIDE A FLUSH MOUNTING SURFACE. HORIZONTAL JAMBS DO NOT TRANSFER LOAD.



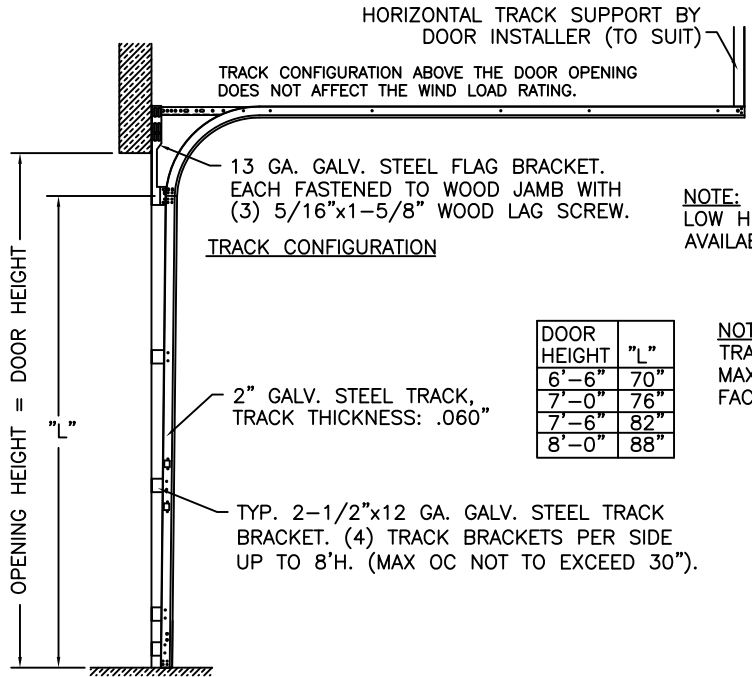
THE OPTIONAL GLAZING SHOWN ON THIS DRAWING MEETS THE WIND LOAD REQUIREMENTS OF THE FLORIDA BUILDING CODE OR INTERNATIONAL BUILDING CODE BUT DOES NOT MEET THE IMPACT RESISTANT REQUIREMENT FOR WINDBORNE DEBRIS REGIONS (REF. CHAPTER 16 FBC/IBC)



NOTE: THE DESIGN OF THE SUPPORTING STRUCTURAL ELEMENTS SHALL BE THE RESPONSIBILITY OF THE PROFESSIONAL OF RECORD FOR THE BUILDING OR STRUCTURE AND IN ACCORDANCE WITH CURRENT BUILDING CODES FOR THE LOADS LISTED ON THIS DRAWING.

DESIGN LOADS: +20.0 PSF & -21.0 PSF
TEST LOADS: +30.0 PSF & -31.0 PSF

DESIGN ENGINEER: MARK WESTERFIELD, P.E.
FLORIDA P.E. #48495, NC P.E. #23832, TEXAS P.E. #91513



NOTE: DOUBLE TRACK LOW HEADROOM IS AVAILABLE AS AN OPTION

NOTE: FOR DOORS OVER 8'-0" HIGH, TRACK CONFIGURATION SHALL NOT EXCEED MAXIMUM SPACING PROVIDED. CONSULT FACTORY FOR MORE DETAIL IF RQD.

THIS DOOR MEETS OR EXCEEDS THE DESIGN LOADS FOR THE WIND SPEEDS LISTED BELOW ACCORDING TO THE FLORIDA BLDG. CODE OR IBC (ASCE7) FOR THE FOLLOWING CONDITIONS: 1) ENCLOSED BUILDING, 2) DOOR HAS 2' OF WIDTH IN BUILDING'S END ZONE, 3) IMPORTANCE FACTOR OF 1.0, 4) ANY ROOF SLOPE, AND 5) 50% SAFETY FACTOR.

WIND SPEED (MPH)	≤ 90	100	100	110
EXPOSURE LEVEL	B OR C	B	C	B
MEAN ROOF HEIGHT	30'	30'	17'	30'

ORIGINAL DRAWINGS ARE SIGNED IN BLUE INK WITH A RAISED SEAL (EMBOSS)

Clopay
Building Products
Company

CLOPAY BUILDING PRODUCTS COMPANY
8585 DUKE BLVD.
MASON, OH 45040
(513) 770-4800

Clopay Corporation All Rights Reserved.

MANUFACTURING PRODUCT CODE: MPC: DSIE-1A171	WINDLOAD RATING W3	MAX. DOOR SIZE: 16'W x 16'H
DATE: 4/16/98	DESCRIPTION: 2050/4050/4053, +20/-21 DES.	
DRAWN BY: MWW	DRAWING NUMBER: 101820	VER: IBC
CHECKED BY:		