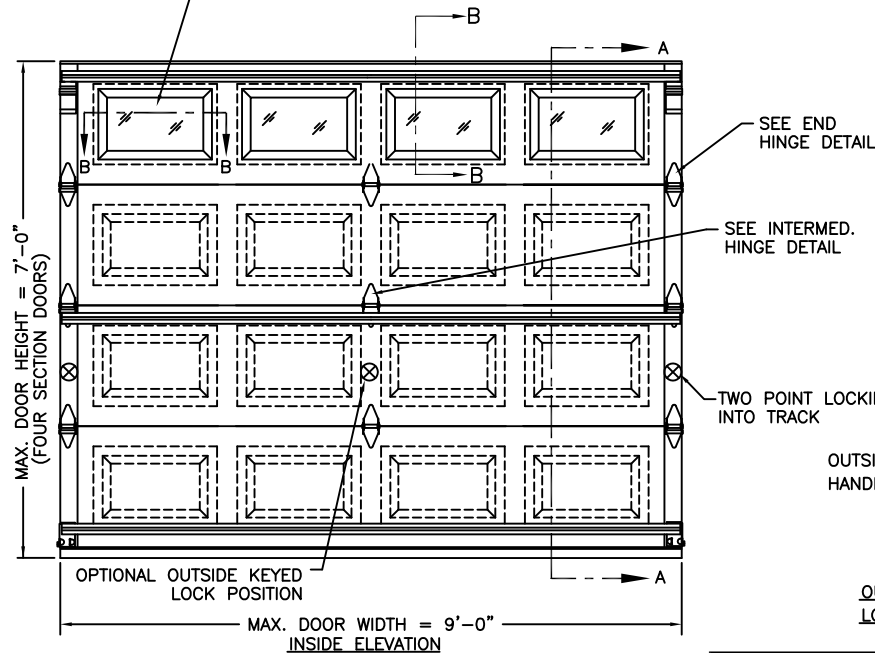


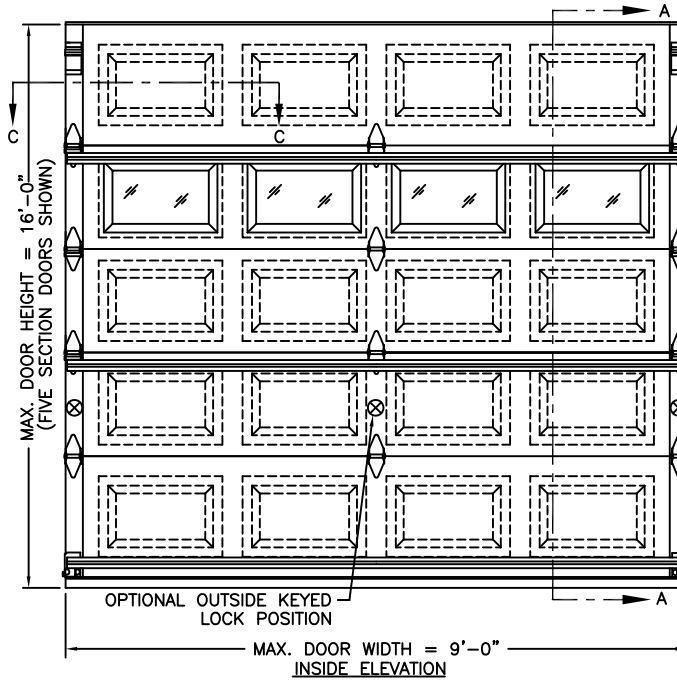
MODELS	27 GA SHORT	27 GA FLUSH	27 GA LONG
CLOPAY	2050, 4050	2051, 4051	4053, 2053
HOLMES	62, 62G, 62LG, 6130	65, 6131	64, 64G, 6133
IDEAL	135, SDP38	136, SFL38	134, SRP38

NOTE: MAXIMUM SECTION HEIGHT IS 21"

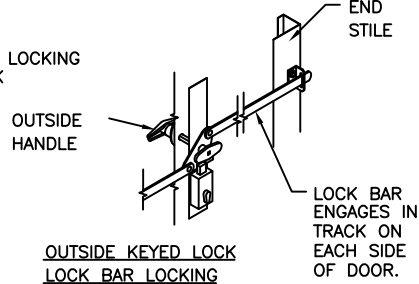
OPTIONAL WINDOW LITES DSB GLASS OR 1/8" ACRYLIC AVAILABLE. OPTIONAL ACRYLIC GLAZING IS PLASKOLITE OPTIX OR LUCITE CP APPROVED CC2 PLASTIC IN ACCORDANCE WITH IBC/FBC 2606. (SEE SECTION B-B)



SHORT PANEL SHOWN



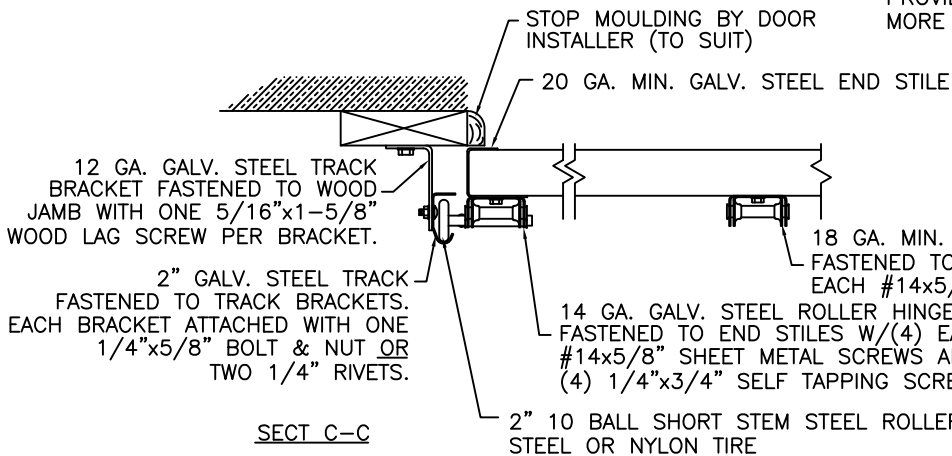
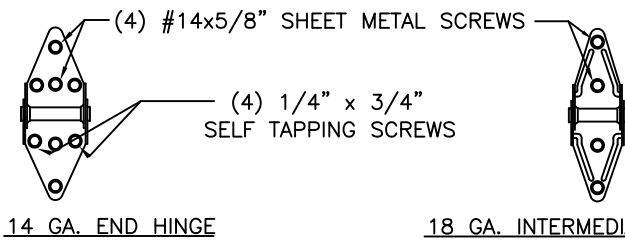
SHORT PANEL SHOWN



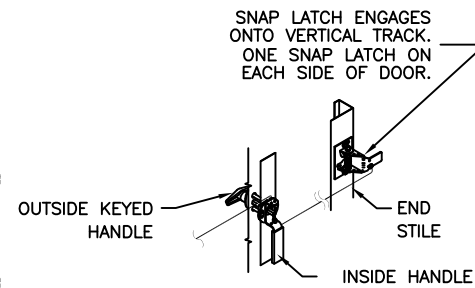
THIS DOOR MEETS OR EXCEEDS THE DESIGN LOADS FOR THE WIND SPEEDS LISTED BELOW ACCORDING TO THE FLORIDA BLDG. CODE OR IBC (ASCE7) FOR THE FOLLOWING CONDITIONS: 1) ENCLOSED BUILDING, 2) DOOR HAS 2' OF WIDTH IN BUILDING'S END ZONE, 3) IMPORTANCE FACTOR OF 1.0, 4) ANY ROOF SLOPE, AND 5) 50% SAFETY FACTOR.

WIND SPEED (MPH)	≤ 90	90	100	100
EXPOSURE LEVEL	B	C	B	C
MEAN ROOF HEIGHT	30'	25'	30'	N/A

NOTE: FOR DOORS OVER 8'-0" HIGH, TRACK CONFIGURATION SHALL NOT EXCEED MAXIMUM SPACING PROVIDED. CONSULT FACTORY FOR MORE DETAIL IF RQD.



SECT C-C



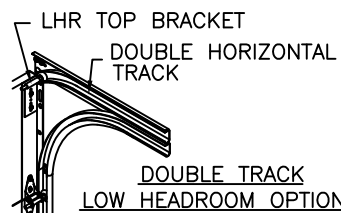
OUTSIDE KEYED LOCK SNAP LATCH LOCK OPTION

TWO POINT LOCKING INTO TRACK

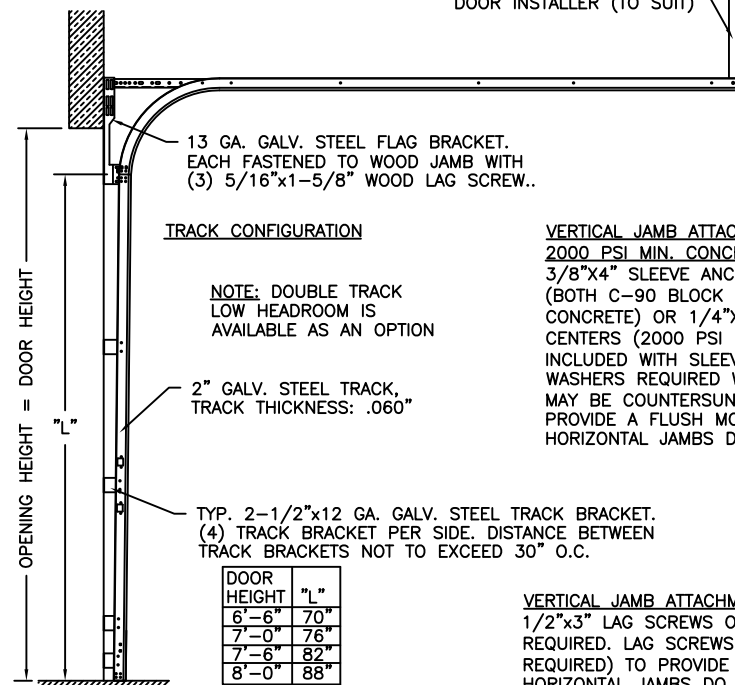
1 POUND DENSITY EXPANDED POLYSTYRENE FOAM INSULATION LAMINATED TO BOTH EXTERIOR AND INTERIOR SKINS.

27 GA. STEEL MIN. EXTERIOR SKIN WITH G-40 GALVANIZING, BAKED-ON PRIMER AND A BAKED-ON POLYESTER PAINTED TOP COAT.

THE OPTIONAL GLAZING SHOWN ON THIS DRAWING MEETS THE WIND LOAD REQUIREMENTS OF THE FLORIDA BUILDING CODE OR INTERNATIONAL BUILDING CODE BUT DOES NOT MEET THE IMPACT RESISTANT REQUIREMENT FOR WINDBORNE DEBRIS REGIONS (REFER TO CHAPTER 16 FBC / IBC).



HORIZONTAL TRACK SUPPORT BY DOOR INSTALLER (TO SUIT)

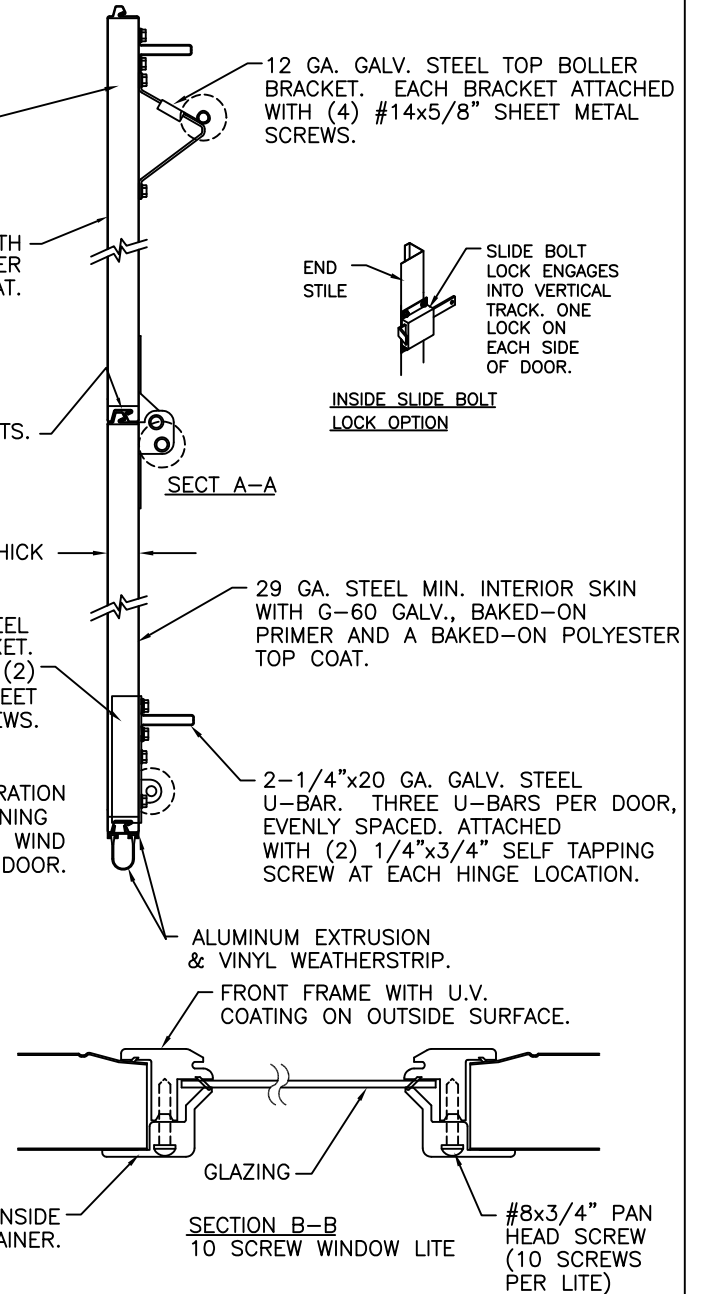


NOTE: THE DESIGN OF THE SUPPORTING STRUCTURAL ELEMENTS SHALL BE THE RESPONSIBILITY OF THE PROFESSIONAL OF RECORD FOR THE BUILDING OR STRUCTURE AND IN ACCORDANCE WITH CURRENT BUILDING CODES FOR THE LOADS LISTED ON THIS DRAWING.

NOTE: TRACK CONFIGURATION ABOVE THE DOOR OPENING DOES NOT AFFECT THE WIND LOAD RATING OF THIS DOOR.

VERTICAL JAMB ATTACHMENT (C-90 BLOCK OR 2000 PSI MIN. CONCRETE COLUMN): 3/8"x4" SLEEVE ANCHORS ON 24" CENTERS (BOTH C-90 BLOCK OR 2000 PSI MIN. CONCRETE) OR 1/4"x4" TAPCON SCREWS ON 24" CENTERS (2000 PSI MIN. CONCRETE). WASHERS INCLUDED WITH SLEEVE ANCHORS. 1" O.D. WASHERS REQUIRED WITH TAPCONS. ANCHORS MAY BE COUNTERSUNK (BUT NOT REQUIRED) TO PROVIDE A FLUSH MOUNTING SURFACE. HORIZONTAL JAMBS DO NOT TRANSFER LOAD.

VERTICAL JAMB ATTACHMENT (WOOD FRAME BUILDINGS): 1/2"x3" LAG SCREWS ON 24" CENTERS. 1" O.D. WASHER REQUIRED. LAG SCREWS MAY BE COUNTERSUNK (BUT NOT REQUIRED) TO PROVIDE A FLUSH MOUNTING SURFACE. HORIZONTAL JAMBS DO NOT TRANSFER LOAD.



SECTION B-B

REV	DATE	DESCRIPTION
6	5/2004	ADD M/N 2053
7	7/2005	UPDATED CODE REF.
8	9/2005	ADDED ROLLER OPTION
9	11/30/07	COMBINED CLOPAY, IDEAL & HOLMES M/N
10	10/21/08	ADDED M/N 62G AND 64G, ADDED MPC
11	01/26/11	UPDATED MODEL NUMBERS.

Clopay
Building Products
Company

CLOPAY BUILDING PRODUCTS COMPANY
8585 DUKE BLVD.
MASON, OH 45040

(513) 770-4800

Clopay Corporation All Rights Reserved.

MANUFACTURING PRODUCT CODE: MPC: DSIE-1A171	PLAT: N/A	MAX. SIZE: 9'0" x 16'0"
DATE: 7/17/96	DESCRIPTION: 2050/4050/4053: 20 PSF DES. LOAD	
DRAWN BY: MWW	DRAWING NUMBER: B	VER: 101655 IBC

FLORIDA PRODUCT APPROVAL 5675