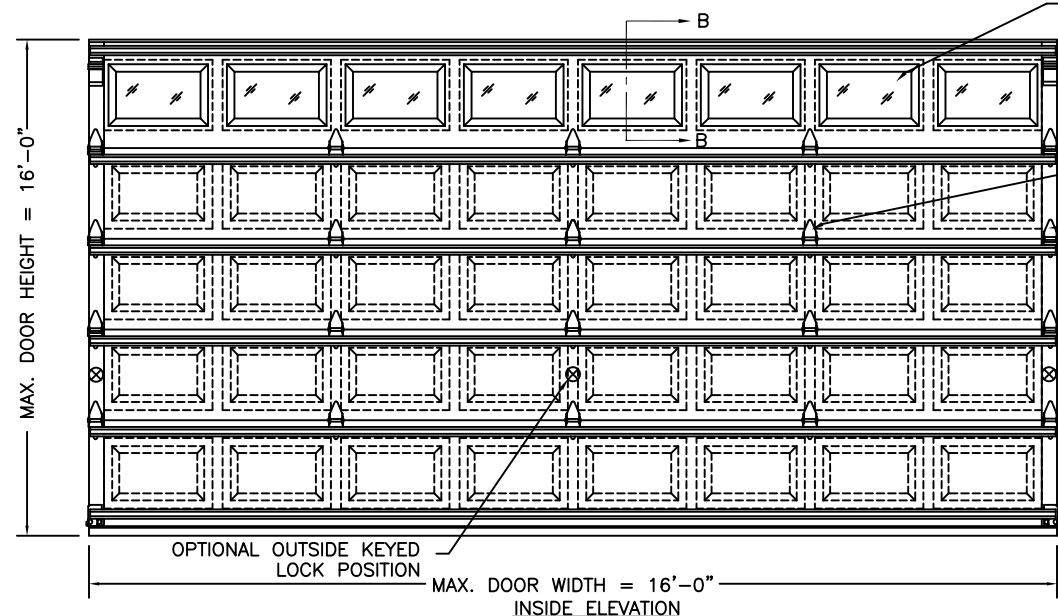


MODELS	24 GA SHORT	27 GA SHORT	27 GA FLUSH	27 GA LONG	DOOR HEIGHT	# OF SECTIONS
CLOPAY	4400, 4401	4300, HDG	4301, HDGF	4310, HDGL	UP TO 7'0"	4
					7'3" TO 8'0"	5
					8'3" TO 8'9"	5
					9'0" TO 10'6"	6
					10'9" TO 12'3"	7
HOLMES	--	66, 66G, 6200	68, 6201	67, 67G, 6203	12'6" TO 14'0"	8
					14'3" TO 15'9"	9
					16'0"	10
IDEAL	--	SP200	SF200	SE200	MAX SECTION HEIGHT: 21'	

THE OPTIONAL GLAZING SHOWN ON THIS DRAWING MEETS THE WIND LOAD REQUIREMENTS OF THE FLORIDA BUILDING CODE OR INTERNATIONAL BUILDING CODE BUT DOES NOT MEET THE IMPACT RESISTANT REQUIREMENT FOR WINDBORNE DEBRIS REGIONS (REF. CHAPTER 16 FBC/IBC)

REV	DATE	DESCRIPTION
8	9/2005	ADDED ROLLER OPTION
9	11/30/07	ADDED EXTENDED HEIGHTS AND COMBINED CLOPAY AND HOLMES M/N
10	05/12/08	ADDED MPC INFO AND HDGF, 66G, 67G
11	02/07/11	UPDATED MODEL NUMBERS.

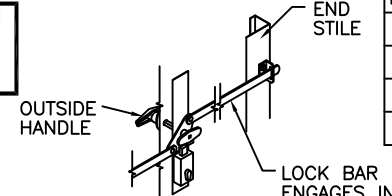


OPTIONAL WINDOW LITES DSB GLASS OR 1/8" ACRYLIC AVAILABLE. OPTIONAL ACRYLIC GLAZING IS PLASKOLITE OPTIX OR LUCITE CP APPROVED CC2 PLASTIC IN ACCORDANCE WITH IBC/FBC 2606. (SEE SECTION B-B)

SEE INTERMEDIATE HINGE DETAIL

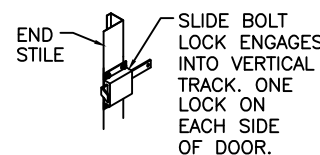
SEE END HINGE DETAIL

LOCK POSITION (BOTH SIDES)



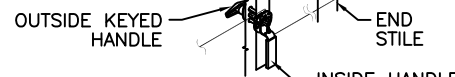
OUTSIDE KEYED LOCK LOCK BAR LOCKING

LOCK BAR ENGAGES IN TRACK ON EACH SIDE OF DOOR.



INSIDE SLIDE BOLT LOCK OPTION

SNAP LATCH ENGAGES ONTO VERTICAL TRACK. ONE SNAP LATCH ON EACH SIDE OF DOOR.

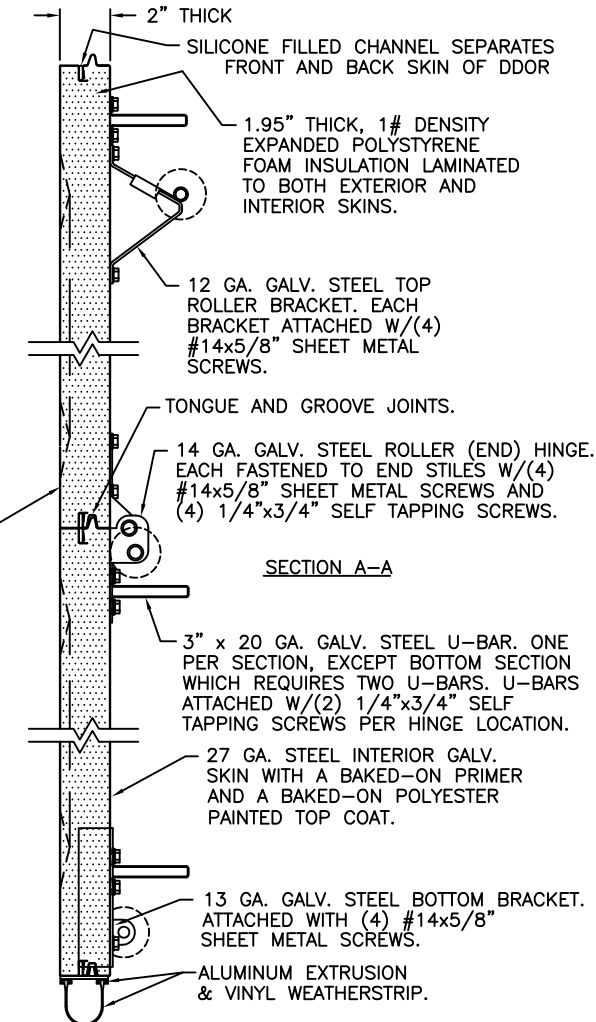


OUTSIDE KEYED LOCK SNAP LATCH LOCK OPTION

THIS DOOR MEETS OR EXCEEDS THE DESIGN LOADS FOR THE WIND SPEEDS LISTED BELOW ACCORDING TO THE FLORIDA BLDG. CODE OR IBC (ASCE7) FOR THE FOLLOWING CONDITIONS: 1) ENCLOSED BUILDING, 2) DOOR HAS 2' OF WIDTH IN BUILDING'S END ZONE, 3) IMPORTANCE FACTOR OF 1.0, 4) ANY ROOF SLOPE, AND 5) 50% SAFETY FACTOR.

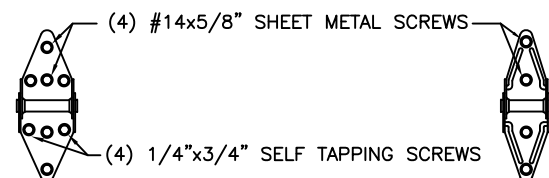
WIND SPEED (MPH)	≤ 100	110	110	120
EXPOSURE LEVEL	B or C	B	C	B
MEAN ROOF HEIGHT	30'	30'	17'	30'

27 GA. MIN. STEEL EXT. GALV. SKIN WITH A BAKED-ON PRIMER AND A BAKED-ON POLYESTER PAINTED TOP COAT.



**VERTICAL JAMB ATTACHMENT (C-90 BLOCK OR 2,000 PSI MIN. CONCRETE COLUMN):**  
3/8"x4" SLEEVE ANCHOR BOLTS ON 20" CENTERS (C-90 BLOCK) OR 24" CENTERS (2,000 PSI MIN. CONCRETE) OR 1/4"x4" TAPCON SCREWS ON 16-3/4" CENTERS (2,000 PSI MIN. CONCRETE). WASHERS INCLUDED WITH SLEEVE ANCHORS, 1" O.D. MIN. WASHERS REQUIRED WITH TAPCONS. ANCHORS MAY BE COUNTERSUNK (BUT NOT REQUIRED) TO PROVIDE A FLUSH MOUNTING SURFACE. HORIZONTAL JAMBS DO NOT TRANSFER LOAD.

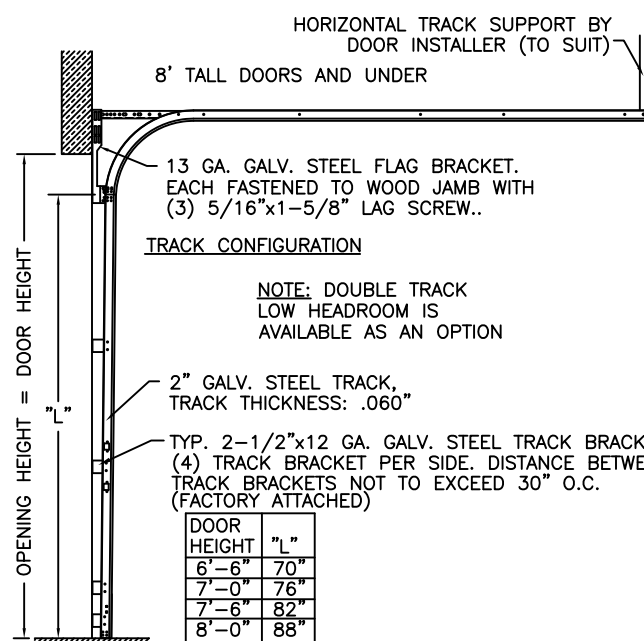
(SHORT PANEL SHOWN)



14 GA. END HINGE

18 GA. INTERMEDIATE HINGE (NOTE: 14 GA. INTERMEDIATE HINGES ON 24 GA. EXTERIOR SKIN DOOR MODELS.)

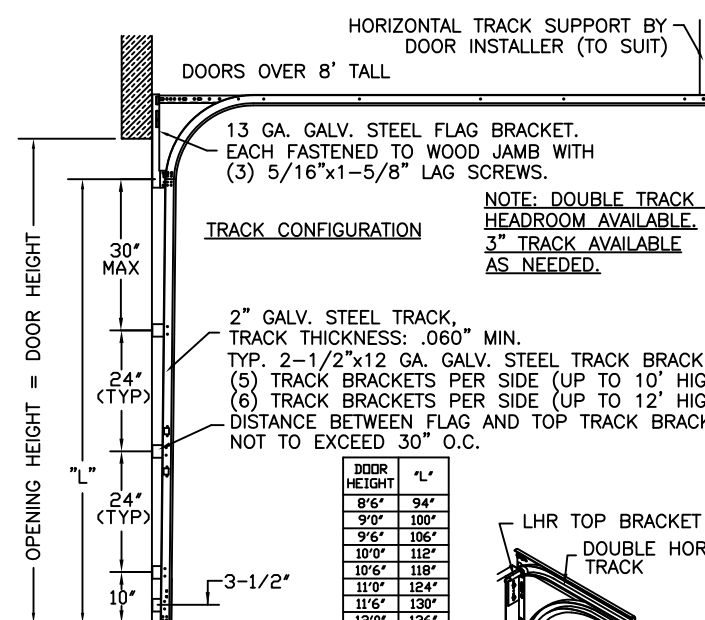
**VERTICAL JAMB ATTACHMENT (WOOD FRAME BUILDINGS):**  
1/2"x3" LAG SCREWS ON 17.5" CENTERS. 1" O.D. MIN. WASHER REQUIRED. LAG SCREWS MAY BE COUNTERSUNK (BUT NOT REQUIRED) TO PROVIDE A FLUSH MOUNTING SURFACE. HORIZONTAL JAMBS DO NOT TRANSFER LOAD.



TRACK CONFIGURATION

NOTE: DOUBLE TRACK LOW HEADROOM IS AVAILABLE AS AN OPTION

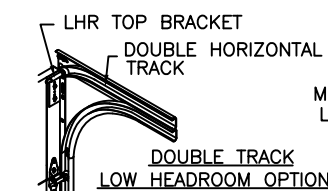
DOOR HEIGHT	"L"
6'-6"	70"
7'-0"	76"
7'-6"	82"
8'-0"	88"



TRACK CONFIGURATION

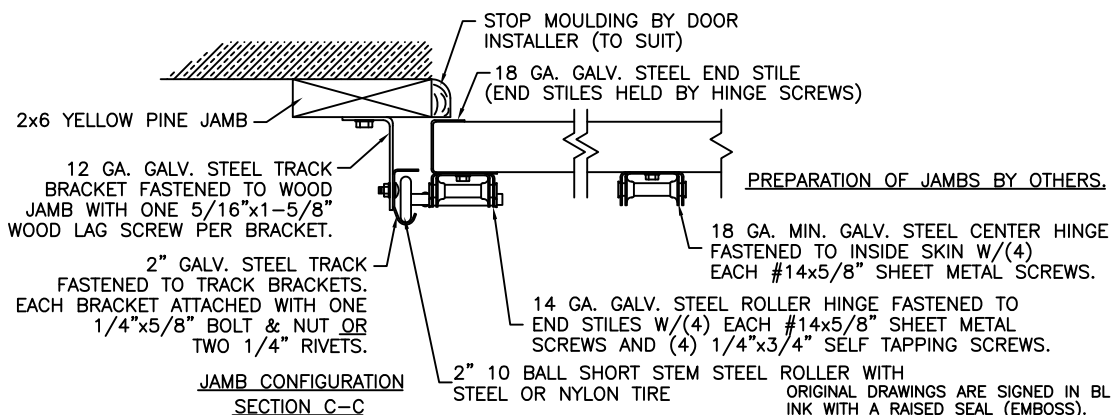
NOTE: DOUBLE TRACK LOW HEADROOM AVAILABLE. 3" TRACK AVAILABLE AS NEEDED.

DOOR HEIGHT	"L"
8'6"	94"
9'0"	100"
9'6"	106"
10'0"	112"
10'6"	118"
11'0"	124"
11'6"	130"
12'0"	136"
12'6"	142"
13'0"	148"
13'6"	154"
14'0"	160"
14'6"	166"
15'0"	172"
15'6"	178"
16'0"	184"



DOUBLE TRACK LOW HEADROOM OPTION

NOTE: TRACK CONFIGURATION ABOVE THE DOOR OPENING DOES NOT AFFECT THE WIND LOAD RATING OF THIS DOOR.



JAMB CONFIGURATION SECTION C-C

PREPARATION OF JAMBS BY OTHERS.

18 GA. MIN. GALV. STEEL CENTER HINGE FASTENED TO INSIDE SKIN W/(4) EACH #14x5/8" SHEET METAL SCREWS.

14 GA. GALV. STEEL ROLLER HINGE FASTENED TO END STILES W/(4) EACH #14x5/8" SHEET METAL SCREWS AND (4) 1/4"x3/4" SELF TAPPING SCREWS.

2" 10 BALL SHORT STEM STEEL ROLLER WITH ORIGINAL DRAWINGS ARE SIGNED IN BLUE INK WITH A RAISED SEAL (EMBOSS).

NOTE: THE DESIGN OF THE SUPPORTING STRUCTURAL ELEMENTS SHALL BE THE RESPONSIBILITY OF THE PROFESSIONAL OF RECORD FOR THE BUILDING OR STRUCTURE AND IN ACCORDANCE WITH CURRENT BUILDING CODES FOR THE LOADS LISTED ON THIS DRAWING.

DESIGN ENGINEER: MARK WESTERFIELD, P.E.  
FLORIDA P.E. #48495, NC P.E. #23832, TEXAS P.E. #91513  
DESIGN LOADS: +25.5 PSF & -25.5 PSF  
TEST LOADS: +38.0 PSF & -38.0 PSF

**Clopay**  
Building Products  
Company

CLOPAY BUILDING PRODUCTS COMPANY  
8585 DUKE BLVD.  
MASON, OH 45040

(513) 770-4800

Clopay Corporation All Rights Reserved.

MANUFACTURING PRODUCT CODE  
MPC: DSIE-1F171

DATE: 6/14/95

DRAWN BY: MWW

CHECKED BY:

WINDLOAD RATING  
W4

MAX. SIZE:  
16'0" x 16'0"

DESCRIPTION: WINDLOAD MODELS  
4400, 4401, 4310, HDG, HDGL, 4300, 4301

DRAWING NUMBER:  
B

101481

FLORIDA PRODUCT APPROVAL 5675