

PORTELLA STEEL DOORS AND WINDOWS

ARTISAN SERIES FIXED WINDOW

(HVHZ)(IMPACT)

GENERAL NOTES:

1. THE PRODUCT SHOWN HEREIN IS DESIGNED AND MANUFACTURED TO COMPLY WITH THE CURRENT EDITION OF THE FLORIDA BUILDING CODE (FBC), **INCLUDING** HVHZ AND HAS BEEN EVALUATED ACCORDING TO THE FOLLOWING:
 - TAS 201-94
 - TAS 202-94
 - TAS 203-94
 - AAMA/WDMA/CSA 101/I.S.2/A440-17
 - ASTM E1886-19
 - ASTM E1996-20
2. ADEQUACY OF THE EXISTING STRUCTURAL CONCRETE/MASONRY, 2X FRAMING, AND METAL FRAMING AS A MAIN WIND FORCE RESISTING SYSTEM CAPABLE OF WITHSTANDING AND TRANSFERRING APPLIED PRODUCT LOADS TO THE FOUNDATION IS THE RESPONSIBILITY OF THE ENGINEER OR ARCHITECT OF RECORD FOR THE PROJECT OF INSTALLATION.
3. 1X AND 2X BUCKS (WHEN USED) SHALL BE DESIGNED AND ANCHORED TO PROPERLY TRANSFER ALL LOADS TO THE STRUCTURE. BUCK DESIGN AND INSTALLATION IS THE RESPONSIBILITY OF THE ENGINEER OR ARCHITECT OF RECORD FOR THE PROJECT OF INSTALLATION.
4. INSTALL INDIVIDUAL INSTALLATION ANCHORS WITHIN A TOLERANCE OF ±1/4 INCH OF THE DEPICTED LOCATION IN THE ANCHOR LAYOUT DETAIL (I.E., WITHOUT CONSIDERATION OF TOLERANCES). TOLERANCES ARE NOT CUMULATIVE FROM ONE INSTALLATION ANCHOR TO THE NEXT.
5. THE INSTALLATION DETAILS DESCRIBED HEREIN ARE GENERIC AND MAY NOT REFLECT ACTUAL CONDITIONS FOR A SPECIFIC SITE. IF SITE CONDITIONS CAUSE INSTALLATION TO DEVIATE FROM THE REQUIREMENTS DETAILED HEREIN, A LICENSED ENGINEER OR ARCHITECT SHALL PREPARE SITE SPECIFIC DOCUMENTS FOR USE WITH THIS DOCUMENT.
6. APPROVED IMPACT PROTECTIVE SYSTEM **IS NOT REQUIRED** ON THIS PRODUCT IN AREAS REQUIRING IMPACT RESISTANCE.
7. WINDOW FRAME MATERIAL: STAINLESS STEEL 304, POLYESTER FIBERGLASS
8. GLASS MEETS THE REQUIREMENTS OF ASTM E1300 GLASS CHARTS. SEE SHEET 2 FOR GLAZING DETAILS.
9. WINDOWS WERE TESTED WITHOUT GLAZING BEAD. SEE SHEET 2 FOR OPTIONAL GLAZING BEADS.

TABLE OF CONTENTS	
SHEET	SHEET DESCRIPTION
1	GENERAL NOTES
2	GLAZING DETAILS & OPTIONAL GLAZING BEADS
3	ELEVATION & DESIGN PRESSURE TABLE
4	ANCHOR LAYOUT
5	VERTICAL SECTIONS
6	HORIZONTAL SECTIONS
7	ANCHOR DETAILS & INSTALLATION NOTES
8	ANCHOR DETAILS
9	ANCHOR DETAILS
10	BILL OF MATERIALS

DESIGN PRESSURE RATING (PSF)				
CONFIGURATION	WIDTH (IN.)	HEIGHT (IN.)	DESIGN PRESSURE	MISSILE IMPACT RATING
SEE SHEET 3				LARGE & SMALL MISSILE IMPACT




PORTELLA STEEL WINDOWS & DOORS
4111 TODD LANE, SUITE 1000
AUSTIN, TEXAS 78744
PH: (214)484-3134 FAX: (214)484-3357

TITLE: ARTISAN SERIES FIXED WINDOW (HVHZ)(IMPACT)

GENERAL NOTES

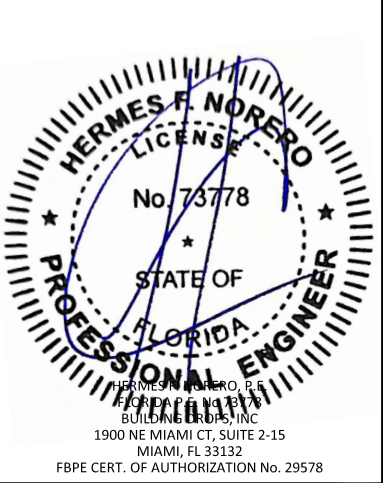
PREPARED BY:

BUILDING DROPS, INC.
1900 NE MIAMI CT, SUITE 2-15
MIAMI, FL 33132
PH: (954)399-8478
FAX: (954)744-4738
WEB: www.buildingdrops.com

BUILDING DROPS

REMARKS	BY	DATE

THIS DOCUMENT IS THE PROPERTY OF BUILDING DROPS, INC. AND SHALL NOT BE REPRODUCED IN WHOLE OR PART WITHOUT WRITTEN CONSENT OF BUILDING DROPS, INC. ALTERATIONS, ADDITIONS, HIGHLIGHTING, OR OTHER MARKINGS TO THIS DOCUMENT ARE NOT PERMITTED AND INVALIDATE OUR CERTIFICATION.



FL #:
FL47935

DATE: **11.20.2025**

DWG. BY:
HJ

CHK. BY:
HFN

SCALE: **NTS**

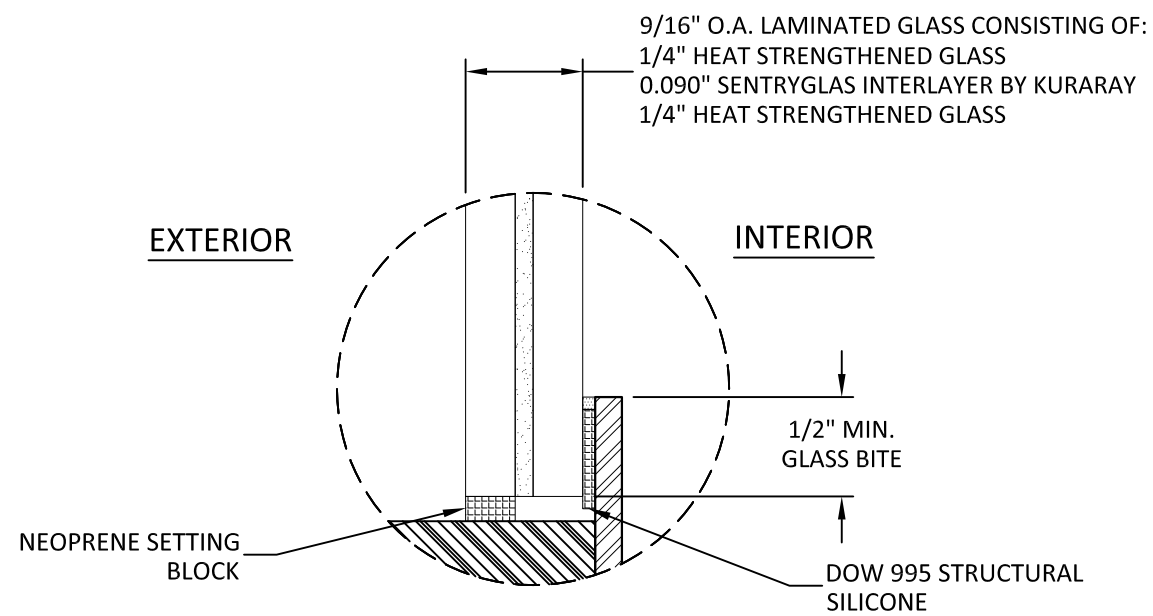
DWG. #: **POR008**

SHEET:

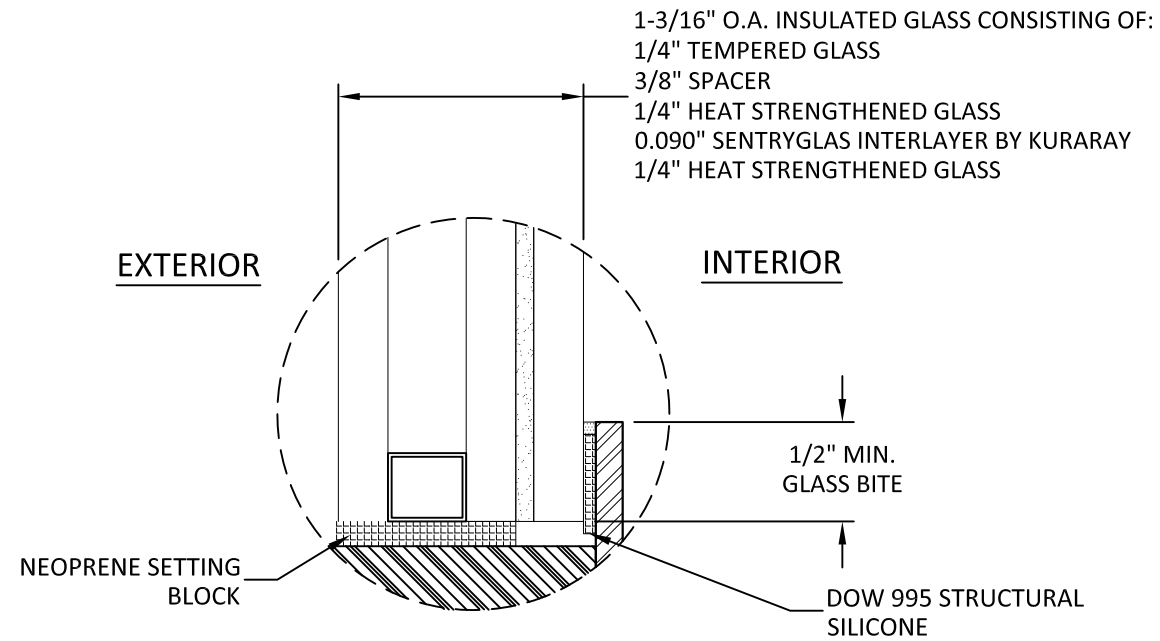
1

OF 10

c:\users\dylanwata\building drops, inc\building drops landing - common\projects\portella steel doors & windows\fb-c-22-0441.1 - fbc submittal - fx, cs, esd, mullionstiffener(dwgs)\fixed\por008-hvhz.dwg 12/10/2025 1:29 PM

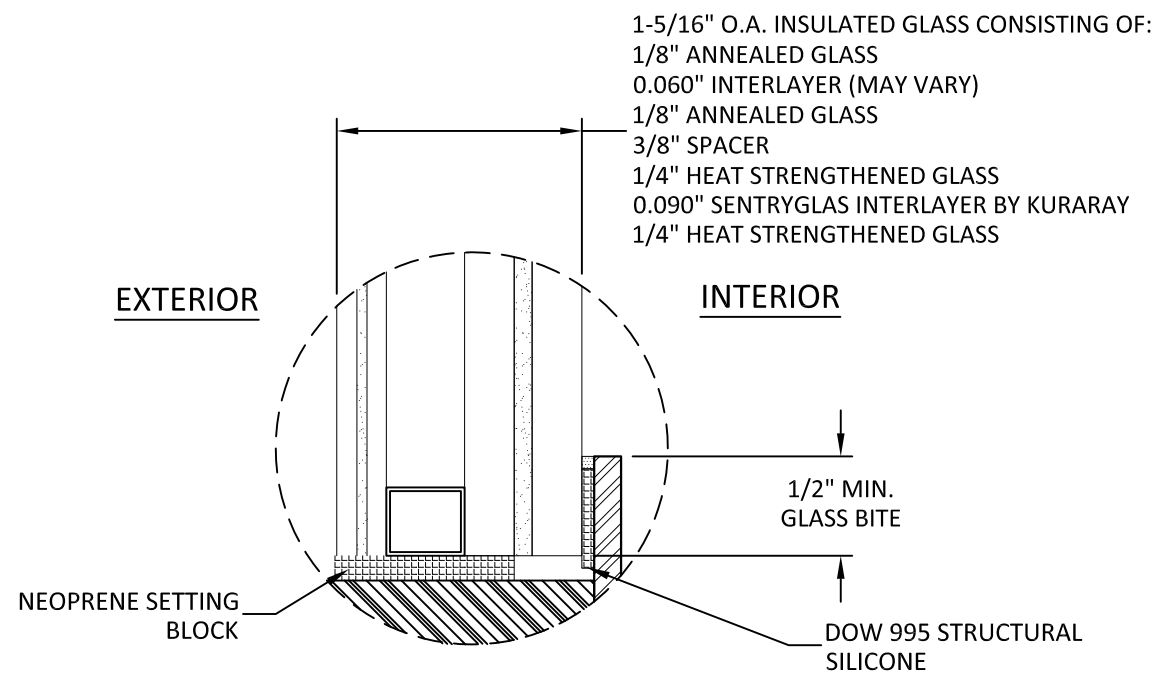
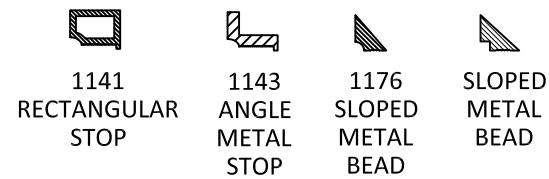


GLAZING DETAIL 1



GLAZING DETAIL 2

OPTIONAL GLAZING BEADS:



GLAZING DETAIL 3

GLAZING NOTES:

1. GLASS TYPE COMPLIES WITH ASTM E1300 AND THE FBC SAFETY GLAZING REQUIREMENTS. PER THE FBC TEMPER AND SAFETY GLAZING REQUIREMENTS SHALL BE REVIEWED ON A SITE SPECIFIC BASIS.
2. SETTING BLOCK DUROMETER HARDNESS OF 70-90 (SHORE A) AS REFERENCED IN FBC CHAPTER 24.
3. SETTING BLOCKS TO BE LOCATED AT 1/4 SPAN LENGTH FOR GLASS WIDER THAN 36" AS PER FBC CHAPTER 24.
4. D.L.O. AND DESIGN PRESSURES MAY NOT EXCEED MAX VALUES SHOWN HEREIN.
5. WINDOW WAS TESTED WITHOUT THE USE OF A GLAZING BEAD. GLAZING BEAD IS OPTIONAL AND NOT REQUIRED. SPACER MATERIAL MAY VARY AS WELL. SACRIFICIAL GLASS LITE HEAT TREATMENT MAY VARY AS WELL.



PORTELLA STEEL WINDOWS & DOORS
4111 TODD LANE, SUITE 1000
AUSTIN, TEXAS 78744
PH: (214)484-3134 FAX: (214)484-3357

TITLE: ARTISAN SERIES FIXED WINDOW
(HVBZ)(IMPACT)

GLAZING DETAILS
& OPTIONAL GLAZING BEADS

PREPARED BY: BUILDING DROPS, INC.
1900 NE MIAMI CT, SUITE 2-15
MIAMI, FL 33132

PH: (954)399-8478
FAX: (954)744-4738
WEB: www.buildingdrops.com



REMARKS	BY	DATE

THIS DOCUMENT IS THE PROPERTY OF BUILDING DROPS, INC. AND SHALL NOT BE REPRODUCED IN WHOLE OR PART WITHOUT WRITTEN CONSENT OF BUILDING DROPS, INC. ALTERATIONS, ADDITIONS, HIGHLIGHTING, OR OTHER MARKINGS TO THIS DOCUMENT ARE NOT PERMITTED AND INVALIDATE OUR CERTIFICATION.



FL #:

FL47935

DATE: **11.20.2025**

DWG. BY:
HJ

CHK. BY:
HFN

SCALE: **NTS**

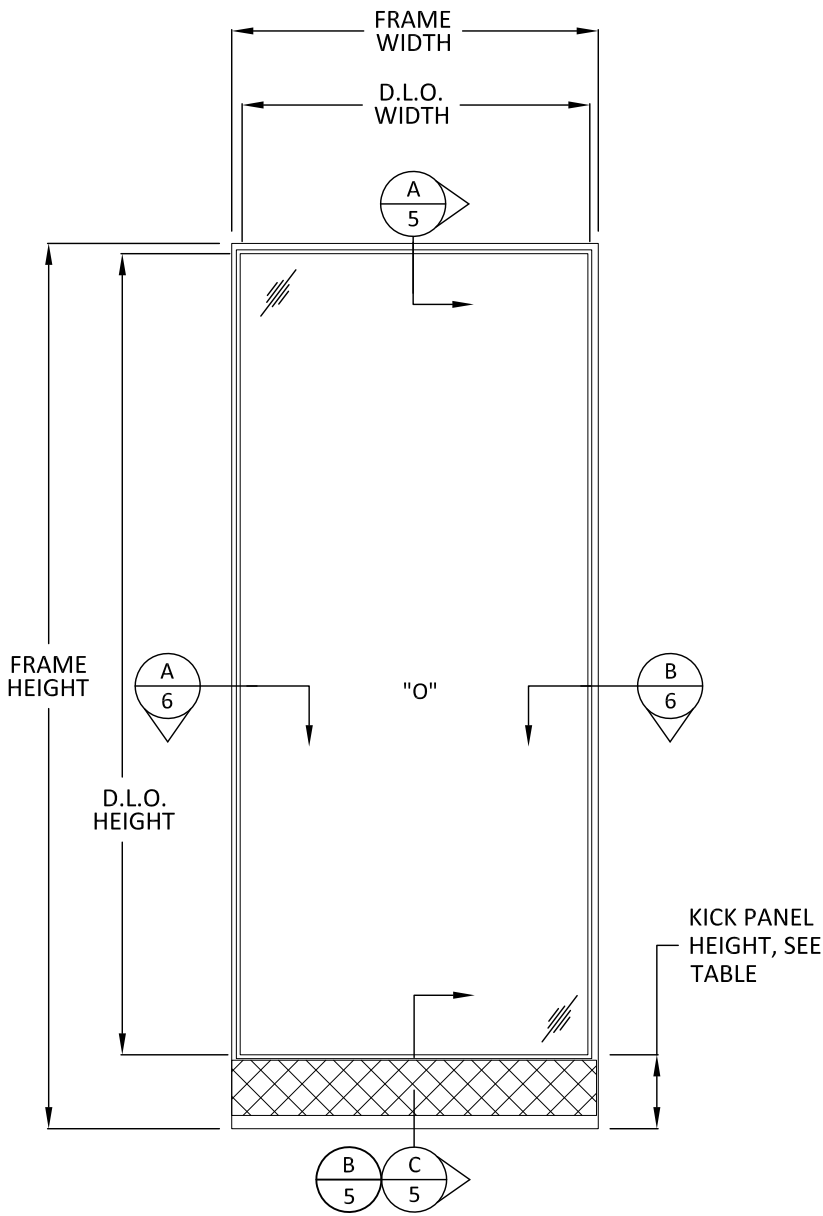
DWG. #: **POR008**

SHEET:

2

OF 10

c:\users\dylanwata\building drops, inc\building drops landing - common\projects\portella steel doors & windows\fbcc-22-0441.1 - fbc submittal - fx, cs, esd, mullionstiffener(dwgs)\fixed\por008-hvhz.dwg 12/10/2025 1:29 PM



TYPICAL ELEVATION

FIXED WINDOW

SIZE NOTES:

D.L.O. HEIGHT = FRAME HEIGHT - 3-7/16"

D.L.O. WIDTH = FRAME WIDTH - 3-7/16"

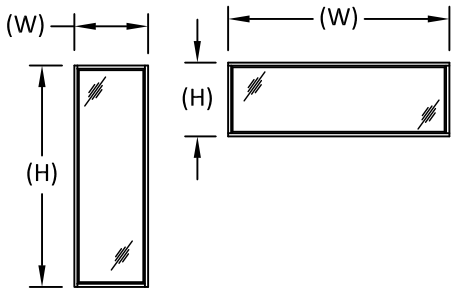
NOTE: KICK PANEL IS OPTIONAL.
FULL LITE QUALIFIED.

DESIGN PRESSURE TABLE (PSF)			
NOMINAL DIMS.		POS. (+)	NEG. (-)
FRAME WIDTH (IN.)	FRAME HEIGHT (IN.)		
42	72	60.0	65.0
48		60.0	65.0
54		60.0	65.0
60		60.0	65.0
66		55.0	59.0
72	78	50.0	54.0
42		60.0	65.0
48		60.0	65.0
54		60.0	65.0
60		60.0	65.0
66	84	55.0	59.0
72		50.0	54.0
78		46.0	50.0
84		43.0	46.0
90		40.0	43.0
42	90	60.0	65.0
48		60.0	65.0
54		60.0	65.0
60		60.0	65.0
66		55.0	59.0
72	96	50.0	54.0
78		46.0	50.0
84		43.0	46.0
90		40.0	43.0
96		37.0	40.0
42	102	60.0	65.0
48		60.0	65.0
54		60.0	65.0
60		60.0	65.0
66		55.0	59.0
72	108	50.0	54.0
78		46.0	50.0
84		43.0	46.0
90		40.0	43.0
96		37.0	40.0

DESIGN PRESSURE TABLE (PSF)			
NOMINAL DIMS.		POS. (+)	NEG. (-)
FRAME WIDTH (IN.)	FRAME HEIGHT (IN.)		
42	114	60.0	65.0
48		60.0	65.0
54		60.0	65.0
60		60.0	65.0
66		55.0	59.0
72	120	50.0	54.0
42		60.0	65.0
48		60.0	65.0
54		60.0	65.0
60		60.0	65.0
66	126	55.0	59.0
72		50.0	54.0
78		46.0	50.0
84		43.0	46.0
90		40.0	43.0
42	132	60.0	65.0
48		60.0	65.0
54		60.0	65.0
60		60.0	65.0
66		55.0	59.0
72	138	50.0	54.0
78		46.0	50.0
84		43.0	46.0
90		40.0	43.0
96		37.0	40.0
42	144	60.0	65.0
48		60.0	65.0
54		60.0	65.0
60		60.0	65.0
66		55.0	59.0
72	150	50.0	54.0
78		46.0	50.0
84		43.0	46.0
90		40.0	43.0
96		37.0	40.0
42	156	60.0	65.0
48		60.0	65.0
54		60.0	65.0
60		60.0	65.0
66		55.0	59.0
72	162	50.0	54.0
78		46.0	50.0
84		43.0	46.0
90		40.0	43.0
96		37.0	40.0
42	168	60.0	65.0
48		60.0	65.0
54		60.0	65.0
60		60.0	65.0
66		55.0	59.0
72	174	50.0	54.0
78		46.0	50.0
84		43.0	46.0
90		40.0	43.0
96		37.0	40.0
42	180	60.0	65.0
48		60.0	65.0
54		60.0	65.0
60		60.0	65.0
66		55.0	59.0

KICK PANEL DESIGN PRESSURE TABLE (PSF)			
NOMINAL DIM.		POS. (+)	NEG. (-)
PANEL HEIGHT (IN.)	PANEL WIDTH (IN.)		
12	60	60.00	65.00
12	54	60.00	65.00
14	48	60.00	65.00
16	42	60.00	65.00

NOTE:
WINDOW WIDTH (W) AND HEIGHT (H) ARE INTERCHANGEABLE FOR ALL SIZES SHOWN HEREIN NOT TO EXCEED MAXIMUM TESTED SQUARE FOOT AREA. ANCHOR SPACING SHALL NOT EXCEED THOSE SHOWN FOR LONG OR SHORT LEG OF UNIT, SEE TABLE ABOVE.



PORTELLA STEEL WINDOWS & DOORS
4111 TODD LANE, SUITE 1000
AUSTIN, TEXAS 78744
PH: (214)484-3134 FAX: (214)484-3357

TITLE: ARTISAN SERIES FIXED WINDOW
(HVVHZ)/(IMPACT)

ELEVATION
& DESIGN PRESSURE TABLE

PREPARED BY:

BUILDING DROPS, INC.

1900 NE MIAMI CT, SUITE 2-15

MIAMI, FL 33132

PH: (954)399-8478

FAX: (954)744-4738

WEB: www.buildingdrops.com



REMARKS	BY	DATE

THIS DOCUMENT IS THE PROPERTY OF BUILDING DROPS, INC. AND SHALL NOT BE REPRODUCED IN WHOLE OR PART WITHOUT WRITTEN CONSENT OF BUILDING DROPS, INC. ALTERATIONS, ADDITIONS, HIGHLIGHTING, OR OTHER MARKINGS TO THIS DOCUMENT ARE NOT PERMITTED AND INVALIDATE OUR CERTIFICATION.



FL #:

FL47935

DATE: 11.20.2025

DWG. BY:
HJ

CHK. BY:
HFN

SCALE: NTS

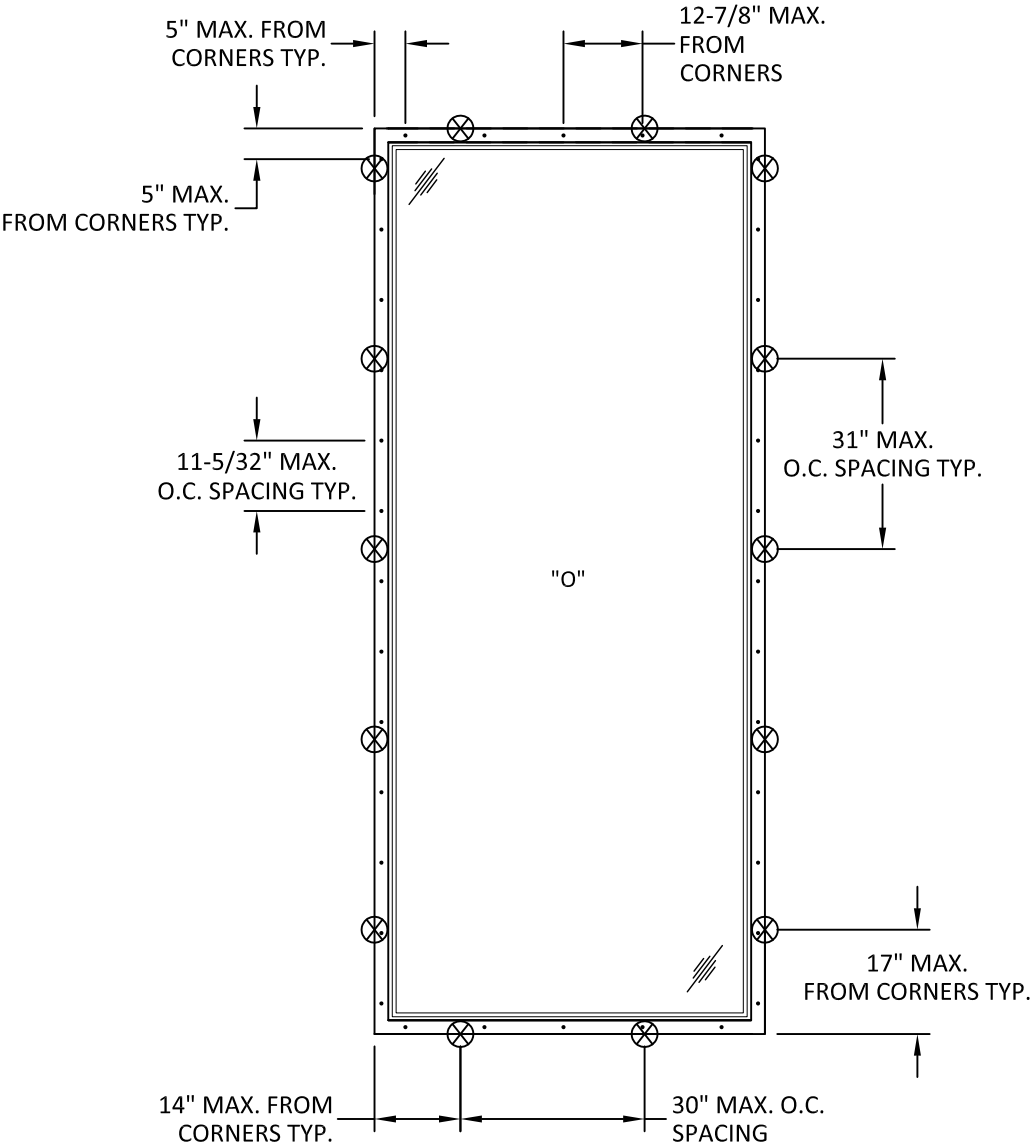
DWG. #: POR008

SHEET:

3

OF 10

c:\users\dylanwata\building drops, inc\building drops landing - common\projects\portella steel doors & windows\fbce22-0441.1 - fbc submittal - fx, cs, esd, mullionstiffener(dwgs)\fixed\por008- hvhz.dwg 12/10/2025 1:29 PM



ANCHOR LAYOUT

ANCHOR LEGEND	
⊗	= CLIP INSTALLATION
•	= NAIL FIN INSTALLATION - SEE DETAILS

NOTE: SEE SHEETS 7, 8 & 9 FOR ANCHOR DETAILS AND INSTALLATION OPTIONS.

CLIP INSTALLATION - SEE DETAILS : F|8, H|9, I|9, J|9
NAIL FIN INSTALLATION - SEE DETAILS : A|7, B|7, C|7, D|8, E|8, G|8




PORTELLA STEEL WINDOWS & DOORS
4111 TODD LANE, SUITE 1000
AUSTIN, TEXAS 78744
PH: (214)484-3134 FAX: (214)484-3357

TITLE:
ARTISAN SERIES FIXED WINDOW
(HVHZ)(IMPACT)

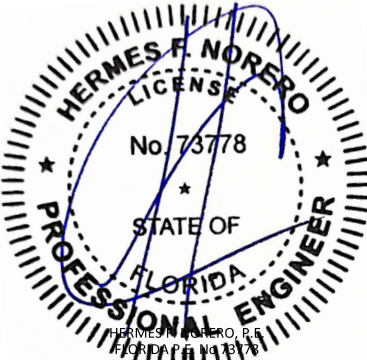
ANCHOR LAYOUTS

PREPARED BY:
BUILDING DROPS, INC.
1900 NE MIAMI CT, SUITE 2-15
MIAMI, FL 33132
PH: (954)399-8478
FAX: (954)744-4738
WEB: www.buildingdrops.com


BUILDING DROPS

REMARKS	BY	DATE

THIS DOCUMENT IS THE PROPERTY OF BUILDING DROPS, INC. AND SHALL NOT BE REPRODUCED IN WHOLE OR PART WITHOUT WRITTEN CONSENT OF BUILDING DROPS, INC. ALTERATIONS, ADDITIONS, HIGHLIGHTING, OR OTHER MARKINGS TO THIS DOCUMENT ARE NOT PERMITTED AND INVALIDATE OUR CERTIFICATION.


HERMES F. NORERO, P.E.
FLORIDA PROFESSIONAL ENGINEER
1900 NE MIAMI CT, SUITE 2-15
MIAMI, FL 33132
FBPE CERT. OF AUTHORIZATION No. 29578

FL #:
FL47935

DATE: **11.20.2025**

DWG. BY: HJ	CHK. BY: HFN
-----------------------	------------------------

SCALE: **NTS**

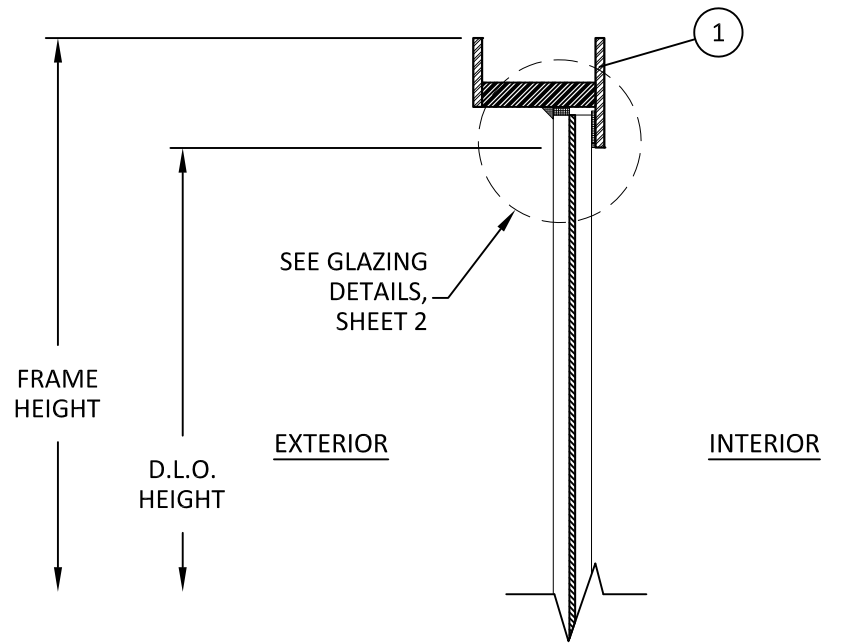
DWG. #: **POR008**

SHEET:

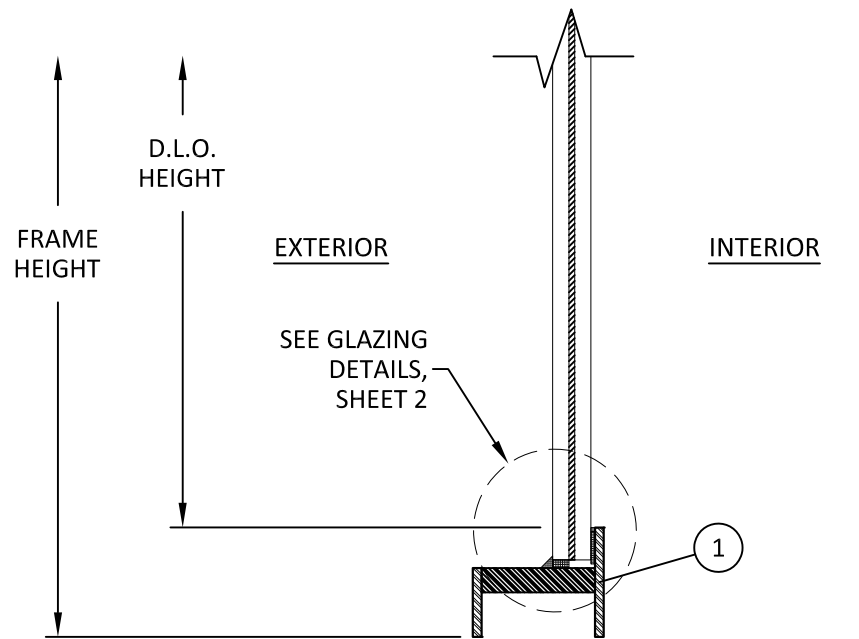
4

OF 10

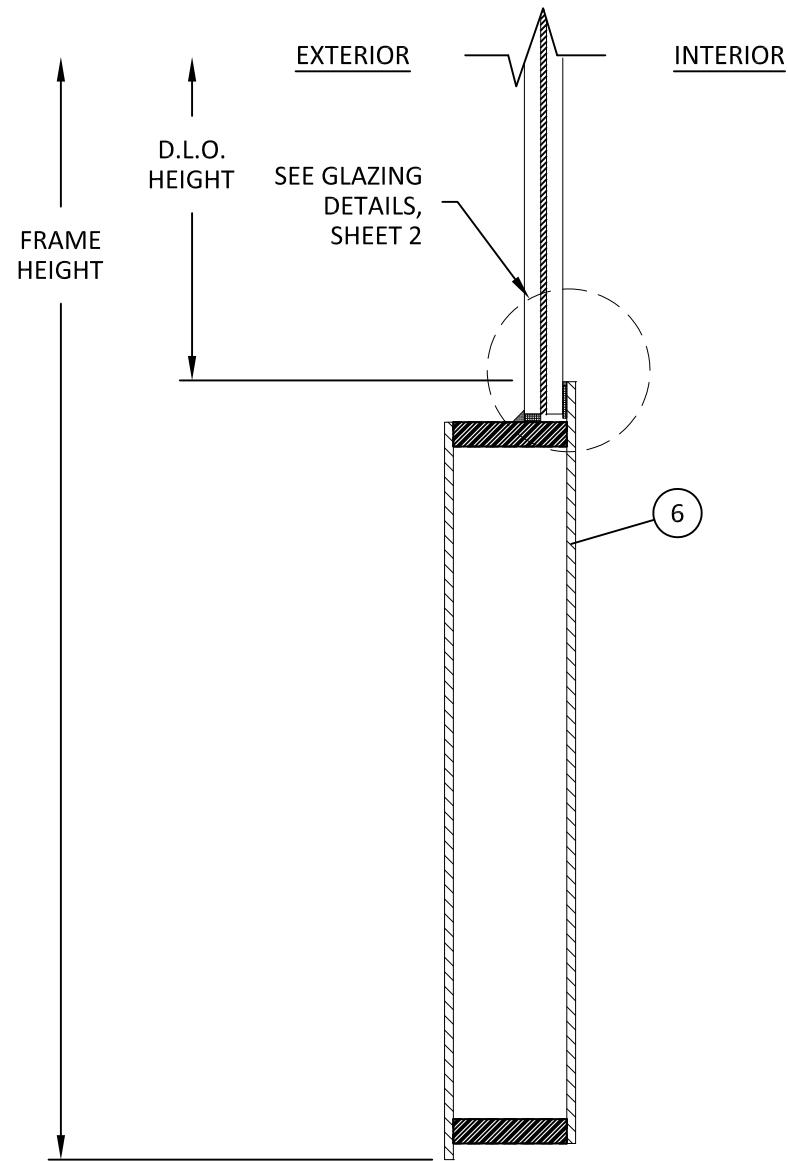
c:\users\dylanwata\building drops, inc\building drops landing - common\projects\portella steel doors & windows\fbcr22-0441.1 - fbc submittal - fx, cs, esd, mullionstiffener(dwgs)\fixed\por008- hvhz.dwg 12/10/2025 1:29 PM



A
5 VERTICAL SECTION
HEAD



B
5 VERTICAL SECTION
SILL



C
5 VERTICAL SECTION
ALTERNATE SILL - KICK PANEL



PORTELLA STEEL WINDOWS & DOORS
4111 TODD LANE, SUITE 1000
AUSTIN, TEXAS 78744
PH: (214)484-3134 FAX: (214)484-3357

TITLE: ARTISAN SERIES FIXED WINDOW
(HVHZ)(IMPACT)

VERTICAL SECTIONS

PREPARED BY: BUILDING DROPS, INC.

1900 NE MIAMI CT, SUITE 2-15
MIAMI, FL 33132
PH: (954)399-8478
FAX: (954)744-4738
WEB: www.buildingdrops.com



REMARKS	BY	DATE

THIS DOCUMENT IS THE PROPERTY OF BUILDING DROPS, INC. AND SHALL NOT BE REPRODUCED IN WHOLE OR PART WITHOUT WRITTEN CONSENT OF BUILDING DROPS, INC. ALTERATIONS, ADDITIONS, HIGHLIGHTING, OR OTHER MARKINGS TO THIS DOCUMENT ARE NOT PERMITTED AND INVALIDATE OUR CERTIFICATION.



FL #: **FL47935**

DATE: **11.20.2025**

DWG. BY: **HJ** CHK. BY: **HFN**

SCALE: **NTS**

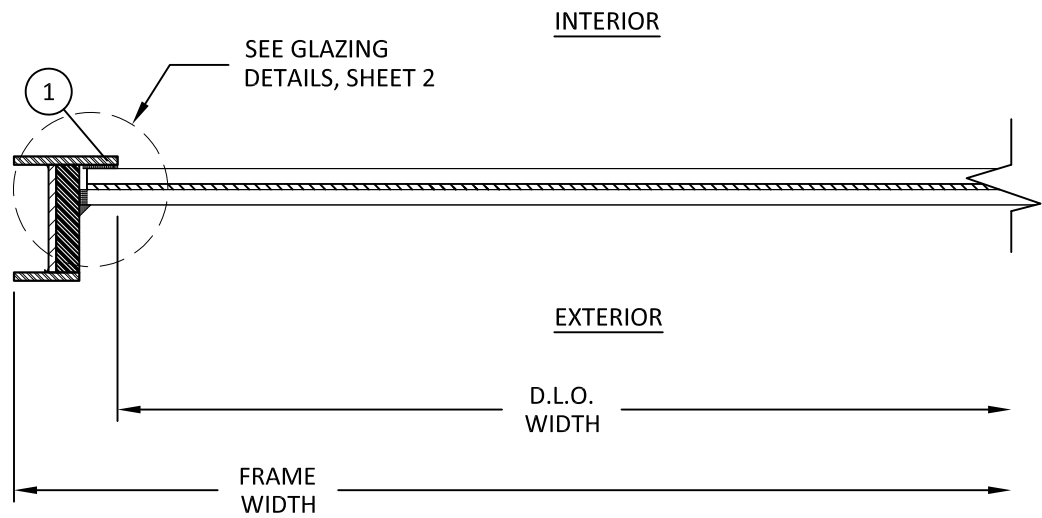
DWG. #: **POR008**

SHEET:

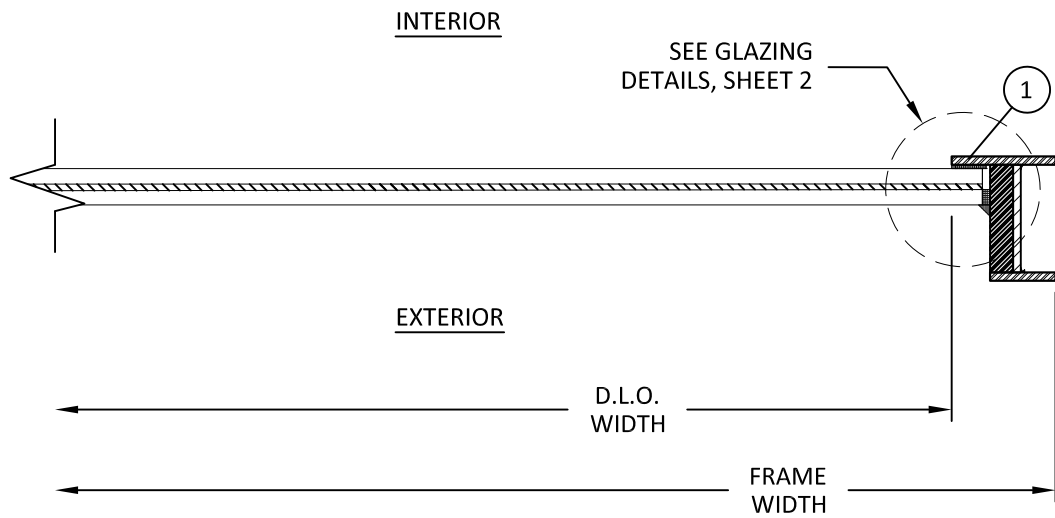
5

OF 10

c:\users\dylanwata\building drops, inc\building drops landing - common\projects\portella steel doors & windows\fb-c-22-0441.1 - fb-c submittal - fx, cs, esd, mullionstiffener(dwgs)\fixed\por008- hvhz.dwg 12/10/2025 1:29 PM



A
6 **HORIZONTAL SECTION**
LEFT JAMB



B
6 **HORIZONTAL SECTION**
RIGHT JAMB




PORTELLA STEEL WINDOWS & DOORS
4111 TODD LANE, SUITE 1000
AUSTIN, TEXAS 78744
PH: (214)484-3134 FAX: (214)484-3357

TITLE:
ARTISAN SERIES FIXED WINDOW
(HVHZ)/(IMPACT)

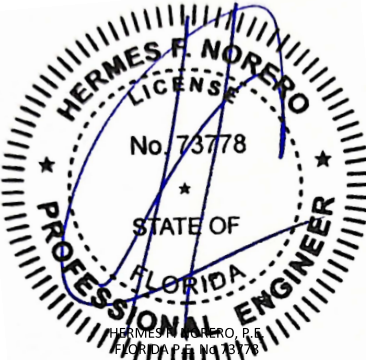
HORIZONTAL SECTIONS

PREPARED BY:
BUILDING DROPS, INC.
1900 NE MIAMI CT, SUITE 2-15
MIAMI, FL 33132
PH: (954)399-8478
FAX: (954)744-4738
WEB: www.buildingdrops.com


BUILDING DROPS

REMARKS	BY	DATE

THIS DOCUMENT IS THE PROPERTY OF BUILDING DROPS, INC. AND SHALL NOT BE REPRODUCED IN WHOLE OR PART WITHOUT WRITTEN CONSENT OF BUILDING DROPS, INC. ALTERATIONS, ADDITIONS, HIGHLIGHTING, OR OTHER MARKINGS TO THIS DOCUMENT ARE NOT PERMITTED AND INVALIDATE OUR CERTIFICATION.



HERMES F. NORERO, P.E.
FLORIDA PROFESSIONAL ENGINEER
1900 NE MIAMI CT, SUITE 2-15
MIAMI, FL 33132
FBPE CERT. OF AUTHORIZATION No. 29578

FL #:
FL47935

DATE: **11.20.2025**

DWG. BY:
HJ

CHK. BY:
HFN

SCALE: **NTS**

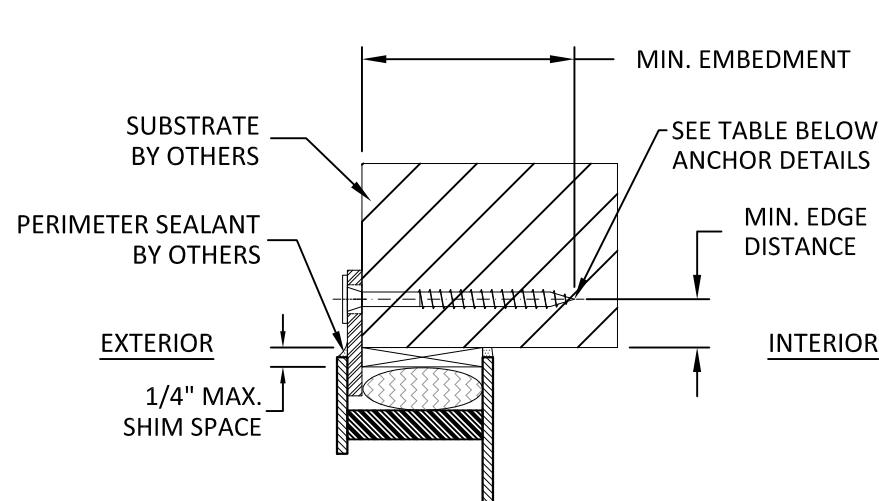
DWG. #: **POR008**

SHEET:

6

OF 10

c:\users\dylanwata\building drops, inc\building drops landing - common\projects\portella steel doors & windows\fbce-22-0441.1 - fbce submittal - fx, cs, esd, mullionstiffener\dwgs\fixed\por008-hvhz.dwg 12/10/2025 1:29 PM

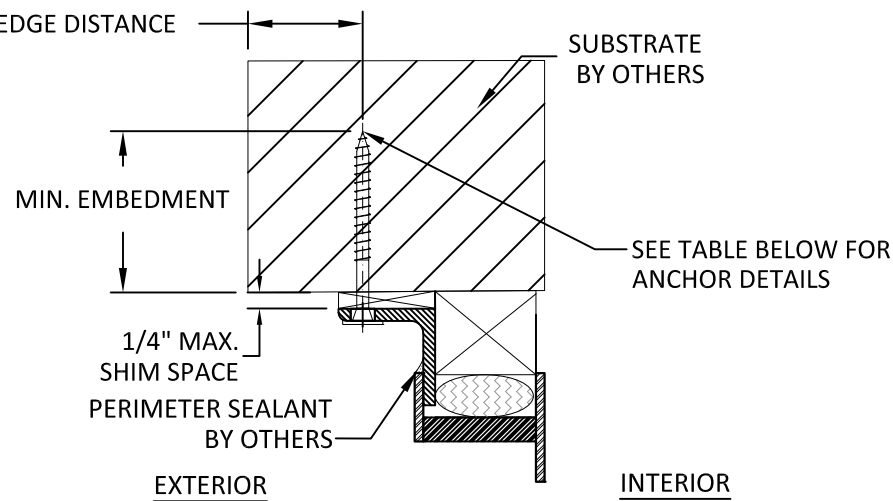


A
7

VERTICAL SECTION

HEAD - EXTERIOR NAIL FIN

NOTE: SILL & JAMB SIMILAR

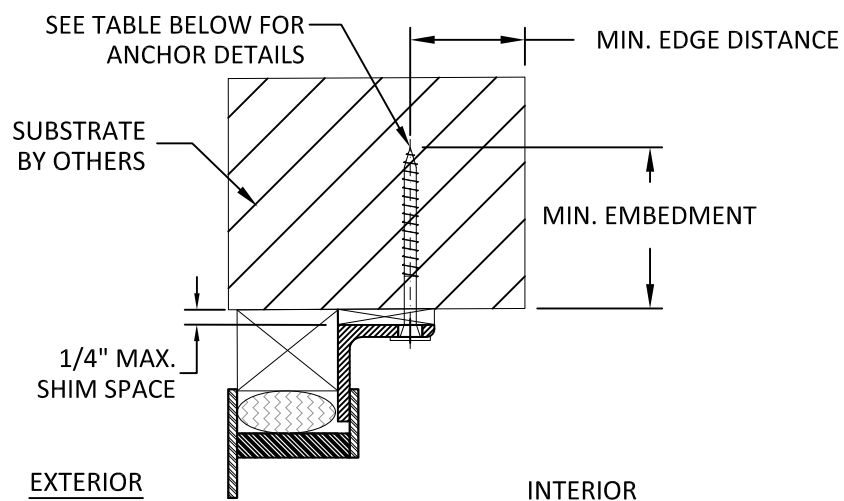


B
7

VERTICAL SECTION

HEAD - EXTERIOR ANGLE

NOTE: SILL & JAMB SIMILAR



C
7

VERTICAL SECTION

HEAD - INTERIOR ANGLE

NOTE: SILL & JAMB SIMILAR

INSTALLATION NOTES:

- ONE INSTALLATION ANCHOR IS REQUIRED AT EACH ANCHOR LOCATION SHOWN, UNLESS OTHERWISE STATED ON SHEETS 4, 7, 8 & 9.
- INSTALL INDIVIDUAL INSTALLATION ANCHORS WITHIN A TOLERANCE OF $\pm 1/2$ " OF THE DEPICTED LOCATION IN THE ANCHOR LAYOUT DETAIL (I.E; WITHOUT CONSIDERATION OF TOLERANCES). TOLERANCES ARE NOT CUMULATIVE FROM ONE INSTALLATION ANCHOR TO THE NEXT.
- SHIM AS REQUIRED AT EACH INSTALLATION ANCHOR WITH LOAD BEARING SHIM(S). MAXIMUM ALLOWABLE SHIM STACK TO BE 1/4 INCH. SHIM WHERE SPACE OF 1/16 INCH OR GREATER OCCURS. SHIM(S) SHALL BE CONSTRUCTED OF HIGH DENSITY PLASTIC OR BETTER.
- MINIMUM EMBEDMENT AND EDGE DISTANCE EXCLUDE WALL FINISHES, INCLUDING BUT NOT LIMITED TO STUCCO, FOAM, BRICK VENEER, AND SIDING.
- INSTALLATION ANCHORS AND ASSOCIATED HARDWARE MUST BE MADE OF CORROSION RESISTANT MATERIAL OR HAVE A CORROSION RESISTANT COATING.
- FOR MASONRY OR CONCRETE OPENINGS, A 1X WOOD BUCK MAY BE USED (OPTIONAL) AS LONG AS THE MINIMUM EMBEDMENT AND EDGE DISTANCE REQUIREMENTS ARE STILL MET WITHIN THE CORRESPONDING HOST SUBSTRATE. SEE GENERAL NOTE #3 ON SHEET 1 FOR MORE INFORMATION.
- FOR HOLLOW BLOCK AND GROUT FILLED BLOCK, DO NOT INSTALL INSTALLATION ANCHORS INTO MORTAR JOINTS. EDGE DISTANCE IS MEASURED FROM FREE EDGE OF BLOCK OR EDGE OF MORTAR JOINT INTO FACE SHELL OF BLOCK.
- INSTALLATION ANCHORS SHALL BE INSTALLED IN ACCORDANCE WITH ANCHOR MANUFACTURER'S INSTALLATION INSTRUCTIONS, AND ANCHORS SHALL NOT BE USED IN SUBSTRATES WITH STRENGTHS LESS THAN THE MINIMUM STRENGTH SPECIFIED BY THE ANCHOR MANUFACTURER
- INSTALLATION SHALL FOLLOW MANUFACTURERS RECOMMENDATIONS FOR SEALING FIXED WINDOWS AND ACCESSORY ITEMS.

ANCHOR SCHEDULE					
METHOD	SUBSTRATE	ANCHOR TYPE	MIN. EMBEDMENT	MIN. EDGE DISTANCE	MIN. SPACING
INTERIOR/EXTERIOR NAIL FIN, INTERIOR/EXTERIOR ANGLE, INTERIOR FLANGE, FLANGE TAB, FLANGE TAB CLIP INTERIOR/EXTERIOR ANGLE FLANGE CLIP, INTERIOR FLANGE CLIP, INTERIOR NAIL FIN CLIP INSTALLATION	WOOD: MIN. SG = 0.55	5/16" LAG SCREW	1.50"	0.75"	0.75"
	METAL: 18 GAUGE STEEL, MIN. Fy = 33KSI ALUMINUM: 1/8" MIN., 6063-T5	5/16" GR. 5 SELF-TAPPING/ DRILLING SCREW	3 THREADS MIN PENETRATION BEYOND STRUCTURE	0.50"	0.50"
	CONCRETE: f'c=3000PSI	3/8" LDT ITW TAPCON	1.50"	1.75"	3.00"
	MASONRY: CMU per ASTM C90 MIN. 2000 PSI	3/8" LDT ITW TAPCON			
FLANGE TAB INSTALLATION	WOOD: MIN. SG = 0.55	#12 WOOD SCREW	1.50"	0.75"	0.75"
	METAL: 18 GAUGE STEEL, MIN. Fy = 33KSI ALUMINUM: 1/8" MIN., 6063-T5	#12 GR. 5 SELF-TAPPING/ DRILLING SCREW	3 THREADS MIN PENETRATION BEYOND STRUCTURE	0.50"	0.50"
	CONCRETE: f'c=3000PSI	1/4" ITW TAPCON	1.00"	2.00"	2.00"
	MASONRY: CMU per ASTM C90 MIN. 2000 PSI	1/4" ITW TAPCON			



PORTELLA STEEL WINDOWS & DOORS
4111 TODD LANE, SUITE 1000
AUSTIN, TEXAS 78744
PH: (214)484-3134 FAX: (214)484-3357

TITLE: ARTISAN SERIES FIXED WINDOW (HVBHZ)/(IMPACT)

ANCHOR DETAILS & INSTALLATION NOTES

PREPARED BY:

BUILDING DROPS, INC.

1900 NE MIAMI CT, SUITE 2-15

MIAMI, FL 33132

PH: (954)399-8478

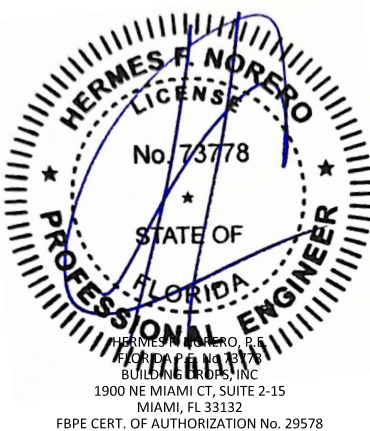
FAX: (954)744-4738

WEB: www.buildingdrops.com



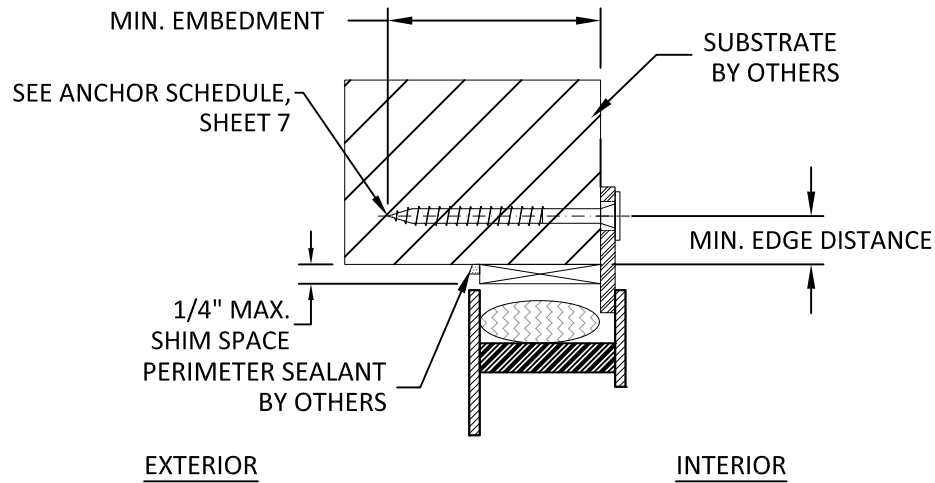
REMARKS	BY	DATE

THIS DOCUMENT IS THE PROPERTY OF BUILDING DROPS, INC. AND SHALL NOT BE REPRODUCED IN WHOLE OR PART WITHOUT WRITTEN CONSENT OF BUILDING DROPS, INC. ALTERATIONS, ADDITIONS, HIGHLIGHTING, OR OTHER MARKINGS TO THIS DOCUMENT ARE NOT PERMITTED AND INVALIDATE OUR CERTIFICATION.

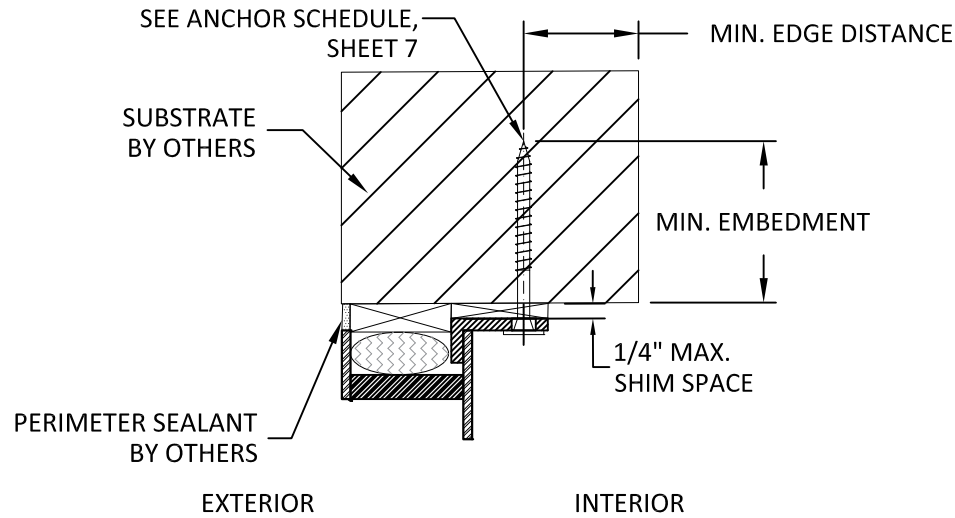


FL #:	FL47935
DATE:	11.20.2025
DWG. BY:	CHK. BY:
HJ	HFN
SCALE:	NTS
DWG. #:	POR008
SHEET:	7

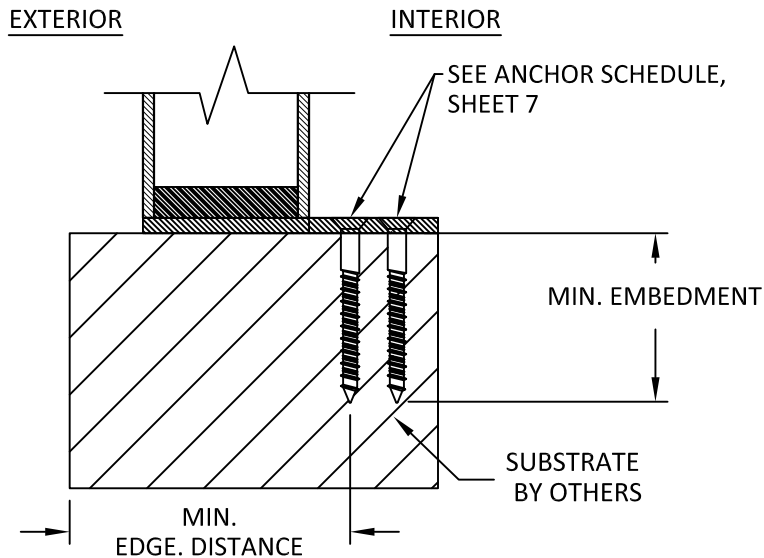
c:\users\dylanwata\building drops, inc\building drops landing - common\projects\portella steel doors & windows\fbz-22-0441.1 - fbc submittal - fx, cs, esd, mullionstiffener(dwgs)\fixed\por008-hvhz.dwg 12/10/2025 1:29 PM



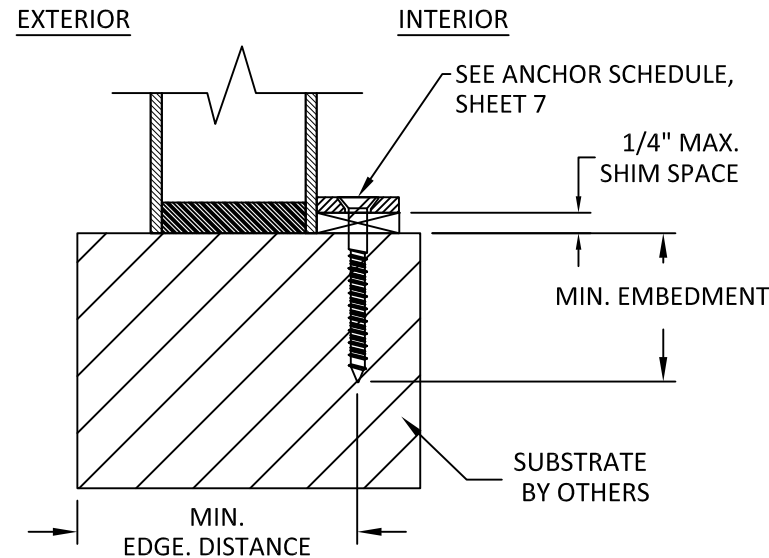
D
8 **VERTICAL SECTION**
HEAD - INTERIOR NAIL FIN
NOTE: SILL & JAMB SIMILAR



E
8 **VERTICAL SECTION**
HEAD - INTERIOR FLANGE
NOTE: SILL & JAMB SIMILAR



F
8 **VERTICAL SECTION**
SILL - FLANGE TAB CLIP
NOTE: 2 ANCHORS REQUIRED



G
8 **VERTICAL SECTION**
SILL - FLANGE TAB



PORTELLA STEEL WINDOWS & DOORS
4111 TODD LANE, SUITE 1000
AUSTIN, TEXAS 78744
PH: (214)484-3134 FAX: (214)484-3357

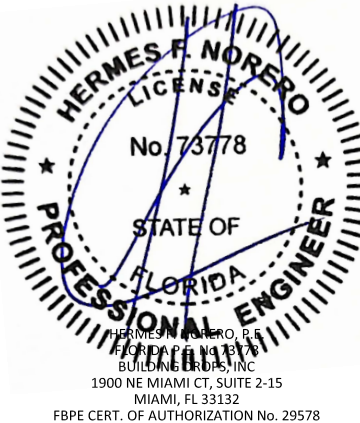
TITLE: ARTISAN SERIES FIXED WINDOW (HVHZ)/(IMPACT)
ANCHOR DETAILS

PREPARED BY: BUILDING DROPS, INC.
1900 NE MIAMI CT, SUITE 2-15
MIAMI, FL 33132
PH: (954)399-8478
FAX: (954)744-4738
WEB: www.buildingdrops.com

BUILDING DROPS

REMARKS	BY	DATE

THIS DOCUMENT IS THE PROPERTY OF BUILDING DROPS, INC. AND SHALL NOT BE REPRODUCED IN WHOLE OR PART WITHOUT WRITTEN CONSENT OF BUILDING DROPS, INC. ALTERATIONS, ADDITIONS, HIGHLIGHTING, OR OTHER MARKINGS TO THIS DOCUMENT ARE NOT PERMITTED AND INVALIDATE OUR CERTIFICATION.



FL #: **FL47935**

DATE: **11.20.2025**

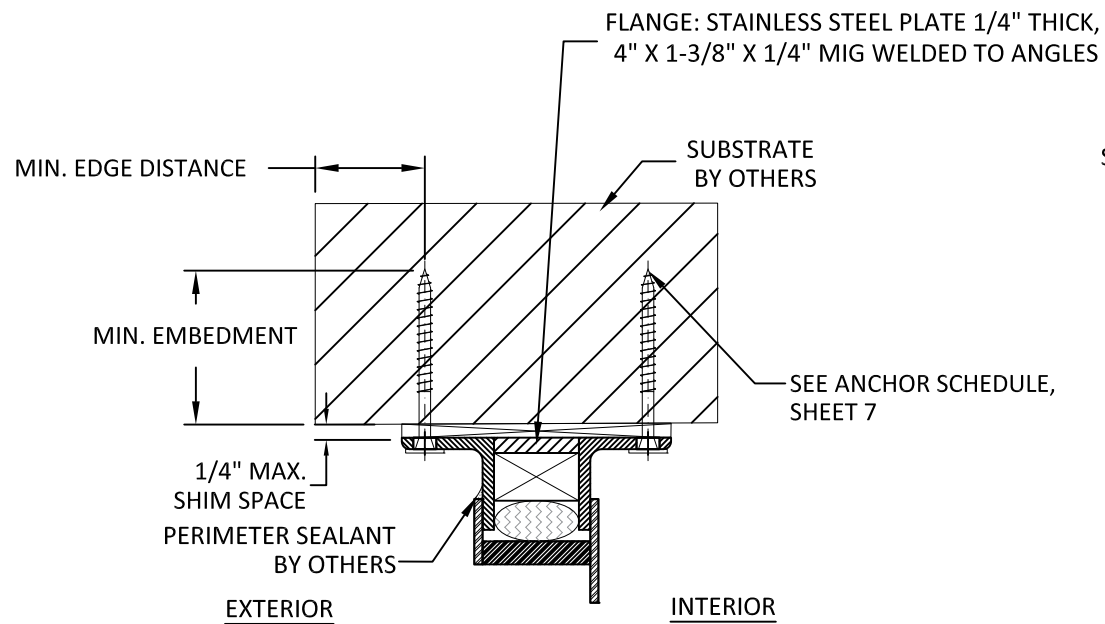
DWG. BY: HJ	CHK. BY: HFN
--------------------	---------------------

SCALE: **NTS**

DWG. #: **POR008**

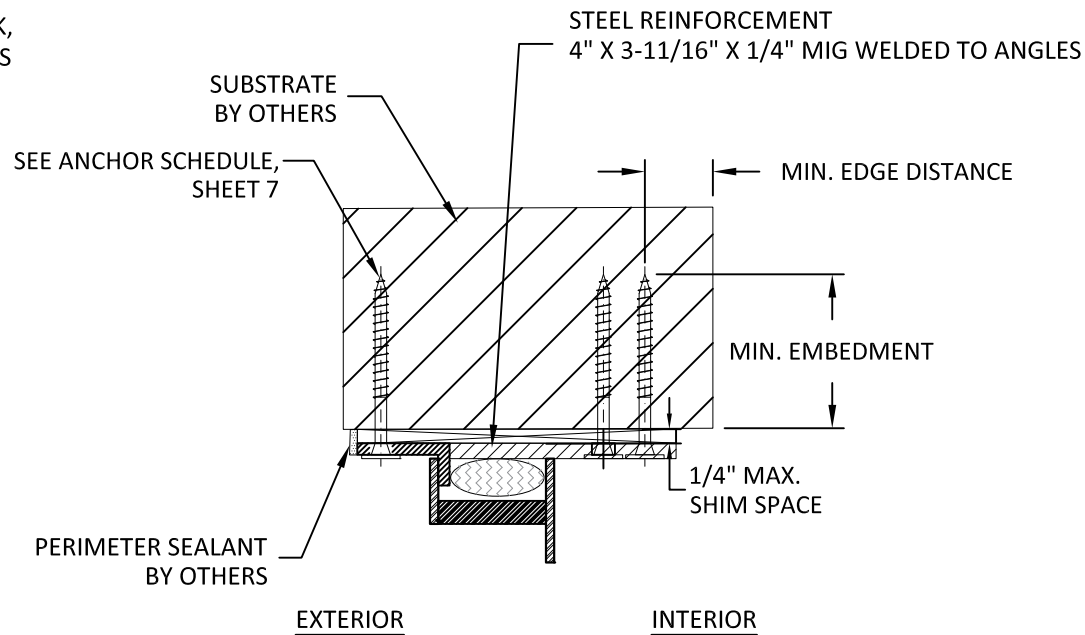
SHEET:

c:\users\dylanwata\building drops, inc\building drops landing - common\projects\portella steel doors & windows\fbce22-0441.1 - fbc submittal - fx, cs, esd, mullionstiffener(dwgs)\fixed\por008-hvhz.dwg
12/10/2025 1:29 PM



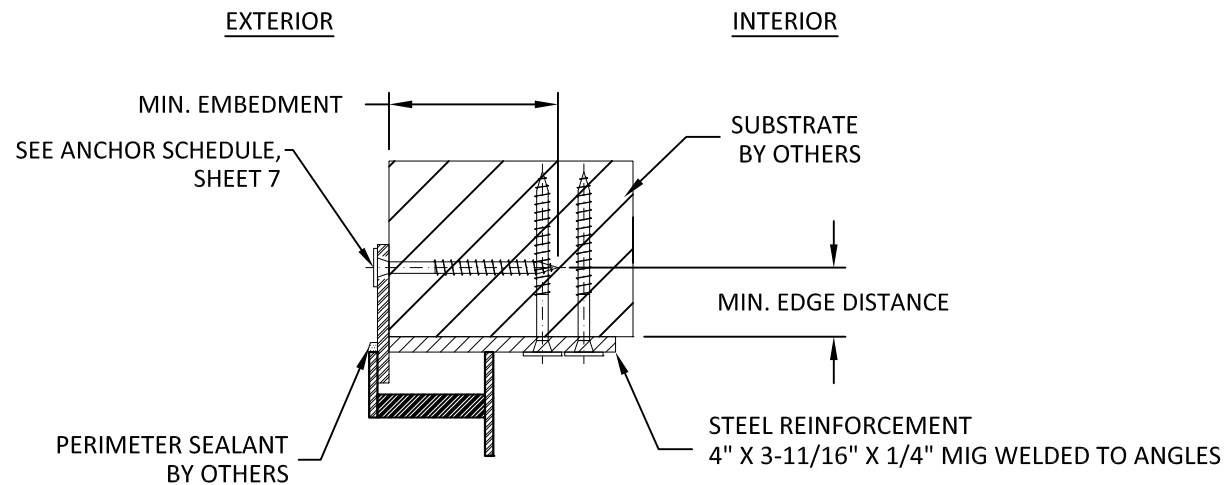
**H
9** VERTICAL SECTION
HEAD - EXTERIOR ANGLE FLANGE CLIP

NOTE: SILL & JAMB SIMILAR



**I
9** VERTICAL SECTION
HEAD - INTERIOR FLANGE CLIP

NOTE: SILL & JAMB SIMILAR



**J
9** VERTICAL SECTION
HEAD - INTERIOR NAIL FIN CLIP

NOTE: SILL & JAMB SIMILAR



PORTELLA STEEL WINDOWS & DOORS
4111 TODD LANE, SUITE 1000
AUSTIN, TEXAS 78744
PH: (214)484-3134 FAX: (214)484-3357

TITLE: ARTISAN SERIES FIXED WINDOW
(HVHZ)/(IMPACT)

ANCHOR DETAILS

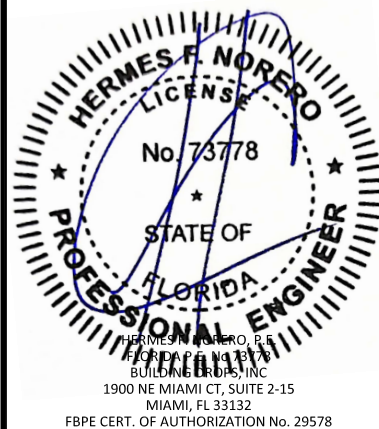
PREPARED BY: BUILDING DROPS, INC.

1900 NE MIAMI CT, SUITE 2-15
MIAMI, FL 33132
PH: (954)399-8478
FAX: (954)744-4738
WEB: www.buildingdrops.com



REMARKS	BY	DATE

THIS DOCUMENT IS THE PROPERTY OF BUILDING DROPS, INC. AND SHALL NOT BE REPRODUCED IN WHOLE OR PART WITHOUT WRITTEN CONSENT OF BUILDING DROPS, INC. ALTERATIONS, ADDITIONS, HIGHLIGHTING, OR OTHER MARKINGS TO THIS DOCUMENT ARE NOT PERMITTED AND INVALIDATE OUR CERTIFICATION.



FL #:

FL47935

DATE: **11.20.2025**

DWG. BY:
HJ

CHK. BY:
HFN

SCALE: **NTS**




DWG. #: **POR008**

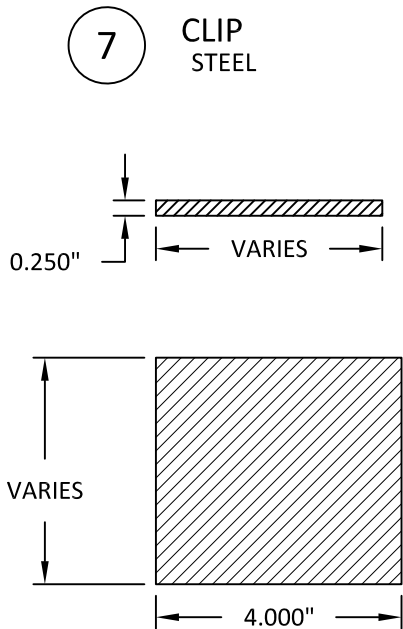
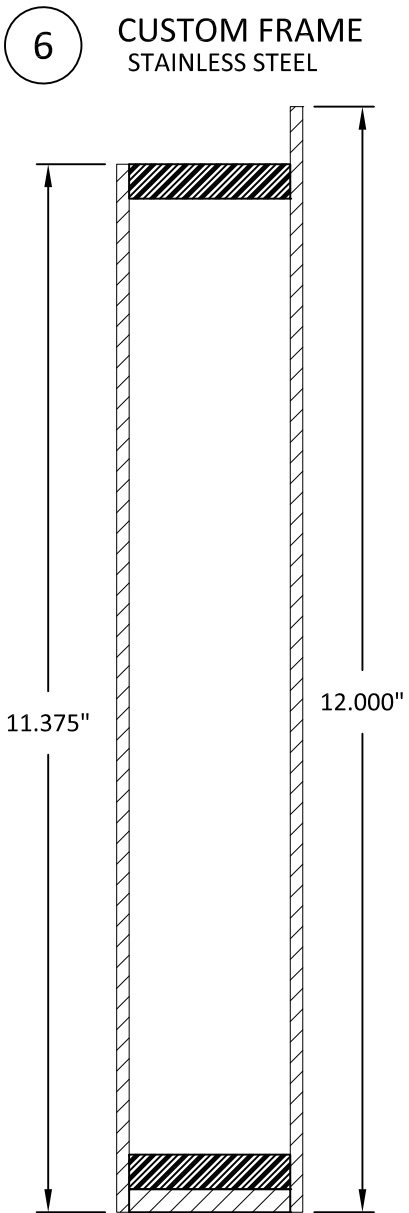
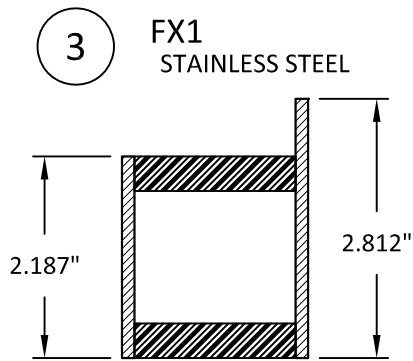
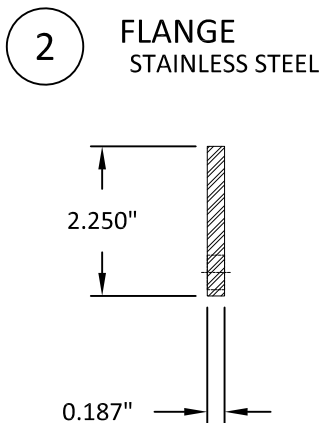
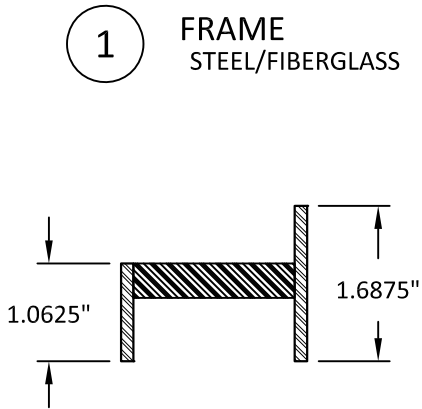
SHEET:

9

OF 10

BILL OF MATERIALS			
ITEM	PART NO.	DESCRIPTION	MATERIAL
1	04	FRAME	STEEL
2	-	FLANGE	STEEL
3	FX1	FRAME	STEEL
4	GASKET	GASKET	SILICONE w/3M
5	-	MULLED PIECE	STEEL
6	FX1 Custom	CUSTOM FRAME	STEEL
7	-	CLIP	STEEL

-  STEEL
-  STAINLESS STEEL GRADE 304
-  (FRP) FIBER RETARDANT POLYESTER



PORTELLA STEEL WINDOWS & DOORS
4111 TODD LANE, SUITE 1000
AUSTIN, TEXAS 78744
PH: (214)484-3134 FAX: (214)484-3357

TITLE: ARTISAN SERIES FIXED WINDOW
(HVHZ)(IMPACT)

BILL OF MATERIALS

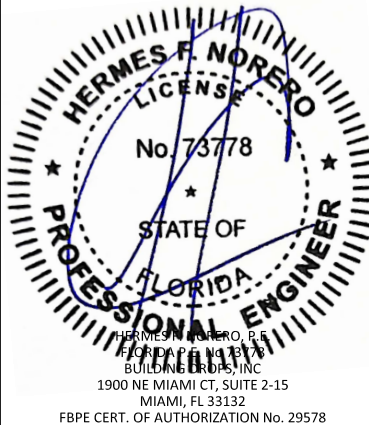
PREPARED BY: BUILDING DROPS, INC.

1900 NE MIAMI CT, SUITE 2-15
MIAMI, FL 33132
PH: (954)399-8478
FAX: (954)744-4738
WEB: www.buildingdrops.com



REMARKS	BY	DATE

THIS DOCUMENT IS THE PROPERTY OF BUILDING DROPS, INC. AND SHALL NOT BE REPRODUCED IN WHOLE OR PART WITHOUT WRITTEN CONSENT OF BUILDING DROPS, INC. ALTERATIONS, ADDITIONS, HIGHLIGHTING, OR OTHER MARKINGS TO THIS DOCUMENT ARE NOT PERMITTED AND INVALIDATE OUR CERTIFICATION.



FL #: FL47935

DATE: 11.20.2025

DWG. BY: HJ

CHK. BY: HFN

SCALE: NTS

DWG. #: POR008

SHEET:

10

OF 10