

# PORTELLA STEEL DOORS AND WINDOWS

## ARTISAN SERIES CASEMENT WINDOW

### (HVHZ)(IMPACT)

GENERAL NOTES:

- THE PRODUCT SHOWN HEREIN IS DESIGNED AND MANUFACTURED TO COMPLY WITH THE CURRENT EDITION FLORIDA BUILDING CODE (FBC), **INCLUDING** HVHZ AND HAS BEEN EVALUATED ACCORDING TO THE FOLLOWING:
  - TAS 201-94
  - TAS 202-94
  - TAS 203-94
  - AAMA/WDMA/CSA 101/I.S.2/A440-17
  - ASTM E1886-19
  - ASTM E1996-20
- ADEQUACY OF THE EXISTING STRUCTURAL CONCRETE/MASONRY, 2X AND METAL STUD FRAMING AS A MAIN WIND FORCE RESISTING SYSTEM CAPABLE OF WITHSTANDING AND TRANSFERRING APPLIED PRODUCT LOADS TO THE FOUNDATION IS THE RESPONSIBILITY OF THE ENGINEER OR ARCHITECT OF RECORD FOR THE PROJECT OF INSTALLATION.
- 1X AND 2X BUCKS (WHEN USED) SHALL BE DESIGNED AND ANCHORED TO PROPERLY TRANSFER ALL LOADS TO THE STRUCTURE. BUCK DESIGN AND INSTALLATION IS THE RESPONSIBILITY OF THE ENGINEER OR ARCHITECT OF RECORD FOR THE PROJECT OF INSTALLATION.
- THE INSTALLATION DETAILS DESCRIBED HEREIN ARE GENERIC AND MAY NOT REFLECT ACTUAL CONDITIONS FOR A SPECIFIC SITE. IF SITE CONDITIONS CAUSE INSTALLATION TO DEVIATE FROM THE REQUIREMENTS DETAILED HEREIN, A LICENSED ENGINEER OR ARCHITECT SHALL PREPARE SITE SPECIFIC DOCUMENTS FOR USE WITH THIS DOCUMENT.
- APPROVED IMPACT PROTECTIVE SYSTEM **IS NOT REQUIRED** ON THIS PRODUCT IN AREAS REQUIRING IMPACT RESISTANCE.
- CASEMENT FRAME MATERIAL: STAINLESS STEEL 304/POLYESTER FIBERGLASS
- GLASS MEETS THE REQUIREMENTS OF ASTM E1300 GLASS CHARTS. SEE SHEET 2 FOR GLAZING DETAILS.
- ALL STRUCTURAL MATERIALS & DISSIMILAR METALS SHALL BE PROTECTED , TREATED, PAINTED, COATED, AND / OR ISOLATED AS REQUIRED IN THE APPLICABLE SECTIONS OF THE CURRENT FLORIDA BUILDING CODE AND REFERENCED DESIGN SPECIFICATIONS.

TABLE OF CONTENTS	
SHEET	SHEET DESCRIPTION
1	GENERAL NOTES
2	GLAZING DETAILS
3	ELEVATION & DESIGN PRESSURE TABLES
4	ELEVATION & DESIGN PRESSURE TABLES
5	ANCHOR LAYOUTS
6	VERTICAL SECTIONS
7	HORIZONTAL SECTIONS
8	INSTALLATION NOTES & ANCHOR DETAILS
9	ANCHOR DETAILS
10	BILL OF MATERIALS AND COMPONENTS

DESIGN PRESSURE RATING (PSF)				
CONFIGURATION	WIDTH (IN.)	HEIGHT (IN.)	DESIGN PRESSURE	MISSILE IMPACT RATING
SEE TABLES ON SHEETS 3 & 4				LARGE & SMALL MISSILE IMPACT



PORTELLA STEEL WINDOWS & DOORS  
2727 W MOCKINGBIRD LANE, SUITE 102  
DALLAS, TEXAS 75235  
PH: (214)484-3134 FAX: (214)484-3357

TITLE:  
ARTISAN SERIES  
CASEMENT WINDOWS  
(HVHZ)(IMPACT)

GENERAL NOTES

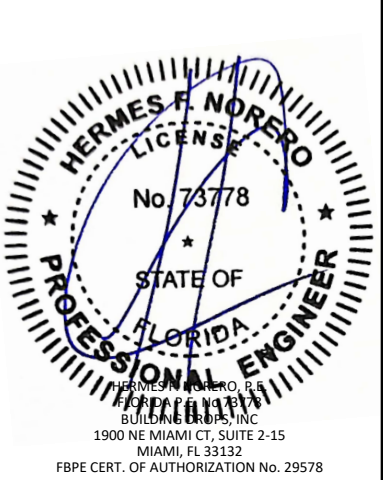
PREPARED BY:

BUILDING DROPS, INC.  
1900 NE MIAMI CT, SUITE 2-15  
MIAMI, FL 33132  
PH: (954)399-8478  
FAX: (954)744-4738  
WEB: www.buildingdrops.com



REMARKS	BY	DATE

THIS DOCUMENT IS THE PROPERTY OF BUILDING DROPS, INC. AND SHALL NOT BE REPRODUCED IN WHOLE OR PART WITHOUT WRITTEN CONSENT OF BUILDING DROPS, INC. ALTERATIONS, ADDITIONS, HIGHLIGHTING, OR OTHER MARKINGS TO THIS DOCUMENT ARE NOT PERMITTED AND INVALIDATE OUR CERTIFICATION.



FL #:  
**FL47738**

DATE: **07.23.24**

DWG. BY:  
**HJ**

CHK. BY:  
**HFN**

SCALE: **NTS**

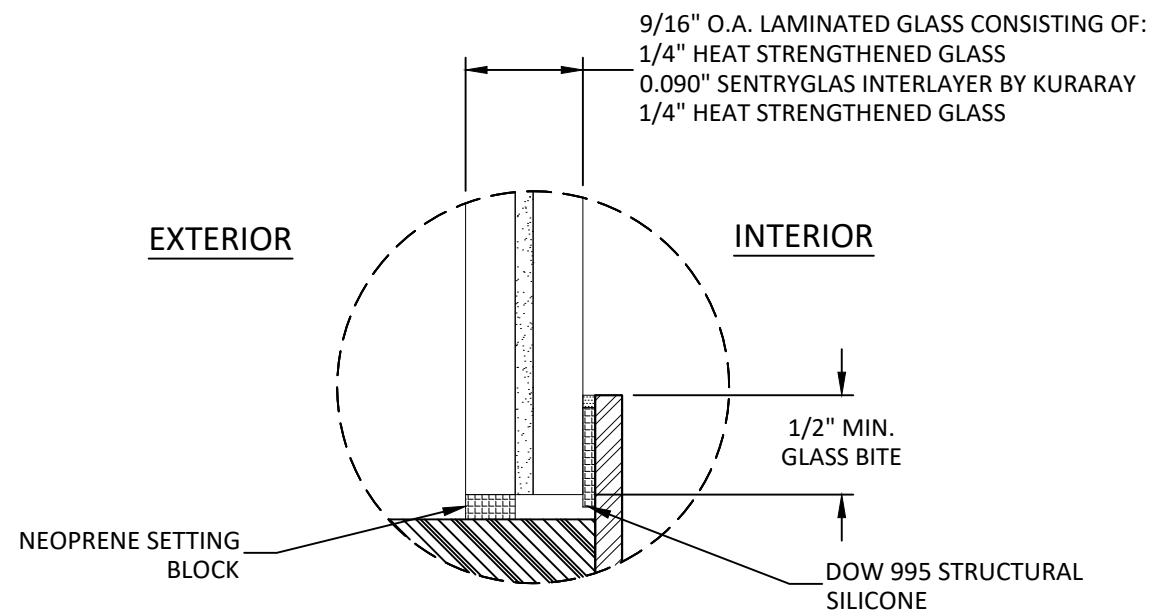
DWG. #: **POR011**

SHEET:  

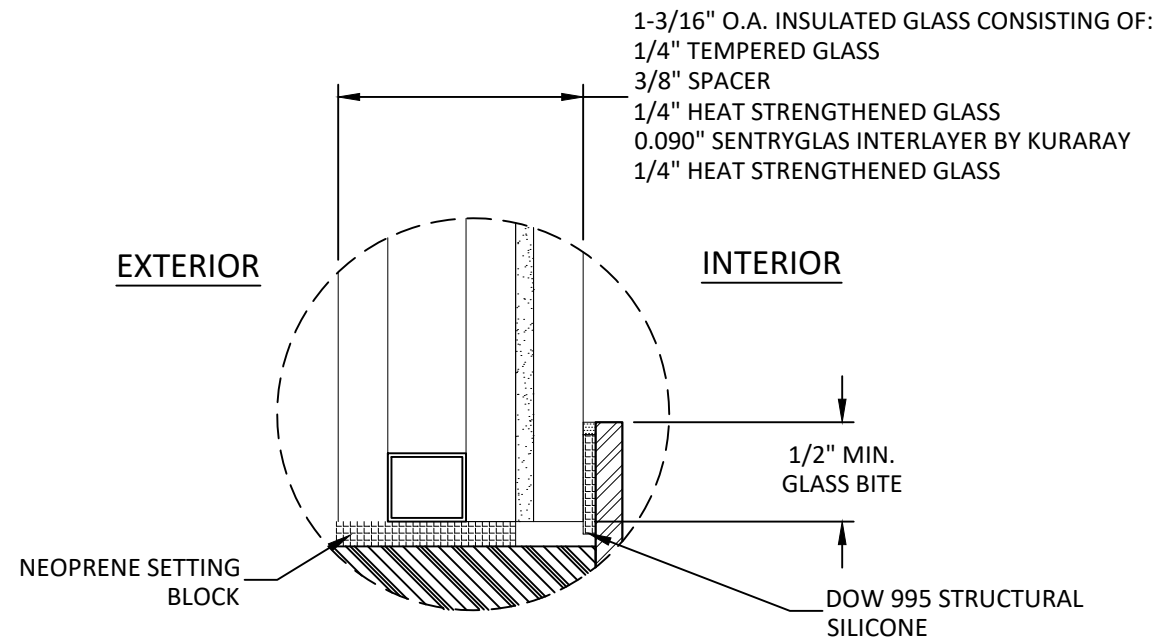
1

OF 10

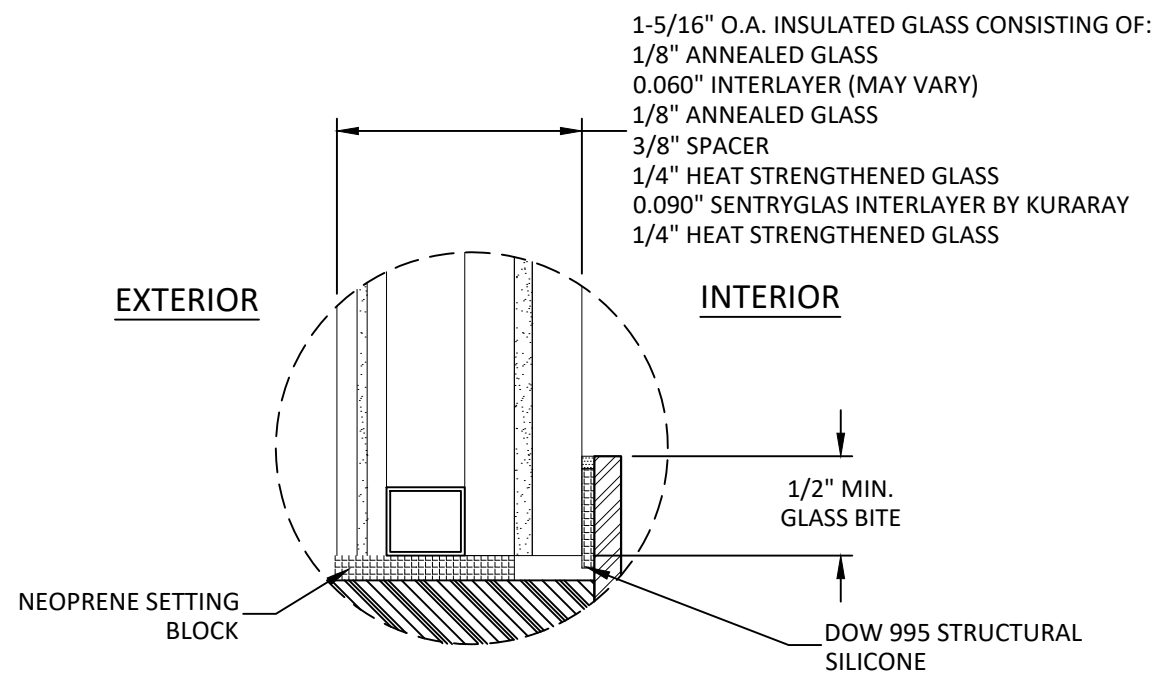
c:\users\harley\pant\building drops, inc\building drops landing - common\projects\portella steel doors & windows\fbc-22-0441.1 - fbc submittal - fx, cs, esd, mullionstiffener\dwgs\casement\hvhz\impact\por011- casement.dwg  
8/22/2025 2:08 PM



GLAZING DETAIL 1



GLAZING DETAIL 2



GLAZING DETAIL 3

SIMULATED DIVIDING LITE: OTHER QUALIFIED GLAZING BEADS:



GLAZING NOTES:

- GLASS TYPE COMPLIES WITH ASTM E1300 AND THE FBC SAFETY GLAZING REQUIREMENTS. PER THE FBC TEMPER AND SAFETY GLAZING REQUIREMENTS SHALL BE REVIEWED ON A SITE SPECIFIC BASIS.
- SETTING BLOCK DUROMETER HARDNESS OF 70-90 (SHORE A) AS REFERENCED IN FBC CHAPTER 24.
- SETTING BLOCKS TO BE LOCATED AT 1/4 SPAN LENGTH FOR GLASS WIDER THAN 36" AS PER FBC CHAPTER 24.
- D.L.O. AND DESIGN PRESSURES MAY NOT EXCEED MAX VALUES SHOWN HEREIN.
- WINDOW WAS TESTED WITHOUT THE USE OF A GLAZING BEAD. GLAZING BEAD IS OPTIONAL AND NOT REQUIRED. SPACER MATERIAL MAY VARY AS WELL. EXTERIOR GLASS LITE HEAT TREATMENT MAY VARY AS WELL.



PORTELLA STEEL WINDOWS & DOORS  
2727 W MOCKINGBIRD LANE, SUITE 102  
DALLAS, TEXAS 75235  
PH: (214)484-3134 FAX: (214)484-3357

TITLE: ARTISAN SERIES  
CASEMENT WINDOWS  
(HVBZ)(IMPACT)

GLAZING DETAILS

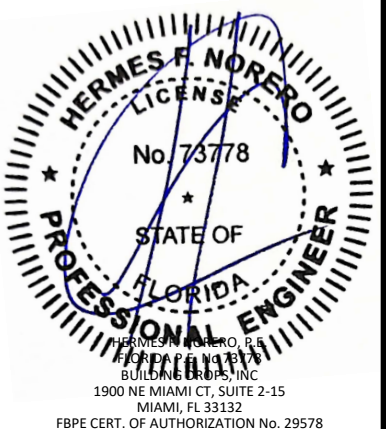
PREPARED BY: BUILDING DROPS, INC.

1900 NE MIAMI CT, SUITE 2-15  
MIAMI, FL 33132  
PH: (954)399-8478  
FAX: (954)744-4738  
WEB: www.buildingdrops.com



REMARKS	BY	DATE

THIS DOCUMENT IS THE PROPERTY OF BUILDING DROPS, INC. AND SHALL NOT BE REPRODUCED IN WHOLE OR PART WITHOUT WRITTEN CONSENT OF BUILDING DROPS, INC. ALTERATIONS, ADDITIONS, HIGHLIGHTING, OR OTHER MARKINGS TO THIS DOCUMENT ARE NOT PERMITTED AND INVALIDATE OUR CERTIFICATION.



FL #:

FL47738

DATE: 07.23.24

DWG. BY: HJ

CHK. BY: HFN

SCALE: NTS

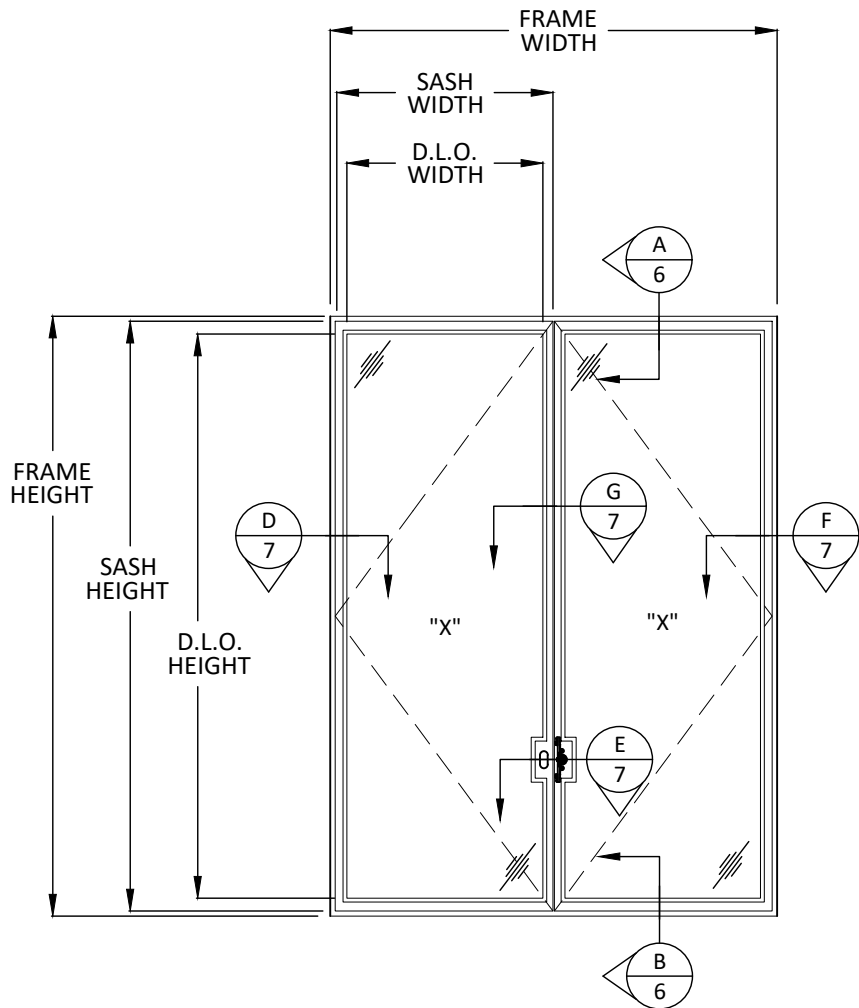
DWG. #: POR011

SHEET:

2

OF 10

c:\users\barley\pant\building drops, inc.\building drops\landing - common\projects\portella steel doors & windows\fbc-22-0441.1 - fbc submittal - fx, cs, esd, mullionstiffener\dwgs\casement\hvzh\impact\por011 - casement.dwg 8/22/2025 2:08 PM



ELEVATION  
FRENCH CASEMENT  
XX

SIZE NOTES:

VENT HEIGHT = FRAME HEIGHT - 1.625"  
VENT WIDTH = FRAME WIDTH/2 - 0.9375"

D.L.O. HEIGHT = FRAME HEIGHT - 5.75"  
D.L.O. WIDTH = FRAME WIDTH/2 - 4.5"

DESIGN PRESSURE TABLE FRENCH CASEMENT			
NOMINAL DIMS.		POS. (+)	NEG. (-)
FRAME WIDTH (IN.)	FRAME HEIGHT (IN.)		
24	48	60.0	65.0
30		60.0	65.0
36		60.0	65.0
42		60.0	65.0
48		60.0	65.0
54		60.0	65.0
60		60.0	65.0
66		60.0	65.0
72		60.0	65.0
78		60.0	65.0
84		60.0	65.0
90		60.0	65.0
96		60.0	65.0
102		60.0	65.0
108	54	60.0	65.0
114		60.0	65.0
120		60.0	65.0
24		60.0	65.0
30		60.0	65.0
36		60.0	65.0
42		60.0	65.0
48		60.0	65.0
54		60.0	65.0
60		60.0	65.0
66		60.0	65.0
72		60.0	65.0
78		60.0	65.0
84		60.0	65.0
90	60	60.0	65.0
96		60.0	65.0
102		60.0	65.0
108		60.0	65.0
114		60.0	65.0
120		60.0	65.0
24		60.0	65.0
30		60.0	65.0
36		60.0	65.0
42		60.0	65.0
48		60.0	65.0
54		60.0	65.0
60		60.0	65.0
66		60.0	65.0
72	66	60.0	65.0
78		60.0	65.0
84		60.0	65.0
90		60.0	65.0
96		60.0	65.0
102		60.0	65.0
108		60.0	65.0
114		60.0	65.0
120		60.0	65.0
24		60.0	65.0
30		60.0	65.0
36		60.0	65.0
42		60.0	65.0
48		60.0	65.0

DESIGN PRESSURE TABLE FRENCH CASEMENT			
NOMINAL DIMS.		POS. (+)	NEG. (-)
FRAME WIDTH (IN.)	FRAME HEIGHT (IN.)		
24	72	60.0	65.0
30		60.0	65.0
36		60.0	65.0
42		60.0	65.0
48		60.0	65.0
54		60.0	65.0
60		60.0	65.0
66		60.0	65.0
72		60.0	65.0
78		60.0	65.0
84		60.0	65.0
90		60.0	65.0
96		60.0	65.0
102	78	60.0	65.0
108		60.0	65.0
114		60.0	65.0
120		60.0	65.0
24		60.0	65.0
30		60.0	65.0
36		60.0	65.0
42		60.0	65.0
48		60.0	65.0
54		60.0	65.0
60		60.0	65.0
66		60.0	65.0
72		60.0	65.0
78	84	55.0	60.0
84		55.0	60.0
90		60.0	65.0
96		60.0	65.0
102		60.0	65.0
108		60.0	65.0
114		60.0	65.0
120		60.0	65.0
24		60.0	65.0
30		60.0	65.0
36		60.0	65.0
42		60.0	65.0
48		60.0	65.0
54	90	60.0	65.0
60		60.0	65.0
66		60.0	65.0
72		60.0	65.0
78		55.0	60.0
84		60.0	65.0
90		60.0	65.0
96		60.0	65.0
102		60.0	65.0
108		60.0	65.0
114		60.0	65.0
120		60.0	65.0
24	96-5/8	60.0	65.0
30		60.0	65.0
36		60.0	65.0
42		60.0	65.0
48		60.0	65.0
54		60.0	65.0
60		60.0	65.0
66		60.0	65.0
72		60.0	65.0
78		60.0	65.0
84		60.0	65.0
90		60.0	65.0
96		60.0	65.0
102		60.0	65.0



PORTELLA STEEL WINDOWS & DOORS  
2727 W MOCKINGBIRD LANE, SUITE 102  
DALLAS, TEXAS 75235  
PH: (214)484-3134 FAX: (214)484-3357

TITLE: ARTISAN SERIES  
CASEMENT WINDOWS  
(HVHZ)(IMPACT)

ELEVATION & DESIGN PRESSURE TABLES

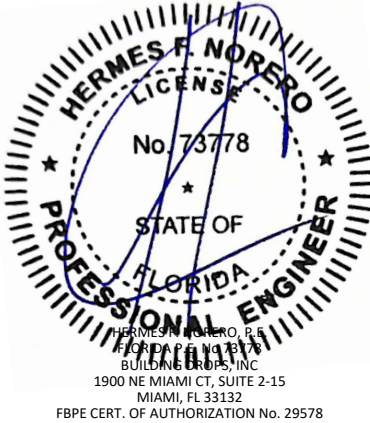
PREPARED BY: BUILDING DROPS, INC.

1900 NE MIAMI CT, SUITE 2-15  
MIAMI, FL 33132  
PH: (954)399-8478  
FAX: (954)744-4738  
WEB: www.buildingdrops.com



REMARKS	BY	DATE

THIS DOCUMENT IS THE PROPERTY OF BUILDING DROPS, INC. AND SHALL NOT BE REPRODUCED IN WHOLE OR PART WITHOUT WRITTEN CONSENT OF BUILDING DROPS, INC. ALTERATIONS, ADDITIONS, HIGHLIGHTING, OR OTHER MARKINGS TO THIS DOCUMENT ARE NOT PERMITTED AND INVALIDATE OUR CERTIFICATION.



FL #: FL47738

DATE: 07.23.24

DWG. BY: HJ  
CHK. BY: HFN

SCALE: NTS

DWG. #: POR011

SHEET:

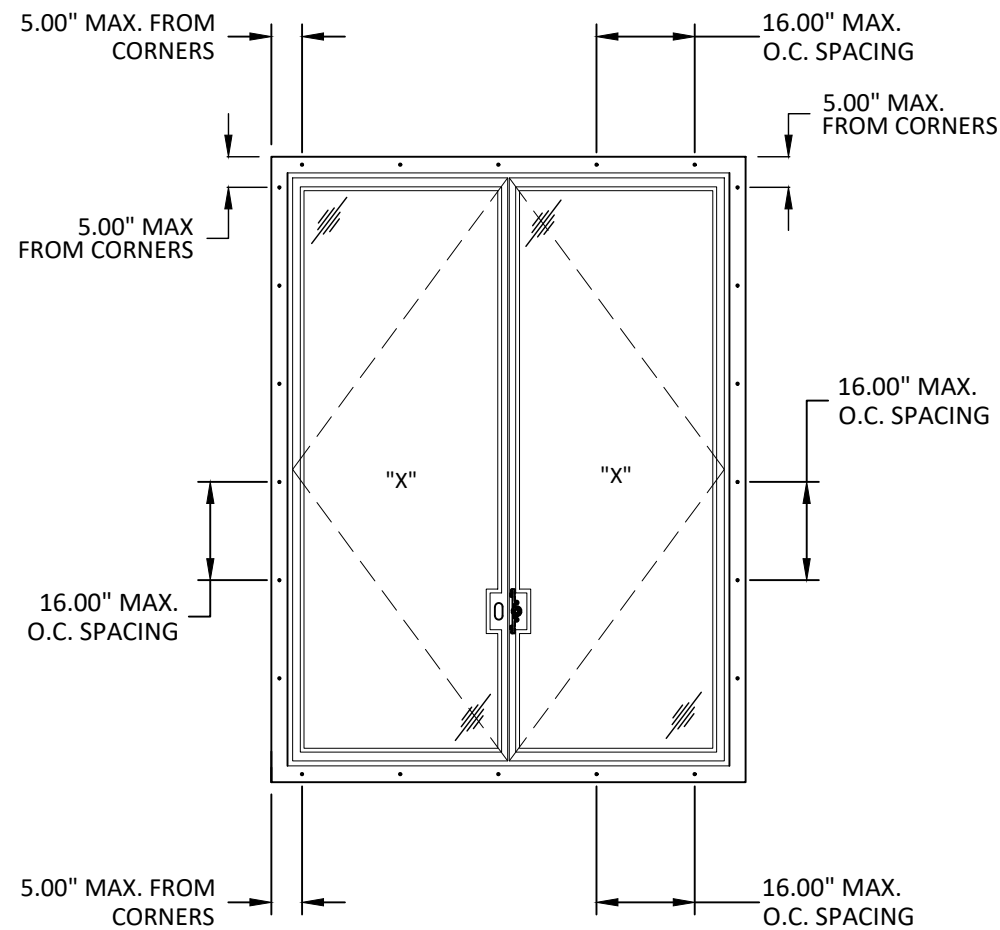
3

OF 10

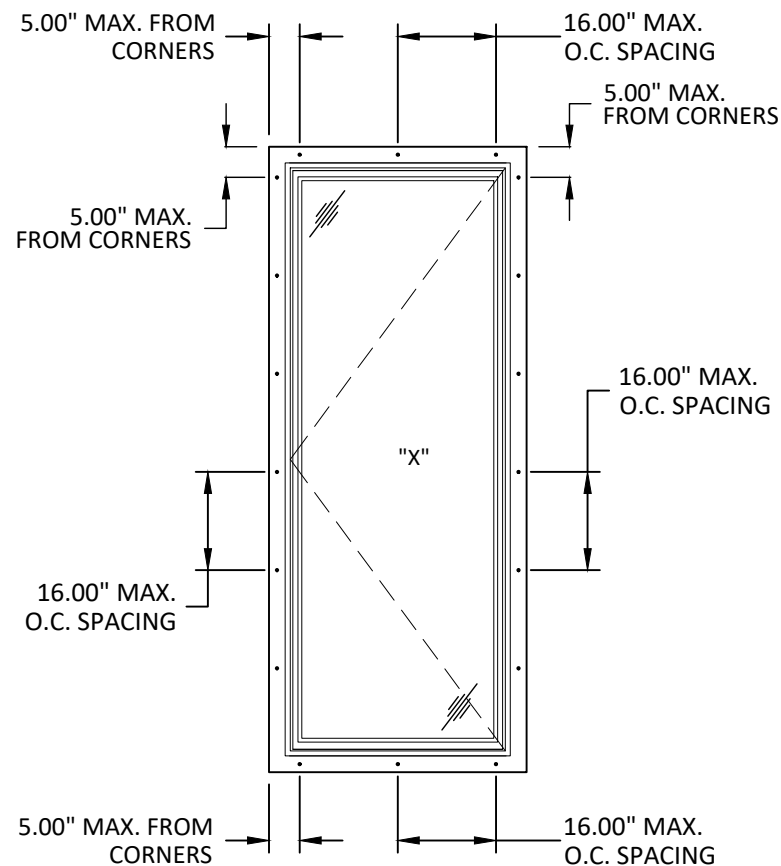




c:\users\harley\pant\building drops, inc\building drops landing - common\projects\portella steel doors & windows\fbc-22-0441.1 - fbc submittal - fx, cs, esd, mullionstiffener\dwgs\casement\hvzh\impact\por011 - casement.dwg  
8/22/2025 2:08 PM



ANCHOR LAYOUT  
FRENCH CASEMENT WINDOW



ANCHOR LAYOUT  
SINGLE CASEMENT WINDOW



PORTELLA STEEL WINDOWS & DOORS  
2727 W MOCKINGBIRD LANE, SUITE 102  
DALLAS, TEXAS 75235  
PH: (214)484-3134 FAX: (214)484-3357

TITLE: ARTISAN SERIES  
CASEMENT WINDOWS  
(HVHZ)(IMPACT)

ANCHOR LAYOUTS

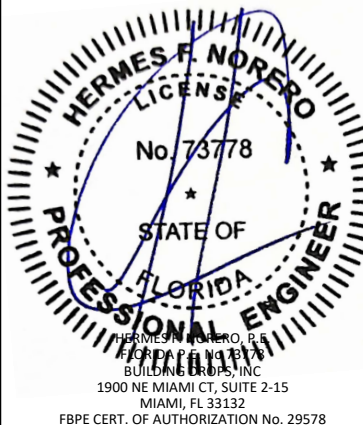
PREPARED BY: BUILDING DROPS, INC.

1900 NE MIAMI CT, SUITE 2-15  
MIAMI, FL 33132  
PH: (954)399-8478  
FAX: (954)744-4738  
WEB: www.buildingdrops.com



REMARKS	BY	DATE

THIS DOCUMENT IS THE PROPERTY OF BUILDING DROPS, INC. AND SHALL NOT BE REPRODUCED IN WHOLE OR PART WITHOUT WRITTEN CONSENT OF BUILDING DROPS, INC. ALTERATIONS, ADDITIONS, HIGHLIGHTING, OR OTHER MARKINGS TO THIS DOCUMENT ARE NOT PERMITTED AND INVALIDATE OUR CERTIFICATION.



FL #: **FL47738**

DATE: **07.23.24**

DWG. BY: **HJ**

CHK. BY: **HFN**

SCALE: **NTS**

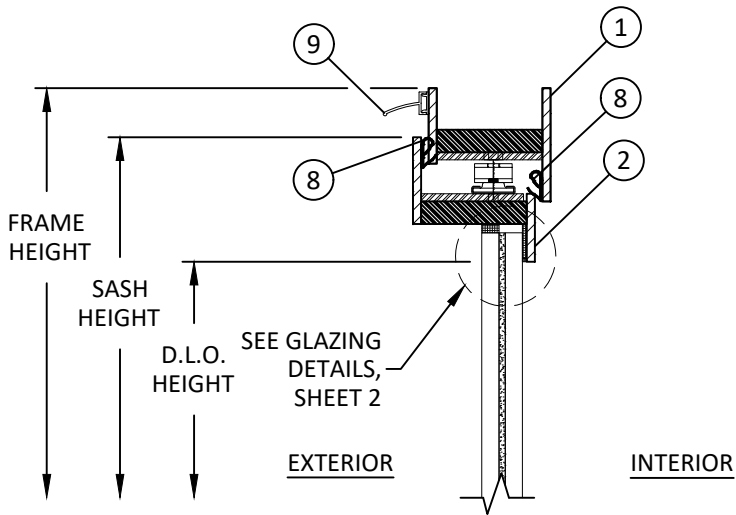
DWG. #: **POR011**

SHEET:

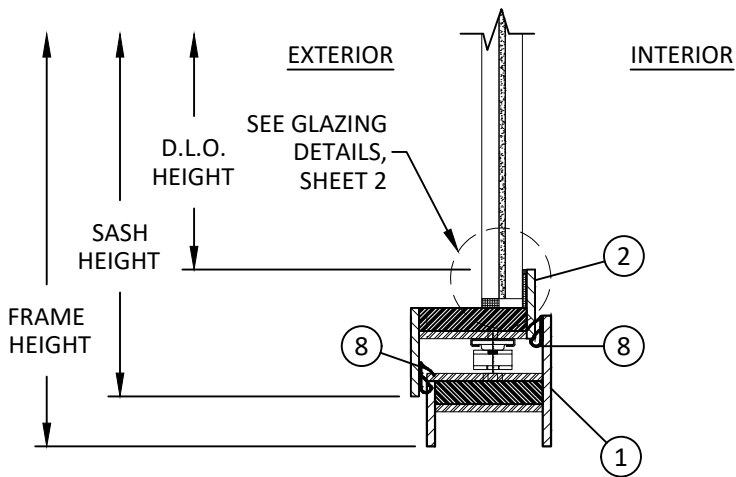
**5**

OF 10

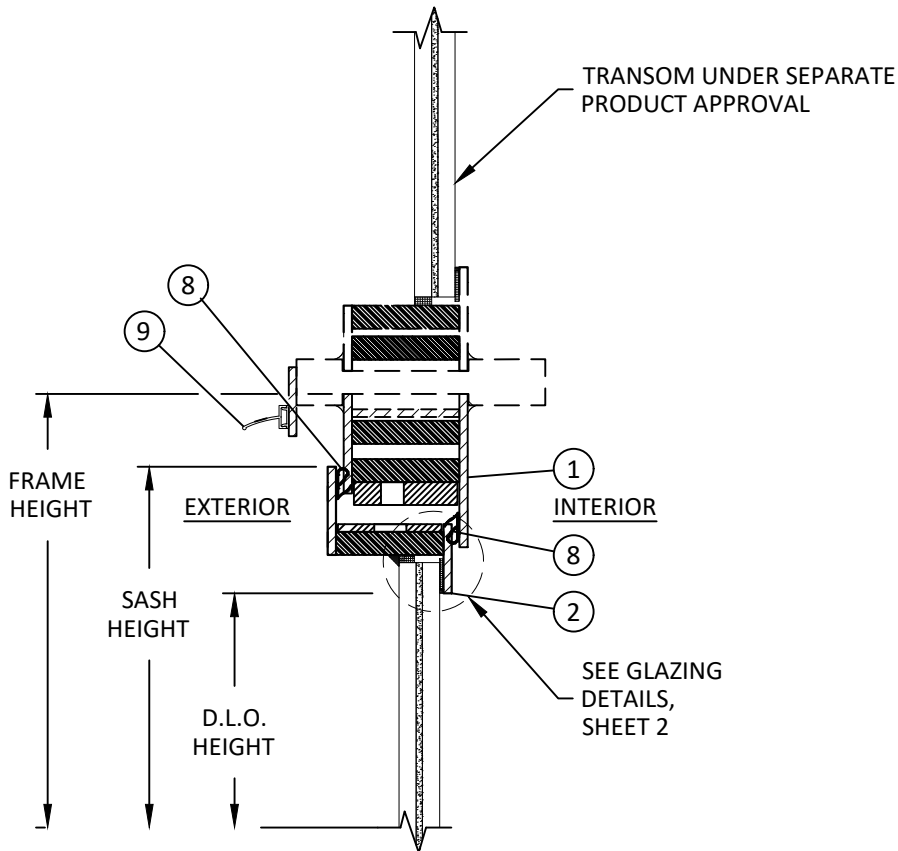
c:\users\harley\pant\building drops, inc.\building drops landing - common\projects\portella steel doors & windows\fb-22-0441.1 - fbc submittal - fx, cs, esd, mullionstiffener\dwgs\casement\hvzh\impact\por011 - casement.dwg  
8/22/2025 2:08 PM



**A**  
**6** VERTICAL SECTION  
HEAD



**B**  
**6** VERTICAL SECTION  
SILL



**C**  
**6** VERTICAL SECTION  
HEAD TO TRANSOM



PORTELLA STEEL WINDOWS & DOORS  
2727 W MOCKINGBIRD LANE, SUITE 102  
DALLAS, TEXAS 75235  
PH: (214)484-3134 FAX: (214)484-3357

TITLE: ARTISAN SERIES  
CASEMENT WINDOWS  
(HVHZ)(IMPACT)

VERTICAL SECTIONS

PREPARED BY: BUILDING DROPS, INC.

1900 NE MIAMI CT, SUITE 2-15

MIAMI, FL 33132

PH: (954)399-8478

FAX: (954)744-4738

WEB: www.buildingdrops.com



REMARKS	BY	DATE

THIS DOCUMENT IS THE PROPERTY OF BUILDING DROPS, INC. AND SHALL NOT BE REPRODUCED IN WHOLE OR PART WITHOUT WRITTEN CONSENT OF BUILDING DROPS, INC. ALTERATIONS, ADDITIONS, HIGHLIGHTING, OR OTHER MARKINGS TO THIS DOCUMENT ARE NOT PERMITTED AND INVALIDATE OUR CERTIFICATION.



FL #:

**FL47738**

DATE: **07.23.24**

DWG. BY:  
**HJ**

CHK. BY:  
**HFN**

SCALE: **NTS**

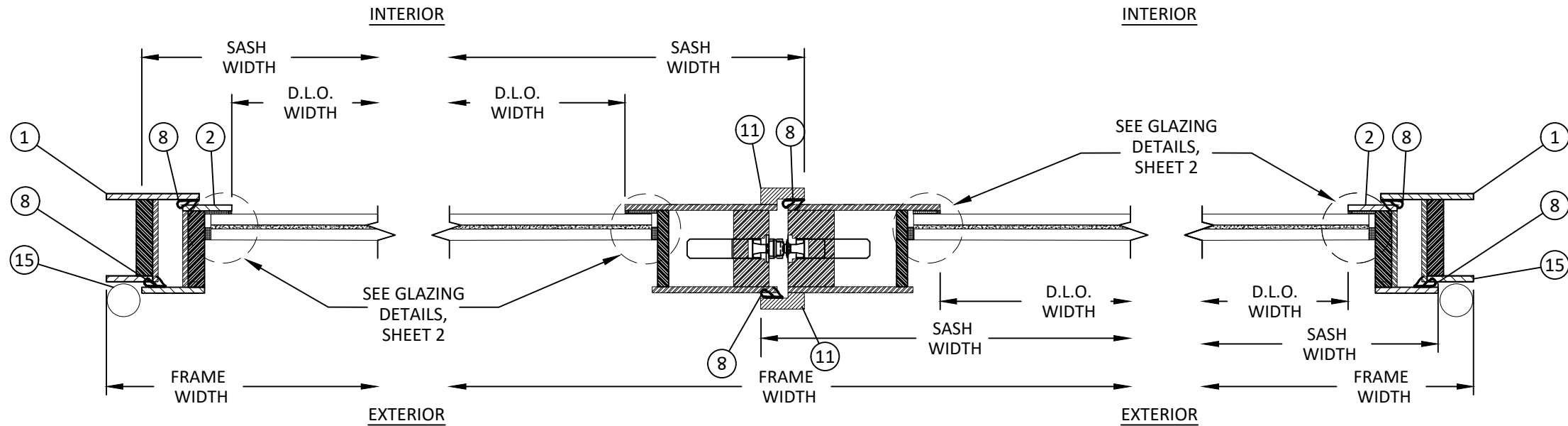
DWG. #: **POR011**

SHEET:

**6**

OF 10

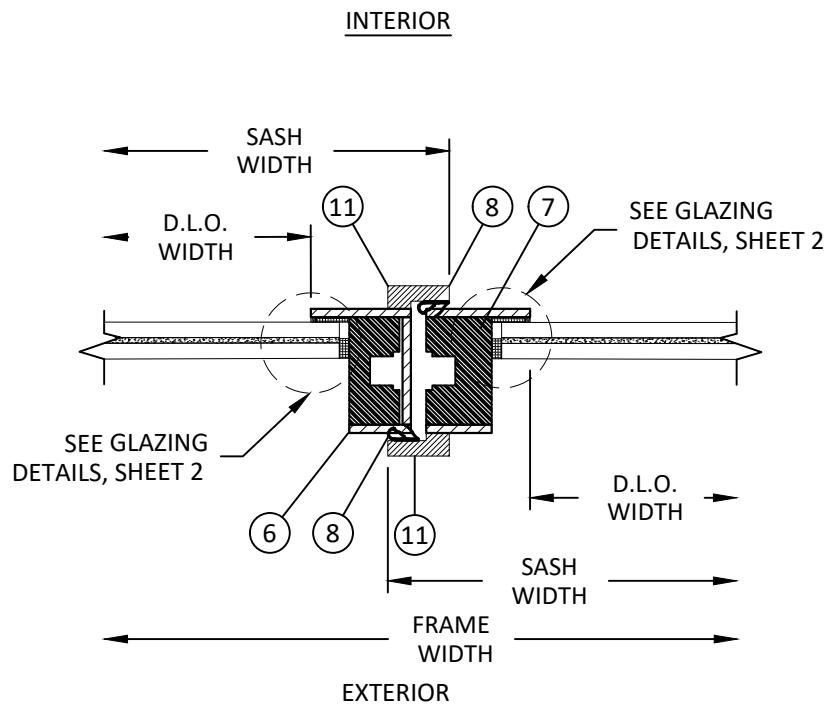
c:\users\harley\pant\building drops, inc\building drops landing - common\projects\portella steel doors & windows\fbc-22-0441.1 - fbc submittal - fx, cs, esd, mullionstiffener\dwgs\casement\hvzh\impact\por011 - casement.dwg  
8/22/2025 2:08 PM



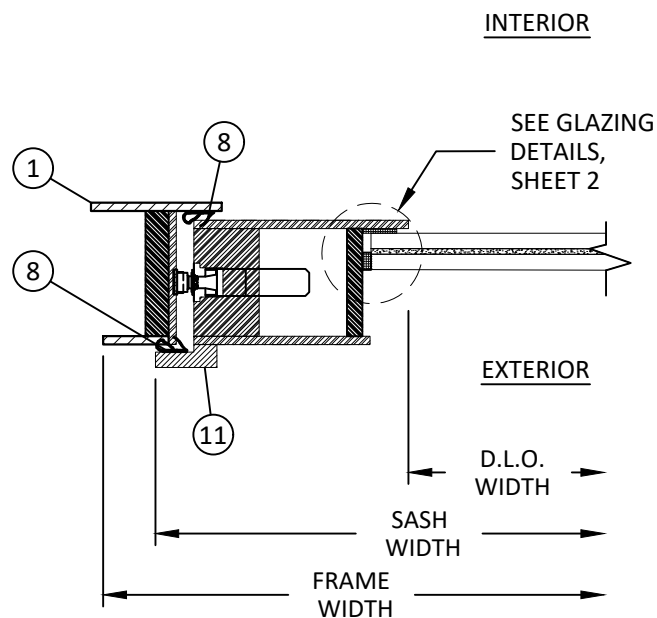
**D**  
**7** HORIZONTAL SECTION  
HINGE JAMB

**E**  
**7** HORIZONTAL SECTION  
LOCK BOX

**F**  
**7** HORIZONTAL SECTION  
HINGE JAMB



**G**  
**7** HORIZONTAL SECTION  
MEETING STILE



**H**  
**7** HORIZONTAL SECTION  
LOCK JAMB



PORTELLA STEEL WINDOWS & DOORS  
2727 W MOCKINGBIRD LANE, SUITE 102  
DALLAS, TEXAS 75235  
PH: (214)484-3134 FAX: (214)484-3357

TITLE: ARTISAN SERIES  
CASEMENT WINDOWS  
(HVHZ)(IMPACT)

HORIZONTAL SECTIONS

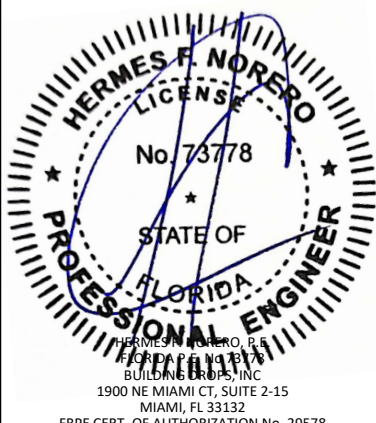
PREPARED BY: BUILDING DROPS, INC.

1900 NE MIAMI CT, SUITE 2-15  
MIAMI, FL 33132  
PH: (954)399-8478  
FAX: (954)744-4738  
WEB: www.buildingdrops.com



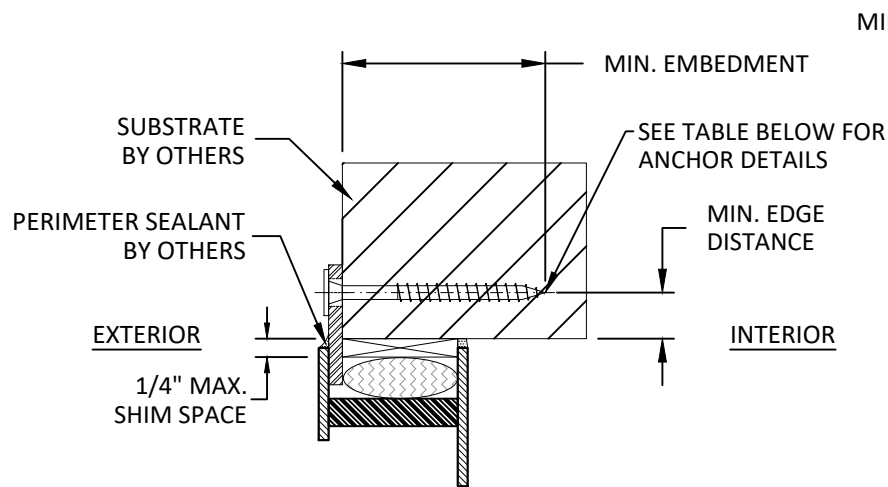
REMARKS	BY	DATE

THIS DOCUMENT IS THE PROPERTY OF BUILDING DROPS, INC. AND SHALL NOT BE REPRODUCED IN WHOLE OR PART WITHOUT WRITTEN CONSENT OF BUILDING DROPS, INC. ALTERATIONS, ADDITIONS, HIGHLIGHTING, OR OTHER MARKINGS TO THIS DOCUMENT ARE NOT PERMITTED AND INVALIDATE OUR CERTIFICATION.

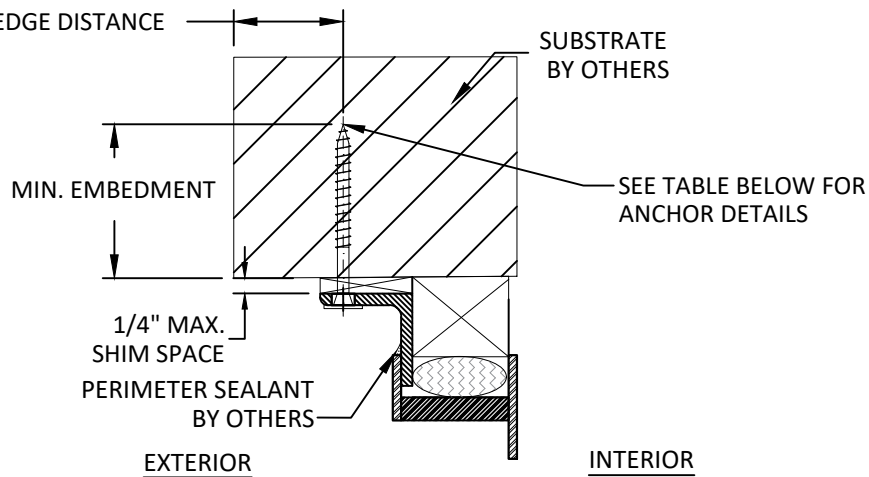


FL #:	FL47738
DATE:	07.23.24
DWG. BY:	HJ
CHK. BY:	HFN
SCALE:	NTS
DWG. #:	POR011
SHEET:	7

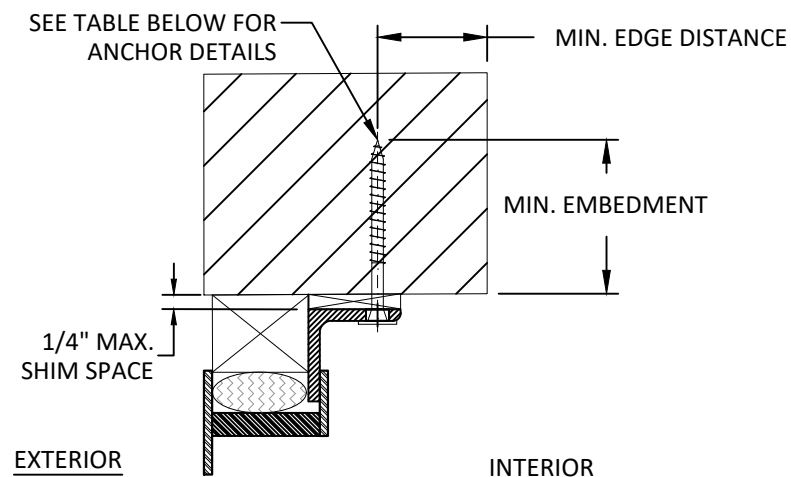
c:\users\hardley\pant\building drops, inc\building drops landing - common\projects\portella steel doors & windows\fbc-22-0441.1 - fbc submittal - fx, cs, esd, mullionstiffener\dwgs\casement\hvzh2\impact\por011 - casement.dwg  
8/22/2025 2:08 PM



**A**  
**8**  
**VERTICAL SECTION**  
**HEAD - NAIL FIN**  
NOTE: SILL & JAMB SIMILAR



**B**  
**8**  
**VERTICAL SECTION**  
**HEAD - EXTERIOR ANGLE FLANGE**  
NOTE: SILL & JAMB SIMILAR



**C**  
**8**  
**VERTICAL SECTION**  
**HEAD - INTERIOR ANGLE FLANGE**  
NOTE: SILL & JAMB SIMILAR

INSTALLATION NOTES:

- ONE INSTALLATION ANCHOR IS REQUIRED AT EACH ANCHOR LOCATION SHOWN, UNLESS OTHERWISE STATED ON SHEET 5.
- INSTALL INDIVIDUAL INSTALLATION ANCHORS WITHIN A TOLERANCE OF  $\pm 1/2"$  OF THE DEPICTED LOCATION IN THE ANCHOR LAYOUT DETAIL ( I.E; WITHOUT CONSIDERATION OF TOLERANCES). TOLERANCES ARE NOT CUMULATIVE FROM ONE INSTALLATION ANCHOR TO THE NEXT.
- SHIM AS REQUIRED AT EACH INSTALLATION ANCHOR WITH LOAD BEARING SHIM(S). MAXIMUM ALLOWABLE SHIM STACK TO BE 1/4 INCH. SHIM WHERE SPACE OF 1/16 INCH OR GREATER OCCURS. SHIM(S) SHALL BE CONSTRUCTED OF HIGH DENSITY PLASTIC OR BETTER.
- MINIMUM EMBEDMENT AND EDGE DISTANCE EXCLUDE WALL FINISHES, INCLUDING BUT NOT LIMITED TO STUCCO, FOAM, BRICK VENEER, AND SIDING.
- INSTALLATION ANCHORS AND ASSOCIATED HARDWARE MUST BE MADE OF CORROSION RESISTANT MATERIAL OR HAVE A CORROSION RESISTANT COATING.
- FOR MASONRY OR CONCRETE OPENINGS, A 1X WOOD BUCK MAY BE USED (OPTIONAL) AS LONG AS THE MINIMUM EMBEDMENT AND EDGE DISTANCE REQUIREMENTS ARE STILL MET WITHIN THE CORRESPONDING HOST SUBSTRATE. SEE GENERAL NOTE #3 ON SHEET 1 FOR MORE INFORMATION.
- FOR HOLLOW BLOCK AND GROUT FILLED BLOCK, DO NOT INSTALL INSTALLATION ANCHORS INTO MORTAR JOINTS. EDGE DISTANCE IS MEASURED FROM FREE EDGE OF BLOCK OR EDGE OF MORTAR JOINT INTO FACE SHELL OF BLOCK.
- INSTALLATION ANCHORS SHALL BE INSTALLED IN ACCORDANCE WITH ANCHOR MANUFACTURER'S INSTALLATION INSTRUCTIONS, AND ANCHORS SHALL NOT BE USED IN SUBSTRATES WITH STRENGTHS LESS THAN THE MINIMUM STRENGTH SPECIFIED BY THE ANCHOR MANUFACTURER
- INSTALLATION SHALL FOLLOW MANUFACTURERS RECOMMENDATIONS FOR SEALING FIXED WINDOWS AND ACCESSORY ITEMS.

ANCHOR SCHEDULE				
METHOD	SUBSTRATE	ANCHOR TYPE	MIN. EMBEDMENT	MIN. EDGE DISTANCE
NAIL FIN, THROUGH FRAME, & BENT ANGLE INSTALLATION	WOOD: MIN. SG = 0.55	5/16" LAG SCREW PAN HEAD	1.50"	0.75"
	METAL: 18 GAUGE STEEL, MIN. Fy = 33KSI ALUMINUM: 1/8" MIN., 6063-T5	5/16" SELF-DRILLING SCREW PAN HEAD	3 THREADS MIN PENETRATION BEYOND STRUCTURE	0.50"
	CONCRETE: f'c=3000PSI	5/16" PAN HEAD	1.75"	2.50"
	MASONRY: CMU per ASTM C90 MIN. 2000 PSI	5/16" PAN HEAD		



PORTELLA STEEL WINDOWS & DOORS  
2727 W MOCKINGBIRD LANE, SUITE 102  
DALLAS, TEXAS 75235  
PH: (214)484-3134 FAX: (214)484-3357

TITLE:  
ARTISAN SERIES  
CASEMENT WINDOWS  
(HVHZ)(IMPACT)

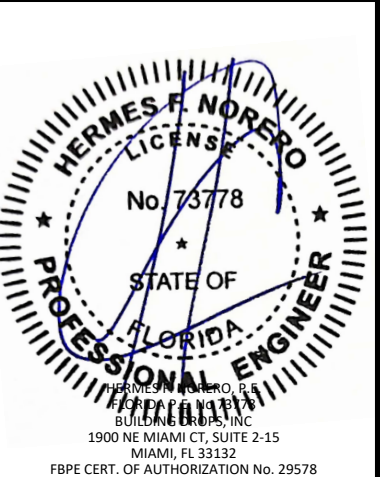
INSTALLATION NOTES & ANCHOR DETAILS

PREPARED BY:  
BUILDING DROPS, INC.  
1900 NE MIAMI CT, SUITE 2-15  
MIAMI, FL 33132  
PH: (954)399-8478  
FAX: (954)744-4738  
WEB: www.buildingdrops.com

BUILDING DROPS

REMARKS	BY	DATE

THIS DOCUMENT IS THE PROPERTY OF BUILDING DROPS, INC. AND SHALL NOT BE REPRODUCED IN WHOLE OR PART WITHOUT WRITTEN CONSENT OF BUILDING DROPS, INC. ALTERATIONS, ADDITIONS, HIGHLIGHTING, OR OTHER MARKINGS TO THIS DOCUMENT ARE NOT PERMITTED AND INVALIDATE OUR CERTIFICATION.



FL #:  
**FL47738**

DATE: **07.23.24**

DWG. BY: **HJ**      CHK. BY: **HFN**

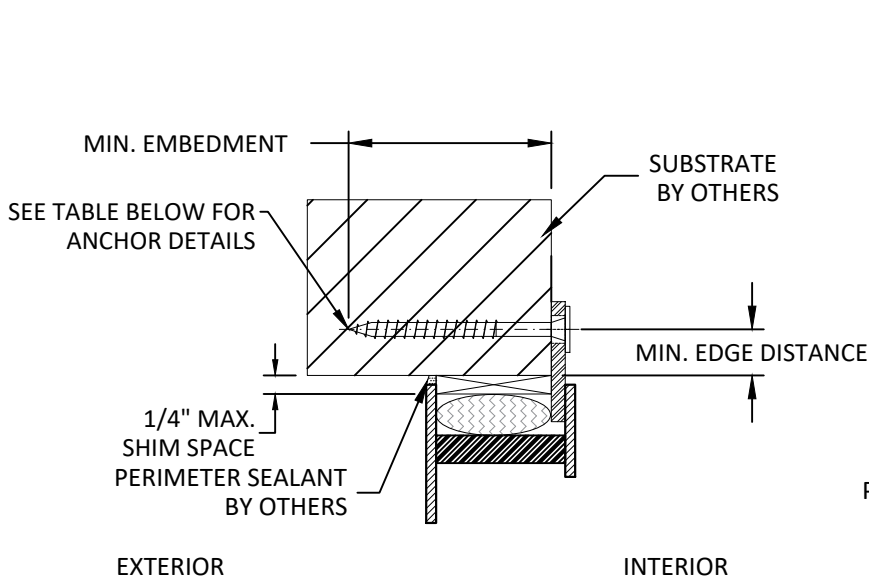
SCALE: **NTS**

DWG. #: **POR011**

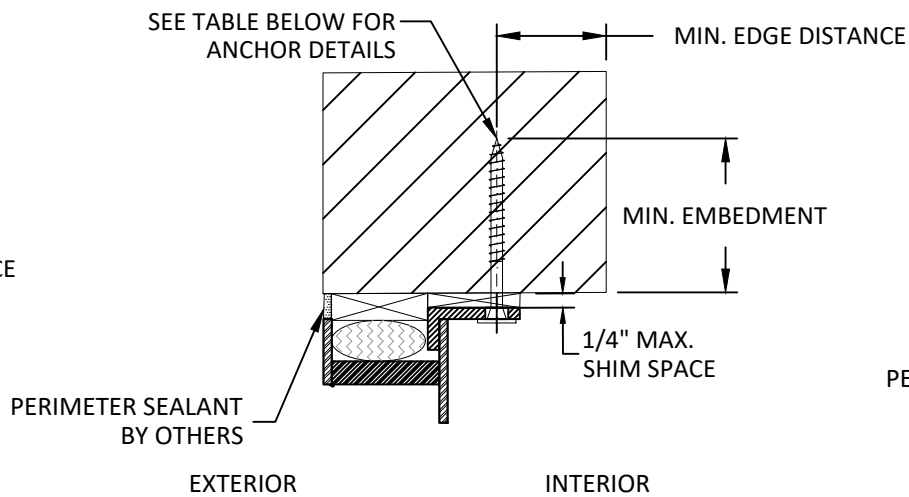
SHEET:  
**8**  
OF 10



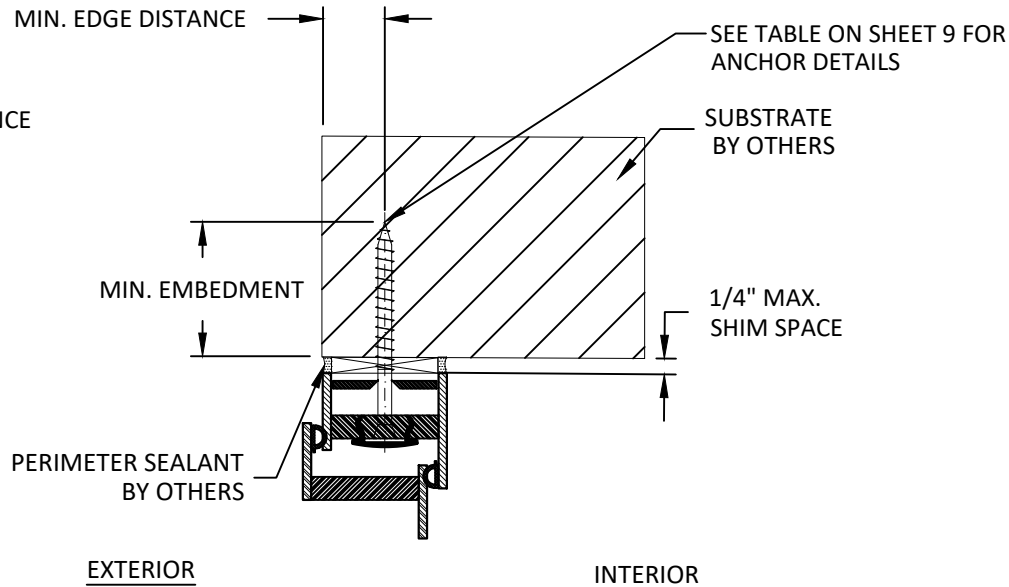
c:\users\harley\pant\building drops, inc.\building drops landing - common\projects\portella steel doors & windows\fbc-22-0441.1 - fbc submittal - fx, cs, esd, mullion stiffness\dwgs\casement\hvhz\impact\por011 - casement.dwg  
8/22/2025 2:08 PM



**D**  
**9** VERTICAL SECTION  
HEAD - INTERIOR FLAT BAR



**E**  
**9** VERTICAL SECTION  
HEAD - INTERIOR FLANGE



**F**  
**9** VERTICAL SECTION  
HEAD - THROUGH FRAME



PORTELLA STEEL WINDOWS & DOORS  
2727 W MOCKINGBIRD LANE, SUITE 102  
DALLAS, TEXAS 75235  
PH: (214)484-3134 FAX: (214)484-3357

ARTISAN SERIES  
CASEMENT WINDOWS  
(HVBZ)(IMPACT)

ANCHOR DETAILS

PREPARED BY: BUILDING DROPS, INC.

1900 NE MIAMI CT, SUITE 2-15  
MIAMI, FL 33132  
PH: (954)399-8478  
FAX: (954)744-4738  
WEB: www.buildingdrops.com



REMARKS	BY	DATE

THIS DOCUMENT IS THE PROPERTY OF BUILDING DROPS, INC. AND SHALL NOT BE REPRODUCED IN WHOLE OR PART WITHOUT WRITTEN CONSENT OF BUILDING DROPS, INC. ALTERATIONS, ADDITIONS, HIGHLIGHTING, OR OTHER MARKINGS TO THIS DOCUMENT ARE NOT PERMITTED AND INVALIDATE OUR CERTIFICATION.



FL #:  
**FL47738**

DATE: **07.23.24**

DWG. BY:  
**HJ**

CHK. BY:  
**HFN**

SCALE: **NTS**

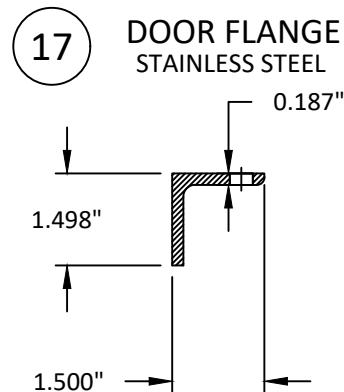
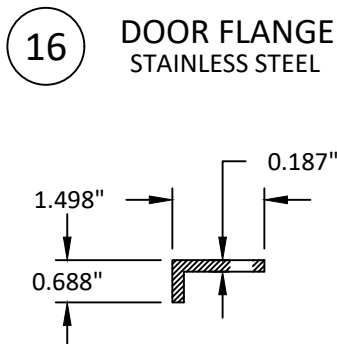
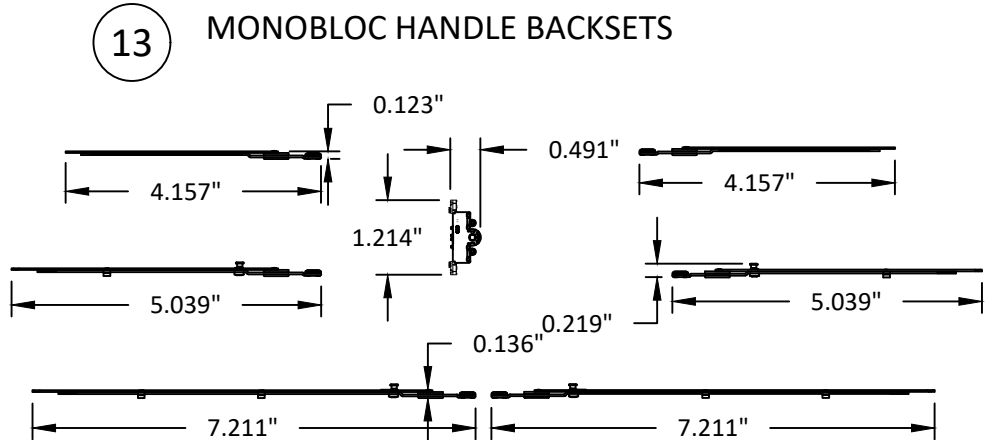
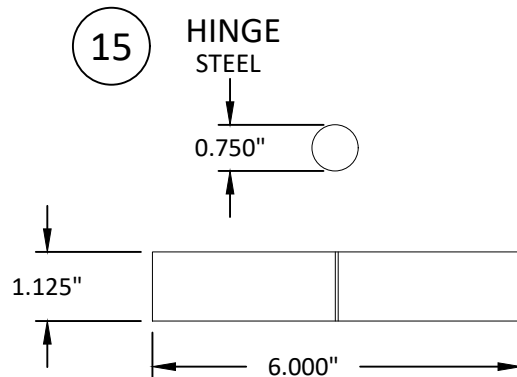
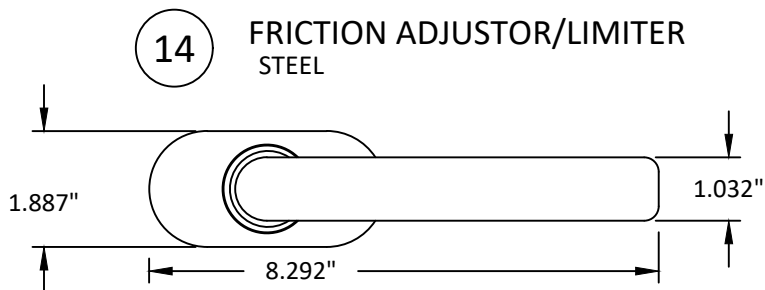
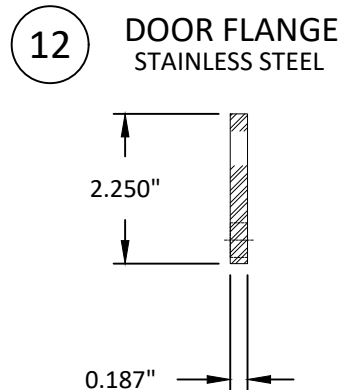
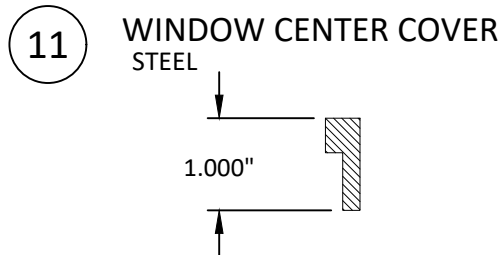
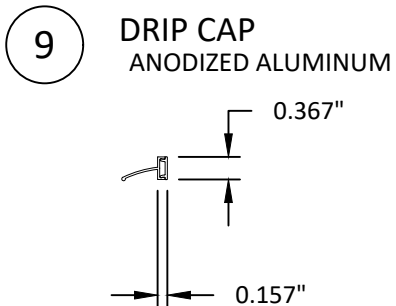
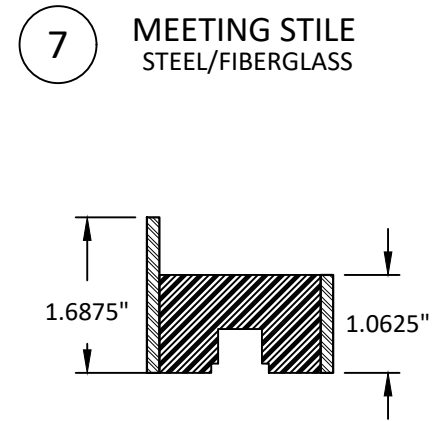
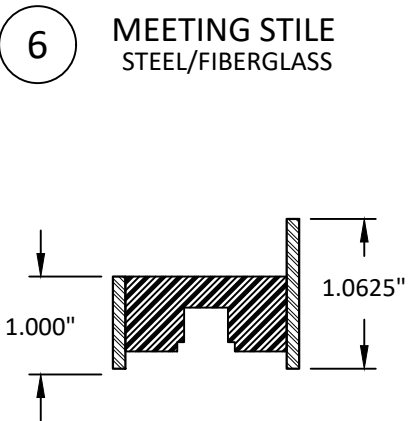
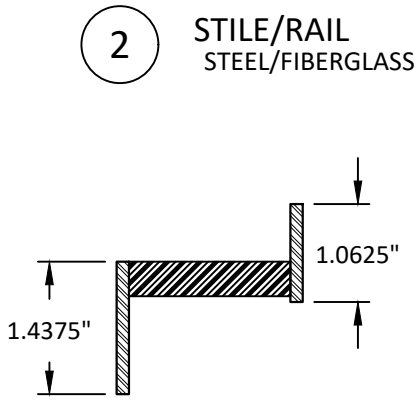
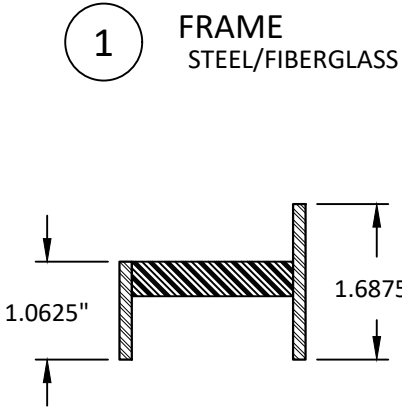
DWG. #: **POR011**

SHEET:

**9**

OF 10

BILL OF MATERIALS			
ITEM	PART NO.	DESCRIPTION	MATERIAL
1	04	FRAME	STEEL/FIBERGLASS
2	013	STILE/RAIL	STEEL/FIBERGLASS
3	05	FRAME	STEEL/FIBERGLASS
4	03	FRAME	STEEL/FIBERGLASS
5	14	FRAME/SIDPROFILE	STEEL/FIBERGLASS
6	MP2	MEETING STILE	STEEL/FIBERGLASS
7	MP2	MEETING STILE	STEEL/FIBERGLASS
8	GASKET	TRIMLOK GASKET	EPDM
9	-	DRIP CAP	ANODIZED ALUMINUM
10	-	MULLED PICE	STAINLESS STEEL
11	-	WINDOW CENTER COVER	STAINLESS STEEL
12	-	DOOR FLANGE	STAINLESS STEEL
13	-	MONOBLOC HANDLE BACKSETS	-
14	-	FRICTION ADJUSTOR/LIMITER	-
15	-	HINGE	STEEL
16		DOOR FLANGE	STAINLESS STEEL
17		DOOR FLANGE	STAINLESS STEEL



PORTELLA STEEL WINDOWS & DOORS  
2727 W MOCKINGBIRD LANE, SUITE 102  
DALLAS, TEXAS 75235  
PH: (214)484-3134 FAX: (214)484-3357

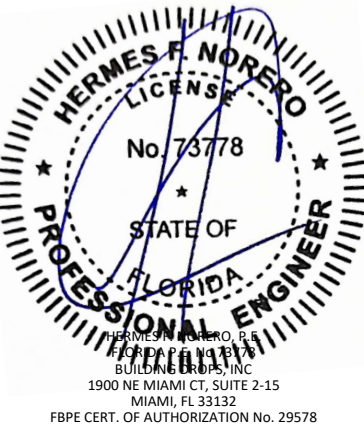
TITLE: ARTISAN SERIES  
CASEMENT WINDOWS  
(HVHZ)(IMPACT)

BILL OF MATERIALS AND COMPONENTS

PREPARED BY: BUILDING DROPS, INC.  
1900 NE MIAMI CT, SUITE 2-15  
MIAMI, FL 33132  
PH: (954)399-8478  
FAX: (954)744-4738  
WEB: www.buildingdrops.com

REMARKS	BY	DATE

THIS DOCUMENT IS THE PROPERTY OF BUILDING DROPS, INC. AND SHALL NOT BE REPRODUCED IN WHOLE OR PART WITHOUT WRITTEN CONSENT OF BUILDING DROPS, INC. ALTERATIONS, ADDITIONS, HIGHLIGHTING, OR OTHER MARKINGS TO THIS DOCUMENT ARE NOT PERMITTED AND INVALIDATE OUR CERTIFICATION.



FL #:  
**FL47738**

DATE: **07.23.24**

DWG. BY: **HJ** CHK. BY: **HFN**

SCALE: **NTS**

DWG. #: **POR011**

SHEET: