

PORTELLA STEEL DOORS AND WINDOWS

ARTISAN SERIES AWNING WINDOW

(HVHZ)(IMPACT)

GENERAL NOTES:

1. THE PRODUCT SHOWN HEREIN IS DESIGNED AND MANUFACTURED TO COMPLY WITH THE CURRENT EDITION FLORIDA BUILDING CODE (FBC), **INCLUDING HVHZ** AND HAS BEEN EVALUATED ACCORDING TO THE FOLLOWING:
 - TAS 201-94
 - TAS 202-94
 - TAS 203-94
 - AAMA/WDMA/CSA 101/I.S.2/A440-17
 - ASTM E1886-19
 - ASTM E1996-20
2. ADEQUACY OF THE EXISTING STRUCTURAL CONCRETE/MASONRY, 2X FRAMING AND METAL STUD FRAMING AS A MAIN WIND FORCE RESISTING SYSTEM CAPABLE OF WITHSTANDING AND TRANSFERRING APPLIED PRODUCT LOADS TO THE FOUNDATION IS THE RESPONSIBILITY OF THE ENGINEER OR ARCHITECT OF RECORD FOR THE PROJECT OF INSTALLATION.
3. 1X AND 2X BUCKS (WHEN USED) SHALL BE DESIGNED AND INSTALLATION IS THE RESPONSIBILITY OF THE ENGINEER OR ARCHITECT OF RECORD FOR THE PROJECT OF INSTALLATION
4. THE INSTALLATION DETAILS DESCRIBED HEREIN ARE GENERIC AND MAY NOT REFLECT ACTUAL CONDITIONS FOR A SPECIFIC SITE. IF SITE CONDITIONS CAUSE INSTALLATION TO DEVIATE FROM THE REQUIREMENTS DETAILED HEREIN, A LICENSED ENGINEER OR ARCHITECT SHALL PREPARE SITE SPECIFIC DOCUMENTS FOR USE WITH THIS DOCUMENT.
5. APPROVED IMPACT PROTECTIVE SYSTEM **IS NOT REQUIRED** ON THIS PRODUCT IN AREAS REQUIRING IMPACT RESISTANCE.
6. AWNING FRAME MATERIAL: HOT ROLLED STAINLESS STEEL 304, POLYESTER FIBERGLASS
7. ALL STRUCTURAL MATERIALS & DISSIMILAR METALS SHALL BE PROTECTED , TREATED, PAINTED, COATED, AND / OR ISOLATED AS REQUIRED IN THE APPLICABLE SECTIONS OF THE CURRENT FLORIDA BUILDING CODE AND REFERENCED DESIGN SPECIFICATIONS.
8. GLASS MEETS THE REQUIREMENTS OF ASTM E 1300 GLASS CHARTS. SEE SHEET 2 FOR GLAZING DETAILS.

TABLE OF CONTENTS	
SHEET	SHEET DESCRIPTION
1	GENERAL NOTES
2	GLAZING DETAILS
3	DESIGN PRESSURE TABLE, ELEVATION & ANCHOR LAYOUT
4	VERTICAL SECTION
5	HORIZONTAL SECTION
6	INSTALLATION DETAIL & NOTES
7	BILL OF MATERIALS & COMPONENTS

OVERALL SIZE		DESIGN PRESSURE	IMPACT RATING
WIDTH	HEIGHT		
SEE SHEET 3		SEE SHEET 3	LARGE AND SMALL MISSILE IMPACT RATED



PORTELLA STEEL DOORS & WINDOWS
4111 TODD LN, SUITE 1000
AUSTIN, TX 78744
PH: (214)484-3134 FAX: (214)484-3357

TITLE:
ARTISAN SERIES AWNING WINDOW
(HVHZ)(IMPACT)

GENERAL NOTES

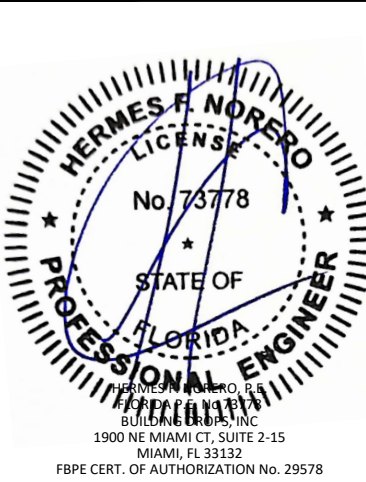
PREPARED BY:

BUILDING DROPS, INC.
1900 NE MIAMI CT, SUITE 2-15
MIAMI, FL 33132
PH: (954)399-8478
FAX: (954)744-4738
WEB: www.buildingdrops.com



REMARKS	BY	DATE

THIS DOCUMENT IS THE PROPERTY OF BUILDING DROPS, INC. AND SHALL NOT BE REPRODUCED IN WHOLE OR PART WITHOUT WRITTEN CONSENT OF BUILDING DROPS, INC. ALTERATIONS, ADDITIONS, HIGHLIGHTING, OR OTHER MARKINGS TO THIS DOCUMENT ARE NOT PERMITTED AND INVALIDATE OUR CERTIFICATION.



FL #:

FL46971

DATE: 08.01.24

DWG. BY:
RN

CHK. BY:
HFN

SCALE: NTS

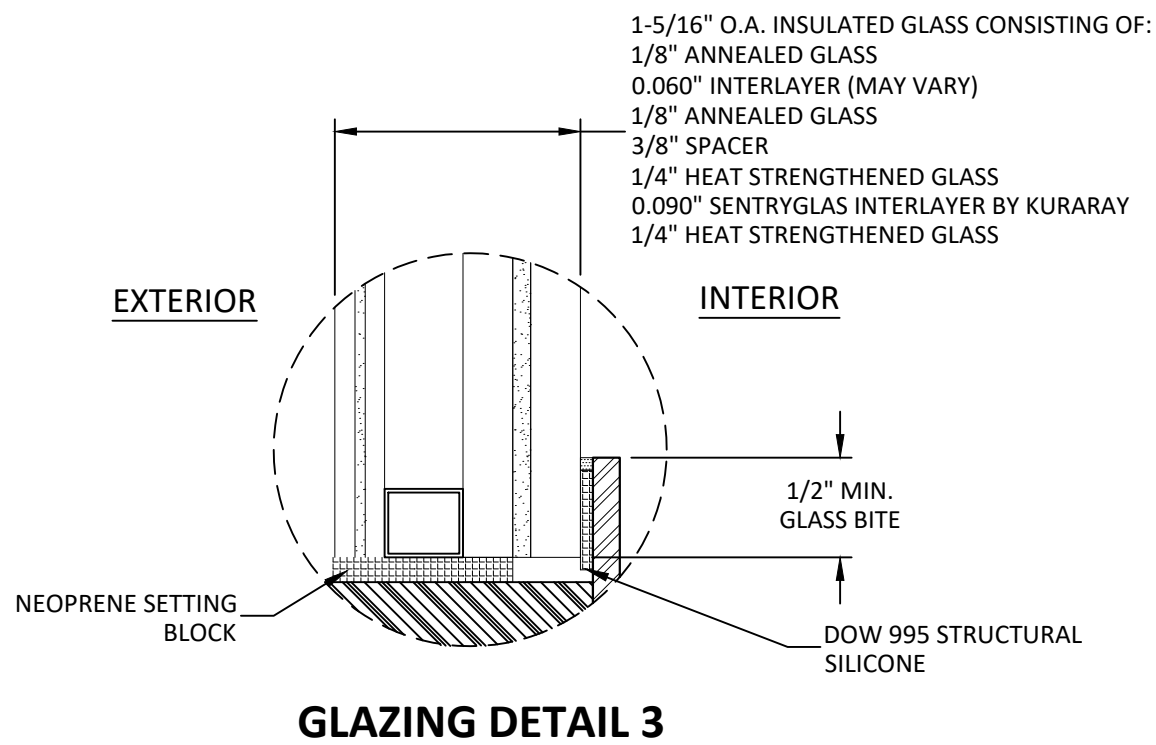
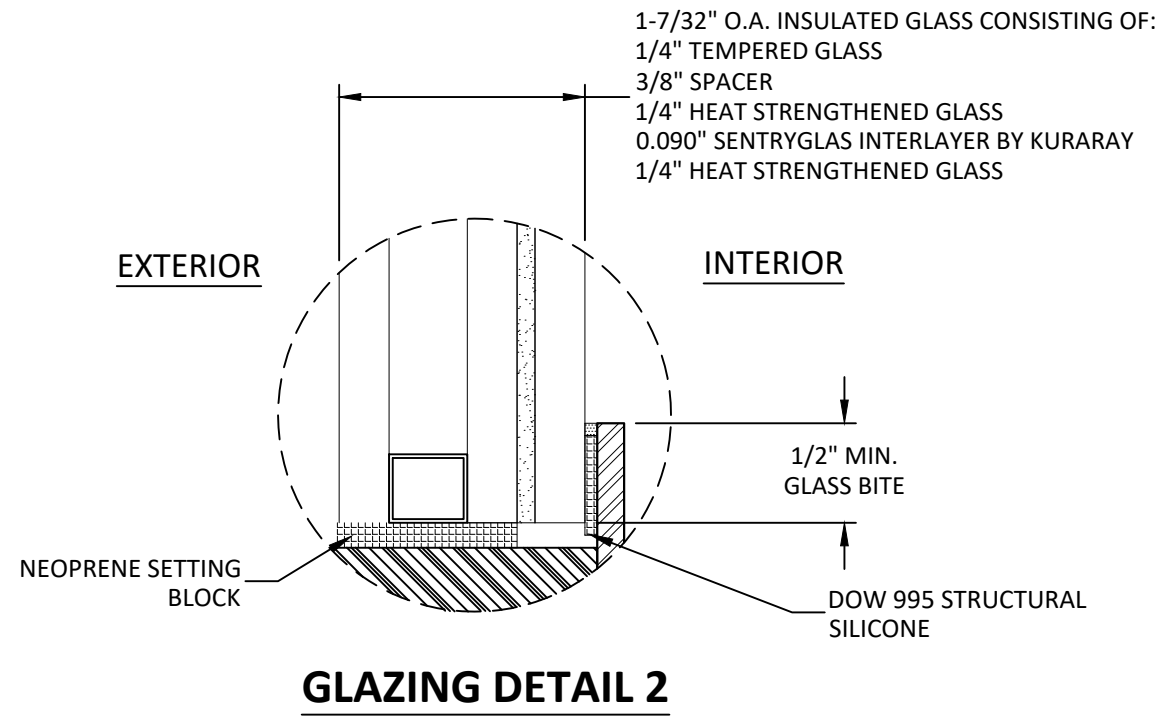
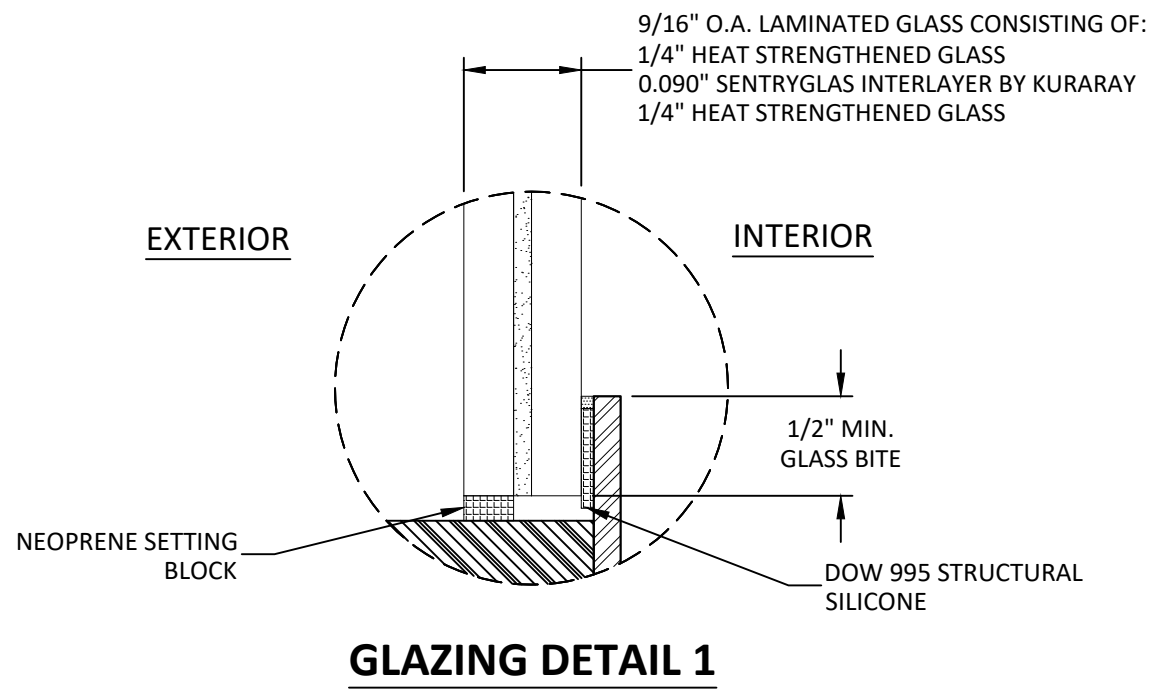
DWG. #: POR019

SHEET:

1

OF 7

c:\users\sebastianherrerros\building drops, inc\building drops landing - common\projects\portella steel doors & windows\fb-22-1052 - fbc submittal - awning window\dwgs\por019.dwg 8/22/2024 5:53 PM



GLAZING NOTES:

1. GLASS TYPE COMPLIES WITH ASTM E1300 AND THE FBC SAFETY GLAZING REQUIREMENTS. PER THE FBC TEMPER AND SAFETY GLAZING REQUIREMENTS SHALL BE REVIEWED ON A SITE SPECIFIC BASIS.
2. SETTING BLOCK DUROMETER HARDNESS OF 70-90 (SHORE A) AS REFERENCED IN FBC CHAPTER 24.
3. SETTING BLOCKS TO BE LOCATED AT 1/4 SPAN LENGTH FOR GLASS WIDER THAN 36" AS PER FBC CHAPTER 24.
4. D.L.O. AND DESIGN PRESSURES MAY NOT EXCEED MAX VALUES SHOWN HEREIN.
5. WINDOW WAS TESTED WITHOUT THE USE OF A GLAZING BEAD. GLAZING BEAD IS OPTIONAL AND NOT REQUIRED. SPACER MATERIAL MAY VARY AS WELL. EXTERIOR GLASS LITE HEAT TREATMENT MAY VARY AS WELL.



PORTELLA STEEL DOORS & WINDOWS
4111 TODD LN, SUITE 1000
AUSTIN, TX 78744
PH: (214)484-3134 FAX: (214)484-3357

TITLE: ARTISAN SERIES AWNING WINDOW
(HVHZ)/(IMPACT)

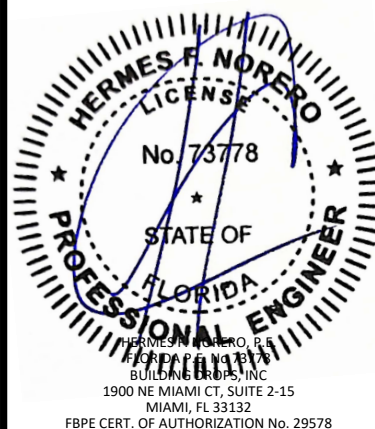
GLAZING DETAILS

PREPARED BY: BUILDING DROPS, INC.
1900 NE MIAMI CT, SUITE 2-15
MIAMI, FL 33132
PH: (954)399-8478
FAX: (954)744-4738
WEB: www.buildingdrops.com



REMARKS	BY	DATE

THIS DOCUMENT IS THE PROPERTY OF BUILDING DROPS, INC. AND SHALL NOT BE REPRODUCED IN WHOLE OR PART WITHOUT WRITTEN CONSENT OF BUILDING DROPS, INC. ALTERATIONS, ADDITIONS, HIGHLIGHTING, OR OTHER MARKINGS TO THIS DOCUMENT ARE NOT PERMITTED AND INVALIDATE OUR CERTIFICATION.



FL #:

FL46971

DATE: **08.01.24**

DWG. BY:
RN

CHK. BY:
HFN

SCALE: **NTS**

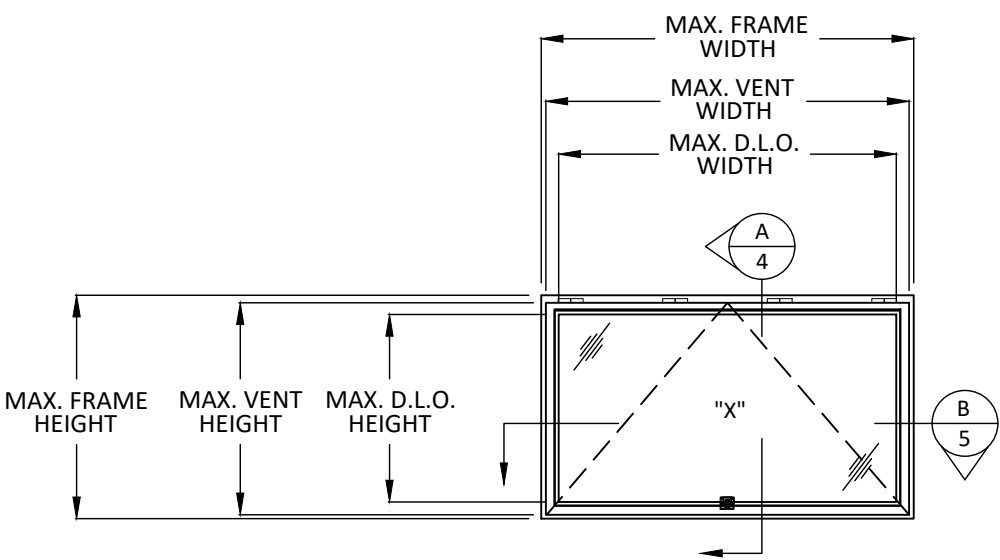
DWG. #: **POR019**

SHEET:

2

OF 7

c:\users\sebastianherrerros\building drops, inc\building drops, inc\projects\portella steel doors & windows\fbc-22-1052 - fbc submittal - awning window\dwgs\por019.dwg 8/22/2024 5:53 PM

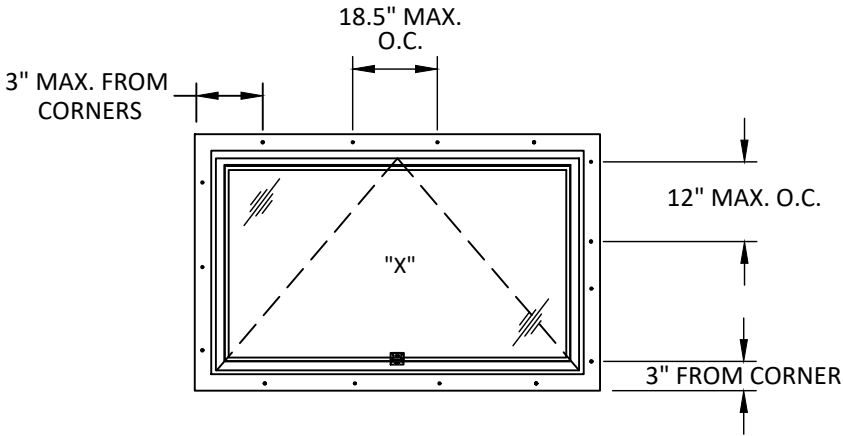


TYPICAL ELEVATION
AWNING WINDOW

SIZE NOTES:

VENT HEIGHT = FRAME HEIGHT - 1.75"
VENT WIDTH = FRAME WIDTH - 1.5"

D.L.O. HEIGHT = FRAME HEIGHT - 5.75"
D.L.O. WIDTH = FRAME WIDTH - 5.5"



ANCHOR LAYOUT
NAIL FIN INSTALLATION

DESIGN PRESSURE TABLE (PSF)			
NOMINAL DIMS.		EXT. (+)	INT. (-)
FRAME WIDTH (IN.)	FRAME HEIGHT (IN.)		
24	30	60.0	-65.0
30		60.0	-65.0
36		60.0	-65.0
42		60.0	-65.0
48		60.0	-65.0
54		60.0	-65.0
60		60.0	-65.0
66		60.0	-65.0
72		60.0	-65.0
24	36	60.0	-65.0
30		60.0	-65.0
36		60.0	-65.0
42		60.0	-65.0
48		60.0	-65.0
54		60.0	-65.0
60		60.0	-65.0
66		60.0	-65.0
72		60.0	-65.0
24	42	60.0	-65.0
30		60.0	-65.0
36		60.0	-65.0
42		51.4	-55.7
48		51.4	-55.7
54		51.4	-55.7
60		51.4	-55.7
66		51.4	-55.7
72		51.4	-55.7
24	48	60.0	-65.0
30		60.0	-65.0
36		60.0	-65.0
42		51.4	-55.7
48		51.4	-55.7
54		51.4	-55.7
60		51.4	-55.7
66		51.4	-55.7
72		51.4	-55.7



PORTELLA STEEL DOORS & WINDOWS
4111 TODD LN, SUITE 1000
AUSTIN, TX 78744
PH: (214)484-3134 FAX: (214)484-3357

TITLE:
ARTISAN SERIES AWNING WINDOW
(HVHZ)/(IMPACT)

DESIGN PRESSURE TABLE,
ELEVATION & ANCHOR LAYOUT

PREPARED BY:

BUILDING DROPS, INC.

1900 NE MIAMI CT, SUITE 2-15

MIAMI, FL 33132

PH: (954)399-8478

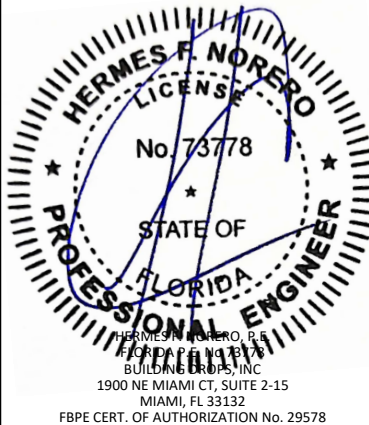
FAX: (954)744-4738

WEB: www.buildingdrops.com



REMARKS	BY	DATE

THIS DOCUMENT IS THE PROPERTY OF BUILDING DROPS, INC. AND SHALL NOT BE REPRODUCED IN WHOLE OR PART WITHOUT WRITTEN CONSENT OF BUILDING DROPS, INC. ALTERATIONS, ADDITIONS, HIGHLIGHTING, OR OTHER MARKINGS TO THIS DOCUMENT ARE NOT PERMITTED AND INVALIDATE OUR CERTIFICATION.



FL #:
FL46971

DATE: **08.01.24**

DWG. BY:
RN

CHK. BY:
HFN

SCALE: **NTS**

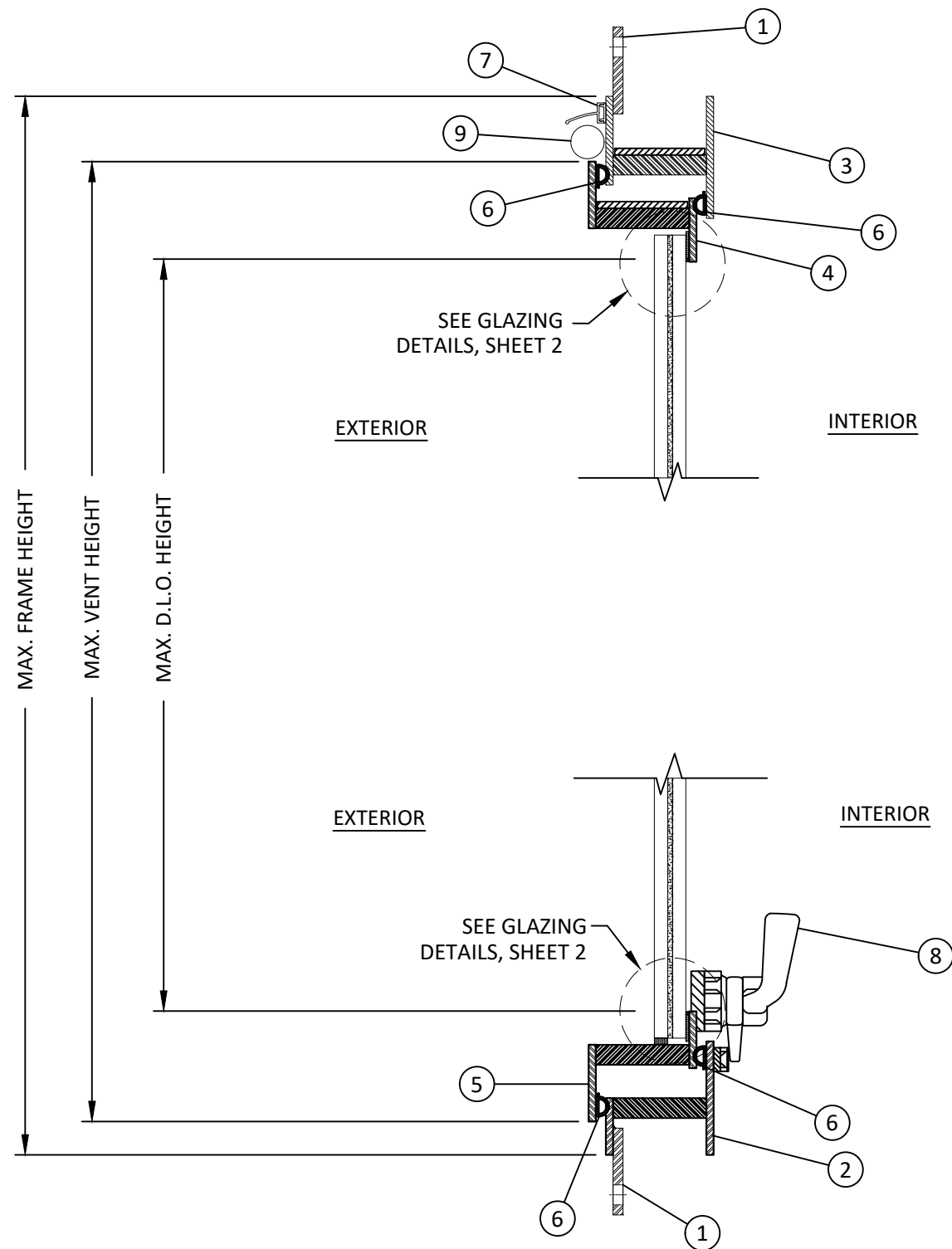
DWG. #: **POR019**

SHEET:

3

OF 7

c:\users\sebastianherrerros\building drops, inc\building drops landing - common\projects\portella steel doors & windows\fbc-22-1052 - fbc submittal - awning window\dwgs\por019.dwg 8/22/2024 5:53 PM



A
4 **VERTICAL SECTION**



PORTELLA STEEL DOORS & WINDOWS
4111 TODD LN, SUITE 1000
AUSTIN, TX 78744
PH: (214)484-3134 FAX: (214)484-3357

TITLE: ARTISAN SERIES AWNING WINDOW
(HVHZ/IMPACT)

VERTICAL SECTION

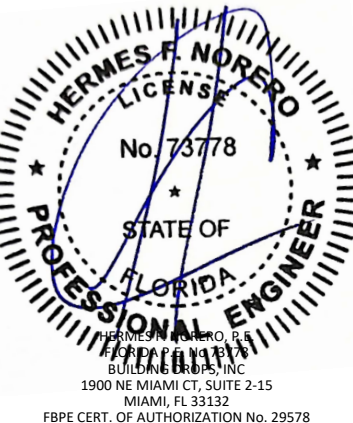
PREPARED BY: BUILDING DROPS, INC.

1900 NE MIAMI CT, SUITE 2-15
MIAMI, FL 33132
PH: (954)399-8478
FAX: (954)744-4738
WEB: www.buildingdrops.com



REMARKS	BY	DATE

THIS DOCUMENT IS THE PROPERTY OF BUILDING DROPS, INC. AND SHALL NOT BE REPRODUCED IN WHOLE OR PART WITHOUT WRITTEN CONSENT OF BUILDING DROPS, INC. ALTERATIONS, ADDITIONS, HIGHLIGHTING, OR OTHER MARKINGS TO THIS DOCUMENT ARE NOT PERMITTED AND INVALIDATE OUR CERTIFICATION.



FL #:

FL46971

DATE: **08.01.24**

DWG. BY: **RN**

CHK. BY: **HFN**

SCALE: **NTS**

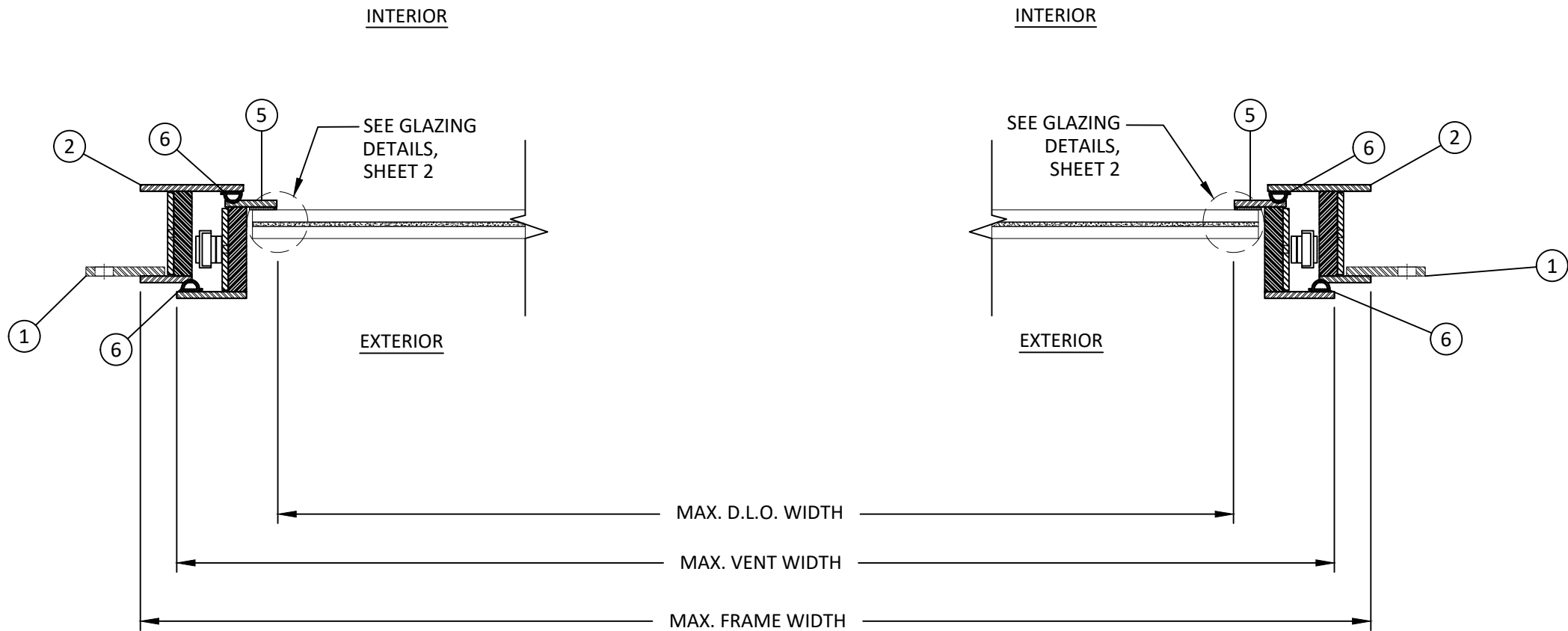
DWG. #: **POR019**

SHEET:

4

OF 7

c:\users\sebastianherrerros\building drops, inc\building drops landing - common\projects\portella steel doors & windows\fbc-22-1052 - fbc submittal - awning window\dwgs\por019.dwg 8/22/2024 5:53 PM



B
5 **HORIZONTAL SECTION**



PORTELLA STEEL DOORS & WINDOWS
4111 TODD LN, SUITE 1000
AUSTIN, TX 78744
PH: (214)484-3134 FAX: (214)484-3357

TITLE: ARTISAN SERIES AWNING WINDOW (HVHZ/IMPACT)

HORIZONTAL SECTION

PREPARED BY:

BUILDING DROPS, INC.

1900 NE MIAMI CT, SUITE 2-15
MIAMI, FL 33132

PH: (954)399-8478
FAX: (954)744-4738

WEB: www.buildingdrops.com



REMARKS	BY	DATE

THIS DOCUMENT IS THE PROPERTY OF BUILDING DROPS, INC. AND SHALL NOT BE REPRODUCED IN WHOLE OR PART WITHOUT WRITTEN CONSENT OF BUILDING DROPS, INC. ALTERATIONS, ADDITIONS, HIGHLIGHTING, OR OTHER MARKINGS TO THIS DOCUMENT ARE NOT PERMITTED AND INVALIDATE OUR CERTIFICATION.



FL #:

FL46971

DATE: 08.01.24

DWG. BY: RN	CHK. BY: HFN
-------------	--------------

SCALE: NTS

DWG. #: POR019

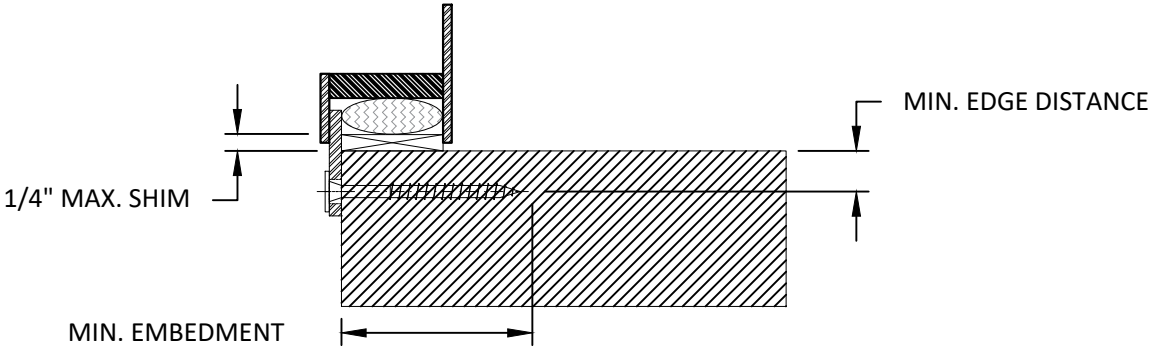
SHEET:

5

OF 7

c:\users\sebastianherrerros\building drops, inc\building drops landing - common\projects\portella steel doors & windows\fbc-22-1052 - fbc submittal - awning window\dwgs\por019.dwg 8/22/2024 5:53 PM

ANCHOR SCHEDULE				
METHOD	SUBSTRATE	ANCHOR TYPE	MIN. EMBEDMENT	MIN. EDGE DISTANCE
NAIL FIN	WOOD: MIN. SG = 0.55	#12 WOOD SCREW	1.5"	0.75"
	STEEL: MIN. 18 GAUGE, MIN. FY = 33 KSI	#12 SELF DRILLING OR SELF TAPPING SCREW	3 THREADS MIN. PENETRATION BEYOND METAL	0.50"
	METAL: ALUMINUM MIN. 18" THICKNESS. MIN. 6063-T5		3 THREADS MIN PENETRATION BEYOND METAL	0.50"



A
6

VERTICAL SECTION

SILL

NOTE: HEAD & JAMB SIMILAR

INSTALLATION NOTES:

- ONE INSTALLATION ANCHOR IS REQUIRED AT EACH ANCHOR LOCATION SHOWN.
- THE NUMBER OF INSTALLATION ANCHORS DEPICTED IS THE MINIMUM NUMBER OF ANCHORS TO BE USED FOR PRODUCT INSTALLATION.
- INSTALL INDIVIDUAL INSTALLATION ANCHORS WITHIN A TOLERANCE OF ± 1/2" INCH OF THE DEPICTED LOCATION IN THE ANCHOR LAYOUT DETAIL (I,E; WITHOUT CONSIDERATION OF TOLERANCES). TOLERANCES ARE NOT CUMULATIVE FROM ONE INSTALLATION ANCHOR TO THE NEXT.
- SHIM AS REQUIRED AS NEEDED TO ACHIEVE A PLUMB AND SQUARE INSTALLATION. MAXIMUM ALLOWABLE SHIM STACK TO BE 1/4". SHIM(S) SHALL BE CONSTRUCTED OF HIGH DENSITY PLASTIC OR BETTER.
- MINIMUM EMBEDMENT AND EDGE DISTANCE EXCLUDE WALL FINISHES, INCLUDING BUT NOT LIMITED TO STUCCO , FOAM, BRICK VENEER , AND SIDING.
- INSTALLATION ANCHORS AND ASSOCIATED HARDWARE MUST BE MADE OF CORROSION RESISTANT MATERIAL OR HAVE A CORROSION RESISTANT COATING.
- FOR HOLLOW BLOCK AND GROUT FILLED BLOCK, DO NOT INSTALL INSTALLATION ANCHORS INTO MORTAR JOINTS, EDGE DISTANCE IS MEASURED FROM FREE EDGE OF BLOCK OR EDGE OF MORTAR JOINT INTO FACE SHELL OF BLOCK.
- INSTALLATION ANCHOR SHALL BE INSTALLED IN ACCORDANCE WITH ANCHOR MANUFACTURER'S INSTALLATION INSTRUCTIONS, AND ANCHORS SHALL NOT BE USED IN SUBSTRATES WITH STRENGTHS LESS THAN THE MINIMUM STRENGTH SPECIFIED BY THE ANCHOR MANUFACTURER.
- INSTALLATION SHALL FOLLOW MANUFACTURERS RECOMMENDATIONS FOR SEALING AWNINGS AND ACCESSORY ITEMS.



PORTELLA STEEL DOORS & WINDOWS
4111 TODD LN, SUITE 1000
AUSTIN, TX 78744
PH: (214)484-3134 FAX: (214)484-3357

TITLE:
ARTISAN SERIES AWNING WINDOW
(HVHZ)/(IMPACT)

INSTALLATION DETAIL & NOTES

PREPARED BY:

BUILDING DROPS, INC.

1900 NE MIAMI CT, SUITE 2-15

MIAMI, FL 33132

PH: (954)399-8478

FAX: (954)744-4738

WEB: www.buildingdrops.com



REMARKS	BY	DATE

THIS DOCUMENT IS THE PROPERTY OF BUILDING DROPS, INC. AND SHALL NOT BE REPRODUCED IN WHOLE OR PART WITHOUT WRITTEN CONSENT OF BUILDING DROPS, INC. ALTERATIONS, ADDITIONS, HIGHLIGHTING, OR OTHER MARKINGS TO THIS DOCUMENT ARE NOT PERMITTED AND INVALIDATE OUR CERTIFICATION.



FL #:

FL46971

DATE: 08.01.24

DWG. BY:
RN

CHK. BY:
HFN

SCALE: NTS

DWG. #: POR019

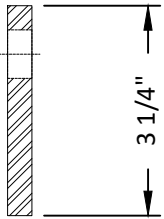
SHEET:

6

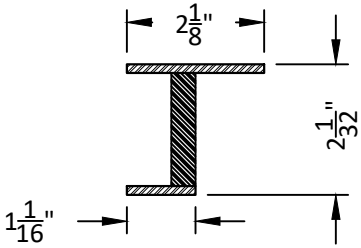
OF 7

BILL OF MATERIALS			
ITEM	PART NO.	DESCRIPTION	MATERIAL
1	-	FLANGE	SAE 304
2	14	JAMBS/SILL	SAE 304/FRP
3	14 CUSTOM	HEAD	SAE 304/FRP
4	03	TOP RAIL	SAE 304/FRP
5	13	BOTTOM RAIL/STILE	SAE 304/FRP
6	-	GASKET	EPDM
7	-	DRIP CAP	6063-T5
8	LC300	CASEMENT LATCH	STEEL
9	-	ADJUSTABLE HINGE	STEEL
10	-	SUPPORT ARM	STEEL

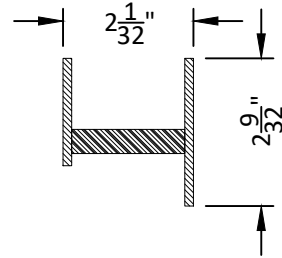
1 FLANGE
SAE 304



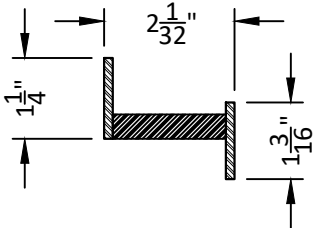
2 JAMBS / SILL
SAE 304 / FRP



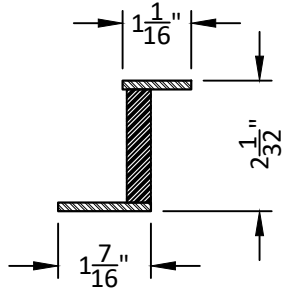
3 HEAD
SAE 304 / FRP



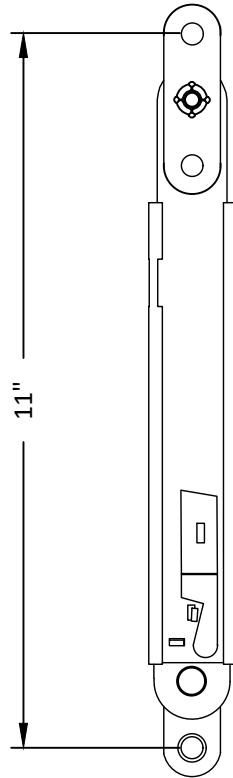
4 TOP RAIL
SAE 304 / FRP



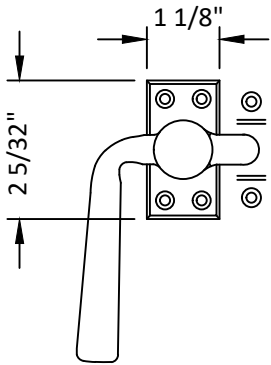
5 BOTTOM RAIL/STILE
SAE 304 / FRP



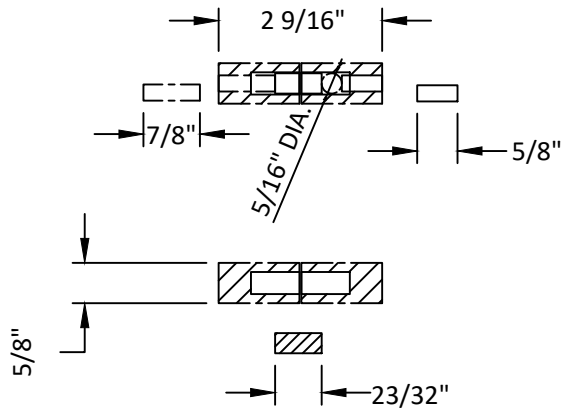
10 SUPPORT ARM
STEEL



8 CASEMENT LATCH
STEEL



9 ADJUSTABLE HINGE
STEEL



PORTELLA STEEL DOORS & WINDOWS
4111 TODD LN, SUITE 1000
AUSTIN, TX 78744
PH: (214)484-3134 FAX: (214)484-3357

TITLE:
ARTISAN SERIES AWNING WINDOW
(HVHZ)/(IMPACT)

BILL OF MATERIAL & COMPONENTS

PREPARED BY:

BUILDING DROPS, INC.
1900 NE MIAMI CT, SUITE 2-15
MIAMI, FL 33132
PH: (954)399-8478
FAX: (954)744-4738
WEB: www.buildingdrops.com



REMARKS	BY	DATE

THIS DOCUMENT IS THE PROPERTY OF BUILDING DROPS, INC. AND SHALL NOT BE REPRODUCED IN WHOLE OR PART WITHOUT WRITTEN CONSENT OF BUILDING DROPS, INC. ALTERATIONS, ADDITIONS, HIGHLIGHTING, OR OTHER MARKINGS TO THIS DOCUMENT ARE NOT PERMITTED AND INVALIDATE OUR CERTIFICATION.



FL #:	FL46971
DATE:	08.01.24
DWG. BY:	CHK. BY:
RN	HFN
SCALE:	NTS
DWG. #:	POR019
SHEET:	7