



# LITECON CLADDING 2"

INSTALLATION GUIDE FOR CLADDING

NOVEMBER 2022

# INDEX

---

INDEX	02
INSTALLATION GUIDELINES	03
BEFORE STARTING	04
LITECON CLADDING DIMENSIONS	05
TYPICAL WOOD STUD FRAME	06
BRICK LEDGE OR STEEL ANGLE	07
WALL ASSEMBLY	08
WALL ASSEMBLY 3D	09
LITECON CLADDING INSTALLATION - FIRST ROW	10
WALLS - SUBSEQUENT ROWS	11
WALLS - FASTENERS DISTRIBUTION	12
FASTENER SPECIFICATION FOR WOOD STUD AND METAL STUD	13
CEILING FINISHES	14
WINDOWS & DOORS	15
DRILLINGS - WALLS	16
FINAL STEPS - FIBERGLASS MESH	17
FINAL STEPS - FINISHES	18
FAQ'S	19
PLACEMENT OF ADDITIONAL STUD WHEN THE EDGE OF THE PANEL IS NOT ALIGNED WITH A STUD	20
CRACKS REPAIRING	21
FISSURE REPAIRING	22
CROOKED CORNER REPAIRING	23

---

## INSTALLATION GUIDELINES

**EXPANSION JOINTS:**

YOU DO NOT NEED EXPANSION JOINTS DUE TO THE MATERIAL'S PROPERTIES AND FASTENING DISTANCES.

**CONTROL / MOVEMENT JOINTS:**

ARE DEFINED ACCORDING TO LOCAL, JURISDICTION, SOIL / FOUNDATIONS PERFORMANCE, GENERAL CONTRACTOR, ARCHITECT AND ENGINEER OF THE PROJECT.

THE FOLLOWING DRAWINGS ASSEMBLIES AND CONSTRUCTION DETAILS ARE FOR ILLUSTRATION PURPOSES ONLY.

CONSULT DESIGN AUTHORITY AND CONFIRM COMPLIANCE CODE. LITECON DOES NOT PROVIDE DESIGN SERVICES.

CHECK PLUMB AND ALIGNMENT OF JOIST OR RAFTER SUPPORTS.

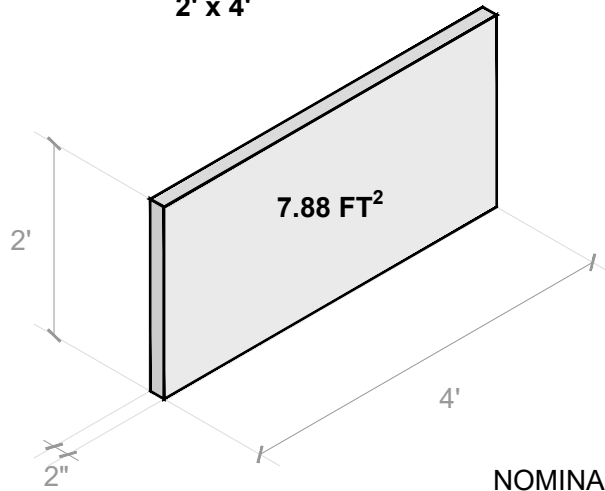
## BEFORE STARTING

- 
- 1.- BLUEPRINTS
  - 2.- HOUSE WRAP AS WEATHER BARRIER
  - 3.- BRICK LEDGE OR COATED STEEL ANGLE OR STAINLESS STEEL ANGLE 2" x 2"
  - 4.- LITECON CLADDING
  - 5.- LITECON ADHESIVE
  - 6.- LIQUID FLASHING
  - 7.- WALL OPENING WEEPS
  - 8.- #10 3 1/2" FASTENERS: THE TIP WILL DEPEND ON THE STUD (WOOD OR STEEL). IN BOTH CASES THE FASTENER SHOULD HAVE A COATING THAT PROVIDES CORROSION RESISTANCE
  - 9.- FIBERGLASS MESH
  - 10.- TAP WATER
  - 11.- ELECTRIC POWER 110/220V
  - 12.- A 5 GAL. EMPTY BUCKET
  - 13.- GROUT MIXING PADDLE
  - 14.- ELECTRIC DRILL
  - 15.- BATTERY SCREWDRIVER
  - 16.- RUBBER HAMMER
  - 17.- BUBBLE OR LASER KNIFE
  - 18.- JOINT KNIFE
  - 19.- CIRCULAR SAW
  - 20.- 7" DIAMOND TURBO BLADE
  - 21.- BACKER ROD FOR WINDOWS
  - 22.- SILICONE WATERPROOF FOR WINDOWS
-

## LITECON CLADDING DIMENSIONS

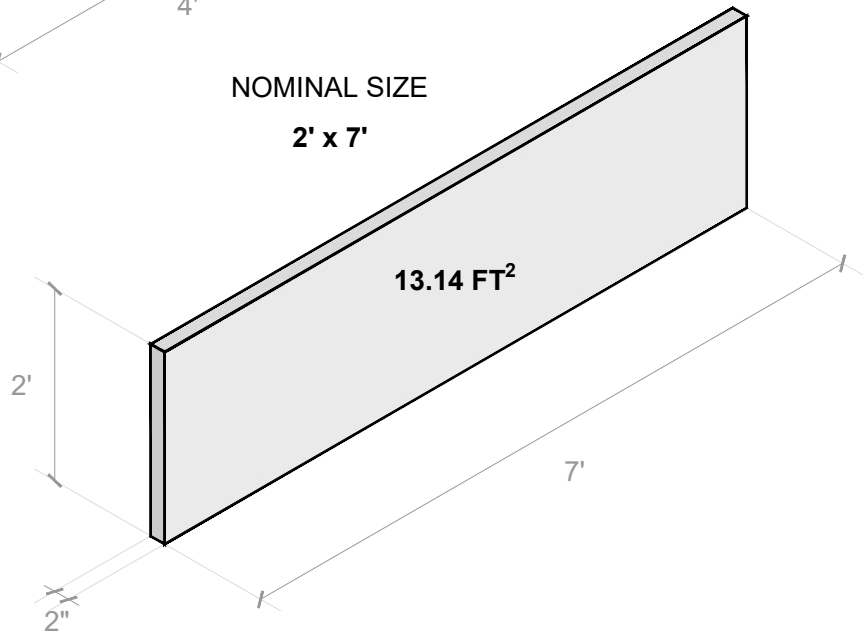
NOMINAL SIZE

**2' x 4'**



NOMINAL SIZE

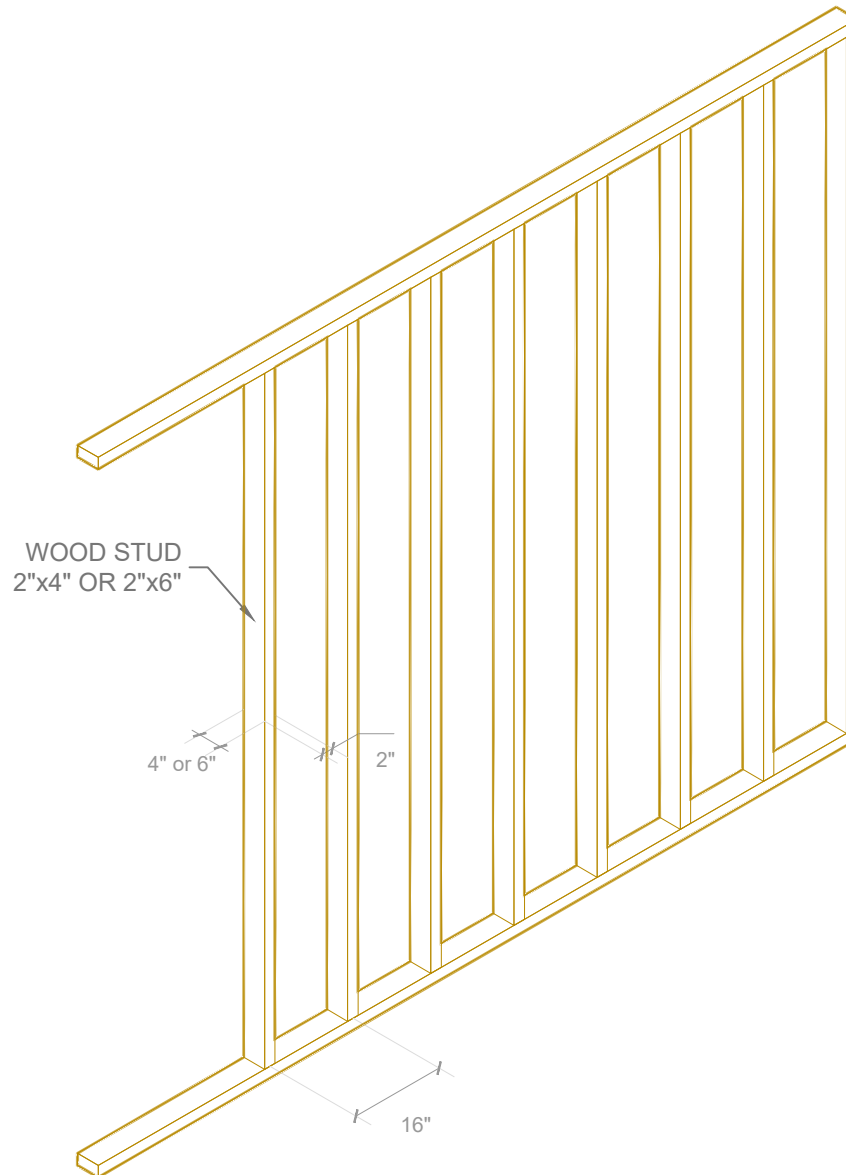
**2' x 7'**



### NOTES

1. LENGTH CAN BE ADJUSTED TO CUSTOMERS NEEDS (EVERY 0.2 INCHES) UP TO 120"
2. THE NOMINAL SIZE OF THE LITECON CLADDING IS 2' X 4', THE ACTUAL SIZE IS 23.62" X 48.03"
3. THE NOMINAL SIZE OF THE LITECON CLADDING IS 2' X 7', THE ACTUAL SIZE IS 23.62" X 80.11"

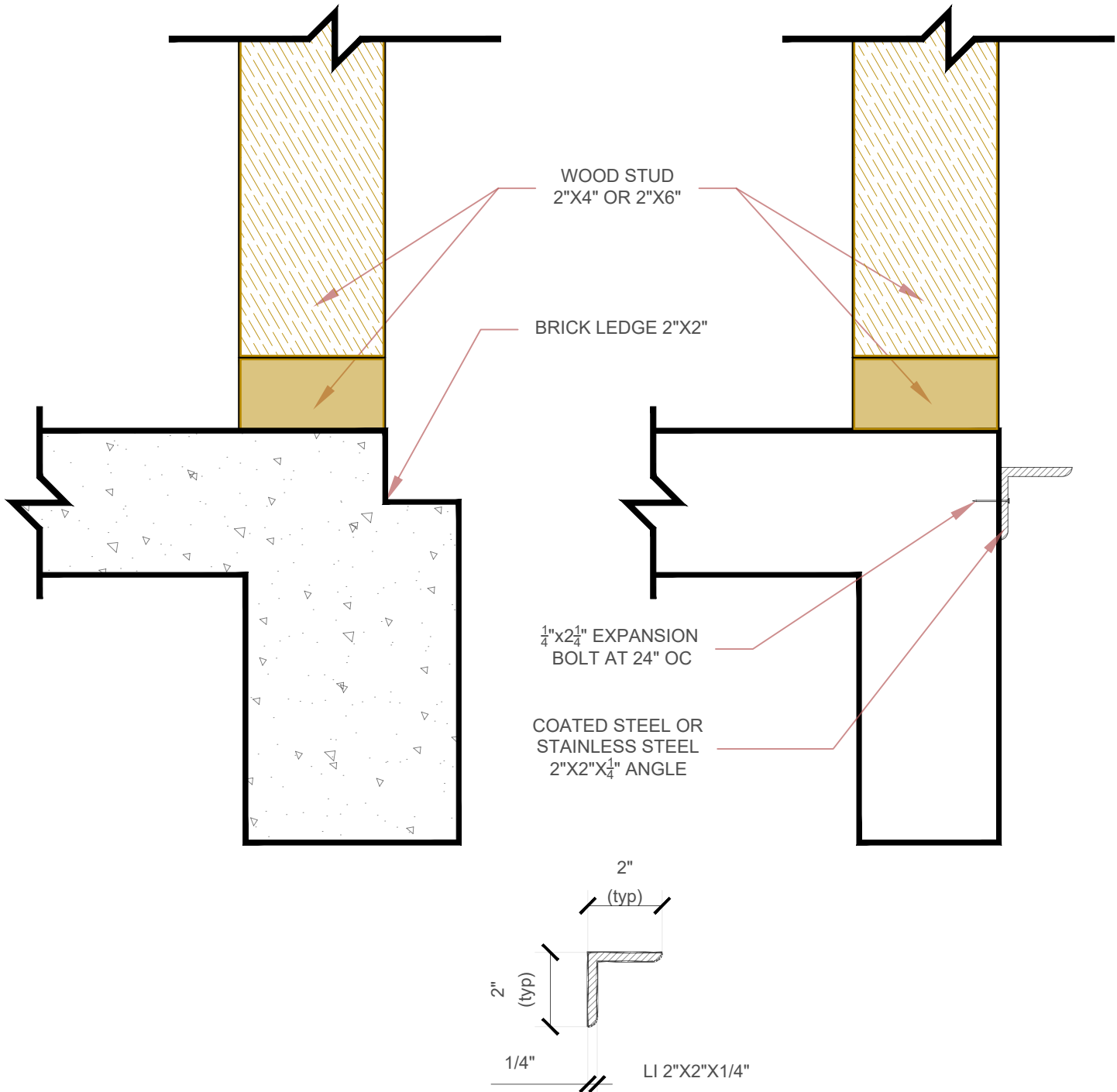
## TYPICAL WOOD STUD FRAME



### NOTES

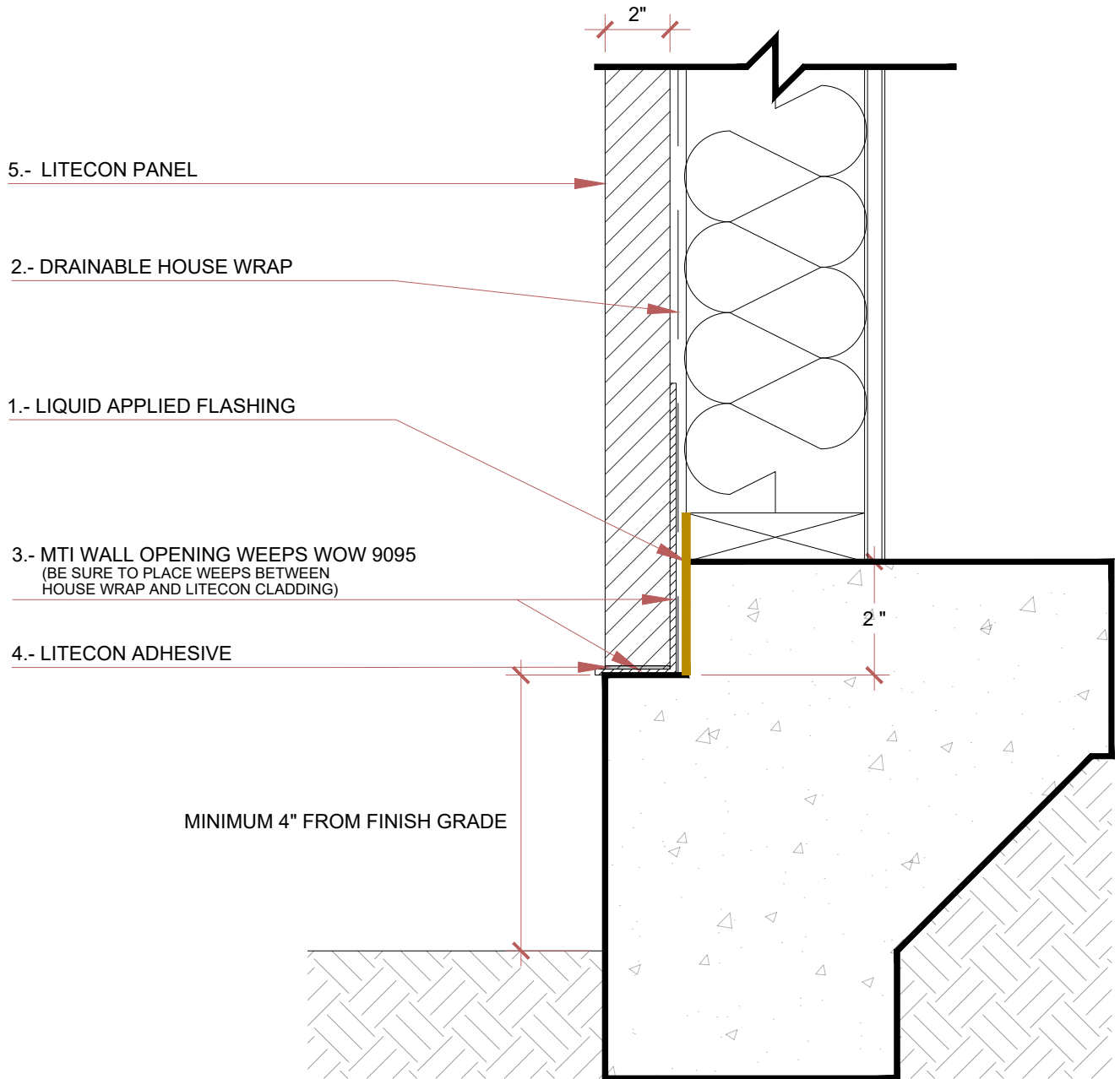
1. THE NOMINAL SIZE OF FRAMING STUD IS 2" X 4", THE ACTUAL MEASURE IS 1 ½" X 3 ½"
2. THE NOMINAL SIZE OF FRAMING STUD IS 2" X 6", THE ACTUAL MEASURE IS 1 ½" X 5 ½"

## BRICK LEDGE OR STEEL ANGLE



NOTES

## WALL ASSEMBLY

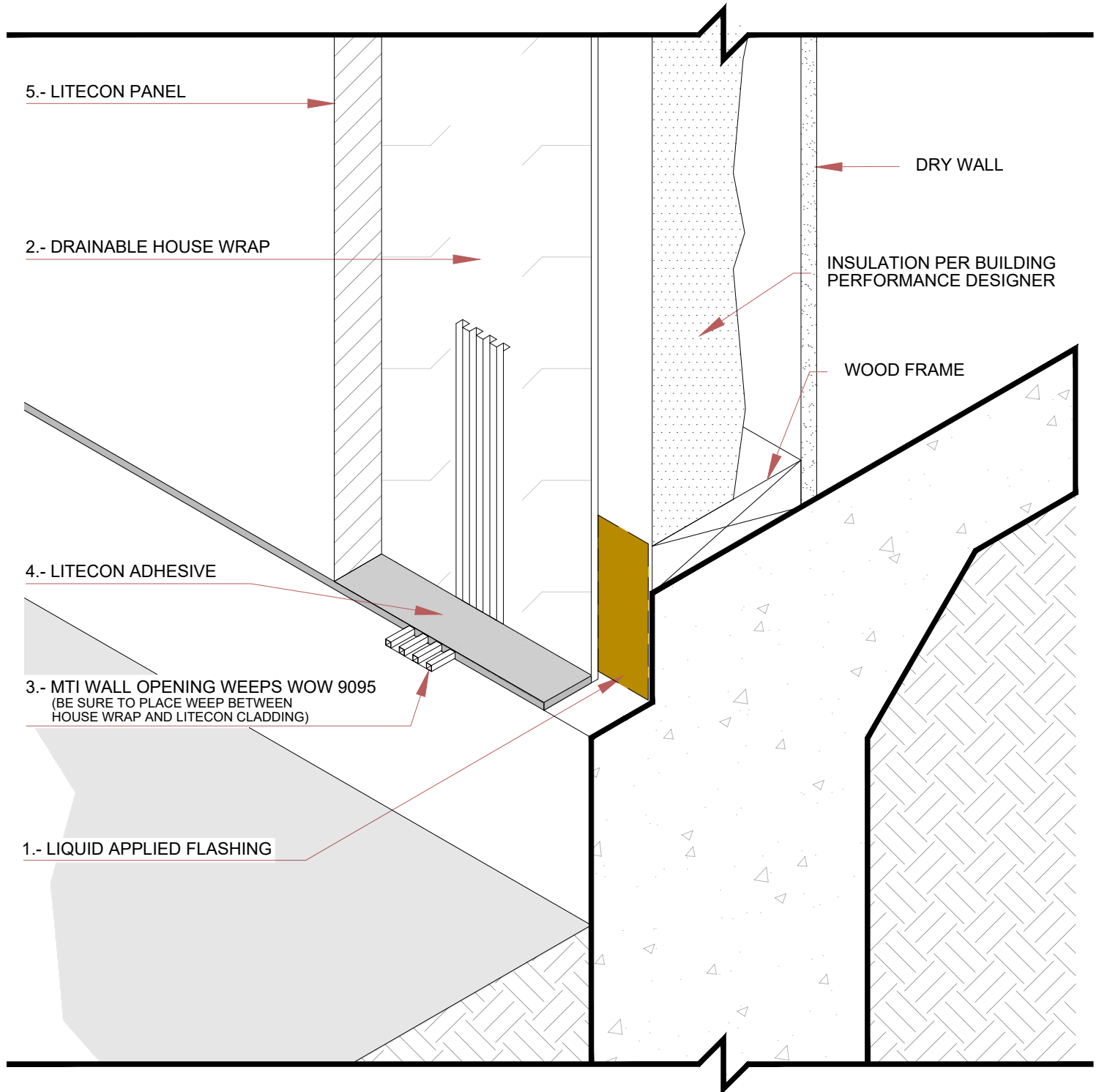


### NOTES

1. LIQUID FLASHING. CHECK MANUFACTURER'S INSTALLATION GUIDELINES
2. TAMLINWRAP OR DUPONT DRAINABLE WRAP ARE RECOMMENDED AS A WEATHER BARRIER. CHECK MANUFACTURER'S INSTALLATION GUIDELINES  
DRAINABLE WRAP MUST BE INSTALLED WITH DRAINABLE PATTERN FACING LITECON CLADDING. CHECK MANUFACTURER'S INSTALLATION GUIDELINES
3. MTIDRY WALL OPENING WEEP WOW 9095 IS RECOMMENDED. CHECK MANUFACTURER'S INSTALLATION GUIDELINES  
WE RECOMMEND 1 WALL OPENING WEEP PER PANEL 2'X4' OR TWO WEEPS PER PANEL 2'X7'  
MTIDRY WALL OPENING WEEP SHOULD **NOT BE CUT UNTIL AFTER THE FINAL FINISH HAS BEEN APPLIED**
4. LITECON ADHESIVE CAN BE USED FOR LEVELING. THE LEVELING THICKNESS RANGE IS  $\frac{3}{16}$ " TO 1"



## WALL ASSEMBLY 3D



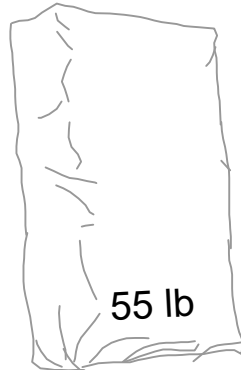
### NOTES

- 1.- LIQUID FLASHING. CHECK MANUFACTURER'S INSTALLATION GUIDELINES
- 2.- TAMLINWRAP OR DUPONT DRAINABLE WRAP ARE RECOMMENDED AS A WEATHER BARRIER. CHECK MANUFACTURER'S INSTALLATION GUIDELINES  
DRAINABLE WRAP MUST BE INSTALLED WITH DRAINABLE PATTERN FACING LITECON CLADDING. CHECK MANUFACTURER'S INSTALLATION GUIDELINES
- 3.- MTIDRY WALL OPENING WEEP WOW 9095 IS RECOMMENDED. CHECK MANUFACTURER'S INSTALLATION GUIDELINES  
WE RECOMMENDED 1 WALL OPENING WEEP PER PANEL 2'X4' OR TWO WEEPS PER PANEL 2'X7'  
MTIDRY WALL OPENING WEEP SHOULD NOT BE CUT UNTIL AFTER THE FINAL FINISH
- 4.- LITECON ADHESIVE CAN BE USED FOR LEVELING. THE LEVELER THICKNESS RANGE IS  $\frac{1}{16}$ " TO 1"

## FIRST ROW AND ADHESIVE APPLICATION

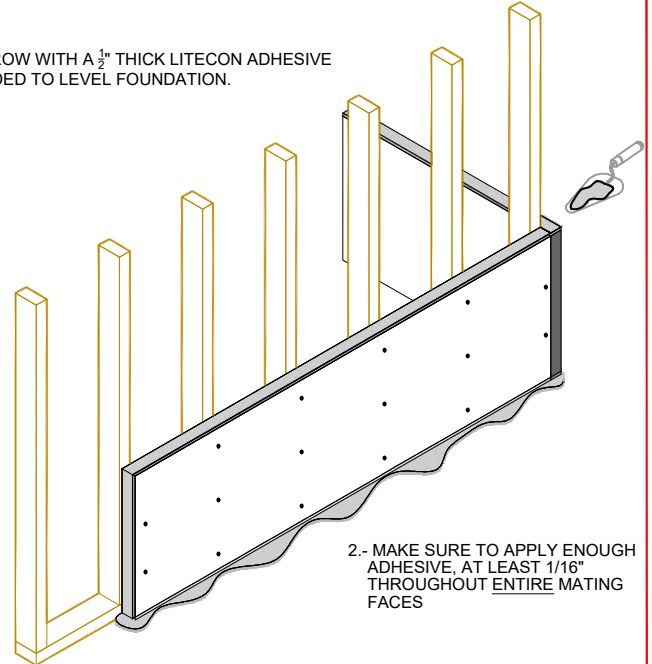


+



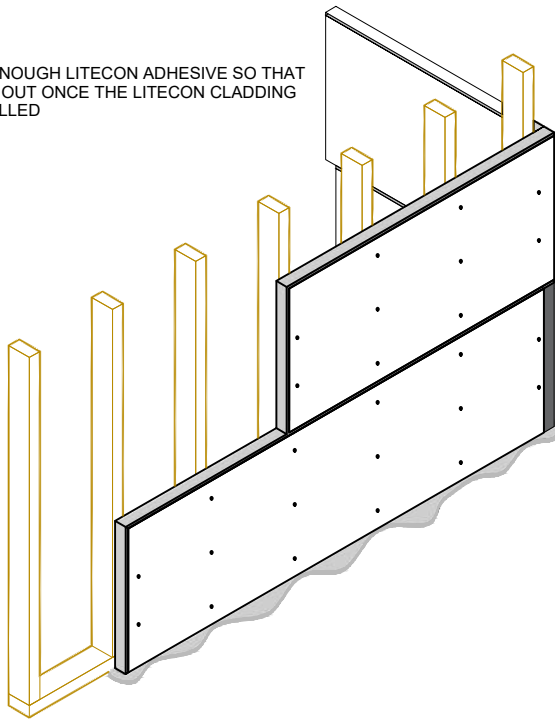
MIX 4/5 gal OF WATER FOR EACH 55 lb OF LITECON ADHESIVE. MIX TO OBTAIN A UNIFORM WORKABLE CONSISTENCY WITH NO CLUMPS. LET REST FOR 5 MINUTES, MIX AGAIN AND APPLY

1.- SET FIRST ROW WITH A  $\frac{1}{2}$ " THICK LITECON ADHESIVE OR AS NEEDED TO LEVEL FOUNDATION.



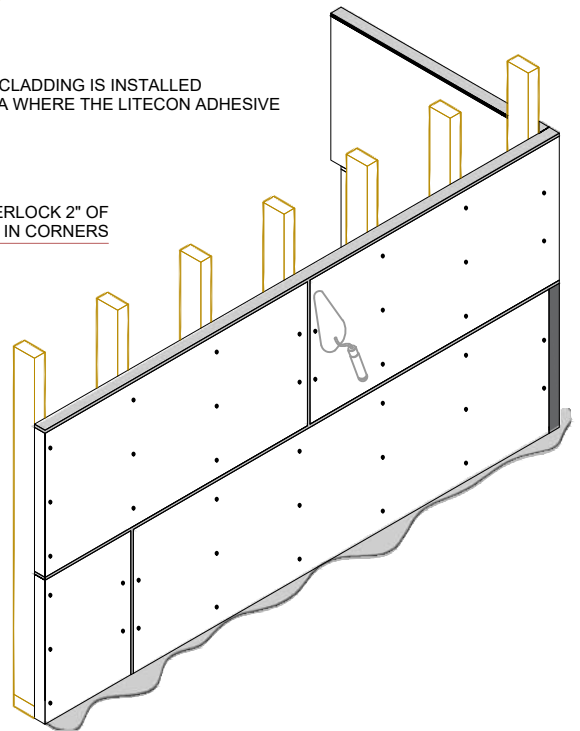
2.- MAKE SURE TO APPLY ENOUGH ADHESIVE, AT LEAST  $\frac{1}{16}$ " THROUGHOUT ENTIRE MATING FACES

3.- APPLY ENOUGH LITECON ADHESIVE SO THAT IT SPITS OUT ONCE THE LITECON CLADDING IS INSTALLED



4.- AFTER THE LITECON CLADDING IS INSTALLED SMOOTHEN THE AREA WHERE THE LITECON ADHESIVE SPAT OUT

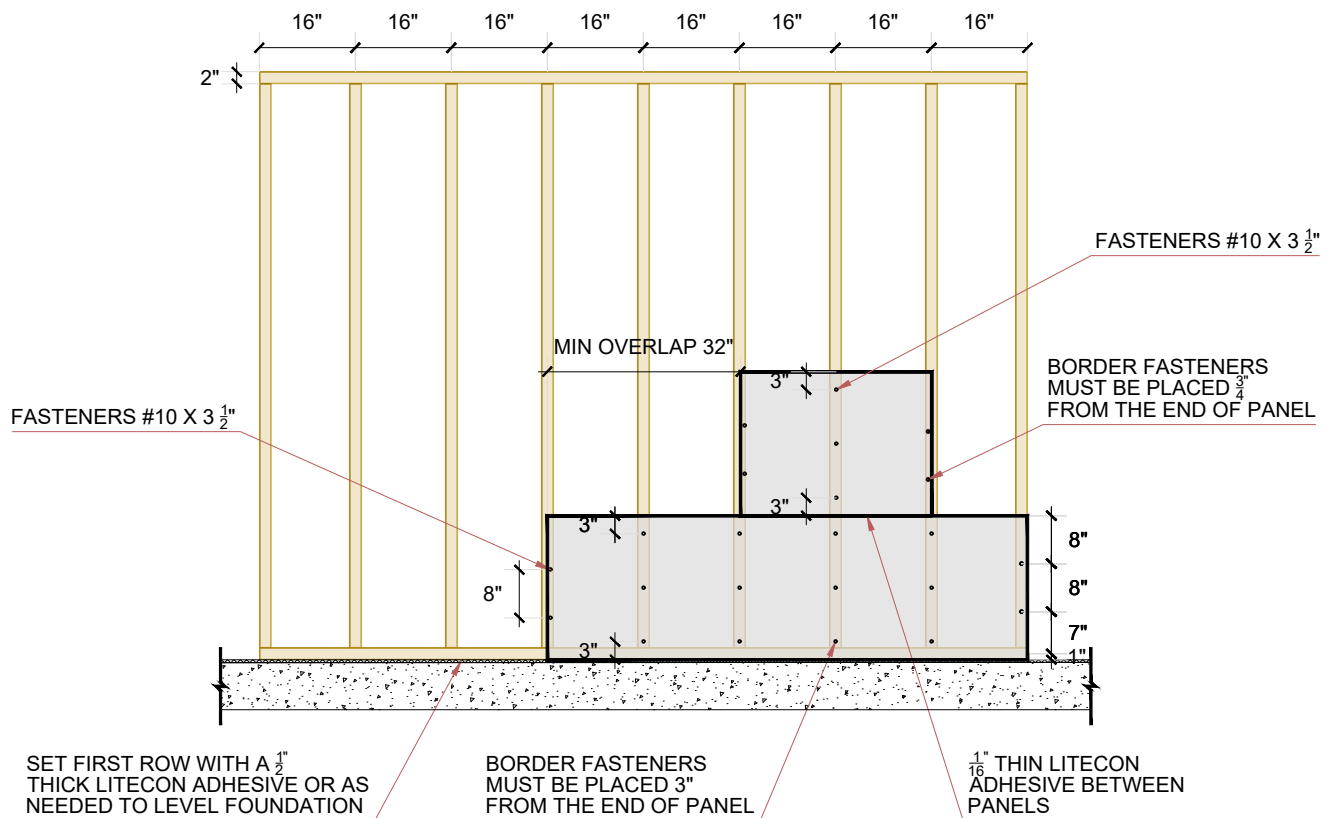
BE SURE TO INTERLOCK 2" OF PANEL IN CORNERS



### NOTES

- 1.- LEVEL FIRST ROW WITH LITECON ADHESIVE
- 2.- **MAKE SURE TO APPLY ENOUGH ADHESIVE, AT LEAST  $\frac{1}{16}$ " THROUGHOUT THE ENTIRE MATING FACES**
- 3.- BE SURE TO **INTERLOCK 2"** OF PANEL IN CORNERS
- 4.- WHEN DRILLING THROUGH THE PANELS, MAKE SURE THE SCREW ENTERS THE WOOD STUD
- 5.- FASTENERS HEADS MUST BE COUNTERSUNK  $\frac{1}{2}$ " INTO THE PANEL
- 6.- FILL THE  $\frac{1}{2}$ " GAP GENERATED BY THE FASTENER WITH LITECON ADHESIVE TO PREVENT WATER INTRUSION TO THE STUD
- 7.- ALLOW LITECON ADHESIVE TO DRY FOR A MINIMUM OF 24 HOURS PRIOR TO APPLYING ANY LOAD
- 8.- ONCE THE ADHESIVE IS MADE OR MIXED WITH WATER IT SHOULD BE USED WITHIN A MAXIMUM OF 30 MINUTES

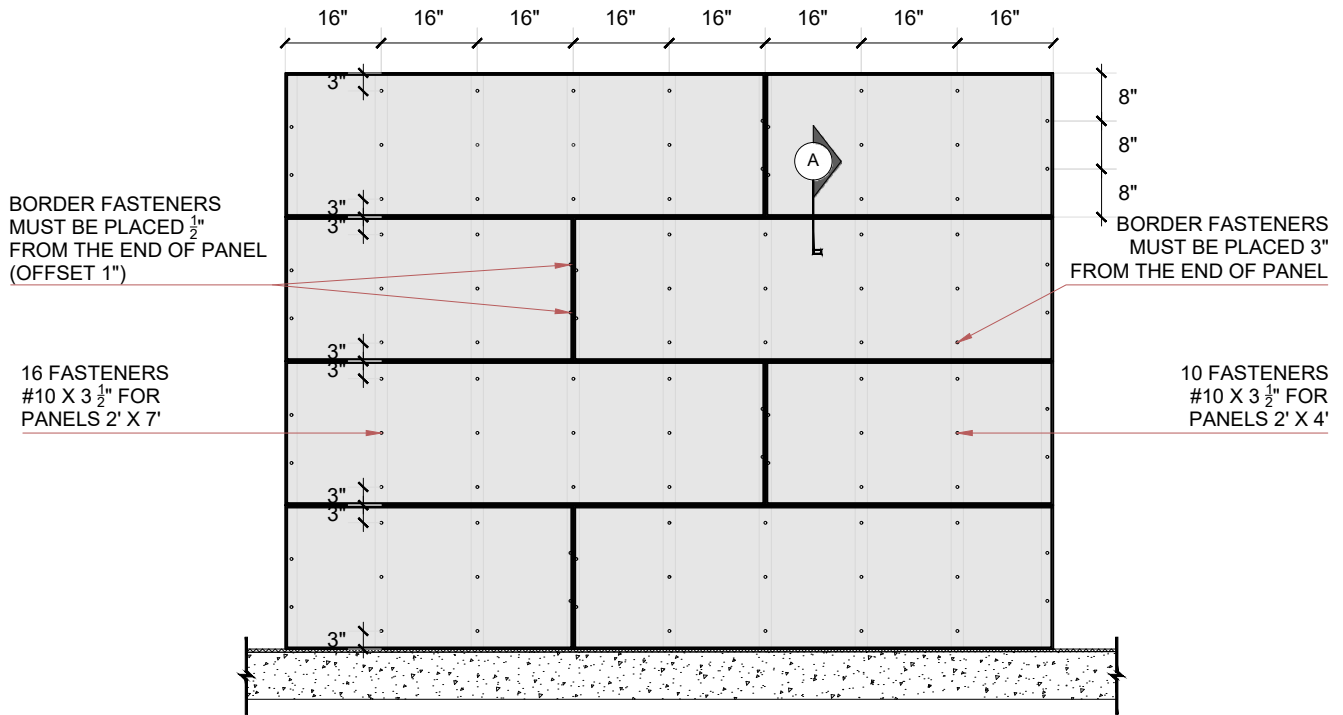
### SUBSEQUENT ROW



#### NOTES

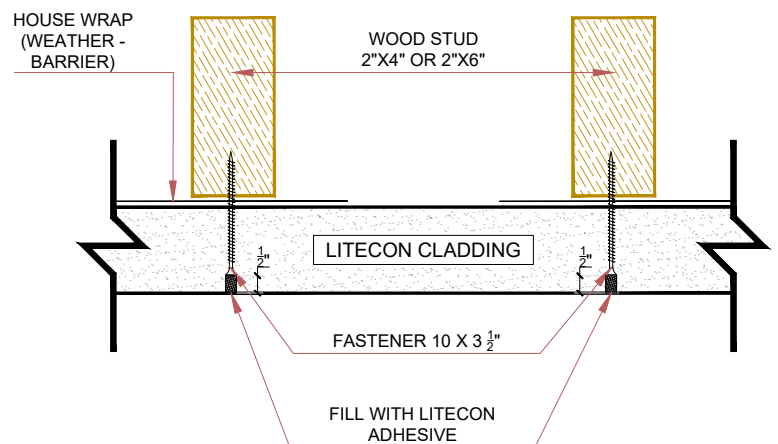
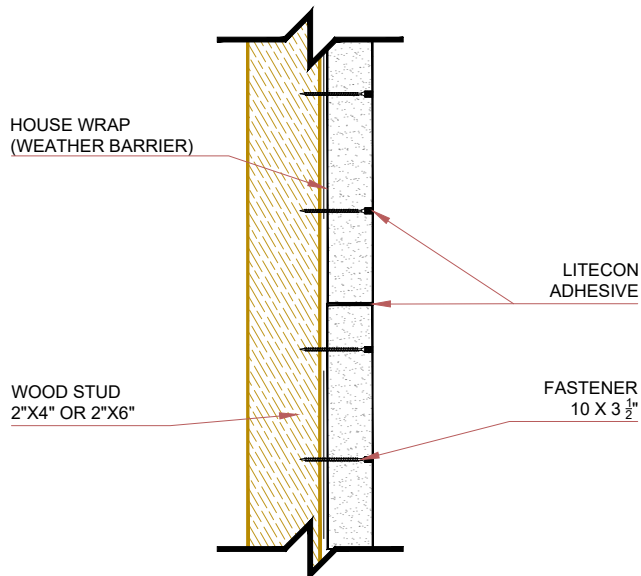
- 1.- THE 2' X 4' PANEL MUST BE INSTALLED WITH 10 FASTENERS
- 2.- THE 2' X 7' PANEL MUST BE INSTALLED WITH 16 FASTENERS
- 3.- **MAKE SURE TO APPLY ENOUGH ADHESIVE, AT LEAST 1/16" THROUGHOUT THE ENTIRE MATING FACES**
- 4.- BE SURE TO INTERLOCK 2" OF PANEL IN CORNERS
- 5.- WHEN DRILLING THROUGH THE PANELS, MAKE SURE THE SCREW ENTERS THE WOOD STUD
- 6.- FASTENERS HEADS MUST BE COUNTERSUNK 1/2" INTO THE PANEL
- 7.- FILL THE 1/2" GAP GENERATED BY THE FASTENER WITH LITECON ADHESIVE TO PREVENT WATER INTRUSION TO THE STUD

## FASTENERS DISTRIBUTION



### SECTION A

### DETAIL

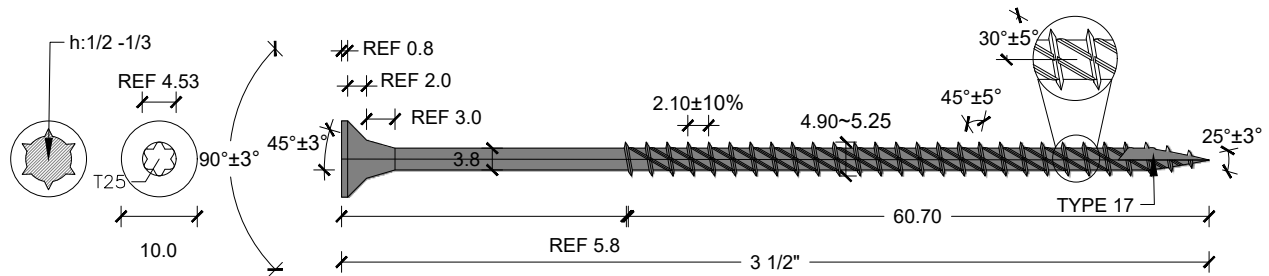


#### NOTES

- 1.- THE 2' X 4' PANEL MUST BE INSTALLED WITH 10 FASTENERS
- 2.- THE 2' X 7' PANEL MUST BE INSTALLED WITH 16 FASTENERS
- 3.- WHEN DRILLING THROUGH THE PANELS, MAKE SURE THE SCREW ENTERS THE WOOD STUD
- 4.- FASTENERS HEADS MUST BE COUNTERSUNK  $\frac{1}{2}$ " INTO THE PANEL
- 5.- FILL THE  $\frac{1}{2}$ " GAP GENERATED BY THE FASTENER WITH LITECON ADHESIVE TO PREVENT WATER INTRUSION TO THE STUD

## FASTENER SPECIFICATION FOR WOOD STUD AND METAL STUD

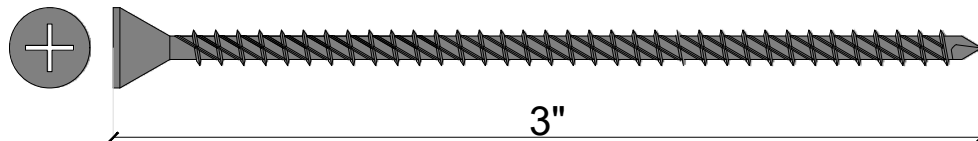
### #10 X 3 1/2" SELF DRILLING, PHILLIPS COUNTERSUNK



### FASTENER FOR WOOD STUD

Material	AISI 1016- 1024
Torsional Strength	61 lb-in min.
Shear Strength	1200 lbs min.
Pullout (plywood)	>340 psi.

### #8 X 3" SELF DRILLING, PHILLIPS COUNTERSUNK



### FASTENER FOR METAL STUD

#### Premium Ceramic - Star Drive

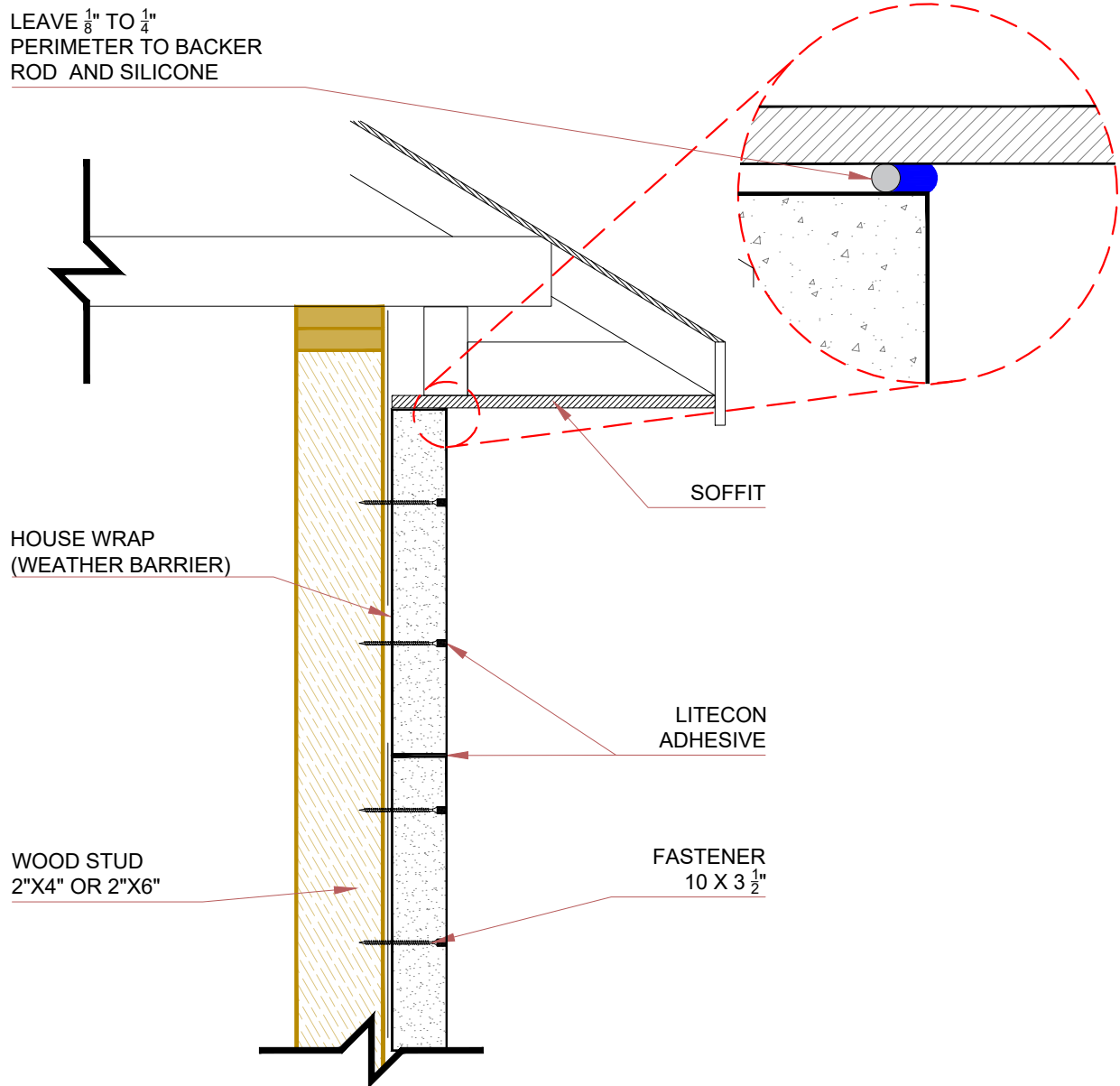
Dual Coarse Thread, Gold, Type 17 Point  
1000 Hour Long Life Ceramic Coating and heavy gauge for tough jobs.  
Dual thread design to greatly reduce splitting. Positive drives every time.  
Virtually eliminates need for pre-drilling.  
Counter-sunk head with nibs for a clean finish.  
For exterior use including decks, railings and other projects where rust resistance is important.

Material	C1018 Steel
Torsional Strength	56kg-cm min.
Shear Strength	1200 lbs min.
Pullout (plywood)	>340 psi.

#### NOTES

1. THE FASTENERS SHOULD HAVE A COATING THAT PROVIDES CORROSION RESISTANCE
2. THE FASTENERS SHOULD HAVE A TYPE T17 POINT FOR WOOD STUD
3. THE FASTENERS SHOULD HAVE A TYPE T25 STAR FLAT HEAD

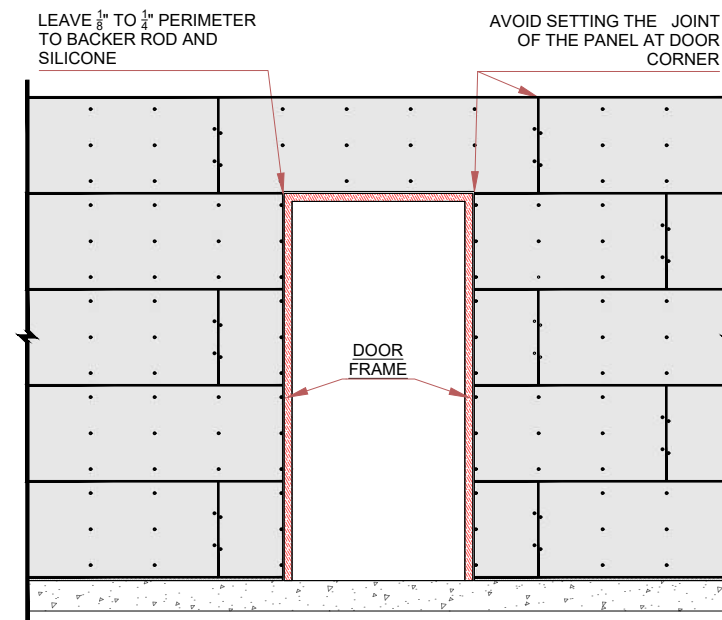
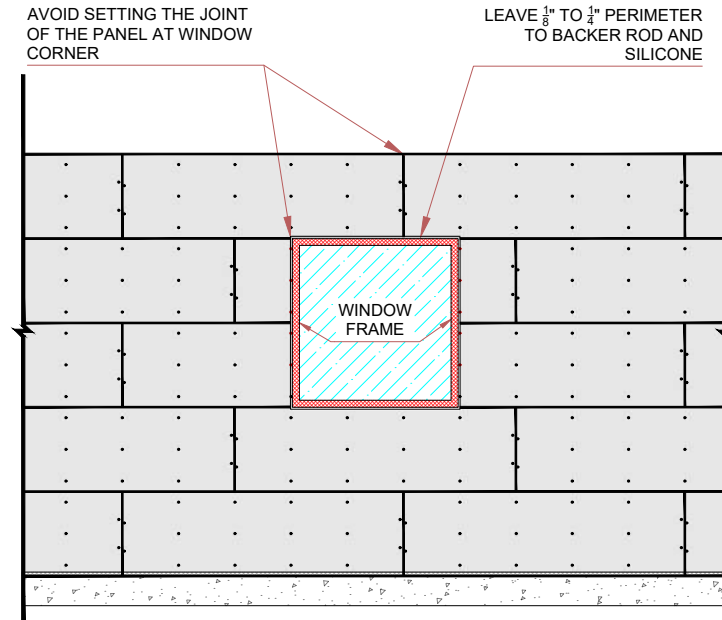
## CEILING FINISHES



### NOTES

- 1.- LEAVE  $\frac{1}{8}$ " TO  $\frac{1}{4}$ " PERIMETER FOR THERMAL EXPANSION AND SEAL WITH SILICONE
- 2.- APPLY SILICONE 100 % WATERPROOF FOR OUTDOOR. CHECK MANUFACTURER'S INSTALLATION GUIDELINES

### WINDOWS & DOORS



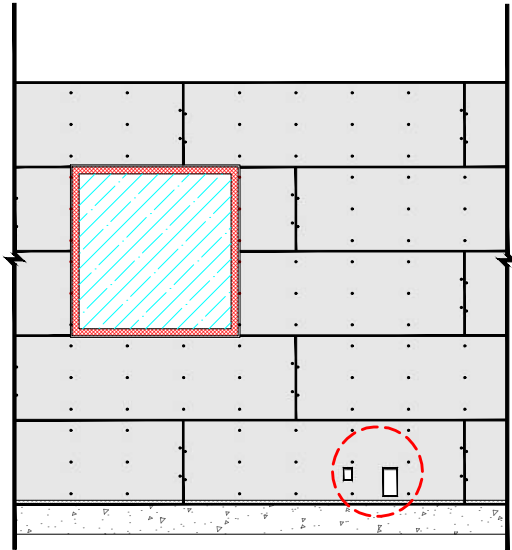
#### NOTES

- 1.- LEAVE  $\frac{1}{8}$ " TO  $\frac{1}{4}$ " PERIMETER FOR THERMAL EXPANSION AND SEAL WITH SILICONE
- 2.- APPLY SILICONE 100 % WATERPROOF FOR OUTDOOR. CHECK MANUFACTURER'S INSTALLATION GUIDELINES
- 3.- THE CRITERIA FOR DOORS AND WINDOWS ALSO APPLY TO GARAGES

## DRILLINGS - WALLS

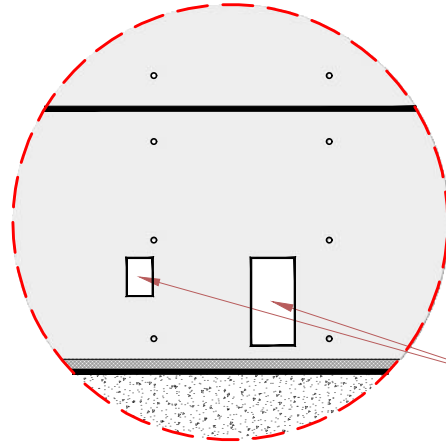
1.- CUT AS NEEDED FROM THE OUTSIDE  
THROUGH LITECON CLADDING

2.- PASS WIRES OR TUBES  
THROUGH THE PENETRATIONS

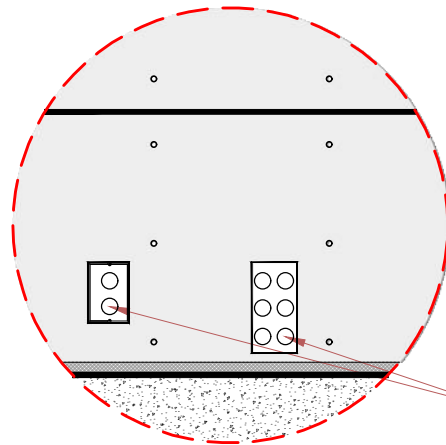


3.- FILL IN WITH FIREBLOCK  
POLYURETHANE FOAM

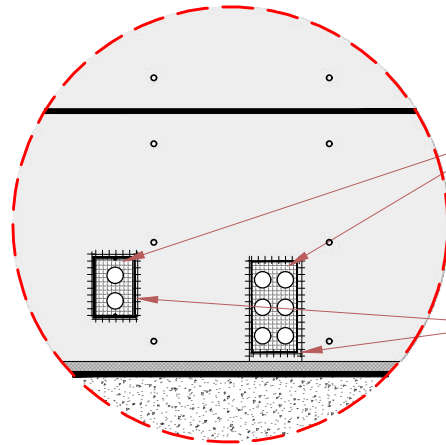
4.- COVER PENETRATIONS WITH  
FIBERGLASS MESH AND ADHESIVE  
LEAVE WIRES AND TUBES UNCOVERED



DRILLING ON THE  
PANEL



WIRES OR TUBES



FIREBLOCK  
POLYURETHANE  
FOAM

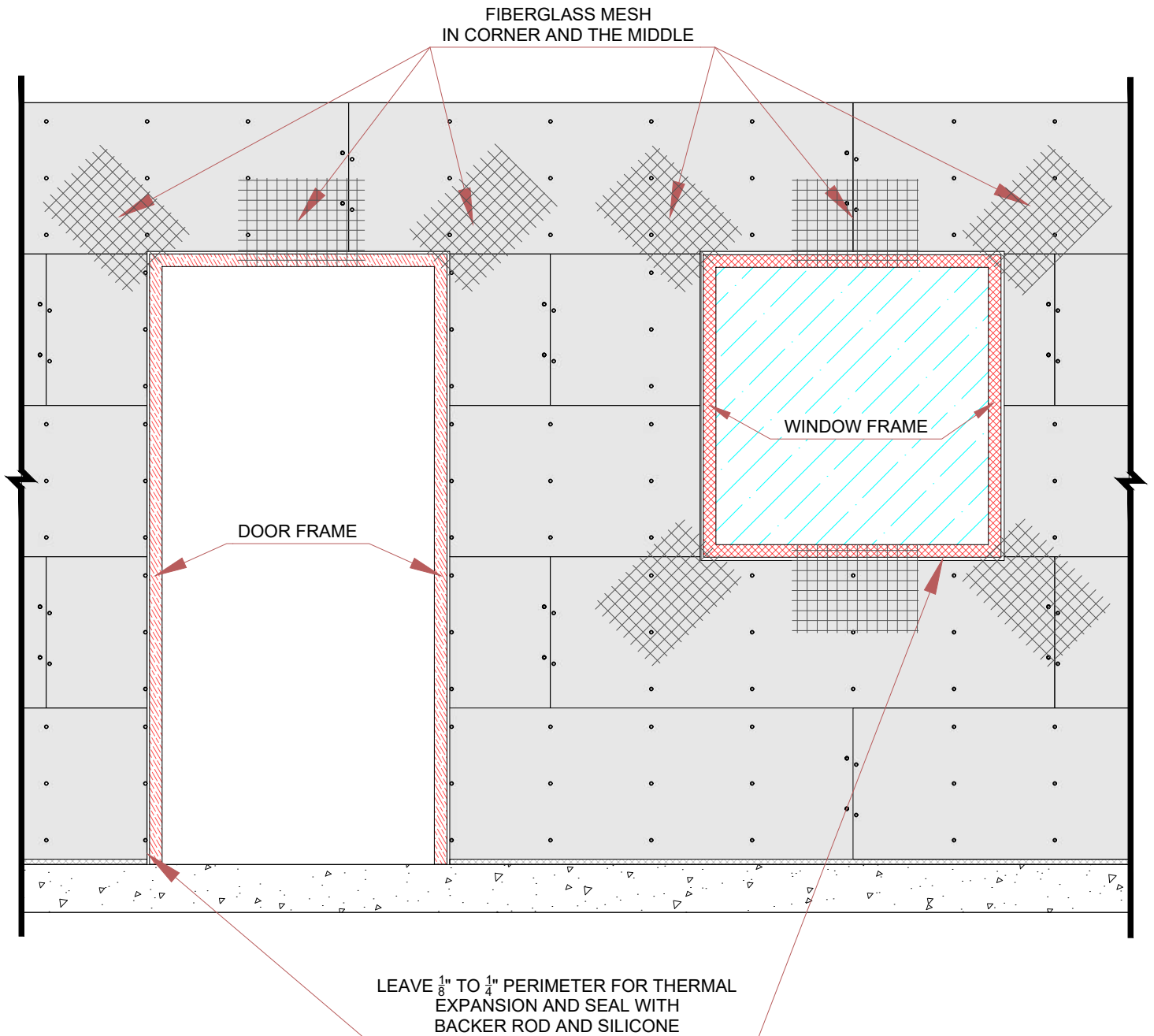
FIBERGLASS MESH  
EMBEDDED WITH  
LITECON ADHESIVE

### NOTES

- 1.- APPLY FIREBLOCK POLYURETHANE FOAM SEALANT. CHECK MANUFACTURER'S INSTALLATION GUIDELINES
- 2.- USE SELF-ADHESIVE FIBERGLASS MESH ALKALI RESISTANCE AND HIGH HUMIDITY RESISTANT CHECK MANUFACTURER'S INSTALLATION GUIDELINES



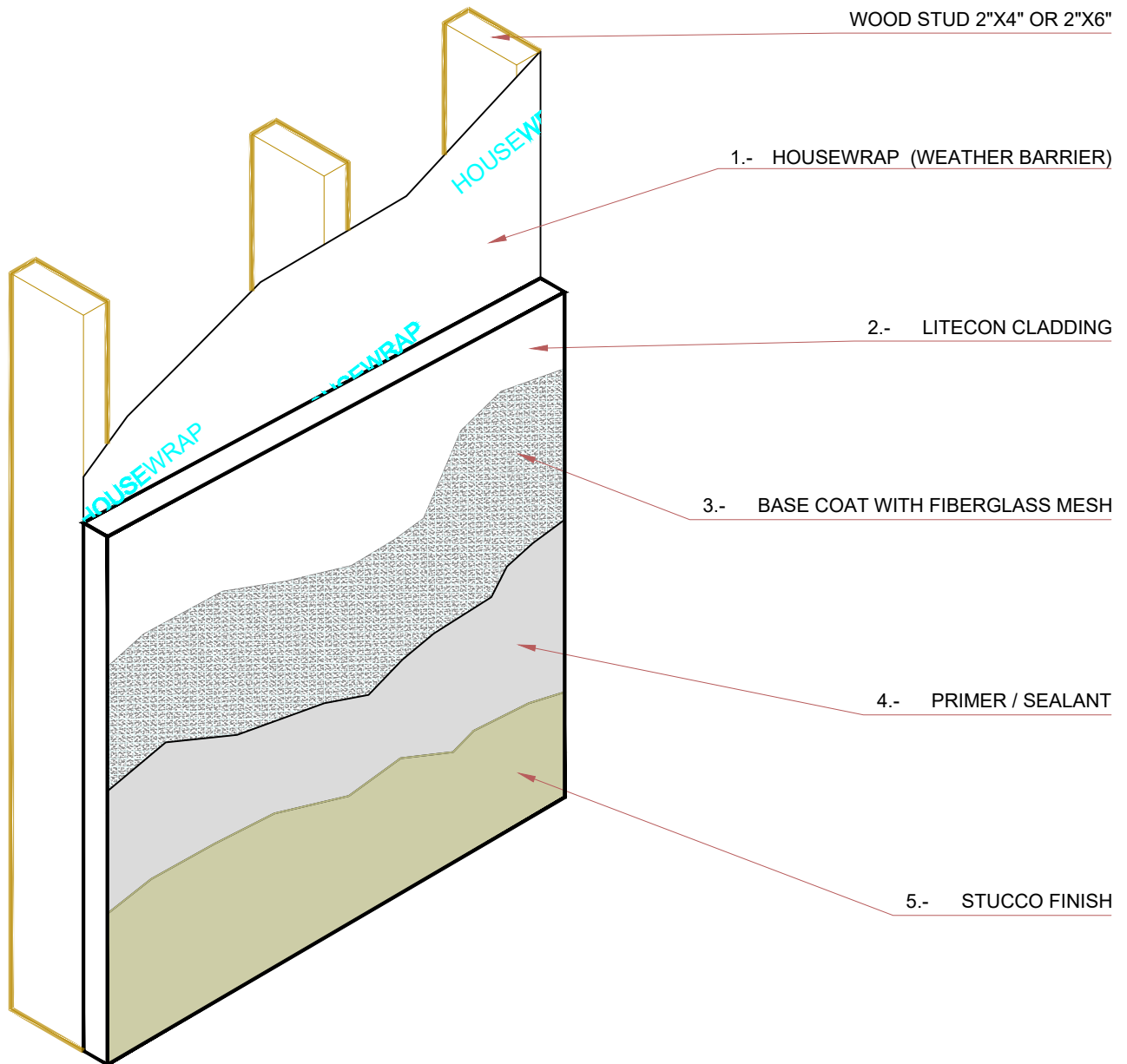
## FIBERGLASS MESH



### NOTES

1. FOR DOOR AND WINDOW CORNERS AND REPAIRS, USE SELF-ADHESIVE FIBERGLASS MESH ALKALI RESISTANCE AND HIGH HUMIDITY RESISTANT  
CHECK MANUFACTURER'S INSTALLATION GUIDELINES
2. IT IS ADVISABLE TO USE A FIBERGLASS MESH ACCORDING TO BASE COAT SYSTEM, FOR MORE INFORMATION CHECK MANUFACTURER'S INSTALLATION GUIDELINES
- 3.- APPLY SILICONE 100 % WATERPROOF FOR OUTDOOR. CHECK MANUFACTURER'S INSTALLATION GUIDELINES

### FINISHES



#### NOTES

- 1.- TAMLYNWRAP OR DUPONT DRAINABLE WRAP ARE RECOMMENDED AS A WEATHER BARRIER. CHECK MANUFACTURER'S INSTALLATION GUIDELINES
- 2.- DRAINABLE WRAP MUST BE INSTALLED WITH DRAINABLE PATTERN FACING LITECON CLADDING. CHECK MANUFACTURER'S INSTALLATION GUIDELINES
- 3.- IT IS ADVISABLE TO USE A FIBERGLASS MESH ACCORDING TO BASE COAT SYSTEM, FOR MORE INFORMATION CHECK MANUFACTURER'S INSTALLATION GUIDELINES
- 3.- CHECK MANUFACTURER'S INSTALLATION GUIDELINES FOR THICKNESS OF BASE COAT SYSTEM AND STUCCO FINISH

## FAQ'S

### BEFORE LITECON CLADDING INSTALLATION

- Q. WHAT DO I NEED TO CHECK BEFORE I START?
- A. MAKE SURE THE SLAB OR FOUNDATION HAS A BRICK LEDGE OR IRON ANGLE
- HAVE ALL THE NECESSARY MATERIALS AND TOOLS
  - HAVE A CUTTING AREA
- Q. HOW DO I PREPARE THE LITECON ADHESIVE?
- A. IN A 5 GALLON BUCKET PUT 2 INCHES OF CLEAN WATER, POUR HALF OF A BAG OF LITECON ADHESIVE AND STIR UNTIL THERE ARE NO LUMPS, LET IT REST FOR 5 MINUTES AND GIVE A LAST STIR
- Q. HOW MUCH LITECON ADHESIVE SHOULD I PREPARE?
- A. IT IS RECOMMENDED TO PREPARE HALF A BAG SO IT DOESN'T DRY OUT

### LITECON CLADDING INSTALLATION

- Q. HOW CAN I LEVEL THE FIRST ROW?
- A. YOU CAN LEVEL WITH AN S TYPE MORTAR, LITECON ADHESIVE OR A MIX OF BOTH
- Q. PIECES LEFT OVER FROM CUTS CAN BE USED IN OTHER AREAS?
- A. YES, THEY CAN BE USED
- Q. WHAT SHOULD I DO IF THE EDGE OF THE LITECON CLADDING IS NOT ON A STUD?
- A. THERE ARE TWO ALTERNATIVES, THE FIRST ONE IS TO CUT THE LITECON CLADDING AND THE SECOND IS TO PUT AN ADDITIONAL STUD FIXED TO THE EXISTING ONE
- Q. CAN I APPLY STEEL FLASHING INSTEAD OF LIQUID FLASHING?
- A. YES, YOU CAN

### WINDOWS AND DOORS

- Q. SHOULD WINDOWS BE INSTALLED PRIOR TO LITECON CLADDING?
- A. YES, WINDOWS SHOULD BE INSTALLED PRIOR TO LITECON CLADDING
- Q. HOW SHOULD WINDOWS BE INSTALLED?
- A. WINDOWS SHOULD BE INSTALLED PER MANUFACTURES GUIDELINES. LITECON CLADDING DOES NOT CHANGE WINDOW INSTALLATION
- Q. IF A WINDOW IS NOT LEVEL, CAN THE LITECON CLADDING BE CUT PARALLEL TO IT?
- A. YES IT CAN

### GARAGE

- Q. SHOULD GARAGE HEAD FLASHING BE INSTALLED PRIOR TO LITECON CLADDING?
- A. YES, GARAGE HEAD FLASHING SHOULD BE INSTALLED PRIOR TO LITECON CLADDING

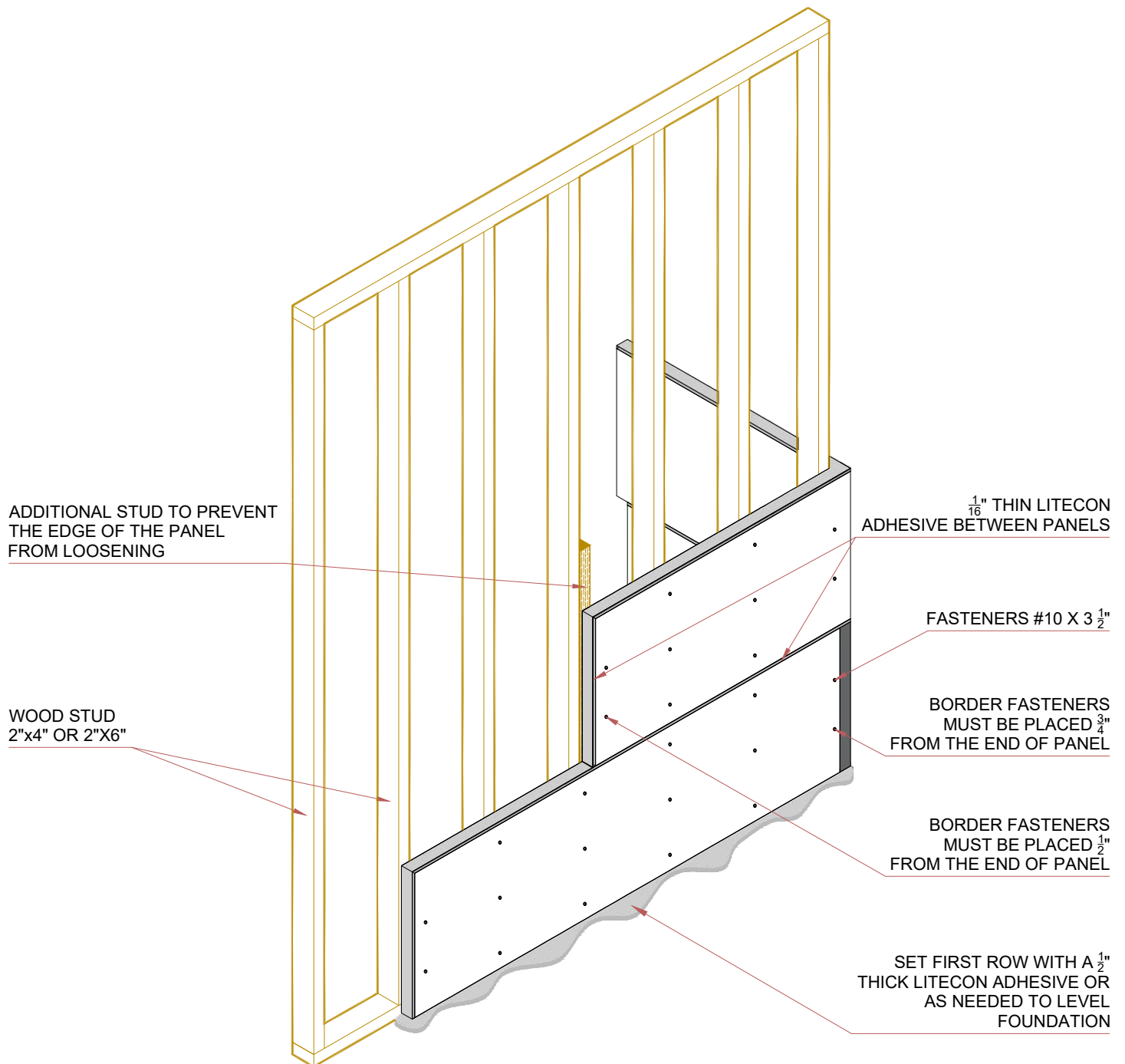
### SLUMPS

- Q. HOW TO AVOID JOINT OR ADHESIVE SLUMPS?
- A. AT THE END OF THE WORK DAY, GO BACK TO UNEVEN JOINT OR ADHESIVE SLUMPS AND SAND DOWN COMPLETELY. BOTH LITECON CLADDING AND LITECON ADHESIVE ARE VERY EASY TO SAND DOWN, BEFORE ADHESIVE DRIES AND ACHIEVE AN EXTREMELY SMOOTH SURFACE

### RECOMMENDATION

- WET THE WALL BEFORE APPLYING BASE COAT. SUSTENANCE: THE WALL MUST BE WET WITH WATER PRIOR TO THE APPLICATION OF THE BASE COAT SO THAT THE PANEL ABSORBS THE WATER AND LESS BASE COAT.

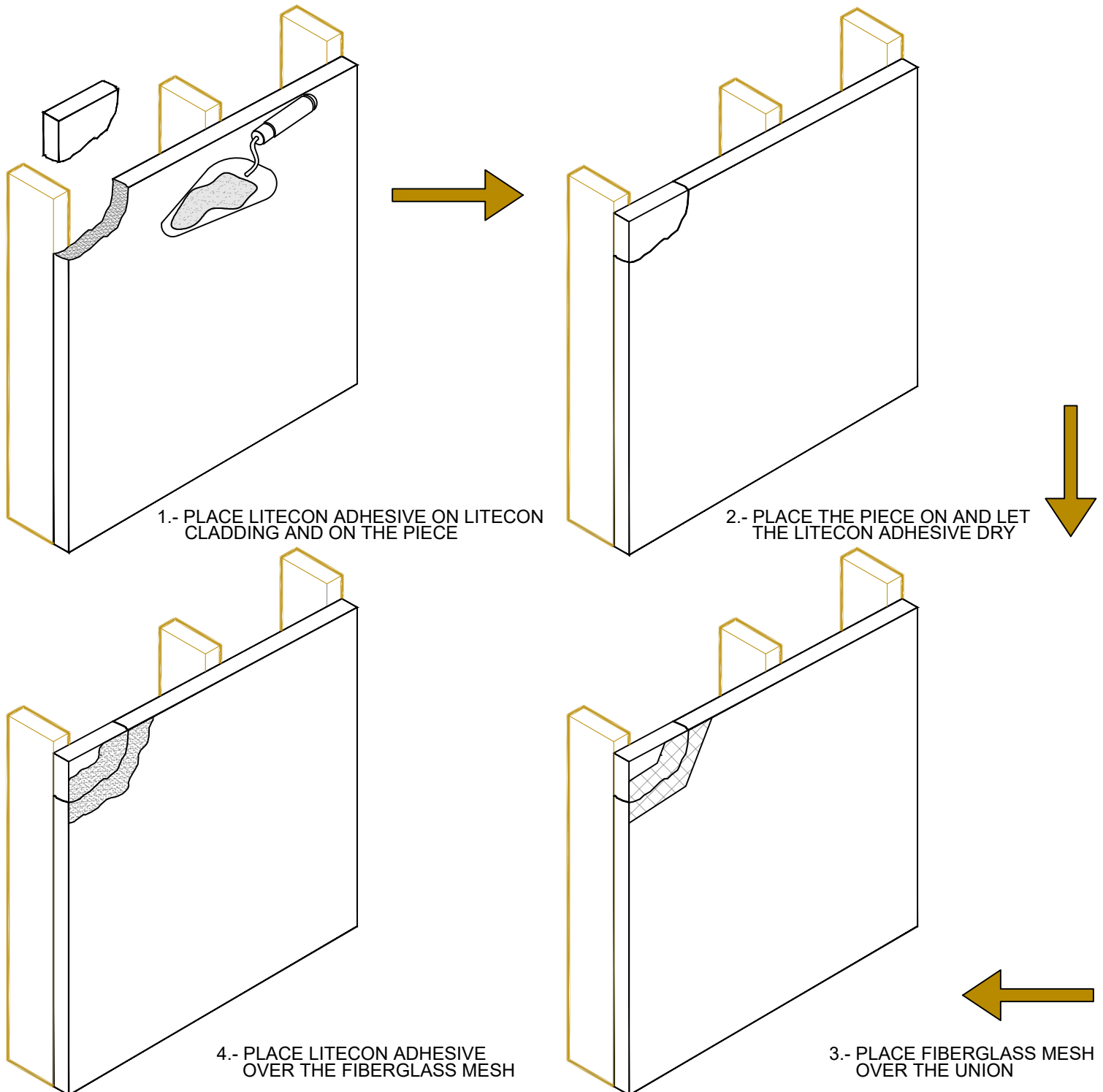
### PLACEMENT OF ADDITIONAL STUD WHEN THE EDGE OF THE PANEL IS NOT ALIGNED WITH A STUD



#### NOTES

- 1.- LEVEL FIRST ROW WITH LITECON ADHESIVE
- 2.- **MAKE SURE TO APPLY ENOUGH ADHESIVE, AT LEAST 1/16" THROUGHOUT ENTIRE MATING FACES**
- 3.- BE SURE TO **INTERLOCK 2"** OF PANEL IN CORNERS
- 4.- WHEN DRILLING THROUGH THE PANELS, MAKE SURE THE SCREW ENTERS THE WOOD STUD
- 5.- FASTENERS HEADS MUST BE COUNTERSUNK  $\frac{1}{2}"$  INTO THE PANEL
- 6.- FILL THE  $\frac{1}{2}"$  GAP GENERATED BY THE FASTENER WITH LITECON ADHESIVE TO PREVENT WATER INTRUSION TO THE STUD
- 7.- ALLOW LITECON ADHESIVE TO DRY FOR A MINIMUM OF 24 HOURS PRIOR TO APPLYING ANY LOAD

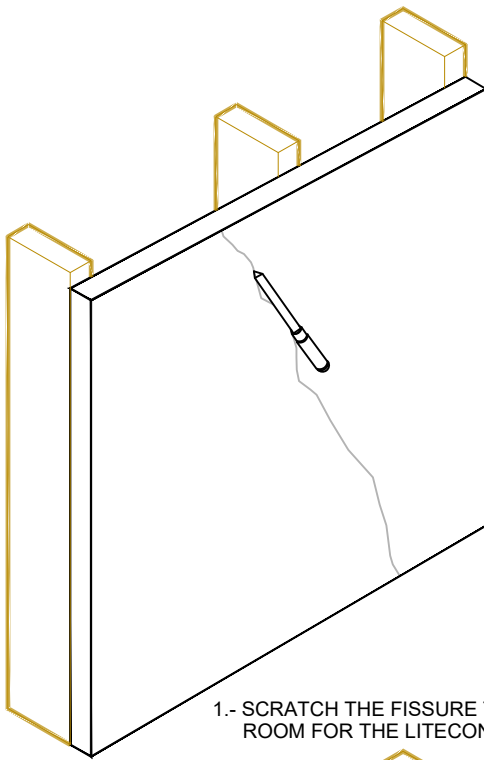
## CRACKS REPAIRING



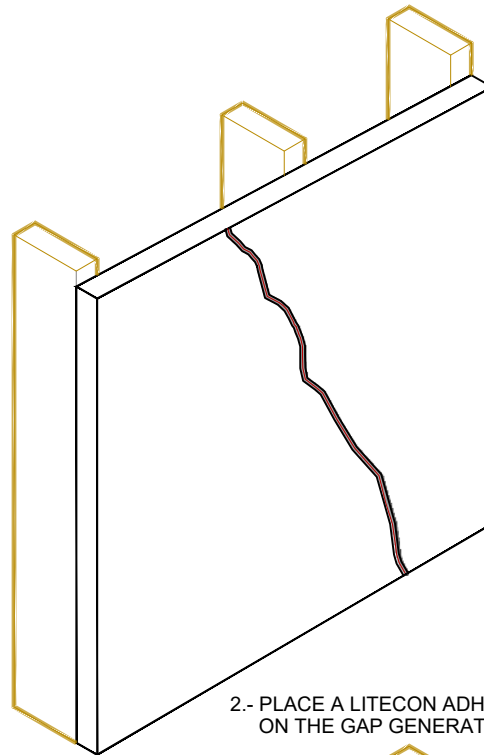
### NOTES

1. FOR DOOR AND WINDOW CORNERS AND REPAIRS, USE SELF-ADHESIVE FIBER GLASS MESH ALKALI RESISTANCE AND HIGH HUMIDITY RESISTANT
2. IT IS ADVISABLE TO USE A FIBERGLASS MESH ACCORDING TO THE BASE COAT SYSTEM, FOR MORE INFORMATION CHECK MANUFACTURER'S INSTALLATION GUIDELINES
3. CHECK MANUFACTURER'S INSTALLATION GUIDELINES FOR THICKNESS OF BASE COAT SYSTEM AND STUCCO FINISH

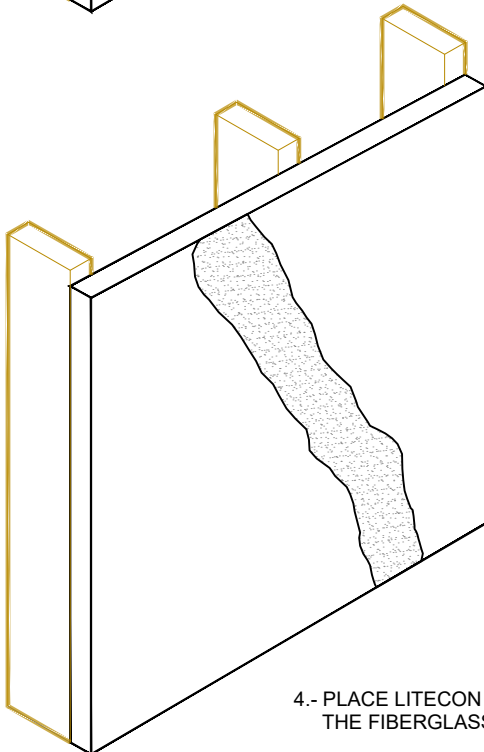
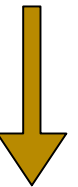
### FISSURE REPAIRING



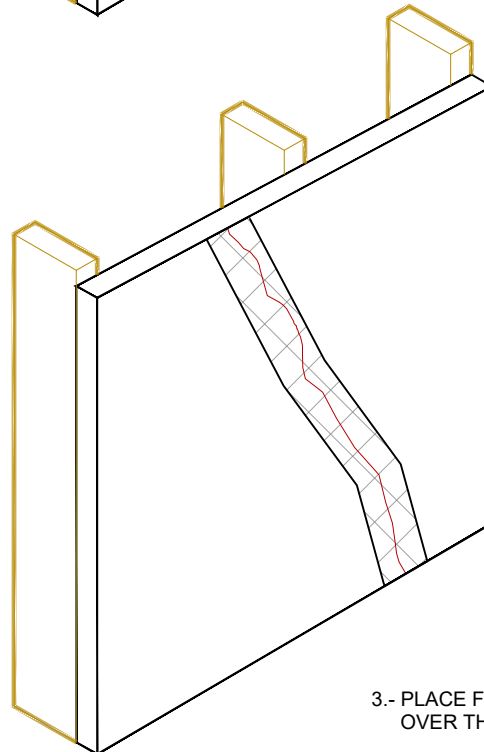
1.- SCRATCH THE FISSURE TO MAKE ROOM FOR THE LITECON ADHESIVE



2.- PLACE A LITECON ADHESIVE ON THE GAP GENERATED



4.- PLACE LITECON ADHESIVE OVER THE FIBERGLASS MESH



3.- PLACE FIBERGLASS MESH OVER THE FISSURE



#### NOTES

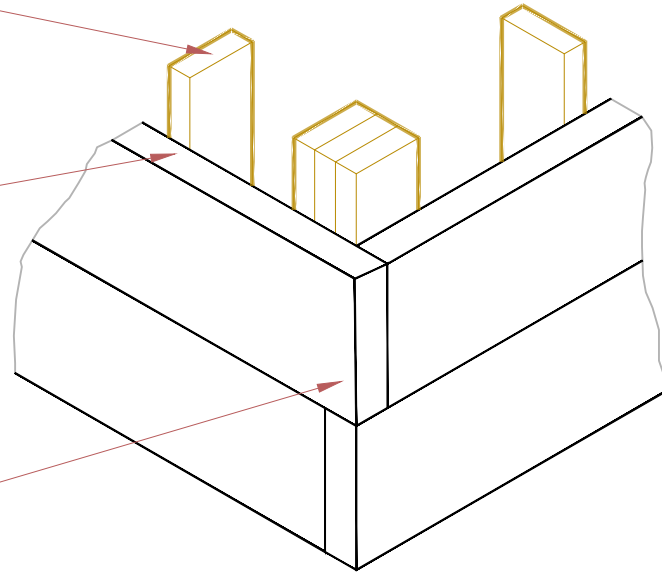
1. FOR DOOR AND WINDOW CORNERS AND REPAIRS, USE SELF-ADHESIVE FIBER GLASS MESH ALKALI RESISTANCE AND HIGH HUMIDITY RESISTANT
2. IT IS ADVISABLE TO USE A FIBERGLASS MESH ACCORDING TO THE BASE COAT SYSTEM, FOR MORE INFORMATION CHECK MANUFACTURER'S INSTALLATION GUIDELINES
3. CHECK MANUFACTURER'S INSTALLATION GUIDELINES FOR THICKNESS OF BASE COAT SYSTEM AND STUCCO FINISH

## CROOKED CORNER REPAIRING

WOOD STUD  
2"X4" OR 2"X6"

LITECON  
CLADDING

CROOKED PANEL

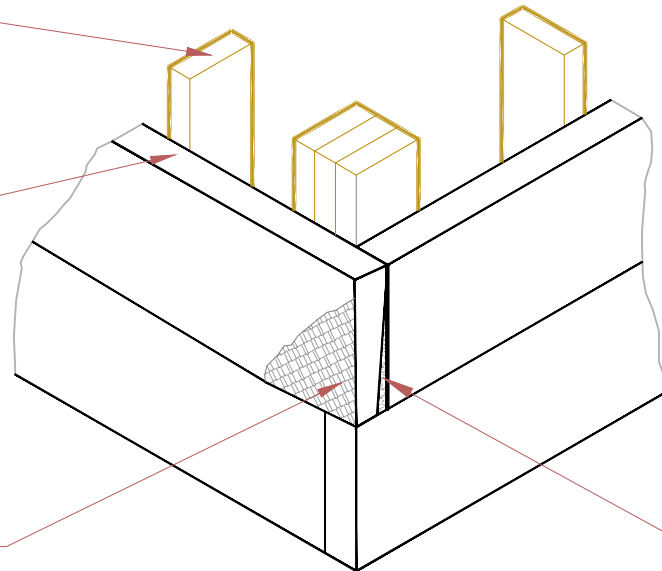


WOOD STUD  
2"X4" OR 2"X6"

LITECON  
CLADDING

GRIND WITH  
SANDPAPER TO LEVEL

FILL GAP WITH LITECON  
ADHESIVE



### NOTES

1. FOR DOOR AND WINDOW CORNERS AND REPAIRS, USE SELF-ADHESIVE FIBER GLASS MESH ALKALI RESISTANCE AND HIGH HUMIDITY RESISTANT
2. IT IS ADVISABLE TO USE A FIBERGLASS MESH ACCORDING TO THE BASE COAT SYSTEM, FOR MORE INFORMATION CHECK MANUFACTURER'S INSTALLATION GUIDELINES
3. CHECK MANUFACTURER'S INSTALLATION GUIDELINES FOR THICKNESS OF BASE COAT SYSTEM AND STUCCO FINISH



## LITECON CLADDING 2"

INSTALLATION GUIDE FOR CLADDING

NOVEMBER 2022