

NUDO PRODUCTS, INC

ENDUREX 557 INSULATED GLAZING FOR FIXED WINDOW



1500 TAYLOR AVENUE
SPRINGFIELD, IL 62703
PH: (800) 826-4132 FX: (217) 528-8722

INSTALLATION NOTES:

1. **ONE (1)** INSTALLATION ANCHOR CLIP IS REQUIRED AT EACH ANCHOR LOCATION SHOWN, UNLESS OTHERWISE STATED.
2. **FOR INSTALLATION INTO 2X BUCK** USE TWO (2) #14 WOOD SCREW PER LOCATION OF SUFFICIENT LENGTH TO ACHIEVE 1 1/2 INCH MINIMUM EMBEDMENT INTO WOOD SUBSTRATE.
3. **FOR INSTALLATION THROUGH 1X BUCK TO CONCRETE, OR DIRECTLY INTO CONCRETE,** USE ONE (1) 3/8" **POWER WEDGE BOLT+** PER LOCATION OF SUFFICIENT LENGTH TO ACHIEVE 2 1/8" INCH MINIMUM EMBEDMENT.
4. **FOR INSTALLATION THROUGH METAL STUD** USE ONE (1) 5/16" SELF-TAPPING SCREW PER LOCATION OF SUFFICIENT LENGTH TO ACHIEVE 3 **THREADS** MINIMUM PENETRATION BEYOND METAL FRAME SUBSTRATE.
5. MINIMUM EMBEDMENT AND EDGE DISTANCE EXCLUDE WALL FINISHES, INCLUDING BUT NOT LIMITED TO STUCCO, FOAM, BRICK VENEER, AND SIDING.
6. INSTALLATION ANCHORS AND ASSOCIATED HARDWARE MUST BE MADE OF CORROSION RESISTANT MATERIAL OR HAVE A CORROSION RESISTANT COATING.
7. FOR HOLLOW BLOCK AND GROUT FILLED BLOCK, DO NOT INSTALL INSTALLATION ANCHORS INTO MORTAR JOINTS. EDGE DISTANCE IS MEASURED FROM FREE EDGE OF BLOCK OR EDGE OF MORTAR JOINT INTO FACE SHELL OF BLOCK.
8. INSTALLATION ANCHORS SHALL BE INSTALLED IN ACCORDANCE WITH ANCHOR MANUFACTURER'S INSTALLATION INSTRUCTIONS, AND ANCHORS SHALL NOT BE USED IN SUBSTRATES WITH STRENGTHS LESS THAN THE MINIMUM STRENGTH SPECIFIED BY THE ANCHOR MANUFACTURER.
9. INSTALLATION ANCHOR CAPACITIES FOR PRODUCTS HEREIN ARE BASED ON SUBSTRATE MATERIALS WITH THE FOLLOWING PROPERTIES:
 - A. WOOD - MINIMUM SPECIFIC GRAVITY OF 0.55.
 - B. CONCRETE -MINIMUM COMPRESSIVE STRENGTH OF 3000 **PSI**.
 - C. STEEL - MINIMUM YIELD STRENGTH OF 33 **KSI**. MINIMUM WALL THICKNESS OF 16 GAUGE.

GENERAL NOTES:

1. THE PRODUCT SHOWN HEREIN IS DESIGNED AND MANUFACTURED TO COMPLY WITH THE CURRENT FLORIDA BUILDING CODE (FBC), INCLUDING HVHZ AND HAS BEEN EVALUATED ACCORDING TO THE FOLLOWING:
 - TAS 201-94
 - TAS 202-94
 - TAS 203-94
2. ADEQUACY OF THE EXISTING STRUCTURAL CONCRETE/MASONRY, 2X AND METAL STUD FRAMING AS A COMPONENT & CLADDING SYSTEM CAPABLE OF WITHSTANDING AND TRANSFERRING APPLIED PRODUCT LOADS IS THE RESPONSIBILITY OF THE ENGINEER OR ARCHITECT OF RECORD FOR THE PROJECT OF INSTALLATION.
3. 1X AND 2X BUCKS (WHEN USED) SHALL BE DESIGNED AND ANCHORED TO PROPERLY TRANSFER ALL LOADS TO THE STRUCTURE. BUCK DESIGN AND INSTALLATION IS THE RESPONSIBILITY OF THE ENGINEER OR ARCHITECT OF RECORD FOR THE PROJECT OF INSTALLATION.
4. THE INSTALLATION DETAILS DESCRIBED HEREIN ARE GENERIC AND MAY NOT REFLECT ACTUAL CONDITIONS FOR A SPECIFIC SITE. IF SITE CONDITIONS CAUSE INSTALLATION TO DEVIATE FROM THE REQUIREMENTS DETAILED HEREIN, A LICENSED ENGINEER OR ARCHITECT SHALL PREPARE SITE SPECIFIC DOCUMENTS FOR USE WITH THIS DOCUMENT.
5. APPROVED IMPACT PROTECTIVE SYSTEM **IS NOT REQUIRED** TO PROTECT THIS PRODUCT IN AREAS REQUIRING IMPACT RESISTANCE.
6. WINDOW FRAME MATERIAL: *ALUMINUM 6063-T5*.
7. DISSIMILAR METALS INCLUDING FASTENERS THAT MAY COME INTO CONTACT WITH ALUMINUM UNIT FRAMING SHALL BE PROTECTED AS DEFINED IN CURRENT FBC CHAPTER 23
8. SEE SHEET 4 FOR PANEL DETAIL.
9. **DESIGNATION "O" STANDS FOR THE FOLLOWING:**
O: *FIXED PANEL*

TABLE OF CONTENTS	
SHEET	SHEET DESCRIPTION
1	GENERAL & INSTALLATION NOTES
2	ELEVATION & ANCHOR LAYOUT
3	VERTICAL & HORIZONTAL SECTIONS
4	PANEL DETAIL

DESIGN PRESSURE RATING			
SIZE	INSTALLATION METHOD	DESIGN PRESSURE	MISSILE IMPACT RATING
99 5/8" X 51 1/8"	THROUGH ANGLE CLIP	+90.0 / -90.0 PSF	MISSILE LEVEL E

NOTE:
TYPICAL TESTED DETAILS SHOWN. THE PANEL IS QUALIFIED FOR USE AS AN IMPACT RESISTANT GLAZING TO BE USED IN ALUMINUM FRAMING SYSTEMS UNDER SEPARATE APPROVAL. THE LOWER DESIGN PRESSURE AND SIZE RATING SHALL CONTROL THE ALLOWABLE RATING.

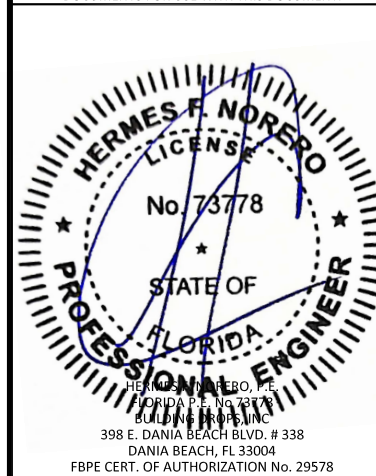
TITLE: ENDUREX 557 INSULATED GLAZING & CURTAIN WALL PANEL

GENERAL & INSTALLATION NOTES

PREPARED BY: BUILDING DROPS, INC.
398 E. DANIA BEACH BLVD., STE. 338
DANIA BEACH, FL 33004
PH: (954)399-8478
FAX: (954)744-4738
WEB: www.buildingdrops.com

REMARKS	BY	DATE

THE INSTALLATION DETAILS DESCRIBED HEREIN ARE GENERIC AND MAY NOT REFLECT ACTUAL CONDITIONS FOR A SPECIFIC SITE. IF SITE CONDITIONS CAUSE INSTALLATION TO DEVIATE FROM THE REQUIREMENTS DETAILED HEREIN, A LICENSED ENGINEER OR ARCHITECT SHALL PREPARE SITE SPECIFIC DOCUMENTS FOR USE WITH THIS DOCUMENT.



FL #: **FL42001**

DATE: **03.01.23**

DWG. BY: **DI** CHK. BY: **HFN**

SCALE: **NTS**

DWG. #: **NDO003**

SHEET: **1** OF 4

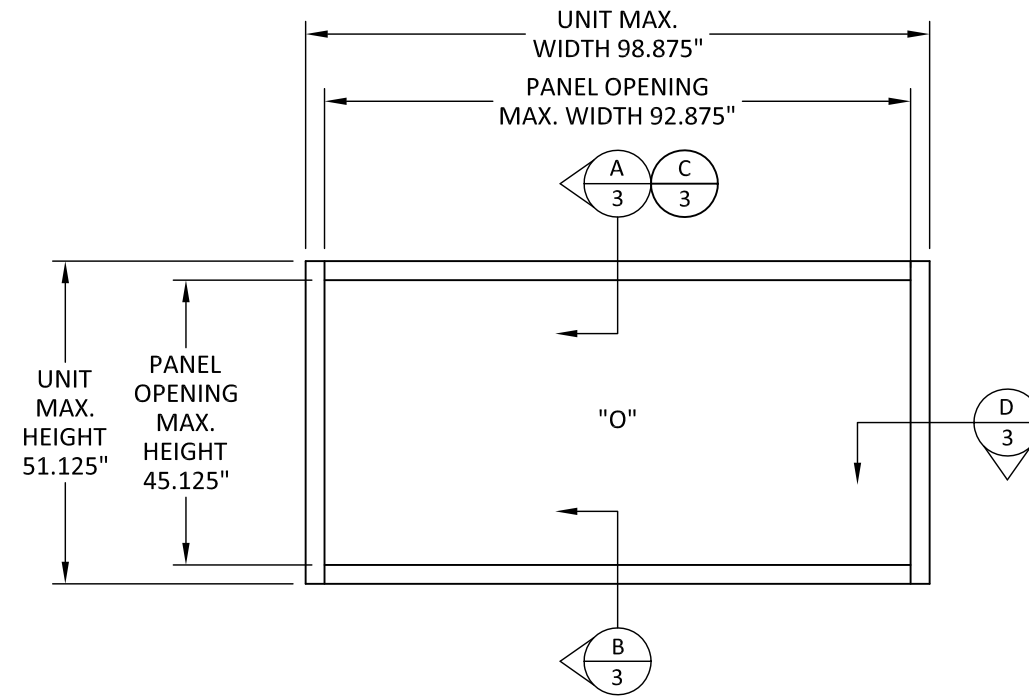
NUDO®

1500 TAYLOR AVENUE
 SPRINGFIELD, IL 62703
 PH: (800) 826-4132 FX: (217) 528-8722

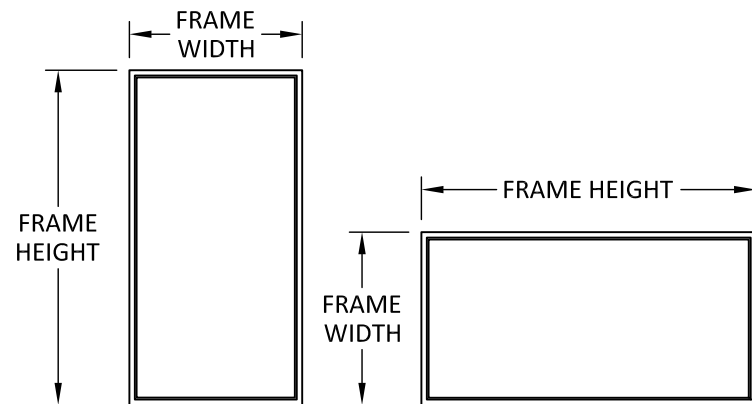
TITLE: ENDUREX 557 INSULATED
 GLAZING & CURTAIN WALL PANEL

ELEVATION & ANCHOR LAYOUT

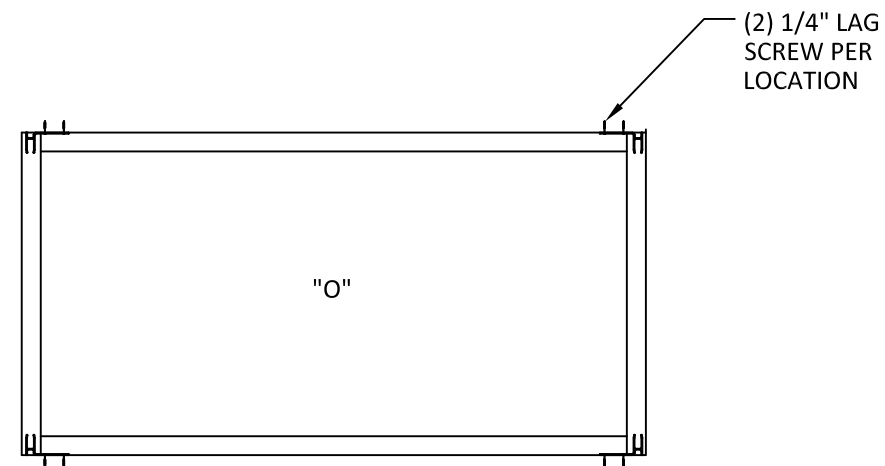
PREPARED BY:
BUILDING DROPS, INC.
 398 E. DANIA BEACH BLVD., STE. 338
 DANIA BEACH, FL 33004
 PH: (954) 399-8478
 FAX: (954) 744-4738
 WEB: www.buildingdrops.com



ELEVATION



NOTE:
 WINDOW WIDTH AND HEIGHT ARE
 INTERCHANGEABLE FOR ALL SIZES SHOWN
 HEREIN NOT TO EXCEED MAXIMUM
 QUALIFIED SQUARE FOOT AREA.

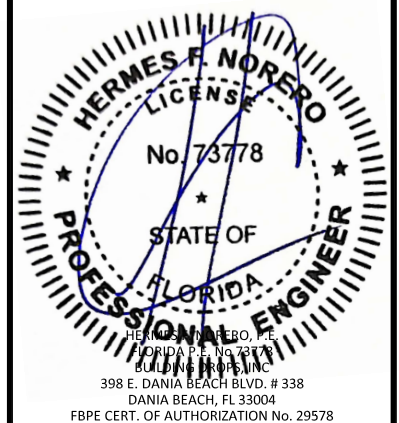


ANCHOR LAYOUT

NOTE:
 TYPICAL TESTED DETAILS SHOWN. THE PANEL IS QUALIFIED FOR USE AS AN IMPACT
 RESISTANT GLAZING TO BE USED IN ALUMINUM FRAMING SYSTEMS UNDER
 SEPARATE APPROVAL. THE LOWER DESIGN PRESSURE AND SIZE RATING SHALL
 CONTROL THE ALLOWABLE RATING.

REMARKS	BY	DATE

THE INSTALLATION DETAILS DESCRIBED HEREIN ARE GENERIC AND MAY NOT REFLECT ACTUAL CONDITIONS FOR A SPECIFIC SITE. IF SITE CONDITIONS CAUSE INSTALLATION TO DEVIATE FROM THE REQUIREMENTS DETAILED HEREIN, A LICENSED ENGINEER OR ARCHITECT SHALL PREPARE SITE SPECIFIC DOCUMENTS FOR USE WITH THIS DOCUMENT.



FL #: **FL42001**

DATE: **03.01.23**

DWG. BY: **DI** CHK. BY: **HFN**

SCALE: **NTS**

DWG. #: **NDO003**

SHEET:
2

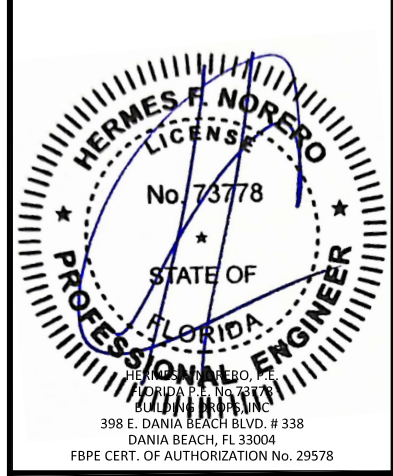
TITLE: ENDUREX 557 INSULATED GLAZING & CURTAIN WALL PANEL

VERTICAL & HORIZONTAL SECTIONS

PREPARED BY: BUILDING DROPS, INC.
398 E. DANIA BEACH BLVD., STE. 338
DANIA BEACH, FL 33004
PH: (954) 399-8478
FAX: (954) 744-4738
WEB: www.buildingdrops.com

REMARKS	BY	DATE

THE INSTALLATION DETAILS DESCRIBED HEREIN ARE GENERIC AND MAY NOT REFLECT ACTUAL CONDITIONS FOR A SPECIFIC SITE. IF SITE CONDITIONS CAUSE INSTALLATION TO DEVIATE FROM THE REQUIREMENTS DETAILED HEREIN, A LICENSED ENGINEER OR ARCHITECT SHALL PREPARE SITE SPECIFIC DOCUMENTS FOR USE WITH THIS DOCUMENT.



FL #: **FL42001**

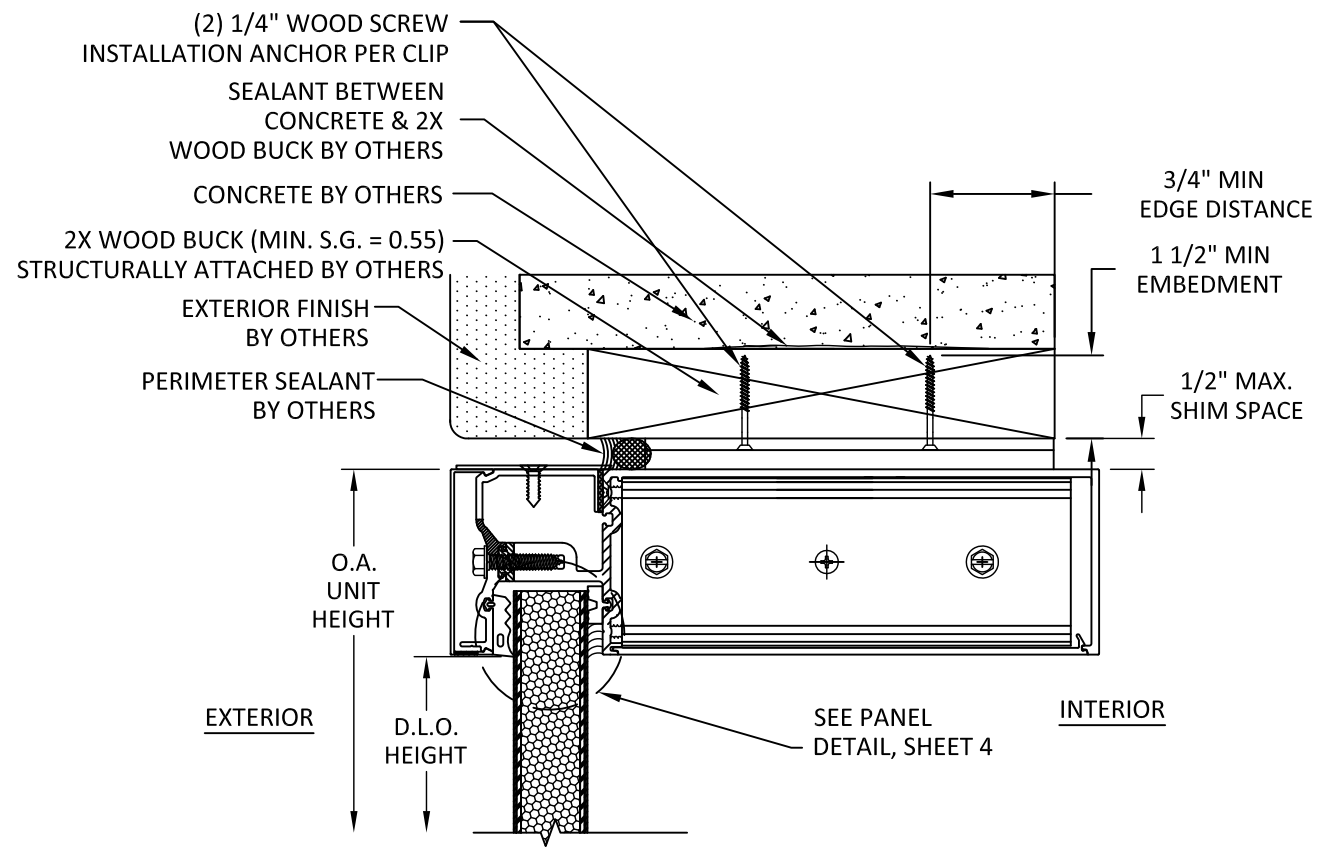
DATE: **03.01.23**

DWG. BY: **DI** CHK. BY: **HFN**

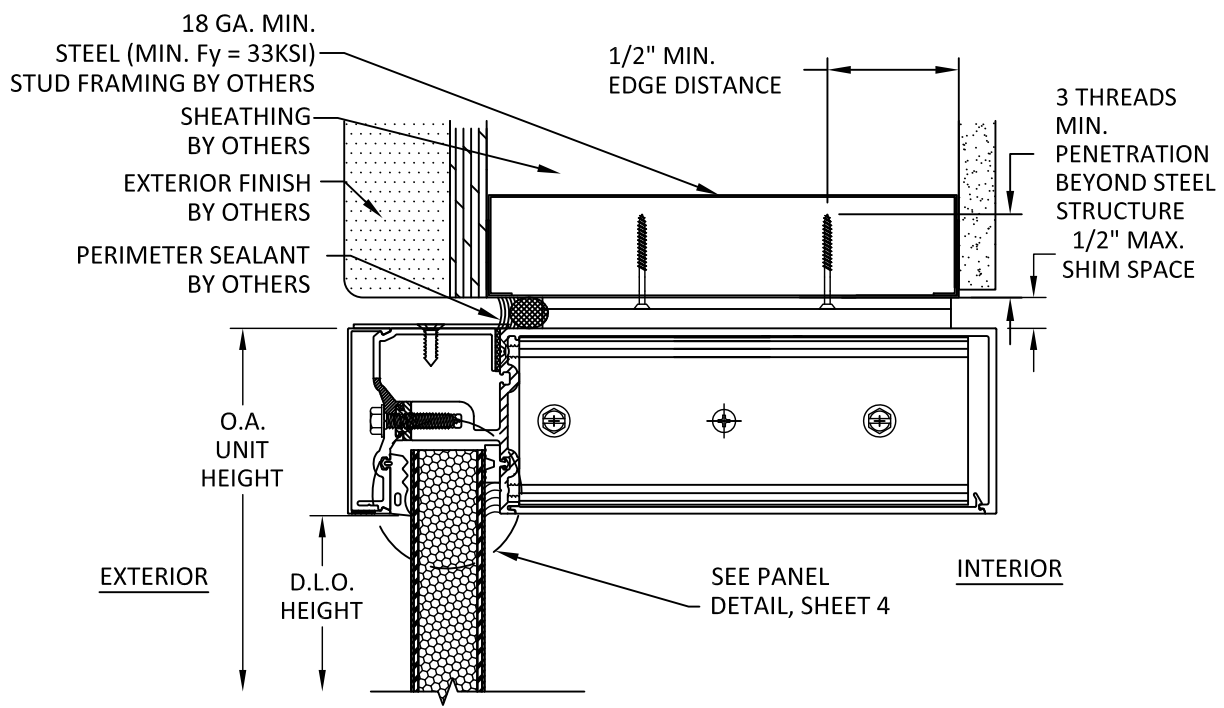
SCALE: **NTS**

DWG. #: **NDO003**

SHEET:



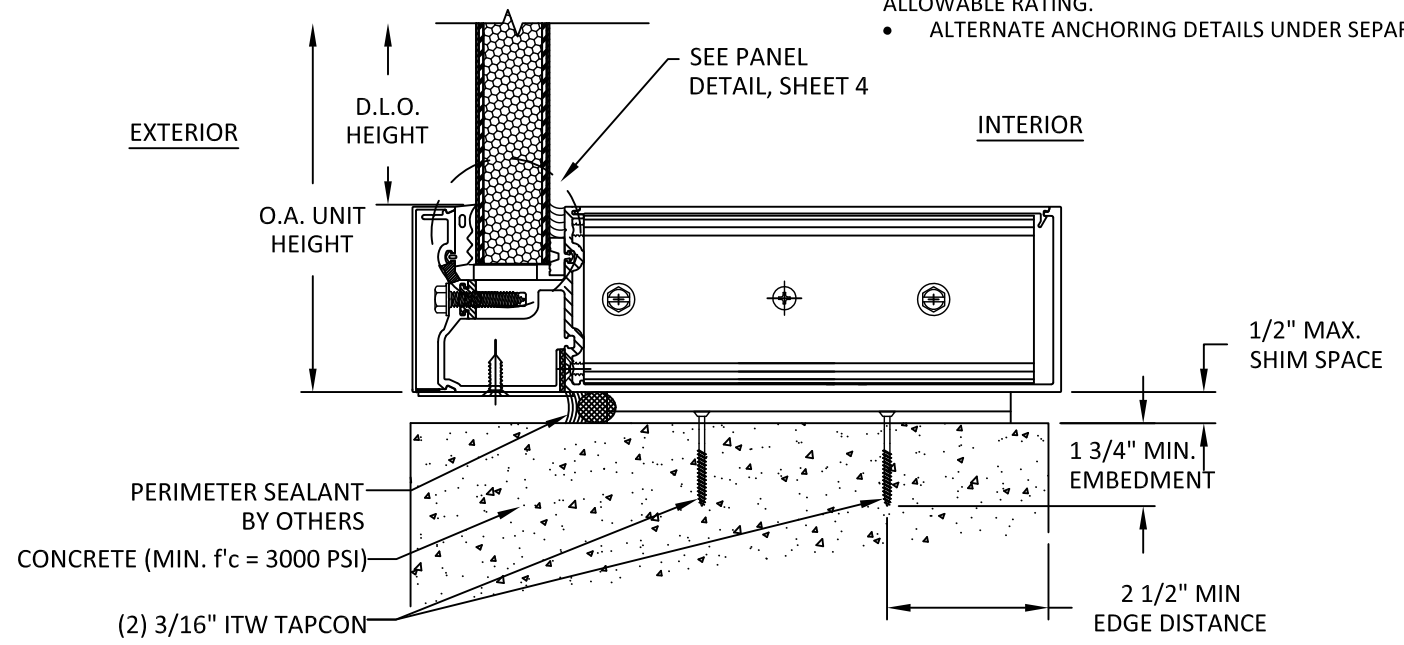
A
3 **VERTICAL SECTION**
HEAD - 2X WOOD BUCK
SEE INSTALLATION NOTE #2



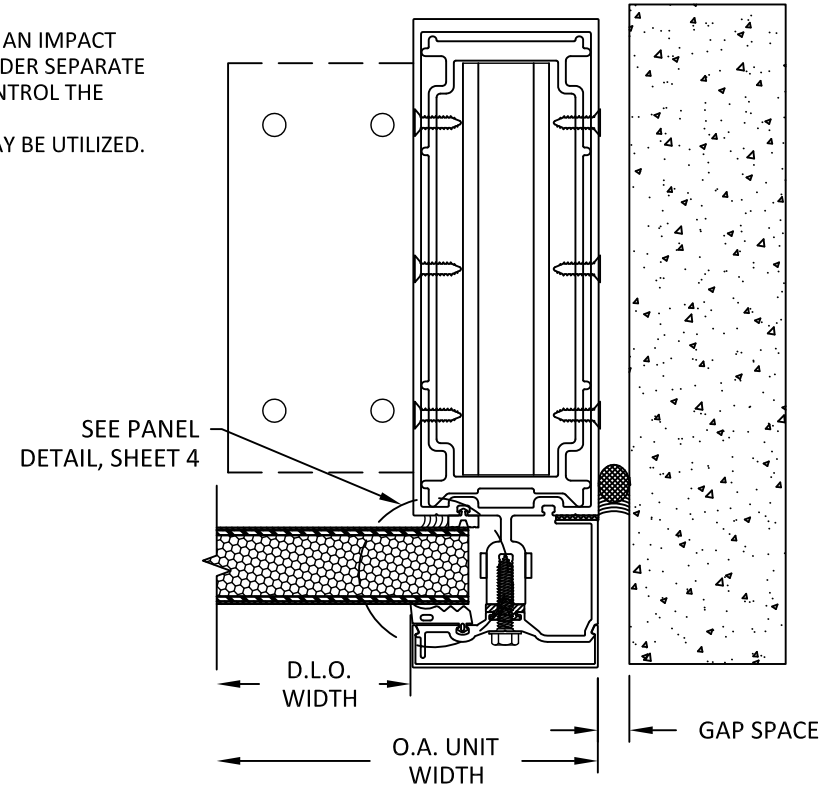
C
3 **VERTICAL SECTION**
HEAD - STEEL STUD FRAME
SEE INSTALLATION NOTE #4

NOTE:
TYPICAL TESTED DETAILS SHOWN. THE PANEL IS QUALIFIED FOR USE AS AN IMPACT RESISTANT GLAZING TO BE USED IN ALUMINUM FRAMING SYSTEMS UNDER SEPARATE APPROVAL. THE LOWER DESIGN PRESSURE AND SIZE RATING SHALL CONTROL THE ALLOWABLE RATING.

- ALTERNATE ANCHORING DETAILS UNDER SEPARATE APPROVAL MAY BE UTILIZED.



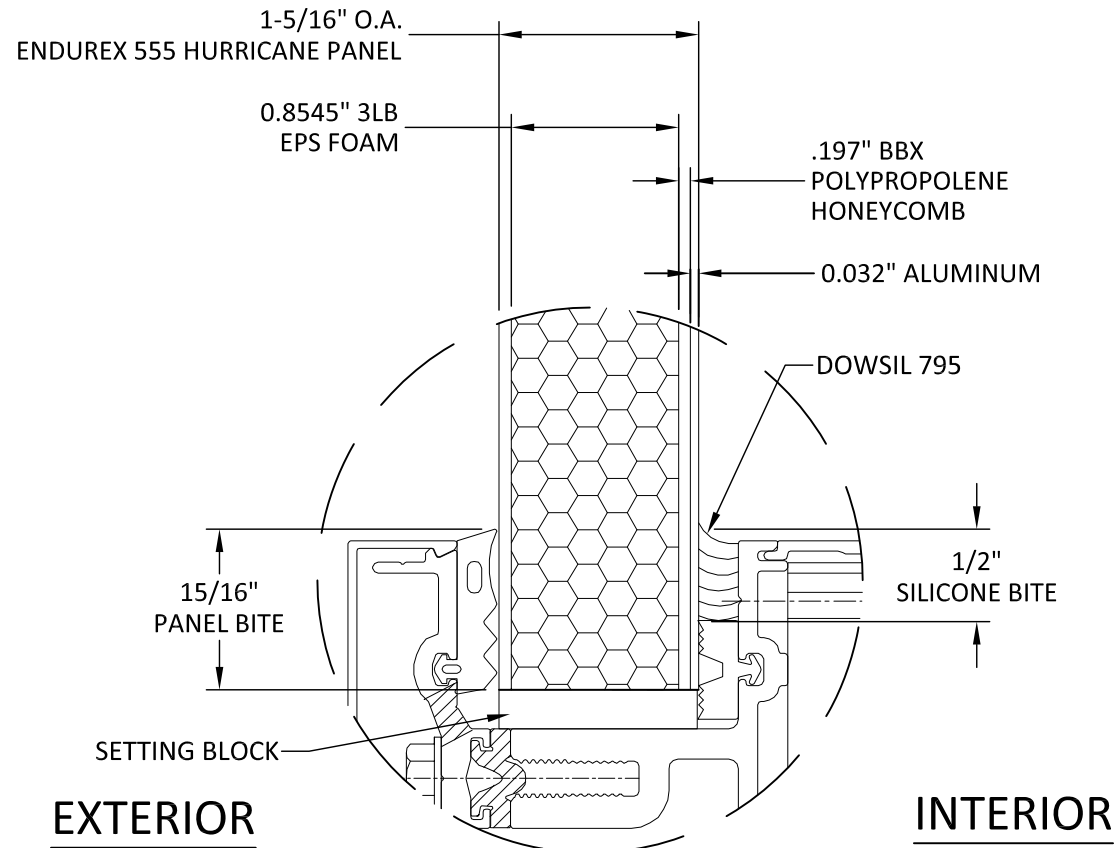
B
3 **VERTICAL SECTION**
SILL - CONCRETE/MASONRY
SEE INSTALLATION NOTE #3



D
3 **HORIZONTAL SECTION**
JAMB - CONCRETE/MASONRY

NOTE:
 TYPICAL TESTED DETAILS SHOWN. THE PANEL IS QUALIFIED FOR USE AS AN IMPACT
 RESISTANT GLAZING TO BE USED IN ALUMINUM FRAMING SYSTEMS UNDER SEPARATE
 APPROVAL. THE LOWER DESIGN PRESSURE AND SIZE RATING SHALL CONTROL THE
 ALLOWABLE RATING.

- PANEL SHALL BE WET GLAZED AS SHOWN IN THE GLAZING DETAIL WITH 15/16" MIN
 PANEL BITE AND 1/2" MIN SILICONE BITE.



PANEL DETAIL

- NOTE:
1. SETTING BLOCK DUROMETER
 HARDNESS OF 70-90 (SHORE A) AS
 REFERENCED IN CHAPTER 24.
 2. SETTING BLOCKS TO BE LOCATED AT
 1/4 SPAN LENGTH AS PER CHAPTER 24.

ENDUREX 557-HURRICANE PANEL, LP-S6-8-GRAY-KAL		
TEST	RESULT	MIAMI-DADE ACCEPTANCE CRITERIA
ASTM D638: TENSILE STRENGTH	DIRECTION 1 AVG:	23,800 PSI
	DIRECTION 2 AVG:	26,300 PSI
	OVERALL AVERAGE:	25,100 PSI
ASTM D1929: SELF-IGNITION TEMPRATURE	842 °F (450 °C)	> 650 °F (343 °C)
ASTM D1929: FLASH IGNITION TEMPRATURE	734 °F (390 °C)	N/A
ASTM D2843: AVERAGE SMOKE DENSITY RATING	63.6	< 75
ASTM D635: AVERAGE LINEAR RATE OF BURN	26.4 MM/MIN, CLASS CC2	CLASS CC1 OR CC2

NUDO

1500 TAYLOR AVENUE
 SPRINGFIELD, IL 62703
 PH: (800) 826-4132 FX: (217) 528-8722

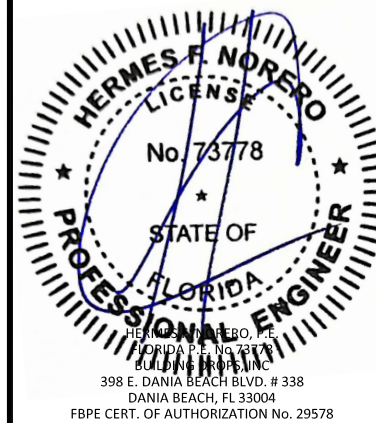
TITLE: ENDUREX 557 INSULATED
 GLAZING & CURTAIN WALL PANEL

PANEL DETAIL

PREPARED BY:
BUILDING DROPS, INC.
 398 E. DANIA BEACH BLVD., STE. 338
 DANIA BEACH, FL 33004
 PH: (954)399-8478
 FAX: (954)744-4738
 WEB: www.buildingdrops.com

REMARKS	BY	DATE

THE INSTALLATION DETAILS DESCRIBED HEREIN ARE GENERIC
 AND MAY NOT REFLECT ACTUAL CONDITIONS FOR A SPECIFIC
 SITE. IF SITE CONDITIONS CAUSE INSTALLATION TO DEVIATE
 FROM THE REQUIREMENTS DETAILED HEREIN, A LICENSED
 ENGINEER OR ARCHITECT SHALL PREPARE SITE SPECIFIC
 DOCUMENTS FOR USE WITH THIS DOCUMENT.



FL #: **FL42001**

DATE: **03.01.23**

DWG. BY: **DI** CHK. BY: **HFN**

SCALE: **NTS**

DWG. #: **NDO003**

SHEET: **4**