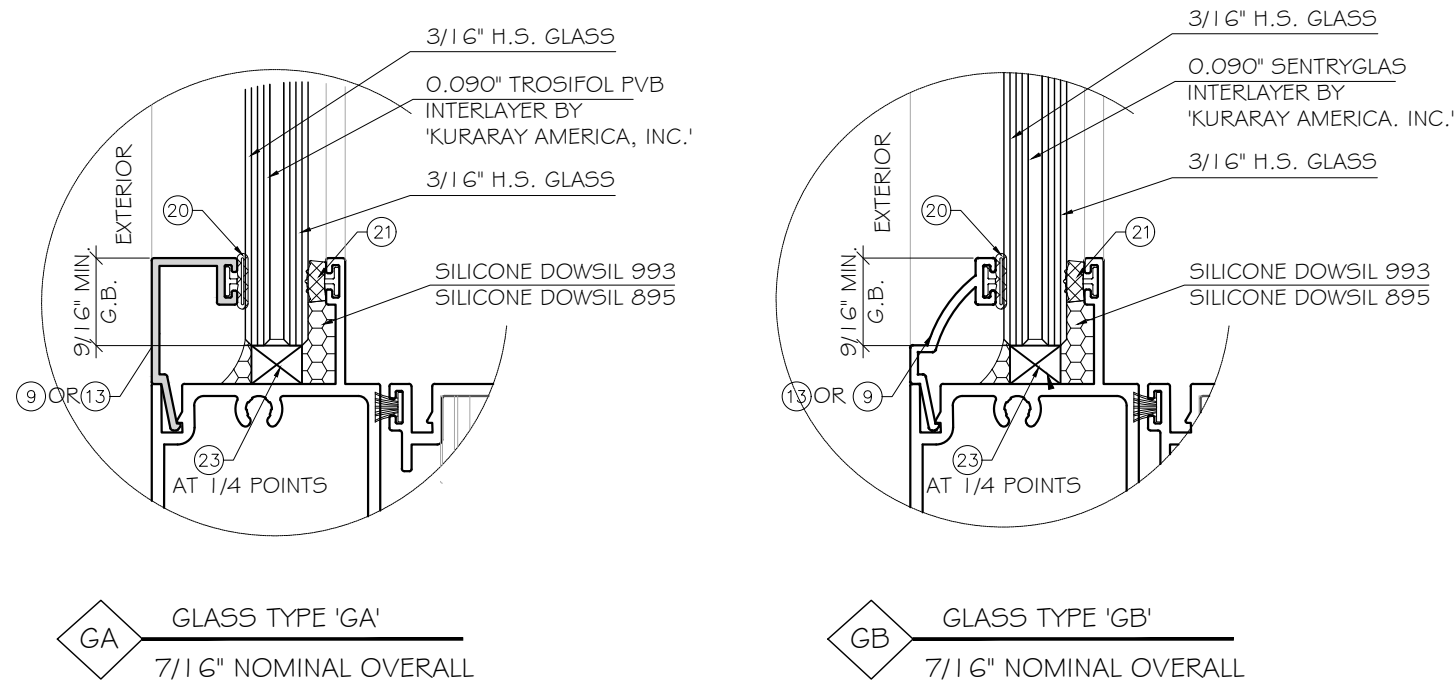


LINEA ROSSA LLC

SERIES "LR-220" ALUMINUM HORIZONTAL SLIDING WINDOW-L.M.I & S.M.I.



GENERAL NOTES:

- THIS PRODUCT HAS BEEN DESIGNED AND TESTED TO COMPLY WITH THE REQUIREMENTS OF THE 7TH EDITION OF FLORIDA BUILDING CODE 2020 INCLUDING HIGH VELOCITY HURRICANE ZONE (HVHZ).
- WINDOWS RATED FOR LARGE MISSILE IMPACT. LMI SYSTEM TO BE USED FOR INSTALLATIONS UP TO 30 FT OF GRADE. IMPACT SHUTTERS ARE NOT REQUIRED.
- THESE WINDOWS ARE APPROVED FOR AIR AND WATER INFILTRATION.
- ANCHORS SHALL BE AS LISTED, SPACED AS SHOWN ON DETAILS. ANCHORS EMBEDMENT TO BASE MATERIAL SHALL BE BEYOND WALL DRESSING OR STUCCO.
- ANCHORING OR LOADING CONDITIONS NOT SHOWN IN THESE DETAILS ARE NOT PART OF THIS APPROVAL.
- MATERIALS INCLUDING BUT NOT LIMITED TO STEEL/ METAL SCREWS THAT COME INTO CONTACT WITH OTHER DISSIMILAR MATERIALS SHALL MEET THE REQUIREMENTS OF THE 7TH EDITION OF FLORIDA BUILDING CODE 2020 SECTION AS APPLICABLE.
- METAL STRUCTURES BY OTHERS TO BE DESIGNED TO SUPPORT THE LOADS IMPOSED BY THIS GLAZING SYSTEM AND TO TRANSFER SUCH LOADS TO THE BUILDING MAIN STRUCTURE.
- ULTIMATE LOAD OBTAINED FROM ASCE 7-16, MULTIPLY BY 0.6 SHALL BE LESS THAN OR EQUAL TO MAX. DESIGN LOAD IN THIS DOCUMENT. THE DESIGN LOADS SHOWN IN THIS DOCUMENT ARE ALLOWABLE DESIGN LOADS.
- SEALANT:
ALL FRAME CORNERS, JOINTS, MULLION SEAMS AND PERIMETER GLAZING BEAD TO FRAME INSTALLATION FASTENERS SEALED WITH SILICON SEALANT.

USE CHARTS AS FOLLOWS.

- STEP 1:** DETERMINE DESIGN WIND LOAD REQUIREMENTS BASED ON WIND VELOCITY, BLDG. HEIGHT, WIND ZONE USING APPLICABLE ASCE 7-16 STANDARD OR WIND TUNNEL REPORTS.
- STEP 2:** SEE SHEET E1 FOR APPROVED TYPICAL ELEVATION & CONFIGURATION.
- STEP 3:** SEE SHEET E2 FOR APPROVED WINDOW SIZE AND ALLOWABLE DESIGN LOAD.
- STEP 4:** ANCHOR OPTION SEE SHEET D1. ANCHOR LAYOUT SEE SHEET E1.
- STEP 5:** THE LOWEST VALUE RESULTING FROM STEPS 2,3 & 4 THAT EXCEED THE DESIGN WIND PRESSURES DETERMINED THRU STEP 1 SHALL APPLY TO ENTIRE SYSTEM.

NOTE:
GLASS COMPLIES WITH ASTM E1300-09 (3 SEC. GUSTS).

LIMITATIONS OF USE

A- THIS PRODUCT EVALUATION DOCUMENT (P.E.D.) PREPARED BY THIS ENGINEER IS GENERIC AND DOES NOT PROVIDE INFORMATION FOR A SITE SPECIFIC PROJECT, I.E. WHERE THE SITE CONDITIONS DEVIATE FROM THE P.E.D.

B- CONTRACTOR TO BE RESPONSIBLE FOR THE SELECTION, PURCHASE AND INSTALLATION OF THIS PRODUCT BASED ON THIS PRODUCT EVALUATION PROVIDED. HE/SHE DOES NOT DEVIATE FROM THE CONDITIONS DETAILED ON THIS DOCUMENT.

C- THIS PRODUCT EVALUATION DOCUMENT WILL BE CONSIDERED INVALID IF ALTERED BY ANY MEANS.

D- SITE SPECIFIC PROJECTS SHALL BE PREPARED BY A FLORIDA REGISTERED ENGINEER OR ARCHITECT WHICH WILL BECOME THE ENGINEER OF RECORD (E.O.R.) FOR THE PROJECT AND WHO WILL BE RESPONSIBLE FOR THE PROPER USE OF THE P.E.D. ENGINEER OF RECORD, ACTING AS A DELEGATED ENGINEER TO THE P.E.D. ENGINEER SHALL SUBMIT TO THIS LATTER THE SITE SPECIFIC DRAWINGS FOR REVIEW.

E- THIS P.E.D. SHALL BEAR THE DATE AND ORIGINAL SEAL AND SIGNATURE OF THE PROFESSIONAL ENGINEER OF RECORD THAT PREPARED IT.

FLORIDA APPROVAL:
FL#38693

ABBREVIATIONS AND SYMBOLS

G.B. - GLASS BITE
D.L.O. - DAYLITE OPENING
F.H. - FRAME HEIGHT
F.W. - FRAME WIDTH
W/ - WITH
W/O - WITHOUT
O.C. - ON CENTER

SECTION NUMBER
SHEET NUMBER

December 25, 2021

SERIES LR-220 ALUMINUM HORIZONTAL SLIDING WINDOW-L.M.I
LINEA ROSSA LLC
1850 NW 84TH. AVENUE
SUITE 114, DORAL, FL 33126
TEL. 786 431 5554 info@linearossadesign.com

MCY ENGINEERING, INC.
GLAZING CONSULTANTS
12781 MIRAMAR PKWY. STE. 301
MIRAMAR, FL 33027 P. 305.271.0117
www.MCYengineering.com mcy@mcyengineering.com

Rev. No.	Date	Drawn By	Description
1.	11.03.2021	JAMES	FBC UPDATE

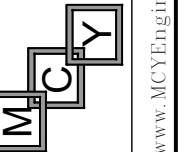
Drawn Date: 10/12/2021

Scale:

DRAWING NO. **AD21-36**

COVER

Sheet No. **1 OF 7**



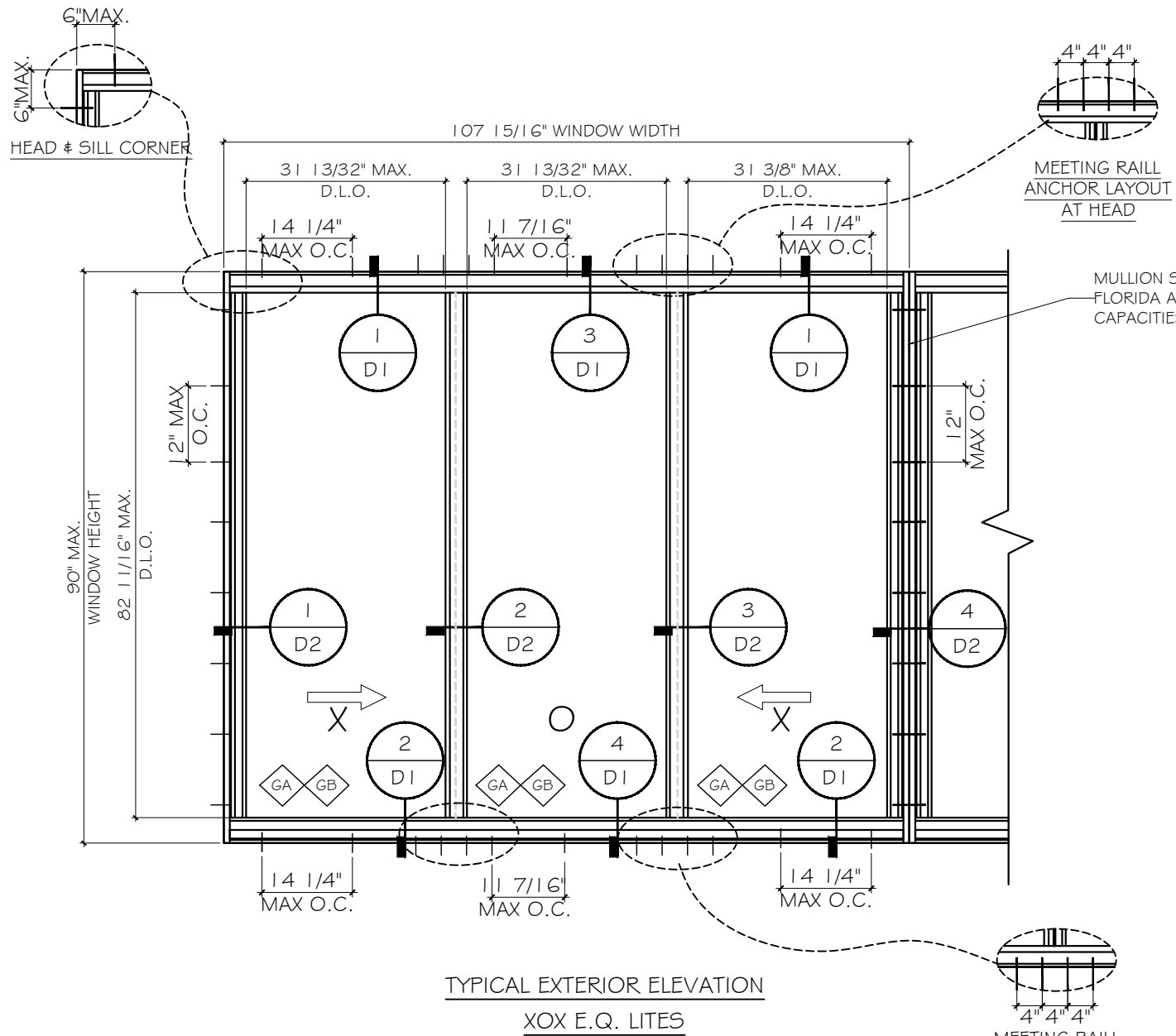
Rev. No.	Date	Drawn By	Description
1.	11.03.2021	JAMES	FBC UPDATE

Drawn Date: 10/12/2021 Scale:

DRAWING NO. AD21-36

E1

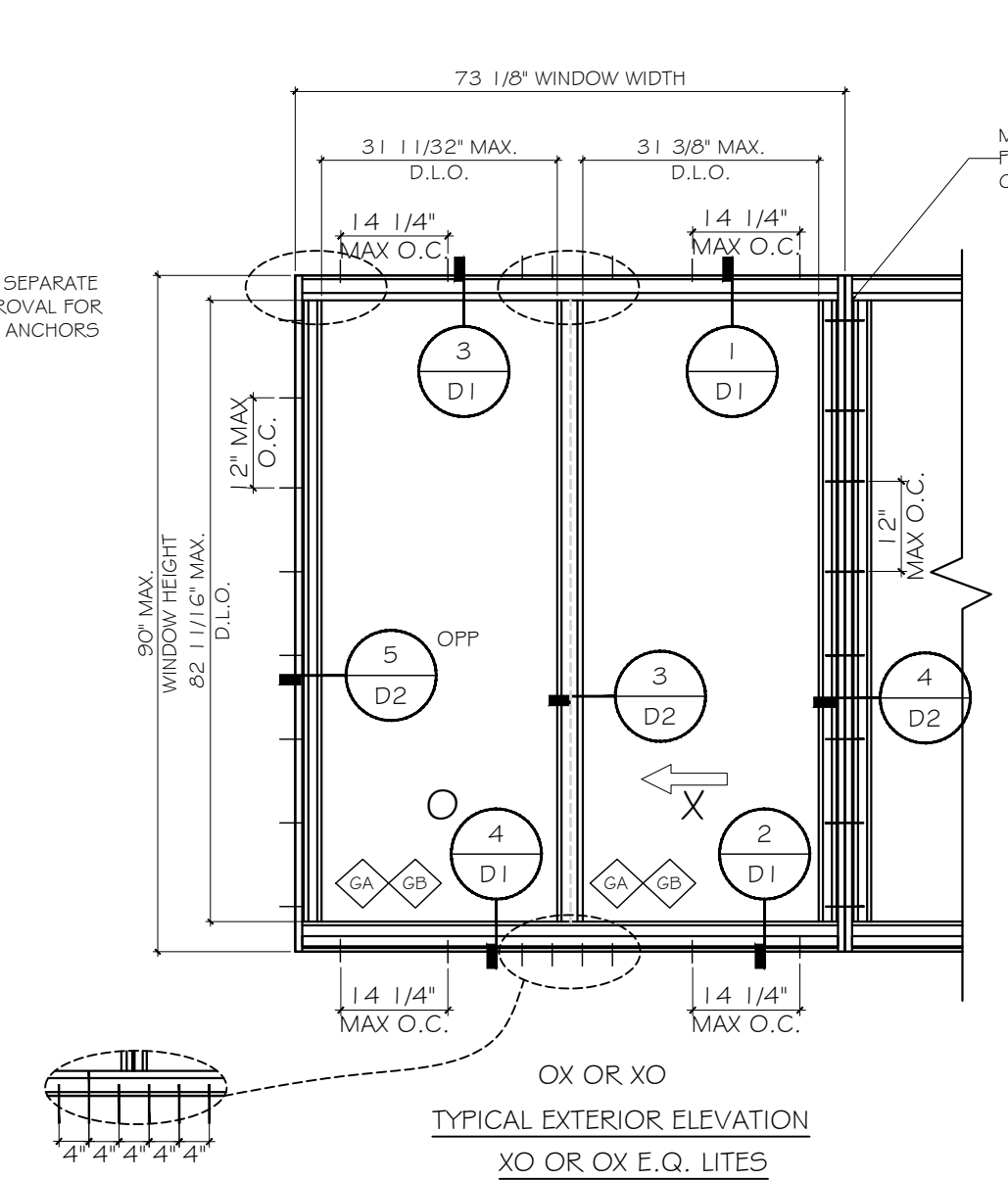
Sheet No. 2 OF 7



SEE CHARTS ON SHEET E2 FOR CAPACITIES FOR LIGHT & HEAVY REINFORCING AT MEETING RAIL

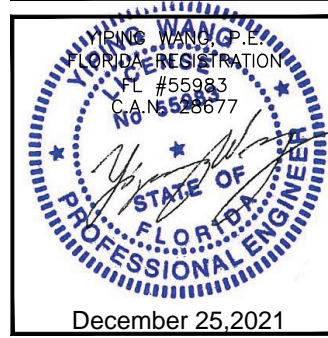
GLASS D.L.O. DIMS.
D.L.O. HEIGHT = WINDOW HEIGHT - 8.188"
D.L.O. WIDTH = WINDOW WIDTH - 6 3/8"

$$\text{AVERG. PANEL WIDTH} = \frac{\text{WDW. WIDTH}}{\# \text{ OF PANELS}}$$

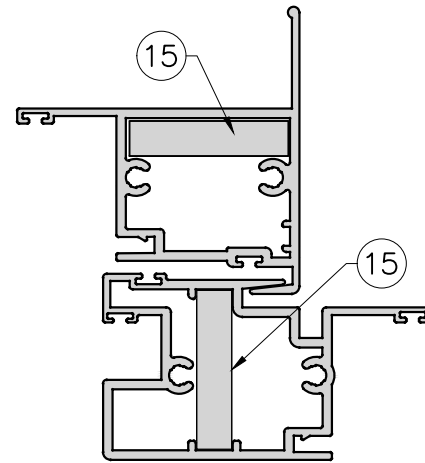


SEE CHARTS ON SHEET E2 FOR CAPACITIES FOR LIGHT & HEAVY REINFORCING AT MEETING RAIL

FLORIDA APPROVAL:
FL#38693

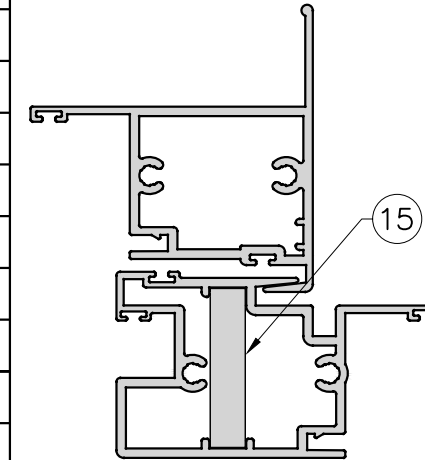


ALLOW. LOAD CAPCITIES - PSF		
WINDOW DIMS.		MTG
WINDOW HEIGHT	AVERG. PANEL WIDTH	HEAVY REINFORCEMENT.
(IN)	(IN)	(+)/(-)
60.0	30.0	100.0
	36.0	100.0
	42.0	100.0
	48.0	100.0
	54.0	100.0
66.0	30.0	100.0
	36.0	100.0
	42.0	100.0
	48.0	100.0
72.0	30.0	100.0
	36.0	100.0
	42.0	100.0
78.0	30.0	100.0
	36.0	100.0
	42.0	100.0
84.0	30.0	100.0
	36.0	100.0
	39.0	100.0
96.0	30.0	100.0
	36.0	100.0

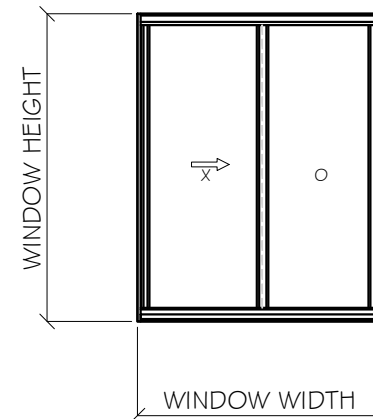
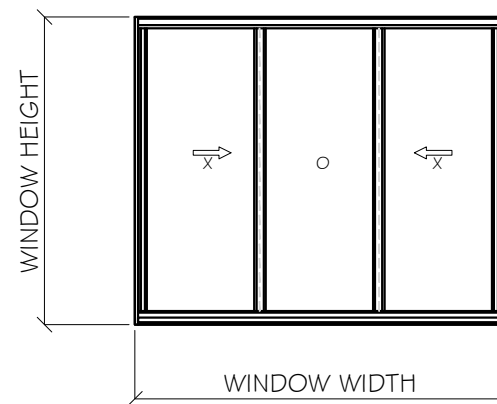


HEAVY REINF.
MEETING RAIL OPTION

ALLOW. LOAD CAPCITIES - PSF		
WINDOW DIMS.		MTG
WINDOW HEIGHT	AVERG. PANEL WIDTH	LIGHT REINFORCEMENT.
(IN)	(IN)	(+)/(-)
42.0	36.0	70.0
	42.0	70.0
	48.0	70.0
	54.0	70.0
	60.0	70.0
48.0	30.0	70.0
	36.0	70.0
	42.0	70.0
	48.0	70.0
54.0	30.0	70.0
	36.0	70.0
	42.0	70.0
60.0	30.0	70.0
	36.0	70.0
	42.0	70.0
66.0	30.0	70.0
	36.0	70.0
	39.0	70.0
70.0	30.0	70.0
	36.0	70.0

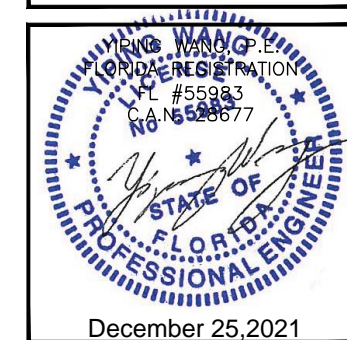


LIGHT REINF.
MEETING RAIL OPTION



$$\text{AVERG. PANEL WIDTH} = \frac{\text{WDW. WIDTH}}{\text{\# OF PANELS}}$$

FLORIDA APPROVAL:
FL#38693



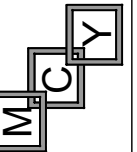
Rev. No.	Date	Drawn By	Description
1.	11.03.2021	JAMES	FBC UPDATE

Drawn Date: 10/12/2021 Scale:

DRAWING NO. AD21-36

Sheet No. E2

3 OF 7



Rev. No.	Date	Drawn By	Description
1.	11.03.2021	JAMES	FBC UPDATE

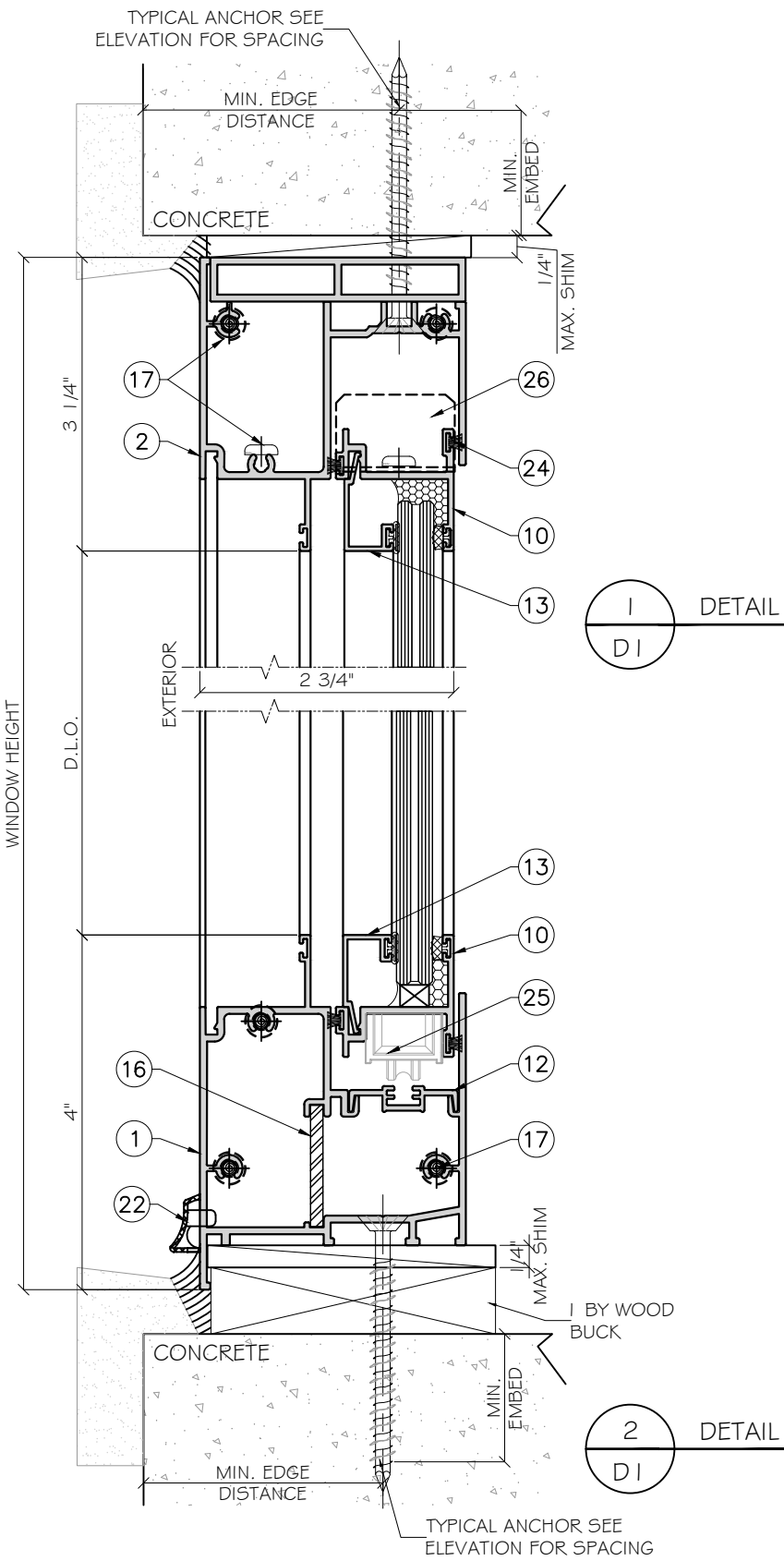
Drawn Date	Scale
10/12/2021	

DRAWING NO.	AD21-36
-------------	---------

Sheet No.	D1
-----------	----

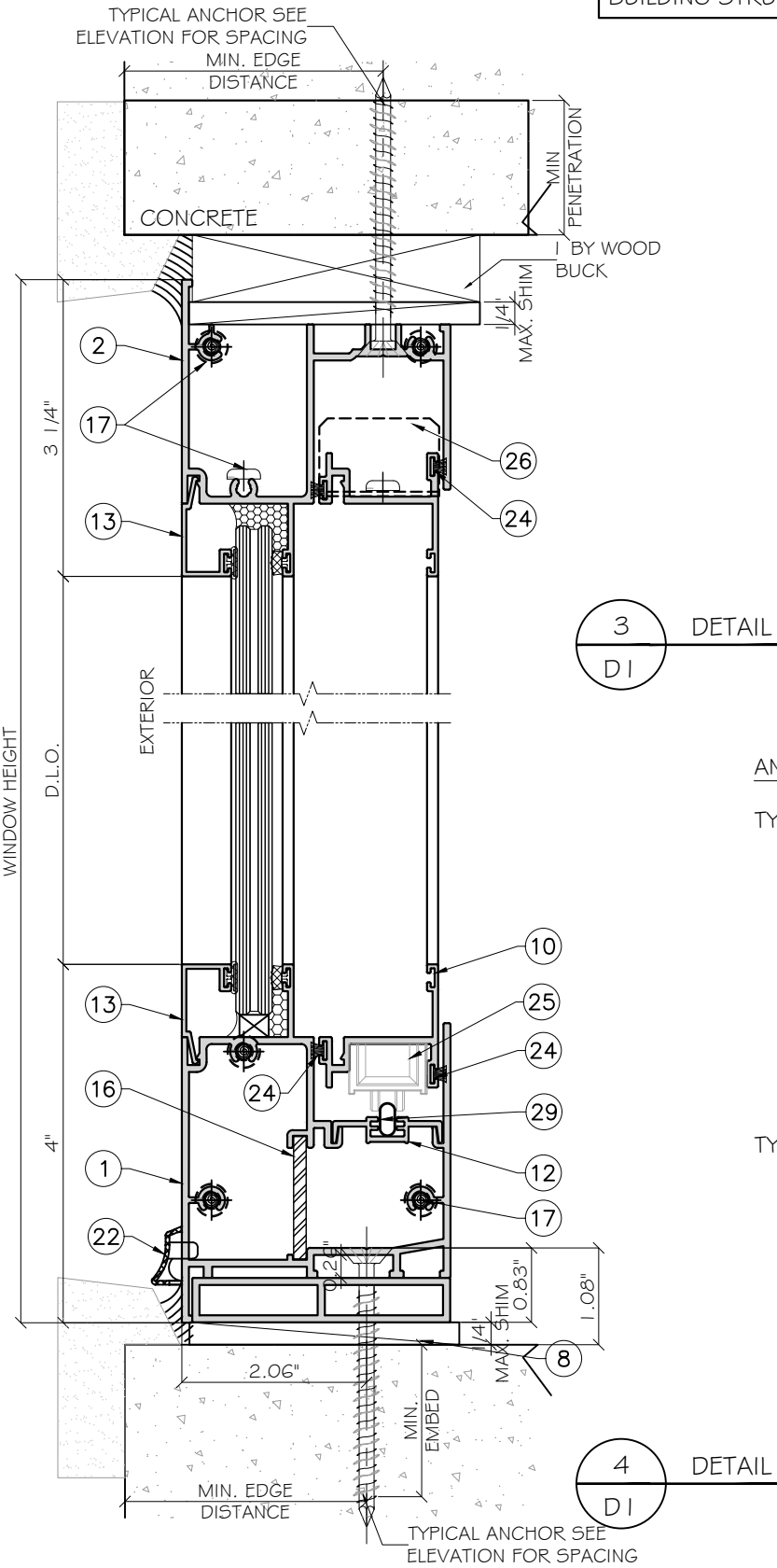
4 OF 7

WOOD BUCKS AND METAL STRUCTURE (NOT BY LINEA ROSSA LLC.) MUST SUSTAIN LOADS IMPOSED BY GLAZING SYSTEM AND TRANSFER THEM TO THE BUILDING STRUCTURE.



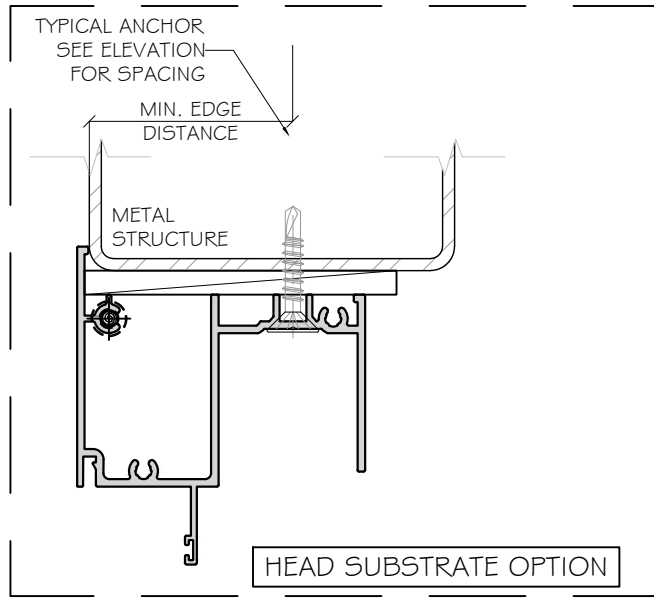
1
D1
DETAIL

2
D1
DETAIL



3
D1
DETAIL

4
D1
DETAIL



ANCHOR TYPES: (SEE ELEVATIONS FOR SPACING)

TYPE 'A' -- 1/4" DIA. ULTRACON+ BY 'DEWALT' (Fu=164 KSI, Fy=148 KSI)
INTO 2 BY WOOD BUCKS OR WOOD STRUCTURES.
1 1/2" MIN. PENETRATION INTO WOOD

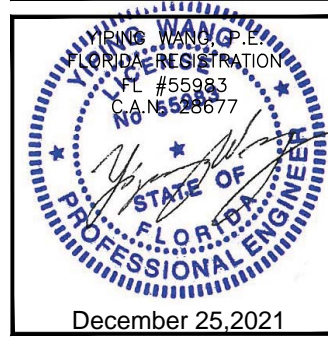
THRU 1 BY BUCKS INTO CONCRETE OR MASONRY
1 3/4" MIN. EMBED INTO CONCRETE
1 3/4" MIN. EMBED INTO BLOCKS (JAMB ONLY)

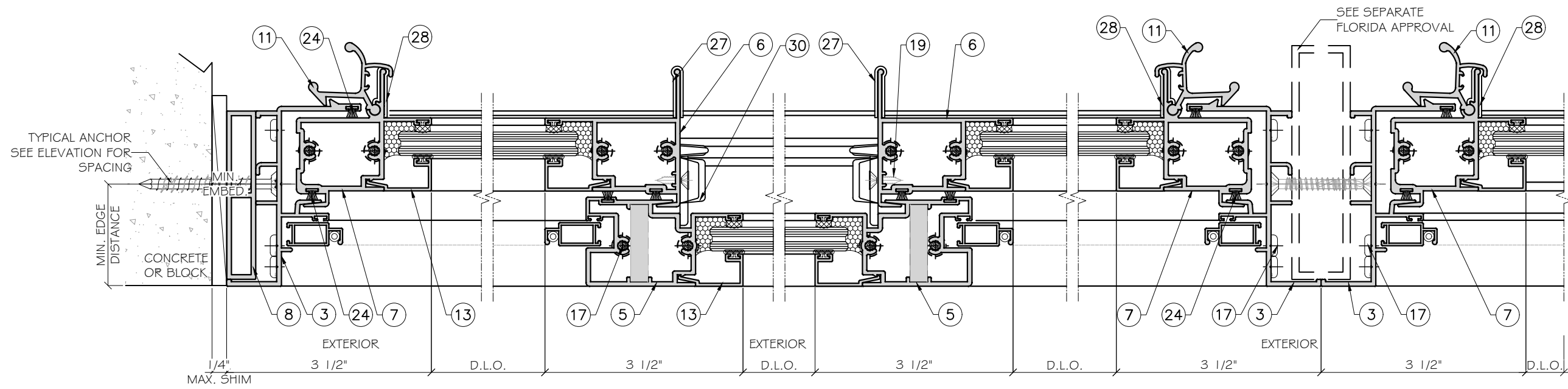
DIRECTLY INTO CONCRETE OR MASONRY
1 3/4" MIN. EMBED INTO CONCRETE
1 3/4" MIN. EMBED INTO BLOCKS (JAMB ONLY)

TYPE 'B' -- #14 DRILL FLEX -TEKS (GRADE 5) (Fu=120 KSI, Fy=92KSI)
INTO FBC APPROVED MULLIONS (1/8" THK. MIN.) (6063-T5 MIN.)
OR INTO METAL STRUCTURES, STEEL: 1/8" THK. MIN. (Fy=36 KSI MIN.)
(3) THREADS MIN. TO EXTEND BEYOND METAL THICKNESS
(STEEL IN CONTACT WITH ALUMINUM TO BE PLATED OR PAINTED)

EDGE DISTANCE REQUIRED:
INTO CONCRETE OR BLOCK= 2-1/2" MIN.
INTO METAL STRUCTURE = 3/4" MIN.
INTO WOOD STRUCTURE = 1" MIN.
WOOD AT HEAD OR JAMBS SG = 0.55 MIN.
CONCRETE AT HEAD, SILL OR JAMB f'c=3000PSI MIN.
C-90 HOLLOW/ FILLED BLOCK AT JAMB fm=2000 PSI MIN.

FLORIDA APPROVAL:
FL#38693



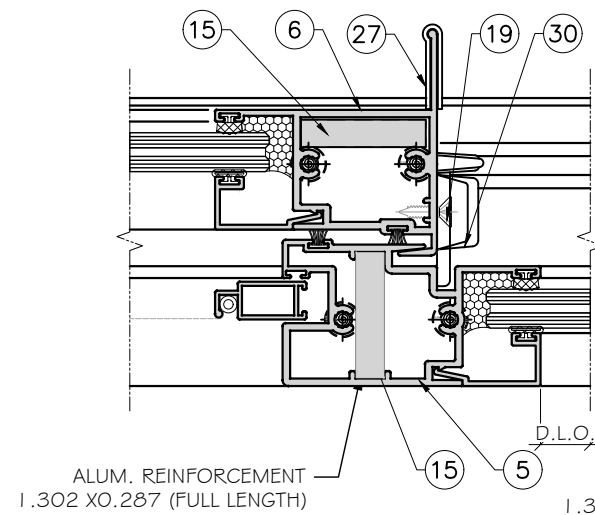
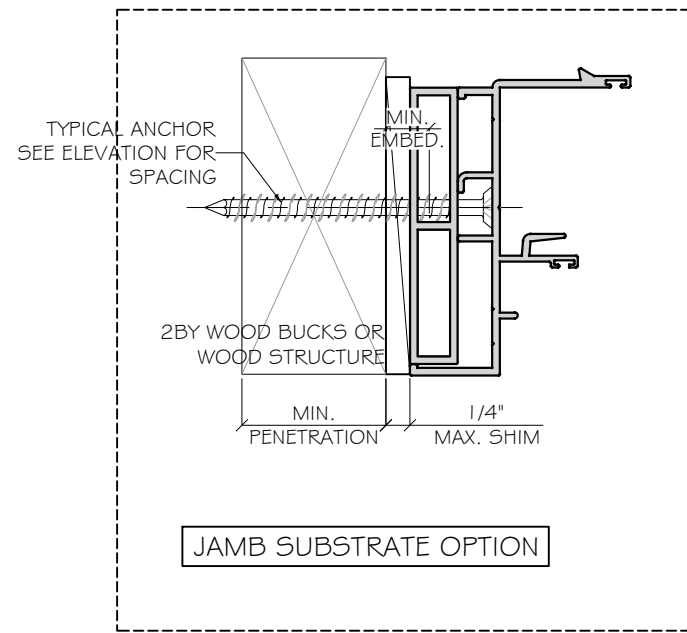


1
D2
DETAIL

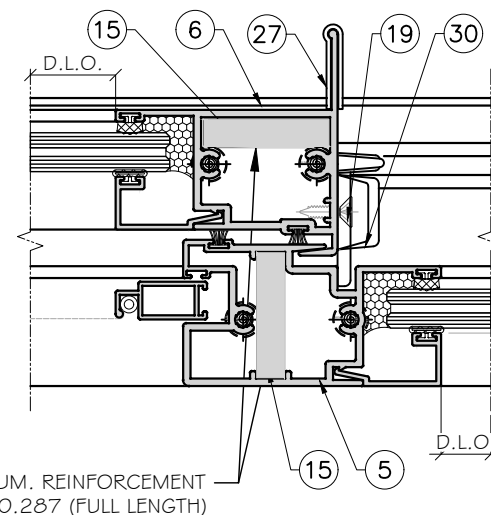
2
D2
DETAIL
LIGHT REINF.

3
D2
DETAIL
LIGHT REINF.

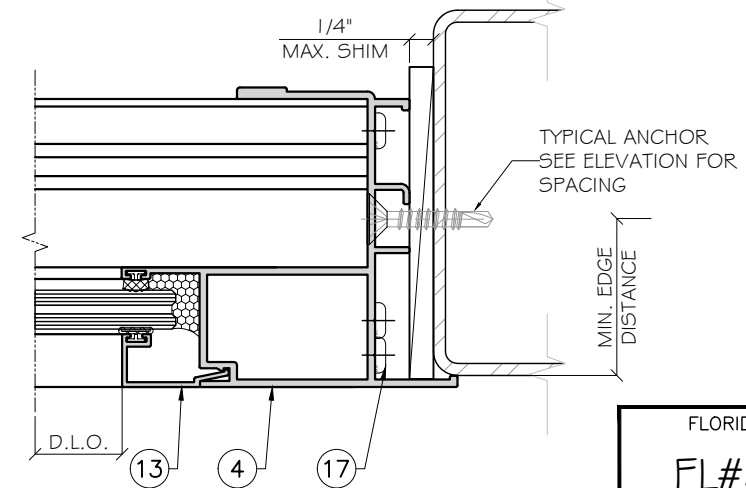
4
D2
DETAIL



2
D2
OPTION
HEAVY REINF.

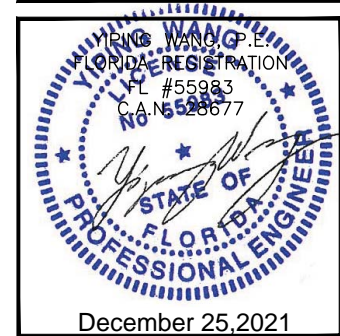


3
D2
OPTION
HEAVY REINF.



5
D2
DETAIL

FLORIDA APPROVAL:
FL#38693



SERIES LR-220 ALUMINUM HORIZONTAL SLIDING WINDOW-L.M.I

LINEA ROSSA LLC
1850 NW 84TH. AVENUE
SUITE 114, DORAL, FL 33126
TEL. 786 431 5554 info@linearossadesign.com

MCY ENGINEERING, INC.

GLAZING CONSULTANTS
12781 MIRAMAR PKWY. STE. 301
MIRAMAR, FL 33027 P. 305.271.0117
www.MCYEngineering.com mcy@mcyengineering.com

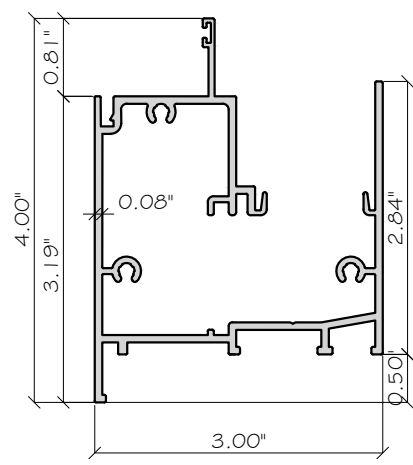
Rev. No.	Date	Drawn By	Description
1.	11.03.2021	JAMES	FBC UPDATE

Drawn Date	Scale
10/12/2021	

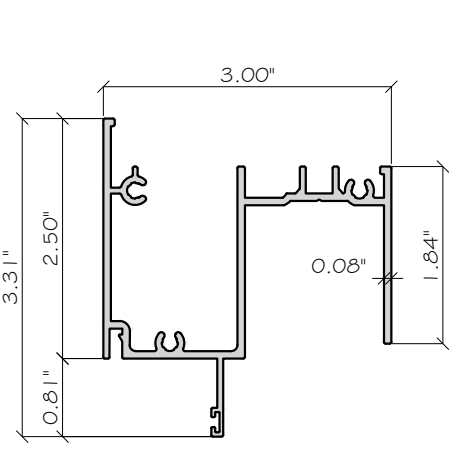
DRAWING NO.
AD21-36

Sheet No.
D2

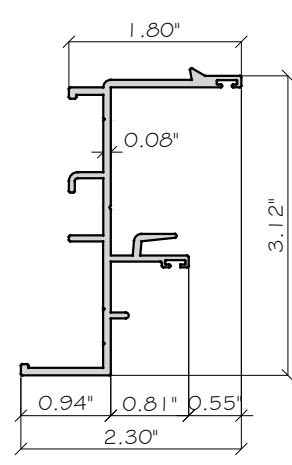
5 OF 7



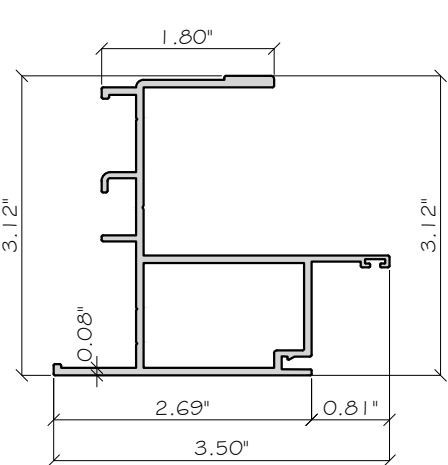
① LR220-01 FRAME SILL
ALUM. 6063-T5



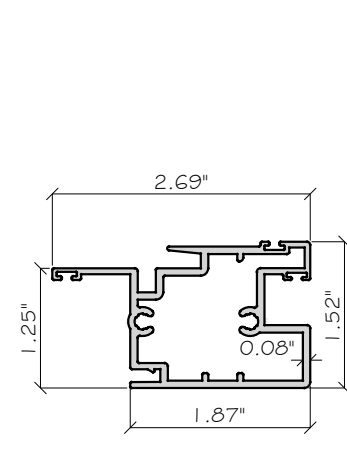
② LR220-05 FIXED MEETING RAIL
ALUM. 6063-T5



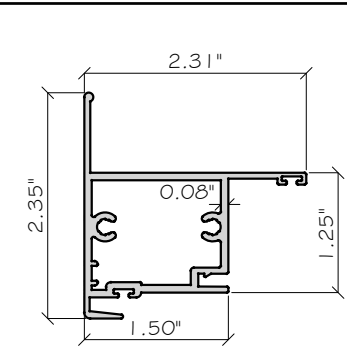
③ LR220-03 (FRAME JAMB VENT SIDE)
ALUM. 6063-T5



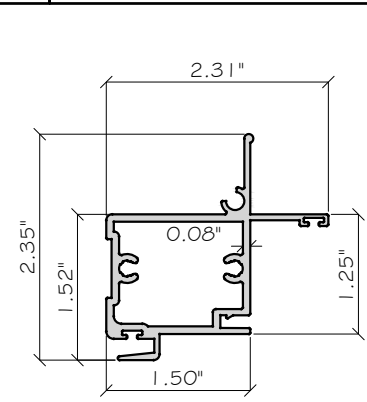
④ LR220-04 (FRAME JAMB FIXED SIDE)
ALUM. 6063-T5



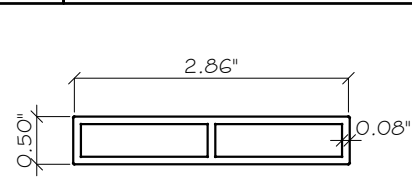
⑤ LR220-05 FIXED MEETING STILE
ALUM. 6063-T5



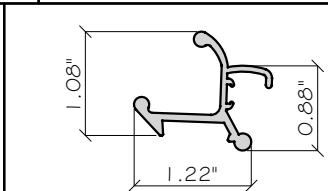
⑥ LR220-06 VENT INTERLOCK
ALUM. 6063-T5



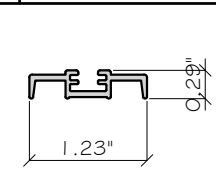
⑦ LR220-07 VENT JAMB STILE
ALUM. 6063-T5



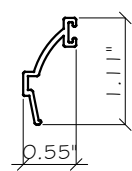
⑧ LR220-08 TUBE PROFILE (ADAPTOR)
ALUM. 6063-T5



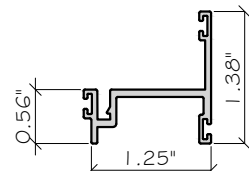
⑪ LR220-11 SPRING LOADED LATCH
ALUM. 6063-T5



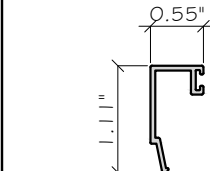
⑫ LR220-12 SILL TRACK
ALUM. 6063-T5



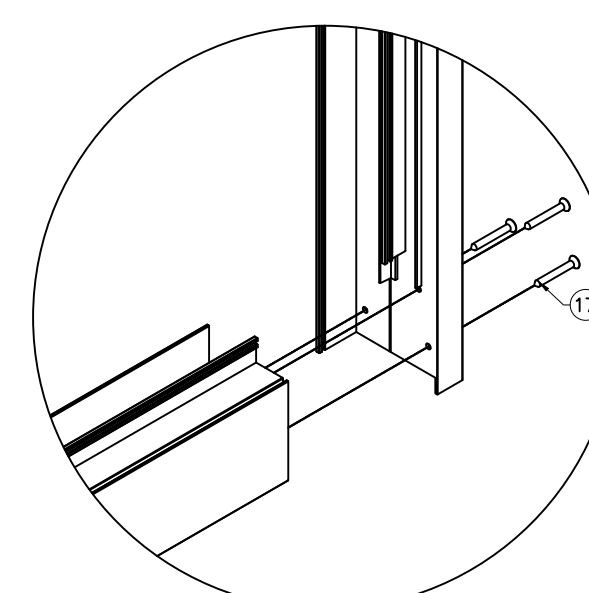
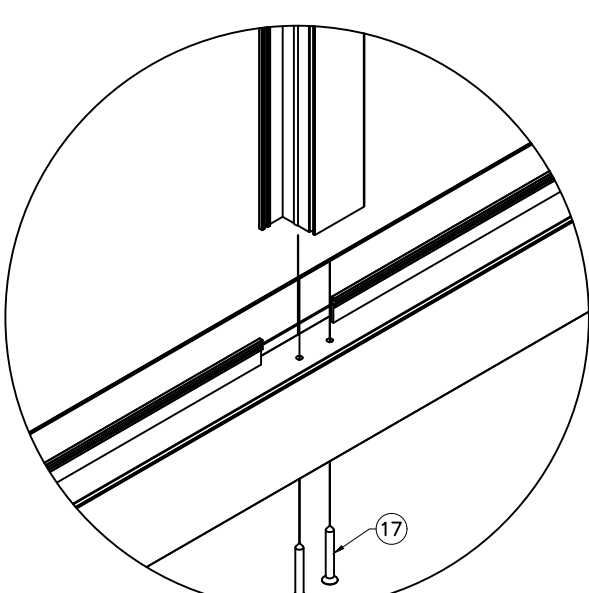
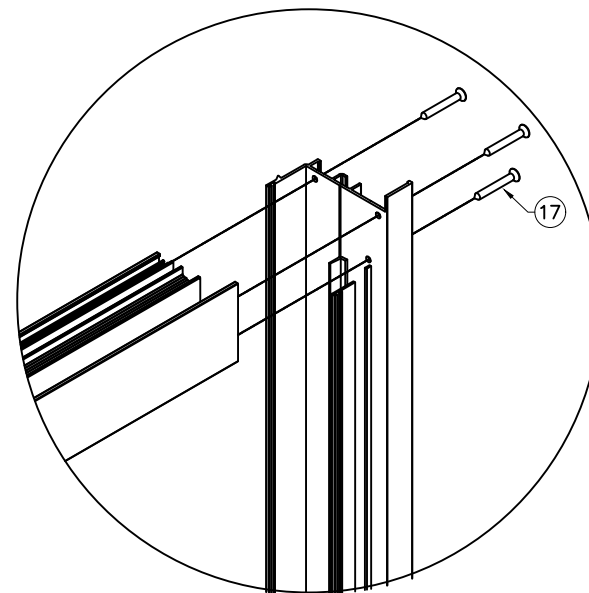
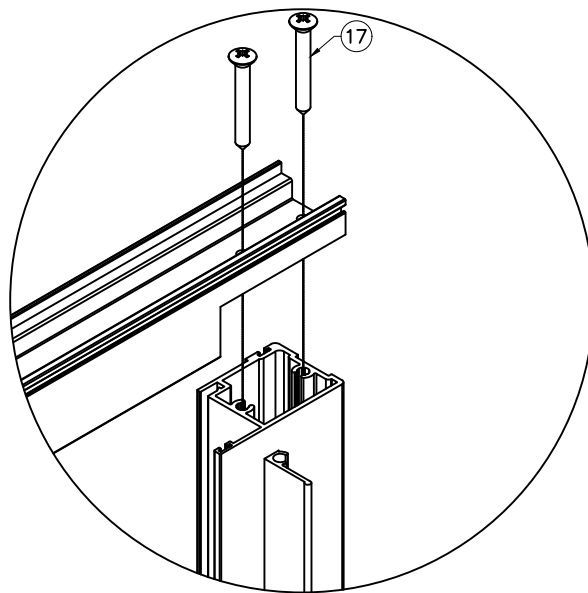
⑨ LR220-09 GLAZING BEAD (ALTERNATE)
ALUM. 6063-T5



⑩ LR220-10 VENT TOP/BOTTOM RAIL
ALUM. 6063-T5

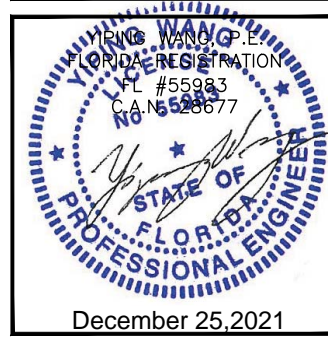


⑬ LR220-14 GLAZING BEAD
ALUM. 6063-T5



FRAME CORNER ASSEMBLY

FLORIDA APPROVAL:
FL#38693



Rev. No.	Date	Drawn By	Description
1.	11.03.2021	JAMES	FBC UPDATE

Drawn Date: 10/12/2021 Scale:

DRAWING NO. AD21-36

PART

Sheet No. 6 OF 7

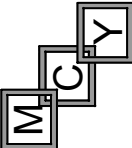
BILL OF MATERIALS

ITEM #	PROFILE	DESCRIPTION	MATERIAL	MANUFACTURER/REMARKS
1	LR220-01	FRAME SILL	6063-T5	LINEA ROSSA
2	LR220-02	FRAME HEAD	6063-T5	LINEA ROSSA
3	LR220-03	FRAME JAMB (VENT SIDE)	6063-T5	LINEA ROSSA
4	LR220-04	FRAME JAMB (FIXED SIDE)	6063-T5	LINEA ROSSA
5	LR220-05	FIXED MEETING STILE	6063-T5	LINEA ROSSA
6	LR220-06	VENT INTERLOCK	6063-T5	LINEA ROSSA
7	LR220-07	VENT JAMB STILE	6063-T5	LINEA ROSSA
8	LR220-08	TUBE PROFILE (ADAPTOR)	6063-T5	LINEA ROSSA
9	LR220-09	GLAZING BEAD (ALTERNATE)	6063-T5	LINEA ROSSA
10	LR220-10	VENT TOP/BOTTOM RAIL	6063-T5	LINEA ROSSA
11	LR220-11	SPRING LOADED LATCH	6063-T5	LINEA ROSSA
12	LR220-12	SILL TRACK	6063-T5	LINEA ROSSA
13	LR220-14	GLAZING BEAD	6063-T5	LINEA ROSSA
14				
15	-	1.302 X 0.287" REINFORCEMENT BAR-ALUMINUM.(FULL LENGTH)	6061-T6	-
16	-	1.367 X 0.140" REINFORCEMENT BAR-ALUMINUM. AT FRAME SILL (FULL LENGTH)	6061-T6	-
17	-	#10 X 1-1/2 PHP PH SMS FRAME & VENT ASSEMBLY SCREW	-	-
18	-	#10 X 4 PHP PH SMS BOTTOM FIX RAIL ASSEMBLY SCREW	-	-
19	-	#6 x 1/2" PHP FH SMS SWEEP LOCK ASSEMBLY SCREW(2)EACH	-	-
20	B4510092	EXTERIOR GLAZING GASKET	EPDM DUROMETER 80± SHORE A	LINEA ROSSA
21	B4510090	INTERIOR GLAZING GASKET(DUROM. ±5%)	EPDM DUROMETER 80± SHORE A	LINEA ROSSA
22	B6520017	DRAINAGE CAP WITH VALVE	PVC	LINEA ROSSA
23	-	SETTING BLOCK 1/4 X 5/8 X 2"LG. AT QUARTER POINTS	EPDM DUROMETER 80± SHORE A	LINEA ROSSA
24	B461303	0.187 X 0.200 WEATHERSTRIP PILE, AT VENT INTERLOCK, TOP/BOTTOM RAILS & JAMBS	-	LINEA ROSSA
25	B1110220	ADJUSTABLE ROLLER WITH END CAP (2) PER OPERABLE PANEL	PVC	LINEA ROSSA
26	B2310220	VENT TOP RAIL ADAPTOR W/ END CAP (RIGHT & LEFT)	PVC	LINEA ROSSA
27	B2310221	VENT INTERLOCK HANDLE PROTECTIVE END CAP (TOP & BOTTOM)	PVC	LINEA ROSSA
28	B2310222	VENT JAMB HANDLE PROTECTIVE END CAP (TOP & BOTTOM)	PVC	LINEA ROSSA
29	B5611214	TRACK RAIL	SS 316	LINEA ROSSA
30		SWEEP LATCH, AT 15-1/2" FROM EACH ENDS	ZAMAK	LINEA ROSSA
				LINEA ROSSA

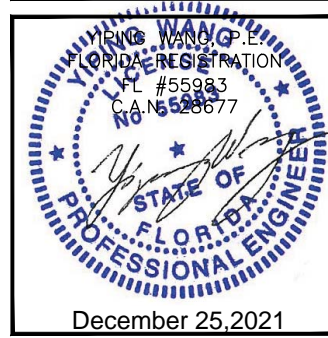


SERIES LR-220 ALUMINUM HORIZONTAL SLIDING WINDOW-L.M.I
LINEA ROSSA LLC
 1850 NW 84TH. AVENUE
 SUITE 114, DORAL, FL 33126
 TEL. 786 431 5554 info@linearossadesign.com

MCY ENGINEERING, INC.
 GLAZING CONSULTANTS
 12781 MIRAMAR PKWY. STE. 301
 MIRAMAR, FL 33027 P. 305.271.0117
 www.MCYEngineering.com mcy@mcyengineering.com



FLORIDA APPROVAL:
FL#38693



Drawn Date	Scale	Rev. No.	Date	Drawn By	Description
10/12/2021		1.	11.03.2021	JAMES WANG	FBC UPDATE
DRAWING NO. AD21-36					
BOM					
Sheet No. 7 OF 7					