

**SERIES-70**  
**ALUMINUM FIXED WINDOW**

DESIGN LOAD RATINGS FOR THESE WINDOWS TO BE AS PER CHARTS SHOWN ON SHEET 2.

APPROVAL APPLIES TO SINGLE UNITS OR SIDE BY SIDE COMBINATIONS OF FIX./FIX. OR FIXED WITH OTHER WINDOW TYPES IN MODULES OF TWO OR MORE WINDOWS USING F.B.C. APPROVED MULLIONS IN BETWEEN.

LOWER DESIGN PRESSURE FROM WINDOWS OR MULLION APPROVAL WILL APPLY TO ENTIRE SYSTEM.

THIS PRODUCT HAS BEEN DESIGNED AND TESTED TO COMPLY WITH THE REQUIREMENTS OF THE 2017 (6TH EDITION) FLORIDA BUILDING CODE INCLUDING HIGH VELOCITY HURRICANE ZONE (HVHZ).

1BY OR 2BY WOOD BUCKS & BUCK FASTENERS BY OTHERS, MUST BE DESIGNED AND INSTALLED ADEQUATELY TO TRANSFER APPLIED PRODUCT LOADS TO THE BUILDING STRUCTURE.

ANCHORS SHALL BE CORROSION RESISTANT, SPACED AS SHOWN ON DETAILS AND INSTALLED PER MANUF'S INSTRUCTIONS. SPECIFIED EMBEDMENT TO BASE MATERIAL SHALL BE BEYOND WALL DRESSING OR STUCCO.

A LOAD DURATION INCREASE IS USED IN DESIGN OF ANCHORS INTO WOOD ONLY.

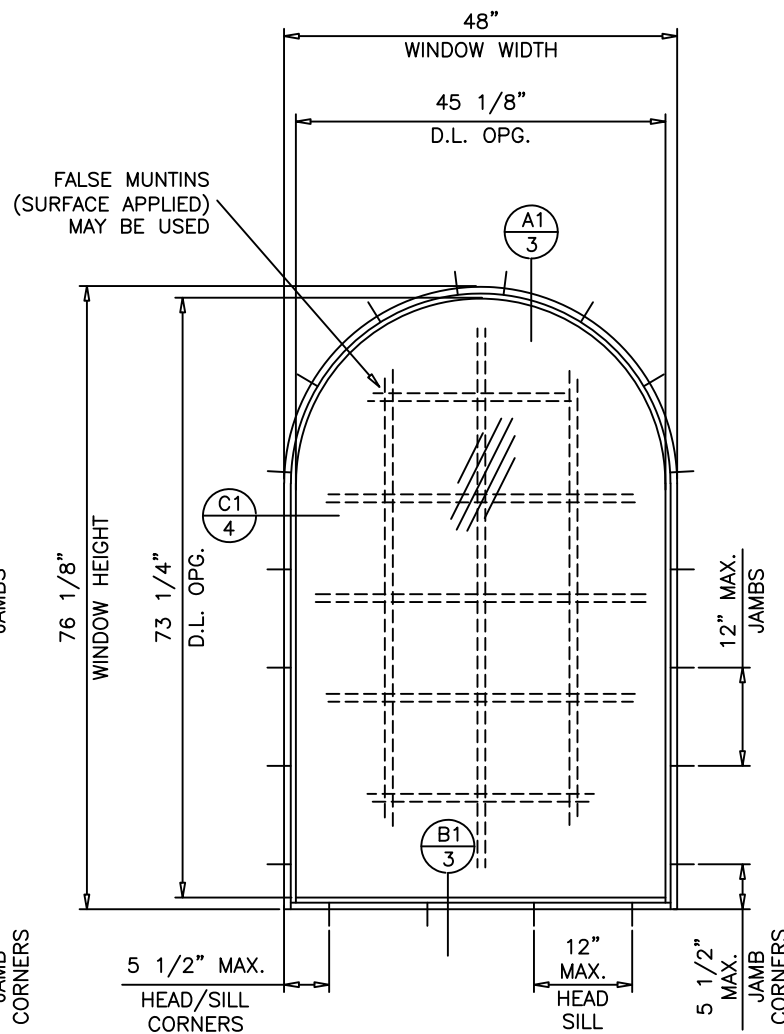
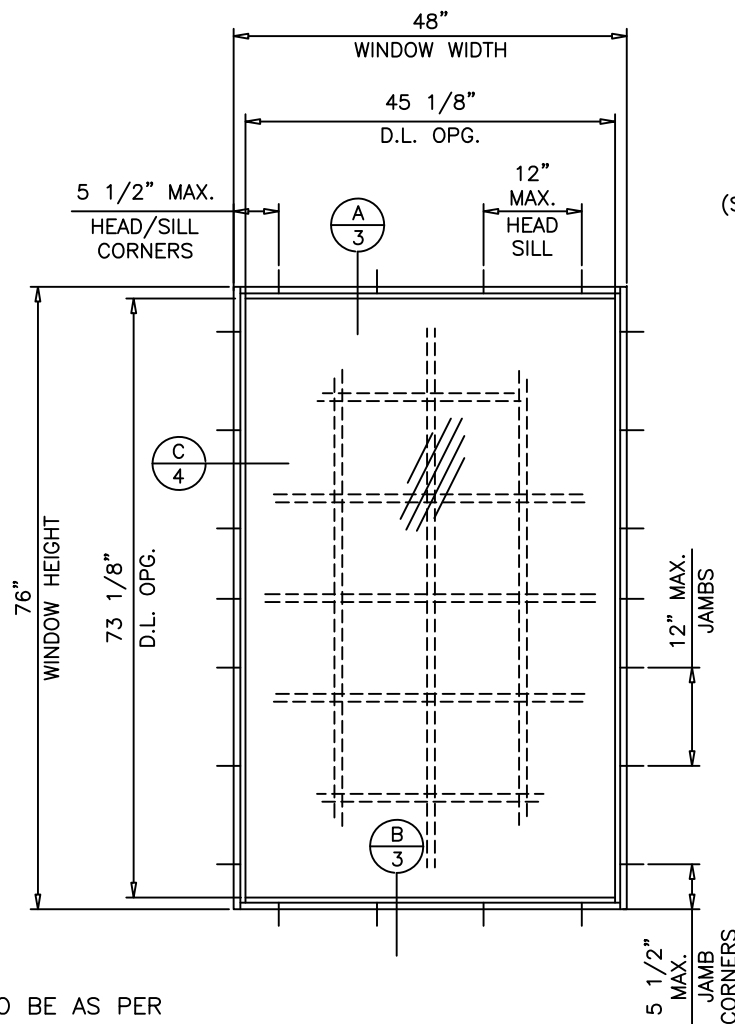
ALL SHIMS TO BE HIGH IMPACT, NON-METALLIC AND NON-COMPRESSIBLE.

MATERIALS INCLUDING BUT NOT LIMITED TO STEEL/METAL SCREWS, THAT COME INTO CONTACT WITH OTHER DISSIMILAR MATERIALS SHALL MEET THE REQUIREMENTS OF THE 2017 FLORIDA BLDG. CODE & ADOPTED STANDARDS.

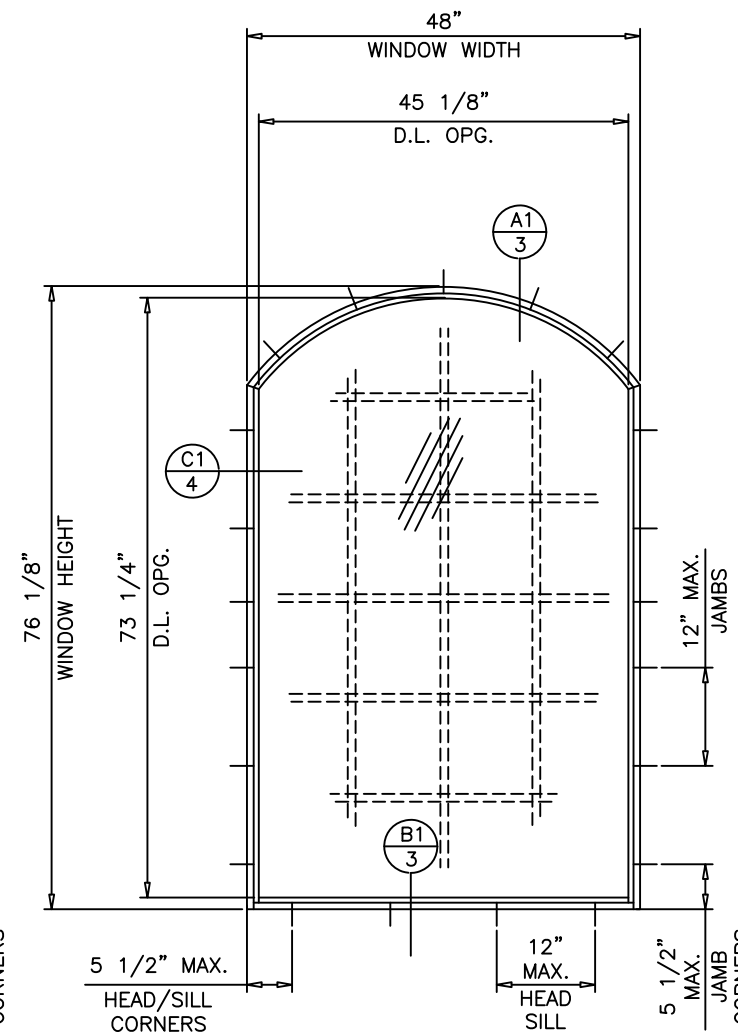
THIS PRODUCT APPROVAL IS GENERIC AND DOES NOT PROVIDE INFORMATION FOR A SITE SPECIFIC PROJECT, i.e. LIFE SAFETY OF THIS PRODUCT, ADEQUACY OF STRUCTURE RECEIVING THIS PRODUCT AND SEALING AROUND OPENING FOR WATER INFILTRATION RESISTANCE ETC. CONDITIONS NOT SHOWN IN THIS DRAWING ARE TO BE ANALYZED SEPARATELY, AND TO BE REVIEWED BY BUILDING OFFICIAL.

DESIGN LOADS SHOWN ARE BASED ON 'ALLOWABLE STRESS DESIGN (ASD)' FOR EQUIVALENT LOADS IN 'LOAD AND RESISTANCE FACTOR DESIGN (LRFD)' MULTIPLY 'ASD' LOADS BY 1.67 (ASD LOAD X 1.67 = LRFD LOAD)

MANUFACTURER'S LABEL SHALL BE LOCATED ON A READILY VISIBLE LOCATION IN ACCORDANCE WITH SECTION 1709.9.3 OF FLORIDA BUILDING CODE. LABELING TO COMPLY WITH SECTION 1709.9.2.



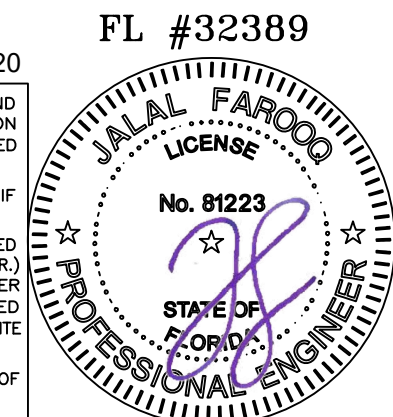
TYPICAL ELEVATION  
(TESTED UNITS)



THESE WINDOWS ARE RATED FOR LARGE & SMALL MISSILE IMPACT. SHUTTERS ARE NOT REQUIRED.

Sealed 6-9-2020

A- CONTRACTOR TO BE RESPONSIBLE FOR THE SELECTION, PURCHASE AND INSTALLATION OF THIS PRODUCT BASED ON THIS PRODUCT EVALUATION PROVIDED HE/SHE DOES NOT DEVIATE FROM THE CONDITIONS DETAILED ON THIS DOCUMENT.  
 B- THIS PRODUCT EVALUATION DOCUMENT WILL BE CONSIDERED INVALID IF ALTERED BY ANY MEANS.  
 C- SITE SPECIFIC PROJECTS SHALL BE PREPARED BY A FLORIDA REGISTERED ENGINEER OR ARCHITECT WHICH WILL BECOME THE ENGINEER OF RECORD (E.O.R.) FOR THE PROJECT AND WHO WILL BE RESPONSIBLE FOR THE PROPER USE OF THE P.E.D. ENGINEER OF RECORD, ACTING AS A DELEGATED ENGINEER TO THE P.E.D. ENGINEER SHALL SUBMIT TO THIS LATTER THE SITE SPECIFIC DRAWINGS FOR REVIEW.  
 D- THIS P.E.D. SHALL BEAR THE DATE AND ORIGINAL SEAL AND SIGNATURE OF THE PROFESSIONAL ENGINEER OF RECORD THAT PREPARED IT.



**AL-FAROOQ CORPORATION**  
ENGINEERS & PRODUCT DEVELOPMENT  
9360 SUNSET DRIVE, SUITE 220  
MIAMI, FLORIDA 33173 (C.A.N. 3538)  
TEL. (305) 264-8100 FAX. (305) 262-6978  
COMP-ANL\20-07F-ECO

SERIES-70 ALUMINUM FIXED WDW. (L.M.I.)  
ECO WINDOW SYSTEMS, LLC.  
8502 N.W. 80th STREET  
MEDLEY, FL. 33166  
TEL. (305) 885-5299 FAX (305) 885-5902

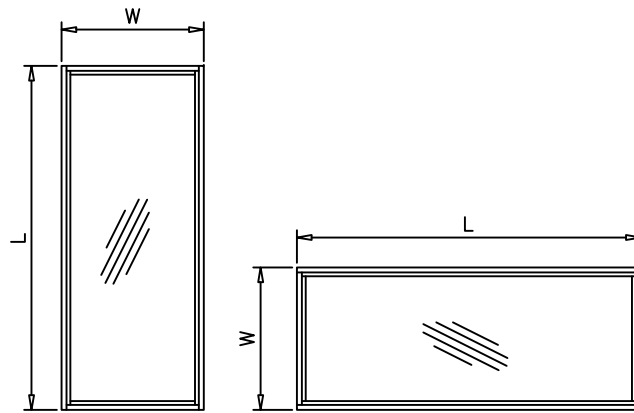
revisions:	no	date	description

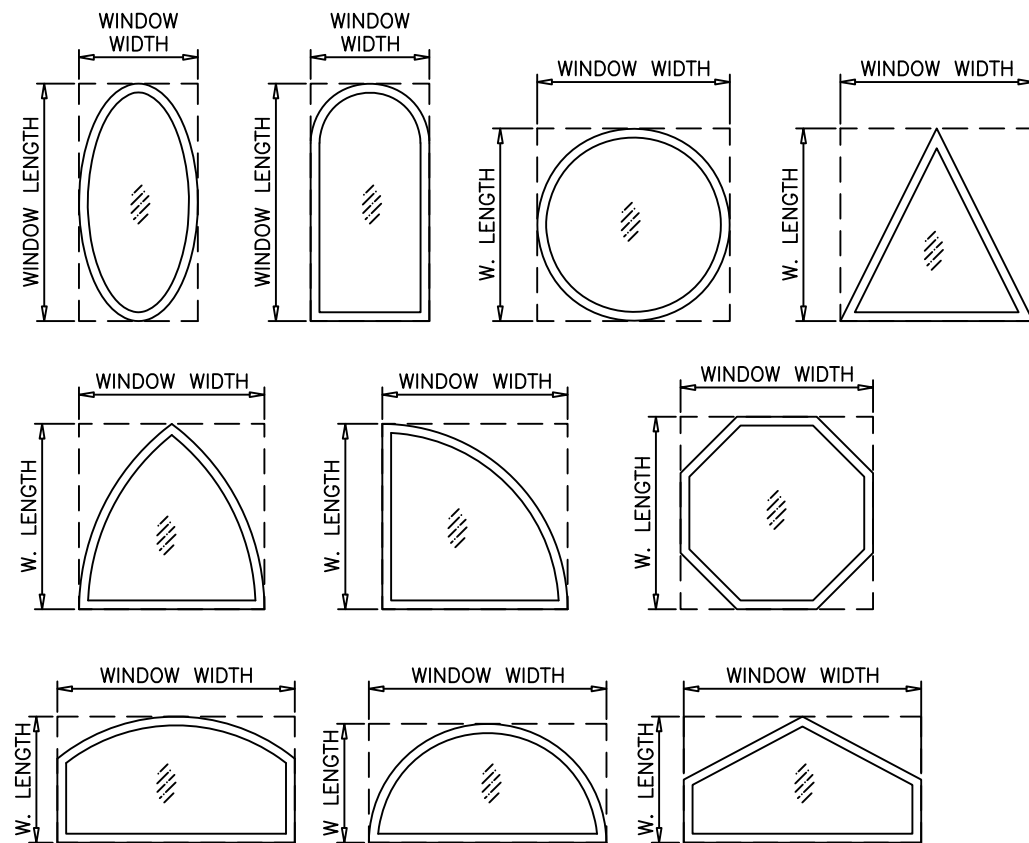
date:	02-05-20	scale:	1/2"=1'-0"	dr. by:	TARIQ	chk. by:	
drawing no.				20-07F			
sheet 1 of 5							

DESIGN LOAD CAPACITY - PSF			
FRAME DIMS.		5/16" LAM. GLASS	
WIDTH	HEIGHT	EXT.(+)	INT.(-)
19-1/8"	26"	60.0	60.0
26-1/2"		60.0	60.0
37"		60.0	60.0
53-1/8"		60.0	60.0
19-1/8"	38-3/8"	60.0	60.0
26-1/2"		60.0	60.0
37"		60.0	60.0
53-1/8"		60.0	60.0
19-1/8"	50-5/8"	60.0	60.0
26-1/2"		60.0	60.0
37"		60.0	60.0
53-1/8"		56.9	56.9
19-1/8"	56"	60.0	60.0
26-1/2"		60.0	60.0
37"		60.0	60.0
53-1/8"		54.2	54.2
19-1/8"	63"	60.0	60.0
26-1/2"		60.0	60.0
37"		60.0	60.0
53-1/8"		54.2	54.2
19-1/8"	72"	60.0	60.0
26-1/2"		60.0	60.0
37"		60.0	60.0
53-1/8"		60.0	60.0
19-1/8"	76"	60.0	60.0
26-1/2"		60.0	60.0
37"		60.0	60.0
53-1/8"		60.0	60.0

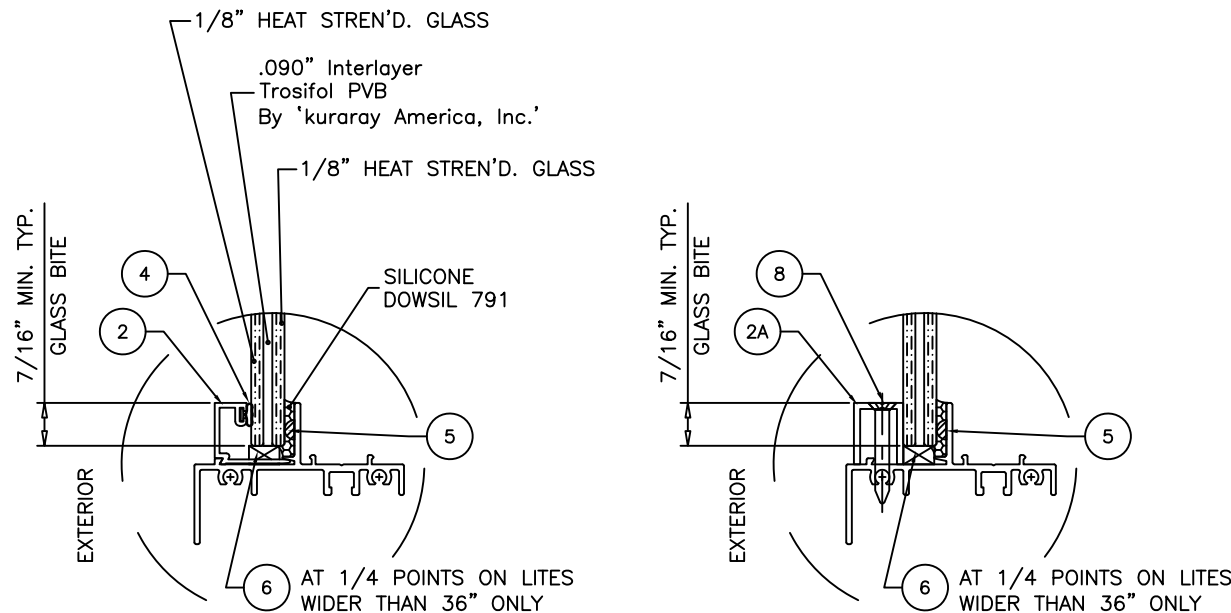
DESIGN LOAD CAPACITY - PSF			
FRAME DIMS.		5/16" LAM. GLASS	
WIDTH	HEIGHT	EXT.(+)	INT.(-)
24"	48"	60.0	60.0
30"		60.0	60.0
32"		60.0	60.0
36"		60.0	60.0
42"		60.0	60.0
48"		60.0	60.0
54"		60.0	60.0
60"		60.0	60.0
24"	60"	60.0	60.0
30"		60.0	60.0
32"		60.0	60.0
36"		60.0	60.0
42"		60.0	60.0
48"		60.0	60.0
54"		53.3	53.3
60"		48.0	48.0
24"	72"	60.0	60.0
30"		60.0	60.0
32"		60.0	60.0
36"		60.0	60.0
42"		60.0	60.0
48"		60.0	60.0
54"		60.0	60.0
60"		60.0	60.0
24"	76"	60.0	60.0
30"		60.0	60.0
32"		60.0	60.0
36"		60.0	60.0
42"		60.0	60.0
48"		60.0	60.0
54"		60.0	60.0
60"		60.0	60.0
24"	78"	60.0	60.0
30"		60.0	60.0
32"		60.0	60.0
36"		60.0	60.0
42"		60.0	60.0
48"		60.0	60.0
54"		60.0	60.0
60"		60.0	60.0
24"	84"	60.0	60.0
30"		60.0	60.0
32"		60.0	60.0
36"		60.0	60.0
42"		60.0	60.0
48"		60.0	60.0
54"		60.0	60.0
60"		60.0	60.0
24"	96"	60.0	60.0
30"		60.0	60.0
32"		60.0	60.0
36"		60.0	60.0
42"		60.0	60.0
48"		60.0	60.0
54"		60.0	60.0
60"		60.0	60.0
24"	104"	60.0	60.0
30"		60.0	60.0
32"		60.0	60.0
36"		60.0	60.0



NOTE:  
WIDTH AND LENGTH DIMENSIONS CAN BE  
ORIENTED VERTICALLY OR HORIZONTALLY  
AS SHOWN ABOVE.



ALLOWABLE LOADS FOR ALTERNATE SHAPES AS SHOWN ABOVE OR SIMILAR CAN BE  
VERIFIED BY INSCRIBING PICTURE WINDOW SHAPE WITHIN SQUARE OR RECTANGLE AS  
SHOWN IN DOTTED LINES AND OBTAINING ALLOWABLE LOADS FROM THOSE SHAPES.



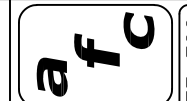
**GLAZING DETAILS**  
5/16" OVERALL LAM. GLASS

Sealed 6-9-2020



NOTE:  
GLASS CAPACITIES ON THIS SHEET ARE  
BASED ON ASTM E1300-09 (3 SEC. GUSTS).

FL #32389



**AL-FAROOQ CORPORATION**  
ENGINEERS & PRODUCT DEVELOPMENT  
9360 SUNSET DRIVE, SUITE 220  
MIAMI, FLORIDA 33173  
TEL. (305) 264-8100 FAX. (305) 262-6978  
(C.A.N. 3538)

SERIES-70 ALUMINUM FIXED WDW. (L.M.I.)

ECO WINDOW SYSTEMS, LLC.  
8502 N.W. 80th STREET  
MEDLEY, FL. 33166  
TEL. (305) 885-5299 FAX (305) 885-5902

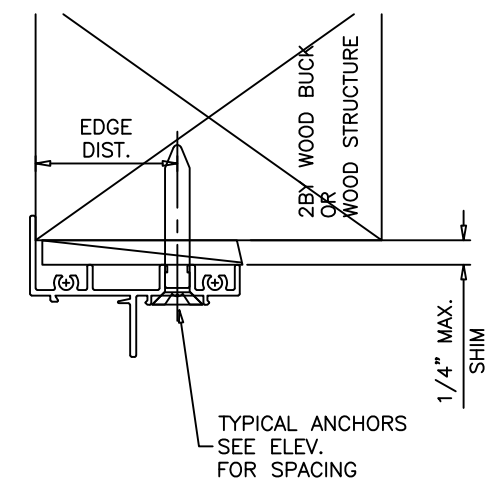
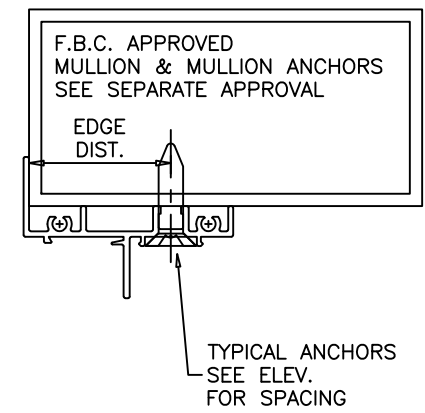
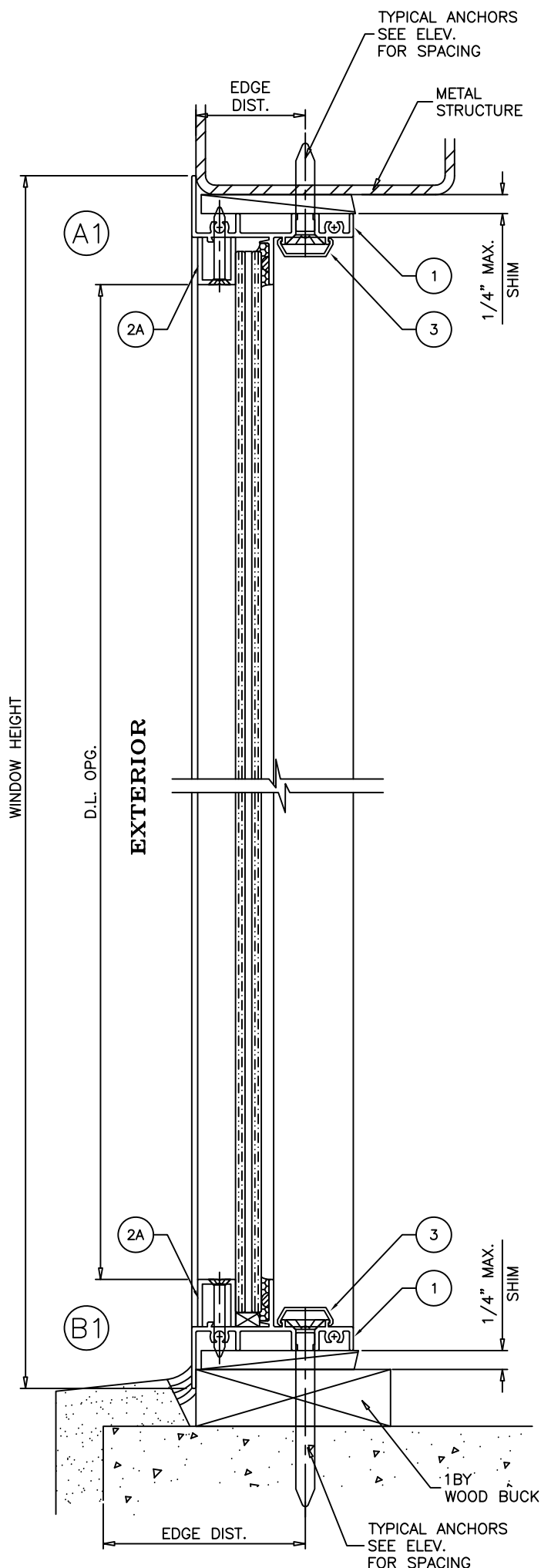
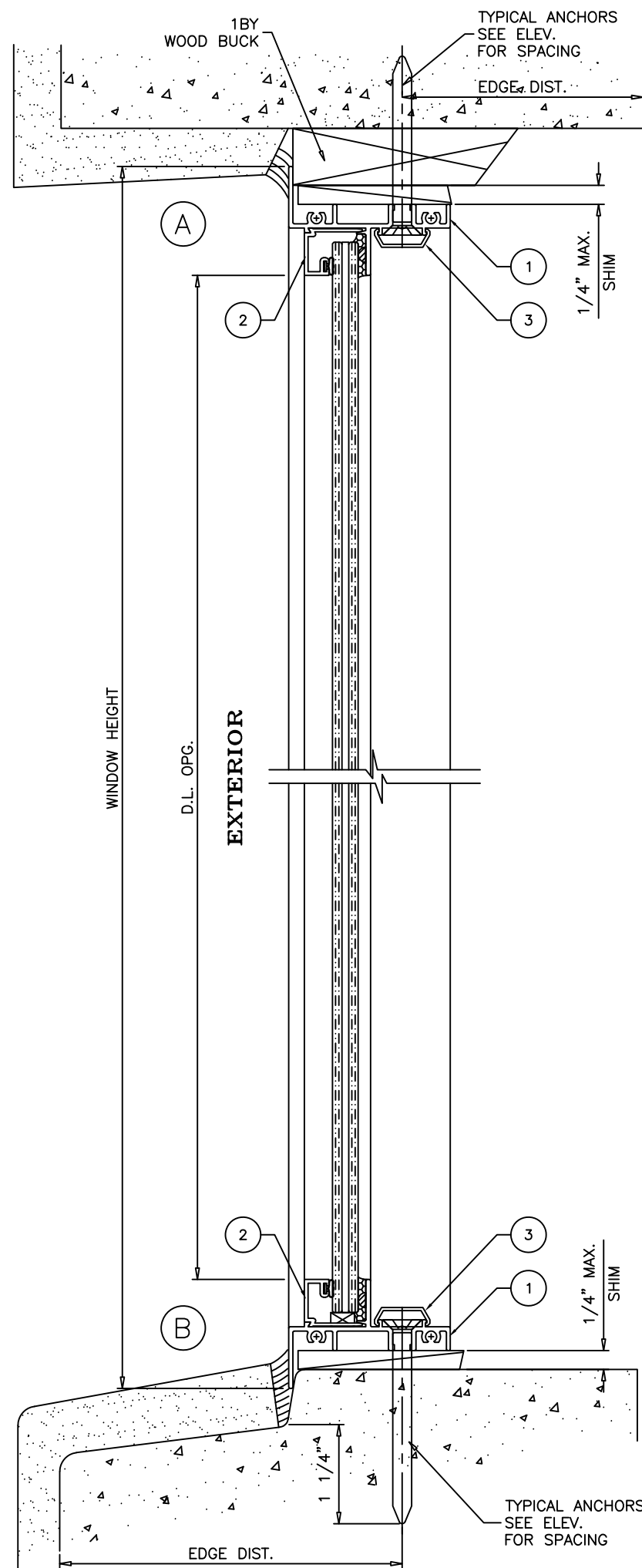
revisions:	no	date	description

date: 02-05-20	scale: 1/2" = 1"	dr. by: TARIQ	chk. by:
----------------	------------------	---------------	----------

drawing no.  
20-07F

sheet 2 of 5

COMP-ANL\20-07F-ECO



WOOD BUCKS AND METAL STRUCTURE NOT BY 'ECO WDW.' MUST SUSTAIN LOADS IMPOSED BY GLAZING SYSTEM AND TRANSFER THEM TO THE BUILDING STRUCTURE.

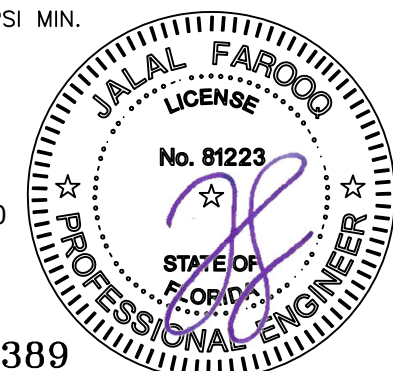
**TYPICAL ANCHORS:** SEE ELEV. FOR SPACING  
 1/4" DIA. ULTRACON BY 'ELCO' (Fu=177 KSI, Fy=155 KSI)  
 INTO 2BY WOOD BUCKS OR WOOD STRUCTURES  
 1-1/2" MIN. PENETRATION INTO WOOD (HEAD/SILL/JAMBS)  
 THRU 1BY BUCKS INTO CONC. OR BLOCKS  
 1-1/4" MIN. EMBED INTO CONCRETE (HEAD/SILL/JAMBS)  
 1-1/4" MIN. EMBED INTO BLOCKS (JAMBS)  
 DIRECTLY INTO CONCRETE OR BLOCKS  
 1-1/4" MIN. EMBED INTO CONCRETE (HEAD/SILL/JAMBS)  
 1-1/4" MIN. EMBED INTO BLOCKS (JAMBS)  
 1/4" DIA. TEKS OR SELF DRILLING SCREWS (GRADE 5 CRS)  
 INTO F.B.C. APPROVED MULLIONS  
 OR  
 INTO METAL STRUCTURES (HEAD/SILL/JAMBS)  
 (3) THREADS MIN. TO EXTEND BEYOND METAL THICKNESS  
 ALUMINUM: 1/8" THK. MIN. (6063-T5 MIN.)  
 STEEL: 1/8" THK. MIN. (Fy = 36 KSI MIN.)  
 (STEEL IN CONTACT WITH ALUMINUM TO BE PLATED OR PAINTED)

**TYPICAL EDGE DISTANCE**  
 INTO CONCRETE AND BLOCKS = 2-1/2" MIN.  
 INTO WOOD STRUCTURE = 1" MIN.  
 INTO METAL STRUCTURE = 3/4" MIN.

WOOD AT HEAD, SILL OR JAMBS SG = 0.55 MIN.  
 CONCRETE AT HEAD, SILL OR JAMBS f'c = 3000 PSI MIN.  
 C-90 HOLLOW/FILLED BLOCK AT JAMBS f'm = 2000 PSI MIN.

Sealed 6-9-2020

FL #32389



**afc**

**AL-FAROOQ CORPORATION**  
 ENGINEERS & PRODUCT DEVELOPMENT  
 9360 SUNSET DRIVE, SUITE 220  
 MIAMI, FLORIDA 33173  
 TEL. (305) 264-8100 FAX. (305) 262-6978

---

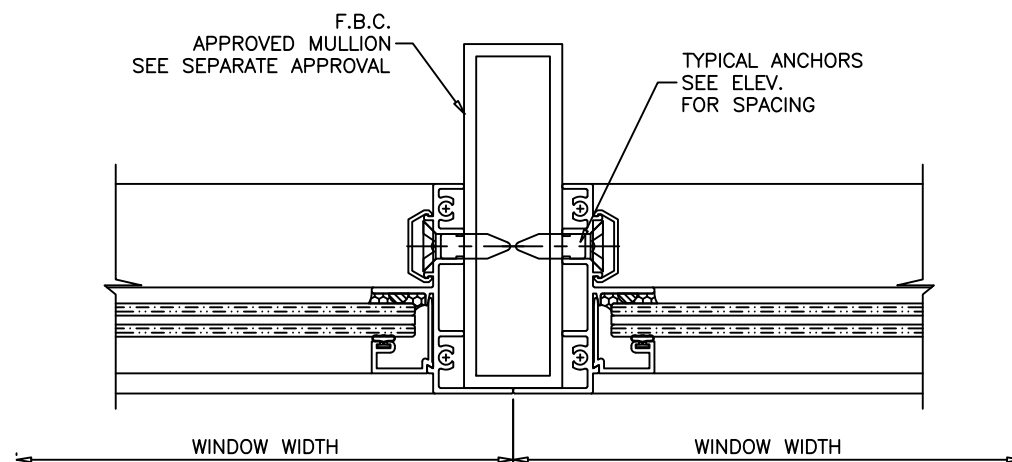
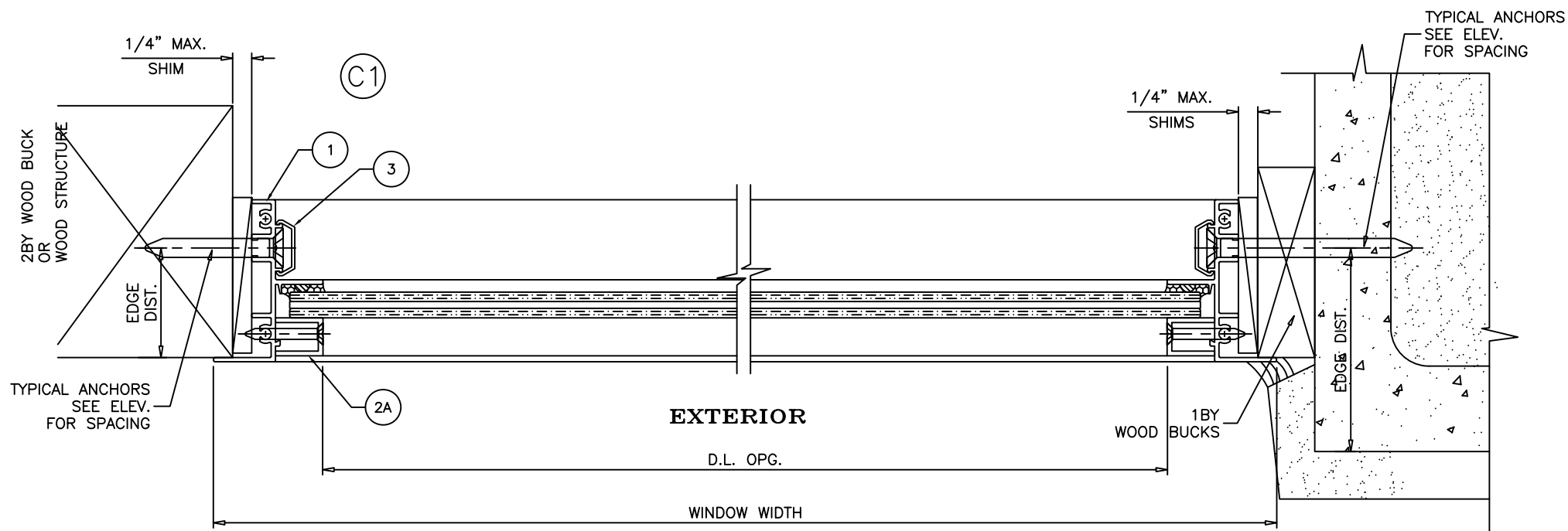
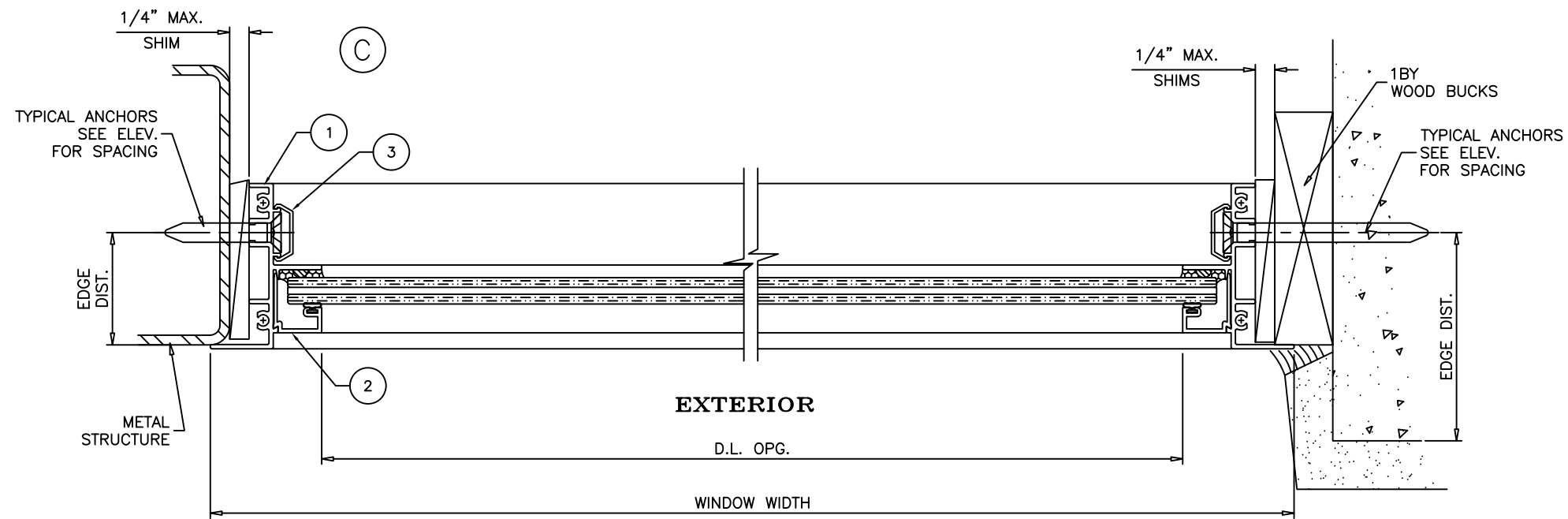
SERIES-70 ALUMINUM FIXED WDW. (L.M.I.)  
 ECO WINDOW SYSTEMS, LLC.  
 8502 N.W. 80th STREET  
 MEDLEY, FL. 33166  
 TEL. (305) 885-5299 FAX (305) 885-5902

revisions:	no	date	description

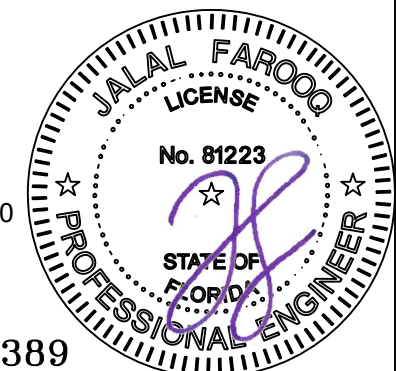
date: 02-05-20  
 scale: 1/2" = 1"  
 dr. by: TARIQ  
 chk. by:

drawing no.  
**20-07F**

sheet 3 of 5



Sealed 6-9-2020



FL #32389

**afc**

**AL-FAROOQ CORPORATION**  
 ENGINEERS & PRODUCT DEVELOPMENT  
 9360 SUNSET DRIVE, SUITE 220  
 MIAMI, FLORIDA 33173 (C.A.N. 3538)  
 TEL. (305) 264-8100 FAX. (305) 262-6978

SERIES-70 ALUMINUM FIXED WDW. (L.M.I.)  
 ECO WINDOW SYSTEMS, LLC.  
 8502 N.W. 80th STREET  
 MEDLEY, FL. 33166  
 TEL. (305) 885-5299 FAX (305) 885-5902

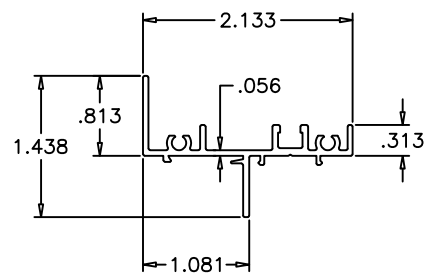
revisions:	no	date	description

date: 02-05-20  
 scale: 1/2" = 1"  
 dr. by: TARIQ  
 chk. by:

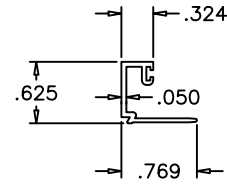
drawing no.  
 20-07F

sheet 4 of 5

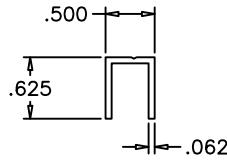
COMP-ANL\20-07F-ECO



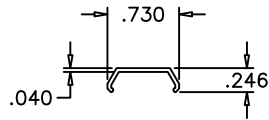
① WINDOW FRAME



② GLAZING BEAD  
(RECT. OR SQUARE WDW.)



②A GLAZING BEAD  
(CIRCULAR WDW.)

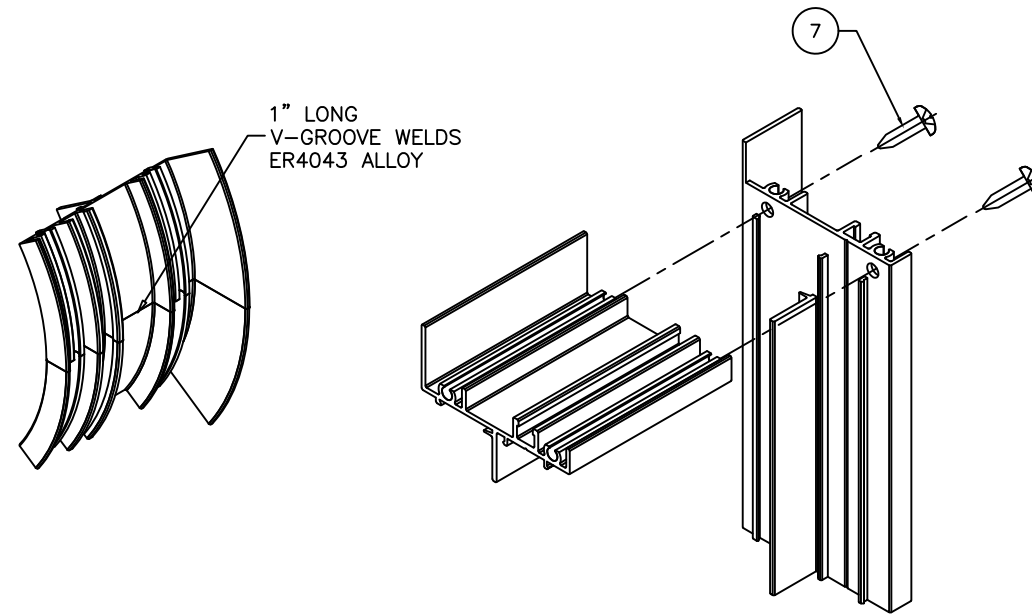


③ SCREW COVER

ITEM	PART #	QUANTITY	DESCRIPTION	MATERIAL	MANF./SUPPLIER/REMARKS
1	E71	4	WINDOW FRAME	6063-T6	-
2	E58	4	GLAZING BEAD (RECT. OR SQUARE WDW.)	6063-T6	-
2A	E72	4	GLAZING BEAD (CIRCULAR WDW.)	6063-T6	-
3	E162	AS REQD.	SCREW COVER	RIGID PVC	-
4	E203	AS REQD.	GLAZING BEAD BULB	SANTOPRENE	ULTRAFAB, DUROMETER 65±5
5	FLB-50	AS REQD.	GLASS SPACER	SILICONE	FRANK LOWE
6	-	2/ LITE	SETTING BLOCK	EPDM	DUROMETER 80±5 SHORE A
7	#8 X 1"	AS REQD.	FRAME ASSEMBLY SCREWS	ST/ST	P.H. SMS
8	#8 X 1"	AS REQD.	GLAZING BEAD FASTENERS, AT 3" FROM ENDS & 12" O.C.	ST/ST	F.H. SMS

**SEALANT:**

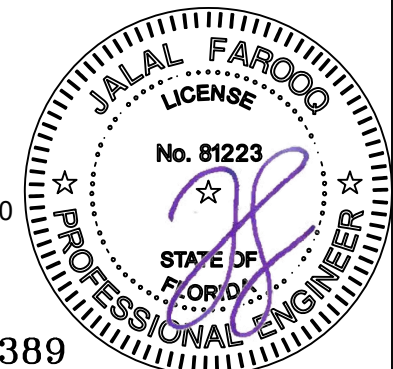
ALL JOINTS AND FRAME CONNECTIONS SEALED WITH JOINT SEALER.



CIRCULAR WINDOWS

RECT. OR SQUARE WINDOWS

Sealed 6-9-2020



FL #32389



**AL-FAROOQ CORPORATION**  
ENGINEERS & PRODUCT DEVELOPMENT  
9360 SUNSET DRIVE, SUITE 220  
MIAMI, FLORIDA 33173 (C.A.N. 3538)  
TEL. (305) 264-8100 FAX. (305) 262-6978

SERIES-70 ALUMINUM FIXED WDW. (L.M.I.)  
ECO WINDOW SYSTEMS, LLC.  
8502 N.W. 80th STREET  
MEDLEY, FL. 33166  
TEL. (305) 885-5299 FAX (305) 885-5902

revisions:	no	date	by	description

date: 02-05-20	scale: 1/2" = 1"	dr. by: TARIQ	chk. by:
----------------	------------------	---------------	----------

drawing no.  
20-07F

sheet 5 of 5

COMP-ANL\20-07F-ECO