

6/19/2018 1:02 PM

s:\projects\euro-wall systems\fbc-18-0417 - fbc submittal - lift and slide door - impact\dwgs\ews009.dwg

# Euro-Wall Systems, LLC

## EURO VISTA SLIDE DOOR

### (IMPACT) (HVHZ)

GENERAL NOTES:

1. THE PRODUCT SHOWN HEREIN IS DESIGNED AND MANUFACTURED TO COMPLY WITH THE CURRENT FLORIDA BUILDING CODE (FBC), **INCLUDING** HVHZ AND HAS BEEN EVALUATED ACCORDING TO THE FOLLOWING:
  - TAS 201-94
  - TAS 202-94
  - TAS 203-94
2. ADEQUACY OF THE EXISTING STRUCTURAL CONCRETE/MASONRY, 2X AND METAL STUD FRAMING AS A MAIN WIND FORCE RESISTING SYSTEM CAPABLE OF WITHSTANDING AND TRANSFERRING APPLIED PRODUCT LOADS TO THE FOUNDATION IS THE RESPONSIBILITY OF THE ENGINEER OR ARCHITECT OF RECORD FOR THE PROJECT OF INSTALLATION.
3. 1X AND 2X BUCKS (WHEN USED) SHALL BE DESIGNED AND ANCHORED TO PROPERLY TRANSFER ALL LOADS TO THE STRUCTURE. BUCK DESIGN AND INSTALLATION IS THE RESPONSIBILITY OF THE ENGINEER OR ARCHITECT OF RECORD FOR THE PROJECT OF INSTALLATION.
4. THE INSTALLATION DETAILS DESCRIBED HEREIN ARE GENERIC AND MAY NOT REFLECT ACTUAL CONDITIONS FOR A SPECIFIC SITE. IF SITE CONDITIONS CAUSE INSTALLATION TO DEVIATE FROM THE REQUIREMENTS DETAILED HEREIN, A LICENSED ENGINEER OR ARCHITECT SHALL PREPARE SITE SPECIFIC DOCUMENTS FOR USE WITH THIS DOCUMENT.
5. APPROVED IMPACT PROTECTIVE SYSTEM IS **NOT REQUIRED** TO PROTECT THIS PRODUCT.
6. DOOR FRAME MATERIAL: *EXTRUDED ALUMINUM (6063-T5)*.
7. GLASS MEETS THE REQUIREMENTS OF ASTM E1300 GLASS CHARTS. SEE SHEET 1 FOR GLAZING DETAILS.
8. APPROVED CONFIGURATIONS:

2 PANEL - OX, XO, XX

3 PANEL - OOX, XOO, XOX, XXO, OXX, XXX

4 PANEL - OXXO, OXXX, XXXO, OXXP, PXXO, PXXP, XXOO, XOOX, OOXX, XXXX

5 PANEL - OXXXP, PXX XO, XXOOO, OOOXX, XXXXX, OXXXX, XXXXO

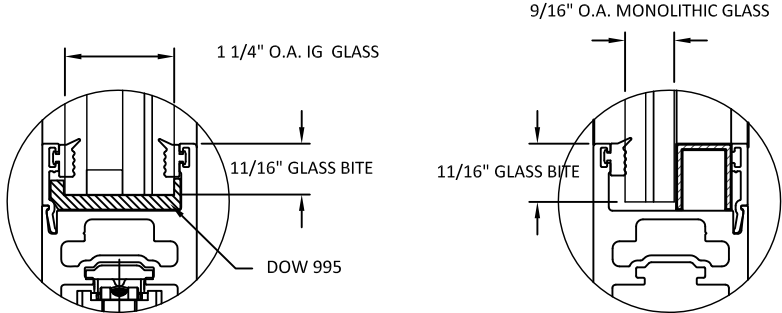
6 PANEL - OXXXXO, OXXXXP, XXXXXX, XXXOOO, OOOXXX, OOXXXXX, XOOOOX, XXXXO, OXXXX, XXXXX

7 PANEL - XXXXXXX, OXXXXX, XXXXXO, OXXXXO

8 PANEL - OXXXXXO, OXXXXXX, XXXXXO, XXXXXXX

POCKET PANELS CAN BE ADDED TO ALL CONFIGURATIONS AND ARE LIMITED AS FOLLOWS: +/-55 PSF FOR UP TO 50 SQUARE FEET AND +/-40 PSF UP TO 70 SQUARE FEET.

TABLE OF CONTENTS		
SHEET	REVISION	SHEET DESCRIPTION
1	-	GENERAL NOTES & GLAZING DETAILS
2	-	ELEVATIONS & PRESSURE TABLE
3	-	ANCHOR LAYOUT
4	-	ELEVATIONS & PRESSURE TABLE
5	-	ANCHOR LAYOUT
6	-	VERTICAL SECTIONS
7	-	HORIZONTAL SECTIONS
8	-	HORIZONTAL SECTIONS
9	-	INSTALLATION NOTES, ANCHOR DETAILS & SCHEDULE



GLAZING DETAIL 1

GLAZING DETAIL 2

- NOTE:
1. ALL GLAZING CONFIGURATIONS SHALL COMPLY WITH SAFETY GLAZING REQUIREMENTS OUTLINED IN CURRENT FBC AND ASTM E 1300 GLASS CHART REQUIREMENTS.
2. SETTING BLOCK SHOULD BE 70-90 DUROMETER AS PER CH 24 OF THE CURRENT FBC.
3. GLASS LITES THAT EXCEED 36" IN WIDTH SHALL USE SETTING BLOCKS AT ¼ SPAN FROM CORNERS.



EURO-WALL SYSTEMS, LLC  
24100 TISEO BOULEVARD  
PORT CHARLOTTE, FL 33980  
PH: 888-989-3876

TITLE: EURO VISTA SLIDE DOOR (IMPACT) (HVHZ)  
GENERAL NOTES AND GLAZING DETAILS

PREPARED BY: BUILDING DROPS, INC.  
398 E. DANIA BEACH BLVD., STE. 338  
DANIA BEACH, FL 33004  
PH: (954)399-8478  
FAX: (954)744-4738  
WEB: www.buildingdrops.com



REMARKS	BY	DATE

THIS DOCUMENT IS THE PROPERTY OF BUILDING DROPS, INC. AND SHALL NOT BE REPRODUCED IN WHOLE OR PART WITHOUT WRITTEN CONSENT OF BUILDING DROPS, INC. ALTERATIONS, ADDITIONS, HIGHLIGHTING, OR OTHER MARKINGS TO THIS DOCUMENT ARE NOT PERMITTED AND INVALIDATE OUR CERTIFICATION.



FL #:  
**FL27423**

DATE: **06.13.18**

DWG. BY: **RV**      CHK. BY: **HFN**

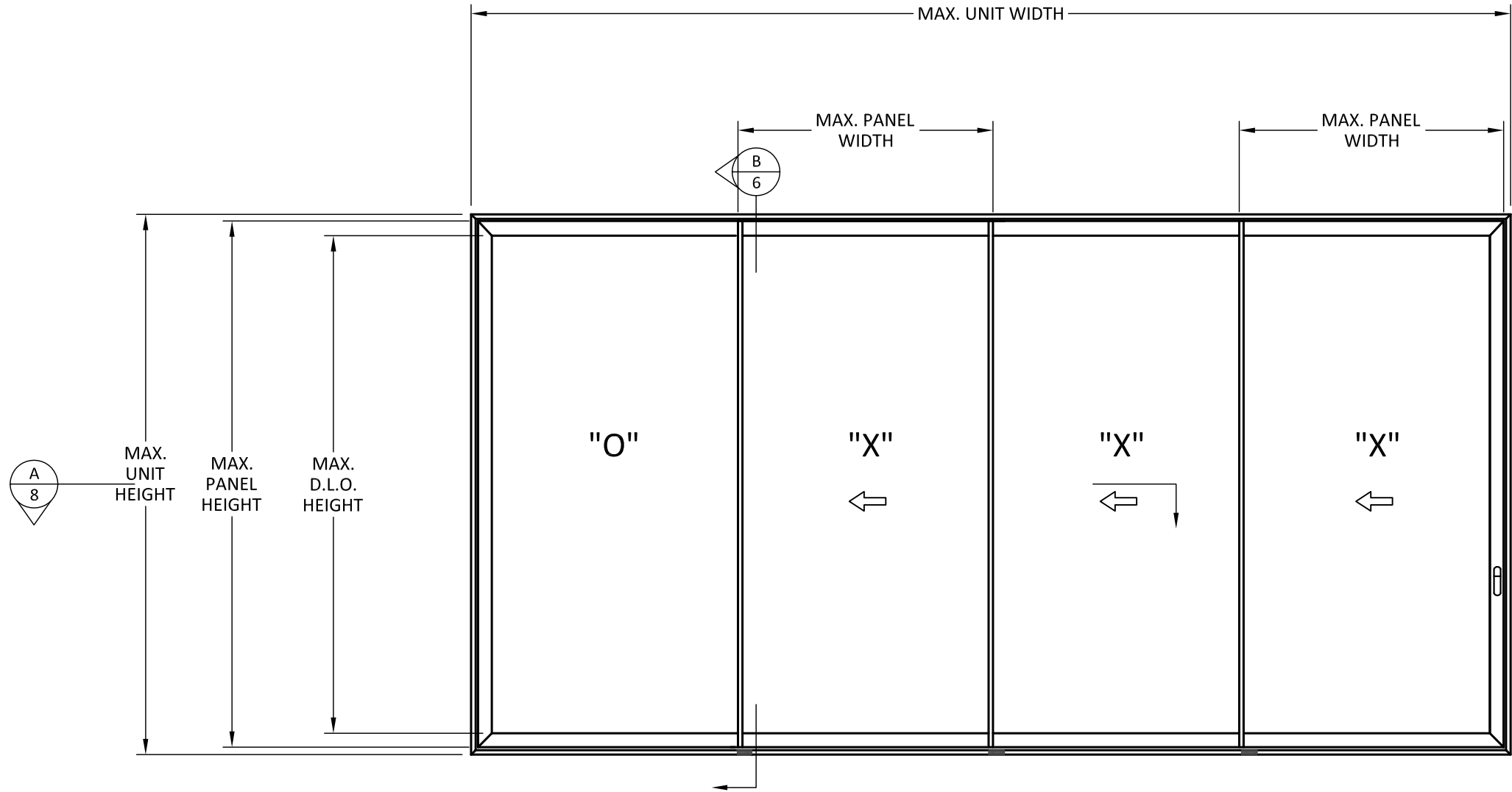
SCALE: **NTS**

DWG. #: **EWS009**

SHEET:

**1**

6/19/2018 11:02 PM



ELEVATION

DESIGN PRESSURE TABLE (psf)																
		PANEL WIDTH (INCHES)														
PANEL HEIGHT (INCHES)		30	32	36	40	44	48	50	56	60	66	72	78	84	90	96
	72	70.0	70.0	70.0	70.0	70.0	70.0	70.0	70.0	70.0	70.0	70.0	70.0	70.0	70.0	70.0
	78	70.0	70.0	70.0	70.0	70.0	70.0	70.0	70.0	70.0	70.0	70.0	70.0	70.0	70.0	48.1
	84	70.0	70.0	70.0	70.0	70.0	70.0	70.0	70.0	70.0	70.0	70.0	70.0	70.0	51.3	48.1
	90	70.0	70.0	70.0	70.0	70.0	70.0	70.0	70.0	70.0	70.0	70.0	70.0	55.0	51.3	48.1
	96	70.0	70.0	70.0	70.0	70.0	70.0	70.0	70.0	70.0	70.0	70.0	55.0	55.0	51.3	48.1
	102	70.0	70.0	70.0	70.0	70.0	70.0	70.0	70.0	70.0	70.0	55.0	55.0	55.0	51.3	48.1
	108	70.0	70.0	70.0	70.0	70.0	70.0	70.0	70.0	70.0	70.0	55.0	55.0	55.0	51.3	
	114	70.0	70.0	70.0	70.0	70.0	70.0	70.0	70.0	70.0	55.0	55.0	55.0	55.0		
	120	70.0	70.0	70.0	70.0	70.0	70.0	70.0	70.0	70.0	55.0	55.0	55.0	55.0		

- DESIGN PRESSURE NOTES:
- DESIGN PRESSURE SHALL BE LIMITED TO VALUES LISTED IN ABOVE TABLE BASED ON PANEL SIZE.
  - ALL POCKET PANELS HAVE A MAXIMUM DESIGN PRESSURES OF +/- 55 PSF UP TO 50 SQUARE FOOT PANELS AND +/- 40 PSF UP TO 70 SQUARE FOOT PANELS



EURO-WALL SYSTEMS, LLC  
24100 TISEO BOULEVARD  
PORT CHARLOTTE, FL 33980  
PH: 888-989-3876

TITLE:  
EURO VISTA SLIDE DOOR  
(IMPACT) (HVHZ)  
ELEVATION

PREPARED BY:  
BUILDING DROPS, INC.  
398 E. DANIA BEACH BLVD., STE. 338  
DANIA BEACH, FL 33004  
PH: (954)399-8478  
FAX: (954)744-4738  
WEB: www.buildingdrops.com

REMARKS	BY	DATE

THIS DOCUMENT IS THE PROPERTY OF BUILDING DROPS, INC. AND SHALL NOT BE REPRODUCED IN WHOLE OR PART WITHOUT WRITTEN CONSENT OF BUILDING DROPS, INC. ALTERATIONS, ADDITIONS, HIGHLIGHTING, OR OTHER MARKINGS TO THIS DOCUMENT ARE NOT PERMITTED AND INVALIDATE OUR CERTIFICATION.

HERMES F. NORERO, P.E.  
FLORIDA P.E. No. 73778  
BUILDING DROPS, INC  
398 E. DANIA BEACH BLVD. # 338  
DANIA BEACH, FL 33004  
FBPE CERT. OF AUTHORIZATION No. 29578

FL #:  
**FL27423**

DATE: **06.13.18**

DWG. BY: **RV**      CHK. BY: **HFN**

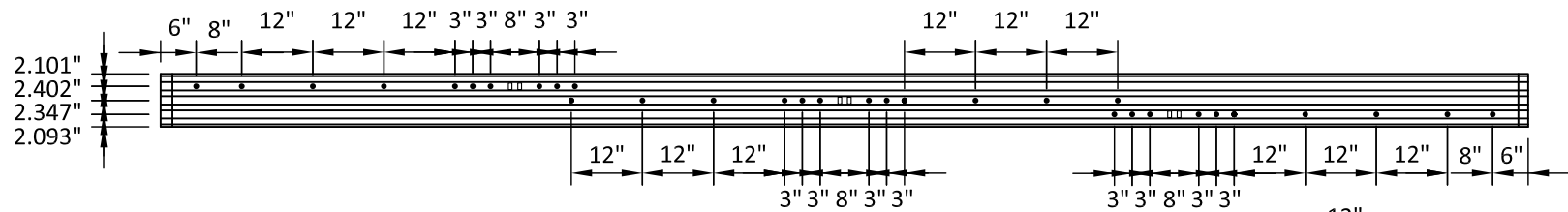
SCALE: **NTS**

DWG. #: **EWS009**

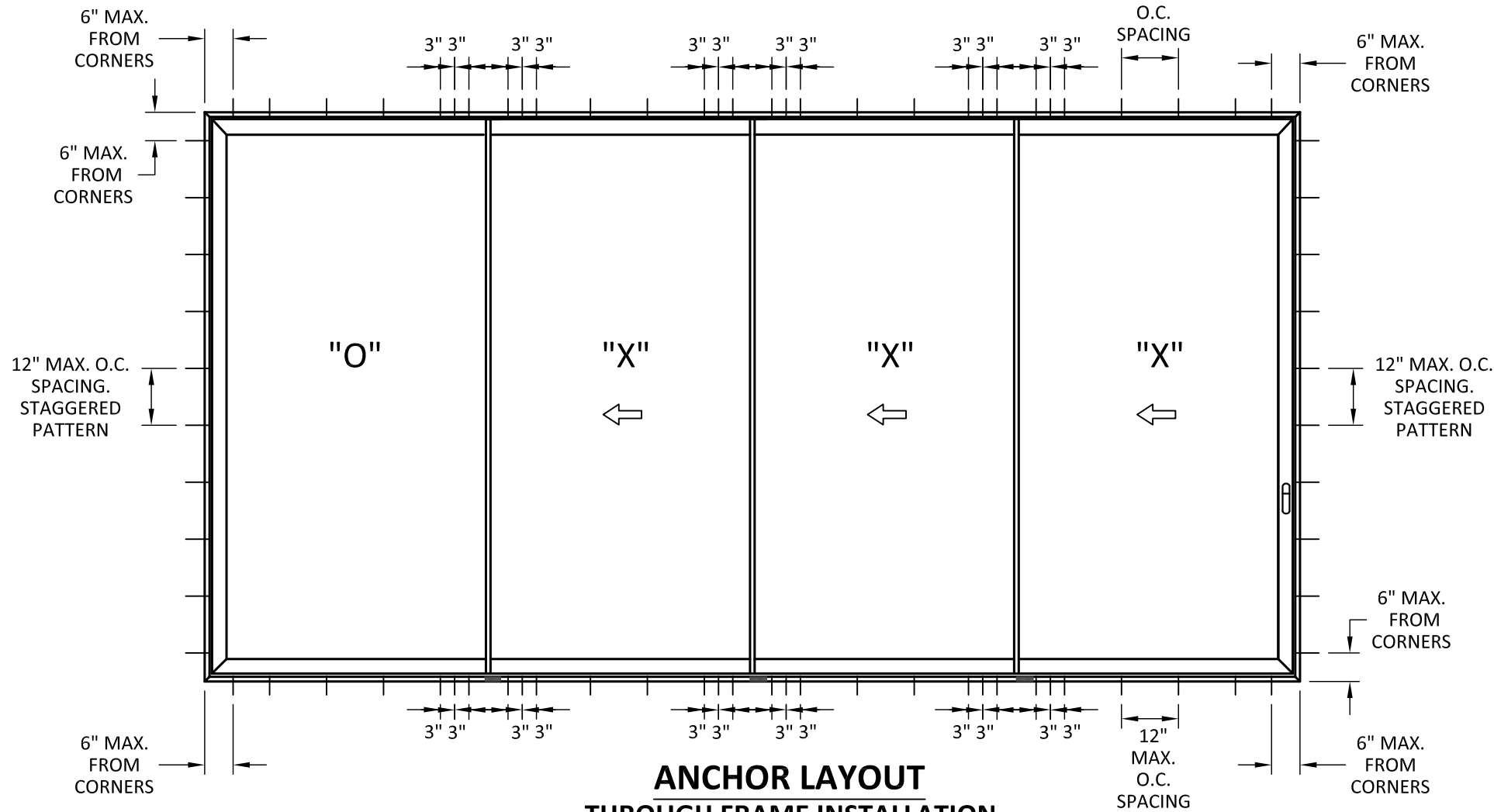
SHEET:  
**2**  
OF 9

6/19/2018 11:02 PM

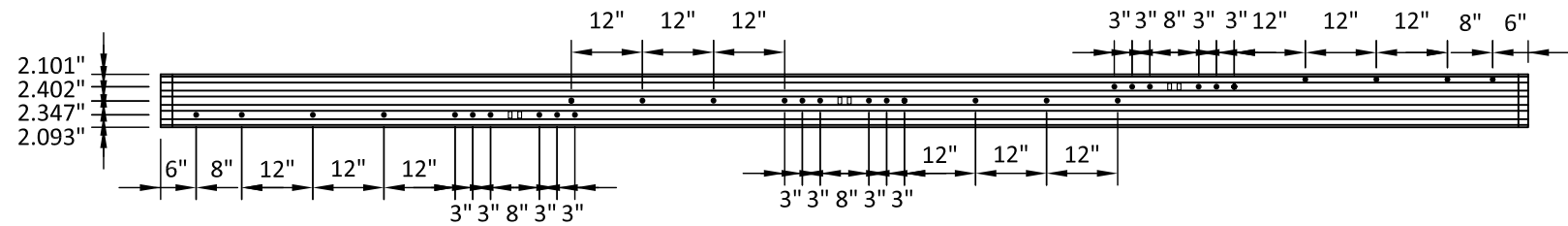
s:\projects\euro-wall systems\fbc-18-0417 - fbc submittal - lift and slide door - impact\dwgs\ews009.dwg



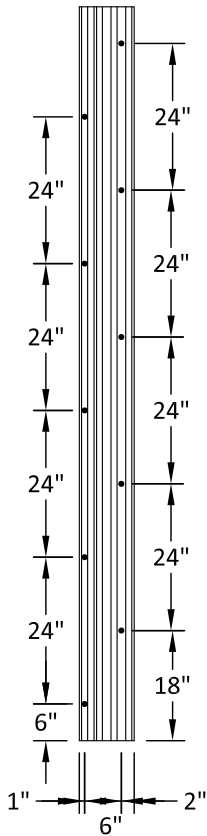
HEADER LAYOUT



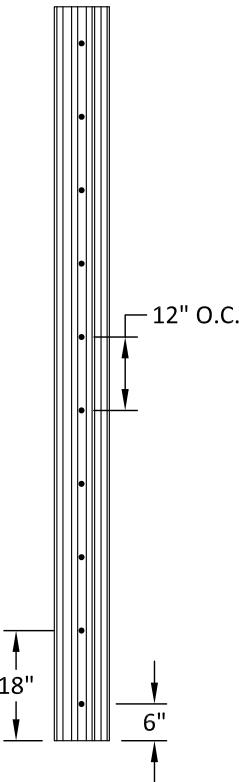
ANCHOR LAYOUT  
THROUGH FRAME INSTALLATION



SILL LAYOUT



JAMB LAYOUT



HOOK-STRIP

euro-wall  
SUPERIOR BY DESIGN

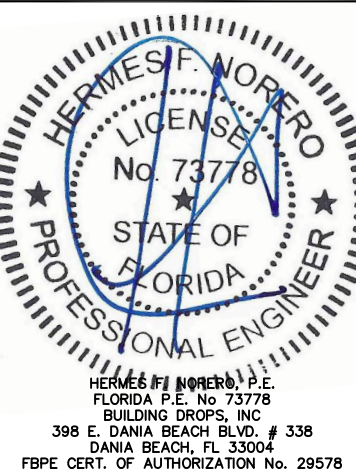
EURO-WALL SYSTEMS, LLC  
24100 TISEO BOULEVARD  
PORT CHARLOTTE, FL 33980  
PH: 888-989-3876

TITLE: EURO VISTA SLIDE DOOR  
(IMPACT) (HVHZ)  
ANCHOR LAYOUT

PREPARED BY: BUILDING DROPS, INC.  
398 E. DANIA BEACH BLVD., STE. 338  
DANIA BEACH, FL 33004  
PH: (954)399-8478  
FAX: (954)744-4738  
WEB: www.buildingdrops.com

REMARKS	BY	DATE

THIS DOCUMENT IS THE PROPERTY OF BUILDING DROPS, INC. AND SHALL NOT BE REPRODUCED IN WHOLE OR PART WITHOUT WRITTEN CONSENT OF BUILDING DROPS, INC. ALTERATIONS, ADDITIONS, HIGHLIGHTING, OR OTHER MARKINGS TO THIS DOCUMENT ARE NOT PERMITTED AND INVALIDATE OUR CERTIFICATION.



FL #: FL27423

DATE: 06.13.18

DWG. BY: RV  
CHK. BY: HFN

SCALE: NTS

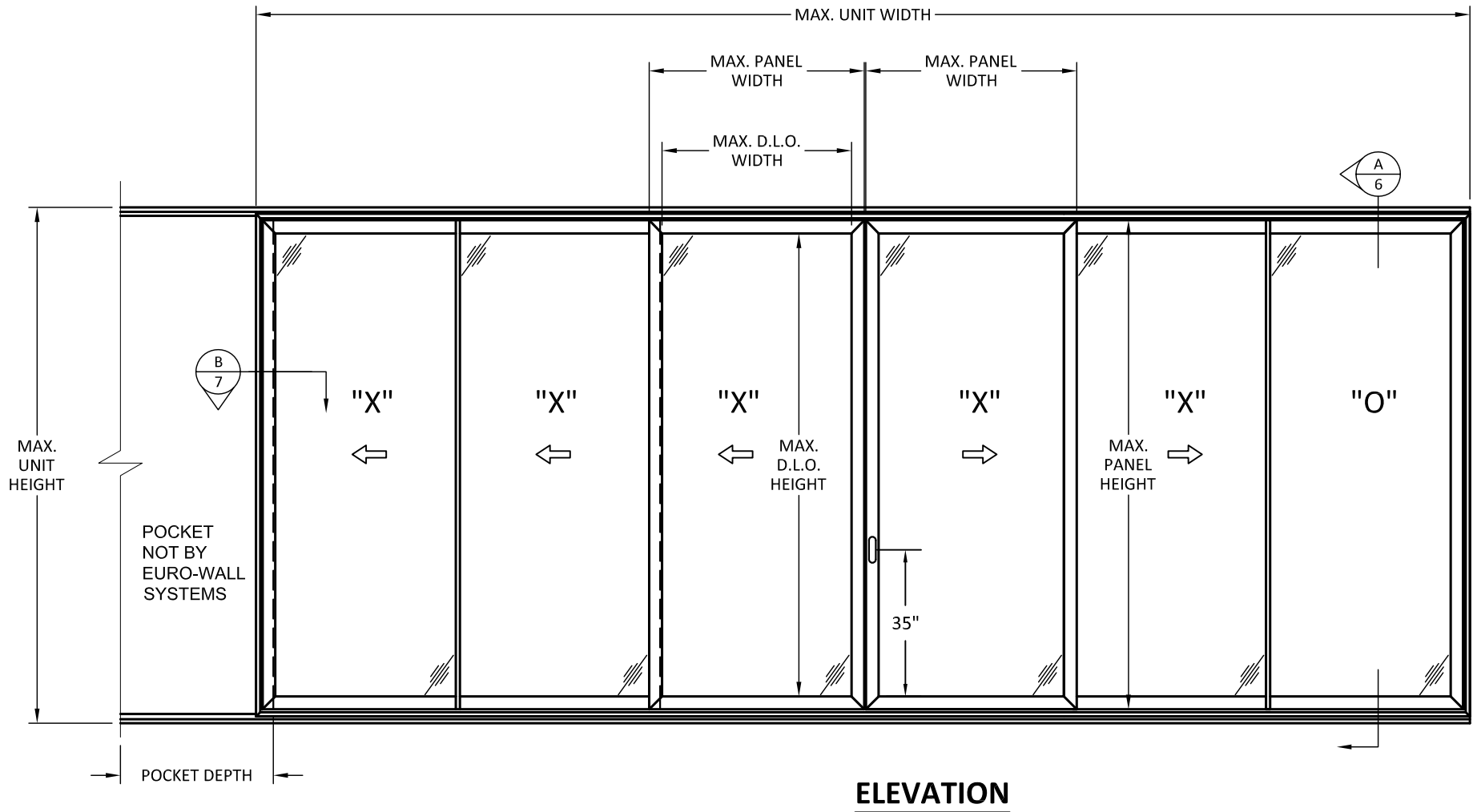
DWG. #: EWS009

SHEET:

3

6/19/2018 11:02 PM

s:\projects\euro-wall systems\fbc-18-0417 - fbc submittal - lift and slide door - impact\dwgs\ews009.dwg



ELEVATION



EURO-WALL SYSTEMS, LLC  
24100 TISEO BOULEVARD  
PORT CHARLOTTE, FL 33980  
PH: 888-989-3876

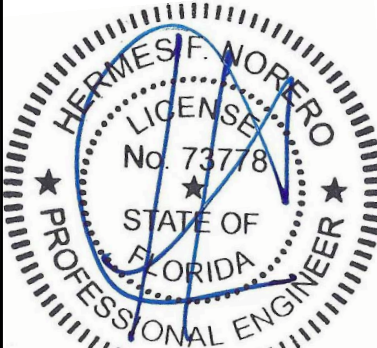
TITLE: EURO VISTA SLIDE DOOR  
(IMPACT) (HVHZ)  
ELEVATION

PREPARED BY:  
BUILDING DROPS, INC.  
398 E. DANIA BEACH BLVD., STE. 338  
DANIA BEACH, FL 33004  
PH: (954)399-8478  
FAX: (954)744-4738  
WEB: www.buildingdrops.com



REMARKS	BY	DATE

THIS DOCUMENT IS THE PROPERTY OF BUILDING DROPS, INC. AND SHALL NOT BE REPRODUCED IN WHOLE OR PART WITHOUT WRITTEN CONSENT OF BUILDING DROPS, INC. ALTERATIONS, ADDITIONS, HIGHLIGHTING, OR OTHER MARKINGS TO THIS DOCUMENT ARE NOT PERMITTED AND INVALIDATE OUR CERTIFICATION.



HERMES F. NORERO, P.E.  
FLORIDA P.E. No. 73778  
BUILDING DROPS, INC  
398 E. DANIA BEACH BLVD. # 338  
DANIA BEACH, FL 33004  
FBPE CERT. OF AUTHORIZATION No. 29578

FL #:  
FL27423

DATE: 06.13.18

DWG. BY: RV  
CHK. BY: HFN

SCALE: NTS

DWG. #: EWS009

SHEET:  
4

## ANCHOR LAYOUT

TITLE:

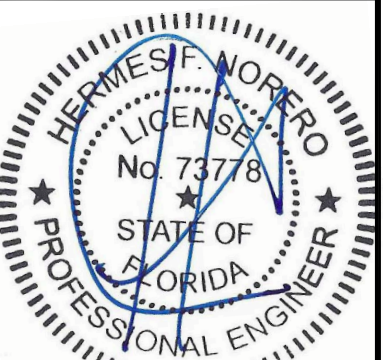
**BUILDING DROPS, INC.**  
398 E. DANIA BEACH BLVD., STE. 338

DANIA BEACH, FL 33004  
PH: (954)399-8478  
FAX: (954)744.4738  
WEB: [www.buildingdrops.com](http://www.buildingdrops.com)



REMARKS	BY	DATE

THIS DOCUMENT IS THE PROPERTY OF BUILDING DROPS, INC.  
AND SHALL NOT BE REPRODUCED IN WHOLE OR PART  
WITHOUT WRITTEN CONSENT OF BUILDING DROPS, INC.  
ALTERATIONS, ADDITIONS, HIGHLIGHTING, OR OTHER  
MARKINGS TO THIS DOCUMENT ARE NOT PERMITTED AND  
INVALIDATE OUR CERTIFICATION.



HERMES FI NORERO, P.E.  
FLORIDA P.E. No 73778  
BUILDING DROPS, INC  
398 E. DANIA BEACH BLVD. # 338  
DANIA BEACH, FL 33004  
FBPE CERT. OF AUTHORIZATION No. 29578

FL #:

FL27423

DATE: 06.13.18

DWG. BY:  
**RV**

CHK. BY:  
HFN

SCALE: NTS

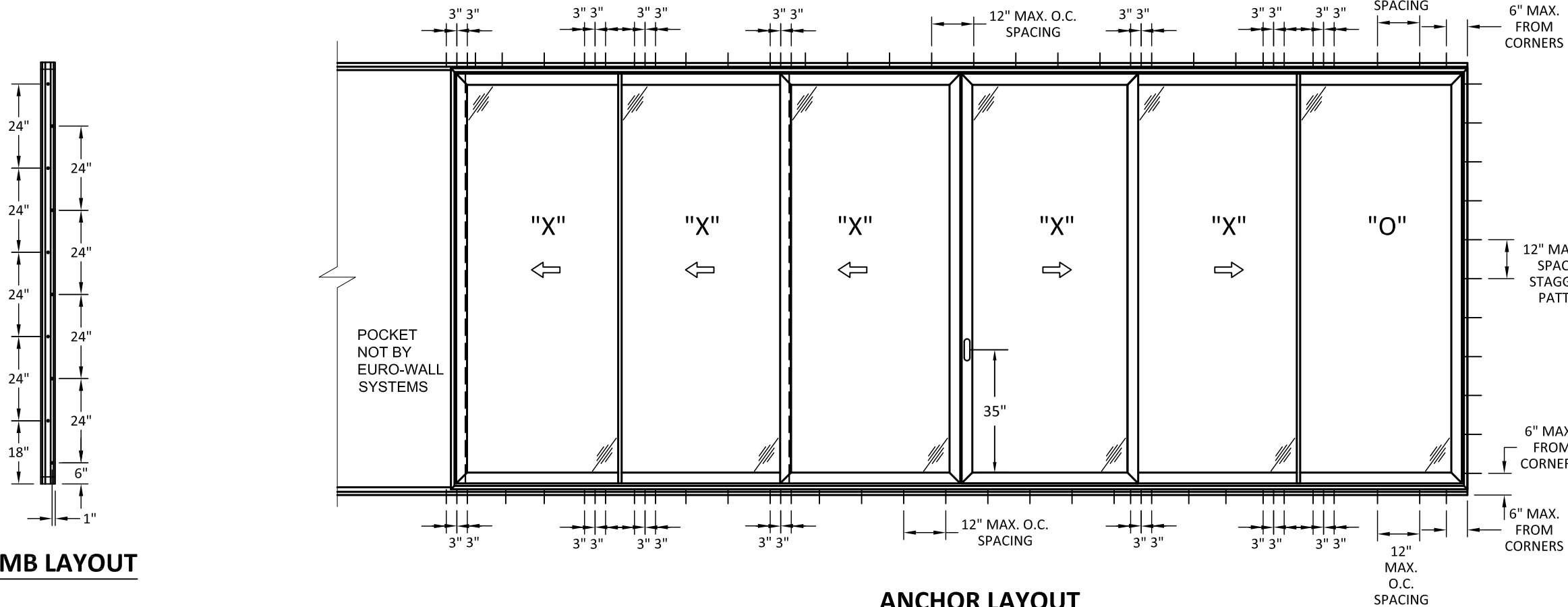
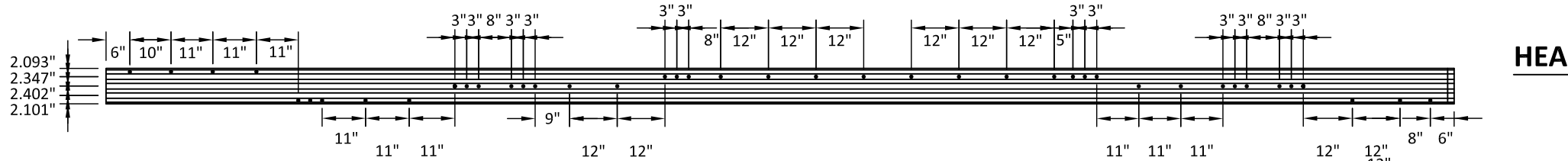
DWG. #: EWS009

SHEET:

5

OF 9

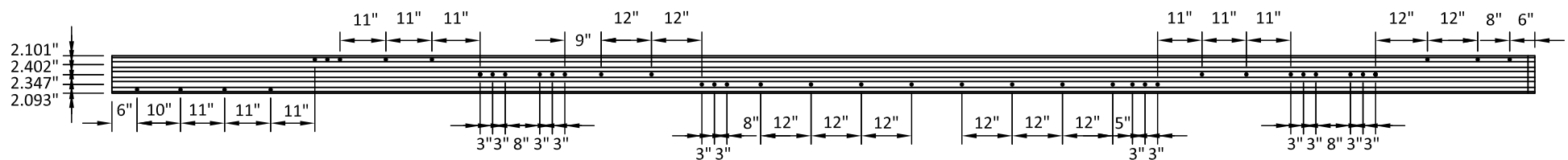
## HEADER LAYOUT



## JAMB LAYOUT

## **ANCHOR LAYOUT** **THROUGH FRAME INSTALLATION**

## SILL LAYOUT

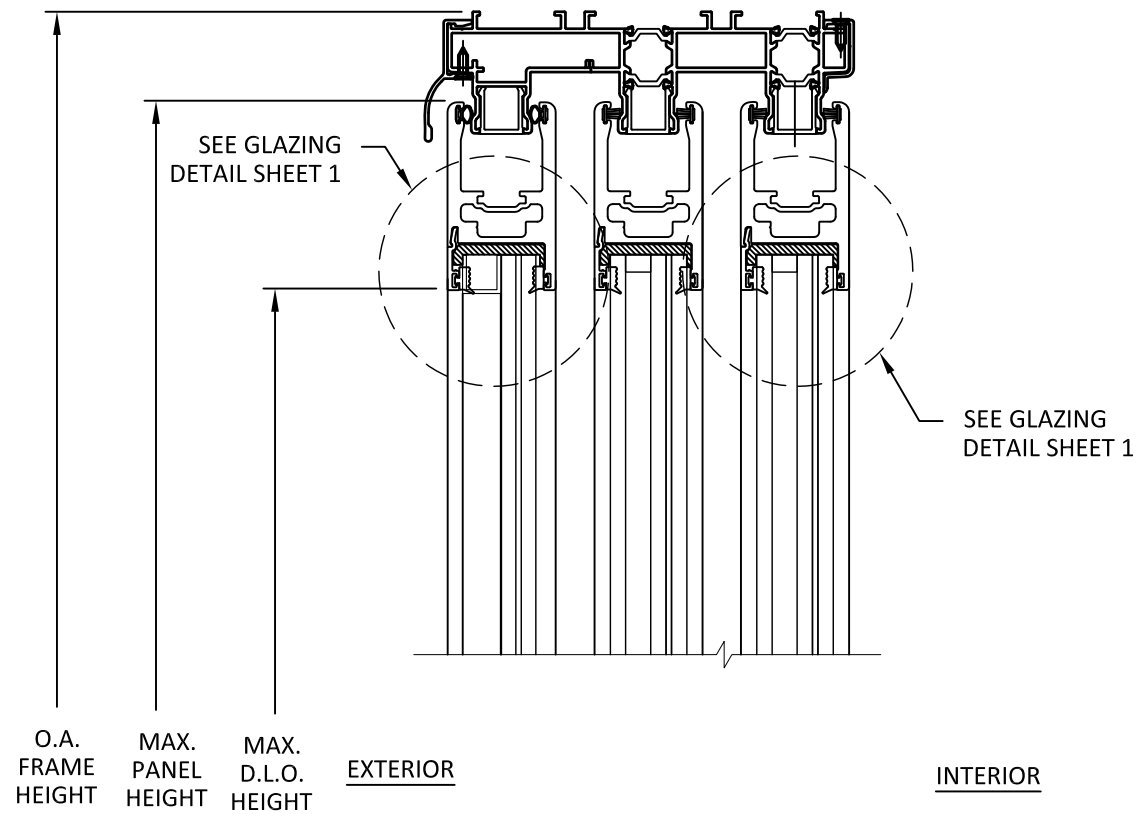


## JAMB LAYOUT



6/19/2018 11:02 PM

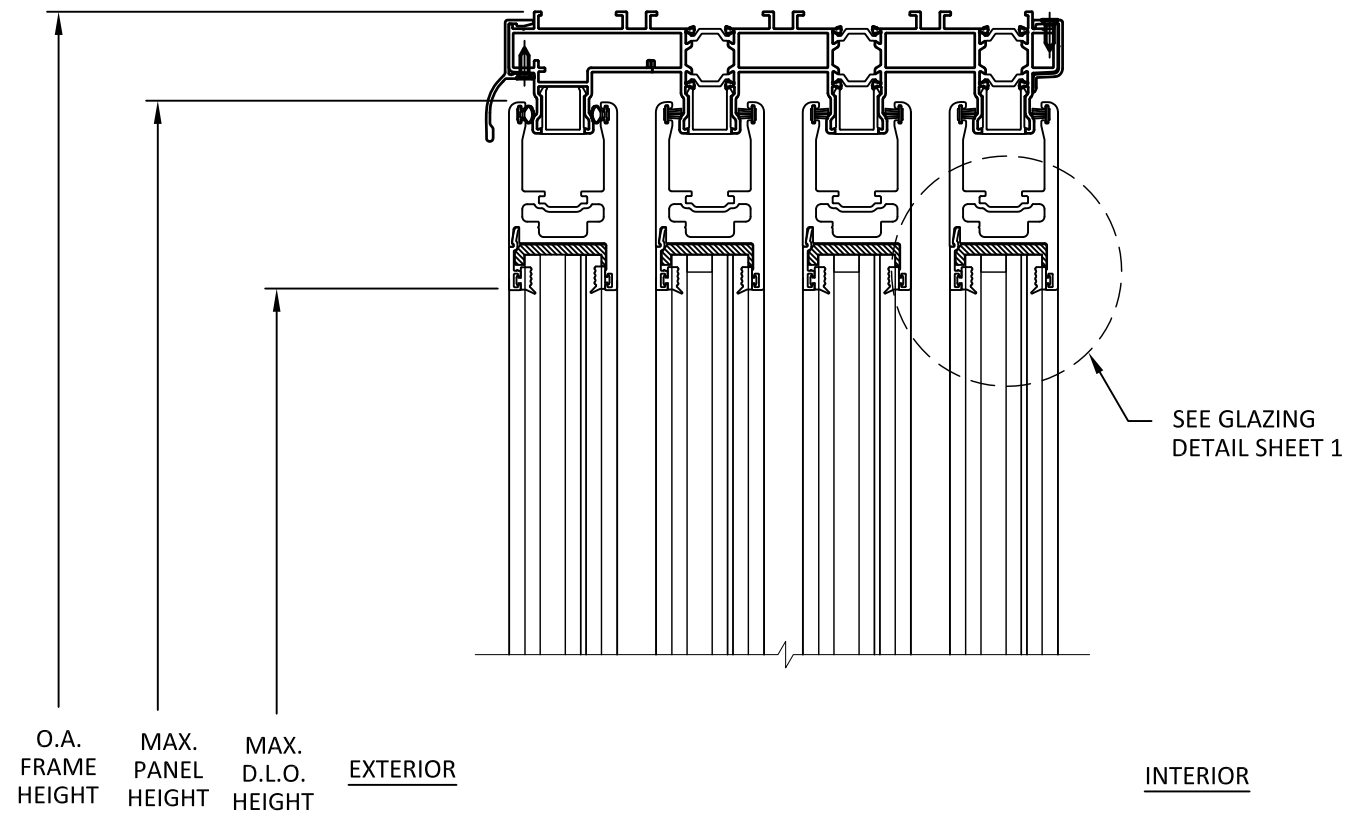
s:\projects\euro-wall systems\fbc-18-0417 - fbc submittal - lift and slide door - impact\dwgs\ews009.dwg



A  
6

## VERTICAL SECTION

STANDARD SILL - WATER RATED



B  
6

## VERTICAL SECTION

STANDARD SILL - WATER RATED

euro-wall  
SUPERIOR BY DESIGN

EURO-WALL SYSTEMS, LLC  
24100 TISEO BOULEVARD  
PORT CHARLOTTE, FL 33980  
PH: 888-989-3876

TITLE: EURO VISTA SLIDE DOOR  
(IMPACT) (HVHZ)

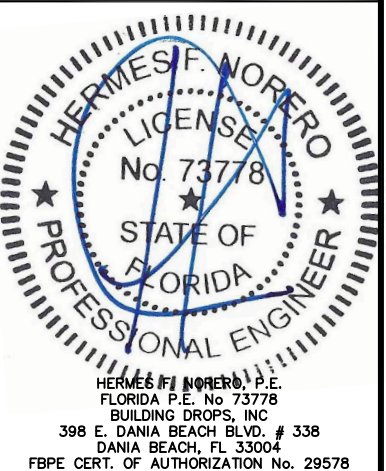
VERTICAL SECTIONS

PREPARED BY: BUILDING DROPS, INC.  
398 E. DANIA BEACH BLVD., STE. 338  
DANIA BEACH, FL 33004  
PH: (954)399-8478  
FAX: (954)744-4738  
WEB: www.buildingdrops.com



REMARKS	BY	DATE

THIS DOCUMENT IS THE PROPERTY OF BUILDING DROPS, INC. AND SHALL NOT BE REPRODUCED IN WHOLE OR PART WITHOUT WRITTEN CONSENT OF BUILDING DROPS, INC. ALTERATIONS, ADDITIONS, HIGHLIGHTING, OR OTHER MARKINGS TO THIS DOCUMENT ARE NOT PERMITTED AND INVALIDATE OUR CERTIFICATION.



FL #: FL27423

DATE: 06.13.18

DWG. BY: RV  
CHK. BY: HFN

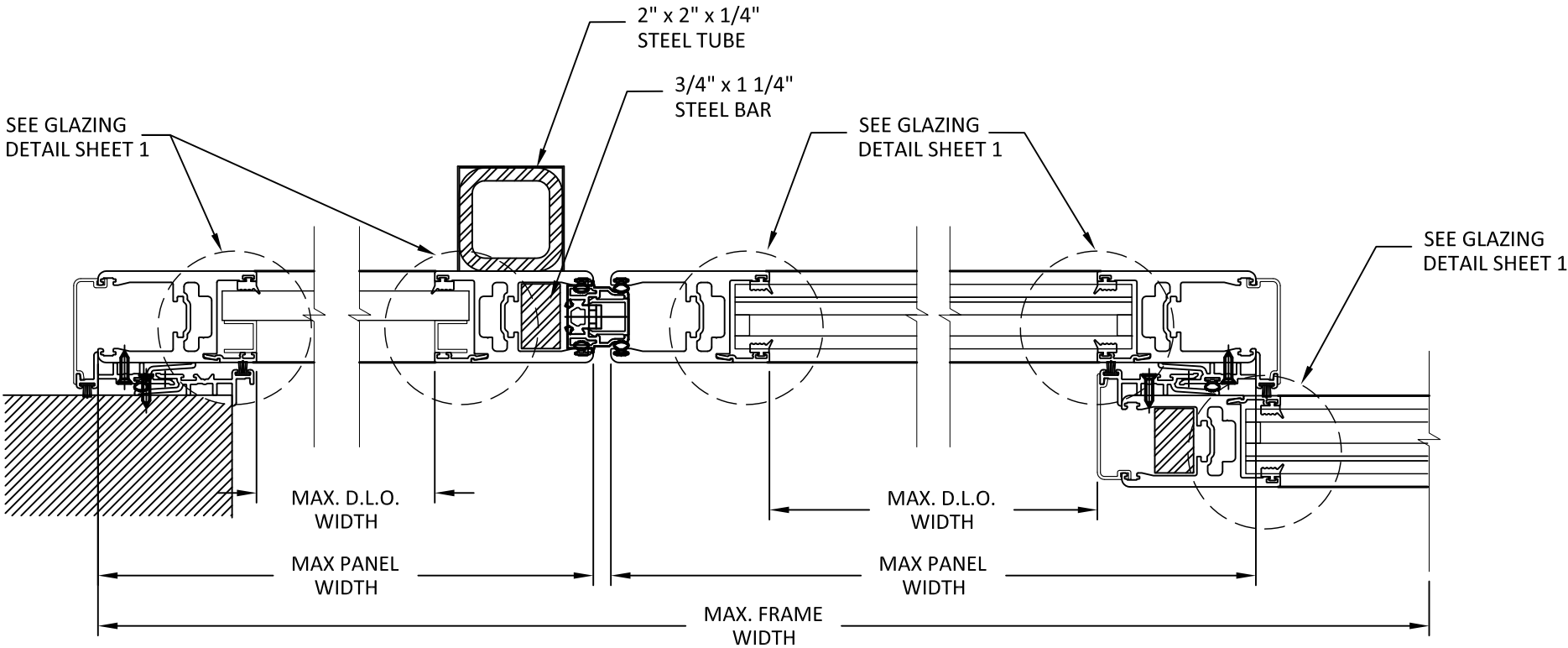
SCALE: NTS

DWG. #: EWS009

SHEET: 6

6/19/2018 11:02 PM

s:\projects\euro-wall systems\fbc-18-0417 - fbc submittal - lift and slide door - impact\dwgs\ews009.dwg



**B**  
**7** **HORIZONTAL SECTION**  
THROUGH FRAME INSTALLATION  
FRAME AT CLOSED POSITION

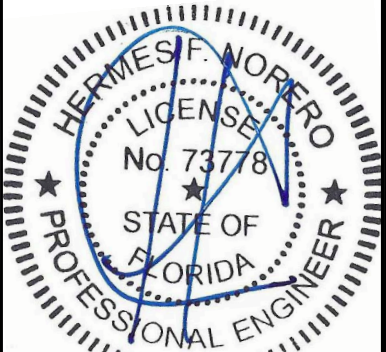
TITLE: EURO VISTA SLIDE DOOR  
(IMPACT) (HVHZ)  
HORIZONTAL SECTIONS

PREPARED BY:  
**BUILDING DROPS, INC.**  
398 E. DANIA BEACH BLVD., STE. 338  
DANIA BEACH, FL 33004  
PH: (954)399-8478  
FAX: (954)744-4738  
WEB: www.buildingdrops.com



REMARKS	BY	DATE

THIS DOCUMENT IS THE PROPERTY OF BUILDING DROPS, INC. AND SHALL NOT BE REPRODUCED IN WHOLE OR PART WITHOUT WRITTEN CONSENT OF BUILDING DROPS, INC. ALTERATIONS, ADDITIONS, HIGHLIGHTING, OR OTHER MARKINGS TO THIS DOCUMENT ARE NOT PERMITTED AND INVALIDATE OUR CERTIFICATION.



HERMES F. NORERO, P.E.  
FLORIDA P.E. No. 73778  
BUILDING DROPS, INC  
398 E. DANIA BEACH BLVD. # 338  
DANIA BEACH, FL 33004  
FBPE CERT. OF AUTHORIZATION No. 29578

FL #:  
**FL27423**

DATE: **06.13.18**

DWG. BY: **RV**      CHK. BY: **HFN**

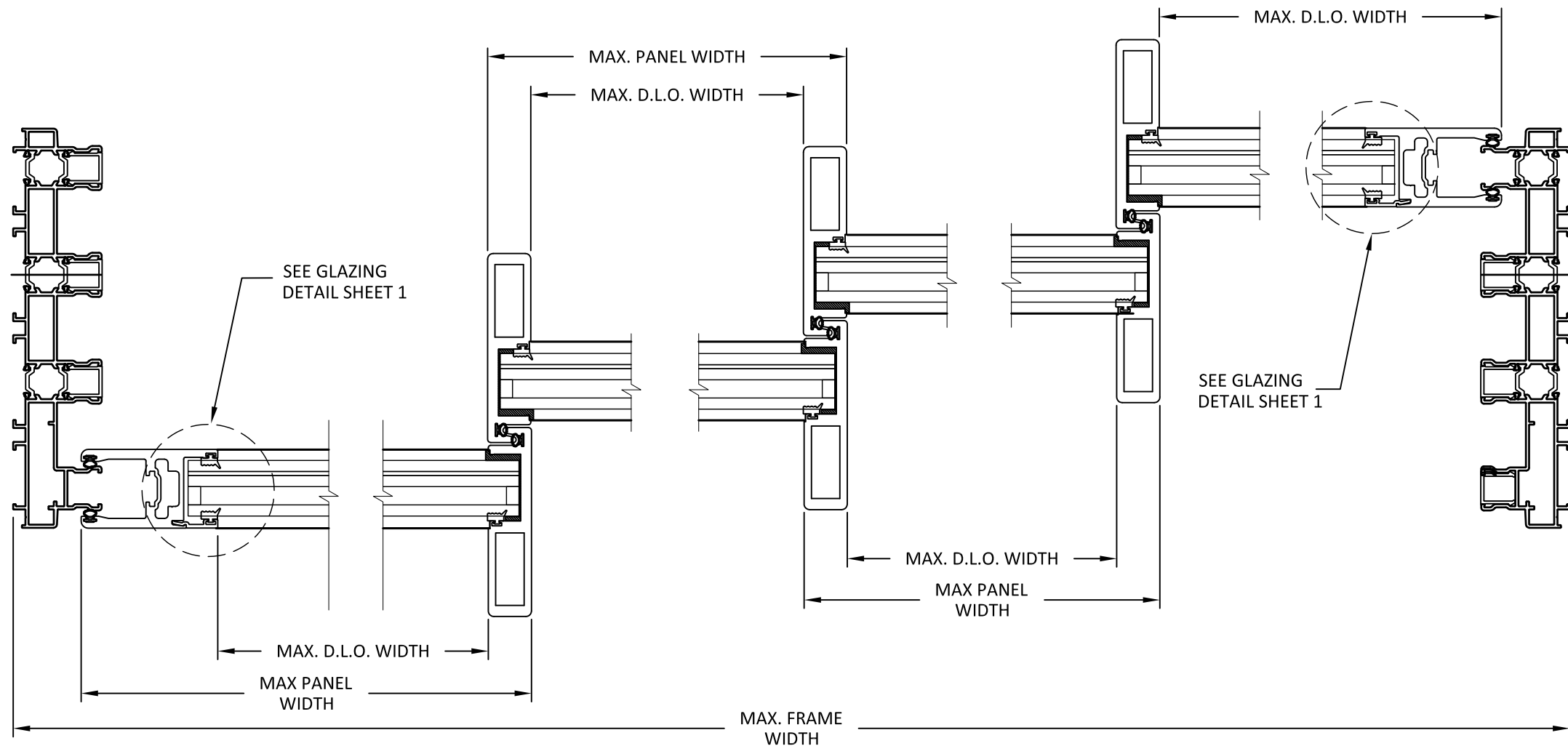
SCALE: **NTS**

DWG. #: **EWS009**

SHEET:  
**7**

6/19/2018 11:02 PM

s:\projects\euro-wall systems\fbc-18-0417 - fbc submittal - lift and slide door - impact\dwgs\ews009.dwg



**A**  
**8** **HORIZONTAL SECTION**  
THROUGH FRAME INSTALLATION

TITLE: EURO VISTA SLIDE DOOR  
(IMPACT) (HVHZ)

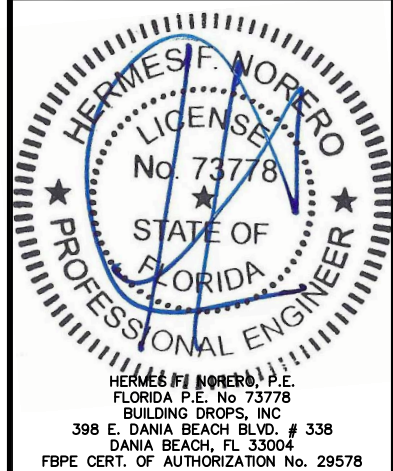
HORIZONTAL SECTIONS

PREPARED BY: **BUILDING DROPS, INC.**  
398 E. DANIA BEACH BLVD., STE. 338  
DANIA BEACH, FL 33004  
PH: (954)399-8478  
FAX: (954)744-4738  
WEB: www.buildingdrops.com



REMARKS	BY	DATE

THIS DOCUMENT IS THE PROPERTY OF BUILDING DROPS, INC. AND SHALL NOT BE REPRODUCED IN WHOLE OR PART WITHOUT WRITTEN CONSENT OF BUILDING DROPS, INC. ALTERATIONS, ADDITIONS, HIGHLIGHTING, OR OTHER MARKINGS TO THIS DOCUMENT ARE NOT PERMITTED AND INVALIDATE OUR CERTIFICATION.



FL #:

**FL27423**

DATE: **06.13.18**

DWG. BY: <b>RV</b>	CHK. BY: <b>HFN</b>
-----------------------	------------------------

SCALE: **NTS**

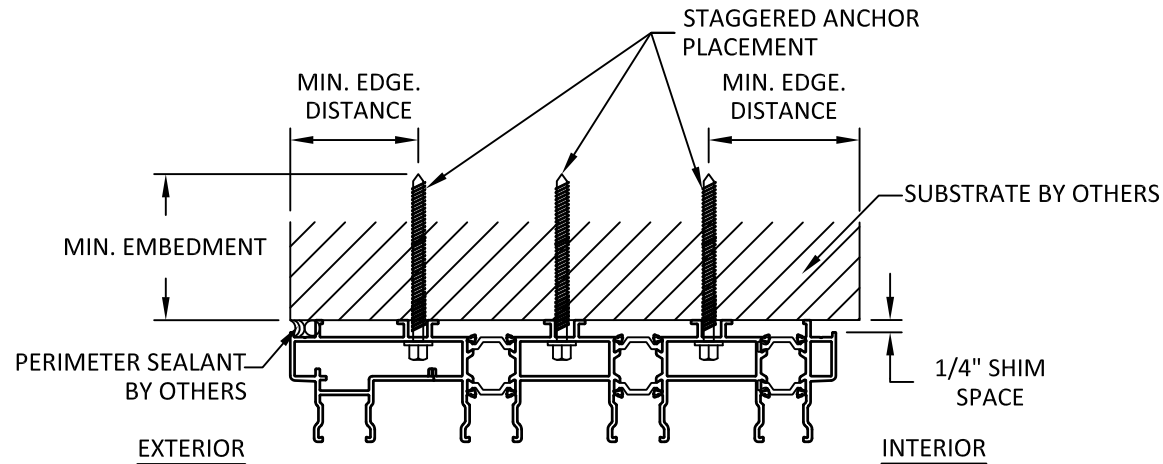
DWG. #: **EWS009**

SHEET:

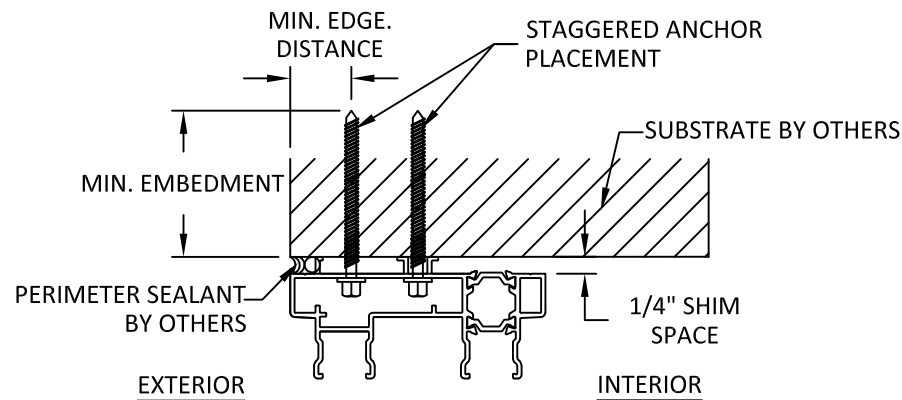
**8**



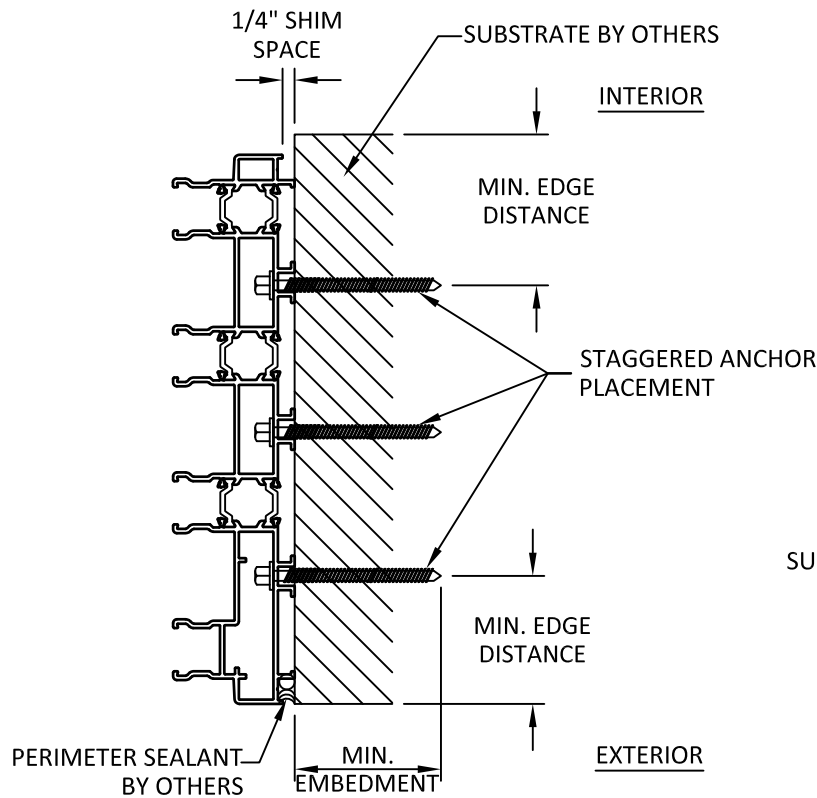
6/19/2018 11:02 PM



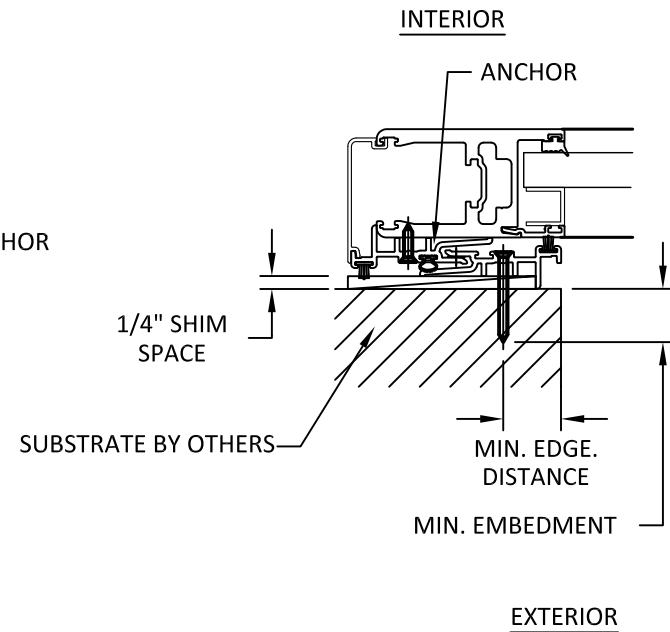
**A**  
**9**  
**ANCHOR DETAIL**  
THROUGH FRAME (HEAD & SILL)



**B**  
**9**  
**ANCHOR DETAIL**  
THROUGH FRAME (HEAD & SILL)



**C**  
**9**  
**ANCHOR DETAIL**  
THROUGH FRAME (JAMB)



**D**  
**9**  
**ANCHOR DETAIL**  
HOOK STRIP

**INSTALLATION NOTES:**

- ONE (1) INSTALLATION ANCHOR IS REQUIRED AT EACH ANCHOR LOCATION SHOWN UNLESS SPECIFIED IN THE ANCHOR SCHEDULE. TWO (2) INSTALLATION ANCHORS AT THE JAMBS.
- THE NUMBER OF INSTALLATION ANCHORS DEPICTED IS THE MINIMUM NUMBER OF ANCHORS TO BE USED FOR PRODUCT INSTALLATION OF THE MAXIMUM SIZE LISTED.
- INSTALL INDIVIDUAL INSTALLATION ANCHORS WITHIN A TOLERANCE OF  $\pm 1/2$  INCH THE DEPICTED LOCATION & SPACING IN THE ANCHOR LAYOUT DETAILS (I.E., WITHOUT CONSIDERATION OF TOLERANCES). TOLERANCES ARE NOT CUMULATIVE FROM ONE INSTALLATION ANCHOR TO THE NEXT.
- SHIM AS REQUIRED AT EACH INSTALLATION ANCHOR WITH LOAD BEARING SHIM(S). MAXIMUM ALLOWABLE SHIM STACK TO BE 1/4 INCH. SHIM WHERE SPACE OF 1/16 INCH OR GREATER OCCURS. SHIM(S) SHALL BE CONSTRUCTED OF HIGH DENSITY PLASTIC OR BETTER.
- FOR MASONRY OR CONCRETE OPENINGS, 1X WOOD BUCK MAY BE USED (OPTIONAL AS LONG AS THE MINIMUM EMBEDMENT AND EDGE DISTANCE REQUIREMENTS ARE STILL MET WITHIN THE CORRESPONDING HOST SUBSTRATE.) SEE GENERAL NOTE #3 ON SHEET 1 FOR MORE INFORMATION.
- MINIMUM EMBEDMENT AND EDGE DISTANCE EXCLUDE WALL FINISHES, INCLUDING BUT NOT LIMITED TO STUCCO, FOAM, BRICK VENEER, AND SIDING.
- INSTALLATION ANCHORS AND ASSOCIATED HARDWARE MUST BE MADE OF CORROSION RESISTANT MATERIAL OR HAVE A CORROSION RESISTANT COATING.
- FOR HOLLOW BLOCK AND GROUT FILLED BLOCK, DO NOT INSTALL INSTALLATION ANCHORS INTO MORTAR JOINTS. EDGE DISTANCE IS MEASURED FROM FREE EDGE OF BLOCK OR EDGE OF MORTAR JOINT INTO FACE SHELL OF BLOCK.
- INSTALLATION ANCHORS SHALL BE INSTALLED IN ACCORDANCE WITH ANCHOR MANUFACTURER'S INSTALLATION INSTRUCTIONS, AND ANCHORS SHALL NOT BE USED IN SUBSTRATES WITH STRENGTHS LESS THAN THE MINIMUM STRENGTH SPECIFIED BY THE ANCHOR MANUFACTURER.
- SILL SHALL BE SET IN A BED OF STRUCTURAL SILICONE.

ANCHOR SCHEDULE				
METHOD	SUBSTRATE	ANCHOR SCHEDULE	MIN EMBEDMENT	MIN. EDGE DISTANCE
THROUGH FRAME	WOOD: MIN. SG = 0.55	#12 WOOD SCREW	1.5"	0.75"
	METAL: 18 GAUGE Steel, MIN. Fy = 33KSI	1/4" TEK SCREW	3 THREADS MIN PENETRATION BEYOND METAL	0.50"
	CONCRETE: f'c=3000PSI	1/4" ITW TAPCON	1.75"	2.5"
	MASONRY: CMU per ASTM C90 MIN: 2000 PSI	1/4" ITW TAPCON	1.75"	3"

**euro-wall**  
SUPERIOR BY DESIGN

EURO-WALL SYSTEMS, LLC  
24100 TISEO BOULEVARD  
PORT CHARLOTTE, FL 33980  
PH: 888-989-3876

TITLE:

EURO VISTA SLIDE DOOR  
(IMPACT) (HVHZ)

INSTALLATION NOTES, ANCHOR  
DETAILS & SCHEDULE

PREPARED BY:

**BUILDING DROPS, INC.**  
398 E. DANIA BEACH BLVD., STE. 338  
DANIA BEACH, FL 33004  
PH: (954)399-8478  
FAX: (954)744-4738  
WEB: www.buildingdrops.com

REMARKS	BY	DATE

THIS DOCUMENT IS THE PROPERTY OF BUILDING DROPS, INC. AND SHALL NOT BE REPRODUCED IN WHOLE OR PART WITHOUT WRITTEN CONSENT OF BUILDING DROPS, INC. ALTERATIONS, ADDITIONS, HIGHLIGHTING, OR OTHER MARKINGS TO THIS DOCUMENT ARE NOT PERMITTED AND INVALIDATE OUR CERTIFICATION.

**HERMES F. NORERO, P.E.**  
FLORIDA P.E. No. 73778  
BUILDING DROPS, INC  
398 E. DANIA BEACH BLVD. # 338  
DANIA BEACH, FL 33004  
FBPE CERT. OF AUTHORIZATION No. 29578

FL #:

**FL27423**

DATE:

**06.13.18**

DWG. BY:

**RV**

CHK. BY:

**HFN**

SCALE:

**NTS**

DWG. #:

**EWS009**

SHEET:

**9**