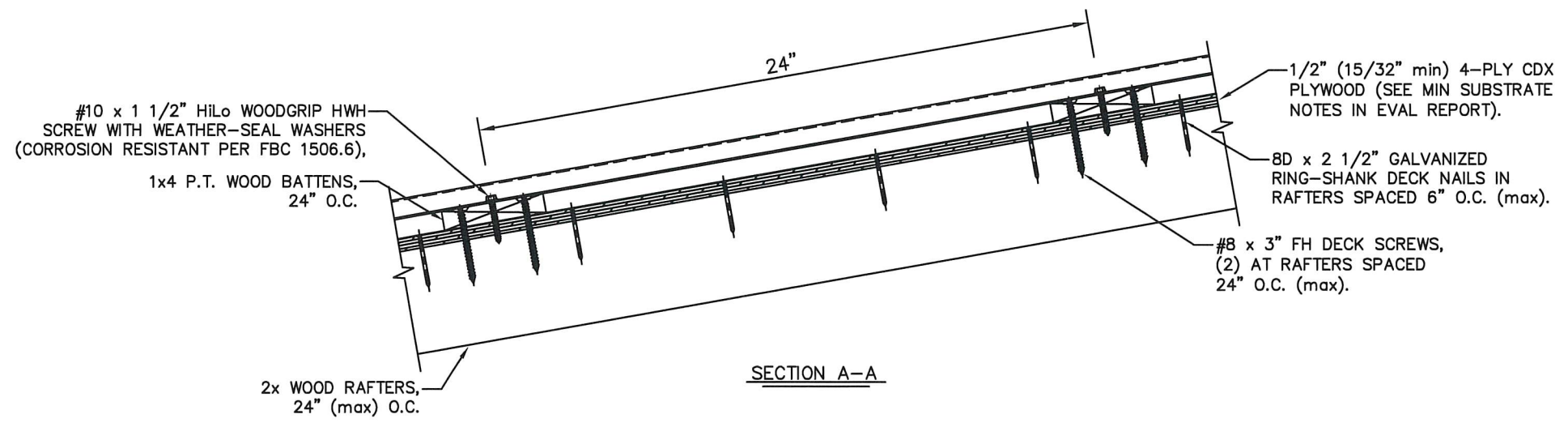
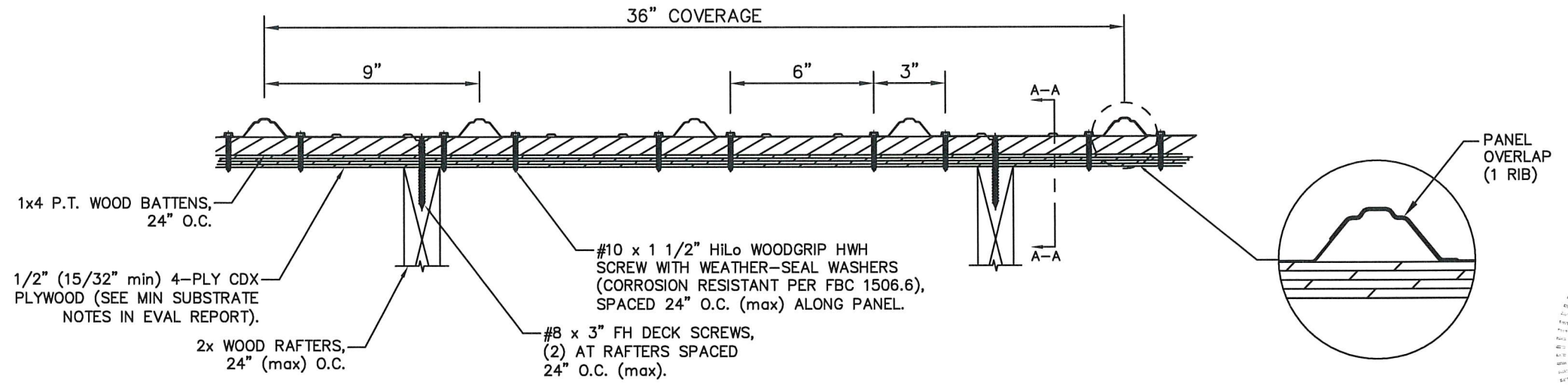
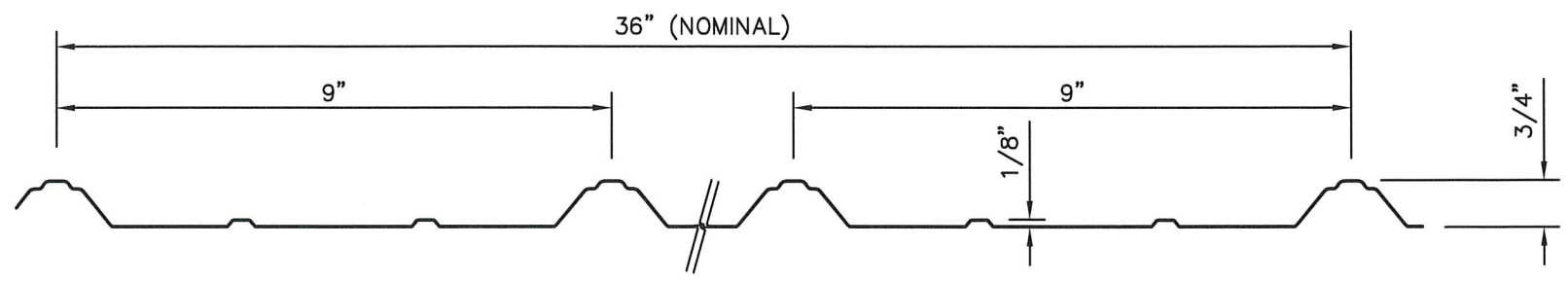


**ARMOUR RIB 29 Ga. STEEL ROOF PANEL**  
**36" WIDE, OVER 1x4 WOOD BATTENS**



MAX DESIGN PRESSURE  
 -183.5 Psf



- GENERAL NOTES:**
1. ROOF SLOPE IS LIMITED PER THE REQUIREMENTS OF FBC SECTION 1507.4.2.
  2. DESIGN OF SUBSTRATE IS BY OTHERS AND NOT A PART OF THIS APPROVAL.
  3. ALL PANEL SYSTEM PERIMETERS, PENETRATIONS, AND TRANSITIONS TO BE FLASHED AND SEALED PER THE REQUIREMENTS OF RAS 133.

DATE	8/5/22
REV#	
PRINTS ISSUED FOR	1ST SUBMITTAL

SCOTT WOLTERS  
 FL PE# 62354

WOLTERS ENGINEERING  
 (COA# 27194)  
 15211 97TH ROAD N  
 WEST PALM BEACH, FL 33412  
 (561) 225-1982

STATE OF FLORIDA  
 AUG 05 2022  
 PROFESSIONAL ENGINEER

**1ST COAST METAL ROOFING SUPPLY**

PH: (561) 629-7288  
 www.1stcoastrms.com

186 STATE ROAD 207  
 EAST PALATKA, FL 32131

**1ST COAST METAL ROOFING SUPPLY**  
 DWG: 1CSRWB6  
 SHEET: 1/1