

AIR MASTER AWNING, LLC

CONTINENTAL SERIES PICTURE WINDOW

(HVHZ) (IMPACT)

GENERAL NOTES:

1. THE PRODUCT SHOWN HEREIN IS DESIGNED AND MANUFACTURED TO COMPLY WITH THE CURRENT FLORIDA BUILDING CODE (FBC), INCLUDING HVHZ AND HAS BEEN EVALUATED ACCORDING TO THE FOLLOWING:
- TAS 201-94
 - TAS 202-94
 - TAS 203-94
2. ADEQUACY OF THE EXISTING STRUCTURAL CONCRETE/MASONRY, STEEL, AND 2X FRAMING AS A MAIN WIND FORCE RESISTING SYSTEM CAPABLE OF WITHSTANDING AND TRANSFERRING APPLIED PRODUCT LOADS TO THE FOUNDATION IS THE RESPONSIBILITY OF THE ENGINEER OR ARCHITECT OF RECORD FOR THE PROJECT OF INSTALLATION.
3. 1X AND 2X BUCKS (WHEN USED) SHALL BE DESIGNED AND ANCHORED TO PROPERLY TRANSFER ALL LOADS TO THE STRUCTURE. BUCK DESIGN AND INSTALLATION IS THE RESPONSIBILITY OF THE ENGINEER OR ARCHITECT OF RECORD FOR THE PROJECT OF INSTALLATION.
4. THE INSTALLATION DETAILS DESCRIBED HEREIN ARE GENERIC AND MAY NOT REFLECT ACTUAL CONDITIONS FOR A SPECIFIC SITE. IF SITE CONDITIONS CAUSE INSTALLATION TO DEVIATE FROM THE REQUIREMENTS DETAILED HEREIN, A LICENSED ENGINEER OR ARCHITECT SHALL PREPARE SITE SPECIFIC DOCUMENTS FOR USE WITH THIS DOCUMENT IN NON-HVHZ AREAS. IN HVHZ AREAS, ONE TIME PRODUCT APPROVAL TO BE OBTAINED FROM MIAMI-DADE RER.
5. APPROVED IMPACT PROTECTIVE SYSTEM **IS NOT REQUIRED** ON THIS PRODUCT IN AREAS REQUIRING IMPACT RESISTANCE.
6. WINDOW FRAME MATERIAL: ALUMINUM 6063-T5
7. DISSIMILAR METALS INCLUDING FASTENERS THAT MAY COME INTO CONTACT WITH ALUMINUM UNIT FRAMING SHALL BE PROTECTED IN ACCORDANCE WITH THE FBC.
8. GLASS MEETS THE REQUIREMENTS OF ASTM E 1300 GLASS CHARTS. SEE SHEET 4 FOR GLAZING DETAILS.

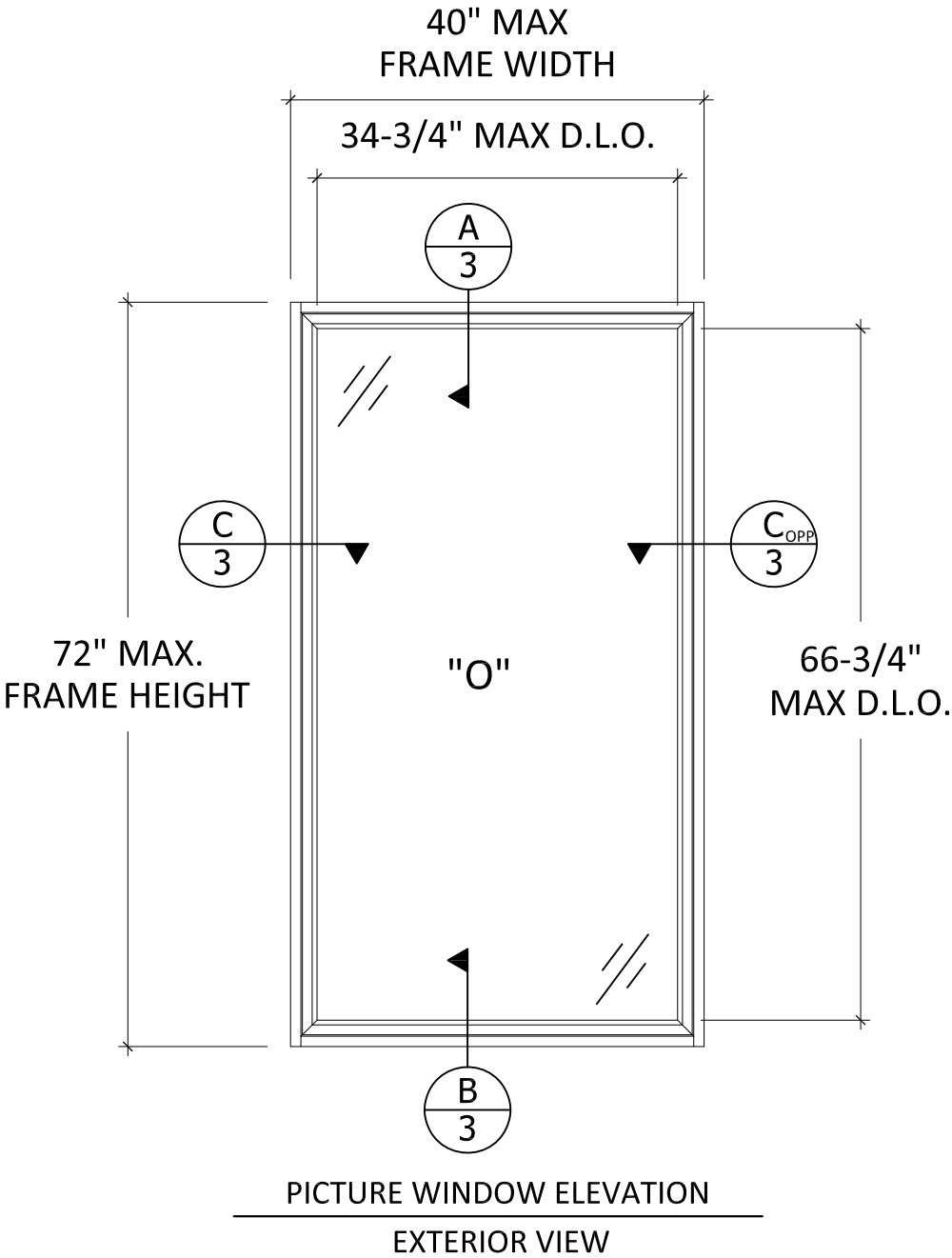
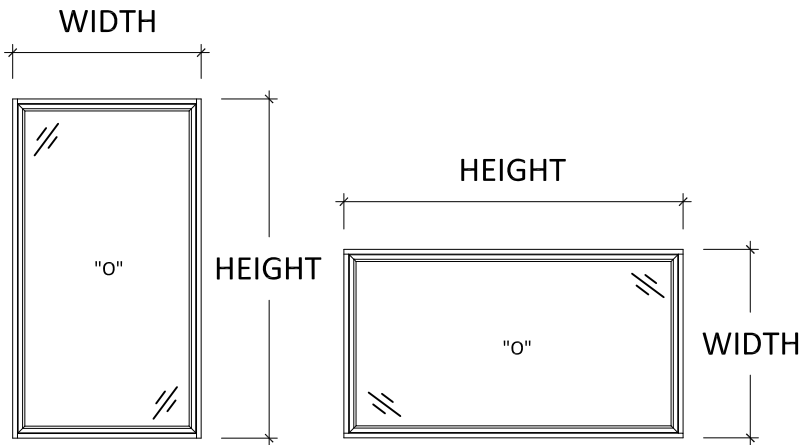


TABLE OF CONTENTS	
SHEET	SHEET DESCRIPTION
1	ELEVATION AND GENERAL NOTES
2	ANCHOR LOCATIONS & INSTALLATION NOTES
3	HORIZONTAL AND VERTICAL SECTIONS
4	COMPONENTS, BOM & GLAZING DETAILS

DESIGN PRESSURE RATING		
OVERALL SIZE	DESIGN PRESSURE	MISSILE IMPACT RATING
40" X 72"	+/- 70 PSF	LARGE MISSILE IMPACT



NOTE: PICTURE WINDOW HEIGHT AND WIDTH MAY BE INTERCHANGED SUCH THAT MAXIMUM DIMENSIONS ARE NOT EXCEEDED AND TYPICAL LONG LEG/SHORT LEG ANCHOR LAYOUTS ARE FOLLOWED

PREPARED BY:



BUILDING DROPS, INC.
398 E. DANIA BEACH BLVD., STE. 338
DANIA BEACH, FL 33004
PH: (954)399-8478
FAX: (954)744.4738
WEB: www.buildingdrops.com

TITLE:
CONTINENTAL SERIES
PICTURE WINDOW
(HVHZ) (IMPACT)
ELEVATION AND GENERAL NOTES

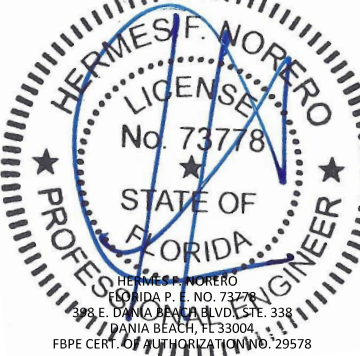
P.O. BOX 2097
BARCELONETA, PR 00617
WWW.AIRMASTERPR.COM
PH: (787)846-2110
FAX: (787)623-0085

AIR MASTER
windows and doors



REMARKS	BY	DATE

THE INSTALLATION DETAILS DESCRIBED HERE IN ARE GENERIC AND MAY NOT REFLECT ACTUAL CONDITIONS FOR A SPECIFIC SITE. IF SITE CONDITIONS CAUSE INSTALLATION TO DEVIATE FROM THE REQUIREMENTS DETAILED HEREIN, A LICENSED ENGINEER OR ARCHITECT SHALL PREPARE SITE SPECIFIC DOCUMENTS FOR USE WITH THIS DOCUMENT.



FL21987

DATE: 01/28/17

DWG. BY:
SM

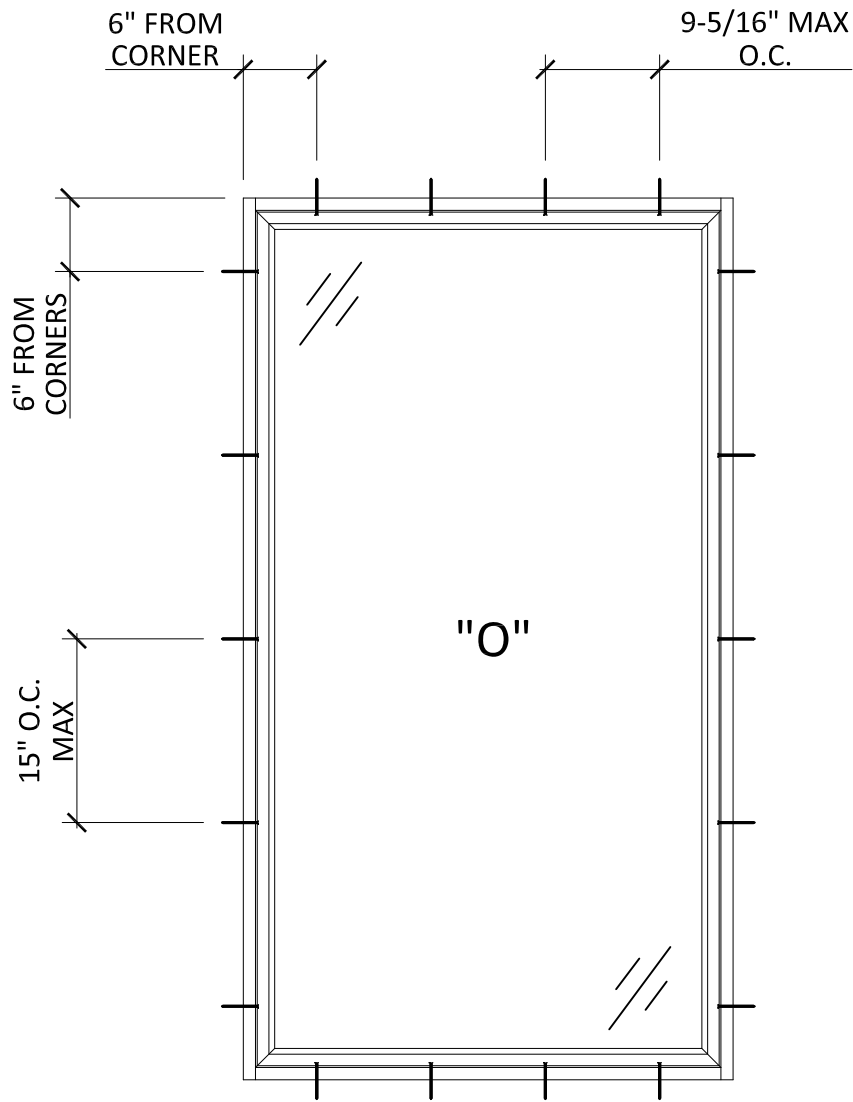
CHK. BY:
HFN

SCALE: NTS

DWG. #: AIR012

SHEET: OF 4

1



PICTURE WINDOW ANCHOR LAYOUT
EXTERIOR VIEW

INSTALLATION NOTES:

- ONE (1) INSTALLATION ANCHOR FOR EACH ANCHOR LOCATION SHOWN.
- THE NUMBER OF INSTALLATION ANCHORS DEPICTED IS THE MINIMUM NUMBER OF ANCHORS TO BE USED FOR PRODUCT INSTALLATION.
- INSTALL INDIVIDUAL INSTALLATION ANCHORS WITHIN A TOLERANCE OF $\pm 1/2$ INCH OF THE DEPICTED LOCATION IN THE ANCHOR LAYOUT DETAIL (I.E., WITHOUT CONSIDERATION OF TOLERANCES). TOLERANCES ARE NOT CUMULATIVE FROM ONE INSTALLATION ANCHOR TO THE NEXT.
- SHIM AS REQUIRED AT EACH INSTALLATION ANCHOR WITH LOAD BEARING SHIM(S). MAXIMUM ALLOWABLE SHIM STACK TO BE 1/4 INCH. SHIM WHERE SPACE OF 1/16 INCH OR GREATER OCCURS. SHIM(S) SHALL BE CONSTRUCTED OF HIGH DENSITY PLASTIC OR BETTER.
- FOR INSTALLATION DIRECTLY INTO CONCRETE/MASONRY, USE 1/4 INCH DIAMETER ELCO ULTRACON OF SUFFICIENT LENGTH TO ACHIEVE 1 1/4 INCH MINIMUM EMBEDMENT.
- FOR INSTALLATION DIRECTLY INTO WOOD FRAME, USE #14 WOOD SCREWS OF SUFFICIENT LENGTH TO ACHIEVE 1 1/2 INCH MINIMUM EMBEDMENT.
- MINIMUM EMBEDMENT AND EDGE DISTANCE EXCLUDE WALL FINISHES, INCLUDING BUT NOT LIMITED TO STUCCO, FOAM, BRICK VENEER, AND SIDING.
- INSTALLATION ANCHORS AND ASSOCIATED HARDWARE MUST BE MADE OF CORROSION RESISTANT MATERIAL OR HAVE A CORROSION RESISTANT COATING.
- FOR HOLLOW BLOCK AND GROUT FILLED BLOCK, DO NOT INSTALL INSTALLATION ANCHORS INTO MORTAR JOINTS. EDGE DISTANCE IS MEASURED FROM FREE EDGE OF BLOCK OR EDGE OF MORTAR JOINT INTO FACE SHELL OF BLOCK.
- INSTALLATION ANCHORS SHALL BE INSTALLED IN ACCORDANCE WITH ANCHOR MANUFACTURER'S INSTALLATION INSTRUCTIONS, AND ANCHORS SHALL NOT BE USED IN SUBSTRATES WITH STRENGTHS LESS THAN THE MINIMUM STRENGTH SPECIFIED BY THE ANCHOR MANUFACTURER.
- INSTALLATION ANCHOR CAPACITIES FOR PRODUCTS HEREIN ARE BASED ON SUBSTRATE MATERIALS WITH THE FOLLOWING PROPERTIES:
 - WOOD - MINIMUM SPECIFIC GRAVITY OF 0.55.
 - CONCRETE -MINIMUM COMPRESSIVE STRENGTH OF 3000 PSI.
 - GROUT-FILLED CMU- UNIT STRENGTH CONFORMS TO ASTM C-90 WITH MINIMUM COMPRESSIVE STRENGTH OF 2000 PSI AND GROUT CONFORMS TO ASTM C 476, MINIMUM GROUT COMPRESSIVE STRENGTH OF 2000 PSI.
 - HOLLOW BLOCK CMU - UNIT STRENGTH CONFORMS TO ASTM C-90 WITH MINIMUM COMPRESSIVE STRENGTH OF 2000 PSI.

PREPARED BY:



BUILDING DROPS, INC.

398 E. DANIA BEACH BLVD., STE. 338
DANIA BEACH, FL 33004
PH: (954)399-8478
FAX: (954)744.4738
WEB: www.buildingdrops.com

TITLE:
CONTINENTAL SERIES
PICTURE WINDOW
(HVHZ) (IMPACT)
ANCHOR LOCATIONS AND
INSTALLATION NOTES

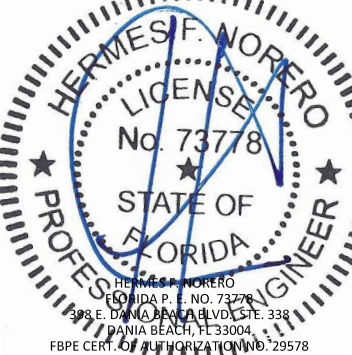
P.O. BOX 2097
BARCELONETA, PR 00617
WWW.AIRMASTERPR.COM
PH: (787)846-2110
FAX: (787)623-0085

AIR MASTER
windows and doors



REMARKS	BY	DATE

THE INSTALLATION DETAILS DESCRIBED HERE IN ARE GENERIC AND MAY NOT REFLECT ACTUAL CONDITIONS FOR A SPECIFIC SITE. IF SITE CONDITIONS CAUSE INSTALLATION TO DEVIATE FROM THE REQUIREMENTS DETAILED HEREIN, A LICENSED ENGINEER OR ARCHITECT SHALL PREPARE SITE SPECIFIC DOCUMENTS FOR USE WITH THIS DOCUMENT.



FL21987

DATE: 01/28/17

DWG. BY:
SM

CHK. BY:
HFN

SCALE: NTS

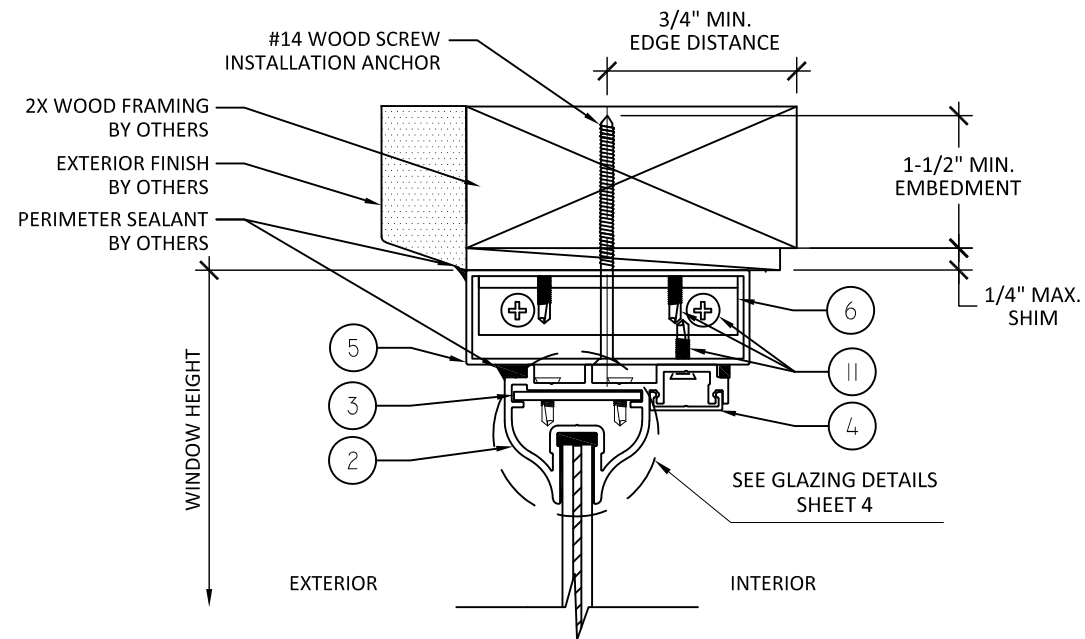
DWG. #: AIR012

SHEET: OF 4

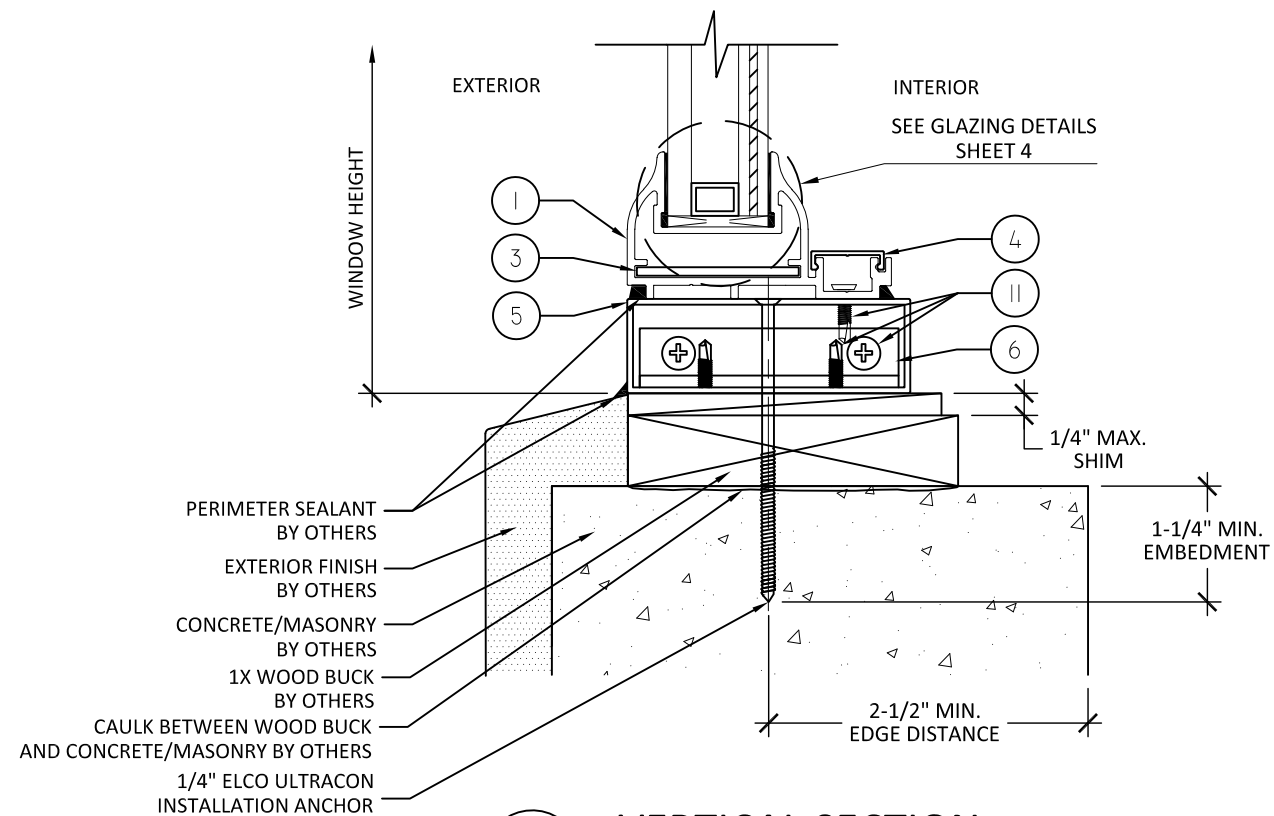
2

11/13/2020 6:08 PM

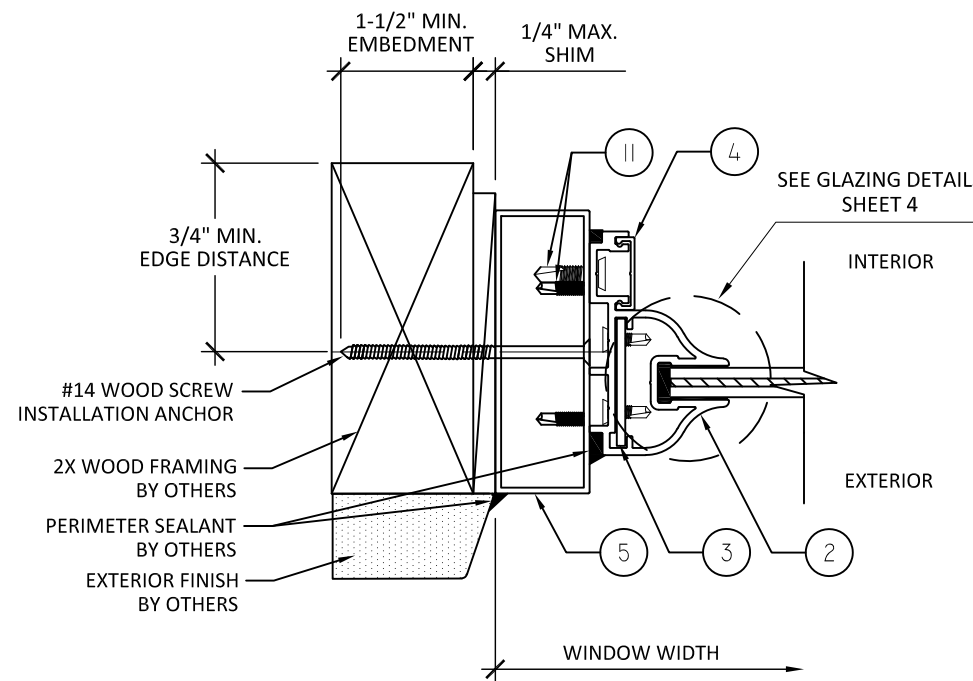
s:\projects\air-master-windows & doors\cc-20-1036 - fbc 2020 (ver. 7) code change\dwgs\1121987-r1\air-012 continental series picture window.dwg



A
3 VERTICAL SECTION
HEAD - 2X WOOD FRAME



B
3 VERTICAL SECTION
SILL - CONCRETE/MASONRY
WITH 1X WOOD BUCK



C
3 HORIZONTAL SECTION
JAMB-WOOD BUCK

PREPARED BY:



BUILDING DROPS, INC.

398 E. DANIA BEACH BLVD., STE. 338
DANIA BEACH, FL 33004
PH: (954)399-8478
FAX: (954)744.4738
WEB: www.buildingdrops.com

CONTINENTAL SERIES
PICTURE WINDOW
(HVHZ) (IMPACT)
VERTICAL AND HORIZONTAL
SECTIONS

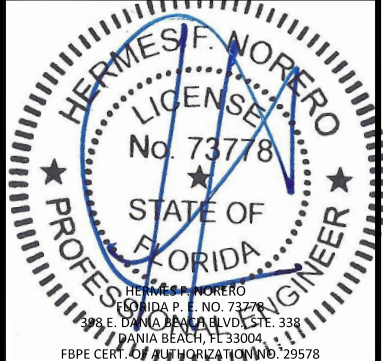
P.O. BOX 2097
BARCELONETA, PR 00617
WWW.AIRMASTERPR.COM
PH: (787)846-2110
FAX: (787)623-0085

AIR MASTER
windows and doors



REMARKS	BY	DATE

THE INSTALLATION DETAILS DESCRIBED HERE IN ARE GENERIC AND MAY NOT REFLECT ACTUAL CONDITIONS FOR A SPECIFIC SITE. IF SITE CONDITIONS CAUSE INSTALLATION TO DEVIATE FROM THE REQUIREMENTS DETAILED HEREIN, A LICENSED ENGINEER OR ARCHITECT SHALL PREPARE SITE SPECIFIC DOCUMENTS FOR USE WITH THIS DOCUMENT.



FL21987

DATE: **01/28/17**

DWG. BY:
SM

CHK. BY:
HFN

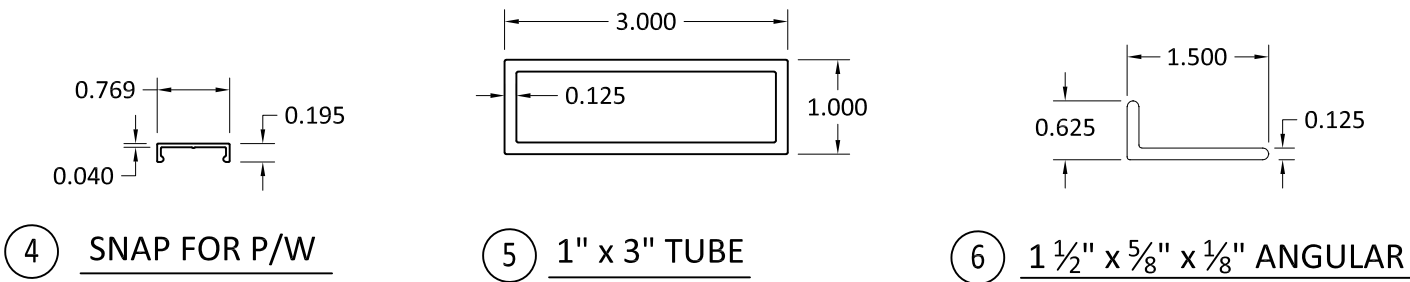
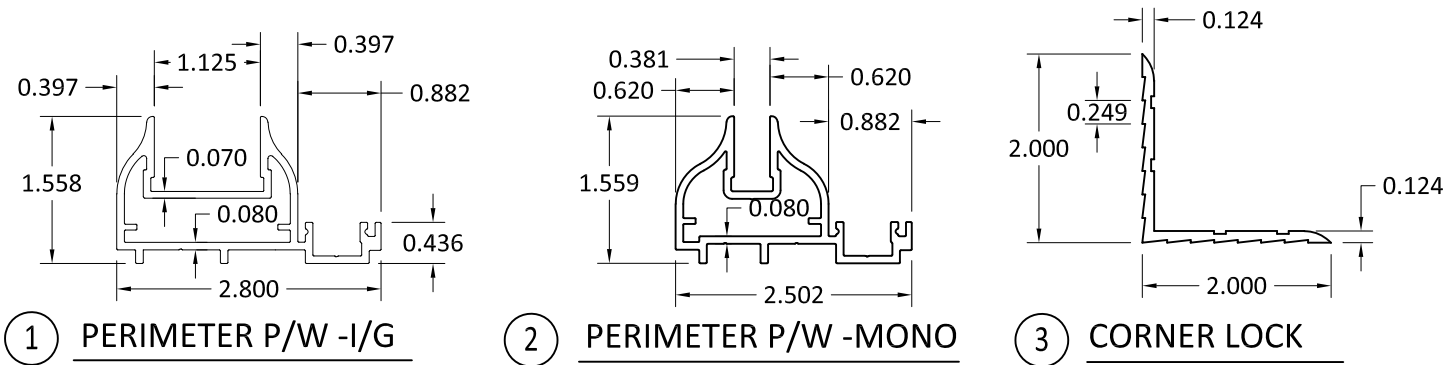
SCALE: **NTS**

DWG. #: **AIR012**

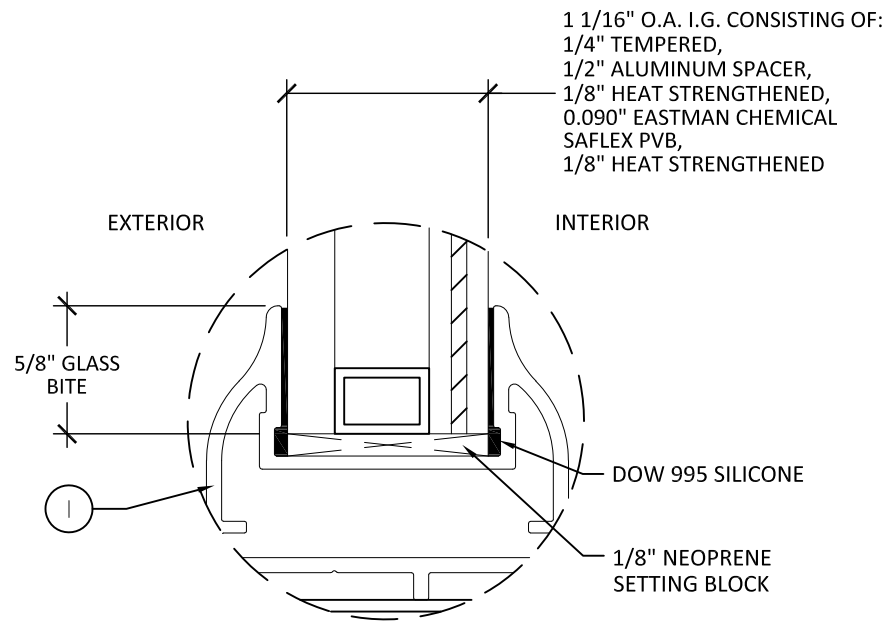
SHEET: OF 4

3

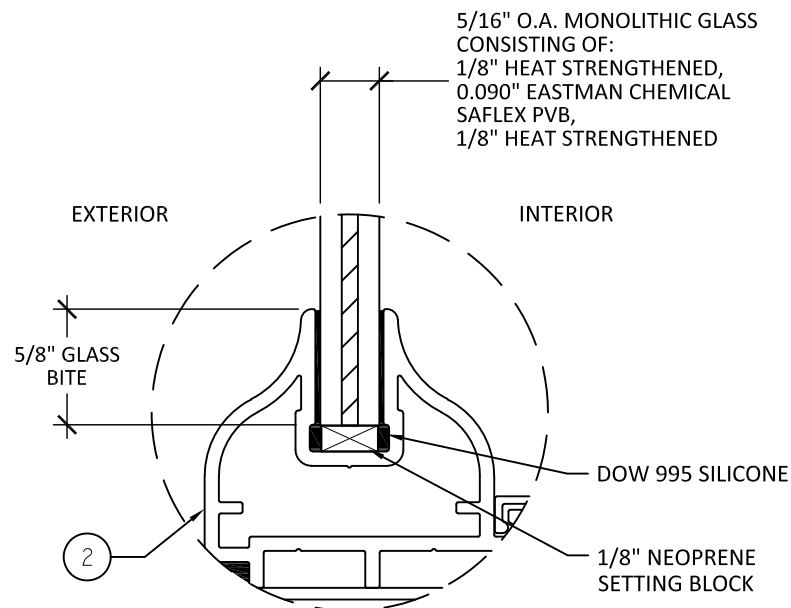
s:\projects\air-master\windows & doors\cc-20-1036- fbc 2020 (ver. 7) code change\dwg\1121987-r1\air-012 continental series picture window.dwg 11/13/2020 6:08 PM



ITEM #	PART #	ITEM DESCRIPTION	MANUFACTURER/NOTES
PARTS & EXTRUSIONS			
1	76849	PERIMETER P/W CONT - 1-16" IG GLASS	FUNDICIONES INDUSTRIALES / 6063-T5
2	76832	PERIMETER P/W CONT - 5/16" MONO. GLASS	FUNDICIONES INDUSTRIALES / 6063-T5
3	11080	CORNER LOCK	GLOBAL HOLDEX / 6063-T5
4	76830	SNAP FOR P/W	FUNDICIONES INDUSTRIALES / 6063-T5
5	57555	1" x 3" TUBE @ .125	GLOBAL HOLDEX / 6063-T6
6	96534	ANGULAR 1 1/2" x 5/8" x 1/8"	GLOBAL HOLDEX / 6063-T5
GLASS			
7		INSULATED GLASS 1 1/16" (1/4 TEMP- 1/2 ALUM SPACER- 1/8 HS- .090 SAFLEX- 1/8 HS)	TECHNOGLASS
8		IMPACT GLASS 5/16 CLEAR HEAT STRENG. (1/8 HS - .090 SAFLEX - 1/8 HS)	TECHNOGLASS
SEALS & SEALANTS			
9	53580	DC-995 STRUCTURAL SILICONE	DOW CORNING
10	96900	RUBBER SETTING BLOCK DM-70	H-O PRODUCTS CORPORATION
FASTENERS			
11	95691	SCR 10-24*5/8 PHI F/H S/S S/D	LA CASA DE LOS TORNILLOS



GLAZING DETAIL 1



GLAZING DETAIL 2

- GLAZING NOTES:
- GLASS TYPE AND THICKNESS COMPLIES WITH ASTM E1300 REQUIREMENTS AS WELL AS APPLICABLE SAFETY GLAZING REQUIREMENTS PER THE FBC. THICKNESS, TEMPER, AND SAFETY GLAZING REQUIREMENTS SHALL BE REVIEWED ON A SITE SPECIFIC BASIS.
 - SETTING BLOCK DUROMETER HARDNESS OF 70-90 (SHORE A) AS REFERENCED IN FBC CHAPTER 24.
 - SETTING BLOCKS TO BE LOCATED AT 1/4 SPAN LENGTH FOR GLASS WIDER THAN 36" AS PER FBC CHAPTER 24.

- NOTES:
- GLAZING DETAILS 1 AND 2 ARE APPROVED FOR USE AT THE MAXIMUM PRESSURE AND SIZE QUALIFIED.

PREPARED BY:

BUILDING DROPS, INC.
398 E. DANIA BEACH BLVD., STE. 338
DANIA BEACH, FL 33004
PH: (954)399-8478
FAX: (954)744.4738
WEB: www.buildingdrops.com

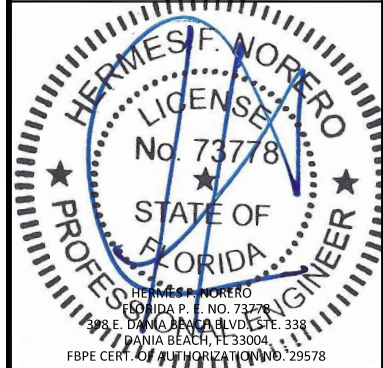
TITLE: CONTINENTAL SERIES
PICTURE WINDOW
(HVHZ) (IMPACT)
GLAZING DETAILS, COMPONENTS
AND BILL OF MATERIALS

P.O. BOX 2097
BARCELONETA, PR 00617
WWW.AIRMASTERPR.COM
PH: (787)846-2110
FAX: (787)623-0085

AIR MASTER
windows and doors

REMARKS	BY	DATE

THE INSTALLATION DETAILS DESCRIBED HERE IN ARE GENERIC AND MAY NOT REFLECT ACTUAL CONDITIONS FOR A SPECIFIC SITE. IF SITE CONDITIONS CAUSE INSTALLATION TO DEVIATE FROM THE REQUIREMENTS DETAILED HEREIN, A LICENSED ENGINEER OR ARCHITECT SHALL PREPARE SITE SPECIFIC DOCUMENTS FOR USE WITH THIS DOCUMENT.



FL21987

DATE:	01/28/17
DWG. BY:	CHK. BY:
SM	HFN
SCALE:	NTS
DWG. #:	AIR012
SHEET:	OF 4