

11/13/2020 5:51 PM

s:\projects\air master windows & doors\cc-20-1036 - fbc 2020 (ver. 7) code change\dwg\1021457-1\air015 - single hung with insulated glass.dwg

AIR MASTER AWNING, LLC

SINGLE HUNG WINDOW WITH INSULATED GLASS (HVHZ) (IMPACT)

GENERAL NOTES:

1. THE PRODUCT SHOWN HEREIN IS DESIGNED AND MANUFACTURED TO COMPLY WITH THE CURRENT FLORIDA BUILDING CODE (FBC), INCLUDING HVHZ AND HAS BEEN EVALUATED ACCORDING TO THE FOLLOWING:
 - TAS 201-94
 - TAS 202-94
 - TAS 203-94
2. ADEQUACY OF THE EXISTING STRUCTURAL CONCRETE/MASONRY, STEEL, AND 2X FRAMING AS A MAIN WIND FORCE RESISTING SYSTEM CAPABLE OF WITHSTANDING AND TRANSFERRING APPLIED PRODUCT LOADS TO THE FOUNDATION IS THE RESPONSIBILITY OF THE ENGINEER OR ARCHITECT OF RECORD FOR THE PROJECT OF INSTALLATION.
3. 1X AND 2X BUCKS (WHEN USED) SHALL BE DESIGNED AND ANCHORED TO PROPERLY TRANSFER ALL LOADS TO THE STRUCTURE. BUCK DESIGN AND INSTALLATION IS THE RESPONSIBILITY OF THE ENGINEER OR ARCHITECT OF RECORD FOR THE PROJECT OF INSTALLATION.
4. THE INSTALLATION DETAILS DESCRIBED HEREIN ARE GENERIC AND MAY NOT REFLECT ACTUAL CONDITIONS FOR A SPECIFIC SITE. IF SITE CONDITIONS CAUSE INSTALLATION TO DEVIATE FROM THE REQUIREMENTS DETAILED HEREIN, A LICENSED ENGINEER OR ARCHITECT SHALL PREPARE SITE SPECIFIC DOCUMENTS FOR USE WITH THIS DOCUMENT IN NON-HVHZ AREAS. IN HVHZ AREAS, ONE TIME PRODUCT APPROVAL TO BE OBTAINED FROM MIAMI-DADE RER.
5. APPROVED IMPACT PROTECTIVE SYSTEM **IS NOT REQUIRED** ON THIS PRODUCT IN AREAS REQUIRING IMPACT RESISTANCE.
6. WINDOW FRAME MATERIAL: ALUMINUM 6063-T5
7. DISSIMILAR METALS INCLUDING FASTENERS THAT MAY COME INTO CONTACT WITH ALUMINUM UNIT FRAMING SHALL BE PROTECTED IN ACCORDANCE WITH THE FBC.
8. GLASS MEETS THE REQUIREMENTS OF ASTM E 1300 GLASS CHARTS. SEE SHEET 1 FOR GLAZING DETAIL.

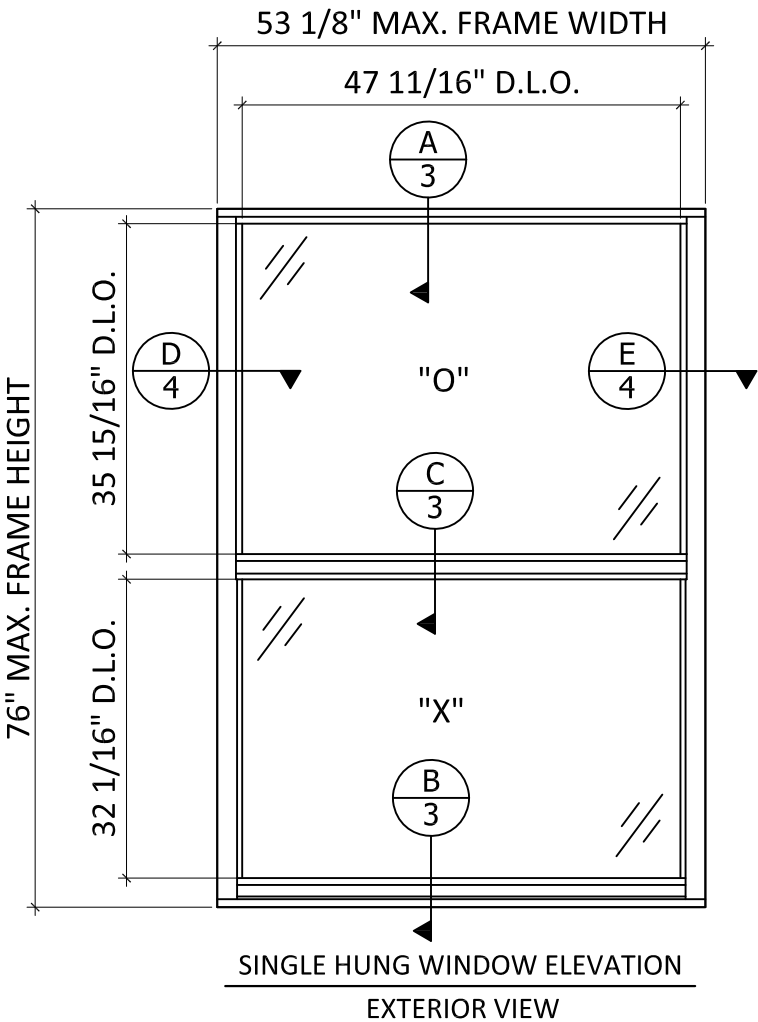
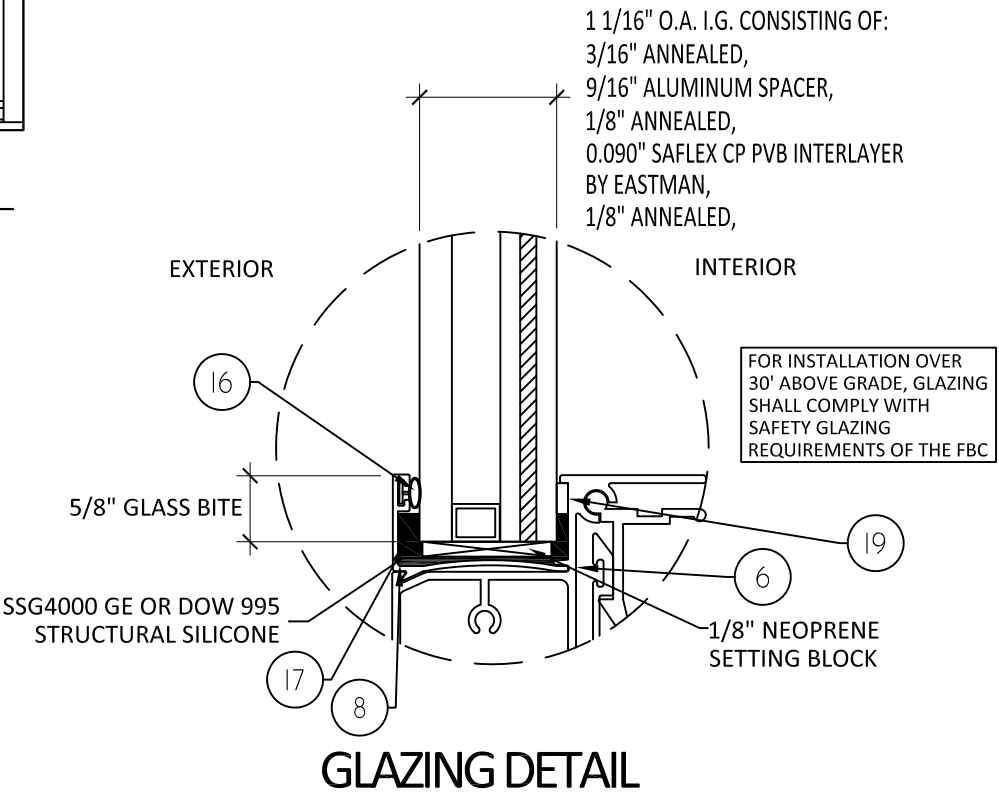


TABLE OF CONTENTS	
SHEET	SHEET DESCRIPTION
1	GENERAL NOTES, GLAZING DETAIL, AND ELEVATION VIEWS
2	ANCHOR LOCATIONS & INSTALLATION NOTES
3	VERTICAL SECTIONS
4	HORIZONTAL SECTIONS
5	COMPONENTS AND BILL OF MATERIALS

DESIGN PRESSURE RATING		
OVERALL SIZE	DESIGN PRESSURE	MISSILE IMPACT RATING
53 1/8" X 76"	+/- 73.7 PSF	LARGE AND SMALL MISSILE IMPACT



P.O. BOX 2097
BARCELONETA, PR 00617
WWW.AIRMASTERPR.COM

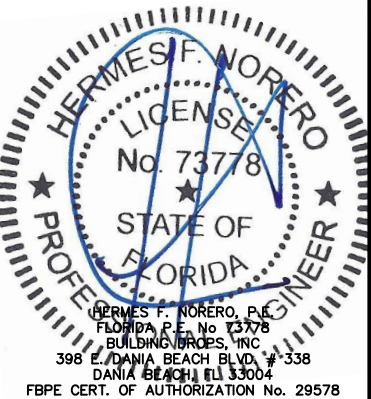
PH: (603) 627-3861 FAX: (787)623-0085

TITLE: SINGLE HUNG WINDOW
WITH INSULATED GLASS
(HVHZ) (IMPACT)
ELEVATIONS, GENERAL NOTES
AND GLAZING DETAIL

PREPARED BY:
BUILDING DROPS, INC.
398 E. DANIA BEACH BLVD., STE. 338
DANIA BEACH, FL 33004
PH: (954)399-8478
FAX: (954)744-4738
WEB: www.buildingdrops.com

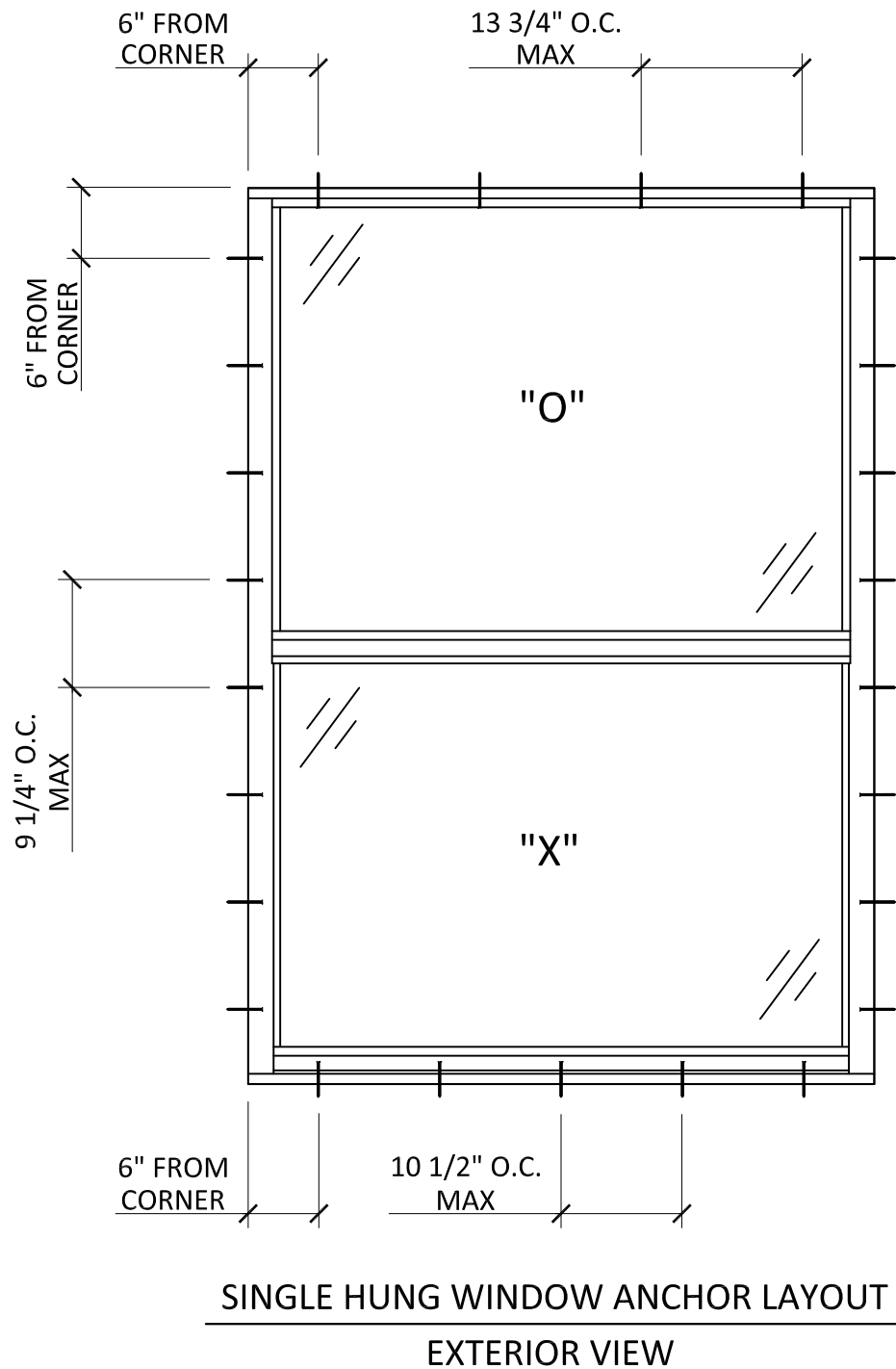
REMARKS	BY	DATE
6TH FBC CODE CHANGE	CL	8.23.17

THE INSTALLATION DETAILS DESCRIBED HEREIN ARE GENERIC AND MAY NOT REFLECT ACTUAL CONDITIONS FOR A SPECIFIC SITE. IF SITE CONDITIONS CAUSE INSTALLATION TO DEVIATE FROM THE REQUIREMENTS DETAILED HEREIN, A LICENSED ENGINEER OR ARCHITECT SHALL PREPARE SITE SPECIFIC DOCUMENTS FOR USE WITH THIS DOCUMENT.



FL #:	FL21457
DATE:	08.23.17
DWG. BY:	CL
CHK. BY:	HFN
SCALE:	NTS
DWG. #:	AIR015
SHEET:	1
	OF 5

s:\projects\air master windows & doors\cc-20-1036 - fbc 2020 (ver.7) code change\dwgs\021457-r1\air015 - single hung with insulated glass.dwg 11/13/2020 5:51 PM



INSTALLATION NOTES:

- ONE (1) INSTALLATION ANCHOR FOR EACH ANCHOR LOCATION SHOWN.
- THE NUMBER OF INSTALLATION ANCHORS DEPICTED IS THE MINIMUM NUMBER OF ANCHORS TO BE USED FOR PRODUCT INSTALLATION.
- INSTALL INDIVIDUAL INSTALLATION ANCHORS WITHIN A TOLERANCE OF $\pm 1/2$ INCH OF THE DEPICTED LOCATION IN THE ANCHOR LAYOUT DETAIL (I.E., WITHOUT CONSIDERATION OF TOLERANCES). TOLERANCES ARE NOT CUMULATIVE FROM ONE INSTALLATION ANCHOR TO THE NEXT.
- SHIM AS REQUIRED AT EACH INSTALLATION ANCHOR WITH LOAD BEARING SHIM(S). MAXIMUM ALLOWABLE SHIM STACK TO BE 1/4 INCH. SHIM WHERE SPACE OF 1/16 INCH OR GREATER OCCURS. SHIM(S) SHALL BE CONSTRUCTED OF HIGH DENSITY PLASTIC OR BETTER.
- FOR INSTALLATION DIRECTLY INTO CONCRETE/MASONRY, USE 1/4 INCH DIAMETER ELCO ULTRACON OF SUFFICIENT LENGTH TO ACHIEVE 1 1/4 INCH MINIMUM EMBEDMENT.
- FOR INSTALLATION DIRECTLY INTO WOOD FRAME, USE #14 WOOD SCREWS OF SUFFICIENT LENGTH TO ACHIEVE 1 1/2 INCH MINIMUM EMBEDMENT.
- MINIMUM EMBEDMENT AND EDGE DISTANCE EXCLUDE WALL FINISHES, INCLUDING BUT NOT LIMITED TO STUCCO, FOAM, BRICK VENEER, AND SIDING.
- INSTALLATION ANCHORS AND ASSOCIATED HARDWARE MUST BE MADE OF CORROSION RESISTANT MATERIAL OR HAVE A CORROSION RESISTANT COATING.
- FOR HOLLOW BLOCK AND GROUT FILLED BLOCK, DO NOT INSTALL INSTALLATION ANCHORS INTO MORTAR JOINTS. EDGE DISTANCE IS MEASURED FROM FREE EDGE OF BLOCK OR EDGE OF MORTAR JOINT INTO FACE SHELL OF BLOCK.
- INSTALLATION ANCHORS SHALL BE INSTALLED IN ACCORDANCE WITH ANCHOR MANUFACTURER'S INSTALLATION INSTRUCTIONS, AND ANCHORS SHALL NOT BE USED IN SUBSTRATES WITH STRENGTHS LESS THAN THE MINIMUM STRENGTH SPECIFIED BY THE ANCHOR MANUFACTURER.
- INSTALLATION ANCHOR CAPACITIES FOR PRODUCTS HEREIN ARE BASED ON SUBSTRATE MATERIALS WITH THE FOLLOWING PROPERTIES:
 - WOOD - MINIMUM SPECIFIC GRAVITY OF 0.55.
 - CONCRETE - MINIMUM COMPRESSIVE STRENGTH OF 3000 PSI.
 - GROUT-FILLED CMU- UNIT STRENGTH CONFORMS TO ASTM C-90 WITH MINIMUM COMPRESSIVE STRENGTH OF 2000 PSI AND GROUT CONFORMS TO ASTM C 476, MINIMUM GROUT COMPRESSIVE STRENGTH OF 2000 PSI.
 - HOLLOW BLOCK CMU - UNIT STRENGTH CONFORMS TO ASTM C-90 WITH MINIMUM COMPRESSIVE STRENGTH OF 2000 PSI.



P.O. BOX 2097
BARCELONETA, PR 00617
WWW.AIRMASTERPR.COM

PH: (603) 627-3861 FAX: (787)623-0085

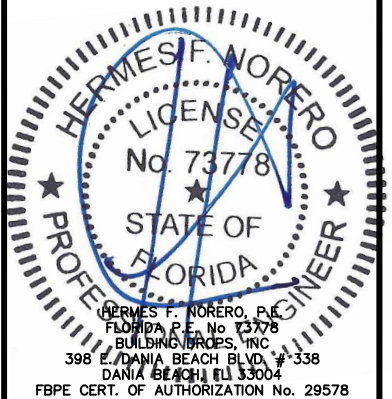
TITLE: SINGLE HUNG WINDOW
WITH INSULATED GLASS
(HVHZ) (IMPACT)
ANCHOR LOCATIONS

PREPARED BY:
BUILDING DROPS, INC.
398 E. DANIA BEACH BLVD., STE. 338
DANIA BEACH, FL 33004
PH: (954)395-8478
FAX: (954)744-4738
WEB: www.buildingdrops.com



REMARKS	BY	DATE
6TH FBC CODE CHANGE	CL	8.23.17

THE INSTALLATION DETAILS DESCRIBED HERE IN ARE GENERIC AND MAY NOT REFLECT ACTUAL CONDITIONS FOR A SPECIFIC SITE. IF SITE CONDITIONS CAUSE INSTALLATION TO DEVIATE FROM THE REQUIREMENTS DETAILED HEREIN, A LICENSED ENGINEER OR ARCHITECT SHALL PREPARE SITE SPECIFIC DOCUMENTS FOR USE WITH THIS DOCUMENT.



FL #: **FL21457**

DATE: **08.23.17**

DWG. BY: CL	CHK. BY: HFN
-----------------------	------------------------

SCALE: **NTS**

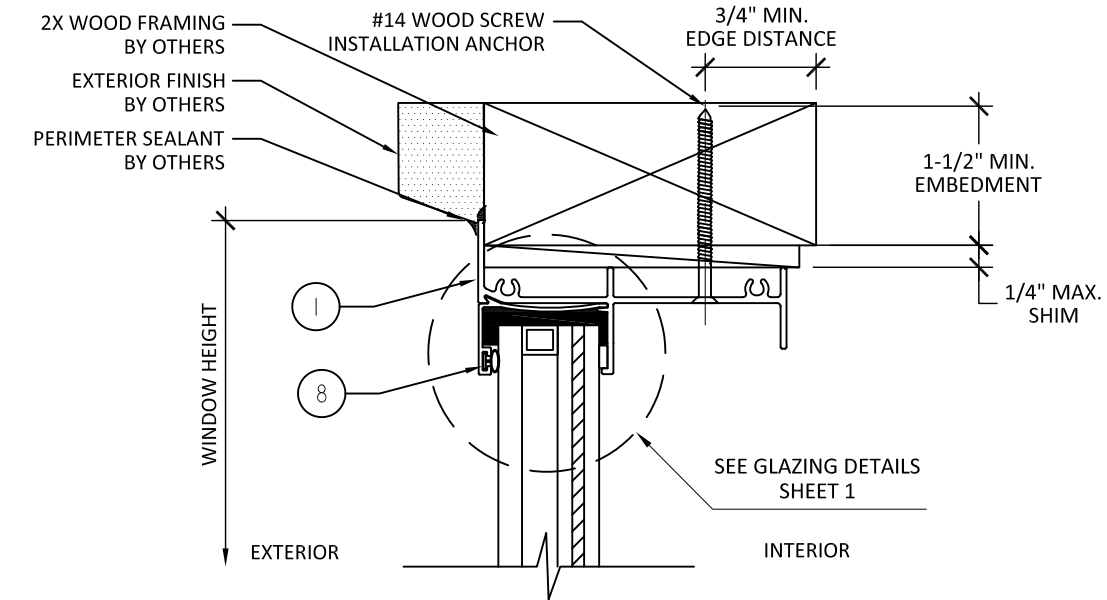
DWG. #: **AIR015**

SHEET: **2**

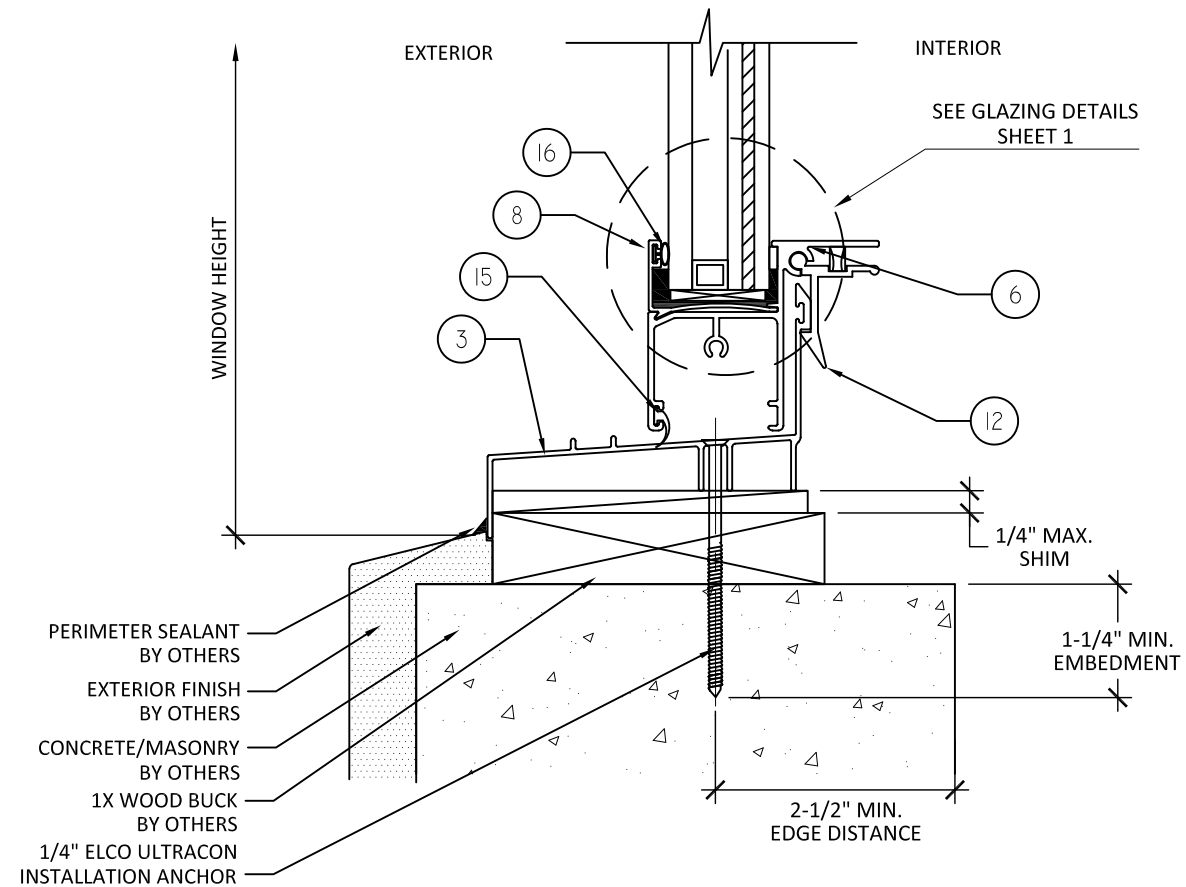
OF 5

11/13/2020 5:51 PM

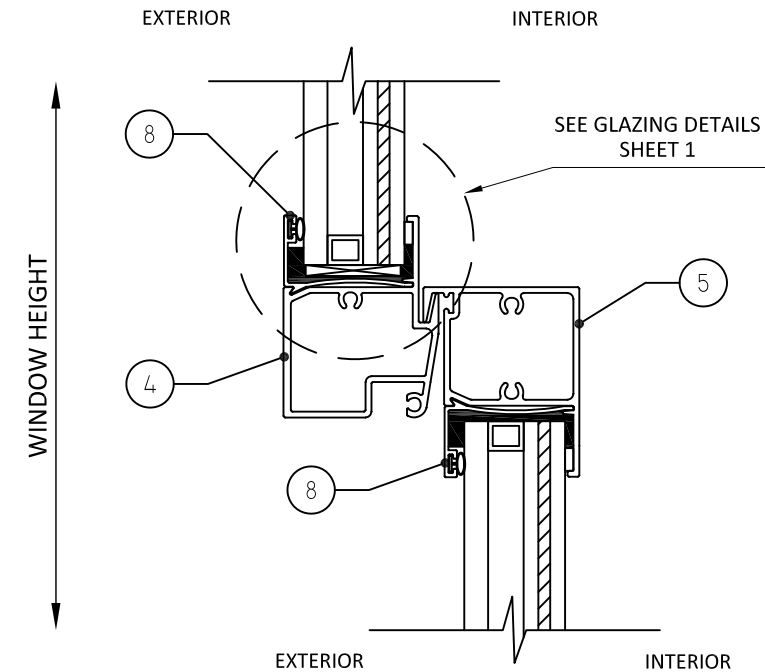
s:\projects\air master windows & doors\cc-20-036 - fbc 2020 (ver. 7) code change\dwgs\021457-r1\air015 - single hung with insulated glass.dwg



A
3 VERTICAL SECTION
HEAD - 2X WOOD FRAME



B
3 VERTICAL SECTION
SILL - CONCRETE/MASONRY
WITH 1X WOOD BUCK



C
3 VERTICAL SECTION
MEETING RAIL



P.O. BOX 2097
BARCELONETA, PR 00617
WWW.AIRMASTERPR.COM

PH: (603) 627-3861 FAX: (787)623-0085

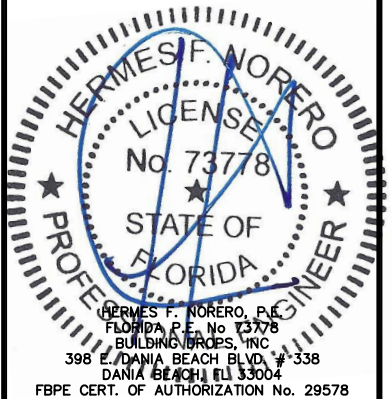
TITLE: SINGLE HUNG WINDOW
WITH INSULATED GLASS
(HVHZ) (IMPACT)
VERTICAL SECTIONS

PREPARED BY:
BUILDING DROPS, INC.
398 E. DANIA BEACH BLVD., STE. 338
DANIA BEACH, FL 33004
PH: (954)395-8478
FAX: (954)744-4738
WEB: www.buildingdrops.com



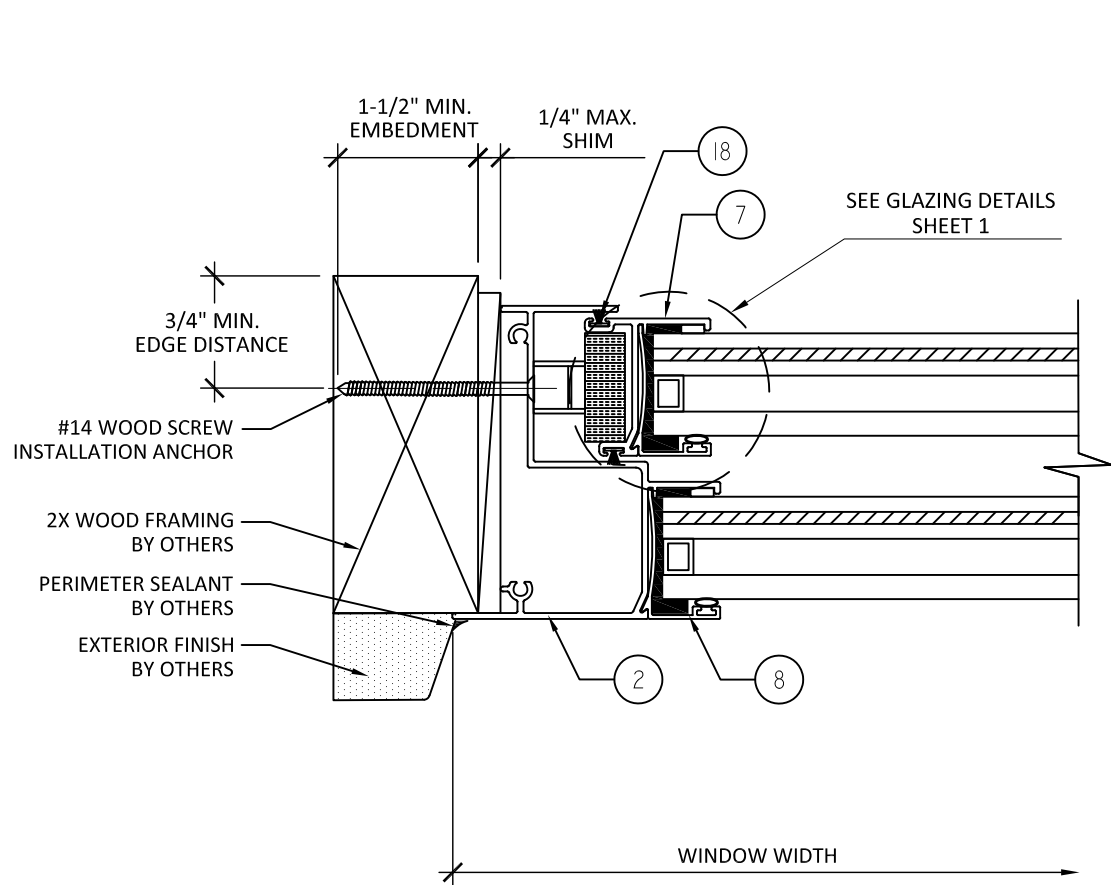
REMARKS	BY	DATE
6TH FBC CODE CHANGE	CL	8.23.17

THE INSTALLATION DETAILS DESCRIBED HERE IN ARE GENERIC
AND MAY NOT REFLECT ACTUAL CONDITIONS FOR A SPECIFIC
SITE. IF SITE CONDITIONS CAUSE INSTALLATION TO DEVIATE
FROM THE REQUIREMENTS DETAILED HEREIN, A LICENSED
ENGINEER OR ARCHITECT SHALL PREPARE SITE SPECIFIC
DOCUMENTS FOR USE WITH THIS DOCUMENT.

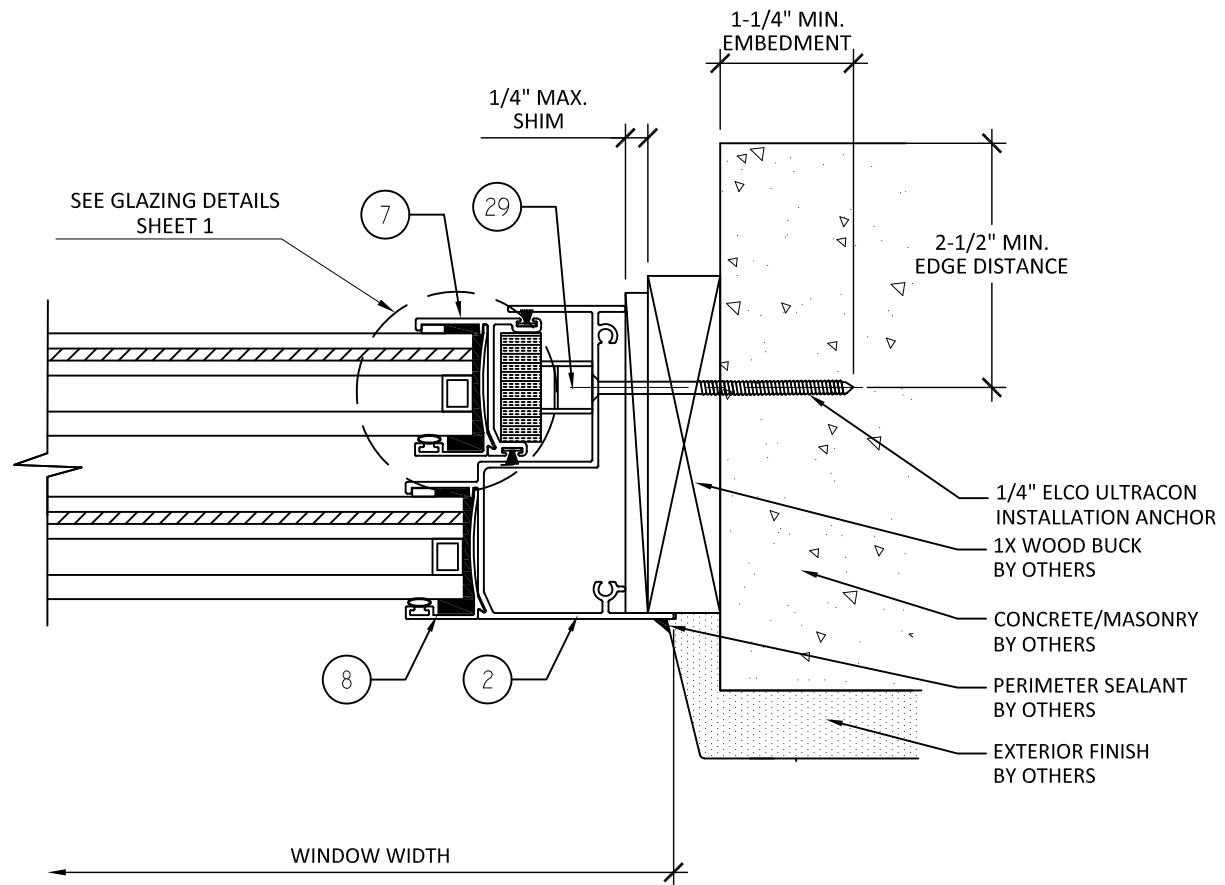


FL #:	FL21457
DATE:	08.23.17
DWG. BY:	CL
CHK. BY:	HFN
SCALE:	NTS
DWG. #:	AIR015
SHEET:	3

s:\projects\air master windows & doors\cc-20-036 - fbc change\dwgs\121457-r1\air015 - single hung with insulated glass.dwg 11/13/2020 5:51 PM



D
4 HORIZONTAL SECTION
JAMB-WOOD BUCK



E
4 HORIZONTAL SECTION
JAMB-CONCRETE/MASONRY
WITH 1X WOOD BUCK



P.O. BOX 2097
BARCELONETA, PR 00617
WWW.AIRMASTERPR.COM

PH: (603) 627-3861 FAX: (787)623-0085

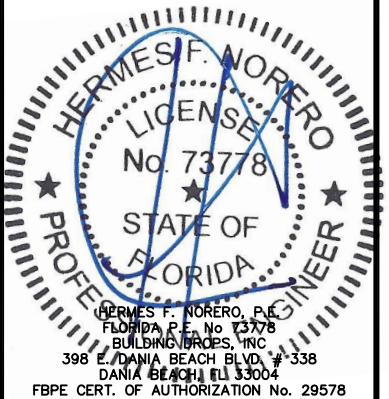
TITLE: SINGLE HUNG WINDOW
WITH INSULATED GLASS
(HVHZ) (IMPACT)
HORIZONTAL SECTIONS

PREPARED BY:
BUILDING DROPS, INC.
398 E. DANIA BEACH BLVD., STE. 338
DANIA BEACH, FL 33004
PH: (954)395-8478
FAX: (954)744-4738
WEB: www.buildingdrops.com

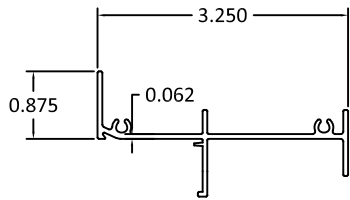


REMARKS	BY	DATE
6TH FBC CODE CHANGE	CL	8.23.17

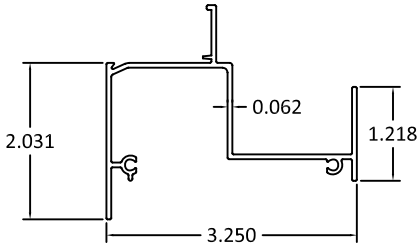
THE INSTALLATION DETAILS DESCRIBED HERE IN ARE GENERIC AND MAY NOT REFLECT ACTUAL CONDITIONS FOR A SPECIFIC SITE. IF SITE CONDITIONS CAUSE INSTALLATION TO DEVIATE FROM THE REQUIREMENTS DETAILED HEREIN, A LICENSED ENGINEER OR ARCHITECT SHALL PREPARE SITE SPECIFIC DOCUMENTS FOR USE WITH THIS DOCUMENT.



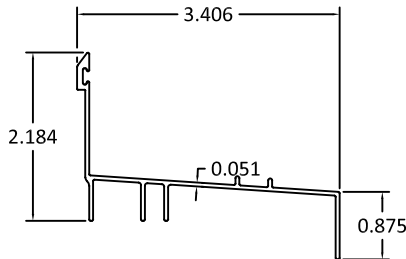
FL #:	FL21457
DATE:	08.23.17
DWG. BY:	CL
CHK. BY:	HFN
SCALE:	NTS
DWG. #:	AIR015
SHEET:	4



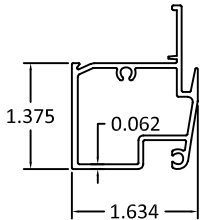
1 FRAME HEAD W/FLANGE



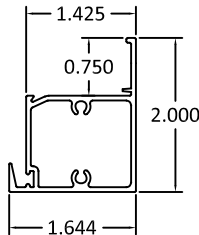
2 FRAME JAMB W/FLANGE



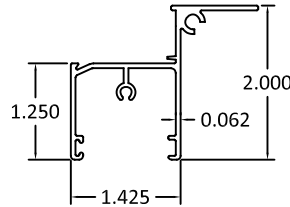
3 FRAME SILL



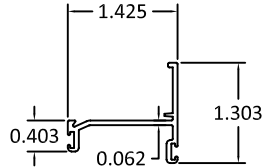
4 FIXED MEET RAIL



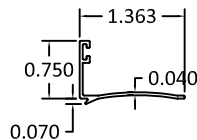
5 VENT TOP



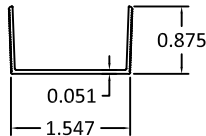
6 VENT BOTTOM



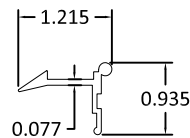
7 VENT JAMB



8 GLASS STOP



10 VENT STOP



12 SILL LOCK

ITEM #	PART #	ITEM DESCRIPTION	MANUFACTURER/NOTES
PARTS & EXTRUSIONS			
1	22559	FRAME HEAD W/FLANGE	GLOBAL HOLDEX / 6063-T5
2	22560	FRAME JAMB W/FLANGE	GLOBAL HOLDEX / 6063-T5
3	22552	FRAME SILL	GLOBAL HOLDEX / 6063-T5
4	22551	FIXED MEETING	GLOBAL HOLDEX / 6063-T5
5	22554	VENT TOP	GLOBAL HOLDEX / 6063-T5
6	22555	VENT BOTTOM	GLOBAL HOLDEX / 6063-T5
7	22556	VENT JAMB	GLOBAL HOLDEX / 6063-T5
8	22558	GLASS STOP GLAZING	GLOBAL HOLDEX / 6063-T5
9	-----	NOT USED	-----
10	22562	VENT STOP SH 250	GLOBAL HOLDEX / 6063-T5
11	96521	NOT USED	-----
12	22557	SILL LOCK	GLOBAL HOLDEX / 6063-T5
GLASS			
13		INSULATED GLASS 1 1/16" (3/16" ANN- 9/16" ALUM SPACER- 1/8" ANN - .090 SAFLEX - 1/8" ANN)	TECHNOGLASS
SEALS & SEALANTS			
14	22438	WEATHERSTRIP SILL	ULTRAFAB
15	96917	VINYL BOTTOM RAIL	SOUTHERN PLASTICS
16	96936	GOMA FP-448 BLACK	SOUTHERN PLASTICS
17	53580	DC-995 SILCON OR SSG4000 GE	Momentive / GE/ Dow Corning
18	96817	FELPA #1220 VENT JAMB	ULTRAFAB
19	96707	DOUBLE SIDED TAPE	3M
20	-----	NOT USED	-----
21	-----	NOT USED	-----
22	-----	NOT USED	-----
FASTENERS			
23	95499	SCR 8*3/4 PHI P/H SS T-A	LA CASA DE LOS TORNILLOS
24	-----	NOT USED	-----
25	-----	NOT USED	-----
26	94657	10-32 3/4" PHI F/H S/S TECK	LA CASA DE LOS TORNILLOS
27	-----	NOT USED	-----
28	-----	NOT USED	-----
HARDWARE			
29		SPRING& PULLEY BALANCE, CYLINDRICAL BALANCE	AMESBURY / DELTA
30	10694	CAM SASH BUSHING	



P.O. BOX 2097
BARCELONETA, PR 00617
WWW.AIRMASTERPR.COM

PH: (603) 627-3861 FAX: (787)623-0085

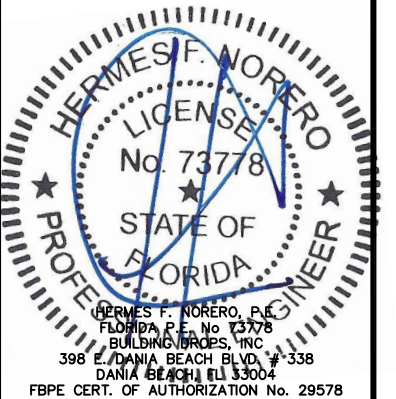
TITLE: SINGLE HUNG WINDOW
WITH INSULATED GLASS
(HVHZ) (IMPACT)
COMPONENTS AND
BILL OF MATERIALS

PREPARED BY:
BUILDING DROPS, INC.
398 E. DANIA BEACH BLVD., STE. 338
DANIA BEACH, FL 33004
PH: (954)395-8478
FAX: (954)744-4738
WEB: www.buildingdrops.com



REMARKS	BY	DATE
6TH FBC CODE CHANGE	CL	8.23.17

THE INSTALLATION DETAILS DESCRIBED HERE IN ARE GENERIC
AND MAY NOT REFLECT ACTUAL CONDITIONS FOR A SPECIFIC
SITE. IF SITE CONDITIONS CAUSE INSTALLATION TO DEVIATE
FROM THE REQUIREMENTS DETAILED HEREIN, A LICENSED
ENGINEER OR ARCHITECT SHALL PREPARE SITE SPECIFIC
DOCUMENTS FOR USE WITH THIS DOCUMENT.



FL #:
FL21457

DATE: **08.23.17**

DWG. BY: CL	CHK. BY: HFN
-----------------------	------------------------

SCALE: **NTS**

DWG. #: **AIR015**

SHEET:
5