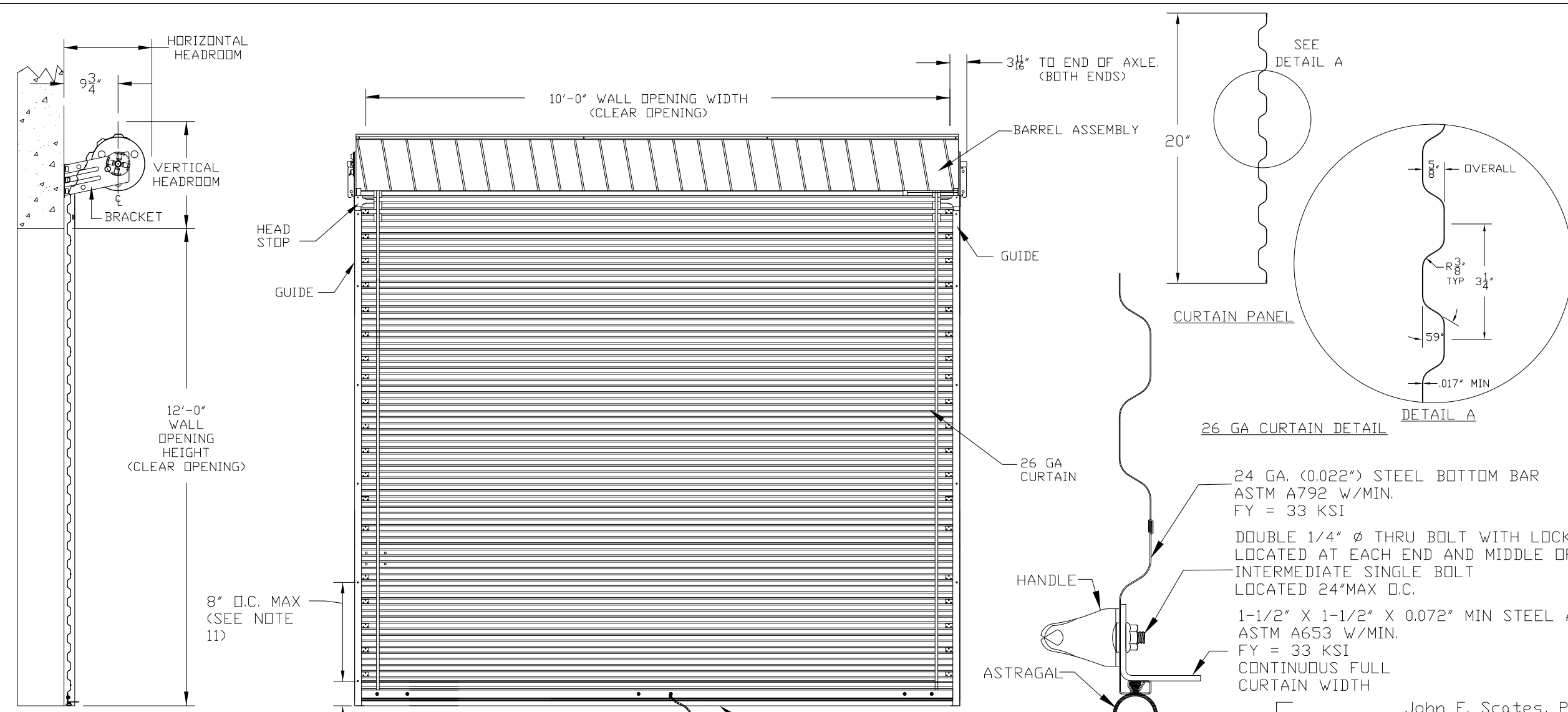
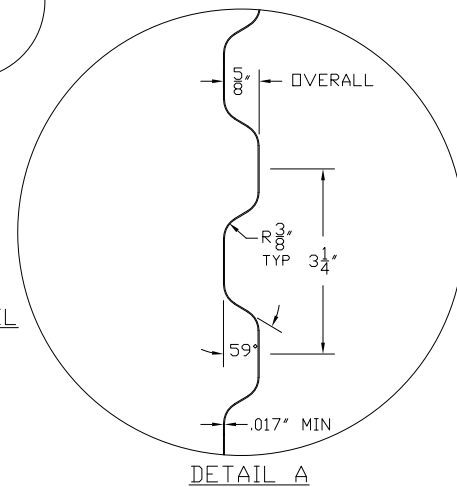


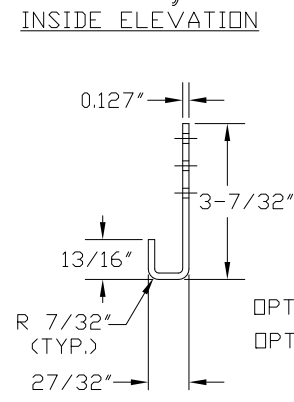
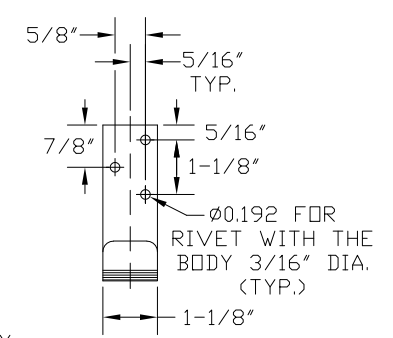
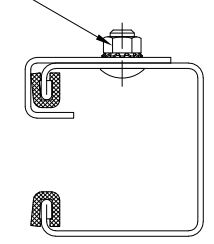
REVISIONS			
REV	DESCRIPTION	DATE	APPROVAL
-	RELEASE	10-5-22	B.A.



ASTM A653 GR80 - ZINC COATED STEEL.
 PRE-PAINTED WITH FULL COAT OF PRIMER AND BAKED SILICONIZED POLYESTER FINISH COAT



1/4" Ø THRU BOLT W/LOCK NUT PLACED AT 6" FROM BOTTOM AND EVERY 24" D.C.

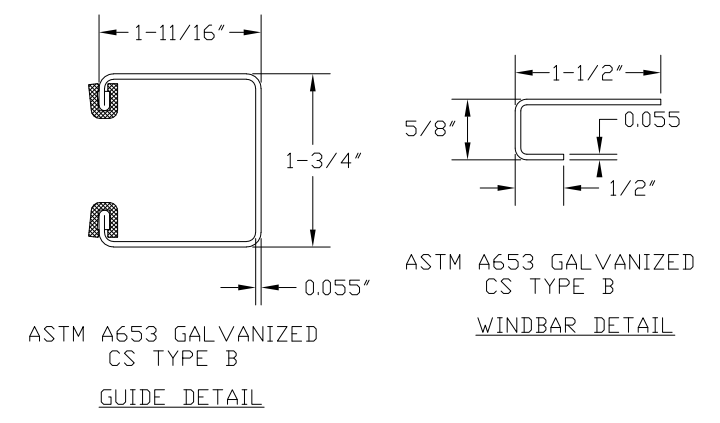


EACH WINDLOCK IS ATTACHED TO CURTAIN WITH THREE STEEL RIVETS WITH THE BODY 3/16" DIA.

OPTION 1: THE WINDLOCK SHOWN WAS TESTED.
 OPTION 2: THE SAME WINDLOCK WITH A GUSSET MAY ALSO BE USED.

John E. Scates, P.E.
 2560 King Arthur Blvd, Ste 124-54
 Lewisville, TX 75056
 FL PE 51737
 TX PE 56308/F2203

Printed copies of this document are not considered signed and sealed and the signature must be verified on any electronic copies.



THESE CONFIDENTIAL DOCUMENTS SUBMITTED BY JANUS CONTAIN INFORMATION OF A PROPRIETARY NATURE AND MAY NOT BE REPRODUCED OR USED TO MANUFACTURE ANYTHING IN PART OR IN WHOLE FOR ANY PURPOSE OTHER THAN THAT WHICH IS NECESSARY FOR PREPARATION OF BIDS OF ENGINEERING WITHOUT THE EXPRESS PERMISSION OF JANUS WHICH MAY RECALL DOCUMENTS AT ANY TIME.

UNLESS OTHERWISE SPECIFIED DIMENSIONS ARE IN INCHES AND TOLERANCES ARE:

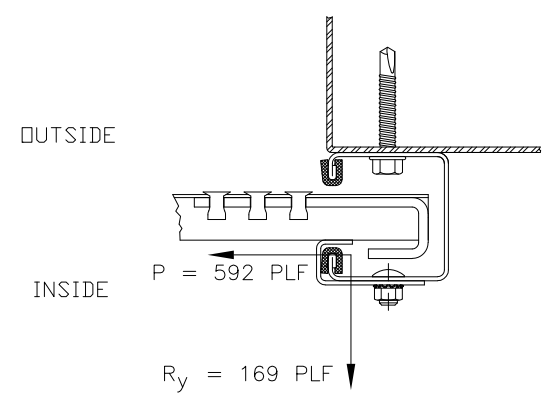
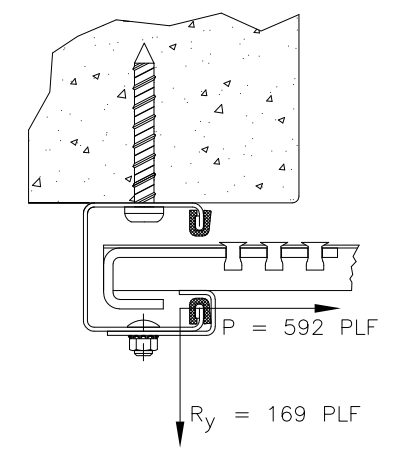
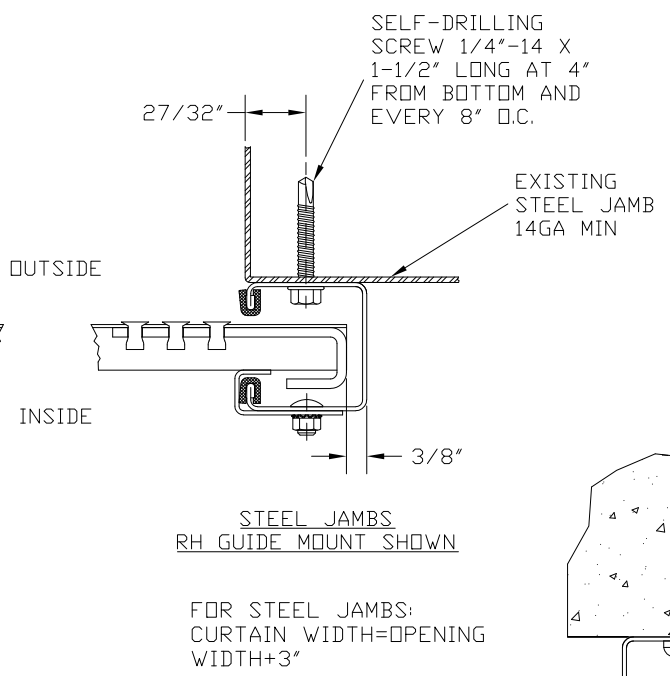
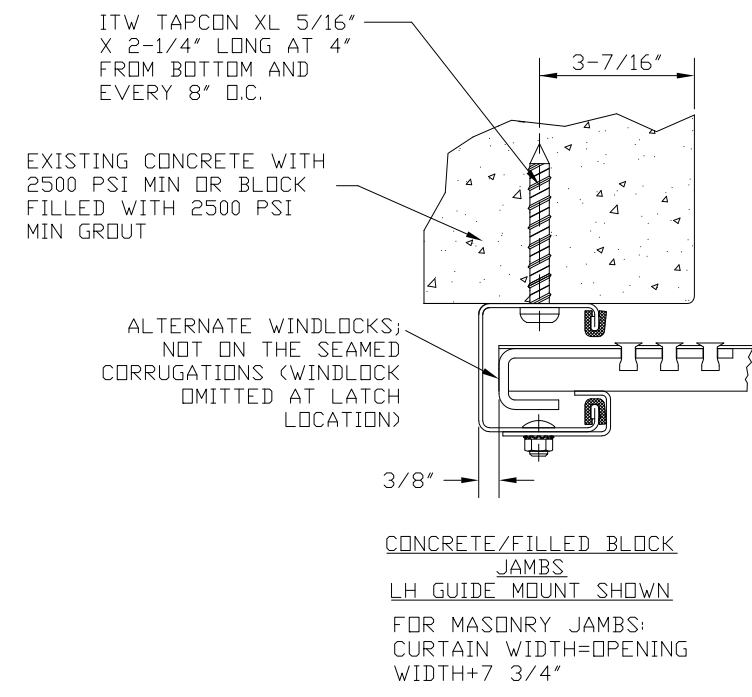
DECIMAL	FRACTIONS	ANGLES	HOLE DIAMETERS
.XX ±.03	+ 1/16	+ 0° 30'	UNDER 0.251 +.004 -.003
.XXX ±.005			0.251 to 0.500 +.006 -.003
			OVER 0.500 +.008 -.003

PART NUMBER:	
MATERIAL:	
APPLIED FINISH:	
UNIT OF MEASURE:	
APPROVALS	DATE
DRAWN: BOBBY ABERCROMBIE	10-5-22
CHECKED: CURT SCHROEDER	10-5-22
APPROVED: CURT SCHROEDER	10-5-22

JANUS INTERNATIONAL GROUP, LLC.
 135 JANUS INTERNATIONAL BLVD. TEMPLE, GA 30179-4435
 770-562-2850/Fax
 770-562-2264
 © 2022 Janus International Group, LLC. All Rights Reserved

26 GA SERIES 690 DOOR ASSEMBLY
 MAX SIZE: 10'-0" X 12'-0"

SIZE	DRAWING NUMBER:	REV:
B	T2000	-
SCALE:	NONE	SHEET: 1 OF: 2



CONCRETE/FILLED BLOCK JAMBS LH GUIDE MOUNT SHOWN
 STEEL JAMBS RH GUIDE MOUNT SHOWN
 SUPERIMPOSED LOAD DIAGRAM

ALLOWABLE TRANSVERSE DESIGN WIND LOADS		
MAX OPENING WIDTH	DESIGN LOAD POSITIVE (PSF)	DESIGN LOAD NEGATIVE (PSF)
4'-0"	+64.2	-75.0
5'-0"	+55.0	-64.2
6'-0"	+46.2	-53.9
7'-0"	+39.8	-46.5
8'-0"	+34.9	-40.8
9'-0"	+31.2	-36.4
10'-0"	+28.2	-32.9

GENERAL NOTES:

1. THIS DOOR EVALUATED IN ACCORDANCE WITH TEST METHODS ASTM E330-02 AND ANSI/DASMA 108.
2. THIS PRODUCT EVALUATION IS GENERIC. IT DOES NOT INCLUDE INFORMATION PREPARED FOR A SPECIFIC SITE.
3. IT IS THE RESPONSIBILITY OF OTHER, TO VERIFY THE STRUCTURAL CAPACITY OF THE SUBSTRATE (JAMB) TO RESIST THE LOADS IMPOSED BY THE ROLL-UP DOOR.
4. ALL DOOR JAMBS (MASONRY OR STEEL) MUST BE DESIGNED TO RESIST THE FORCES IN SUPERIMPOSED LOAD DIAGRAM.
5. THE DOOR ASSEMBLY SHALL BE INSTALLED IN ACCORDANCE WITH THE MANUFACTURERS INSTALLATION INSTRUCTIONS.
6. COMPLIES WITH IBC/IRC 2018.
7. PROFESSIONAL ENGINEER'S SEAL PROVIDED ONLY FOR VERIFICATION OF WINDLOAD CONSTRUCTION DETAIL

THESE CONFIDENTIAL DOCUMENTS SUBMITTED BY JANUS CONTAIN INFORMATION OF A PROPRIETARY NATURE AND MAY NOT BE REPRODUCED OR USED TO MANUFACTURE ANYTHING IN PART OR IN WHOLE FOR ANY PURPOSE OTHER THAN THAT WHICH IS NECESSARY FOR PREPARATION OF BIDS OF ENGINEERING WITHOUT THE EXPRESS PERMISSION OF JANUS WHICH MAY RECALL DOCUMENTS AT ANY TIME.

UNLESS OTHERWISE SPECIFIED DIMENSIONS ARE IN INCHES AND TOLERANCES ARE:

DECIMAL	FRACTIONS	ANGLES	HOLE DIAMETERS
.XX ±.03	± 1/16	± 0° 30'	UNDER 0.251
.XXX ±.005			0.251 to 0.500
			OVER 0.500

PART NUMBER:	
MATERIAL:	
APPLIED FINISH:	
UNIT OF MEASURE:	
APPROVALS	DATE
DRAWN:	10-5-22
CHECKED:	10-5-22
APPROVED:	10-5-22

JANUS INTERNATIONAL GROUP, LLC.
 135 JANUS INTERNATIONAL BLVD. TEMPLE, GA 30179-4435
 770-562-2850/Fax
 770-562-2264
 © 2022 Janus International Group, LLC. All Rights Reserved

26 GA SERIES 690 DOOR ASSEMBLY
 MAX SIZE: 10'-0" X 12'-0"

SIZE	DRAWING NUMBER:	REV:
B	T2000	—
SCALE:	SHEET:	OF:
NONE	2	2