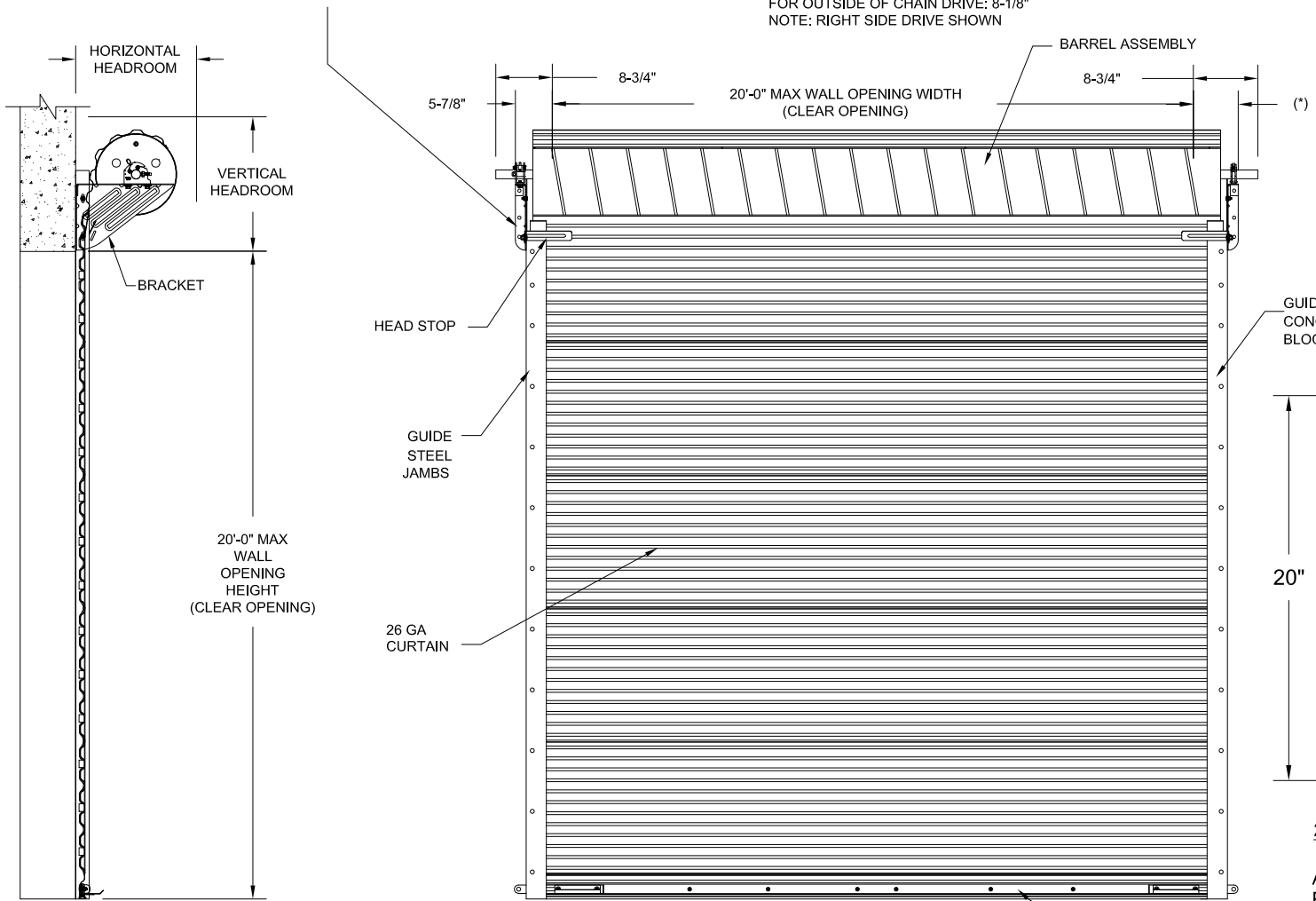
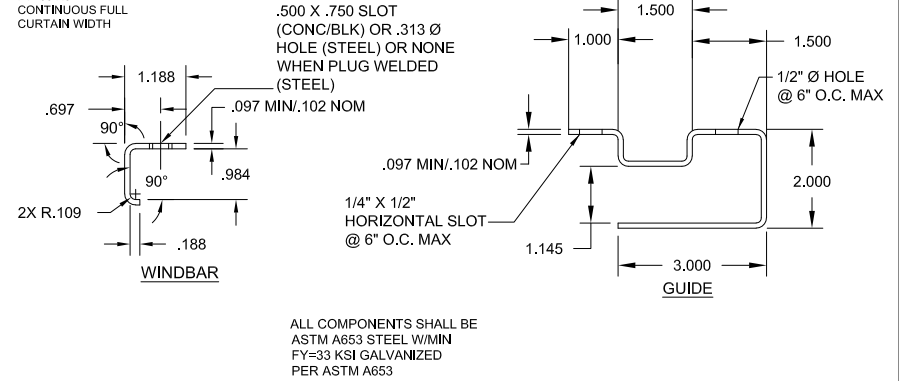
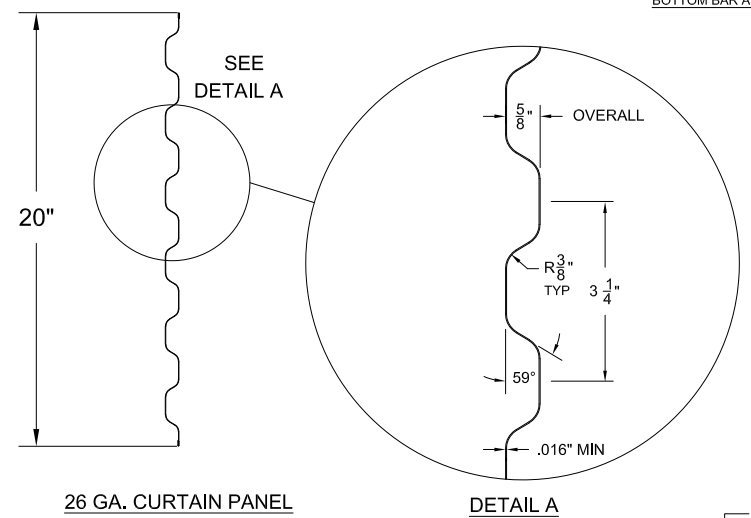
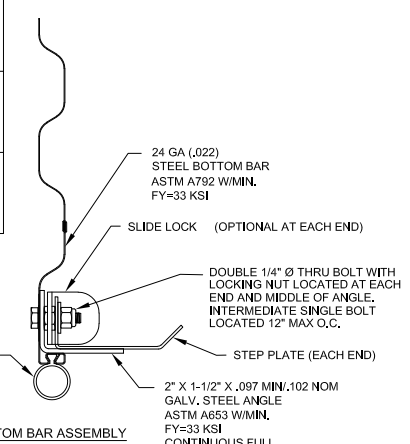


BRACKET ATTACHMENT
 CONCRETE/FILLED BLOCK: DEWALT SCREW-BOLT+, 3/8 X 1-3/4" LONG
 WOOD: LAG BOLT, 3/8 X 3" LONG
 STEEL: HEX BOLT, GR.5, 3/8-16 X 1-1/4" LONG



(*) FOR PUSH-UP OPERATION: 5-7/8"
 FOR HAND CHAIN OPERATION: 6-5/8"
 FOR ELECTRIC OPERATION: 7-3/8"
 FOR OUTSIDE OF CHAIN DRIVE: 8-1/8"
 NOTE: RIGHT SIDE DRIVE SHOWN

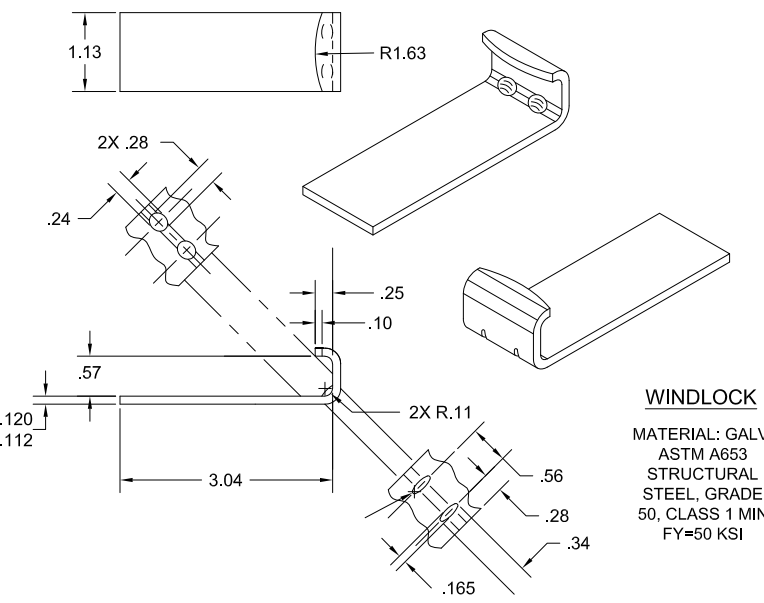
| 3100 HEADROOM REQUIRED | | | 1850 HEADROOM REQUIRED | | |
|-------------------------|-------------------|---------------------|-------------------------|-------------------|---------------------|
| OPENING HEIGHT | VERTICAL HEADROOM | HORIZONTAL HEADROOM | OPENING HEIGHT | VERTICAL HEADROOM | HORIZONTAL HEADROOM |
| THRU 8'-0" | 20" | 20" | THRU 8'-0" | 19" | 19" |
| OVER 8'-0" THRU 10'-0" | 21" | 21" | OVER 8'-0" THRU 10'-0" | 20" | 20" |
| OVER 10'-0" THRU 14'-0" | 21-1/2" | 21" | OVER 10'-0" THRU 14'-0" | 20-1/2" | 20" |
| OVER 14'-0" THRU 20'-0" | 22" | 22" | | | |



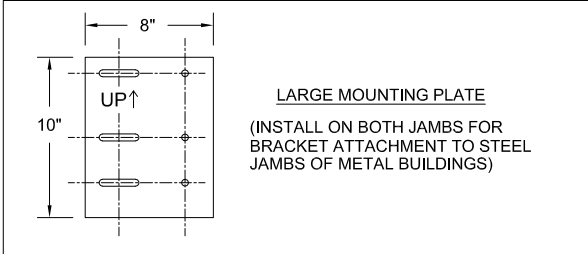
ALL COMPONENTS SHALL BE
 ASTM A653 STEEL W/MIN
 FY=33 KSI GALVANIZED
 PER ASTM A653

John E. Scates, P.E.
 2560 King Arthur Blvd, Ste 124-54
 Lewisville, TX 75056
 FL PE 51737_TX PE 56308/F2203

| REVISIONS | | | |
|-----------|--------------------------------------|----------|----------|
| REV | DESCRIPTION | DATE | APPROVAL |
| - | DRAWING RELEASE | 1-31-03 | DM |
| A | GUIDE ATTACH AT TOE | 11-13-03 | DM |
| B | ADD GUIDE OPTION 3 | 4-13-04 | DM |
| C | NOTE REVISION | 6-17-09 | CS |
| D | ADDED "T" BRACKET OPTION | 1-20-12 | CS |
| E | ADDED CHARTED PSF VALUES | 2-28-14 | CS |
| F | JS CHARTED VALUE REVISION | 10-12-20 | CS |
| G | WOOD JAMBS ADDED | 10-15-21 | CS |
| H | ADD IBC/IRC 2018 COMPLIANCE TO NOTES | 11-11-21 | BA |
| I | 14 GA STEEL JAMBS / 6" OC FASTENERS | 8-1-22 | BA |



WINDLOCK
 MATERIAL: GALV.
 ASTM A653
 STRUCTURAL
 STEEL, GRADE
 50, CLASS 1 MIN
 FY=50 KSI



LARGE MOUNTING PLATE
 (INSTALL ON BOTH JAMBS FOR
 BRACKET ATTACHMENT TO STEEL
 JAMBS OF METAL BUILDINGS)

Professional Engineer's seal provided only for
 verification of windload construction details.
 Printed copies of this document are not considered signed
 and sealed and the signature must be verified on any
 electronic copies.

THESE CONFIDENTIAL DOCUMENTS SUBMITTED BY JANUS CONTAIN INFORMATION OF A PROPRIETARY NATURE AND MAY NOT BE REPRODUCED OR USED TO MANUFACTURE ANYTHING IN PART OR IN WHOLE FOR ANY PURPOSE OTHER THAN THAT WHICH IS NECESSARY FOR PREPARATION OF BIDS OF ENGINEERING WITHOUT THE EXPRESS PERMISSION OF JANUS WHICH MAY RECALL DOCUMENTS AT ANY TIME.

UNLESS OTHERWISE SPECIFIED DIMENSIONS ARE IN INCHES. TOLERANCES LISTED BELOW.

| DECIMAL | FRACTIONS | ANGLES | HOLE DIAMETERS |
|---------|-----------|----------|----------------|
| X.XX | +/-0.030" | +/-1/16" | +/- 0° 30' |
| X.XXX | +/-0.005" | | |
| | | | UNDER 0.251 |
| | | | 0.251 - 0.500 |
| | | | OVER 0.500 |

| | |
|------------------------|---------|
| PART NUMBER: | |
| MATERIAL: | |
| APPLIED FINISH: | |
| UNIT OF MEASURE: | |
| APPROVALS | DATE |
| DRAWN: BECKY NELSON | 1-31-03 |
| CHECKED: DON MILLS | 1-31-03 |
| APPROVED: DON MILLS | 1-31-03 |

JANUS INTERNATIONAL CORPORATION
 135 JANUS INTERNATIONAL BLVD TEMPLE, GA 30179
 770-562-2850/Fax 770-562-2264
 © 2022 Janus International Corporation All Rights Reserved

CERTIFIED WIND LOAD RATED
 26 GA SERIES 3100/1850 DOOR ASSEMBLY
 MAX. SIZE 20'-0" X 20'-0"

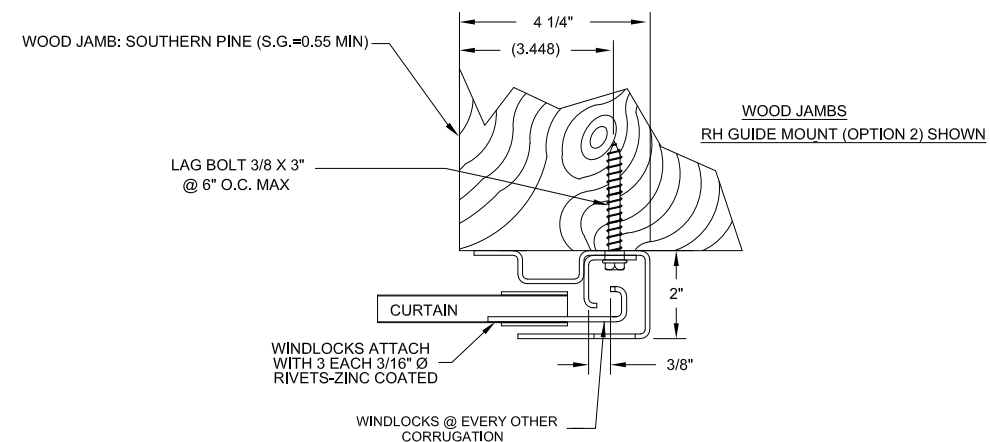
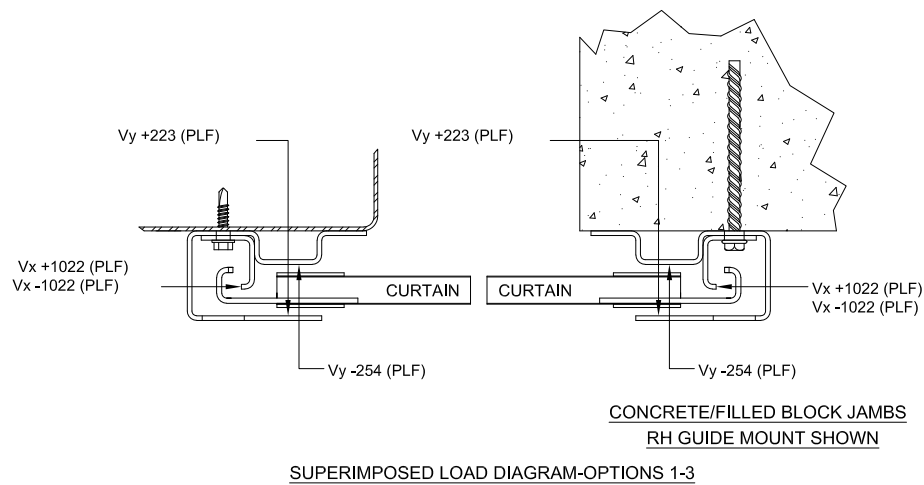
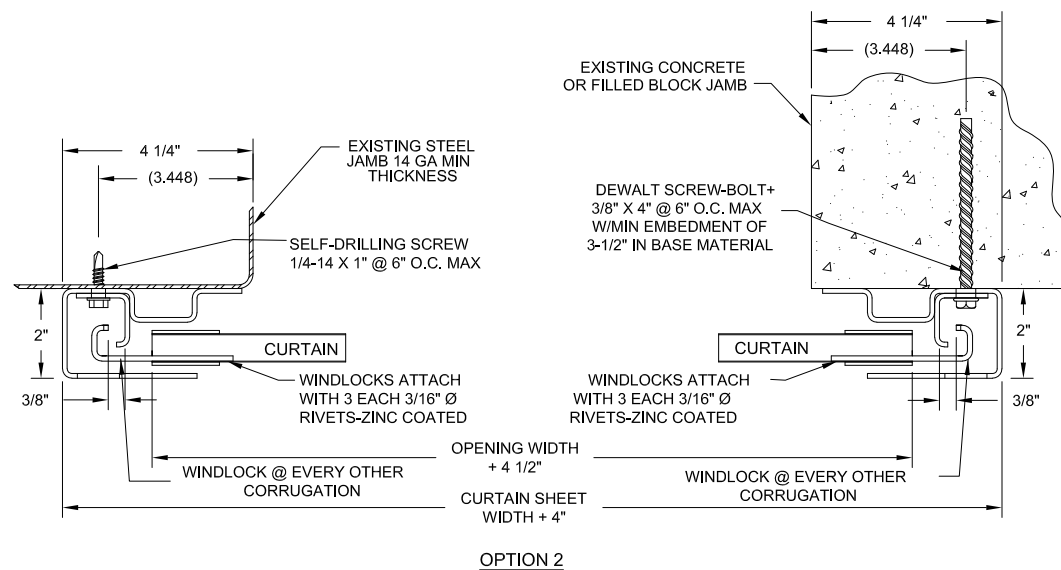
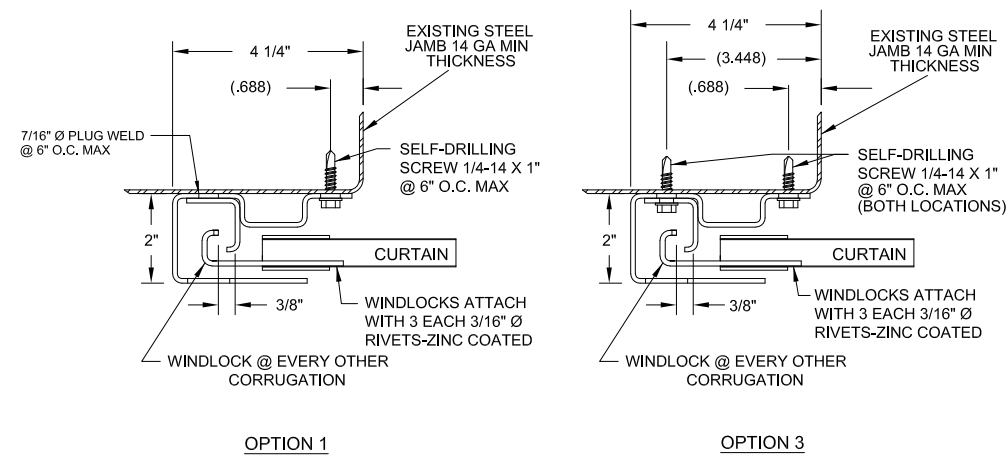
| | | |
|------------------|---------------------------------|------------------|
| SIZE B | DRAWING NUMBER: T1004 | REV: I |
| SCALE: NONE | SHEET: 1 | OF: 2 |

SEE SHEET 2 FOR NOTES

ALLOWABLE TRANSVERSE DESIGN WIND LOADS (PSF)

| MAX DOOR WIDTH | DESIGN LOAD POSITIVE (PSF) | DESIGN LOAD NEGATIVE (PSF) |
|----------------|----------------------------|----------------------------|
| 8'-0" | 42.1 | 48.2 |
| 9'-0" | 37.6 | 43.1 |
| 10'-0" | 34.0 | 38.9 |
| 11'-0" | 31.0 | 35.5 |
| 12'-0" | 28.5 | 32.6 |
| 13'-0" | 26.4 | 30.2 |
| 14'-0" | 24.5 | 28.1 |
| 15'-0" | 22.9 | 26.3 |
| 16'-0" | 21.6 | 24.7 |
| 17'-0" | 19.5 | 22.3 |
| 18'-0" | 17.7 | 20.3 |
| 19'-0" | 16.2 | 18.6 |
| 20'-0" | 14.9 | 17.1 |

STEEL JAMBS - LH GUIDE MOUNT SHOWN



GENERAL NOTES:

- TESTING:
 - TESTED PER DASMA 108 (STATIC).
- DESIGN WINDLOAD REQUIREMENTS FOR BUILDING OPENINGS SHALL BE DETERMINED BY OTHERS.
- SUPERIMPOSED LOADS ON THE JAMBS FROM THIS DOOR ARE DESIGNATED AS Vx and Vy HEREIN. OTHERS SHALL VERIFY ADEQUACY OF BUILDING STRUCTURE TO RESIST SUPERIMPOSED LOADS Vx, Vy.
- ALL WELDING SHALL BE PERFORMED BY QUALIFIED WELDERS IN ACCORDANCE WITH A.W.S. SPECIFICATIONS. WELDING ELECTRODES SHALL CONFORM TO A.W.S. A5.1 GRADE E-70
- DOORS SHALL BE PROVIDED WITH LOCK MECHANISMS AT THE OPTION OF THE OWNER
- ALL BOLTS AND WASHERS SHALL BE GALVANIZED OR STAINLESS STEEL WITH A MINIMUM TENSILE STRENGTH OF 60 KSI.
- ANCHOR NOTES:
 - EMBEDMENT LENGTH DOES NOT INCLUDE STUCCO FINISH.
 - FOR HOLLOW BLOCK, FILL ALL CELLS @ANCHOR WITH 2000 PSI GROUT.
 - CONCRETE TO BE 2500 PSI MIN.
 - ANCHORS SHALL BE INSTALLED IN ACCORDANCE WITH MANUFACTURER'S SPECIFICATIONS
 - APPROVED CONCRETE AND FILLED-CMU ANCHORS:
 - 3/8" DEWALT SCREW-BOLT+
 - 3/8" SIMPSON TITEN HD.
- DOOR OPERATION TYPE MAY BE PUSH-UP, HAND CHAIN, OR ELECTRIC.
- GUIDE-TO-JAMB ATTACHMENT FASTENERS BEGIN 4" FROM FLOOR AND END 4" BELOW THE TOP OF WALL OPENING.
- COMPLIES WITH THE WINDLOAD REQUIREMENTS OF IBC/IRC 2018

THESE CONFIDENTIAL DOCUMENTS SUBMITTED BY JANUS CONTAIN INFORMATION OF A PROPRIETARY NATURE AND MAY NOT BE REPRODUCED OR USED TO MANUFACTURE ANYTHING IN PART OR IN WHOLE FOR ANY PURPOSE OTHER THAN THAT WHICH IS NECESSARY FOR PREPARATION OF BIDS OF ENGINEERING WITHOUT THE EXPRESS PERMISSION OF JANUS WHICH MAY RECALL DOCUMENTS AT ANY TIME.

UNLESS OTHERWISE SPECIFIED DIMENSIONS ARE IN INCHES. TOLERANCES LISTED BELOW.

| DECIMAL | FRACTIONS | ANGLES | HOLE DIAMETERS |
|---------|-----------|----------|----------------|
| X.XX | +/-0.030" | +/-1/16" | +/- 0° 30' |
| X.XXX | +/-0.005" | | |
| | | | UNDER 0.251 |
| | | | 0.251 - 0.500 |
| | | | OVER 0.500 |

| | |
|------------------------|---------|
| PART NUMBER: | |
| MATERIAL: | |
| APPLIED FINISH: | |
| UNIT OF MEASURE: | |
| APPROVALS | DATE |
| DRAWN: BECKY NELSON | 1-31-03 |
| CHECKED: DON MILLS | 1-31-03 |
| APPROVED: DON MILLS | 1-31-03 |

JANUS INTERNATIONAL CORPORATION
 135 JANUS INTERNATIONAL BLVD TEMPLE, GA 30179
 770-562-2850/Fax 770-562-2264
 © 2022 Janus International Corporation All Rights Reserved

CERTIFIED WIND LOAD RATED
 26 GA SERIES 3100/1850 DOOR ASSEMBLY
 MAX. SIZE 20'-0" X 20'-0"

SIZE **B** DRAWING NUMBER: **T1004** REV: **I**

SCALE: NONE SHEET: 2 OF: 2