

ULTRATEK WORLDWIDE

CLEARTEK STORM PANEL SYSTEM

(HVHZ) (IMPACT)

ULTRATEK
WORLDWIDE

3801 N. WASHINGTON BLVD
SARASOTA, FLORIDA 34234
PH: (941) 351-6700

TITLE: CLEARTEK STORM PANEL SYSTEM
(HVHZ) (IMPACT)
INSTALLATION &
GENERAL NOTES

PREPARED BY:
BUILDING DROPS, INC.
398 E. DANIA BEACH BLVD., STE. 338
DANIA BEACH, FL 33004
PH: (954)399-8478
FAX: (954)744-4738
WEB: www.buildingdrops.com



INSTALLATION NOTES:

- ONE (1) INSTALLATION ANCHOR IS REQUIRED AT EACH ANCHOR LOCATION SHOWN.
- THE NUMBER OF INSTALLATION ANCHORS DEPICTED IS THE MINIMUM NUMBER OF ANCHORS TO BE USED FOR PRODUCT INSTALLATION OF THE MAXIMUM SIZE LISTED.
- INSTALL INDIVIDUAL INSTALLATION ANCHORS WITHIN A TOLERANCE OF ±1/2 INCH (I.E., WITHOUT CONSIDERATION OF TOLERANCES). TOLERANCES ARE NOT CUMULATIVE FROM ONE INSTALLATION ANCHOR TO THE NEXT.
- FOR INSTALLATION INTO WOOD FRAMING AND CONCRETE/MASONRY, SEE TABLE ON SHEET 3 & 4 FOR ANCHOR OPTIONS.
- FOR MINIMUM REQUIRED SEPARATION, SEE DESIGN PRESSURE TABLE ON SHEET 3 & 4.
- MINIMUM EMBEDMENT AND EDGE DISTANCE EXCLUDE WALL FINISHES, INCLUDING BUT NOT LIMITED TO STUCCO, FOAM, BRICK VENEER, AND SIDING.
- INSTALLATION ANCHORS AND ASSOCIATED HARDWARE MUST BE MADE OF CORROSION RESISTANT MATERIAL OR HAVE A CORROSION RESISTANT COATING.
- FOR HOLLOW BLOCK AND GROUT FILLED BLOCK, DO NOT INSTALL INSTALLATION ANCHORS INTO MORTAR JOINTS. EDGE DISTANCE IS MEASURED FROM FREE EDGE OF BLOCK OR EDGE OF MORTAR JOINT INTO FACE SHELL OF BLOCK.
- INSTALLATION ANCHORS SHALL BE INSTALLED IN ACCORDANCE WITH ANCHOR MANUFACTURER'S INSTALLATION INSTRUCTIONS, AND ANCHORS SHALL NOT BE USED IN SUBSTRATES WITH STRENGTHS LESS THAN THE MINIMUM STRENGTH SPECIFIED BY THE ANCHOR MANUFACTURER.
- INSTALLATION ANCHOR CAPACITIES FOR PRODUCTS HEREIN ARE BASED ON SUBSTRATE MATERIALS WITH THE FOLLOWING PROPERTIES:
 - WOOD - MINIMUM SPECIFIC GRAVITY OF 0.55.
 - CONCRETE -MINIMUM COMPRESSIVE STRENGTH OF 3000 PSI.
 - GROUT-FILLED CMU- UNIT STRENGTH CONFORMS TO ASTM C-90 WITH MINIMUM COMPRESSIVE STRENGTH OF 2000 PSI AND GROUT CONFORMS TO ASTM C 476, MINIMUM GROUT COMPRESSIVE STRENGTH OF 2000 PSI.
 - HOLLOW BLOCK CMU - UNIT STRENGTH CONFORMS TO ASTM C-90 WITH MINIMUM COMPRESSIVE STRENGTH OF 2000 PSI.

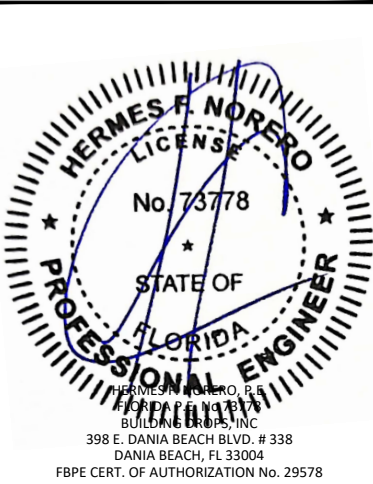
GENERAL NOTES:

- THE PRODUCT SHOWN HEREIN IS DESIGNED AND MANUFACTURED TO COMPLY WITH THE CURRENT FLORIDA BUILDING CODE (FBC), INCLUDING HVHZ AND HAS BEEN EVALUATED ACCORDING TO THE FOLLOWING:
 - TAS 201-94
 - TAS 202-94
 - TAS 203-94
 - ASTM E330-14
 - ASTM E1886-13
 - ASTM E1996-14
- ADEQUACY OF THE EXISTING STRUCTURAL CONCRETE/MASONRY AND 2X FRAMING AS A MAIN WIND FORCE RESISTING SYSTEM CAPABLE OF WITHSTANDING AND TRANSFERRING APPLIED PRODUCT LOADS TO THE FOUNDATION IS THE RESPONSIBILITY OF THE ENGINEER OR ARCHITECT OF RECORD FOR THE PROJECT OF INSTALLATION.
- 1X AND 2X BUCKS (WHEN USED) SHALL BE DESIGNED AND ANCHORED TO PROPERLY TRANSFER ALL LOADS TO THE STRUCTURE. BUCK DESIGN AND INSTALLATION IS THE RESPONSIBILITY OF THE ENGINEER OR ARCHITECT OF RECORD FOR THE PROJECT OF INSTALLATION.
- THE INSTALLATION DETAILS DESCRIBED HEREIN ARE GENERIC AND MAY NOT REFLECT ACTUAL CONDITIONS FOR A SPECIFIC SITE. IF SITE CONDITIONS CAUSE INSTALLATION TO DEVIATE FROM THE REQUIREMENTS DETAILED HEREIN, A LICENSED ENGINEER OR ARCHITECT SHALL PREPARE SITE SPECIFIC DOCUMENTS FOR USE WITH THIS DOCUMENT.
- THIS IMPACT PROTECTIVE SYSTEM **IS APPROVED** IN AREAS REQUIRING IMPACT RESISTANCE.
- PANEL MATERIAL: GE LEXAN 103/ BAYER MAKROLON 3103/ POLYONE-SUNGUARD

TABLE OF CONTENTS	
SHEET	SHEET DESCRIPTION
1	INSTALLATION & GENERAL NOTES
2	ELEVATIONS & ANCHOR LAYOUT
3	CORRUGATED PANEL DESIGN PRESSURE TABLE & ANCHOR SCHEDULE
4	FLAT PANEL DESIGN PRESSURE TABLE & ANCHOR SCHEDULE
5	CORRUGATED PANEL VERTICAL SECTIONS
6	CORRUGATED PANEL VERTICAL SECTIONS
7	FLAT PANEL VERTICAL SECTIONS & DETAILS
8	INSTALLATION DETAILS
9	INSTALLATION DETAILS
10	CORRUGATED PANEL HORIZONTAL SECTIONS
11	ALTERNATE EXTRUSION
12	COMPONENTS

REMARKS	BY	DATE

THE INSTALLATION DETAILS DESCRIBED HEREIN ARE GENERIC AND MAY NOT REFLECT ACTUAL CONDITIONS FOR A SPECIFIC SITE. IF SITE CONDITIONS CAUSE INSTALLATION TO DEVIATE FROM THE REQUIREMENTS DETAILED HEREIN, A LICENSED ENGINEER OR ARCHITECT SHALL PREPARE SITE SPECIFIC DOCUMENTS FOR USE WITH THIS DOCUMENT.



HERMES F. NORERO, P.E.
BUILDING DROPS, INC.
398 E. DANIA BEACH BLVD. # 338
DANIA BEACH, FL 33004
FBPE CERT. OF AUTHORIZATION No. 29578

FL #: **FL17733**

DATE: **06.26.23**

DWG. BY: **MG** | CHK. BY: **HFN**

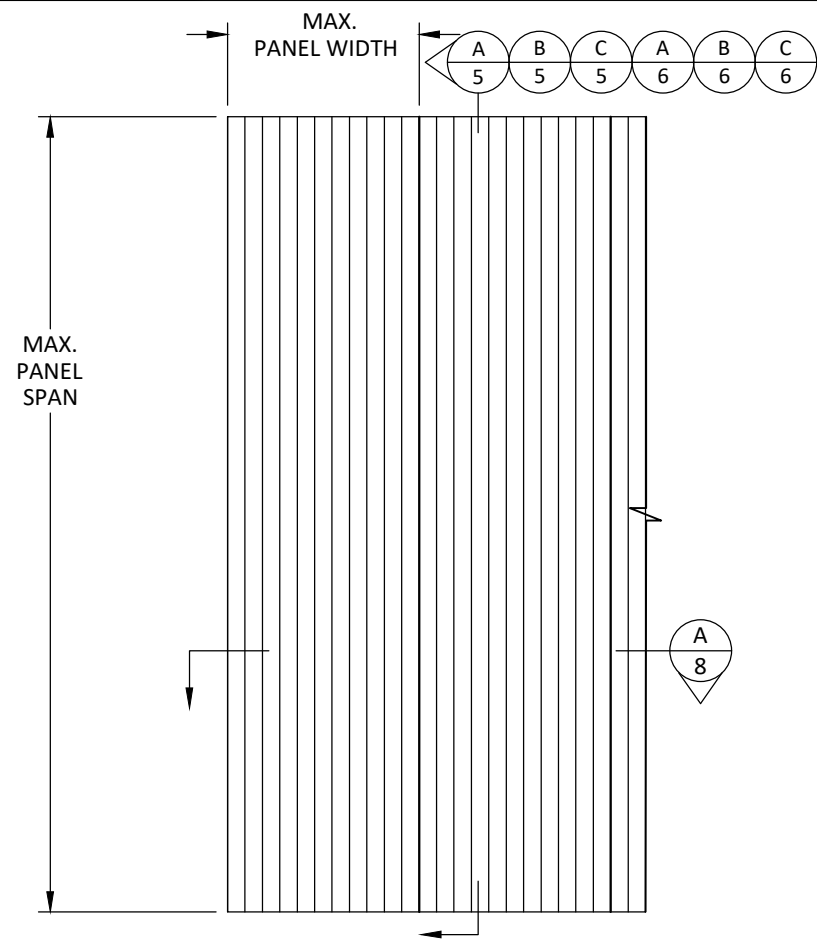
SCALE: **NTS**

DWG. #: **UTW001**

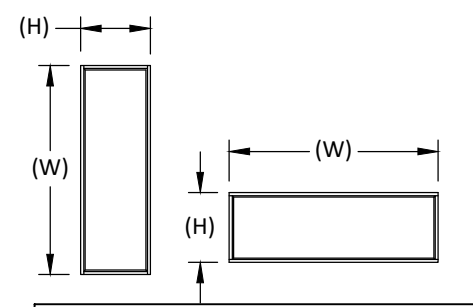
SHEET: **1**
OF 12

8/16/2023 6:54 PM
z:\projects\ultratek worldwide\fb-23-0277.2 - fbc submittal - cleartek invisible\dwg\utw001.dwg

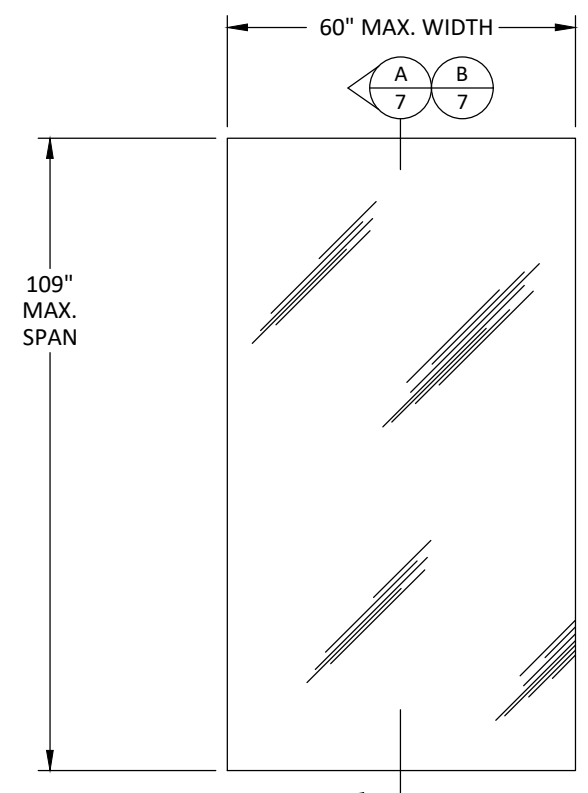
z:\projects\ultratek worldwide\lbc-23-0277.2 - lbc submittal - cleartek\dwg\utw001.dwg 8/16/2023 6:54 PM



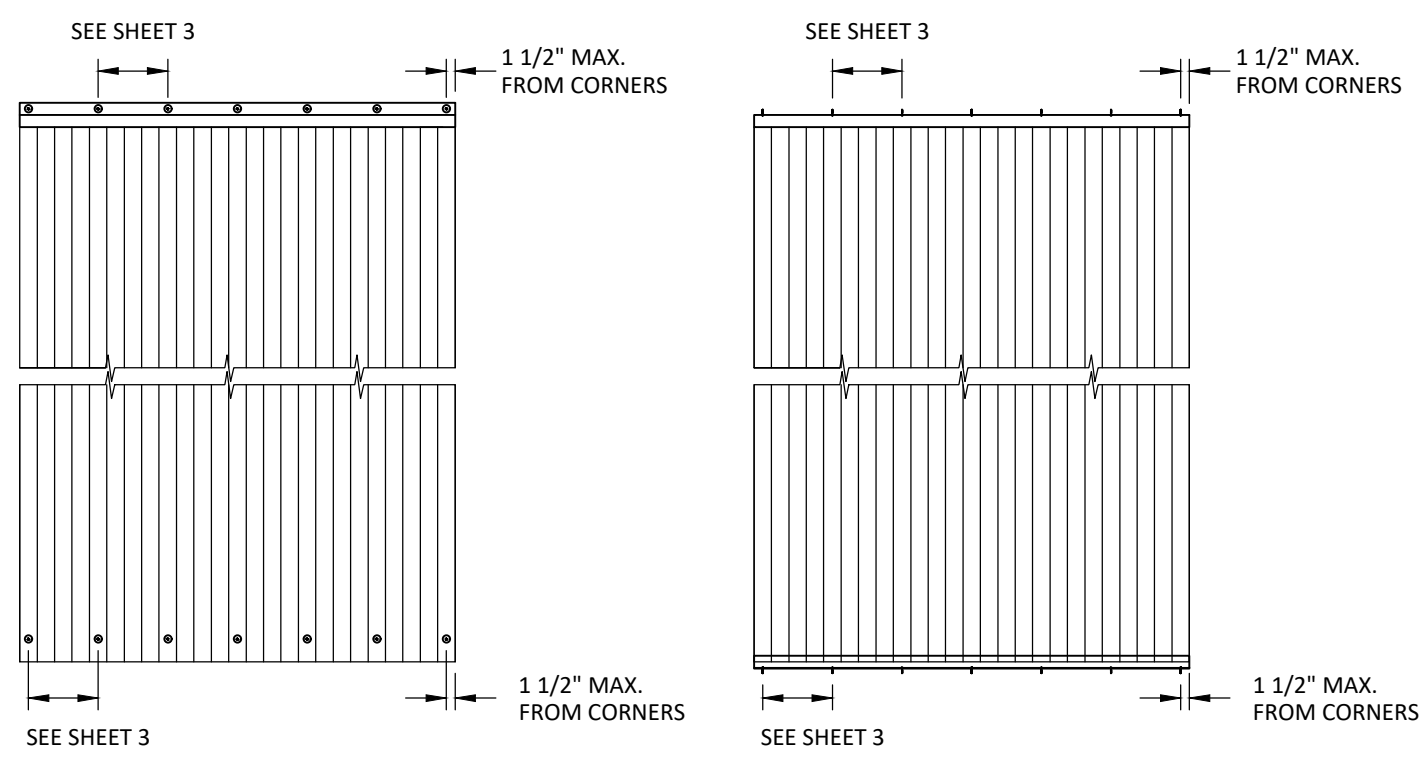
**CORRUGATED PANEL
TYPICAL ELEVATION**



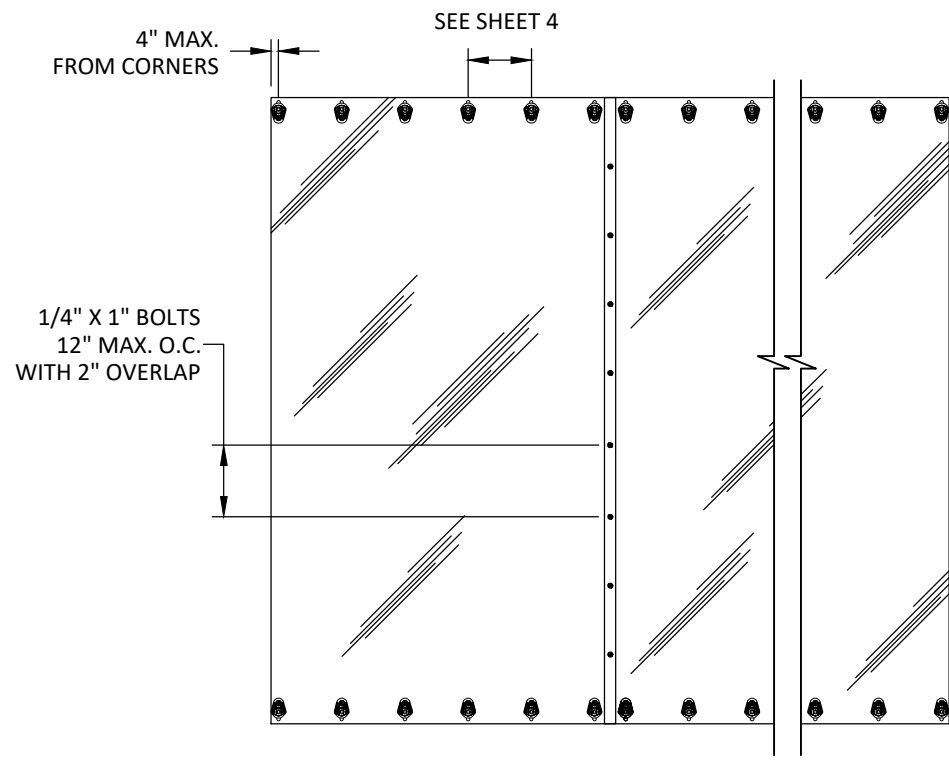
NOTE:
DIMENSION 'A' AND DIMENSION 'B' MAY
BE INTERCHANGEABLE AS WIDTH (W) OR
HEIGHT (H) OF PANEL.



**FLAT PANEL TYPICAL
ELEVATION**



**ANCHOR LAYOUT
HORIZONTAL ANCHOR**



**ULTRATEK
WORLDWIDE**

3801 N. WASHINGTON BLVD
SARASOTA, FLORIDA 34234
PH: (941) 351-6700

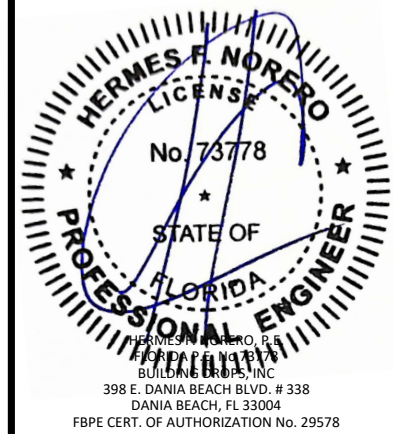
TITLE: **CLEARTEK STORM PANEL SYSTEM
(HVHZ) (IMPACT)
ELEVATIONS &
ANCHOR LAYOUT**

PREPARED BY:
BUILDING DROPS, INC.
398 E. DANIA BEACH BLVD., STE. 338
DANIA BEACH, FL 33004
PH: (954) 399-8478
FAX: (954) 744-4738
WEB: www.buildingdrops.com



REMARKS	BY	DATE

THE INSTALLATION DETAILS DESCRIBED HEREIN ARE GENERIC AND MAY NOT REFLECT ACTUAL CONDITIONS FOR A SPECIFIC SITE. IF SITE CONDITIONS CAUSE INSTALLATION TO DEVIATE FROM THE REQUIREMENTS DETAILED HEREIN, A LICENSED ENGINEER OR ARCHITECT SHALL PERFORM SITE SPECIFIC DOCUMENTS FOR USE WITH THIS DOCUMENT.



398 E. DANIA BEACH BLVD. # 338
DANIA BEACH, FL 33004
FBPE CERT. OF AUTHORIZATION No. 29578

FL #: **FL17733**

DATE: **06.26.23**

DWG. BY: **MG** CHK. BY: **HFN**

SCALE: **NTS**

DWG. #: **UTW001**

SHEET:
2
OF 12

8/16/2023 6:54 PM

CORRUGATED PANEL - ANCHOR SCHEDULE. FASTENER MAXIMUM SPACING (INCHES) REQUIRED FOR VARIOUS DESIGN LOADS AND SPANS. Table with columns for EXIST. STRUC., ANCHOR TYPE, LOAD (W) P.S.F. MAX., MIN. 2" EDGE DISTANCE, and MIN. 3" EDGE DISTANCE.

GLASS SEPARATION SCHEDULE NOTES: 1) GLASS SEPARATION SCHEDULE PROVIDES MINIMUM SEPARATION DISTANCE BETWEEN EXTERIOR FACE OF GLAZING (OR OTHER PRODUCT BEING PROTECTED) AND INTERIOR FACE OF INSTALLED STORM PANEL.

CORRUGATED PANEL TABLE 2 - REQUIRED SEPARATION FROM GLASS. Table with columns for POSITIVE DESIGN LOAD (W) (PSF), ACTUAL STORM PANEL SPAN (L) (FEET), and MINIMUM SEPARATION FOR INSTALLATIONS (INCHES).

CORRUGATED PANEL TABLE 1 - MAXIMUM ALLOWABLE STORM SPAN SCHEDULE. Table with columns for POS/NEG DESIGN LOAD (PSF) and L MAX (FT-IN).

CORRUGATED PANEL - ANCHOR SCHEDULE. FASTENER MAXIMUM SPACING (INCHES) REQUIRED FOR VARIOUS DESIGN LOADS AND SPANS. Table with columns for EXIST. STRUC., ANCHOR TYPE, LOAD (W) P.S.F. MAX., MIN. 3/4" EDGE DISTANCE, and MIN. 3" EDGE DISTANCE.

ANCHOR NOTES: 1. SPANS AND LOADS SHOWN HERE ARE FOR DETERMINING ANCHOR SPACING ONLY. ALLOWABLE STORM PANEL SPANS FOR SPECIFIC LOADS MUST BE LIMITED TO THOSE SHOWN IN TABLE 1, SHEET 3 OR TABLE 3, SHEET 4.



3801 N. WASHINGTON BLVD SARASOTA, FLORIDA 34234 PH: (941) 351-6700

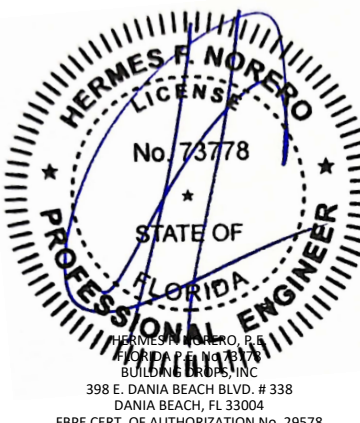
TITLE: CLEARTEK STORM PANEL SYSTEM (HVHZ) (IMPACT) CORRUGATED PANEL DESIGN PRESSURE TABLE & ANCHOR SCHEDULE

PREPARED BY: BUILDING DROPS, INC. 398 E. DANIA BEACH BLVD., STE. 338 DANIA BEACH, FL 33004 PH: (954)399-8478 FAX: (954)744-4738 WEB: www.buildingdrops.com



REMARKS, BY, DATE table with empty rows for notes.

THE INSTALLATION DETAILS DESCRIBED HEREIN ARE GENERIC AND MAY NOT REFLECT ACTUAL CONDITIONS FOR A SPECIFIC SITE. IF SITE CONDITIONS CAUSE INSTALLATION TO DEVIATE FROM THE REQUIREMENTS DETAILED HEREIN, A LICENSED ENGINEER OR ARCHITECT SHALL PERFORM SITE SPECIFIC DOCUMENTS FOR USE WITH THIS DOCUMENT.



FL #: FL17733 DATE: 06.26.23 DWG. BY: MG CHK. BY: HFN SCALE: NTS DWG. #: UTW001 SHEET: 3 OF 12

z:\projects\ultratek worldwide\lbc-23-02772 - lbc submittal - cleartek invisishield (revision)\dwg\utw001.dwg

8/16/2023 6:54 PM

FLAT PANEL - ANCHOR SCHEDULE																							
FASTENER MAXIMUM SPACING (INCHES) REQUIRED FOR VARIOUS DESIGN LOADS AND SPANS																							
EXIST. STRUC.	ANCHOR TYPE	LOAD (W) P.S.F. MAX. (SEE NOTE 1)	MIN. 2" EDGE DISTANCE								MIN. 3" EDGE DISTANCE												
			SPANS UP TO 3'		SPANS UP TO 6'-8"		SPANS UP TO 7'-8"		SPANS UP TO 9'-1"		SPANS UP TO 3'		SPANS UP TO 6'-8"		SPANS UP TO 7'-8"		SPANS UP TO 9'-1"						
			(SEE NOTE 1)		(SEE NOTE 1)		(SEE NOTE 1)		(SEE NOTE 1)		(SEE NOTE 1)		(SEE NOTE 1)		(SEE NOTE 1)		(SEE NOTE 1)						
			CONNECTION TYPE	C1	C2	C3	C1	C2	C3	C1	C2	C3	C1	C2	C3	C1	C2	C3					
CONCRETE	1/4" Ø ITW TAPCON WITH 1-3/4" MIN. EMBEDMENT (MIN. 3,192 PSI CONCRETE)	30	12	12	12	12	12	12	12	12	10	12	12	8	12	12	12	12	12	12	12	10	
		40	12	12	12	12	12	9	12	10	7	12	9	6	12	12	12	12	12	11	12	12	9
		50	12	12	12	12	10	7	12	8	6	12	7	5	12	12	12	12	12	8	12	11	7
		60	12	12	12	12	8	6	12	7	5	12	6	4	12	12	12	12	10	7	12	9	6
		70	12	12	11	12	7	5	12	6	4	12	6	4	12	12	12	12	9	6	12	7	5
		70	12	12	12	12	12	8	12	11	7	12	9	6	12	12	12	12	12	11	12	12	9
	1/4" Ø DEWALT MALE/FEMALE PANELMATE W/ 1-3/4" MIN. EMBED. & 1/4-10 MACHINE SCREW WITH NUT (MIN. 3,000 PSI CONCRETE)	30	12	12	12	12	10	6	12	8	5	12	7	4	12	12	12	12	12	8	12	10	7
		40	12	12	11	12	8	5	12	7	4	12	5	3	12	12	12	12	10	6	12	8	5
		50	12	12	9	12	6	4	12	5	3	12	4	3	12	12	12	12	8	5	12	7	4
		60	12	12	8	12	5	3	12	5	3	12	4	3	12	12	12	12	8	5	12	7	4
		70	12	12	8	12	5	3	12	5	3	12	4	3	12	12	12	12	7	4	12	6	4
		70	12	12	8	12	5	3	12	5	3	12	4	3	12	12	12	12	7	4	12	6	4
1/4" Ø ALL POINTS SOLID SET WITH 7/8" MIN. EMBED. & 1/4-20 STAINLESS STEEL MACHINE SCREW (MIN. 2,000 PSI CONCRETE)	30	12	12	12	12	12	11	12	12	9	12	12	8	12	12	12	12	12	12	12	12	10	
	40	12	12	12	12	12	8	12	10	7	12	9	6	12	12	12	12	12	10	12	12	9	
	50	12	12	12	12	9	6	12	8	5	12	7	4	12	12	12	12	12	8	12	11	7	
	60	12	12	12	12	8	5	12	7	4	12	6	4	12	12	12	12	10	7	12	9	6	
	70	12	12	12	12	7	4	12	6	4	12	6	4	12	12	12	12	9	6	12	7	5	
	70	12	12	12	12	7	4	12	6	4	12	6	4	12	12	12	12	9	6	12	7	5	
1/2" Ø X 2-1/8" DEWALT PANELMATE INSERT WITH MIN. 1-1/4" EMBEDMENT & 1/4-20 STAINLESS STEEL MACHINE SCREW (MIN. 2,700 PSI CONCRETE)	30	12	12	12	12	11	8	12	9	7	12	8	6	12	12	12	12	11	8	12	10	7	
	40	12	12	12	12	8	6	12	7	5	12	6	4	12	12	12	12	8	6	12	7	5	
	50	12	12	11	12	6	5	12	5	4	12	5	3	12	12	10	12	7	4	12	6	4	
	60	12	12	9	12	5	4	12	4	3	12	4	3	12	12	8	12	5	4	12	5	3	
	70	12	10	8	12	4	3	12	4	3	12	4	3	12	11	7	12	5	3	12	4	3	
	70	12	10	8	12	4	3	12	4	3	12	4	3	12	11	7	12	5	3	12	4	3	
HOLLOW CONC. BLOCK	1/4" Ø ITW TAPCON WITH 1-1/4" MIN. EMBEDMENT (CONFORMING TO ASTM C-90)	30	12	12	8	12	5	3	12	4	3	11	4	12	12	11	12	7	5	12	6	4	
		40	12	9	6	12	4	10	3	8	3	12	12	8	12	5	3	12	4	3	11	4	
		50	12	7	4	9	3	8	7	7	12	10	6	12	4	3	11	3	9	3	7	7	
		60	12	6	4	8	7	5	12	8	5	10	3	9	3	7	7	7	7	7	7	7	
		70	12	5	3	6	6	5	12	7	4	9	3	7	7	7	7	7	7	7	7	7	
		70	12	5	3	6	6	5	12	7	4	9	3	7	7	7	7	7	7	7	7	7	
	1/4" Ø DEWALT MALE/FEMALE PANELMATE W/ 1-1/4" MIN. EMBED. & 1/4-10 MACHINE SCREW WITH NUT (CONFORMING TO ASTM C-90)	30	12	12	12	12	8	5	12	7	4	12	6	4	12	12	12	12	7	5	12	6	4
		40	12	12	9	12	6	4	12	5	3	12	4	3	12	12	9	12	5	4	12	5	3
		50	12	11	7	12	4	3	12	4	3	11	3	12	10	7	12	4	3	12	4	11	3
		60	12	9	6	12	4	11	3	9	3	12	8	6	12	3	10	3	9	3	9	3	9
		70	12	7	5	11	3	9	3	9	3	12	7	5	10	3	9	3	9	3	9	3	9
		70	12	7	5	11	3	9	3	9	3	12	7	5	10	3	9	3	9	3	9	3	9
1/4" Ø ALL POINTS SOLID SET WITH 7/8" MIN. EMBED. & 1/4-20 STAINLESS STEEL MACHINE SCREW (CONFORMING TO ASTM C-90)	30	12	12	12	12	9	6	12	8	5	12	7	5	12	12	12	12	8	12	10	7	12	
	40	12	12	11	12	7	5	12	6	4	12	5	3	12	12	12	12	9	6	12	7	5	
	50	12	12	9	12	5	4	12	5	3	12	4	3	12	12	11	12	7	5	12	6	4	
	60	12	10	7	12	4	3	12	4	3	12	3	12	3	12	12	9	12	6	4	12	5	3
	70	12	9	6	12	4	12	3	12	3	12	11	7	12	5	3	12	4	3	12	4	3	
	70	12	9	6	12	4	12	3	12	3	12	11	7	12	5	3	12	4	3	12	4	3	
1/2" Ø X 2-1/8" DEWALT PANELMATE INSERT WITH MIN. 1-1/4" EMBEDMENT & 1/4-20 STAINLESS STEEL MACHINE SCREW (MIN. 2,700 PSI CONCRETE)	30	12	12	12	12	11	8	12	9	7	12	8	6	12	12	12	12	11	8	12	10	7	
	40	12	12	12	12	8	6	12	7	5	12	6	4	12	12	12	12	8	6	12	7	5	
	50	12	12	11	12	6	5	12	5	4	12	5	3	12	12	10	12	7	4	12	6	4	
	60	12	12	9	12	5	4	12	4	3	12	4	3	12	12	8	12	5	4	12	5	3	
	70	12	10	8	12	4	3	12	4	3	12	4	3	12	11	7	12	5	3	12	4	3	
	70	12	10	8	12	4	3	12	4	3	12	11	7	12	5	3	12	4	3	12	4	3	

GLASS SEPARATION SCHEDULE NOTES:

- 1) GLASS SEPARATION SCHEDULE PROVIDES MINIMUM SEPARATION DISTANCE BETWEEN EXTERIOR FACE OF GLAZING (OR OTHER PRODUCT BEING PROTECTED) AND INTERIOR FACE OF INSTALLED STORM PANEL.
- 2) SEPARATION DISTANCE PER THIS SCHEDULE IS REQUIRED FOR USE WITH POSITIVE LOADS ONLY.
- 3) SIDE BRACKET IS AN EXTRA BRACKET ADDED HALFWAY ACROSS SPAN ON BOTH SIDES.
- 4) SEPARATION FROM GLAZING IS REQUIRED FOR ALL INSTALLATIONS WITHIN THE HIGH VELOCITY HURRICANE ZONE, WIND ZONE 4 AND ESSENTIAL FACILITIES.
- 5) SEPARATION IN NOT REQUIRED FROM ANY FENESTRATION PRODUCT THAT DOES NOT CONTAIN GLAZING.
- 6) SEPARATION FROM GLAZING IS NOT REQUIRED FOR INSTALLATIONS OUTSIDE OF WIND ZONE 4 AND ESSENTIAL FACILITIES.

FLAT PANEL TABLE 4 - REQUIRED SEPARATION FROM GLASS		
POSITIVE DESIGN LOAD (W) (PSF)	ACTUAL STORM PANEL SPAN (L) (FEET)	MINIMUM SEPARATION FOR INSTALLATIONS (INCHES)
25.0	3.00	2.70
25.0	6.67	2.70
25.0	7.67	2.70
25.0	9.08	2.70
30.0	3.00	2.70
30.0	6.67	2.70
30.0	7.67	2.70
30.0	9.08	2.70
35.0	3.00	2.70
35.0	6.67	2.70
35.0	7.67	2.70
35.0	9.08	2.70
40.0	3.00	2.70
40.0	6.67	2.70
40.0	7.67	2.70
40.0	9.08	2.70
45.0	3.00	2.70
45.0	6.67	2.70
45.0	7.67	2.70
45.0	9.08	2.70
50.0	3.00	2.70
50.0	6.67	2.70
50.0	7.67	2.70
50.0	9.08	2.70
55.0	3.00	2.70
55.0	6.67	2.70
55.0	7.67	2.70
55.0	9.08	2.70
60.0	3.00	2.70
60.0	6.67	2.70
60.0	7.67	2.70
60.0	9.08	2.70
65.0	3.00	2.70
65.0	6.67	2.70
65.0	7.67	2.70
65.0	9.08	2.70
70.0	3.00	2.70
70.0	6.67	2.70
70.0	7.67	2.70
70.0	9.08	2.70

FLAT PANEL TABLE 3 - MAXIMUM ALLOWABLE STORM SPAN SCHEDULE	
POS/NEG DESIGN LOAD (PSF)	L MAX (FT-IN)
25	9' - 1"
30	9' - 1"
35	9' - 1"
40	9' - 1"
45	9' - 1"
50	9' - 1"
55	9' - 1"
60	9' - 1"
65	8' - 5"
70	3' - 8"

FLAT PANEL - ANCHOR SCHEDULE															
FASTENER MAXIMUM SPACING (INCHES) REQUIRED FOR VARIOUS DESIGN LOADS AND SPANS															
EXIST. STRUC.	ANCHOR TYPE	LOAD (W) P.S.F. MAX. (SEE NOTE 1)	MIN. 3/4" EDGE DISTANCE												
			SPANS UP TO 3'		SPANS UP TO 6'-8"		SPANS UP TO 7'-8"		SPANS UP TO 9'-1"						
			(SEE NOTE 1)		(SEE NOTE 1)		(SEE NOTE 1)		(SEE NOTE 1)						
			CONNECTION TYPE	C1	C2	C3	C1	C2	C3	C1	C2	C3			
WOOD	1/2" Ø X 2-1/8" DEWALT PANELMATE INSERT WITH MIN. 1-5/8" EMBEDMENT & 1/4-20 STAINLESS STEEL MACHINE SCREW (MIN. 55 S.G.)	30	12	12	12	12	8	6	12	7	5	12	6	4	
		40	12	12	10	12	6	4	12	5	4	12	4	3	
		50	12	11	8	12	5	3	12	4	3	12	3	3	
		60	12	9	6	12	4	3	12	3	10	3	10	3	
		70	12	8	5	11	3	10	3	10	3	10	3	10	3
		70	12	8	5	11	3	10	3	10	3	10	3	10	3
	1/4" Ø DEWALT MALE/FEMALE PANELMATE W/ 1-7/8" MIN. EMBED. & 1/4-10 MACHINE SCREW WITH NUT (MIN. 55 S.G.)	30	12	12	12	12	12	8	12	11	7	12	9	6	
		40	12	12	12	12	9	6	12	8	5	12	7	5	
		50	12	12	11	12	7	5	12	6	4	12	5	4	
		60	12	12	9	12	6	4	12	5	4	12	4	3	
		70	12	12	8	12	5	4	12	5	3	12	4	3	
		70	12	12	8	12	5	4	12	5	3	12	4	3	
1/4" Ø X MIN. 3" LONG LAG SCREW WITH MIN. 1-3/4" EMBEDMENT. SHEAR PARALLEL TO WOOD GRAIN (MIN. 55 S.G.)	30	12	12	12	12	12	12	12	11	12	11	9	8		
	40	12	12	12	12	9	12	10	8	12	10	8	7		
	50	12	12	12	12	9	7								

8/16/2023 6:54 PM
z:\projects\ultratek worldwide\bc-23-0277.2 - fbc submittal - cleartek invisible\dwg\utw001.dwg

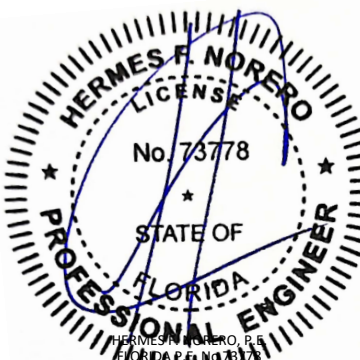
TITLE: CLEARTEK STORM PANEL SYSTEM (HVHZ) (IMPACT)
CORRUGATED PANEL VERTICAL SECTIONS

PREPARED BY: BUILDING DROPS, INC.
398 E. DANIA BEACH BLVD., STE. 338
DANIA BEACH, FL 33004
PH: (954) 399-8478
FAX: (954) 474-4738
WEB: www.buildingdrops.com



REMARKS	BY	DATE

THE INSTALLATION DETAILS DESCRIBED HEREIN ARE GENERIC AND MAY NOT REFLECT ACTUAL CONDITIONS FOR A SPECIFIC SITE. IF SITE CONDITIONS CAUSE INSTALLATION TO DEVIATE FROM THE REQUIREMENTS DETAILED HEREIN, A LICENSED ENGINEER OR ARCHITECT SHALL PERFORM SITE SPECIFIC DOCUMENTS FOR USE WITH THIS DOCUMENT.



HERMES F. NORERO
LICENSE
No. 73778
STATE OF FLORIDA
PROFESSIONAL ENGINEER

HERMES F. NORERO, P.E.
BUILDING DROPS, INC.
398 E. DANIA BEACH BLVD. # 338
DANIA BEACH, FL 33004
FBPE CERT. OF AUTHORIZATION No. 29578

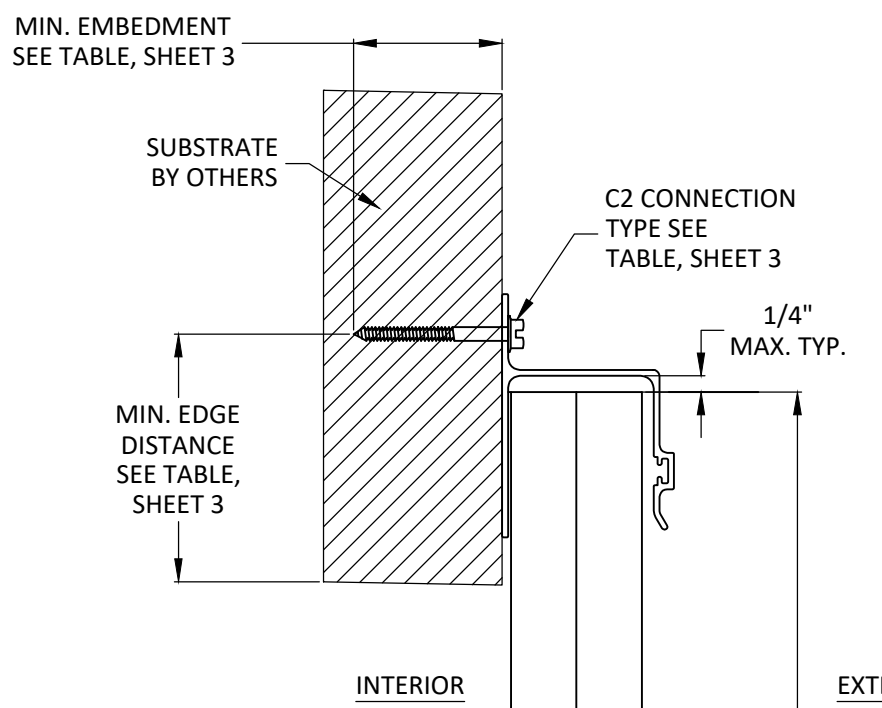
FL #: **FL17733**

DATE: **06.26.23**

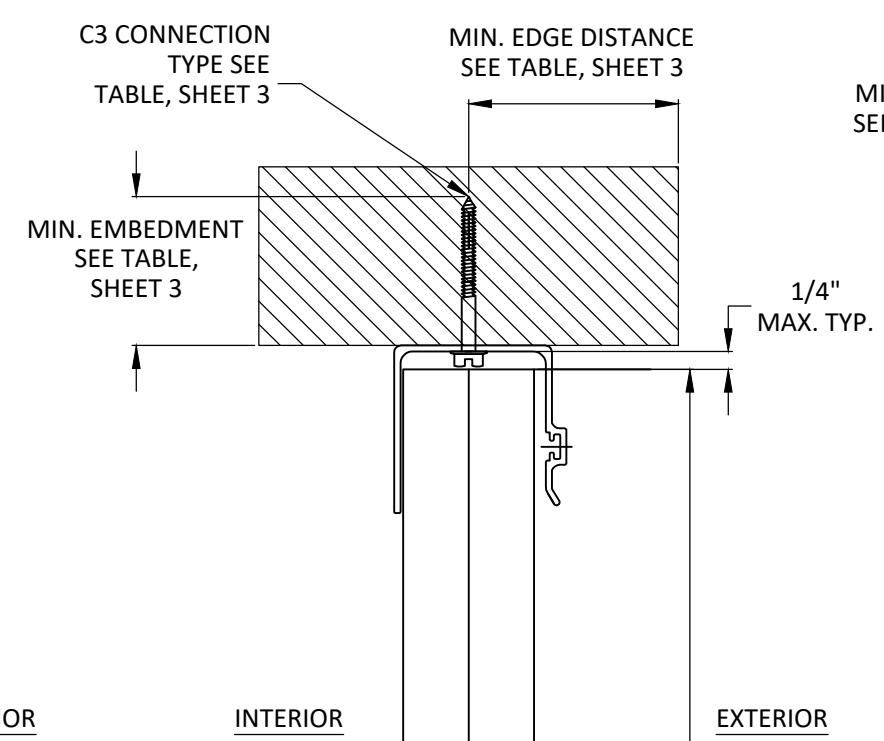
DWG. BY: MG	CHK. BY: HFN
--------------------	---------------------

SCALE: **NTS**

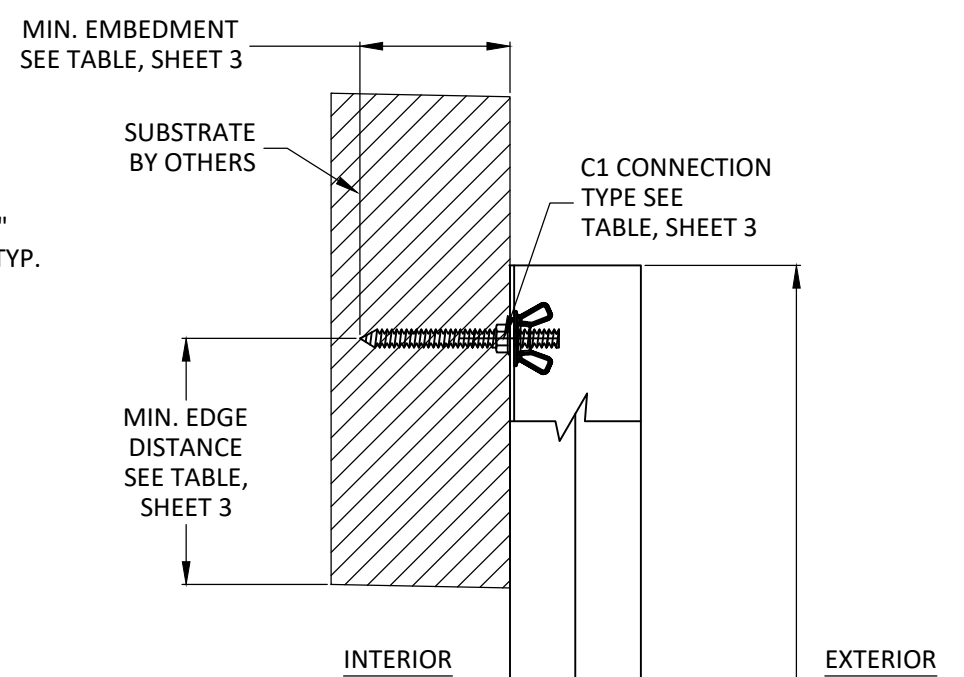
DWG. #: **UTW001**



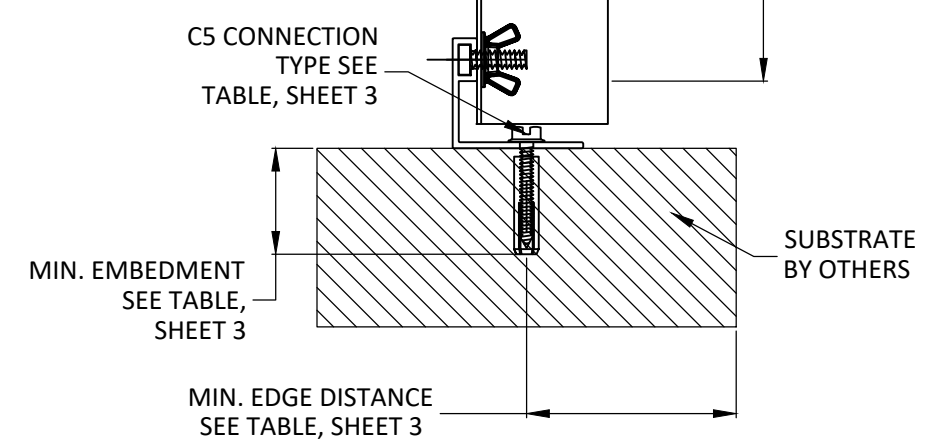
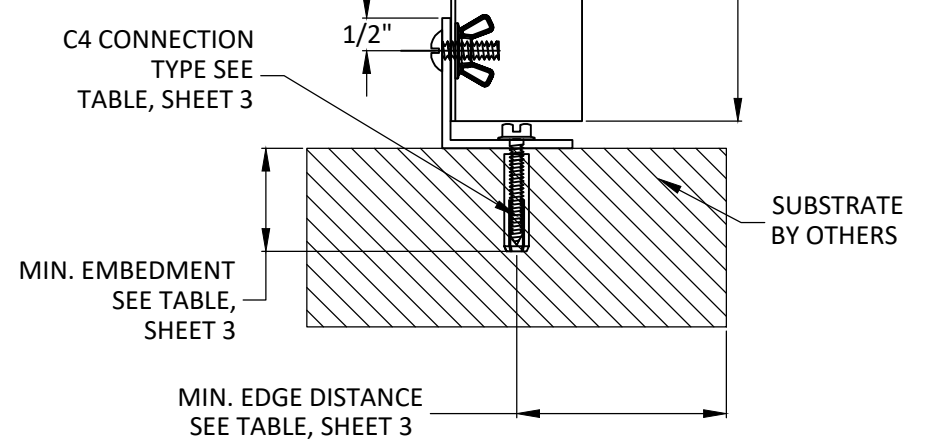
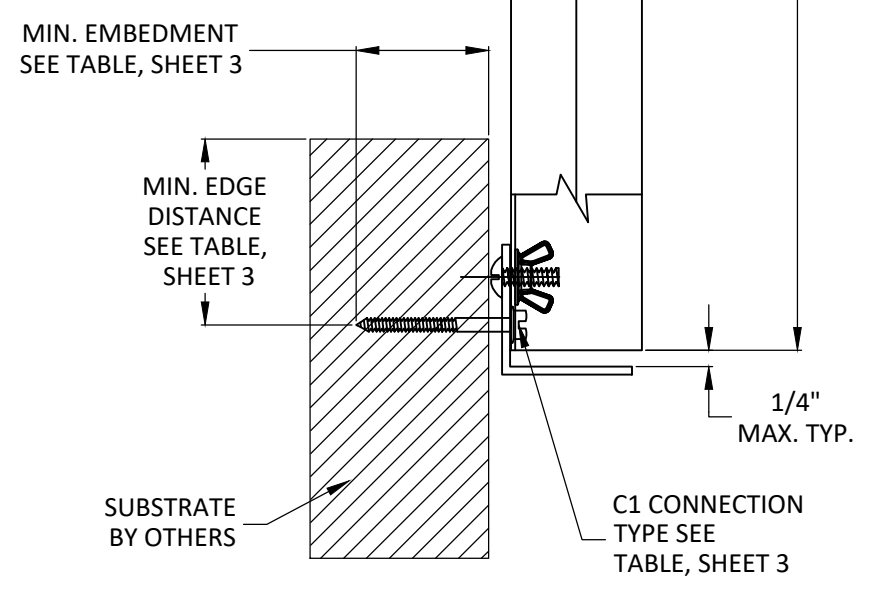
A
5
VERTICAL SECTION
H-TRACK - TOP
STUDED ANGLE - BOTTOM



B
5
VERTICAL SECTION
U-TRACK - TOP
STUDED ANGLE - BOTTOM



C
5
VERTICAL SECTION
DIRECT MOUNT - TOP
E-TRACK - BOTTOM



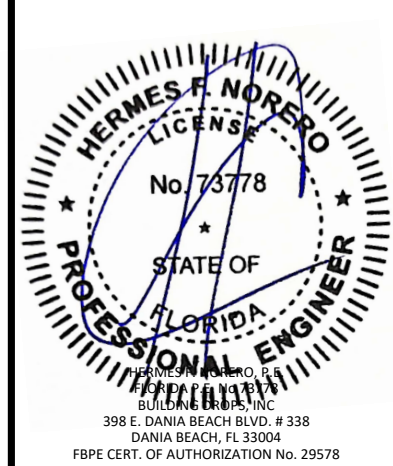
8/16/2023 6:54 PM
z:\projects\ultratek worldwide\bc-23-0277.2 - fbc submittal - clearstek - clearstek\invisishield (revision)\dwg\utw001.dwg

TITLE: CLEARTEK STORM PANEL SYSTEM
(HVHZ) (IMPACT)
CORRUGATED PANEL VERTICAL SECTIONS

PREPARED BY: **BUILDING DROPS, INC.**
398 E. DANIA BEACH BLVD, STE. 338
DANIA BEACH, FL 33004
PH: (954) 399-8478
FAX: (954) 44-4738
WEB: www.buildingdrops.com

REMARKS	BY	DATE

THE INSTALLATION DETAILS DESCRIBED HEREIN ARE GENERIC AND MAY NOT REFLECT ACTUAL CONDITIONS FOR A SPECIFIC SITE. IF SITE CONDITIONS CAUSE INSTALLATION TO DEVIATE FROM THE REQUIREMENTS DETAILED HEREIN, A LICENSED ENGINEER OR ARCHITECT SHALL PERFORM SITE SPECIFIC DOCUMENTS FOR USE WITH THIS DOCUMENT.



FL #: **FL17733**

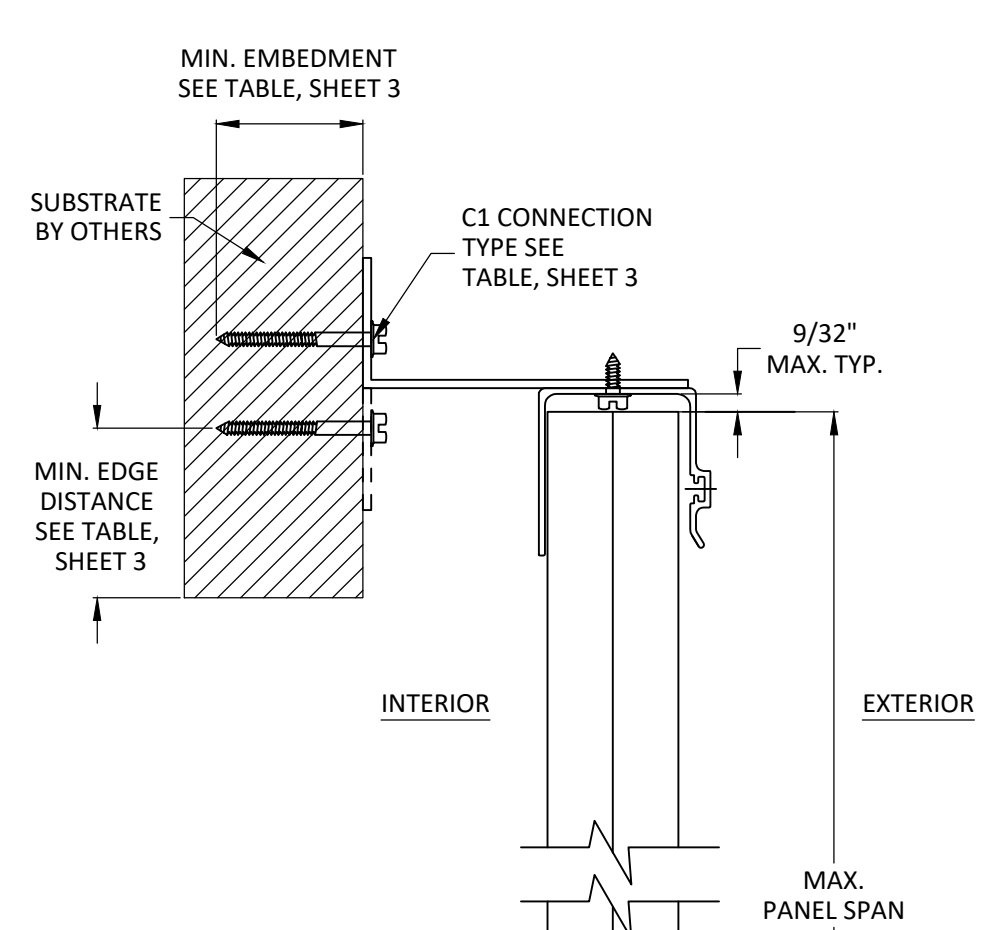
DATE: **06.26.23**

DWG. BY: MG	CHK. BY: HFN
-----------------------	------------------------

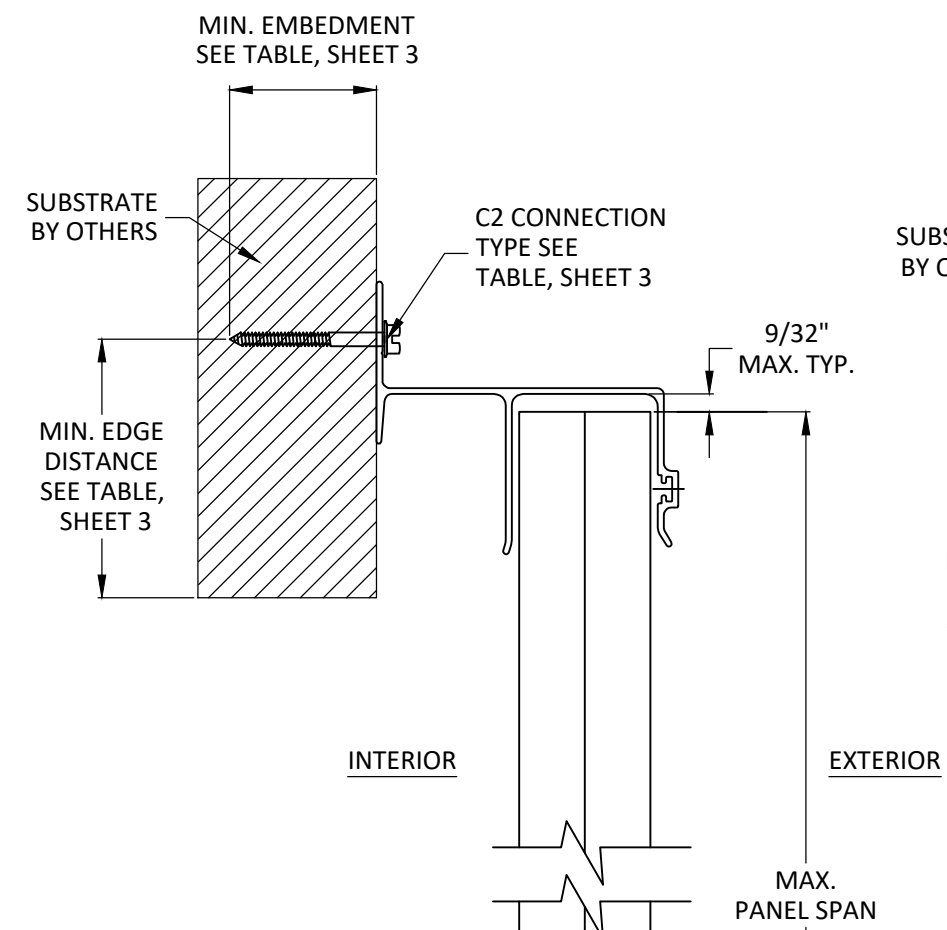
SCALE: **NTS**

DWG. #: **UTW001**

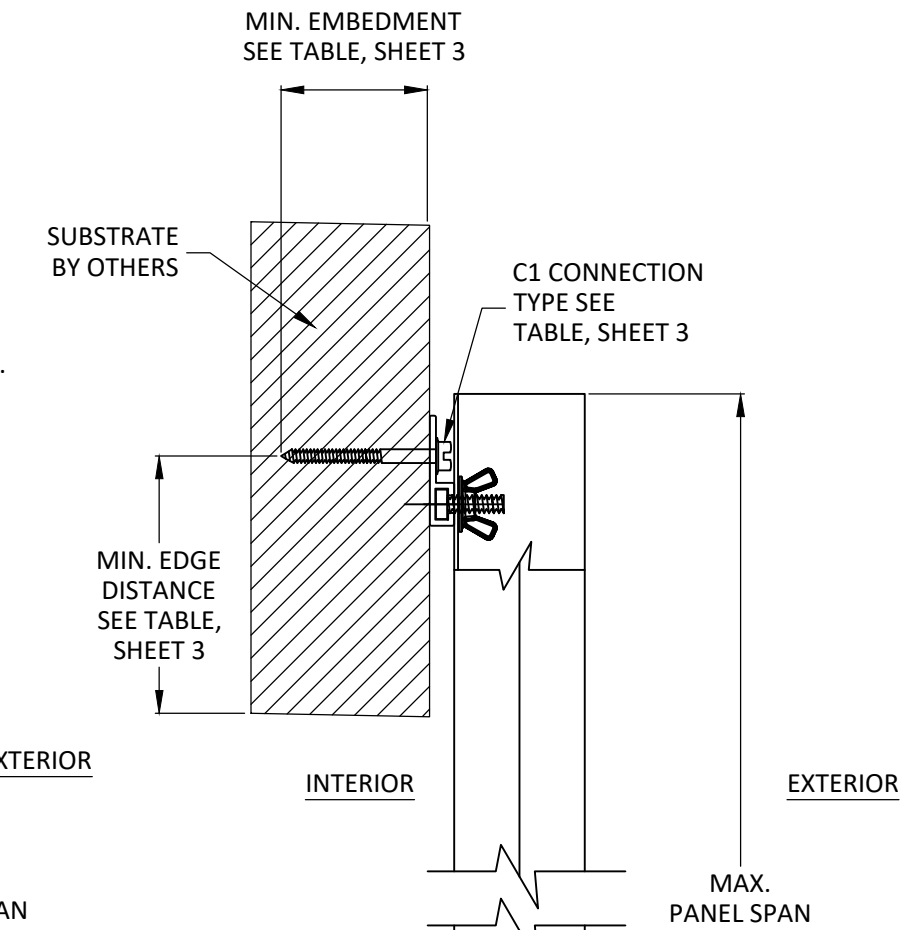
SHEET: **6**
OF 12



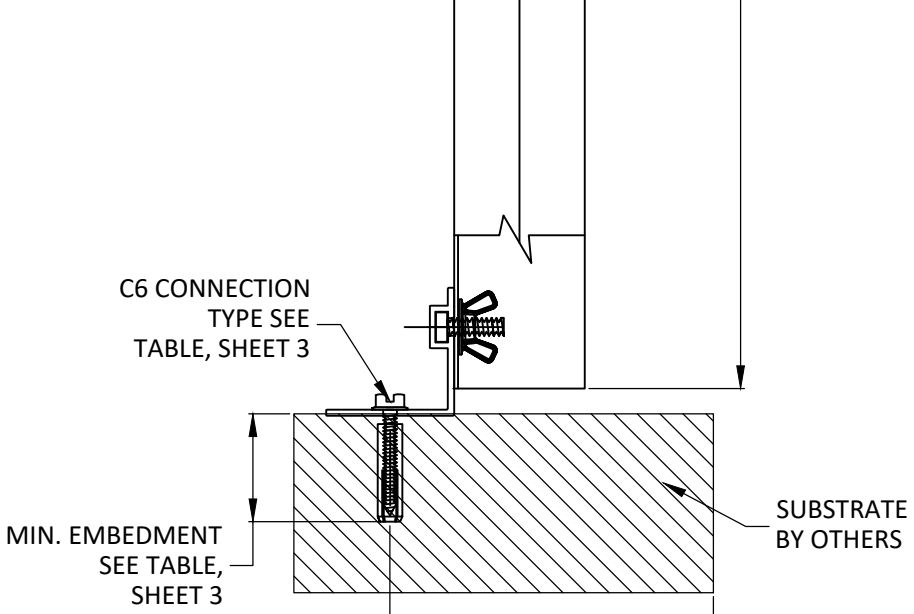
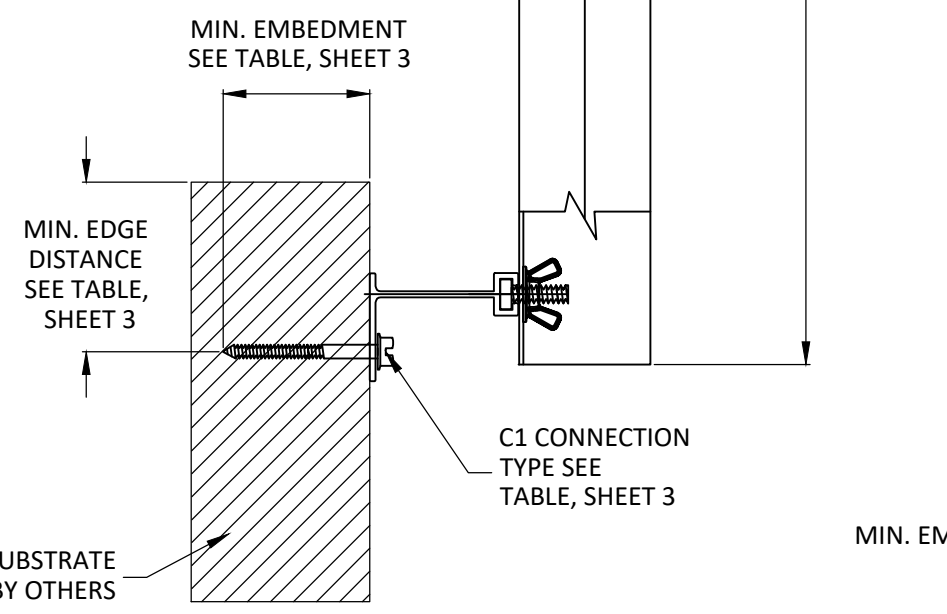
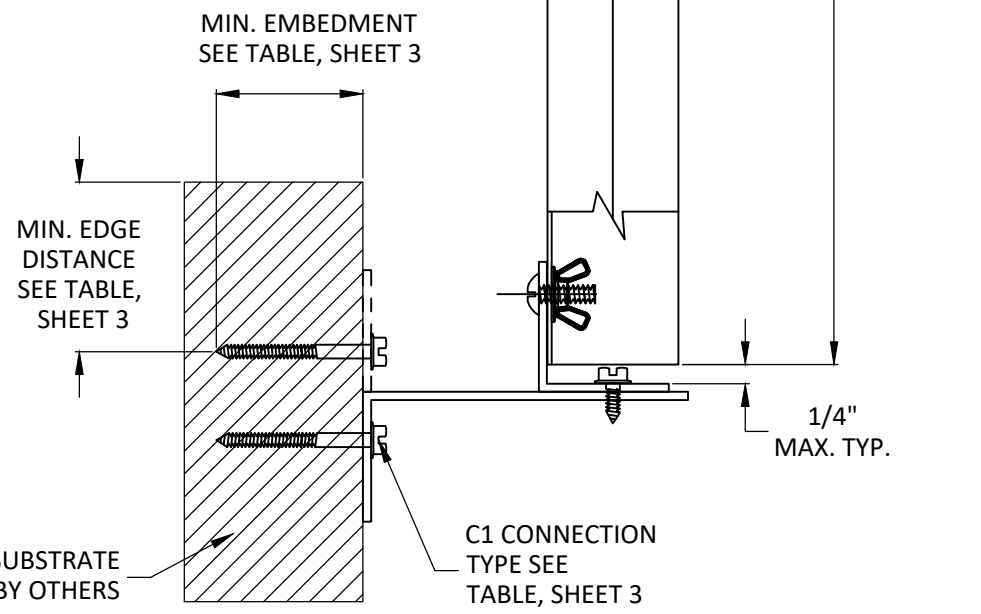
A
6 **VERTICAL SECTION**
BUILD-OUT MOUNT U-TRACK - TOP
BUILD-OUT MOUNT STUDDED ANGLE - BOTTOM



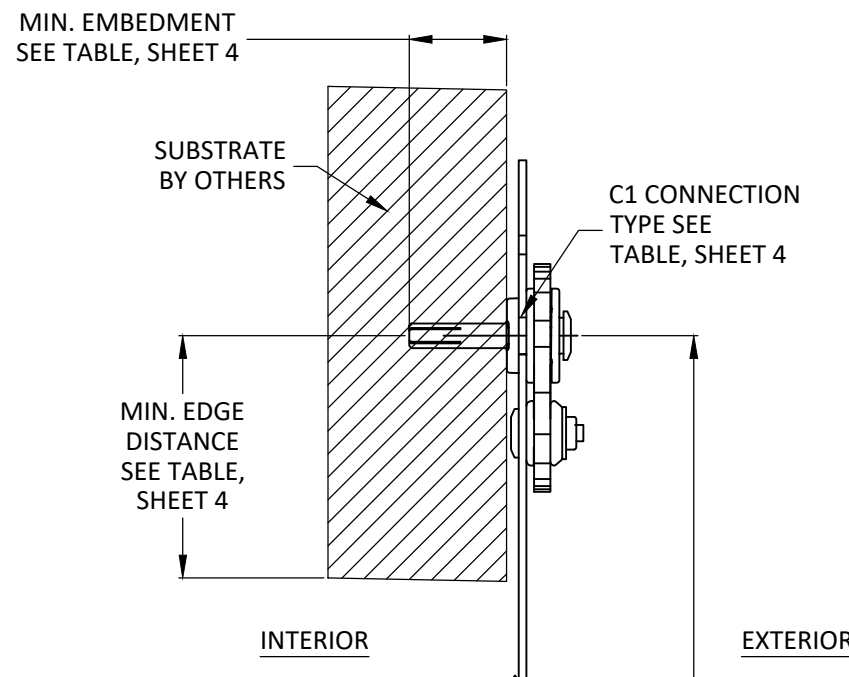
B
6 **VERTICAL SECTION**
H-TRACK - TOP
F-TRACK - BOTTOM



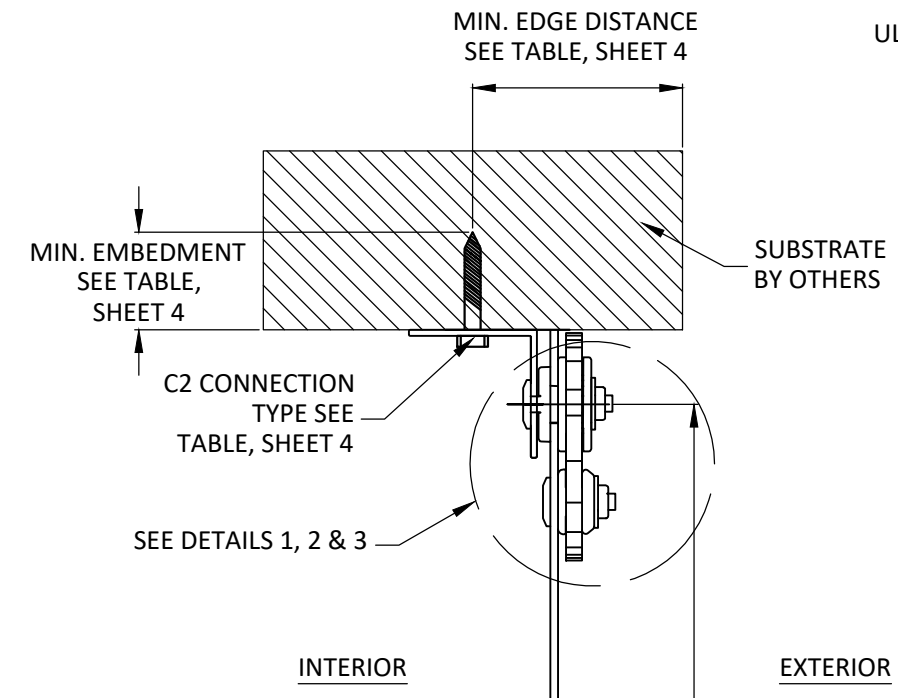
C
6 **VERTICAL SECTION**
FLAT F-TRACK - TOP
REVERSE E-TRACK - BOTTOM



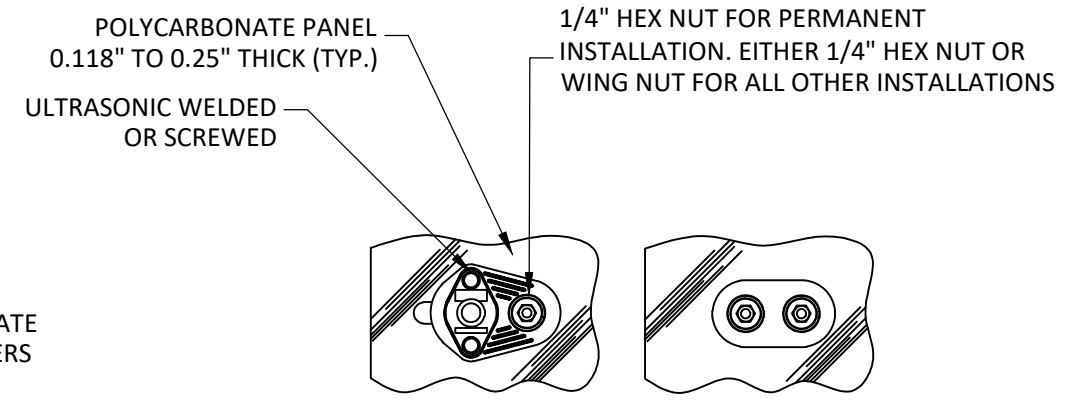
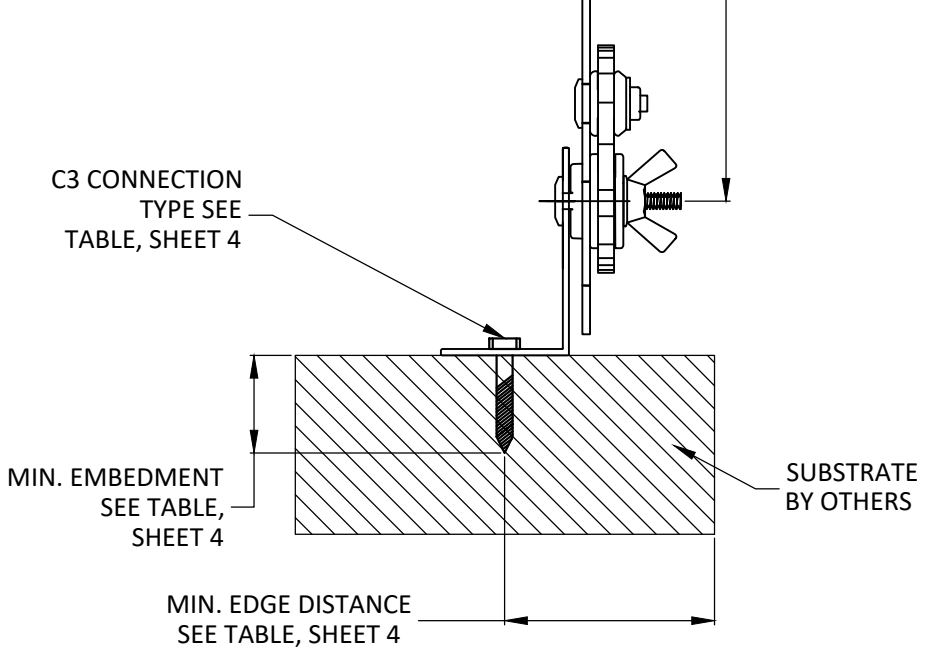
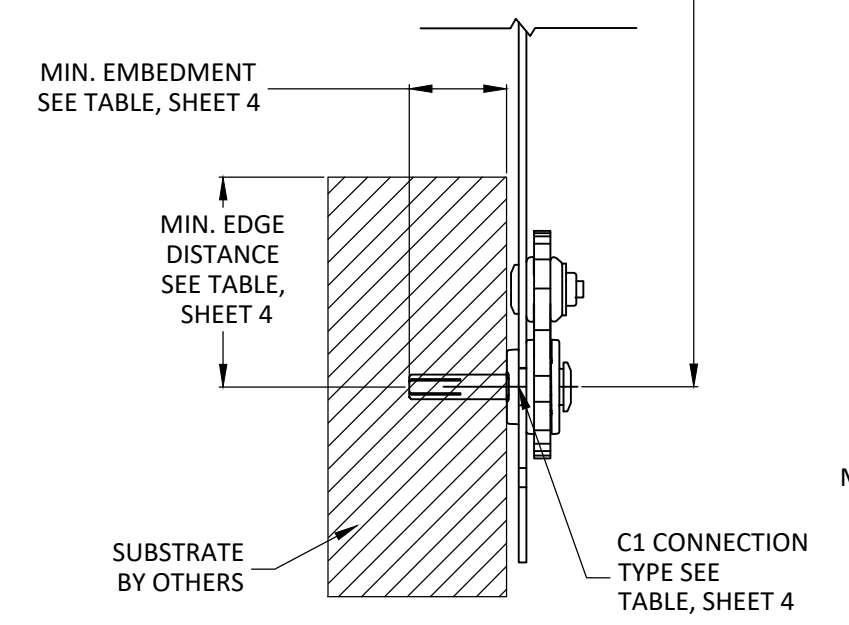
8/16/2023 6:54 PM
z:\projects\ultratek worldwide\bc-23-0277.2 - fbc submittal - cleartek invisible\dwg\utw001.dwg



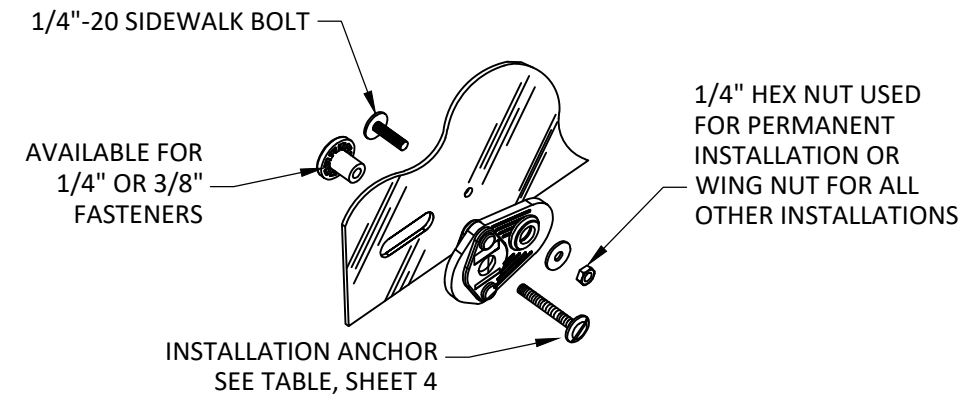
A
7 **VERTICAL SECTION**
DIRECT MOUNT



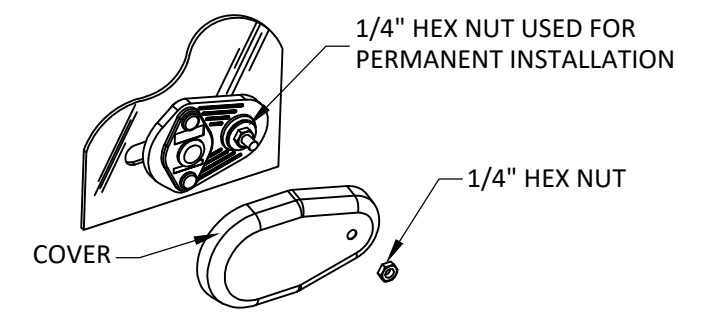
B
7 **VERTICAL SECTION**
BUILD-OUT



DETAIL 1
CLEARTEK STRETCH BRACKET



DETAIL 2
ATTACHMENT DETAIL TYP.



DETAIL 3
OPTIONAL COVER

- NOTES:**
- 1) SIDE COURTESY STRETCH BRACKETS MAY BE USED.
 - 2) STRETCH BRACKETS MAY BE USED ON ARCHED PANEL SECTIONS.
 - 3) PANELS MAY BE CURVED AND/OR CUT TO FOLLOW THE PROFILE AROUND CIRCLES, ARCHES AND ANY OTHER IRREGULAR-SHAPED OPENINGS.
 - 4) PANEL EDGES CAN BE BENT TO INCREASE RIGIDITY.
 - 5) AN OPTIONAL UV AND/OR SOLAR EXTERNAL LAYER MAY BE ADDED ONTO THE SYSTEM.

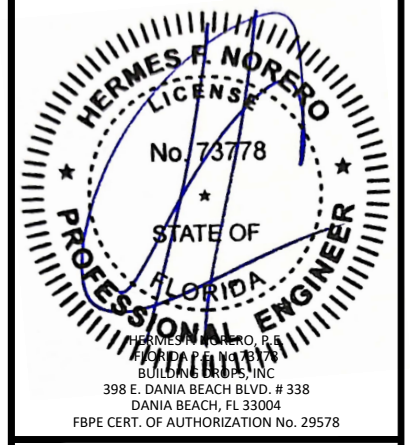
TITLE: CLEARTEK STORM PANEL SYSTEM (HVHZ) (IMPACT)
FLAT PANEL VERTICAL SECTIONS & DETAILS

PREPARED BY: **BUILDING DROPS, INC.**
398 E. DANIA BEACH BLVD., STE. 338
DANIA BEACH, FL 33004
PH: (954) 399-8478
FAX: (954) 744-4738
WEB: www.buildingdrops.com

BUILDING DROPS

REMARKS	BY	DATE

THE INSTALLATION DETAILS DESCRIBED HEREIN ARE GENERIC AND MAY NOT REFLECT ACTUAL CONDITIONS FOR A SPECIFIC SITE. IF SITE CONDITIONS CAUSE INSTALLATION TO DEVIATE FROM THE REQUIREMENTS DETAILED HEREIN, A LICENSED ENGINEER OR ARCHITECT SHALL PERFORM SITE SPECIFIC DOCUMENTS FOR USE WITH THIS DOCUMENT.



FL #: **FL17733**

DATE: **06.26.23**

DWG. BY: **MG** CHK. BY: **HFN**

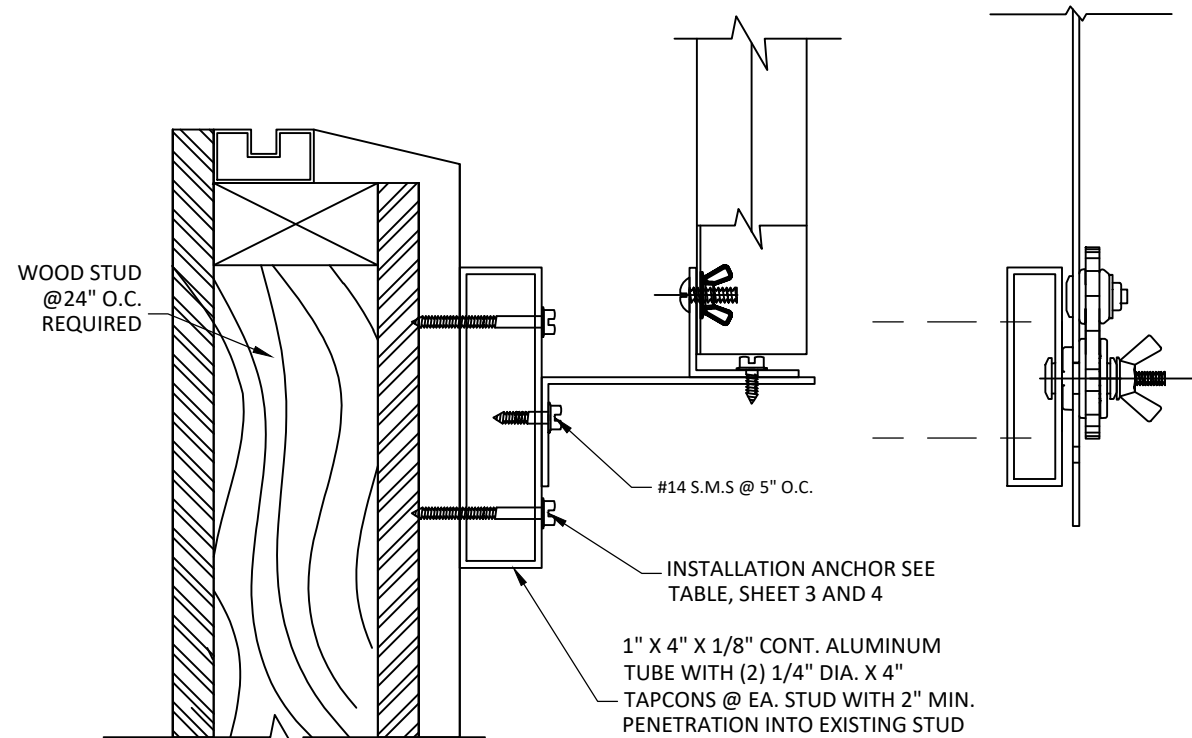
SCALE: **NTS**

DWG. #: **UTW001**

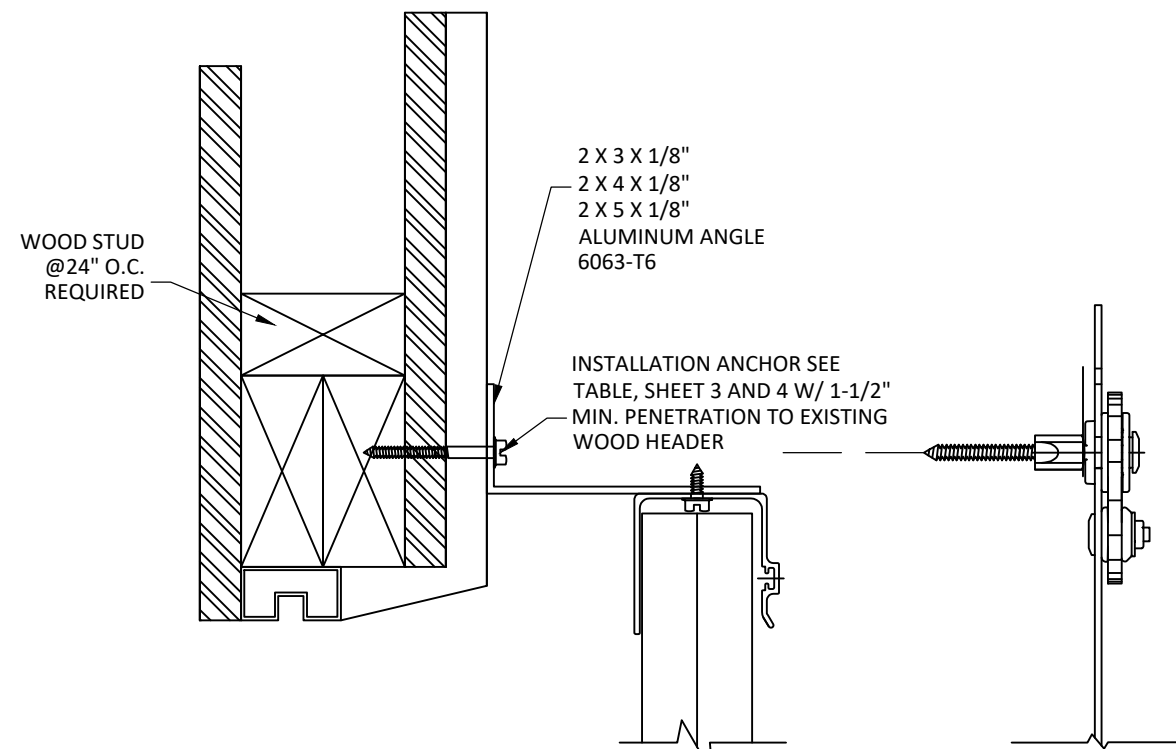
SHEET: **7**

OF 12

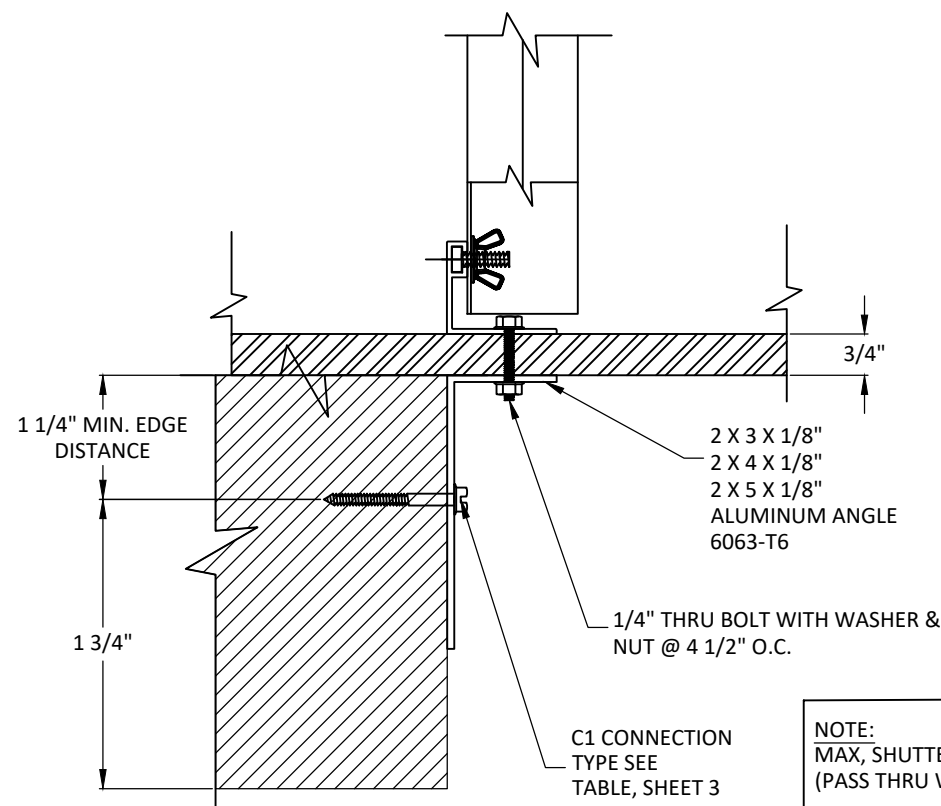
8/16/2023 6:54 PM
z:\projects\ultratek worldwide\bc-23-0277.2 - fbc submittal - cleartek invisible\dwg\utw001.dwg



INSTALLATION DETAIL ON EXISTING WOOD STUDS



INSTALLATION DETAIL ON EXISTING WOOD STUDS



COUNTER TOP CONDITION

NOTE:
MAX, SHUTTER HEIGHT = 6FT.
(PASS THRU WINDOW)

INSTALLATION ON EXISTING WOOD STUDS NOTE:
ABOVE DETAILS SHOW CONNECTIONS OF 2X6 BUCK & 1X4 ALUMINUM TUBE TO WOOD STUDS TO PROVIDE A CONTINUOUS SURFACE FOR A SHUTTER INSTALLATION. FOR INSTALLATION DETAILS OF HEAD/SILL TO CONTINUOUS WOOD MEMBERS SEE SHEETS 5 THROUGH 8

ULTRATEK WORLDWIDE

3801 N. WASHINGTON BLVD
SARASOTA, FLORIDA 34234
PH: (941) 351-6700

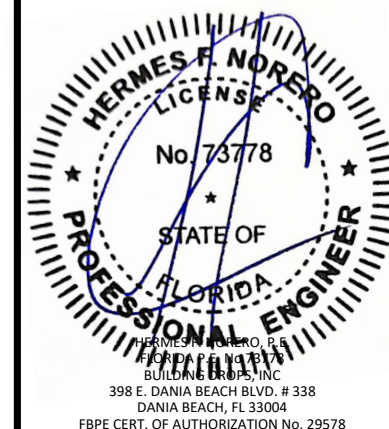
TITLE: CLEARTEK STORM PANEL SYSTEM (HVHZ) (IMPACT)
INSTALLATION DETAILS

PREPARED BY: BUILDING DROPS, INC.
398 E. DANIA BEACH BLVD., STE. 338
DANIA BEACH, FL 33004
PH: (954) 399-8478
FAX: (954) 474-4738
WEB: www.buildingdrops.com



REMARKS	BY	DATE

THE INSTALLATION DETAILS DESCRIBED HEREIN ARE GENERIC AND MAY NOT REFLECT ACTUAL CONDITIONS FOR A SPECIFIC SITE. IF SITE CONDITIONS CAUSE INSTALLATION TO DEVIATE FROM THE REQUIREMENTS DETAILED HEREIN, A LICENSED ENGINEER OR ARCHITECT SHALL PERFORM SITE SPECIFIC DOCUMENTS FOR USE WITH THIS DOCUMENT.



FL #: **FL17733**

DATE: **06.26.23**

DWG. BY: **MG** CHK. BY: **HFN**

SCALE: **NTS**

DWG. #: **UTW001**

SHEET:

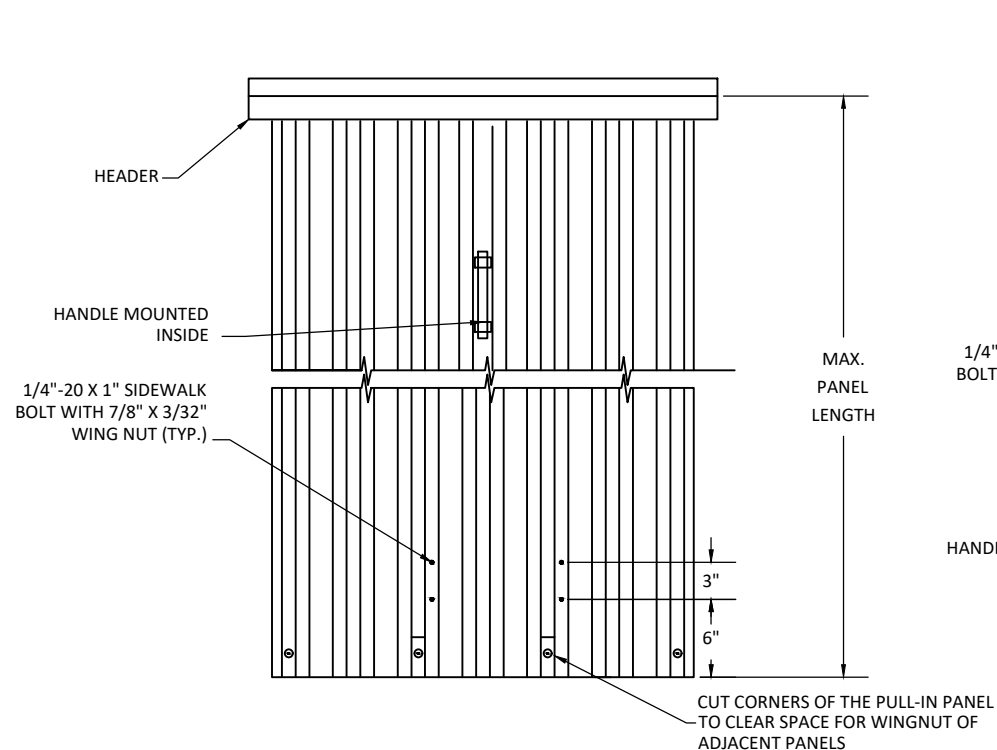
8

OF 12

8/16/2023 6:54 PM
z:\projects\ultratek worldwide\lbc-23-0277.2 - fbc submittal - clearstek invisishield (revision)\dwg\utw001.dwg

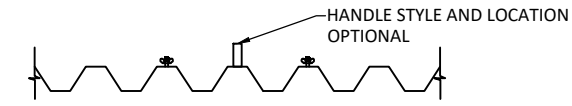
TITLE: **CLEARTEK STORM PANEL SYSTEM (HVHZ) (IMPACT)**
INSTALLATION DETAILS

PREPARED BY:
BUILDING DROPS, INC.
398 E. DANIA BEACH BLVD., STE. 338
DANIA BEACH, FL 33004
PH: (954) 399-8478
FAX: (954) 44-4738
WEB: www.buildingdrops.com

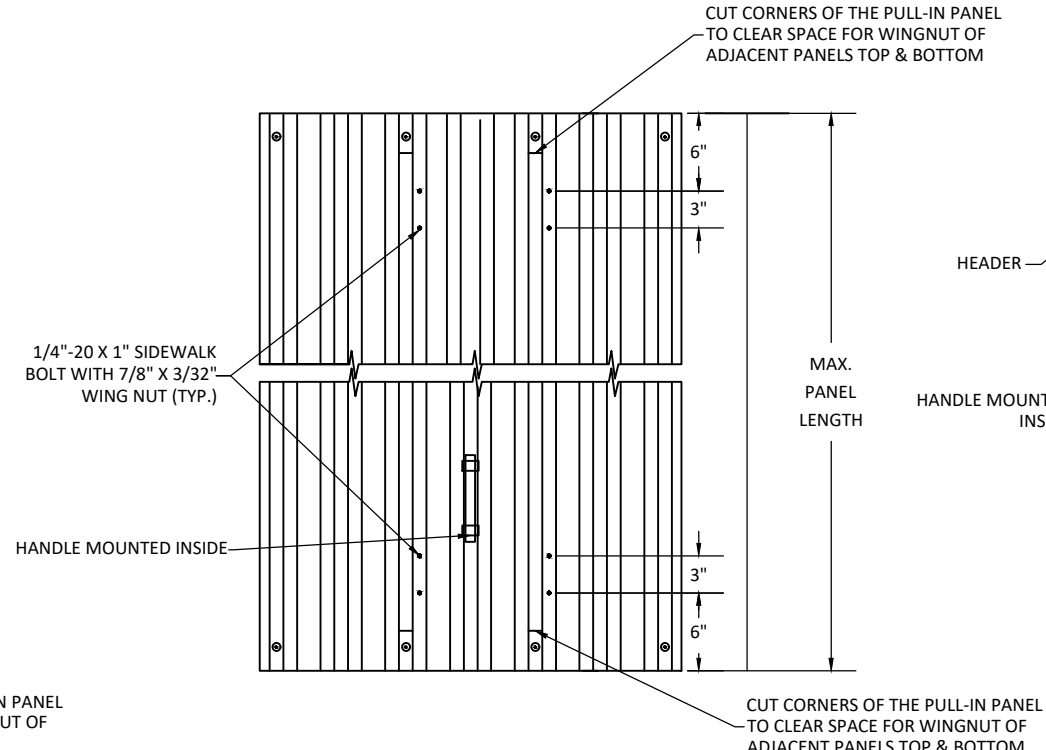


TYPICAL ELEVATION

OPTION #1 - EGRESS

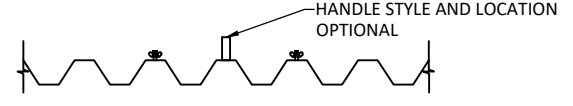


PLAN VIEW TYPICAL

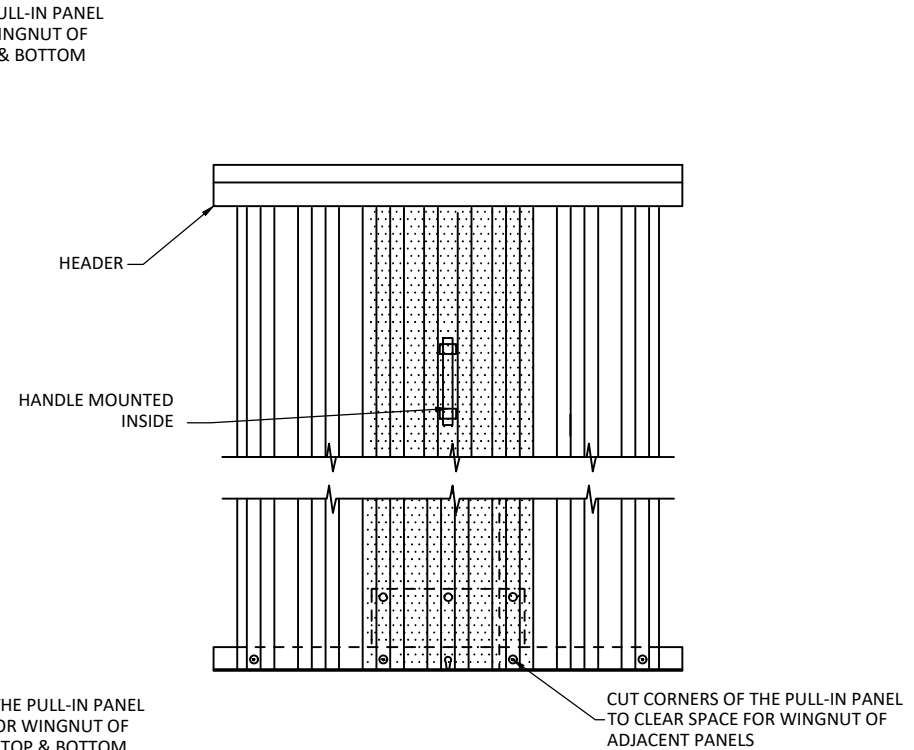


TYPICAL ELEVATION

OPTION #2 - EGRESS

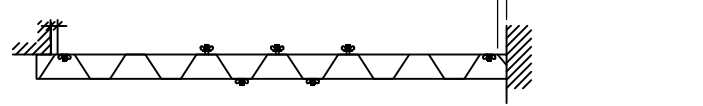


PLAN VIEW TYPICAL



TYPICAL ELEVATION

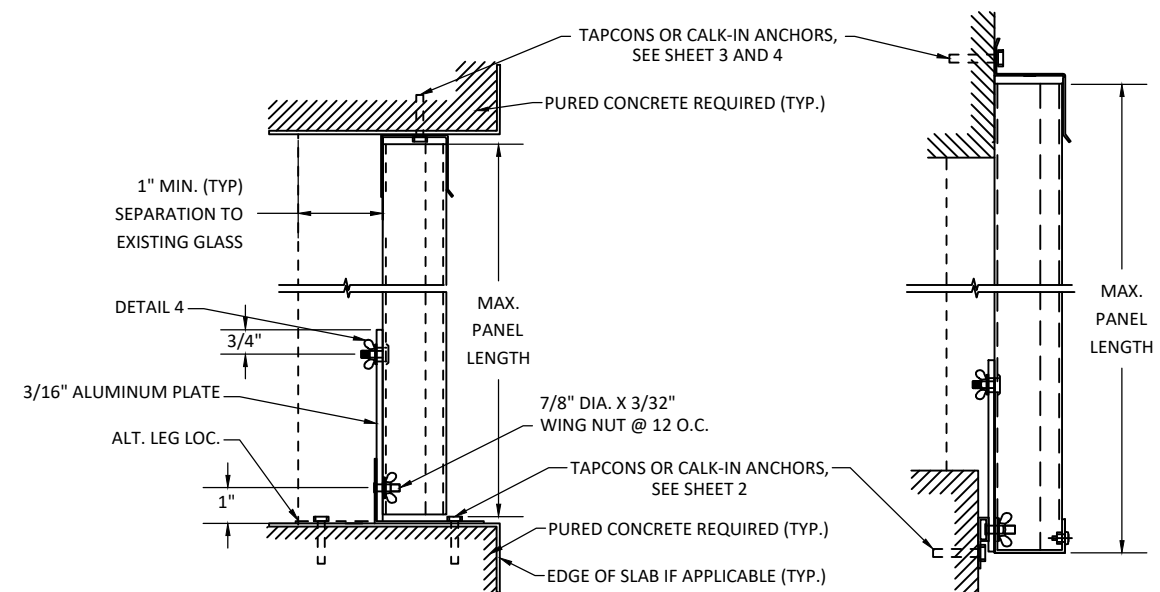
OPTION #3 - EGRESS



PLAN VIEW TYPICAL

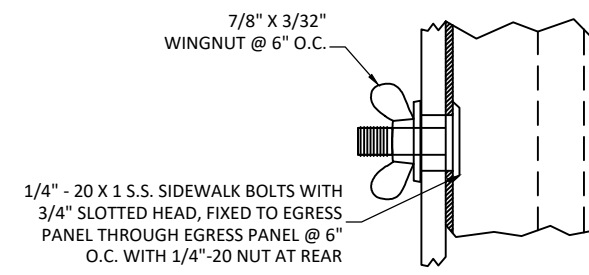
REMARKS	BY	DATE

THE INSTALLATION DETAILS DESCRIBED HEREIN ARE GENERIC AND MAY NOT REFLECT ACTUAL CONDITIONS FOR A SPECIFIC SITE. IF SITE CONDITIONS CAUSE INSTALLATION TO DEVIATE FROM THE REQUIREMENTS DETAILED HEREIN, A LICENSED ENGINEER OR ARCHITECT SHALL PERFORM SITE SPECIFIC DOCUMENTS FOR USE WITH THIS DOCUMENT.

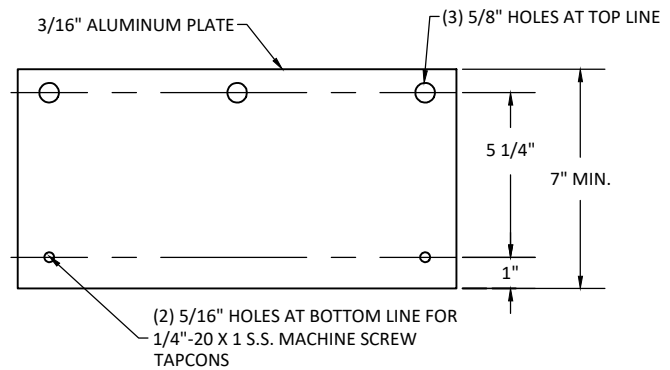


OPTION #3 - EGRESS CEILING AND FLOOR MOUNTING INSTALLATION

OPTION #3 - EGRESS WALL MOUNTING INSTALLATION

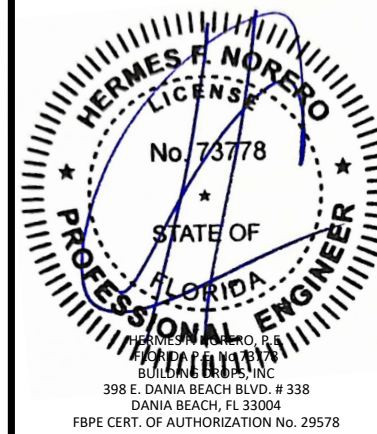


DETAIL 4



OPTION #3 - EGRESS 7" X 14" X 3/16" WALL PLATE

SIDE CLOSURE NOTE:
FOR WALL MOUNT CONDITIONS, PANEL OVERLAP SHALL BE A MINIMUM OF 1.5 TIMES THE GAP BETWEEN THE PANEL AND THE WALL; THEREFORE, NO SIDE CLOSURE WILL BE REQUIRED.



FL #: **FL17733**

DATE: **06.26.23**

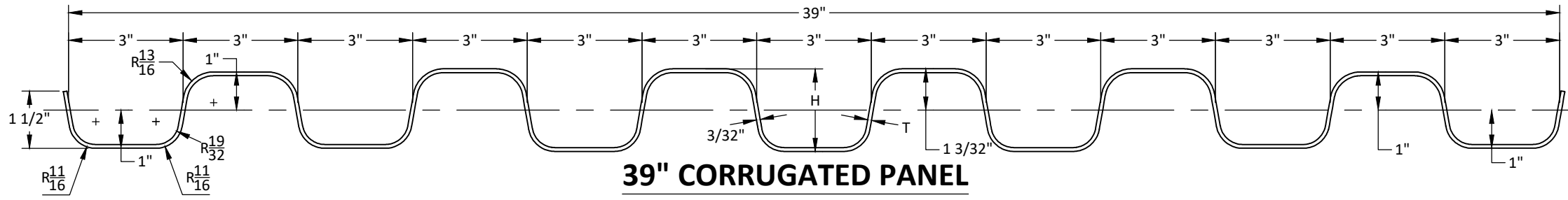
DWG. BY: **MG** | CHK. BY: **HFN**

SCALE: **NTS**

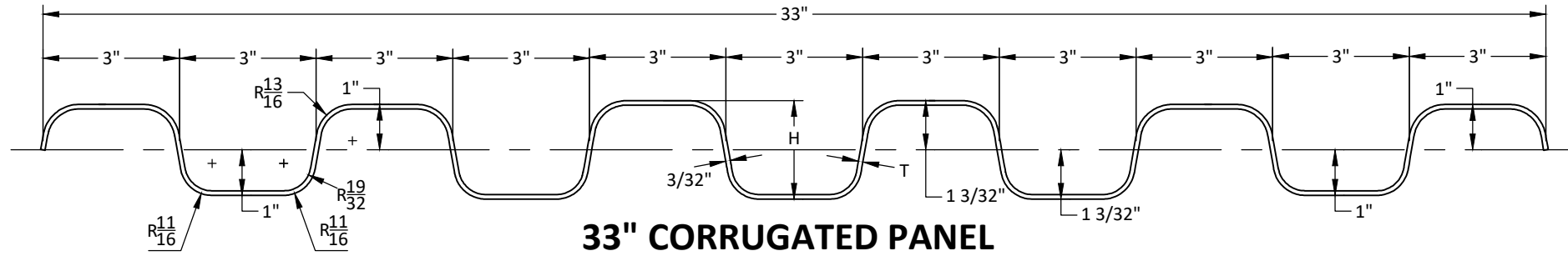
DWG. #: **UTW001**

SHEET: **9**

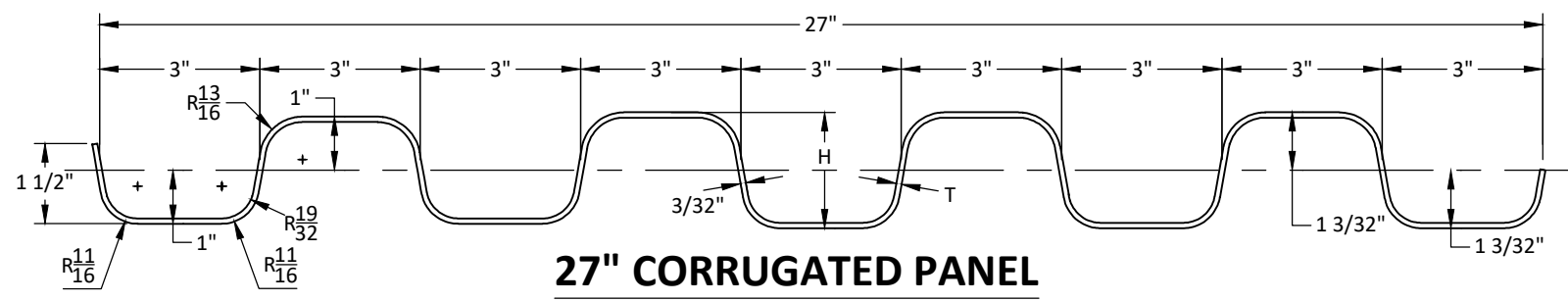
8/16/2023 6:54 PM
z:\projects\ultratek worldwide\fb-23-0277.2 - fbc submittal - cleartek invisible\dwg\utw001.dwg



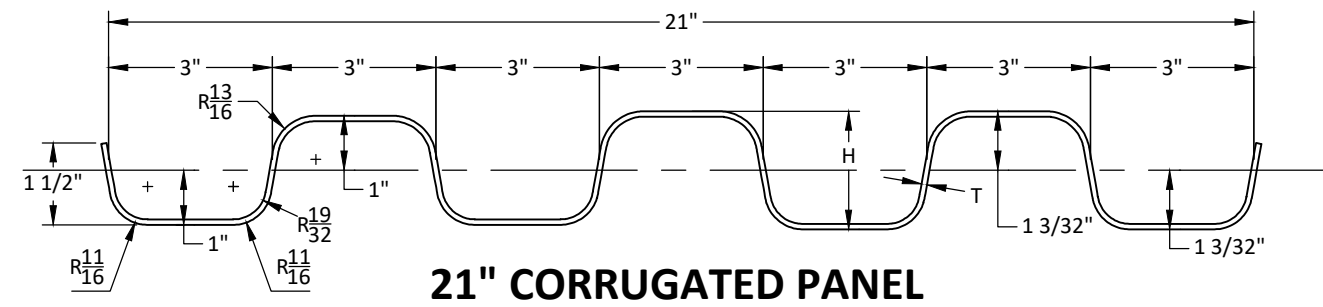
39" CORRUGATED PANEL



33" CORRUGATED PANEL

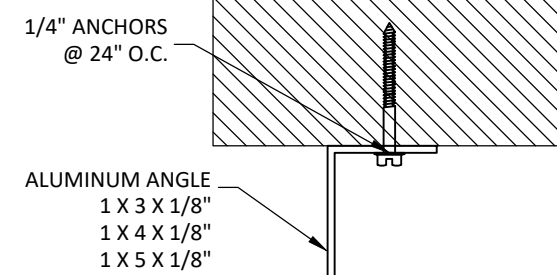


27" CORRUGATED PANEL

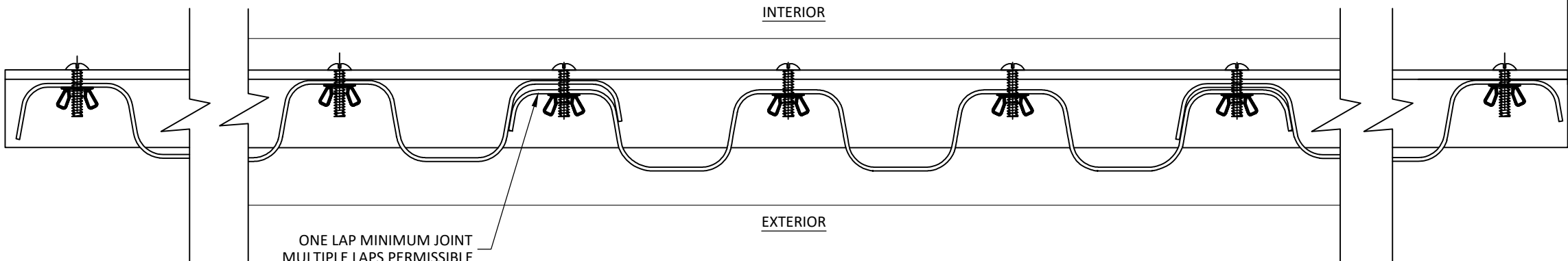


21" CORRUGATED PANEL

NOTE:
ALUMINUM ANGLE
END CAP REQUIRED ONLY
FOR BUILD-OUT CONDITION



- NOTES:**
- 1) DIMENSION "H" MUST BE 53.3 ~ 55.0 mm.
 - 2) ALL INCLINED PLANE THE THICKNESS "T" MUST BE MINIMUM 2.10 mm.
 - 3) THICKNESS: 2.36 mm TO 2.50 mm ± 0.05.
 - 4) PANELS MAY BE BENT ALONG CORRUGATION TO MATCH CURVED OR ANGLED OPENINGS.
 - 5) PANEL RADII MAY VARY BETWEEN 0.1" TO 0.6".
 - 6) ALL PANELS MAY BE CUT TO DECREASE ITS WIDTH.
 - 7) TRACK MAY BE CURVED TO FOLLOW THE INSTALLATION PROFILE AROUND ARCHED AND RADII.
 - 8) HEIGHT OF WAVE MAY VARY DOWN TO 0.75 INCH.
 - 9) PANELS MAY BE BENT OR CURVED TO ACCOMMODATE CURVED OR MITERED GLASS.
 - 10) PANEL WIDTH MAY VARY BY 5%.



A
8 **HORIZONTAL SECTION**

3801 N. WASHINGTON BLVD
SARASOTA, FLORIDA 34234
PH: (941) 351-6700

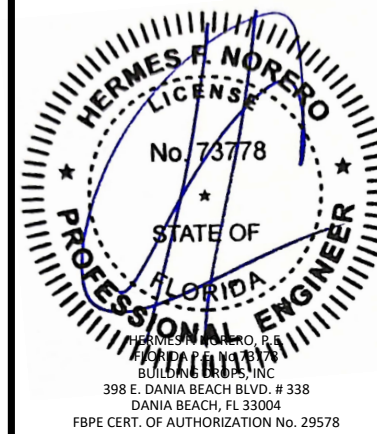
TITLE: CLEARTEK STORM PANEL SYSTEM
(HVHZ) (IMPACT)
CORRUGATED PANEL HORIZONTAL SECTIONS

PREPARED BY:
BUILDING DROPS, INC.
398 E. DANIA BEACH BLVD., STE. 338
DANIA BEACH, FL 33004
PH: (954) 399-8478
FAX: (954) 44-4738
WEB: www.buildingdrops.com



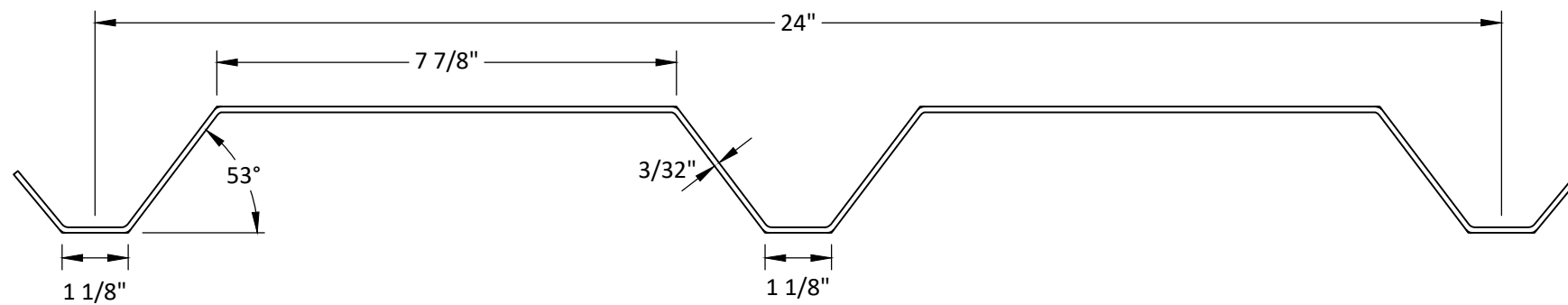
REMARKS	BY	DATE

THE INSTALLATION DETAILS DESCRIBED HEREIN ARE GENERIC AND MAY NOT REFLECT ACTUAL CONDITIONS FOR A SPECIFIC SITE. IF SITE CONDITIONS CAUSE INSTALLATION TO DEVIATE FROM THE REQUIREMENTS DETAILED HEREIN, A LICENSED ENGINEER OR ARCHITECT SHALL PERFORM SITE SPECIFIC DOCUMENTS FOR USE WITH THIS DOCUMENT.



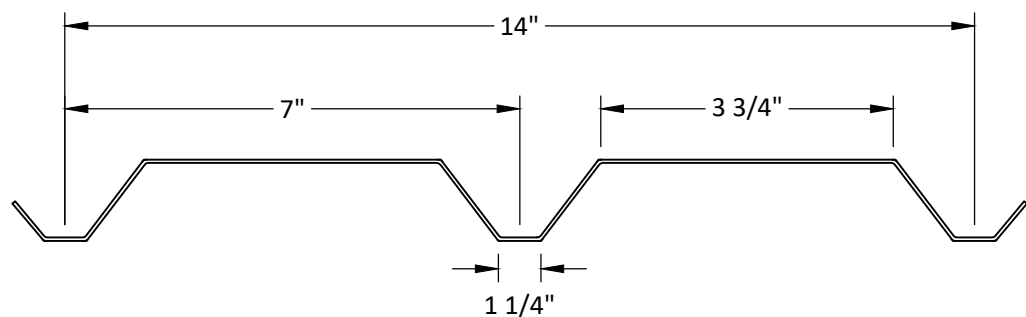
FL #:	FL17733
DATE:	06.26.23
DWG. BY:	MG
CHK. BY:	HFN
SCALE:	NTS
DWG. #:	UTW001

8/16/2023 6:54 PM
z:\projects\ultratek worldwide\bc-23-0277.2 - fbc submittal - cleartek\dwg\utw001.dwg

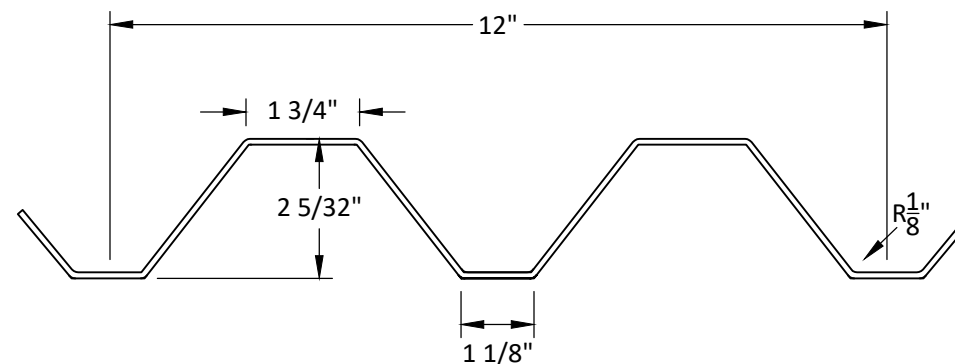


NOTE:
ALTERNATE PANELS "A", "B"
AND "C" MAY ONLY BE USED
AS A DIRECT MOUNT AT
BOTH ENDS

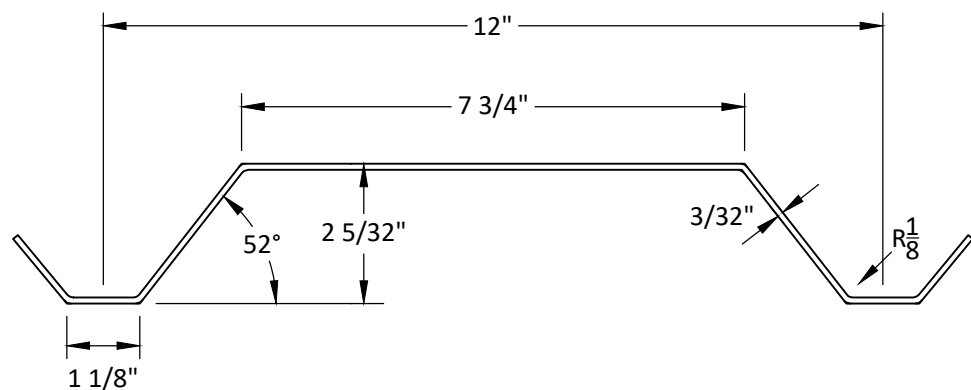
**ALTERNATE "A" 24"
CORRUGATED PANEL**



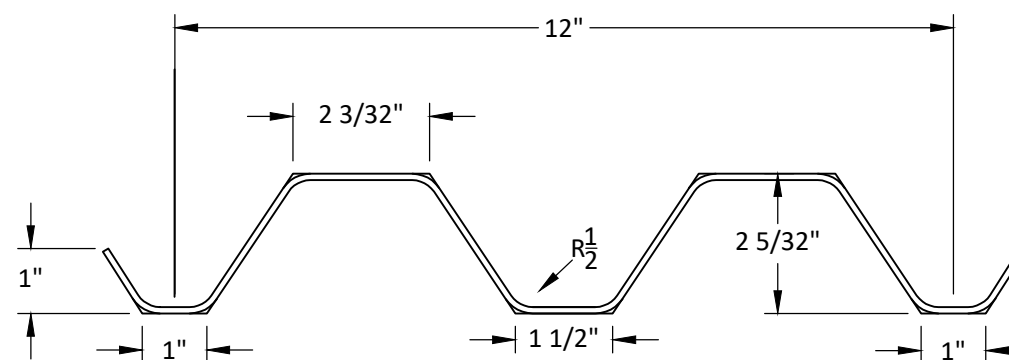
**ALTERNATE "B" 14"
CORRUGATED PANEL**



**ALTERNATE "C" 12"
CORRUGATED PANEL**



**ALTERNATE "D" 12"
CORRUGATED PANEL**



**ALTERNATE "E" 12"
CORRUGATED PANEL**

**ULTRATEK
WORLDWIDE**

3801 N. WASHINGTON BLVD
SARASOTA, FLORIDA 34234
PH: (941) 351-6700

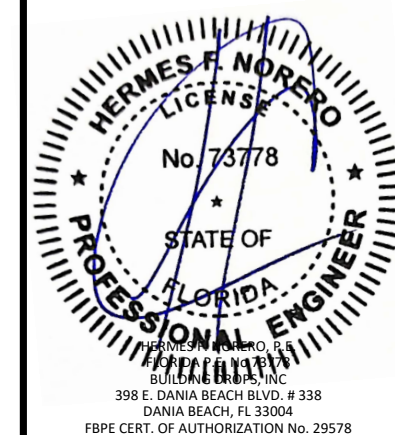
TITLE: CLEARTEK STORM PANEL SYSTEM
(HVHZ) (IMPACT)
ALTERNATE EXTRUSION

PREPARED BY:
BUILDING DROPS, INC.
398 E. DANIA BEACH BLVD., STE. 338
DANIA BEACH, FL 33004
PH: (954) 399-8478
FAX: (954) 744-4738
WEB: www.buildingdrops.com



REMARKS	BY	DATE

THE INSTALLATION DETAILS DESCRIBED HEREIN ARE GENERIC AND MAY NOT REFLECT ACTUAL CONDITIONS FOR A SPECIFIC SITE. IF SITE CONDITIONS CAUSE INSTALLATION TO DEVIATE FROM THE REQUIREMENTS DETAILED HEREIN, A LICENSED ENGINEER OR ARCHITECT SHALL PERFORM SITE SPECIFIC DOCUMENTS FOR USE WITH THIS DOCUMENT.



FL #: **FL17733**

DATE: **06.26.23**

DWG. BY: **MG** CHK. BY: **HFN**

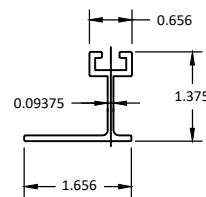
SCALE: **NTS**

DWG. #: **UTW001**

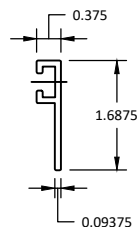
SHEET:
11
OF 12

8/16/2023 6:54 PM
z:\projects\ultratek worldwide\fbc-23-0277.2 - fbc submittal - cleartek\dwg\utw001.dwg

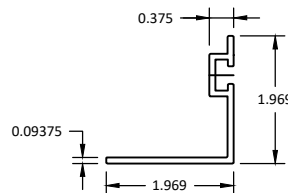
1 1" F-TRACK
ALUMINUM 6061-T6



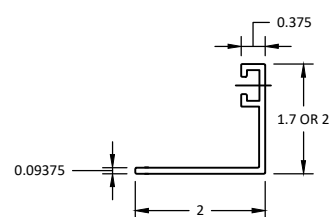
2 FLAT F TRACK
ALUMINUM 6061-T6



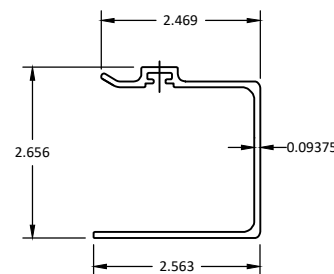
3 REVERSE E TRACK
ALUMINUM 6061-T6



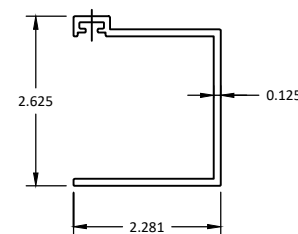
4 E-TRACK
ALUMINUM 6061-T6



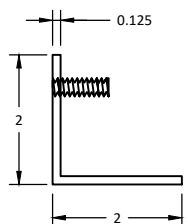
5 U-TRACK
ALUMINUM 6061-T6



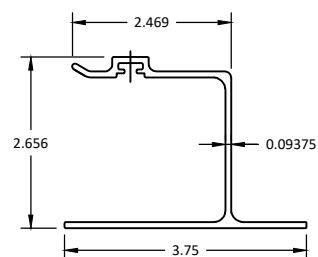
6 U-TRACK
ALUMINUM 6061-T6



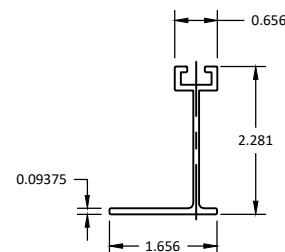
7 STUDDED ANGLE
ALUMINUM 6061-T6



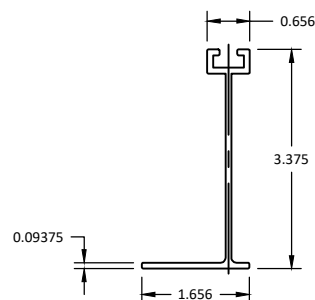
8 STD H-TRACK
ALUMINUM 6061-T6



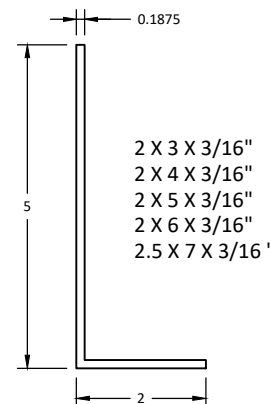
9 2" F-TRACK
ALUMINUM 6061-T6



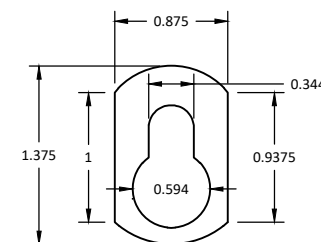
10 3" F-TRACK
ALUMINUM 6061-T6



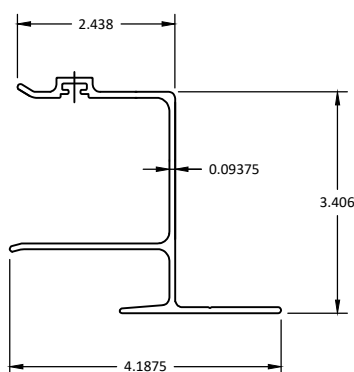
11 BUILT-OUT ANGLES
ALUMINUM 6061-T6



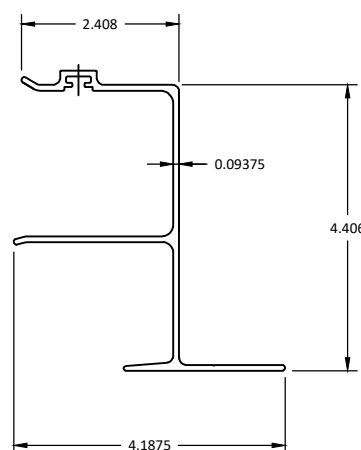
12 KEYHOLE WASHER
ALUMINUM 6063-T6



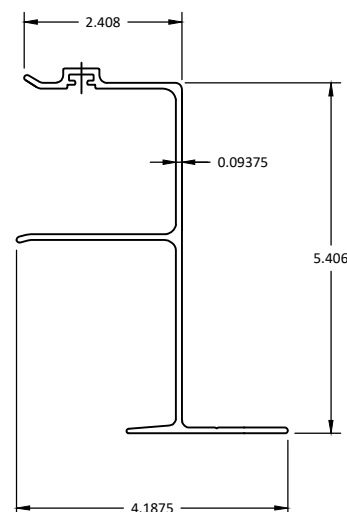
13 1" H-TRACK
ALUMINUM 6061-T6



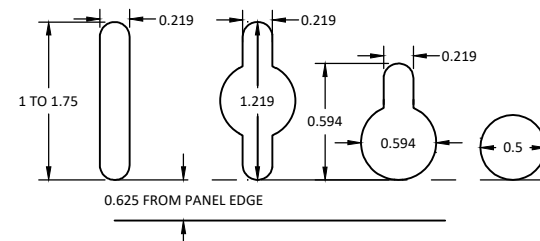
14 2" H-TRACK
ALUMINUM 6061-T6



15 3" H-TRACK
ALUMINUM 6061-T6



16 KEYHOLE DETAIL OPTIONS
ALT. FIELD DRILL 3/8" OR 5/8" HOLE W/ KEYHOLE WASHER



ULTRATEK
WORLDWIDE

3801 N. WASHINGTON BLVD
SARASOTA, FLORIDA 34234
PH: (941) 351-6700

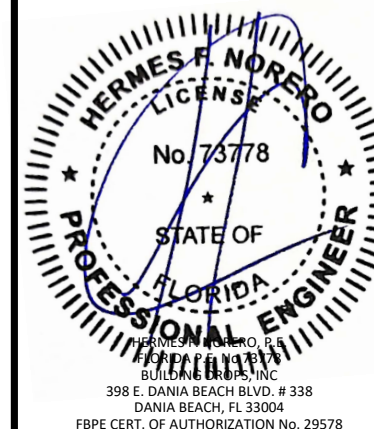
TITLE: CLEARTEK STORM PANEL SYSTEM
(HVHZ) (IMPACT)
COMPONENTS

PREPARED BY:
BUILDING DROPS, INC.
398 E. DANIA BEACH BLVD., STE. 338
DANIA BEACH, FL 33004
PH: (954) 359-8478
FAX: (954) 474-4738
WEB: www.buildingdrops.com



REMARKS	BY	DATE

THE INSTALLATION DETAILS DESCRIBED HEREIN ARE GENERIC AND MAY NOT REFLECT ACTUAL CONDITIONS FOR A SPECIFIC SITE. IF SITE CONDITIONS CAUSE INSTALLATION TO DEVIATE FROM THE REQUIREMENTS DETAILED HEREIN, A LICENSED ENGINEER OR ARCHITECT SHALL PERFORM SITE SPECIFIC DOCUMENTS FOR USE WITH THIS DOCUMENT.



FL #: **FL17733**

DATE: **06.26.23**

DWG. BY: **MG** CHK. BY: **HFN**

SCALE: **NTS**

DWG. #: **UTW001**

SHEET:

12

OF 12