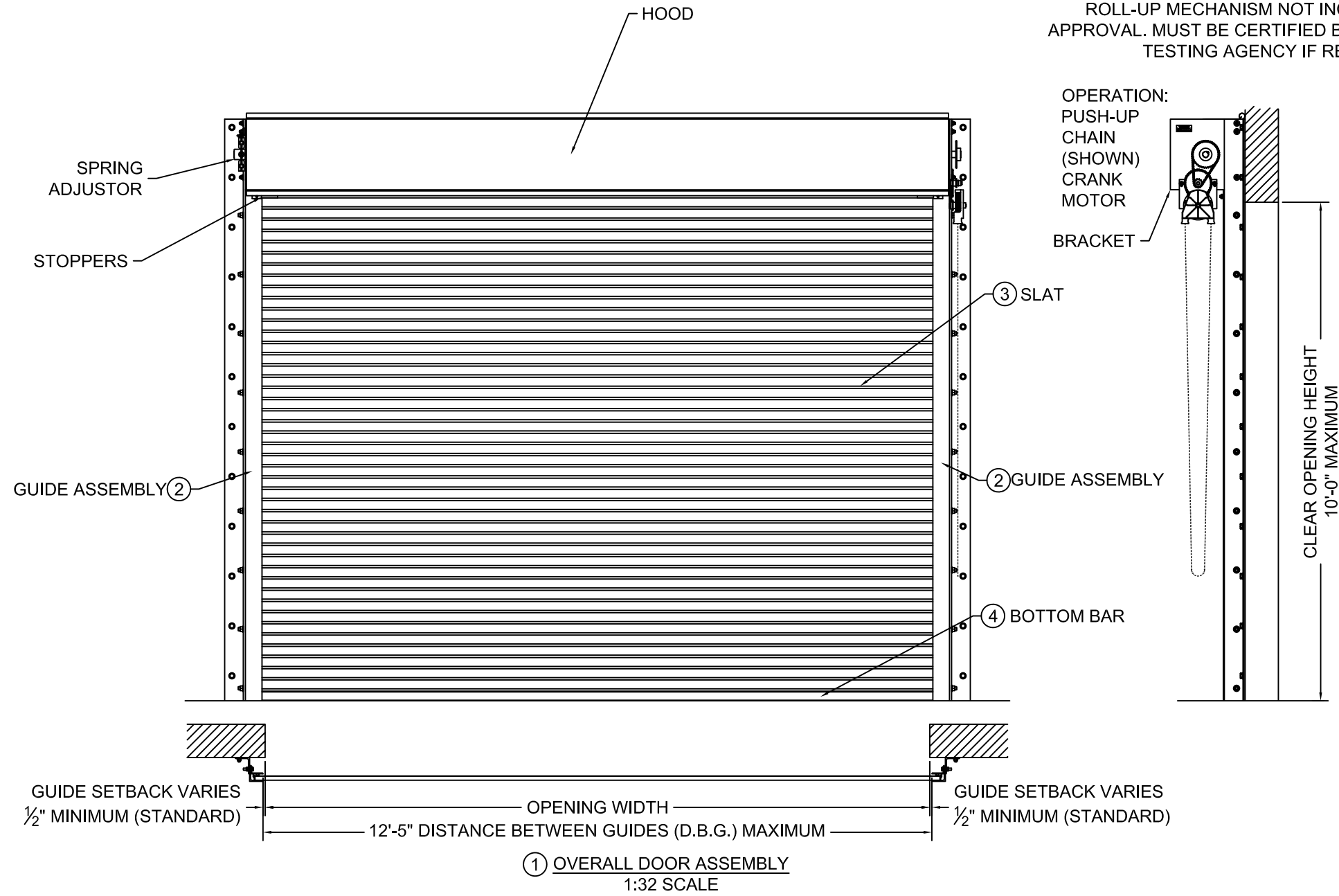


L'TR	REVISION	DATE	BY	E.C.O.
*	ORIGINAL ISSUE	06/24/14	TJE	*

ROLL-UP MECHANISM NOT INCLUDED IN THIS APPROVAL. MUST BE CERTIFIED BY AN INDEPENDENT TESTING AGENCY IF REQUIRED.



NOTES:

- THIS ROLL-UP DOOR SYSTEM IS DESIGNED IN ACCORDANCE WITH THE FLORIDA BUILDING CODE, AS A LARGE MISSILE IMPACT RESISTANT SYSTEM.
- POSITIVE AND NEGATIVE DESIGN PRESSURE CALCULATIONS SHALL BE PERFORMED FOR SPECIFIC JOBS IN ACCORDANCE WITH ASCE 7 *MINIMUM DESIGN LOADS FOR BUILDINGS AND OTHER STRUCTURES*. WIND LOADS DETERMINED FOR OPENINGS SHALL BE LESS THAN OR EQUAL TO DOOR DESIGN PRESSURES NOTED BELOW.  
 POSITIVE DESIGN LOAD = 65 PSF  
 NEGATIVE DESIGN LOAD = 65 PSF
- THE DETAILS AND SPECIFICATIONS SHOWN HEREIN REPRESENT THE PRODUCTS TESTED FOR UNIFORM STATIC AIR PRESSURE IN CONFORMANCE WITH DADE COUNTY PROTOCOLS TAS 201, 202 AND 203.
- TESTING PERFORMED BY ARCHITECTURAL TESTING, INC. (YORK, PENNSYLVANIA) TEST REPORT No. D2662.01-109-18.
- ALL WELDING SHALL BE PERFORMED BY QUALIFIED WELDERS IN ACCORDANCE WITH AWS SPECIFICATIONS, LATEST EDITION. ALL WELDING ELECTRODES SHALL CONFORM TO AWS A5.1, GRADE E-70. MINIMUM WELDING PROCESS SHALL BE ARC WELDING AWS E7014 OR MIG WELDING AWS ER70S-6.
- ANCHOR NOTES:  
 A. EMBEDMENT DEPTH DOES NOT INCLUDE STUCCO FINISH.  
 B. ANCHORS SHALL BE INSTALLED IN ACCORDANCE WITH MANUFACTURERS SPECIFICATIONS.
- DOOR MAY BE INSTALLED ON THE INSIDE OR OUTSIDE OF AN EXTERIOR WALL.
- BOTH 0.0296 AND 0.0405 THICK SLAT MATERIAL HAVE BEEN TESTED AND QUALIFIED FOR 65 PSF DESIGN LOAD. 0.0296 THICK SLAT MATERIAL HAS BEEN TESTED AND QUALIFIED FOR 50 FPS LARGE MISSILE IMPACT RESISTANCE. 0.0405 THICK SLAT MATERIAL HAS BEEN TESTED AND QUALIFIED FOR 80 FPS LARGE MISSILE IMPACT RESISTANCE.
- FOAMED IN PLACE INSULATION, TESTED IN ACCORDANCE WITH ASTM E-84 AND D-1929.

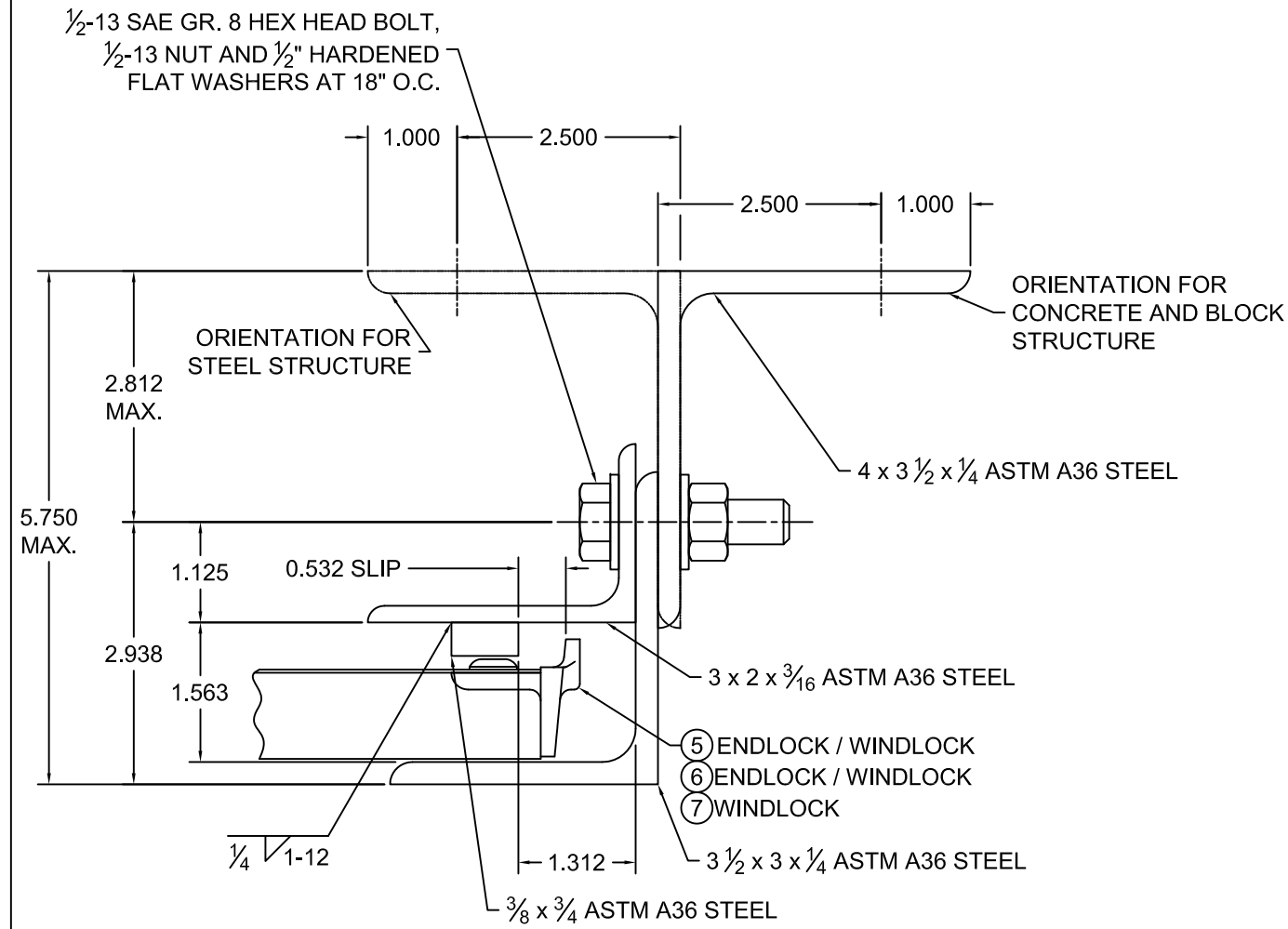
GUIDE SETBACK VARIES 1/2" MINIMUM (STANDARD)      OPENING WIDTH      GUIDE SETBACK VARIES 1/2" MINIMUM (STANDARD)

12'-5" DISTANCE BETWEEN GUIDES (D.B.G.) MAXIMUM

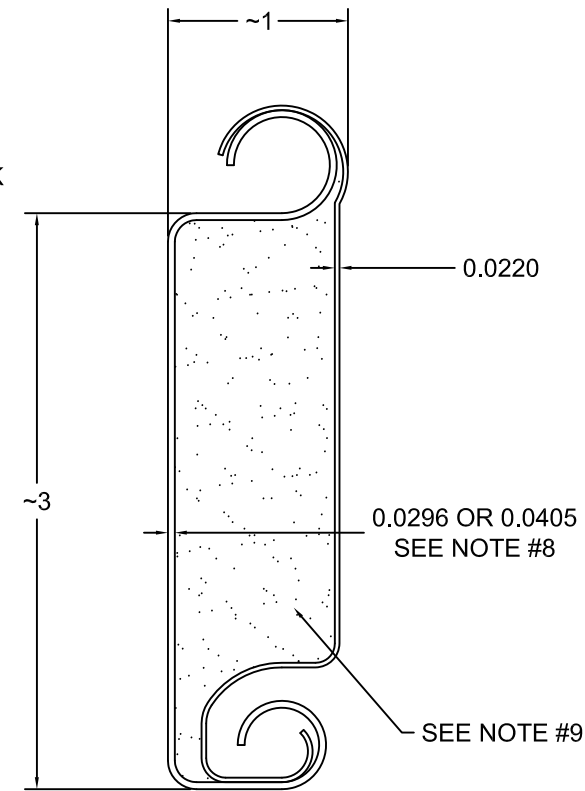
① OVERALL DOOR ASSEMBLY  
1:32 SCALE

	24 ELMWOOD AVE 1901 S. LITCHFIELD RD MOUNTAINTOP, PA GOODYEAR, AZ 800 TULIP DRIVE GASTONIA, NC P: 800.233.8366 F: 800.526.0841 E: ADS@CORNELLIRON.COM	Unless otherwise specified, dimensions are in inches & tolerances are:  0.000 = +/- 0.031 FRACTIONAL = +/- 1/32 ANGLES = +/- 1/2 DEG
	TITLE: <b>FLORIDA APPROVAL 12'-5" WIDE 65 PSF INSULATED ROLLING STEEL DOOR</b>	DRAWN BY: <b>TJE</b> SIZE: <b>B</b> SCALE: <b>AS NOTED</b> SHEET: <b>1/4</b> DWG NO: <b>ES-16-73-CIW</b>

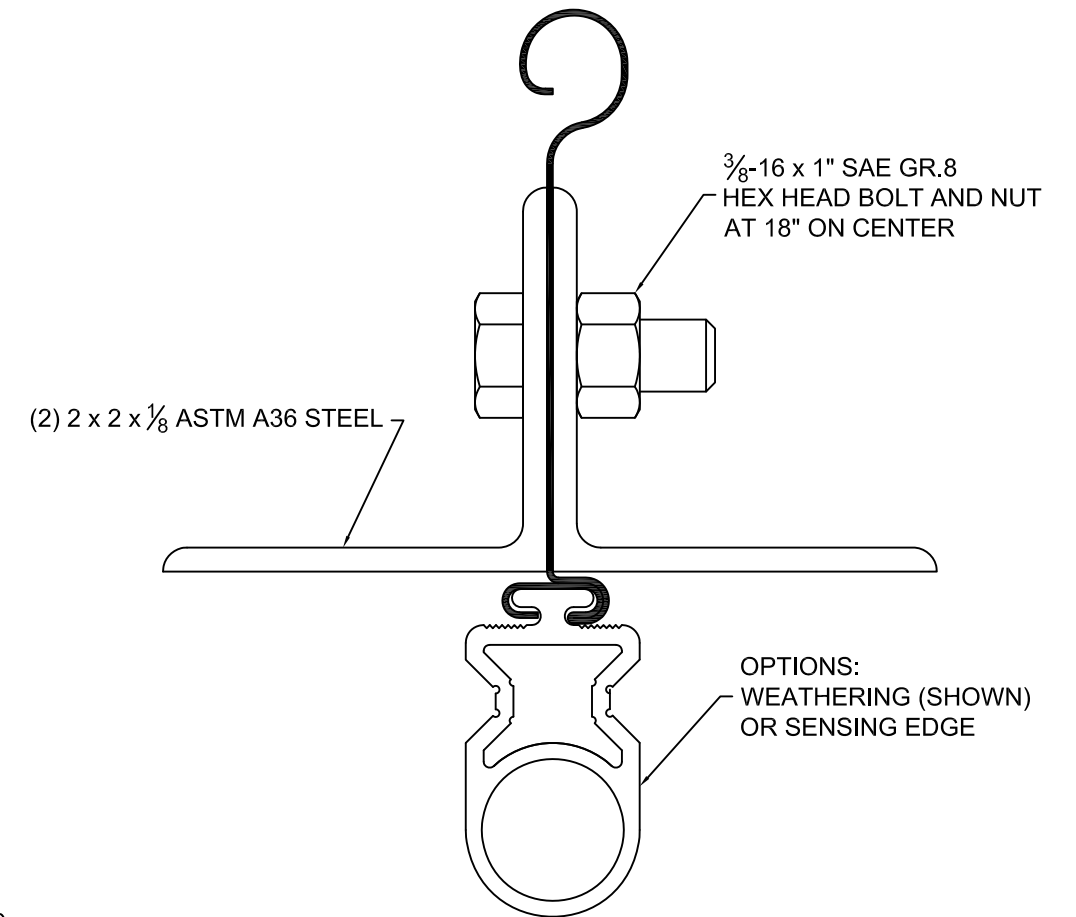
L'TR	REVISION	DATE	BY	E.C.O.
*	ORIGINAL ISSUE	06/24/14	TJE	*



② GUIDE ASSEMBLY DETAIL  
1:2 SCALE



③ SLAT DETAIL  
TYPICAL SECTION  
ASTM A653 STRUCTURAL STEEL GRADE 40 G40  
FULL SCALE



④ BOTTOM BAR DETAIL  
TYPICAL SECTION  
FULL SCALE

**CORNELL**  
SAFE AND SECURE

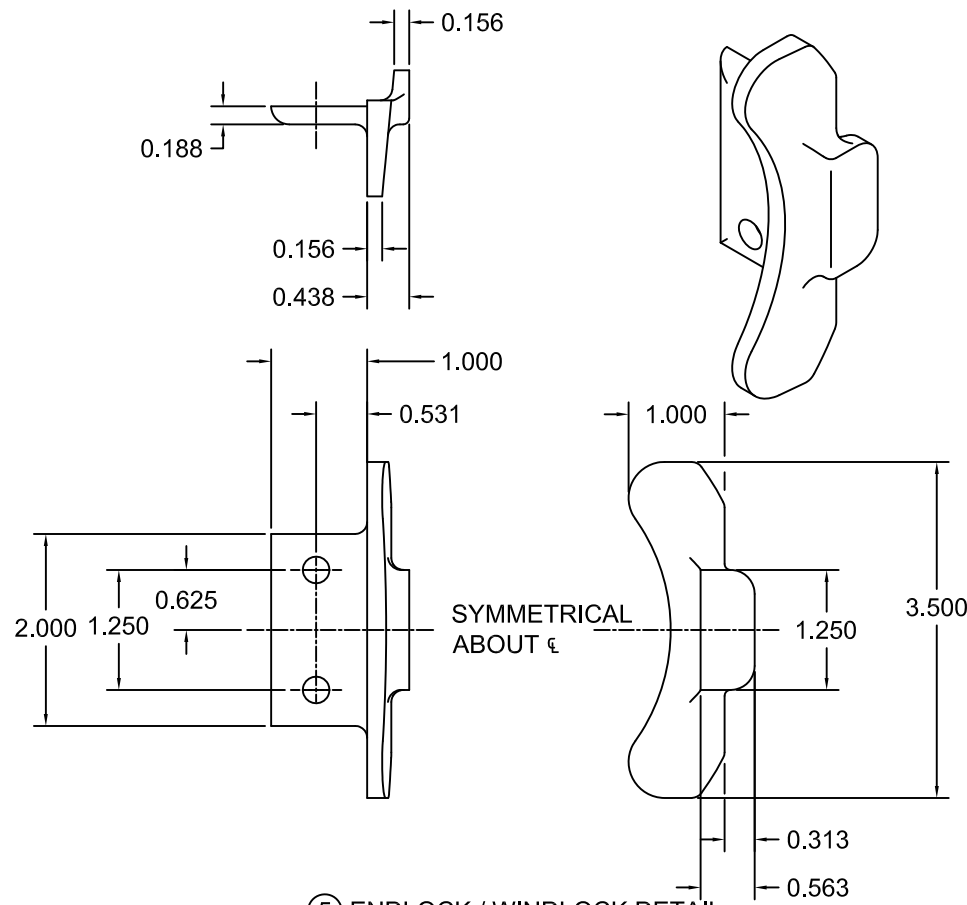
24 ELMWOOD AVE 1901 S. LITCHFIELD RD  
MOUNTAINTOP, PA GOODYEAR, AZ  
800 TULIP DRIVE  
GASTONIA, NC  
P: 800.233.8366  
F: 800.526.0841  
E: ADS@CORNELLIRON.COM

Unless otherwise specified,  
dimensions are in inches &  
tolerances are:

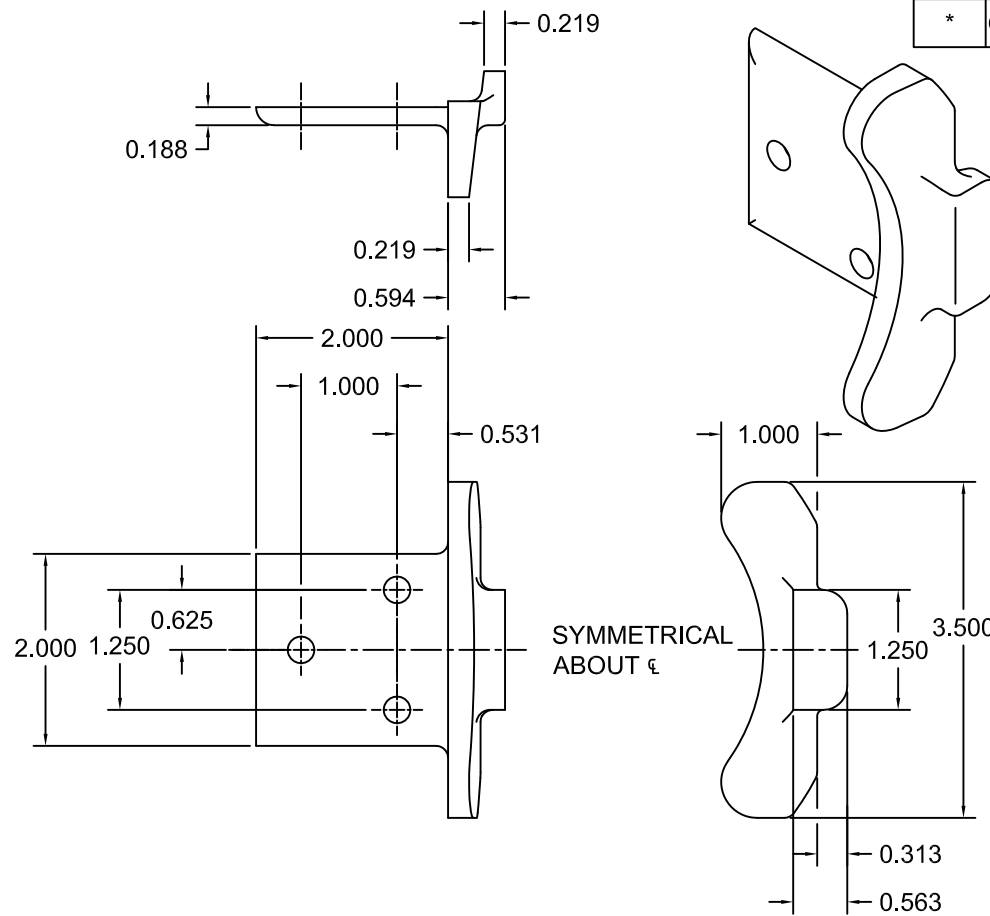
0.000 = +/- 0.031  
FRACTIONAL = +/- 1/32  
ANGLES = +/- 1/2 DEG

TITLE: <b>FLORIDA APPROVAL 12'-5" WIDE 65 PSF INSULATED ROLLING STEEL DOOR</b>	DRAWN BY: <b>TJE</b>	SIZE: <b>B</b>	SCALE: <b>AS NOTED</b>	SHEET: <b>2/4</b>
	DWG NO: <b>ES-16-73-CIW</b>			

L'TR	REVISION	DATE	BY	E.C.O.
*	ORIGINAL ISSUE	06/24/14	TJE	*



⑤ **ENDLOCK / WINDLOCK DETAIL**  
 (USED WITH 0.0296 SLAT MATERIAL)  
 FERRITIC MALLEABLE IRON PER ASTM A47 - GRADE 32510  
 OR DUCTILE IRON PER ASTM A536 GRADE 65-45-12. GALVANIZED  
 IN ACCORDANCE WITH ASTM A153, G90 ZINC-COATING.  
 1/2 SCALE

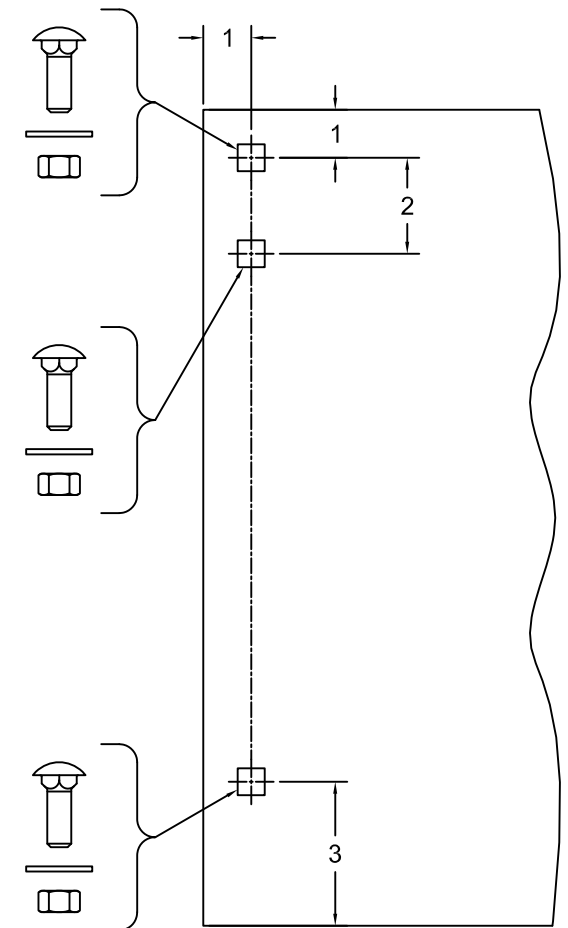


⑥ **ENDLOCK / WINDLOCK DETAIL**  
 (USED WITH 0.0405 SLAT MATERIAL)  
 CAST MALLEABLE IRON ASTM A47, GRADE 32510, OR  
 DUCTILE IRON PER ASTM A536 GRADE 65-45-12, GALVANIZED IN ACCORDANCE WITH  
 ASTM A123, GRADE 85 ZINC-COATING  
 1/2 SCALE

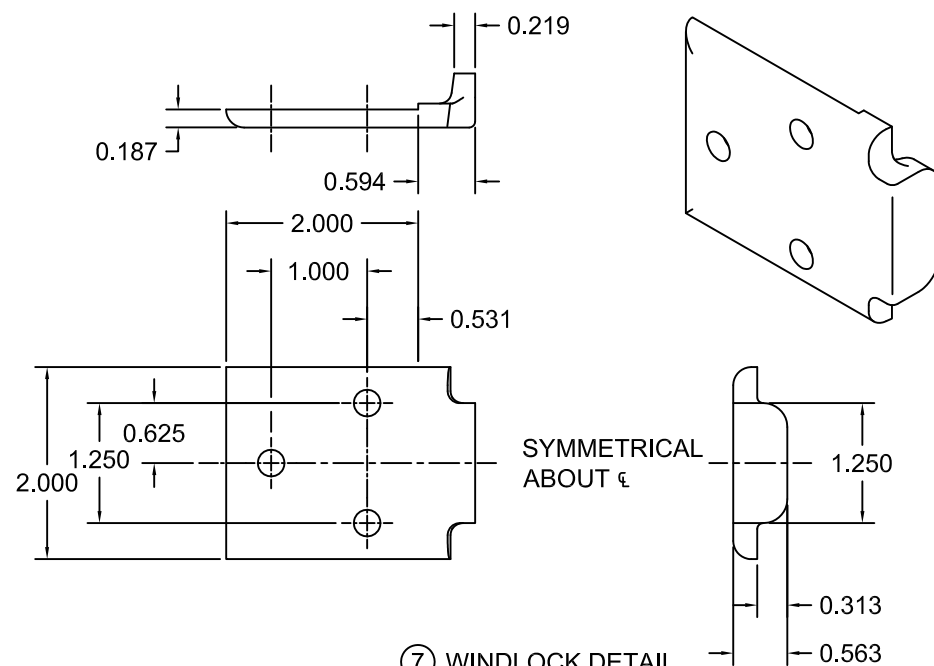
1/2-13 x 1 1/2"  
 CARRIAGE BOLT GR.5  
 1/2" FLAT WASHER  
 1/2-13 HEX NUT

1/2-13 x 1 1/2"  
 CARRIAGE BOLT GR.5  
 1/2" FLAT WASHER  
 1/2-13 HEX NUT  
 THIS FASTENER ON 17"  
 AND LARGER COILS

1/2-13 x 1 1/2"  
 CARRIAGE BOLT GR.5  
 1/2" FLAT WASHER  
 1/2-13 HEX NUT



⑧ **BRACKET MOUNTING DETAIL**  
 0.172 MIN. THICKNESS



⑦ **WINDLOCK DETAIL**  
 (USED WITH 0.0405 SLAT MATERIAL)  
 CAST MALLEABLE IRON ASTM A47, GRADE 32510, OR  
 DUCTILE IRON PER ASTM A536 GRADE 65-45-12, GALVANIZED IN  
 ACCORDANCE WITH ASTM A123, GRADE 85 ZINC-COATING  
 1/2 SCALE

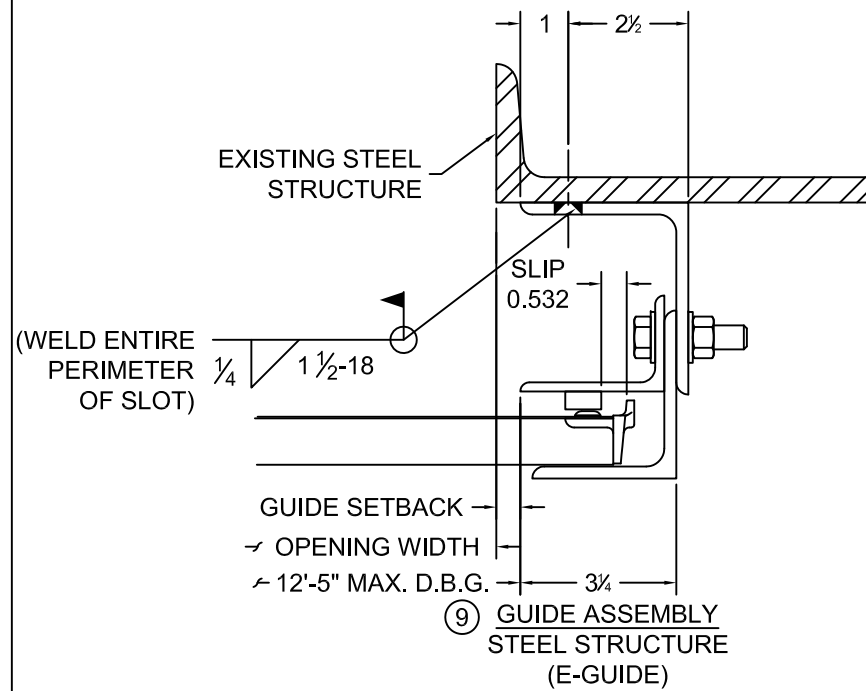
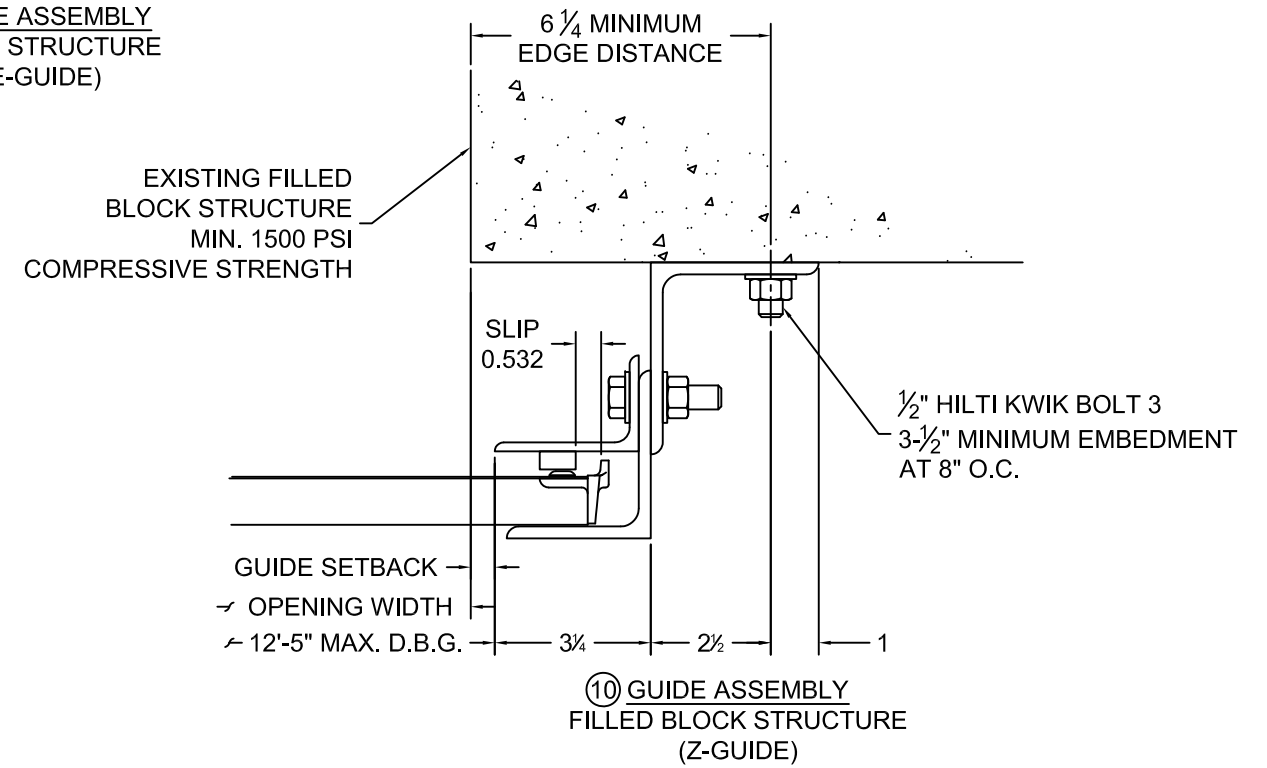
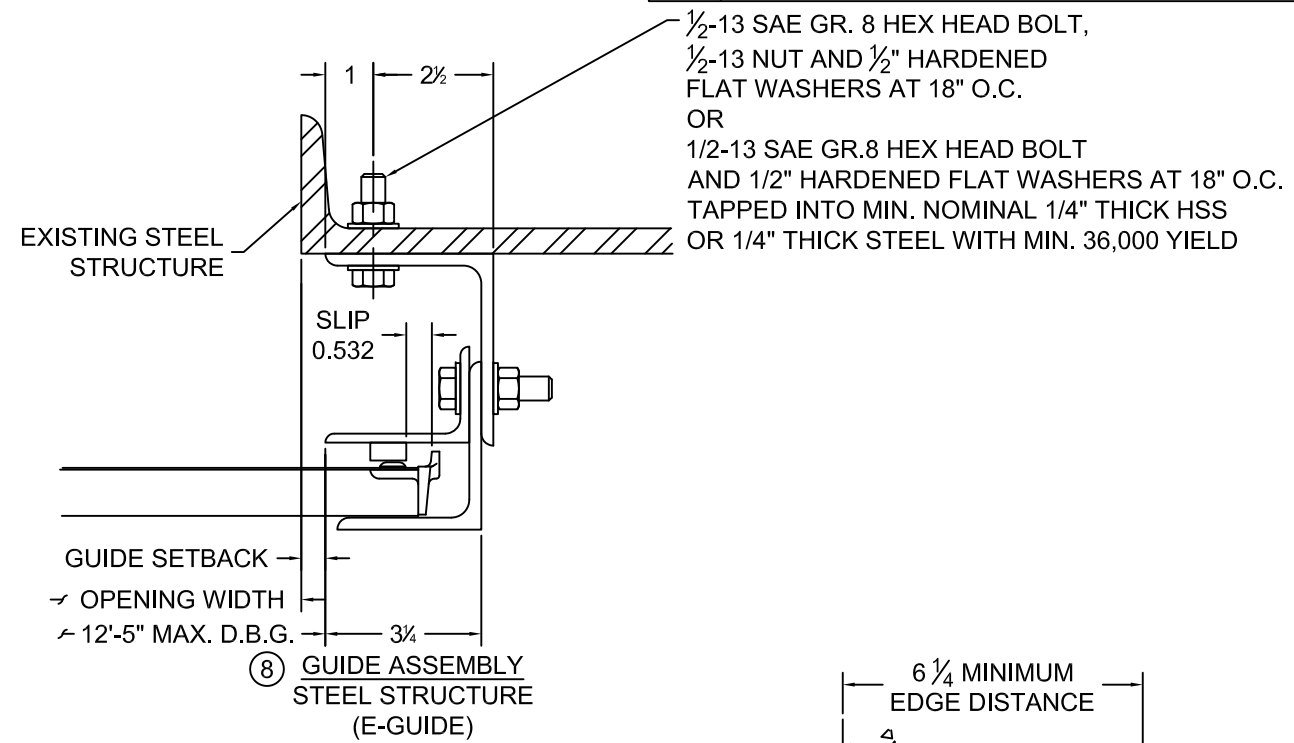
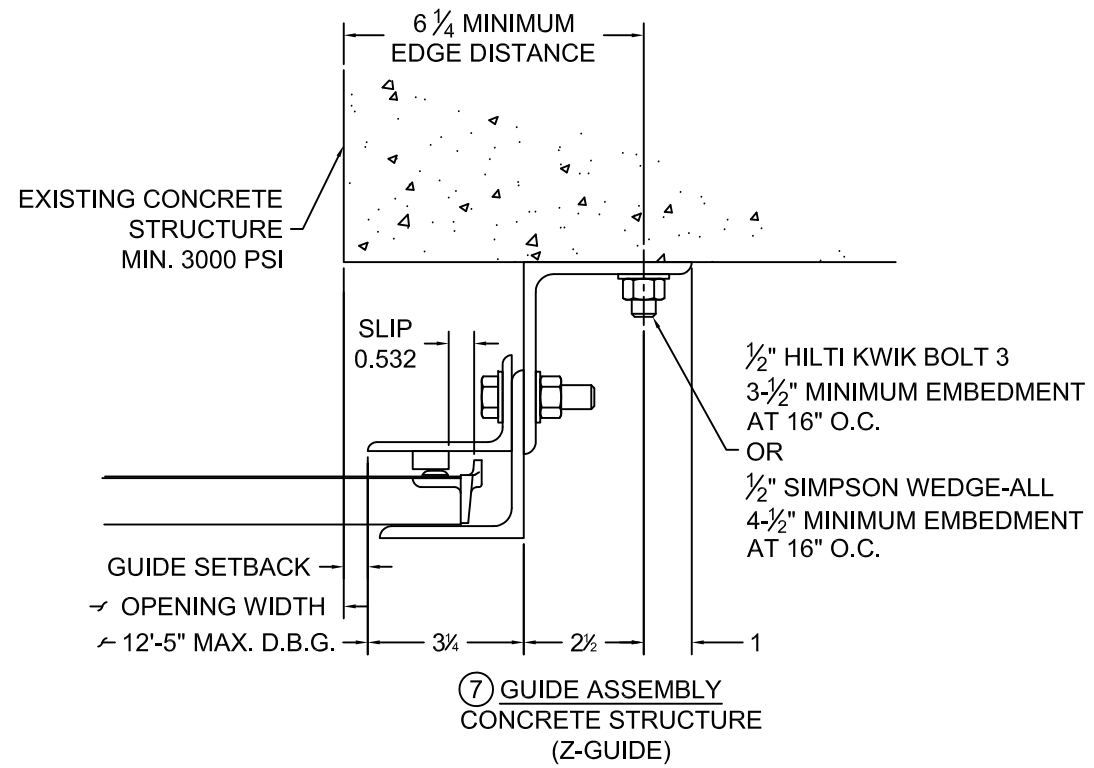
**CORNELL**  
 SAFE AND SECURE

24 ELMWOOD AVE 1901 S. LITCHFIELD RD  
 MOUNTAINTOP, PA GOODYEAR, AZ  
 800 TULIP DRIVE  
 GASTONIA, NC  
 P: 800.233.8366  
 F: 800.526.0841  
 E: ADS@CORNELLIRON.COM

Unless otherwise specified,  
 dimensions are in inches &  
 tolerances are:  
 0.000 = +/- 0.031  
 FRACTIONAL = +/- 1/32  
 ANGLES = +/- 1/2 DEG

TITLE: <b>FLORIDA APPROVAL 12'-5" WIDE 65 PSF INSULATED ROLLING STEEL DOOR</b>	DRAWN BY: <b>TJE</b>	SIZE: <b>B</b>	SCALE: <b>AS NOTED</b>	SHEET: <b>3/4</b>
	DWG NO: <b>ES-16-73-CIW</b>			

L'TR	REVISION	DATE	BY	E.C.O.
*	ORIGINAL ISSUE	06/24/14	TJE	*



**CORNELL**  
SAFE AND SECURE

24 ELMWOOD AVE 1901 S. LITCHFIELD RD  
MOUNTAINTOP, PA GOODYEAR, AZ  
800 TULIP DRIVE  
GASTONIA, NC  
P: 800.233.8366  
F: 800.526.0841  
E: ADS@CORNELLIRON.COM

Unless otherwise specified,  
dimensions are in inches &  
tolerances are:  
  
0.000 = +/- 0.031  
FRACTIONAL = +/- 1/32  
ANGLES = +/- 1/2 DEG

TITLE: <b>FLORIDA APPROVAL 12'-5" WIDE 65 PSF INSULATED ROLLING STEEL DOOR</b>	DRAWN BY: <b>TJE</b>	SIZE: <b>B</b>	SCALE: <b>AS NOTED</b>	SHEET: <b>4/4</b>
	DWG NO: <b>ES-16-73-CIW</b>			