

This product has been evaluated per ANSI/DASMA 108 for static air pressure.

This product has been evaluated per ANSI/DASMA 115 for large missile impact and cyclic wind pressure.

Model Number								
PAN C2011 SERIES PAN C2015 SERIES PAN C2411 SERIES PAN C2415 SERIES PAN C2480 SERIES PAN C2511 SERIES								
Door Widths Up To	Design Pressures		End Stiles	Minimum Center Stiles (PAN / Full View)		Minimum Center Hinges (PAN / Full View)		Impact Resistant
	+ psf	- psf						
8'-2"	48.0	-52.0	Single	1 / 1	1	1 / 1	1	YES
9'-2"	48.0	-52.0	Single	1 / 1	1	1 / 1	1	YES
10'-2"	48.0	-52.0	Single	2 / 2	2	2 / 2	2	YES

This product is designed and sold by PSF. The AHJ or Engineer of Record is responsible for determining the PSF required for any given site.

Jamb bracket quantities shown are for use with grade 2 or better southern pine jambs.

Supporting structural elements are to be designed by a professional engineer for specific wind loads.

Door Height	Total # of Sections	Total # of Struts		Jamb Brkts per Side
		E Strut	Cap Strut	
6'-0"	3	3	2	4
6'-3"	4	3	3	4
6'-6"	4	3	3	4
6'-9"	4	3	3	4
7'-0"	4	3	3	5
7'-3"	4	3	3	5
7'-6"	4	3	3	5
7'-9"	4	3	3	5
8'-0"	4	3	3	5

Maximum section height is 24 in.

Maximum door height is 16 ft.


All doors, even those above the tested height, are available with jamb brackets or commercial full angle. The maximum spacing of the jamb brackets/track clips should be maintained.

NOTICE: These drawings are a supplement to the installation instructions for a standard door and only covers those procedures that vary from standard door installation. If these specific procedures are not followed, the door may not perform as designed.

NOTICE: Any full view section of this door may be replaced with a solid section. Full view sections can be used anywhere except for the bottom section. See STRUT CONFIGURATION on page 3 of 4 for strut locations of different door configurations.

IMPACT RESISTANT

FL #16650.11

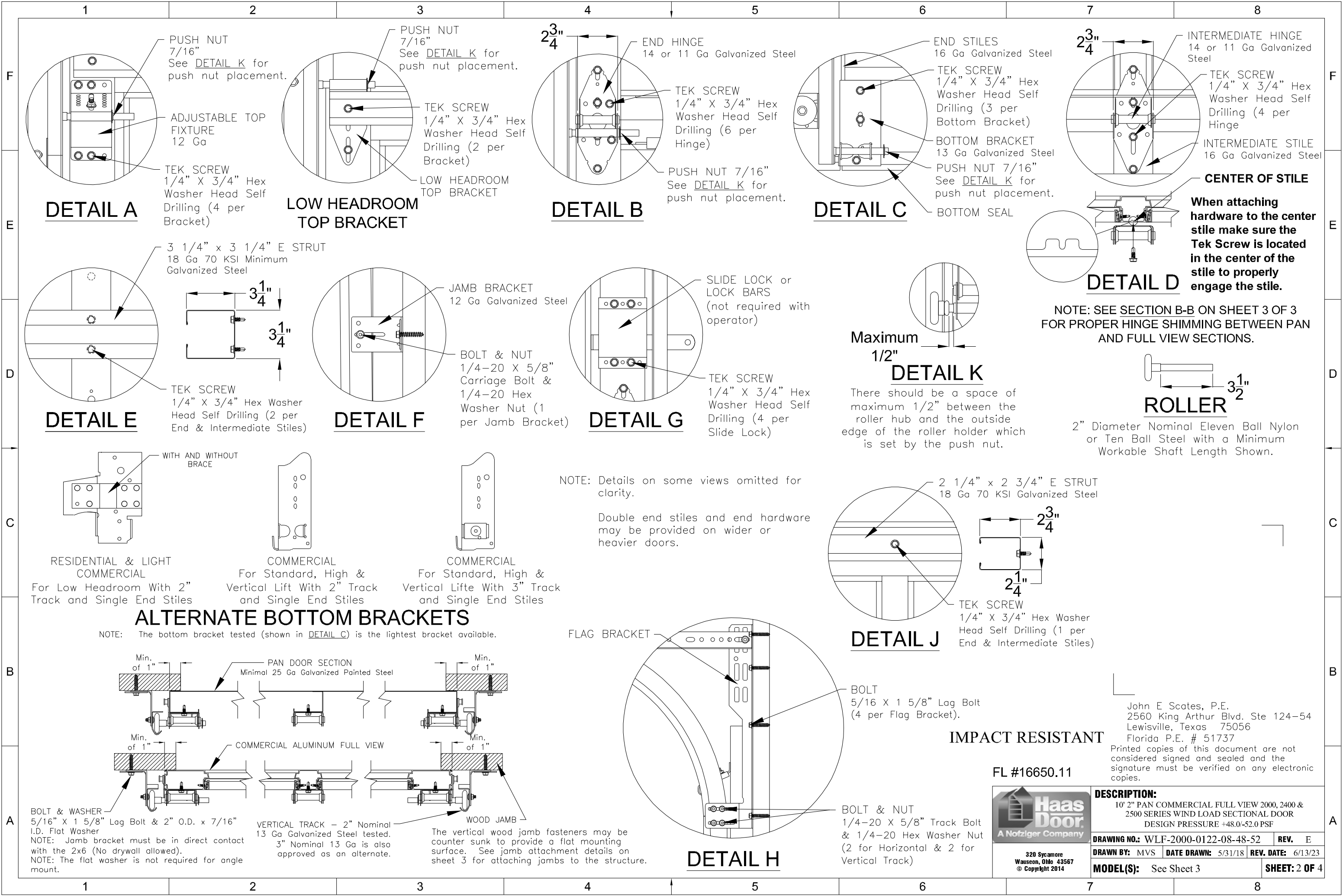


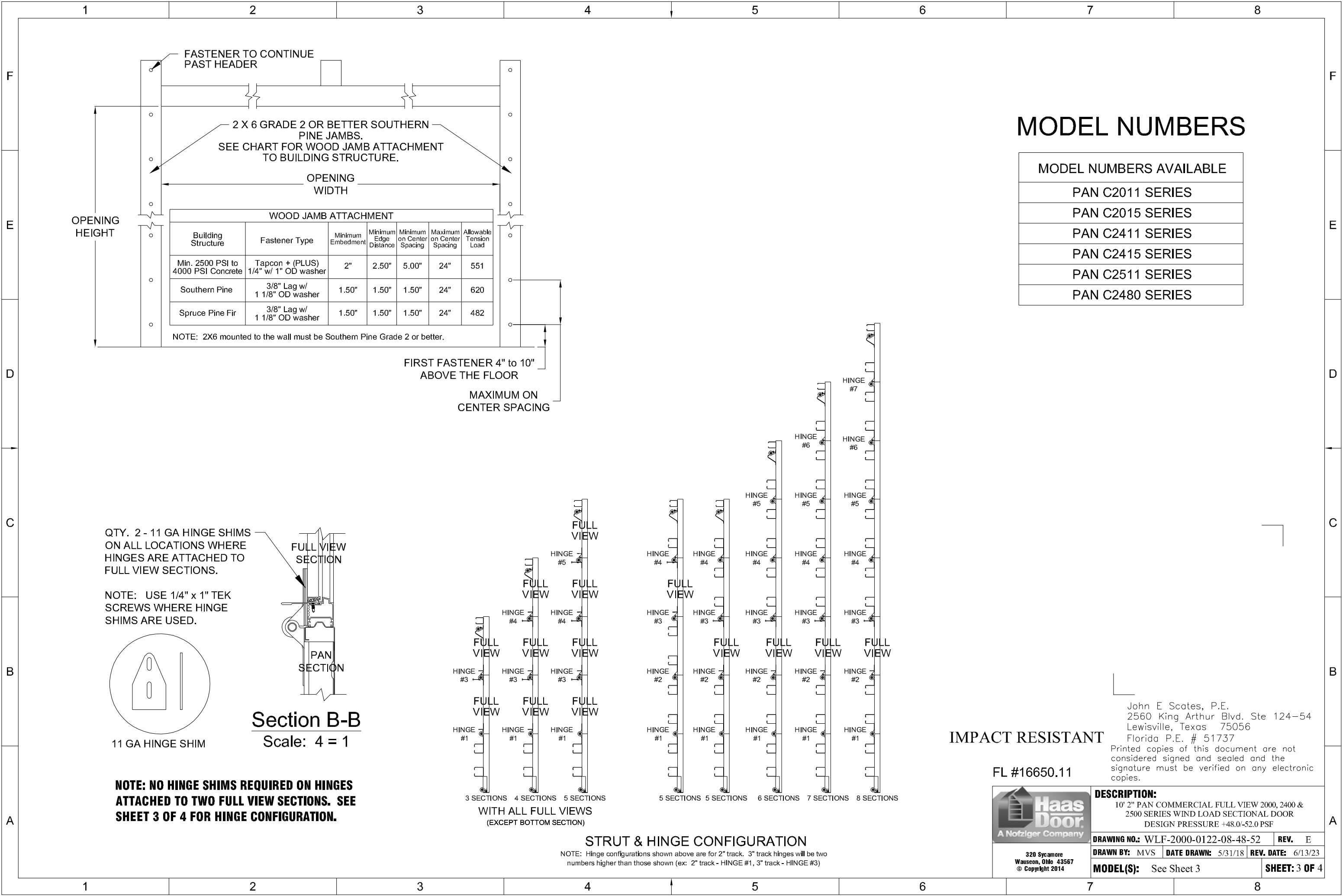
220 Sycamore
Wauseon, Ohio 43567
© Copyright 2014

DESCRIPTION:
10' 2" PAN COMMERCIAL FULL VIEW 2000, 2400 & 2500 SERIES WIND LOAD SECTIONAL DOOR
DESIGN PRESSURE +48.0/-52.0 PSF

DRAWING NO.: WLF-2000-0122-08-48-52	REV. E	
DRAWN BY: MVS	DATE DRAWN: 5/31/18	REV. DATE: 6/13/23
MODEL(S): See Sheet 3		SHEET: 1 OF 4

NOTE: To install the cap strut, first center it horizontally with the built-in strut. Next tap on the flat end until it is fully engaged with the built-in strut. Fasten the two together using the provided track bolts. A bolt should be used at each hinge location and at the end of each cap strut. The end bolts should be located a minimum of 1" from the end of the cap strut. There is a groove in the cap strut that should be used as a guide for drilling the holes.






MODEL NUMBERS

MODEL NUMBERS AVAILABLE
PAN C2011 SERIES
PAN C2015 SERIES
PAN C2411 SERIES
PAN C2415 SERIES
PAN C2511 SERIES
PAN C2480 SERIES

IMPACT RESISTANT

FL #16650.11

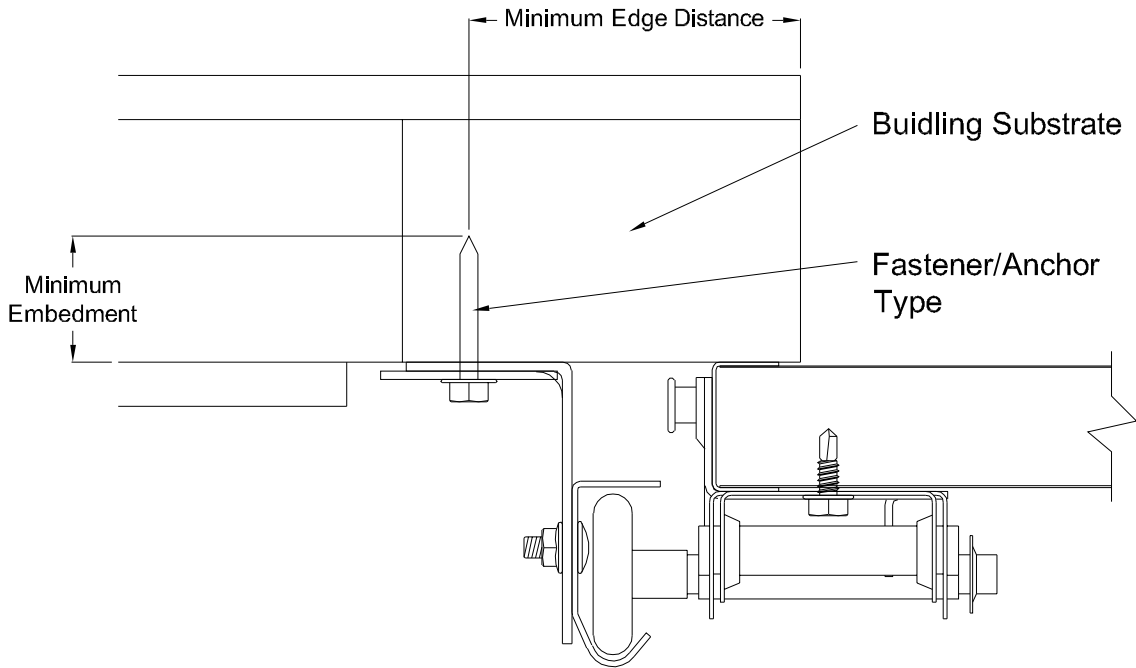


Haas Door
A Nofziger Company

320 Sycamore
Wauseon, Ohio 43567
© Copyright 2014

DESCRIPTION: 10' 2" PAN COMMERCIAL FULL VIEW 2000, 2400 & 2500 SERIES WIND LOAD SECTIONAL DOOR DESIGN PRESSURE +48.0/-52.0 PSF		
DRAWING NO.: WLF-2000-0122-08-48-52	REV. E	
DRAWN BY: MVS	DATE DRAWN: 5/31/18	REV. DATE: 6/13/23
MODEL(S): See Sheet 3		SHEET: 3 OF 4

John E. Scates, P.E.
2560 King Arthur Blvd. Ste 124-54
Lewisville, Texas 75056
Florida P.E. # 51737
Printed copies of this document are not considered signed and sealed and the signature must be verified on any electronic copies.



Direct Mounting Detail

Bracket Mount Shown, Reverse and Continuous Angle Mount, Reverse and Continuous Angle Clip Mount Also Approved As Alternate.

DIRECT MOUNTING					
Building Substrate	Fastener Type	Minimum Embedment	Minimum Fastener Length	Minimum Edge Distance	Minimum on Center Spacing
Southern Pine (SYP)	5/16" Dia. Lag Screw w/1-1/8" OD Flat Washer (shall conform to ANSI/ASME standard B18.2.1)	-	1-5/8"	1/2"	-
Spruce-Pine-Fur (SPF)	5/16" Dia. Lag Screw w/1-1/8" OD Flat Washer (shall conform to ANSI/ASME standard B18.2.1)	-	2-1/4"	1/2"	-
Min. 2500 PSI Concrete	3/8" Dia. Ankr-Tite CCAT w/1-1/8" OD Flat Washer (by Wej-It Fastening Systems)	2-3/8"	-	2-1/2"	6"
Min. 2500 PSI Concrete	1/4" Dia. Tapcon+ by ITW w/1-1/8" OD Flat Washer	2"	-	2-1/2"	5"
Min. 2500 PSI Concrete	1/4" Dia. Wedge-Bolt+ by Powers Fasteners w/1-1/8" OD Flat Washer	1-3/4"	-	2-1/2"	5"
Min. 2500 PSI Concrete	1/4" Dia. Red Head TruBolt wedge anchor by ITW w/1-1/8" OD Flat Washer	1-3/4"	-	2-1/2"	5"
1/8" GA Steel Minimum	5/16"-12 Tek Self-Drilling Screw w/1-1/8" OD Flat Washer	-	1"	-	-
3/16" GA Steel	Fillet Weld	See DASMA Technical Data Sheet TDS-161, section G			

NOTE: Doors are available with jamb brackets or commercial full angle. In either case the the maximum spacing noted on sheet 1 should be maintained for the brackets, clips and fasteners for direct mount.

IMPACT RESISTANT

FL #16650.11



320 Sycamore
Wauseon, Ohio 43567
© Copyright 2014

John E. Scates, P.E.
2560 King Arthur Blvd. Ste 124-54
Lewisville, Texas 75056
Florida P.E. # 51737
Printed copies of this document are not considered signed and sealed and the signature must be verified on any electronic copies.

DESCRIPTION: 10' 2" PAN COMMERCIAL FULL VIEW 2000, 2400 & 2500 SERIES WIND LOAD SECTIONAL DOOR DESIGN PRESSURE +48.0/-52.0 PSF			
DRAWING NO.: WLF-2000-0122-08-48-52		REV. E	
DRAWN BY: MVS	DATE DRAWN: 5/31/18	REV. DATE: 6/13/23	
MODEL(S): See Sheet 3			SHEET: 4 OF 4