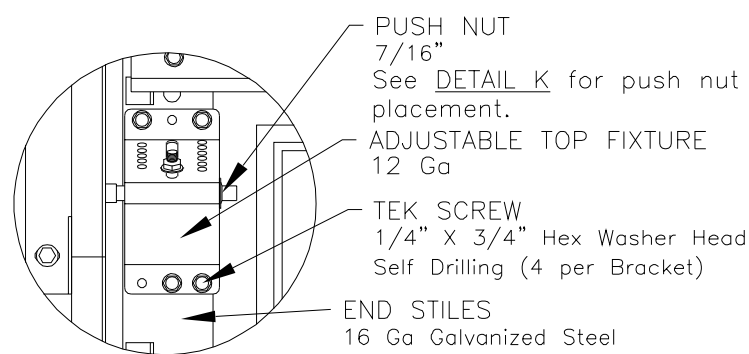
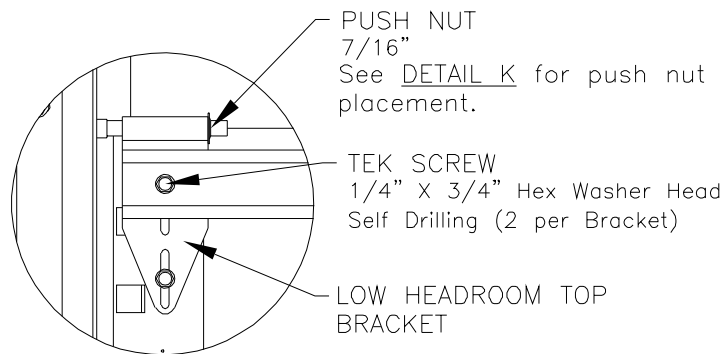


This product has been evaluated per ANSI/DASMA 108 for static air pressure.

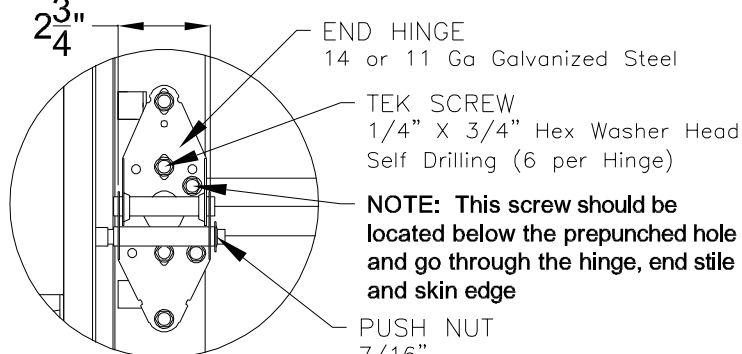
				Model Number						
				PAN C2480 & R2480 SERIES PAN C2481 & R2481 SERIES PAN C2482 & R2482 SERIES PAN R2580 SERIES PAN R2581 SERIES PAN R2582 SERIES		PAN C2410 & R2410 SERIES PAN C2460 & R2460 SERIES PAN C2461 & R2461 SERIES		PAN C2011 SERIES PAN C2015 SERIES PAN C2411 SERIES PAN C2415 SERIES PAN C2511 SERIES		
						PAN C2471 & R2471 SERIES				
						PAN C2472 & R2472 SERIES				
						PAN R2560 SERIES				
						PAN R2561 SERIES				
						PAN R2571 SERIES				
						PAN R2572 SERIES				
Door Widths Up To	Design Pressures		End Stile	Minimum Center		Minimum Center		Minimum Center		Impact Resistant
	+ psf	- psf		Stiles	Hinges	Stiles	Hinges	Stiles	Hinges	
10'-2"	38.0	-42.4	Single	4	2	3	1	3	2	NO
12'-2"	31.7	-35.4	Single	3	2	3	2	3	2	NO
14'-2"	27.2	-30.4	Single	4	4	3	2	5	3	NO
16'-2"	23.9	-26.7	Single	5	3	5	3	5	3	NO
18'-2"	18.9	-21.1	Single	5	3	5	3	5	3	NO
20'-2"	15.3	-17.1	Single	7	4	7	4	9	5	NO



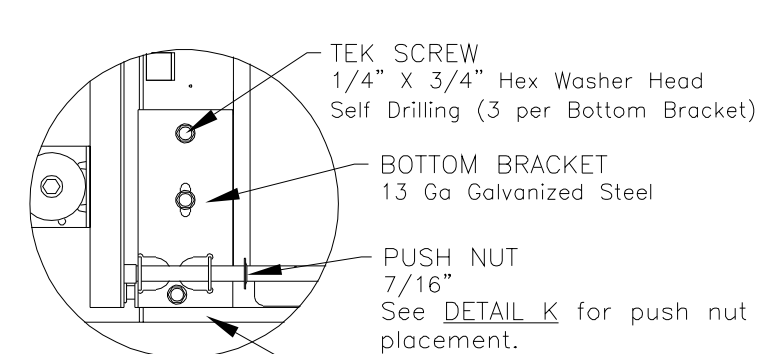
DETAIL A



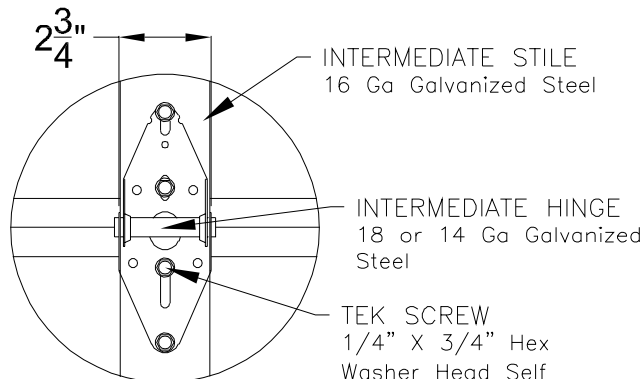
**LOW HEADROOM
TOP BRACKET**



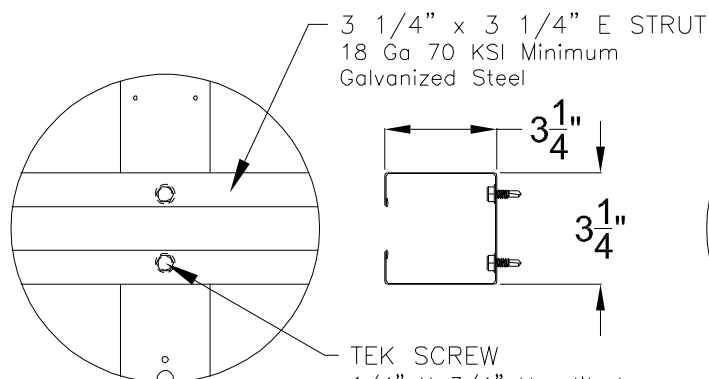
DETAIL B



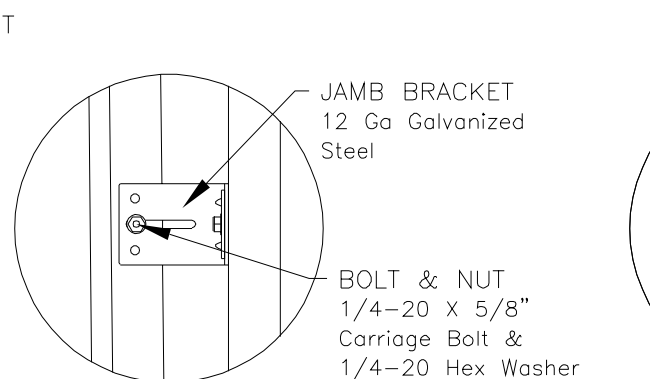
DETAIL C



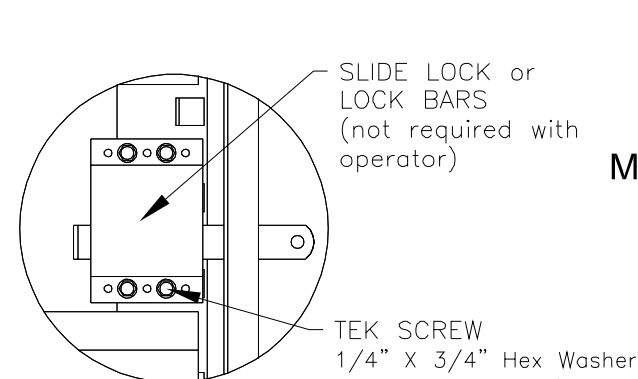
DETAIL D



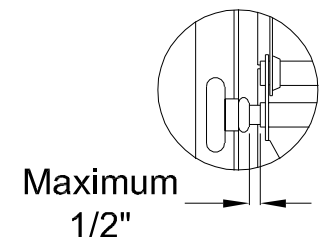
DETAIL E



DETAIL F

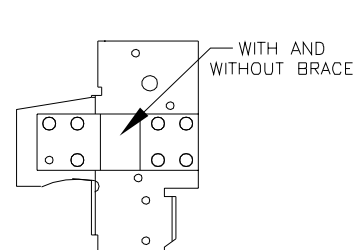


DETAIL G

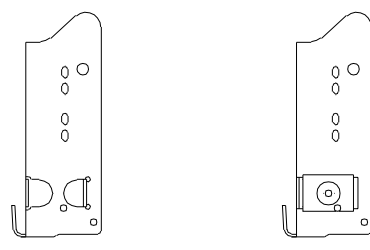


DETAIL K

There should be a space of maximum 1/2" between the roller hub and the outside edge of the roller holder which is set by the push nut.



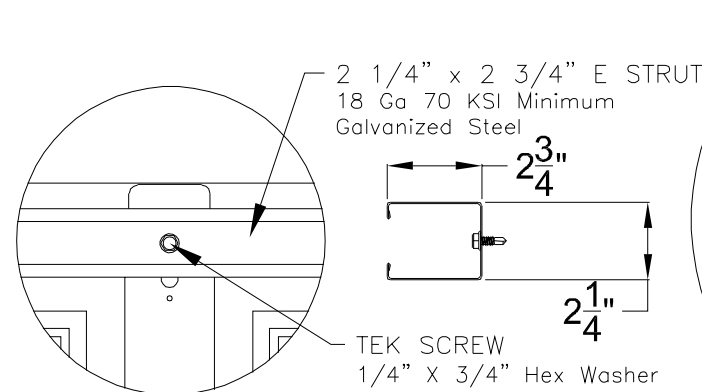
RESIDENTIAL & LIGHT COMMERCIAL For Low Headroom With 2" Track and Single End Stiles



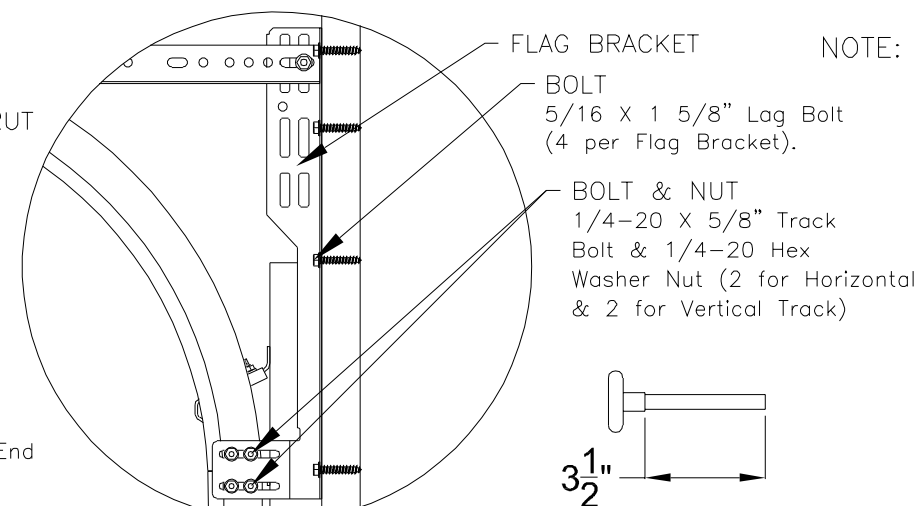
COMMERCIAL For Standard, High & Vertical Lift With 2" Track and Single End Stiles



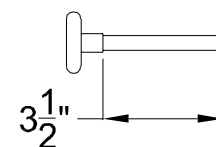
COMMERCIAL For Standard, High & Vertical Lift With 3" Track and Single End Stiles



DETAIL J



DETAIL H



ROLLER

2" Diameter Nominal Eleven Ball Nylon or Ten Ball Steel with a Minimum Workable Shaft Length Shown.

NOTE: Details on some views omitted for clarity.

Double end stiles and end hardware may be provided on wider or heavier doors.

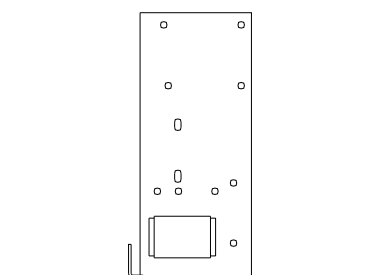
John E. Scates, P.E.
2560 King Arthur Blvd. Ste 124-54
Lewisville, Texas 75056
Florida P.E. # 51737

Printed copies of this document are not considered signed and sealed and the signature must be verified on any electronic copies.

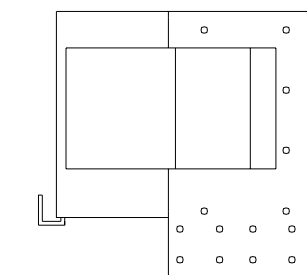
FL #16650.16



DESCRIPTION:			
16" 2" PAN 2000 SERIES W/LITES WIND LOAD SECTIONAL DOOR DESIGN PRESSURE +23.9/-26.7 PSF			
DRAWING NO.:	WL-2000-0194-24-27L	REV.	M
DRAWN BY:	MVS	DATE DRAWN:	8/14/14
MODEL(S):	See Sheet 3	REV. DATE:	8/30/23
			SHEET: 2 OF 4



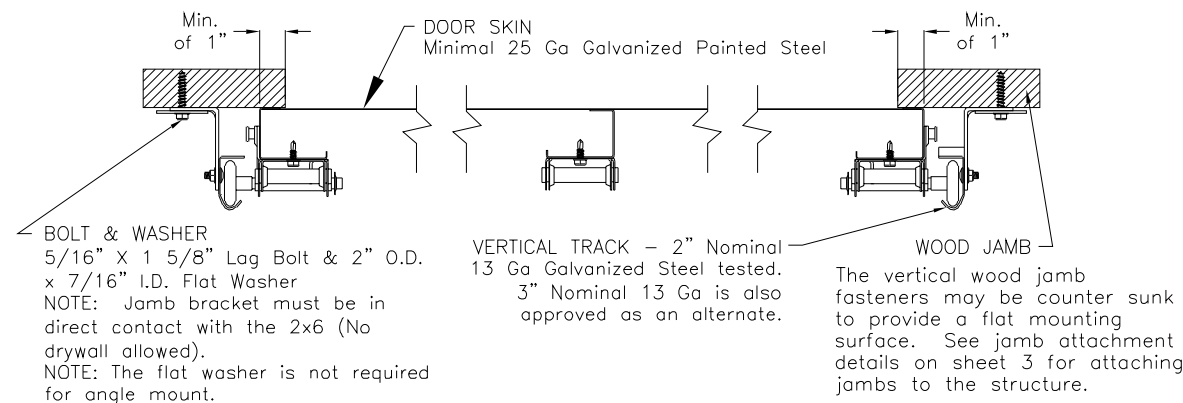
COMMERCIAL HEAVY DUTY For Standard, High & Vertical Lift With 3" Track and Double End Stiles

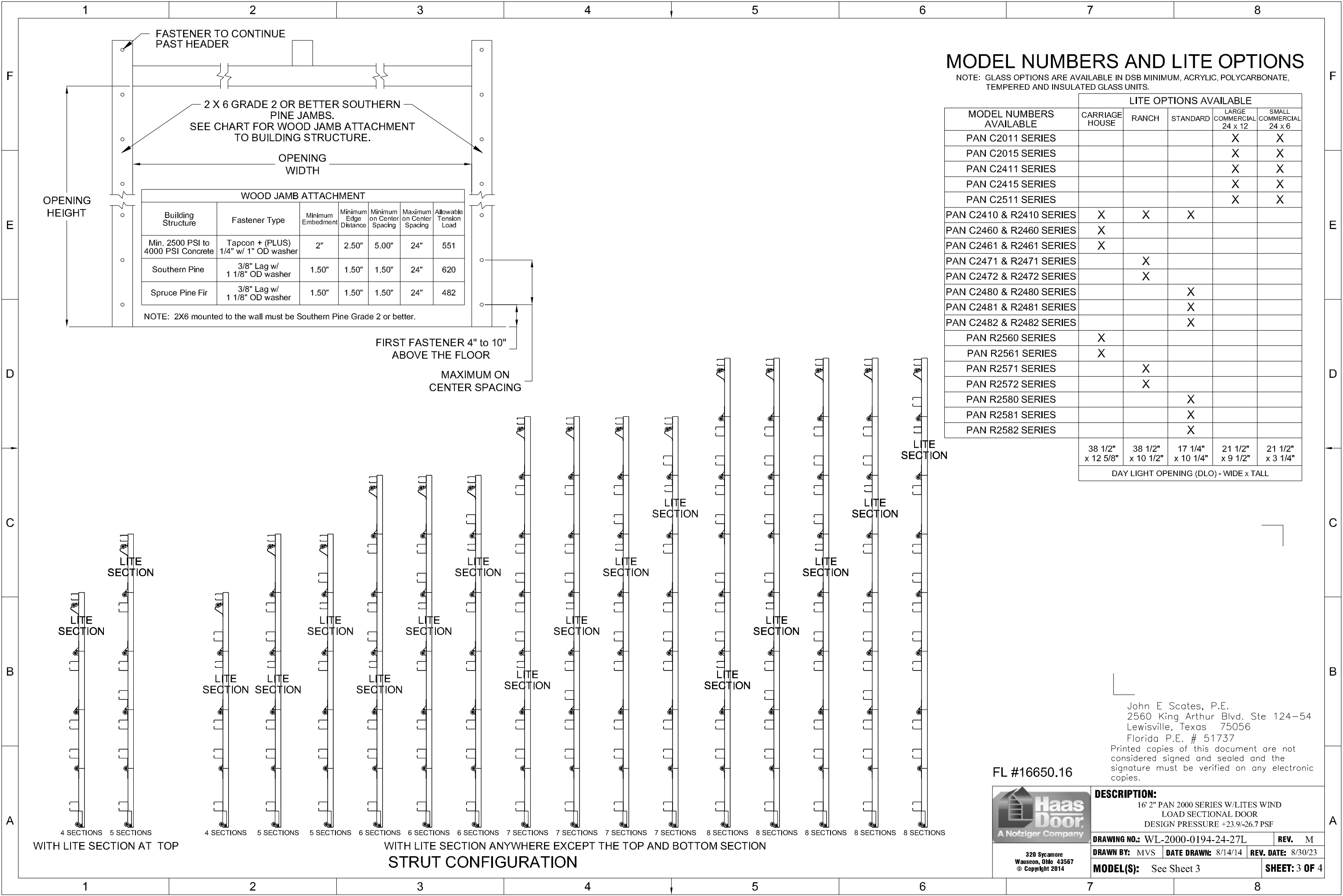


COMMERCIAL HEAVY DUTY For Low Headroom With 3" Track and Double End Stiles

ALTERNATE BOTTOM BRACKETS

NOTE: The bottom bracket tested (shown in DETAIL C) is the lightest bracket available.





MODEL NUMBERS AND LITE OPTIONS

NOTE: GLASS OPTIONS ARE AVAILABLE IN DSB MINIMUM, ACRYLIC, POLYCARBONATE, TEMPERED AND INSULATED GLASS UNITS.

MODEL NUMBERS AVAILABLE	LITE OPTIONS AVAILABLE				
	CARRIAGE HOUSE	RANCH	STANDARD	LARGE COMMERCIAL 24 x 12	SMALL COMMERCIAL 24 x 6
PAN C2011 SERIES				X	X
PAN C2015 SERIES				X	X
PAN C2411 SERIES				X	X
PAN C2415 SERIES				X	X
PAN C2511 SERIES				X	X
PAN C2410 & R2410 SERIES	X	X	X		
PAN C2460 & R2460 SERIES	X				
PAN C2461 & R2461 SERIES	X				
PAN C2471 & R2471 SERIES		X			
PAN C2472 & R2472 SERIES		X			
PAN C2480 & R2480 SERIES			X		
PAN C2481 & R2481 SERIES			X		
PAN C2482 & R2482 SERIES			X		
PAN R2560 SERIES	X				
PAN R2561 SERIES	X				
PAN R2571 SERIES		X			
PAN R2572 SERIES		X			
PAN R2580 SERIES			X		
PAN R2581 SERIES			X		
PAN R2582 SERIES			X		
	38 1/2" x 12 5/8"	38 1/2" x 10 1/2"	17 1/4" x 10 1/4"	21 1/2" x 9 1/2"	21 1/2" x 3 1/4"
DAY LIGHT OPENING (DLO) - WIDE x TALL					

John E. Scates, P.E.
2560 King Arthur Blvd. Ste 124-54
Lewisville, Texas 75056
Florida P.E. # 51737
Printed copies of this document are not considered signed and sealed and the signature must be verified on any electronic copies.

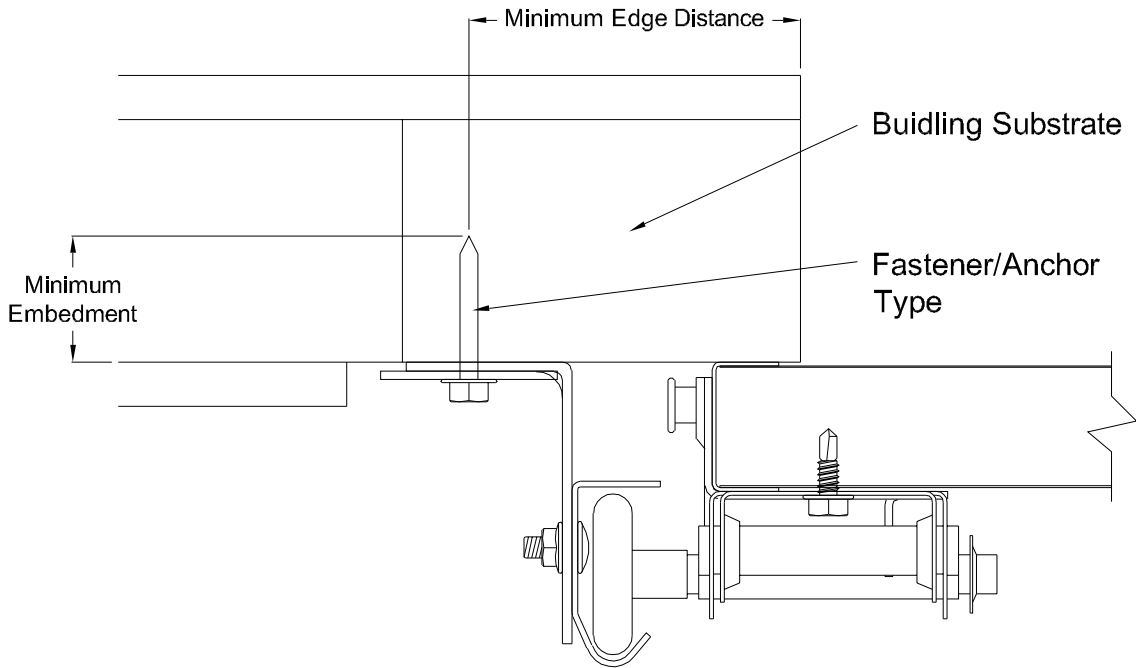
FL #16650.16



DESCRIPTION:
16' 2" PAN 2000 SERIES W/LITES WIND LOAD SECTIONAL DOOR
DESIGN PRESSURE +23.9/-26.7 PSF

DRAWING NO.: WL-2000-0194-24-27L			REV. M	
DRAWN BY: MVS	DATE DRAWN: 8/14/14	REV. DATE: 8/30/23		
MODEL(S): See Sheet 3			SHEET: 3 OF 4	

320 Sycamore
Wauseon, Ohio 43567
© Copyright 2014



Direct Mounting Detail

Bracket Mount Shown, Reverse and Continuous Angle Mount, Reverse and Continuous Angle Clip Mount Also Approved As Alternate.

DIRECT MOUNTING					
Building Substrate	Fastener Type	Minimum Embedment	Minimum Fastener Length	Minimum Edge Distance	Minimum on Center Spacing
Southern Pine (SYP)	5/16" Dia. Lag Screw w/1-1/8" OD Flat Washer (shall conform to ANSI/ASME standard B18.2.1)	-	1-5/8"	1/2"	-
Spruce-Pine-Fur (SPF)	5/16" Dia. Lag Screw w/1-1/8" OD Flat Washer (shall conform to ANSI/ASME standard B18.2.1)	-	2-1/4"	1/2"	-
Min. 2500 PSI Concrete	3/8" Dia. Ankr-Tite CCAT w/1-1/8" OD Flat Washer (by Wej-It Fastening Systems)	2-3/8"	-	2-1/2"	6"
Min. 2500 PSI Concrete	1/4" Dia. Tapcon+ by ITW w/1-1/8" OD Flat Washer	2"	-	2-1/2"	5"
Min. 2500 PSI Concrete	1/4" Dia. Wedge-Bolt+ by Powers Fasteners w/1-1/8" OD Flat Washer	1-3/4"	-	2-1/2"	5"
Min. 2500 PSI Concrete	1/4" Dia. Red Head TruBolt wedge anchor by ITW w/1-1/8" OD Flat Washer	1-3/4"	-	2-1/2"	5"
1/8" GA Steel Minimum	5/16"-12 Tek Self-Drilling Screw w/1-1/8" OD Flat Washer	-	1"	-	-
3/16" GA Steel	Fillet Weld	See DASMA Technical Data Sheet TDS-161, section G			

NOTE: Doors are available with jamb brackets or commercial full angle. In either case the the maximum spacing noted on sheet 1 should be maintained for the brackets, clips and fasteners for direct mount.

John E. Scates, P.E.
2560 King Arthur Blvd. Ste 124-54
Lewisville, Texas 75056
Florida P.E. # 51737
Printed copies of this document are not considered signed and sealed and the signature must be verified on any electronic copies.

FL #16650.16



320 Sycamore
Wauseon, Ohio 43567
© Copyright 2014

DESCRIPTION: 16' 2" PAN 2000 SERIES W/LITES WIND LOAD SECTIONAL DOOR DESIGN PRESSURE +23.9/-26.7 PSF			
DRAWING NO.: WL-2000-0194-24-27L		REV. M	
DRAWN BY: MVS	DATE DRAWN: 8/14/14	REV. DATE: 8/30/23	
MODEL(S): See Sheet 3			SHEET: 4 OF 4