

Door Height
7' - 0" Shown
See chart
below for other
door heights

Door Width 16' - 2" Shown
See chart below for other
door widths

NOTE: Track configuration above
the door opening does not affect
the wind load rating of the door.

This product has been evaluated per ANSI/DASMA 108 for static air pressure.

| | | | | Model Number | | | | | | |
|------------------|--|------------------|--|------------------|--|--------------------------|--|------------------|--|--|
| | | | | | | PAN C2410 & R2410 SERIES | | PAN C2011 SERIES | | |
| | | | | | | PAN C2460 & R2460 SERIES | | | | |
| | | | | | | PAN C2461 & R2461 SERIES | | | | |
| | | | | | | PAN C2470 & R2470 SERIES | | | | |
| | | | | | | PAN C2471 & R2471 SERIES | | | | |
| | | | | | | PAN C2480 & R2480 SERIES | | | | |
| | | | | | | PAN C2472 & R2472 SERIES | | | | |
| | | | | | | PAN C2481 & R2481 SERIES | | | | |
| | | | | | | PAN C2482 & R2482 SERIES | | | | |
| PAN R2560 SERIES | | PAN C2015 SERIES | | | | | | | | |
| PAN R2561 SERIES | | | | | | | | | | |
| PAN R2570 SERIES | | | | PAN C2411 SERIES | | | | | | |
| PAN R2571 SERIES | | | | | | | | | | |
| PAN R2572 SERIES | | | | | | | | | | |
| PAN R2580 SERIES | | PAN C2415 SERIES | | | | | | | | |
| PAN R2581 SERIES | | | | | | | | | | |
| PAN R2582 SERIES | | PAN C2511 SERIES | | | | | | | | |

| Door Widths Up To | Design Pressures | | End Stile | Minimum Center | | Minimum Center | | Minimum Center | | Impact Resistant |
|----------------------|------------------|-------|-----------|----------------|--------|----------------|--------|----------------|--------|---------------------|
| | + psf | - psf | | Stiles | Hinges | Stiles | Hinges | Stiles | Hinges | |
| 9'-2" | 32.2 | -35.9 | Single | 1 | 1 | 1 | 1 | 1 | 1 | NO |
| 10'-2" | 29.1 | -32.4 | Single | 2 | 2 | 1 | 1 | 2 | 2 | NO |
| 12'-2" | 24.3 | -27.1 | Single | 2 | 2 | 2 | 2 | 2 | 2 | NO |
| 14'-2" | 20.8 | -23.2 | Single | 4 | 4 | 2 | 2 | 3 | 3 | NO |
| 16'-2" | 18.3 | -20.4 | Single | 3 | 3 | 3 | 3 | 3 | 3 | NO |
| 18'-2" | 14.4 | -16.1 | Single | 3 | 3 | 3 | 3 | 3 | 3 | NO |
| 20'-2" | 11.7 | -13.1 | Single | 4 | 4 | 4 | 4 | 5 | 5 | NO |

This product is designed and sold by PSF. The AHJ or Engineer of Record is responsible for determining the PSF required for any given site.

Jamb bracket quantities shown are for use with grade 2 or better southern pine jambs.

Supporting structural elements are to be designed by a registered professional engineer for specific wind loads.

| Door Height | Total No. of Sections | Total # of Struts (When lite section is the top section, If not see the notice at the right) | Jamb Brkts/Side |
|-------------|-----------------------|---|-----------------|
| 6'-0" | 4 | 4 | 3 |
| 6'-3" | 4 | 4 | 3 |
| 6'-6" | 4 | 4 | 4 |
| 6'-9" | 4 | 4 | 4 |
| 7'-0" | 4 | 4 | 4 |
| 7'-6" | 5 | 5 | 5 |
| 7'-9" | 5 | 5 | 5 |
| 8'-0" | 5 | 5 | 5 |

Maximum section height is 21 in.

Maximum door height is 16 ft.

All doors, even those above the tested height, are available with jamb brackets or commercial full angle. The maximum spacing of the jamb brackets/track clips should be maintained.

NOTICE:

These drawings are a supplement to the installation instructions for a standard door and only covers those procedures that vary from standard door installation. If these specific procedures are not followed, the door may not perform as designed.


NOTICE:

The lite section of this door may be replaced with a section with another lite style or a solid section. In either case the strut and stile configuration should remain the same.

NOTICE:

Only one lite section per door is permitted. The lite section can be used anywhere except for the bottom section. If the lite section is not the top section then the struts must be located as shown in the STRUT CONFIGURATION on sheet 3.

FL #16650.13

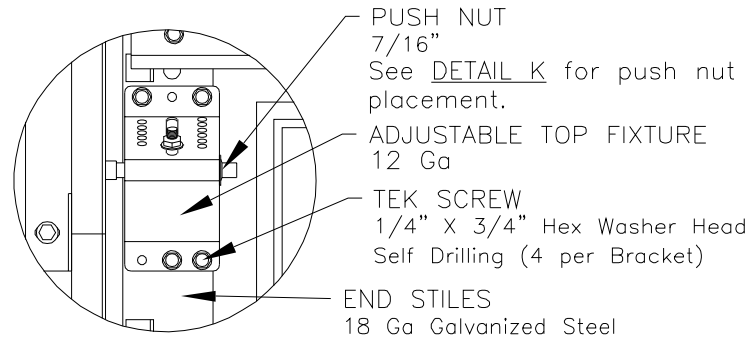


DESCRIPTION:
16' 2" PAN 2000 SERIES W/LITES WIND LOAD SECTIONAL DOOR
DESIGN PRESSURE +18.3/-20.4 PSF

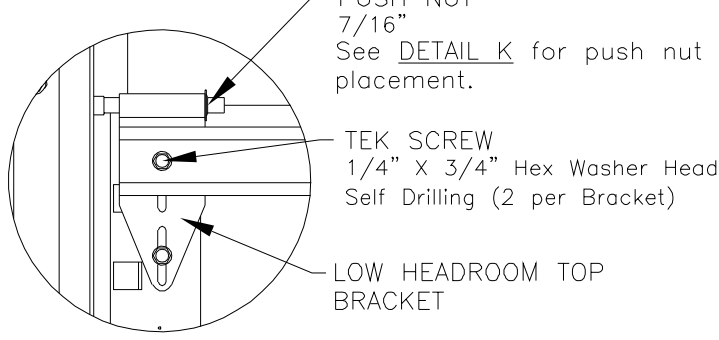
| | | |
|---|----------------------------|---------------------------|
| DRAWING NO.: WL-2000-0194-18-20L | | REV. 1 |
| DRAWN BY: MVS | DATE DRAWN: 7/24/15 | REV. DATE: 8/23/23 |
| MODEL(S): See Sheet 3 | | SHEET: 1 OF 4 |

320 Sycamore
Wauseon, Ohio 43567
© Copyright 2014

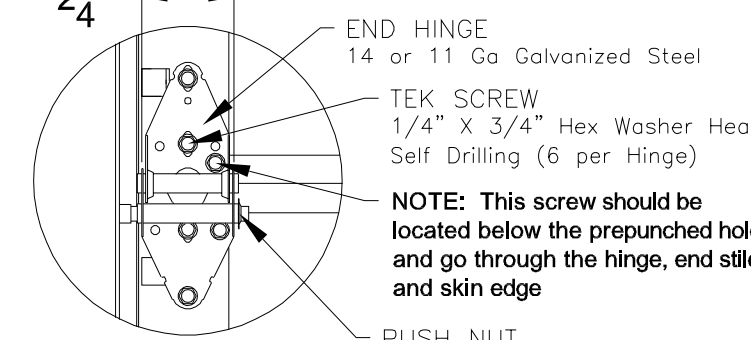
John E. Scates, P.E.
2560 King Arthur Blvd. Ste 124-54
Lewisville, Texas 75056
Florida P.E. # 51737
Printed copies of this document are not considered signed and sealed and the signature must be verified on any electronic copies.



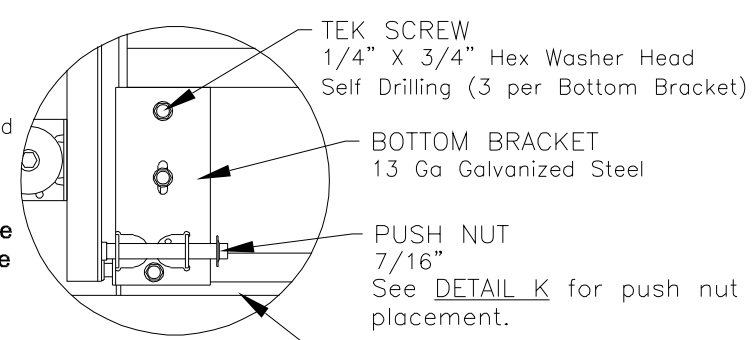
DETAIL A



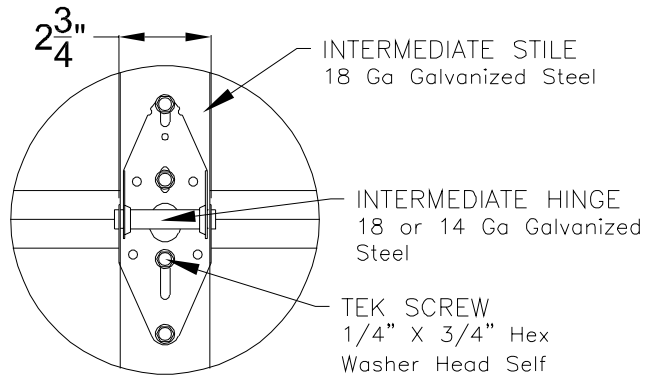
LOW HEADROOM TOP BRACKET



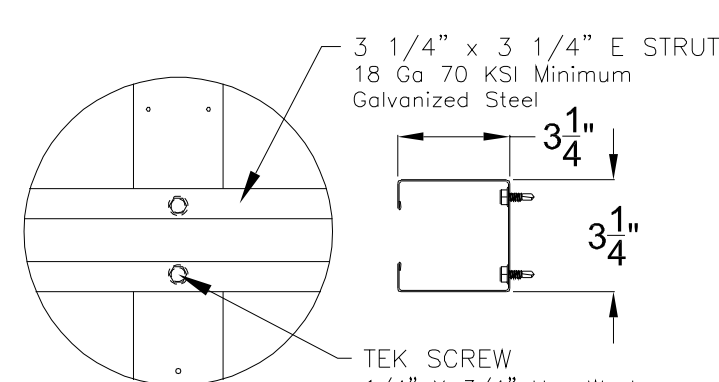
DETAIL B



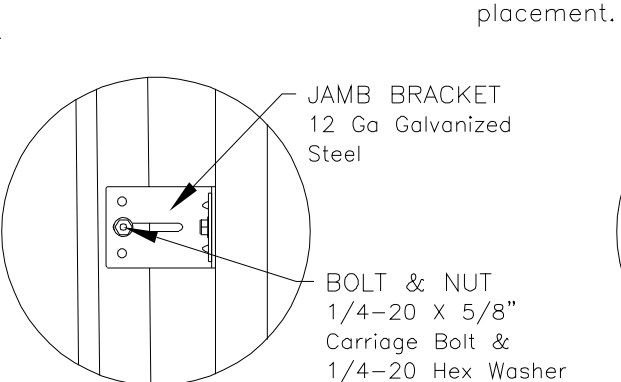
DETAIL C



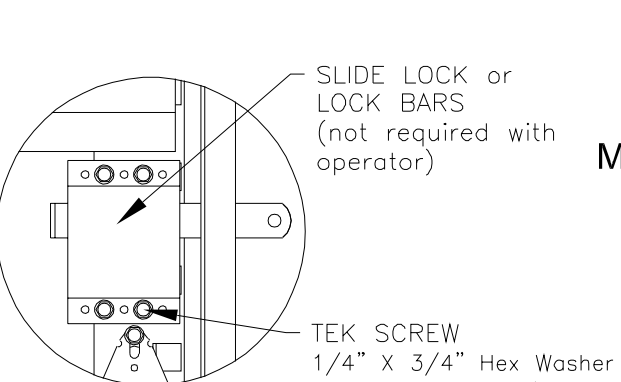
DETAIL D



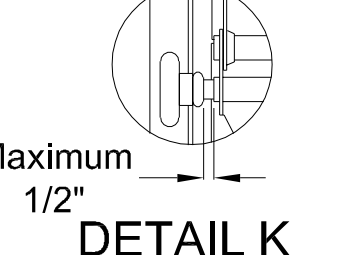
DETAIL E



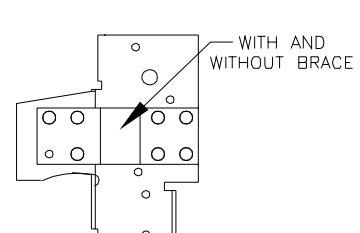
DETAIL F



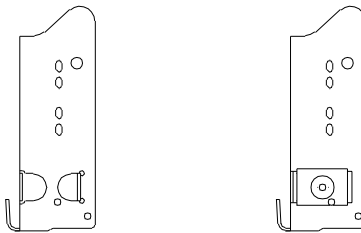
DETAIL G



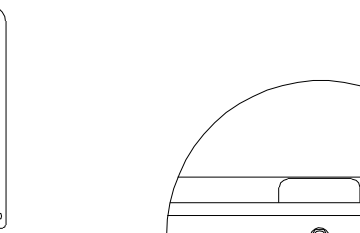
DETAIL K



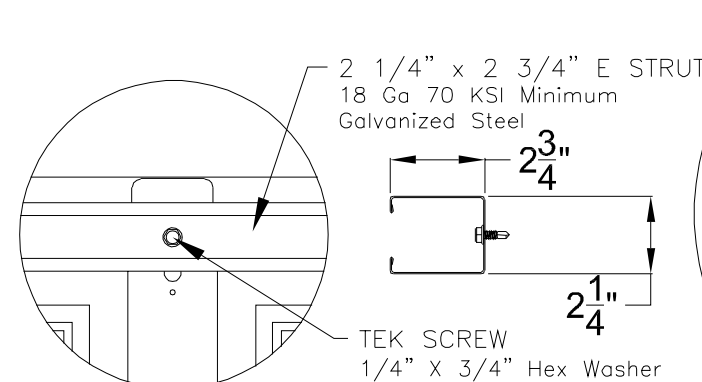
RESIDENTIAL & LIGHT COMMERCIAL For Low Headroom With 2" Track and Single End Stiles



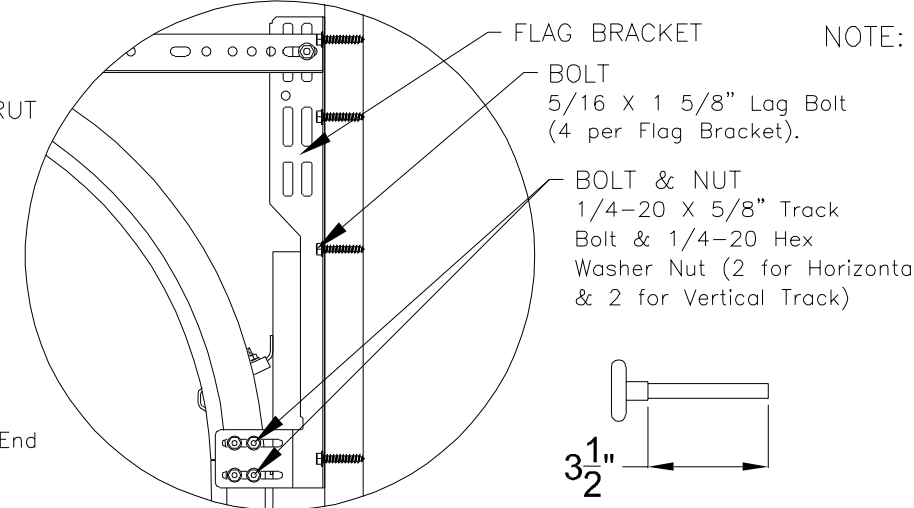
COMMERCIAL For Standard, High & Vertical Lift With 2" Track and Single End Stiles



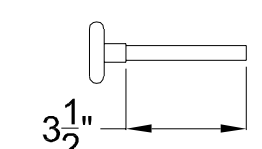
COMMERCIAL For Standard, High & Vertical Lift With 3" Track and Single End Stiles



DETAIL J



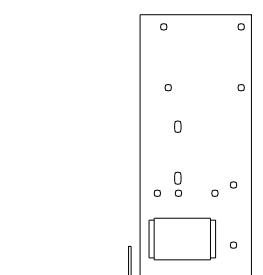
DETAIL H



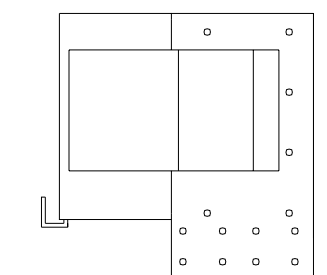
ROLLER

2" Diameter Nominal Eleven Ball Nylon or Ten Ball Steel with a Minimum Workable Shaft Length Shown.

NOTE: Details on some views omitted for clarity. Double end stiles and end hardware may be provided on wider or heavier doors.



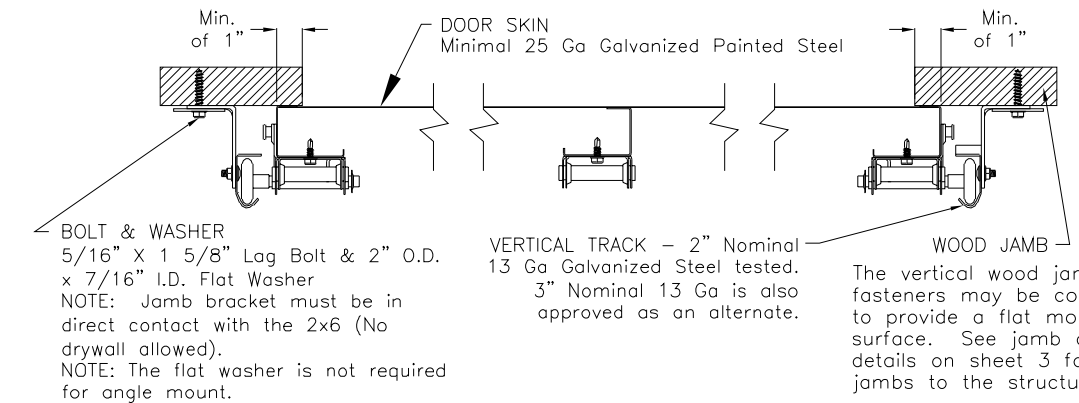
COMMERCIAL HEAVY DUTY For Standard, High & Vertical Lift With 3" Track and Double End Stiles



COMMERCIAL HEAVY DUTY For Low Headroom With 3" Track and Double End Stiles

ALTERNATE BOTTOM BRACKETS

NOTE: The bottom bracket tested (shown in DETAIL C) is the lightest bracket available.

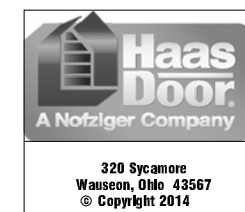


BOLT & WASHER 5/16" X 1 5/8" Lag Bolt & 2" O.D. x 7/16" I.D. Flat Washer NOTE: Jamb bracket must be in direct contact with the 2x6 (No drywall allowed). NOTE: The flat washer is not required for angle mount.

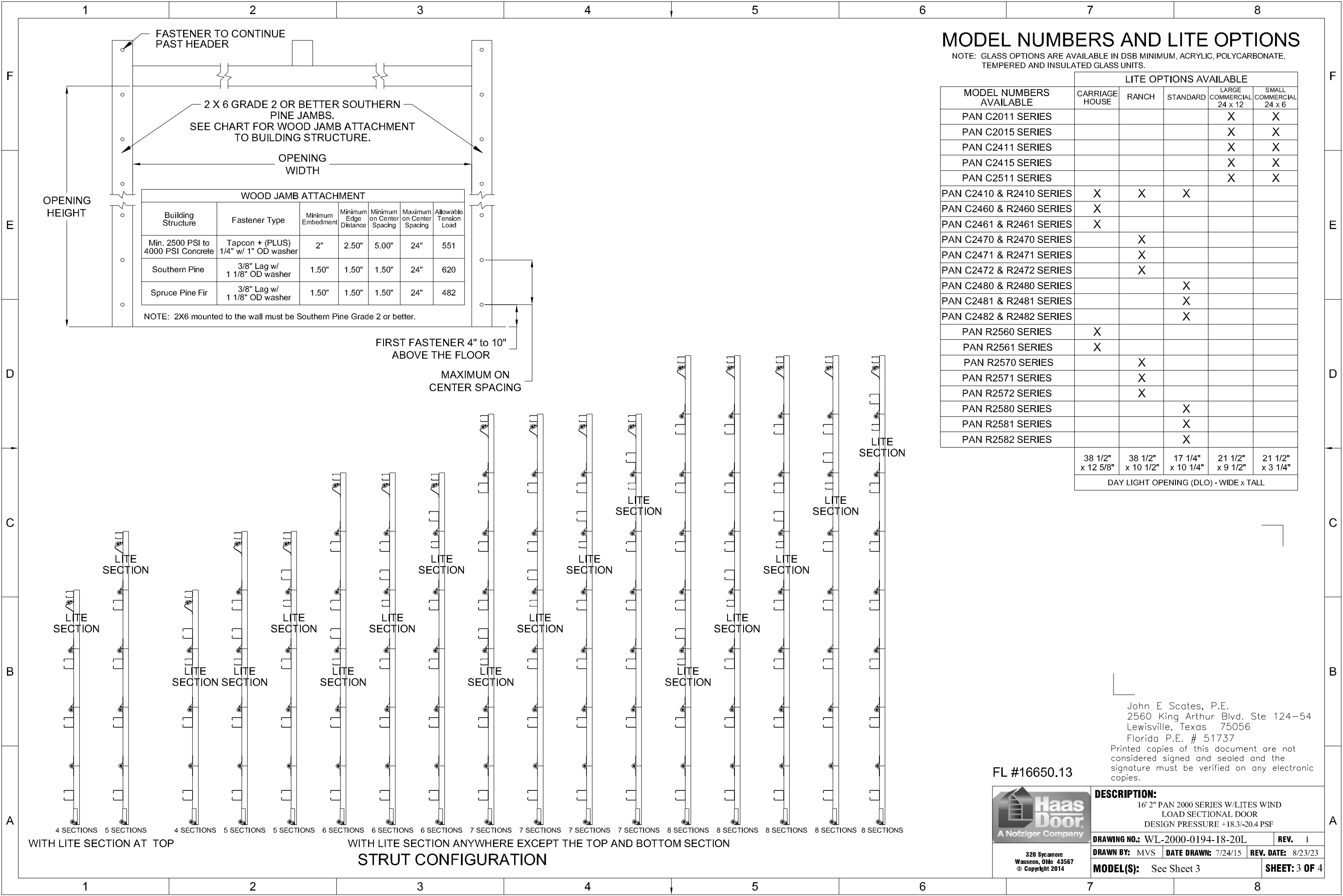
VERTICAL TRACK - 2" Nominal 13 Ga. Galvanized Steel tested. 3" Nominal 13 Ga is also approved as an alternate.

WOOD JAMB The vertical wood jamb fasteners may be counter sunk to provide a flat mounting surface. See jamb attachment details on sheet 3 for attaching jambs to the structure.

FL #16650.13



| | | | |
|---|----------------------------|---------------------------|----------------------|
| DESCRIPTION: 16" 2" PAN 2000 SERIES W/LITES WIND LOAD SECTIONAL DOOR DESIGN PRESSURE +18.3/-20.4 PSF | | | |
| DRAWING NO.: WL-2000-0194-18-20L | REV. 1 | | |
| DRAWN BY: MVS | DATE DRAWN: 7/24/15 | REV. DATE: 8/23/23 | |
| MODEL(S): See Sheet 3 | | | SHEET: 2 OF 4 |



MODEL NUMBERS AND LITE OPTIONS

NOTE: GLASS OPTIONS ARE AVAILABLE IN DSB MINIMUM, ACRYLIC, POLYCARBONATE, TEMPERED AND INSULATED GLASS UNITS.

| MODEL NUMBERS AVAILABLE | LITE OPTIONS AVAILABLE | | | | |
|---------------------------------------|------------------------|-------------------|-------------------|--------------------------|-------------------------|
| | CARRIAGE HOUSE | RANCH | STANDARD | LARGE COMMERCIAL 24 x 12 | SMALL COMMERCIAL 24 x 6 |
| PAN C2011 SERIES | | | | X | X |
| PAN C2015 SERIES | | | | X | X |
| PAN C2411 SERIES | | | | X | X |
| PAN C2415 SERIES | | | | X | X |
| PAN C2511 SERIES | | | | X | X |
| PAN C2410 & R2410 SERIES | X | X | X | | |
| PAN C2460 & R2460 SERIES | X | | | | |
| PAN C2461 & R2461 SERIES | X | | | | |
| PAN C2470 & R2470 SERIES | | X | | | |
| PAN C2471 & R2471 SERIES | | X | | | |
| PAN C2472 & R2472 SERIES | | X | | | |
| PAN C2480 & R2480 SERIES | | | X | | |
| PAN C2481 & R2481 SERIES | | | X | | |
| PAN C2482 & R2482 SERIES | | | X | | |
| PAN R2560 SERIES | X | | | | |
| PAN R2561 SERIES | X | | | | |
| PAN R2570 SERIES | | X | | | |
| PAN R2571 SERIES | | X | | | |
| PAN R2572 SERIES | | X | | | |
| PAN R2580 SERIES | | | X | | |
| PAN R2581 SERIES | | | X | | |
| PAN R2582 SERIES | | | X | | |
| | 38 1/2" x 12 5/8" | 38 1/2" x 10 1/2" | 17 1/4" x 10 1/4" | 21 1/2" x 9 1/2" | 21 1/2" x 3 1/4" |
| DAY LIGHT OPENING (DLO) - WIDE x TALL | | | | | |

FL #16650.13



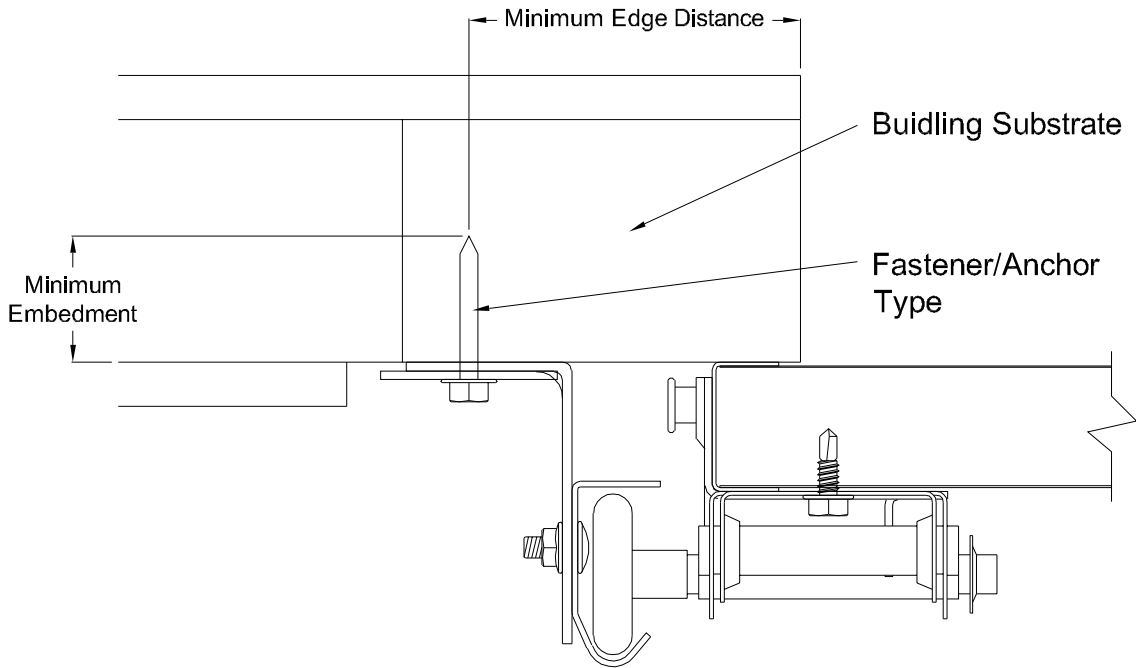
DESCRIPTION:
16' 2" PAN 2000 SERIES W/LITES WIND
LOAD SECTIONAL DOOR
DESIGN PRESSURE +18.3/-20.4 PSF

DRAWING NO.: WL-2000-0194-18-20L REV. 1

DRAWN BY: MVS DATE DRAWN: 7/24/15 REV. DATE: 8/23/23

MODEL(S): See Sheet 3 SHEET: 3 OF 4

220 Sycamore
Wauseon, Ohio 43567
© Copyright 2014



Direct Mounting Detail


Bracket Mount Shown, Reverse and Continuous Angle Mount, Reverse and Continuous Angle Clip Mount Also Approved As Alternate.

| DIRECT MOUNTING | | | | | |
|------------------------|--|---|-------------------------|-----------------------|---------------------------|
| Building Substrate | Fastener Type | Minimum Embedment | Minimum Fastener Length | Minimum Edge Distance | Minimum on Center Spacing |
| Southern Pine (SYP) | 5/16" Dia. Lag Screw w/1-1/8" OD Flat Washer (shall conform to ANSI/ASME standard B18.2.1) | - | 1-5/8" | 1/2" | - |
| Spruce-Pine-Fur (SPF) | 5/16" Dia. Lag Screw w/1-1/8" OD Flat Washer (shall conform to ANSI/ASME standard B18.2.1) | - | 2-1/4" | 1/2" | - |
| Min. 2500 PSI Concrete | 3/8" Dia. Ankr-Tite CCAT w/1-1/8" OD Flat Washer (by Wej-It Fastening Systems) | 2-3/8" | - | 2-1/2" | 6" |
| Min. 2500 PSI Concrete | 1/4" Dia. Tapcon+ by ITW w/1-1/8" OD Flat Washer | 2" | - | 2-1/2" | 5" |
| Min. 2500 PSI Concrete | 1/4" Dia. Wedge-Bolt+ by Powers Fasteners w/1-1/8" OD Flat Washer | 1-3/4" | - | 2-1/2" | 5" |
| Min. 2500 PSI Concrete | 1/4" Dia. Red Head TruBolt wedge anchor by ITW w/1-1/8" OD Flat Washer | 1-3/4" | - | 2-1/2" | 5" |
| 1/8" GA Steel Minimum | 5/16"-12 Tek Self-Drilling Screw w/1-1/8" OD Flat Washer | - | 1" | - | - |
| 3/16" GA Steel | Fillet Weld | See DASMA Technical Data Sheet TDS-161, section G | | | |

NOTE: Doors are available with jamb brackets or commercial full angle. In either case the the maximum spacing noted on sheet 1 should be maintained for the brackets, clips and fasteners for direct mount.

John E. Scates, P.E.
2560 King Arthur Blvd. Ste 124-54
Lewisville, Texas 75056
Florida P.E. # 51737
Printed copies of this document are not considered signed and sealed and the signature must be verified on any electronic copies.

FL #16650.13

| | |
|---|---|
|  A Nofziger Company | DESCRIPTION: 16' 2" PAN 2000 SERIES W/LITES WIND LOAD SECTIONAL DOOR DESIGN PRESSURE +18.3/-20.4 PSF |
| DRAWING NO.: WL-2000-0194-18-20L | REV. 1 |
| DRAWN BY: MVS | DATE DRAWN: 7/24/15 |
| MODEL(S): See Sheet 3 | REV. DATE: 8/23/23 |
| SHEET: 4 OF 4 | |