

Door Height  
8' - 0" Shown  
See chart  
below for other  
door heights

NOTE: Track configuration above  
the door opening does not affect  
the wind load rating of the door.

This product has been evaluated per ANSI/DASMA 108 for static air pressure.

			Model Number							
Door Widths Up To	Design Pressures		End Stile	Minimum Center		Minimum Center		Minimum Center		Impact Resistant
	+ psf	- psf		Stiles	Hinges	Stiles	Hinges	Stiles	Hinges	
10'-2"	38.0	-42.4	Single	4	2	3	1	5	2	NO
12'-2"	31.7	-35.4	Single	5	2	5	2	5	2	NO
14'-2"	27.2	-30.4	Single	6	4	5	2	7	3	NO
16'-2"	23.9	-26.7	Single	7	3	7	3	7	3	NO
18'-2"	18.9	-21.1	Single	7	3	7	3	7	3	NO
20'-2"	15.3	-17.1	Single	9	5	9	5	11	5	NO

This product is designed and sold by PSF. The AHJ or Engineer of Record is responsible for determining the PSF required for any given site.

Jamb bracket quantities shown are for use with grade 2 or better southern pine jambs.  
Supporting structural elements are to be designed by a registered professional engineer for specific wind loads.

Door Height	Total No. of Sections	Total # of Struts (When lite section is the top section. If not see the notice at the right)	Jamb Brkts/Side
6'-0"	3	4	4
7'-3"	4	5	5
7'-6"	4	5	5
7'-9"	4	5	5
8'-0"	4	5	5

Maximum section height is 24 in.  
Maximum door height is 16 ft.  
All doors, even those above the tested height, are available with jamb brackets or commercial full angle. The maximum spacing of the jamb brackets/track clips should be maintained.

**NOTICE:**  
These drawings are a supplement to the installation instructions for a standard door and only covers those procedures that vary from standard door installation. If these specific procedures are not followed, the door may not perform as designed.

**NOTICE:**  
The lite section of this door may be replaced with a section with another lite style or a solid section. In either case the strut and stile configuration should remain the same.

**NOTICE:**  
Only one lite section per door is permitted. The lite section can be used anywhere except for the bottom section. If the lite section is not the top section then the struts must be located as shown in the STRUT CONFIGURATION on sheet 3.

FL #16650.17

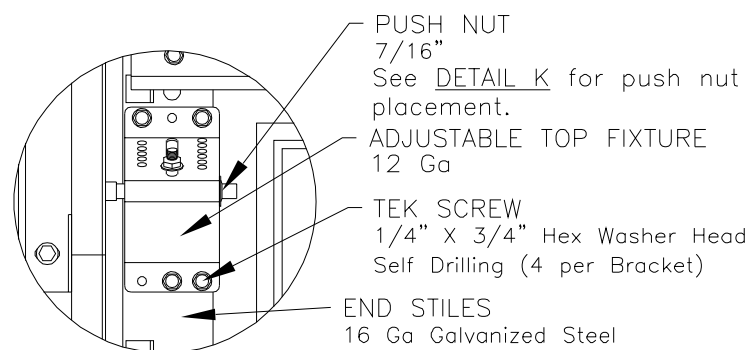
Haas Door  
A Nofziger Company

220 Sycamore  
Wauseon, Ohio 43567  
© Copyright 2014

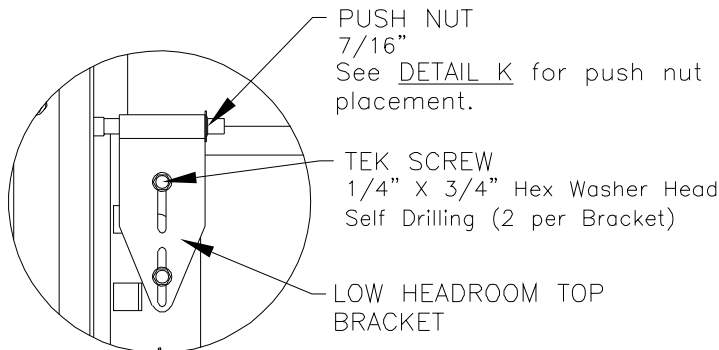
**DESCRIPTION:**  
16' 2" PAN 2000 SERIES W/LITES WIND  
LOAD SECTIONAL DOOR  
DESIGN PRESSURE +23.9/-26.7 PSF

<b>DRAWING NO.:</b> WL-2000-0194-08-24-27L	<b>REV.</b> H
<b>DRAWN BY:</b> MVS	<b>DATE DRAWN:</b> 7/6/16
<b>MODEL(S):</b> See Sheet 3	<b>REV. DATE:</b> 8/30/23
<b>SHEET: 1 OF 4</b>	

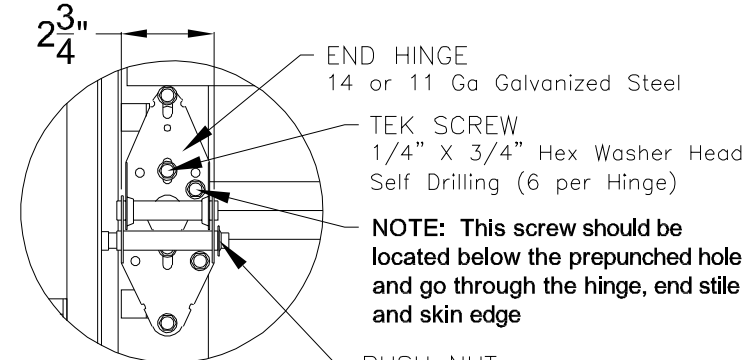
John E. Scates, P.E.  
2560 King Arthur Blvd. Ste 124-54  
Lewisville, Texas 75056  
Florida P.E. # 51737  
Printed copies of this document are not considered signed and sealed and the signature must be verified on any electronic copies.



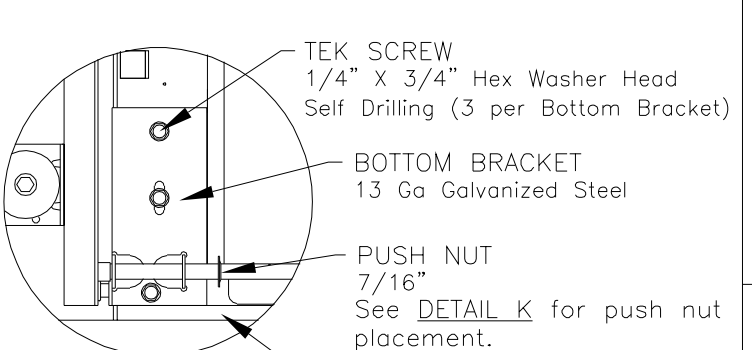
DETAIL A



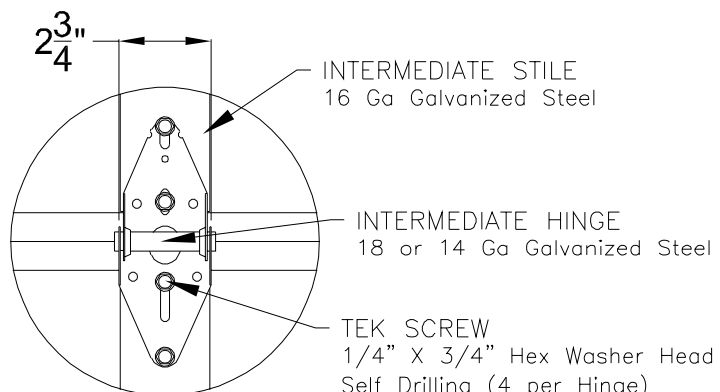
LOW HEADROOM  
TOP BRACKET



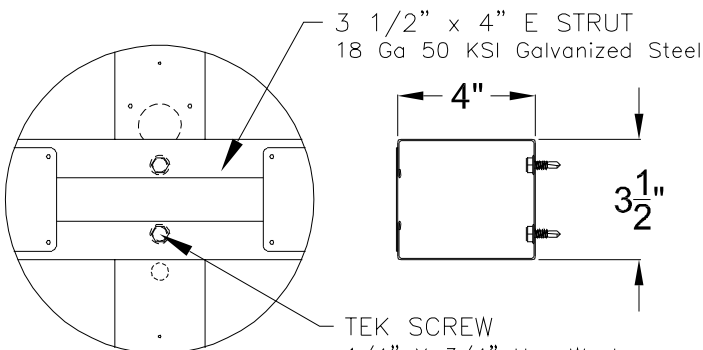
DETAIL B



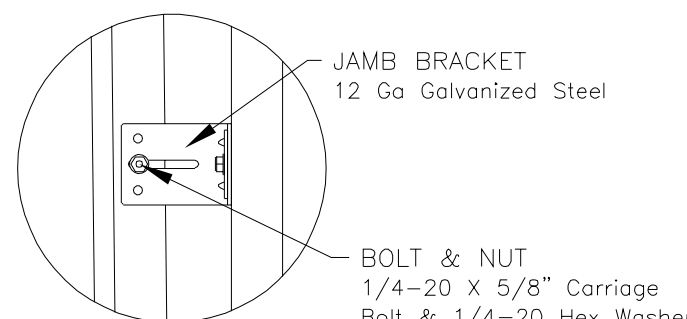
DETAIL C



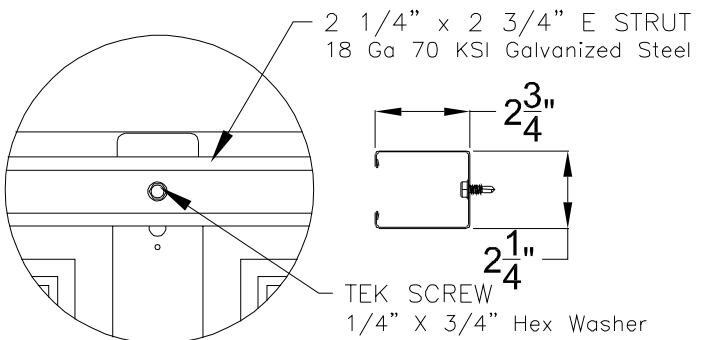
DETAIL D



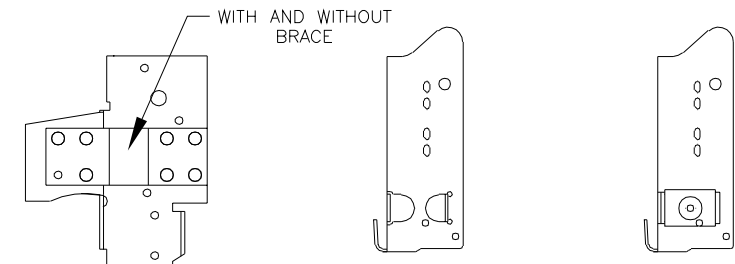
DETAIL E



DETAIL F



DETAIL J



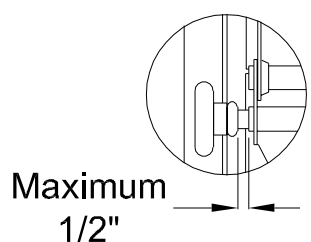
RESIDENTIAL & LIGHT COMMERCIAL For Low Headroom With 2" Track and Single End Stiles

COMMERCIAL For Standard, High & Vertical Lift With 2" Track and Single End Stiles

COMMERCIAL For Standard, High & Vertical Lift With 3" Track and Single End Stiles

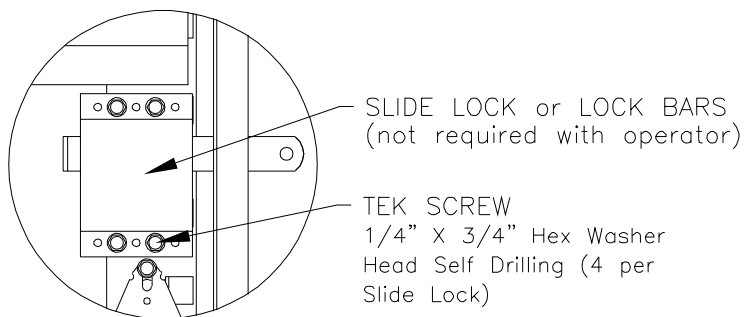
ALTERNATE BOTTOM BRACKETS

NOTE: The bottom bracket tested (shown in DETAIL C) is the lightest bracket available.

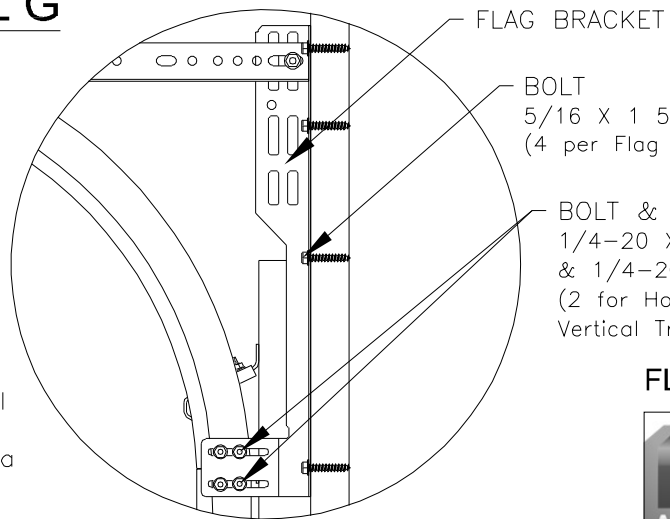


DETAIL K

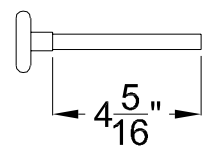
There should be a space of maximum 1/2" between the roller hub and the outside edge of the roller holder which is set by the push nut.



DETAIL G



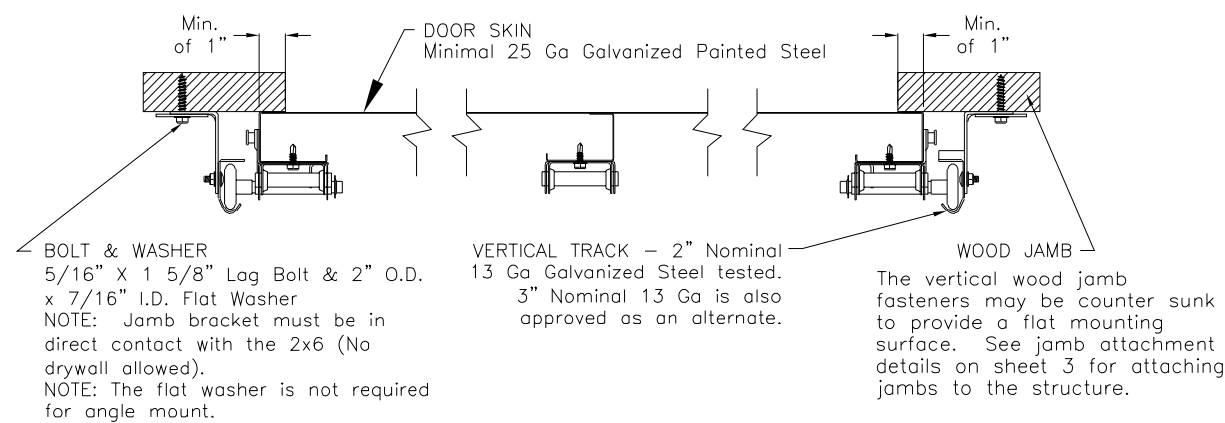
DETAIL H



ROLLER

2" Diameter Nominal Eleven Ball Nylon or Ten Ball Steel with a Minimum Workable Shaft Length Shown.

NOTE: Details on some views omitted for clarity. Double end stiles and end hardware may be provided on wider or heavier doors.




BOLT & WASHER 5/16" X 1 5/8" Lag Bolt & 2" O.D. x 7/16" I.D. Flat Washer  
NOTE: Jamb bracket must be in direct contact with the 2x6 (No drywall allowed).  
NOTE: The flat washer is not required for angle mount.

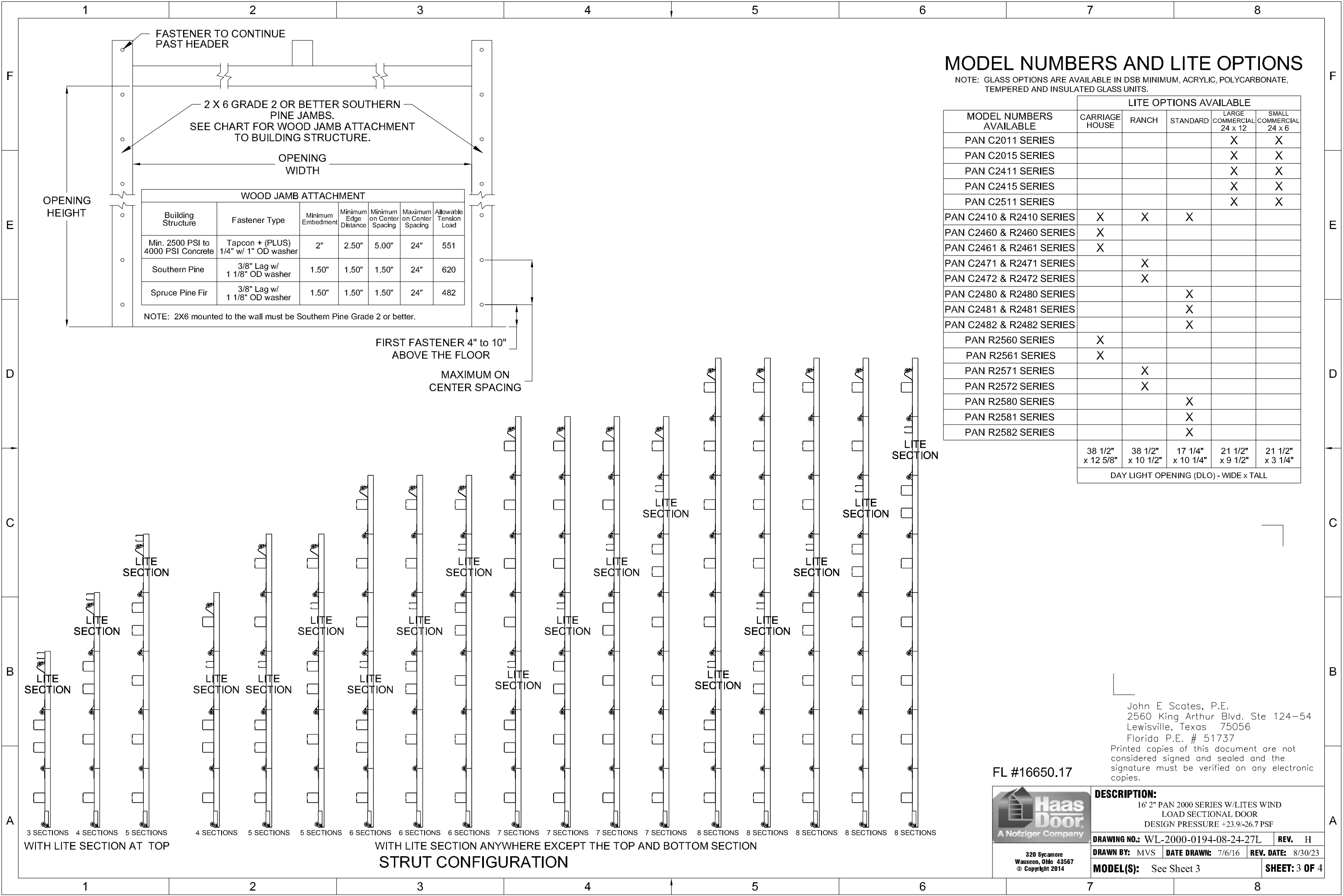
VERTICAL TRACK - 2" Nominal 13 Ga Galvanized Steel tested. 3" Nominal 13 Ga is also approved as an alternate.

WOOD JAMB  
The vertical wood jamb fasteners may be counter sunk to provide a flat mounting surface. See jamb attachment details on sheet 3 for attaching jambs to the structure.

John E. Scates, P.E.  
2560 King Arthur Blvd. Ste 124-54  
Lewisville, Texas 75056  
Florida P.E. # 51737  
Printed copies of this document are not considered signed and sealed and the signature must be verified on any electronic copies.

FL #16650.17

 A Nofziger Company		<b>DESCRIPTION:</b> 16' 2" PAN 2000 SERIES W/LITES WIND LOAD SECTIONAL DOOR DESIGN PRESSURE +23.9/-26.7 PSF	
<b>DRAWING NO.:</b> WL-2000-0194-08-24-27L	<b>REV.</b> H	<b>DRAWN BY:</b> MVS	<b>DATE DRAWN:</b> 7/6/16
<b>MODEL(S):</b> See Sheet 3	<b>REV. DATE:</b> 8/30/23	<b>SHEET: 2 OF 4</b>	



# MODEL NUMBERS AND LITE OPTIONS

NOTE: GLASS OPTIONS ARE AVAILABLE IN DSB MINIMUM, ACRYLIC, POLYCARBONATE, TEMPERED AND INSULATED GLASS UNITS.

MODEL NUMBERS AVAILABLE	LITE OPTIONS AVAILABLE				
	CARRIAGE HOUSE	RANCH	STANDARD	LARGE COMMERCIAL 24 x 12	SMALL COMMERCIAL 24 x 6
PAN C2011 SERIES				X	X
PAN C2015 SERIES				X	X
PAN C2411 SERIES				X	X
PAN C2415 SERIES				X	X
PAN C2511 SERIES				X	X
PAN C2410 & R2410 SERIES	X	X	X		
PAN C2460 & R2460 SERIES	X				
PAN C2461 & R2461 SERIES	X				
PAN C2471 & R2471 SERIES		X			
PAN C2472 & R2472 SERIES		X			
PAN C2480 & R2480 SERIES			X		
PAN C2481 & R2481 SERIES			X		
PAN C2482 & R2482 SERIES			X		
PAN R2560 SERIES	X				
PAN R2561 SERIES	X				
PAN R2571 SERIES		X			
PAN R2572 SERIES		X			
PAN R2580 SERIES			X		
PAN R2581 SERIES			X		
PAN R2582 SERIES			X		
	38 1/2" x 12 5/8"	38 1/2" x 10 1/2"	17 1/4" x 10 1/4"	21 1/2" x 9 1/2"	21 1/2" x 3 1/4"
DAY LIGHT OPENING (DLO) - WIDE x TALL					

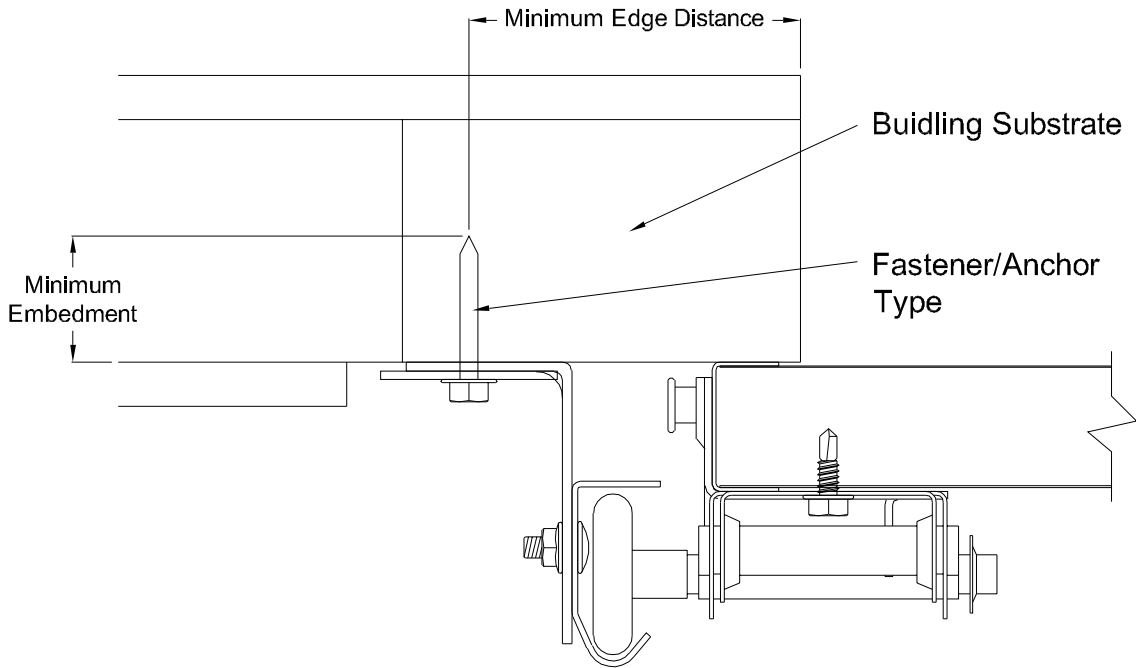
FL #16650.17



320 Sycamore  
Wauseon, Ohio 43567  
© Copyright 2014

John E. Scates, P.E.  
2560 King Arthur Blvd. Ste 124-54  
Lewisville, Texas 75056  
Florida P.E. # 51737  
Printed copies of this document are not considered signed and sealed and the signature must be verified on any electronic copies.

<b>DESCRIPTION:</b> 16' 2" PAN 2000 SERIES W/LITES WIND LOAD SECTIONAL DOOR DESIGN PRESSURE +23.9/-26.7 PSF		
<b>DRAWING NO.:</b> WL-2000-0194-08-24-27L	<b>REV.</b> H	
<b>DRAWN BY:</b> MVS	<b>DATE DRAWN:</b> 7/6/16	<b>REV. DATE:</b> 8/30/23
<b>MODEL(S):</b> See Sheet 3		<b>SHEET: 3 OF 4</b>



## Direct Mounting Detail


Bracket Mount Shown, Reverse and Continuous Angle Mount, Reverse and Continuous Angle Clip Mount Also Approved As Alternate.

DIRECT MOUNTING					
Building Substrate	Fastener Type	Minimum Embedment	Minimum Fastener Length	Minimum Edge Distance	Minimum on Center Spacing
Southern Pine (SYP)	5/16" Dia. Lag Screw w/1-1/8" OD Flat Washer (shall conform to ANSI/ASME standard B18.2.1)	-	1-5/8"	1/2"	-
Spruce-Pine-Fur (SPF)	5/16" Dia. Lag Screw w/1-1/8" OD Flat Washer (shall conform to ANSI/ASME standard B18.2.1)	-	2-1/4"	1/2"	-
Min. 2500 PSI Concrete	3/8" Dia. Ankr-Tite CCAT w/1-1/8" OD Flat Washer (by Wej-It Fastening Systems)	2-3/8"	-	2-1/2"	6"
Min. 2500 PSI Concrete	1/4" Dia. Tapcon+ by ITW w/1-1/8" OD Flat Washer	2"	-	2-1/2"	5"
Min. 2500 PSI Concrete	1/4" Dia. Wedge-Bolt+ by Powers Fasteners w/1-1/8" OD Flat Washer	1-3/4"	-	2-1/2"	5"
Min. 2500 PSI Concrete	1/4" Dia. Red Head TruBolt wedge anchor by ITW w/1-1/8" OD Flat Washer	1-3/4"	-	2-1/2"	5"
1/8" GA Steel Minimum	5/16"-12 Tek Self-Drilling Screw w/1-1/8" OD Flat Washer	-	1"	-	-
3/16" GA Steel	Fillet Weld	See DASMA Technical Data Sheet TDS-161, section G			

NOTE: Doors are available with jamb brackets or commercial full angle. In either case the the maximum spacing noted on sheet 1 should be maintained for the brackets, clips and fasteners for direct mount.

John E. Scates, P.E.  
2560 King Arthur Blvd. Ste 124-54  
Lewisville, Texas 75056  
Florida P.E. # 51737  
Printed copies of this document are not considered signed and sealed and the signature must be verified on any electronic copies.

FL #16650.17

 A Nofziger Company 320 Sycamore Wauseon, Ohio 43567 © Copyright 2014	<b>DESCRIPTION:</b> 16' 2" PAN 2000 SERIES W/LITES WIND LOAD SECTIONAL DOOR DESIGN PRESSURE +23.9/-26.7 PSF				
	<b>DRAWING NO.:</b> WL-2000-0194-08-24-27L				<b>REV.</b> H
	<b>DRAWN BY:</b> MVS	<b>DATE DRAWN:</b> 7/6/16	<b>REV. DATE:</b> 8/30/23		
	<b>MODEL(S):</b> See Sheet 3				<b>SHEET: 4 OF 4</b>