

Door Height  
8' - 0" Shown  
See chart  
below for other  
door height.

Door Width 16' - 2" Shown  
See chart below for other  
door widths

NOTE: Track configuration above  
the door opening does not affect  
the wind load rating of the door.

This product has been evaluated per ANSI/DASMA 108 for static air pressure.

Jamb bracket quantities shown are for use  
with grade 2 or better southern pine jambs.  
  
Supporting structural elements are to be  
designed by a registered professional engineer  
for specific wind loads.

**NOTICE:**  
These drawings are a supplement  
to the installation instructions for  
a standard door and only covers  
those procedures that vary from  
standard door installation. If  
these specific procedures are not  
followed, the door may not  
perform as designed.

**NOTICE:**  
The lite section of this door may be  
replaced with a section with another lite  
style or a solid section. In either case  
the strut and stile configuration should  
remain the same.

**NOTICE:**  
Only one lite section per door is  
permitted. The lite section can be  
used anywhere except for the bottom  
section. If the lite section is not  
the top section then the struts must  
be located as shown in the STRUT  
CONFIGURATION on sheet 3.


John E. Scates, P.E.  
2560 King Arthur Blvd. Ste 124-54  
Lewisville, Texas 75056  
Florida P.E. # 51737  
Printed copies of this document are not  
considered signed and sealed and the  
signature must be verified on any electronic  
copies.

Door Widths Up To	Design Pressures		End Stile	Minimum Center		Minimum Center		Minimum Center		Impact Resistant
	+ psf	- psf		Stiles	Hinges	Stiles	Hinges	Stiles	Hinges	
10'-2"	32.4	-36.1	Single	4	2	3	1	5	2	NO
12'-2"	27.1	-30.1	Single	5	2	5	2	5	2	NO
14'-2"	23.2	-25.9	Single	6	4	5	2	7	3	NO
16'-2"	20.4	-22.7	Single	7	3	7	3	7	3	NO
18'-2"	16.1	-17.9	Single	7	3	7	3	7	3	NO
20'-2"	13.1	-14.6	Single	9	5	9	5	11	5	NO

Door Height	Total No. of Sections	Total # of Struts (When lite section is the top section. If not see the notice at the right)	Jamb Brkts/Side
6'-0"	3	4	4
6'-0"	4	5	4
6'-3"	4	5	4
6'-6"	4	5	5
6'-9"	4	5	5
7'-0"	4	5	5
7'-3"	4	5	5
7'-6"	4	5	5
7'-6"	5	6	5
7'-9"	4	5	5
7'-9"	5	6	5
8'-0"	4	5	5
8'-0"	5	6	5

Maximum section height is 24 in.  
Maximum door height is 16 ft.  
  
All doors, even those above the tested height, are available  
with jamb brackets or commercial full angle. The maximum  
spacing of the jamb brackets/track clips should be  
maintained.

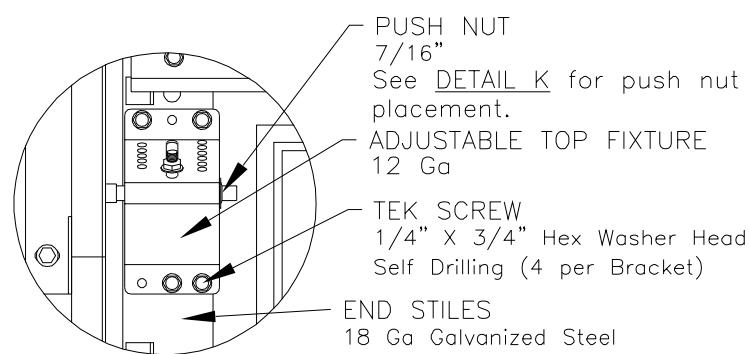
FL #16650.15



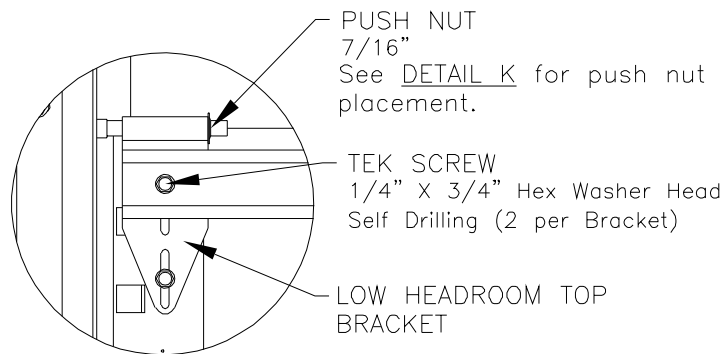
**DESCRIPTION:**  
16' 2" PAN 2000 SERIES W/LITES WIND  
LOAD SECTIONAL DOOR  
DESIGN PRESSURE +20.4/-22.7 PSF

<b>DRAWING NO.:</b> WL-2000-0194-08-20-23L	<b>REV.</b> K	
<b>DRAWN BY:</b> MVS	<b>DATE DRAWN:</b> 8/14/14	<b>REV. DATE:</b> 8/30/23
<b>MODEL(S):</b> See Sheet 3		<b>SHEET: 1 OF 4</b>

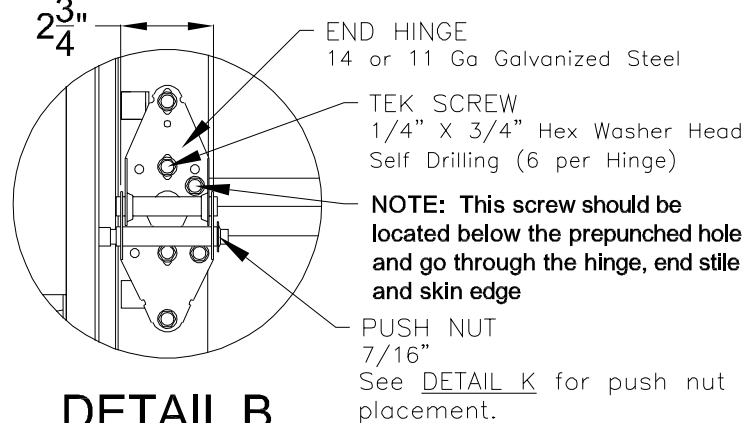
This product is designed and sold by PSF. The AHJ or Engineer of Record is responsible for determining the PSF required for any given site.



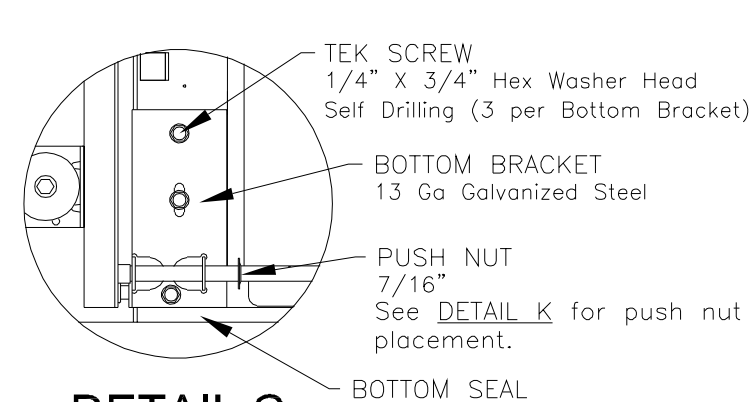
**DETAIL A**



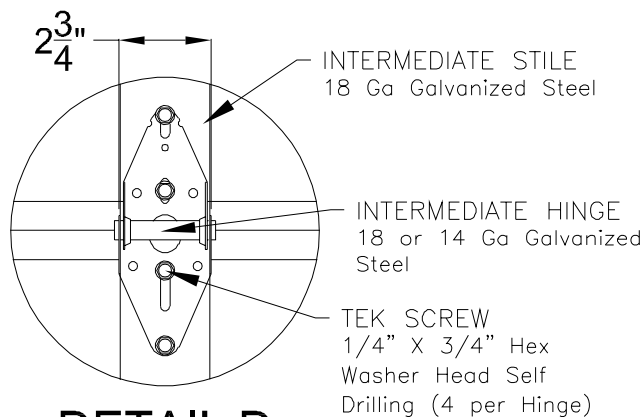
**LOW HEADROOM  
TOP BRACKET**



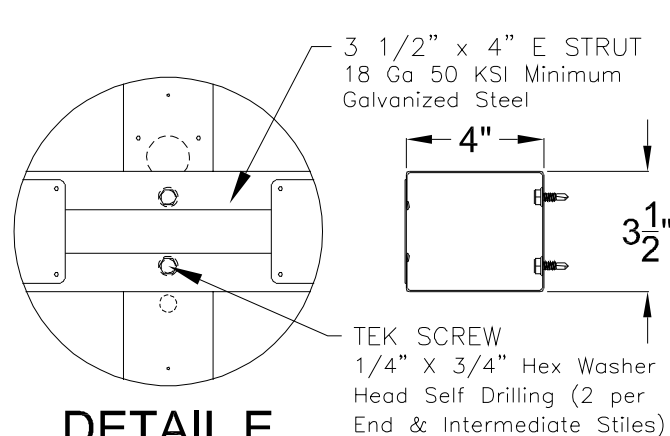
**DETAIL B**



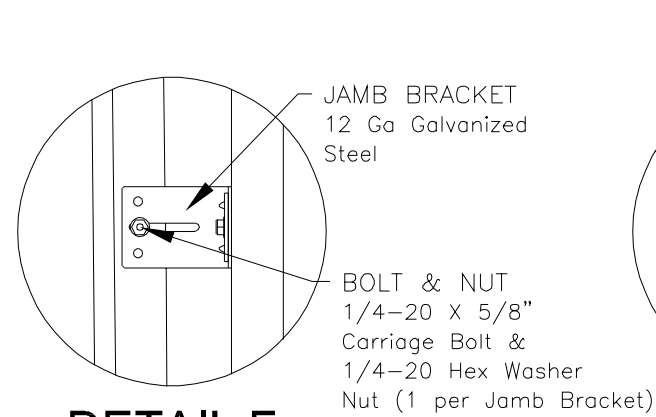
**DETAIL C**



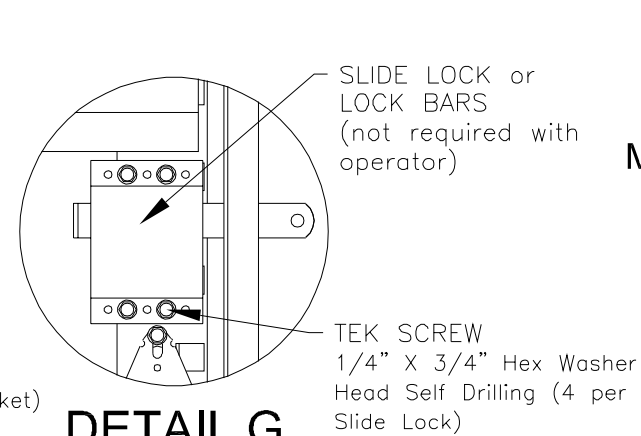
**DETAIL D**



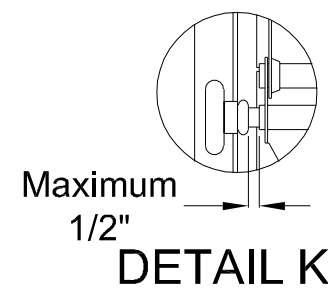
**DETAIL E**



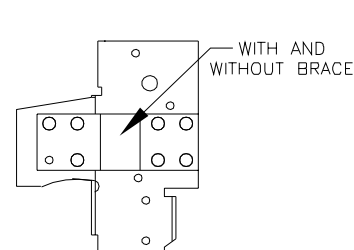
**DETAIL F**



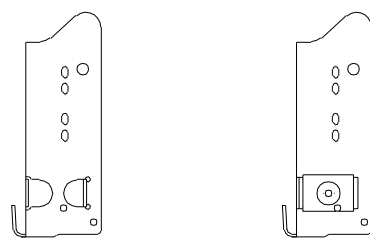
**DETAIL G**



There should be a space of maximum 1/2" between the roller hub and the outside edge of the roller holder which is set by the push nut.



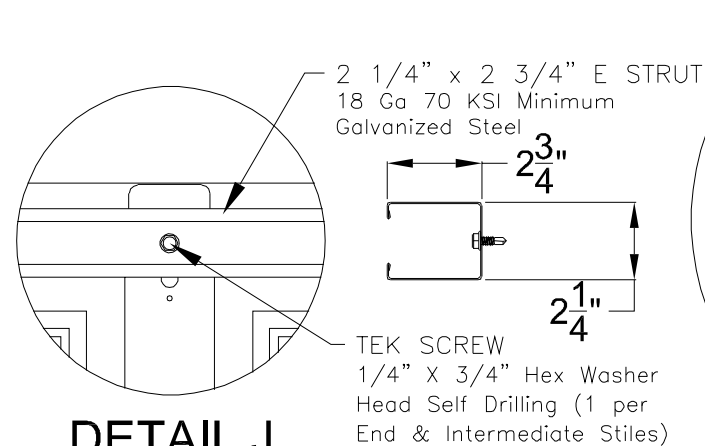
**RESIDENTIAL & LIGHT COMMERCIAL**  
For Low Headroom With 2" Track and Single End Stiles



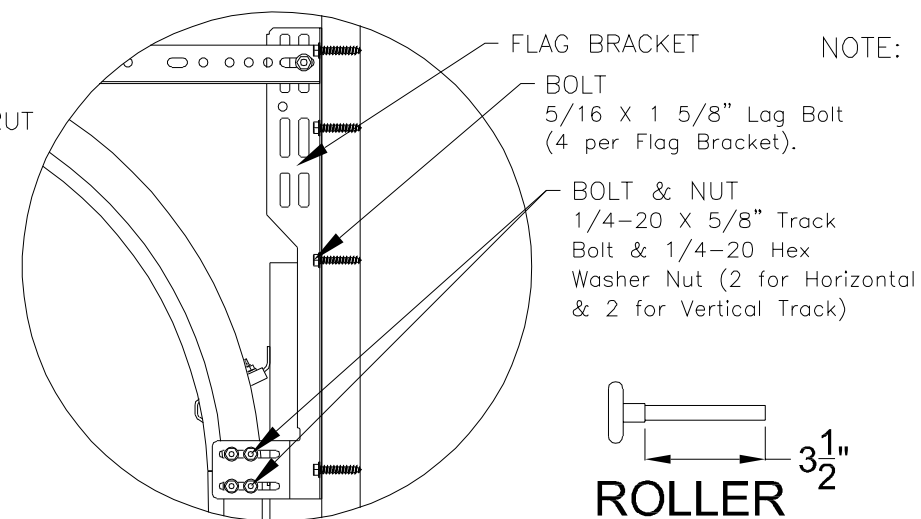
**COMMERCIAL**  
For Standard, High & Vertical Lift With 2" Track and Single End Stiles



**COMMERCIAL**  
For Standard, High & Vertical Lift With 3" Track and Single End Stiles



**DETAIL J**



**ROLLER**

2" Diameter Nominal Eleven Ball Nylon or Ten Ball Steel with a Minimum Workable Shaft Length Shown.

NOTE: Details on some views omitted for clarity.

Double end stiles and end hardware may be provided on wider or heavier doors.

John E. Scates, P.E.  
2560 King Arthur Blvd. Ste 124-54  
Lewisville, Texas 75056  
Florida P.E. # 51737

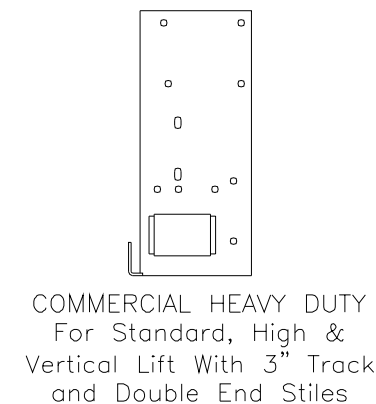
Printed copies of this document are not considered signed and sealed and the signature must be verified on any electronic copies.

FL #16650.15

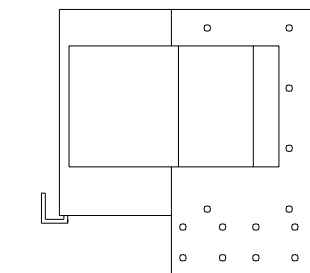


DESCRIPTION:			
16" 2" PAN 2000 SERIES W/LITES WIND LOAD SECTIONAL DOOR DESIGN PRESSURE +20.4/-22.7 PSF			
DRAWING NO.:	WL-2000-0194-08-20-23L	REV.	K
DRAWN BY:	MVS	DATE DRAWN:	8/14/14
MODEL(S):	See Sheet 3	REV. DATE:	8/30/23
			SHEET: 2 OF 4

220 Sycamore  
Wauseon, Ohio 43567  
© Copyright 2014



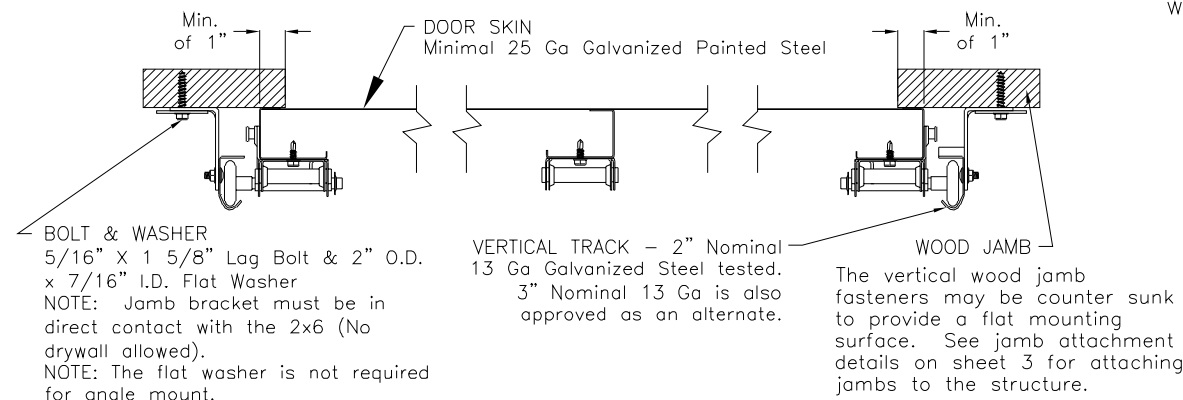
**COMMERCIAL HEAVY DUTY**  
For Standard, High & Vertical Lift With 3" Track and Double End Stiles

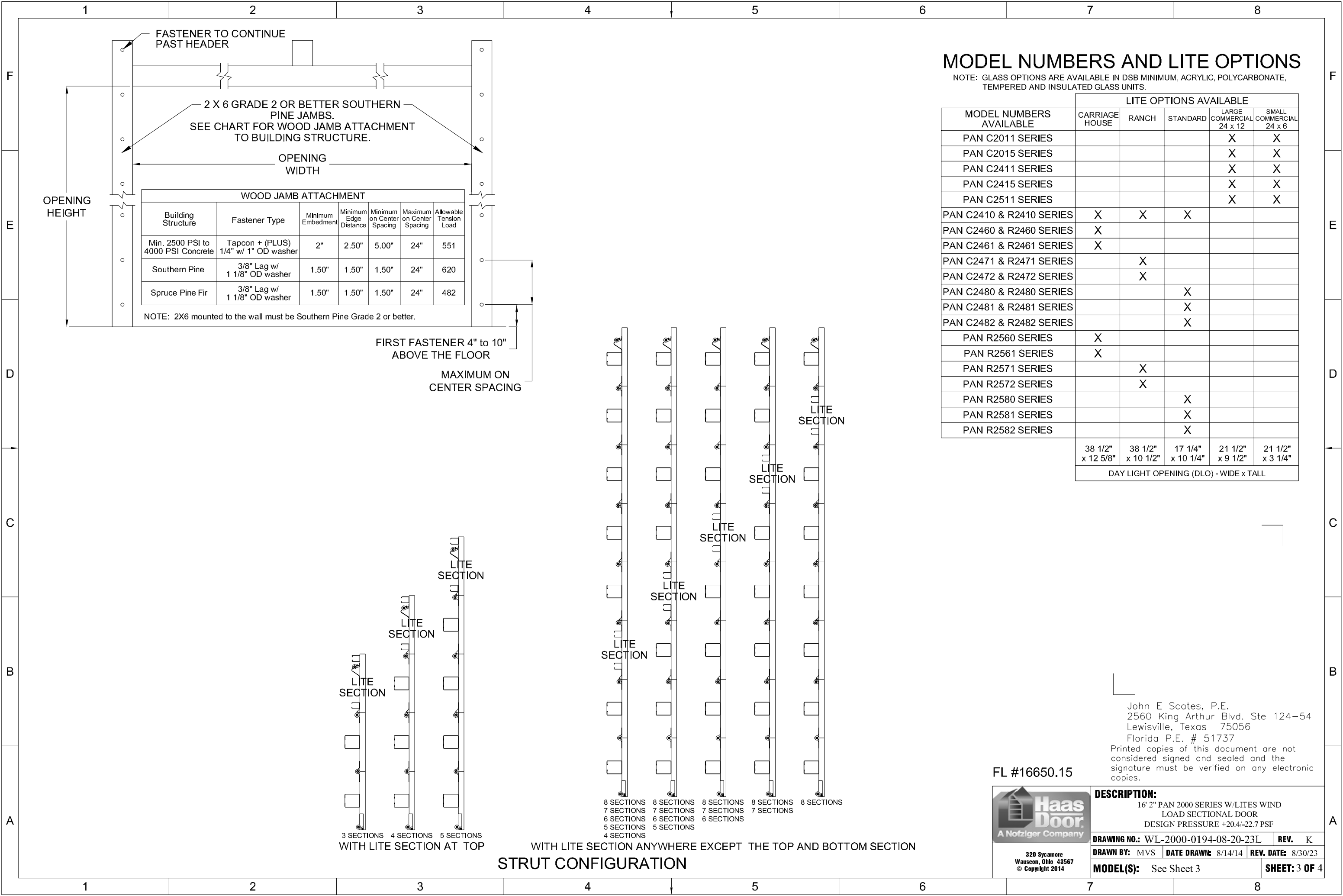


**COMMERCIAL HEAVY DUTY**  
For Low Headroom With 3" Track and Double End Stiles

## ALTERNATE BOTTOM BRACKETS

NOTE: The bottom bracket tested (shown in DETAIL C) is the lightest bracket available.






MODEL NUMBERS AND LITE OPTIONS

NOTE: GLASS OPTIONS ARE AVAILABLE IN DSB MINIMUM, ACRYLIC, POLYCARBONATE, TEMPERED AND INSULATED GLASS UNITS.

MODEL NUMBERS AVAILABLE	LITE OPTIONS AVAILABLE				
	CARRIAGE HOUSE	RANCH	STANDARD	LARGE COMMERCIAL 24 x 12	SMALL COMMERCIAL 24 x 6
PAN C2011 SERIES				X	X
PAN C2015 SERIES				X	X
PAN C2411 SERIES				X	X
PAN C2415 SERIES				X	X
PAN C2511 SERIES				X	X
PAN C2410 & R2410 SERIES	X	X	X		
PAN C2460 & R2460 SERIES	X				
PAN C2461 & R2461 SERIES	X				
PAN C2471 & R2471 SERIES		X			
PAN C2472 & R2472 SERIES		X			
PAN C2480 & R2480 SERIES			X		
PAN C2481 & R2481 SERIES			X		
PAN C2482 & R2482 SERIES			X		
PAN R2560 SERIES	X				
PAN R2561 SERIES	X				
PAN R2571 SERIES		X			
PAN R2572 SERIES		X			
PAN R2580 SERIES			X		
PAN R2581 SERIES			X		
PAN R2582 SERIES			X		
38 1/2" x 12 5/8"		38 1/2" x 10 1/2"	17 1/4" x 10 1/4"	21 1/2" x 9 1/2"	21 1/2" x 3 1/4"
DAY LIGHT OPENING (DLO) - WIDE x TALL					

John E. Scates, P.E.  
2560 King Arthur Blvd. Ste 124-54  
Lewisville, Texas 75056  
Florida P.E. # 51737  
Printed copies of this document are not considered signed and sealed and the signature must be verified on any electronic copies.

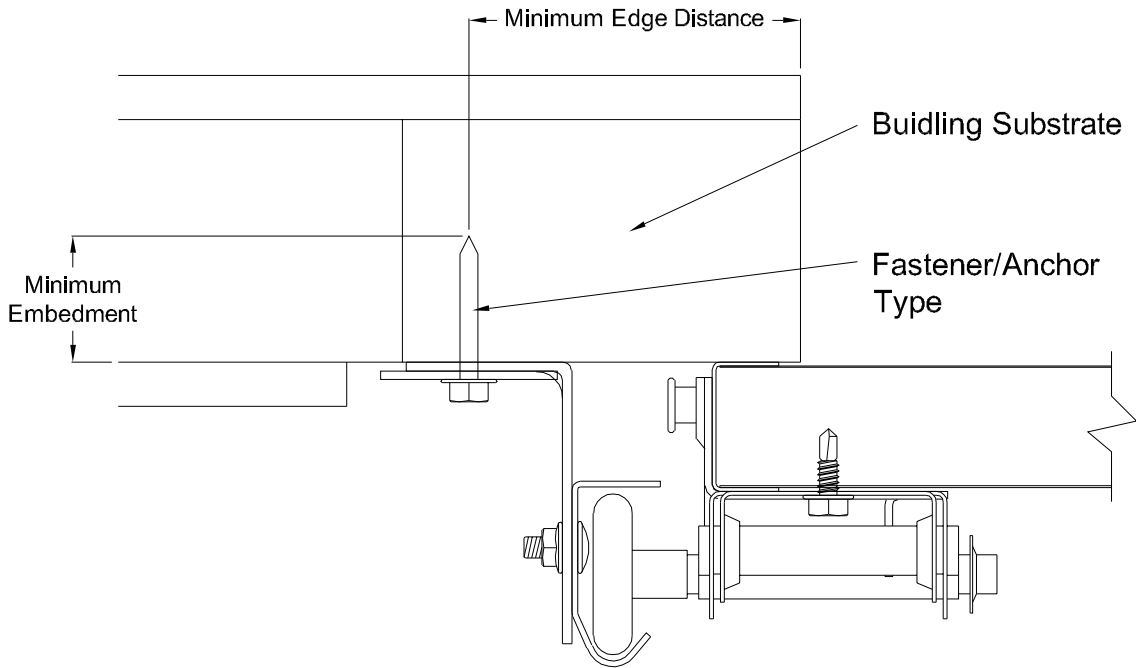
FL #16650.15



**DESCRIPTION:**  
16' 2" PAN 2000 SERIES W/LITES WIND LOAD SECTIONAL DOOR  
DESIGN PRESSURE +20.4/-22.7 PSF

<b>DRAWING NO.:</b> WL-2000-0194-08-20-23L		<b>REV.</b> K
<b>DRAWN BY:</b> MVS	<b>DATE DRAWN:</b> 8/14/14	<b>REV. DATE:</b> 8/30/23
<b>MODEL(S):</b> See Sheet 3		<b>SHEET: 3 OF 4</b>

WITH LITE SECTION ANYWHERE EXCEPT THE TOP AND BOTTOM SECTION  
STRUT CONFIGURATION



## Direct Mounting Detail


Bracket Mount Shown, Reverse and Continuous Angle Mount, Reverse and Continuous Angle Clip Mount Also Approved As Alternate.

DIRECT MOUNTING					
Building Substrate	Fastener Type	Minimum Embedment	Minimum Fastener Length	Minimum Edge Distance	Minimum on Center Spacing
Southern Pine (SYP)	5/16" Dia. Lag Screw w/1-1/8" OD Flat Washer (shall conform to ANSI/ASME standard B18.2.1)	-	1-5/8"	1/2"	-
Spruce-Pine-Fur (SPF)	5/16" Dia. Lag Screw w/1-1/8" OD Flat Washer (shall conform to ANSI/ASME standard B18.2.1)	-	2-1/4"	1/2"	-
Min. 2500 PSI Concrete	3/8" Dia. Ankr-Tite CCAT w/1-1/8" OD Flat Washer (by Wej-It Fastening Systems)	2-3/8"	-	2-1/2"	6"
Min. 2500 PSI Concrete	1/4" Dia. Tapcon+ by ITW w/1-1/8" OD Flat Washer	2"	-	2-1/2"	5"
Min. 2500 PSI Concrete	1/4" Dia. Wedge-Bolt+ by Powers Fasteners w/1-1/8" OD Flat Washer	1-3/4"	-	2-1/2"	5"
Min. 2500 PSI Concrete	1/4" Dia. Red Head TruBolt wedge anchor by ITW w/1-1/8" OD Flat Washer	1-3/4"	-	2-1/2"	5"
1/8" GA Steel Minimum	5/16"-12 Tek Self-Drilling Screw w/1-1/8" OD Flat Washer	-	1"	-	-
3/16" GA Steel	Fillet Weld	See DASMA Technical Data Sheet TDS-161, section G			

NOTE: Doors are available with jamb brackets or commercial full angle. In either case the the maximum spacing noted on sheet 1 should be maintained for the brackets, clips and fasteners for direct mount.

John E. Scates, P.E.  
2560 King Arthur Blvd. Ste 124-54  
Lewisville, Texas 75056  
Florida P.E. # 51737  
Printed copies of this document are not considered signed and sealed and the signature must be verified on any electronic copies.

FL #16650.15

 <b>Haas Door</b> A Nofziger Company	<b>DESCRIPTION:</b> 16' 2" PAN 2000 SERIES W/LITES WIND LOAD SECTIONAL DOOR DESIGN PRESSURE +20.4/-22.7 PSF		
	<b>DRAWING NO.:</b> WL-2000-0194-08-20-23L		<b>REV.</b> K
	<b>DRAWN BY:</b> MVS	<b>DATE DRAWN:</b> 8/14/14	<b>REV. DATE:</b> 8/30/23
	<b>MODEL(S):</b> See Sheet 3		<b>SHEET: 4 OF 4</b>

320 Sycamore  
Wauseon, Ohio 43567  
© Copyright 2014