

This product has been evaluated per ANSI/DASMA 108 for static air pressure.

This product has been evaluated per ANSI/DASMA 115 for large missile impact and cyclic wind pressure.

Jamb bracket quantities shown are for use with grade 2 or better southern pine jambs.

Supporting structural elements are to be designed by a registered professional engineer for specific wind loads.

			Model Number							
Door Widths Up To	Design Pressures		End Style	Minimum Center		Minimum Center		Minimum Center		Impact Resistant
	+ psf	- psf		Stiles	Hinges	Stiles	Hinges	Stiles	Hinges	
8'-2"	35.0	-39.0	Single	3	1	3	1	3	1	YES
9'-2"	35.0	-39.0	Single	3	1	3	1	3	1	YES
10'-2"	35.0	-39.0	Single	4	2	3	1	5	2	YES

This product is available in narrower sizes with the same PSF and constructed as shown.

This product is designed and sold by PSF. The AHJ or Engineer of Record is responsible for determining the PSF required for any given site.

Door Height	Total No. of Sections	Total # of Struts (When lite section is the top section. If not see the notice at the right)	Jamb Brkts/ Side
6'-0"	3	5	3
6'-0"	4	6	3
6'-3"	4	6	3
6'-6"	4	6	4
6'-9"	4	6	4
7'-0"	4	6	4
7'-3"	4	6	4
7'-6"	4	6	4
7'-6"	5	8	4
7'-9"	4	6	4
7'-9"	5	8	4
8'-0"	4	6	4
8'-0"	5	8	4

Maximum section height is 24 in.

Maximum door height is 16 ft.

All doors, even those above the tested height, are available with jamb brackets or commercial full angle. The maximum spacing of the jamb brackets/track clips should be maintained.

**NOTICE:**

These drawings are a supplement to the installation instructions for a standard door and only covers those procedures that vary from standard door installation. If these specific procedures are not followed, the door may not perform as designed.

**NOTICE:**

The lite section of this door may be replaced with a section with another lite style or a solid section. In either case the strut and stile configuration should remain the same.

**NOTICE:**

Only one lite section per door is permitted. The lite section can be used anywhere except for the bottom section. If the lite section is not the top section then the struts must be located as shown in the STRUT CONFIGURATION on sheet 3.

## IMPACT RESISTANT

FL #16650.10



320 Sycamore  
Wauseon, Ohio 43567  
© Copyright 2014

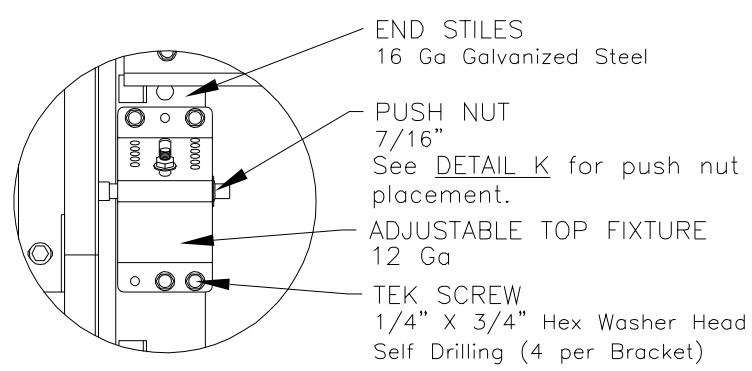
**DESCRIPTION:**

10' 2" PAN 2000 SERIES W/LITES WIND  
LOAD SECTIONAL DOOR  
DESIGN PRESSURE +35.0/-39.0 PSF

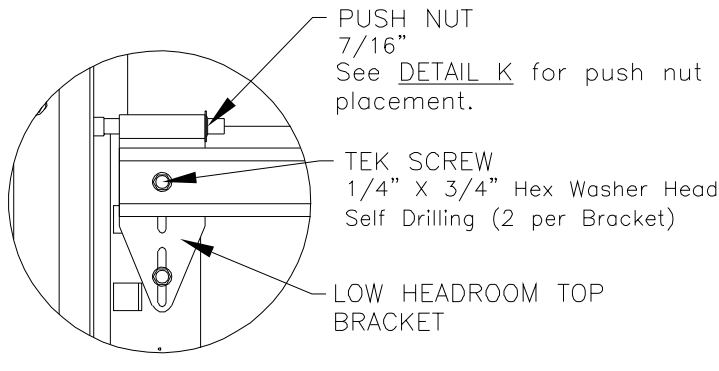
<b>DRAWING NO.:</b> WL-2000-0122-08-35-39L	<b>REV.</b> E
<b>DRAWN BY:</b> MVS	<b>DATE DRAWN:</b> 4/4/18
<b>MODEL(S):</b> See Sheet 3	<b>REV. DATE:</b> 8/30/23
<b>SHEET: 1 OF 4</b>	

John E. Scates, P.E.  
2560 King Arthur Blvd. Ste 124-54  
Lewisville, Texas 75056  
Florida P.E. # 51737

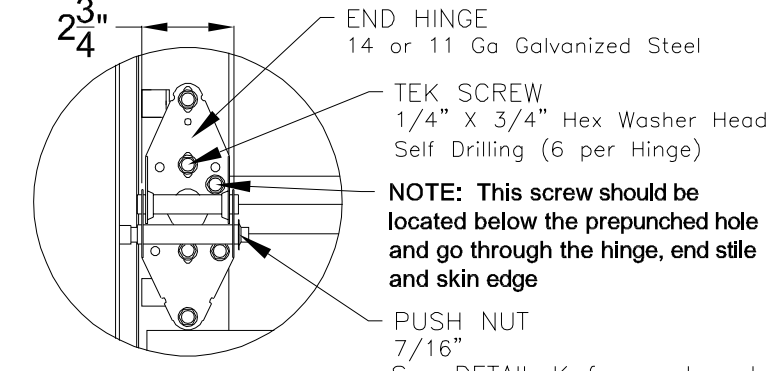
Printed copies of this document are not considered signed and sealed and the signature must be verified on any electronic copies.



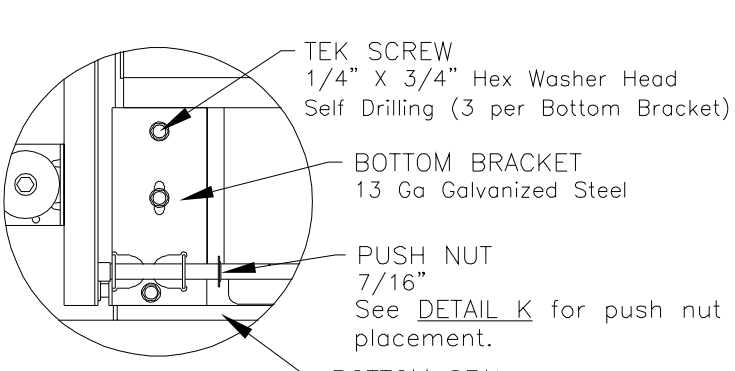
DETAIL A



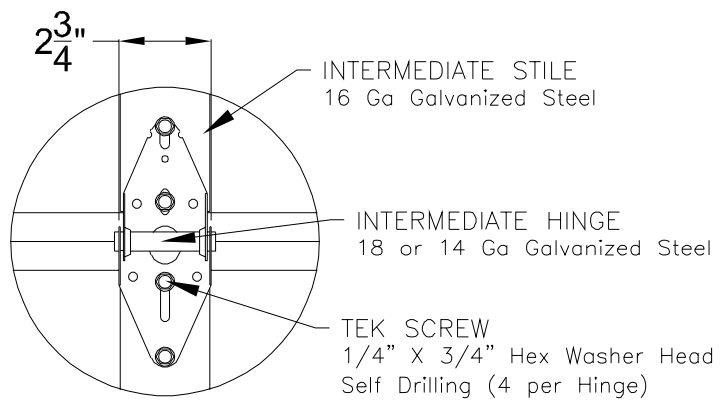
LOW HEADROOM TOP BRACKET



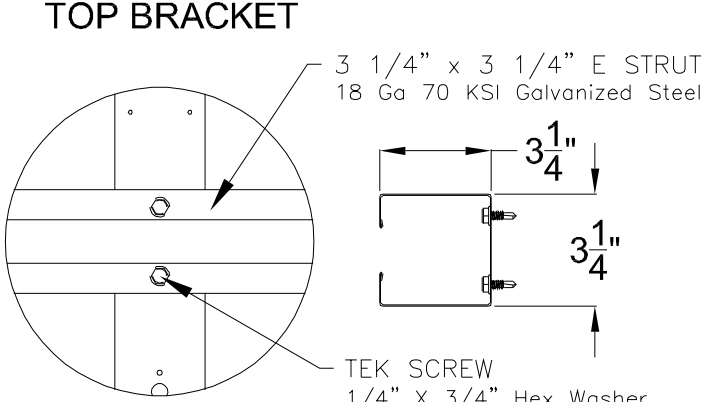
DETAIL B



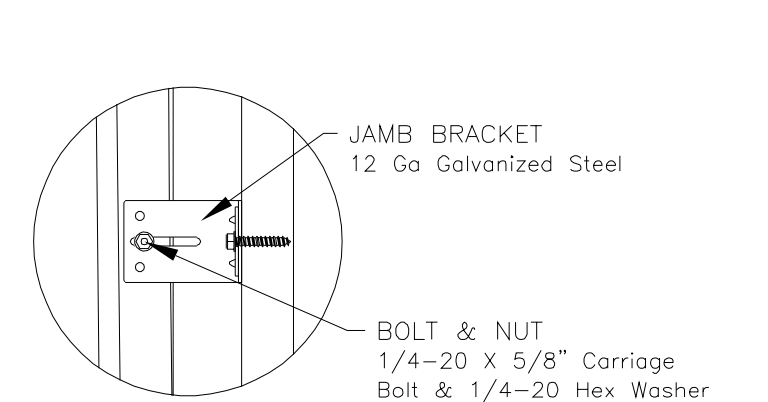
DETAIL C



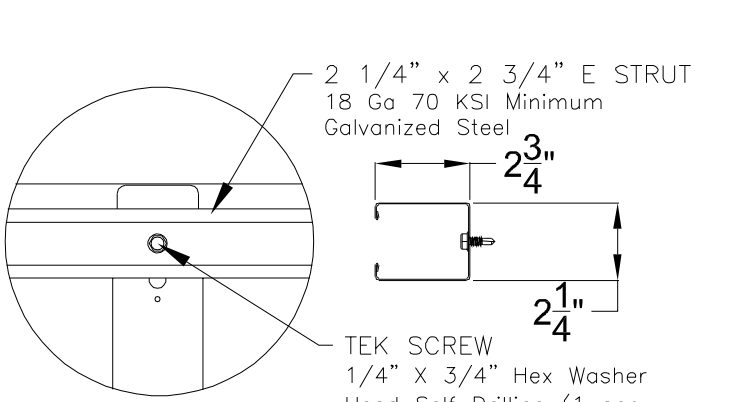
DETAIL D



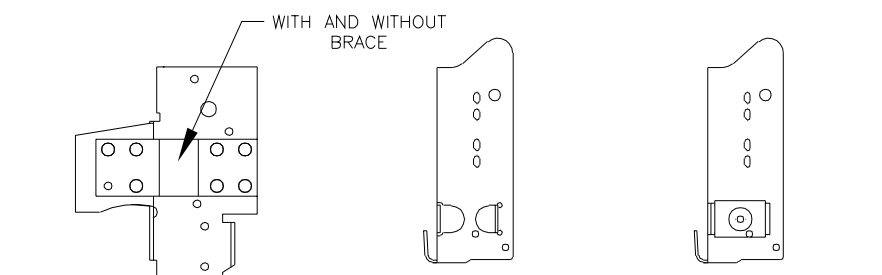
DETAIL E



DETAIL F



DETAIL J



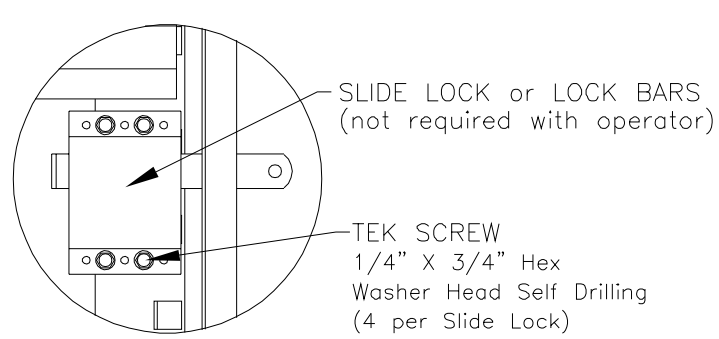
RESIDENTIAL & LIGHT COMMERCIAL For Low Headroom With 2" Track and Single End Stiles

COMMERCIAL For Standard, High & Vertical Lift With 2" Track and Single End Stiles

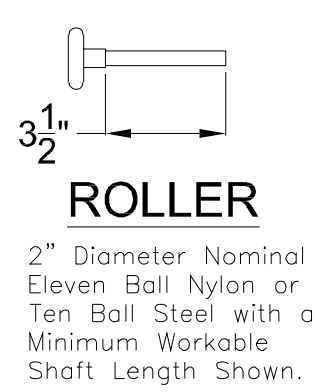
COMMERCIAL For Standard, High & Vertical Lift With 3" Track and Single End Stiles

ALTERNATE BOTTOM BRACKETS

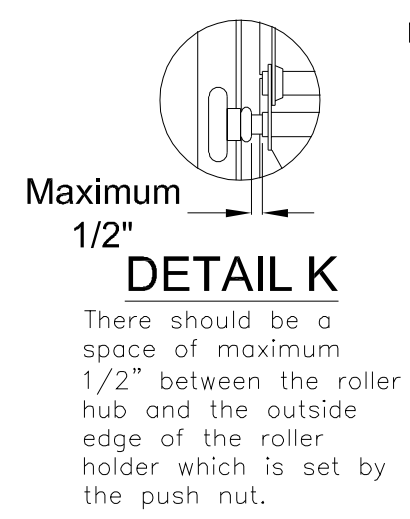
NOTE: The bottom bracket tested (shown in DETAIL C) is the lightest bracket available.



DETAIL G



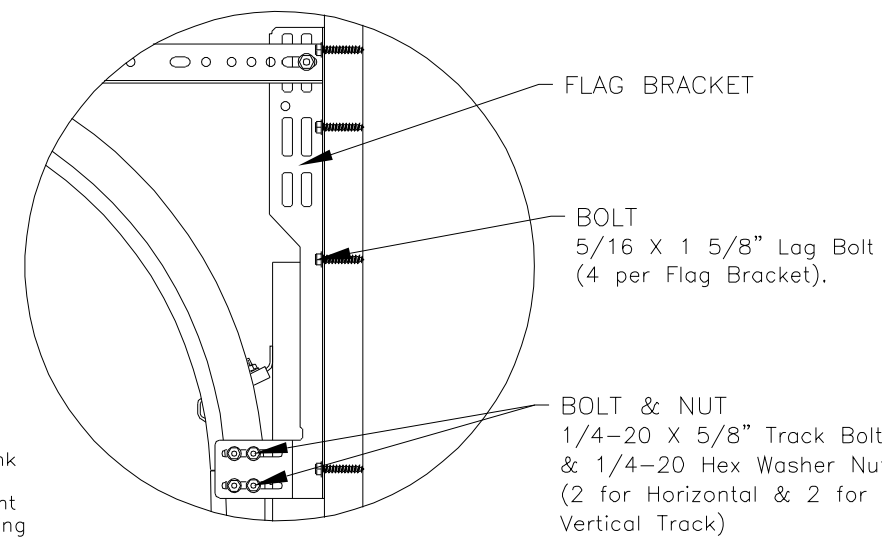
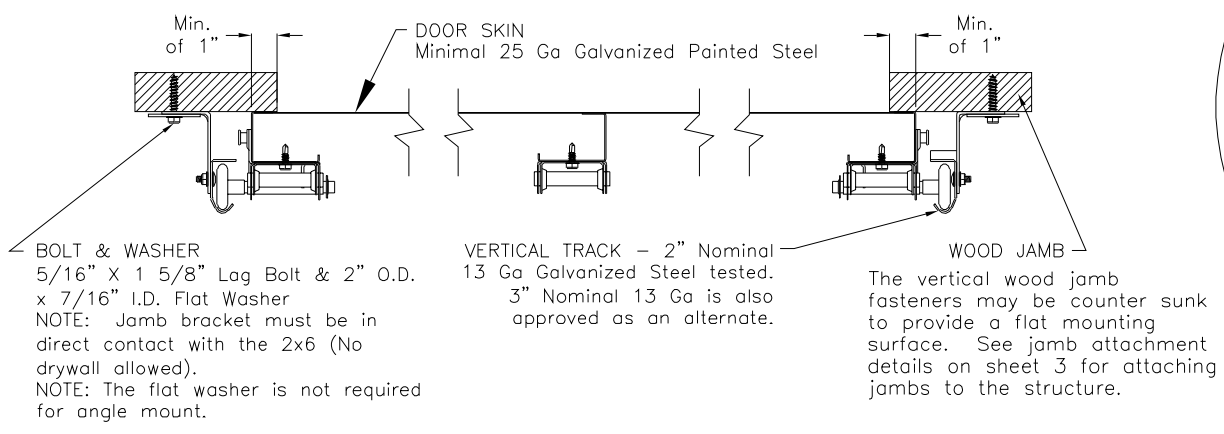
ROLLER



DETAIL K

NOTE: Details on some views omitted for clarity.


Double end stiles and end hardware may be provided on wider or heavier doors.



DETAIL H

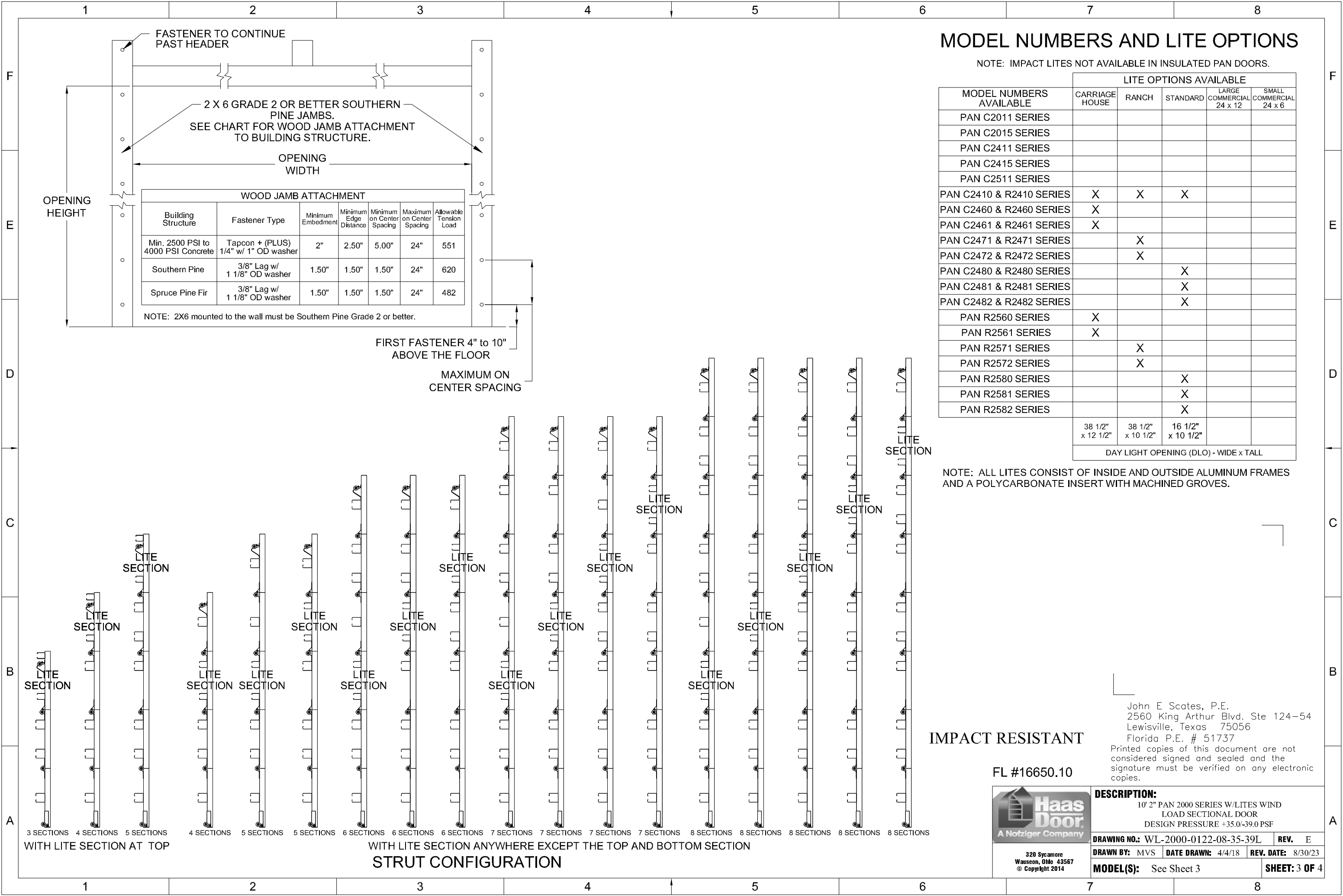
IMPACT RESISTANT

FL #16650.10

 A Nofziger Company		<b>DESCRIPTION:</b> 10' 2" PAN 2000 SERIES W/LITES WIND LOAD SECTIONAL DOOR DESIGN PRESSURE +35.0/-39.0 PSF	
<b>DRAWING NO.:</b> WL-2000-0122-08-35-39L		<b>REV.:</b> E	
<b>DRAWN BY:</b> MVS	<b>DATE DRAWN:</b> 4/4/18	<b>REV. DATE:</b> 8/30/23	
<b>MODEL(S):</b> See Sheet 3			<b>SHEET: 2 OF 4</b>

John E. Scates, P.E.  
2560 King Arthur Blvd. Ste 124-54  
Lewisville, Texas 75056  
Florida P.E. # 51737

Printed copies of this document are not considered signed and sealed and the signature must be verified on any electronic copies.



MODEL NUMBERS AND LITE OPTIONS


NOTE: IMPACT LITES NOT AVAILABLE IN INSULATED PAN DOORS.

MODEL NUMBERS AVAILABLE	LITE OPTIONS AVAILABLE				
	CARRIAGE HOUSE	RANCH	STANDARD	LARGE COMMERCIAL 24 x 12	SMALL COMMERCIAL 24 x 6
PAN C2011 SERIES					
PAN C2015 SERIES					
PAN C2411 SERIES					
PAN C2415 SERIES					
PAN C2511 SERIES					
PAN C2410 & R2410 SERIES	X	X	X		
PAN C2460 & R2460 SERIES	X				
PAN C2461 & R2461 SERIES	X				
PAN C2471 & R2471 SERIES		X			
PAN C2472 & R2472 SERIES		X			
PAN C2480 & R2480 SERIES			X		
PAN C2481 & R2481 SERIES			X		
PAN C2482 & R2482 SERIES			X		
PAN R2560 SERIES	X				
PAN R2561 SERIES	X				
PAN R2571 SERIES		X			
PAN R2572 SERIES		X			
PAN R2580 SERIES			X		
PAN R2581 SERIES			X		
PAN R2582 SERIES			X		
	38 1/2" x 12 1/2"	38 1/2" x 10 1/2"	16 1/2" x 10 1/2"		
DAY LIGHT OPENING (DLO) - WIDE x TALL					

NOTE: ALL LITES CONSIST OF INSIDE AND OUTSIDE ALUMINUM FRAMES AND A POLYCARBONATE INSERT WITH MACHINED GROVES.

IMPACT RESISTANT

FL #16650.10

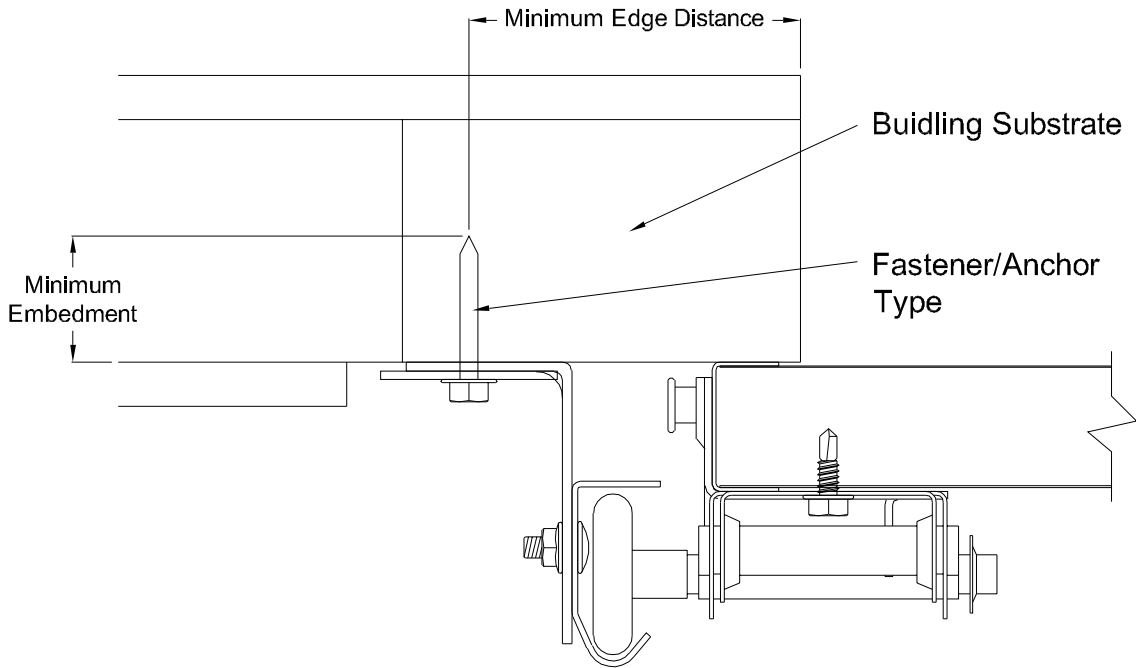


220 Sycamore  
Wauseon, Ohio 43567  
© Copyright 2014

**DESCRIPTION:**  
10' 2" PAN 2000 SERIES W/LITES WIND  
LOAD SECTIONAL DOOR  
DESIGN PRESSURE +35.0/-39.0 PSF

<b>DRAWING NO.:</b> WL-2000-0122-08-35-39L	<b>REV.</b> E
<b>DRAWN BY:</b> MVS	<b>DATE DRAWN:</b> 4/4/18
<b>REV. DATE:</b> 8/30/23	
<b>MODEL(S):</b> See Sheet 3	<b>SHEET: 3 OF 4</b>

John E. Scates, P.E.  
2560 King Arthur Blvd. Ste 124-54  
Lewisville, Texas 75056  
Florida P.E. # 51737  
Printed copies of this document are not considered signed and sealed and the signature must be verified on any electronic copies.



## Direct Mounting Detail

Bracket Mount Shown, Reverse and Continuous Angle Mount, Reverse and Continuous Angle Clip Mount Also Approved As Alternate.

DIRECT MOUNTING					
Building Substrate	Fastener Type	Minimum Embedment	Minimum Fastener Length	Minimum Edge Distance	Minimum on Center Spacing
Southern Pine (SYP)	5/16" Dia. Lag Screw w/1-1/8" OD Flat Washer (shall conform to ANSI/ASME standard B18.2.1)	-	1-5/8"	1/2"	-
Spruce-Pine-Fur (SPF)	5/16" Dia. Lag Screw w/1-1/8" OD Flat Washer (shall conform to ANSI/ASME standard B18.2.1)	-	2-1/4"	1/2"	-
Min. 2500 PSI Concrete	3/8" Dia. Ankr-Tite CCAT w/1-1/8" OD Flat Washer (by Wej-It Fastening Systems)	2-3/8"	-	2-1/2"	6"
Min. 2500 PSI Concrete	1/4" Dia. Tapcon+ by ITW w/1-1/8" OD Flat Washer	2"	-	2-1/2"	5"
Min. 2500 PSI Concrete	1/4" Dia. Wedge-Bolt+ by Powers Fasteners w/1-1/8" OD Flat Washer	1-3/4"	-	2-1/2"	5"
Min. 2500 PSI Concrete	1/4" Dia. Red Head TruBolt wedge anchor by ITW w/1-1/8" OD Flat Washer	1-3/4"	-	2-1/2"	5"
1/8" GA Steel Minimum	5/16"-12 Tek Self-Drilling Screw w/1-1/8" OD Flat Washer	-	1"	-	-
3/16" GA Steel	Fillet Weld	See DASMA Technical Data Sheet TDS-161, section G			

NOTE: Doors are available with jamb brackets or commercial full angle. In either case the the maximum spacing noted on sheet 1 should be maintained for the brackets, clips and fasteners for direct mount.

IMPACT RESISTANT

FL #16650.10



320 Sycamore  
Wauseon, Ohio 43567  
© Copyright 2014

John E. Scates, P.E.  
2560 King Arthur Blvd. Ste 124-54  
Lewisville, Texas 75056  
Florida P.E. # 51737  
Printed copies of this document are not considered signed and sealed and the signature must be verified on any electronic copies.

DESCRIPTION:			
10' 2" PAN 2000 SERIES W/LITES WIND LOAD SECTIONAL DOOR DESIGN PRESSURE +35.0/-39.0 PSF			
DRAWING NO.: WL-2000-0122-08-35-39L			REV. E
DRAWN BY: MVS	DATE DRAWN: 4/4/18	REV. DATE: 8/30/23	
MODEL(S): See Sheet 3			SHEET: 4 OF 4