

This product has been evaluated per ANSI/DASMA 108 for static air pressure.

Model Number										
Door Widths Up To	Design Pressures		End Stile	Minimum Center		Minimum Center		Minimum Center		Impact Resistant
	+ psf	- psf		Stiles	Hinges	Stiles	Hinges	Stiles	Hinges	
8'-2"	26.5	-30.0	Single	1	1	1	1	1	1	NO
9'-2"	23.6	-26.7	Single	1	1	1	1	1	1	NO
10'-2"	21.3	-24.1	Single	2	2	1	1	2	2	NO
12'-2"	14.8	-16.8	Single	2	2	2	2	2	2	NO
14'-2"	10.9	-12.4	Single	4	4	2	2	3	3	NO

This product is designed and sold by PSF. The AHJ or Engineer of Record is responsible for determining the PSF required for any given site.

Jamb bracket quantities shown are for use with grade 2 or better southern pine jambs.

Supporting structural elements are to be designed by a registered professional engineer for specific wind loads.

Door Height	Total # of Sections	Total # of Struts	Jamb Brkts per Side
6'-0"	3	3	2
6'-0"	4	4	2
6'-3"	4	4	2
6'-6"	4	4	3
6'-9"	4	4	3
7'-0"	4	4	3
7'-3"	4	4	3
7'-6"	5	5	3
7'-9"	4	4	3
7'-9"	5	5	3
8'-0"	4	4	3
8'-0"	5	5	3


Maximum section height is 24 in.

Maximum door height is 16 ft.

All doors, even those above the tested height, are available with jamb brackets or commercial full angle. The maximum spacing of the jamb brackets/track clips should be maintained.

**NOTICE:**  
These drawings are a supplement to the installation instructions for a standard door and only covers those procedures that vary from standard door installation. If these specific procedures are not followed, the door may not perform as designed.

FL #16650.8

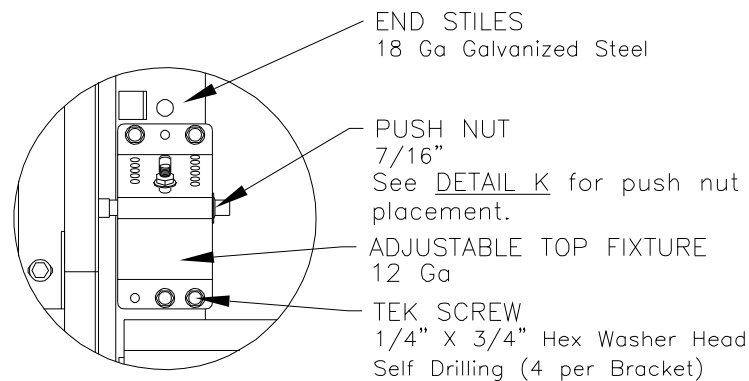


**DESCRIPTION:**  
10' 2" PAN 2000 SERIES WIND LOAD  
SECTIONAL DOOR  
DESIGN PRESSURE +21.3/-24.1 PSF

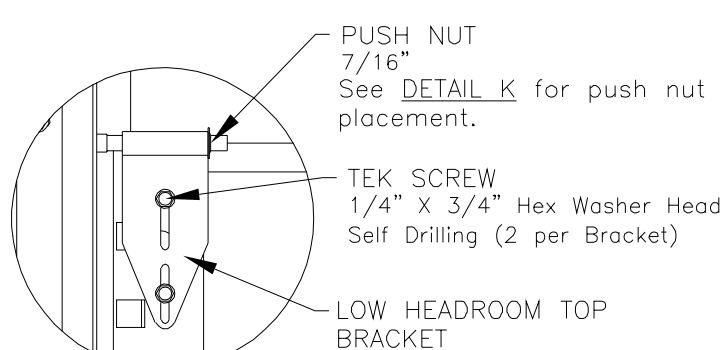
<b>DRAWING NO.:</b> WL-2000-0122-08-21-24		<b>REV.</b> G
<b>DRAWN BY:</b> MVS	<b>DATE DRAWN:</b> 7/6/16	<b>REV. DATE:</b> 8/23/23
<b>MODEL(S):</b> See Sheet 3		<b>SHEET: 1 OF 4</b>

220 Sycamore  
Wauseon, Ohio 43567  
© Copyright 2014

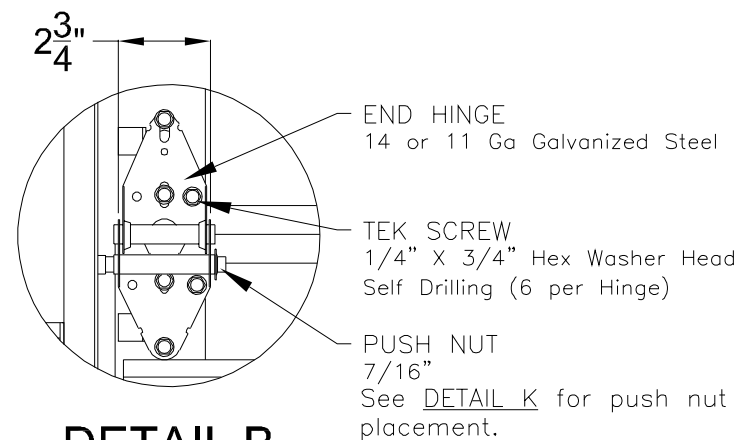
John E. Scates, P.E.  
2560 King Arthur Blvd. Ste 124-54  
Lewisville, Texas 75056  
Florida P.E. # 51737  
Printed copies of this document are not considered signed and sealed and the signature must be verified on any electronic copies.



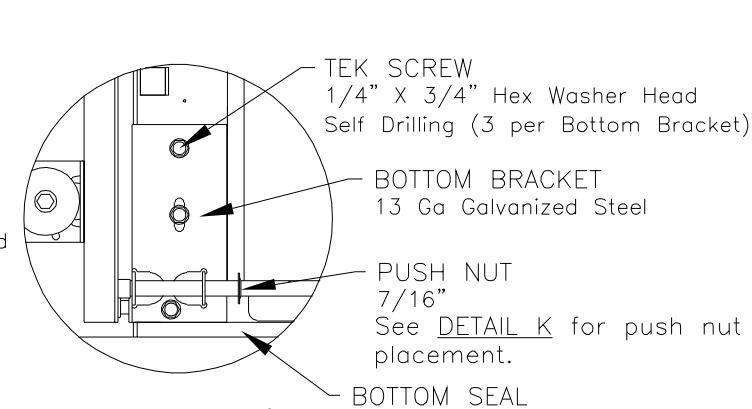
**DETAIL A**



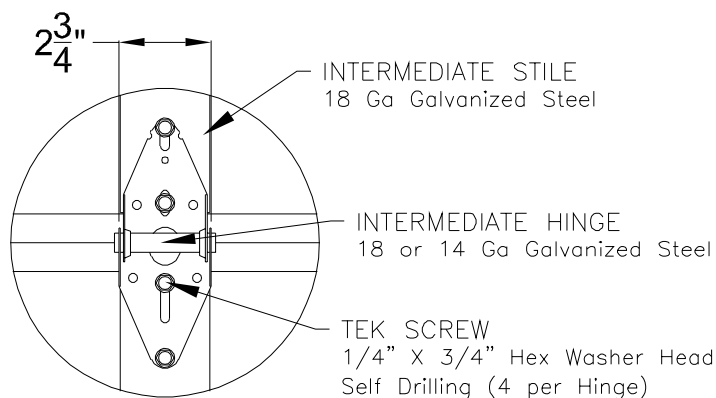
**LOW HEADROOM  
TOP BRACKET**



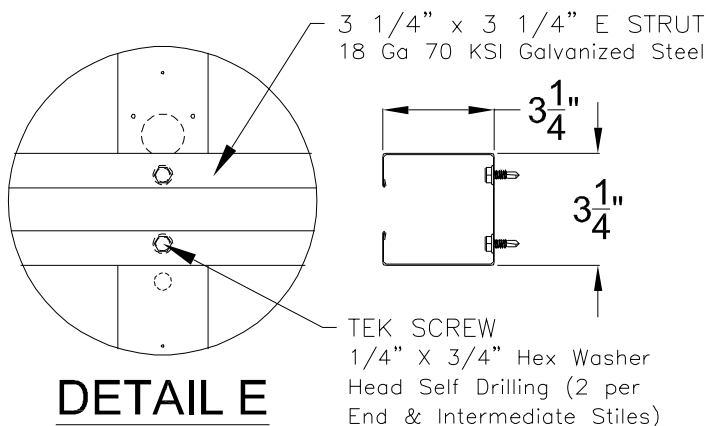
**DETAIL B**



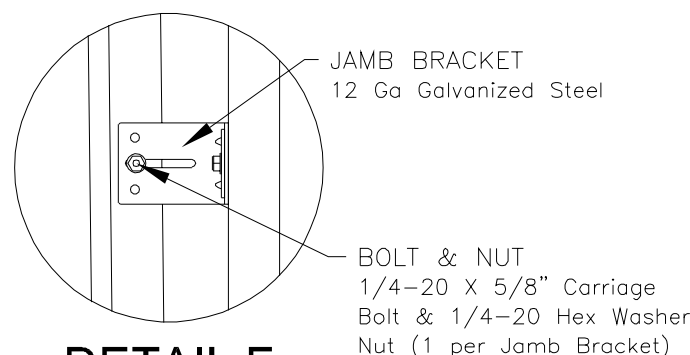
**DETAIL C**



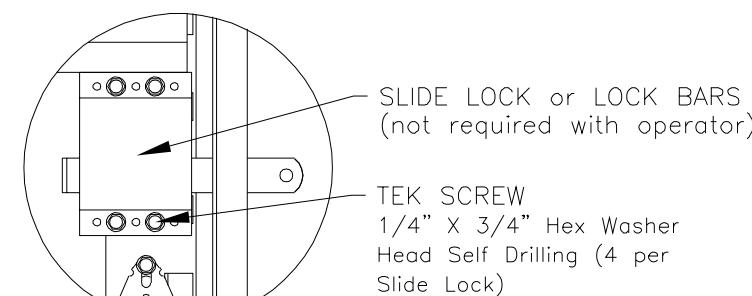
**DETAIL D**



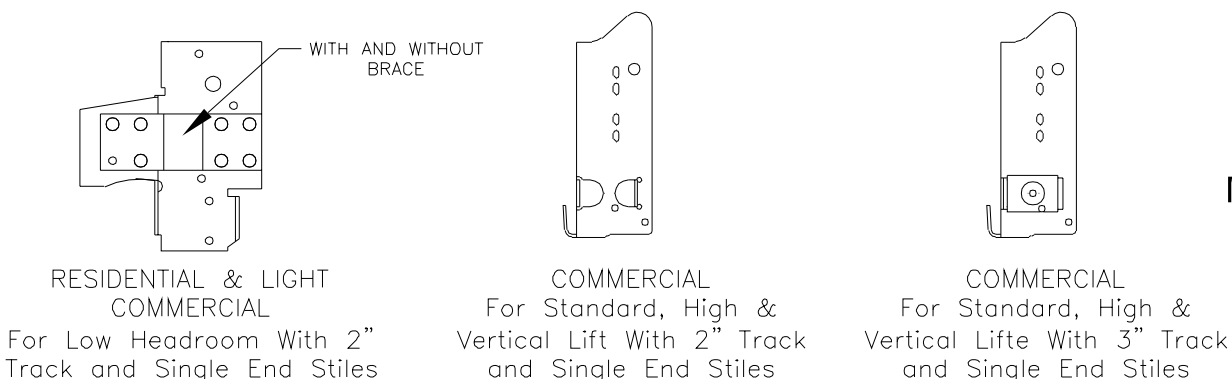
**DETAIL E**



**DETAIL F**

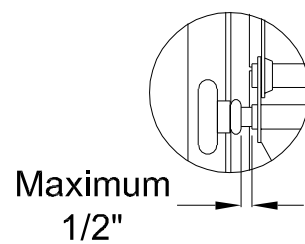
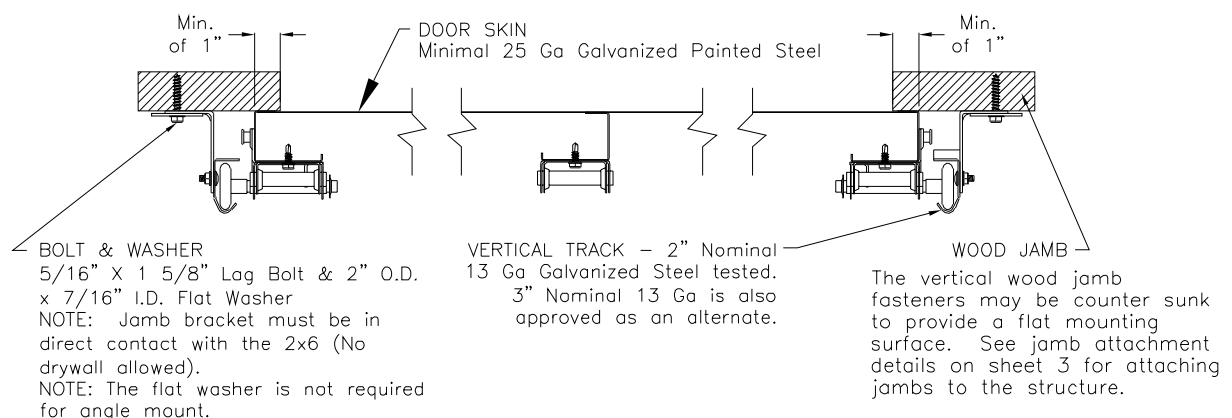


**DETAIL G**



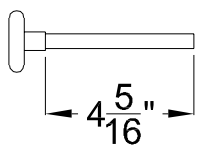
**ALTERNATE BOTTOM BRACKETS**

NOTE: The bottom bracket tested (shown in DETAIL C) is the lightest bracket available.



**DETAIL K**

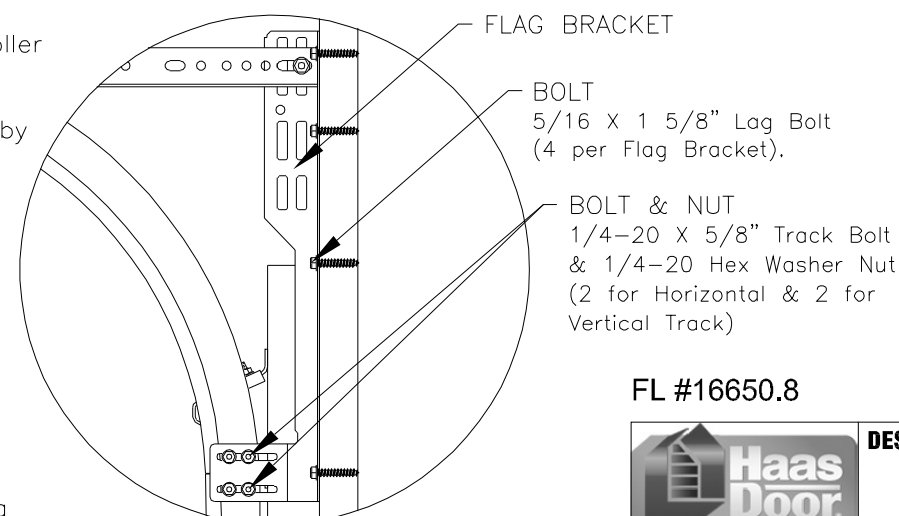
There should be a space of maximum 1/2" between the roller hub and the outside edge of the roller holder which is set by the push nut.



**ROLLER**

2" Diameter Nominal Eleven Ball Nylon or Ten Ball Steel with a Minimum Workable Shaft Length Shown.

NOTE: Details on some views omitted for clarity.  
Double end stiles and end hardware may be provided on wider or heavier doors.



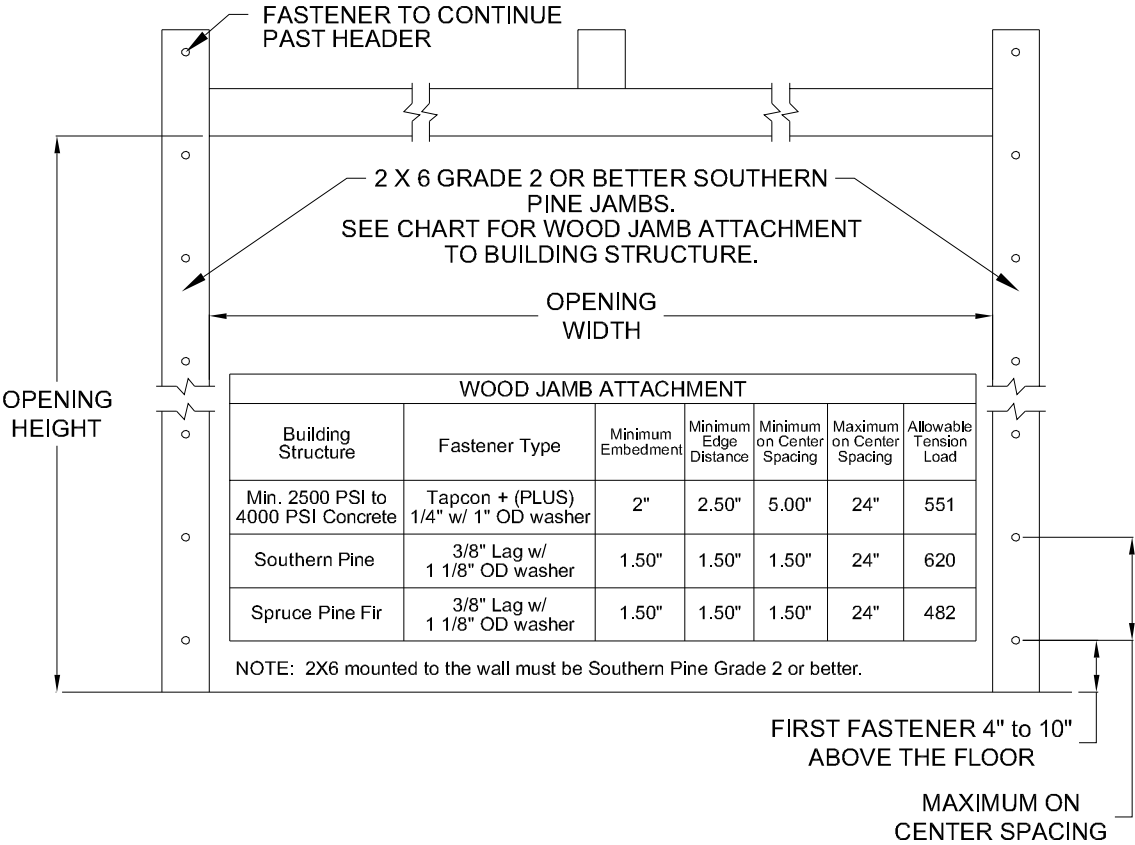
**DETAIL H**

FL #16650.8



220 Sycamore  
Wauseon, Ohio 43567  
© Copyright 2014

<b>DESCRIPTION:</b> 10' 2" PAN 2000 SERIES WIND LOAD SECTIONAL DOOR DESIGN PRESSURE +21.3/-24.1 PSF			
<b>DRAWING NO.:</b> WL-2000-0122-08-21-24	<b>REV.</b> G		
<b>DRAWN BY:</b> MVS	<b>DATE DRAWN:</b> 7/6/16	<b>REV. DATE:</b> 8/23/23	
<b>MODEL(S):</b> See Sheet 3			<b>SHEET: 2 OF 4</b>




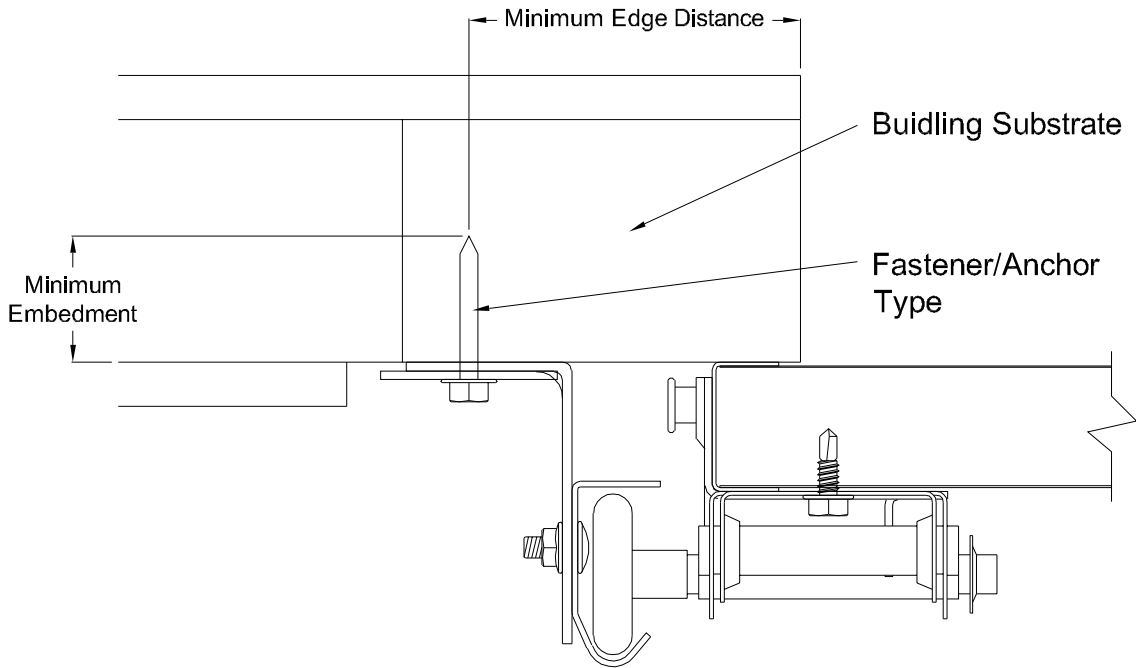
MODEL NUMBERS

MODEL NUMBERS AVAILABLE
PAN C2011 SERIES
PAN C2015 SERIES
PAN C2411 SERIES
PAN C2415 SERIES
PAN C2511 SERIES
PAN C2410 & R2410 SERIES
PAN C2460 & R2460 SERIES
PAN C2461 & R2461 SERIES
PAN C2470 & R2470 SERIES
PAN C2471 & R2471 SERIES
PAN C2472 & R2472 SERIES
PAN C2480 & R2480 SERIES
PAN C2481 & R2481 SERIES
PAN C2482 & R2482 SERIES
PAN R2560 SERIES
PAN R2561 SERIES
PAN R2570 SERIES
PAN R2571 SERIES
PAN R2572 SERIES
PAN R2580 SERIES
PAN R2581 SERIES
PAN R2582 SERIES

John E. Scates, P.E.  
2560 King Arthur Blvd. Ste 124-54  
Lewisville, Texas 75056  
Florida P.E. # 51737  
Printed copies of this document are not considered signed and sealed and the signature must be verified on any electronic copies.

FL #16650.8

 A Nofziger Company  320 Sycamore Wauseon, Ohio 43567 © Copyright 2014	<b>DESCRIPTION:</b> 10' 2" PAN 2000 SERIES WIND LOAD SECTIONAL DOOR DESIGN PRESSURE +21.3/-24.1 PSF		
	<b>DRAWING NO.:</b> WL-2000-0122-08-21-24		<b>REV.</b> G
	<b>DRAWN BY:</b> MVS	<b>DATE DRAWN:</b> 7/6/16	<b>REV. DATE:</b> 8/23/23
	<b>MODEL(S):</b> See Sheet 3		<b>SHEET: 3 OF 4</b>



## Direct Mounting Detail


Bracket Mount Shown, Reverse and Continuous Angle Mount, Reverse and Continuous Angle Clip Mount Also Approved As Alternate.

DIRECT MOUNTING					
Building Substrate	Fastener Type	Minimum Embedment	Minimum Fastener Length	Minimum Edge Distance	Minimum on Center Spacing
Southern Pine (SYP)	5/16" Dia. Lag Screw w/1-1/8" OD Flat Washer (shall conform to ANSI/ASME standard B18.2.1)	-	1-5/8"	1/2"	-
Spruce-Pine-Fur (SPF)	5/16" Dia. Lag Screw w/1-1/8" OD Flat Washer (shall conform to ANSI/ASME standard B18.2.1)	-	2-1/4"	1/2"	-
Min. 2500 PSI Concrete	3/8" Dia. Ankr-Tite CCAT w/1-1/8" OD Flat Washer (by Wej-It Fastening Systems)	2-3/8"	-	2-1/2"	6"
Min. 2500 PSI Concrete	1/4" Dia. Tapcon+ by ITW w/1-1/8" OD Flat Washer	2"	-	2-1/2"	5"
Min. 2500 PSI Concrete	1/4" Dia. Wedge-Bolt+ by Powers Fasteners w/1-1/8" OD Flat Washer	1-3/4"	-	2-1/2"	5"
Min. 2500 PSI Concrete	1/4" Dia. Red Head TruBolt wedge anchor by ITW w/1-1/8" OD Flat Washer	1-3/4"	-	2-1/2"	5"
1/8" GA Steel Minimum	5/16"-12 Tek Self-Drilling Screw w/1-1/8" OD Flat Washer	-	1"	-	-
3/16" GA Steel	Fillet Weld	See DASMA Technical Data Sheet TDS-161, section G			

NOTE: Doors are available with jamb brackets or commercial full angle. In either case the the maximum spacing noted on sheet 1 should be maintained for the brackets, clips and fasteners for direct mount.

John E. Scates, P.E.  
2560 King Arthur Blvd. Ste 124-54  
Lewisville, Texas 75056  
Florida P.E. # 51737  
Printed copies of this document are not considered signed and sealed and the signature must be verified on any electronic copies.

FL #16650.8

 A Nofziger Company  320 Sycamore Wauseon, Ohio 43567 © Copyright 2014	<b>DESCRIPTION:</b> 10' 2" PAN 2000 SERIES WIND LOAD SECTIONAL DOOR DESIGN PRESSURE +21.3/-24.1 PSF				
	<b>DRAWING NO.:</b> WL-2000-0122-08-21-24				<b>REV.</b> G
	<b>DRAWN BY:</b> MVS	<b>DATE DRAWN:</b> 7/6/16	<b>REV. DATE:</b> 8/23/23		
	<b>MODEL(S):</b> See Sheet 3				<b>SHEET: 4 OF 4</b>