

This product has been evaluated per ANSI/DASMA 108 for static air pressure.

				Model Number						
						PAN C2410 & R2410 SERIES		PAN C2011 SERIES		
						PAN C2460 & R2460 SERIES				
						PAN C2461 & R2461 SERIES				
						PAN C2470 & R2470 SERIES				
						PAN C2471 & R2471 SERIES				
				PAN C2480 & R2480 SERIES		PAN C2472 & R2472 SERIES		PAN C2015 SERIES		
				PAN C2481 & R2481 SERIES		PAN R2560 SERIES				
				PAN C2482 & R2482 SERIES		PAN R2561 SERIES				
				PAN R2580 SERIES		PAN R2570 SERIES				
PAN R2581 SERIES		PAN R2571 SERIES								
PAN R2582 SERIES		PAN R2572 SERIES		PAN C2411 SERIES						
				PAN C2415 SERIES						
				PAN C2511 SERIES						
Door Widths Up To	Design Pressures		End Stile	Minimum Center		Minimum Center		Minimum Center		Impact Resistant
	+ psf	- psf		Stiles	Hinges	Stiles	Hinges	Stiles	Hinges	
8'-2"	27.8	-31.4	Single	1	1	1	1	1	1	NO
9'-2"	24.8	-28.0	Single	1	1	1	1	1	1	NO
10'-2"	20.1	-22.7	Single	2	2	1	1	2	2	NO
12'-2"	14.0	-15.9	Single	2	2	2	2	2	2	NO

This product is designed and sold by PSF. The AHJ or Engineer of Record is responsible for determining the PSF required for any given site.

Jamb bracket quantities shown are for use with grade 2 or better southern pine jambs.

Supporting structural elements are to be designed by a registered professional engineer for specific wind loads.

Door Height	Total No. of Sections	Total # of Struts (When lite section is the top section. If not see the notice at the right)	Jamb Brkts/Side
6'-0"	4	3	3
6'-3"	4	3	3
6'-6"	4	3	3
6'-9"	4	3	3
7'-0"	4	3	3
7'-6"	5	4	4
7'-9"	5	4	4
8'-0"	5	4	4

Maximum section height is 21 in.

Maximum door height is 16 ft.

All doors, even those above the tested height, are available with jamb brackets or commercial full angle. The maximum spacing of the jamb brackets/track clips should be maintained.

**NOTICE:**

These drawings are a supplement to the installation instructions for a standard door and only covers those procedures that vary from standard door installation. If these specific procedures are not followed, the door may not perform as designed.

**NOTICE:**

The lite section of this door may be replaced with a section with another lite style or a solid section. In either case the strut and stile configuration should remain the same.


**NOTICE:**

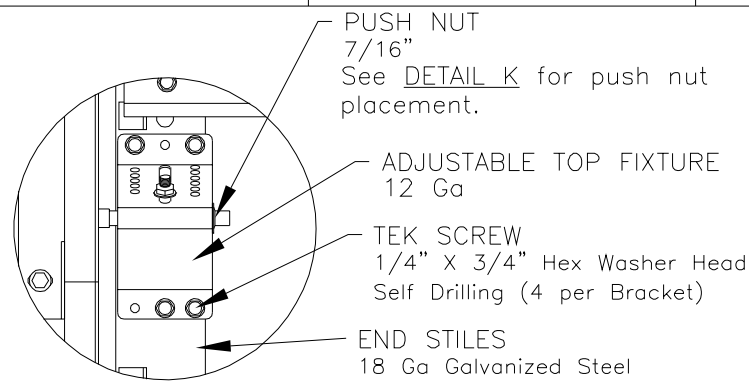
Only one lite section per door is permitted. The lite section can be used anywhere except for the bottom section. If the lite section is not the top section then the struts must be located as shown in the STRUT CONFIGURATION on sheet 3.

John E. Scates, P.E.  
2560 King Arthur Blvd. Ste 124-54  
Lewisville, Texas 75056  
Florida P.E. # 51737

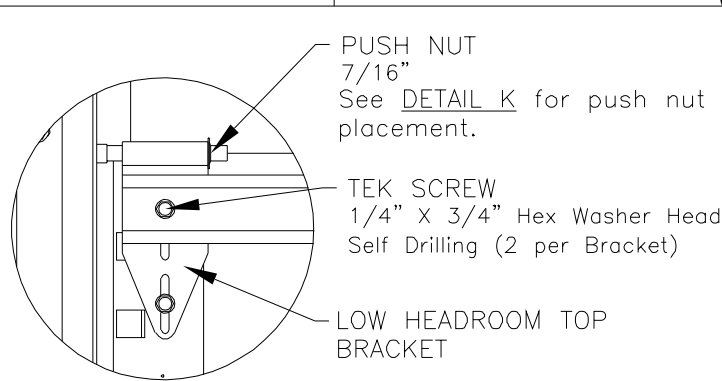
Printed copies of this document are not considered signed and sealed and the signature must be verified on any electronic copies.

FL #16650.2

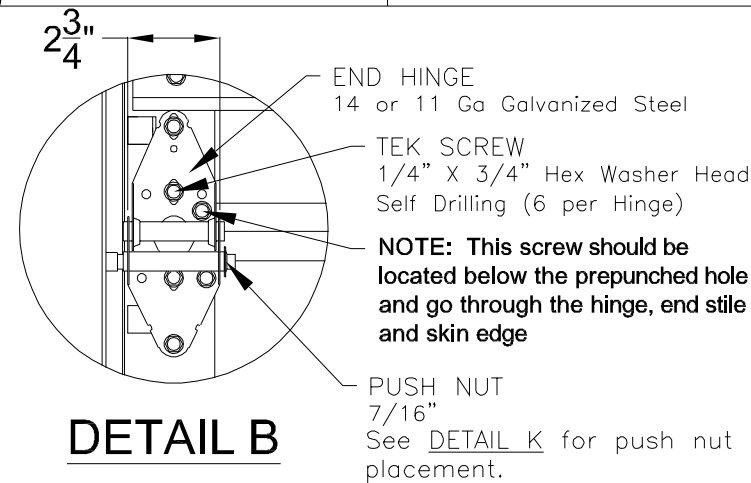
 <b>Haas Door</b> A Nofziger Company	<b>DESCRIPTION:</b> 9' 2" PAN 2000 SERIES W/LITES WIND LOAD SECTIONAL DOOR DESIGN PRESSURE +24.8/-28.0 PSF			
	<b>DRAWING NO.:</b> WL-2000-0110-25-28L			<b>REV.</b> L
320 Sycamore Wauseon, Ohio 43267 © Copyright 2014	<b>DRAWN BY:</b> MVS		<b>DATE DRAWN:</b> 8/14/14	<b>REV. DATE:</b> 8/30/23
	<b>MODEL(S):</b> See Sheet 3			<b>SHEET: 1 OF 4</b>



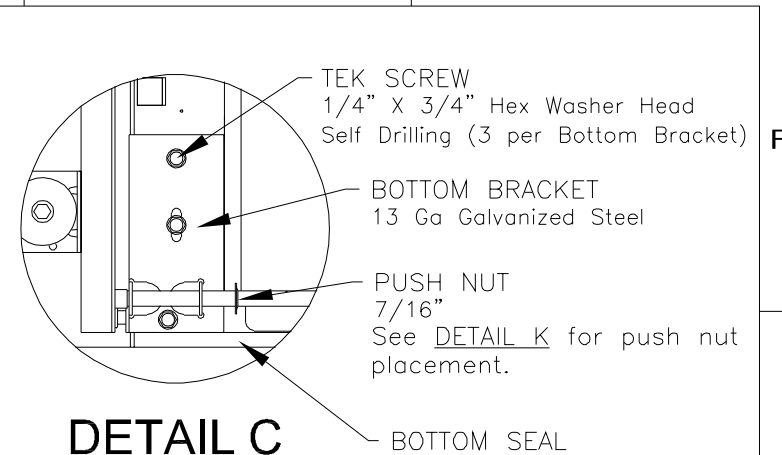
DETAIL A



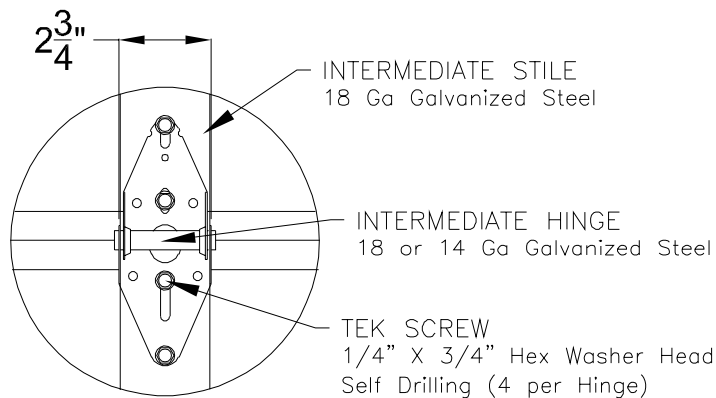
LOW HEADROOM  
TOP BRACKET



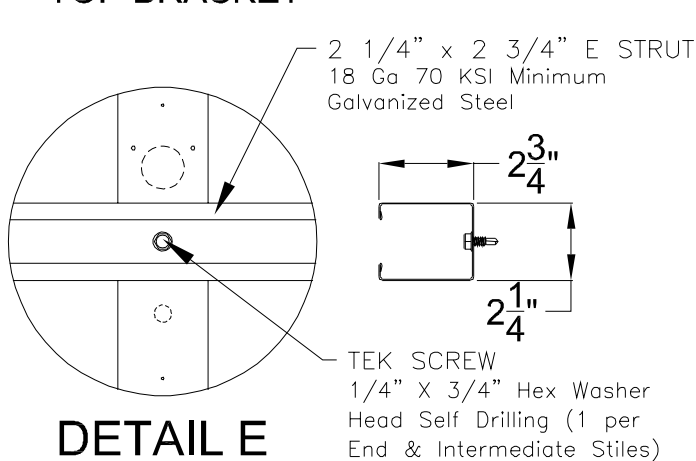
DETAIL B



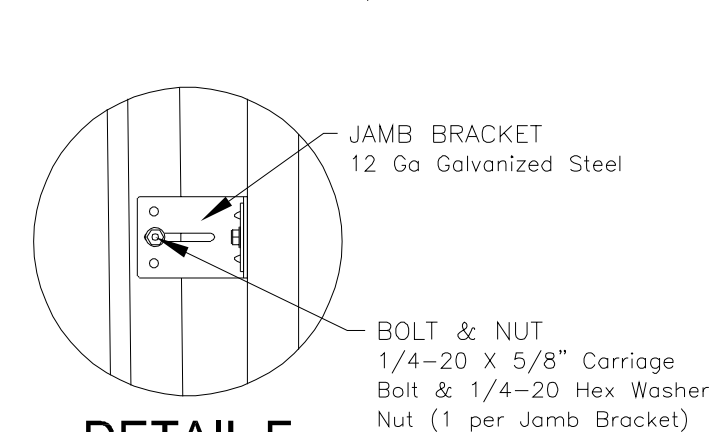
DETAIL C



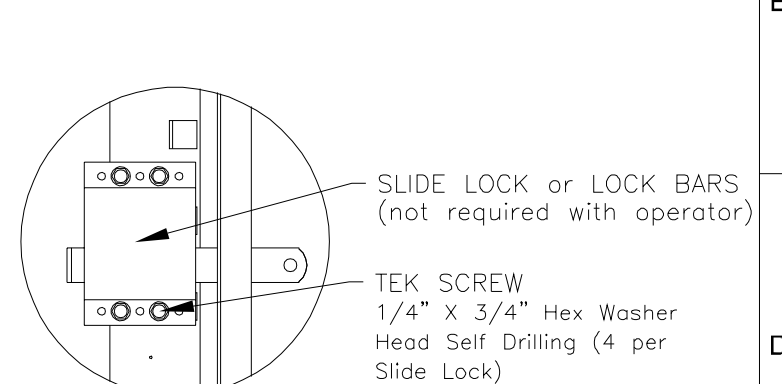
DETAIL D



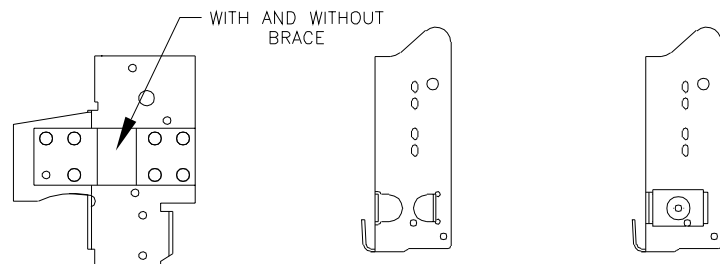
DETAIL E



DETAIL F



DETAIL G



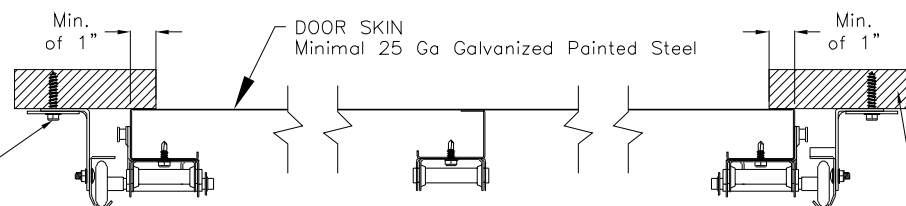
RESIDENTIAL & LIGHT  
COMMERCIAL  
For Low Headroom  
With 2" Track and  
Single End Stiles

COMMERCIAL  
For Standard, High  
& Vertical Lift  
With 2" Track and  
Single End Stiles

COMMERCIAL  
For Standard, High  
& Vertical Lift  
With 3" Track and  
Single End Stiles

## ALTERNATE BOTTOM BRACKETS

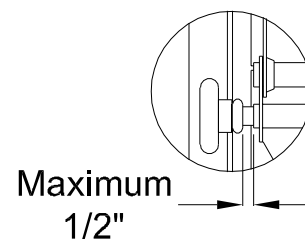
NOTE: The bottom bracket tested (shown in DETAIL C) is the lightest bracket available.



BOLT & WASHER  
5/16" X 1 5/8" Lag Bolt & 2" O.D.  
x 7/16" I.D. Flat Washer  
NOTE: Jamb bracket must be in  
direct contact with the 2x6 (No  
drywall allowed).  
NOTE: The flat washer is not required  
for angle mount.

VERTICAL TRACK - 2" Nominal  
13 Ga Galvanized Steel tested.  
3" Nominal 13 Ga is also  
approved as an alternate.

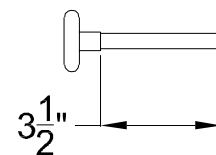
WOOD JAMB  
The vertical wood jamb  
fasteners may be counter sunk  
to provide a flat mounting  
surface. See jamb attachment  
details on sheet 3 for attaching  
jamb to the structure.



Maximum  
1/2"

DETAIL K

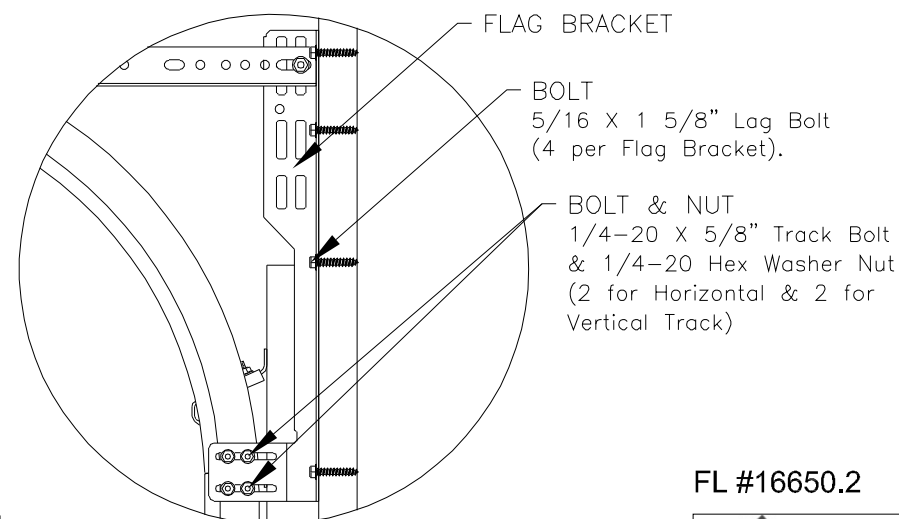
There should be a space of  
maximum 1/2" between the  
roller hub and the outside  
edge of the roller holder  
which is set by the push  
nut.



ROLLER

2" Diameter Nominal  
Eleven Ball Nylon or  
Ten Ball Steel with  
a Minimum Workable  
Shaft Length Shown.

NOTE: Details on some views omitted for clarity.  
Double end stiles and end hardware may be  
provided on wider or heavier doors.



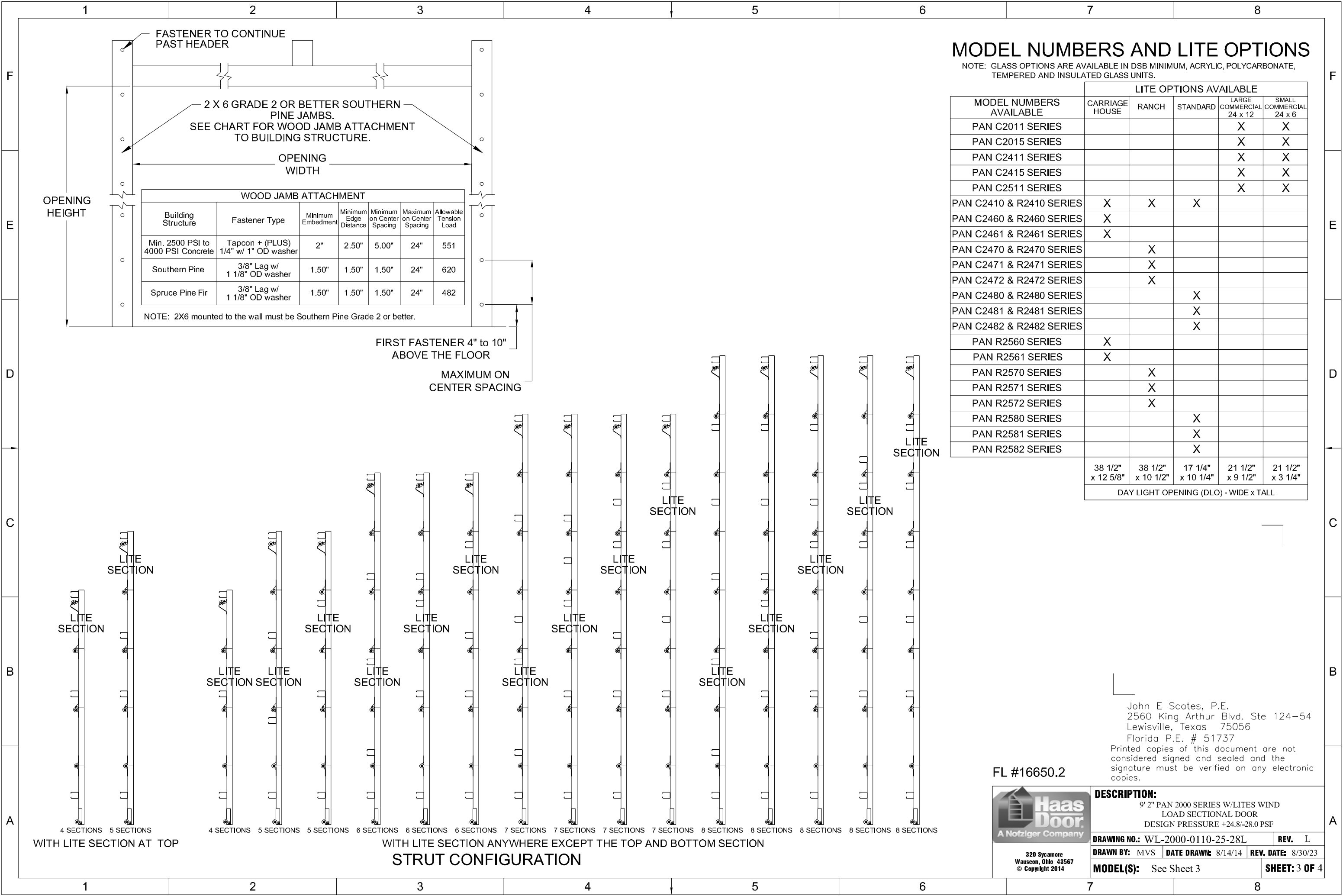
DETAIL H

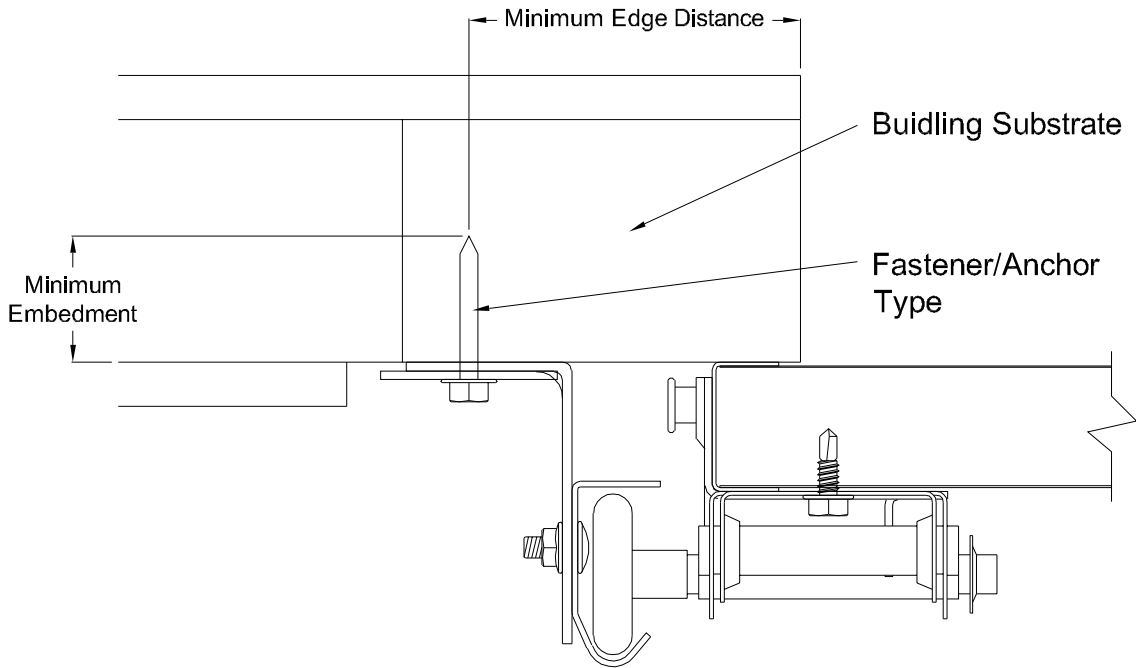
FL #16650.2



<b>DESCRIPTION:</b> 9' 2" PAN 2000 SERIES W/LITES WIND LOAD SECTIONAL DOOR DESIGN PRESSURE +24.8/-28.0 PSF			
<b>DRAWING NO.:</b> WL-2000-0110-25-28L			<b>REV.</b> L
<b>DRAWN BY:</b> MVS		<b>DATE DRAWN:</b> 8/14/14	<b>REV. DATE:</b> 8/30/23
<b>MODEL(S):</b> See Sheet 3			<b>SHEET: 2 OF 4</b>

John E. Scates, P.E.  
2560 King Arthur Blvd. Ste 124-54  
Lewisville, Texas 75056  
Florida P.E. # 51737  
Printed copies of this document are not  
considered signed and sealed and the  
signature must be verified on any electronic  
copies.





## Direct Mounting Detail


Bracket Mount Shown, Reverse and Continuous Angle Mount, Reverse and Continuous Angle Clip Mount Also Approved As Alternate.

DIRECT MOUNTING					
Building Substrate	Fastener Type	Minimum Embedment	Minimum Fastener Length	Minimum Edge Distance	Minimum on Center Spacing
Southern Pine (SYP)	5/16" Dia. Lag Screw w/1-1/8" OD Flat Washer (shall conform to ANSI/ASME standard B18.2.1)	-	1-5/8"	1/2"	-
Spruce-Pine-Fur (SPF)	5/16" Dia. Lag Screw w/1-1/8" OD Flat Washer (shall conform to ANSI/ASME standard B18.2.1)	-	2-1/4"	1/2"	-
Min. 2500 PSI Concrete	3/8" Dia. Ankr-Tite CCAT w/1-1/8" OD Flat Washer (by Wej-It Fastening Systems)	2-3/8"	-	2-1/2"	6"
Min. 2500 PSI Concrete	1/4" Dia. Tapcon+ by ITW w/1-1/8" OD Flat Washer	2"	-	2-1/2"	5"
Min. 2500 PSI Concrete	1/4" Dia. Wedge-Bolt+ by Powers Fasteners w/1-1/8" OD Flat Washer	1-3/4"	-	2-1/2"	5"
Min. 2500 PSI Concrete	1/4" Dia. Red Head TruBolt wedge anchor by ITW w/1-1/8" OD Flat Washer	1-3/4"	-	2-1/2"	5"
1/8" GA Steel Minimum	5/16"-12 Tek Self-Drilling Screw w/1-1/8" OD Flat Washer	-	1"	-	-
3/16" GA Steel	Fillet Weld	See DASMA Technical Data Sheet TDS-161, section G			

NOTE: Doors are available with jamb brackets or commercial full angle. In either case the the maximum spacing noted on sheet 1 should be maintained for the brackets, clips and fasteners for direct mount.

John E. Scates, P.E.  
2560 King Arthur Blvd. Ste 124-54  
Lewisville, Texas 75056  
Florida P.E. # 51737  
Printed copies of this document are not considered signed and sealed and the signature must be verified on any electronic copies.

FL #16650.2

 320 Sycamore Wauseon, Ohio 43567 © Copyright 2014	<b>DESCRIPTION:</b> 9' 2" PAN 2000 SERIES W/LITES WIND LOAD SECTIONAL DOOR DESIGN PRESSURE +24.8/-28.0 PSF				
	<b>DRAWING NO.:</b> WL-2000-0110-25-28L				<b>REV.</b> L
	<b>DRAWN BY:</b> MVS	<b>DATE DRAWN:</b> 8/14/14	<b>REV. DATE:</b> 8/30/23		
	<b>MODEL(S):</b> See Sheet 3				<b>SHEET: 4 OF 4</b>