

This product has been evaluated per ANSI/DASMA 108 for static air pressure.

Model Number										
Door Widths Up To	Design Pressures		End Style	Minimum Center		Minimum Center		Minimum Center		Impact Resistant
	+ psf	- psf		Stiles	Hinges	Stiles	Hinges	Stiles	Hinges	
8'-2"	23.9	-27.0	Single	1	1	1	1	1	1	NO
9'-2"	21.3	-24.1	Single	1	1	1	1	1	1	NO
10'-2"	17.3	-19.6	Single	2	2	1	1	2	2	NO
12'-2"	12.1	-13.6	Single	2	2	2	2	2	2	NO

This product is designed and sold by PSF. The AHJ or Engineer of Record is responsible for determining the PSF required for any given site.

Jamb bracket quantities shown are for use with grade 2 or better southern pine jambs.

Supporting structural elements are to be designed by a registered professional engineer for specific wind loads.

Door Height	Total No. of Sections	Total # of Struts (When lite section is the top section, If not see the notice at the right)	Jamb Brkts/Side
6'-0"	3	3	2
6'-0"	4	3	2
6'-3"	4	3	2
6'-6"	4	3	3
6'-9"	4	3	3
7'-0"	4	3	3
7'-3"	4	3	3
7'-6"	4	3	3
7'-6"	5	4	3
7'-9"	4	3	3
7'-9"	5	4	3
8'-0"	4	3	3
8'-0"	5	4	3

Maximum section height is 24 in.

Maximum door height is 16 ft.

All doors, even those above the tested height, are available with jamb brackets or commercial full angle. The maximum spacing of the jamb brackets/track clips should be maintained.

NOTICE:

These drawings are a supplement to the installation instructions for a standard door and only covers those procedures that vary from standard door installation. If these specific procedures are not followed, the door may not perform as designed.

NOTICE:

The lite section of this door may be replaced with a section with another lite style or a solid section. In either case the strut and stile configuration should remain the same.

NOTICE:

Only one lite section per door is permitted. The lite section can be used anywhere except for the bottom section. If the lite section is not the top section then the struts must be located as shown in the STRUT CONFIGURATION on sheet 3.

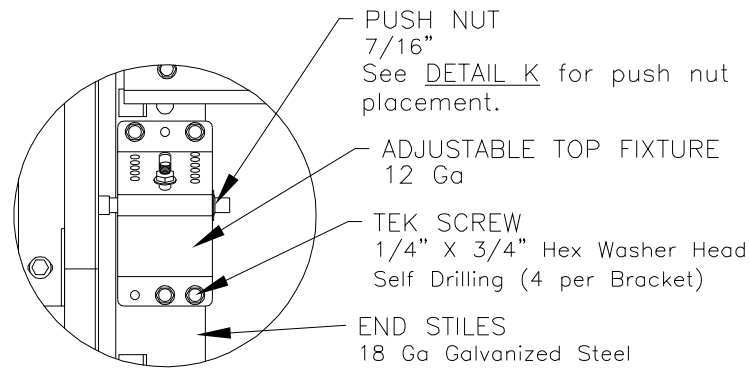
John E. Scates, P.E.
2560 King Arthur Blvd. Ste 124-54
Lewisville, Texas 75056
Florida P.E. # 51737

Printed copies of this document are not considered signed and sealed and the signature must be verified on any electronic copies.

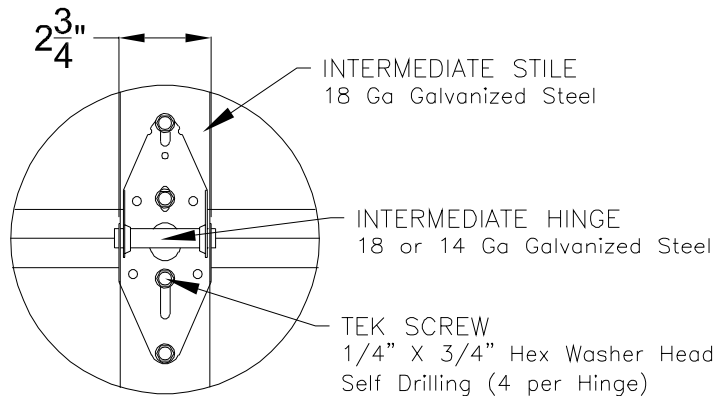
FL #16650.1

DESCRIPTION:
9' 2" PAN 2000 SERIES W/LITES WIND LOAD SECTIONAL DOOR
DESIGN PRESSURE +21.3/-24.1 PSF

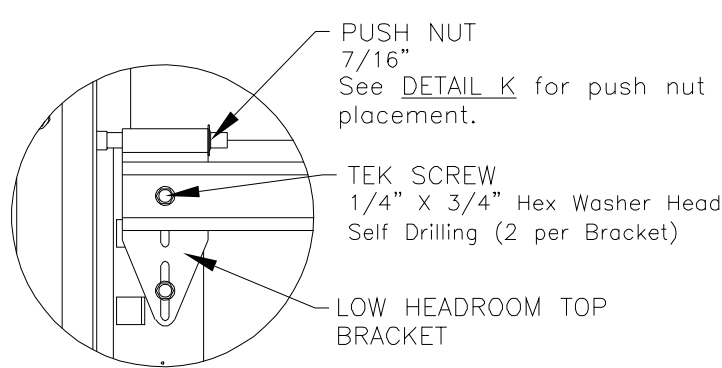
DRAWING NO.: WL-2000-0110-08-21-24L	REV. K	
DRAWN BY: MVS	DATE DRAWN: 8/14/14	REV. DATE: 8/30/23
MODEL(S): See Sheet 3		SHEET: 1 OF 4



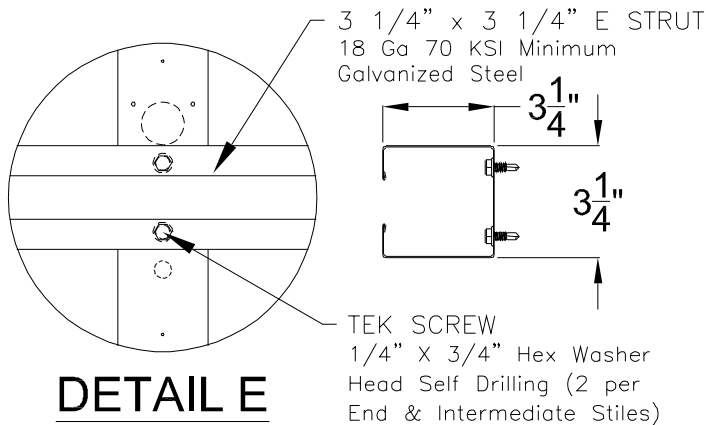
DETAIL A



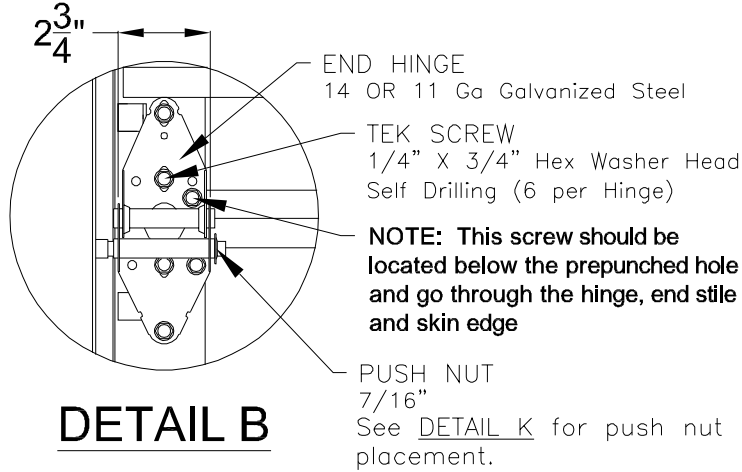
DETAIL D



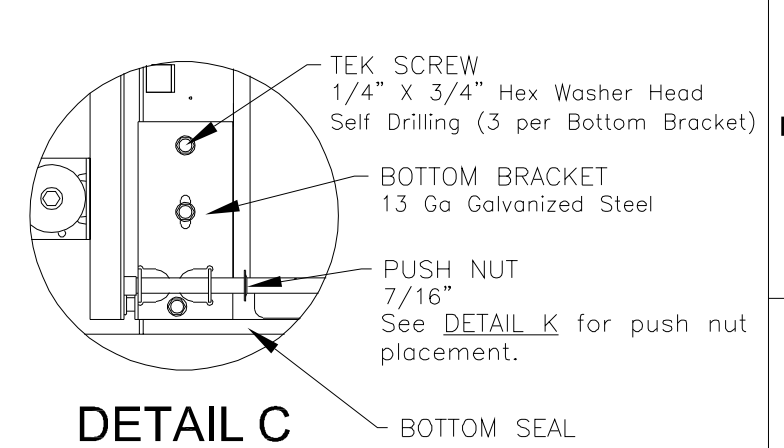
LOW HEADROOM
TOP BRACKET



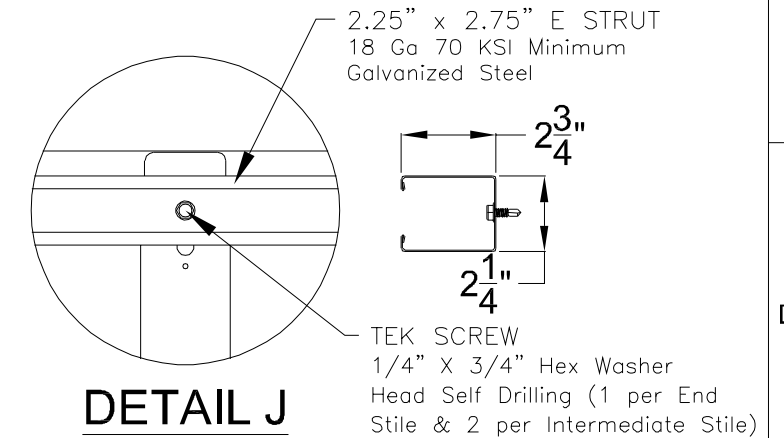
DETAIL E



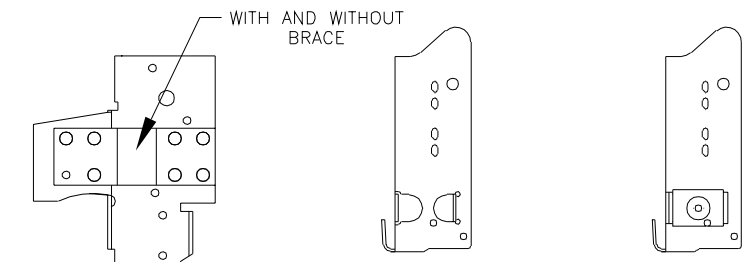
DETAIL B



DETAIL C



DETAIL J



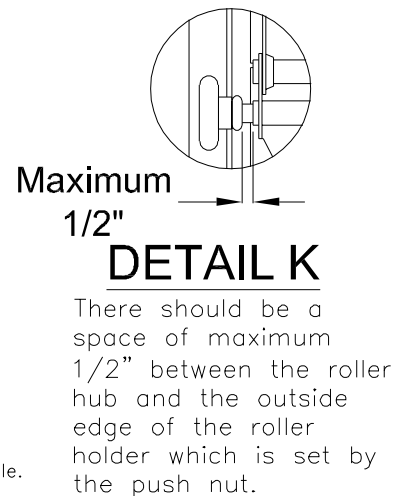
RESIDENTIAL & LIGHT COMMERCIAL For Low Headroom With 2" Track and Single End Stiles

COMMERCIAL For Standard, High & Vertical Lift With 2" Track and Single End Stiles

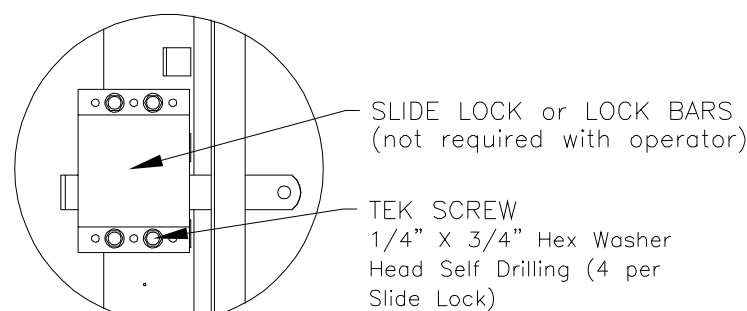
COMMERCIAL For Standard, High & Vertical Lift With 3" Track and Single End Stiles

ALTERNATE BOTTOM BRACKETS

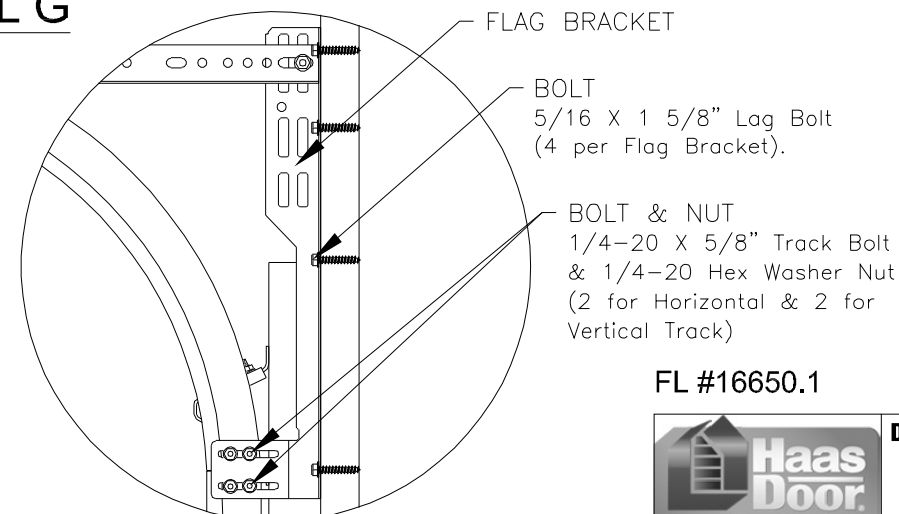
NOTE: The bottom bracket tested (shown in DETAIL C) is the lightest bracket available.



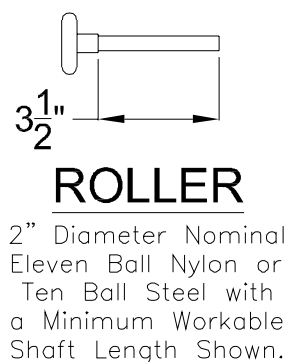
DETAIL K



DETAIL G



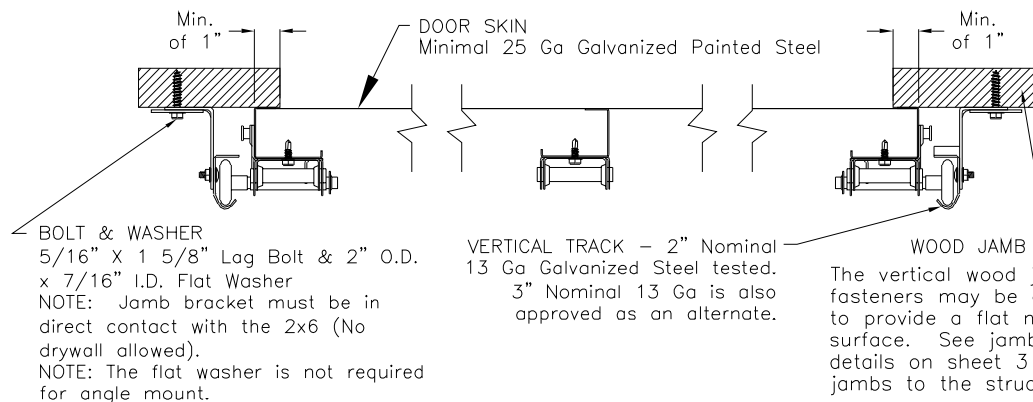
DETAIL H



ROLLER

2" Diameter Nominal Eleven Ball Nylon or Ten Ball Steel with a Minimum Workable Shaft Length Shown.

NOTE: Details on some views omitted for clarity. Double end stiles and end hardware may be provided on wider or heavier doors.



BOLT & WASHER 5/16" X 1 5/8" Lag Bolt & 2" O.D. x 7/16" I.D. Flat Washer
NOTE: Jamb bracket must be in direct contact with the 2x6 (No drywall allowed).
NOTE: The flat washer is not required for angle mount.

VERTICAL TRACK - 2" Nominal 13 Ga Galvanized Steel tested. 3" Nominal 13 Ga is also approved as an alternate.

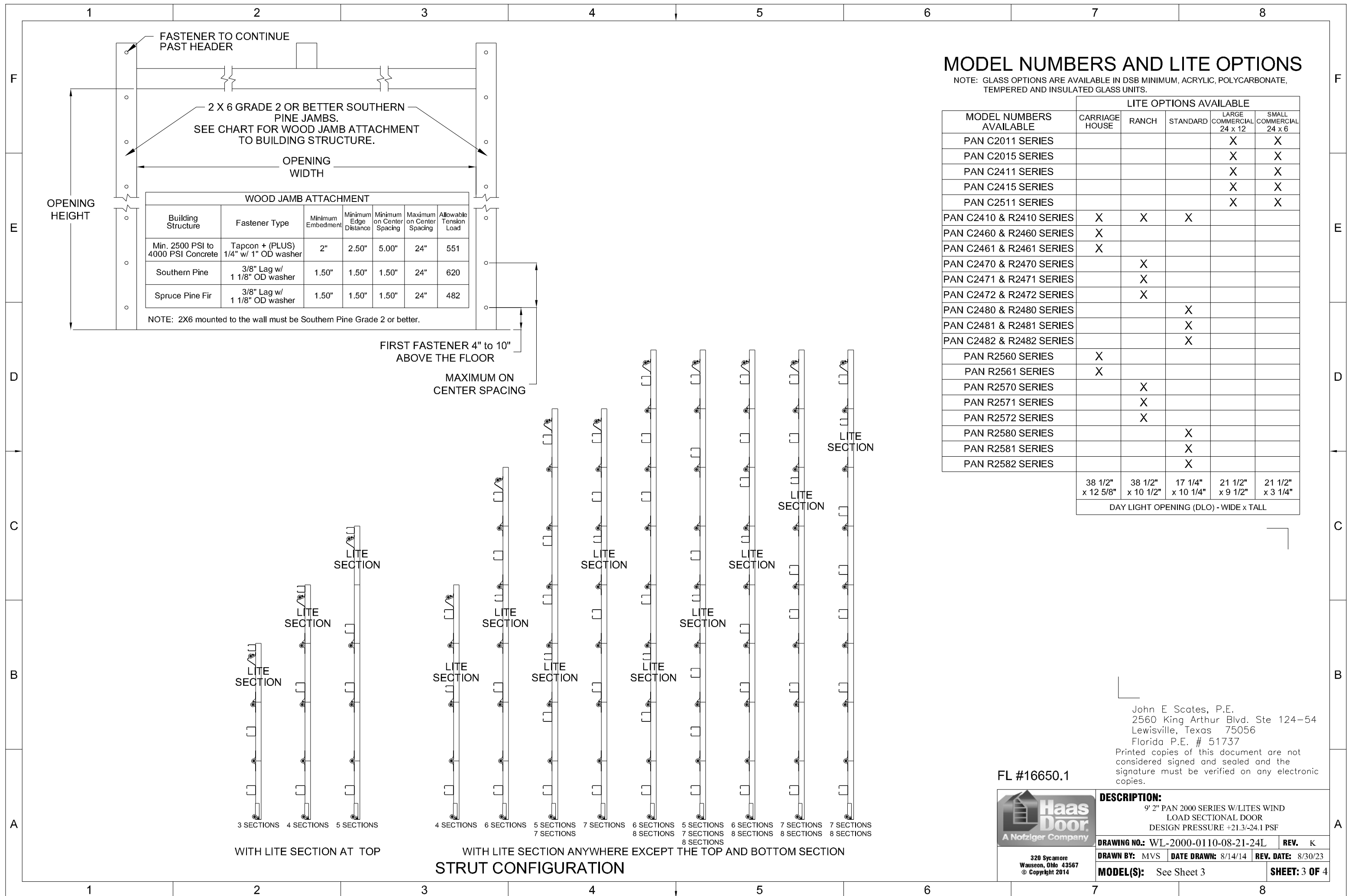
WOOD JAMB
The vertical wood jamb fasteners may be counter sunk to provide a flat mounting surface. See jamb attachment details on sheet 3 for attaching jambs to the structure.

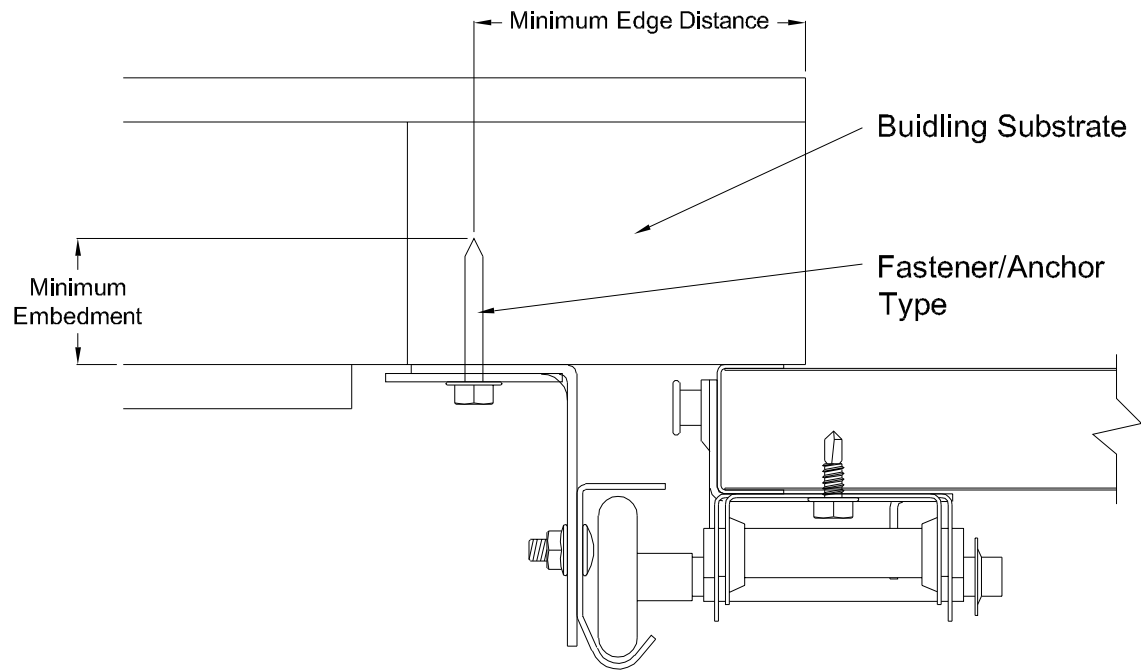
FL #16650.1



DESCRIPTION: 9' 2" PAN 2000 SERIES W/LITES WIND LOAD SECTIONAL DOOR DESIGN PRESSURE +21.3/-24.1 PSF			
DRAWING NO.: WL-2000-0110-08-21-24L	REV. K		
DRAWN BY: MVS	DATE DRAWN: 8/14/14	REV. DATE: 8/30/23	
MODEL(S): See Sheet 3			SHEET: 2 OF 4

John E. Scates, P.E.
2560 King Arthur Blvd. Ste 124-54
Lewisville, Texas 75056
Florida P.E. # 51737
Printed copies of this document are not considered signed and sealed and the signature must be verified on any electronic copies.





Direct Mounting Detail


Bracket Mount Shown, Reverse and Continuous Angle Mount, Reverse and Continuous Angle Clip Mount Also Approved As Alternate.

DIRECT MOUNTING					
Building Substrate	Fastener Type	Minimum Embedment	Minimum Fastener Length	Minimum Edge Distance	Minimum on Center Spacing
Southern Pine (SYP)	5/16" Dia. Lag Screw w/1-1/8" OD Flat Washer (shall conform to ANSI/ASME standard B18.2.1)	-	1-5/8"	1/2"	-
Spruce-Pine-Fur (SPF)	5/16" Dia. Lag Screw w/1-1/8" OD Flat Washer (shall conform to ANSI/ASME standard B18.2.1)	-	2-1/4"	1/2"	-
Min. 2500 PSI Concrete	3/8" Dia. Ankr-Tite CCAT w/1-1/8" OD Flat Washer (by Wej-It Fastening Systems)	2-3/8"	-	2-1/2"	6"
Min. 2500 PSI Concrete	1/4" Dia. Tapcon+ by ITW w/1-1/8" OD Flat Washer	2"	-	2-1/2"	5"
Min. 2500 PSI Concrete	1/4" Dia. Wedge-Bolt+ by Powers Fasteners w/1-1/8" OD Flat Washer	1-3/4"	-	2-1/2"	5"
Min. 2500 PSI Concrete	1/4" Dia. Red Head TruBolt wedge anchor by ITW w/1-1/8" OD Flat Washer	1-3/4"	-	2-1/2"	5"
1/8" GA Steel Minimum	5/16"-12 Tek Self-Drilling Screw w/1-1/8" OD Flat Washer	-	1"	-	-
3/16" GA Steel	Fillet Weld	See DASMA Technical Data Sheet TDS-161, section G			

NOTE: Doors are available with jamb brackets or commercial full angle. In either case the the maximum spacing noted on sheet 1 should be maintained for the brackets, clips and fasteners for direct mount.

John E. Scates, P.E.
2560 King Arthur Blvd. Ste 124-54
Lewisville, Texas 75056
Florida P.E. # 51737
Printed copies of this document are not considered signed and sealed and the signature must be verified on any electronic copies.

FL #16650.1

 A Nofziger Company 320 Sycamore Wauseon, Ohio 43567 © Copyright 2014	DESCRIPTION: 9' 2" PAN 2000 SERIES W/LITES WIND LOAD SECTIONAL DOOR DESIGN PRESSURE +21.3/-24.1 PSF				
	DRAWING NO.: WL-2000-0110-08-21-24L				REV. K
	DRAWN BY: MVS	DATE DRAWN: 8/14/14	REV. DATE: 8/30/23		
	MODEL(S): See Sheet 3				SHEET: 4 OF 4