

4			3			2			1		
MODELS			MODELS			SHEET 1 OF 4			REVISIONS		
SHORT			FLUSH						REV. NO.	ZONE:	DESCRIPTION
GD2SP, GR2SP			4302, HDGC						01	-	REVISED FOR RELEASE.
GD2LP, GR2LP			6202						02	-	REMOVED IMPACT RESISTANT GLAZING.
AR2SP			MFC68						03	-	ADDED IMPACT RESISTANT GLAZING.
AR2LP			SFR68, MFR68						04	-	ADDED GROOVED MODELS.
ED2SP									05	-	UPDATED TITLE BLOCK AND REMOVED WIND CHART
ED2LP											

OPTIONAL GLAZING MAY BE STANDARD (DSB OR BETTER) OR IMPACT RESISTANT GLAZING. MAXIMUM GLAZING SIZE (DLO) IS 38-1/2"x13". GLAZING MAY BE SHORT-PANEL (NOT SHOWN) OR LONG-PANEL (SHOWN). SEE SECTION B-B ON SHEET 2 FOR DETAILS. GLAZING MAY BE INSTALLED IN TOP SECTION (SHOWN) OR INTERMEDIATE SECTION (NOT SHOWN).

(1) 20 GA. BACKER PLATE AT EACH INTERMEDIATE HINGE LOCATION. BACKER PLATES ATTACHED WITH DOUBLE-SIDED ACRYLIC ADHESIVE TO BACK OF DOOR.

(2) GALV. STEEL TOP ROLLER BRACKETS. SEE SECTION A-A ON SHEET THREE FOR DETAILS.

16 GA. MIN. GALV. STEEL END STILES.

VIEW "B"  
VIEW "C"

TWO POINT LOCKING INTO TRACK.

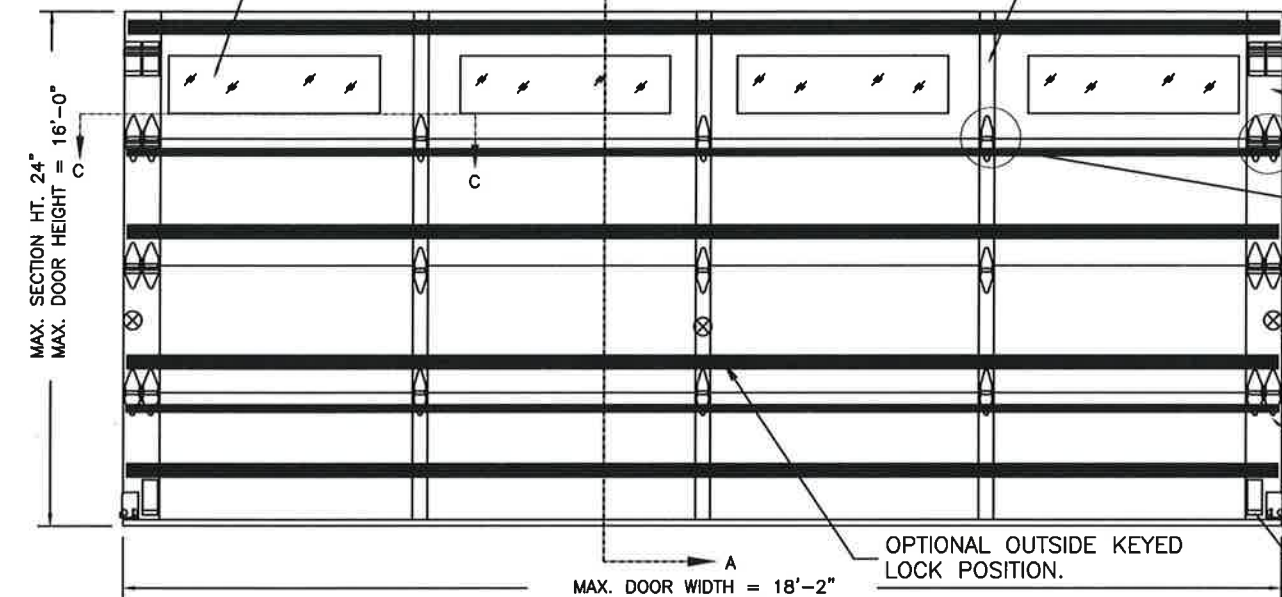
U-BAR.

T-STRUT.

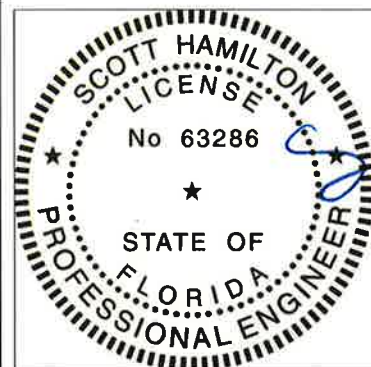
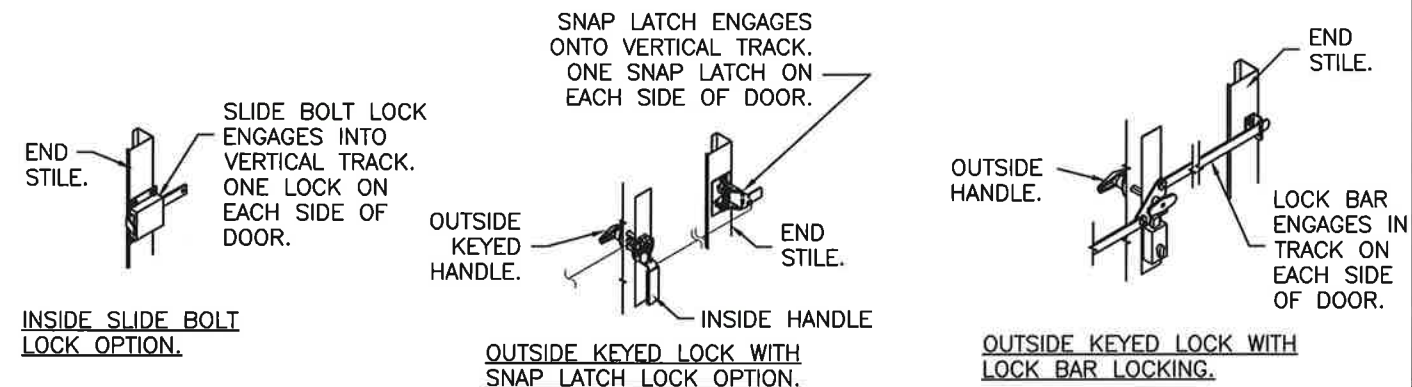
OPTIONAL OUTSIDE KEYED LOCK POSITION.

BRACKET USED FOR BOTTOM DOUBLE END STILE.

MAX. DOOR WIDTH = 18'-2"  
INSIDE ELEVATIONS



DOOR HEIGHT	# OF SECTIONS
UP TO 8'0"	4
8'3" TO 10'0"	5
10'3" TO 12'0"	6
12'3" TO 14'0"	7
14'3" TO 16'0"	8
MAX SECTION HEIGHT: 24'	



DESIGN ENGINEER:  
SCOTT HAMILTON, P.E.  
FLORIDA LICENSE No. 63286

DESIGN LOADS: +38.0 P.S.F. & -42.0 P.S.F.  
TEST LOADS: +57.0 P.S.F. & -63.0 P.S.F.

Unless Stated Otherwise  
TOLERANCES are  
.0 = ±.031  
.00 = ±.015  
.000 = ±.005  
.0000 = ±.001  
Degrees = ±1/2'

Unless Stated Otherwise  
DIMENSIONS ARE IN INCHES.

**Clopay**  
CORPORATION  
8585 Duke Boulevard  
Mason, OH 45040 USA  
Tel. No. 513-770-4800  
Fax No. 513-770-4853

DESCRIPTION: 2" GALLERY EPS DOORS 18'2"W (SEE TABLE)

DRAWN BY: SH	DATE: 1/10/13	SCALE: NTS	DWG. B
CHECKED BY: SH	DATE: 1/10/13	SHEET 1 OF 4	SIZE
DWG. NO.: 104810-A/B	VER: IBC		

MANUFACTURING PRODUCT CODE  
DSIE-1F471

PART NO.: N/A

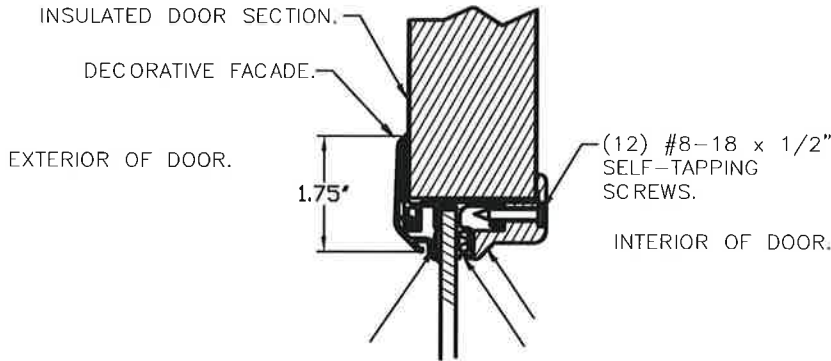
WINDLOAD RATING  
W6 DP38T

4			3			2		1					
MODELS	SHORT	LONG	MODELS	FLUSH	GROOVED	SHEET: 2 OF 4	REVISIONS						
CLOPAY GALLERY	GD2SP, GR2SP	GD2LP, GR2LP	CLOPAY CLASSIC	4302, HDGC	4305, HDGR		REV. NO.	ZONE:	DATE:	ECN NO.	APPVD:	DESCRIPTION	
HOLMES ARTISTRY	AR2SP	AR2LP	HOLMES CLASSIC	6202	6205		05	-	-	-	SH	SEE REVISION HISTORY ON SHEET ONE.	
IDEAL EXPRESSIONS	ED2SP	ED2LP	IDEAL CLASSIC	MFC68	SFR68, MFR68								

IMPACT-RESISTANT CONSTRUCTION:

SOLID DOORS (NO GLAZING) OR DOORS WITH OPTIONAL IMPACT-RESISTANT GLAZING ARE IMPACT-RESISTANT. OPTIONAL IMPACT RESISTANT ASSEMBLY CONSISTS OF ALUMINUM FRONT FRAME AND SABIC IP LEXAN 9034 (VERSIONS ALSO APPROVED: MR10, 9030, 90318, 90316, 90317, 90311, 90314, 90355) OR BAYER MAKROLON GP (VERSIONS ALSO APPROVED: SL, AR, 15), APPROVED CC1 PLASTICS IN ACCORDANCE WITH IBC/FBC 2606 AND APPROVED C1 PLASTICS IN ACCORDANCE WITH FBC 2612. THE ENTIRE DOOR ASSEMBLY INSTALLED IN COMPLIANCE WITH THIS SECTION MEETS THE WIND LOAD REQUIREMENTS OF THE FLORIDA BUILDING CODE AND INTERNATIONAL BUILDING CODE AND IS LARGE- AND SMALL-MISSILE IMPACT RESISTANT.

SECTION B-B (IMPACT-RESISTANT GLAZING OPTION)

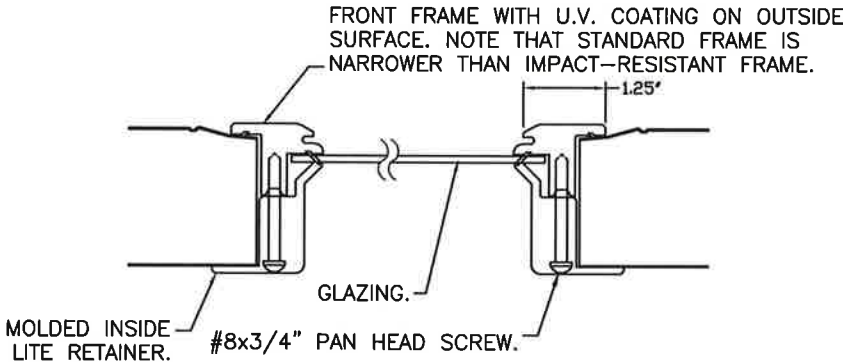


IMPACT-RESISTANT ASSEMBLY DETAILS  
DRAWING 104810-A

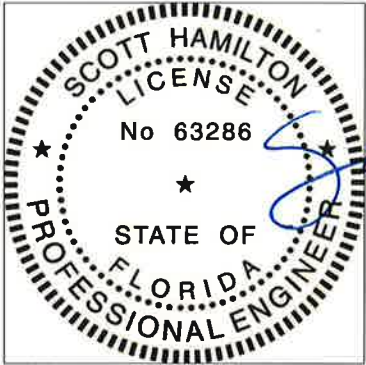
STANDARD ASSEMBLY CONSTRUCTION:

OPTIONAL DSB OR 1/8" ACRYLIC LITES AVAILABLE. OPTIONAL ACRYLIC GLAZING IS PLASKOLITE OPTIX OR LUCITE CP APPROVED CC2 PLASTIC IN ACCORDANCE WITH IBC/FBC 2606. THE ENTIRE DOOR ASSEMBLY INSTALLED IN COMPLIANCE WITH THIS SECTION MEETS THE WIND LOAD REQUIREMENTS OF THE FLORIDA BUILDING CODE OR INTERNATIONAL BUILDING CODE BUT DOES NOT MEET THE IMPACT RESISTANT REQUIREMENT FOR WINDBORNE DEBRIS REGIONS (REF. CHAPTER 16 FBC/IBC).

SECTION B-B (NON-IMPACT RESISTANT GLAZING OPTION)



STANDARD ASSEMBLY DETAILS  
DRAWING 104810-B



DESIGN ENGINEER:  
SCOTT HAMILTON, P.E.  
FLORIDA LICENSE No. 63286

DESIGN LOADS: +38.0 P.S.F. & -42.0 P.S.F.  
TEST LOADS: +57.0 P.S.F. & -63.0 P.S.F.

Unless Stated Otherwise  
TOLERANCES are  
.0 = ±.031  
.00 = ±.015  
.000 = ±.005  
.0000 = ±.001  
Degrees = ±1/2'

Unless Stated Otherwise  
DIMENSIONS ARE IN INCHES.

**Clopay**  
CORPORATION

8585 Duke Boulevard  
Mason, OH 45040 USA  
Tel. No. 513-770-4800  
Fax No. 513-770-4853

DESCRIPTION: 2" GALLERY EPS DOORS 18'2"W (SEE TABLE)

DRAWN BY: SH

DATE: 1/10/13

SCALE: NTS

DWG. B  
SIZE B

CHECKED BY: SH

DATE: 1/10/13

SHEET 2 OF 4

DWG. NO.: 104810-A/B

VER: IBC

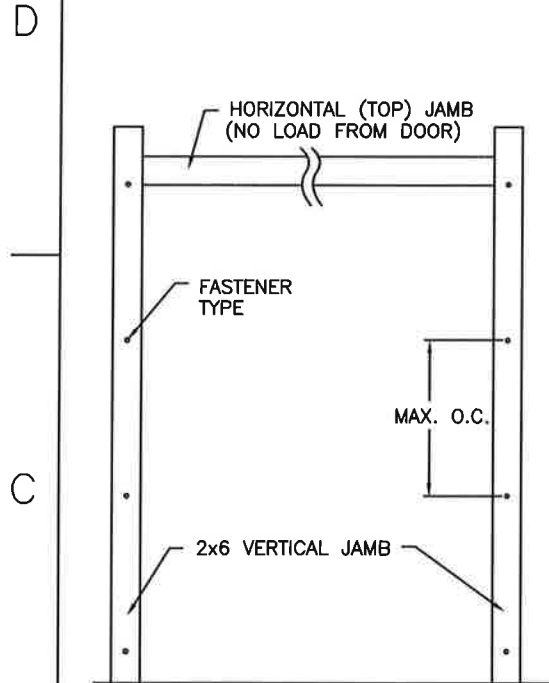
MANUFACTURING PRODUCT CODE  
DSIE-1F 471

PART NO.: N/A

WINDLOAD RATING  
W6 DP38T



4			3			2			1		
MODELS	SHORT	LONG	MODELS	FLUSH	GROOVED	SHEET: 3 OF 4			REVISIONS		
CLOPAY GALLERY	GD2SP, GR2SP	GD2LP, GR2LP	CLOPAY CLASSIC	4302, HDGC	4305, HDGR	REV. NO.	ZONE:	DATE:	ECN NO.	APPVD:	DESCRIPTION
HOLMES ARTISTRY	AR2SP	AR2LP	HOLMES CLASSIC	6202	6205	05	-	-	-	SH	SEE REVISION HISTORY ON SHEET ONE.
IDEAL EXPRESSIONS	ED2SP	ED2LP	IDEAL CLASSIC	MFC68	SFR68, MFR68						



JAMB TO SUPPORTING STRUCTURE ATTACHMENT

- NOTES:
- ALL THE LOAD FROM THE DOOR IS TRANSFERRED TO THE TRACK AND THEN FROM THE TRACK TO THE 2x6 VERTICAL SYP (GRADE #2 OR BETTER) JAMBS. NO LOAD FROM THE DOOR IS TRANSFERRED TO THE HORIZONTAL (TOP) JAMB.
  - EACH VERTICAL JAMB SEES A MAXIMUM DESIGN LOAD OF +304 LB & -336 LB. PER LINEAR FOOT OF JAMB.
  - ALL JAMB FASTENERS MAY BE (BUT ARE NOT REQUIRED TO BE) COUNTERSUNK TO PROVIDE A FLUSH MOUNTING SURFACE.
  - A 1/3 STRESS INCREASE FOR WIND LOAD WAS NOT USED IN THE CALCULATION OF ALLOWABLE LOADS FOR ANCHORS AND FASTENERS FOR STEEL, CONCRETE AND MASONRY.

PREPARATION OF JAMBS BY OTHERS

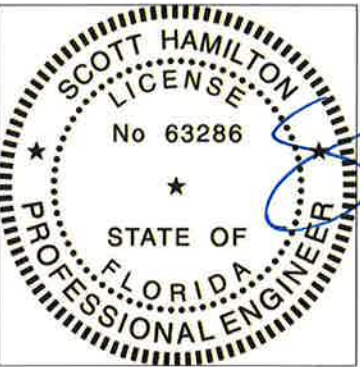
NOTE: THE DESIGN OF THE SUPPORTING STRUCTURAL ELEMENTS SHALL BE THE RESPONSIBILITY OF THE PROFESSIONAL OF RECORD FOR THE BUILDING OR STRUCTURE AND IN ACCORDANCE WITH CURRENT BUILDING CODES FOR THE LOADS LISTED ON THIS DRAWING.

2x6 JAMB TO SUPPORTING STRUCTURE ATTACHMENT

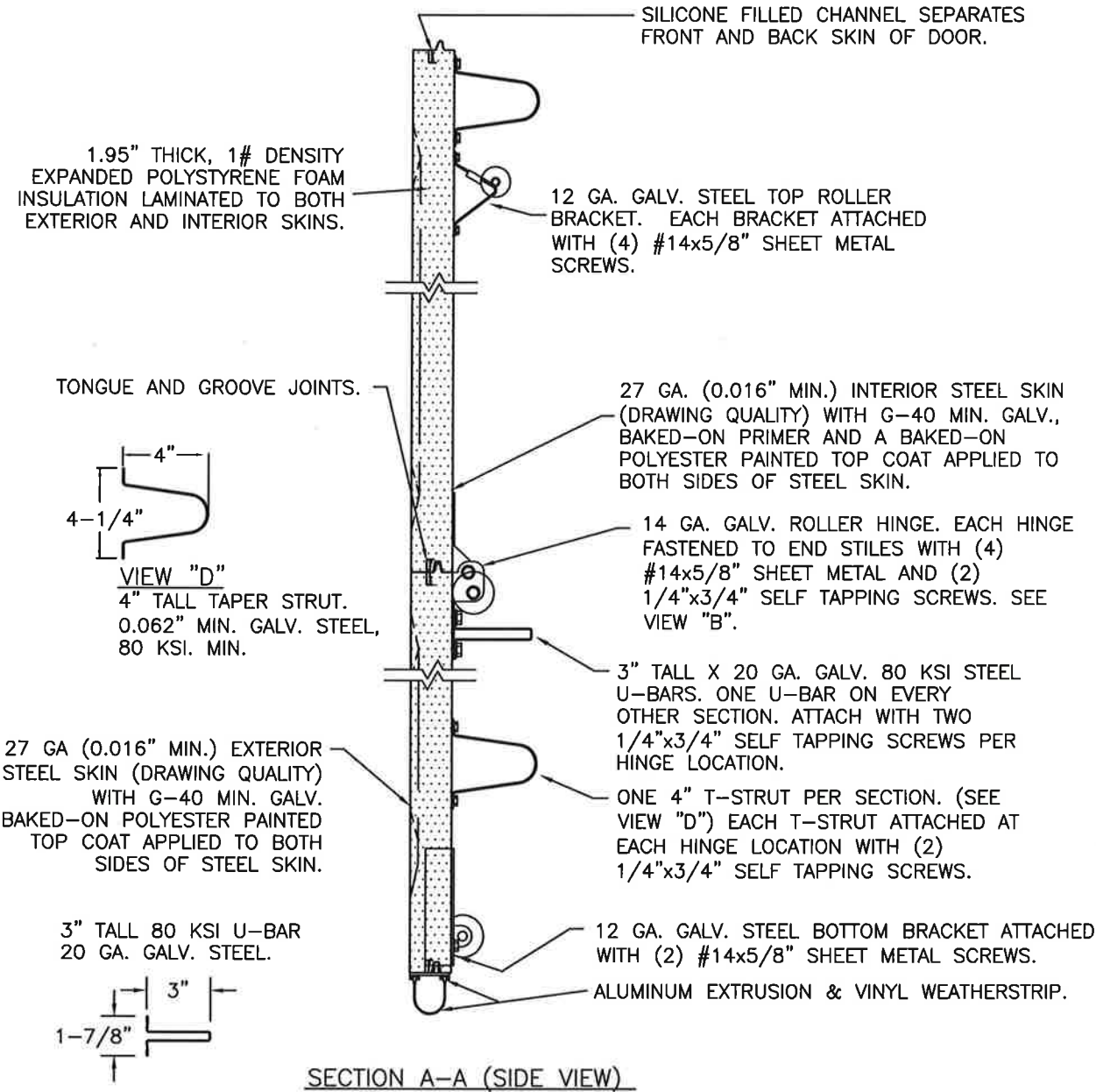
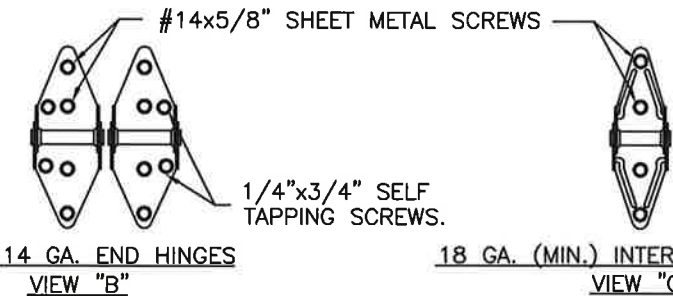
(NOT TO BE USED FOR ATTACHMENT OF TRACK ANGLE TO 2x6 VERTICAL JAMBS OR SUPPORTING STRUCTURE)

BUILDING TYPE	FASTENER TYPE	MAXIMUM ON-CENTER DISTANCE BETWEEN FASTENERS*	STEEL WASHERS REQUIRED?
BLOCK WALL	1/4" x 1-1/2" MIN. EMBED TAPCON CONCRETE ANCHOR	5"	1" O.D.
3000 PSI MIN. CONCRETE	1/4" x 1-1/2" MIN. EMBED TAPCON CONCRETE ANCHOR	13"	1" O.D.
2000 PSI MIN. CONCRETE	3/8" x 1-1/2" MIN. EMBED SIMPSON STRONG-TIE SLEEVE ANCHOR	11"	INCLUDED
WOOD FRAME (SYP 0.55 SG)	1/2" x 3" LAG SCREW (ASTM A307, GRADE A) 1-1/2" EMBED INTO STRUCTURE	19"	1" O.D.

\* FIRST (BOTTOM) ANCHOR STARTING AT NO MORE THAN HALF OF THE MAXIMUM ON-CENTER DISTANCE. HIGHEST ANCHOR INSTALLED AT LEAST AS HIGH AS THE DOOR OPENING.  
CLOPAY DOES NOT SUPPLY JAMB ATTACHMENT FASTENERS.  
MINIMUM DISTANCE BETWEEN CENTER OF ANCHOR AND EDGE OF CONCRETE BLOCK: 2-1/2", EXCLUDING STUCCO THICKNESS.



DESIGN ENGINEER:  
SCOTT HAMILTON, P.E.  
FLORIDA LICENSE No. 63286



DESIGN LOADS: +38.0 P.S.F. & -42.0 P.S.F.  
TEST LOADS: +57.0 P.S.F. & -63.0 P.S.F.

Unless Stated Otherwise  
TOLERANCES are  
.0 = ±.031  
.00 = ±.015  
.000 = ±.005  
.0000 = ±.001  
Degrees = ±1/2"  
Unless Stated Otherwise  
DIMENSIONS ARE IN INCHES.

**Clopay**  
CORPORATION

8585 Duke Boulevard  
Mason, OH 45040 USA  
Tel. No. 513-770-4800  
Fax No. 513-770-4853

DESCRIPTION: 2" GALLERY EPS DOORS 18'2"W (SEE TABLE)			
DRAWN BY: SH	DATE: 1/10/13	SCALE: NTS	DWG. B
CHECKED BY: SH	DATE: 1/10/13	SHEET 3 OF 4	SIZE
DWG. NO.: 104810-A/B	VER: IBC		

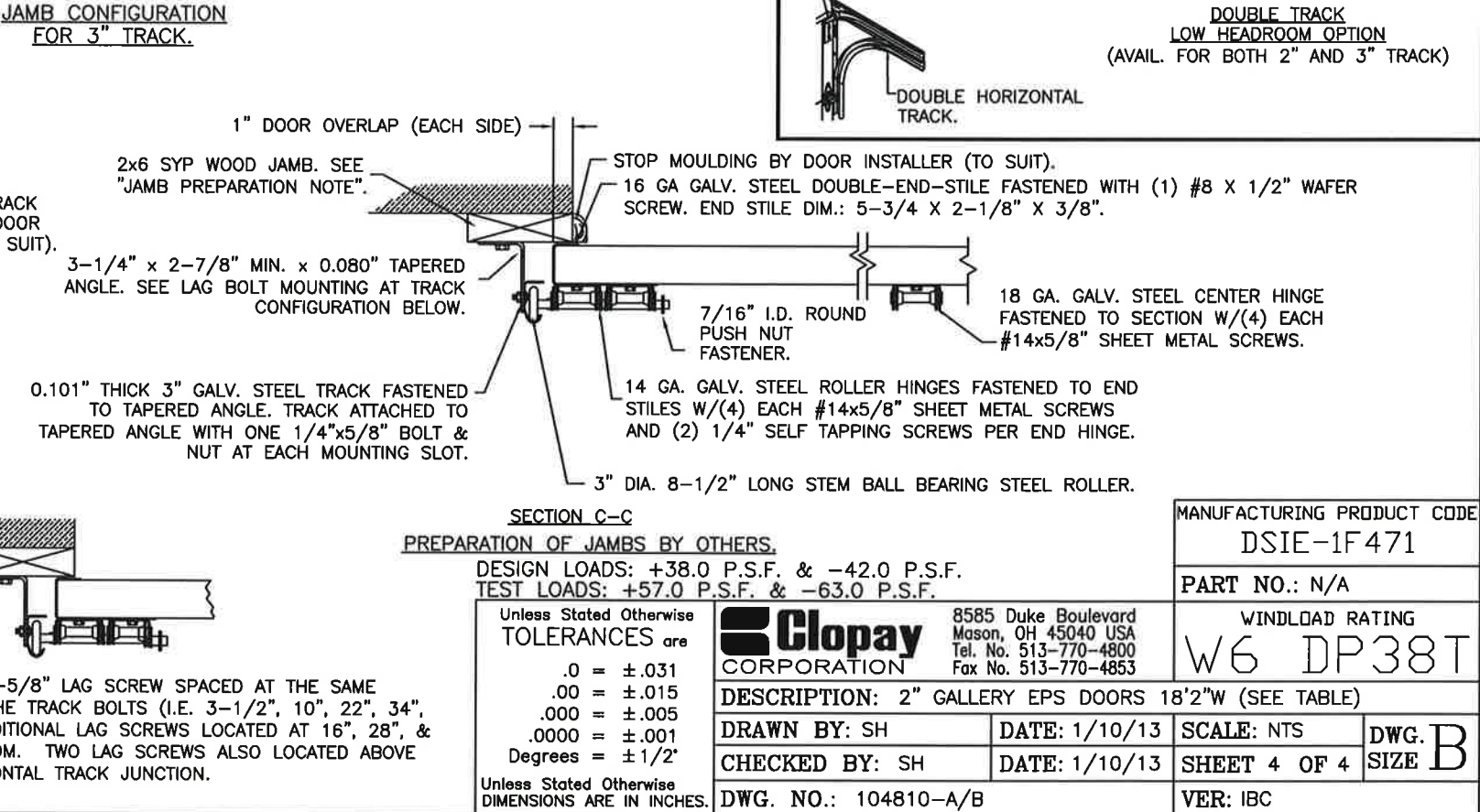
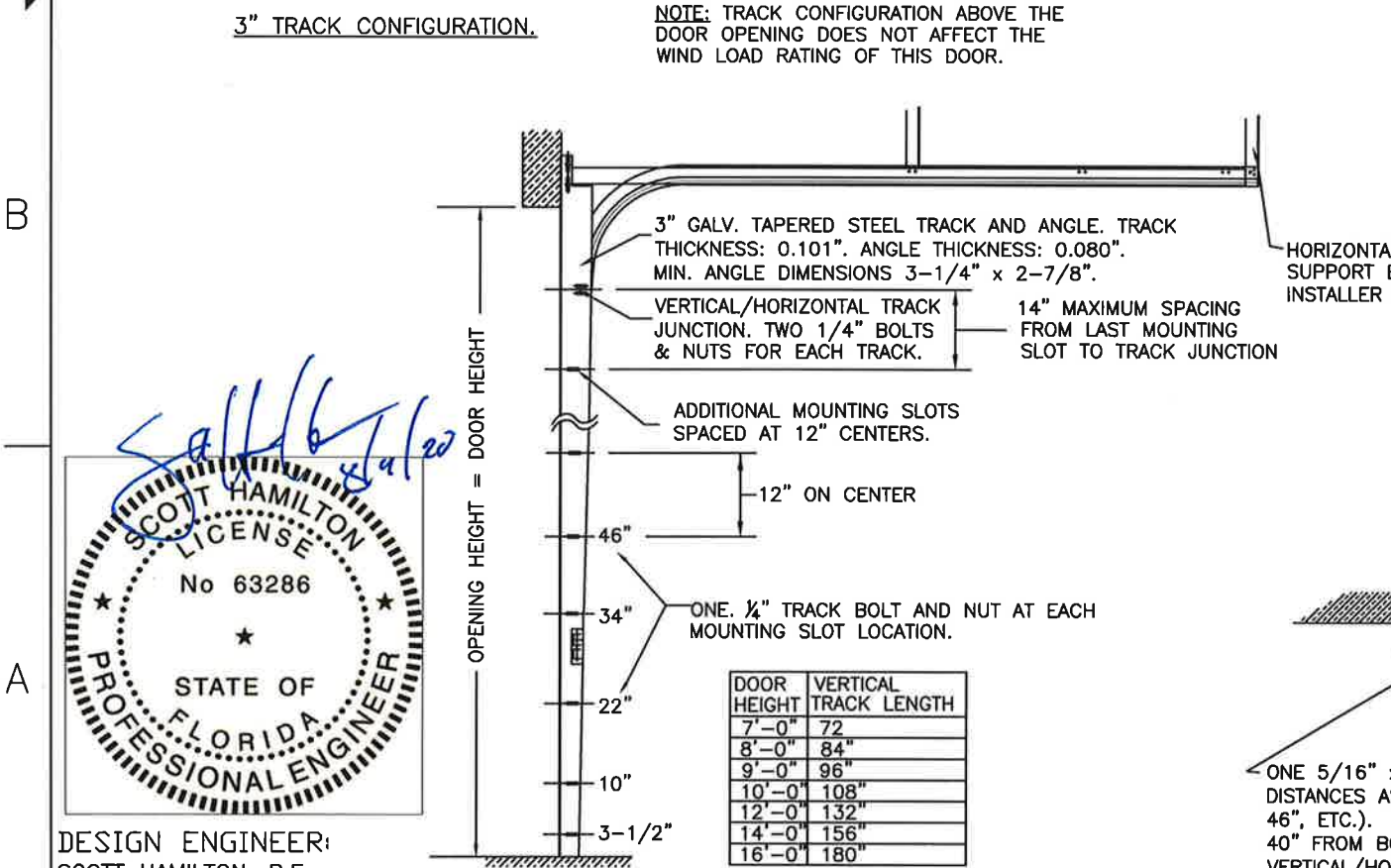
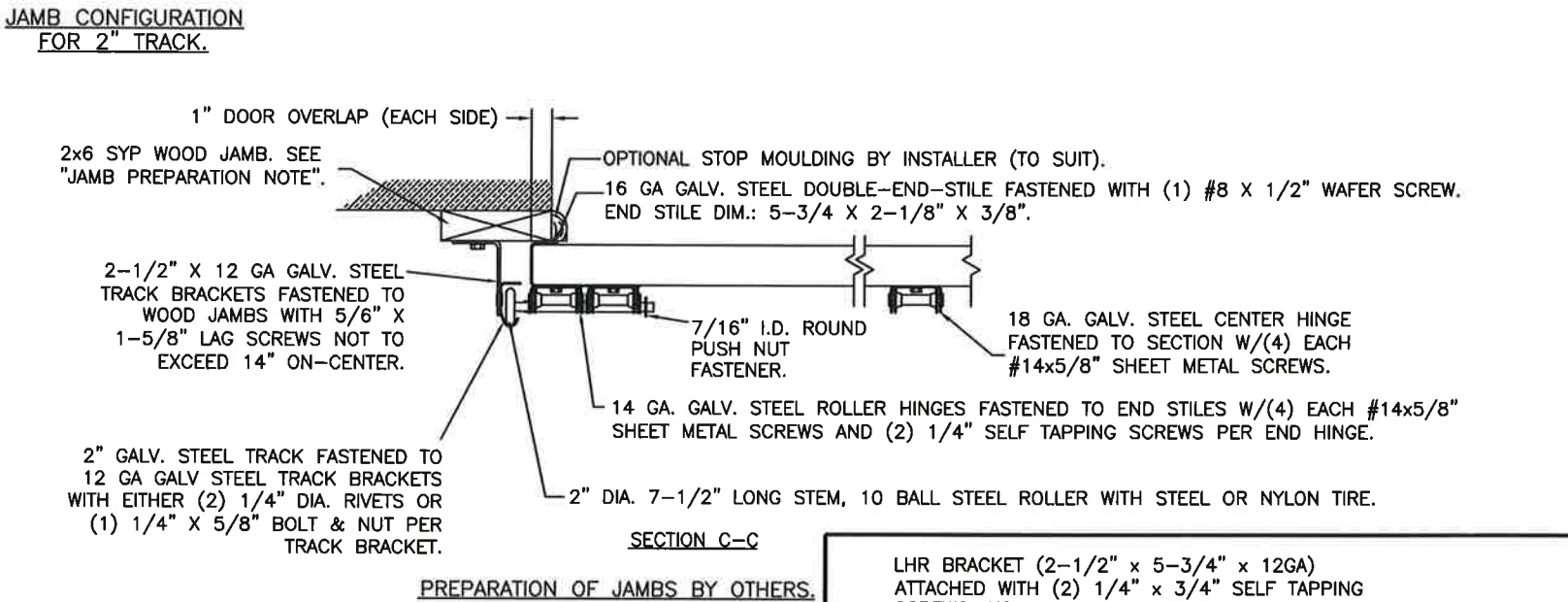
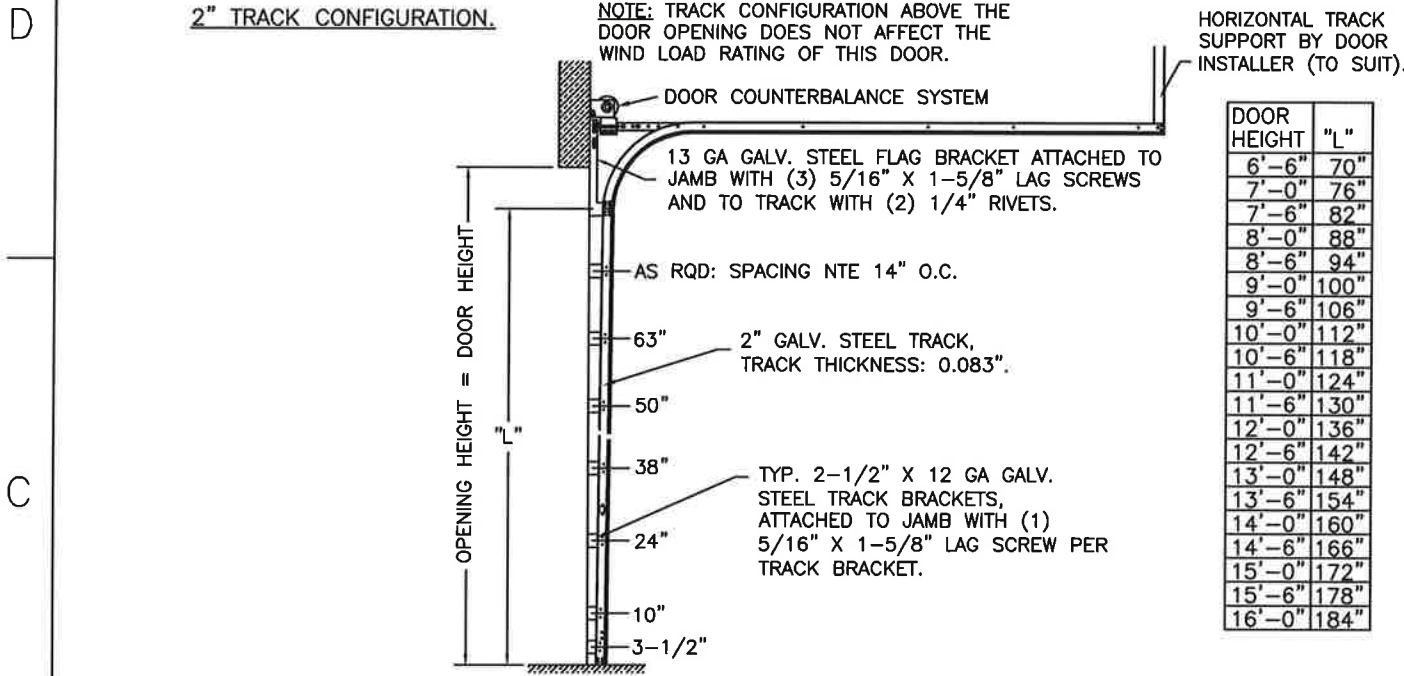
MANUFACTURING PRODUCT CODE  
DSIE-1F471

PART NO.: N/A

WINDLOAD RATING  
W6 DP38T



4			3			2						1
MODELS	SHORT	LONG	MODELS	FLUSH	GROOVED	SHEET: 4 OF 4	REVISIONS					
CLOPAY GALLERY	GD2SP, GR2SP	GD2LP, GR2LP	CLOPAY CLASSIC	4302, HDGC	4305, HDGR		REV. NO.	ZONE:	DATE:	ECN NO.	APPVD:	DESCRIPTION
HOLMES ARTISTRY	AR2SP	AR2LP	HOLMES CLASSIC	6202	6205		05	-	-	-	SH	SEE REVISION HISTORY ON SHEET ONE.
IDEAL EXPRESSIONS	ED2SP	ED2LP	IDEAL CLASSIC	MFC68	SFR68, MFR68							



DESIGN ENGINEER:  
SCOTT HAMILTON, P.E.  
FLORIDA LICENSE No. 63286