



1 COCHRANE AVE. PENNSBORO, WV 26415 PH.
800-426-2249

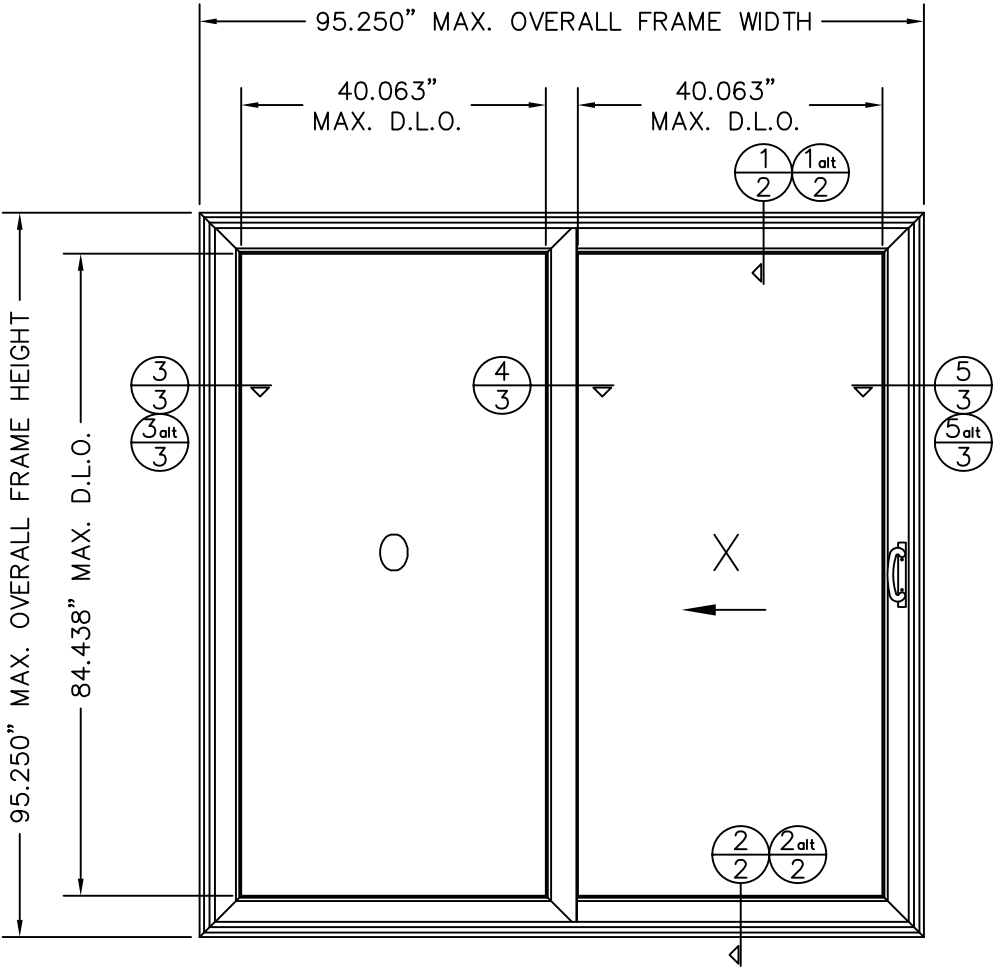
**STORMBREAKER PLUS 300VL
IMPACT RESISTANT VINYL
2-PANEL SLIDING PATIO DOOR**

ALL MODELS ARE VIEWED FROM THE EXTERIOR

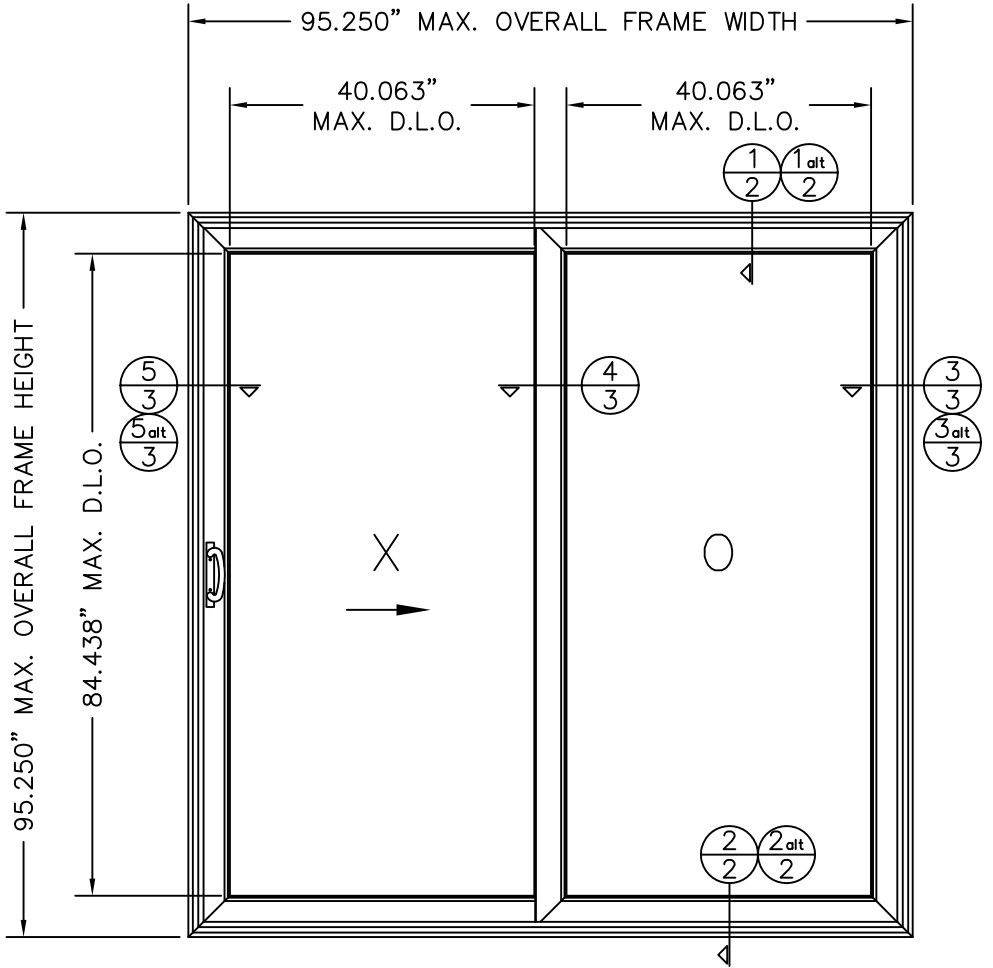
REV. #	REVISIONS:	REVISED BY:	DATE:
1	UPDATED TO INCLUDE 2014 FBC	L.A.T.	2/11/15
2	UPDATED FOR 2017 FBC	LMH	8/30/17
3	ADDED SETTING BLOCK REFERENCE TO GLAZING DETAIL, SHEET 2.	LMH	12/12/17
4	UPDATED FOR 7TH EDITION 2020 FBC	LMH	12/07/21
5	UPDATED FOR 8TH EDITION 2023 FBC	LMH	12/3/23

GENERAL NOTES:

1. THIS PRODUCT IS DESIGNED TO COMPLY WITH THE 8TH ED. (2023) FLORIDA BUILDING CODE, INCLUDING THE HIGH VELOCITY HURRICANE ZONE, AND WAS TESTED USING THE CURRENT METHODS AAMA/WDMA/CSA101/I.S.2/ A440 AND TAS 201, TAS 202, AND TAS 203. GLAZING AS INDICATED HEREIN COMPLIES WITH ASTM E 1300. THIS PRODUCT IS LARGE MISSILE IMPACT RATED AND DOES NOT REQUIRE THE USE OF IMPACT PROTECTIVE DEVICES OR SHUTTERS.
2. ANCHOR TYPE, SIZE, SPACING, AND EMBEDMENT SHALL BE AS SPECIFIED IN THESE DRAWINGS, USING ONLY MIAMI-DADE COUNTY APPROVED CORROSION-RESISTANT FASTENERS OR ITW TAPCON FASTENERS. ALL FASTENERS PENETRATING INTO PRESSURE TREATED WOOD SHALL BE CAPABLE OF PREVENTING CORROSION DUE TO REACTION WITH PRESSURE TREATMENT CHEMICALS. HIGH QUALITY SILICONE CAULK SHALL BE USED BY INSTALLER AROUND ENTIRE WINDOW PERIMETER, INSIDE AND OUT.
3. DISSIMILAR MATERIALS THAT COME INTO CONTACT SHALL BE COATED OR OTHERWISE PROTECTED PER FBC TO PREVENT GALVANIC REACTIONS. WOOD BUCKS, IF USED, SHALL BE PRESSURE TREATED, WITH EITHER A TREATMENT OR COATING COMPATIBLE WITH THE MATERIALS OF THIS DOOR.
4. ANCHOR EMBEDMENT TO SUBSTRATE SHALL BE BEYOND WALL DRESSING OR STUCCO. FOR CONCRETE/CMU OPENINGS, EMBEDMENT SHALL BE BEYOND WOOD BUCKS, IF USED, AND INTO SUBSTRATE. INSTALLATIONS TO SOLID CONCRETE OR GROUT-FILLED CMU MAY INCLUDE BUT DO NOT REQUIRE 1X WOOD BUCKS BETWEEN PRODUCT AND SUBSTRATE. INSTALLATIONS TO HOLLOW CMU REQUIRE THE USE OF 1X BUCKS BETWEEN PRODUCT AND SUBSTRATE.
5. WOOD OR MASONRY OPENINGS, BUCKS, AND BUCK FASTENERS, BY OTHERS, SHALL BE PROPERLY DESIGNED AND INSTALLED TO TRANSFER WIND LOADS TO THE STRUCTURE. SUBSTRATES SHALL MEET THE MINIMUM STRENGTH REQUIREMENTS AS SHOWN IN THESE DRAWINGS. CONCRETE OR MASONRY SUBSTRATES SHALL NOT BE CRACKED.
6. SHIMS ARE REQUIRED AT EACH INSTALLATION FASTENER WHERE GAPS OF GREATER THAN 1/16" EXIST BETWEEN OPENING AND FRAME. MAX. SHIM STACK IS 1/4". SHIMS SHALL BE LOAD-BEARING AND CAPABLE OF TRANSFERRING LOADS TO THE SUBSTRATE.
7. SEALING AND FLASHING STRATEGIES FOR OVERALL WATER PENETRATION RESISTANCE OF THE INSTALLED PRODUCT ARE THE RESPONSIBILITY OF OTHERS.
8. A WIND LOAD DURATION FACTOR CD = 1.6 WAS USED FOR THE ANALYSIS OF WOOD SCREWS ONLY.
9. A MINIMUM CENTER-TO-CENTER SPACING OF 3" SHALL BE MAINTAINED BETWEEN ALL ITW TAPCONS IN ANY DIRECTION.

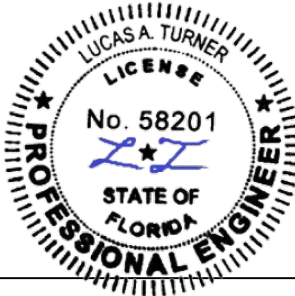


DESIGN PRESSURE RATING	IMPACT RATING
+50 PSF/-50 PSF	LARGE & SMALL MISSILE IMPACT



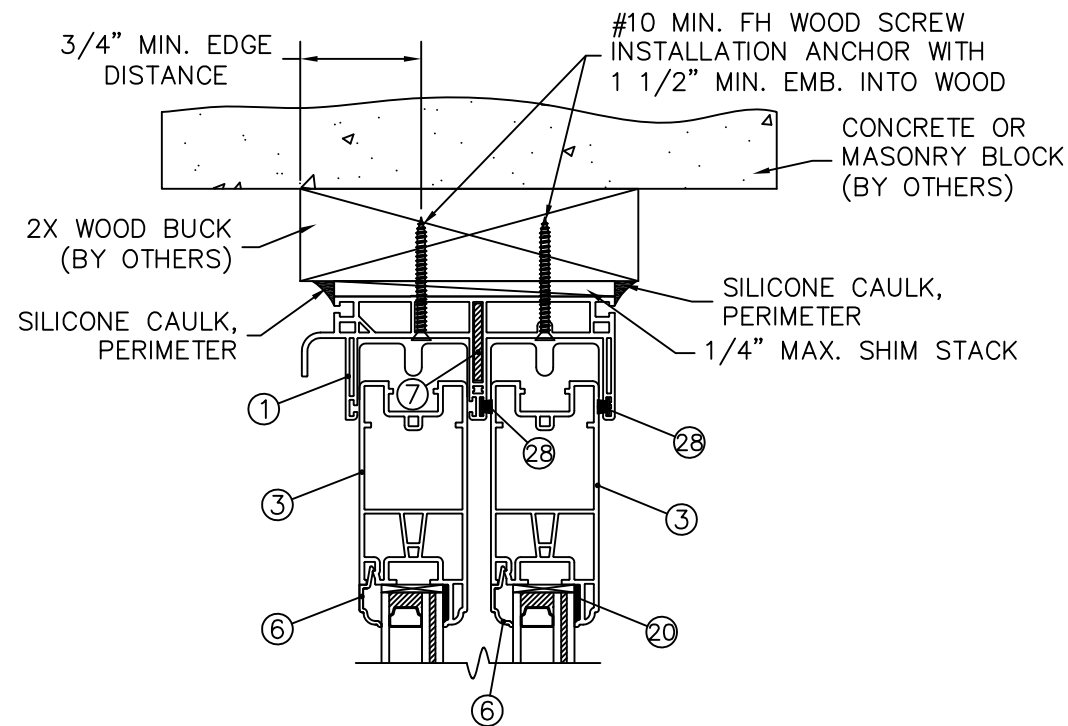
DESIGN PRESSURE RATING	IMPACT RATING
+50 PSF/-50 PSF	LARGE & SMALL MISSILE IMPACT

TABLE OF CONTENTS	
SHEET #	DESCRIPTION
1	GENERAL NOTES & TYPICAL ELEVATIONS
2	VERTICAL CROSS SECTIONS & GLAZING DETAILS
3	HORIZONTAL CROSS SECTIONS
4	ANCHORING LOCATIONS
5	BILL OF MATERIALS & COMPONENTS

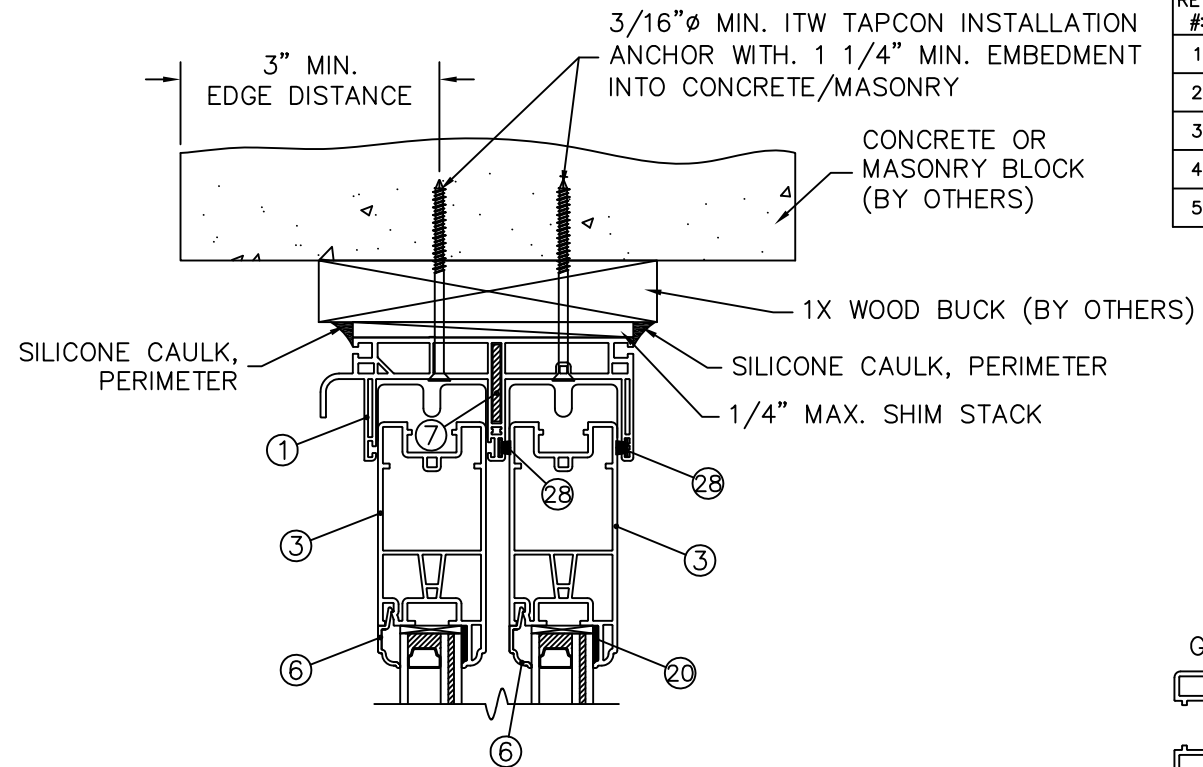


12/03/2023
LUCAS A. TURNER, P.E.
FL PE # 58201
TURNER ENGINEERING &
CONSULTING, INC.
(COA # 29779)
2428 OLD NATCHEZ TRACE
TRAIL,
CAMDEN, TN 38320
PH. 941-380-1574

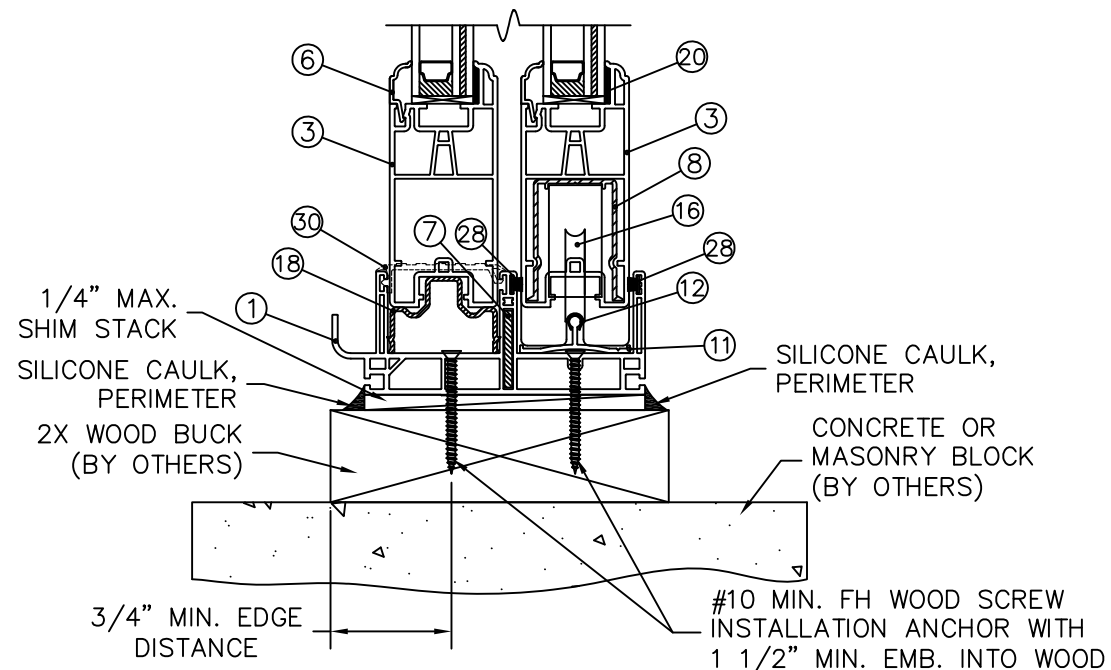
 1 Cochrane Avenue Pennsboro, WV 26415		SIZE: DRAWING NO.: B DA0010	REV.: 5
		DRAWN BY: T.D.D.	DATE: 01/14/13
		CHECKED BY:	DATE:
SCALE: FIT	SHEET: 1 of 5	APPR'V'D BY:	DATE:
SERIES: STORMBREAKER PLUS 300VL 2-PANEL SLIDING PATIO DOOR			
TITLE: GENERAL NOTES & TYPICAL ELEVATIONS			



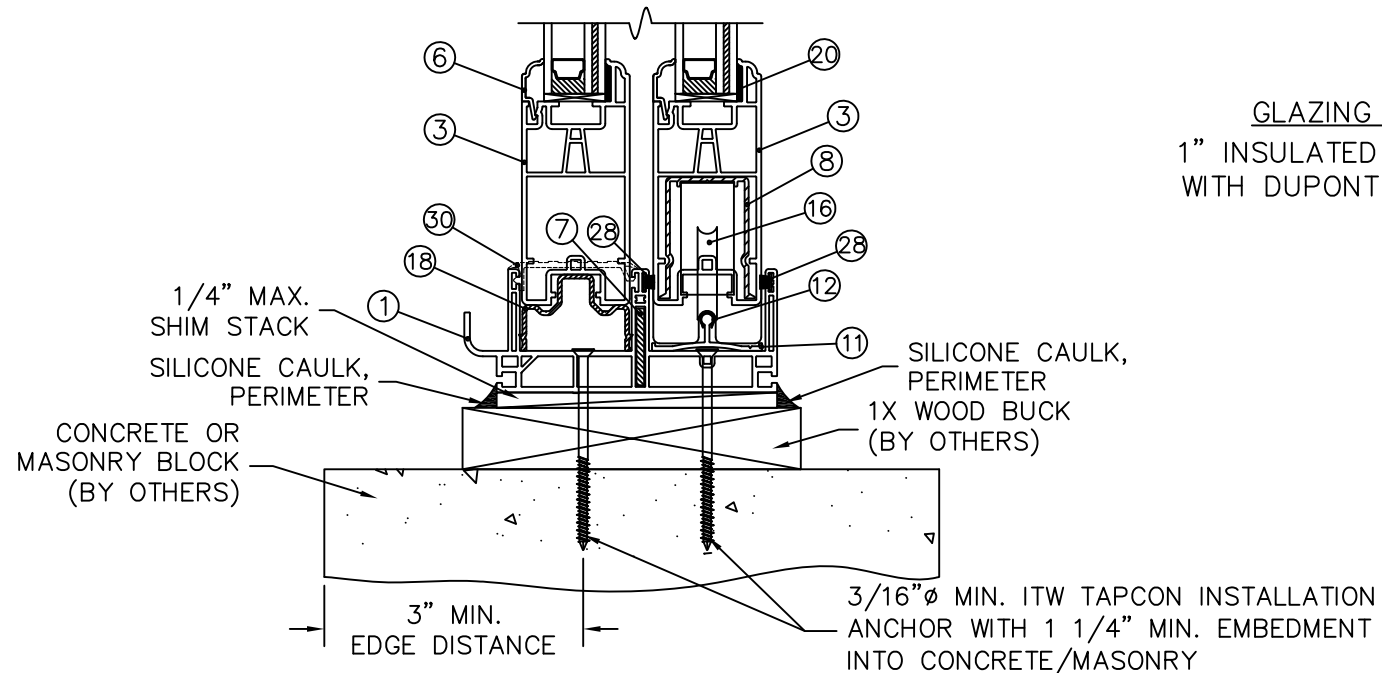
1 HEAD - VERTICAL CROSS SECTION
2 2X WOOD BUCK INSTALLATION



1 alt HEAD - VERTICAL CROSS SECTION
2 1X WOOD BUCK INSTALLATION

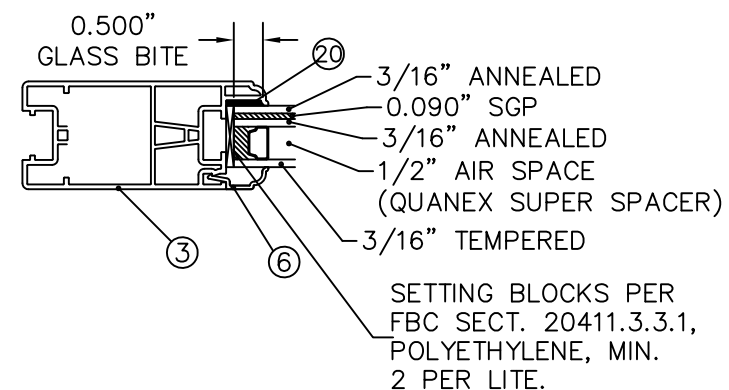


2 SILL - VERTICAL CROSS SECTION
2 2X WOOD BUCK INSTALLATION

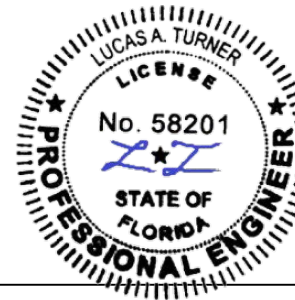


2 alt SILL - VERTICAL CROSS SECTION
2 1X WOOD BUCK INSTALLATION

REV. #	REVISIONS:	REVISED BY:	DATE:
1	UPDATED TO INCLUDE 2014 FBC	L.A.T.	2/11/15
2	UPDATED FOR 2017 FBC	LMH	8/30/17
3	ADDED SETTING BLOCK REFERENCE TO GLAZING DETAIL, SHEET 2.	LMH	12/12/17
4	UPDATED FOR 7TH EDITION 2020 FBC	LMH	12/07/21
5	UPDATED FOR 8TH EDITION 2023 FBC	LMH	12/3/23

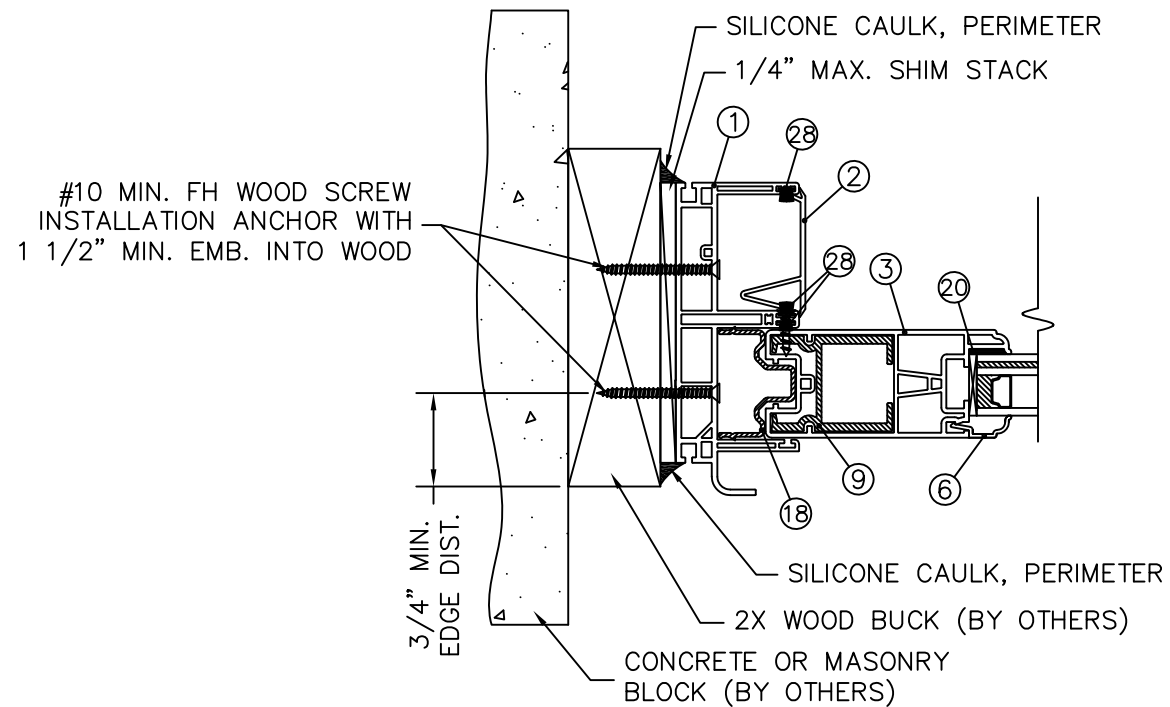


GLAZING DETAILS
1" INSULATED GLASS UNIT
WITH DUPONT INTERLAYER

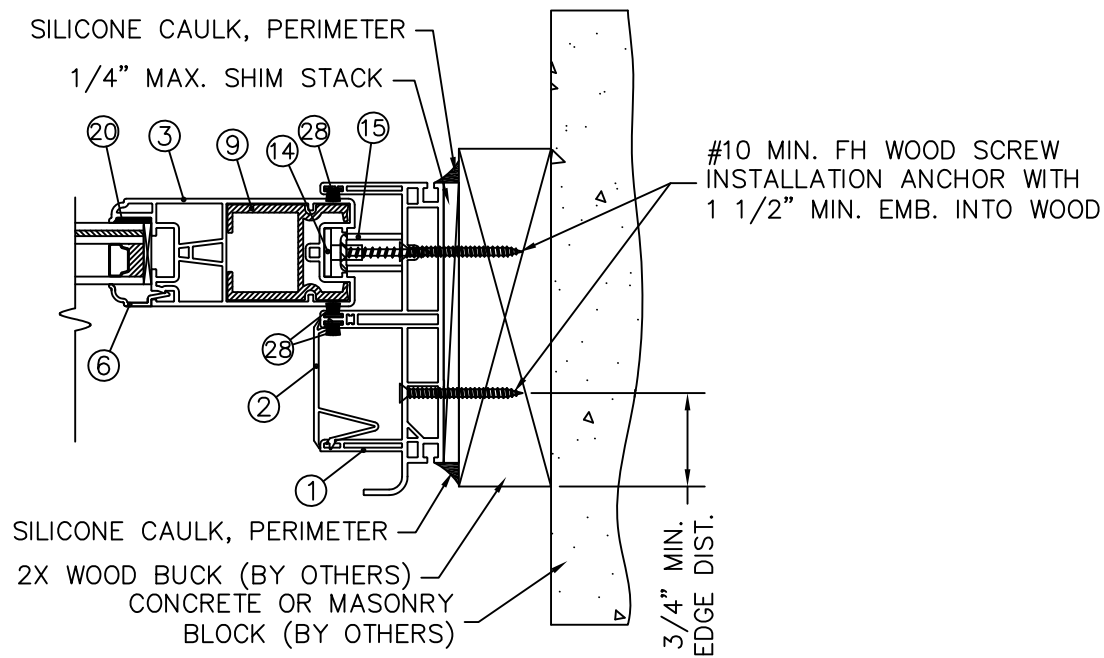


12/03/2023
LUCAS A. TURNER, P.E.
FL PE # 58201
TURNER ENGINEERING &
CONSULTING, INC.
(COA # 29779)
2428 OLD NATCHEZ TRACE
TRAIL,
CAMDEN, TN 38320
PH. 941-380-1574

 1 Cochrane Avenue Pennsboro, WV 26415	SIZE: DRAWING NO.: B DA0010	REV.: 5
DRAWN BY: T.D.D.	DATE: 01/14/13	
CHECKED BY:	DATE:	
SCALE: FIT	SHEET: 2 of 5	APPR'VD BY: DATE:
SERIES: STORMBREAKER PLUS 300VL 2-PANEL SLIDING PATIO DOOR		
TITLE: VERTICAL CROSS SECTIONS & GLAZING DETAILS		

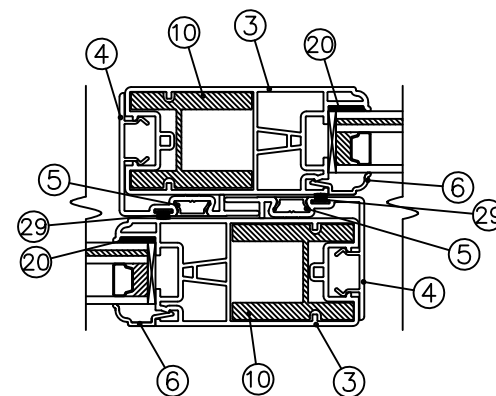


③ FIXED PANEL (JAMB) – HORIZONTAL SECTION
2X WOOD BUCK INSTALLATION

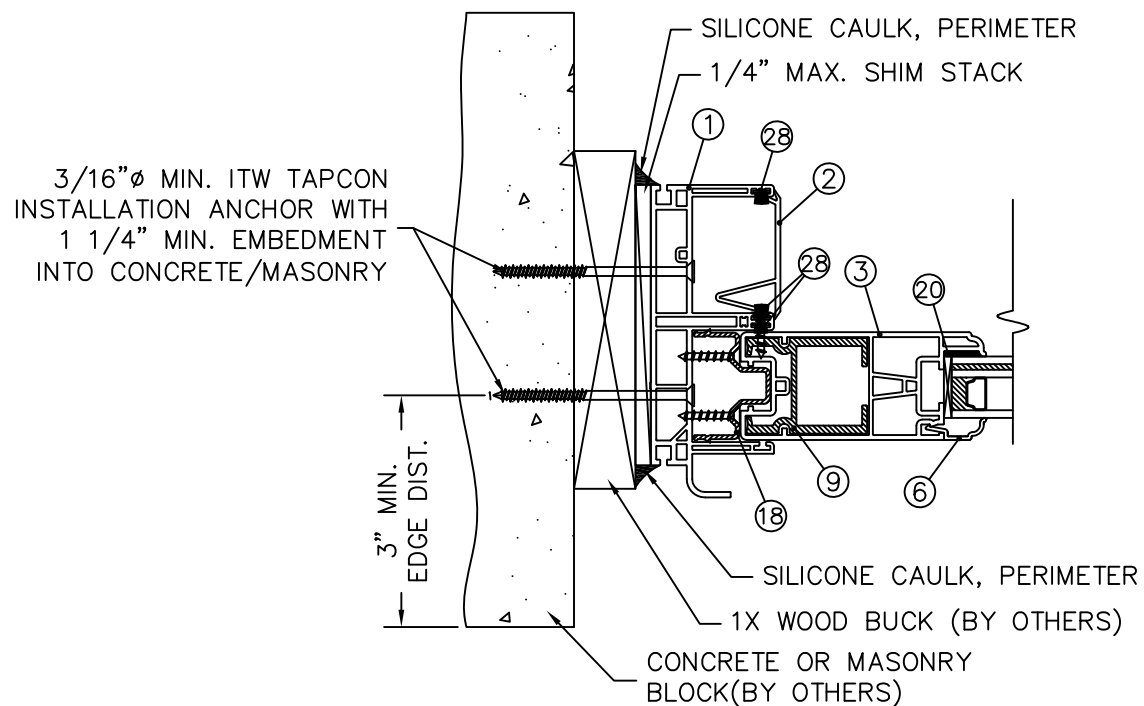


⑤ OPER. PANEL (JAMB) – HORIZONTAL SECTION
2X WOOD BUCK INSTALLATION

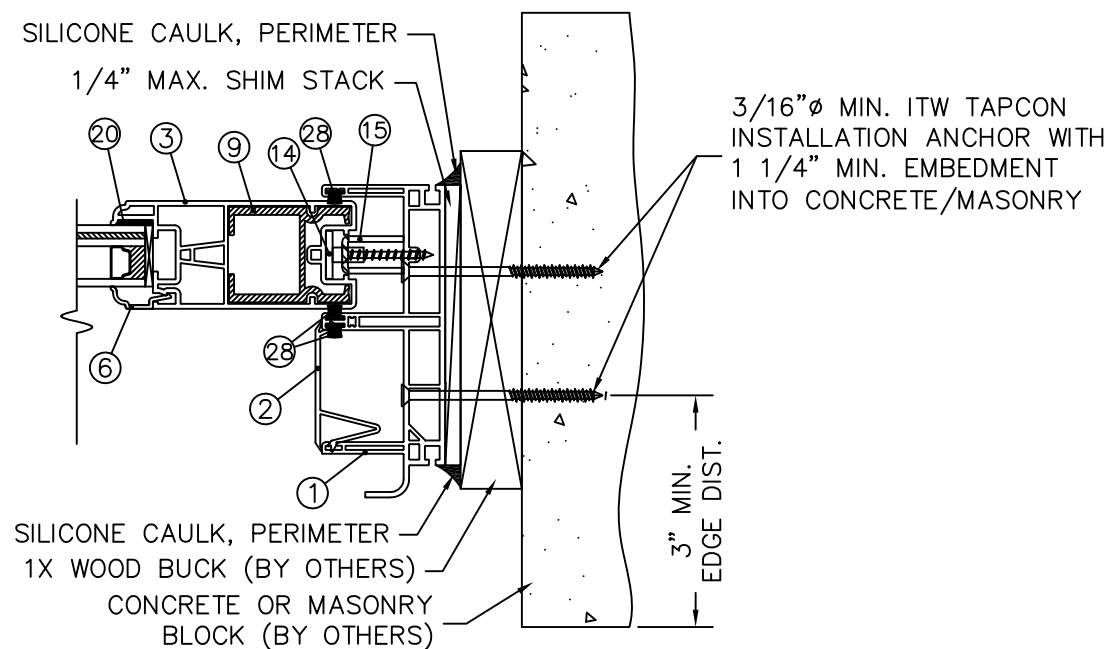
REV. #	REVISIONS:	REVISED BY:	DATE:
1	UPDATED TO INCLUDE 2014 FBC	L.A.T.	2/11/15
2	UPDATED FOR 2017 FBC	LMH	8/30/17
3	ADDED SETTING BLOCK REFERENCE TO GLAZING DETAIL, SHEET 2.	LMH	12/12/17
4	UPDATED FOR 7TH EDITION 2020 FBC	LMH	12/07/21
5	UPDATED FOR 8TH EDITION 2023 FBC	LMH	12/3/23



④ MEETING RAIL – HORIZONTAL SECTION
1X OR 2X WOOD BUCK INSTALLATION

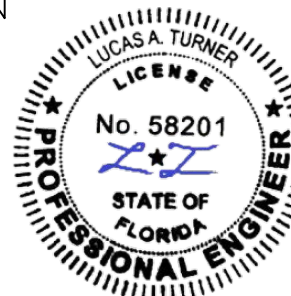


③alt FIXED PANEL (JAMB) – HORIZONTAL SECTION
1X WOOD BUCK INSTALLATION



⑤alt OPER. PANEL (JAMB) – HORIZONTAL SECTION
1X WOOD BUCK INSTALLATION

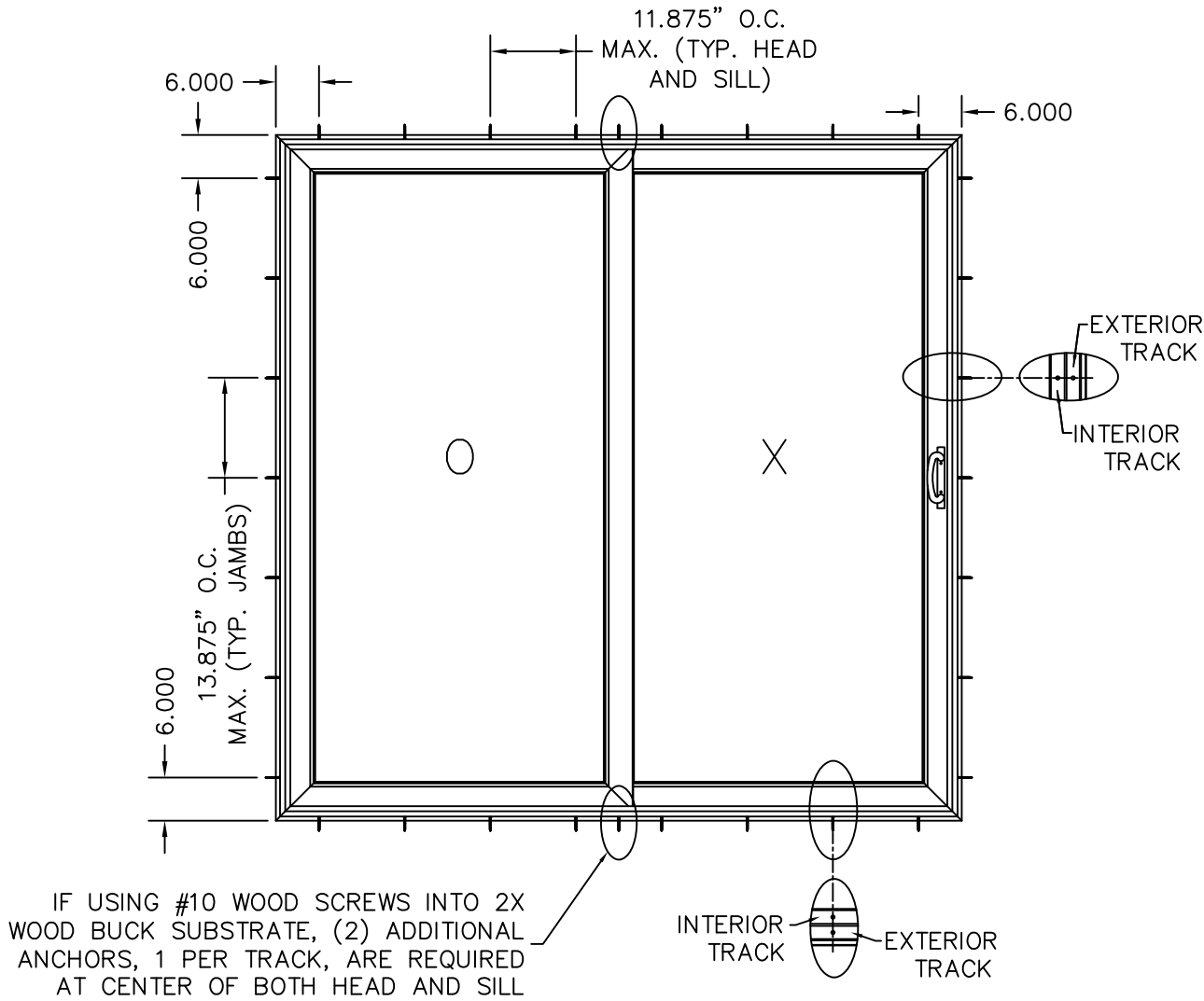
NOTE: HANDLE SET OMITTED FROM HORIZONTAL SECTIONS FOR CLARITY



12/03/2023
LUCAS A. TURNER, P.E.
FL PE # 58201
TURNER ENGINEERING & CONSULTING, INC.
(COA # 29779)
2428 OLD NACHEZ TRACE TRAIL,
CAMDEN, TN 38320
PH. 941-380-1574

		SIZE: DRAWING NO.: B DA0010	REV.: 5
1 Cochrane Avenue Pennsboro, WV 26415		DRAWN BY: T.D.D.	DATE: 01/14/13
SCALE: FIT		CHECKED BY:	DATE:
SHEET: 3 of 5		APPR'VD BY:	DATE:
SERIES: STORMBREAKER PLUS 300VL 2-PANEL SLIDING PATIO DOOR			
TITLE: HORIZONTAL CROSS SECTIONS			

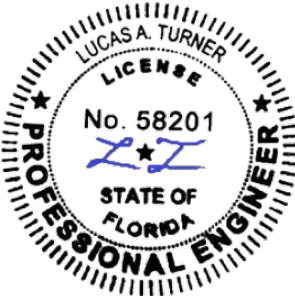
REV. #	REVISIONS:	REVISED BY:	DATE:
1	UPDATED TO INCLUDE 2014 FBC	L.A.T.	2/11/15
2	UPDATED FOR 2017 FBC	LMH	8/30/17
3	ADDED SETTING BLOCK REFERENCE TO GLAZING DETAIL, SHEET 2.	LMH	12/12/17
4	UPDATED FOR 7TH EDITION 2020 FBC	LMH	12/07/21
5	UPDATED FOR 8TH EDITION 2023 FBC	LMH	12/3/23




IF USING #10 WOOD SCREWS INTO 2X WOOD BUCK SUBSTRATE, (2) ADDITIONAL ANCHORS, 1 PER TRACK, ARE REQUIRED AT CENTER OF BOTH HEAD AND SILL

ANCHOR LAYOUT
RIGHT OPENING DOOR

- NOTES:
1. RIGHT OPENING DOOR SHOWN. LEFT OPENING DOOR INSTALLATION SIMILAR.
 2. WHEN ANCHORING THE DOOR TO A 2X WOOD BUCK, USE ITEM #21, #10 MIN. WOOD SCREWS OF SUFFICIENT LENGTH TO ACHIEVE 1 1/2" EMBEDMENT INTO THE WOOD.
 3. WHEN ANCHORING THE DOOR THRU A 1X WOOD BUCK INTO 2000 PSI (MIN.) CONCRETE (HEAD SILL, OR JAMB) OR 95 PCF (MIN.) MASONRY BLOCK (JAMBS ONLY), USE ITEM #22, 3/16"Ø MIN. ITW TAPCONS OF SUFFICIENT LENGTH TO ACHIEVE 1 1/4" EMBEDMENT INTO THE CONCRETE OR MASONRY BLOCK.

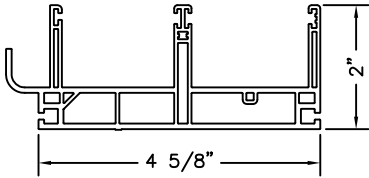


12/03/2023
LUCAS A. TURNER, P.E.
FL PE # 58201
TURNER ENGINEERING &
CONSULTING, INC.
(COA # 29779)
2428 OLD NATCHEZ TRACE
TRAIL,
CAMDEN, TN 38320
PH. 941-380-1574

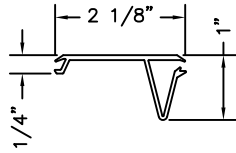
 SIMONTON® W I N D O W S 1 Cochrane Avenue Pennsboro, WV 26415	SIZE: B	DRAWING NO.: DA0010	REV.: 5
	DRAWN BY: T.D.D.	DATE: 01/14/13	
	CHECKED BY:	DATE:	
SCALE: FIT	SHEET: 4 of 5	APPRV'D BY:	DATE:
SERIES: STORMBREAKER PLUS 300VL 2-PANEL SLIDING PATIO DOOR			
TITLE: ANCHORING LOCATIONS			

BILL OF MATERIALS		
ITEM #	DESCRIPTION	MANUFACTURER
1	VINYL DOOR FRAME	DECEUNINCK*
2	VINYL TRACK COVER & SASH STOP	DECEUNINCK*
3	VINYL SASH	DECEUNINCK*
4	VINYL SASH INTERLOCK	DECEUNINCK*
5	VINYL SCREW COVER	DECEUNINCK*
6	VINYL GLAZING BEAD	DECEUNINCK*
7	6063-T5 ALUMINUM FRAME REINFORCEMENT	EXCEL
8	6063-T6 ALUMINUM ROLLER RAIL REINFORCEMENT	EXCEL
9	6105-T6 ALUMINUM STILE REINFORCEMENT	EXCEL
10	6105-T5 ALUMINUM MEETING STILE REINFORCEMENT	EXCEL
11	6061-T6 ALUMINUM ROLLER TRACK	EXCEL
12	430 STAINLESS STEEL ROLLER TRACK CAP	QUANEX
13	LEGACY HANDLE SET	SASH CONTROLS
14	GEMINI MULTI-POINT LOCK	SASH CONTROLS
15	GEMINI MULTIPPOINT KEEPER	SASH CONTROLS
16	ROLLER ASSEMBLY	TRUTH
17	6063-T6 ALUMINUM FIXED SASH BRACKET	VINYLINE
18	6063-T6 ALUMINUM SNUBBER	EXCEL
19	HEAD & SILL GASKET	QSO
20	896 HIS GLAZING COMPOUND	PECORA
21	#10 WOOD SCREW (SEE SHEET 4 FOR LENGTHS)	-
22	3/16"Ø ITW TAPCON (SEE SHEET 4 FOR LENGTHS)	-
23	#8 X 7/8" PH FLAT TEKS SCREW (INTERLOCK)	ATLAS
24	#8 X 1 1/2" PH TRUSS SCREW (KEEPER)	ATLAS
25	#6 X 1/2" PH FLAT SCREW (ROLLER TRACK)	ATLAS
26	#10 X 1 1/2" PH FLAT SCREW (BRACKET)	ATLAS
27	#8 X 2 1/2" PH PAN TYPE A SCREW (FRAME ASSEMBLY)	ATLAS
28	0.250" X 0.270" FINSEAL WEATHER STRIPPING	AMESBURY
29	0.270" X 0.270" FINSEAL WEATHER STRIPPING	AMESBURY
30	VINYL THRESHOLD	DECEUNINCK*

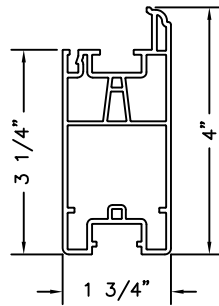
*NOA #09-0429.04



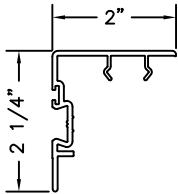
① 1199 DOOR FRAME
0.060" INTERIOR WALL
0.090" EXTERIOR WALL



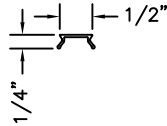
② 1104 TRACK COVER
0.080" WALL THICKNESS



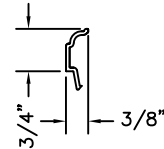
③ 1102 DOOR SASH
0.065" INTERIOR WALL
0.080" EXTERIOR WALL



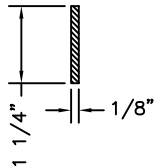
④ 1117 INTERLOCK
0.080" WALL THICKNESS



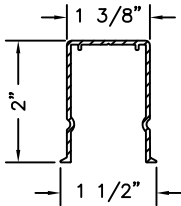
⑤ 1118 SCREW COVER
0.040" WALL THICKNESS



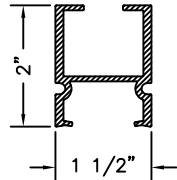
⑥ 1111 GLAZING BEAD
0.060" WALL THICKNESS



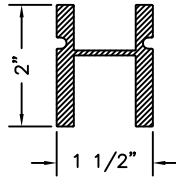
⑦ 12100 FRAME REINFORCEMENT
6063-T5 ALUMINUM



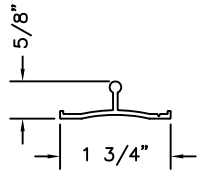
⑧ 21110 SASH REINFORCEMENT
6063-T6 ALUMINUM
0.065" WALL THICKNESS



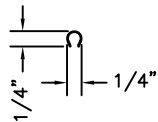
⑨ 23441 SASH REINFORCEMENT
6105-T6 ALUMINUM
0.130" WALL THICKNESS



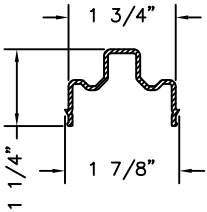
⑩ 22467 SASH REINFORCEMENT
6105-T6 ALUMINUM
0.277" WALL THICKNESS



⑪ 011H068 ROLLER TRACK
6061-T6 ALUMINUM



⑫ ROLLER TRACK CAP
430 STAINLESS STEEL



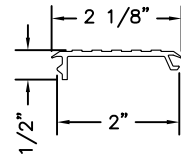
⑬ 23111 SNUBBER
6063-T6 ALUMINUM
0.065" WALL THICKNESS



⑭ 0.250" X 0.270"
FINSEAL WEATHER STRIPPING



⑮ 0.270" X 0.270"
FINSEAL WEATHER STRIPPING



⑯ DOOR THRESHOLD
0.113" WALL THICKNESS



12/03/2023
LUCAS A. TURNER, P.E.
FL PE # 58201
TURNER ENGINEERING &
CONSULTING, INC.
(COA # 29779)
2428 OLD NATCHEZ TRACE
TRAIL,
CAMDEN, TN 38320
PH. 941-380-1574



SIZE: B	DRAWING NO.: DA0010	REV.: 5
DRAWN BY: T.D.D.	DATE: 01/14/13	CHECKED BY: DATE:
SCALE: FIT	SHEET: 5 of 5	APPRVD BY: DATE:
SERIES: STORMBREAKER PLUS 300VL 2-PANEL SLIDING PATIO DOOR		
TITLE: BILL OF MATERIALS & COMPONENTS		