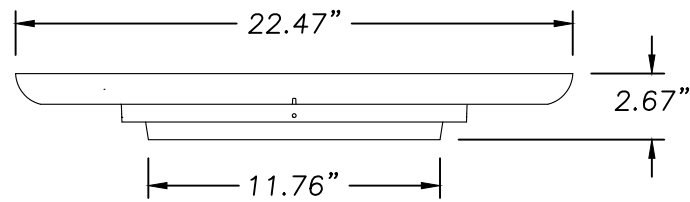
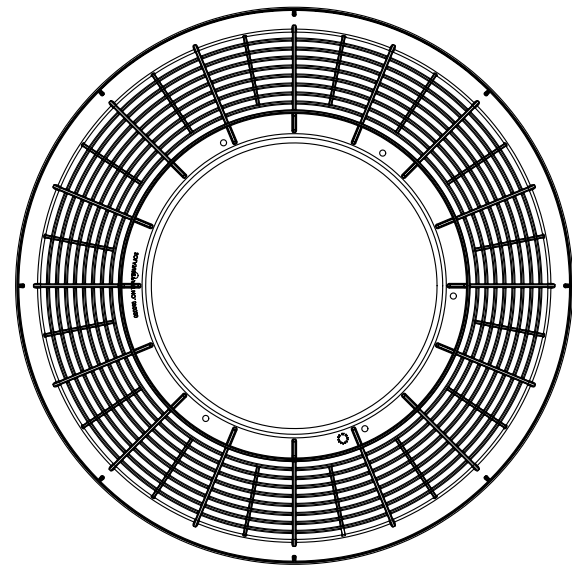
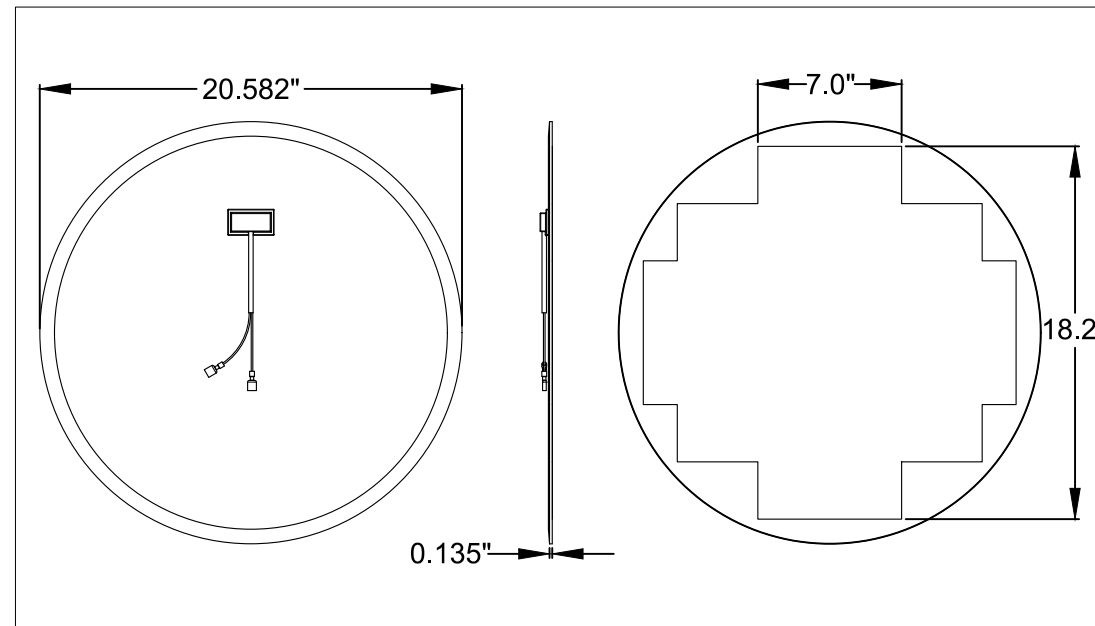


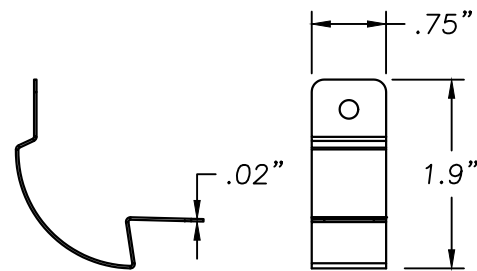
⑫ **FLASHING 14" NO PITCH 6"**
ALUMINIZED STEEL EDDS T1-25 .028" THICK



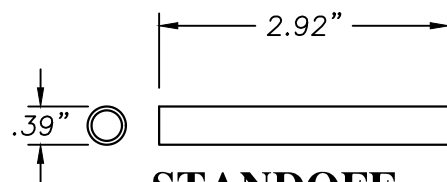
② **FAN GRILL, SOLAR STAR 14"**
POLYPROPYLENE .120" THICK



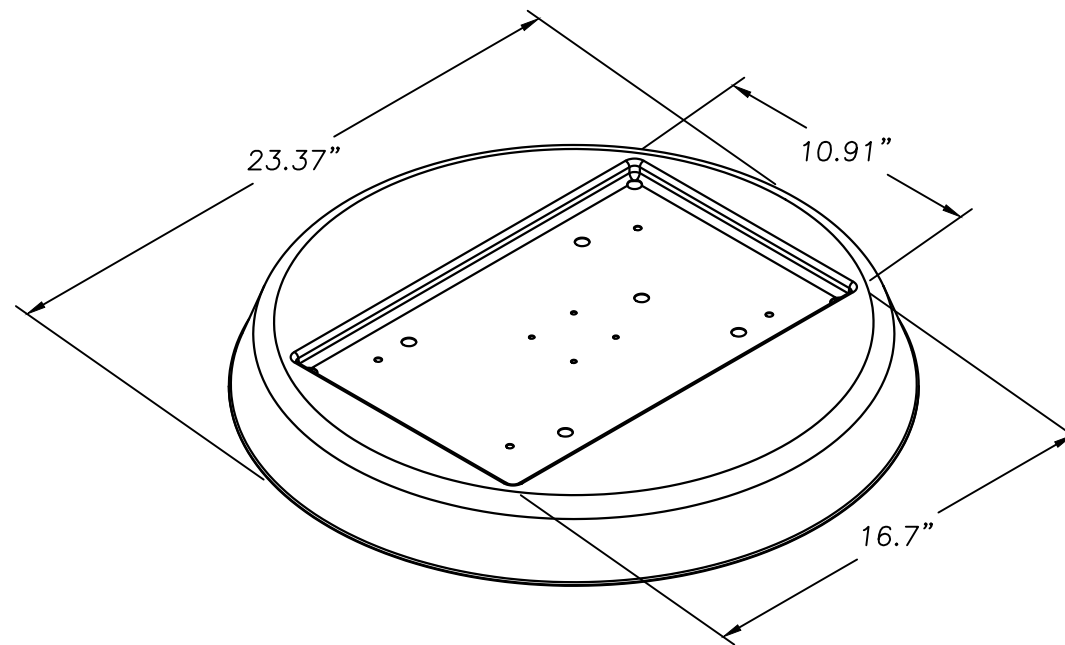
④ **RM-2400 SOLAR PANEL**
TYPICAL CONFIGURATION SHOWN
ABOVE. SOLAR PANEL LAYOUT MAY
VARY.



⑬ **SPRING CLIP HVHZ**
301 STAINLESS STEEL .020" THICK



① **STANDOFF,**
10 x 1 x 74
ALUMINUM 6061-T6 .039" THICK



③ **TOP PANEL SS 14" BLACK**
ALUMINIZED STEEL EDDS T1-25 .028" THICK

PROJECT NUMBER: 417-0905

REV	DESCRIPTION	DATE	BY
B	UPDATE TO 6TH EDITION (2017) FBC	2/6/18	RJA
A	UPDATED TO 5TH EDITION (2014) FBC	5/11/15	JBH

SOLATUBE
2210 OAK RIDGE WAY
VISTA, CALIFORNIA 92081-8341

TITLE:
SOLATUBE "SOLAR STAR"
HIGH PROFILE RM-2400 ROOF VENT
COMPONENTS

DATE: 08/23/12
DRAWING NO: SOLA0007
SHEET: 3 OF 4

DRAWN BY: RJA
SCALE: N.T.S.
REV: B

PREPARED BY:
FBPE
PTC PRODUCT DESIGN GROUP, LLC
PO BOX 520775
LONGWOOD, FLORIDA 32752
Phone: 321.690.1788
Fax: 321.690.1789
Email: info@ptc-corp.com

Robert J. Amoruso, P.E.
FL P.E. No. 49752

