

REVISIONS			
REV	DESCRIPTION	DATE	APPROVED


NOTES:

1. THE PRODUCT SHOWN HEREIN IS DESIGNED AND MANUFACTURED TO COMPLY WITH REQUIREMENTS OF THE FLORIDA BUILDING CODE.
2. WOOD FRAMING AND MASONRY OPENING TO BE DESIGNED AND ANCHORED TO PROPERLY TRANSFER ALL LOADS TO STRUCTURE. FRAMING AND MASONRY OPENING IS THE RESPONSIBILITY OF THE ARCHITECT OR ENGINEER OF RECORD.
3. 1X BUCK OVER MASONRY/CONCRETE IS OPTIONAL. WHERE 1X BUCK IS NOT USED DISSIMILAR MATERIALS MUST BE SEPARATED WITH APPROVED COATING OR MEMBRANE. SELECTION OF COATING OR MEMBRANE IS THE RESPONSIBILITY OF THE ARCHITECT OR ENGINEER OF RECORD.
4. ALLOWABLE STRESS INCREASE OF 1/3 WAS NOT USED IN THE DESIGN OF THE PRODUCT SHOWN HEREIN. WIND LOAD DURATION FACTOR Cd=1.6 WAS USED FOR WOOD ANCHOR CALCULATIONS.
5. FRAME MATERIAL: EXTRUDED ALUMINUM 6063-T6.
6. UNITS MUST BE GLAZED PER ASTM E1300-04, WITH SAFETY GLAZING.
7. APPROVED IMPACT PROTECTIVE SYSTEM IS REQUIRED FOR THIS PRODUCT IN WIND BORNE DEBRIS REGIONS.
8. SHIM AS REQUIRED AT EACH INSTALLATION ANCHOR WITH LOAD BEARING SHIM. SHIM WHERE SPACE OF 1/16" OR GREATER OCCURS. MAXIMUM ALLOWABLE SHIM STACK TO BE 1/4".
9. FOR ANCHORING INTO WOOD FRAMING OR 2X BUCK USE #12 WOOD SCREWS WITH SUFFICIENT LENGTH TO ACHIEVE A 1 3/8" MINIMUM EMBEDMENT INTO SUBSTRATE. LOCATE ANCHORS AS SHOWN IN ELEVATIONS AND INSTALLATION DETAILS.
10. FOR ANCHORING INTO MASONRY/CONCRETE USE 1/4" TAPCONS WITH SUFFICIENT LENGTH TO ACHIEVE A 1 1/4" MINIMUM EMBEDMENT INTO SUBSTRATE WITH 2 1/2" MINIMUM EDGE DISTANCE. LOCATE ANCHORS AS SHOWN IN ELEVATIONS AND INSTALLATION DETAILS.
11. FOR ANCHORING TROUGH FRAME INTO METAL STRUCTURE USE #12 SMS OR SELF DRILLING SCREWS WITH SUFFICIENT LENGTH TO ACHIEVE 3 THREADS MINIMUM BEYOND STRUCTURE INTERIOR WALL. LOCATE ANCHORS AS SHOWN IN ELEVATIONS AND INSTALLATION DETAILS.
12. ALL FASTENERS TO BE CORROSION RESISTANT.

13. INSTALLATION ANCHORS SHALL BE INSTALLED IN ACCORDANCE WITH ANCHOR MANUFACTURER'S INSTALLATION INSTRUCTIONS AND ANCHORS SHALL NOT BE USED IN SUBSTRATES WITH STRENGTHS LESS THAN THE MINIMUM STRENGTH SPECIFIED BELOW:
- A. WOOD – MINIMUM SPECIFIC GRAVITY OF G=0.42
- B. CONCRETE – MINIMUM COMPRESSIVE STRENGTH OF 3,192 PSI.
- C. MASONRY – STRENGTH CONFORMANCE TO ASTM C-90, GRADE N, TYPE 1 (OR GREATER).
- D. METAL STRUCTURE: STEEL 18GA, 33KSI OR ALUMINUM 6063-T5 1/8" THICK MINIMUM
14. APPROVED CONFIGURATIONS: OXXO, XXO, OXX, OX, XX, XO.
15. UNITS MUST BE INSTALLED WITH 3 3/4" SILL RISER.

SIGNED: 04/30/2015

TABLE OF CONTENTS	
SHEET NO.	DESCRIPTION
1	NOTES
2	ELEVATION
3 – 12	INSTALLATION DETAILS



EASTERN ARCHITECTURAL SYSTEMS

A DIVISION OF

EASTERN METAL SUPPLY

16341 DOMESTIC AVE

FORT MYERS, FL 33912

800-432-2204

SERIES 600 ALUMINUM NON-IMPACT  
SLIDING GLASS DOOR OXXO  
NOTES

DRAWN:  
V.L.

DWG NO.  
08-02691

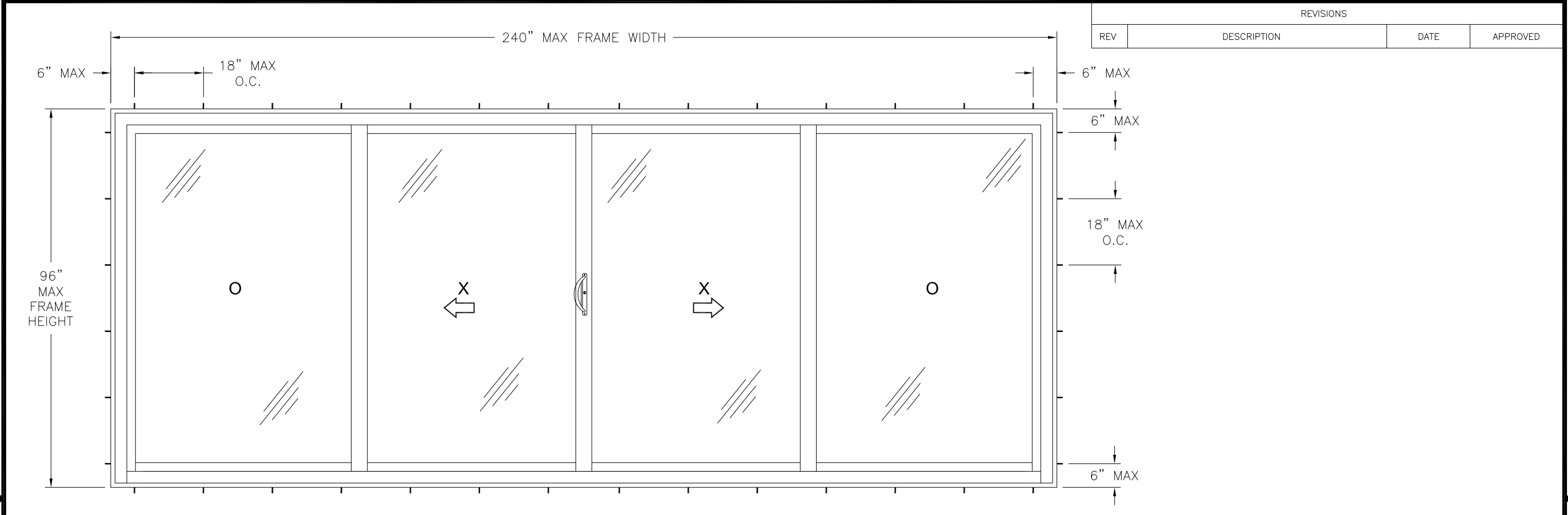
REV  
—

SCALE NTS

DATE 03/30/15

SHEET 1 OF 11





**SERIES 600 ALUMINUM NON-IMPACT SLIDING GLASS DOOR OXXO**  
EXTERIOR VIEW

DESIGN PRESSURE RATING	IMPACT RATING
±80.0PSF	NONE

- NOTES:
- (6) 1 7/8" WEEP NOTCH ONE AT EACH END OF PANEL TRACK AND SCREEN RETAINER TRACK.
  - MAXIMUM PANEL SIZE: 62" X 94"
  - MAXIMUM D.L.O.: 56 1/4" X 90 1/4"

HARDWARE SCHEDULE	
A.	(1) FLUSH MOUNTMETALLIC HOOK LOCK AT 41" FROM BOTTOM MOVING PANEL LOCK STILE
B.	(1) METALLIC KEEPER AT 39 1/2" FROM BOTTOM FEMALE ASTRAGAL STILE
C.	(2) ADJUSTABLE SINGLE STEEL WHEELS IN ALUMINUM HOUSING AT EACH PANEL BOTTOM RAIL
D.	5/8"X 89 1/2" ALUMINUM REINFORCEMENT BAR AT INTERLOCK STILES



EASTERN ARCHITECTURAL SYSTEMS  
A DIVISION OF  
EASTERN METAL SUPPLY

16341 DOMESTIC AVE  
FORT MYERS, FL 33912  
800-432-2204

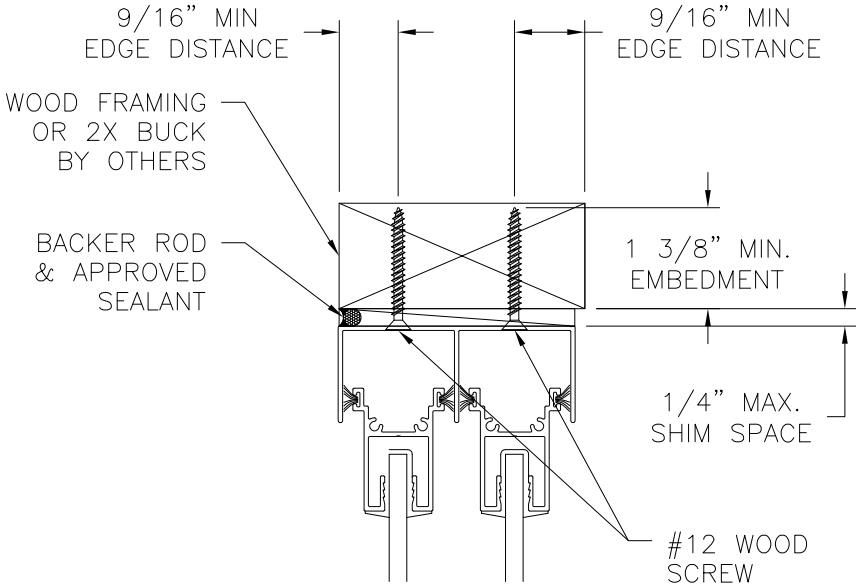
SERIES 600 ALUMINUM NON-IMPACT  
SLIDING GLASS DOOR OXXO  
ELEVATION

DRAWN: V.L.	DWG NO. 08-02691	REV —
SCALE NTS	DATE 03/30/15	SHEET 2 OF 11

SIGNED: 04/30/2015

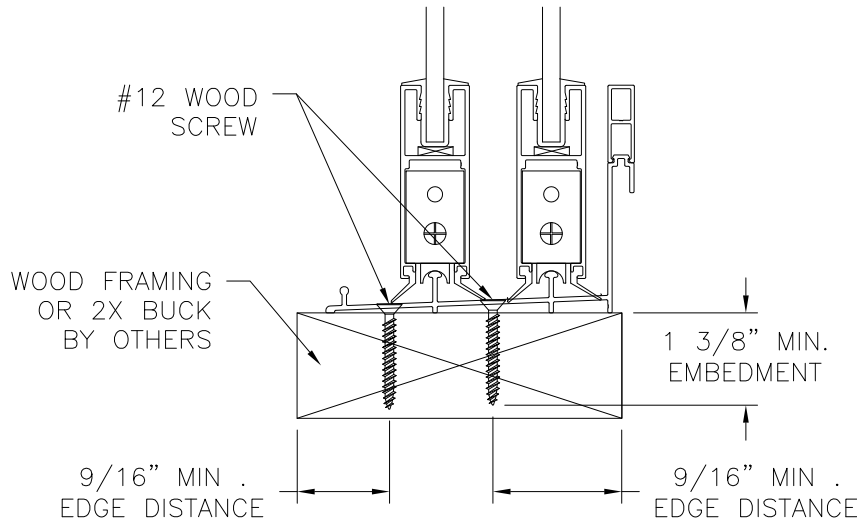


REVISIONS			
REV	DESCRIPTION	DATE	APPROVED

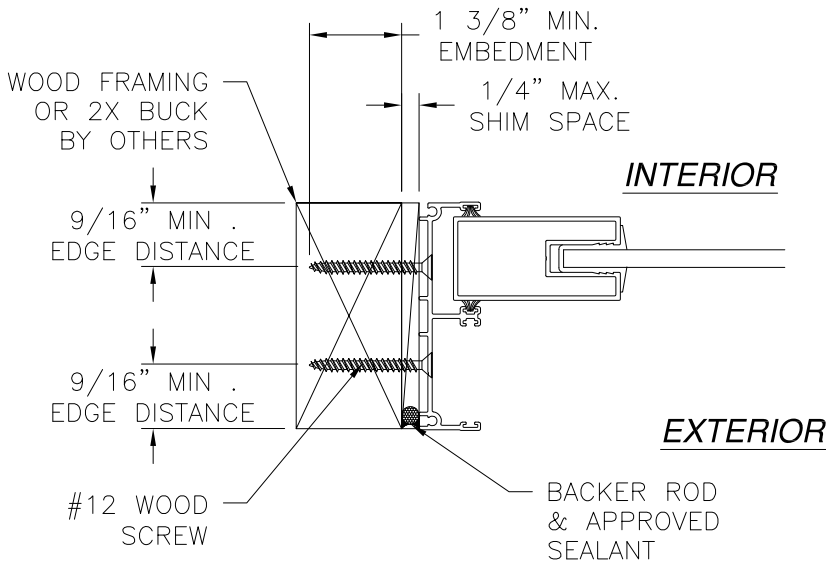


EXTERIOR

INTERIOR



**VERTICAL CROSS SECTION**  
WOOD FRAMING OR 2X BUCK INSTALLATION



**JAMB INSTALLATION DETAIL**  
WOOD FRAMING OR 2X BUCK INSTALLATION

NOTES:  
1. INTERIOR AND EXTERIOR FINISHES, BY OTHERS,  
NOT SHOWN FOR CLARITY.  
2. PERIMETER AND JOINT SEALANT BY OTHERS TO BE  
DESIGNED IN ACCORDANCE WITH ASTM E2112

SIGNED: 04/30/2015



EASTERN ARCHITECTURAL SYSTEMS

A DIVISION OF

EASTERN METAL SUPPLY

16341 DOMESTIC AVE

FORT MYERS, FL 33912

800-432-2204

SERIES 600 ALUMINUM NON-IMPACT  
SLIDING GLASS DOOR OXXO  
2-TRACK INSTALLATION DETAILS

DRAWN:  
V.L.

DWG NO.  
08-02691

REV  
-

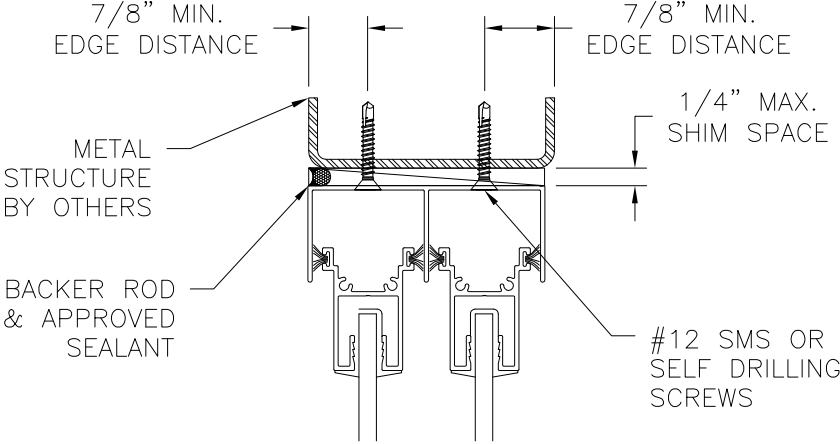
SCALE  
NTS

DATE  
03/30/15

SHEET  
3 OF 11

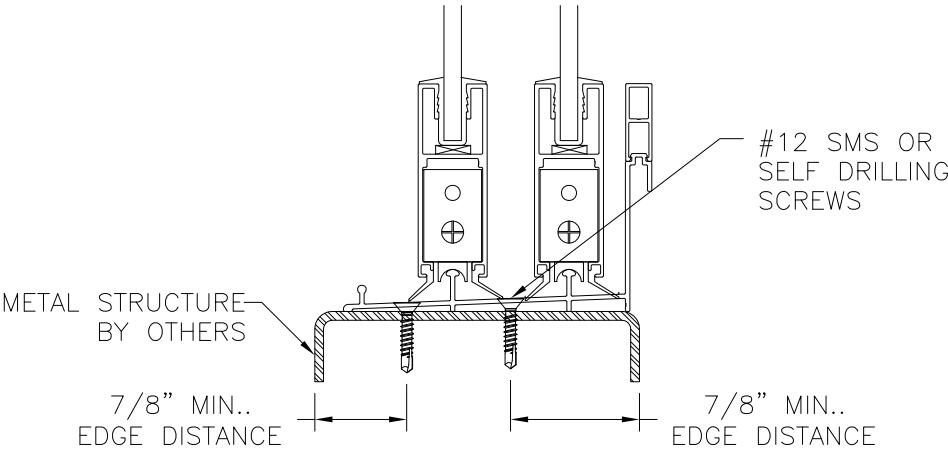


REVISIONS			
REV	DESCRIPTION	DATE	APPROVED

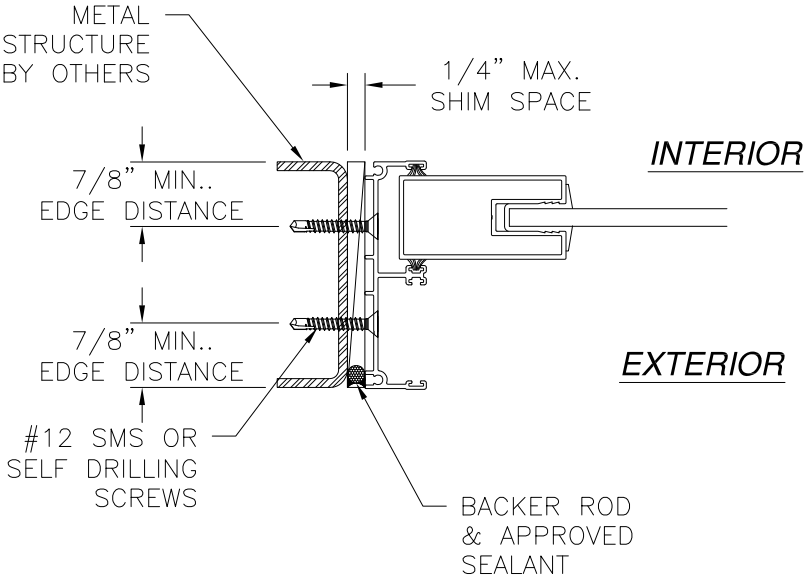


EXTERIOR

INTERIOR




VERTICAL CROSS SECTION  
METAL STRUCTURE INSTALLATION




JAMB INSTALLATION DETAIL  
METAL STRUCTURE INSTALLATION

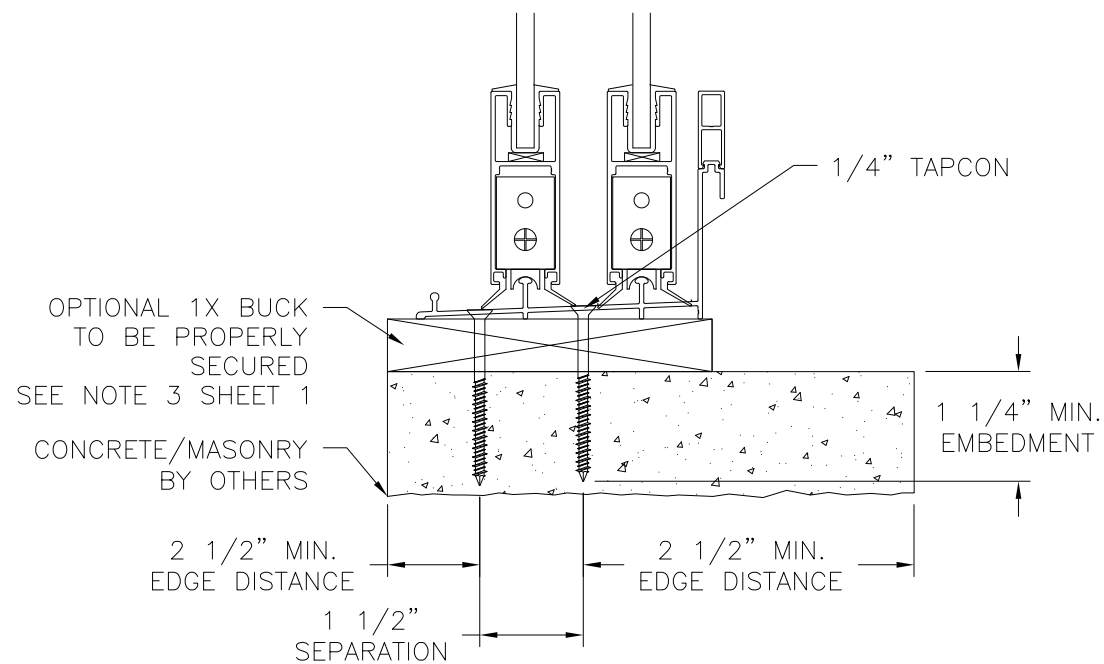
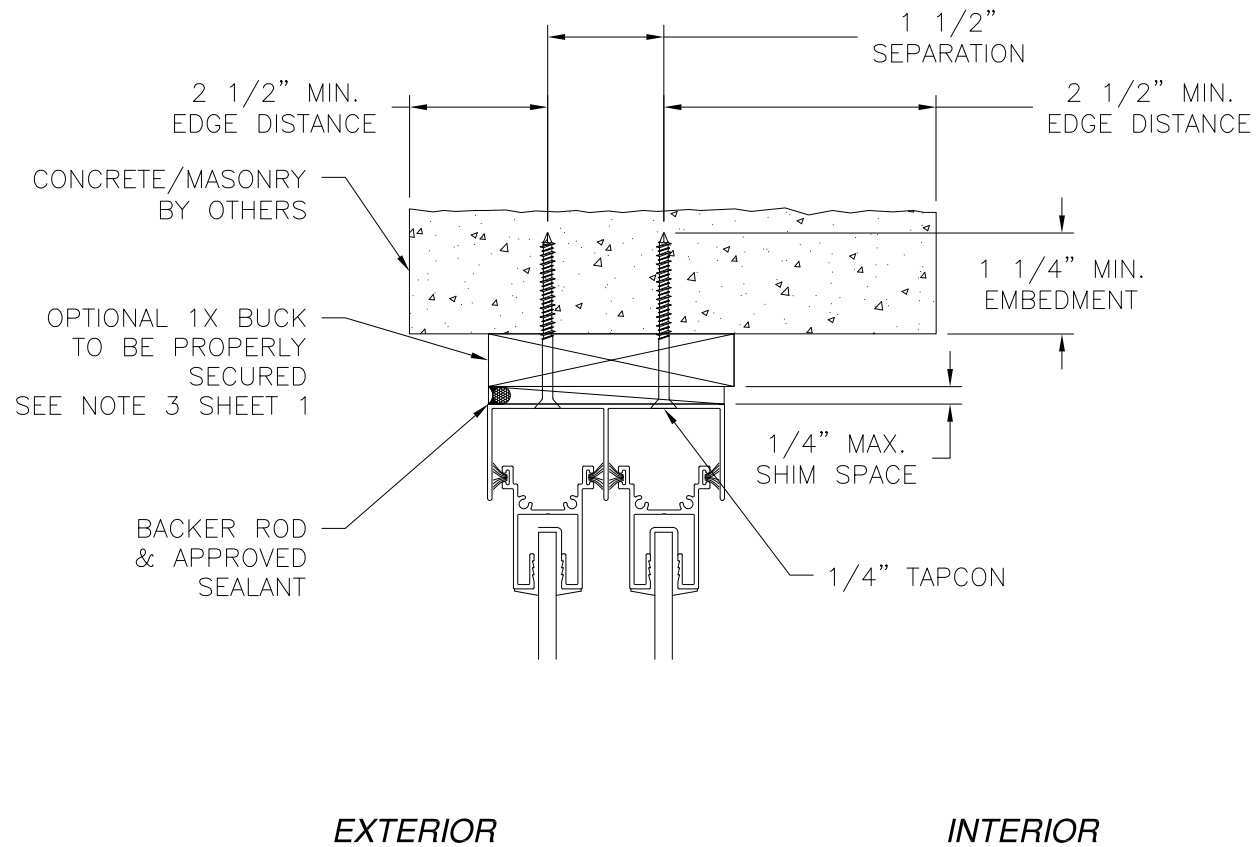
NOTES:  
1. INTERIOR AND EXTERIOR FINISHES, BY OTHERS,  
NOT SHOWN FOR CLARITY.  
2. PERIMETER AND JOINT SEALANT BY OTHERS TO BE  
DESIGNED IN ACCORDANCE WITH ASTM E2112

SIGNED: 04/30/2015

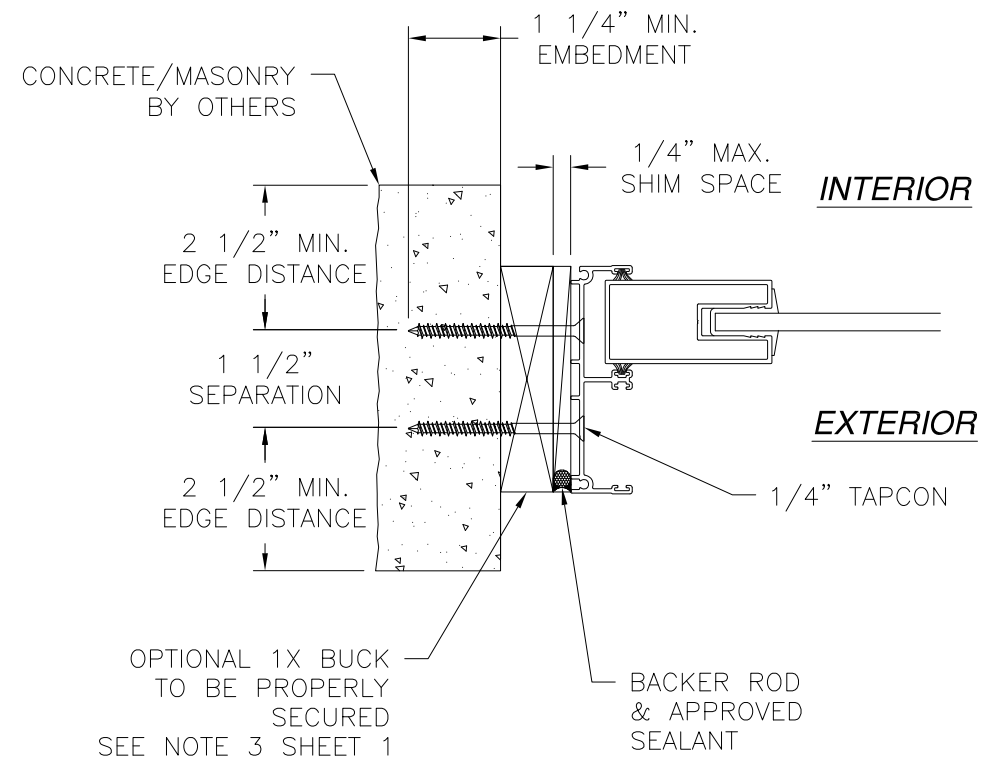
		EASTERN ARCHITECTURAL SYSTEMS A DIVISION OF EASTERN METAL SUPPLY 16341 DOMESTIC AVE FORT MYERS, FL 33912 800-432-2204	
SERIES 600 ALUMINUM NON-IMPACT SLIDING GLASS DOOR OXXO 2-TRACK INSTALLATION DETAILS			
DRAWN: V.L.		DWG NO. 08-02691	
SCALE NTS		DATE 03/30/15	
		SHEET 4 OF 11	



REVISIONS			
REV	DESCRIPTION	DATE	APPROVED



**VERTICAL CROSS SECTION**  
CONCRETE/MASONRY INSTALLATION



**JAMB INSTALLATION DETAIL**  
CONCRETE/MASONRY INSTALLATION

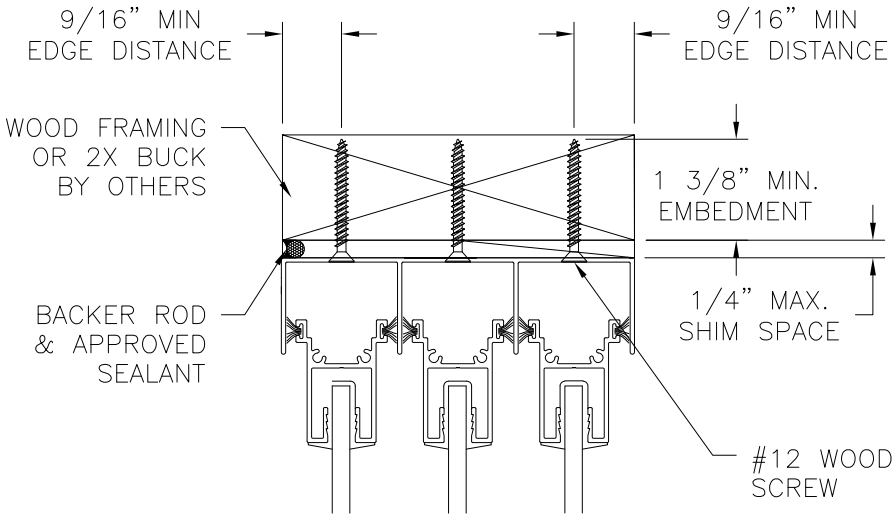
- NOTES:**  
1. INTERIOR AND EXTERIOR FINISHES, BY OTHERS, NOT SHOWN FOR CLARITY.  
2. PERIMETER AND JOINT SEALANT BY OTHERS TO BE DESIGNED IN ACCORDANCE WITH ASTM E2112

SIGNED: 04/30/2015

 <b>Eastern</b> ARCHITECTURAL SYSTEMS ALUMINUM AND VINYL IMPACT WINDOWS AND DOORS		EASTERN ARCHITECTURAL SYSTEMS A DIVISION OF EASTERN METAL SUPPLY 16341 DOMESTIC AVE FORT MYERS, FL 33912 800-432-2204	
SERIES 600 ALUMINUM NON-IMPACT SLIDING GLASS DOOR OXXO 2-TRACK INSTALLATION DETAILS			
DRAWN: V.L.		DWG NO. 08-02691	
SCALE NTS		DATE 03/30/15	
SHEET 5 OF 11		REV —	

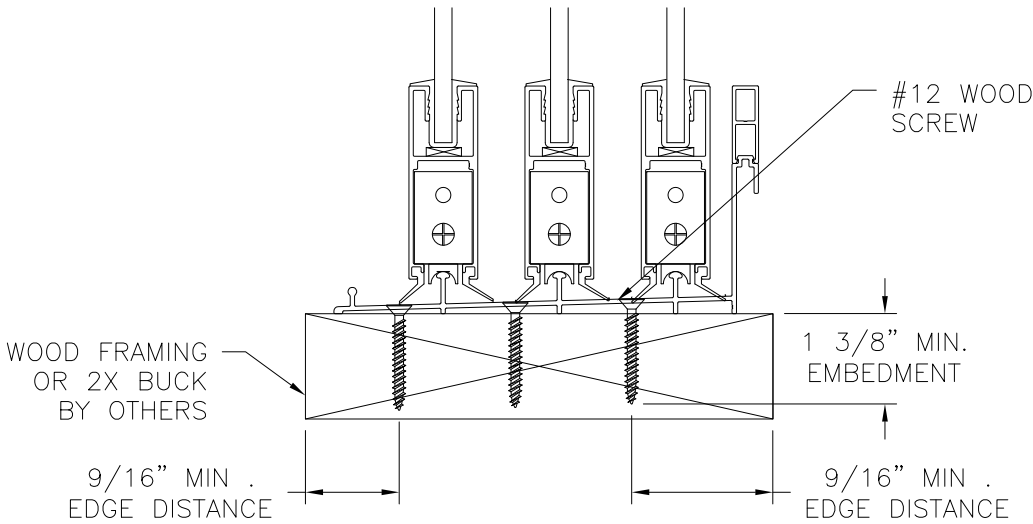


REVISIONS			
REV	DESCRIPTION	DATE	APPROVED



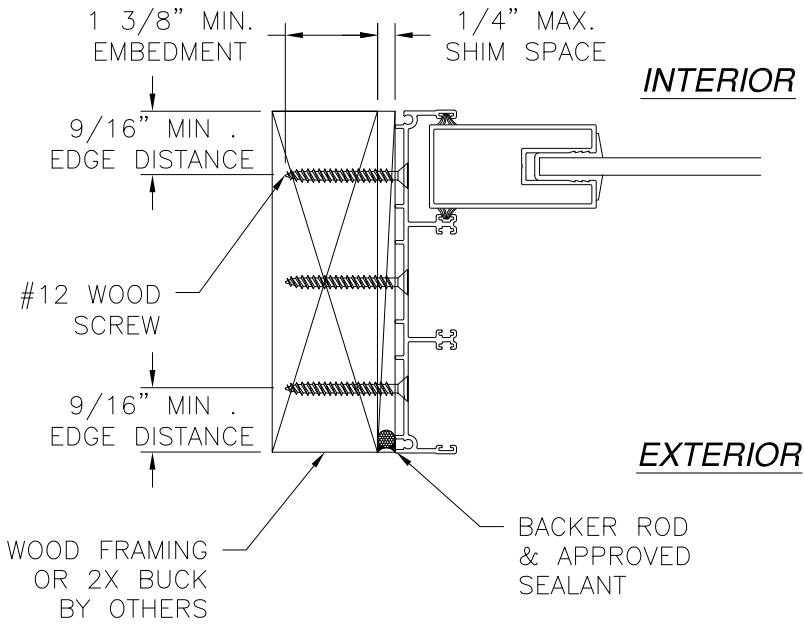
EXTERIOR

INTERIOR



**VERTICAL CROSS SECTION**


WOOD FRAMING OR 2X BUCK INSTALLATION



**JAMB INSTALLATION DETAIL**  
WOOD FRAMING OR 2X BUCK INSTALLATION

NOTES:  
1. INTERIOR AND EXTERIOR FINISHES, BY OTHERS,  
NOT SHOWN FOR CLARITY.  
2. PERIMETER AND JOINT SEALANT BY OTHERS TO BE  
DESIGNED IN ACCORDANCE WITH ASTM E2112

SIGNED: 04/30/2015



EASTERN ARCHITECTURAL SYSTEMS  
A DIVISION OF  
EASTERN METAL SUPPLY

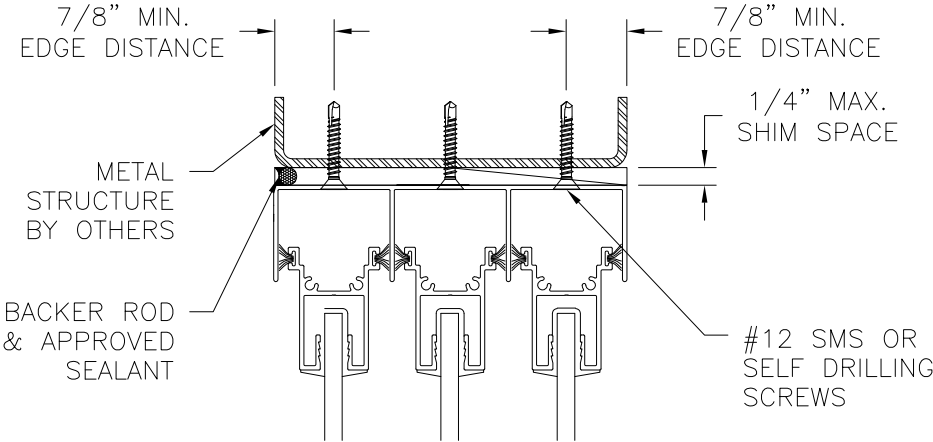
16341 DOMESTIC AVE  
FORT MYERS, FL 33912  
800-432-2204

SERIES 600 ALUMINUM NON-IMPACT  
SLIDING GLASS DOOR OXXO  
3-TRACK INSTALLATION DETAILS

DRAWN: V.L.	DWG NO. 08-02691	REV —
SCALE NTS	DATE 03/30/15	SHEET 6 OF 11

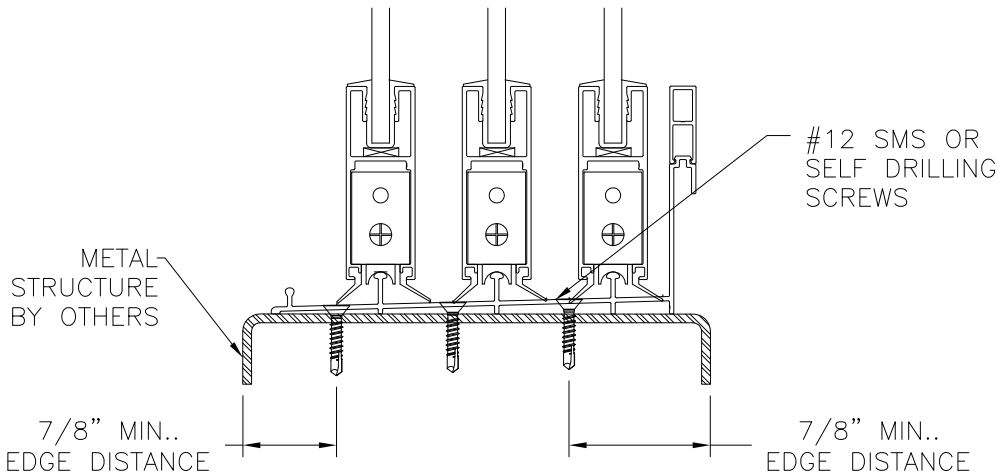


REVISIONS			
REV	DESCRIPTION	DATE	APPROVED

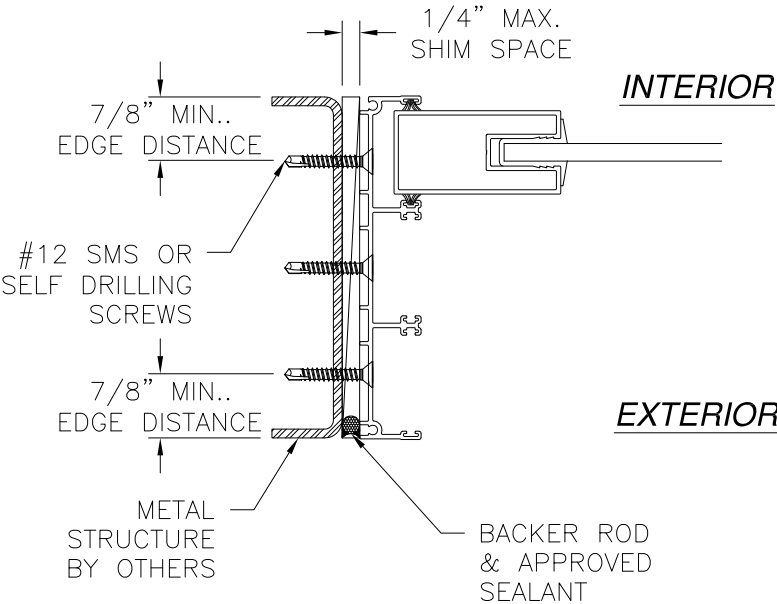


EXTERIOR

INTERIOR




VERTICAL CROSS SECTION  
METAL STRUCTURE INSTALLATION



JAMB INSTALLATION DETAIL  
METAL STRUCTURE INSTALLATION

NOTES:  
1. INTERIOR AND EXTERIOR FINISHES, BY OTHERS, NOT SHOWN FOR CLARITY.  
2. PERIMETER AND JOINT SEALANT BY OTHERS TO BE DESIGNED IN ACCORDANCE WITH ASTM E2112

SIGNED: 04/30/2015



EASTERN ARCHITECTURAL SYSTEMS  
A DIVISION OF  
EASTERN METAL SYPLY

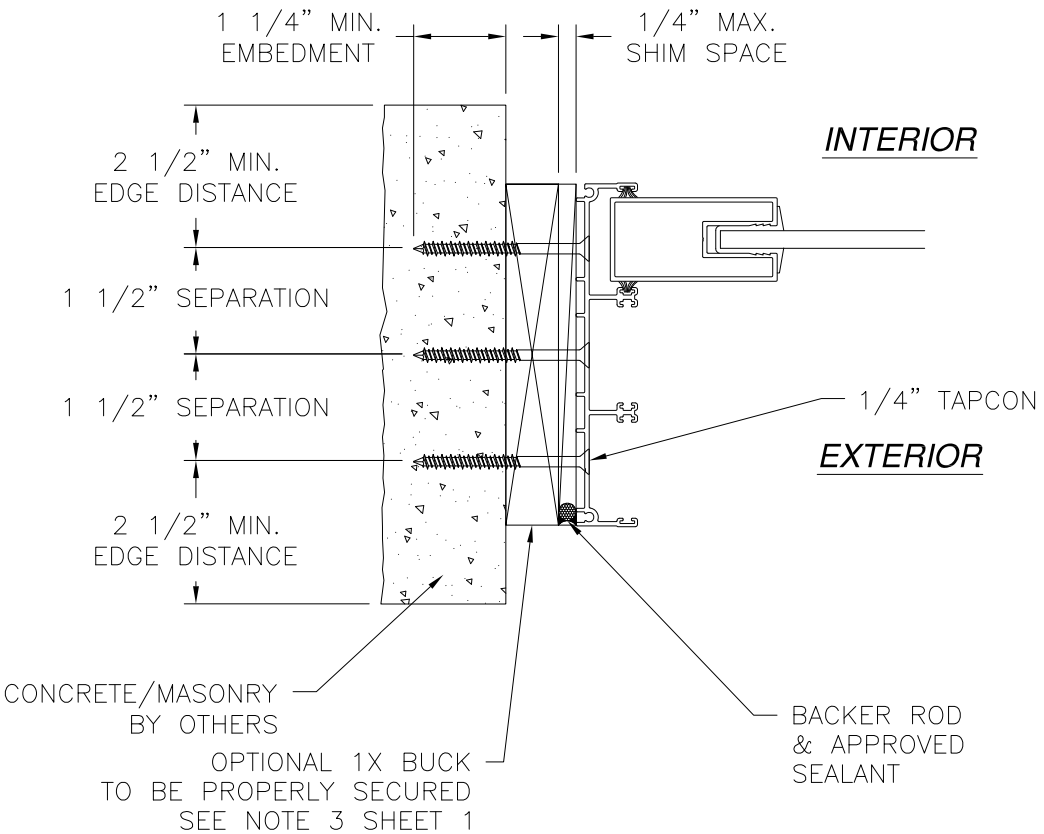
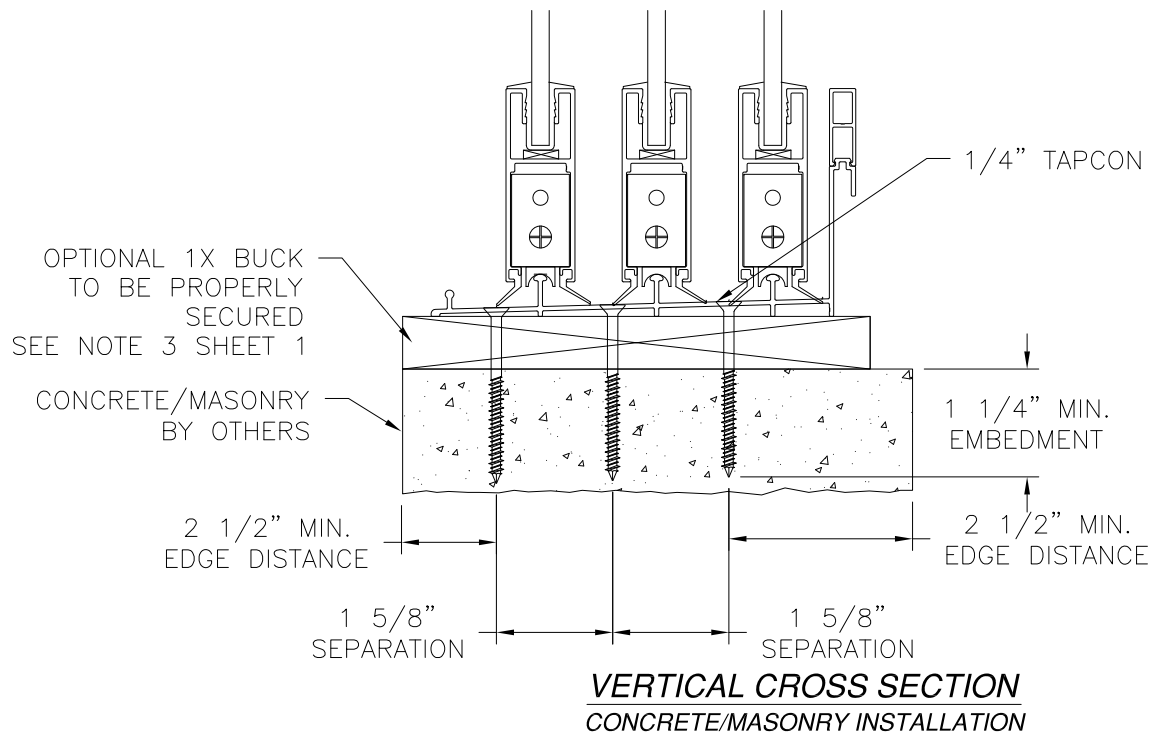
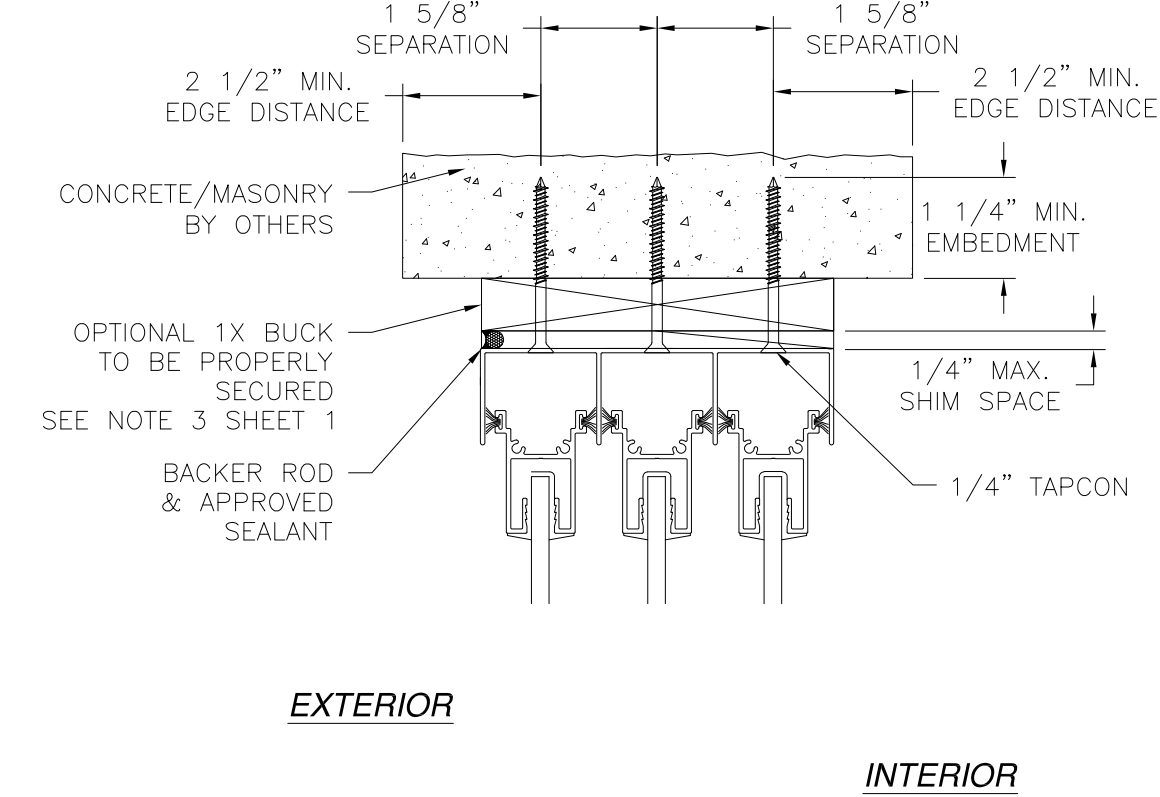
16341 DOMESTIC AVE  
FORT MYERS, FL 33912  
800-432-2204

SERIES 600 ALUMINUM NON-IMPACT  
SLIDING GLASS DOOR OXXO  
3-TRACK INSTALLATION DETAILS

DRAWN: V.L.	DWG NO. 08-02691	REV —
SCALE NTS	DATE 03/30/15	SHEET 7 OF 11



REVISIONS			
REV	DESCRIPTION	DATE	APPROVED



JAMB INSTALLATION DETAIL  
CONCRETE/MASONRY INSTALLATION

- NOTES:
1. INTERIOR AND EXTERIOR FINISHES, BY OTHERS, NOT SHOWN FOR CLARITY.
  2. PERIMETER AND JOINT SEALANT BY OTHERS TO BE DESIGNED IN ACCORDANCE WITH ASTM E2112

SIGNED: 04/30/2015



EASTERN ARCHITECTURAL SYSTEMS  
A DIVISION OF  
EASTERN METAL SUPPLY

16341 DOMESTIC AVE  
FORT MYERS, FL 33912  
800-432-2204

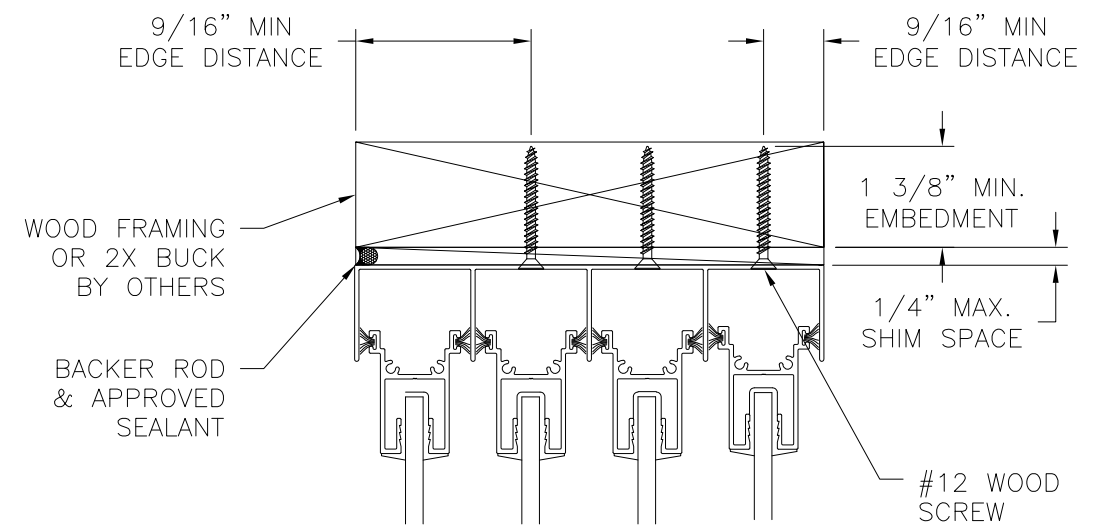
SERIES 600 ALUMINUM NON-IMPACT  
SLIDING GLASS DOOR OXXO  
3-TRACK INSTALLATION DETAILS

DRAWN: V.L.	DWG NO. 08-02691	REV -
SCALE NTS	DATE 03/30/15	SHEET 8 OF 11



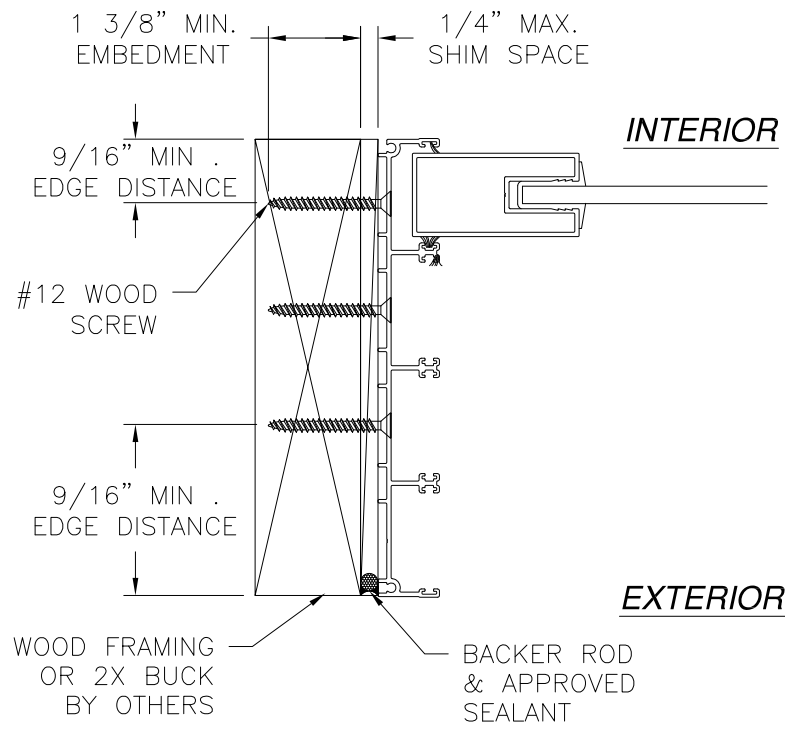
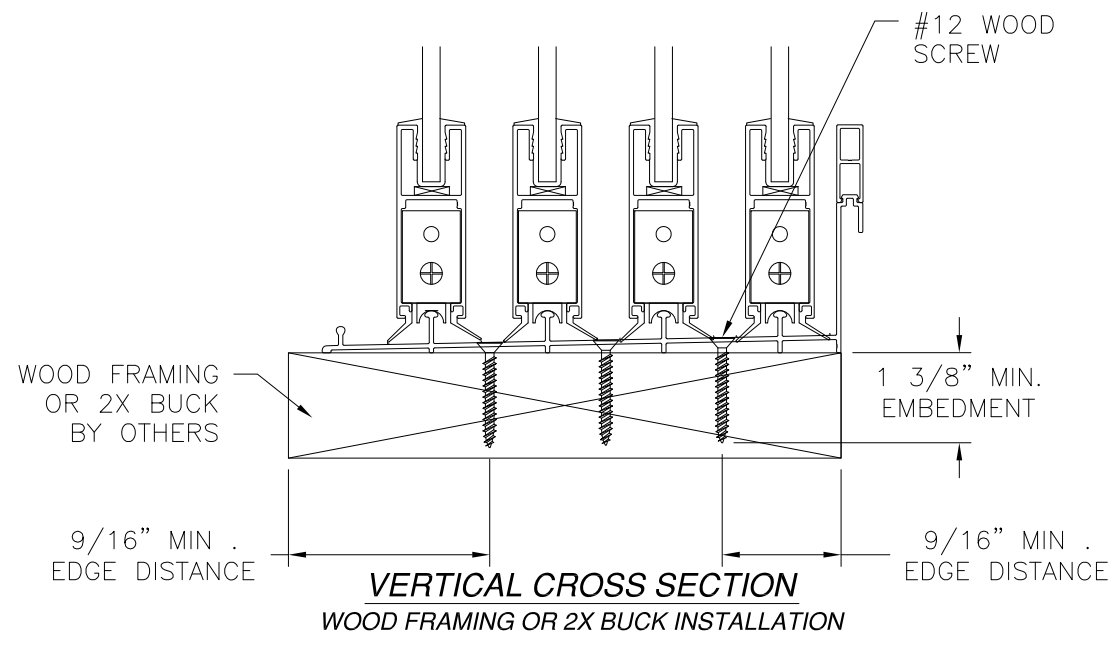


REVISIONS			
REV	DESCRIPTION	DATE	APPROVED



EXTERIOR

INTERIOR



JAMB INSTALLATION DETAIL  
WOOD FRAMING OR 2X BUCK INSTALLATION

NOTES:  
1. INTERIOR AND EXTERIOR FINISHES, BY OTHERS, NOT SHOWN FOR CLARITY.  
2. PERIMETER AND JOINT SEALANT BY OTHERS TO BE DESIGNED IN ACCORDANCE WITH ASTM E2112

SIGNED: 04/30/2015



**Eastern**  
ARCHITECTURAL SYSTEMS  
ALUMINUM AND VINYL IMPACT WINDOWS AND DOORS

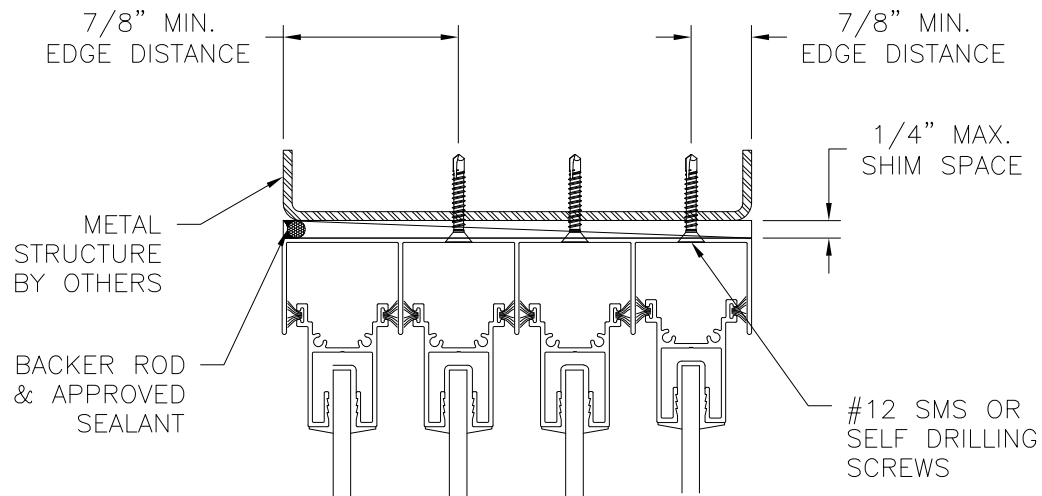
EASTERN ARCHITECTURAL SYSTEMS  
A DIVISION OF  
EASTERN METAL SUPPLY  
16341 DOMESTIC AVE  
FORT MYERS, FL 33912  
800-432-2204

SERIES 600 ALUMINUM NON-IMPACT  
SLIDING GLASS DOOR OXXO  
4-TRACK INSTALLATION DETAILS

DRAWN: V.L.	DWG NO. 08-02691	REV —
SCALE NTS	DATE 03/30/15	SHEET 9 OF 11

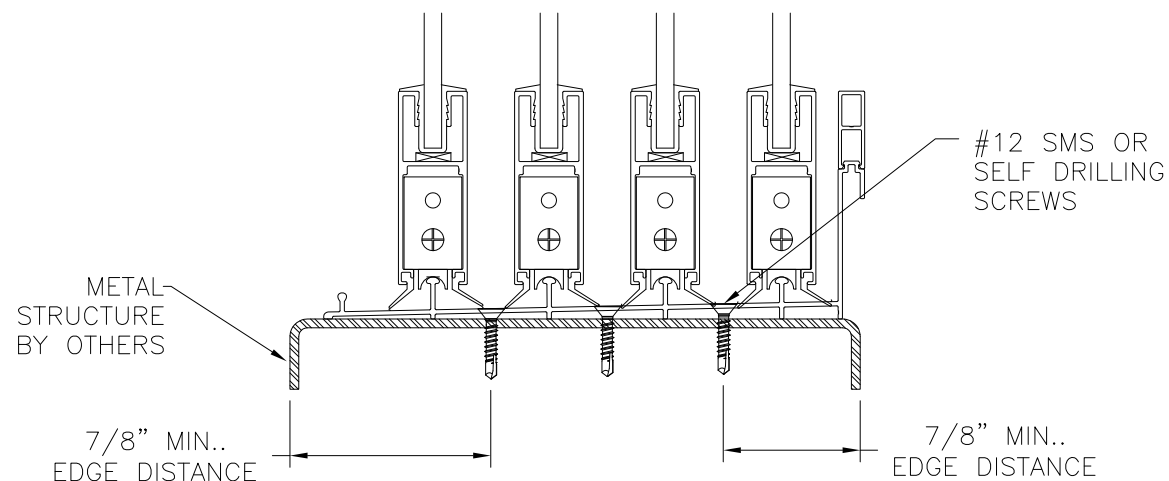


REVISIONS			
REV	DESCRIPTION	DATE	APPROVED

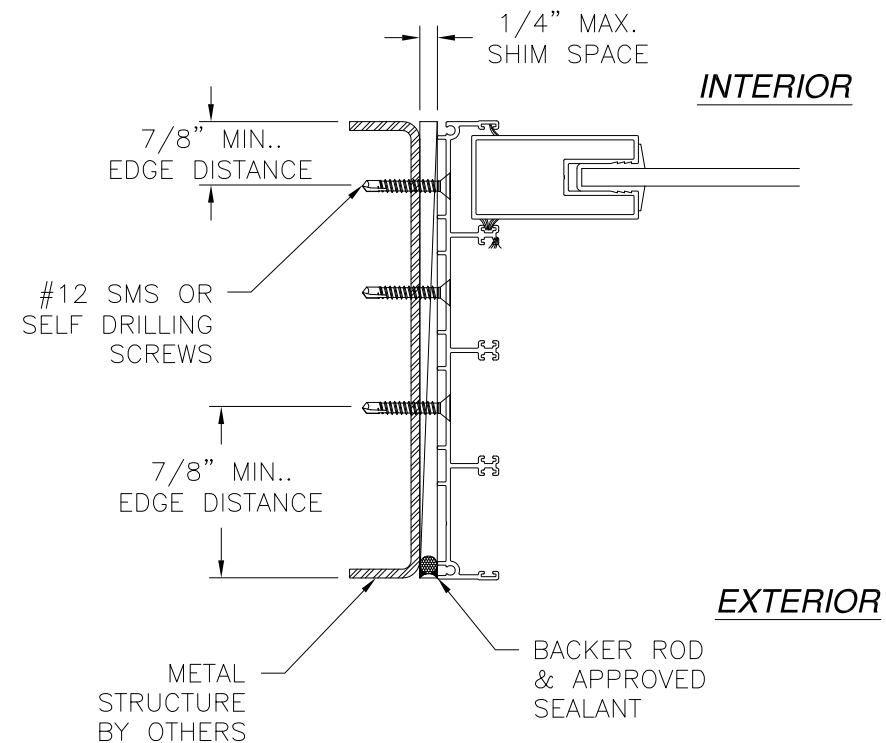


EXTERIOR

INTERIOR



**VERTICAL CROSS SECTION**  
METAL STRUCTURE INSTALLATION



**JAMB INSTALLATION DETAIL**  
METAL STRUCTURE INSTALLATION

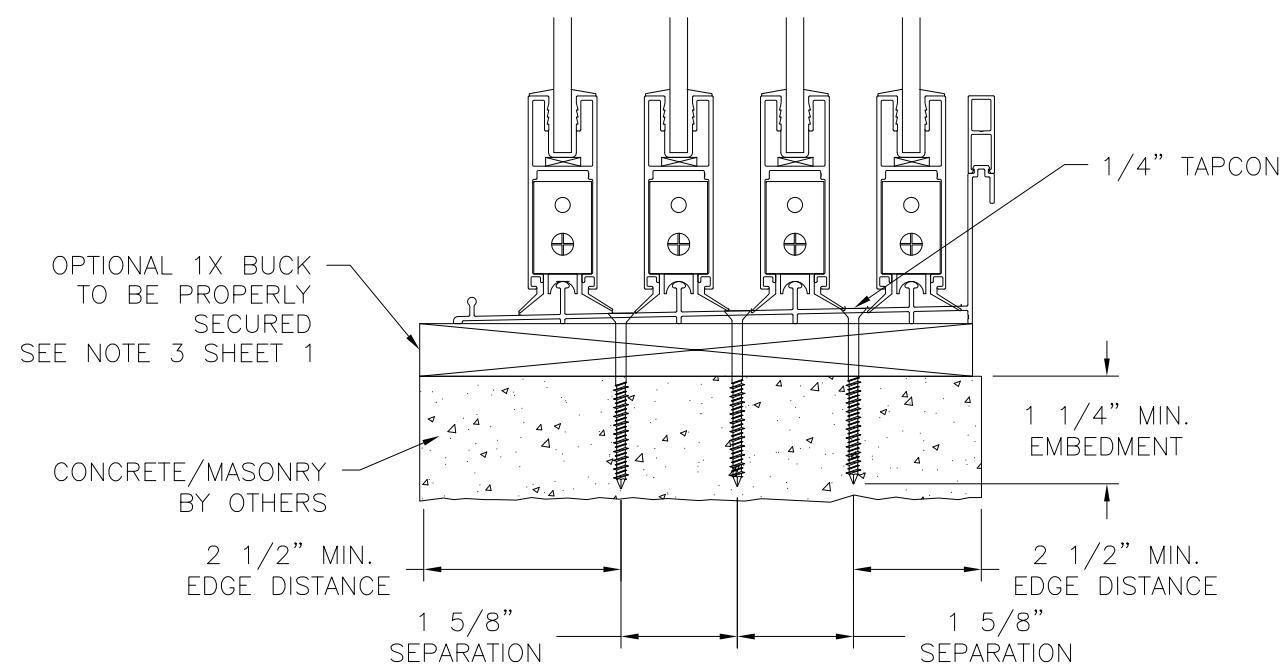
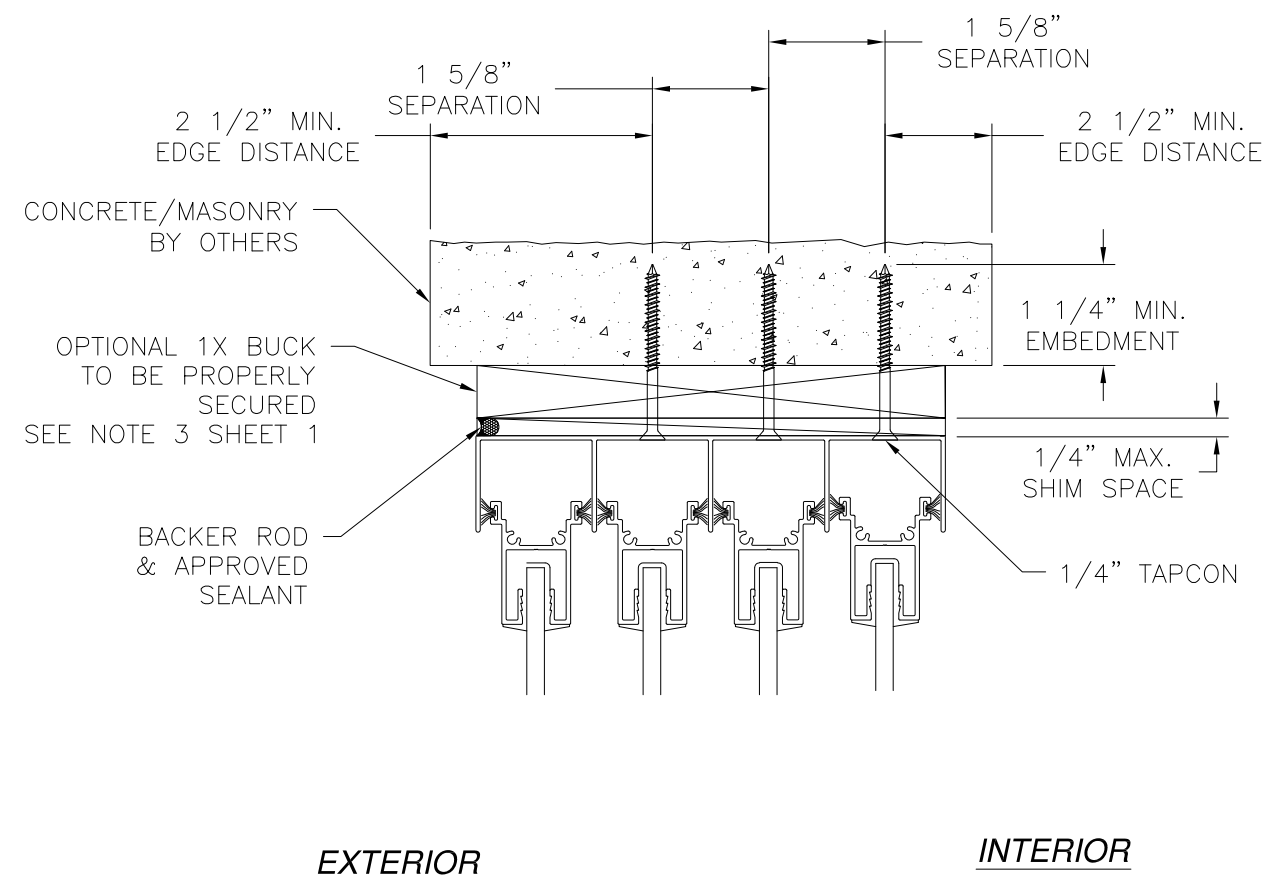
- NOTES:
1. INTERIOR AND EXTERIOR FINISHES, BY OTHERS, NOT SHOWN FOR CLARITY.
  2. PERIMETER AND JOINT SEALANT BY OTHERS TO BE DESIGNED IN ACCORDANCE WITH ASTM E2112

SIGNED: 04/30/2015

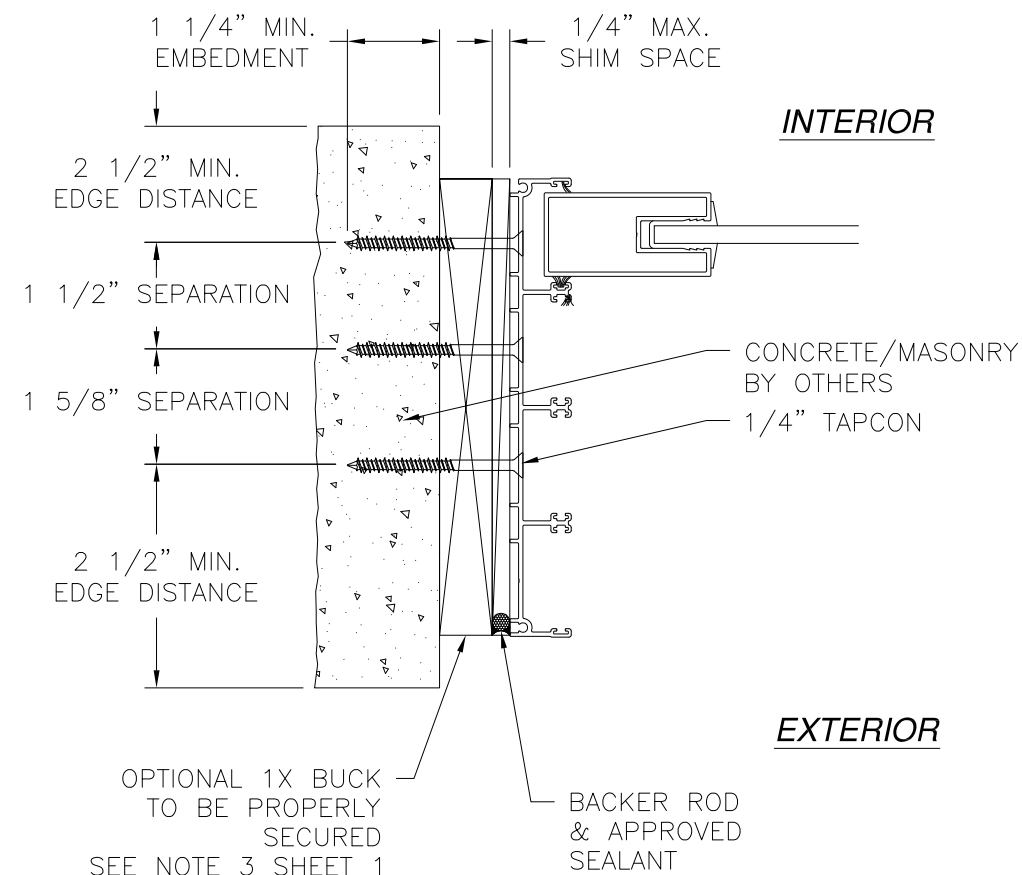
 <b>Eastern</b> ARCHITECTURAL SYSTEMS ALUMINUM AND VINYL IMPACT WINDOWS AND DOORS		EASTERN ARCHITECTURAL SYSTEMS A DIVISION OF EASTERN METAL SUPPLY 16341 DOMESTIC AVE FORT MYERS, FL 33912 800-432-2204	
SERIES 600 ALUMINUM NON-IMPACT SLIDING GLASS DOOR OXXO 4-TRACK INSTALLATION DETAILS			
DRAWN: V.L.		DWG NO. 08-02691	
SCALE NTS		DATE 03/30/15	
		SHEET 10 OF 11	



REVISIONS			
REV	DESCRIPTION	DATE	APPROVED



**VERTICAL CROSS SECTION**  
CONCRETE/MASONRY INSTALLATION



**JAMB INSTALLATION DETAIL**  
CONCRETE/MASONRY INSTALLATION

**NOTES:**

1. INTERIOR AND EXTERIOR FINISHES, BY OTHERS, NOT SHOWN FOR CLARITY.
2. PERIMETER AND JOINT SEALANT BY OTHERS TO BE DESIGNED IN ACCORDANCE WITH ASTM E2112

SIGNED: 04/30/2015



EASTERN ARCHITECTURAL SYSTEMS  
A DIVISION OF  
EASTERN METAL SUPPLY  
16341 DOMESTIC AVE  
FORT MYERS, FL 33912  
800-432-2204

SERIES 600 ALUMINUM NON-IMPACT  
SLIDING GLASS DOOR OXXO  
4-TRACK INSTALLATION DETAILS

DRAWN: V.L.	DWG NO. 08-02691	REV —
SCALE NTS	DATE 03/30/15	SHEET 11 OF 11

