

# FLORIDA PRODUCT APPROVAL DRAWINGS

## PW257 IMPACT-RESISTANT CAPTURED AND BUTT GLAZED CURTAIN WALL SYSTEM WITH MULTIPLE GLAZING INFILLS FOR USE IN HURRICANE ZONES REQUIRING LARGE MISSILE IMPACT PROTECTION

INDEX TO DRAWINGS	
1	INDEX TO DRAWINGS AND NOTES
2	FRAMING ELEVATION
3	FRAMING ELEVATION
4	GLAZING SCHEDULE
5	MULLION CHART
6	FRAMING DETAILS - WET GLAZED
7	FRAMING DETAILS - DRY GLAZED
8	FRAMING DETAILS
9	FRAMING DETAILS
10	FRAMING DETAILS - BUTT GLAZED
11	DOOR AND FRAMING DETAILS
12	DOOR AND FRAMING DETAILS
13	CAPTURED SPLICE DETAILS
14	BUTT GLAZED SPLICE DETAILS
15	CORNER SPLICE DETAILS
16	ANCHOR DETAILS
17	CORNER ANCHOR DETAIL
18	ANCHOR CHART
19	BILL OF MATERIALS
20	BILL OF MATERIALS
21	BILL OF MATERIALS
22	DIE DRAWINGS
23	DIE DRAWINGS

**ABBREVIATIONS:**

D.L.O. = DAY LIGHT OPENING  
D.O.H. = DOOR OPENING HEIGHT  
D.O.W. = DOOR OPENING WIDTH  
ELEVS = ELEVATIONS  
EXT. = EXTERIOR  
INT. = INTERIOR  
MAX. = MAXIMUM  
MIN. = MINIMUM  
OPP. = OPPOSITE  
TYP. = TYPICAL

**GENERAL NOTES:**

**TEST STANDARDS & METHODS**

TAS201-94, TAS202-94,  
TAS203-94  
ASTM E331-02, E330-02,  
E283-04,  
AAMA 501-05

**DESIGN PRESSURE:**

REF. SHEET 4 OF 21

**WATER INFILTRATION:** 16 PSF

**AIR INFILTRATION:** 6.24 PSF

ALL STRUCTURAL MEMBERS TO BE MADE FROM 6063-T6 ALUMINUM.  
INTERIOR & EXTERIOR TRIM SHALL BE MADE FROM 6063-T5 ALUMINUM.

REV	BY	DATE	DESCRIPTION
1	EAB	7/2/15	2014 FLORIDA BUILDING CODE

Coral

Architectural Products

3010 RICE MINE ROAD, TUSCALOOSA, AL 35408  
PHONE: 800-772-7737 FAX: 800-255-7320

PRODUCT APPROVAL DRAWINGS  
PW257 IMPACT-RESISTANT  
CURTAIN WALL SYSTEM  
PROTOCOLS: TAS 201-202-203

INDEX TO DRAWINGS AND NOTES

ELIZABETH A. BROADWAY  
PROFESSIONAL ENGINEER  
FLORIDA REGISTRATION NO. 38568

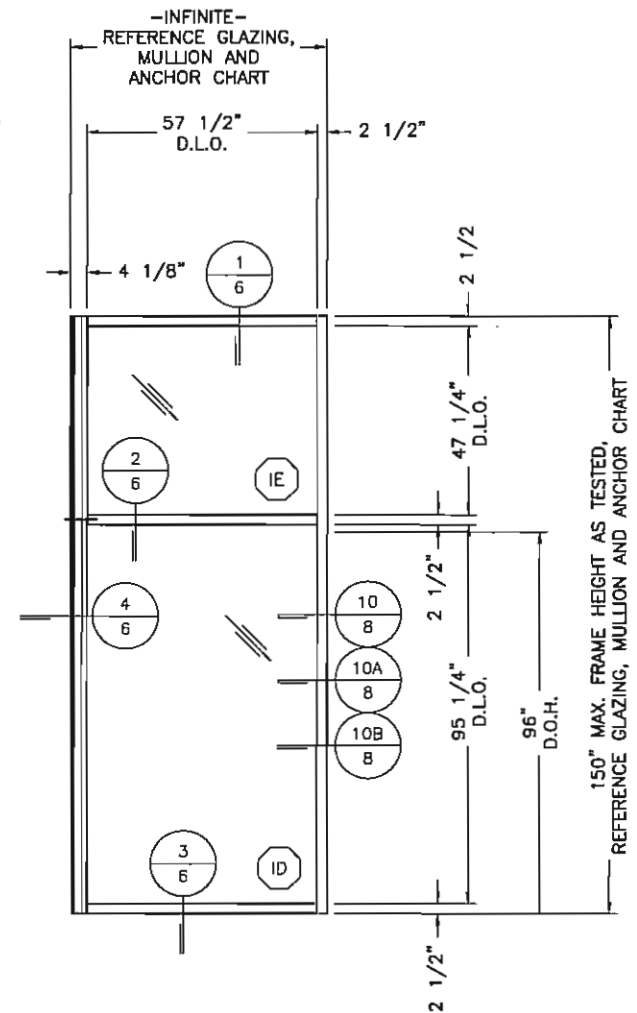
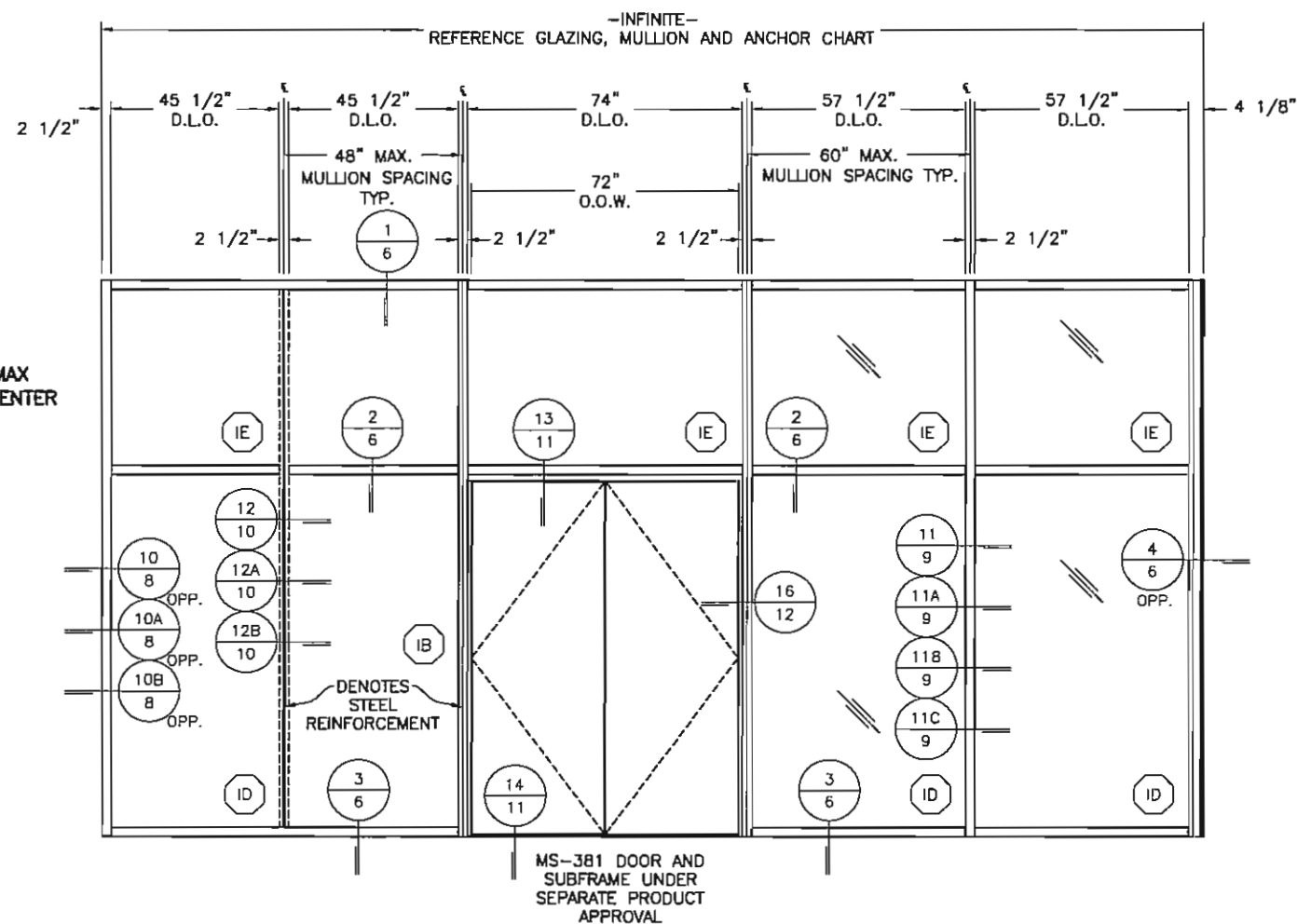
B BROADWAY ENGINEERING, P.A.

CIVIL, MECHANICAL, STRUCTURAL AND BUILDING DESIGN  
See Us At [www.Broadway-Eng.com](http://www.Broadway-Eng.com)

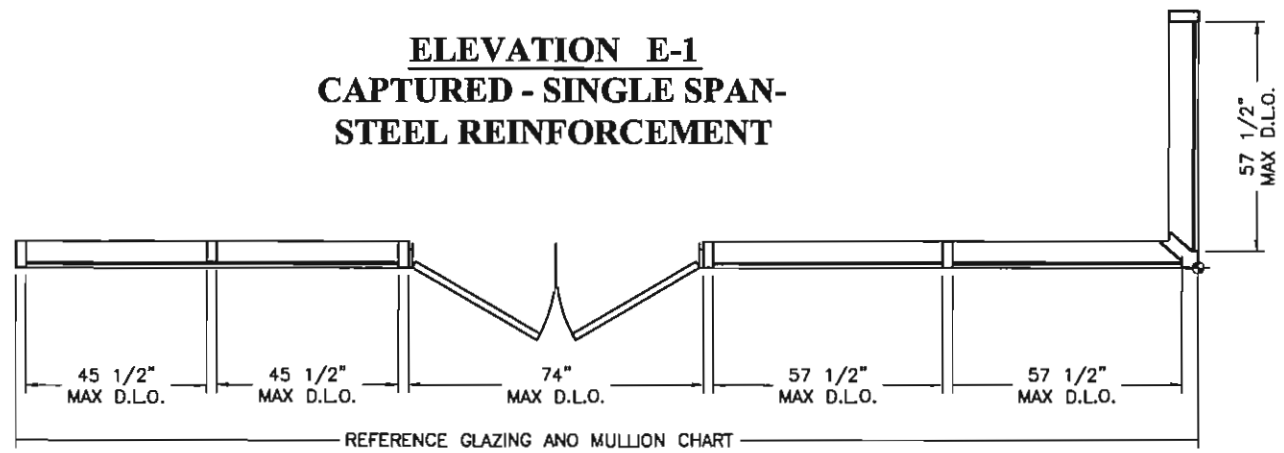
1335 W. Cass Street  
Tampa, Florida 33606 813-251-9244  
Fax 813-251-9330 Bus. Email: [Info@Broadway-Eng.Com](mailto:Info@Broadway-Eng.Com)  
Cadd. Email: [DGorr@Broadway-Eng.Com](mailto:DGorr@Broadway-Eng.Com)  
BE-4435 Certificate of Authorization No. 4599

DATE			7/8/15
DRAWN	CHECKED	APPROVED	
MLL	DCW	EAB	
PROJECT NO.			
DRAWING NO.			
PW257_02			
DRAWINGS FOR FLORIDA PRODUCT APPROVAL			
SHEET			1 OF 23

B.G. MULLIONS MAX SPACING 48" ON CENTER



**ELEVATION E-1  
CAPTURED - SINGLE SPAN-  
STEEL REINFORCEMENT**



ALL GLAZING MATERIALS MUST MEET ASTM E1300-04. ALL OUTBOARD LITES OF GLASS SHALL BE TEMPERED AS REQUIRED BY CODE.

1. REFERENCE GLAZING CHART ON PAGE 4 OF 23.
2. REFERENCE MULLION CHART ON PAGE 5 OF 23.
3. REFERENCE ANCHOR CHART ON PAGE 18 OF 23.

ELIZABETH A. BROADWAY  
No. 38558  
ELIZABETH A. BROADWAY  
PROFESSIONAL ENGINEER  
FLORIDA REGISTRATION NO. 38558

**BROADWAY ENGINEERING, P.A.**  
CIVIL, MECHANICAL, STRUCTURAL AND BUILDING DESIGN  
See Us At [www.Broadway-Eng.Com](http://www.Broadway-Eng.Com)  
1335 W. Cass Street  
Tampa, Florida 33606 813-251-9244  
Fax 813-251-9330 Bus. Email: [Info@Broadway-Eng.Com](mailto:Info@Broadway-Eng.Com)  
Cadd. Email: [DGorr@Broadway-Eng.Com](mailto:DGorr@Broadway-Eng.Com)  
BE-4435 Certificate of Authorization No. 4599

DRAWINGS FOR FLORIDA  
PRODUCT APPROVAL

REV	BY	DATE	DESCRIPTION

**Coral**  
Architectural Products  
3010 RICE MIKE ROAD, TUSCALOOSA, AL 35406  
PHONE: 800-772-7737 FAX: 800-255-7320

PRODUCT APPROVAL DRAWINGS  
PW257 IMPACT-RESISTANT  
CURTAIN WALL SYSTEM  
PROTOCOLS: TAS 201-202-203

FRAMING ELEVATION

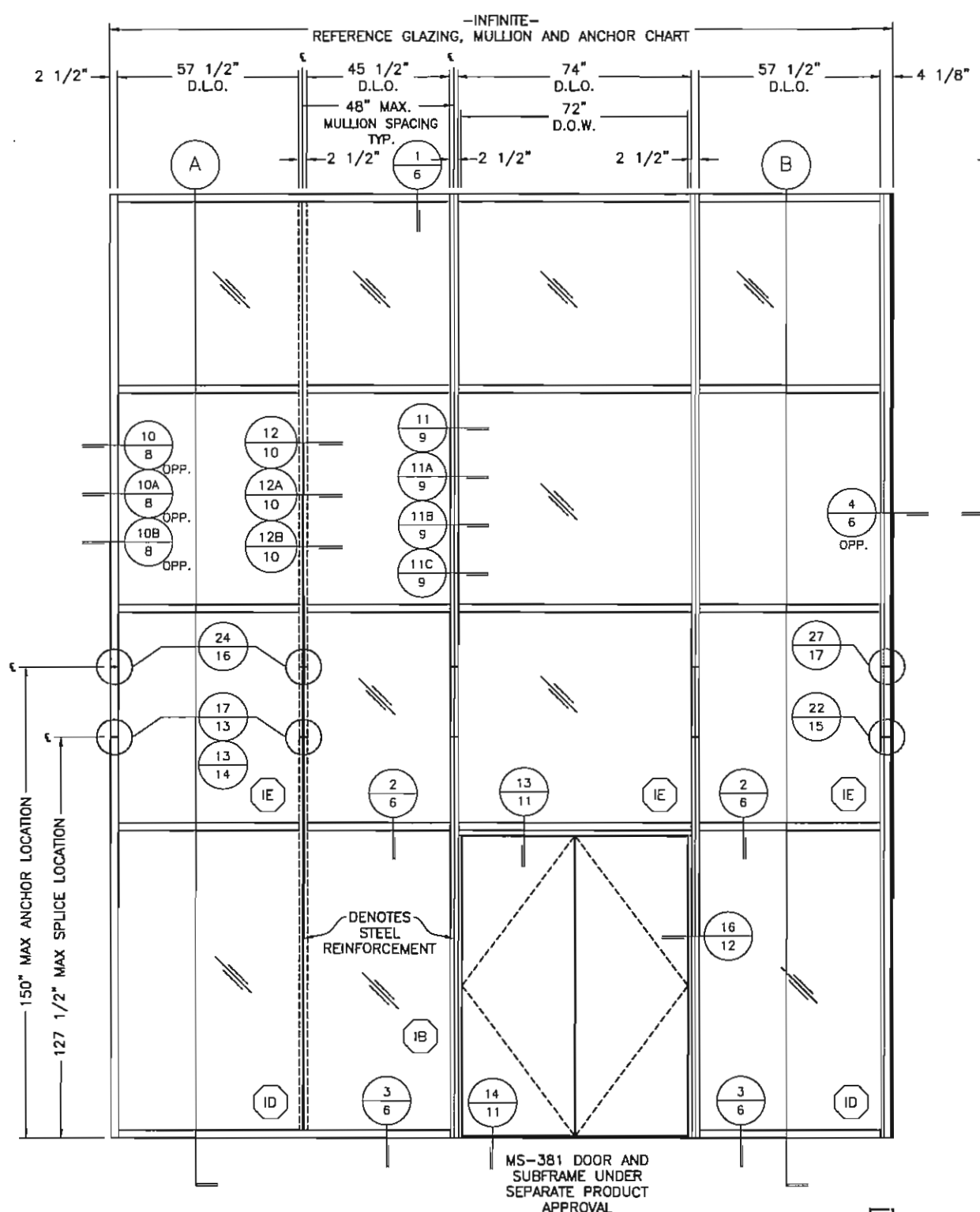
DATE 7/8/15

DRAWN MLL CHECKED WS APPROVED EAB

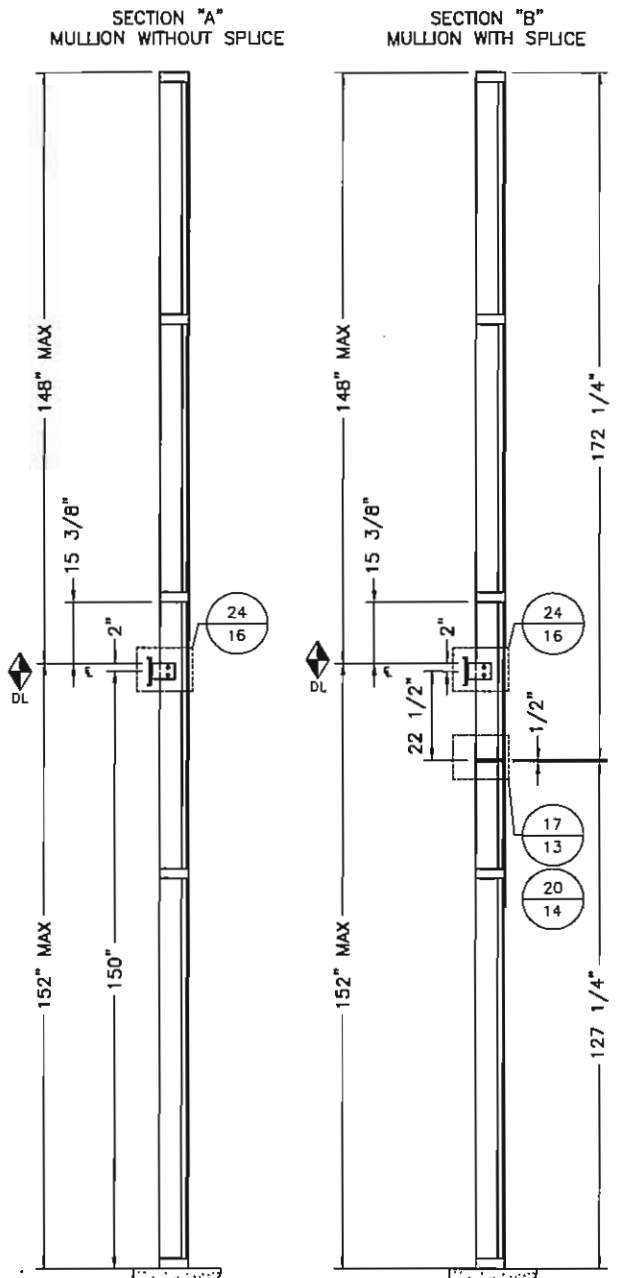
PROJECT NO.

DRAWING NO. PW257\_02

SHEET 2 OF 23

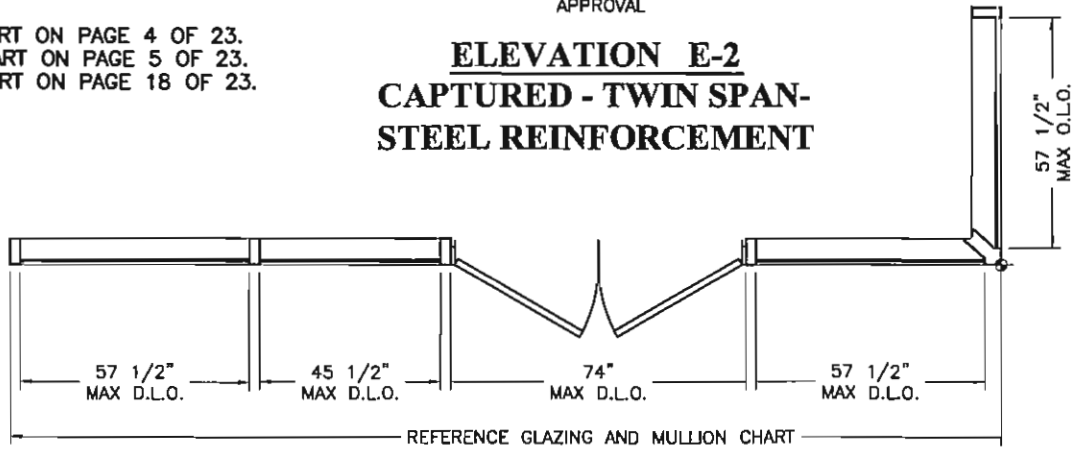


NOTE: MULLIONS ARE TESTED TO 150" MAX SPACING BETWEEN ANCHOR LOCATIONS.



1. REFERENCE GLAZING CHART ON PAGE 4 OF 23.
2. REFERENCE MULLION CHART ON PAGE 5 OF 23.
3. REFERENCE ANCHOR CHART ON PAGE 18 OF 23.

**ELEVATION E-2**  
CAPTURED - TWIN SPAN-  
STEEL REINFORCEMENT



ALL GLAZING MATERIALS MUST MEET ASTM E1300-04. ALL OUTBOARD LITES OF GLASS SHALL BE TEMPERED AS REQUIRED BY CODE.

BETH A. BROADWAY  
LICENSE

No. E-38558

ELIZABETH A. BROADWAY  
PROFESSIONAL ENGINEER  
FLORIDA REGISTRATION NO. 98558

**BROADWAY ENGINEERING, P.A.**  
CIVIL, MECHANICAL, STRUCTURAL AND BUILDING DESIGN  
See Us At [www.Broadway-Eng.Com](http://www.Broadway-Eng.Com)

1335 W. Cass Street  
Tampa, Florida 33606 813-251-9244

Fax 813-251-9330 Bus. Email: [Info@Broadway-Eng.Com](mailto:Info@Broadway-Eng.Com)  
Cadd. Email: [DCorr@Broadway-Eng.Com](mailto:DCorr@Broadway-Eng.Com)  
Certificate of Authorization No. 4599

BE-4435

DRAWINGS FOR FLORIDA  
PRODUCT APPROVAL

<b>PRODUCT APPROVAL DRAWINGS</b>		
<b>PW257 IMPACT-RESISTANT CURTAIN WALL SYSTEM</b>		
<b>PROTOCOLS: TAS 201-202-203</b>		
<b>FRAMING ELEVATION</b>		
DATE	7/8/15	
DRAWN	CHECKED	APPROVED
ALL	WS	EAB
PROJECT NO.		
DRAWING NO.		
PW257_02		
SHEET		
3 OF 23		

*Coral*

Architectural Products

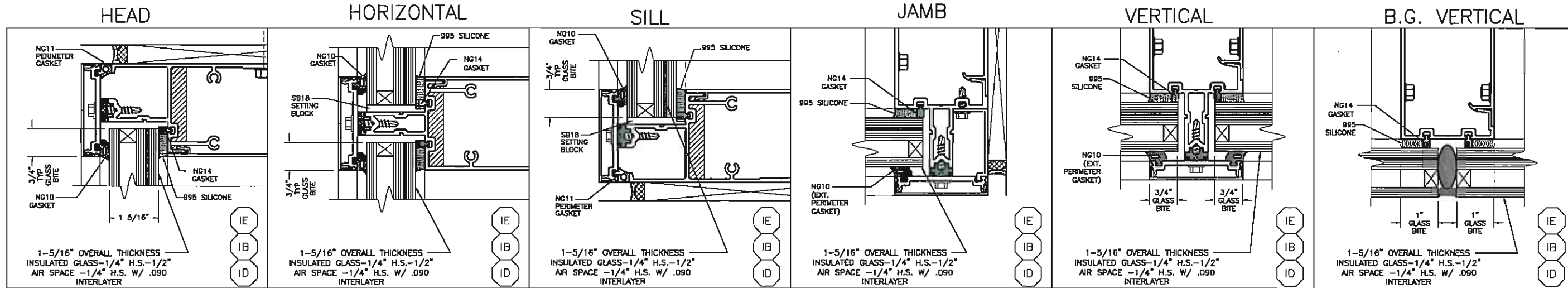
3010 RICE WINE ROAD, TUSCALOOSA, AL 35405  
PHONE: 800-772-7737 FAX: 800-255-1320



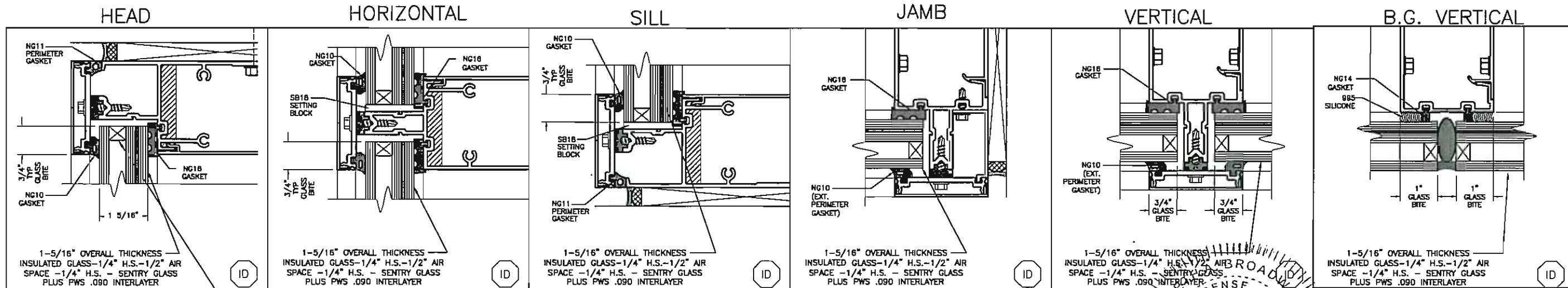
# GLAZING SCHEDULE

GLASS MARK	GLASS DESCRIPTION	MANUFACTURER	MAXIMUM D.L.O. SIZE (INCHES)	SQUARE FEET	MAXIMUM DESIGN PRESSURE (PSF)
IE	1-5/16" INSULATED -1/4" H.S. -1/2" AIR SPACE -1/4" H.S. - DUPONT BUTACITE .090 PVB INTERLAYER	DUPONT	45-1/2" X 96"	30.3	± 80
IB	MOMO1-5/16" INSULATED -1/4" H.S. -1/2" AIR SPACE -1/4" H.S. -.090 SAFLEX PVB INTERLAYER -1/4" H.S.	SOLUTIA	45-1/2" X 96"	30.3	± 65
ID	1-5/16" INSULATED -1/4" H.S. -1/2" AIR SPACE -1/4" H.S. -SENTRY GLASS PLUS PWS .090 -1/4" H.S. *SEE NOTE BELOW	DUPONT	57-1/2" X 96"	38.3	± 80

## WET GLAZED



## DRY GLAZED



SPACER:  
1/2" AIR SPACE WITH AN ALUMINUM BOX SPACER AROUND THE PERIMETER OF GLASS

\* PRIMARY SEALANT:  
TYPE PIB-29 MANUFACTURED BY ADCO

SECONDARY SEALANT:  
TYPE GE-3723 A&B (TWO PART) SILICONE MANUFACTURED BY GE

ALL GLAZING MATERIALS MUST MEET ASTM E1300-04. ALL OUTBOARD LITES OF GLASS SHALL BE TEMPERED AS REQUIRED BY CODE.

No. E-38558  
*Elizabeth B...*  
ELIZABETH A. BROADWAY  
PROFESSIONAL ENGINEER  
FLORIDA REGISTRATION NO. 38558

**B BROADWAY ENGINEERING, P.A.**  
CIVIL, MECHANICAL, STRUCTURAL AND BUILDING DESIGN  
See Us At [www.Broadway-Eng.Com](http://www.Broadway-Eng.Com)  
1335 W. Cass Street  
Tampa, Florida 33606 813-251-9244  
Fax 813-251-9330 Bus. Email: [Info@Broadway-Eng.Com](mailto:Info@Broadway-Eng.Com)  
BE-4435 Cadd. Email: [DGorr@Broadway-Eng.Com](mailto:DGorr@Broadway-Eng.Com)  
Certificate of Authorization No. 4599

DRAWINGS FOR FLORIDA  
PRODUCT APPROVAL

REV	BY	DATE	DESCRIPTION

**Coral**  
Architectural Products  
3010 RICE MINE ROAD, TUSCALOOSA, AL 35406  
PHONE: 800-772-7737 FAX: 800-255-7320

PRODUCT APPROVAL DRAWINGS  
PW257 IMPACT-RESISTANT  
CURTAIN WALL SYSTEM  
PROTOCOLS: TAS 201-202-203

DATE 7/8/15		
DRAWN MLL	CHECKED WS	APPROVED EAB
PROJECT NO.		
DRAWING NO. PW257_02		
SHEET 4 OF 23		

**Options and Limitations for PW 257 Curtain Wall Systems For Use in High Velocity Hurricane Zones (HVHZ)**

**PW 257 Insulated Impact Resistant Curtain Wall Captured**

Design Pressure P.S.F	Intermediate Vertical Mullion WITHOUT STEEL	Intermediate Vertical Mullion With Steel SR150	Intermediate Vertical Mullion With Steel SR150 with 3-3/4" x 1/2" Bar welded	Intermediate Vertical Mullion With Steel SR150 with 3-3/4" x 3/4" Bar welded	Wall Jamb Mullion With Steel SR150 - Without Anchors at Horizontals	Wall Jamb Mullion With Steel SR150 with 3-3/4" x 1/2" Bar welded - Without Anchors at Horizontals	Wall Jamb Mullion WITHOUT STEEL - Must Be Anchored at Horizontals	Maximum Mullion	Maximum Mullion Anchor Point	Maximum Mullion Spacing Center to Center ( ) see notes below	Maximum Glass Size Daylite Opening	Square Feet	Qualified Glass Types
+65/-65	PW650/202						PW650/202	108"		48"	45 1/2" x 84"	26.5	IE-IB-ID
+80/-80		PW650/202			PW650/202		PW650/202	144"	150"	60"	57 1/2" x 96"	38.3	ID
+80/-80			PW650/202			PW650/202	PW650/202	150"	150"	60"	57 1/2" x 96"	38.3	ID
+80/-80				PW650/202			PW650/202	150"	150"	76 1/2" (1)	72" x 47 1/4"	23.6	IE-IB-ID
+80/-80	(3)		Corner PW 208/209 /656 and SR504					150"	150"	60"	57 1/2" x 96"	38.3	ID

**PW 257 Insulated Impact Resistant Curtain Wall Butt Glazed**

+65/-65	PW151/202						PW650/202	108"		48"	45 1/2" x 96"	30.5	ID
+80/-80		PW151/202			PW650/202		PW650/202	144"	150"	48"	45 1/2" x 96"	30.5	ID
+80/-80			PW151/202			PW650/202	PW650/202	150"	150"	48"	45 1/2" x 96"	30.5	ID
+80/-80	(2)	Corner Captured Only PW208/209/656 and SR504						150"	150"	48"	45 1/2" x 96"	30.5	ID

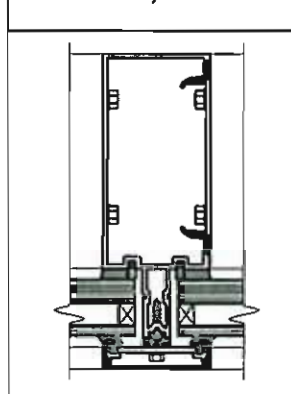
**PW 257 Insulated Impact Resistant Curtain Wall Dry Glazed**

+65/-65	PS650/202						PW650/202	108"		48"	45 1/2" x 84"	26.5	ID
+70/-80		PW650/202			PW650/202		PW650/202	144"	150"	60"	57 1/2" x 96"	38.3	ID
+70/-80			PW650/202			PW650/202	PW650/202	150"	150"	60"	57 1/2" x 96"	38.3	ID
+70/-80				PW650/202			PW650/202	150"	150"	76 1/2" (1)	72" x 47 1/4"	23.6	ID

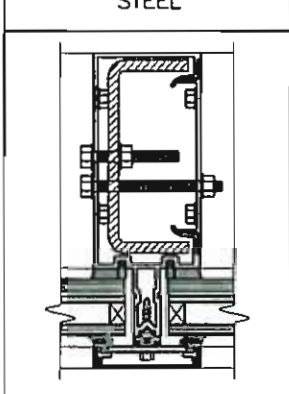
**Notes**

(1)	Based on Opening for Door and frame. Horizontals must be used at 48" intervals
(2)	Captured Corner can be used with Butt Glazed System, Mullion Spacing cannot exceed 48" on center
(3)	Corner Assembly consists of PW 208/209/654 /PW658/PW210 and SR 504 Steel

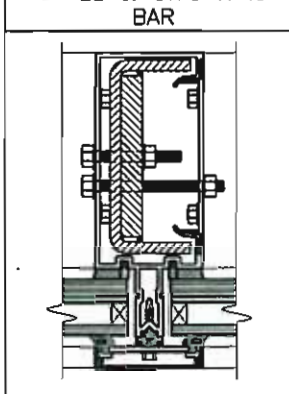
PW650 W/O STEEL



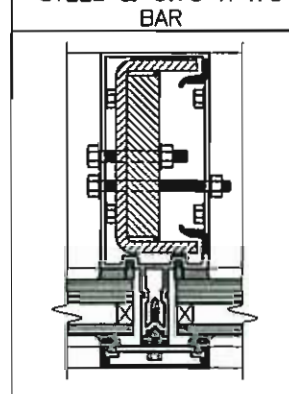
PW650 W/ SR150 STEEL



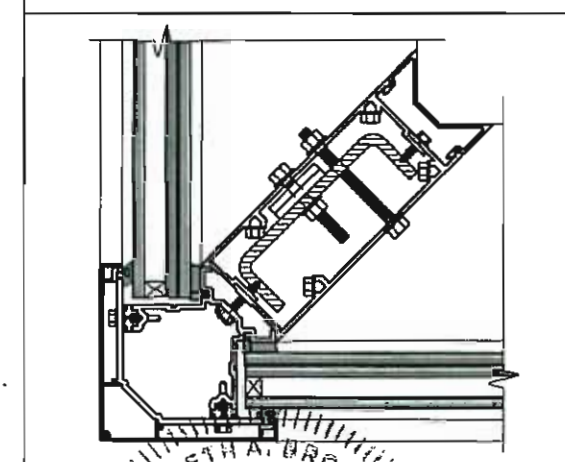
PW650 W/ SR150 STEEL & 3.75 X .5 BAR



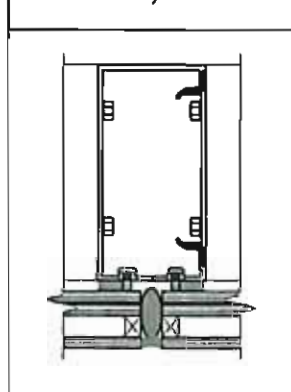
PW650 W/ SR150 STEEL & 3.75 X .75 BAR



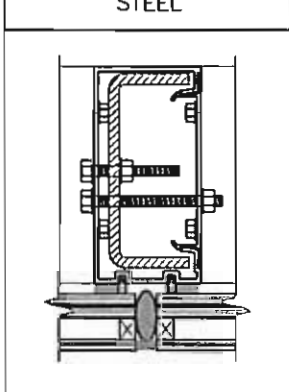
PW208/PW209 W/ SR504



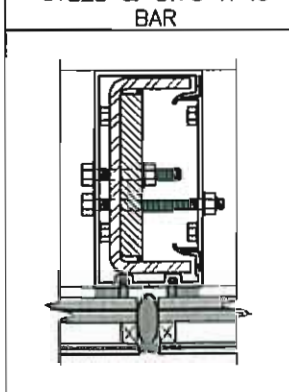
PW151 W/O STEEL



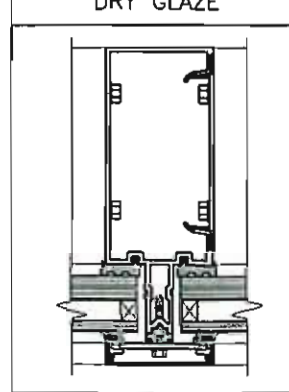
PW151 W/ SR150 STEEL



PW151 W/ SR150 STEEL & 3.75 X .5 BAR



PW650 W/O STEEL DRY GLAZE



ELIZABETH A. BROADWAY  
 PROFESSIONAL ENGINEER  
 FLORIDA REGISTRATION NO. 38558

**BROADWAY ENGINEERING, P.A.**  
 CIVIL, MECHANICAL, STRUCTURAL AND BUILDING DESIGN  
 See Us At [www.Broadway-Eng.Com](http://www.Broadway-Eng.Com)  
 1335 W. Cass Street  
 Tampa, Florida 33606 813-251-9244  
 Fax 813-251-9330 Bus. Email: [Info@Broadway-Eng.Com](mailto:Info@Broadway-Eng.Com)  
 Cadd. Email: [DGorr@Broadway-Eng.Com](mailto:DGorr@Broadway-Eng.Com)  
 BE-4435 Certificate of Authorization No. 4599

DRAWINGS FOR FLORIDA  
PRODUCT APPROVAL

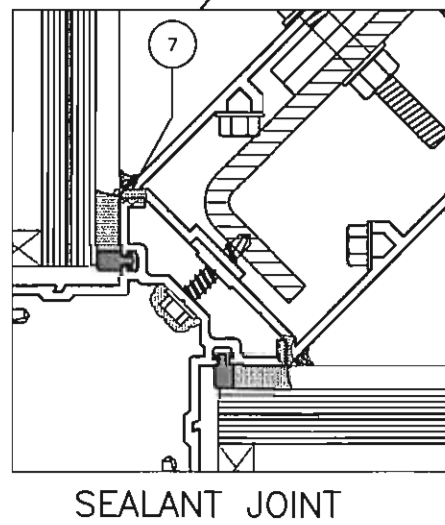
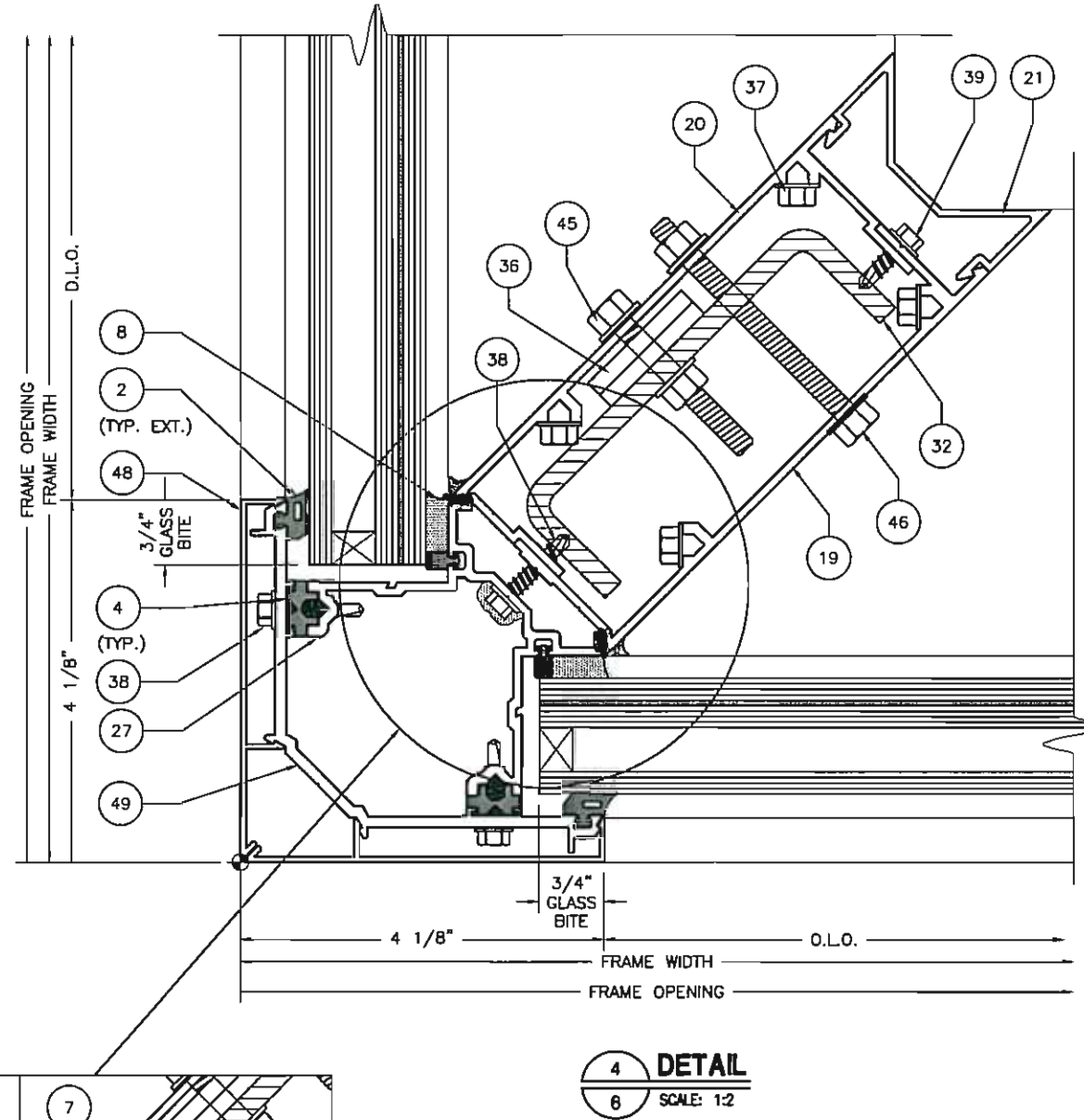
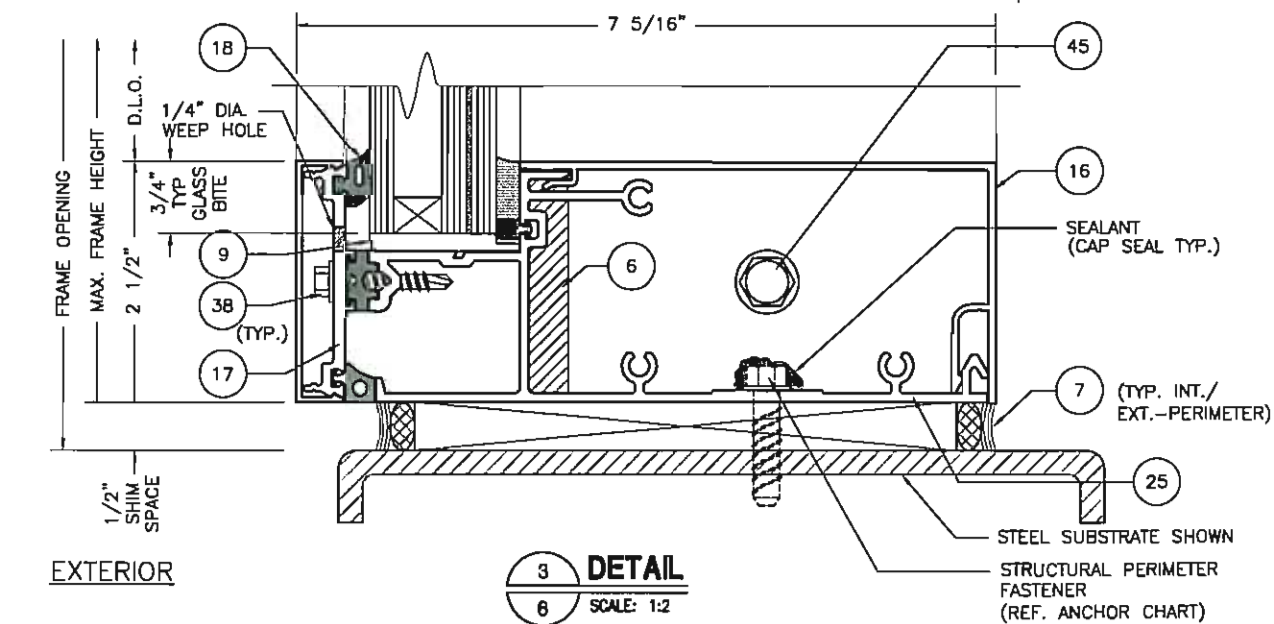
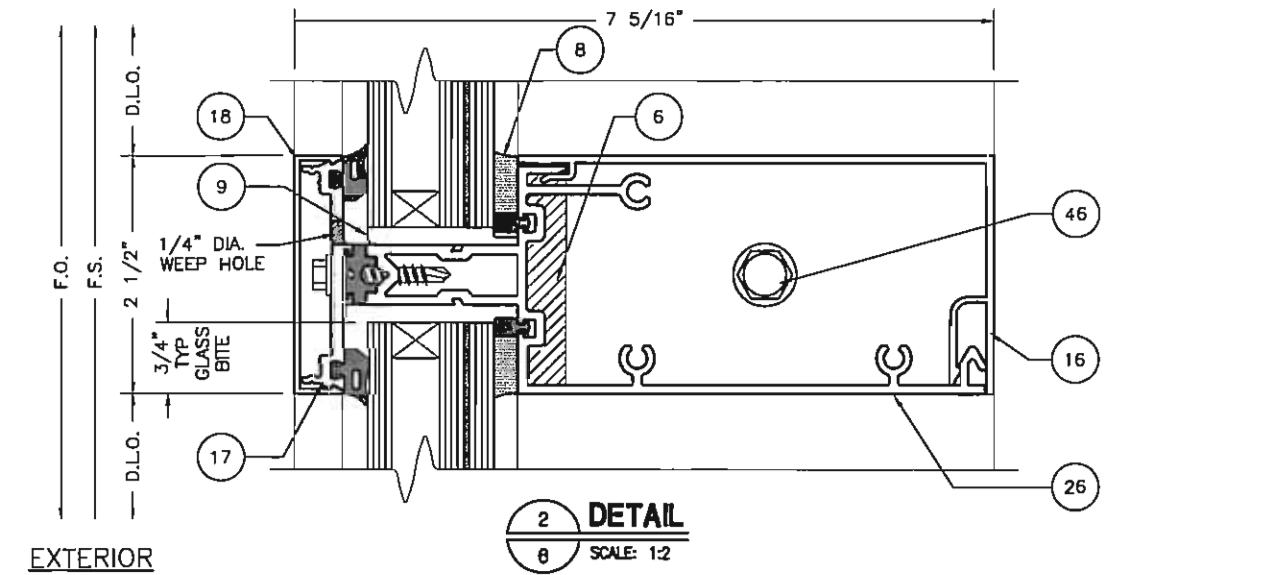
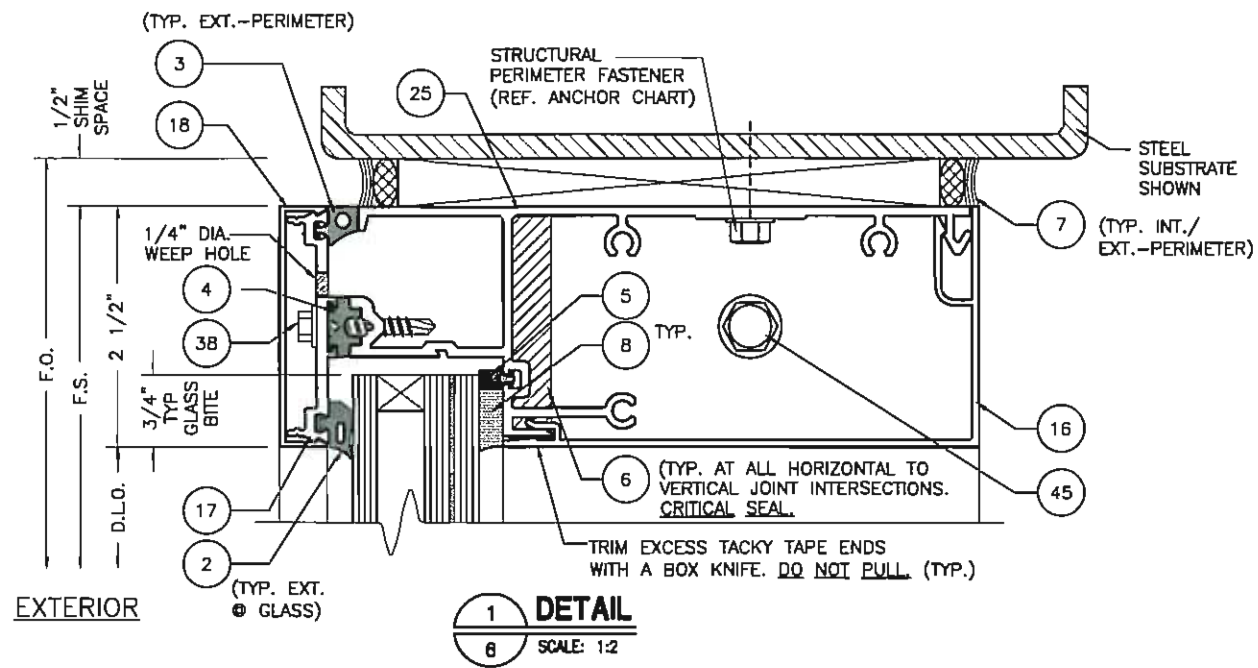
REV	BY	DATE	DESCRIPTION

Architectural Products  
 3010 RICE MINE ROAD TUSCALOOSA, AL 35408  
 PHONE: 800-772-7737 FAX: 800-255-7320

PRODUCT APPROVAL DRAWINGS  
 PW257 IMPACT-RESISTANT  
 CURTAIN WALL SYSTEM  
 PROTOCOLS: TAS 201-202-203  
 MULLION CHART

DATE	7/8/15		
DRAWN	ALL	CHECKED	WS
APPROVED	EAB		
PROJECT NO.			
DRAWING NO.	PW257_02		
SHEET	5 OF 23		





ELIZABETH A. BROADWAY  
 No. E-38558  
 ELIZABETH A. BROADWAY  
 PROFESSIONAL ENGINEER  
 FLORIDA REGISTRATION NO. 58558

**B BROADWAY ENGINEERING, P.A.**  
 CIVIL, MECHANICAL, STRUCTURAL AND BUILDING DESIGN  
 See Us At [www.Broadway-Eng.Com](http://www.Broadway-Eng.Com)  
 1335 W. Cass Street  
 Tampa, Florida 33606 813-251-9244  
 Fax 813-251-9330 Bus. Email: [Info@Broadway-Eng.Com](mailto:Info@Broadway-Eng.Com)  
 Cadd. Email: [DGorr@Broadway-Eng.Com](mailto:DGorr@Broadway-Eng.Com)  
 BE-4435 Certificate of Authorization No. 4599

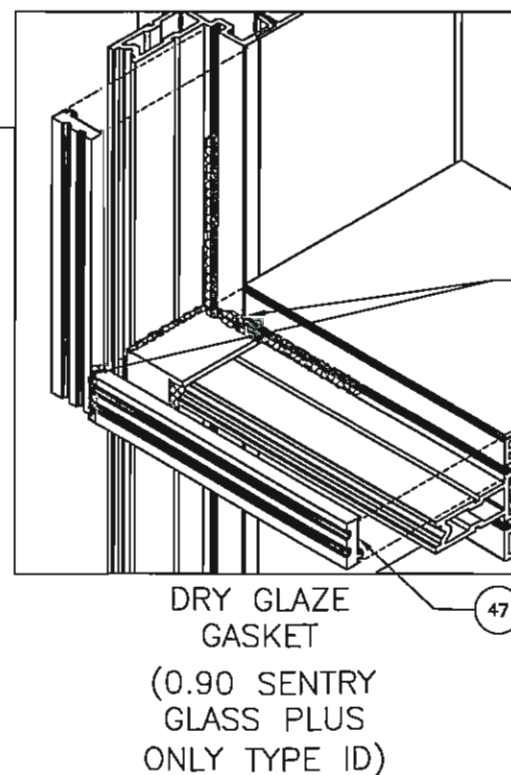
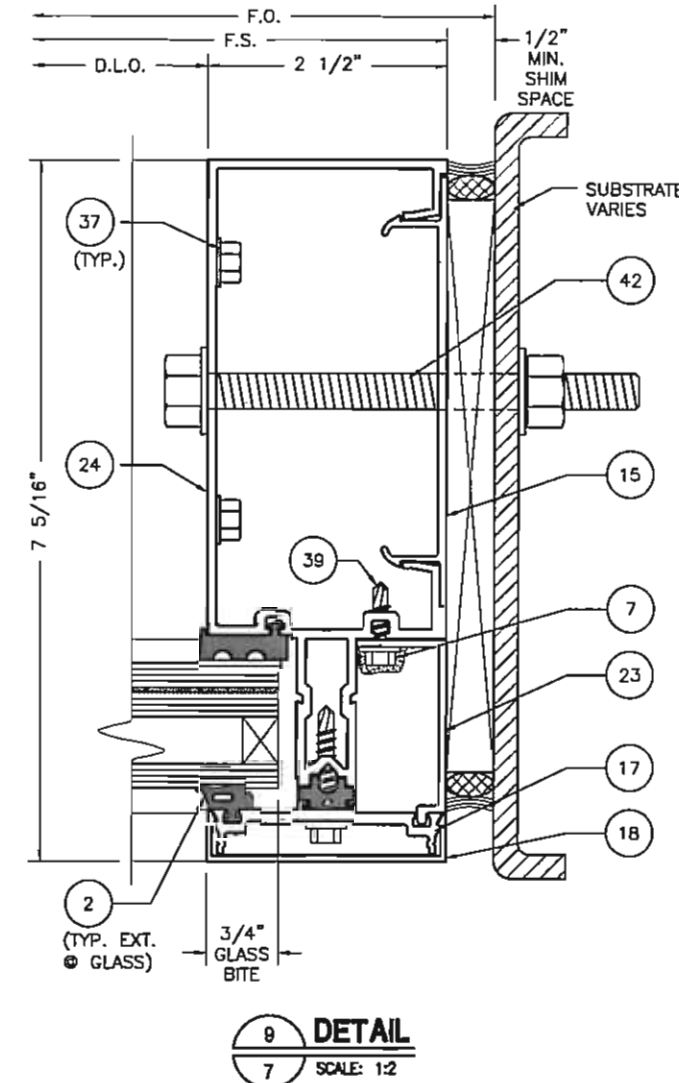
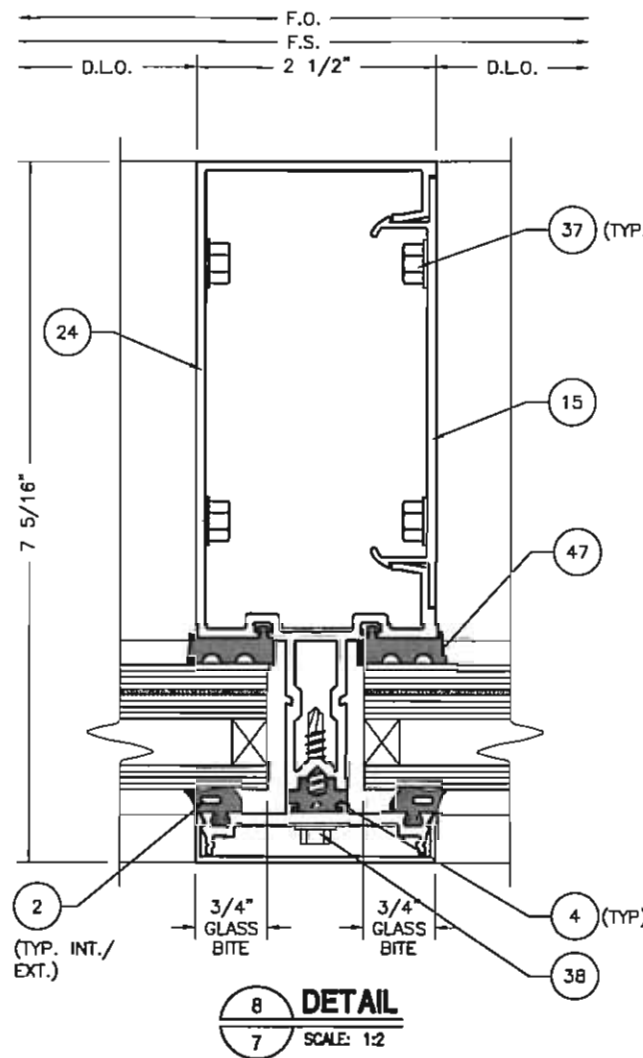
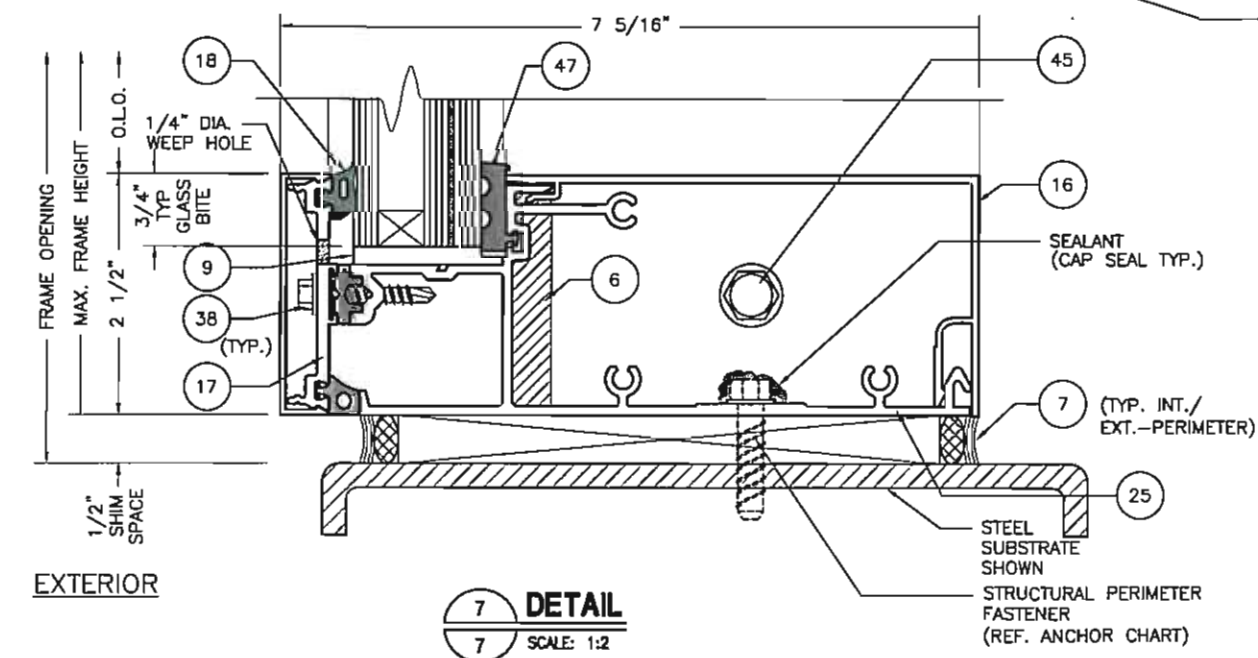
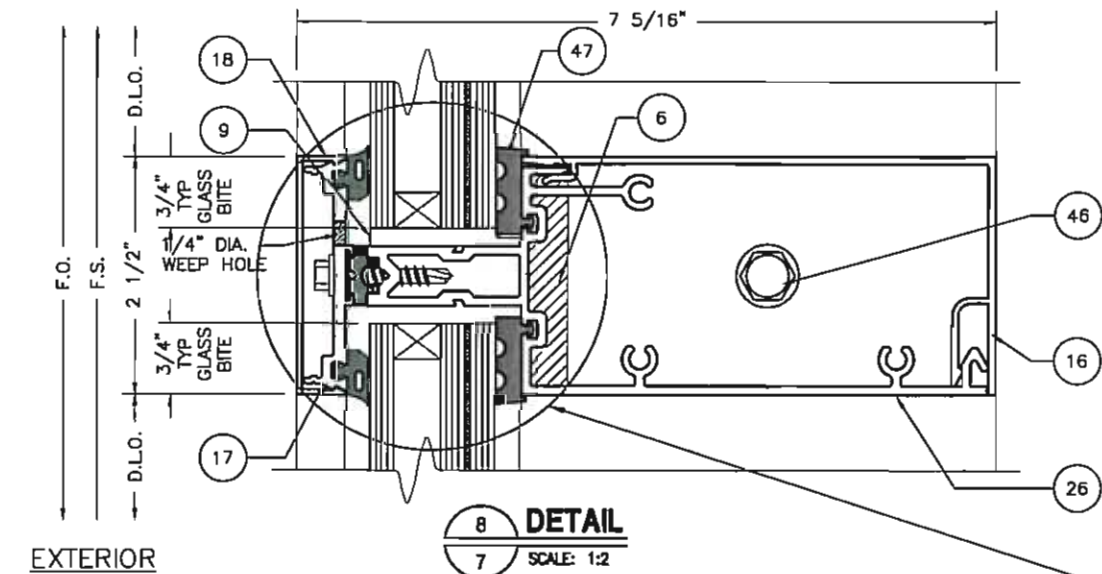
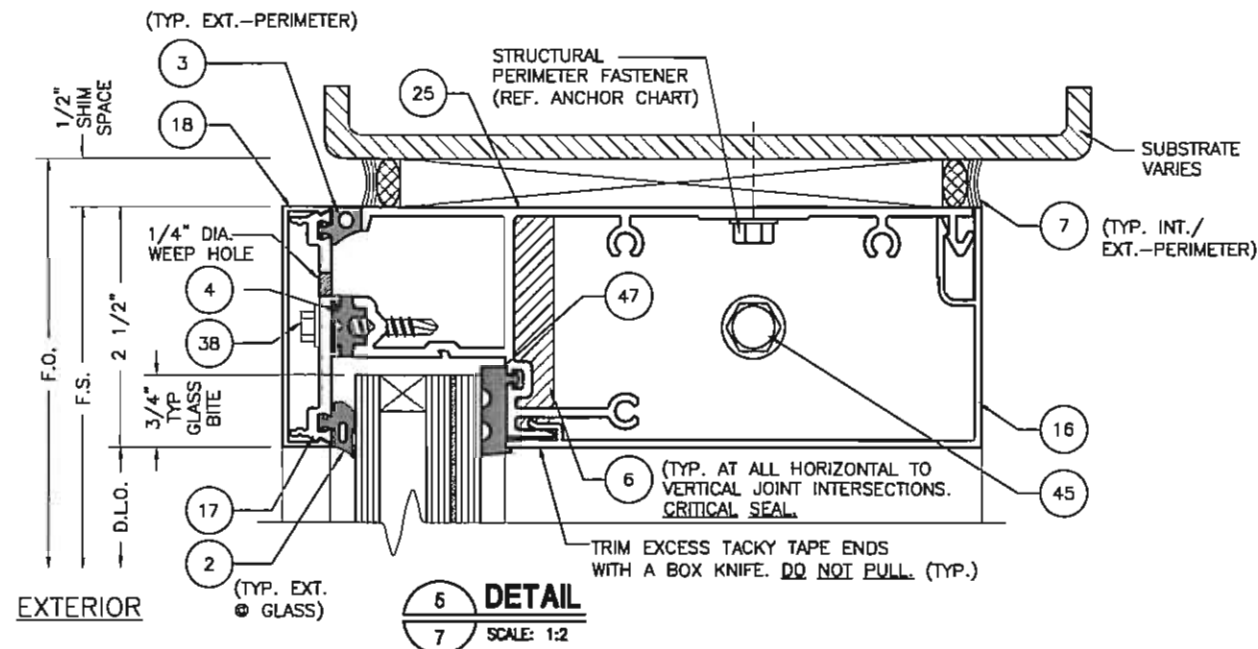
REV	BY	DATE	DESCRIPTION

**Coral**  
 Architectural Products  
 3010 RICE MINE ROAD TUSCALOOSA, AL 35408  
 PHONE: 800-72-7377 FAX: 800-255-7320

PRODUCT APPROVAL DRAWINGS  
 PW257 IMPACT-RESISTANT  
 CURTAIN WALL SYSTEM  
 PROTOCOLS: PA 201-202-203  
 FRAMING DETAILS - WET GLAZED

DATE	7/8/15	
DRAWN	CHECKED	APPROVED
MLL	WS	EAB
PROJECT NO.		
DRAWING NO.	PW257_02	
SHEET	6 OF 23	

DRAWINGS FOR FLORIDA  
 PRODUCT APPROVAL



ELIZABETH A. BROADWAY  
PROFESSIONAL ENGINEER  
FLORIDA REGISTRATION NO. 38553

**BROADWAY ENGINEERING, P.A.**  
CIVIL, MECHANICAL, STRUCTURAL AND BUILDING DESIGN  
See Us At [www.Broadway-Eng.Com](http://www.Broadway-Eng.Com)

1335 W. Cass Street  
Tampa, Florida 33606 813-251-9244  
Fax 813-251-9330 Bus. Email: [Info@Broadway-Eng.Com](mailto:Info@Broadway-Eng.Com)  
Cadd. Email: [DGorr@Broadway-Eng.Com](mailto:DGorr@Broadway-Eng.Com)  
BE-4435 Certificate of Authorization No. 4599

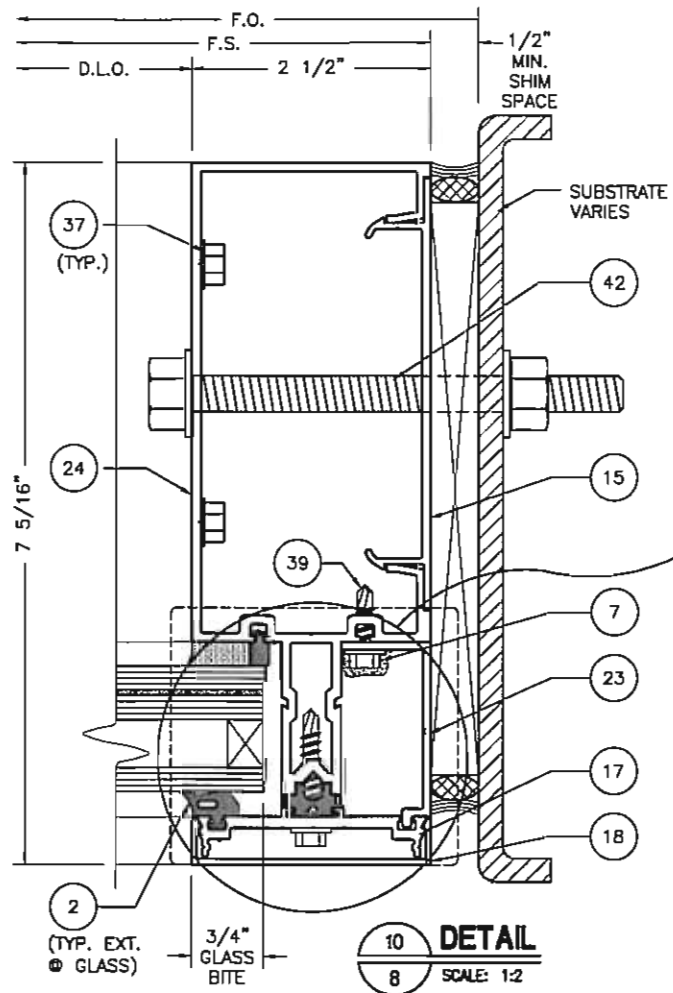
DATE	7/8/15
DRAWN	MLL
CHECKED	WS
APPROVED	EAB
PROJECT NO.	
DRAWING NO.	PW257_02
SHEET	7 OF 23

PRODUCT APPROVAL DRAWINGS  
PW257 IMPACT-RESISTANT  
CURTAIN WALL SYSTEM  
PROTOCOLS: TAS 201-202-203

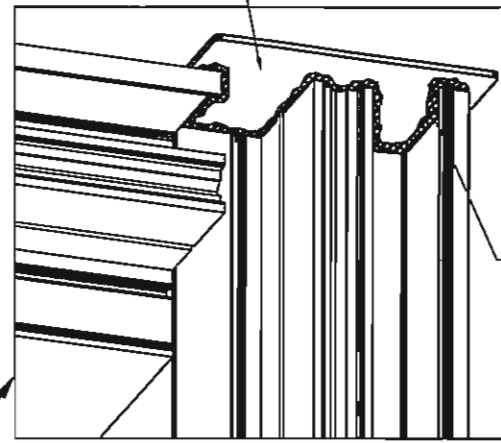
FRAMING DETAILS - DRY GLAZED

**Coral**  
Architectural Products  
3010 RICE MINE ROAD, TUSCALOOSA, AL 35408  
PHONE: 800-772-7737 FAX: 800-255-7320

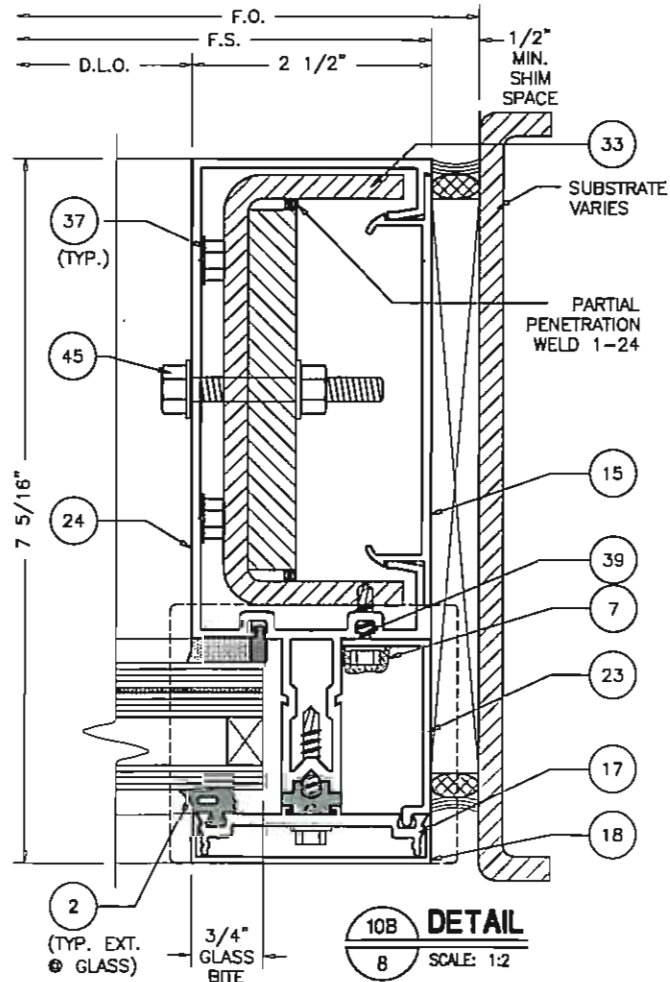
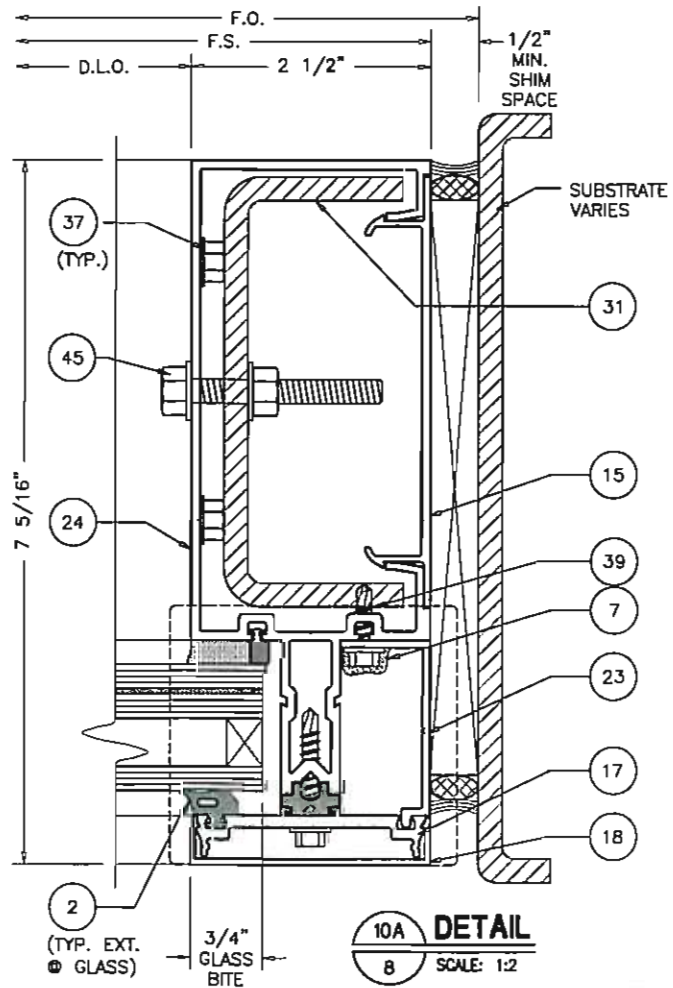
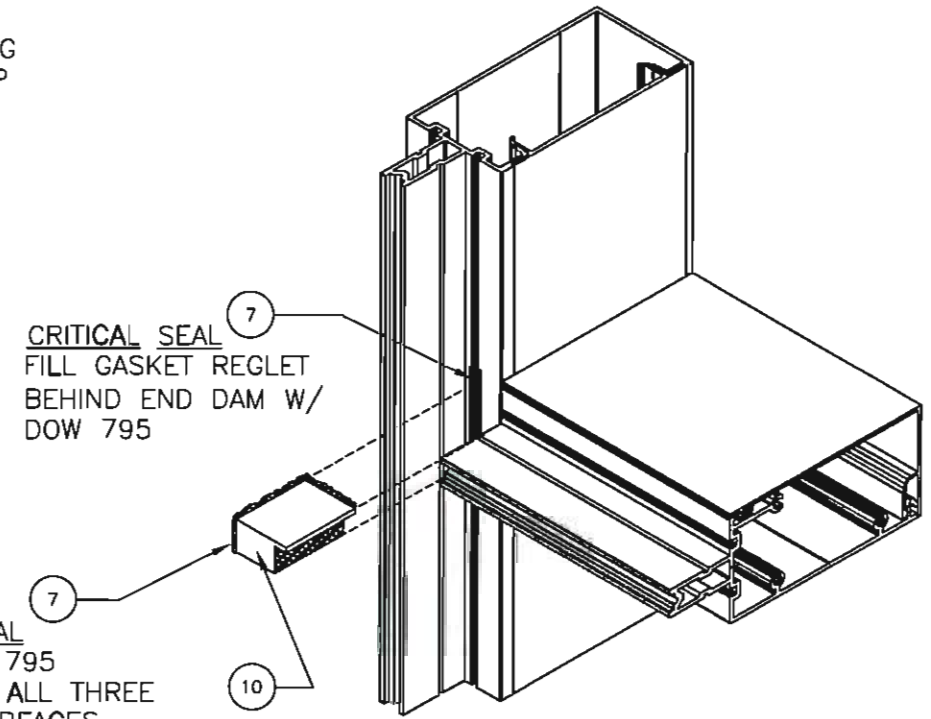




12 FIELD MODIFY @ JAMB IF REQUIRED



7 SEAL CONTACT SURFACE W/ DOW 795 BEFORE INSTALLING TOP AND BOTTOM CLOSURE CAP



ELIZABETH A. BROADWAY  
PROFESSIONAL ENGINEER  
FLORIDA REGISTRATION NO. 38558

**BROADWAY ENGINEERING, P.A.**  
CIVIL, MECHANICAL, STRUCTURAL AND BUILDING DESIGN  
See Us At [www.broadway-eng.com](http://www.broadway-eng.com)  
1335 W. Cass Street  
Tampa, Florida 33606 813-251-9244  
Fax 813-251-9330 Bus. Email: [Info@Broadway-Eng.Com](mailto:Info@Broadway-Eng.Com)  
BE-4435 Cadd. Email: [DGarr@Broadway-Eng.Com](mailto:DGarr@Broadway-Eng.Com)  
Certificate of Authorization No. 4599

REV	BY	DATE	DESCRIPTION

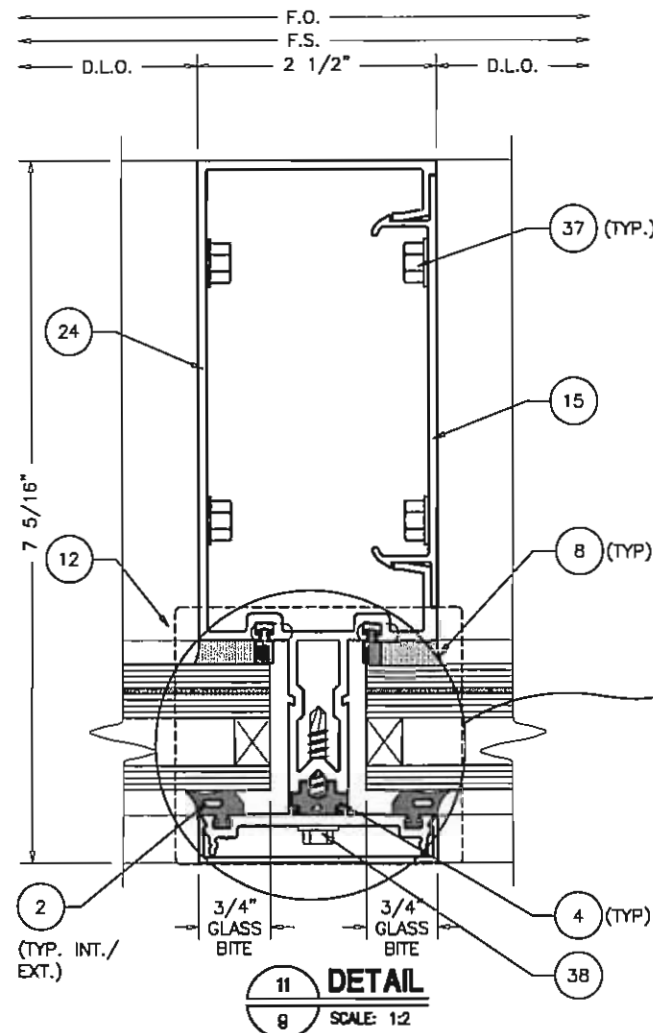
**Coral**  
Architectural Products  
3010 RICE MINE ROAD, TUSCALOOSA, AL 35406  
PHONE: 800-772-7737 FAX: 800-255-7320

PRODUCT APPROVAL DRAWINGS  
PW257 IMPACT-RESISTANT  
CURTAIN WALL SYSTEM  
PROTOCOLS: TAS 201-202-203  
FRAMING DETAILS

DATE	7/8/15	
DRAWN	CHECKED	APPROVED
ALL	WS	EAB
PROJECT NO.		
DRAWING NO.	PW257_02	
SHEET	8 OF 23	

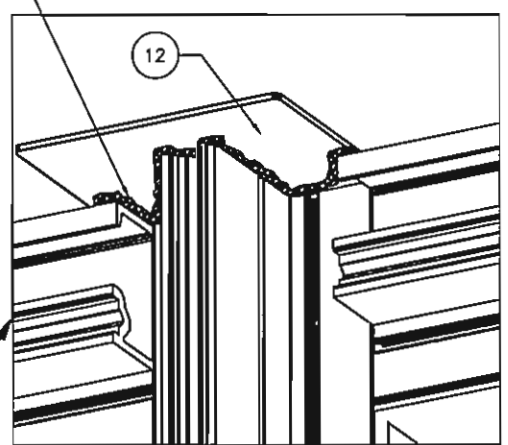
DRAWINGS FOR FLORIDA  
PRODUCT APPROVAL



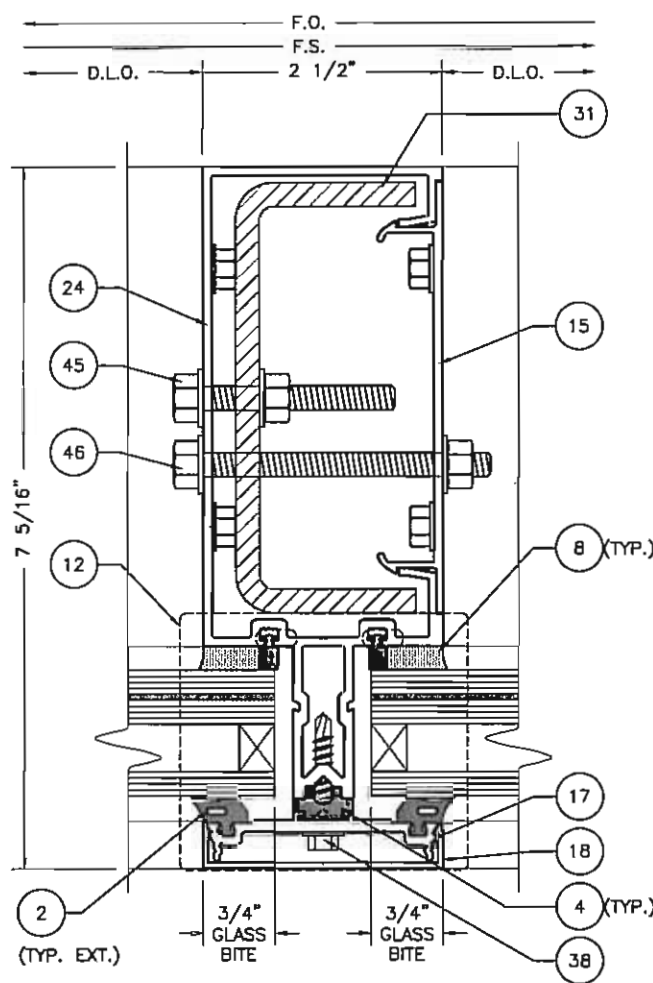


**11 DETAIL**  
SCALE: 1:2

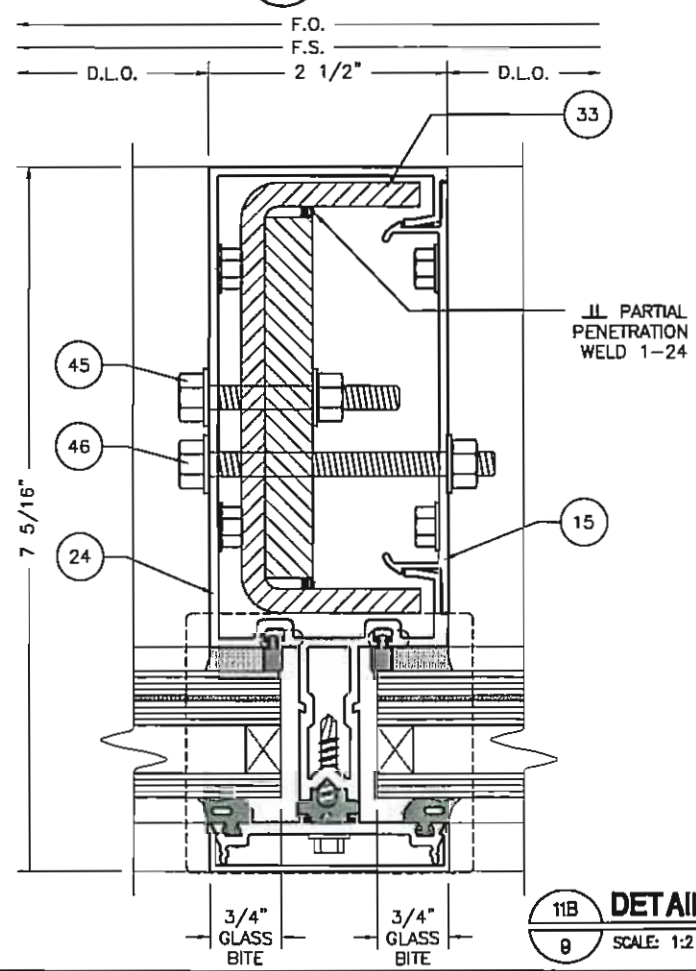
7 SEAL CONTACT SURFACE W/ DOW 795 BEFORE INSTALLING TOP AND BOTTOM CLOSURE CAP



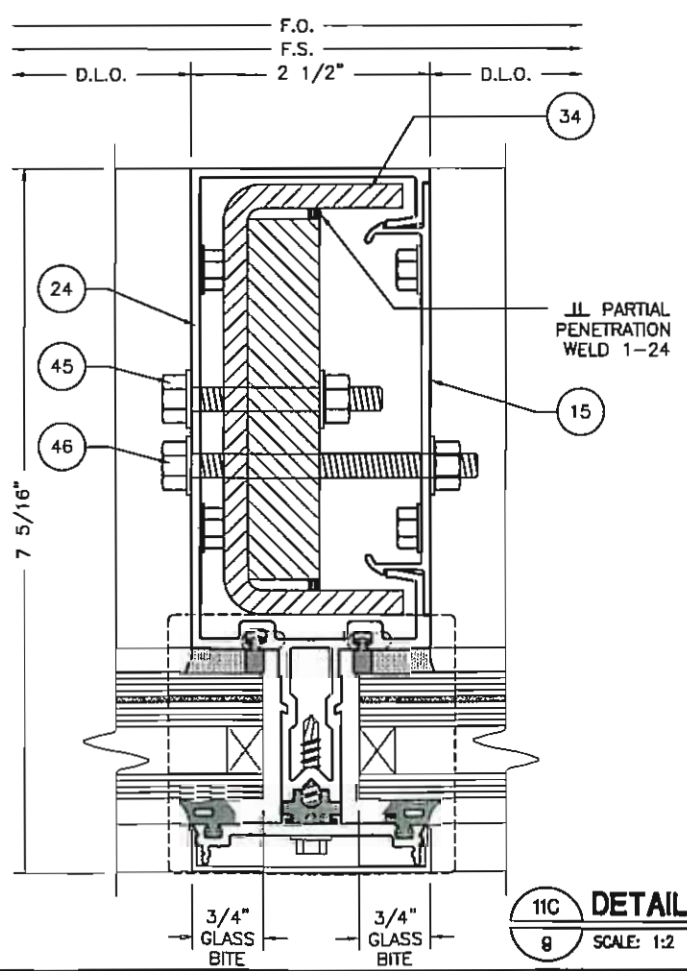
TOP SHOWN CLOSURE CAP (BOTTOM SIMILAR)



**11A DETAIL**  
SCALE: 1:2



**11B DETAIL**  
SCALE: 1:2



**11C DETAIL**  
SCALE: 1:2

ELIZABETH A. BROADWAY  
PROFESSIONAL ENGINEER  
FLORIDA REGISTRATION NO. 38555  
7/8/15

**BROADWAY ENGINEERING, P.A.**  
CIVIL, MECHANICAL, STRUCTURAL AND BUILDING DESIGN  
See Us At [www.Broadway-Eng.com](http://www.Broadway-Eng.com)  
1335 W. Cass Street  
Tampa, Florida 33606 813-251-9244  
Fax 813-251-9330 Bus. Email: [Info@Broadway-Eng.com](mailto:Info@Broadway-Eng.com)  
BE-4435 Cadd. Email: [DCorr@Broadway-Eng.com](mailto:DCorr@Broadway-Eng.com)  
Certificate of Authorization No. 4599

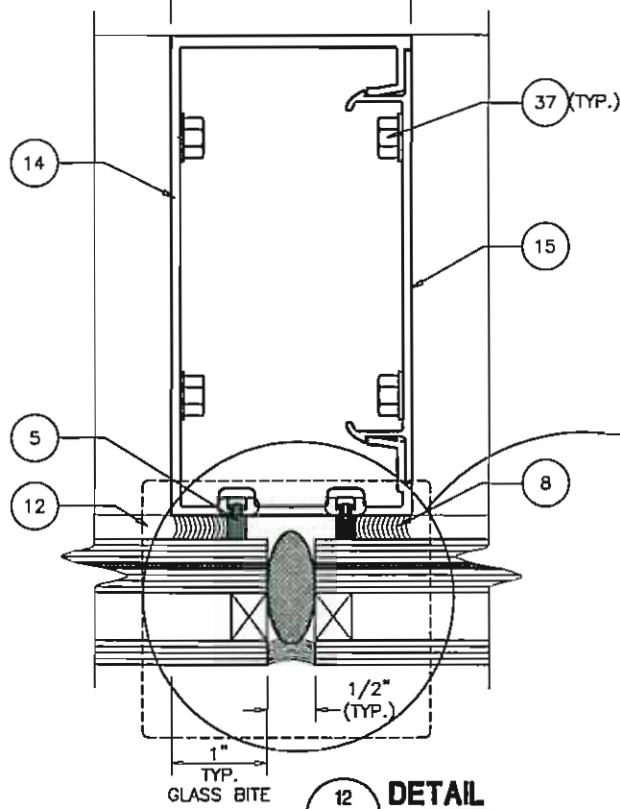
**Coral**  
Architectural Products  
3011 RICE MINE ROAD, TUSCALOOSA, AL 35408  
PHONE: 800-772-7737 FAX: 800-255-7320

PRODUCT APPROVAL DRAWINGS  
PW257 IMPACT-RESISTANT  
CURTAIN WALL SYSTEM  
PROTOCOLS: TAS 201-202-203  
FRAMING DETAILS

DATE	7/8/15	
DRAWN	CHECKED	APPROVED
ALL	WS	EAB
PROJECT NO.		
DRAWING NO.	PW257_02	
SHEET	9 OF 23	

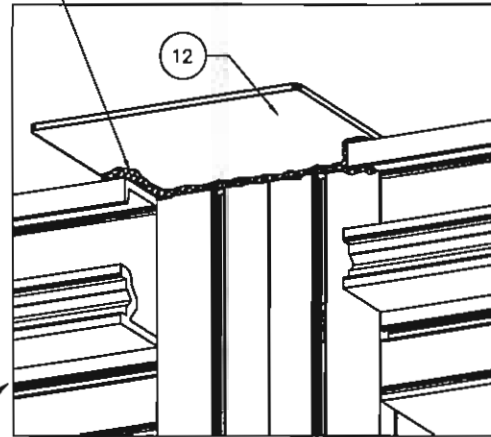
DRAWINGS FOR FLORIDA  
PRODUCT APPROVAL

FRAME OPENING  
 FRAME WIDTH  
 2 1/2"  
 D.L.O. D.L.O.

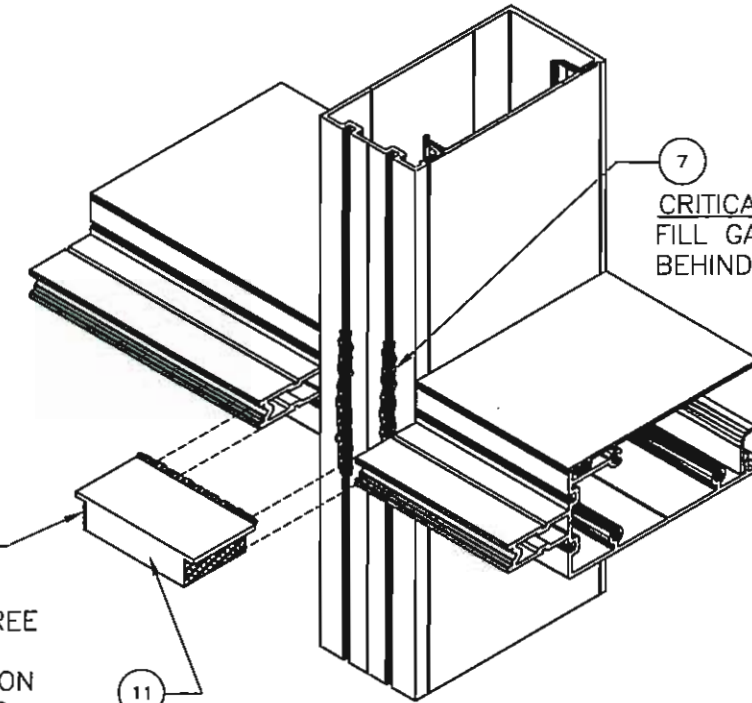


12 DETAIL  
 10 SCALE: 1:2

7 SEAL CONTACT SURFACE W/ DOW 795 BEFORE INSTALLING TOP AND BOTTOM CLOSURE CAP



TOP SHOWN CLOSURE CAP (BOTTOM SIMILAR)



CRITICAL SEAL 7  
 APPLY DOW 795 SEALANT TO ALL THREE CONTACT SURFACES PRIOR TO INSTALLATION AT HORIZONTALS AND SILL.

7 CRITICAL SEAL FILL GASKET REGLET BEHIND BRIDGE

REV	BY	DATE	DESCRIPTION

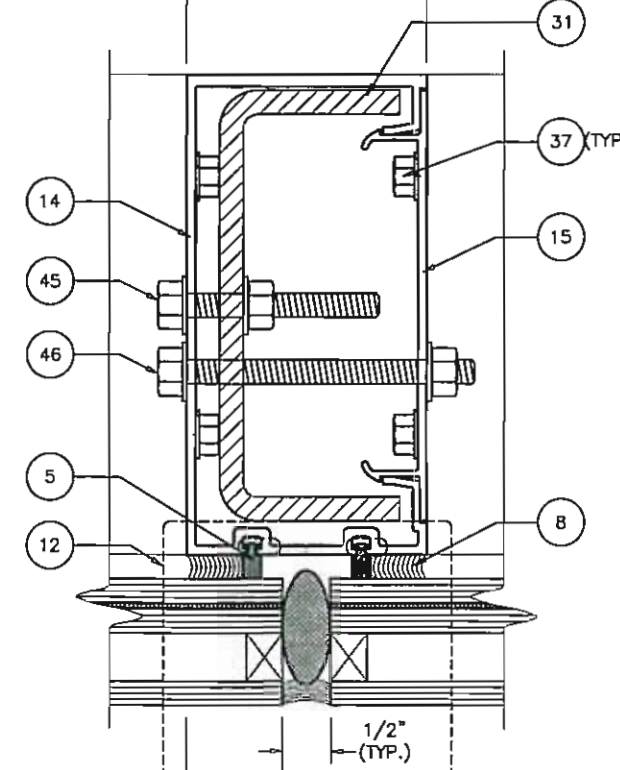
**Coral** Architectural Products  
 3010 RICE MINE ROAD, TUSCALOOSA, AL 35406  
 PHONE: 800-772-7737 FAX: 800-255-1320

PRODUCT APPROVAL DRAWINGS  
 PW257 IMPACT-RESISTANT CURTAIN WALL SYSTEM  
 PROTOCOLS: TAS 201-202-203  
 FRAMING DETAILS - BUTT GLAZED

DATE	7/8/15	
DRAWN	CHECKED	APPROVED
MLL	W/S	EAB
PROJECT NO.		
DRAWING NO.	PW257_02	
SHEET	10 OF 23	

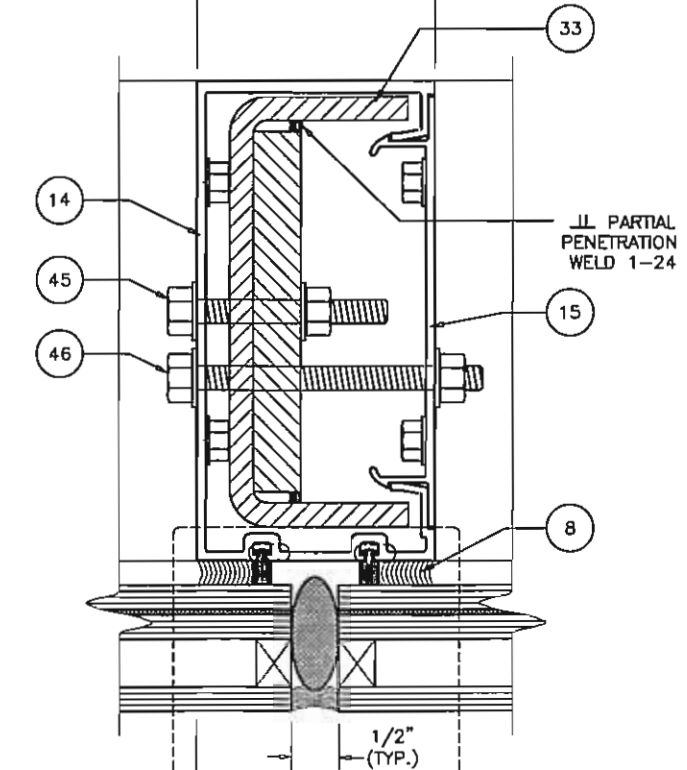
DRAWINGS FOR FLORIDA PRODUCT APPROVAL

FRAME OPENING  
 FRAME WIDTH  
 2 1/2"  
 D.L.O. D.L.O.



12A DETAIL  
 10 SCALE: 1:2

FRAME OPENING  
 FRAME WIDTH  
 2 1/2"  
 D.L.O. D.L.O.

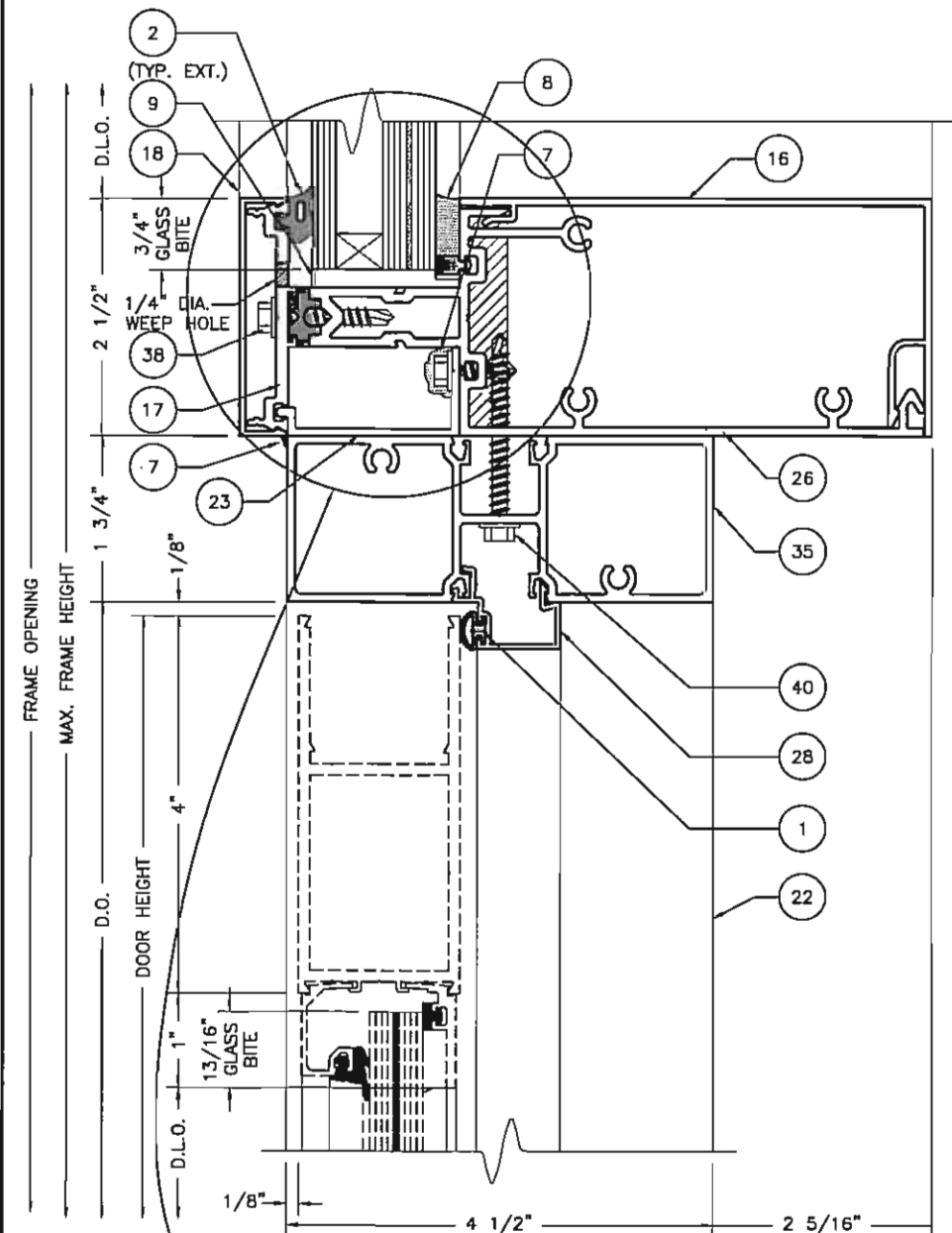


12B DETAIL  
 10 SCALE: 1:2

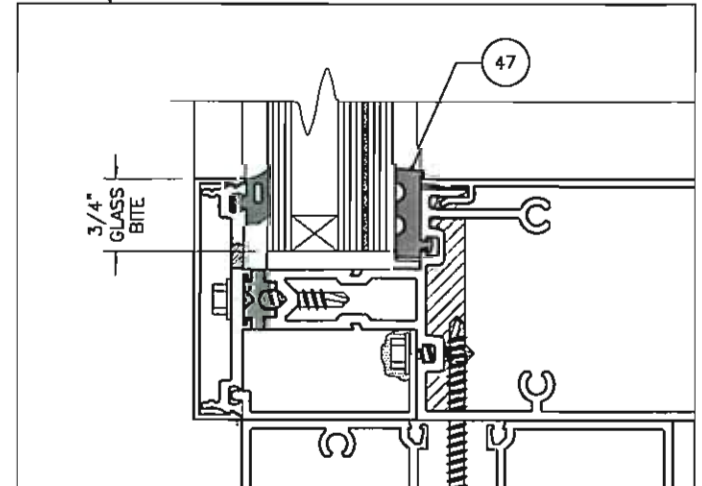
ELIZABETH A. BROADWAY  
 PROFESSIONAL ENGINEER  
 FLORIDA REGISTRATION NO. 38558  
 7/15/15

**B BROADWAY ENGINEERING, P.A.**  
 CIVIL, MECHANICAL, STRUCTURAL AND BUILDING DESIGN  
 See Us At [www.Broadway-Eng.Com](http://www.Broadway-Eng.Com)  
 1335 W. Cass Street  
 Tampa, Florida 33606 813-251-9244  
 Fax 813-251-9330 Bus. Email: [Info@Broadway-Eng.Com](mailto:Info@Broadway-Eng.Com)  
 Cadd. Email: [DGarr@Broadway-Eng.Com](mailto:DGarr@Broadway-Eng.Com)  
 BE-4435 Certificate of Authorization No. 4599

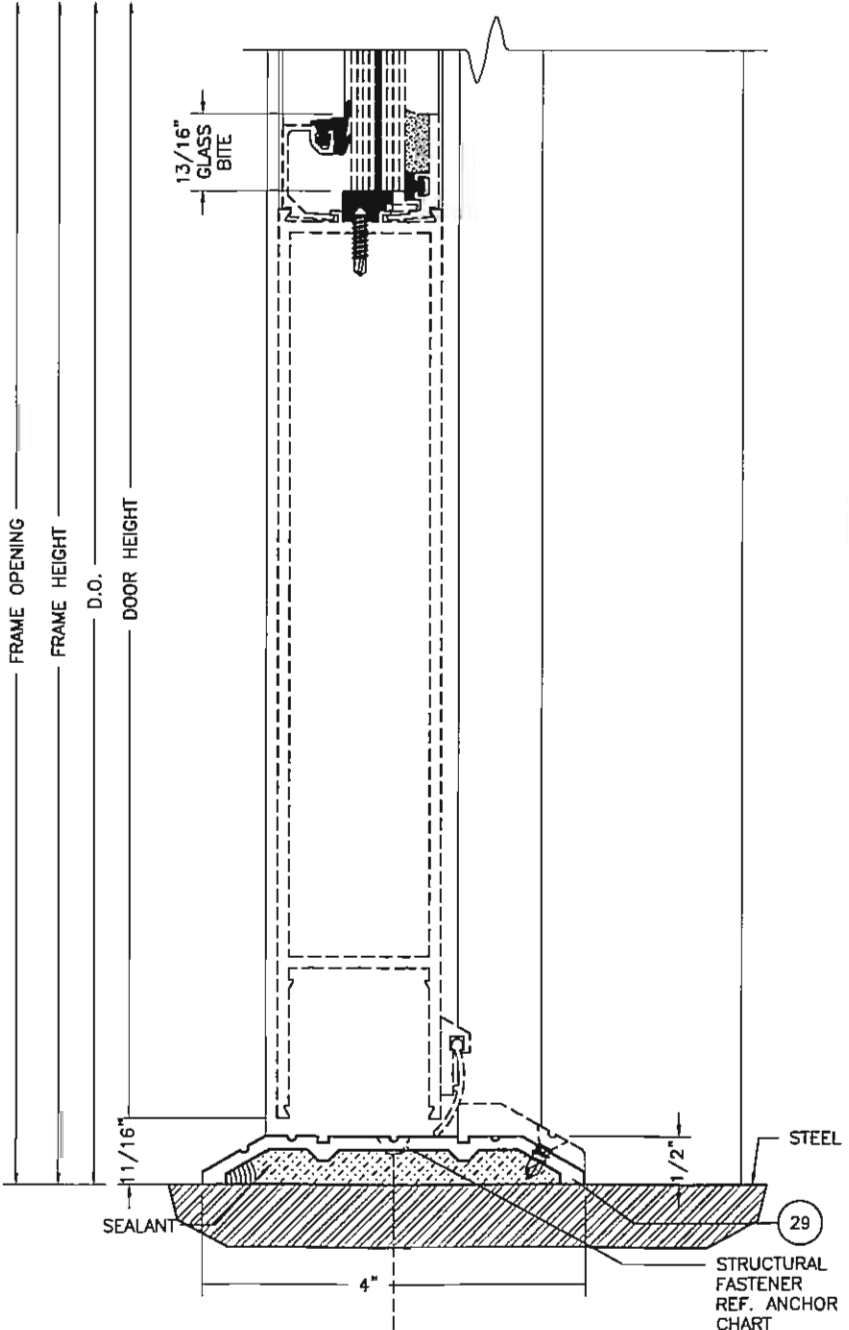




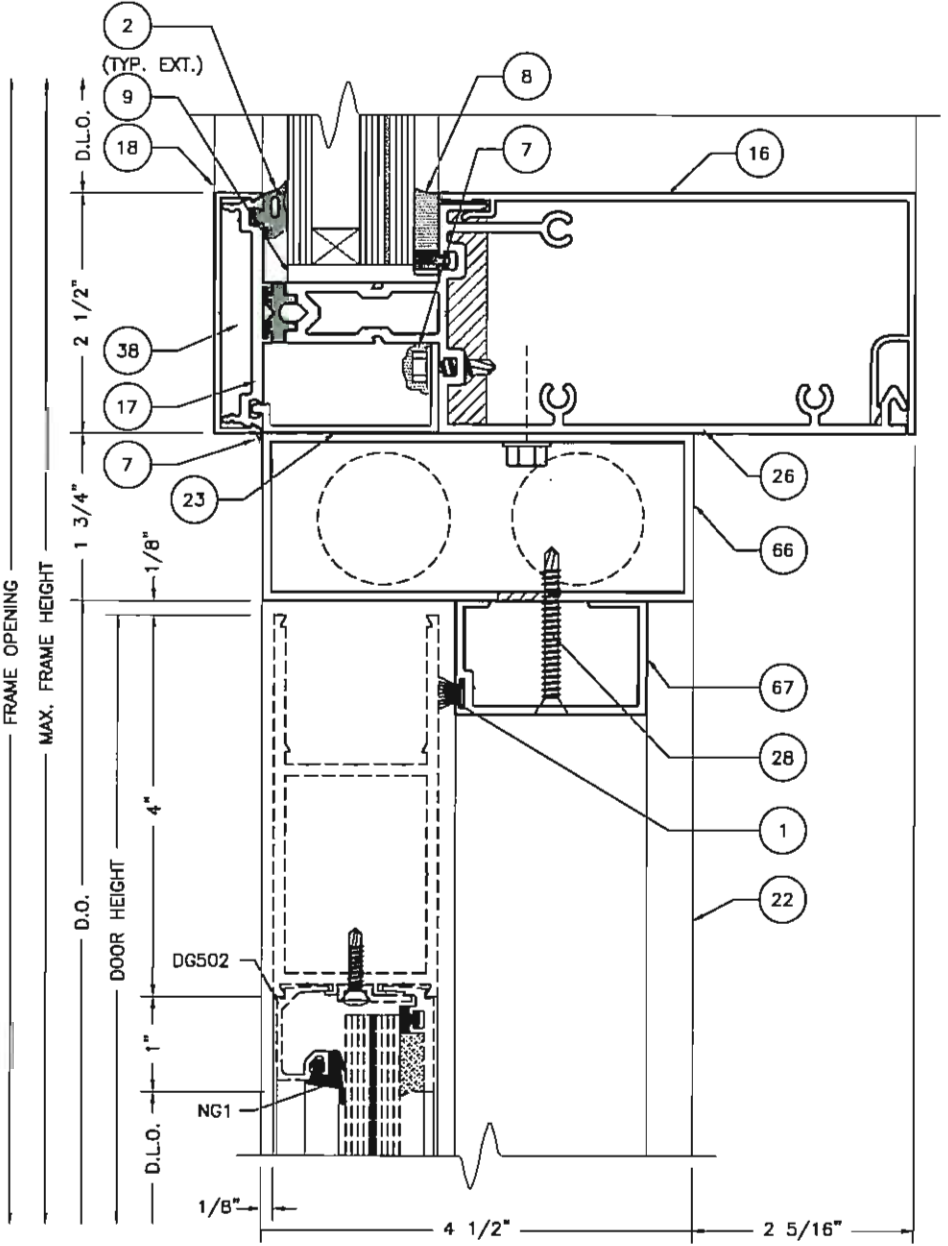
**13 DETAIL**  
SCALE: 1:2



DRY GLAZE HEADER



**14 DETAIL**  
SCALE: 1:2



**13A DETAIL**  
SCALE: 1:2

**BROADWAY ENGINEERING, P.A.**  
 CIVIL, MECHANICAL, STRUCTURAL AND BUILDING DESIGN  
 See Us At [www.Broadway-Eng.Com](http://www.Broadway-Eng.Com)  
**1335 W. Cass Street**  
**Tampa, Florida 33606 813-251-9244**  
 Fax 813-251-9330 Bus. Email: [Info@Broadway-Eng.Com](mailto:Info@Broadway-Eng.Com)  
 BE-4435 Cadd. Email: [DGarr@Broadway-Eng.Com](mailto:DGarr@Broadway-Eng.Com)  
 Certificate of Authorization No. 4599

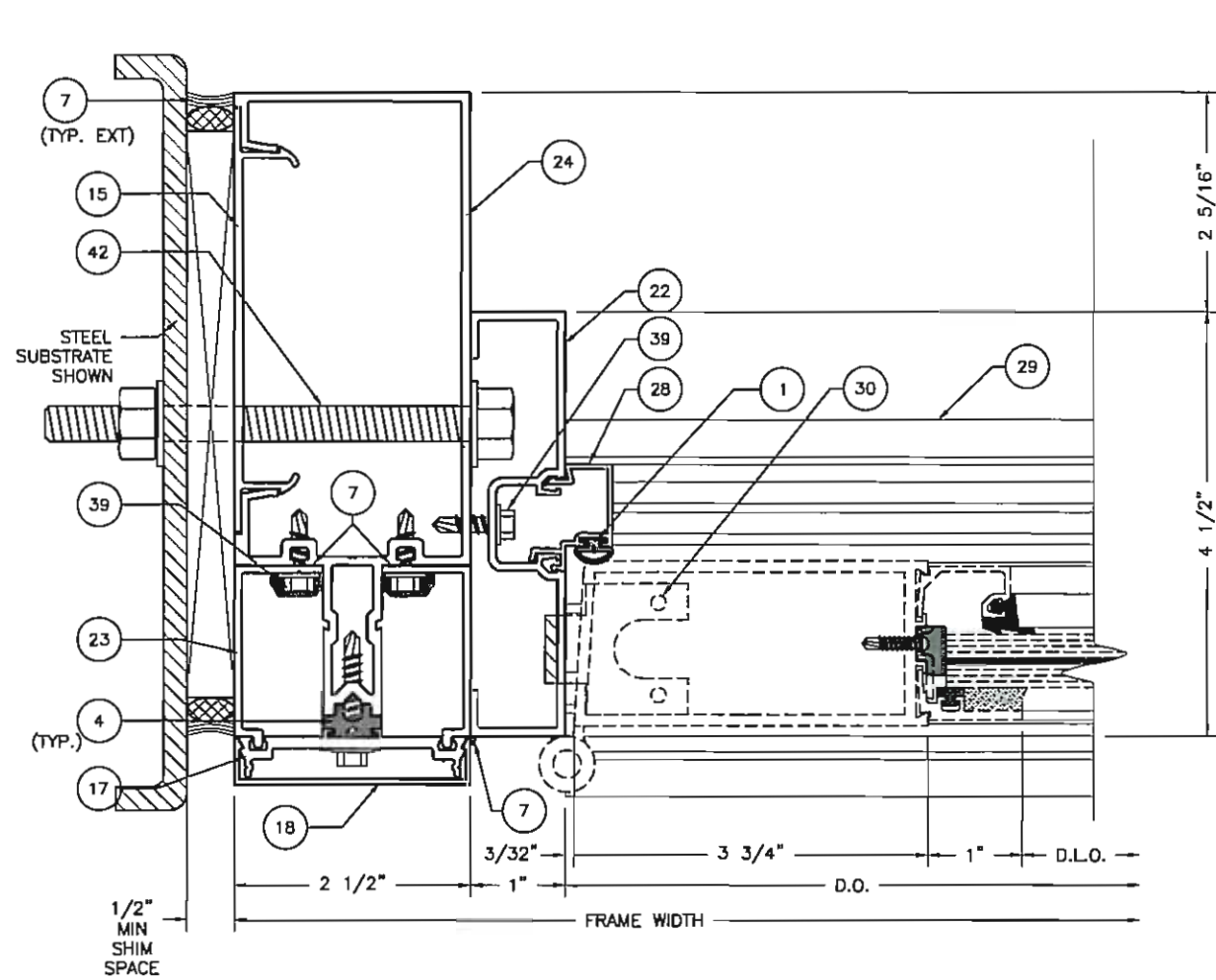
REV	BY	DATE	DESCRIPTION

Coral Architectural Products  
 3010 RICE MINE ROAD TUSCALOOSA, AL 35408  
 PHONE: 800-772-7737 FAX: 800-255-7320

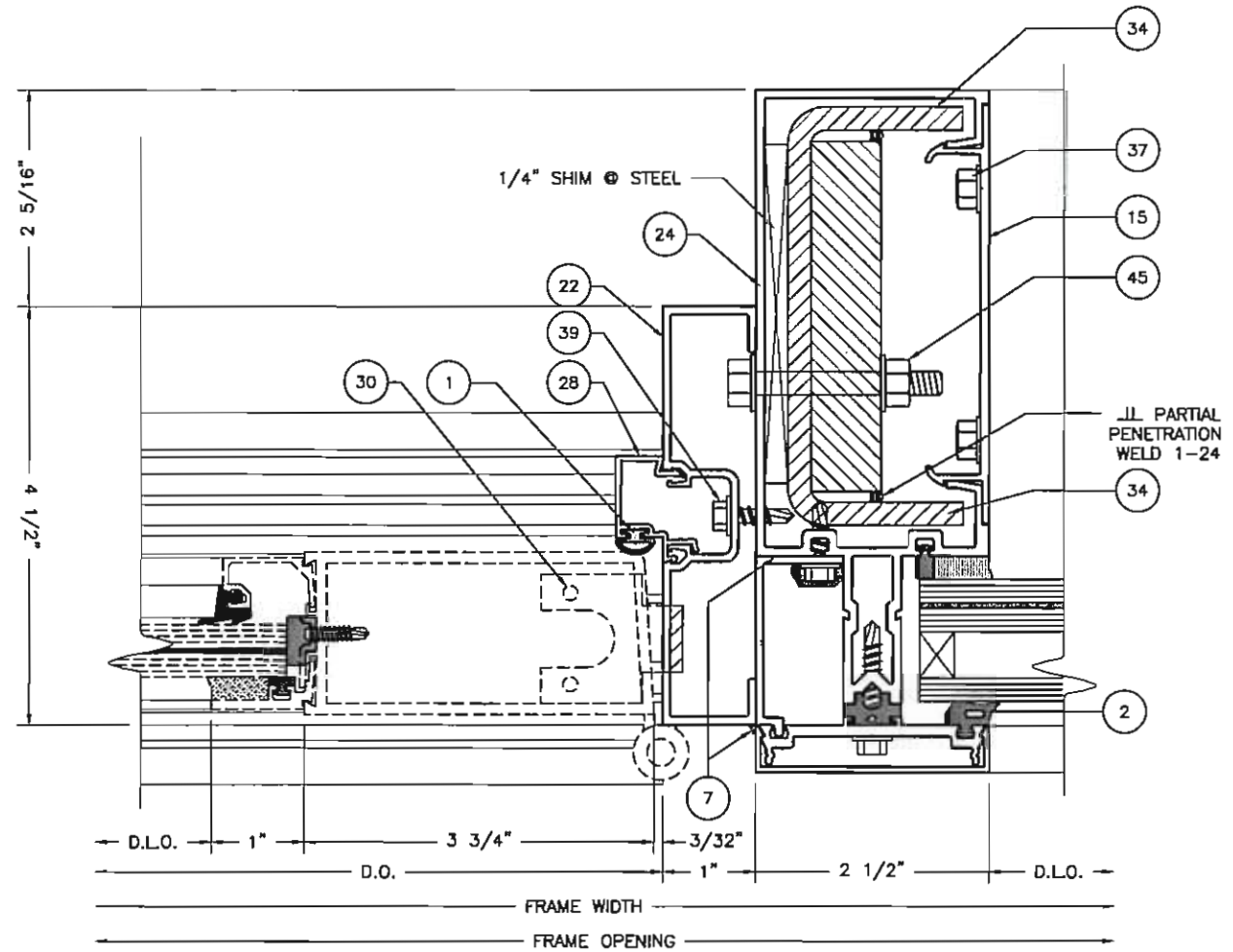
**PRODUCT APPROVAL DRAWINGS**  
**PW257 IMPACT-RESISTANT**  
**CURTAIN WALL SYSTEM**  
**PROTOCOLS: TAS 201-202-203**  
**DOOR AND FRAMING DETAILS**

DATE	7/8/15		
DRAWN	CHECKED	APPROVED	
MLL	WS	EAB	
PROJECT NO.			
DRAWING NO.	PW257_02		
SHEET	11 OF 23		

DRAWINGS FOR FLORIDA  
PRODUCT APPROVAL



**15 DETAIL**  
SCALE: 1/2



**16 DETAIL**  
SCALE: 1/2

ELIZABETH A. BROADWAY  
LICENSE  
No. E-38558  
*Elizabeth A. Broadway*  
ELIZABETH A. BROADWAY  
PROFESSIONAL ENGINEER  
FLORIDA REGISTRATION NO. 38558

**B BROADWAY ENGINEERING, P.A.**  
CIVIL, MECHANICAL, STRUCTURAL AND BUILDING DESIGN  
See Us At [www.Broadway-Eng.Com](http://www.Broadway-Eng.Com)  
1335 W. Cass Street  
Tampa, Florida 33606 813-251-9244  
Fax 813-251-9330 Bus. Email: [Info@Broadway-Eng.Com](mailto:Info@Broadway-Eng.Com)  
BE-4435 Cadd. Email: [DGarr@Broadway-Eng.Com](mailto:DGarr@Broadway-Eng.Com)  
Certificate of Authorization No. 4599

DRAWINGS FOR FLORIDA  
PRODUCT APPROVAL

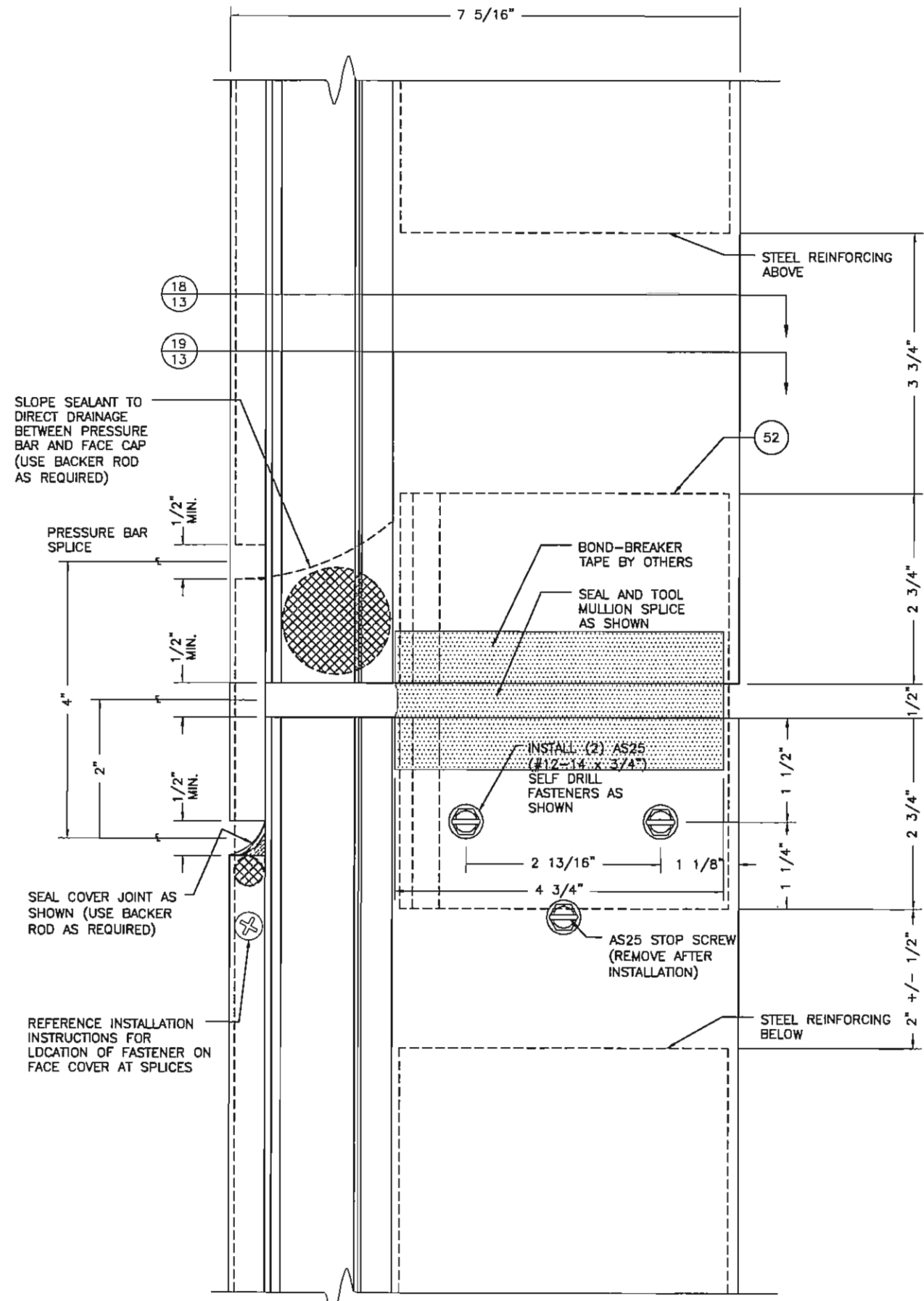
REV	BY	DATE	DESCRIPTION

**Coral**  
Architectural Products  
3010 RICE MINE ROAD, TUSCALOOSA, AL 35406  
PHONE: 800-772-7737 FAX: 800-255-7320

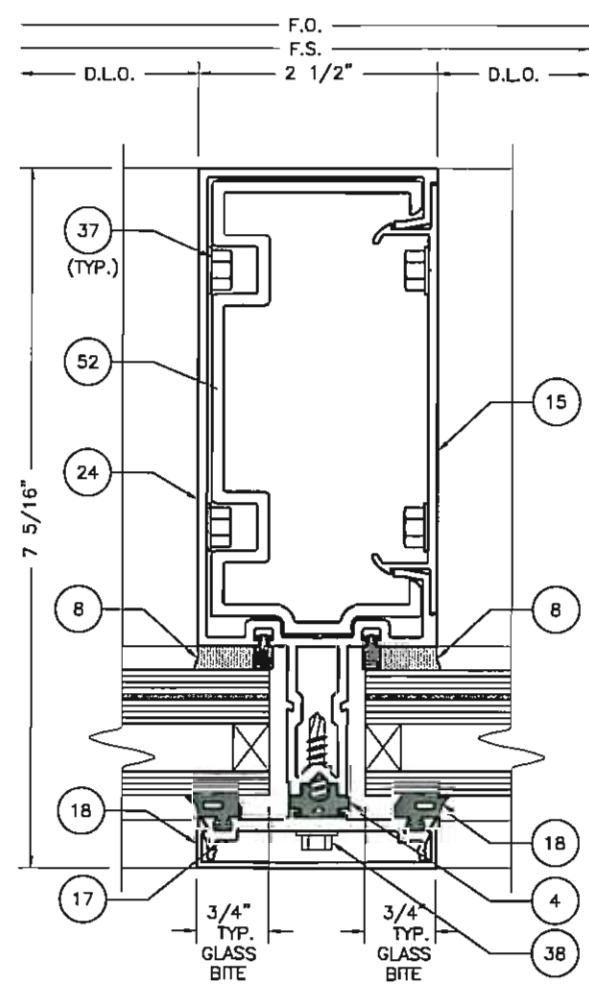
PRODUCT APPROVAL DRAWINGS  
PW257 IMPACT-RESISTANT  
CURTAIN WALL SYSTEM  
PROTOCOLS: TAS 201-202-203  
DOOR AND FRAMING DETAILS

DATE	7/8/15		
DRAWN	CHECKED	APPROVED	
MLL	WS	EAB	
PROJECT NO.			
DRAWING NO.			
PW257_02			
SHEET 12 OF 23			

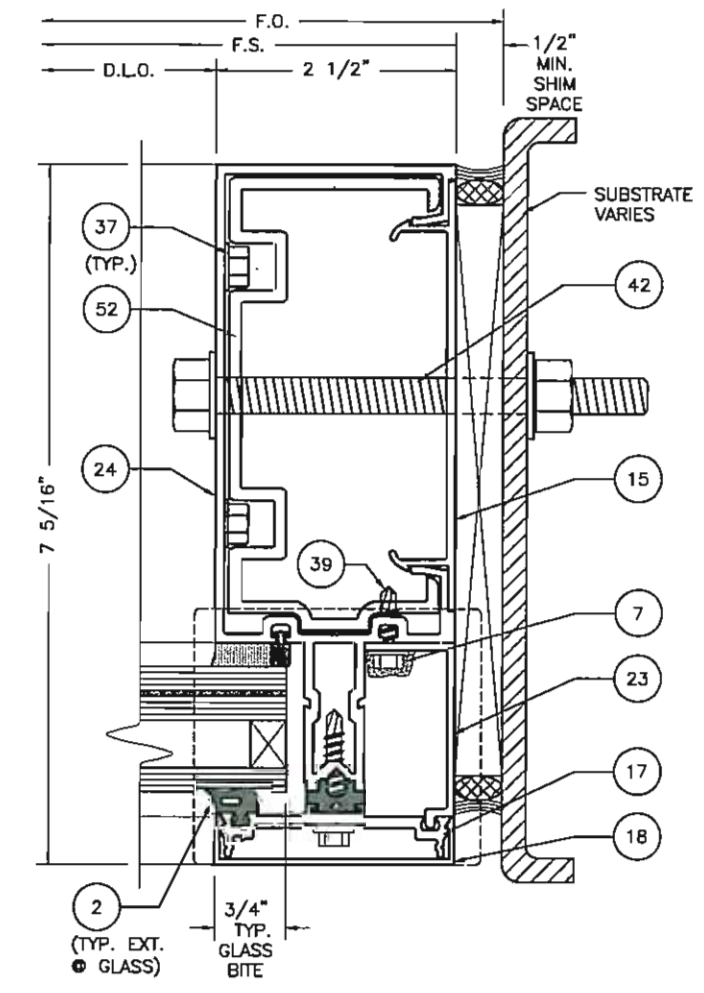




17 **DETAIL**  
13 SCALE: 1:2



18 **DETAIL**  
13 SCALE: 1:2



19 **DETAIL**  
13 SCALE: 1:2

ELIZABETH A. BROADWAY  
 PROFESSIONAL ENGINEER  
 FLORIDA REGISTRATION NO. 38558

**BROADWAY ENGINEERING, P.A.**  
 CIVIL, MECHANICAL, STRUCTURAL AND BUILDING DESIGN  
 See Us At [www.Broadway-Eng.Com](http://www.Broadway-Eng.Com)  
 1335 W. Cass Street  
 Tampa, Florida 33606 813-251-9244  
 Fax 813-251-9330 Bus. Email: [Info@Broadway-Eng.Com](mailto:Info@Broadway-Eng.Com)  
 BE-4435 Cadd. Email: [DGerr@Broadway-Eng.Com](mailto:DGerr@Broadway-Eng.Com)  
 Certificate of Authorization No. 4599

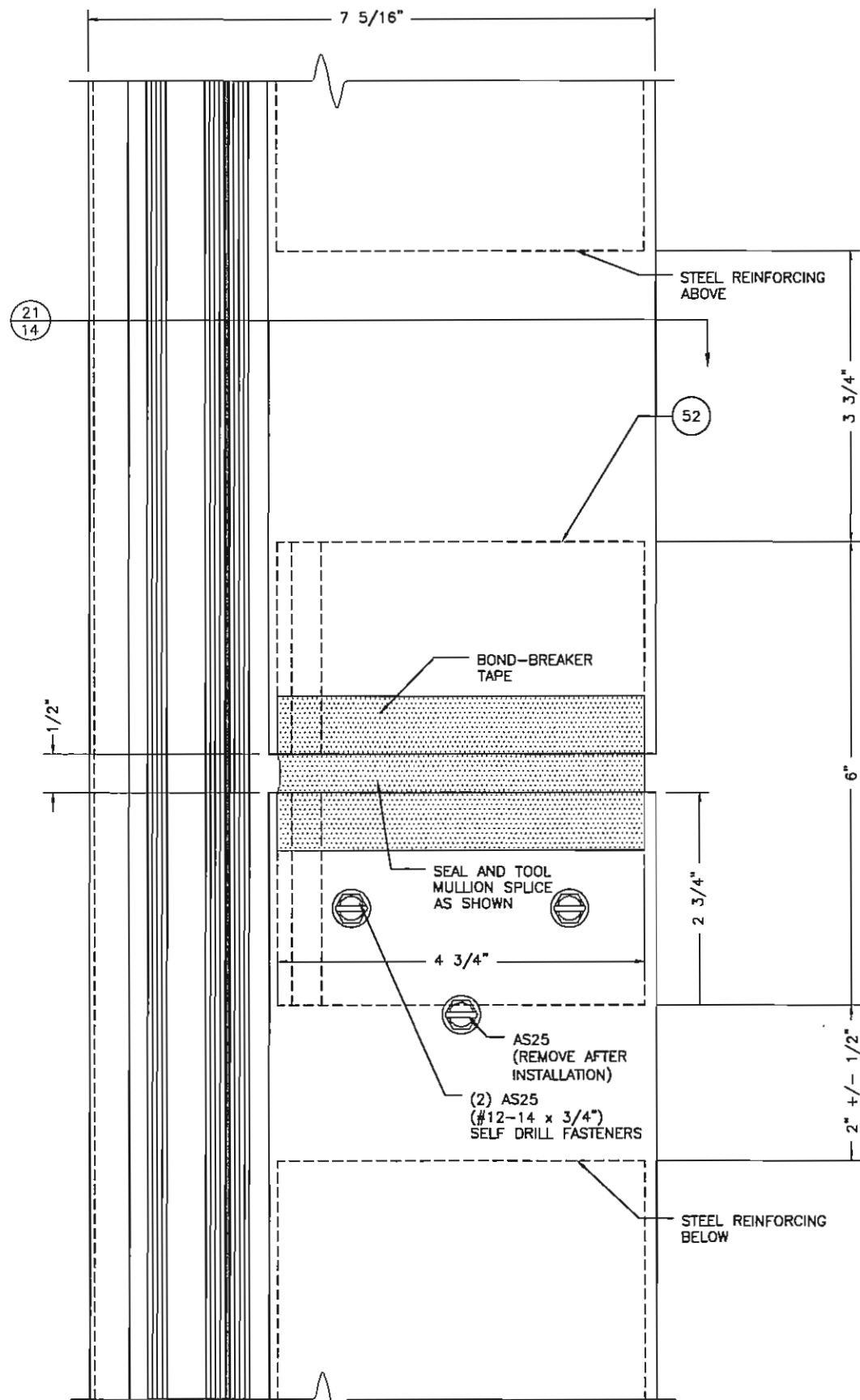
NO.	DATE	REV	BY	DESCRIPTION

**Coral**  
 Architectural Products  
 3010 RICE MINE ROAD, TUSCALOOSA, AL 35406  
 PHONE: 800-772-7737 FAX: 800-255-7320

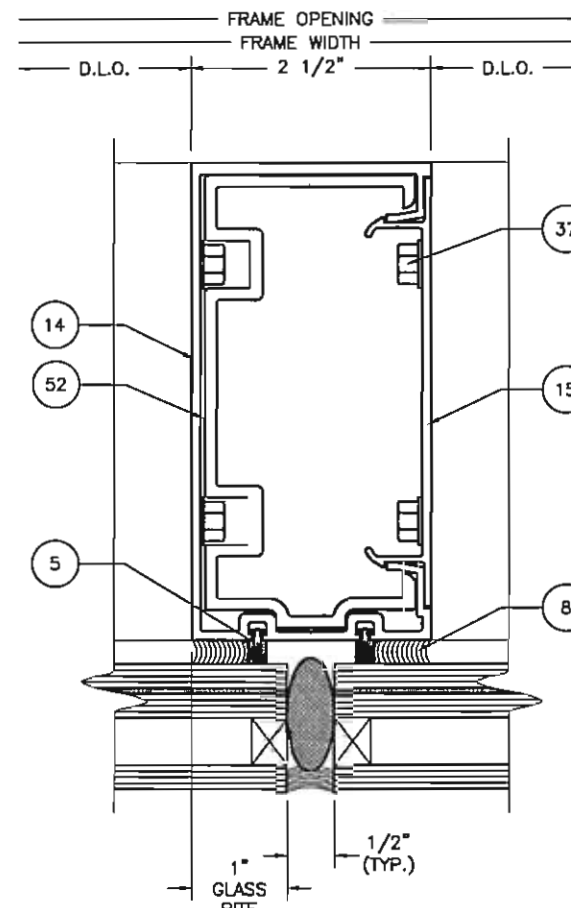
PRODUCT APPROVAL DRAWINGS  
 PW257 IMPACT-RESISTANT  
 CURTAIN WALL SYSTEM  
 PROTOCOLS: TAS 201-202-203  
 CAPTURED SPLICE DETAILS

DATE	7/8/15		
DRAWN	CHECKED	APPROVED	
ALL	W/S	EAB	
PROJECT NO.			
DRAWING NO.	PW257_02		
SHEET	13 OF 23		

DRAWINGS FOR FLORIDA  
 PRODUCT APPROVAL



20 **DETAIL**  
14 SCALE: 1:2



21 **DETAIL**  
14 SCALE: 1:2

ELIZABETH A. BROADWAY  
LICENSE  
No. F-38553  
ELIZABETH A. BROADWAY  
PROFESSIONAL ENGINEER  
FLORIDA REGISTRATION NO. 38553  
7/8/15

**B BROADWAY ENGINEERING, P.A.**  
CIVIL, MECHANICAL, STRUCTURAL AND BUILDING DESIGN  
See Us At [www.Broadway-Eng.Com](http://www.Broadway-Eng.Com)  
1335 W. Cass Street  
Tampa, Florida 33606 813-251-9244  
Fax 813-251-9330 Bus. Email: [Info@Broadway-Eng.Com](mailto:Info@Broadway-Eng.Com)  
BE-4435 Codd. Email: [DGarr@Broadway-Eng.Com](mailto:DGarr@Broadway-Eng.Com)  
Certificate of Authorization No. 4599

DRAWINGS FOR FLORIDA  
PRODUCT APPROVAL

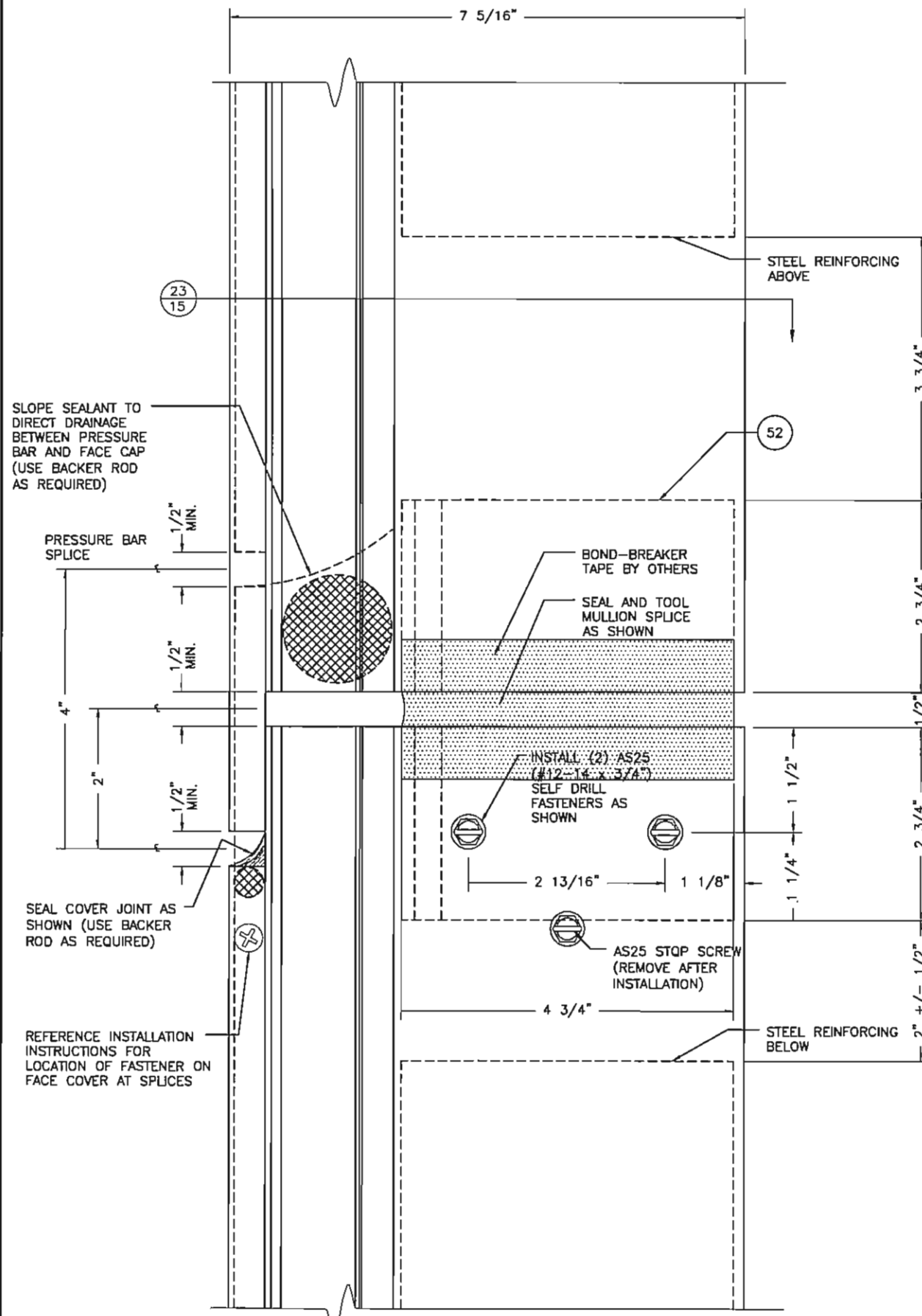
REV	BY	DATE	DESCRIPTION

**Coral**  
Architectural Products  
3010 RICE MINE ROAD, TUSCALOOSA, AL 35408  
PHONE: 800-772-7737 FAX: 800-255-7320

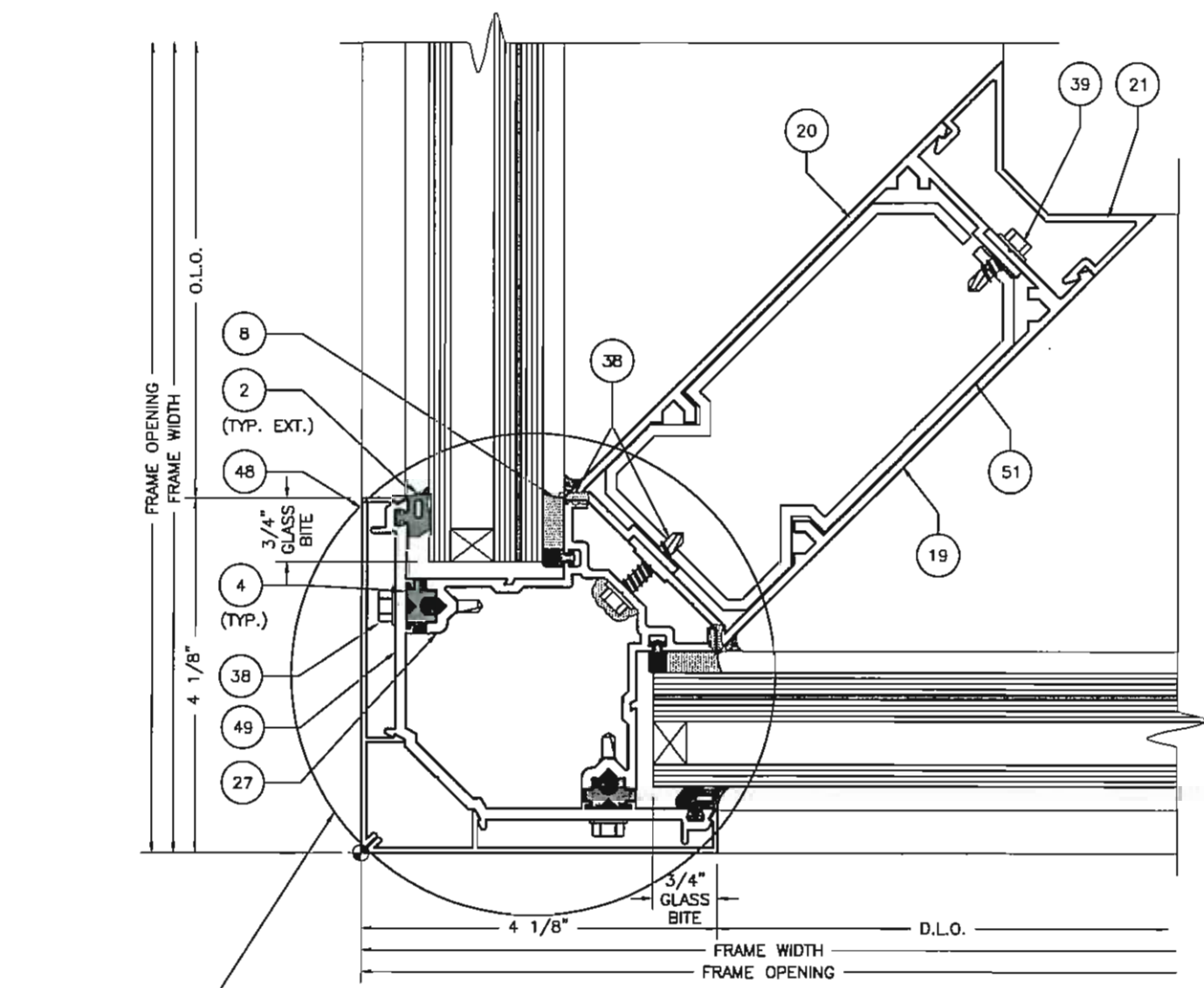
PRODUCT APPROVAL DRAWINGS  
PW257 IMPACT-RESISTANT  
CURTAIN WALL SYSTEM  
PROTOCOLS: TAS 201-202-203  
B.G. SPLICE DETAILS

DATE	7/8/15
DRAWN	MLL
CHECKED	WS
APPROVED	EAB
PROJECT NO.	
DRAWING NO.	PW257_02
SHEET	14 OF 23

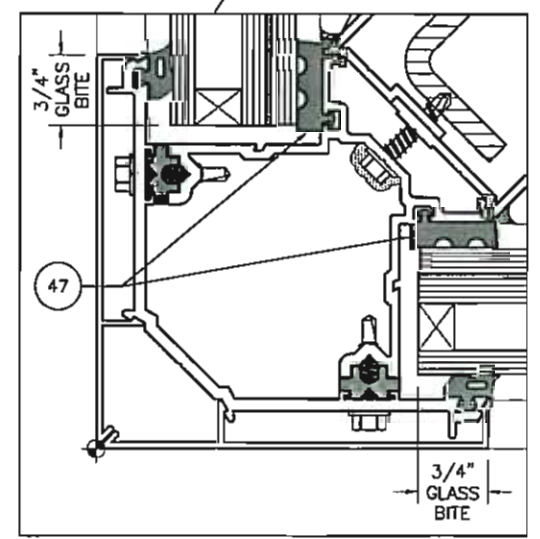




**22 DETAIL**  
SCALE: 1:2



**23 DETAIL**  
SCALE: 1:2



**DRY GLAZE GASKET**  
(0.90 SENTRY GLASS PLUS ONLY TYPE ID)

ELIZABETH A. BROADWAY  
PROFESSIONAL ENGINEER  
FLORIDA REGISTRATION NO. 38558  
Max. Exp. 5/31/15

**B BROADWAY ENGINEERING, P.A.**  
CIVIL, MECHANICAL, STRUCTURAL AND BUILDING DESIGN  
See Us At [www.Broadway-Eng.Com](http://www.Broadway-Eng.Com)  
1335 W. Cass Street  
Tampa, Florida 33606 813-251-9244  
Fax 813-251-9330 Bus. Email: [Info@Broadway-Eng.Com](mailto:Info@Broadway-Eng.Com)  
BE-4435 Cadd. Email: [DGarr@Broadway-Eng.Com](mailto:DGarr@Broadway-Eng.Com)  
Certificate of Authorization No. 4599

DRAWINGS FOR FLORIDA  
PRODUCT APPROVAL

REV	BY	DATE	DESCRIPTION

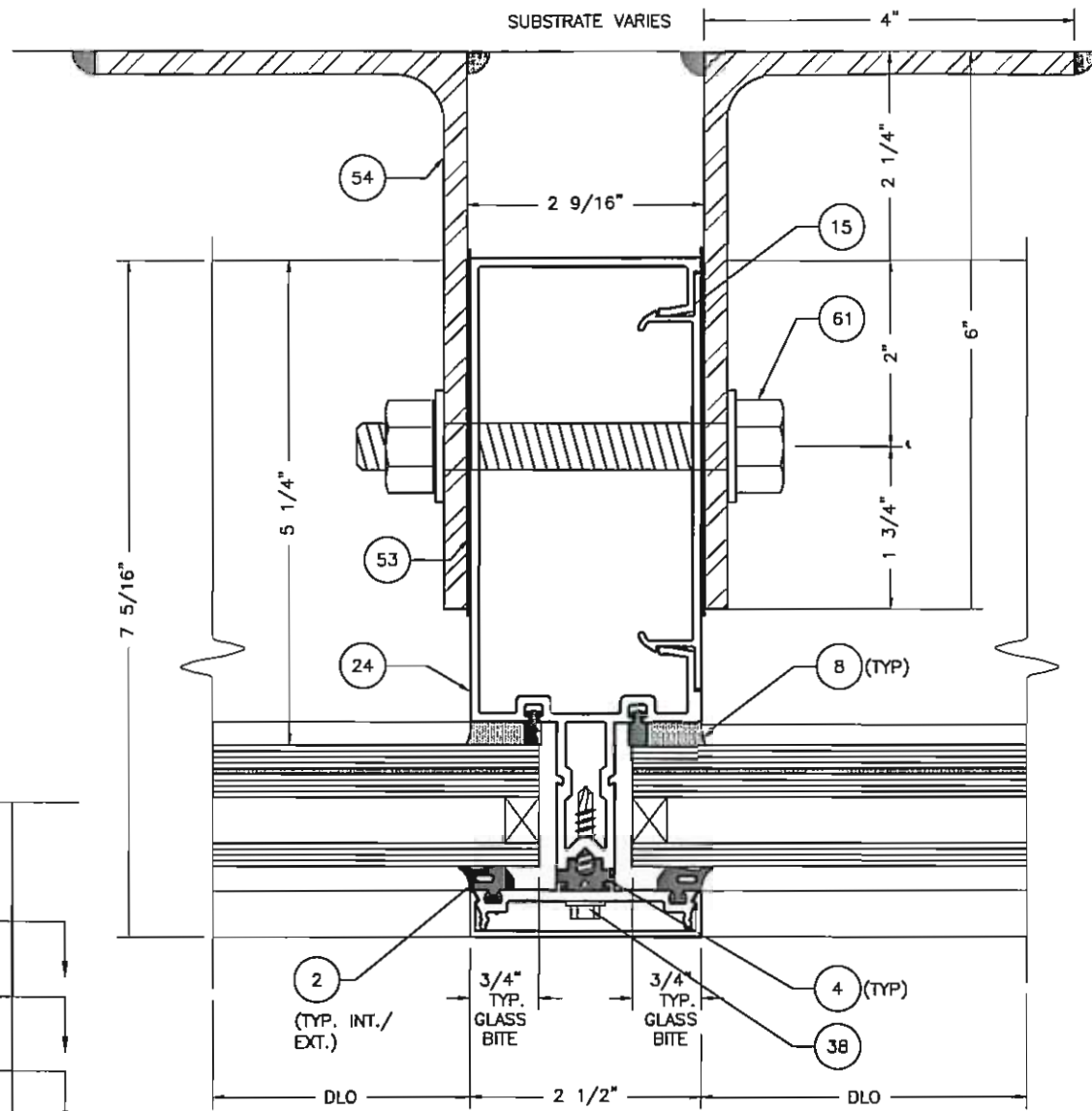
**Coral**  
Architectural Products  
3010 RICE MINE ROAD, TUSCALOOSA, AL 35608  
PHONE: 800-772-7737 FAX: 800-255-7320

PRODUCT APPROVAL DRAWINGS  
PW257 IMPACT-RESISTANT  
CURTAIN WALL SYSTEM  
PROTOCOLS: TAS 201-202-203  
CORNER SPLICE DETAILS

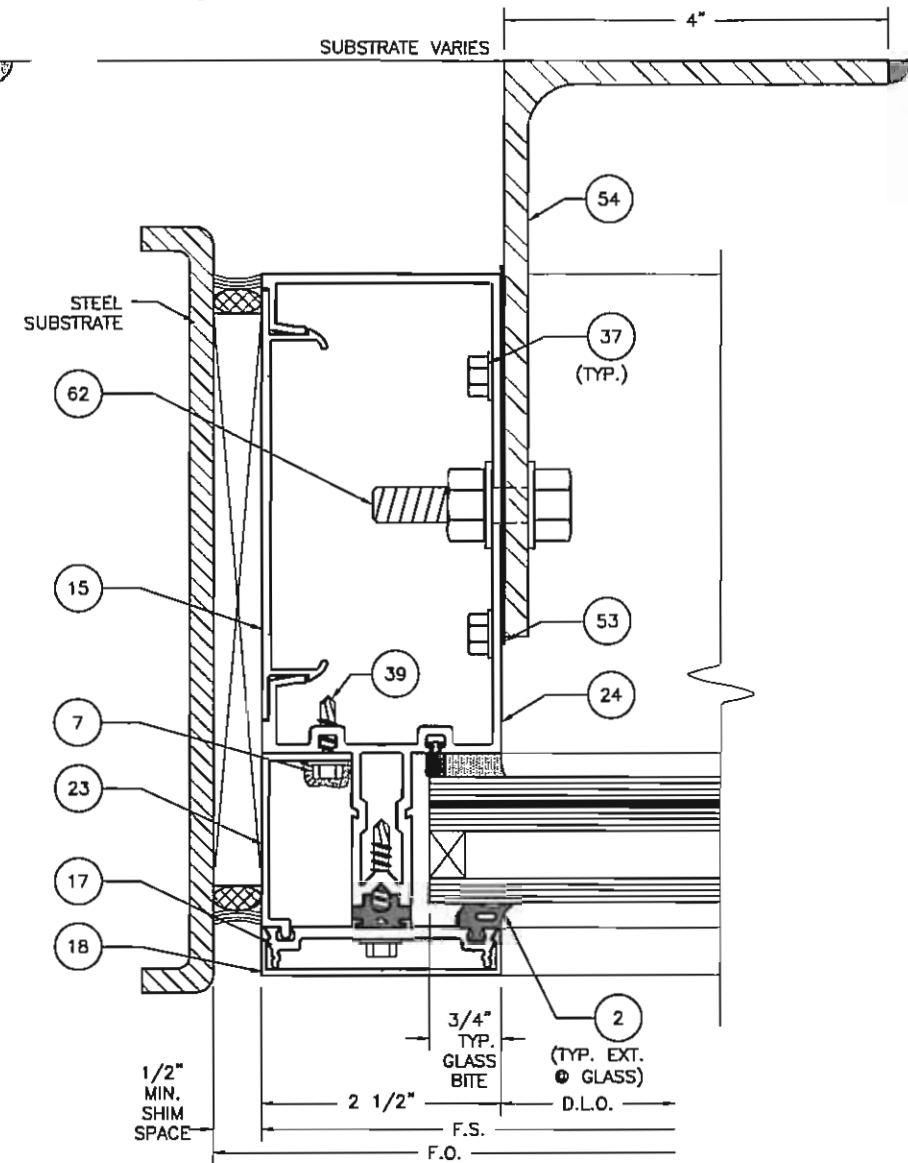
DATE	7/8/15	
DRAWN	CHECKED	APPROVED
MLL	WS	EAB
PROJECT NO.		
DRAWING NO.	PW257_02	
SHEET	15 OF 23	

NOTE: MULLIONS ARE TESTED TO 150" MAX SPACING BETWEEN ANCHOR LOCATIONS.

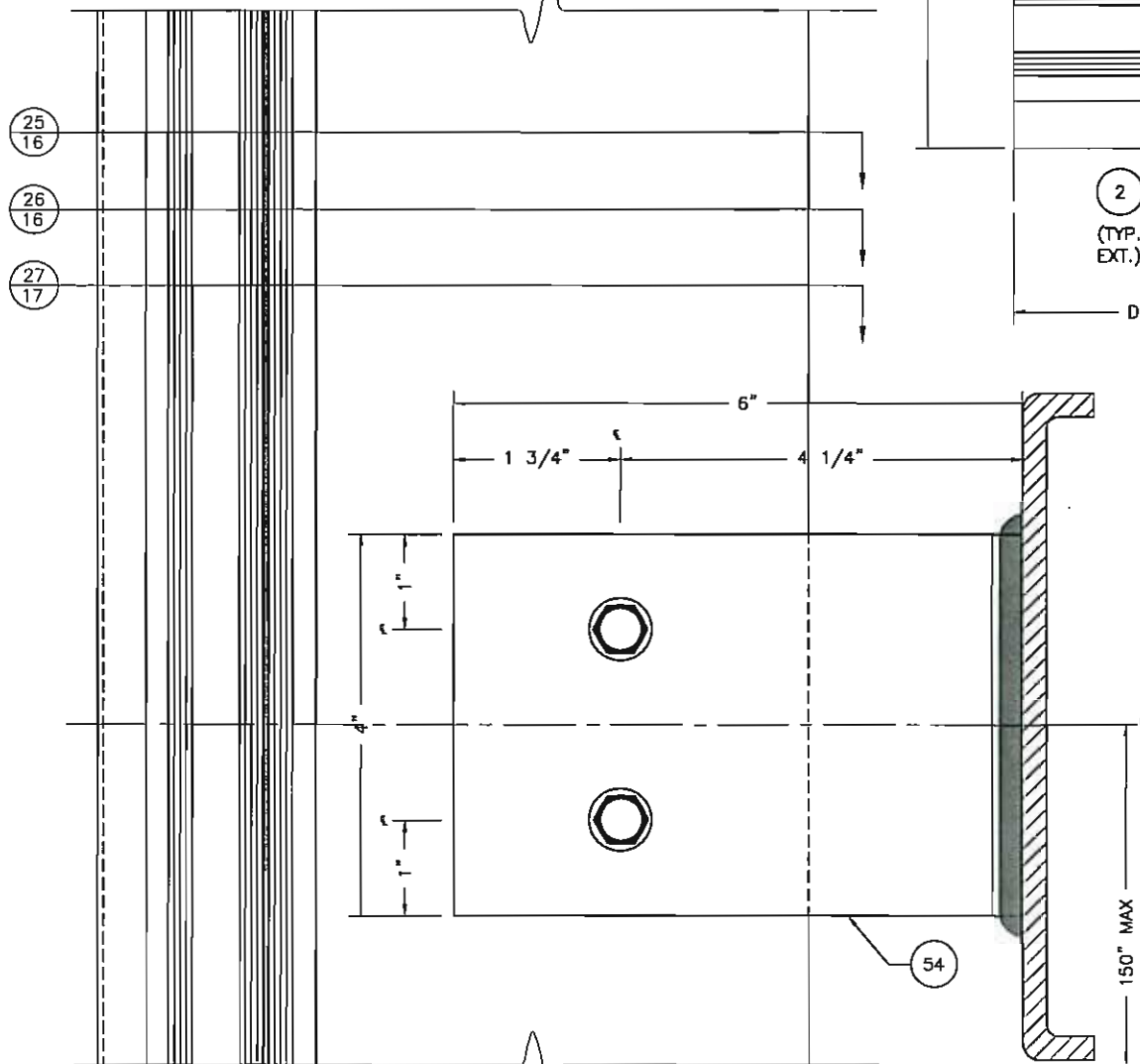
FASTENING OF MID-SPAN ANCHOR TO STRUCTURE SHALL BE DETERMINED BY THE PROJECT PROFESSIONAL ENGINEER



25 DETAIL  
18 SCALE: 1:2



26 DETAIL  
18 SCALE: 1:2



24 DETAIL  
18 SCALE: 1:2

REV	BY	DATE	DESCRIPTION

**Coral**  
Architectural Products  
3010 RICE MINE ROAD, TUSCALOOSA, AL 35406  
PHONE: 800-772-7737 FAX: 800-255-1320

PRODUCT APPROVAL DRAWINGS  
PW257 IMPACT-RESISTANT  
CURTAIN WALL SYSTEM  
PROTOCOLS: TAS 201-202-203  
ANCHOR DETAILS

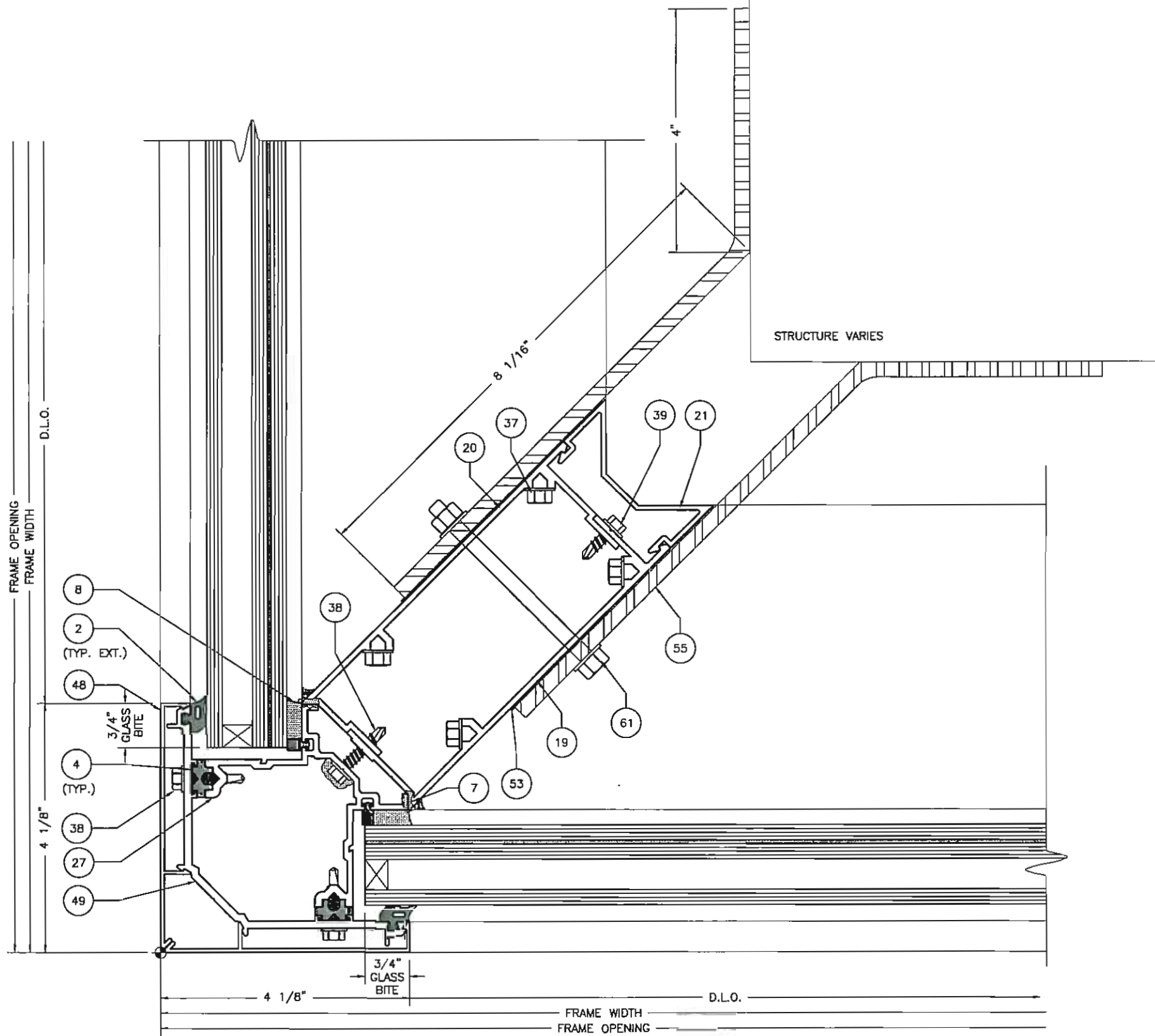
ELIZABETH A. BROADWAY  
LICENSE  
No. E-83558  
ELIZABETH A. BROADWAY  
PROFESSIONAL ENGINEER  
FLORIDA REGISTRATION NO. 38558

**B BROADWAY ENGINEERING, P.A.**  
CIVIL, MECHANICAL, STRUCTURAL AND BUILDING DESIGN  
See Us At [www.Broadway-Eng.Com](http://www.Broadway-Eng.Com)  
1335 W. Cass Street  
Tampa, Florida 33606 813-251-9244  
Fax 813-251-9330 Bus. Email: [Info@Broadway-Eng.Com](mailto:Info@Broadway-Eng.Com)  
Cadd. Email: [DGarr@Broadway-Eng.Com](mailto:DGarr@Broadway-Eng.Com)  
BE-4435 Certificate of Authorization No. 4599

DRAWINGS FOR FLORIDA  
PRODUCT APPROVAL

DATE	7/8/15	
DRAWN	CHECKED	APPROVED
ALL	WS	EAB
PROJECT NO.		
DRAWING NO.	PW257_02	
SHEET	16 OF 23	





NOTE: MULLIONS ARE TESTED TO 150" MAX SPACING BETWEEN ANCHOR LOCATIONS.

FASTENING OF MID-SPAN ANCHOR TO STRUCTURE SHALL BE DETERMINED BY THE PROJECT PROFESSIONAL ENGINEER

REV	BY	DATE	DESCRIPTION

**Coral**  
 Architectural Products  
 3010 RICE MINE ROAD, TUSCALOOSA, AL 35408  
 PHONE: 800-772-7737 FAX: 800-255-7320

PRODUCT APPROVAL DRAWINGS  
 PW257 IMPACT-RESISTANT  
 CURTAIN WALL SYSTEM  
 PROTOCOLS: TAS 201-202-203  
 CORNER ANCHOR DETAIL

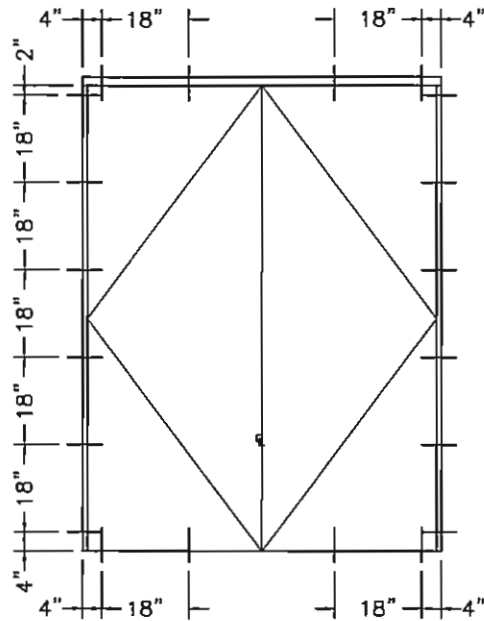
ELIZABETH A. BROADWAY  
 PROFESSIONAL ENGINEER  
 FLORIDA REGISTRATION NO. 38551  
 7/8/15

**B BROADWAY ENGINEERING, P.A.**  
 CIVIL, MECHANICAL, STRUCTURAL AND BUILDING DESIGN  
 See Us At [www.Broadway-Eng.Com](http://www.Broadway-Eng.Com)  
 1335 W. Cass Street  
 Tampa, Florida 33606 813-251-9244  
 Fax 813-251-9330 Bus. Email: [Info@Broadway-Eng.Com](mailto:Info@Broadway-Eng.Com)  
 Cadd. Email: [DGorr@Broadway-Eng.Com](mailto:DGorr@Broadway-Eng.Com)  
 BE-4435 Certificate of Authorization No. 4599

DRAWINGS FOR FLORIDA  
 PRODUCT APPROVAL

DATE	7/8/15
DRAWN	MLL
CHECKED	WS
APPROVED	EAB
PROJECT NO.	
DRAWING NO.	PW257_02
SHEET	17 OF 23

27 DETAIL  
 17 SCALE: 1:2

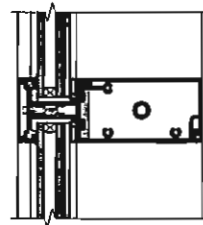


**H** LOCATIONS FOR DOOR SUB-FRAME ATTACHMENT TO CURTAIN WALL ALUMINUM

ANCHOR CHART					
Bolt Type	Location	Min. Embedment	Min. Edge Distance	Anchor Type Mark	
				65 PSF	80 PSF
<b>1 Concrete - Min. 3,000 psi</b>					
1/2" x 4 1/2" Large Diameter Tapcon	Head/Sill	3 1/2"	2 1/2"	D	F
1/2" x 4 1/2" Wedge Bolt (See Note 5)	Head/Sill	3 1/2"	2 1/2"	D	E, F
1/2" x 5" Large Diameter Tapcon (See Note 4)	Jamb	2 1/2"	2 1/2"	A	C
1/2" x 5" Wedge Bolt (See Note 4)	Jamb	2 1/2"	2 1/2"	A	C
1/4" x 2" Tapcon	Threshold	1 1/4"	2"	H	H
<b>2 Steel - 1/4" Minimum Thickness</b>					
1/2" - 13 x 2" Grade 5 HHB, Nut and Washers	Head/Sill	Through Bolt	N/A	D	D
1/2" - 13 x 4 1/2" Grade 5 HHB, Nut and Washers	Jamb	Through Bolt	N/A	A	A
3/4" - 10 x 4 1/2" Grade 5 HHB, Nut and Washers	Twin Span Clips at Verticals and Jamb Through Bolt All Locations				
<b>3 Steel Stud - Minimum 18 Gauge</b>					
#12 x 1 1/4" HWH Self Drill (AS 32)	Head/Sill	N/A	3/4"	E	G
#12 x 1 1/4" HWH Self Drill (AS 32) (See Note 4)	Jamb	N/A	3/4"	A	B
#12 x 1 1/4" HWH Self Drill (AS 32)	Sub Frame Jamb and Head			H	H

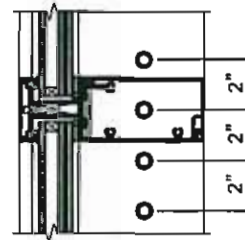
**Notes:**

1. All Anchors begin 4" from inside of Jamb or Vertical at head and sill Locations.
2. Jamb Anchors are at Horizontal Locations Only
3. Typical Applications shown above. Concrete and Steel can be used in same application (Example - 1. Concrete at Sill with 2. Steel at Head)
4. PW 650/202 Jamb with SR 150 Steel & Jamb Anchor type A may be substituted for listed Jamb Anchoring.
5. Head/sill Anchor Type F is required for Mullion Spacing > 5.0 FT.

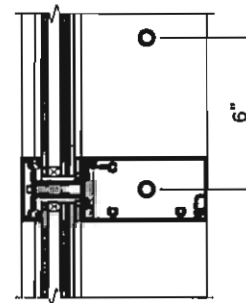


ANCHOR AT EACH HORIZONTAL

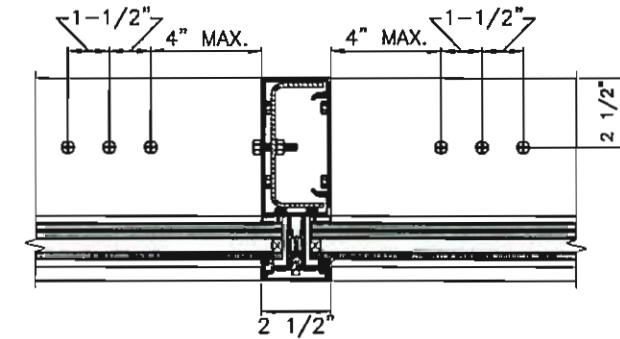
**A** JAMB ANCHOR



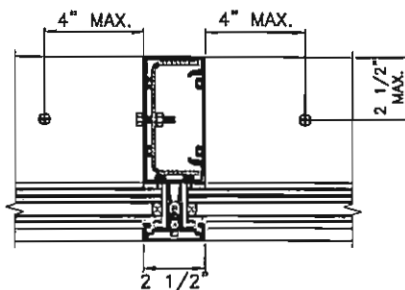
**B** JAMB ANCHOR  
\* SEE NOTE 4



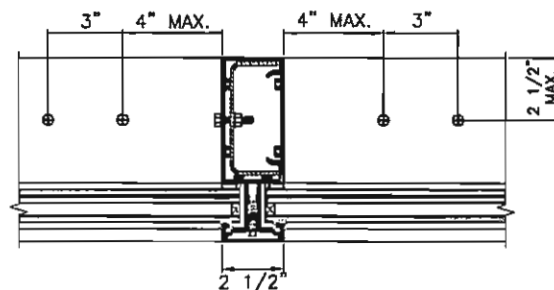
**C** JAMB ANCHOR  
\* SEE NOTE 4



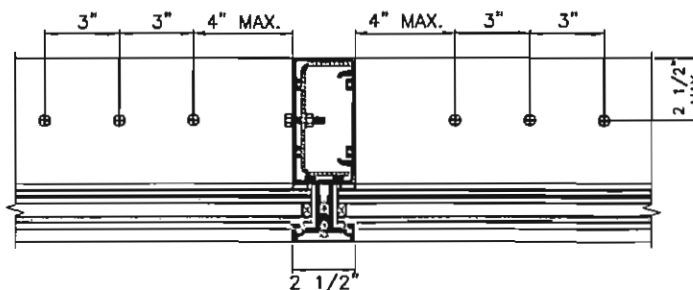
**G** HEAD/SILL ANCHOR



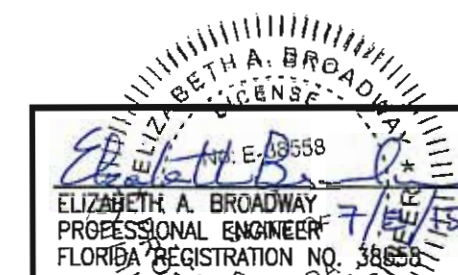
**D** HEAD/SILL ANCHOR



**E** HEAD/SILL ANCHOR



**F** HEAD/SILL ANCHOR



**BROADWAY ENGINEERING, P.A.**  
 CIVIL, MECHANICAL, STRUCTURAL AND BUILDING DESIGN  
 See Us At www.broadway-eng.com  
 1335 W. Cass Street  
 Tampa, Florida 33606 813-251-9244  
 Fax 813-251-9330 Bus. Email: Info@Broadway-Eng.Com  
 BE-4435 Cadd. Email: DGarr@Broadway-Eng.Com  
 Certificate of Authorization No. 4599

DRAWINGS FOR FLORIDA PRODUCT APPROVAL

**Corral** Architectural Products  
 3010 RICE MINE ROAD TUSCALOOSA, AL 35608  
 PHONE: 800-772-7737 FAX: 800-255-7320

PRODUCT APPROVAL DRAWINGS  
 PW257 IMPACT-RESISTANT  
 CURTAIN WALL SYSTEM  
 PROTOCOLS: TAS 201-202-203  
 ANCHOR CHART

DATE	7/8/15	
DRAWN	CHECKED	APPROVED
ALL	WS	EAB
PROJECT NO.		
DRAWING NO.		
PW257_02		
SHEET		
18 OF 23		



# BILL OF MATERIALS

ITEM NO.	P/N	DESCRIPTION	DIMENSIONS	MATERIAL	MANUFACTURER	NOTES
1	NG5	BULB GASKET - DOORFRAME STOP	0.165 SPACE	EPDM	VARIES	
2	NG10	EXTERIOR GLAZING GASKET	0.250 SPACE	EPDM	VARIES	
3	NG11	EXTERIOR PERIMETER GASKET	0.300 SPACE	EPDM	VARIES	
4	NG12	PRESSURE BAR GASKET (ISOLATOR)	0.140 SPACE	EPDM	VARIES	
5	NG14	INTERIOR SPACER GASKET	0.250 SPACE	EPDM	VARIES	
6	SM5601	JOINT SEALANT TAPE	0.500 X 0.125 X VARIES	BUTYL	SCHNEE-MOOREHEAD	
7	795	SILICONE - PERIMETER SEALANT	FILL SPACE	SILICONE	DOW CORNING	USED @ PERIMETER
8	995	SILICONE - GLASS TO METAL	FILL SPACE	SILICONE	DOW CORNING	GLASS TO METAL AND INTERNAL
9	SB18	SETTING BLOCK @ SILL & HORIZONTAL	1.562 X 0.188 X 4.000	EPDM	VARIES	2 PER LITE
10	SP204	END DAM @ CAPTURED MULLION	1.287 X 1.787 X 0.745	EVA FOAM	CORAL INDUSTRIES, INC.	LOCATE 1 @ EACH END OF HORIZONTAL
11	SP208	BRIDGE DAM @ B.G. MULLION	3.123 X 1.562 X 0.745	EVA FOAM	CORAL INDUSTRIES, INC.	LOCATE 1 @ HORIZONTAL AND B.G. MULLION
12	SP211	MULLION CAP	3.000 X 2.691 X 0.048	6063-T6 ALUMINUM	CORAL INDUSTRIES, INC.	LOCATE @ TOP AND BOTTOM OF VERTICAL
13	2086	JACKSON 2086 PANIC	36.000 X 7.3125 X 3.000	ALUMINUM	JACKSON	
14	PW151	B.G. MULLION	2.500 X 5.000 X 0.094	6063-T6 ALUMINUM	CORAL INDUSTRIES, INC.	
15	PW202	OPEN BACK MULLION FILLER	0.681 X 4.484 X 0.094	6063-T6 ALUMINUM	CORAL INDUSTRIES, INC.	
16	PW203	HEAD/ SILL/ HORIZONTAL TRIM	2.500 X 4.980 X 0.078	6063-T6 ALUMINUM	CORAL INDUSTRIES, INC.	
17	PW204	PRESSURE BAR	2.443 X 0.433 X 0.125	6063-T6 ALUMINUM	CORAL INDUSTRIES, INC.	
18	PW205	FACE COVER	2.500 X 0.500 X 0.062	6063-T6 ALUMINUM	CORAL INDUSTRIES, INC.	
19	PW208	FEMALE HALF 90° CORNER	1.625 X 6.110 X 0.094	6063-T6 ALUMINUM	CORAL INDUSTRIES, INC.	
20	PW209	MALE HALF 90° CORNER	1.875 X 6.110 X 0.094	6063-T6 ALUMINUM	CORAL INDUSTRIES, INC.	
21	PW210	INTERIOR CORNER TRIM	2.500 X 1.288 X 0.078	6063-T6 ALUMINUM	CORAL INDUSTRIES, INC.	
22	PW214	SUB DOORFRAME	1.000 X 4.500 X 0.080	6063-T6 ALUMINUM	CORAL INDUSTRIES, INC.	
23	PW613	POCKET FILLER FOR PW650	0.937 X 1.943 X 0.078	6063-T6 ALUMINUM	CORAL INDUSTRIES, INC.	
24	PW650	VERTICAL MULLION	2.500 X 6.593 X 0.094	6063-T6 ALUMINUM	CORAL INDUSTRIES, INC.	
25	PW652	HEAD/SILL	2.390 X 6.495 X 0.094	6063-T6 ALUMINUM	CORAL INDUSTRIES, INC.	
26	PW655	INTERMEDIATE HORIZONTAL	2.390 X 6.495 X 0.094	6063-T6 ALUMINUM	CORAL INDUSTRIES, INC.	
27	PW656	GLAZING TEE - 90° CORNER	3.334 X 3.334 X 0.094	6063-T6 ALUMINUM	CORAL INDUSTRIES, INC.	
28	DS200	DOORFRAME STOP	0.882 X 1.149 X 0.050	6063-T6 ALUMINUM	CORAL INDUSTRIES, INC.	
29	TH4	THRESHOLD	0.500 X 4.000 X 0.125	6063-T6 ALUMINUM	CORAL INDUSTRIES, INC.	
30	TH403	THRESHOLD CLIP	1.390 X 1.516 X 1.909	STEEL	VARIES	

(CONTINUED ON SHEET 20)

ELIZABETH A. BROADWAY  
 PROFESSIONAL ENGINEER  
 FLORIDA REGISTRATION NO. 38558

**BROADWAY ENGINEERING, P.A.**  
 CIVIL, MECHANICAL, STRUCTURAL AND BUILDING DESIGN  
 See Us At [www.Broadway-Eng.Com](http://www.Broadway-Eng.Com)  
**1335 W. Cass Street**  
**Tampa, Florida 33606 813-251-9244**  
 Fax 813-251-9330 Bus. Email: [Info@Broadway-Eng.Com](mailto:Info@Broadway-Eng.Com)  
 Cadd. Email: [OGarr@Broadway-Eng.Com](mailto:OGarr@Broadway-Eng.Com)  
 BE-4435 Certificate of Authorization No. 4599

DRAWINGS FOR FLORIDA  
PRODUCT APPROVAL

DATE	REV	BY	DESCRIPTION

Coral Architectural Products  
 3010 RICE MINE ROAD TUSCALOOSA, AL 35406  
 PHONE: 800-772-7737 FAX: 800-255-7320

PRODUCT APPROVAL DRAWINGS  
 PW257 IMPACT-RESISTANT  
 CURTAIN WALL SYSTEM  
 PROTOCOLS: TAS 201-202-203  
 BILL OF MATERIALS

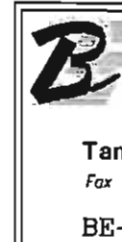
DATE	7/8/15	
DRAWN	CHECKED	APPROVED
MLL	WS	EAB
PROJECT NO.		
DRAWING NO.	PW257_02	
SHEET	19 OF 23	

## BILL OF MATERIALS

ITEM NO.	P/N	DESCRIPTION	DIMENSIONS	MATERIAL	MANUFACTURER	NOTES
31	SR150	REINFORCEMENT CHANNEL	4.500 X 1.875 X 0.250	A36 STEEL	VARIES	STEEL REINFORCEMENT FOR (14) AND (24)
32	SR504	REINFORCEMENT CHANNEL	4.625 X 1.4375 X 0.250	A36 STEEL	VARIES	STEEL REINFORCEMENT FOR (19) AND (20)
33		SR150 WITH REINFORCEMENT BAR	3.750 X 0.500	A36 STEEL	VARIES	STEEL REINFORCEMENT FOR (14) AND (24)
34		SR150 WITH REINFORCEMENT BAR	3.750 X 0.750	A36 STEEL	VARIES	STEEL REINFORCEMENT FOR (14) AND (24)
35	FL207	DOOR HEADER	1.750 X 4.500 X 0.085	6063-T6 ALUMINUM	CORAL INDUSTRIES, INC.	
36	AS13	SQUARE NUT	1.475 X 1.475 X .180	STEEL	VARIES	
37	AS16	FASTENER	#14 X 1" HHSTS	STEEL	VARIES	TYP. SPLINE SCREW
38	AS32	FASTENER	#12 x 1-1/4" HWH #3 SELF DRILL	STEEL	VARIES	
39	AS25	FASTENER	#12 x 3/4" HWH SELF DRILL	STEEL	VARIES	
40	AS37	FASTENER	#12 X 2" HWH SELF DRILL	STEEL	VARIES	
41	FASTENER	PERIMETER ANCHOR TO STEEL SUBSTRATE	1/2"-13 X 2" BOLT WITH WASHER AND NUT	STEEL	VARIES	
42	FASTENER	PERIMETER ANCHOR TO STEEL SUBSTRATE	1/2"-13 X 4-1/2" BOLT WITH WASHER AND NUT	STEEL	VARIES	
43	FASTENER	PERIMETER ANCHOR TO CONCRETE SUBSTRATE	1/2"X3-1/2" MIN. EMBED WEDGE ANCHOR POWERS	STEEL	VARIES	
44	FASTENER	PERIMETER ANCHOR TO STEEL SUBSTRATE	#12 X 1-1/2" PFH SELF DRILL	STEEL	VARIES	
45	FASTENER	STEEL REINFORCEMENT ATTACHMENT	1/4-20 X 2" BOLT WITH WASHER AND NUT	STEEL	VARIES	
46	FASTENER	THROUGH BOLT	1/4-20 X 3" BOLT WITH WASHER AND NUT	STEEL	VARIES	USED @ HORIZONTALS
47	NG16	DRY GLAZE INTERIOR SPACER GASKET	0.260 SPACE	EPDM	VARIES	MEETS ASTM C-864
48	PW658	CORNER FACE COVER	4.064 X .500 X 0.078	6063-T6 ALUM	CORAL INDUSTRIES, INC.	
49	PW654	CORNER PRESSURE BAR	3.954 X 3.954 X .125	6063-T6 ALUM	CORAL INDUSTRIES, INC.	
50	SP214	CORNER MULLION CAP	4.000 X 3.826 X 0.048	6063-T6 ALUM	CORAL INDUSTRIES, INC.	LOCATE @ TOP AND BOTTOM OF VERTICAL CORNER MULLION
51	PW211	CORNER SPLICE SLEEVE	5.042 X 1.064 X .125	6063-T6 ALUM	CORAL INDUSTRIES, INC.	
52	PW207	MULLION SPLICE SLEEVE	4.735 X 2.196 X .125	6063-T6 ALUM	CORAL INDUSTRIES, INC.	
53		NYLATRON PAD	VARIES	NYLATERON	VARIES	@ ANCHORS
54	NBCAP	STEEL ANGLE	6" X 4" X .25"	A36 STEEL	VARIES	
55	NBCAP	CORNER ANGLE	8.0625" X 4" X .25"	A36 STEEL	VARIES	

(CONTINUED ON SHEET 21)


  
 ELIZABETH A. BROADWAY  
 PROFESSIONAL ENGINEER  
 FLORIDA REGISTRATION NO. 38558


**BROADWAY ENGINEERING, P.A.**  
 CIVIL, MECHANICAL, STRUCTURAL AND BUILDING DESIGN  
 See Us At [www.Broadway-Eng.Com](http://www.Broadway-Eng.Com)  
**1335 W. Cass Street**  
**Tampa, Florida 33606 813-251-9244**  
 Fax 813-251-9330 Bus. Email: [Info@Broadway-Eng.Com](mailto:Info@Broadway-Eng.Com)  
 Cadd. Email: [DGorr@Broadway-Eng.Com](mailto:DGorr@Broadway-Eng.Com)  
 BE-4435 Certificate of Authorization No. 4599

DRAWINGS FOR FLORIDA  
PRODUCT APPROVAL

PRODUCT APPROVAL DRAWINGS  
 PW257 IMPACT-RESISTANT  
 CURTAIN WALL SYSTEM  
 PROTOCOLS: TAS 201-202-203  
 BILL OF MATERIALS

DATE	7/8/15	
DRAWN	CHECKED	APPROVED
MLL	WS	EAB
PROJECT NO.		
DRAWING NO.	PW257_02	
SHEET	20 OF 23	


  
**Coral**  
 Architectural Products  
 3010 RICE MINE ROAD TUSCALOOSA, AL 35408  
 PHONE: 800-772-7737 FAX: 800-255-7320

DESCRIPTION

DATE

REV

BY




## BILL OF MATERIALS


ITEM NO.	P/N	DESCRIPTION	DIMENSIONS	MATERIAL	MANUFACTURER	3NOTES
56	FASTENER	1/2"x4-1/2" WEDGE ANCHOR	.540 X 4.500	STEEL	POWERS	
57	FASTENER	1/2"x4" WEDGE BOLT	.540 X 4.00	STEEL	VARIES	
58	FASTENER	3/8"x5" WEDGE BOLT AT HORIZONTAL ONLY	.375 X 5.00	STEEL	POWERS	
59	FASTENER	1/2"-13X2" HHB	.500 X 2.000	STEEL	VARIES	
60	FASTENER	1/2"-13X4" HHB	.500 X 4.500	STEEL	POWERS	
61	FASTENER	3/4-10 X 4-1/2" GRD 5 BOLT HEX NUT AND WASHER	.75 X 4.500	STEEL	POWERS	
62	FASTENER	3/4-10 X 1-1/2" BOLT	.75 X 1.500	STEEL	POWERS	
63	FASTENER	1/4-20 X 2" BOLT WITH NUT AND WASHER	.250 X 2.000	STEEL	POWERS	
64	FASTENER	1/4-20 X 1-1/2" BOLT WITH NUT AND WASHER	.250 X 1.500	STEEL	POWERS	
65	FASTENER	1/4" TAPCON	.250 X 1.500	STEEL	VARIES	
66	FL212	TUBE DOOR HEADER FOR COC	1.750 X 4.500 X .094	6063-T6 ALUM	CORAL INDUSTRIES, INC.	
67	DS202	DOOR STOP FOR COC	1.188 X 2.000 X .180	6063-T6 ALUM	CORAL INDUSTRIES, INC.	



Architectural Products  
 3010 RICE MINE ROAD, TUSCALOOSA, AL 35406  
 PHONE: 800-772-7737 FAX: 800-255-7320

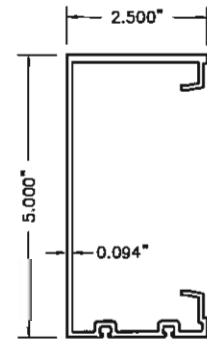
PRODUCT APPROVAL DRAWINGS  
 PW257 IMPACT-RESISTANT  
 CURTAIN WALL SYSTEM  
 PROTOCOLS: TAS 201-202-203  
 BILL OF MATERIALS

  
 ELIZABETH A. BROADWAY  
 PROFESSIONAL ENGINEER  
 FLORIDA REGISTRATION NO. 38558

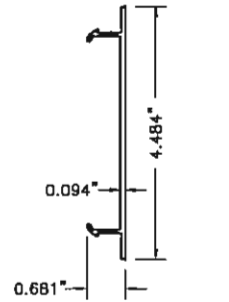

**BROADWAY ENGINEERING, P.A.**  
 CIVIL, MECHANICAL, STRUCTURAL AND BUILDING DESIGN  
 See Us At [www.Broadway-Eng.Com](http://www.Broadway-Eng.Com)  
**1335 W. Cass Street**  
**Tampa, Florida 33606 813-251-9244**  
 Fax 813-251-9330 Bus. Email: [Info@Broadway-Eng.Com](mailto:Info@Broadway-Eng.Com)  
 Cadd. Email: [DGarr@Broadway-Eng.Com](mailto:DGarr@Broadway-Eng.Com)  
 BE-4435 Certificate of Authorization No. 4599

DRAWINGS FOR FLORIDA  
PRODUCT APPROVAL

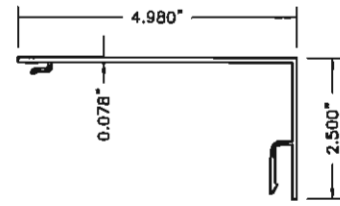
DATE 7/8/15		
DRAWN MLL	CHECKED WS	APPROVED EAB
PROJECT NO.		
DRAWING NO. PW257_02		
SHEET 21 OF 23		



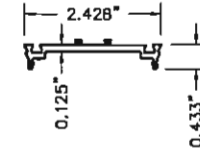
14 B.G. MULLION



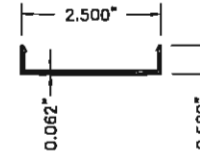
15 OPEN BACK MULLION FILLER



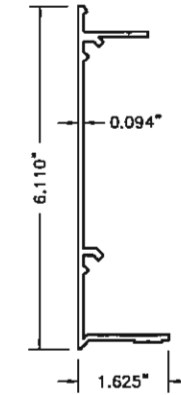
16 HEAD/SILL/HORIZONTAL TRIM



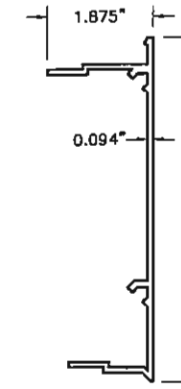
17 PRESSURE BAR



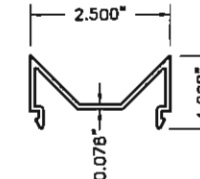
18 FACE COVER



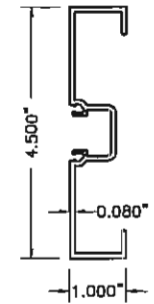
19 FEMALE HALF 90° CORNER



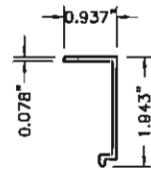
20 MALE HALF 90° CORNER



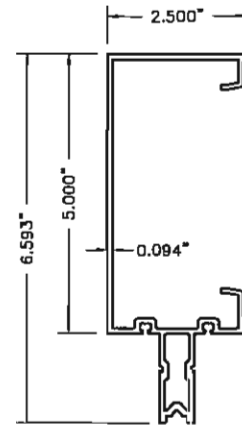
21 INTERIOR CORNER TRIM



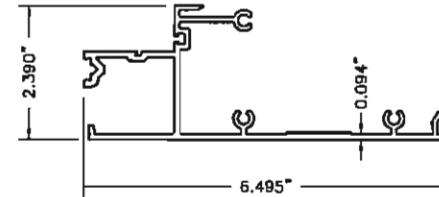
22 DOOR SUBFRAME



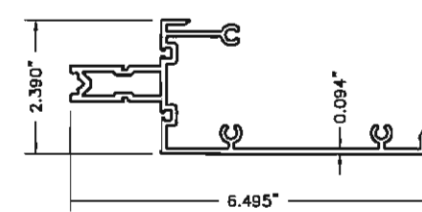
23 POCKET FILLER



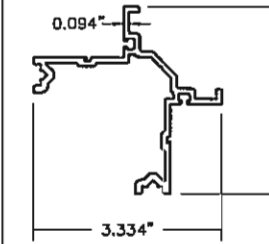
24 VERTICAL MULLION



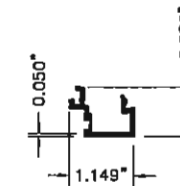
25 HEAD/SILL



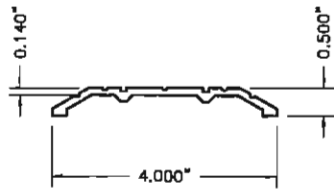
26 INTERMEDIATE HORIZONTAL



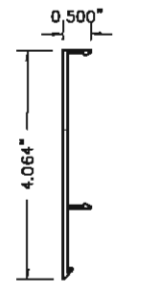
27 GLAZING TEE 90° CORNER



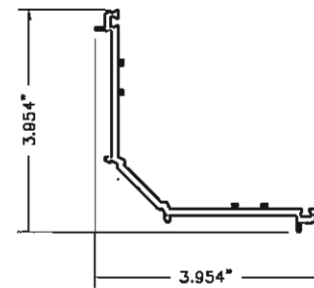
28 DOORFRAME STOP



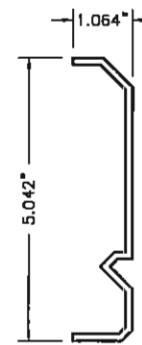
29 THRESHOLD



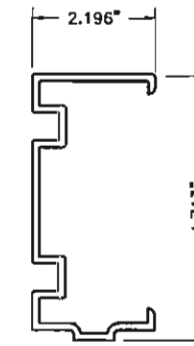
48 CORNER FACE COVER



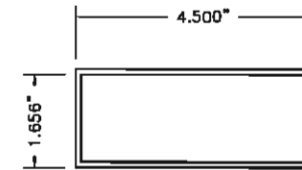
49 CORNER PRESSURE BAR



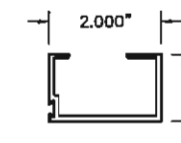
51 CORNER SPLICE



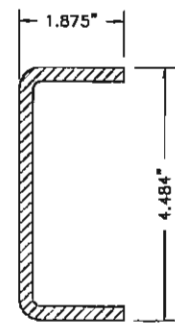
52 SPLICE SLEEVE



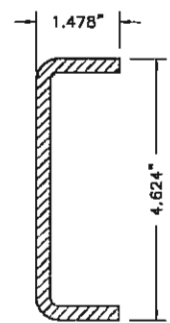
66 TUBE/HEADER



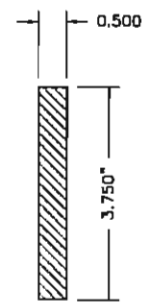
67 DOOR STOP



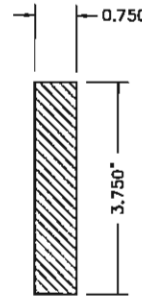
31 STEEL REINFORCEMENT



32 STEEL REINFORCEMENT



33 STEEL REINFORCEMENT



34 STEEL REINFORCEMENT

ELIZABETH A. BROADWAY  
 PROFESSIONAL ENGINEER  
 FLORIDA REGISTRATION NO. 38558

**BROADWAY ENGINEERING, P.A.**  
 CIVIL, MECHANICAL, STRUCTURAL AND BUILDING DESIGN  
 See Us At [www.Broadway-Eng.Com](http://www.Broadway-Eng.Com)  
 1335 W. Cass Street  
 Tampa, Florida 33606 813-251-9244  
 Fax 813-251-9330 Bus. Email: [Info@Broadway-Eng.Com](mailto:Info@Broadway-Eng.Com)  
 Cadd. Email: [DCarr@Broadway-Eng.Com](mailto:DCarr@Broadway-Eng.Com)  
 BE-4435 Certificate of Authorization No. 4599

**Coral**  
 Architectural Products  
 3010 RICE MINE ROAD, TUSCALOOSA, AL 35406  
 PHONE: 800-772-7737 FAX: 800-255-7320

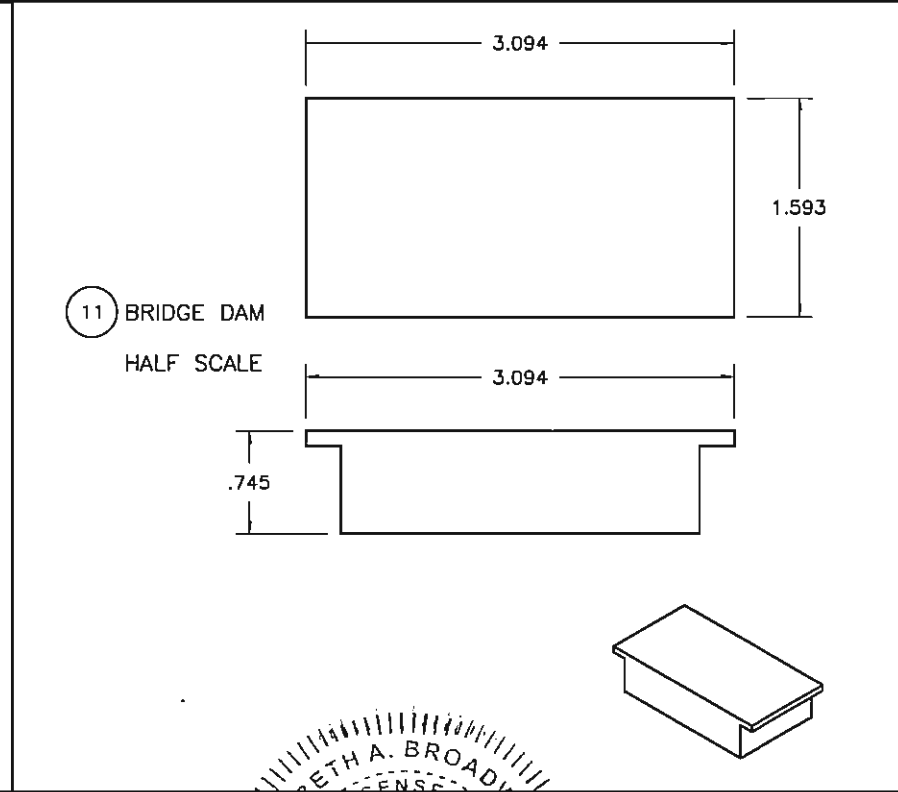
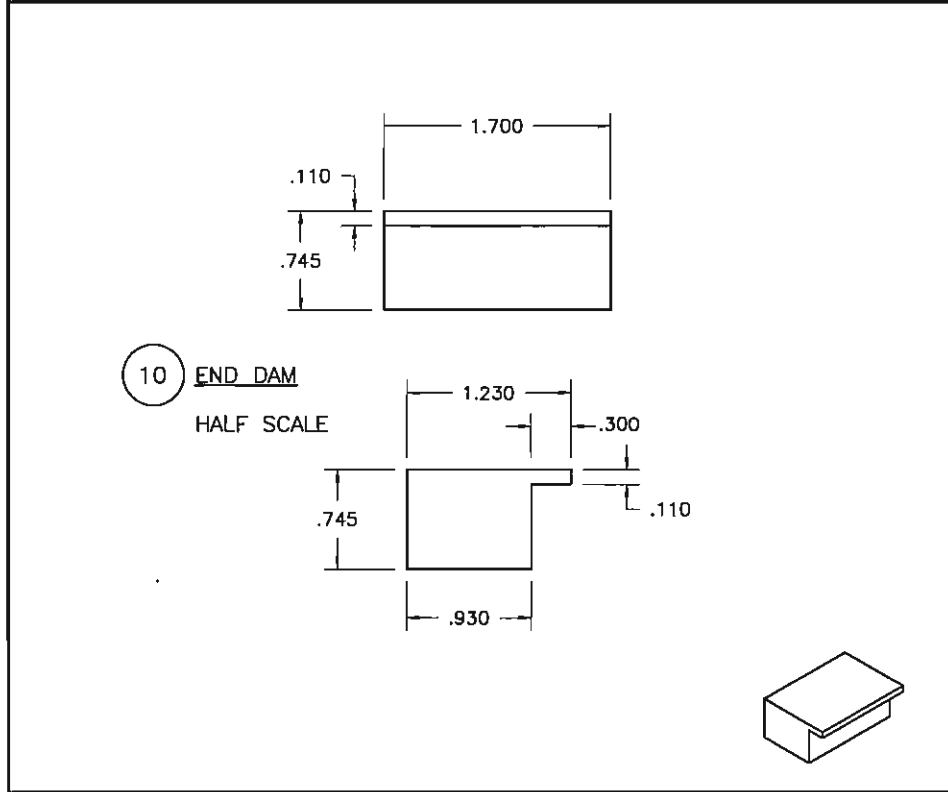
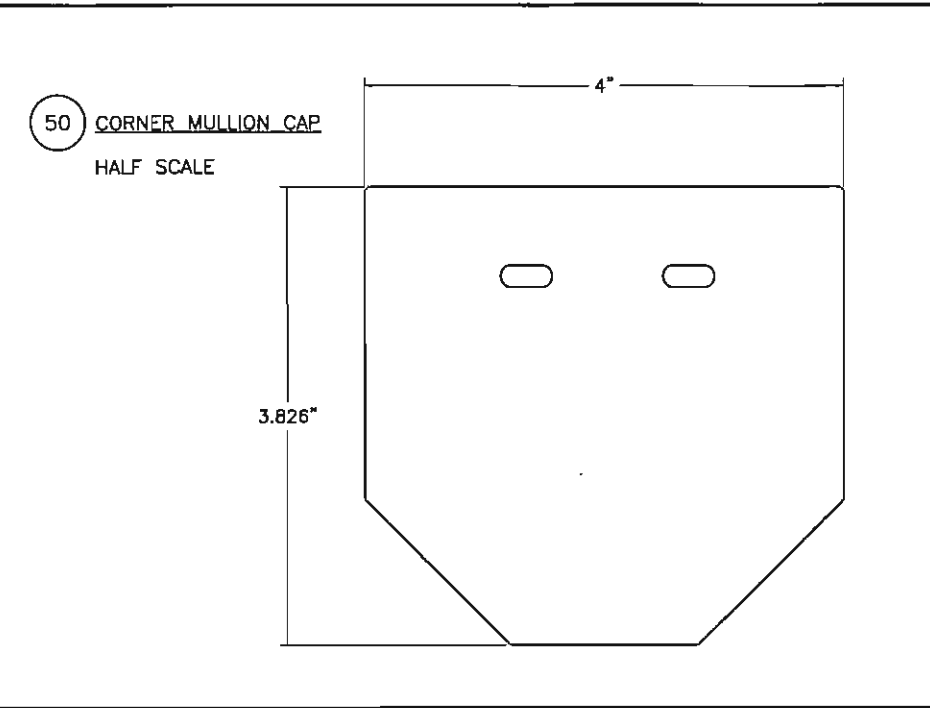
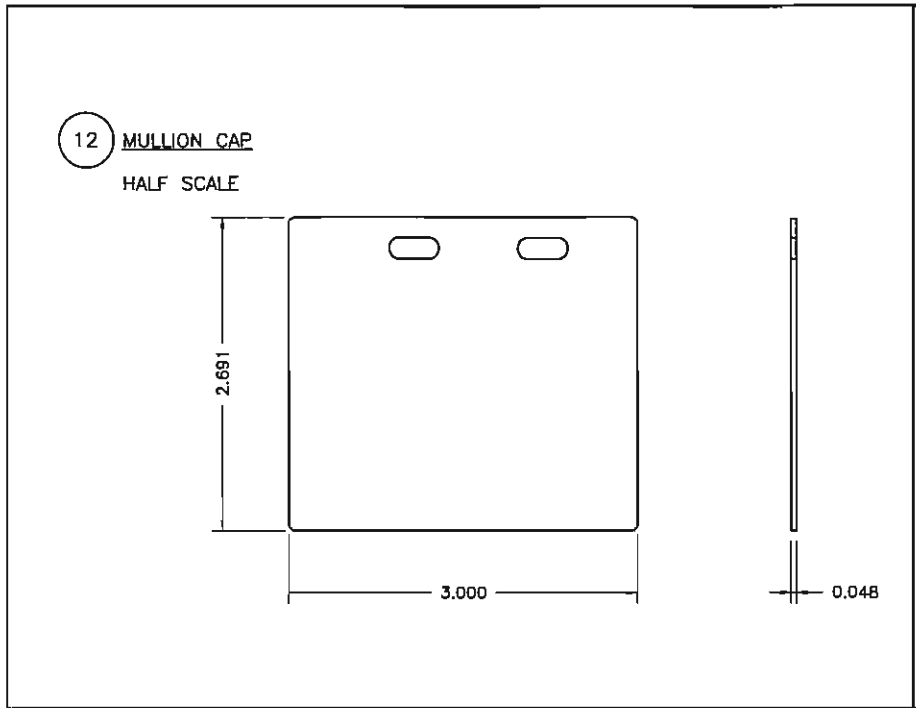
PRODUCT APPROVAL DRAWINGS  
 PW257 IMPACT-RESISTANT  
 CURTAIN WALL SYSTEM  
 PROTOCOLS: TAS 201-202-203  
 DIE DRAWINGS

DATE 7/8/15  
 DRAWN MLL CHECKED W5 APPROVED EAB  
 PROJECT NO.  
 DRAWING NO. PW257\_02  
 SHEET 22 OF 23

DRAWINGS FOR FLORIDA  
 PRODUCT APPROVAL



1 BULB GASKET		FULL SCALE
2 EXT. GLAZING GASKET		FULL SCALE
3 EXT. PERIMETER GASKET		FULL SCALE
4 PRESSURE BAR GASKET (ISOLATOR)		FULL SCALE
5 INT. SPACER GASKET		FULL SCALE
9 SETTING BLOCK		FULL SCALE
47 INT. SPACER GASKET		FULL SCALE



*Elizabeth A. Broadway*  
No. E-38558  
ELIZABETH A. BROADWAY  
PROFESSIONAL ENGINEER  
FLORIDA REGISTRATION NO. 08558

**B BROADWAY ENGINEERING, P.A.**  
CIVIL, MECHANICAL, STRUCTURAL AND BUILDING DESIGN  
See Us At [www.Broadway-Eng.Com](http://www.Broadway-Eng.Com)  
1335 W. Cass Street  
Tampa, Florida 33606 813-251-9244  
Fax 813-251-9330 Bus. Email: [Info@Broadway-Eng.Com](mailto:Info@Broadway-Eng.Com)  
Cadd. Email: [DGarr@Broadway-Eng.Com](mailto:DGarr@Broadway-Eng.Com)  
BE-4435 Certificate of Authorization No. 4599

DRAWINGS FOR FLORIDA  
PRODUCT APPROVAL

REV	BY	DATE	DESCRIPTION

*Coral*  
Architectural Products  
3010 RICE MINE ROAD, TUSCALOOSA, AL 35408  
PHONE: 800-772-7737 FAX: 800-255-7320

PRODUCT APPROVAL DRAWINGS  
PW257 IMPACT-RESISTANT  
CURTAIN WALL SYSTEM  
PROTOCOLS: TAS 201-202-203  
DIE DRAWINGS

DATE	7/8/15
DRAWN	MLL
CHECKED	WS
APPROVED	EAB
PROJECT NO.	
DRAWING NO.	PW257_02
SHEET	23 OF 23