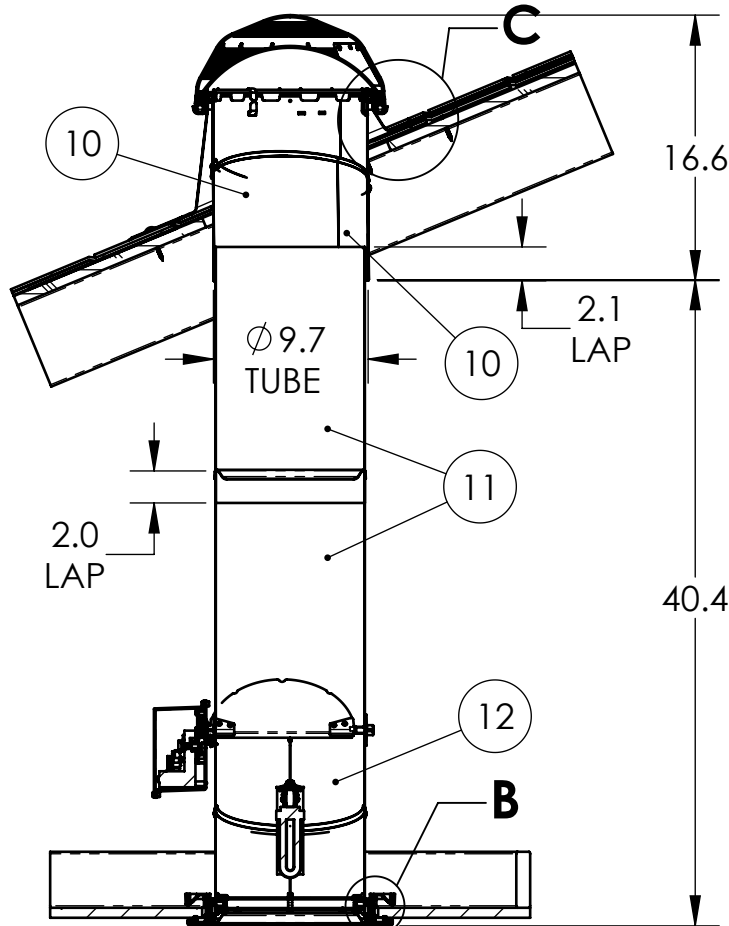
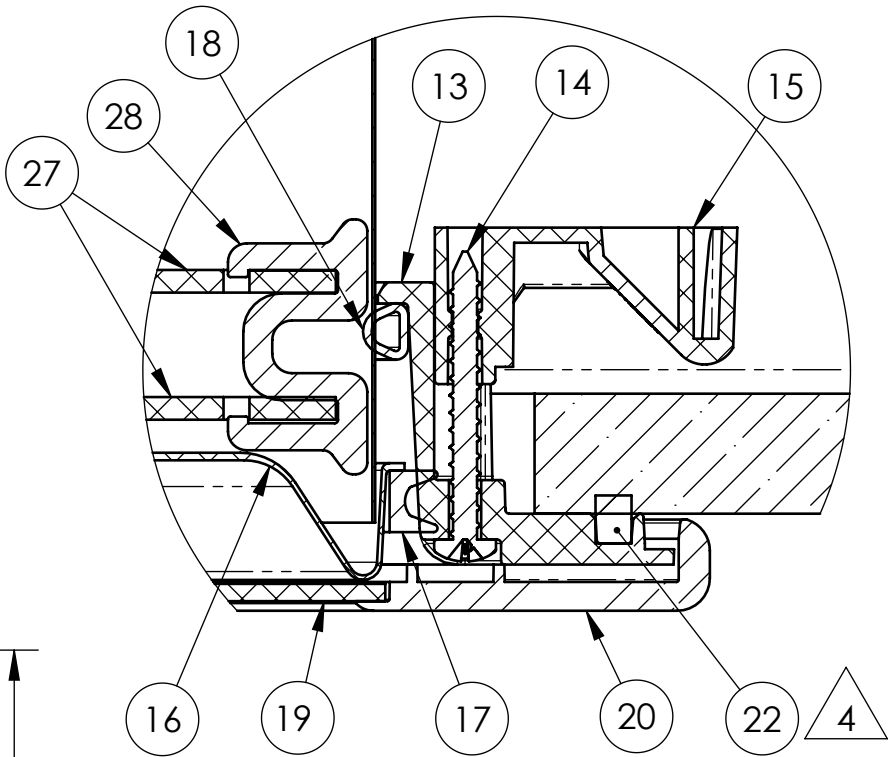


FLASHING SHOWN WITH OPTIONAL
2"-48" TALL TURRET EXTENSION

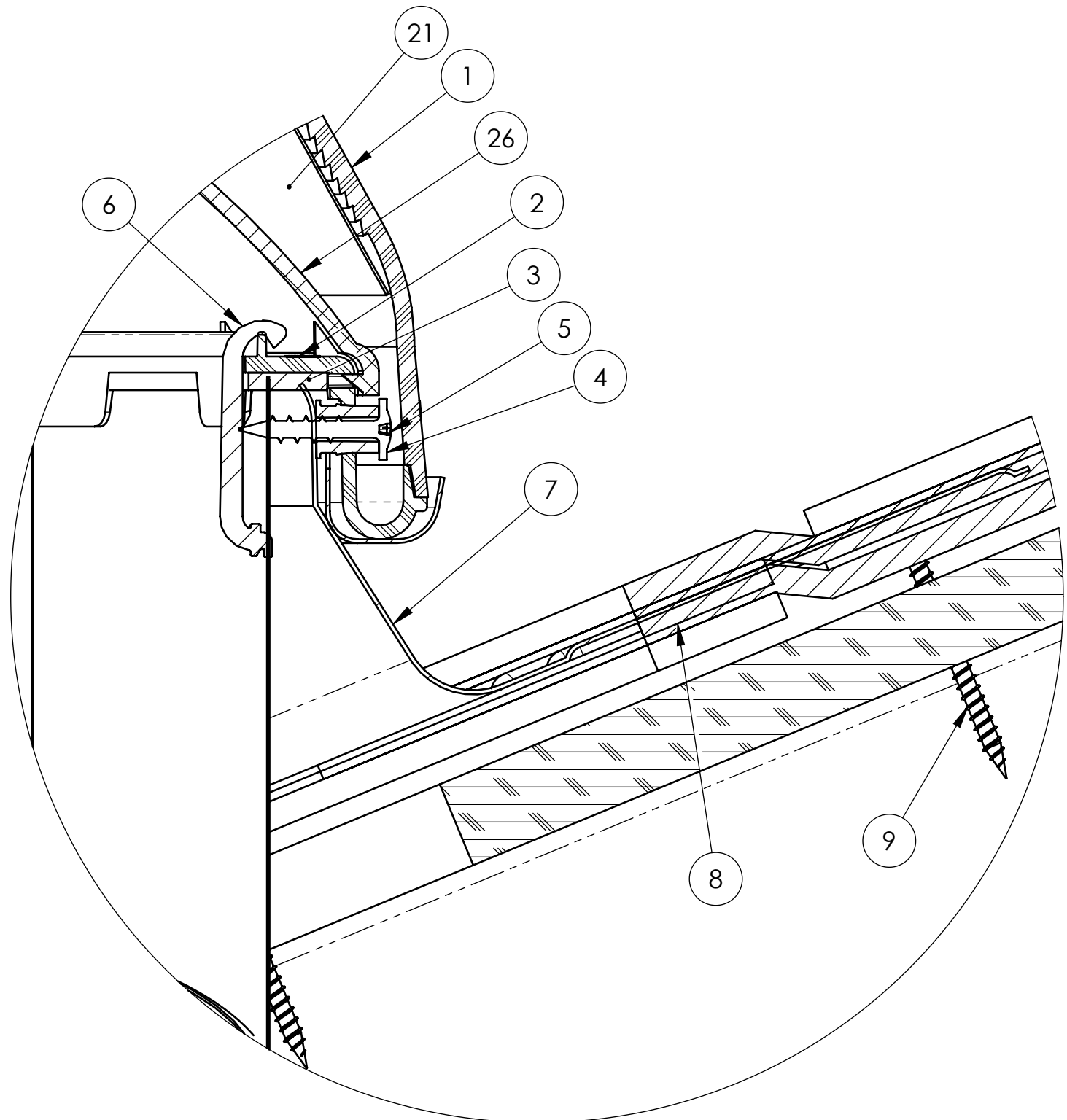


SECTION A-A



DETAIL B
SCALE 1 : 1

- NOTES:
1. STRUCTURAL ELEMENTS (PLYWOOD, RAFTERS, DRYWALL ETC.) BY OTHERS & SHOWN FOR REFERENCE ONLY
 2. ALL TUBE JOINTS & SEAMS TAPED WITH 2" FOIL TAPE (NOT SHOWN)
 3. SEE PAGE 3 FOR ALTERNATE DIFFUSER CONFIGURATIONS
 4. ITEM #22; RECTANGULAR FOAM OR SEALANT BEAD




DETAIL C
SCALE 1 : 1

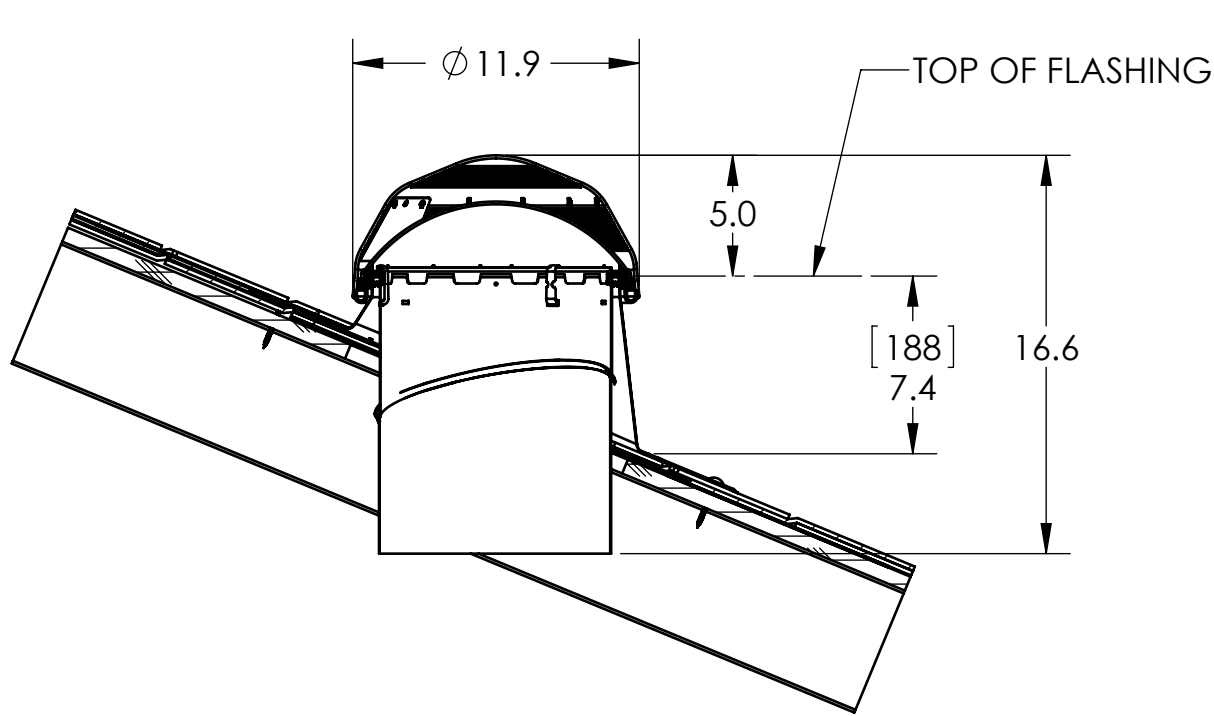
ITEM NO.	QTY.	PART NO.	DESCRIPTION	MATERIAL
1	1	410720	OUTER DOME 160 DS	PMMA
2	1	410650	DOMERING 160 DS	PMMA
3	1	600610	FOAM SEAL RECTANGULAR 1/8" X 9/16"	CLOSED CELL FOAM(VARIOUS)
4	4	410730	DOMERING SPACER	POLYAMIDE
5	4	700240	SCREW #8 X 1" MOD TR HD	STEEL
6	3	410750	TOP TUBE CLIP	PMMA
7	1	VARIES*	FLASHING	STEEL
8	1	700280/700300	SEALANT	URETHANE
9	8	700480	SCREW #10 X 2" SMS, MOD TRUS PHIL	STEEL
10	1	302230	TOP TUBE 160 DS	ALUMINUM LAMINATE
11	2	301800/301830	TUBE 16"/24" EXTENSION 160 DS	ALUMINUM LAMINATE
12	1	302110	BOTTOM TUBE 160 DS	ALUMINUM LAMINATE
13	1	410215	CEILING RING 160 DS	PMMA
14	4	700450	SCREW #8 X 1.5" SMS PHIL PAN AB THREAD	STEEL
15	4	410220	CLAMP	POLYAMIDE
16	1	421335	160 DS NATURAL EFFECT LENS	PET
17	1	600290	160 DS NATURAL EFFECT LENS SEAL	EPDM FOAM
18	1	600445	D SEAL HOLLOW	EPDM FOAM
19	1	410330/420060	DIFFUSER PANEL	PMMA, PC
20	1	410320	DRESSS RING 160 DS	PMMA
21	1	300220	LIGHT TRACKER REFLECTOR 160 DS	ALUMINUM LAMINATE
22	1	600620	FOAM SEAL RECTANGULAR 3/16" X 1/4"	CLOSED CELL FOAM
	1	-	ALTERNATE (PROVIDED BY USER)	ACRYLIC SEALANT (VARIOUS)

OPTIONAL COMPONENTS				
ITEM NO.	QTY.	PART NO.	DESCRIPTION	MATERIAL
23	1	500030, 501100	LIGHT KIT (SBCFL, 4-PIN)	
24	1	570001	DAYLIGHT DIMMER 160 DS	
25	1	VARIES**	TURRET EXTENSION	STEEL
26	1	410710	160 DS DOME SHOCK INNER	PMMA
27	2	420250	160 DS INSULATION PANEL	PMMA
28	4	420270	INSULATION PANEL CLIP	PMMA

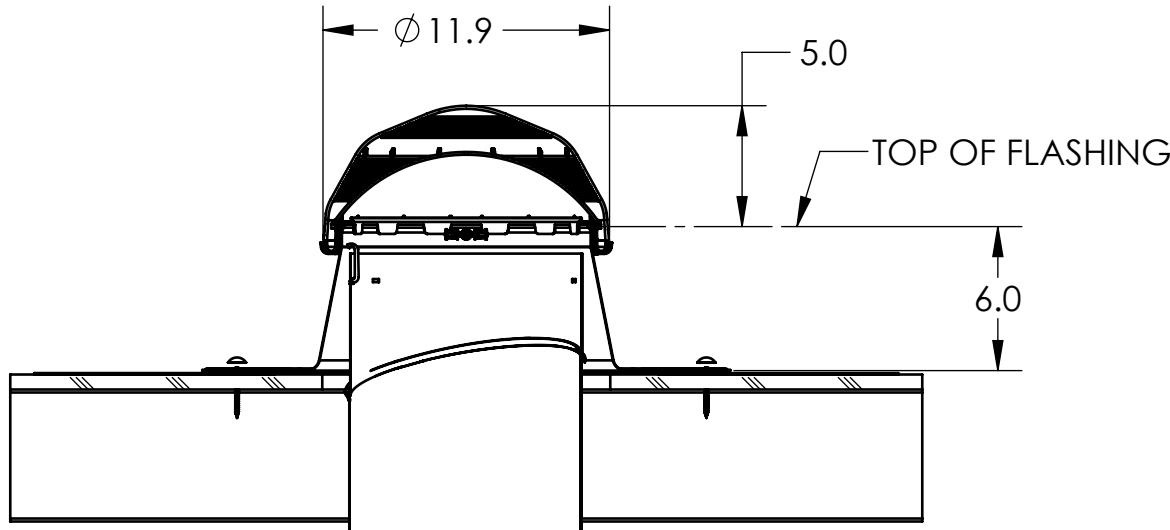
* PN'S 200640, 230485, 200591, 230620
** PN'S 230450, 230750, 230500, 230510, 230520, 230530

UNLESS OTHERWISE SPECIFIED:		PROPRIETARY AND CONFIDENTIAL		<div> SOLATUBE 2210 OAK RIDGE WAY VISTA, CALIFORNIA 92081-8341 PH (760) 597-4400</div>				
TOLERANCES ANGULAR: ±0.5° INCH .X ± .1 .XX ± .01 .XXX ± .005 MILLIMETER [.X] ± 2.5 [.XX] ± .25 [.XXX] ± .12		THE INFORMATION CONTAINED IN THIS DRAWING IS THE SOLE PROPERTY OF SOLATUBE. ANY REPRODUCTION IN PART OR AS A WHOLE WITHOUT THE WRITTEN PERMISSION OF SOLATUBE IS PROHIBITED.			TITLE: 160 DS (10") SOLATUBE ASSY PITCHED FLASHING			
MATERIAL -- --							DRAWN BY STEVENS	DATE 2/16/09
FINISH --							CHECKED BY --	DATE --
DO NOT SCALE DRAWING							APPROVED BY --	DATE --
				SIZE	DWG. NO. 160-PF-HC-STD	REV 3		
				SCALE: 1:12		SHEET 1 OF 7		

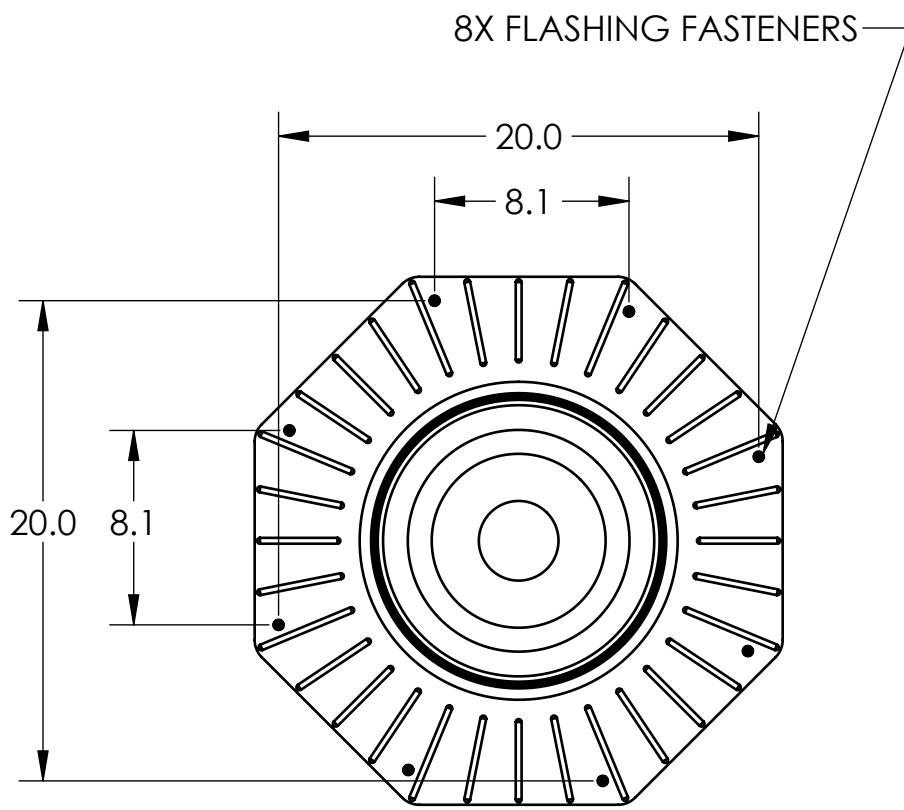
REVISIONS					
REV.	ECO	DATE	REVISED	CHECKED	APPROVED
-	-	See Sheet1	-	-	-



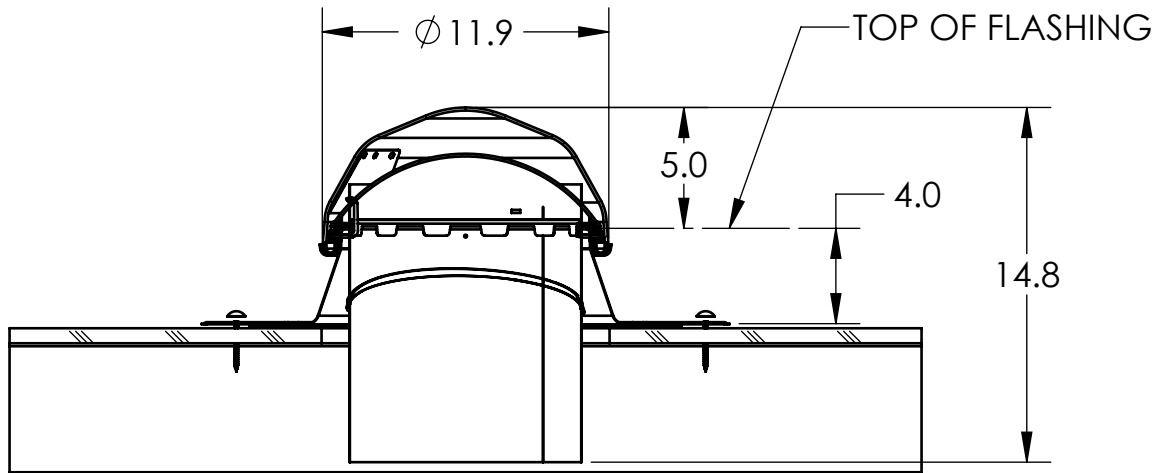
PITCHED



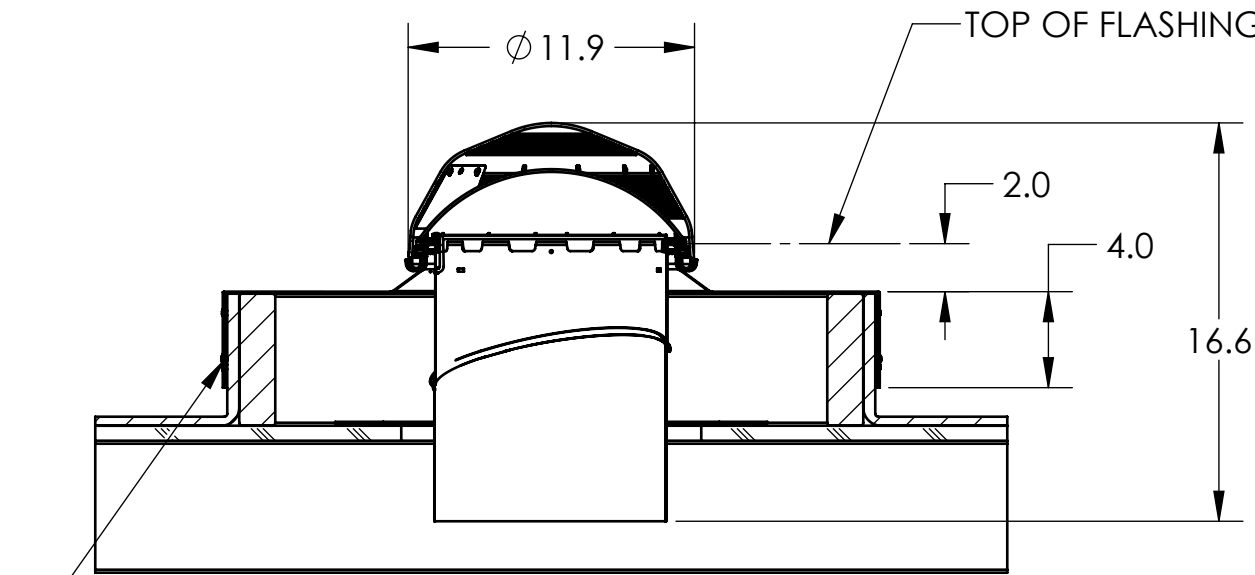
FLAT 6"



FLASHING FASTENER SPACING
FLAT 4", FLAT 6" & PITCHED



FLAT 4"



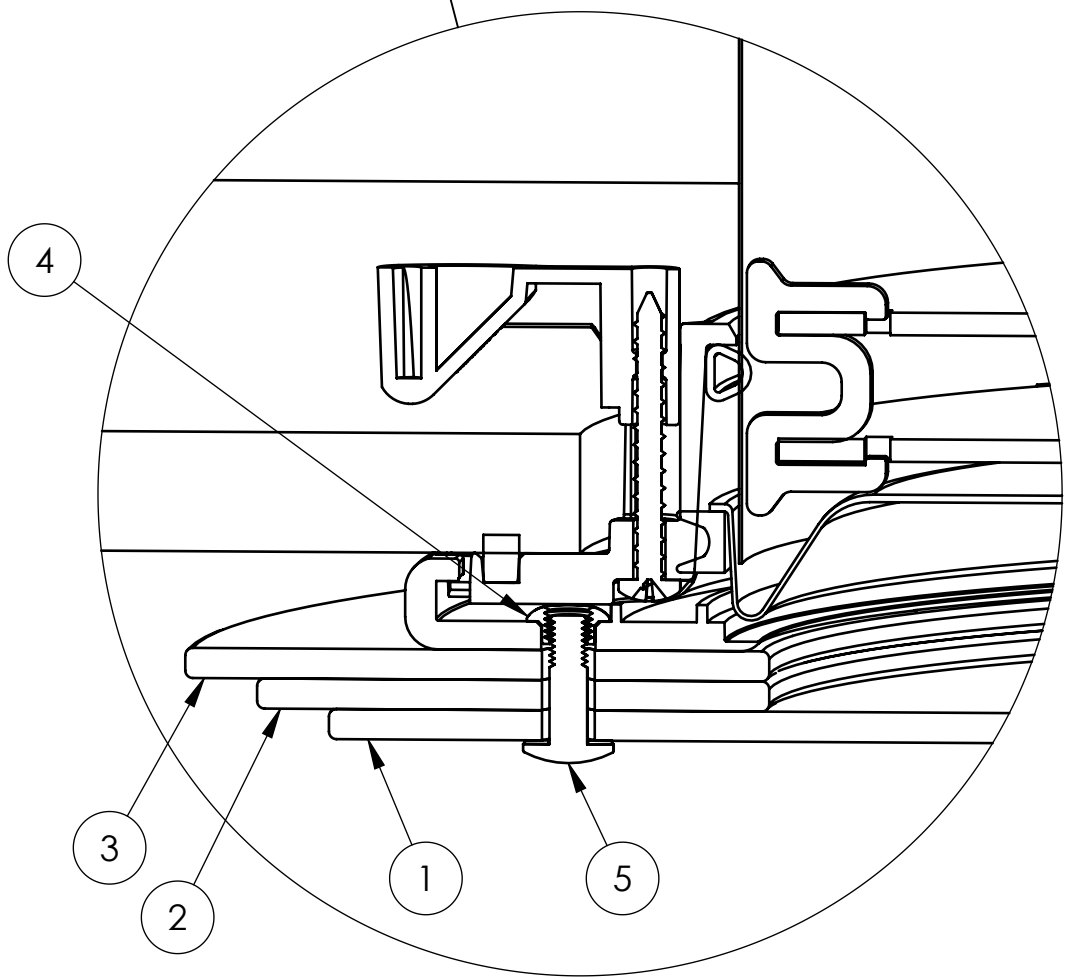
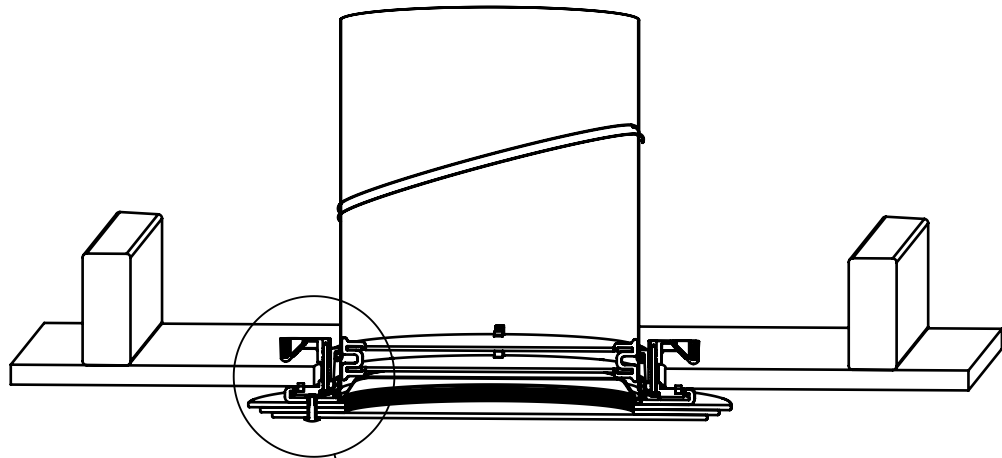
CURB

8X FLASHING FASTENERS,
2X FASTENERS PER SIDE

GLASS DISTRACTIONS FOR
160 DS SOLATUBE

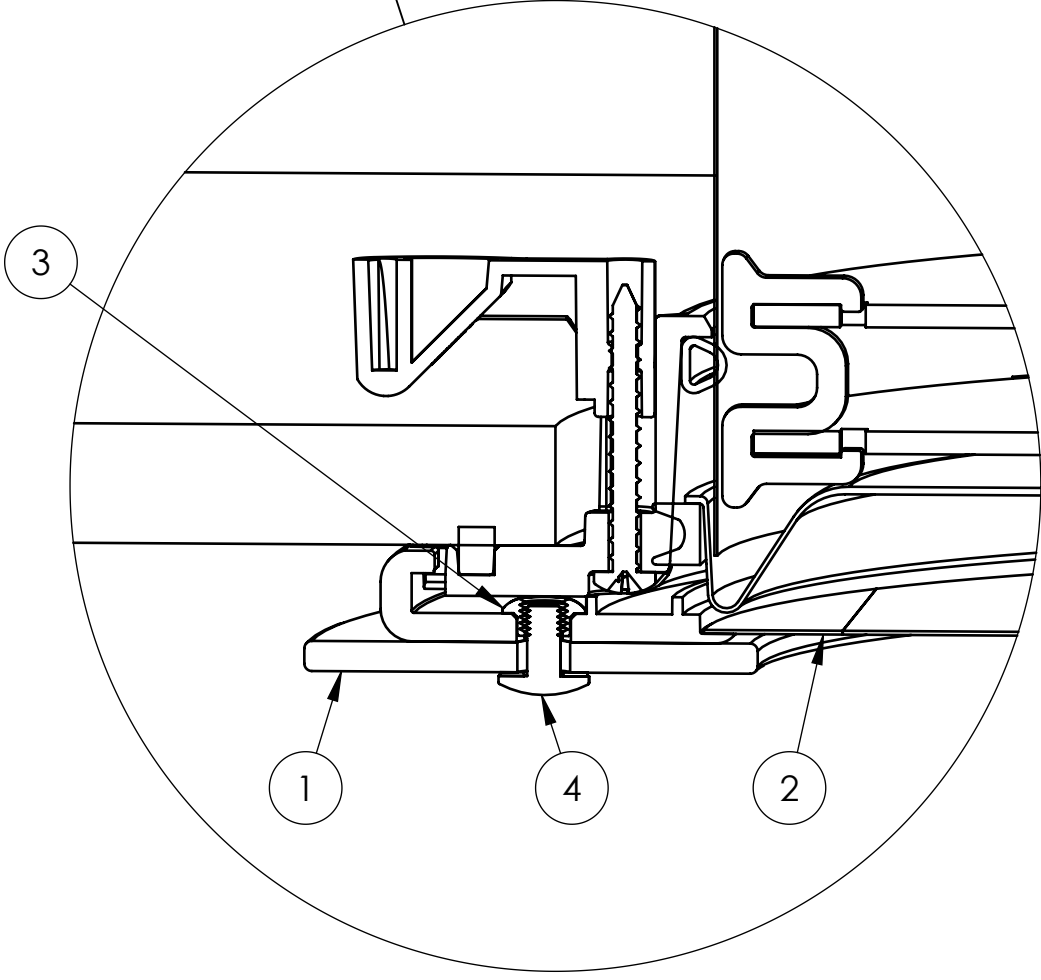
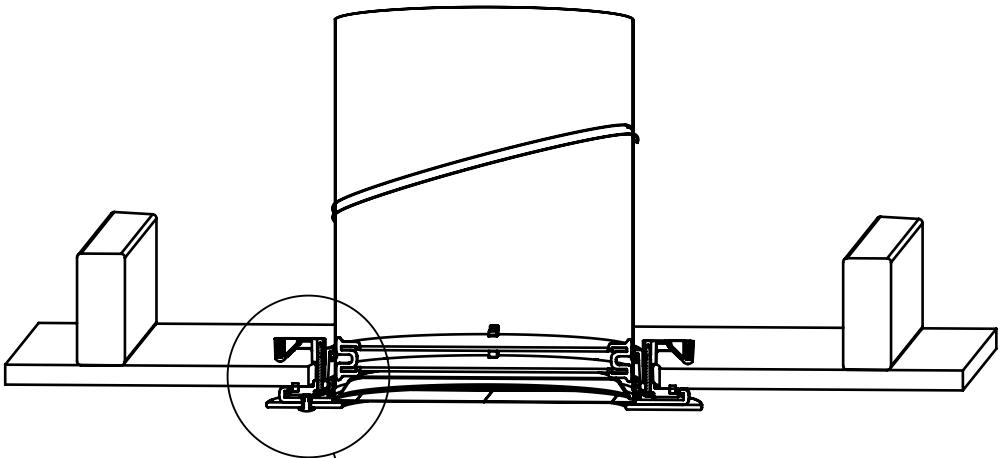
REVISIONS					
REV.	ECO	DATE	REVISED	CHECKED	APPROVED
-	-	See Sheet1	-	-	-

'TIER DROP' DIFFUSER
ASSEMBLY



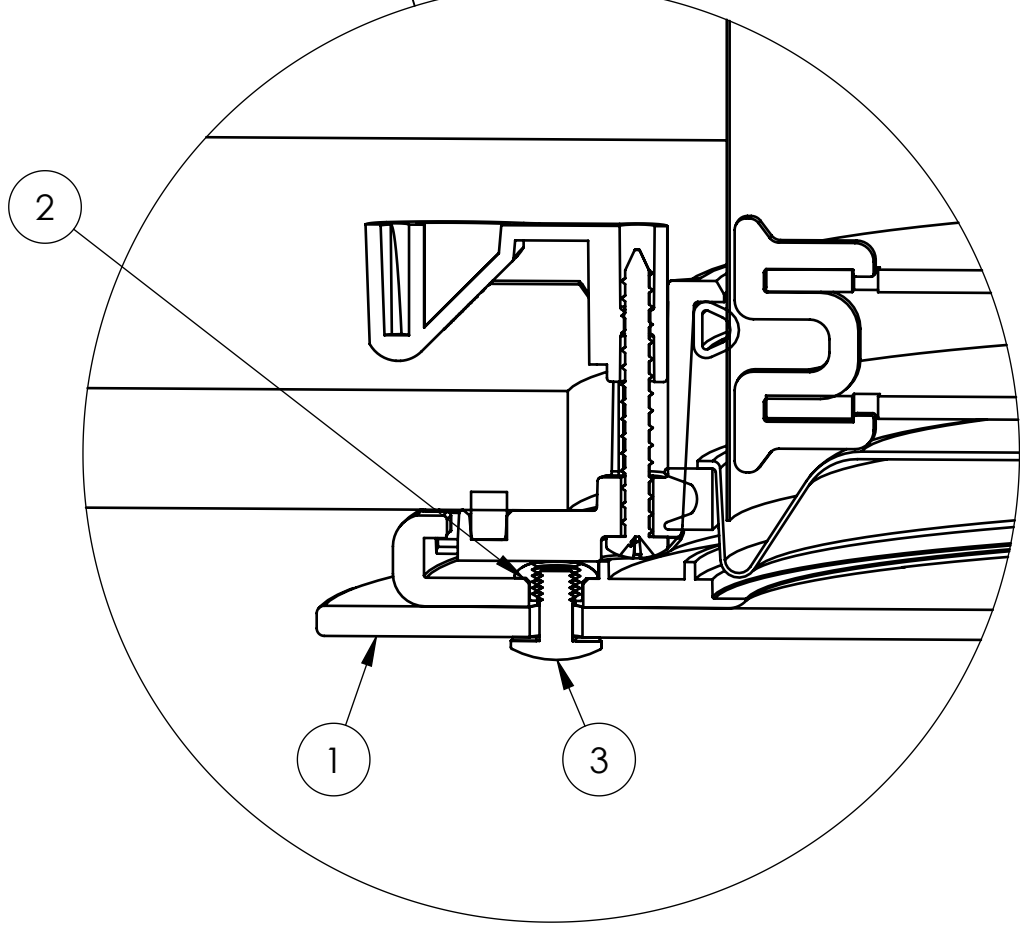
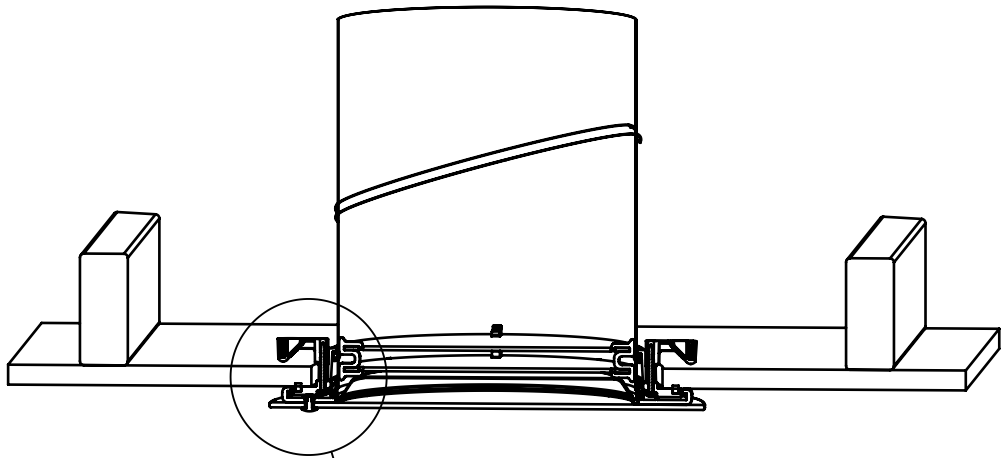
TIER DROP DIFFUSER ASSEMBLY COMPONENTS				
ITEM NO.	QTY.	PART NO.	DESCRIPTION	MATERIAL
1	1	400165	GLASS DISK 160 DS	TEMPERED GLASS
2	1	400166	MIDDLE GLASS RING 160 DS	TEMPERED GLASS
3	1	400167	TOP GLASS RING 160 DS	TEMPERED GLASS
4	3	700915	SPANNER NUT	STAINLESS STEEL
5	3	700925	SHOULDER SCREW M5	STAINLESS STEEL

'OPTIVIEW' DIFFUSER
ASSEMBLY



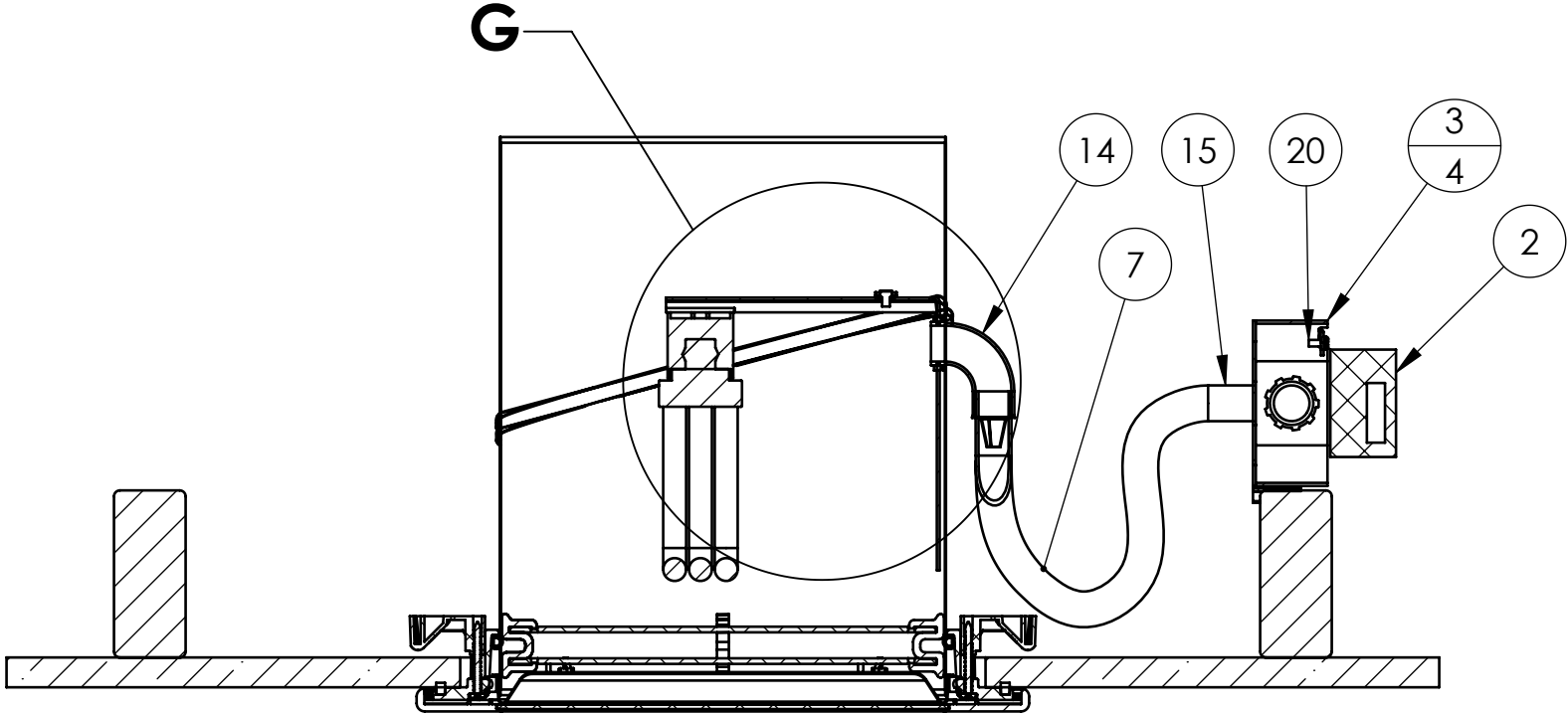
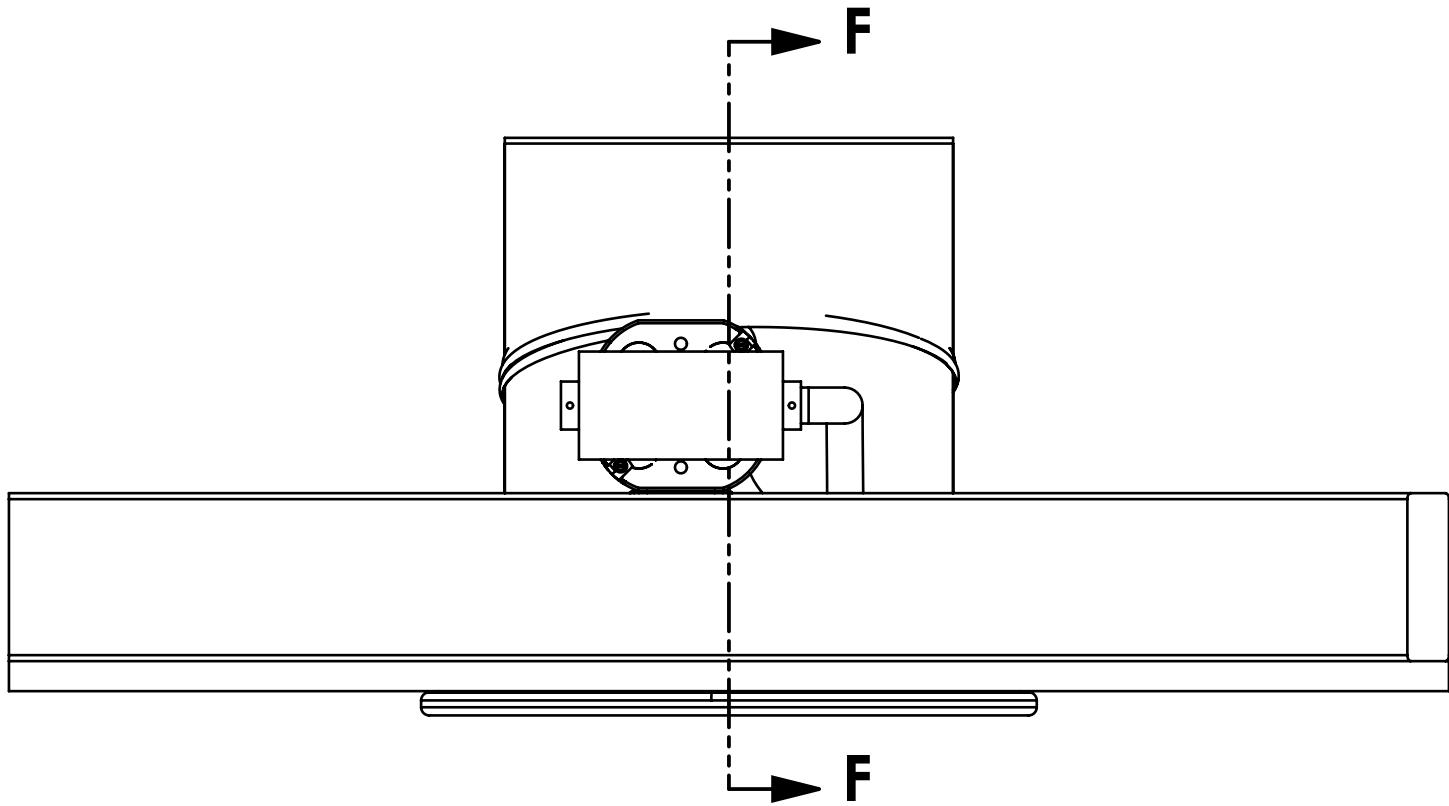
OPTIVIEW DIFFUSER ASSEMBLY COMPONENTS				
ITEM NO.	QTY.	PART NO.	DESCRIPTION	MATERIAL
1	1	400160	GLASS DISK CENTER CLEAR160	TEMPERED GLASS
2	1	420060	DIFFUSER 160 PANEL OPTIVIEW	PC
3	3	700915	SPANNER NUT	STAINLESS STEEL
4	3	700925	SHOULDER SCREW M5	STAINLESS STEEL

'JUST FROST' DIFFUSER
ASSEMBLY



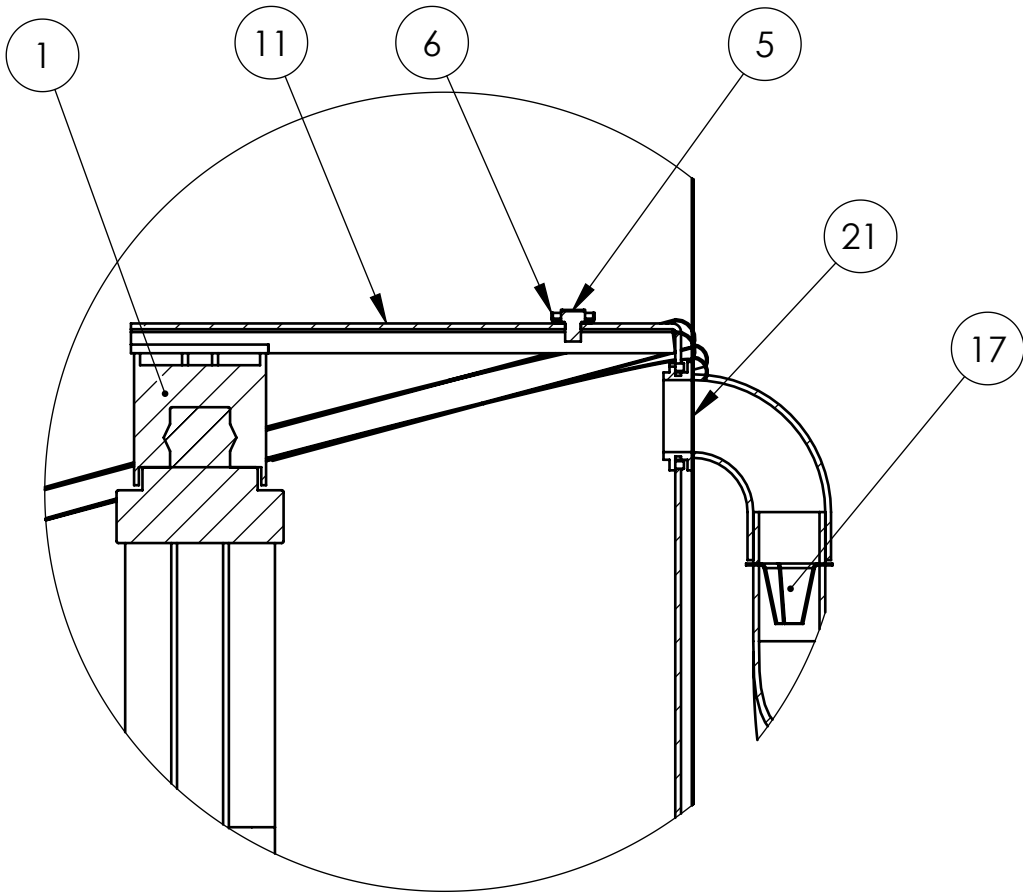
JUST FROST DIFFUSER ASSEMBLY COMPONENTS				
ITEM NO.	QTY.	PART NO.	DESCRIPTION	MATERIAL
1	1	400165	GLASS DISK 160 DS	TEMPERED GLASS
2	3	700915	SPANNER NUT	STAINLESS STEEL
3	3	700925	SHOULDER SCREW M5	STAINLESS STEEL

TYPICAL SOLATUBE
LIGHT KIT ASSEMBLY



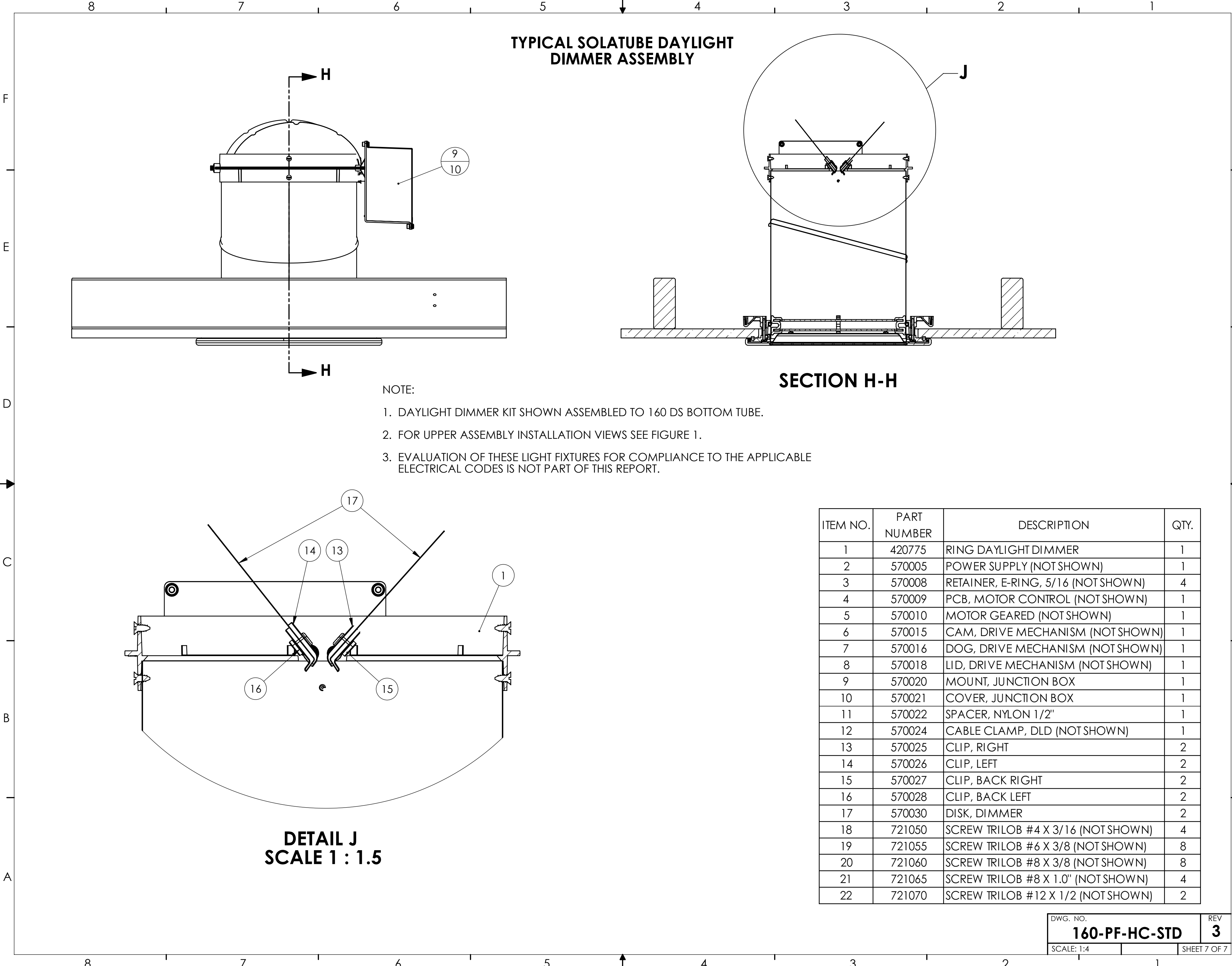
SECTION F-F

- NOTE:
- 1. UNIVERSAL LIGHT KIT SHOWN ASSEMBLED TO 160 DS BOTTOM TUBE.
 - 2. FOR UPPER ASSEMBLY INSTALLATION VIEWS SEE FIGURE 1.
 - 3. EVALUATION OF THESE LIGHT FIXTURES FOR COMPLIANCE TO THE APPLICABLE ELECTRICAL CODES IS NOT PART OF THIS REPORT.



DETAIL G
SCALE 1 : 2

ITEM NO.	PART NUMBER	DESCRIPTION	QTY.
1	500110	LAMP HOLDER 4-PIN	1
2	500120	BALLAST, ELECTRIC 26W	1
3	500550	JUNCTION BOX 4" W/BRACKET	1
4	500560	JUNCTION BOX 4" COVER	1
5	500650	SCREW #8-32 X 1/4"	1
6	500660	WASHER #8 GROUND CUP	1
7	500910	CONDUIT FLEXIBLE 3/8" X 48"	1
8	501040	WIRE LEAD BLACK 18 AWG 62" (NOT SHOWN)	1
9	501050	WIRE LEAD WHITE 18 AWG 62" (NOT SHOWN)	1
10	501060	WIRE LEAD GREEN 18 AWG 62" (NOT SHOWN)	1
11	501440	BRACKET CFL 26 WATT	1
12	501470	ZIP TIE, HELICAL WRAP (NOT SHOWN)	1
13	501500	WASHER FENDER 1/4" X 1-1/4" (NOT SHOWN)	1
14	500230	CONNECTOR 90 DEG 3/8	1
15	500240	CONNECTOR STRAIGHT 3/8	1
16	500530	SCREW HEX #8 X .75" (NOT SHOWN)	4
17	500540	BUSHING ANTI-SHORT RED	1
18	500630	NUT WIRE 73B (NOT SHOWN)	6
19	500640	SLEEVE CRIMP 10-18 GA (NOT SHOWN)	1
20	501070	SCREW GROUND 10-32 X .375	1
21	501080	CONDUIT FOAM SEAL 1/8" H X 3/4"W	4



TYPICAL SOLATUBE DAYLIGHT
DIMMER ASSEMBLY

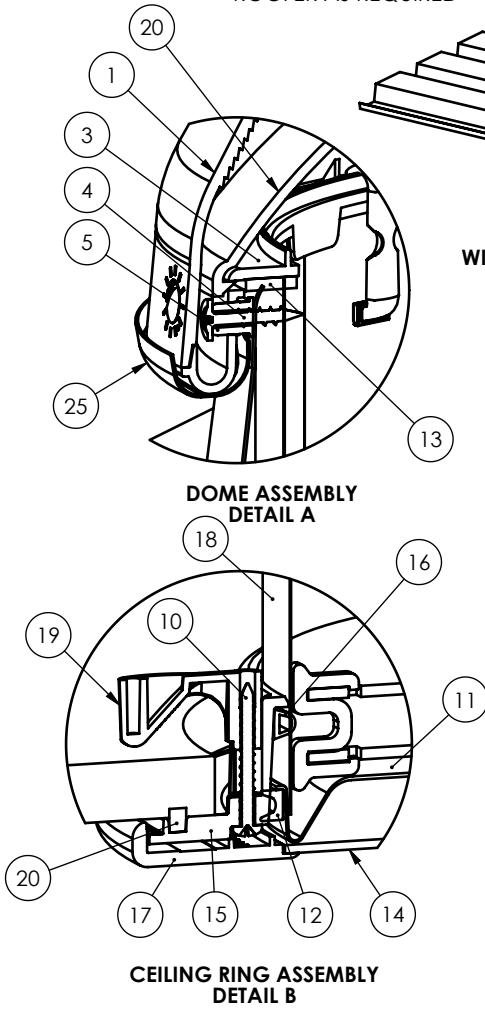
SECTION H-H

- NOTE:
- 1. DAYLIGHT DIMMER KIT SHOWN ASSEMBLED TO 160 DS BOTTOM TUBE.
 - 2. FOR UPPER ASSEMBLY INSTALLATION VIEWS SEE FIGURE 1.
 - 3. EVALUATION OF THESE LIGHT FIXTURES FOR COMPLIANCE TO THE APPLICABLE ELECTRICAL CODES IS NOT PART OF THIS REPORT.

DETAIL J
SCALE 1 : 1.5

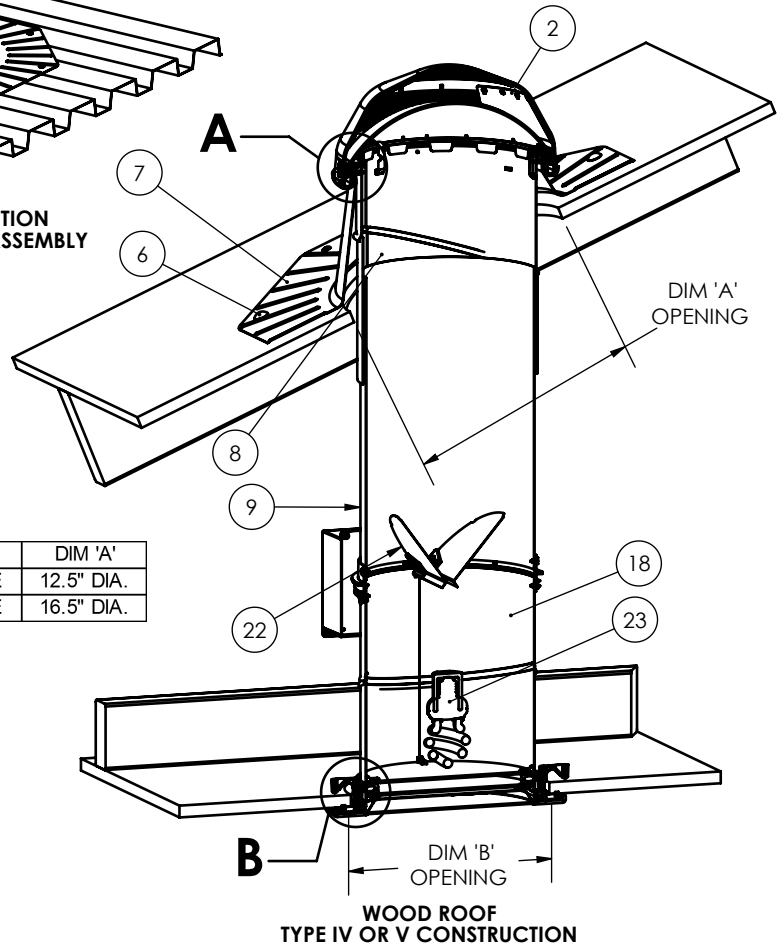
ITEM NO.	PART NUMBER	DESCRIPTION	QTY.
1	420775	RING DAYLIGHT DIMMER	1
2	570005	POWER SUPPLY (NOT SHOWN)	1
3	570008	RETAINER, E-RING, 5/16 (NOT SHOWN)	4
4	570009	PCB, MOTOR CONTROL (NOT SHOWN)	1
5	570010	MOTOR GEARED (NOT SHOWN)	1
6	570015	CAM, DRIVE MECHANISM (NOT SHOWN)	1
7	570016	DOG, DRIVE MECHANISM (NOT SHOWN)	1
8	570018	LID, DRIVE MECHANISM (NOT SHOWN)	1
9	570020	MOUNT, JUNCTION BOX	1
10	570021	COVER, JUNCTION BOX	1
11	570022	SPACER, NYLON 1/2"	1
12	570024	CABLE CLAMP, DLD (NOT SHOWN)	1
13	570025	CLIP, RIGHT	2
14	570026	CLIP, LEFT	2
15	570027	CLIP, BACK RIGHT	2
16	570028	CLIP, BACK LEFT	2
17	570030	DISK, DIMMER	2
18	721050	SCREW TRILOB #4 X 3/16 (NOT SHOWN)	4
19	721055	SCREW TRILOB #6 X 3/8 (NOT SHOWN)	8
20	721060	SCREW TRILOB #8 X 3/8 (NOT SHOWN)	8
21	721065	SCREW TRILOB #8 X 1.0" (NOT SHOWN)	4
22	721070	SCREW TRILOB #12 X 1/2 (NOT SHOWN)	2

NOTE:
FLASHING PROVIDED BY
SOLATUBE, WEATHERPROOFING
DETERMINED BY SOLATUBE
GENERAL CONTRACTOR
AND/OR PROFESSIONAL
ROOFER AS REQUIRED



METAL ROOF
TYPE II OR III CONSTRUCTION
WITH STANDARD DIFFUSER ASSEMBLY

	DIM 'A'
160 DS SOLATUBE	12.5" DIA.
290 DS SOLATUBE	16.5" DIA.



WOOD ROOF
TYPE IV OR V CONSTRUCTION

TURRET EXTENSION FOR FLASHING

NO-PITCH FLASHING

PITCHED FLASHING

CURB FLASHING

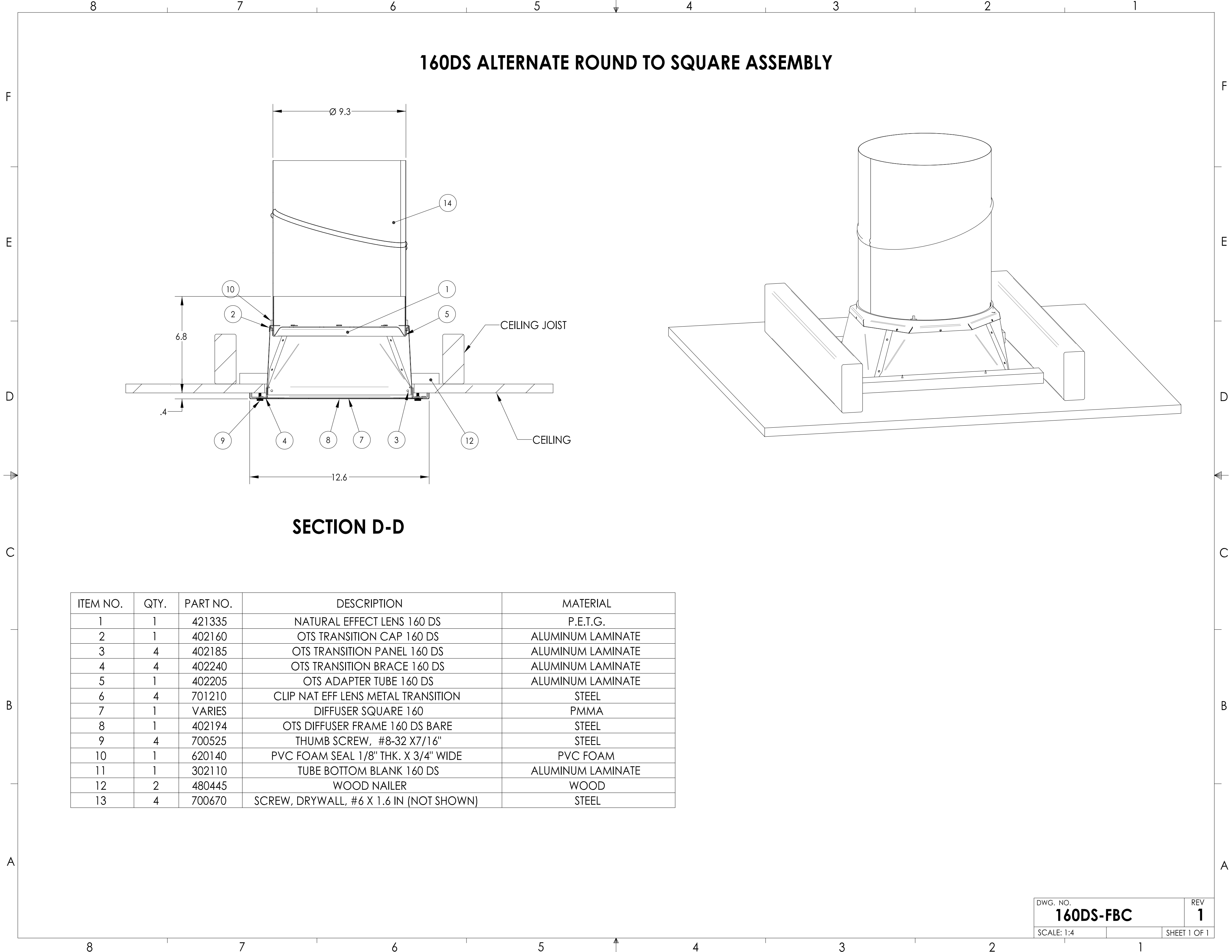
UNIVERSAL TILE FLASHING

ITEM NO.	QTY.	DESCRIPTION
1	1	OUTER DOME
2	1	LIGHT TRACKER
3	1	DOME RING
4	4	SCREW #8 X 1"
5	4	DOME RING SPACER
6*	8	SCREW #10 X 2" SMS
7	1	FLASHING
8	1	TOP TUBE
9	1	TUBE 16" EXTENSION
10	4	SCREW #8 X 1.5" SMS
11	1	EFFECT LENS
12	1	EFFECT LENS SEAL
13	1	DOME RING SEAL
14	1	DIFFUSER PANEL
15	1	CEILING RING
16	1	CEILING RING 'D' SEAL
17	1	DRESS RING
18	1	BOTTOM TUBE
19	4	CLAMP
20	1	CEILING RING RECTANGULAR SEAL

OPTIONAL COMPONENTS		
ITEM NO.	QTY.	DESCRIPTION
21	1	INNER DOME
22	1	DAYLIGHT DIMMER
23	1	LIGHT FIXTURE
24	1	TURRET EXTENSION
25	1	DOME EDGE PROTECTION BAND

* USE (8) #10 TEK SCREWS FOR METAL ROOF

FIGURE 1 - 160 DS & 290 DS SOLATUBE WITH DETAILS



160DS ALTERNATE ROUND TO SQUARE ASSEMBLY

SECTION D-D

ITEM NO.	QTY.	PART NO.	DESCRIPTION	MATERIAL
1	1	421335	NATURAL EFFECT LENS 160 DS	P.E.T.G.
2	1	402160	OTS TRANSITION CAP 160 DS	ALUMINUM LAMINATE
3	4	402185	OTS TRANSITION PANEL 160 DS	ALUMINUM LAMINATE
4	4	402240	OTS TRANSITION BRACE 160 DS	ALUMINUM LAMINATE
5	1	402205	OTS ADAPTER TUBE 160 DS	ALUMINUM LAMINATE
6	4	701210	CLIP NAT EFF LENS METAL TRANSITION	STEEL
7	1	VARIES	DIFFUSER SQUARE 160	PMMA
8	1	402194	OTS DIFFUSER FRAME 160 DS BARE	STEEL
9	4	700525	THUMB SCREW, #8-32 X7/16"	STEEL
10	1	620140	PVC FOAM SEAL 1/8" THK. X 3/4" WIDE	PVC FOAM
11	1	302110	TUBE BOTTOM BLANK 160 DS	ALUMINUM LAMINATE
12	2	480445	WOOD NAILER	WOOD
13	4	700670	SCREW, DRYWALL, #6 X 1.6 IN (NOT SHOWN)	STEEL