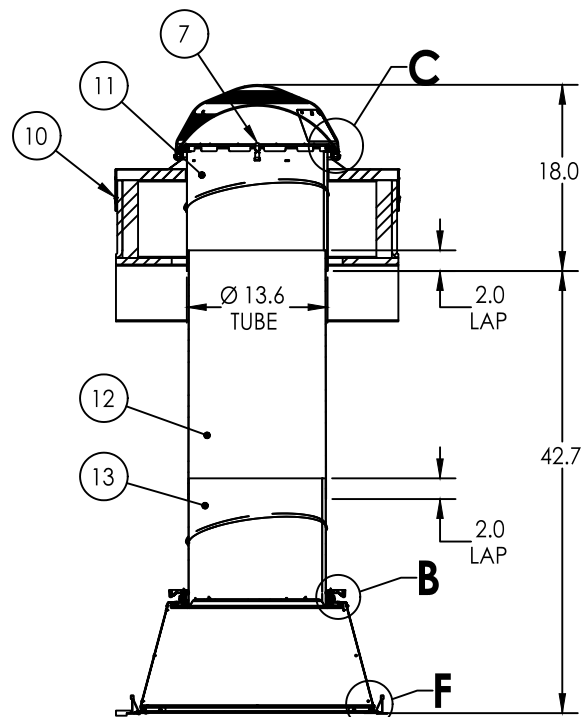
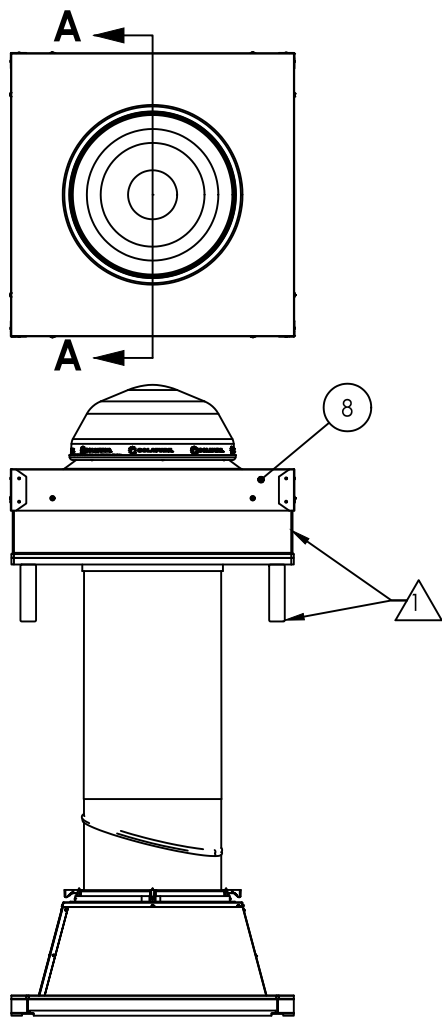
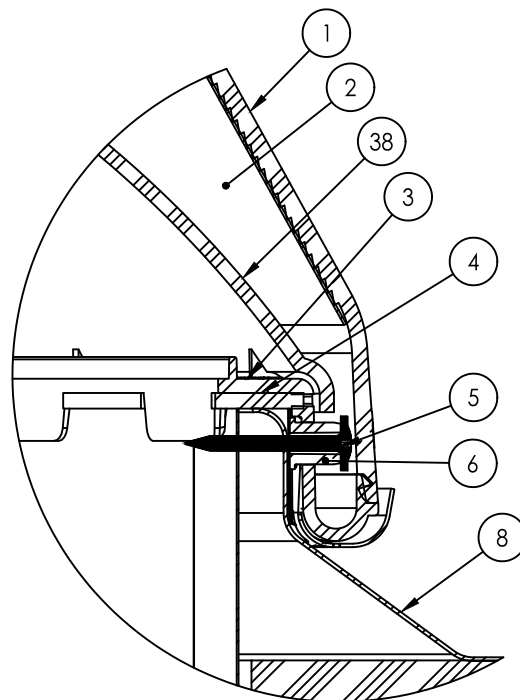


# SOLATUBE INTERNATIONAL

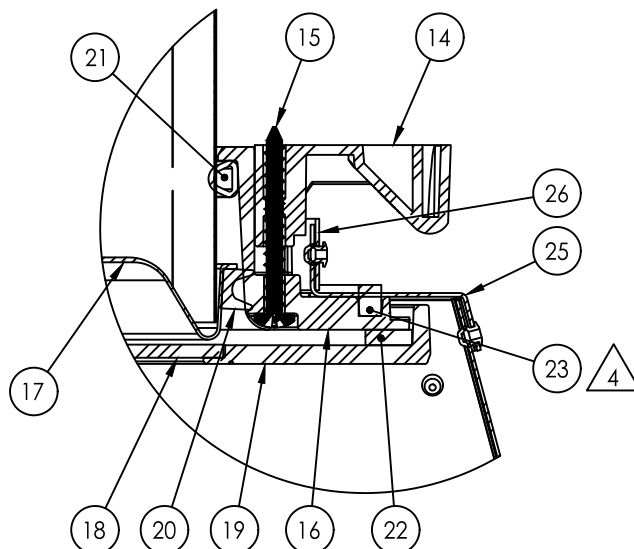
1. ONE (1) #10 INSTALLATION ANCHOR IS REQUIRED AT EACH ANCHOR LOCATION SHOWN ON SHEET 3.
2. THE NUMBER OF INSTALLATION ANCHORS DEPICTED IS THE MINIMUM NUMBER OF ANCHORS TO BE USED FOR PRODUCT INSTALLATION. ALL UNITS REQUIRE EIGHT (8) ANCHORS MINIMUM LOCATED AT ALL CORNERS. ANCHOR ENGINEERING BASED ON ENGAGEMENT INTO ROOF SHEATHING AND NOT 2X ROOF FRAMING.
  - 2.1. INSTALLATION SHALL BE INTO 7/16" MINIMUM THICKNESS ROOF SHEATHING (SEE NOTE 6 BELOW).
  - 2.2. IF TDD INSTALLATION LOCATION REQUIRES ANCHORS TO ENGAGE INTO 2X FRAMING, THAT IS ACCEPTABLE.
3. ANCHOR REQUIREMENTS - ROOF SHEATHING
  - 3.1. FOR INSTALLATION INTO 7/16" MINIMUM THICKNESS ROOF SHEATHING (SEE NOTE 6 BELOW), USE A #10 TYPE AB PAN HEAD, ROUND HEAD OR TRUSS HEAD TAPPING SCREWS MEETING ASME/ANSI B18.6.4 OF SUFFICIENT LENGTH TO ENSURE PROTRUDING SCREW THREADS AT LEAST 1/2" BEYOND THE INTERIOR SURFACE OF ROOF SHEATHING. EDGE DISTANCE FROM CENTERLINE OF SCREW TO EDGE OF SHEATHING SHALL BE AT LEAST 3/4 INCH.
  - 3.2. FOR INSTALLATION THROUGH ROOF SHEATHING INTO 2X WOOD ROOF FRAMING (SEE NOTE 6 BELOW), USE A #10 TYPE AB PAN HEAD, ROUND HEAD OR TRUSS HEAD TAPPING SCREWS MEETING ASME/ANSI B18.6.4 OF THE SAME LENGTH AS REQUIRED IN NOTE 3.1 ABOVE. EDGE DISTANCE FROM CENTERLINE OF SCREW TO EDGE OF SHEATHING SHALL BE AT LEAST 3/4 INCH.
  - 3.3. FOR INSTALLATION INTO METAL ROOF SHEATHING, ADDITIONAL INSTALLATION DETAILING AND ENGINEERED INSTALLATION EVALUATION BY A LICENSED DESIGN PROFESSIONAL WILL BE REQUIRED FOR SUBMITTAL IN ADDITION TO THIS PRODUCT EVALUATION DOCUMENT.
4. MINIMUM EMBEDMENT AND EDGE DISTANCE EXCLUDE ROOF FINISHES.
5. INSTALLATION ANCHORS MUST BE MADE OF CORROSION RESISTANT MATERIAL OR HAVE A CORROSION RESISTANT COATING.
6. INSTALLATION ANCHOR CAPACITIES FOR PRODUCTS HEREIN ARE BASED ON SUBSTRATE MATERIALS WITH THE FOLLOWING PROPERTIES. ROOF SHEATHING THICKNESS, GROUP OR GRADE MAY BE MANDATED BY JURISDICTION REQUIREMENTS, THEREFORE THICKNESS AND GROUP/GRADE SHOWN BELOW WILL BE CONSIDERED MINIMUM.
  - 6.1. 7/16" THICK PLYWOOD - SPECIES GROUP 1 OR 2 (APA VOLUNTARY PRODUCT STANDARD PS 1) MINIMUM.
  - 6.2. 7/16" OSB - SHEATHING GRADE (APA VOLUNTARY PRODUCT STANDARD PS 2) MINIMUM.
7. INSTALLATION/MOUNTING CONDITIONS AND LIMITATIONS OF USE AS REQUIRED BY THE FOLLOWING SECTIONS OF THE CURRENT EDITION OF THE FLORIDA BUILDING CODE (FBC) AND FLORIDA RESIDENTIAL CODE (FRC) SHALL BE MET.
  - 7.1. FBC, SECTION 2405, SLOPED GLAZING AND SKYLIGHTS
  - 7.2. FBC, SECTION 2610, LIGHT-TRANSMITTING PLASTIC SKYLIGHT GLAZING
  - 7.3. FRC, SECTION R308, SKYLIGHTS AND SLOPED GLAZING
8. A CURB CONSTRUCTED IN ACCORDANCE WITH THE REQUIREMENTS FOR THE TYPE OF CONSTRUCTION CLASSIFICATION, BUT AT LEAST 4 INCHES ABOVE THE PLANE OF THE ROOF BY OTHERS IS ALLOWED. ADDITIONAL INSTALLATION DETAILING AND ENGINEERED INSTALLATION EVALUATION BY A LICENSED DESIGN PROFESSIONAL WILL BE REQUIRED FOR SUBMITTAL IN ADDITION TO THIS PRODUCT EVALUATION DOCUMENT.
9. SEE 300 DS SKYLIGHT - MANUFACTURERS INSTALLATION DETAIL PACKAGE FOR ADDITIONAL DETAILS RELATED TO SKYLIGHT OPTIONS AND INSTALLATION OPTIONS INCLUDING CURB CONSTRUCTION INSTALLATION.



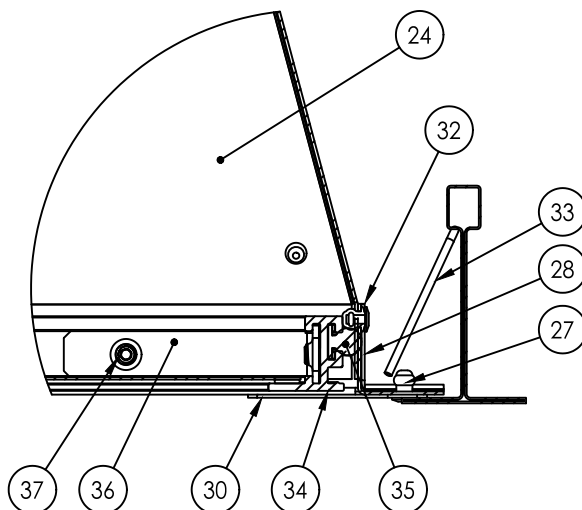
SECTION A-A



DETAIL C  
SCALE 1 : 1



DETAIL B  
SCALE 1 : 1



DETAIL F  
SCALE 1 : 1

NOTES:

1. STRUCTURAL ELEMENTS (PLYWOOD, RAFTERS, DRYWALL ETC.) BY OTHERS & SHOWN FOR REFERENCE ONLY
2. ALL TUBE JOINTS & SEAMS TAPED WITH 2" FOIL TAPE (NOT SHOWN)
3. SEE 300 DS SKYLIGHT - MANUFACTURERS INSTALLATION DETAIL PACKAGE FOR ALTERNATE DIFFUSER CONFIGURATIONS
4. ITEM #22; RECTANGULAR FOAM OR SEALANT BEAD

SEE 300 DS SKYLIGHT - MANUFACTURERS INSTALLATION DETAIL PACKAGE FOR ADDITIONAL DETAILS RELATED TO SKYLIGHT OPTIONS AND INSTALLATION OPTIONS INCLUDING CURB CONSTRUCTION INSTALLATION.

ITEM NO.	QTY.	PART NO.	DESCRIPTION	MATERIAL
1	1	410820	DOMES 290 DS	PMMA
2	1	410830	LIGHTTRACKER RELECTOR 290 DS	ALUMINUM LAMINATE
3	1	410860	DOMES RING 290 DS	PMMA
4	1	600610	FOAM SEAL RECTANGULAR 1/8" X 9/16"	FOAM (VARIOUS)
5	4	700240	SCREW #8 X 1" SMS	STEEL
6	4	410730	DOMES RING SPACER	POLYAMIDE
7	3	410750	TOP TUBE CLIP	PMMA
8	1	230630	CURB FLASHING	STEEL
9	1	700280/700300	SEALANT (NOT SHOWN)	URETHANE
10	8	700480	SCREW #10 X 2" SMS	STEEL
11	1	302240	TOP TUBE 290 DS	ALUMINUM LAMINATE
12	1	301800/301830	EXT. TUBE 16"/24" 290 DS	ALUMINUM LAMINATE
13	1	302120	BOTTOM TUBE 290 DS	ALUMINUM LAMINATE
14	4	410220	CLAMP	POLYAMIDE
15	4	700450	SCREW #8 x 1.5" SMS	STEEL
16	1	410415	CEILING RING 290 DS	PMMA
17	1	421345	290 DS NATURAL EFFECT LENS	PET
18	1	410530, 420080	290 DS DIFFUSER PANEL	PMMA, PC
19	1	410715	DRESS RING 290 DS (OPTIONAL)	PMMA
20	1	600290	290 DS EFFECT LENS SEAL	EPDM FOAM
21	1	600445	D-SEAL HOLLOW	EPDM FOAM
22	1	420610	DRESS RING SEAL 290 DS (OPTIONAL)	PE FOAM
23	1	600620	FOAM SEAL RECTANGULAR 3/16" X 1/4"	CLOSED CELL FOAM
	1	-	ALTERNATE (PROVIDED BY USER)	ACRYLIC SEALANT (VARIOUS)
24	4	410775	TRANSITION PANEL DIMPLED 300 DS	ALUMINUM LAMINATE
25	1	402340	TRANSITION BOX CAP 300 DS	STEEL
26	1	402350	TRANSITION CAP BELT 300 DS	STEEL
27	10	701180	RIVET 1/8 X 1/4 BLIND, MULTI WHITE	ALUMINUM
28	4	402180	TRANSITION TRIM SECTION	STEEL
29	2	402250	TRANSITION TRIM CORNER BRACE (NOT SHOWN)	STEEL
30	2	402325	TRANSITION TRIM LEVER	STEEL
31	17.33 LF	620150	TAPE FOIL, ROLL 50M (NOT SHOWN)	ALUMINUM
32	32	700635	RIVET 1/8 x 1/4 BLIND, MULTI	ALUMINUM
33	4	520090	CLIP	STEEL
34	4	410475	EXTRUSION ALUMINUM	ALUMINUM
35	7.33 FT	600600	FOAM SEAL T-SLOT	URETHANE FOAM
36	4	701130	CORNER KEY	STEEL
37	8	701155	SET SCREW 8-32 X 1/8" CUP	STEEL
38	1	410865	290 DS SHOCK INNER DOME	POLYCARBONATE

PROJECT NUMBER: 417-0603

SOLATUBE INTERNATIONAL

2210 OAK RIDGE WAY

VISTA, CA 92081-9341

TITLE:

IMPACT 300 DS (14")

TUBULAR DAYLIGHT DEVICE

ELEVATIONS, SECTIONS, DETAILS AND B.O.M.

PREPARED BY:

RJA

DATE:

10/17/17

DRAWING NO:

SOLA0013

SHEET:

2 OF 3

REV:

---

DESCRIPTION

DATE

BY

PTC PRODUCT DESIGN GROUP, LLC

PO BOX 520775

LONGWOOD, FL 32075

FLORIDA, U.S.A.

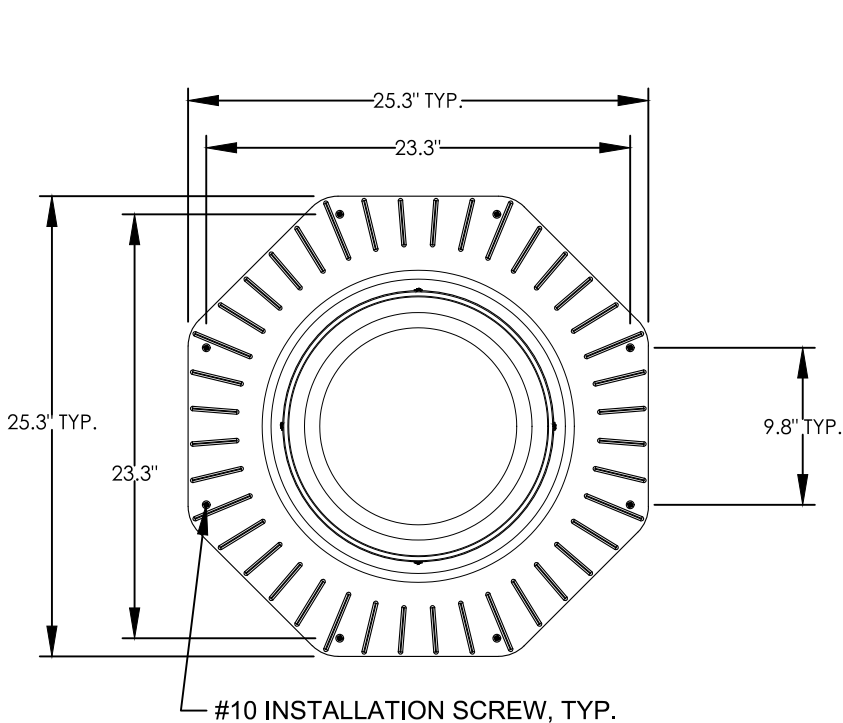
Phone: 321.690.1788

Fax: 321.690.1789

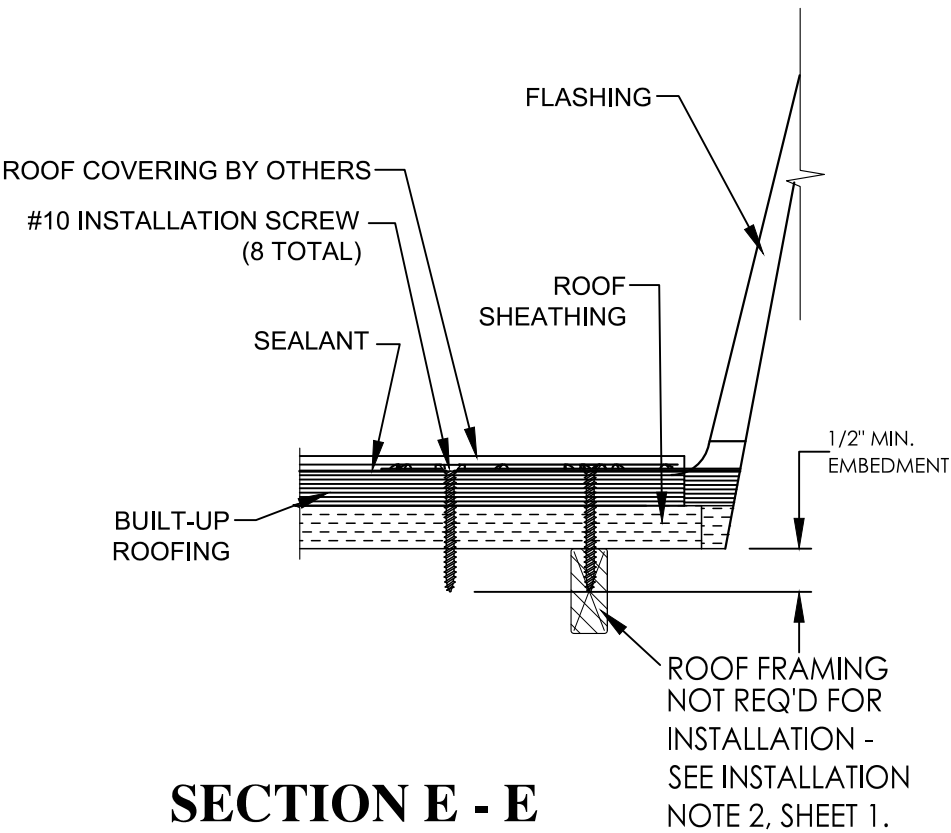
Email: info@ptc-corp.com

Robert J. Amoruso, P.E.

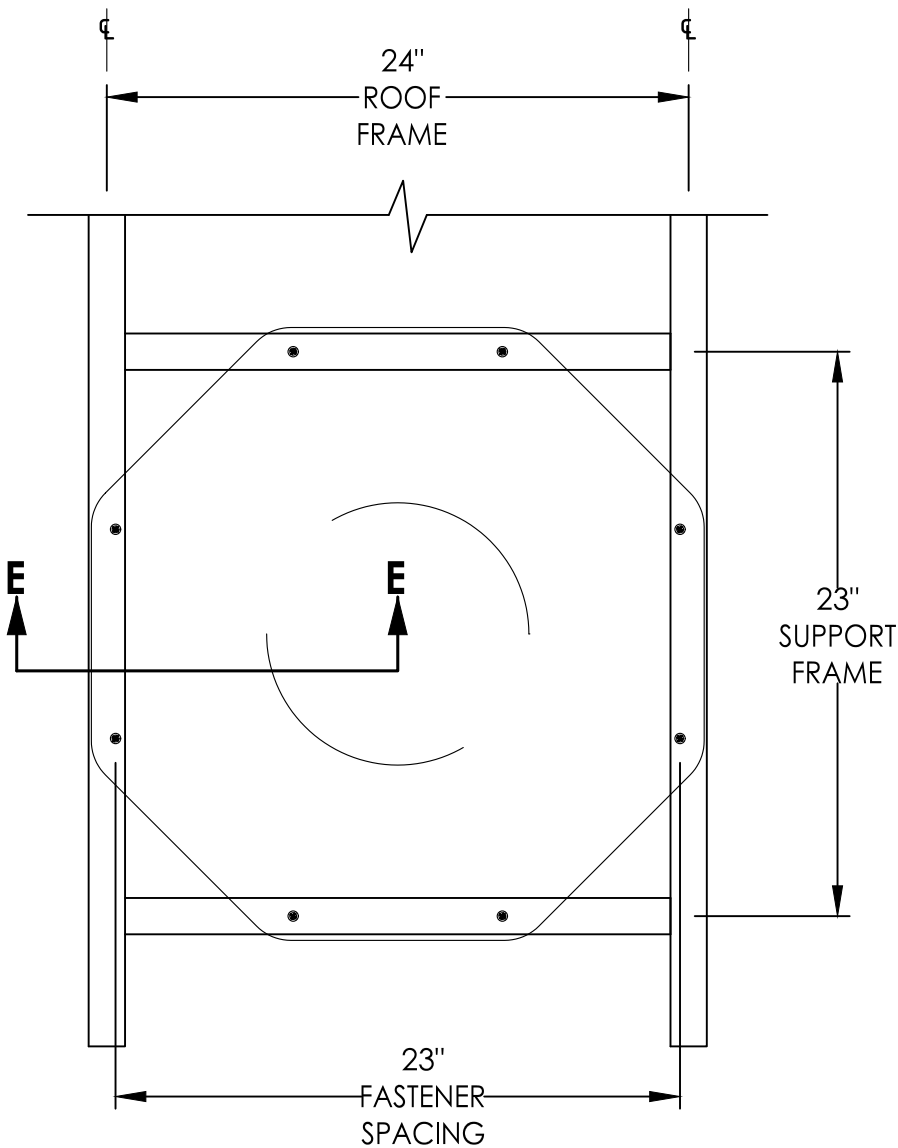
FL P.E. No. 49752



**14" 300 DS  
SOLATUBE FLASHING  
PLAN**



**SECTION E - E**



**FRAMING DETAIL 14"**

PROJECT NUMBER: 417-0603							

SOLATUBE INTERNATIONAL 2210 OAK RIDGE WAY VISTA, CA 92081-9341		IMPACT 300 DS (14") TUBULAR DAYLIGHT DEVICE INSTALLATION DETAILS AND SECTIONS		DATE: 10/17/17	DRAWING NO: SOLA0013	SHEET: 3 OF 3
TITLE:		PREPARED BY: RJA		SCALE: N.T.S.	REV: ---	
PTC PRODUCT DESIGN GROUP, LLC PO BOX 520775 LONGWOOD, FL 32752 FLORIDA, U.S.A. FPE, CA, NO. 28335		DRAWN BY: RJA		DATE: 10/17/17	DRAWING NO: SOLA0013	SHEET: 3 OF 3
PTC PRODUCT DESIGN GROUP, LLC PO BOX 520775 LONGWOOD, FL 32752 FLORIDA, U.S.A. FPE, CA, NO. 28335		SCALE: N.T.S.		REV: ---		

Robert J. Amoruso, P.E.  
FL P.E. No. 49752