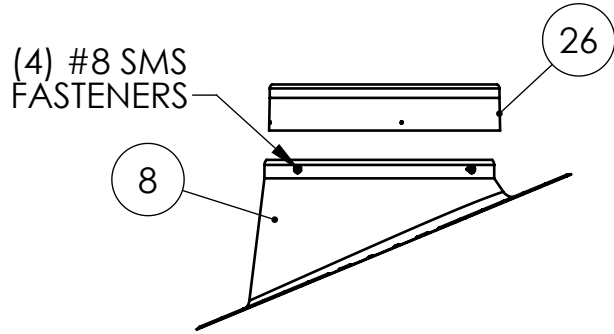
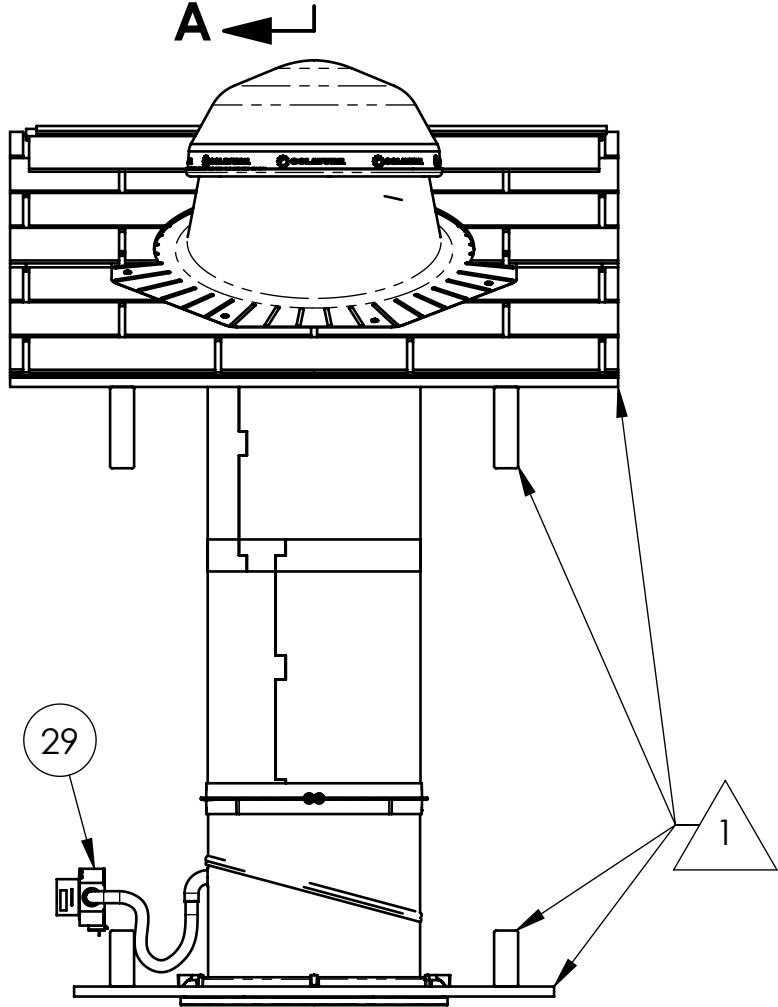
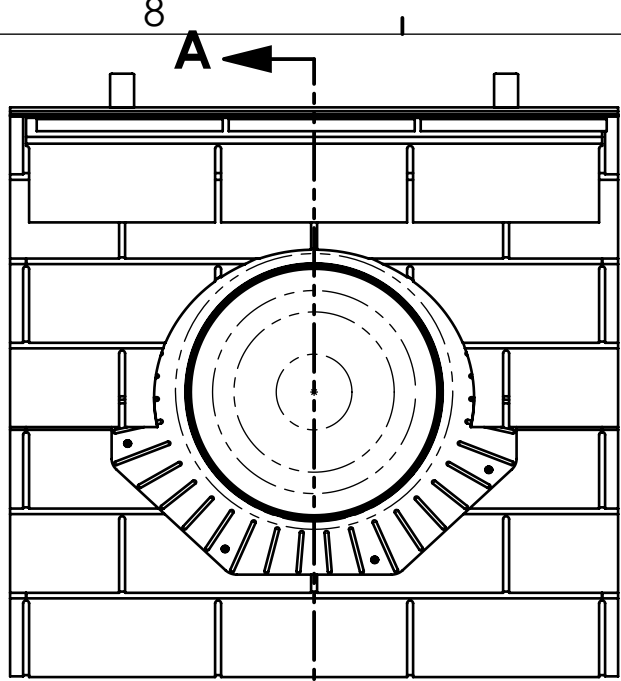
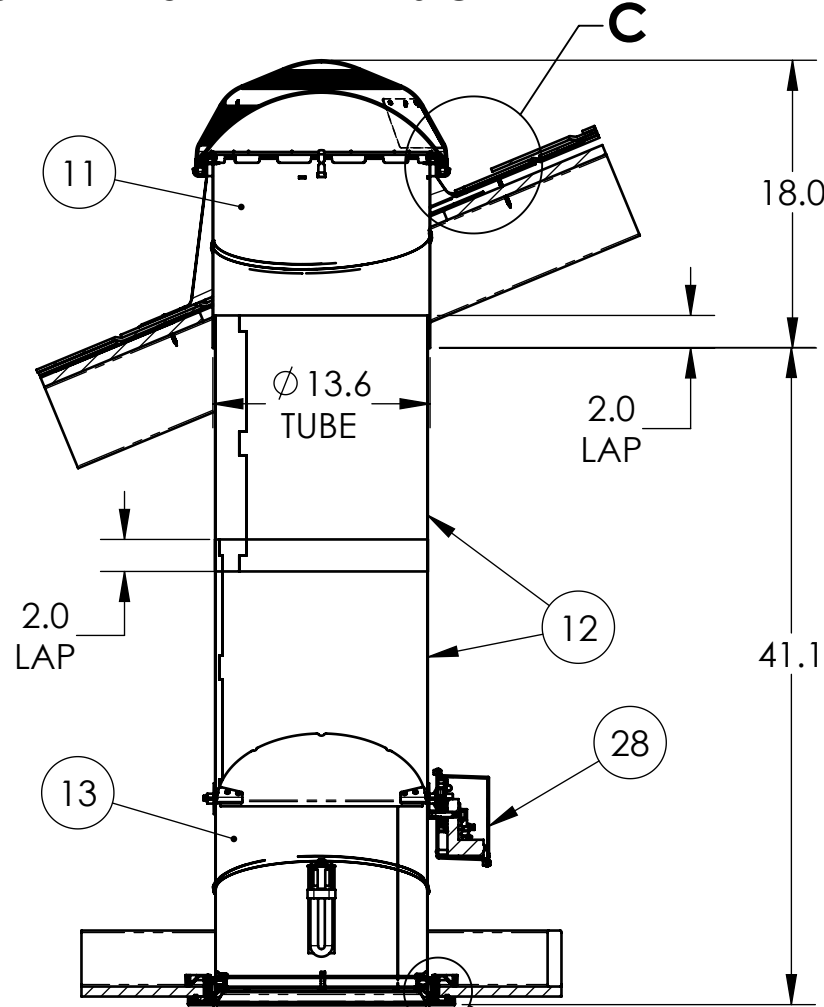


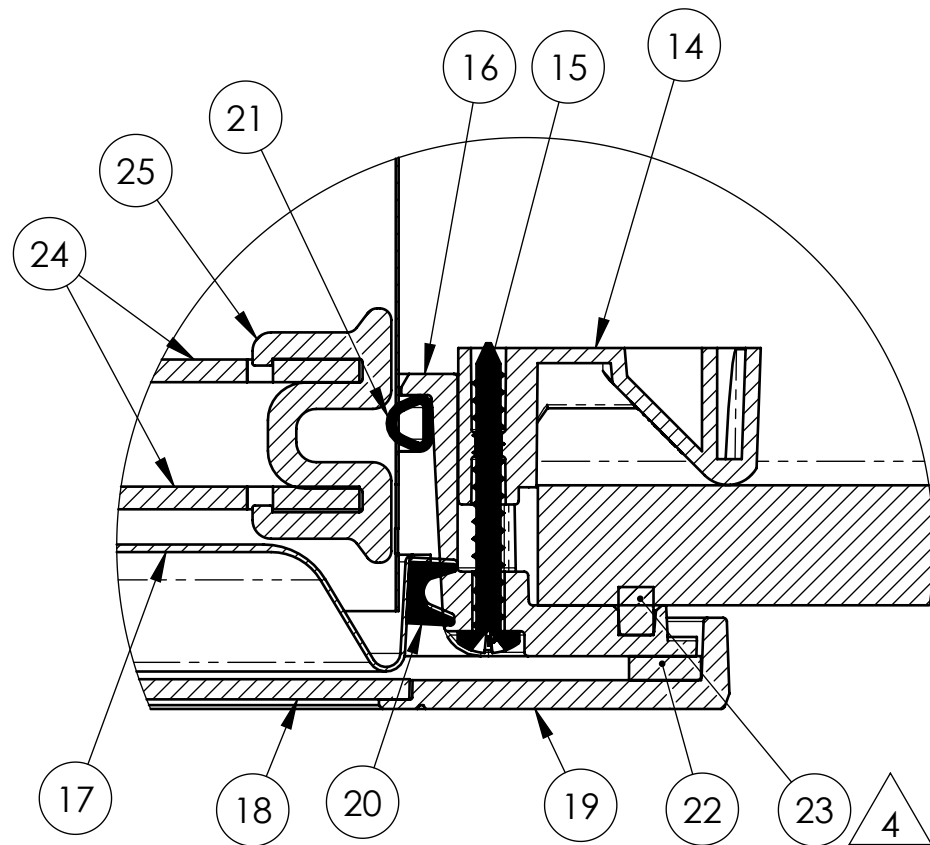
F
E
D
C
B
A



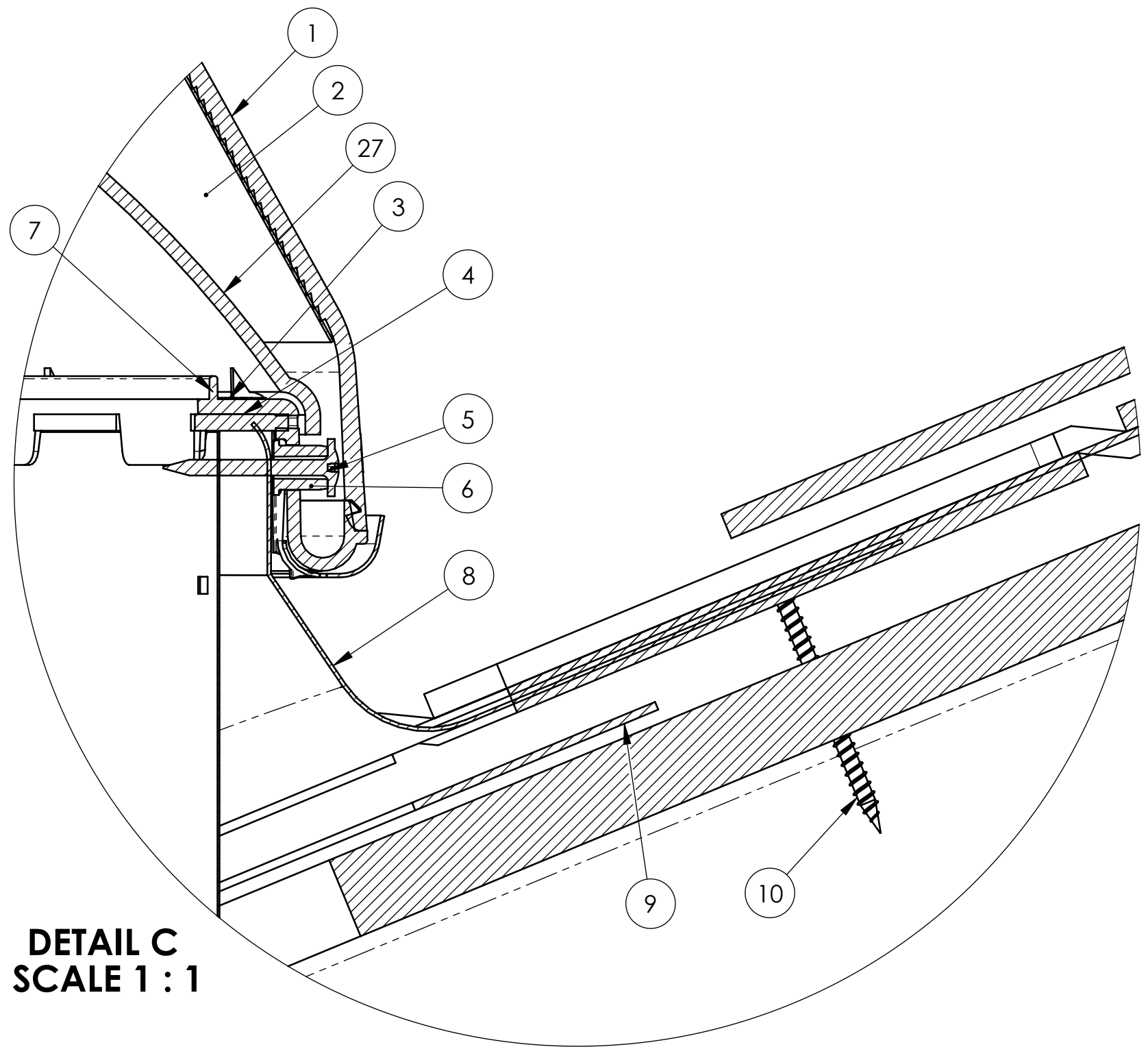
FLASHING SHOWN WITH OPTIONAL
2"-48" TALL TURRET EXTENSION



SECTION A-A



DETAIL B
SCALE 1 : 1




DETAIL C
SCALE 1 : 1

- NOTES:
1. STRUCTURAL ELEMENTS (PLYWOOD, RAFTERS, DRYWALL ETC.) BY OTHERS & SHOWN FOR REFERENCE ONLY
 2. ALL TUBE JOINTS & SEAMS TAPED WITH 2" FOIL TAPE (NOT SHOWN)
 3. SEE PAGE 3 FOR ALTERNATE DIFFUSER CONFIGURATIONS
 4. ITEM #22; RECTANGULAR FOAM OR SEALANT BEAD

ITEM NO.	QTY.	PART NO.	DESCRIPTION	MATERIAL
1	1	410820	DOME 290 DS	PMMA
2	1	410830	LIGHTTRACKER RELECTOR 290 DS	ALUMINUM LAMINATE
3	1	410660	DOME RING 290 DS	PMMA
4	1	600610	FOAM SEAL RECTANGULAR 1/8" X 9/16"	FOAM (VARIOUS)
5	4	700240	SCREW #8 X 1" SMS	STEEL
6	4	410730	DOME RING SPACER	POLYAMIDE
7	3	410750	TOP TUBE CLIP	PMMA
8	1	VARIES*	FLASHING	STEEL
9	1	700280/700300	SEALANT	URETHANE
10	8	700480	SCREW #10 X 2" SMS	STEEL
11	1	302240	TOP TUBE 290 DS	ALUMINUM LAMINATE
12	1	301800/301830	EXT. TUBE 16"/24" 290 DS	ALUMINUM LAMINATE
13	1	302120	BOTTOM TUBE 290 DS	ALUMINUM LAMINATE
14	4	410220	CLAMP	POLYAMIDE
15	4	700450	SCREW #8 x 1.5" SMS	STEEL
16	1	410415	CEILING RING 290 DS	PMMA
17	1	421345	290 DS NATURAL EFFECT LENS	PET
18	1	410530, 420080	290 DS DIFFUSER PANEL	PMMA, PC
19	1	410715	DRESS RING 290 DS	PMMA
20	1	600290	290 DS EFFECT LENS SEAL	EPDM FOAM
21	1	600445	D-SEAL HOLLOW	EPDM FOAM
22	1	420610	DRESS RING SEAL 290 DS	PE FOAM
23	1	600620	FOAM SEAL RECTANGULAR 3/16" X 1/4"	CLOSED CELL FOAM
	1	-	ALTERNATE (PROVIDED BY USER)	ACRYLIC SEALANT (VARIOUS)

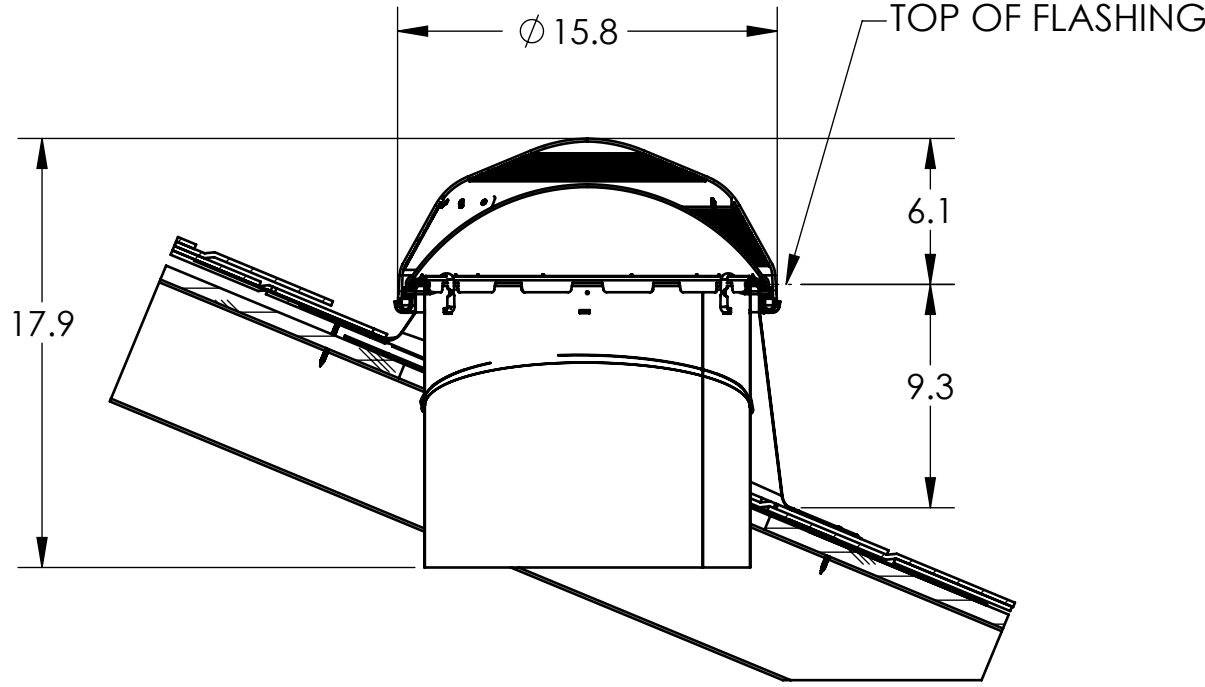
OPTIONAL COMPONENTS				
ITEM NO.	QTY.	PART NO.	DESCRIPTION	MATERIAL
24	2	420260	290 DS INSULATION PANEL (NOT SHOWN)	PMMA
25	4	420270	INSULATION PANEL CLIP (NOT SHOWN)	PMMA
26	1	VARIES**	TURRET EXTENSION	STEEL
27	1	410810	290 DS DOME SHOCK INNER	PMMA
28	1	570002	290 DS DAYLIGHT DIMMER	
29	1	510000, 501100	LIGHT KIT (SBCFL, 4-pin)	

* PN'S 200760, 200581, 230445, 230630
** PN'S 230760, 230540, 230550, 230560, 230570

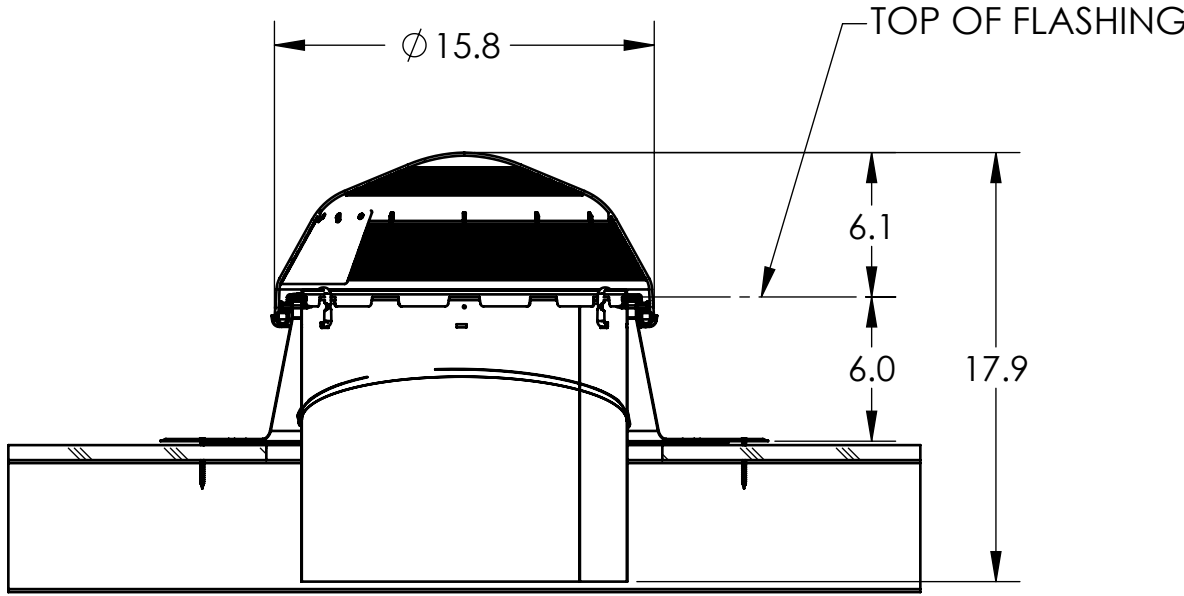
UNLESS OTHERWISE SPECIFIED:		PROPRIETARY AND CONFIDENTIAL		<div></div> <div>SOLATUBE 2210 OAK RIDGE WAY VISTA, CALIFORNIA 92081-8341 PH (760) 597-4400</div>		
TOLERANCES ANGULAR: ±0.5°		THE INFORMATION CONTAINED IN THIS DRAWING IS THE SOLE PROPERTY OF SOLATUBE. ANY REPRODUCTION IN PART OR AS A WHOLE WITHOUT THE WRITTEN PERMISSION OF SOLATUBE IS PROHIBITED.				
INCH MILLIMETER						
.X ± .1 [.X] ± 2.5 .XX ± .01 [.XX] ± .25 .XXX ± .005 [.XXX] ± .12						
MATERIAL -- --		DRAWN BY STEVENS		DATE 8/11/10		
FINISH --		CHECKED BY --		DATE --		
DO NOT SCALE DRAWING		APPROVED BY --		DATE --		
TITLE:				<div>290 DS (14") SOLATUBE ASSY PITCHED FLASHING</div>		
SIZE		DWG. NO. 290-PF-HC-STD				REV 4
SCALE: 1:12						SHEET 1 OF 5

F
E
D
C
B
A

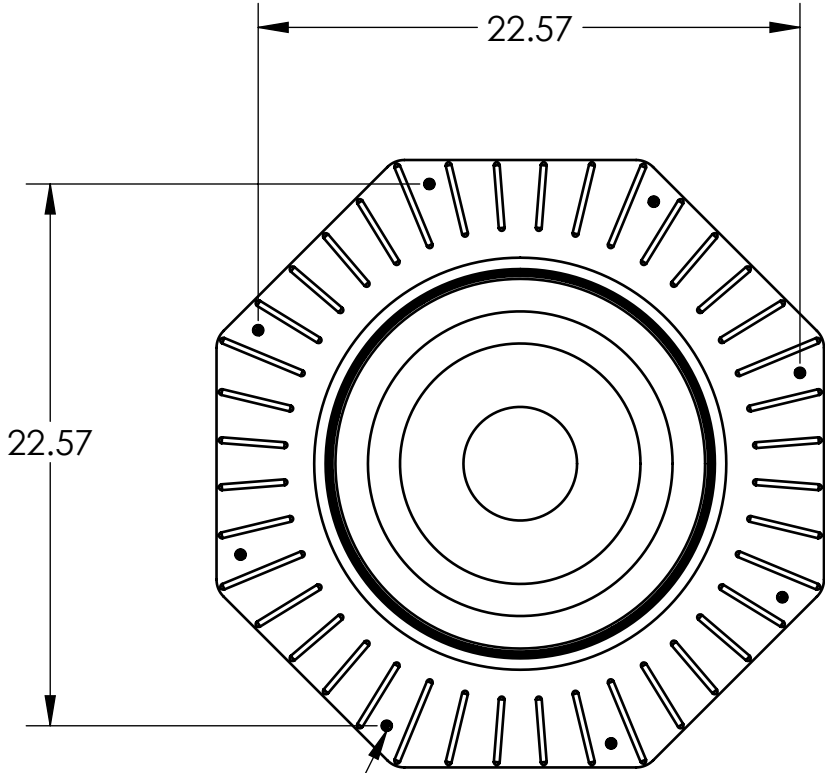
290DS SOLATUBE
FLASHINGS



PITCHED

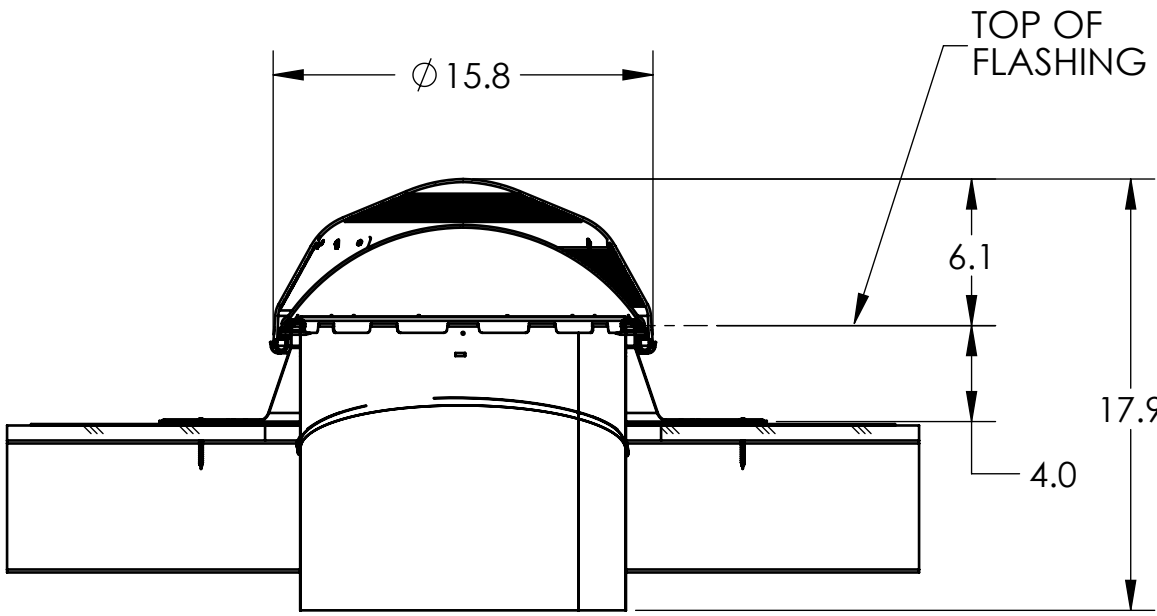


FLAT 6"

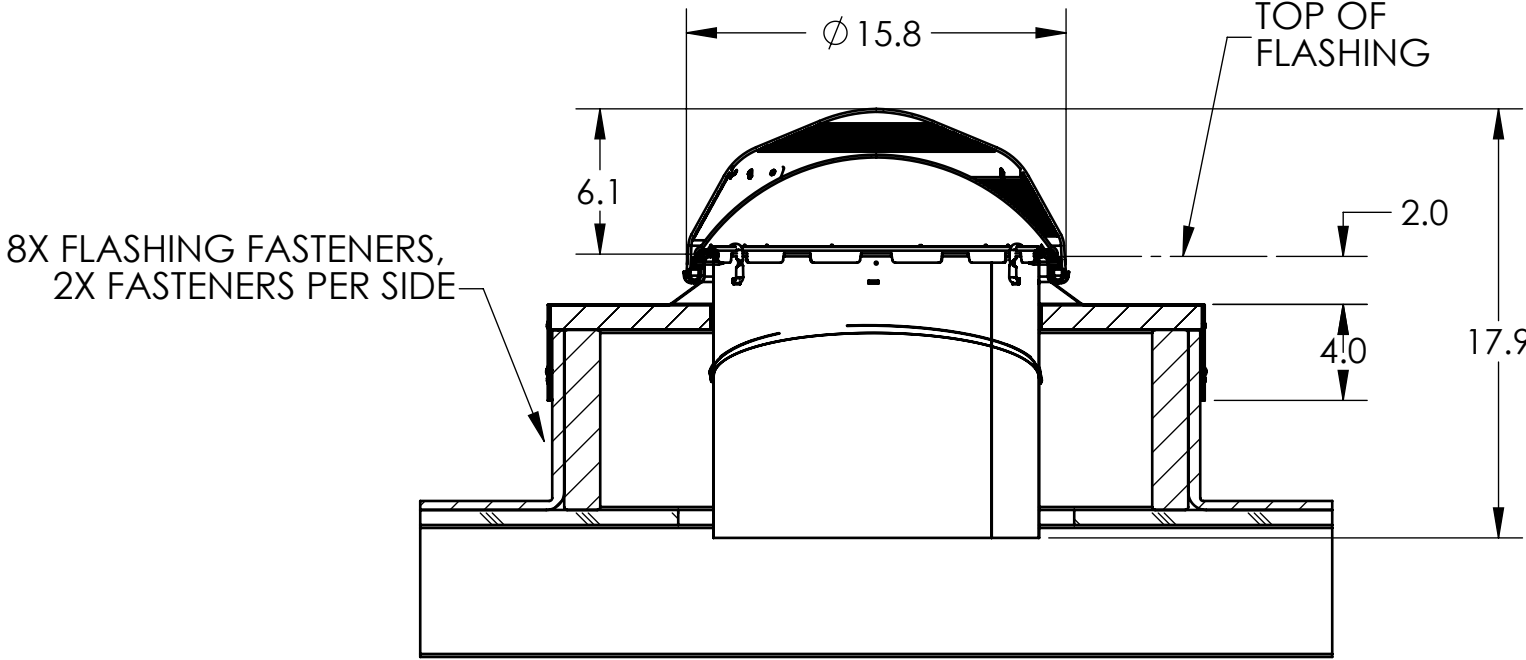


8X FLASHING
FASTENERS

FLASHING FASTENER SPACING
FLAT 4", FLAT 6" & PITCHED

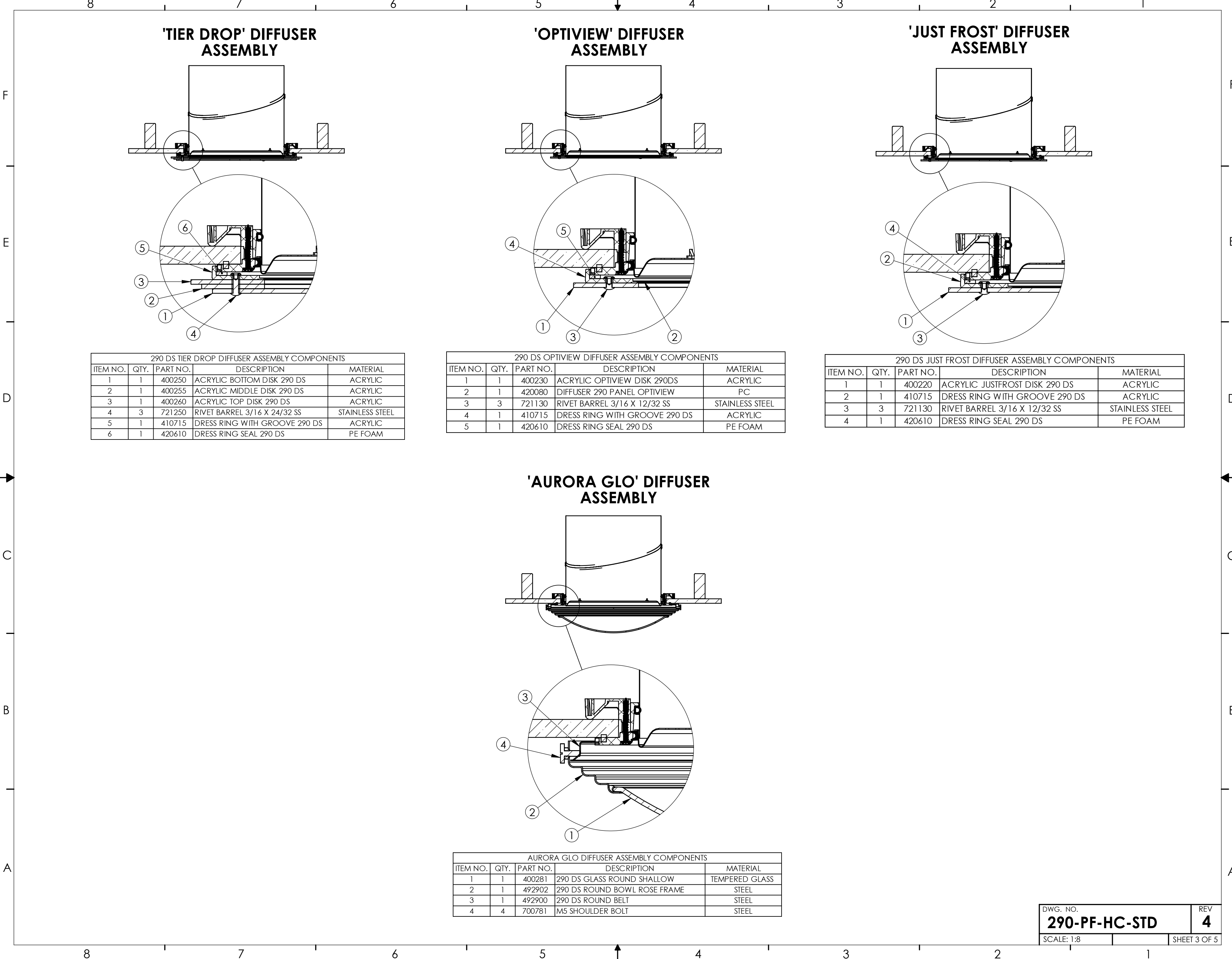


FLAT 4"

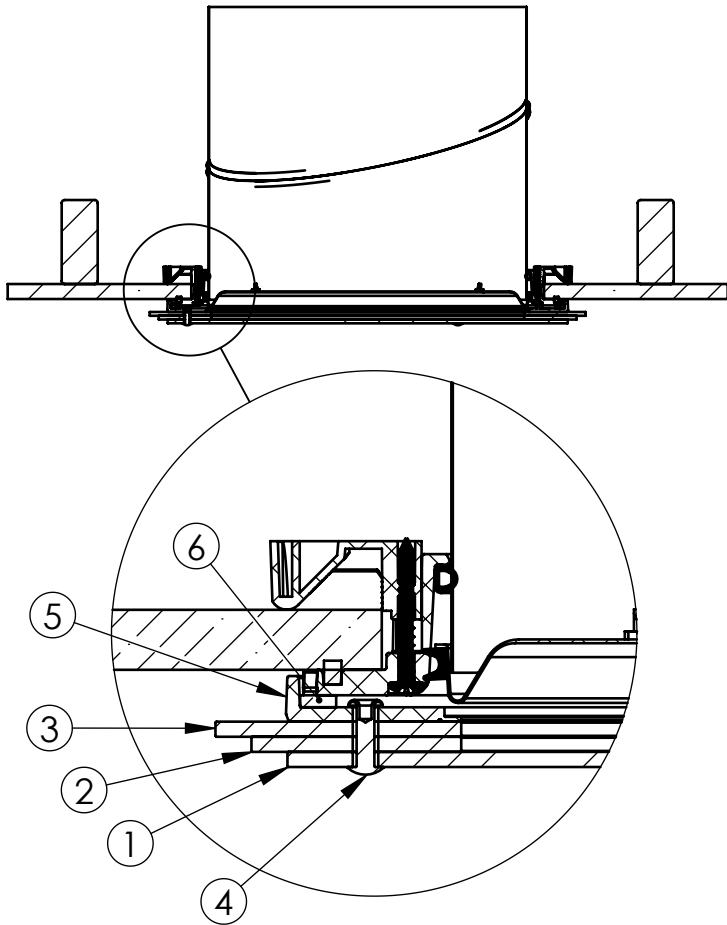


8X FLASHING FASTENERS,
2X FASTENERS PER SIDE

CURB

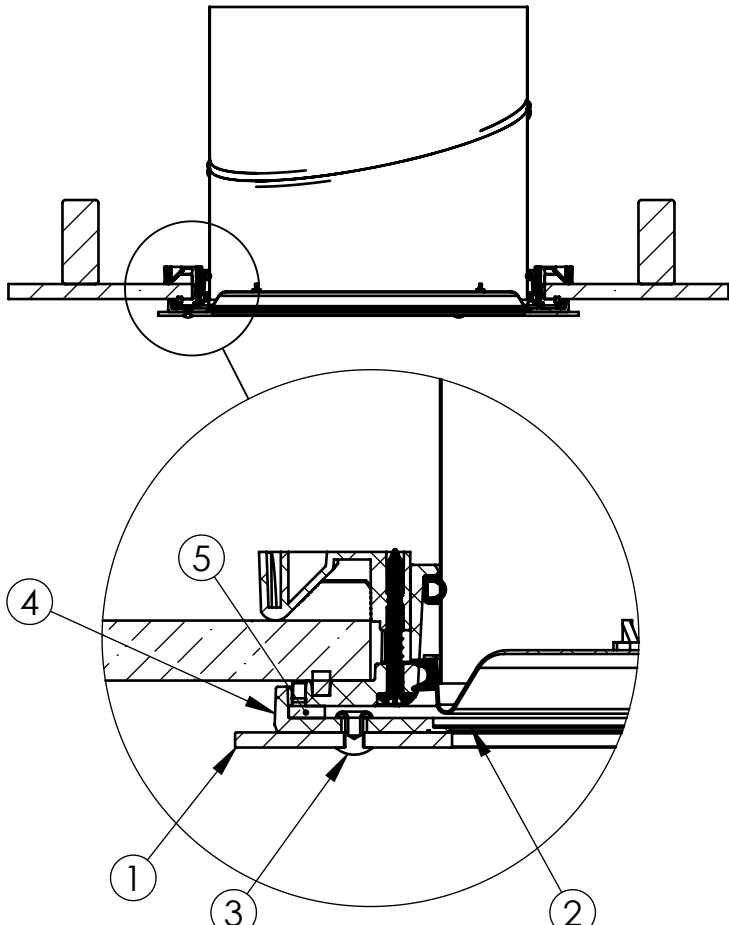


'TIER DROP' DIFFUSER ASSEMBLY



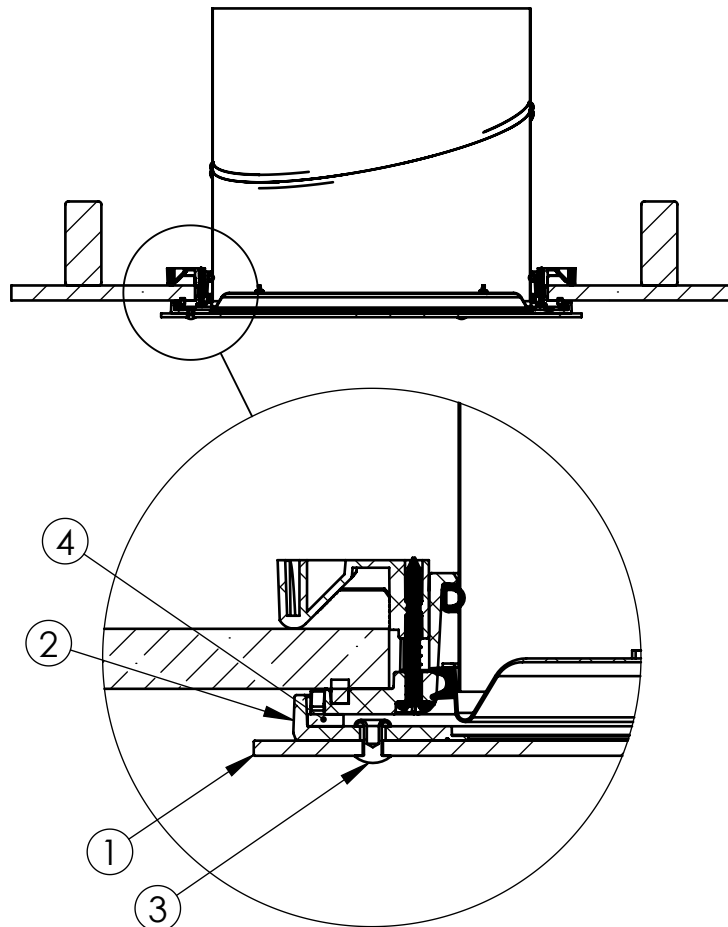
290 DS TIER DROP DIFFUSER ASSEMBLY COMPONENTS				
ITEM NO.	QTY.	PART NO.	DESCRIPTION	MATERIAL
1	1	400250	ACRYLIC BOTTOM DISK 290 DS	ACRYLIC
2	1	400255	ACRYLIC MIDDLE DISK 290 DS	ACRYLIC
3	1	400260	ACRYLIC TOP DISK 290 DS	ACRYLIC
4	3	721250	RIVET BARREL 3/16 X 24/32 SS	STAINLESS STEEL
5	1	410715	DRESS RING WITH GROOVE 290 DS	ACRYLIC
6	1	420610	DRESS RING SEAL 290 DS	PE FOAM

'OPTIVIEW' DIFFUSER ASSEMBLY



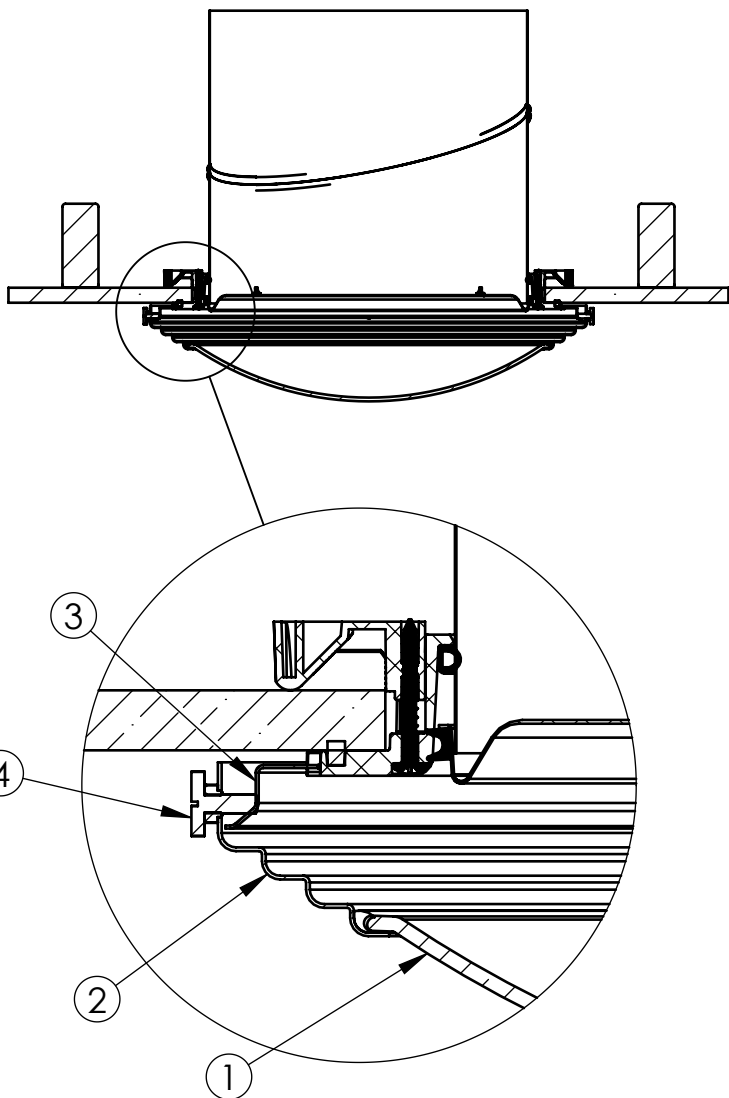
290 DS OPTIVIEW DIFFUSER ASSEMBLY COMPONENTS				
ITEM NO.	QTY.	PART NO.	DESCRIPTION	MATERIAL
1	1	400230	ACRYLIC OPTIVIEW DISK 290DS	ACRYLIC
2	1	420080	DIFFUSER 290 PANEL OPTIVIEW	PC
3	3	721130	RIVET BARREL 3/16 X 12/32 SS	STAINLESS STEEL
4	1	410715	DRESS RING WITH GROOVE 290 DS	ACRYLIC
5	1	420610	DRESS RING SEAL 290 DS	PE FOAM

'JUST FROST' DIFFUSER ASSEMBLY



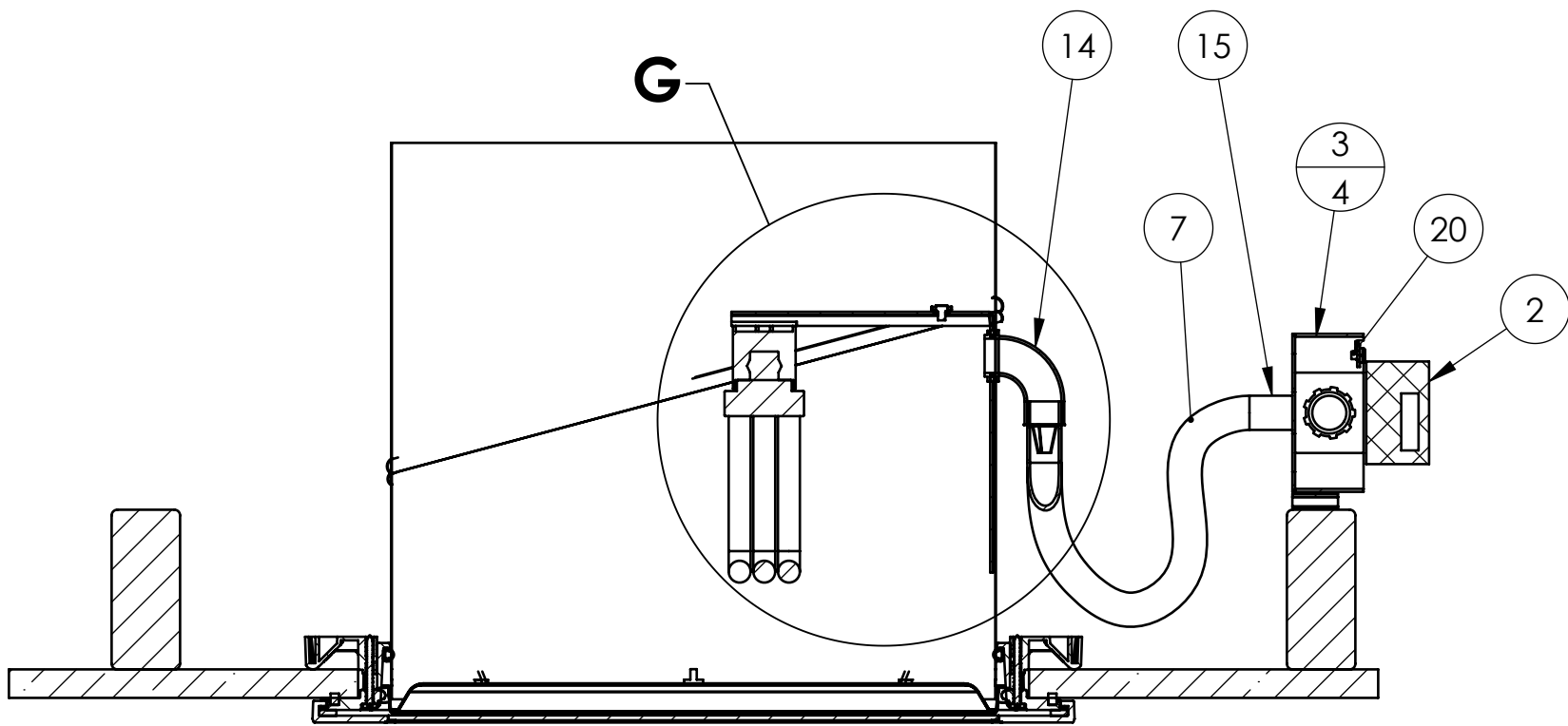
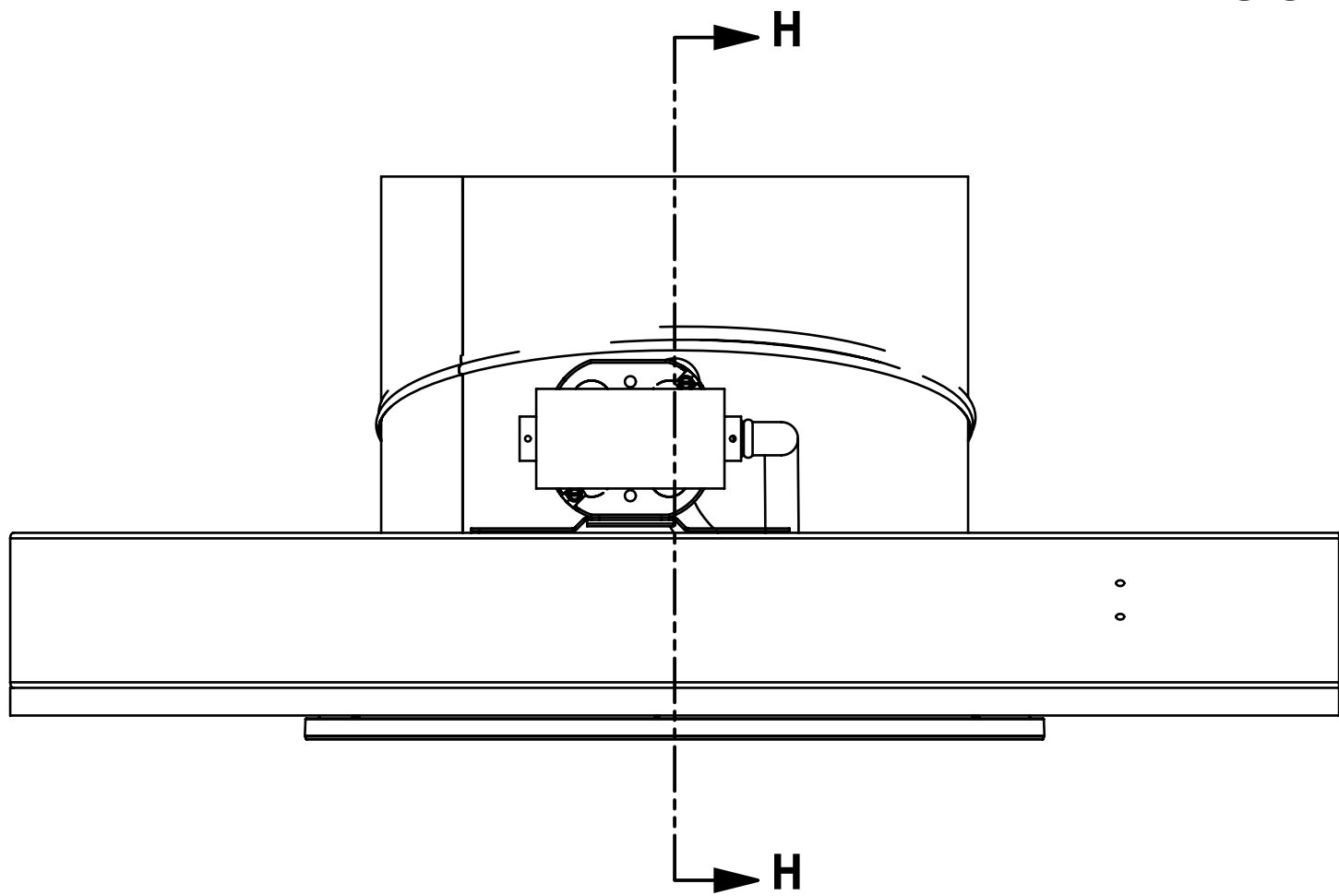
290 DS JUST FROST DIFFUSER ASSEMBLY COMPONENTS				
ITEM NO.	QTY.	PART NO.	DESCRIPTION	MATERIAL
1	1	400220	ACRYLIC JUSTFROST DISK 290 DS	ACRYLIC
2	1	410715	DRESS RING WITH GROOVE 290 DS	ACRYLIC
3	3	721130	RIVET BARREL 3/16 X 12/32 SS	STAINLESS STEEL
4	1	420610	DRESS RING SEAL 290 DS	PE FOAM

'AURORA GLO' DIFFUSER ASSEMBLY



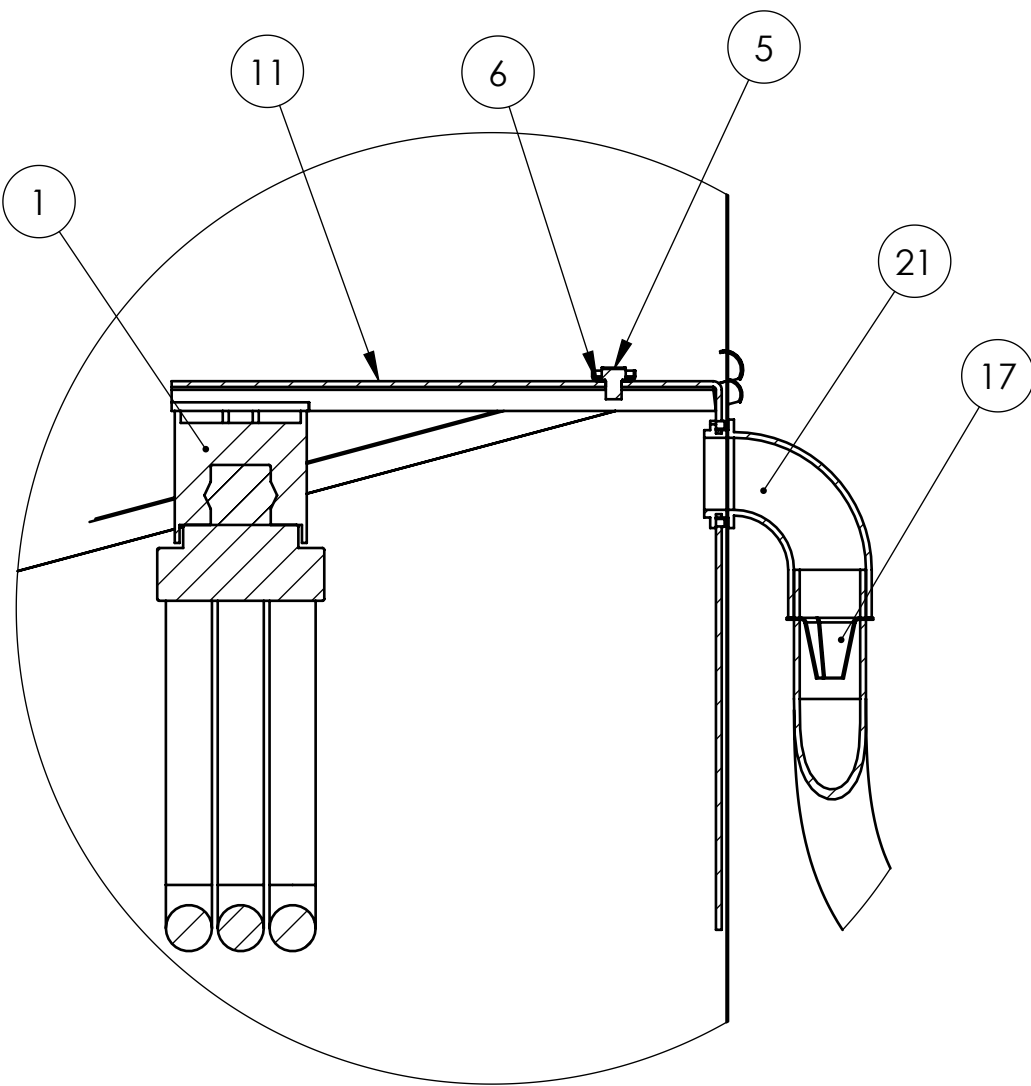
AURORA GLO DIFFUSER ASSEMBLY COMPONENTS				
ITEM NO.	QTY.	PART NO.	DESCRIPTION	MATERIAL
1	1	400281	290 DS GLASS ROUND SHALLOW	TEMPERED GLASS
2	1	492902	290 DS ROUND BOWL ROSE FRAME	STEEL
3	1	492900	290 DS ROUND BELT	STEEL
4	4	700781	M5 SHOULDER BOLT	STEEL

290 DS SOLATUBE
LIGHT KIT 26 WATT
COMPACT FLUORESCENT



SECTION H-H

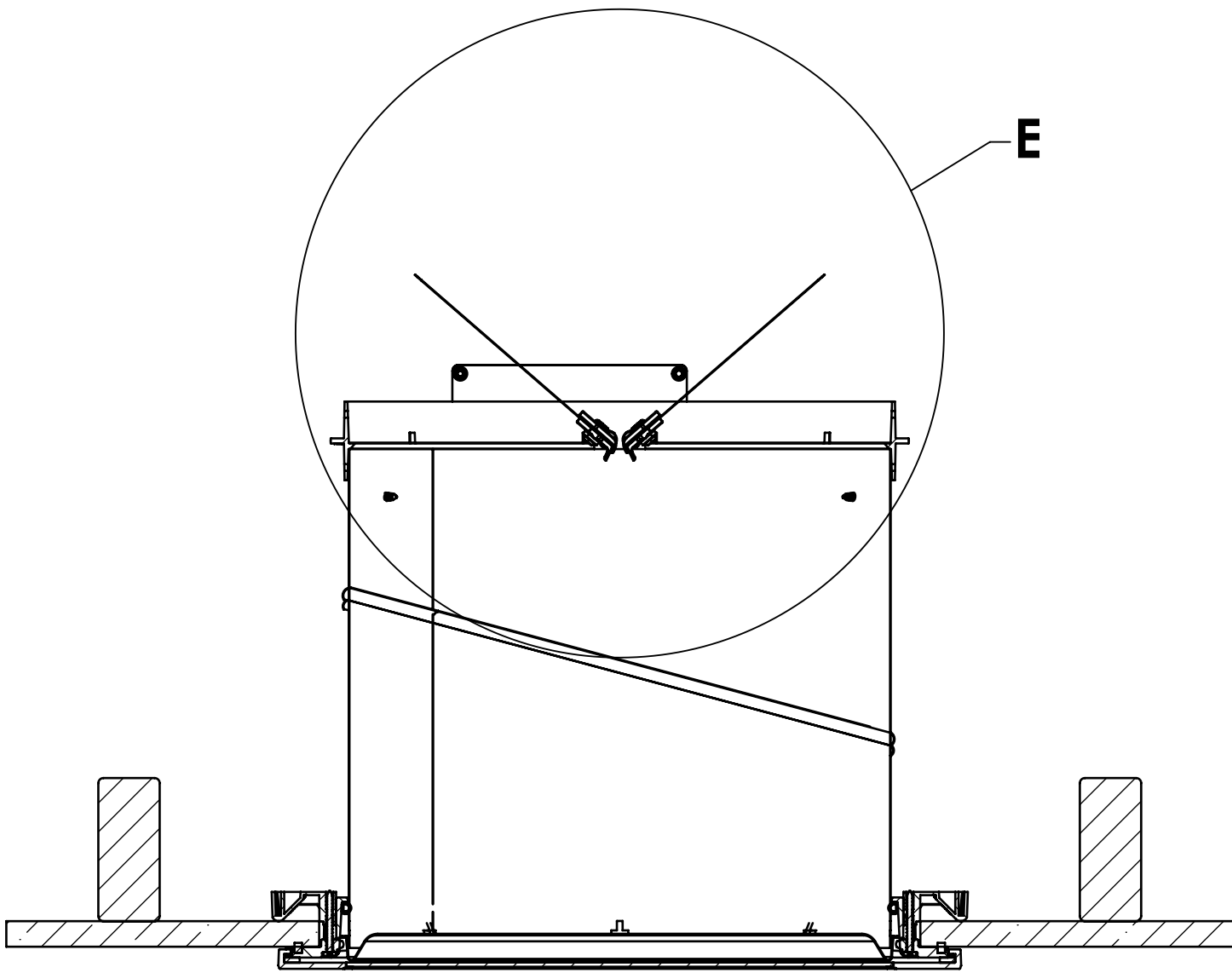
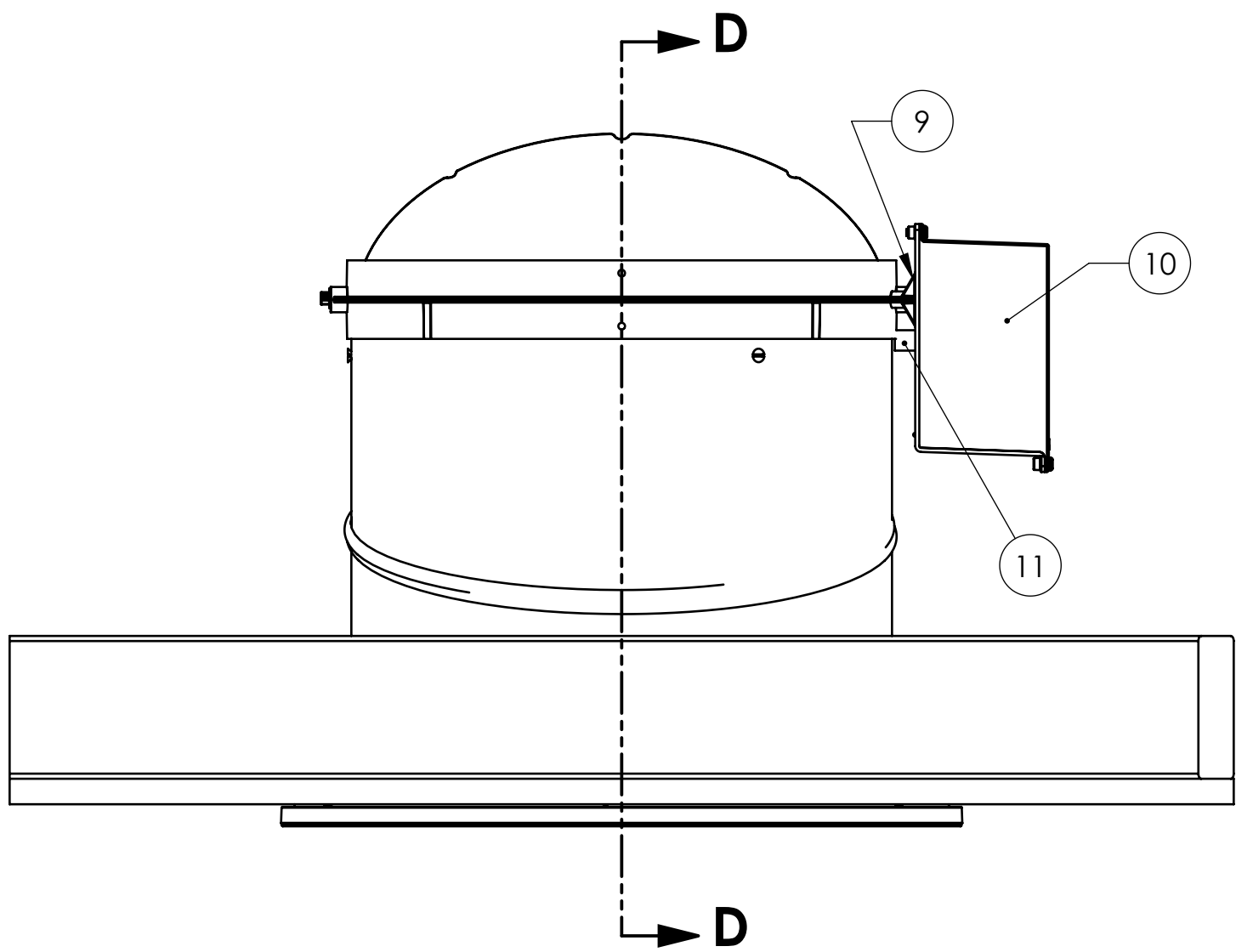
NOTE:
CFL (4-PIN TYPE) LIGHT ASSEMBLY SHOWN ASSEMBLED
TO 290DS BOTTOM ANGLE ADAPTER;
SCREW BASE CFL (SBCFL) OPTION ALSO AVAILABLE



DETAIL G
SCALE 1 : 2

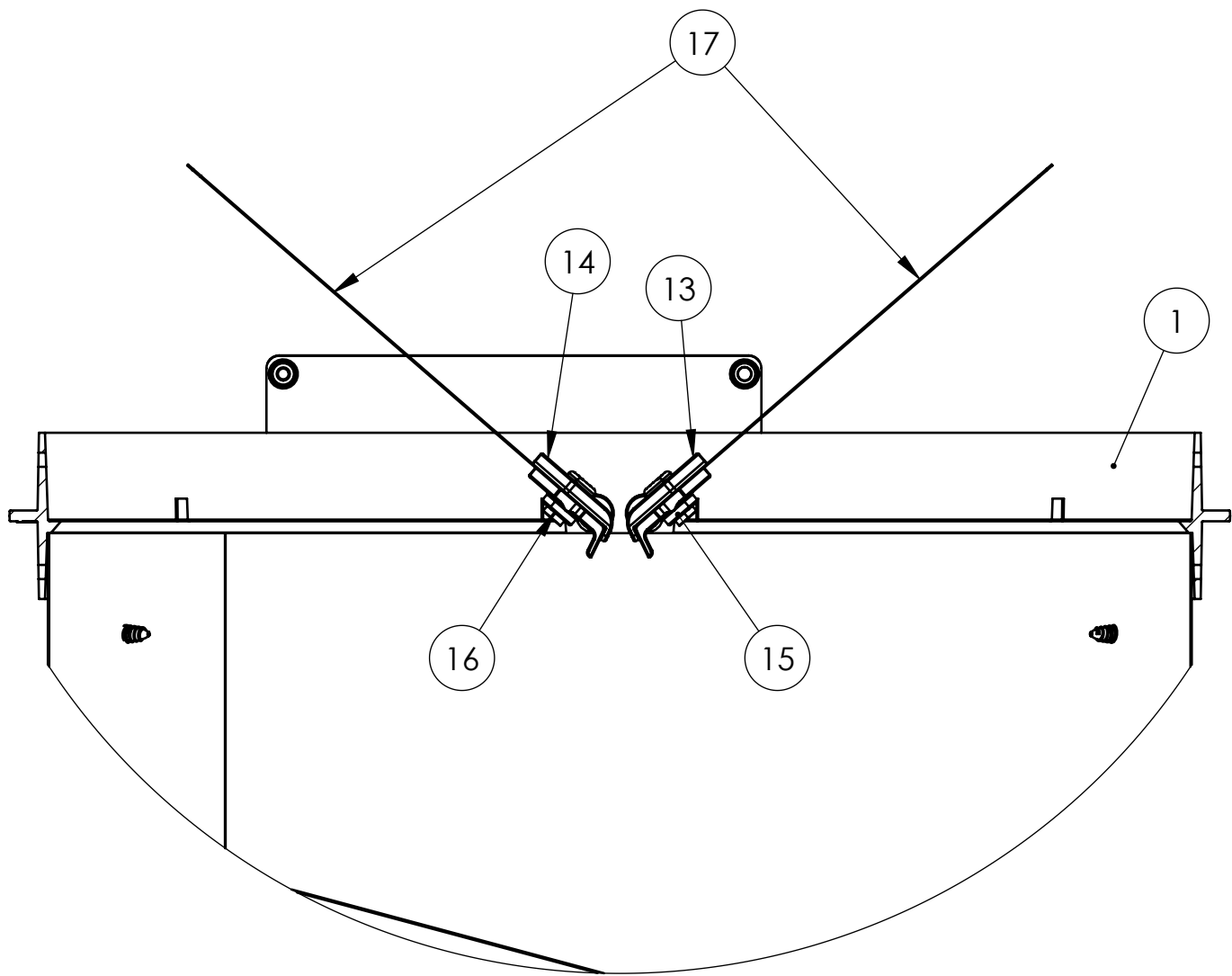
ITEM NO.	PART NUMBER	DESCRIPTION	QTY.
1	500110	LAMP HOLDER 4-PIN	1
2	500120	BALLAST, ELECTRIC 26W	1
3	500550	JUNCTION BOX 4" W/BACKET	1
4	500560	JUNCTION BOX 4" COVER	1
5	500650	SCREW #8-32 X 1/4"	1
6	500660	WASHER #8 GROUND CUP	1
7	500910	CONDUIT FLEXIBLE 3/8" X 48"	1
8	501040	WIRE LEAD BLACK 18 AWG 62" (NOT SHOWN)	1
9	501050	WIRE LEAD WHITE 18 AWG 62" (NOT SHOWN)	1
10	501060	WIRE LEAD GREEN 18 AWG 62" (NOT SHOWN)	1
11	501440	BRACKET CFL 26 WATT	1
12	501470	ZIP TIE, HELICAL WRAP (NOT SHOWN)	1
13	501500	WASHER FENDER 1/4" X 1-1/4" (NOT SHOWN)	1
14	500230	CONNECTOR 90 DEG 3/8	1
15	500240	CONNECTOR STRAIGHT 3/8	1
16	500530	SCREW HEX #8 X .75" (NOT SHOWN)	4
17	500540	BUSHING ANTI-SHORT RED	1
18	500630	NUT WIRE 73B (NOT SHOWN)	6
19	500640	SLEEVE CRIMP 10-18 GA (NOT SHOWN)	1
20	501070	SCREW GROUND 10-32 X .375	1
21	501080	CONDUIT FOAM SEAL 1/8" H X 3/4"W	4

290DS SOLATUBE
DAYLIGHT DIMMER



SECTION D-D

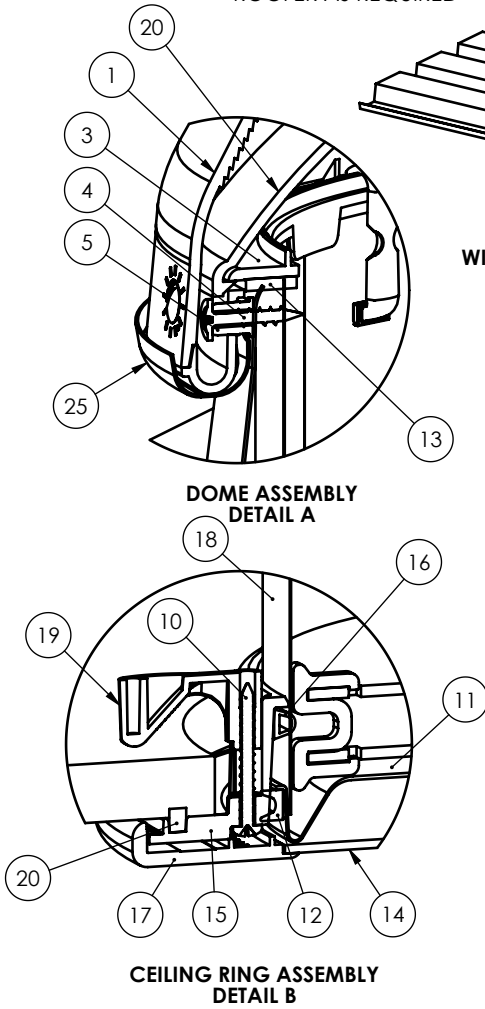
NOTE:
DAYLIGHT DIMMER ASSEMBLY SHOWN ASSEMBLED TO
290DS BOTTOM ANGLE ADAPTER



DETAIL E
SCALE 1 : 2

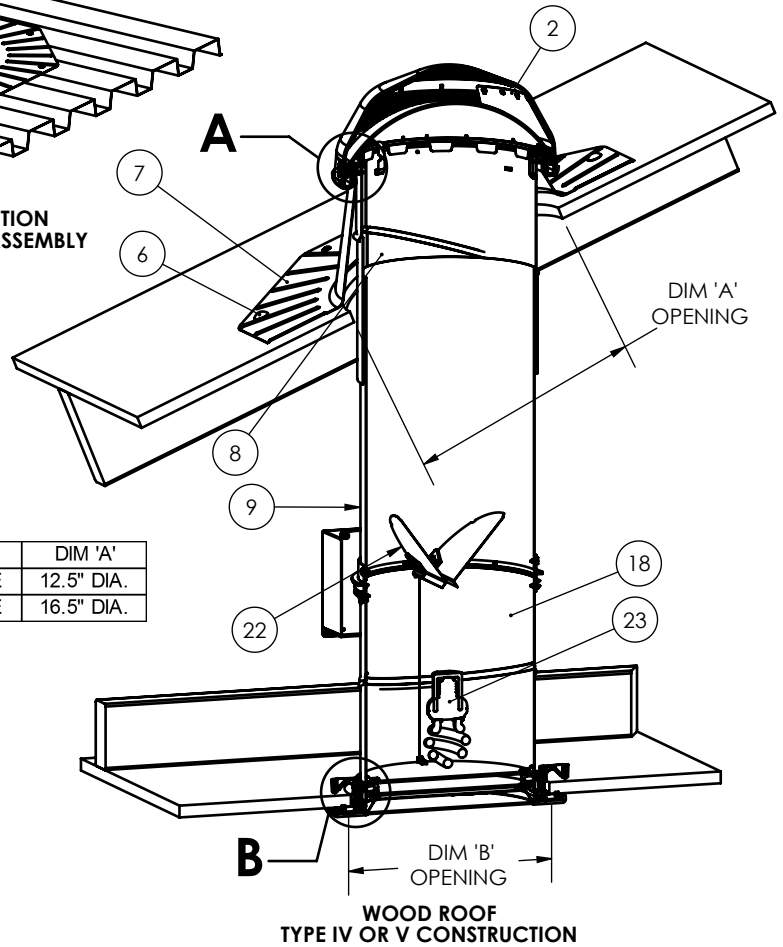
ITEM NO.	PART NUMBER	DESCRIPTION	QTY.
1	420780	RING 14" DAYLIGHT DIMMER	1
2	570005	POWER SUPPLY (NOT SHOWN)	1
3	570008	RETAINER, E-RING, 5/16 (NOT SHOWN)	4
4	570009	PCB, MOTOR CONTROL (NOT SHOWN)	1
5	570010	MOTOR GEARED (NOT SHOWN)	1
6	570015	CAM, DRIVE MECHANISM (NOT SHOWN)	1
7	570016	DOG, DRIVE MECHANISM (NOT SHOWN)	1
8	570018	LID, DRIVE MECHANISM (NOT SHOWN)	1
9	570020	MOUNT, JUNCTION BOX	1
10	570021	COVER, JUNCTION BOX	1
11	570022	SPACER, NYLON 1/2"	1
12	570024	CABLE CLAMP, DLD (NOT SHOWN)	1
13	570025	CLIP, RIGHT	2
14	570026	CLIP, LEFT	2
15	570027	CLIP, BACK RIGHT	2
16	570028	CLIP, BACK LEFT	2
17	570031	DISK, 14" DIMMER	2
18	721050	SCREW TRILOB #4 X 3/16 (NOT SHOWN)	4
19	721055	SCREW TRILOB #6 X 3/8 (NOT SHOWN)	8
20	721060	SCREW TRILOB #8 X 3/8 (NOT SHOWN)	8
21	721065	SCREW TRILOB #8 X 1.0" (NOT SHOWN)	4
22	721070	SCREW TRILOB #12 X 1/2 (NOT SHOWN)	2

NOTE:
FLASHING PROVIDED BY
SOLATUBE, WEATHERPROOFING
DETERMINED BY SOLATUBE
GENERAL CONTRACTOR
AND/OR PROFESSIONAL
ROOFER AS REQUIRED



**METAL ROOF
TYPE II OR III CONSTRUCTION
WITH STANDARD DIFFUSER ASSEMBLY**

	DIM 'A'
160 DS SOLATUBE	12.5" DIA.
290 DS SOLATUBE	16.5" DIA.



TURRET EXTENSION FOR FLASHING

NO-PITCH FLASHING

PITCHED FLASHING

CURB FLASHING

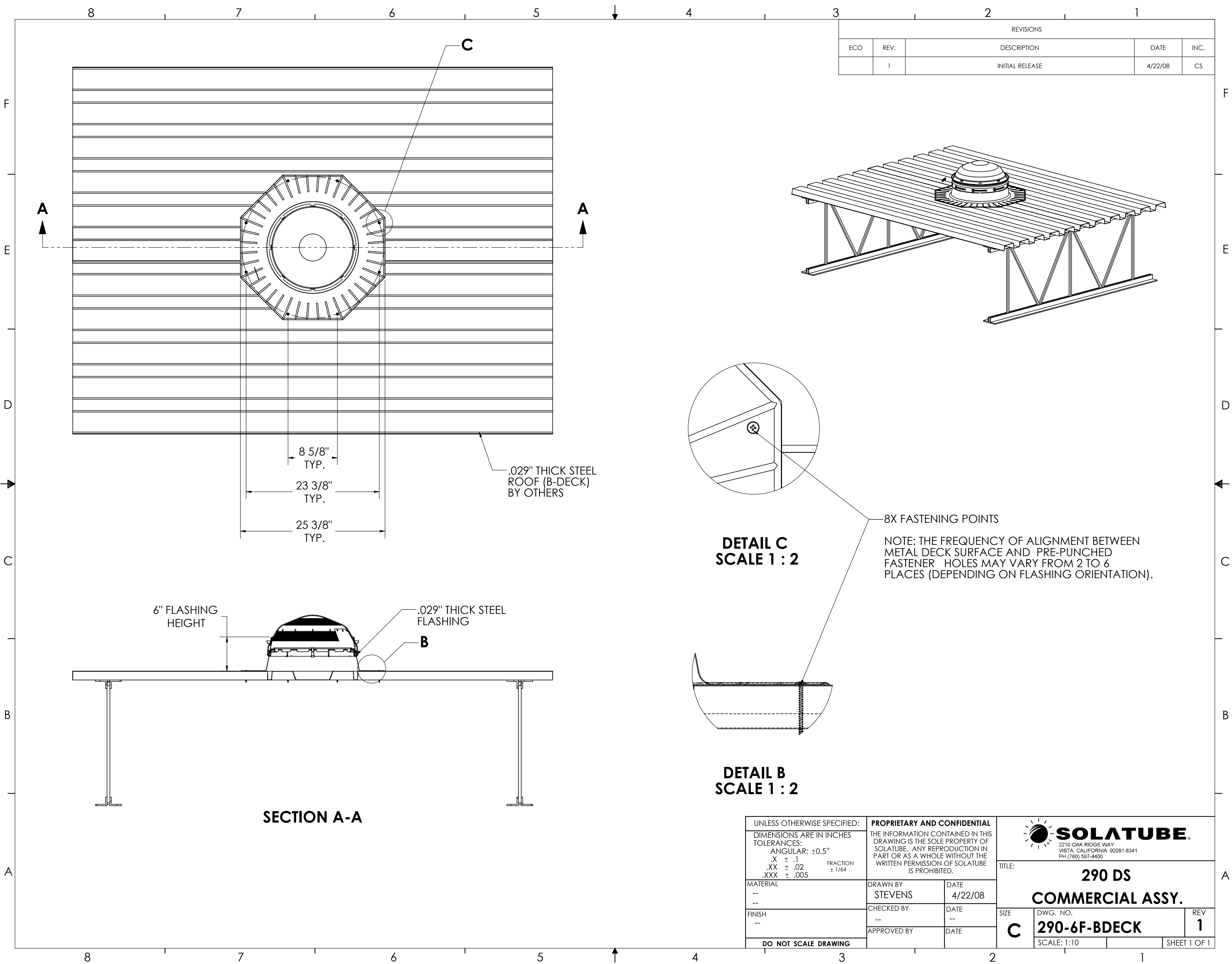
UNIVERSAL TILE FLASHING

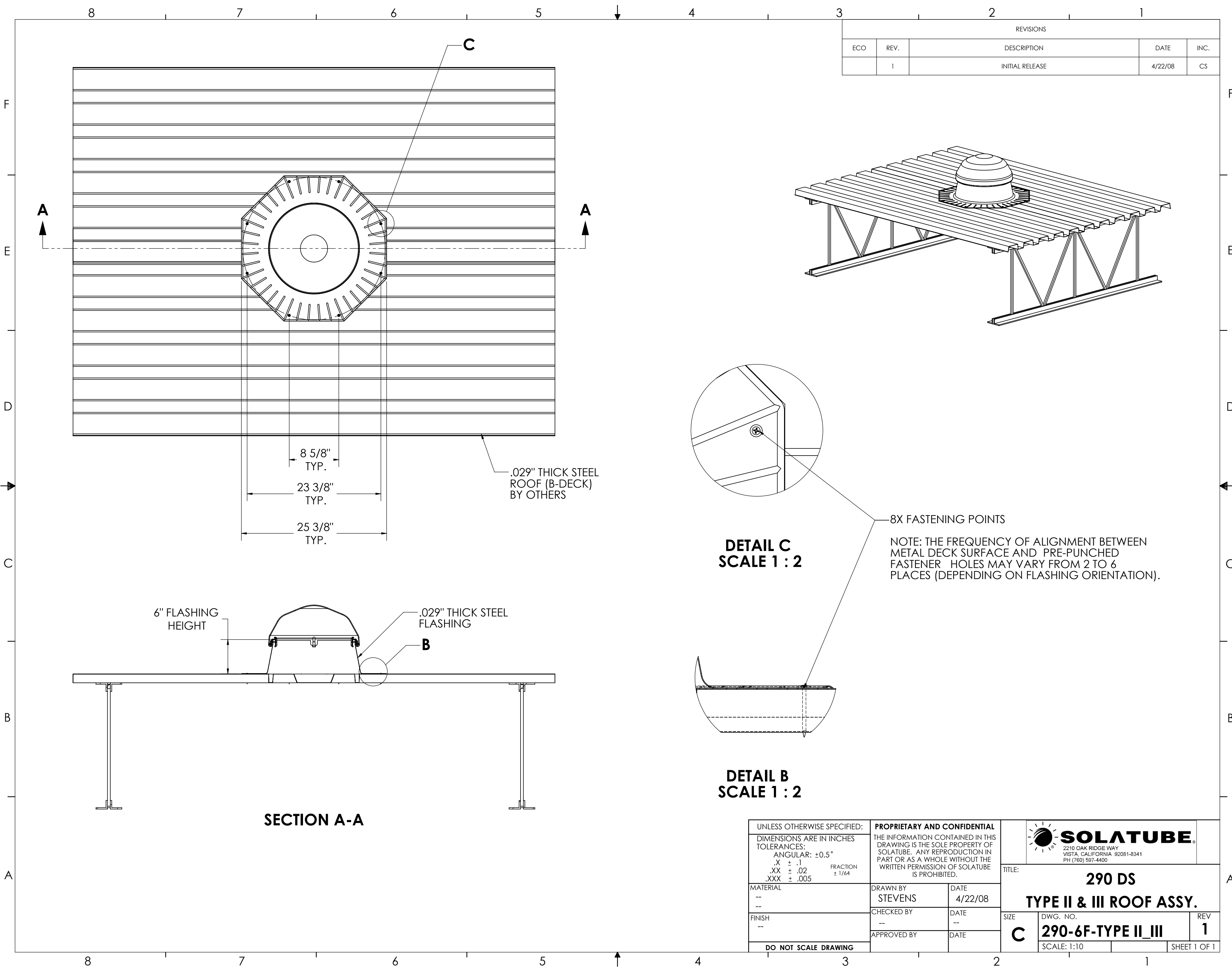
ITEM NO.	QTY.	DESCRIPTION
1	1	OUTER DOME
2	1	LIGHT TRACKER
3	1	DOME RING
4	4	SCREW #8 X 1"
5	4	DOME RING SPACER
6*	8	SCREW #10 X 2" SMS
7	1	FLASHING
8	1	TOP TUBE
9	1	TUBE 16" EXTENSION
10	4	SCREW #8 X 1.5" SMS
11	1	EFFECT LENS
12	1	EFFECT LENS SEAL
13	1	DOME RING SEAL
14	1	DIFFUSER PANEL
15	1	CEILING RING
16	1	CEILING RING 'D' SEAL
17	1	DRESS RING
18	1	BOTTOM TUBE
19	4	CLAMP
20	1	CEILING RING RECTANGULAR SEAL

OPTIONAL COMPONENTS		
ITEM NO.	QTY.	DESCRIPTION
21	1	INNER DOME
22	1	DAYLIGHT DIMMER
23	1	LIGHT FIXTURE
24	1	TURRET EXTENSION
25	1	DOME EDGE PROTECTION BAND


* USE (8) #10 TEK SCREWS FOR METAL ROOF

FIGURE 1 - 160 DS & 290 DS SOLATUBE WITH DETAILS

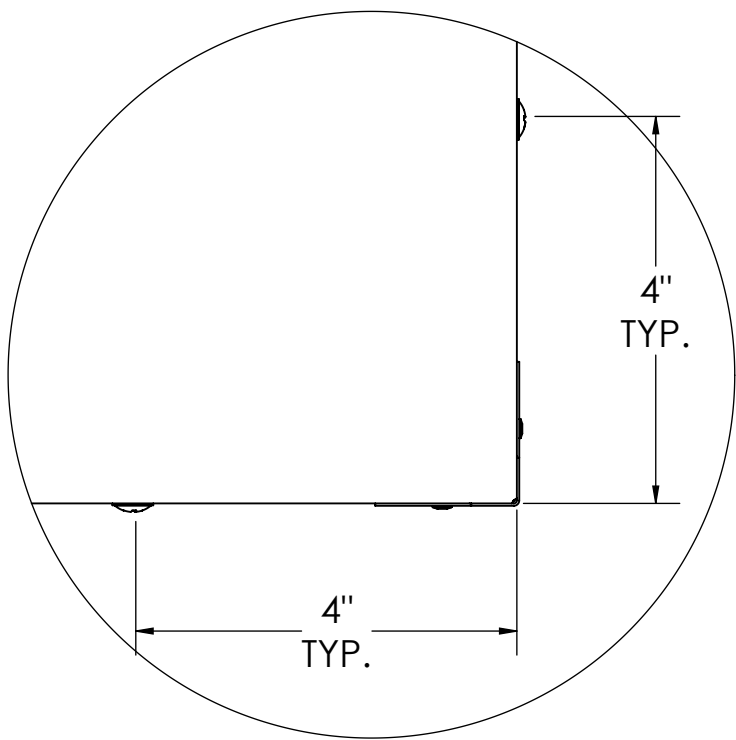
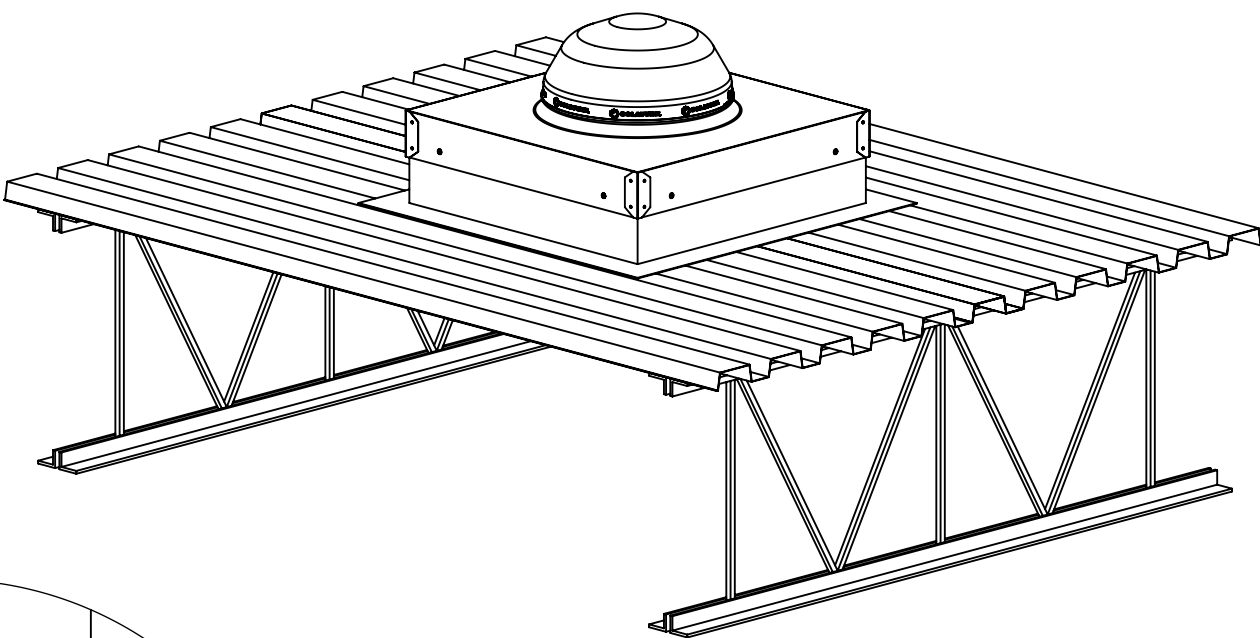




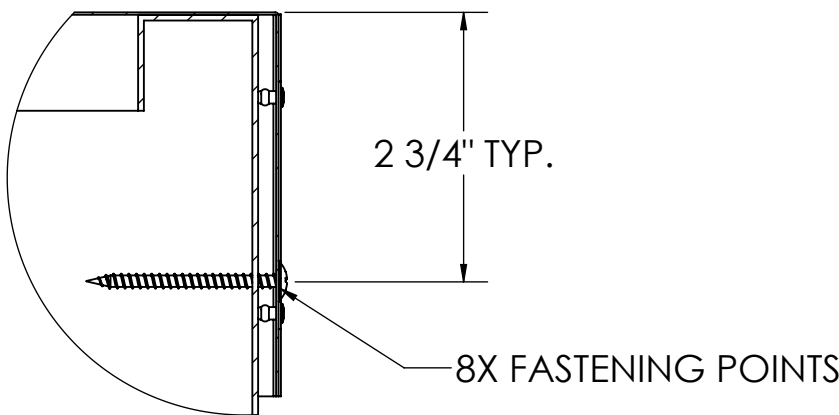
REVISIONS				
ECO	REV.	DESCRIPTION	DATE	INC.
	1	INITIAL RELEASE	4/22/08	CS

UNLESS OTHERWISE SPECIFIED: DIMENSIONS ARE IN INCHES TOLERANCES: ANGULAR: $\pm 0.5^\circ$.X $\pm .1$.XX $\pm .02$.XXX $\pm .005$ FRACTION $\pm 1/64$		PROPRIETARY AND CONFIDENTIAL THE INFORMATION CONTAINED IN THIS DRAWING IS THE SOLE PROPERTY OF SOLATUBE. ANY REPRODUCTION IN PART OR AS A WHOLE WITHOUT THE WRITTEN PERMISSION OF SOLATUBE IS PROHIBITED.		 SOLATUBE® 2210 OAK RIDGE WAY VISTA, CALIFORNIA 92081-8341 PH (760) 597-4400	
MATERIAL ---		DRAWN BY STEVENS	DATE 4/22/08	TITLE: 290 DS TYPE II & III ROOF ASSY.	
FINISH ---		CHECKED BY ---	DATE --	SIZE C	DWG. NO. 290-6F-TYPE II_III
DO NOT SCALE DRAWING		APPROVED BY	DATE	SCALE: 1:10	REV 1
				SHEET 1 OF 1	


REVISIONS				
ECO	REV.	DESCRIPTION	DATE	INC.
	1	INITIAL RELEASE	4/22/08	CS
	2		10/12/2015	CS

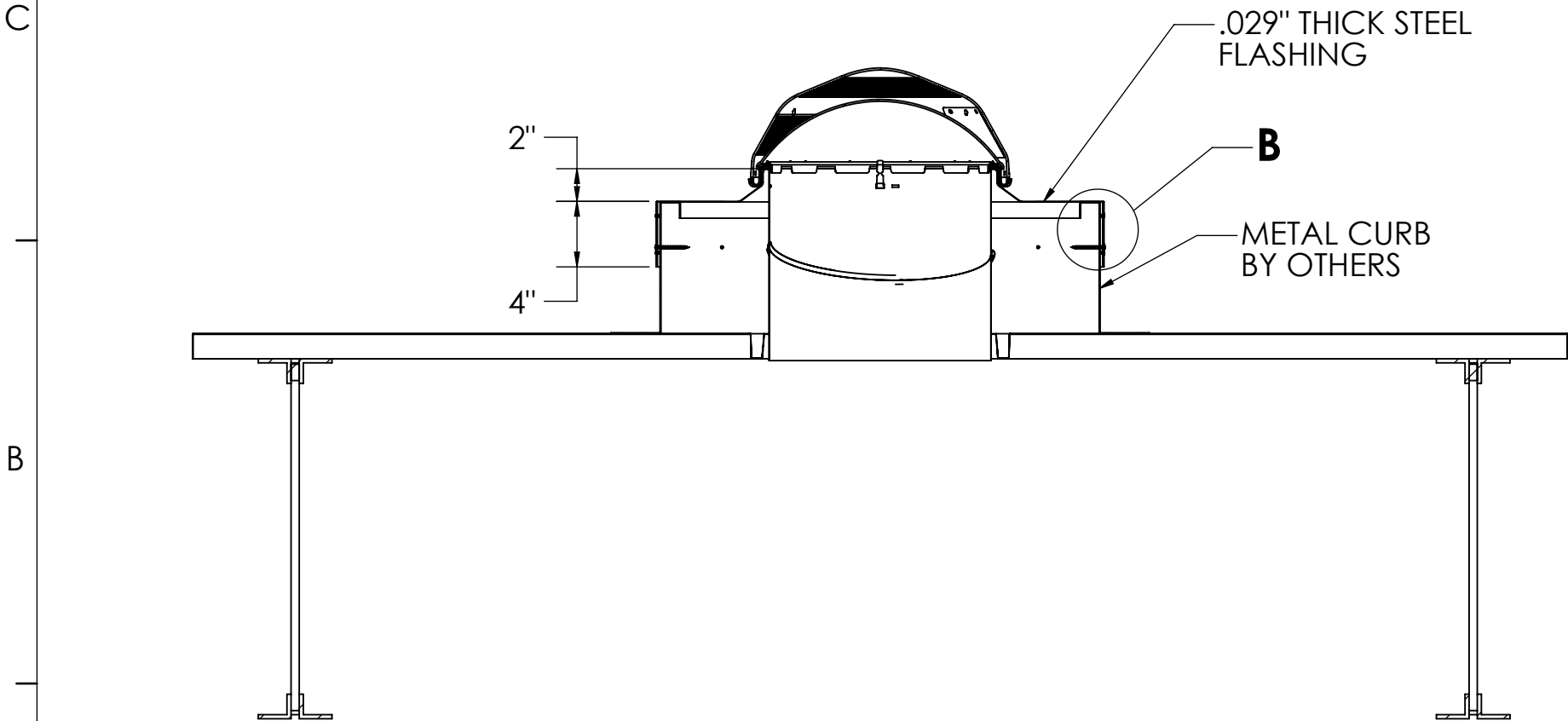
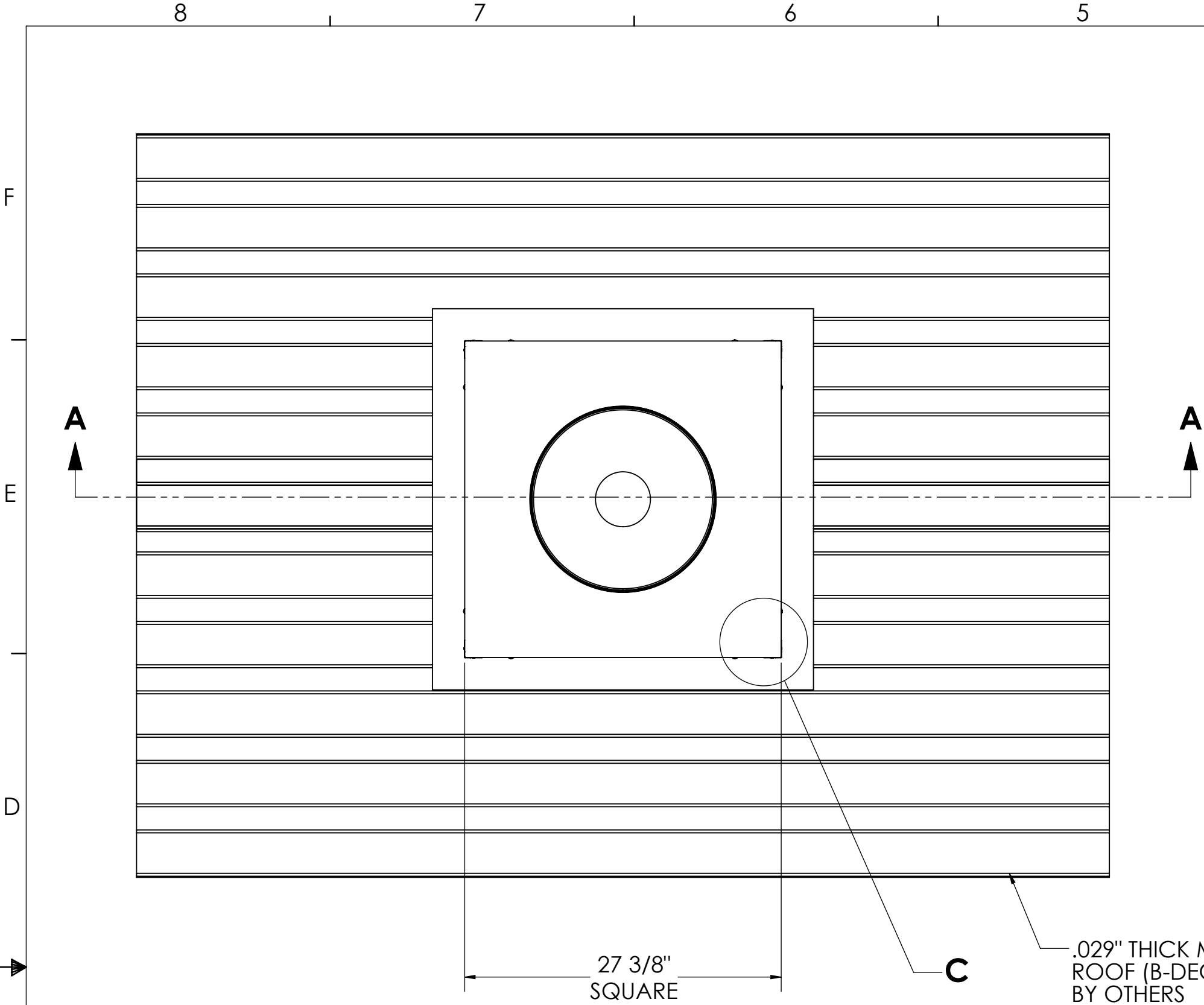


DETAIL C
SCALE 1 : 2
TYP.



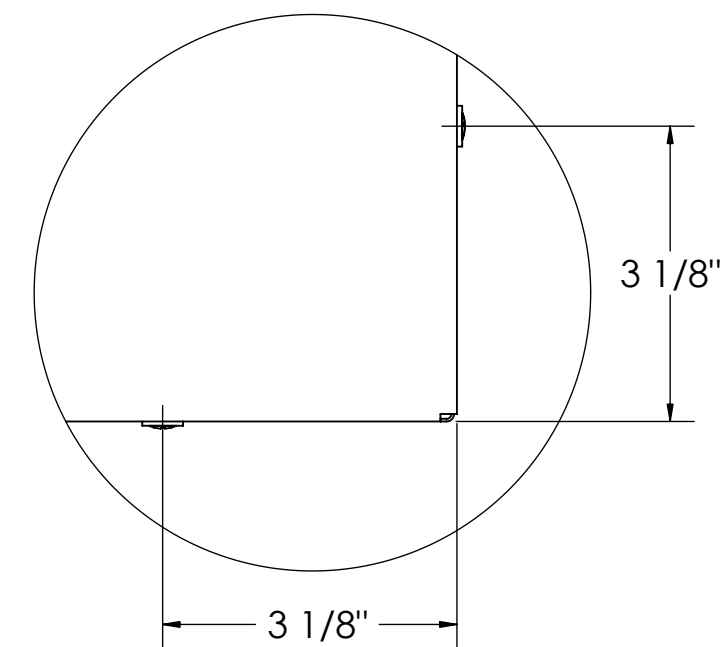
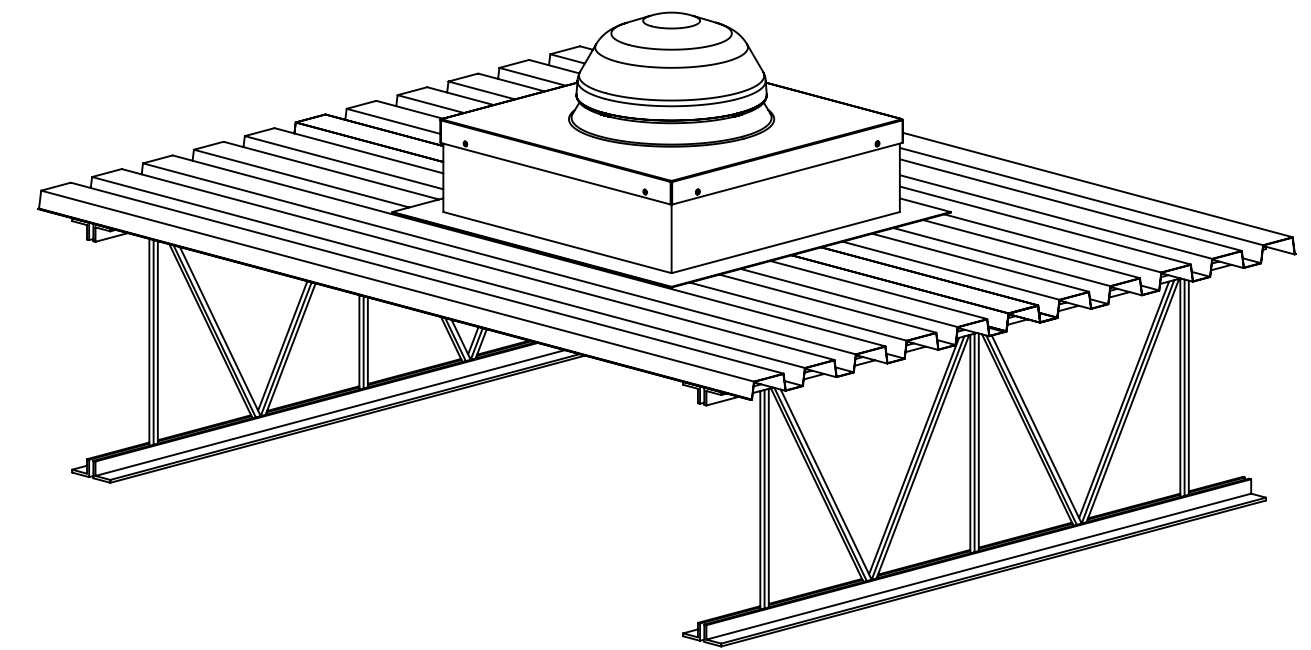
DETAIL B
SCALE 1 : 2

UNLESS OTHERWISE SPECIFIED:		PROPRIETARY AND CONFIDENTIAL		<div></div> <div>SOLATUBE 2210 OAK RIDGE WAY VISTA, CALIFORNIA 92081-8341 PH (760) 597-4400</div>		
DIMENSIONS ARE IN INCHES TOLERANCES: ANGULAR: ±0.5° .X ± .1 .XX ± .02 .XXX ± .005 FRACTION ± 1/64		THE INFORMATION CONTAINED IN THIS DRAWING IS THE SOLE PROPERTY OF SOLATUBE. ANY REPRODUCTION IN PART OR AS A WHOLE WITHOUT THE WRITTEN PERMISSION OF SOLATUBE IS PROHIBITED.		TITLE: 290 DS COMMERCIAL ASSY.		
MATERIAL -- --		DRAWN BY STEVENS	DATE 4/22/08	SIZE C	DWG. NO. 290-CURB-BDECK	REV 2
FINISH --		CHECKED BY --	DATE --		SCALE: 1:10	SHEET 1 OF 1
DO NOT SCALE DRAWING		APPROVED BY	DATE			

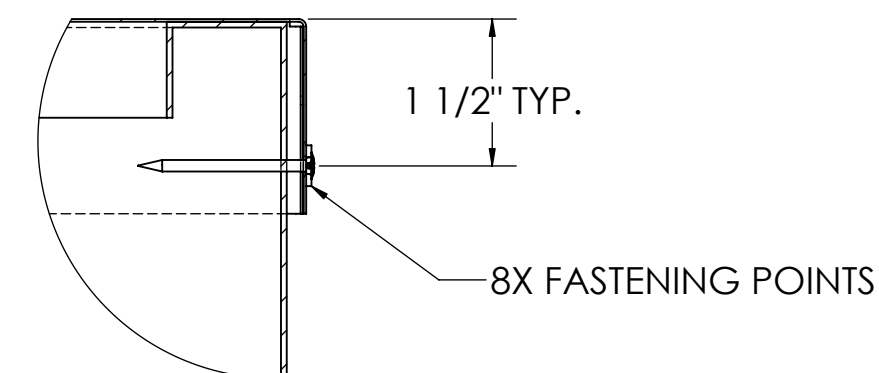


SECTION A-A

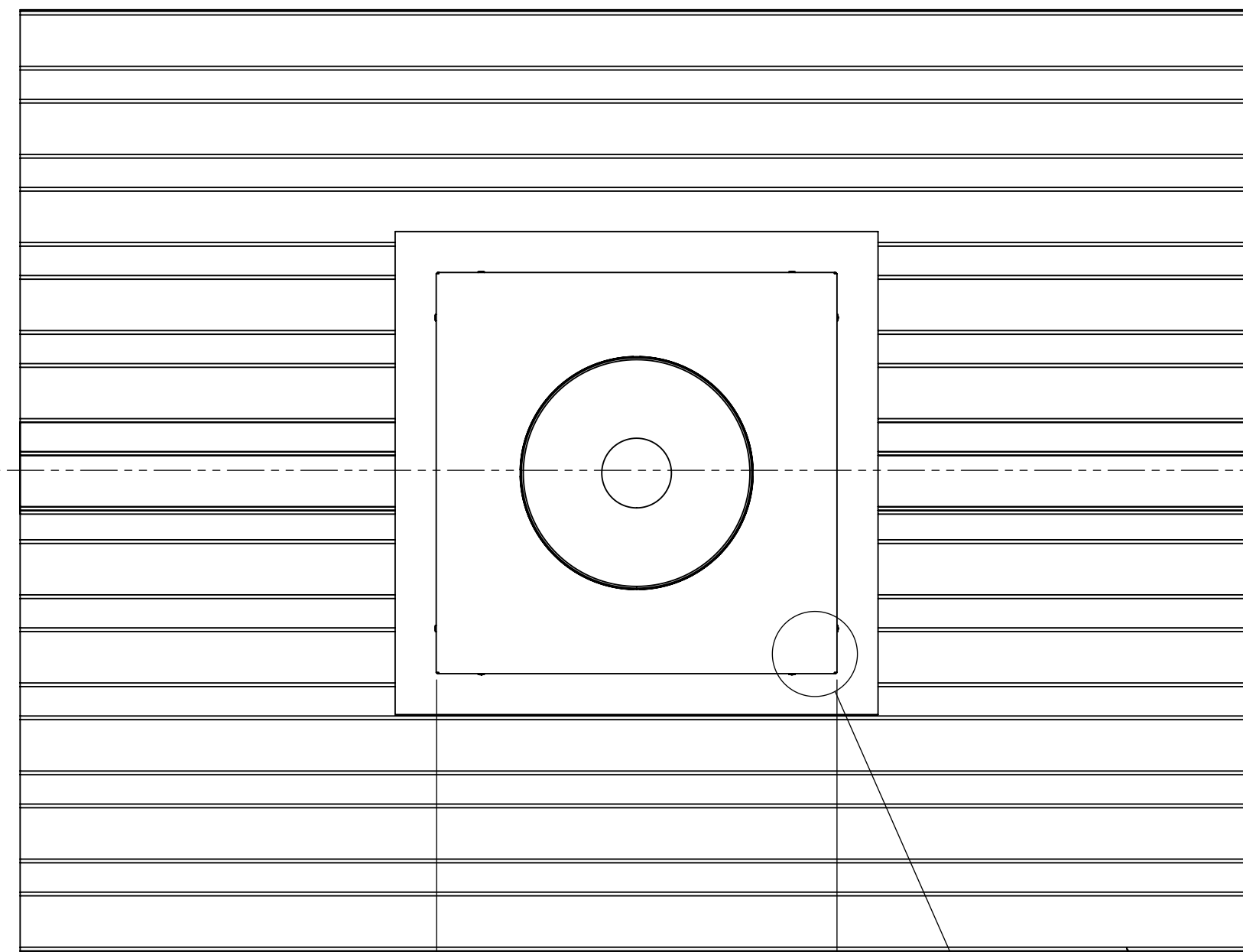
REVISIONS				
ECO	REV.	DESCRIPTION	DATE	INC.
	1	INITIAL RELEASE	4/22/08	CS



DETAIL C
SCALE 1 : 2
TYP.

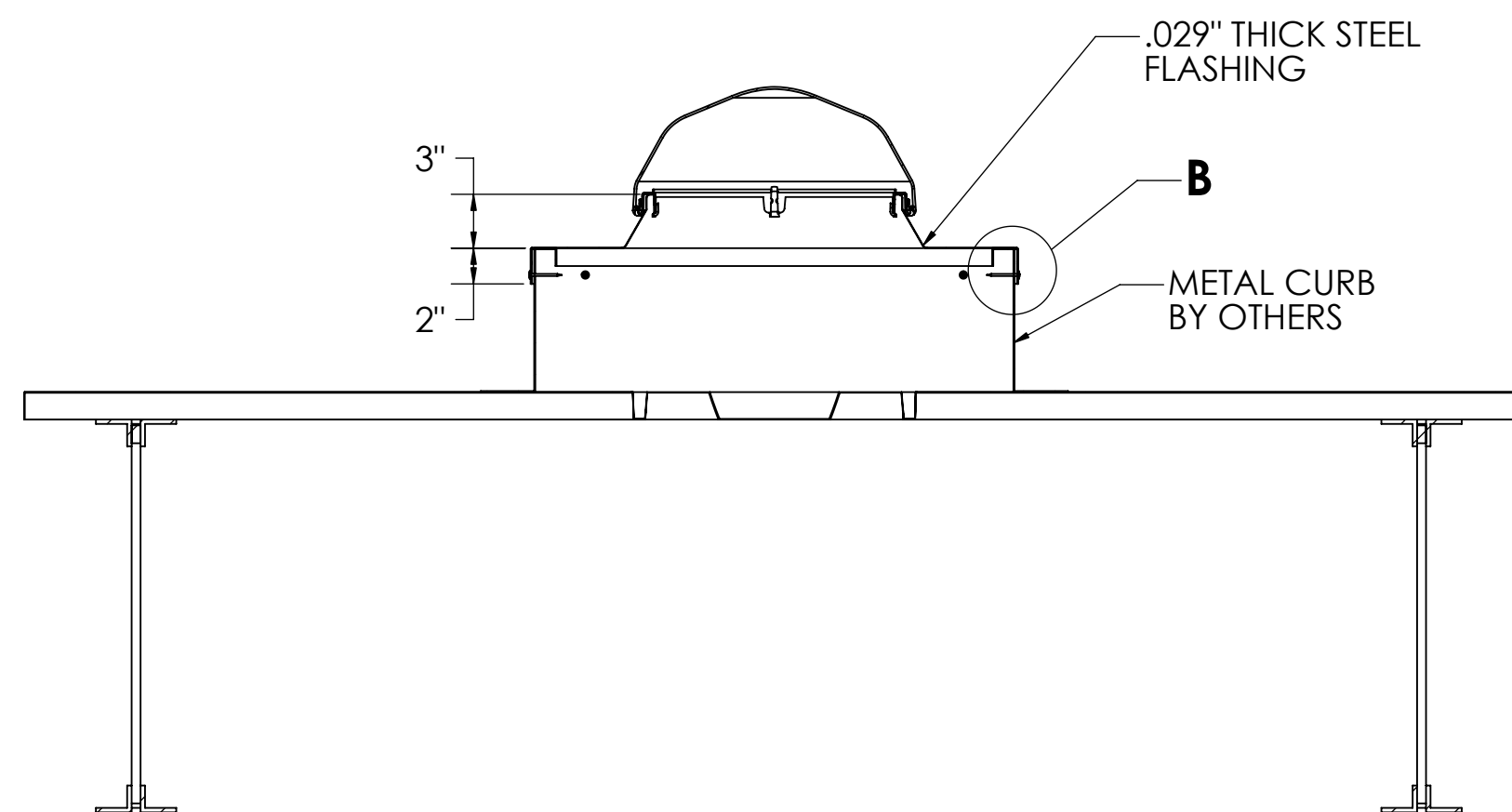


DETAIL B
SCALE 1 : 2




27 1/4"
SQUARE

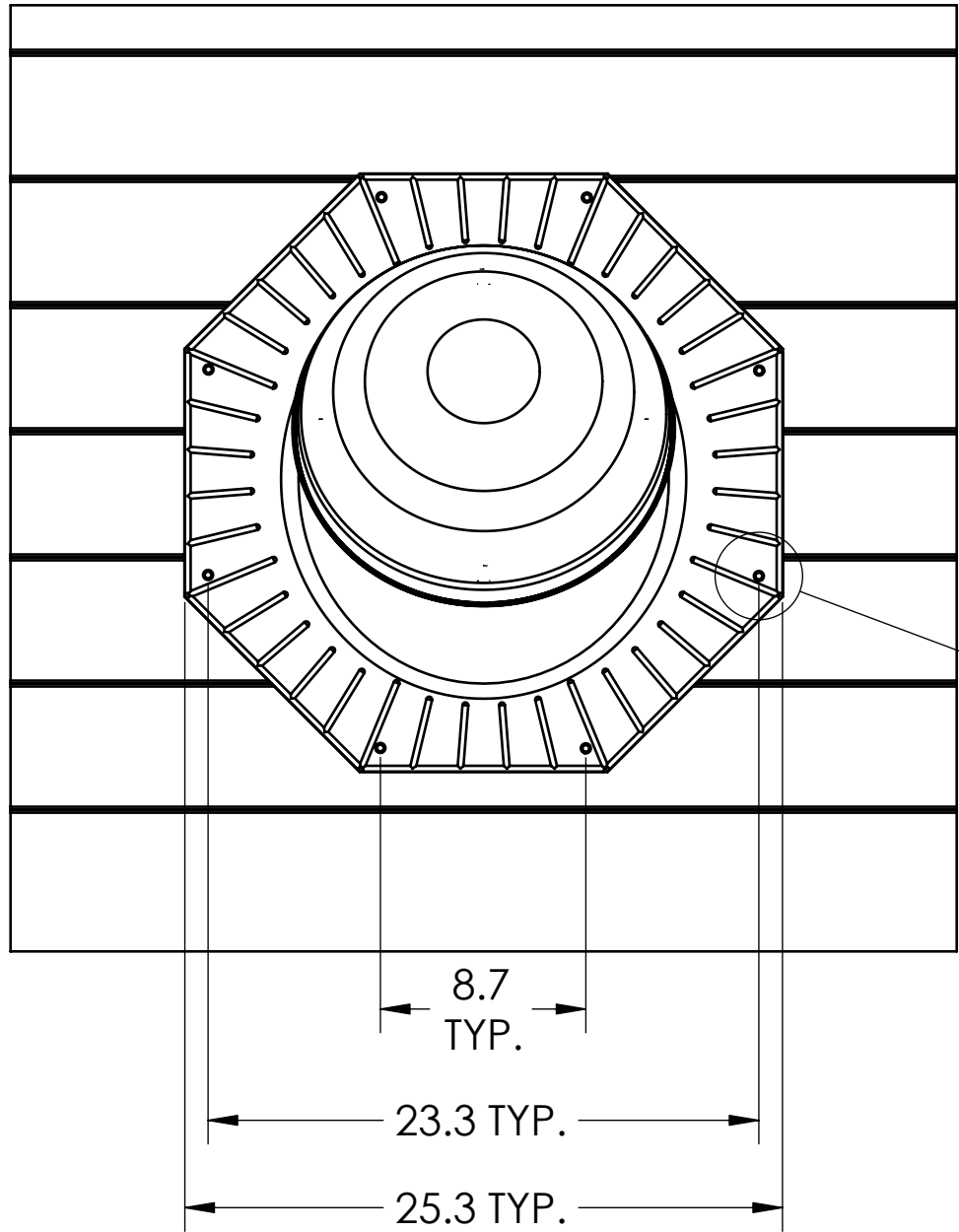
— .029" THICK METAL
ROOF (B-DECK)
BY OTHERS



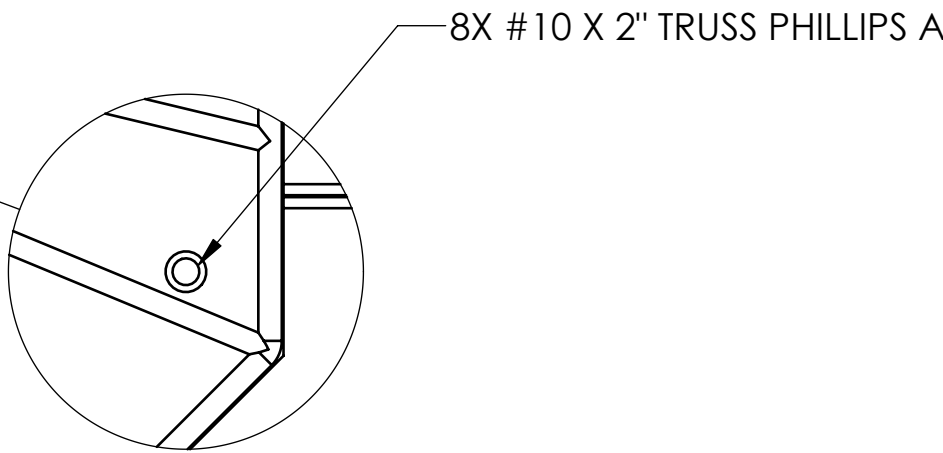
SECTION A-A

UNLESS OTHERWISE SPECIFIED:		PROPRIETARY AND CONFIDENTIAL		<div> SOLATUBE®</div> <div>2210 OAK RIDGE WAY VISTA, CALIFORNIA 92081-8341 PH (760) 597-4400</div>	
DIMENSIONS ARE IN INCHES TOLERANCES: ANGULAR: ±0.5° .X ± .1 .XX ± .02 .XXX ± .005		THE INFORMATION CONTAINED IN THIS DRAWING IS THE SOLE PROPERTY OF SOLATUBE. ANY REPRODUCTION IN PART OR AS A WHOLE WITHOUT THE WRITTEN PERMISSION OF SOLATUBE IS PROHIBITED.		TITLE: 290 DS TYPE II & III ROOF ASSY.	
MATERIAL -- --		DRAWN BY STEVENS	DATE 4/22/08		
FINISH --		CHECKED BY --	DATE --	SIZE C	
DO NOT SCALE DRAWING		APPROVED BY	DATE		
				SCALE: 1:10	SHEET 1 OF 1

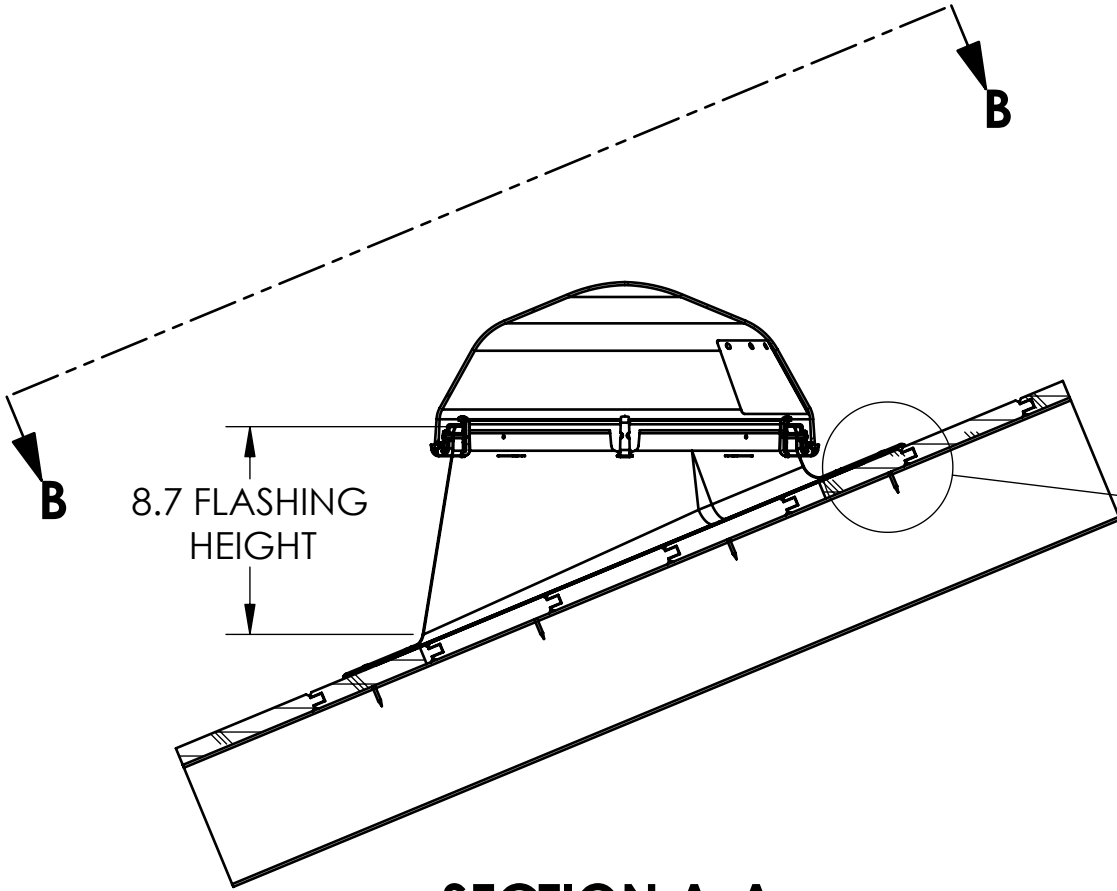
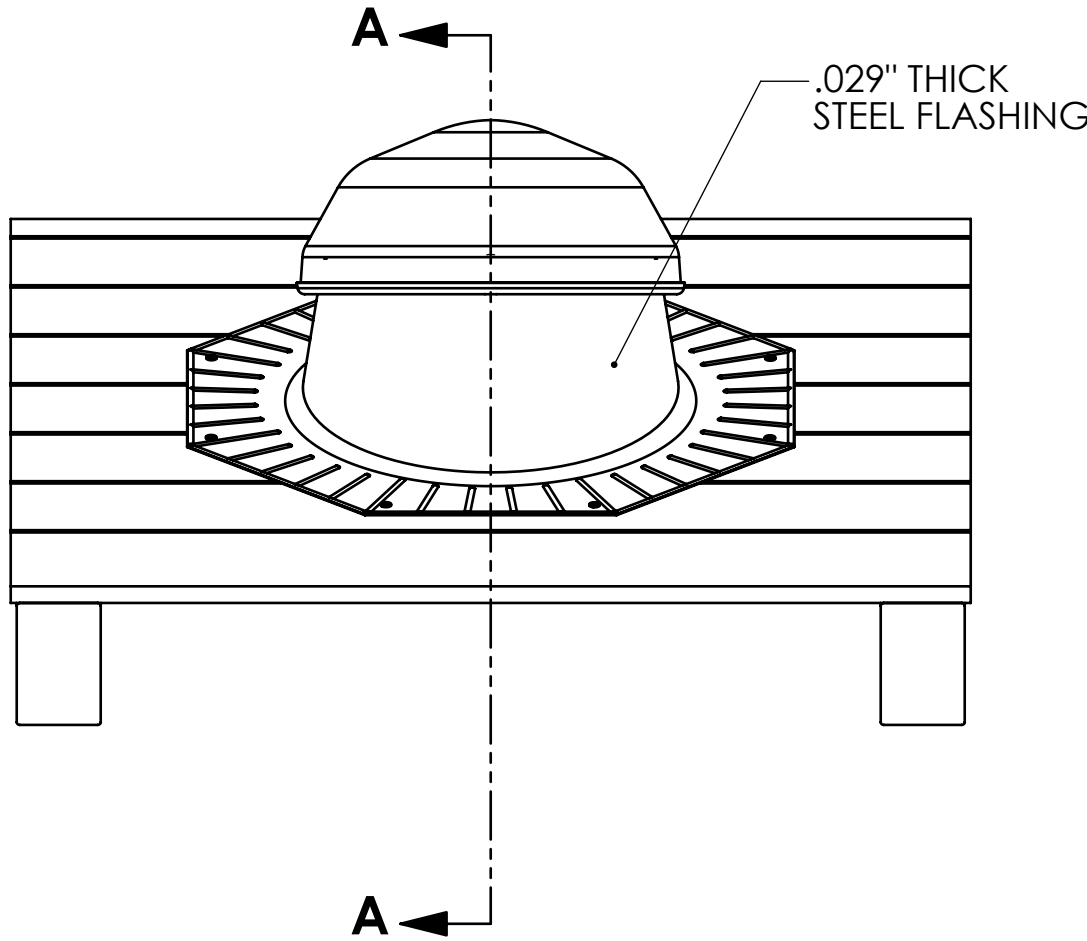
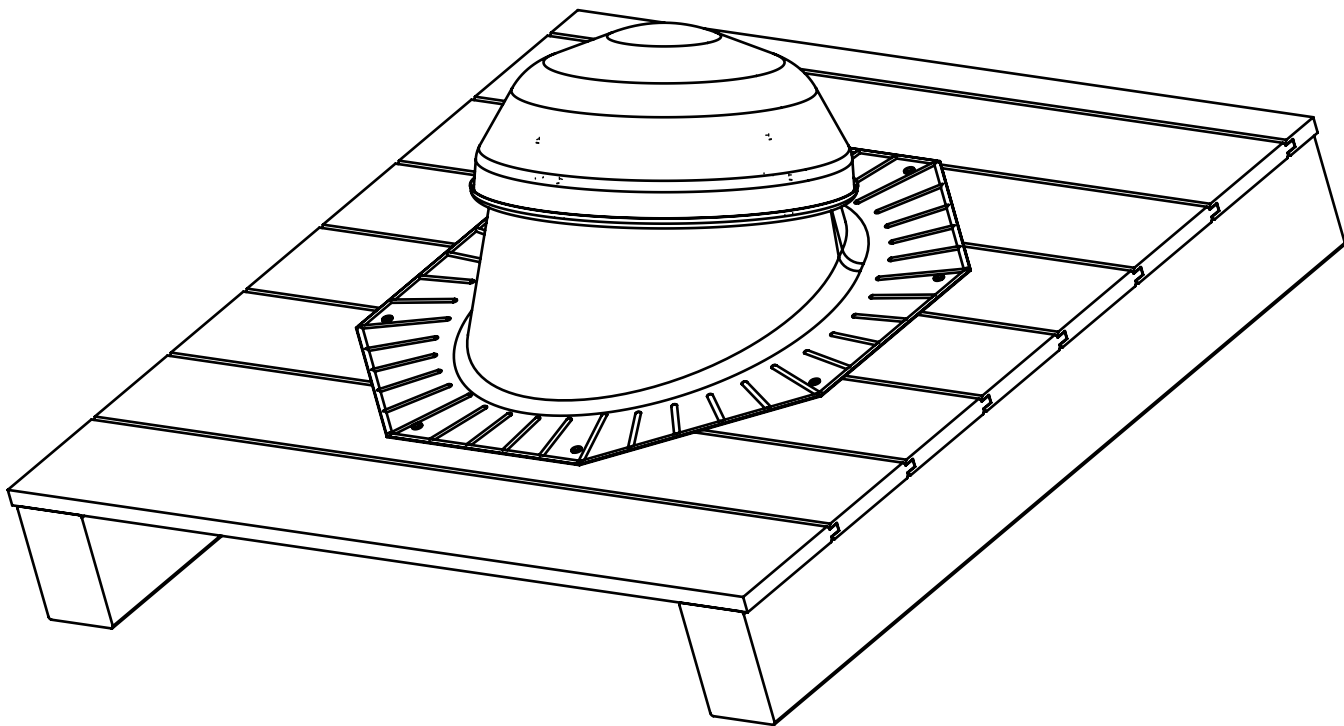
REVISIONS				
ECO	REV.	DESCRIPTION	DATE	INC.
	1	INITIAL RELEASE	4/30/2008	CS



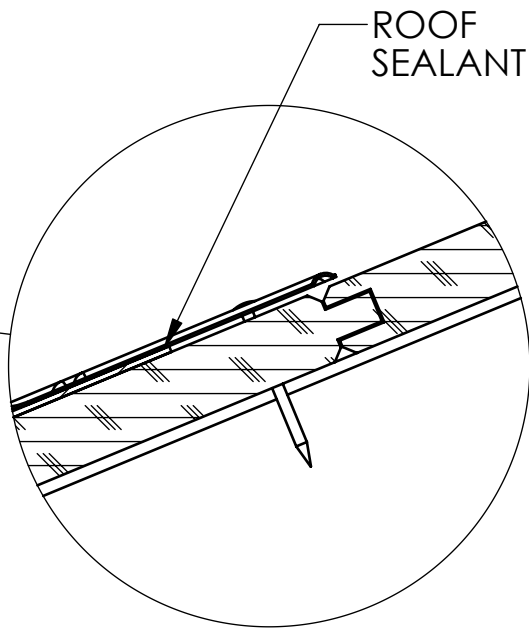
SECTION B-B




DETAIL D
SCALE 1 : 2



SECTION A-A



DETAIL C
SCALE 1 : 2

UNLESS OTHERWISE SPECIFIED:		PROPRIETARY AND CONFIDENTIAL		<div></div> <div>SOLATUBE® 2210 OAK RIDGE WAY VISTA, CALIFORNIA 92081-8341 PH (760) 597-4400</div>		
TOLERANCES ANGULAR: ±0.5° INCH MILLIMETER .X ± .1 [.X] ± 2.5 .XX ± .01 [.XX] ± .25 .XXX ± .005 [.XXX] ± .12		THE INFORMATION CONTAINED IN THIS DRAWING IS THE SOLE PROPERTY OF SOLATUBE. ANY REPRODUCTION IN PART OR AS A WHOLE WITHOUT THE WRITTEN PERMISSION OF SOLATUBE IS PROHIBITED.		TITLE: 290 DS TYPE IV (T & G) ROOF ASSY.		
MATERIAL -- --		DRAWN BY STEVENS	DATE 4/30/08	SIZE C	DWG. NO. 290-PF-TYPE IV	REV 1
FINISH --		CHECKED BY --	DATE --		SCALE: 1:8	SHEET 1 OF 1
DO NOT SCALE DRAWING		APPROVED BY --	DATE --			