

MODEL DESIGNATION: Simonton Impact Resistant Horizontal Slider Series 42-19 Vinyl Window

MAXIMUM OVERALL NOMINAL SIZE: Single up to 60" x 52"

DESIGN PRESSURE RATING: Positive: 50.0 PSF
Negative: 50.0 PSF

USABLE CONFIGURATIONS: XX

GENERAL DESCRIPTION: The head, sill, and side jambs are extruded PVC. The wall thickness through which the anchor screw penetrates is a minimum of 0.070".



05/21/2024
LUCAS A. TURNER, P.E.
FL PE # 58201
TURNER ENGINEERING &
CONSULTING, INC.
(COA # 29779)
2428 OLD NATCHEZ TRACE
TRAIL, CAMDEN, TN 38320
PH. 941-380-1574

REV. #	REVISIONS:	REVISED BY:	DATE:
1	ADDED 1X INSTALLATION	L.A.T.	01/31/15
2	ADDED TEMPERED OPTION	LMH	03/03/16
3	UPDATED FOR 7TH EDITION 2020 FBC.	LMH	12/06/20
4	UPDATED TO CURRENT FBC.	KKB	05/21/24
.	.	.	.

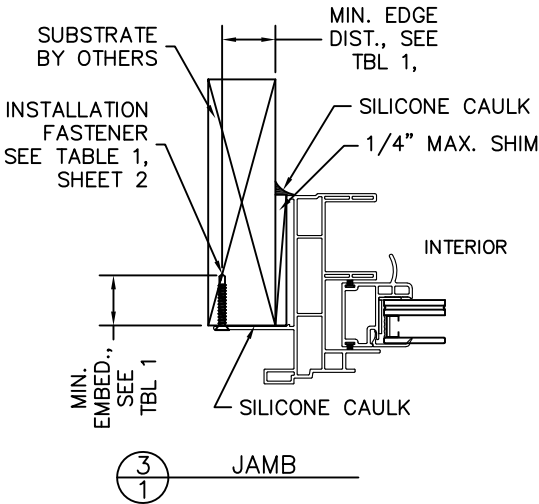
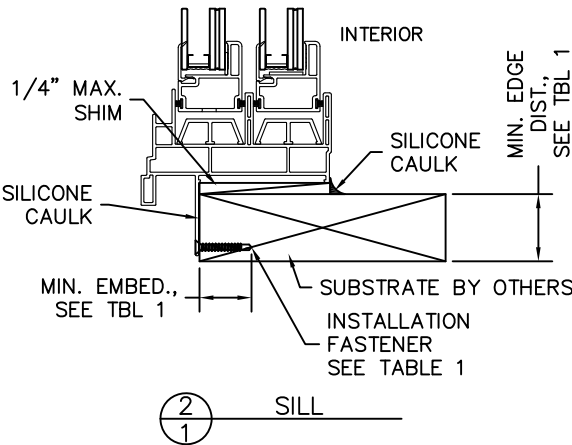
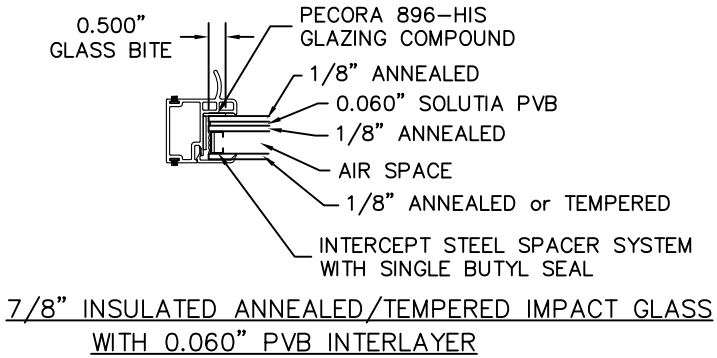
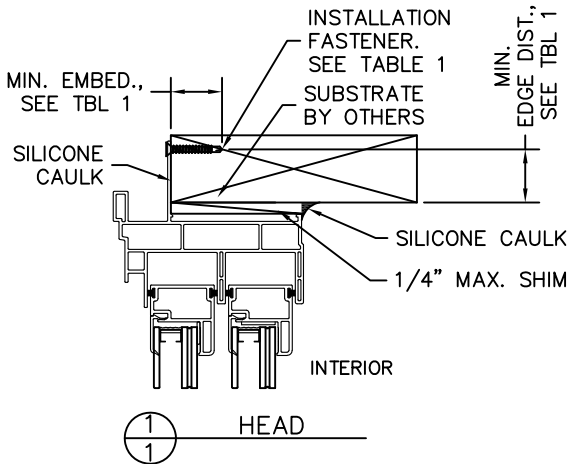
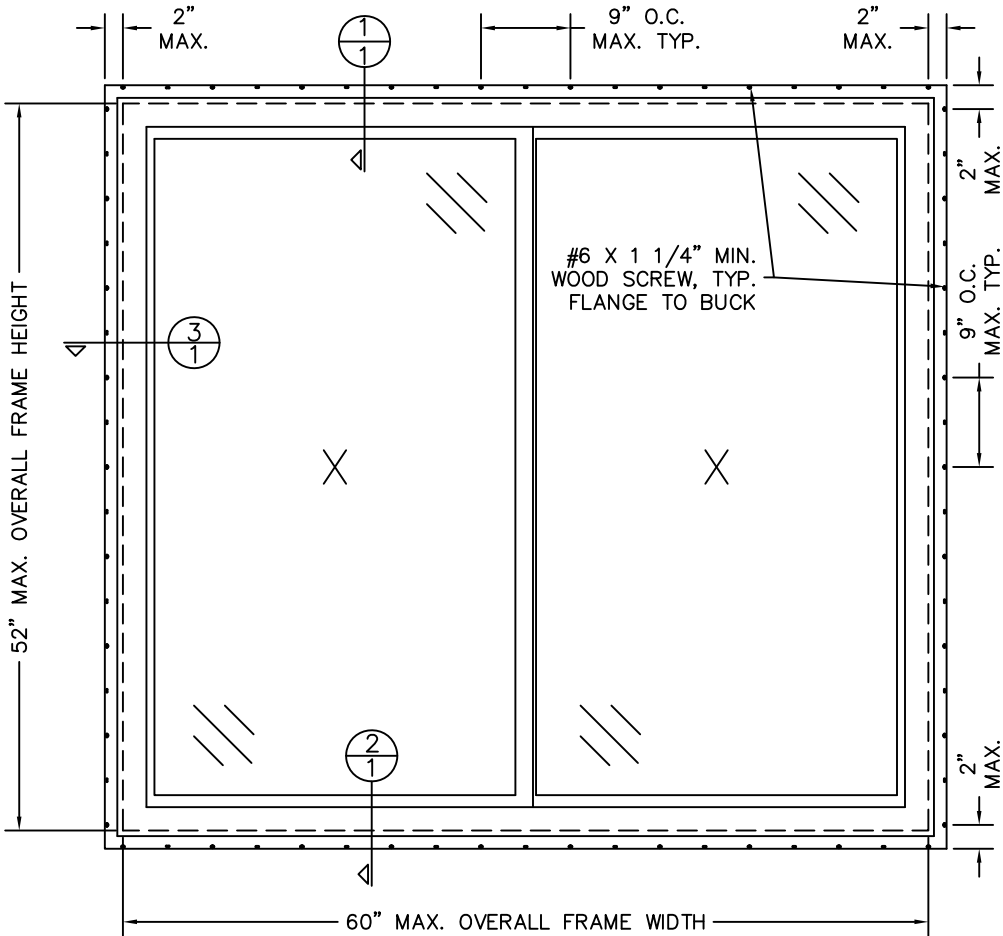


TABLE 1: FIN INSTALLATION FASTENERS TABLE

ID	SUBSTRATE TYPE	ANCHOR TYPE	MIN. EMBED.	MIN. EDGE DISTANCE
ANCHOR THROUGH FIN:				
A	2X MIN. SOUTHERN PINE WOOD (G=0.55)	#6 WOOD SCREW	1"	3/8"

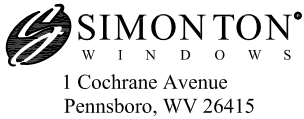
DISCLOSURE STATEMENT
This document is the property of Simonton Windows, which retains all proprietary and other rights to its subject matter. This document is provided to the recipient on the expressed condition that it is not to be disclosed, reproduced in whole or part, nor used in conjunction with the design, manufacture or repair of goods for anyone other than Simonton Windows without its consent. This restriction does not limit the recipient's rights to utilize information contained in this document which is properly obtained from another source.

FILE: FL 10160

MATERIAL:	
RMS FINISH:	EXCEPT AS NOTED
ALLOY & TEMPER:	
WEIGHT:	VOLUME:
SURFACE AREA:	PERIMETER:
FINISH TREATMENT:	

Dimensional Tolerances
Unless Otherwise Specified

Decimals	Angles
.X ± .03	
.XX ± .01	0° 30 min.
.XXX ± .005	



SIZE: B	DRAWING NO.: IN0545	REV.: 4
DRAWN BY: T.D.D.	DATE: 04/19/12	
CHECKED BY:	DATE:	
APPRV'D BY:	DATE:	
SCALE: FIT	SHEET: 1 of 2	
SERIES: 42-19 IMPACT RESISTANT HORIZONTAL SLIDER		
TITLE: THROUGH-FIN 2X BUCK INSTALLATION		

