



DEPARTMENT OF REGULATORY AND ECONOMIC RESOURCES (RER)  
BOARD AND CODE ADMINISTRATION DIVISION

**NOTICE OF ACCEPTANCE (NOA)**

MIAMI-DADE COUNTY  
PRODUCT CONTROL SECTION  
11805 SW 26 Street, Room 208  
T (786) 315-2590 F (786) 315-2599  
[www.miamidade.gov/economy](http://www.miamidade.gov/economy)

SIW Impact Windows, LLC  
975 S. Congress Avenue, # 102  
Delray Beach, FL 33445

**SCOPE:**

This NOA is being issued under the applicable rules and regulations governing the use of construction materials. The documentation submitted has been reviewed and accepted by Miami-Dade County RER - Product Control Section to be used in Miami Dade County and other areas where allowed by the Authority Having Jurisdiction (AHJ).

This NOA shall not be valid after the expiration date stated below. The Miami-Dade County Product Control Section (In Miami Dade County) and/or the AHJ (in areas other than Miami Dade County) reserve the right to have this product or material tested for quality assurance purposes. If this product or material fails to perform in the accepted manner, the manufacturer will incur the expense of such testing and the AHJ may immediately revoke, modify, or suspend the use of such product or material within their jurisdiction. RER reserves the right to revoke this acceptance, if it is determined by Miami-Dade County Product Control Section that this product or material fails to meet the requirements of the applicable building code.

This product is approved as described herein, and has been designed to comply with the Florida Building Code, including the High Velocity Hurricane Zone.

**DESCRIPTION:** Series "300 StormSafe" Aluminum Fixed Window - L.M.I.

**APPROVAL DOCUMENT:** Drawing No. W07-49, titled "S-300 StormSafe Alum. Fixed Wdw. (L.M.I.)", sheets 1 through 7 of 7, dated 05/18/07, with revision F dated 11/20/14, prepared by Al-Farooq Corporation, signed and sealed by Javad Ahmad, P.E., bearing the Miami-Dade County Product Control Revision stamp with the Notice of Acceptance number and expiration date by the Miami-Dade County Product Control Section.

**MISSILE IMPACT RATING:** Large and Small Missile Impact Resistant

**LABELING:** Each unit shall bear a permanent label with the manufacturer's name or logo, city, state, model/series, and following statement: "Miami-Dade County Product Control Approved", unless otherwise noted herein.

**RENEWAL** of this NOA shall be considered after a renewal application has been filed and there has been no change in the applicable building code negatively affecting the performance of this product.

**TERMINATION** of this NOA will occur after the expiration date or if there has been a revision or change in the materials, use, and/or manufacture of the product or process. Misuse of this NOA as an endorsement of any product, for sales, advertising or any other purposes shall automatically terminate this NOA. Failure to comply with any section of this NOA shall be cause for termination and removal of NOA.

**ADVERTISEMENT:** The NOA number preceded by the words Miami-Dade County, Florida, and followed by the expiration date may be displayed in advertising literature. If any portion of the NOA is displayed, then it shall be done in its entirety.

**INSPECTION:** A copy of this entire NOA shall be provided to the user by the manufacturer or its distributors and shall be available for inspection at the job site at the request of the Building Official.

This NOA revises NOA# 12-0221.08 and consists of this page 1 and evidence pages E-1, E-2 and E-3, as well as approval document mentioned above.

The submitted documentation was reviewed by Manuel Perez, P.E.



*MP*  
3/17/15

NOA No. 14-1212.01  
Expiration Date: August 29, 2017  
Approval Date: March 26, 2015  
Page 1

NOTICE OF ACCEPTANCE: EVIDENCE SUBMITTED

**A. DRAWINGS**

1. Manufacturer's die drawings and sections.
2. Drawing No. **W07-49**, titled "S-300 StormSafe Alum Fixed Wdw. (L.M.I.)", sheets 1 through 7 of 7, dated 05/18/07, with revision F dated 11/20/14, prepared by Al-Farooq Corporation, signed and sealed by Javad Ahmad, P.E.

**B. TESTS**

1. Test reports on: 1) Air Infiltration Test, per FBC, TAS 202-94  
2) Uniform Static Air Pressure Test, Loading per FBC TAS 202-94  
3) Water Resistance Test, per FBC, TAS 202-94  
along with marked-up drawings and installation diagram of an aluminum fixed window, prepared by Blackwater Testing, Inc., Test Report No. **BT-SIW-14-017A**, dated 09/26/14, signed and sealed by Yamil Gerardo Kuri, P.E.
2. Test reports on: 1) Large Missile Impact Test per FBC, TAS 201-94  
2) Cyclic Wind Pressure Loading per FBC, TAS 203-94  
3) Drop Load Test, per CPCS 16 CFR 1201 (Cat 11) and ANSI Z97.1  
along with marked-up drawings and installation diagram of an aluminum fixed window, prepared by Blackwater Testing, Inc., Test Report No. **BT-SIW-14-017B**, dated 09/26/14, signed and sealed by Yamil Gerardo Kuri, P.E.
3. Test reports on: 1) Air Infiltration Test, per FBC, TAS 202-94  
2) Uniform Static Air Pressure Test, Loading per FBC TAS 202-94  
3) Water Resistance Test, per FBC, TAS 202-94  
4) Large Missile Impact Test per FBC, TAS 201-94  
5) Cyclic Wind Pressure Loading per FBC, TAS 203-94  
along with marked-up drawings and installation diagram of a series 300 aluminum fixed window, prepared by American Test Lab of South Florida, Inc., Test Report No. **ATLSF-0525.01-10**, dated 06/09/10, and addendum letter dated 06/09/10, all signed and sealed by Julio E. Gonzalez, P.E.  
*(Submitted under NOA No. 10-0715.03)*
4. Test reports on: 1) Air Infiltration Test, per FBC, TAS 202-94  
2) Uniform Static Air Pressure Test, Loading per FBC TAS 202-94  
3) Water Resistance Test, per FBC, TAS 202-94  
along with marked-up drawings and installation diagram of a series 300 aluminum fixed window, prepared by Hurricane Engineering Testing Laboratory, Inc., Test Report No. **HETI-07-4110**, dated 01/15/07, signed and sealed by Rafael E. Droz-Seda, P.E.  
*(Submitted under NOA No. 07-0604.05)*

  
Manuel Perez, P.E.  
Product Control Examiner  
NOA No. 14-1212.01

Expiration Date: August 29, 2017  
Approval Date: March 26, 2015

NOTICE OF ACCEPTANCE: EVIDENCE SUBMITTED

**B. TESTS (CONTINUED)**

5. Test reports on: 1) Large Missile Impact Test per FBC, TAS 201-94  
2) Cyclic Wind Pressure Loading per FBC, TAS 203-94  
along with marked-up drawings and installation diagram of a series 300 aluminum fixed window, prepared by Hurricane Engineering Testing Laboratory, Inc., Test Report No. **HETI-07-4111**, dated 01/25/07, signed and sealed by Rafael E. Droz-Seda, P.E.  
*(Submitted under NOA No. 07-0604.05)*
6. Test reports on: 1) Large Missile Impact Test per FBC, TAS 201-94  
2) Cyclic Wind Pressure Loading per FBC, TAS 203-94  
along with marked-up drawings and installation diagram of a series 300 aluminum fixed window, prepared by Hurricane Engineering Testing Laboratory, Inc., Test Report No. **HETI-07-4112**, dated 04/09/07, signed and sealed by Rafael E. Droz-Seda, P.E.  
*(Submitted under NOA No. 07-0604.05)*
7. Test reports on: 1) Large Missile Impact Test per FBC, TAS 201-94  
2) Cyclic Wind Pressure Loading per FBC, TAS 203-94  
along with marked-up drawings and installation diagram of a series 300 aluminum fixed window, prepared by Hurricane Engineering Testing Laboratory, Inc., Test Report No. **HETI-07-4113**, dated 04/09/07, signed and sealed by Rafael E. Droz-Seda, P.E.  
*(Submitted under NOA No. 07-0604.05)*
8. Test reports on: 1) Air Infiltration Test, per FBC, TAS 202-94  
2) Uniform Static Air Pressure Test, Loading per FBC TAS 202-94  
3) Water Resistance Test, per FBC, TAS 202-94  
along with marked-up drawings and installation diagram of a series 300 aluminum fixed window, prepared by Hurricane Engineering Testing Laboratory, Inc., Test Report No. **HETI-07-4114**, dated 04/09/07, signed and sealed by Rafael E. Droz-Seda, P.E.  
*(Submitted under NOA No. 07-0604.05)*
9. Test reports on: 1) Large Missile Impact Test per FBC, TAS 201-94  
2) Cyclic Wind Pressure Loading per FBC, TAS 203-94  
along with marked-up drawings and installation diagram of a series 300 aluminum fixed window, prepared by Hurricane Engineering Testing Laboratory, Inc., Test Report No. **HETI-07-4115**, dated 04/09/07, signed and sealed by Rafael E. Droz-Seda, P.E.  
*(Submitted under NOA No. 07-0604.05)*

  
Manuel Perez, P.E.  
Product Control Examiner

NOA No. 14-1212.01  
Expiration Date: August 29, 2017  
Approval Date: March 26, 2015

NOTICE OF ACCEPTANCE: EVIDENCE SUBMITTED

**C. CALCULATIONS**

1. Anchor verification calculations and structural analysis, complying with **FBC-5<sup>th</sup> Edition (2014)**, dated 11/18/14, prepared by Al-Farooq Corporation, signed and sealed by Javad Ahmad, P.E.
2. Glazing complies with **ASTM E1300-09**

**D. QUALITY ASSURANCE**

1. Miami-Dade Department of Regulatory and Economic Resources (RER).

**E. MATERIAL CERTIFICATIONS**


1. Notice of Acceptance No. **11-0624.02** issued to **E.I. DuPont DeNemours & Co., Inc.** for their "**DuPont SentryGlas® Interlayer**" dated 08/25/11, expiring on 01/14/17.
2. Notice of Acceptance No. **13-0129.27** issued to **E.I. DuPont DeNemours & Co., Inc.** for their "**DuPont Butacite® PVB Interlayer**" dated 04/11/13, expiring on 12/11/16.
3. Notice of Acceptance No. **14-0423.17** issued to **Eastman Chemical Company (MA)** for their "**Saflex Clear and Color Glass Interlayers**" dated 06/19/14, expiring on 05/21/16.

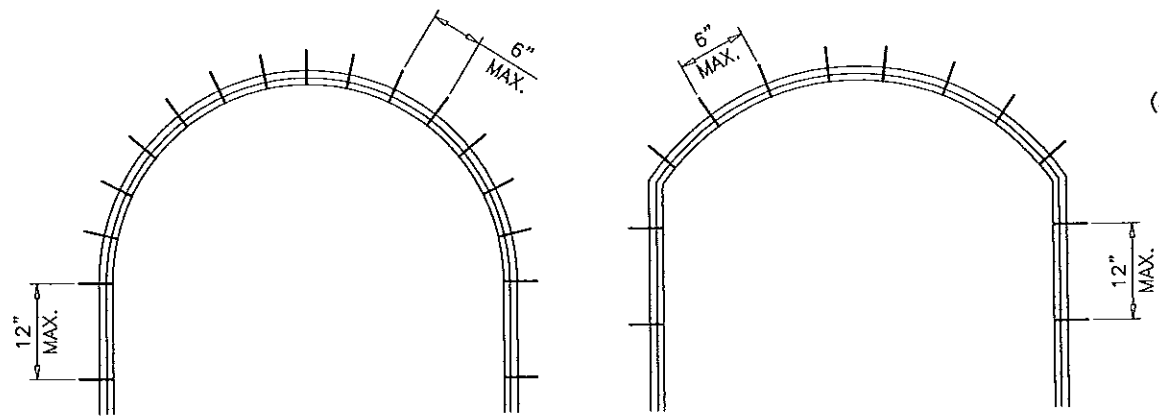
**F. STATEMENTS**

1. Statement letter of conformance, complying with **FBC-5<sup>th</sup> Edition (2014)**, and of no financial interest, dated November 18, 2014, issued by Al-Farooq Corporation, signed and sealed by Javad Ahmad, P.E.
2. Laboratory compliance letter for Test Reports No. **HETI-07-4110, HETI-07-4111, HETI-07-4112, HETI-07-4113, HETI-07-4114** and, **HETI-07-4115** issued by Hurricane Engineering Testing Laboratory, Inc., dated 01/15/25 and 04/09/07, all signed and sealed by Rafael E. Droz-Seda, P.E.  
*(Submitted under NOA No. 07-0604.05)*
3. Proposal approved by the Product Control Section, dated 09/19/14, signed by Jaime Gascon, P.E., Supervisor, Product Control Section.

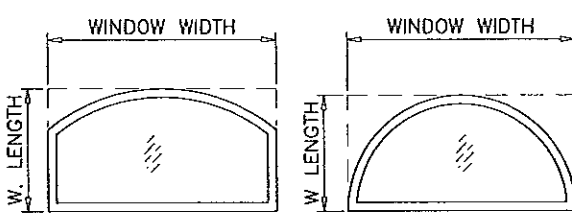
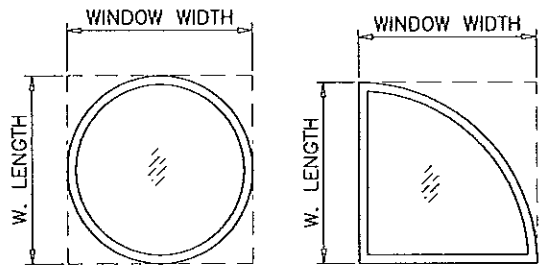
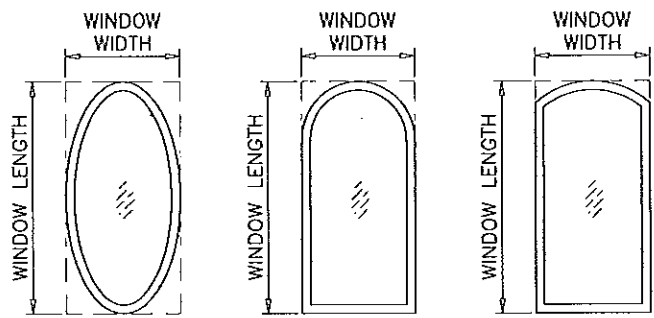
**G. OTHERS**

1. Notice of Acceptance No. **12-0221.08**, issued to SIW Impact Windows, LLC for their Series "300 StormSafe" Aluminum Fixed Window – L.M.I., approved on 04/26/12 and expiring on 08/29/17.

  
Manuel Perez, P.E.  
Product Control Examiner  
NOA No. 14-1212.01  
Expiration Date: August 29, 2017  
Approval Date: March 26, 2015



6" MAX. ANCHOR SPACING AT CURVED FRAMES  
 12" MAX. ANCHOR SPACING AT STRAIGHT FRAMES



ALLOWABLE LOADS FOR ALTERNATE SHAPES AS SHOWN ABOVE OR SIMILAR CAN BE VERIFIED BY INSCRIBING PICTURE WINDOW SHAPE WITHIN SQUARE OR RECTANGLE AS SHOWN IN DOTTED LINES AND OBTAINING ALLOWABLE LOADS FROM THOSE SHAPES.

**SERIES 300 STORMSAFE  
 ALUMINUM FIXED WINDOW**

APPROVAL APPLIES TO SINGLE UNITS OR SIDE BY SIDE COMBINATIONS OF FIXED/FIXED OR FIXED WITH OTHER MIAMI-DADE COUNTY APPR'D WINDOWS USING MIAMI-DADE COUNTY APPROVED MULLIONS IN BETWEEN. LOWER DESIGN PRESSURE FROM WINDOWS OR MULLION APPROVAL WILL APPLY TO ENTIRE SYSTEM.

DESIGN LOAD RATING FOR THESE WINDOWS TO BE AS PER CHARTS SHOWN ON SHEETS 3 AND 4.

THIS PRODUCT HAS BEEN DESIGNED AND TESTED TO COMPLY WITH THE REQUIREMENTS OF THE FLORIDA BUILDING CODE INCLUDING HIGH VELOCITY HURRICANE ZONE (HVHZ).

WOOD BUCKS BY OTHERS, MUST BE ANCHORED PROPERLY TO TRANSFER LOADS TO THE STRUCTURE.

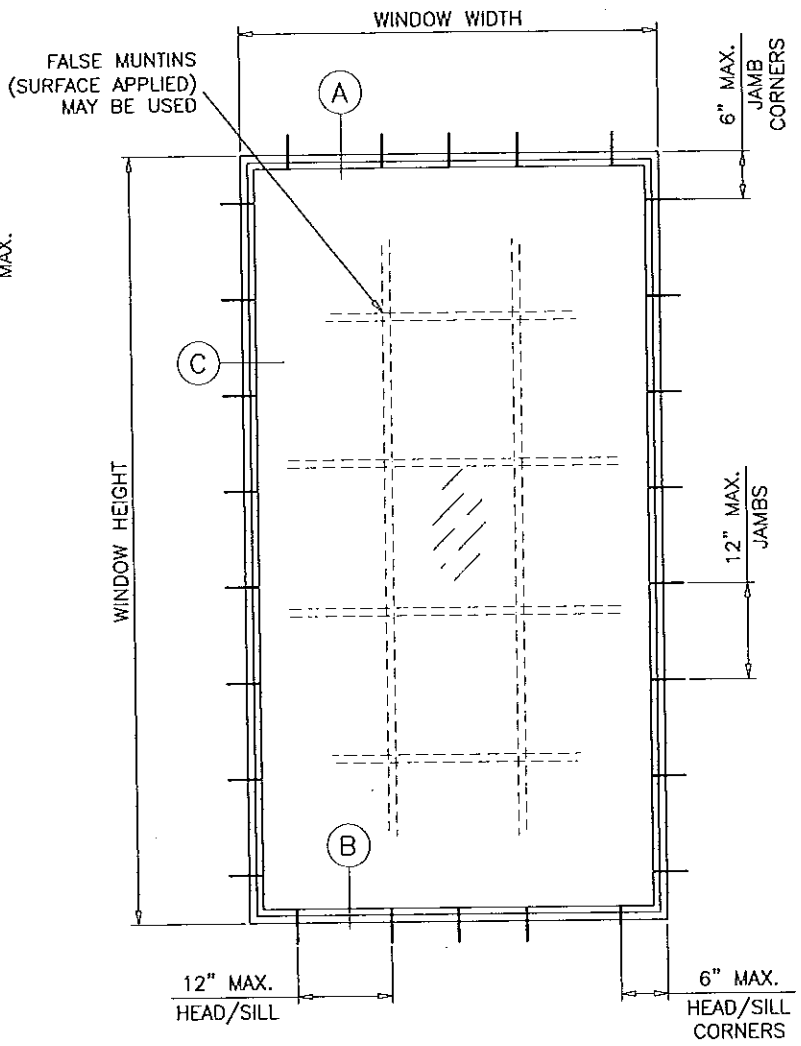
ANCHORS SHALL BE AS LISTED, SPACED AS SHOWN ON DETAILS, ANCHORS EMBEDMENT TO BASE MATERIAL SHALL BE BEYOND WALL DRESSING OR STUCCO.

ANCHORING OR LOADING CONDITIONS NOT SHOWN IN THESE DETAILS ARE NOT PART OF THIS APPROVAL.

A LOAD DURATION INCREASE IS USED IN DESIGN OF ANCHORS INTO WOOD ONLY.

ALL SHIMS TO BE HIGH IMPACT, NON-METALLIC AND NON-COMPRESSIBLE.

MATERIALS INCLUDING BUT NOT LIMITED TO STEEL/METAL SCREWS, THAT COME INTO CONTACT WITH OTHER DISSIMILAR MATERIALS SHALL MEET THE REQUIREMENTS OF THE FLORIDA BUILDING CODE.



TYPICAL ELEVATION

WINDOWS WITH GLASS TYPE 'C1' COMPLY WITH REQUIREMENTS OF ANSI Z97.1.

THESE WINDOWS ARE RATED FOR LARGE & SMALL MISSILE IMPACT. SHUTTERS ARE NOT REQUIRED.

Engr: JAVAD AHMAD  
 CIVIL  
 FLA. PE # 70592  
 C.A.N. 3538

NOV 25 2014

PRODUCT REVISED as complying with the Florida Building Code  
 Acceptance No 14-1212-01  
 Expiration Date Aug 29, 2017  
 By Manuel Perez  
 Miami Dade Product Control

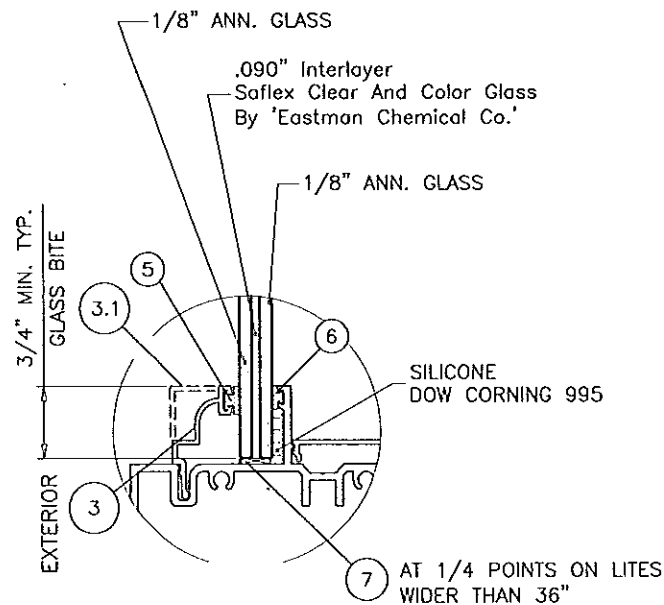
**af c**  
**AL-FAROOQ CORPORATION**  
 ENGINEERS & PRODUCT DEVELOPMENT  
 12335 S.W. 87 AVE  
 MIAMI, FLORIDA 33174  
 TEL. (305) 264-8100 FAX. (305) 262-6978  
 COMP-ANL\W07-49SIW

S-300 STORMSAFE ALUM FIXED WDW. (L.M.I.)  
**SIW IMPACT WINDOWS, LLC.**  
 975 S. CONGRESS AVE. #102  
 DELRAY BEACH, FL. 33445  
 TEL. (561) 274-9392 FAX. (561) 274-9262

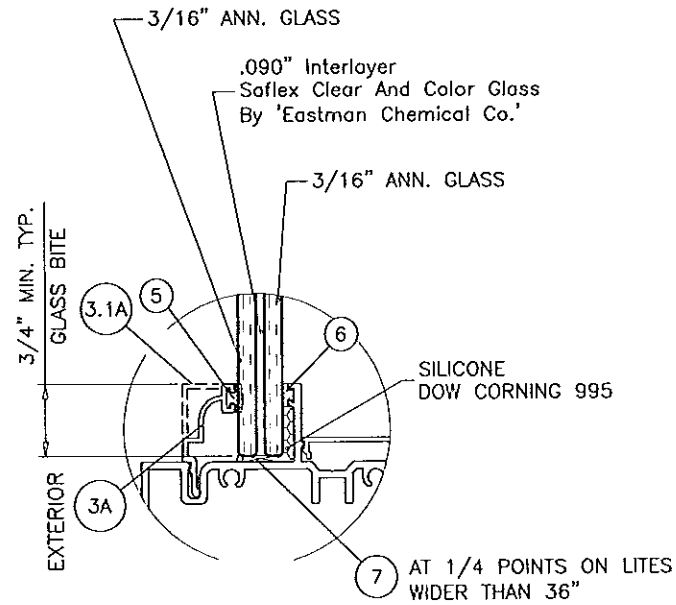
no	date	by	description
C	06.14.10		NO CHANGE THIS SHEET
D	10.19.10		REV. PER BCCO COMMENTS
E	01.20.12		UPDATED TO 2010 FBC
F	11.20.14		GENERAL REVISION

date: 05-18-07  
 scale: 1/2"=1'-0"  
 dr. by: HAMID  
 chk. by:

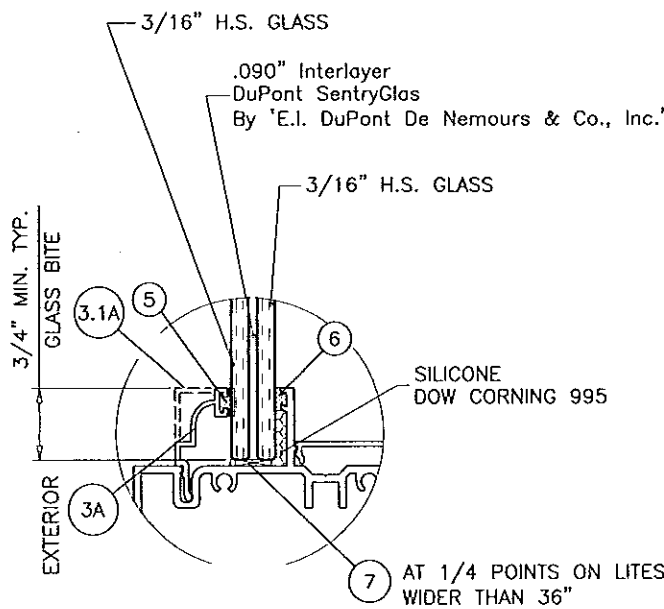
drawing no.  
**W07-49**  
 sheet 1 of 7



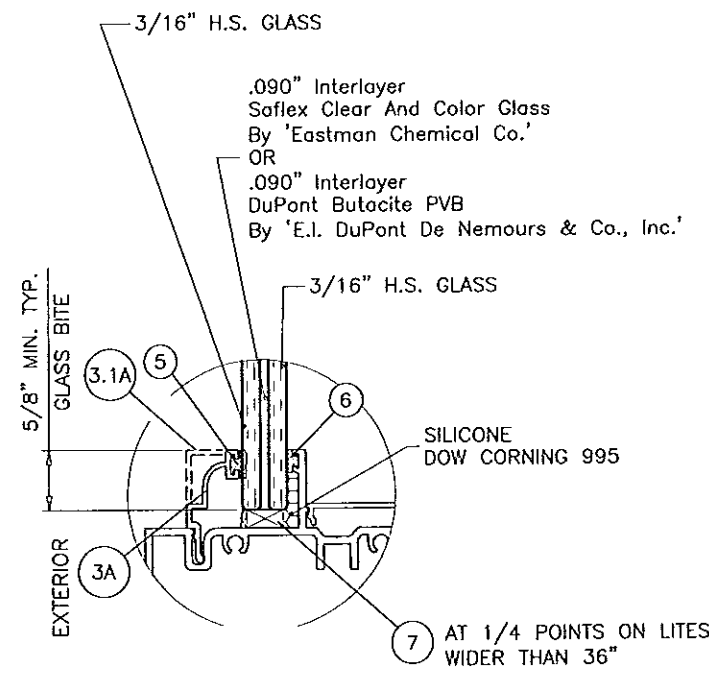
**GLASS TYPE 'A'**  
23/64" OVERALL



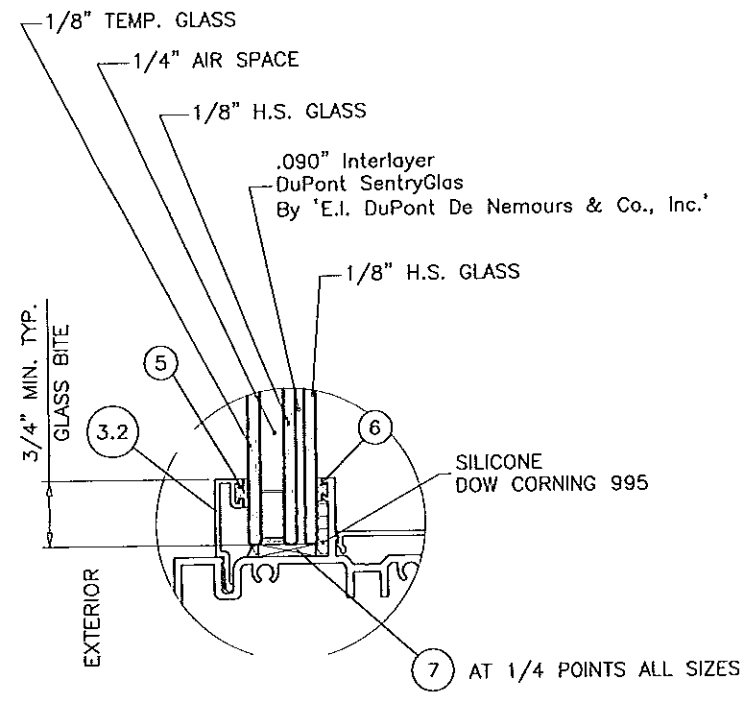
**GLASS TYPE 'B'**  
29/64" OVERALL



**GLASS TYPE 'C'**  
7/16" OVERALL



**GLASS TYPE 'C1'**  
7/16" OVERALL



**GLASS TYPE 'D'**  
11/16" OVERALL

FOR LOADS LESS THAN OR EQUAL TO 70 PSF  
MIN. GLASS BITE CAN BE 5/8".  
GLASS TYPES A, B & D.

Engr: JAVAD AHMAD  
CIVIL  
FLA. PE # 70592  
C.A.N. 3538  
  
NOV 25 2014

PRODUCT REVISED  
as complying with the Florida  
Building Code  
Acceptance No. 14-1212.01  
Expiration Date Aug. 29, 2017  
By *Manuel Pina*  
Miami Dade Product Control

**af c**  
**AL-FAROOQ CORPORATION**  
ENGINEERS & PRODUCT DEVELOPMENT  
1235 S.W. 87 AVE  
MIAMI, FLORIDA 33174  
TEL (305) 264-8100 FAX (305) 262-6978  
COMP-ANL\W07-49SIW

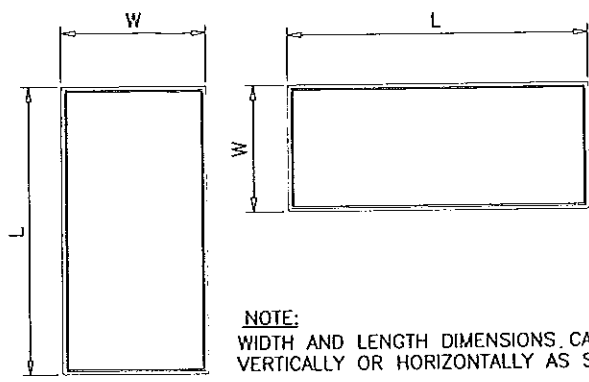
S-300 STORMSAFE ALUM FIXED WDW. (L.M.I.)  
**SIW IMPACT WINDOWS, LLC.**  
975 S. CONGRESS AVE. #102  
DELRAY BEACH, FL. 33445  
TEL. (561) 274-9392 FAX. (561) 274-9262

no	date	description
C	06.14.10	INSUL. LAM. GLASS ADD.
D	10.19.10	REV. PER BCCO COMMENTS
E	01.20.12	UPDATED TO 2010 FBC
F	11.20.14	GENERAL REVISION

date: 05-18-07  
scale: 1/2" = 1"  
dr. by: HAMID  
chk. by:

drawing no.  
**W07-49**  
sheet 2 of 7

DESIGN LOAD CAPACITY - PSF											
WINDOW DIMS.		GLASS TYPE 'A'		GLASS TYPE 'B'		GLASS TYPE 'C'		GLASS TYPE 'C1'		GLASS TYPE 'D'	
WIDTH	LENGTH	EXT.(+)	INT.(-)	EXT.(+)	INT.(-)	EXT.(+)	INT.(-)	EXT.(+)	INT.(-)	EXT.(+)	INT.(-)
26-1/2"	26"	60.0	60.0	70.0	70.0	90.0	130.0	60.0	60.0	60.0	60.0
32"		60.0	60.0	70.0	70.0	90.0	130.0	60.0	60.0	60.0	60.0
37"		60.0	60.0	70.0	70.0	90.0	130.0	60.0	60.0	60.0	60.0
42"		60.0	60.0	70.0	70.0	90.0	130.0	60.0	60.0	60.0	60.0
48"		60.0	60.0	70.0	70.0	90.0	130.0	60.0	60.0	60.0	60.0
53-1/8"		60.0	60.0	70.0	70.0	90.0	130.0	60.0	60.0	60.0	60.0
26-1/2"	38-3/8"	60.0	60.0	70.0	70.0	90.0	130.0	60.0	60.0	60.0	60.0
32"		60.0	60.0	70.0	70.0	90.0	130.0	60.0	60.0	60.0	60.0
37"		60.0	60.0	70.0	70.0	90.0	130.0	60.0	60.0	60.0	60.0
42"		57.9	57.9	70.0	70.0	90.0	130.0	60.0	60.0	60.0	60.0
48"		57.9	57.9	70.0	70.0	90.0	130.0	60.0	60.0	60.0	60.0
53-1/8"		57.9	57.9	70.0	70.0	90.0	130.0	60.0	60.0	60.0	60.0
26-1/2"	50-5/8"	60.0	60.0	70.0	70.0	90.0	130.0	60.0	60.0	60.0	60.0
32"		60.0	60.0	70.0	70.0	90.0	130.0	60.0	60.0	60.0	60.0
37"		60.0	60.0	70.0	70.0	90.0	130.0	60.0	60.0	60.0	60.0
42"		52.9	52.9	70.0	70.0	90.0	130.0	60.0	60.0	60.0	60.0
48"		-	-	70.0	70.0	90.0	130.0	60.0	60.0	60.0	60.0
53-1/8"		-	-	70.0	70.0	90.0	130.0	60.0	60.0	59.4	59.4
26-1/2"	63"	60.0	60.0	70.0	70.0	90.0	130.0	60.0	60.0	60.0	60.0
32"		60.0	60.0	70.0	70.0	90.0	130.0	60.0	60.0	60.0	60.0
37"		60.0	60.0	70.0	70.0	90.0	130.0	60.0	60.0	60.0	60.0
42"		-	-	70.0	70.0	90.0	130.0	60.0	60.0	60.0	60.0
48"		-	-	70.0	70.0	90.0	130.0	60.0	60.0	60.0	60.0
53-1/8"		-	-	-	-	90.0	130.0	60.0	60.0	-	-
26-1/2"	74-1/4"	60.0	60.0	70.0	70.0	90.0	130.0	60.0	60.0	60.0	60.0
32"		-	-	70.0	70.0	90.0	130.0	60.0	60.0	60.0	60.0
37"		-	-	70.0	70.0	90.0	130.0	60.0	60.0	60.0	60.0
42"		-	-	70.0	70.0	90.0	130.0	60.0	60.0	-	-
48"		-	-	-	-	90.0	130.0	60.0	60.0	-	-
53-1/8"		-	-	-	-	90.0	130.0	60.0	60.0	-	-
26-1/2"	78"	60.0	60.0	70.0	70.0	90.0	130.0	60.0	60.0	60.0	60.0
32"		-	-	70.0	70.0	90.0	130.0	60.0	60.0	60.0	60.0
37"		-	-	70.0	70.0	90.0	130.0	60.0	60.0	60.0	60.0
42"		-	-	-	-	90.0	130.0	60.0	60.0	-	-
48"		-	-	-	-	90.0	130.0	60.0	60.0	-	-
53-1/8"		-	-	-	-	90.0	130.0	60.0	60.0	-	-
26-1/2"	84"	60.0	60.0	70.0	70.0	90.0	130.0	60.0	60.0	60.0	60.0
32"		-	-	70.0	70.0	90.0	130.0	60.0	60.0	60.0	60.0
37"		-	-	70.0	70.0	90.0	130.0	60.0	60.0	60.0	60.0
42"		-	-	-	-	90.0	130.0	60.0	60.0	-	-
48"		-	-	-	-	90.0	130.0	60.0	60.0	-	-
53-1/8"		-	-	-	-	90.0	129.4	60.0	60.0	-	-
26-1/2"	96"	-	-	70.0	70.0	90.0	130.0	60.0	60.0	60.0	60.0
32"		-	-	70.0	70.0	90.0	130.0	60.0	60.0	60.0	60.0
37"		-	-	-	-	90.0	130.0	60.0	60.0	-	-
42"		-	-	-	-	90.0	128.6	60.0	60.0	-	-
48"		-	-	-	-	90.0	119.5	60.0	60.0	-	-
53-1/8"		-	-	-	-	90.0	111.8	60.0	60.0	-	-
26-1/2"	108"	-	-	-	-	90.0	130.0	60.0	60.0	-	-
32"		-	-	-	-	90.0	130.0	60.0	60.0	-	-
37"		-	-	-	-	90.0	130.0	60.0	60.0	-	-
42"		-	-	-	-	90.0	122.5	60.0	60.0	-	-
26-1/2"	120"	-	-	-	-	90.0	130.0	60.0	60.0	-	-
32"		-	-	-	-	90.0	130.0	60.0	60.0	-	-
37"		-	-	-	-	90.0	130.0	60.0	60.0	-	-
42"		-	-	-	-	90.0	112.4	60.0	60.0	-	-
26-1/2"	126"	-	-	-	-	90.0	130.0	60.0	60.0	-	-
32"		-	-	-	-	90.0	130.0	60.0	60.0	-	-
37"		-	-	-	-	90.0	130.0	60.0	60.0	-	-



NOTE:  
WIDTH AND LENGTH DIMENSIONS CAN BE ORIENTED VERTICALLY OR HORIZONTALLY AS SHOWN ABOVE.

NOTE:  
GLASS CAPACITIES ON THIS SHEET ARE BASED ON ASTM E1300-09 (3 SEC. GUSTS).

Engr: JAVAD AHMAD  
CIVIL  
FLA. PE # 70592  
C.A.N. 3538

NOV 25 2014

PRODUCT REVISED  
as complying with the Florida  
Building Code  
Acceptance No 14-1212-01  
Expiration Date Aug 29, 2017

By *Manuel Perez*  
Miami Dade Product Control

**af c**  
**AL-FAROOQ CORPORATION**  
ENGINEERS & PRODUCT DEVELOPMENT  
1235 S.W. 87 AVE  
MIAMI, FLORIDA 33174  
TEL (305) 262-6978  
FAX (305) 262-6978  
COMP-ANL\W07-49SIW

S-300 STORMSAFE ALUM FIXED WDW. (L.M.I.)  
**SIW IMPACT WINDOWS, LLC.**  
975 S. CONGRESS AVE. #102  
DELRAY BEACH, FL 33445  
TEL. (561) 274-9392 FAX. (561) 274-9262

no	date	description
C	06.14.10	INSUL. LAM. GLASS ADD.
D	10.19.10	REV. PER BCCO COMMENTS
E	01.20.12	UPDATED TO 2010 FBC
F	11.20.14	GENERAL REVISION

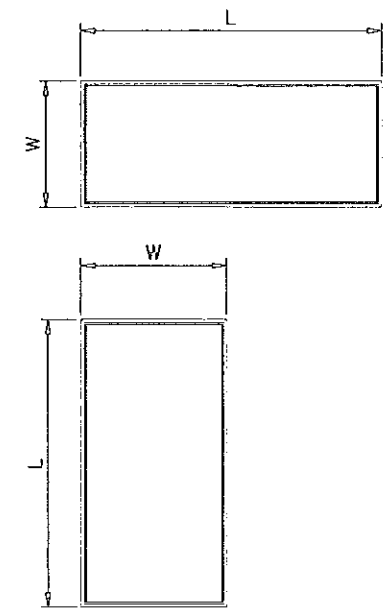
revisions:

date: 05-18-07  
scale: 1/2" = 1"  
dr. by: HAMID  
chk. by:

drawing no.  
**W07-49**  
sheet 3 of 7

DESIGN LOAD CAPACITY - PSF												
WINDOW DIMS.		GLASS TYPE 'A'		GLASS TYPE 'B'		GLASS TYPE 'C'		GLASS TYPE 'C1'		GLASS TYPE 'D'		
WIDTH	LENGTH	EXT.(+)	INT.(-)	EXT.(+)	INT.(-)	EXT.(+)	INT.(-)	EXT.(+)	INT.(-)	EXT.(+)	INT.(-)	
24"	36"	60.0	60.0	70.0	70.0	90.0	130.0	60.0	60.0	60.0	60.0	
30"		60.0	60.0	70.0	70.0	90.0	130.0	60.0	60.0	60.0	60.0	
36"		60.0	60.0	70.0	70.0	90.0	130.0	60.0	60.0	60.0	60.0	
42"		60.0	60.0	70.0	70.0	90.0	130.0	60.0	60.0	60.0	60.0	
48"		60.0	60.0	70.0	70.0	90.0	130.0	60.0	60.0	60.0	60.0	
54"		60.0	60.0	70.0	70.0	90.0	130.0	60.0	60.0	60.0	60.0	
60"		60.0	60.0	70.0	70.0	90.0	130.0	60.0	60.0	60.0	60.0	
66"		-	-	-	-	70.0	70.0	60.0	60.0	60.0	60.0	60.0
72"		-	-	-	-	70.0	70.0	60.0	60.0	60.0	60.0	60.0
78"		-	-	-	-	70.0	70.0	60.0	60.0	60.0	60.0	60.0
84"		-	-	-	-	70.0	70.0	60.0	60.0	60.0	60.0	60.0
88"		-	-	-	-	70.0	70.0	60.0	60.0	-	-	-
24"	48"	60.0	60.0	70.0	70.0	90.0	130.0	60.0	60.0	60.0	60.0	
30"		60.0	60.0	70.0	70.0	90.0	130.0	60.0	60.0	60.0	60.0	
36"		60.0	60.0	70.0	70.0	90.0	130.0	60.0	60.0	60.0	60.0	
42"		52.9	52.9	70.0	70.0	90.0	130.0	60.0	60.0	60.0	60.0	
48"		46.3	46.3	70.0	70.0	90.0	130.0	60.0	60.0	60.0	60.0	
54"		-	-	70.0	70.0	90.0	130.0	60.0	60.0	60.0	60.0	
60"		-	-	70.0	70.0	90.0	130.0	60.0	60.0	60.0	60.0	
66"		-	-	-	-	70.0	70.0	60.0	60.0	-	-	-
72"		-	-	-	-	70.0	70.0	60.0	60.0	-	-	-
78"		-	-	-	-	70.0	70.0	60.0	60.0	-	-	-
84"		-	-	-	-	70.0	70.0	60.0	60.0	-	-	-
88"		-	-	-	-	70.0	70.0	60.0	60.0	-	-	-
24"	60"	60.0	60.0	70.0	70.0	90.0	130.0	60.0	60.0	60.0	60.0	
30"		60.0	60.0	70.0	70.0	90.0	130.0	60.0	60.0	60.0	60.0	
36"		60.0	60.0	70.0	70.0	90.0	130.0	60.0	60.0	60.0	60.0	
42"		-	-	70.0	70.0	90.0	130.0	60.0	60.0	60.0	60.0	
48"		-	-	70.0	70.0	90.0	130.0	60.0	60.0	60.0	60.0	
54"		-	-	-	-	88.5	127.9	59.0	59.0	-	-	-
60"		-	-	-	-	79.7	115.1	53.1	53.1	-	-	-
66"		-	-	-	-	70.0	70.0	53.1	53.1	-	-	-
72"		-	-	-	-	70.0	70.0	53.1	53.1	-	-	-
78"		-	-	-	-	70.0	70.0	53.1	53.1	-	-	-
84"		-	-	-	-	70.0	70.0	53.1	53.1	-	-	-
88"		-	-	-	-	70.0	70.0	-	-	-	-	-
24"	72"	60.0	60.0	70.0	70.0	90.0	130.0	60.0	60.0	60.0	60.0	
30"		60.0	60.0	70.0	70.0	90.0	130.0	60.0	60.0	60.0	60.0	
36"		-	-	70.0	70.0	90.0	130.0	60.0	60.0	60.0	60.0	
42"		-	-	70.0	70.0	90.0	130.0	60.0	60.0	60.0	60.0	
48"		-	-	-	-	90.0	130.0	60.0	60.0	-	-	-
54"		-	-	-	-	88.5	127.9	59.0	59.0	-	-	-
60"		-	-	-	-	79.7	115.1	53.1	53.1	-	-	-
66"		-	-	-	-	70.0	70.0	48.3	48.3	-	-	-
72"		-	-	-	-	70.0	70.0	-	-	-	-	-
78"		-	-	-	-	70.0	70.0	-	-	-	-	-
84"		-	-	-	-	70.0	70.0	-	-	-	-	-
88"		-	-	-	-	70.0	70.0	-	-	-	-	-
24"	84"	60.0	60.0	70.0	70.0	90.0	130.0	60.0	60.0	60.0	60.0	
30"		-	-	70.0	70.0	90.0	130.0	60.0	60.0	60.0	60.0	
36"		-	-	70.0	70.0	90.0	130.0	60.0	60.0	60.0	60.0	
42"		-	-	-	-	90.0	130.0	60.0	60.0	-	-	-
48"		-	-	-	-	90.0	130.0	60.0	60.0	-	-	-
54"		-	-	-	-	88.5	127.9	59.0	59.0	-	-	-
60"		-	-	-	-	79.7	115.1	53.1	53.1	-	-	-
66"		-	-	-	-	70.0	70.0	-	-	-	-	-
72"		-	-	-	-	70.0	70.0	-	-	-	-	-
78"		-	-	-	-	69.6	69.6	-	-	-	-	-
84"		-	-	-	-	64.6	64.6	-	-	-	-	-
88"		-	-	-	-	64.6	64.6	-	-	-	-	-

DESIGN LOAD CAPACITY - PSF												
WINDOW DIMS.		GLASS TYPE 'A'		GLASS TYPE 'B'		GLASS TYPE 'C'		GLASS TYPE 'C1'		GLASS TYPE 'D'		
WIDTH	LENGTH	EXT.(+)	INT.(-)	EXT.(+)	INT.(-)	EXT.(+)	INT.(-)	EXT.(+)	INT.(-)	EXT.(+)	INT.(-)	
24"	96"	60.0	60.0	70.0	70.0	90.0	130.0	60.0	60.0	60.0	60.0	
30"		-	-	70.0	70.0	90.0	130.0	60.0	60.0	60.0	60.0	
36"		-	-	-	-	90.0	130.0	60.0	60.0	-	-	
42"		-	-	-	-	90.0	128.6	60.0	60.0	-	-	
48"		-	-	-	-	90.0	119.5	60.0	60.0	-	-	
54"		-	-	-	-	70.0	70.0	-	-	-	-	
60"		-	-	-	-	70.0	70.0	-	-	-	-	
66"		-	-	-	-	70.0	70.0	-	-	-	-	
72"		-	-	-	-	70.0	70.0	-	-	-	-	
78"		-	-	-	-	69.6	69.6	-	-	-	-	
24"		108"	-	-	70.0	70.0	90.0	130.0	60.0	60.0	60.0	60.0
30"			-	-	-	-	90.0	130.0	60.0	60.0	-	-
36"	-		-	-	-	90.0	130.0	60.0	60.0	-	-	
42"	-		-	-	-	90.0	122.5	60.0	60.0	-	-	
48"	-		-	-	-	70.0	70.0	-	-	-	-	
54"	-		-	-	-	70.0	70.0	-	-	-	-	
60"	-		-	-	-	70.0	70.0	-	-	-	-	
66"	-		-	-	-	70.0	70.0	-	-	-	-	
72"	-		-	-	-	69.8	69.8	-	-	-	-	
24"	120"		-	-	70.0	70.0	90.0	130.0	60.0	60.0	60.0	60.0
30"			-	-	-	-	90.0	130.0	60.0	60.0	-	-
36"			-	-	-	-	90.0	130.0	60.0	60.0	-	-
42"		-	-	-	-	90.0	112.4	60.0	60.0	-	-	
48"		-	-	-	-	70.0	70.0	-	-	-	-	
54"		-	-	-	-	70.0	70.0	-	-	-	-	
60"		-	-	-	-	70.0	70.0	-	-	-	-	
24"		126"	-	-	-	-	90.0	130.0	60.0	60.0	60.0	60.0
30"			-	-	-	-	90.0	130.0	60.0	60.0	-	-
36"			-	-	-	-	90.0	130.0	60.0	60.0	-	-
42"			-	-	-	-	70.0	70.0	-	-	-	-
48"			-	-	-	-	70.0	70.0	-	-	-	-
54"	-		-	-	-	70.0	70.0	-	-	-	-	
60"	-		-	-	-	70.0	70.0	-	-	-	-	
24"	132"		-	-	-	-	70.0	70.0	60.0	60.0	-	-
30"			-	-	-	-	70.0	70.0	60.0	60.0	-	-
36"			-	-	-	-	70.0	70.0	60.0	60.0	-	-
42"			-	-	-	-	70.0	70.0	-	-	-	-
48"			-	-	-	-	70.0	70.0	-	-	-	-
54"		-	-	-	-	70.0	70.0	-	-	-	-	
24"		138"	-	-	-	-	70.0	70.0	60.0	60.0	-	-
30"			-	-	-	-	70.0	70.0	60.0	60.0	-	-
36"			-	-	-	-	70.0	70.0	60.0	60.0	-	-
42"			-	-	-	-	70.0	70.0	-	-	-	-
48"			-	-	-	-	70.0	70.0	-	-	-	-
54"			-	-	-	-	70.0	70.0	-	-	-	-
24"	144"		-	-	-	-	70.0	70.0	60.0	60.0	-	-
30"			-	-	-	-	70.0	70.0	60.0	60.0	-	-
36"			-	-	-	-	70.0	70.0	-	-	-	-
42"			-	-	-	-	70.0	70.0	-	-	-	-
48"			-	-	-	-	70.0	70.0	-	-	-	-
54"			-	-	-	-	70.0	70.0	-	-	-	-
24"		150"	-	-	-	-	70.0	70.0	60.0	60.0	-	-
30"			-	-	-	-	70.0	70.0	60.0	60.0	-	-
36"			-	-	-	-	70.0	70.0	-	-	-	-
42"			-	-	-	-	70.0	70.0	-	-	-	-
48"			-	-	-	-	70.0	70.0	-	-	-	-



NOTE: WIDTH AND LENGTH DIMENSIONS CAN BE ORIENTED VERTICALLY OR HORIZONTALLY AS SHOWN ABOVE.

NOTE: GLASS CAPACITIES ON THIS SHEET ARE BASED ON ASTM E1300-09 (3 SEC. GUSTS).

PRODUCT REVISED as complying with the Florida Building Code  
 Acceptance No 14-1212-01  
 Expiration Date Aug 29, 2017  
 By *Manuel Lopez*  
 Miami Dade Product Control

Engr: JAVAD AHMAD  
 CIVIL  
 FLA. PE # 70592  
 C.A.N. 3538  
*NOV 25 2014*

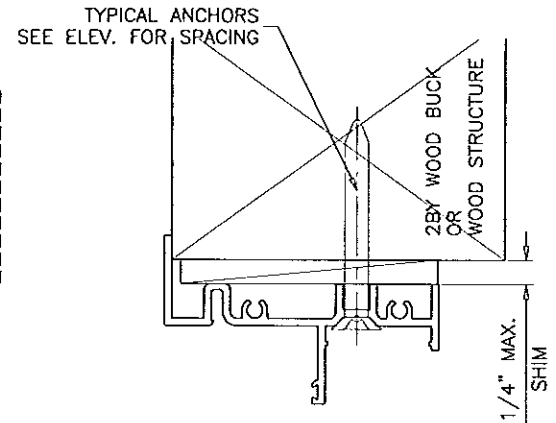
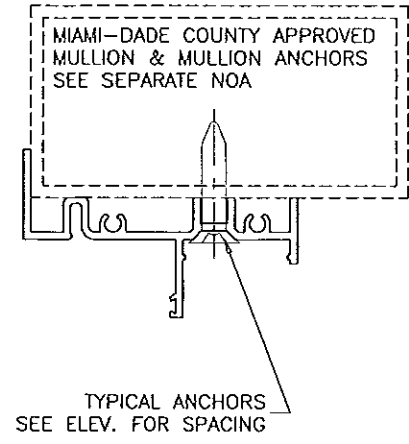
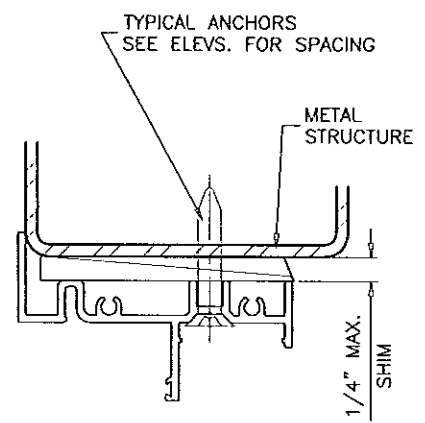
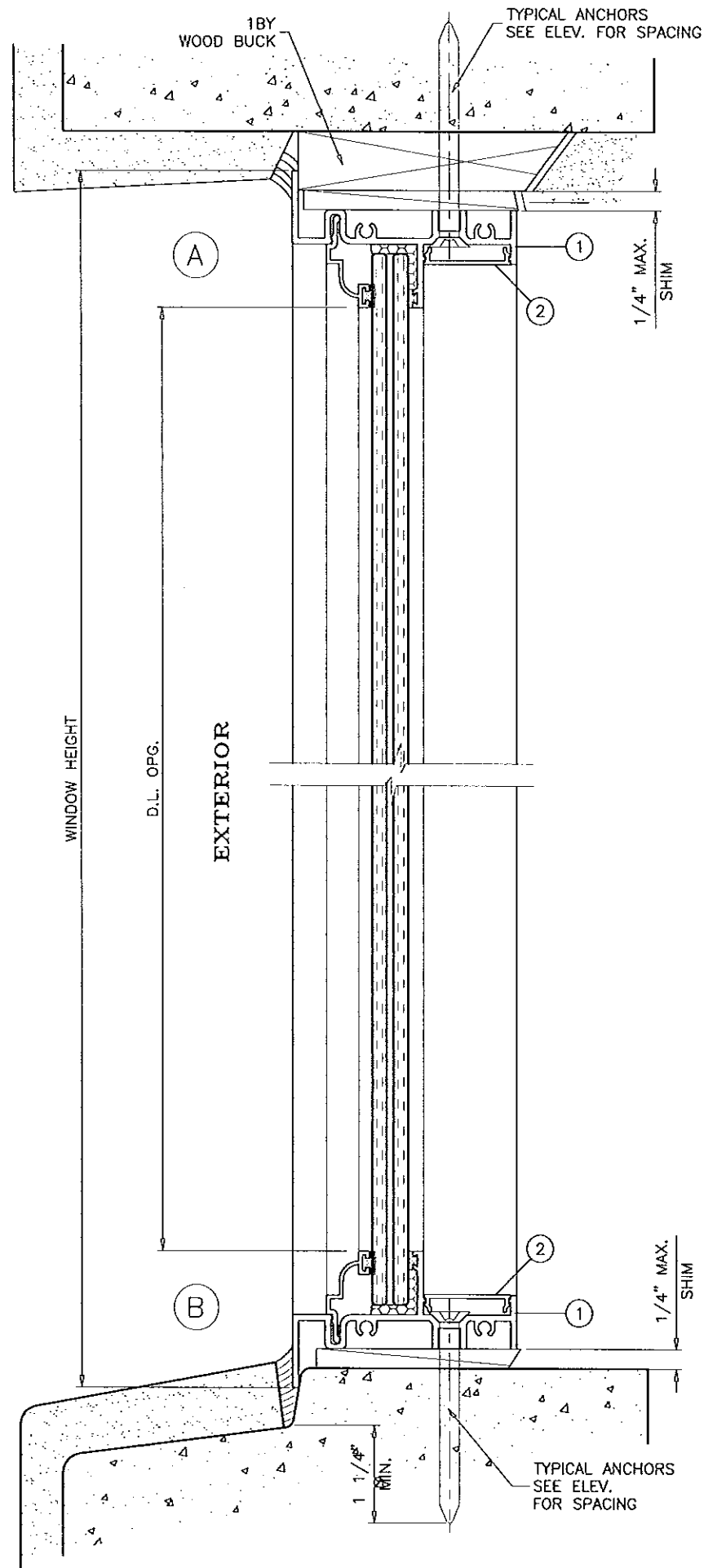
**afC**  
**AL-FAROOQ CORPORATION**  
 ENGINEERS & PRODUCT DEVELOPMENT  
 1235 S.W. 87 AVE  
 MIAMI, FLORIDA 33174  
 TEL (305) 264-8100 FAX (305) 262-6978  
 COMP-ANL W07-49SW

S-300 STORMSAFE ALUM FIXED WDW. (L.M.I.)  
**SIW IMPACT WINDOWS, LLC.**  
 975 S. CONGRESS AVE. #102  
 DELRAY BEACH, FL. 33445  
 TEL (561) 274-9392 FAX (561) 274-9262

no	date	by	description
C	06.14.10	CHART REV.	
D	10.19.10	REV. PER BCCO COMMENTS	
E	01.20.12	NO CHANGE THIS SHEET	
F	11.20.14	GENERAL REVISION	

date: 05-18-07  
 scale: 1/2" = 1"  
 dr. by: HAMID  
 chk. by:  
 drawing no. **W07-49**  
 sheet 4 of 7





WOOD BUCKS AND METAL STRUCTURE NOT BY S.I.W. MUST SUSTAIN LOADS IMPOSED BY GLAZING SYSTEM AND TRANSFER THEM TO THE BUILDING STRUCTURE.

**TYPICAL ANCHORS:** SEE ELEV. FOR SPACING  
**1/4" DIA. ULTRACON BY 'ELCO'** (Fu=177 KSI, Fy=155 KSI)  
 INTO 2BY WOOD BUCKS OR WOOD STRUCTURES  
 1-1/2" MIN. PENETRATION INTO WOOD  
 THRU 1BY BUCKS INTO CONC. OR MASONRY  
 1-1/4" MIN. EMBED INTO CONC. OR MASONRY  
 DIRECTLY INTO CONC. OR MASONRY  
 1-1/4" MIN. EMBED INTO CONC. OR MASONRY

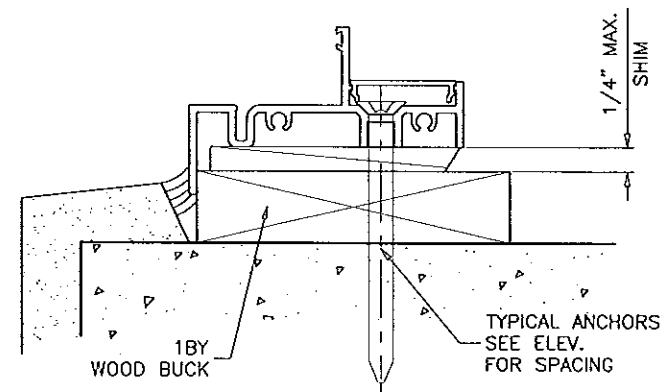
**#14 SMS OR SELF DRILLING SCREWS** (GRADE 2 CRS)  
 INTO METAL STRUCTURES  
 STEEL : 1/8" THK. MIN. (Fy = 36 KSI MIN.)  
 ALUMINUM : 1/8" THK. MIN. (6063-T5 MIN.)  
 (STEEL IN CONTACT WITH ALUMINUM TO BE PLATED OR PAINTED)

**#12 SMS OR SELF DRILLING SCREWS** (GRADE 2 CRS)  
 INTO MIAMI-DADE COUNTY APPROVED MULLIONS (MIN. THK. = 1/8")  
 (NO SHIM SPACE)

**TYPICAL EDGE DISTANCE**  
 INTO CONCRETE AND MASONRY = 2-1/2" MIN.  
 INTO WOOD STRUCTURE = 3/4" MIN.  
 INTO METAL STRUCTURE = 3/4" MIN.

WOOD AT HEAD, SILL OR JAMBS SG = 0.55 MIN.  
 CONCRETE AT HEAD, SILL OR JAMBS f'c = 3000 PSI MIN.  
 C-90 HOLLOW/FILLED BLOCK AT JAMBS f'm = 2000 PSI MIN.

**SEALANTS:**  
 ALL JOINTS AND FRAME CONNECTIONS SEALED WITH  
 CRL SMALL JOINT SEALER.



Engr: JAVAD AHMAD  
 CIVIL  
 FLA. PE # 70592  
 C.A.N. 3538

10/25/2014

PRODUCT REVISED  
 as complying with the Florida  
 Building Code  
 Acceptance No. 14-1212.01  
 Expiration Date Aug. 29, 2017

By *Manuel Perez*  
 Miami Dade Product Control

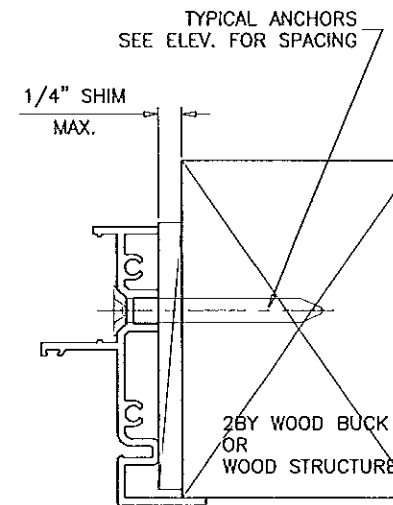
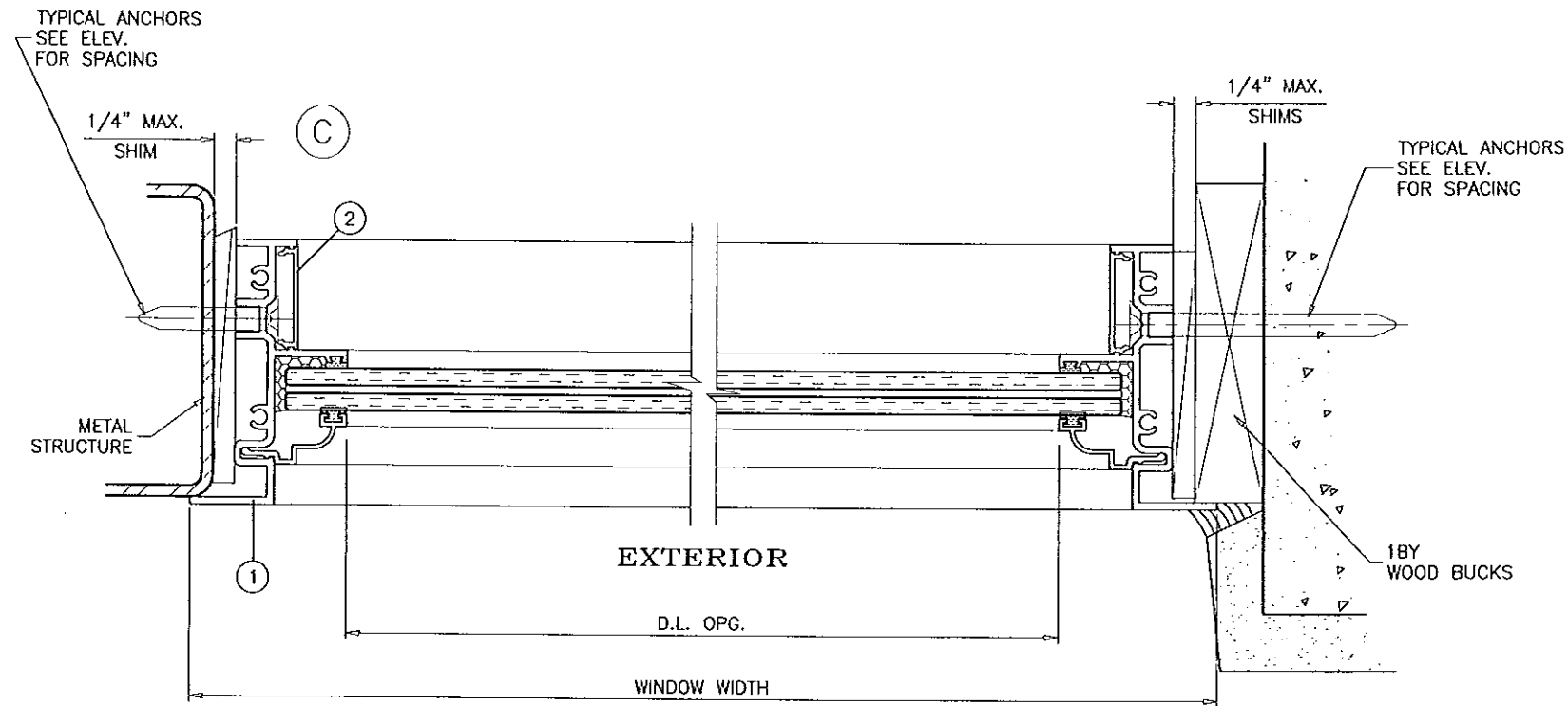
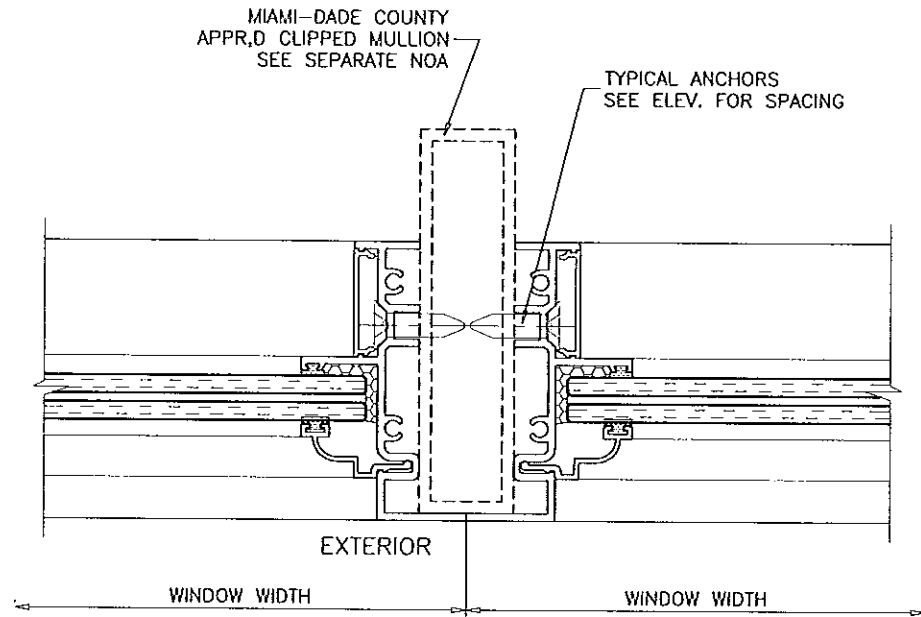
**af c**  
**AL-FAROOQ CORPORATION**  
 ENGINEERS & PRODUCT DEVELOPMENT  
 1235 S.W. 87 AVE  
 MIAMI, FLORIDA 33174  
 TEL (305) 264-8100 FAX (305) 262-6978  
 COMP-ANL\W07-49SIW

S-300 STORMSAFE ALUM FIXED WDW. (L.M.I.)  
**SIW IMPACT WINDOWS, LLC.**  
 975 S. CONGRESS AVE. #102  
 DELRAY BEACH, FL. 33445  
 TEL. (561) 274-9392 FAX. (561) 274-9262

no	date	by	description
C	06.14.10		NO CHANGE THIS SHEET
D	10.19.10		REV. PER BCCO COMMENTS
E	01.20.12		NO CHANGE THIS SHEET
F	11.20.14		GENERAL REVISION

date: 05-18-07  
 scale: 1/2" = 1"  
 dr. by: HAMID  
 chk. by:

drawing no.  
**W07-49**  
 sheet 5 of 7



Engr: JAVAD AHMAD  
 CML  
 FLA. PE # 70592  
 C.A.N. 3538

NOV 26 2014

PRODUCT REVISED  
 as complying with the Florida  
 Building Code  
 Acceptance No 14-1212-01  
 Expiration Date Aug. 27, 2017

By *Manuel Perez*  
 Miami Dade Product Control

**afc**  
**AL-FAROOQ CORPORATION**  
 ENGINEERS & PRODUCT DEVELOPMENT  
 1235 S.W. 87 AVE  
 MIAMI, FLORIDA 33174  
 TEL. (305) 264-8100 FAX. (305) 262-6978  
 COMP-ANL\W07-49SIW

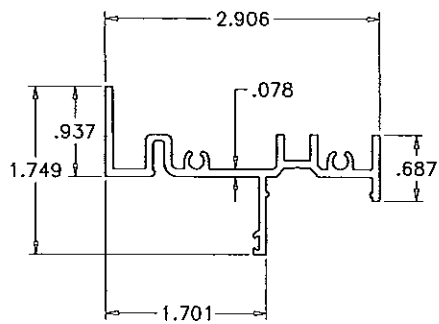
S-300 STORMSAFE ALUM FIXED WDW. (L.M.I.)  
 SIW IMPACT WINDOWS, LLC.  
 975 S. CONGRESS AVE. #102  
 DELRAY BEACH, FL. 33445  
 TEL. (561) 274-9392 FAX. (561) 274-9262

revisions:

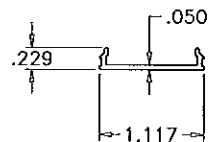
no	date	by	description
C	06.14.10		NO CHANGE THIS SHEET
D	10.19.10		REV. PER BCCO COMMENTS
E	01.20.12		NO CHANGE THIS SHEET
F	11.20.14		GENERAL REVISION

date: 05-18-07  
 scale: 1/2" = 1"  
 dr. by: HAMID  
 chk. by:

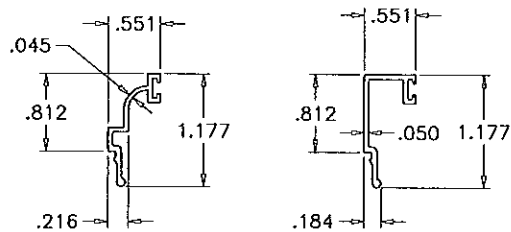
drawing no.  
**W07-49**  
 sheet 6 of 7



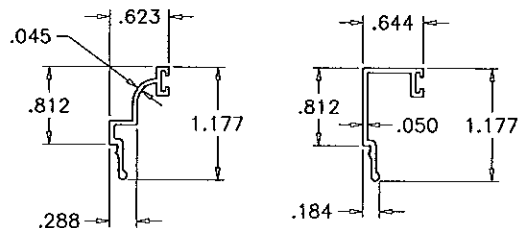
① FRAME



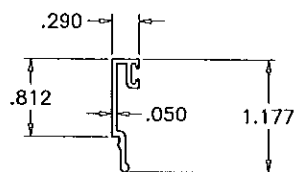
② FRAME COVER (OPTIONAL)



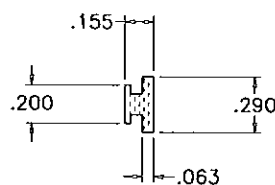
③ GLAZING BEADS (7/16" GLASS)



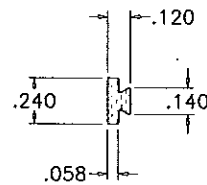
③A GLAZING BEADS (5/16" GLASS)



③.2 GLAZING BEAD (INSUL. LAM. GLASS)

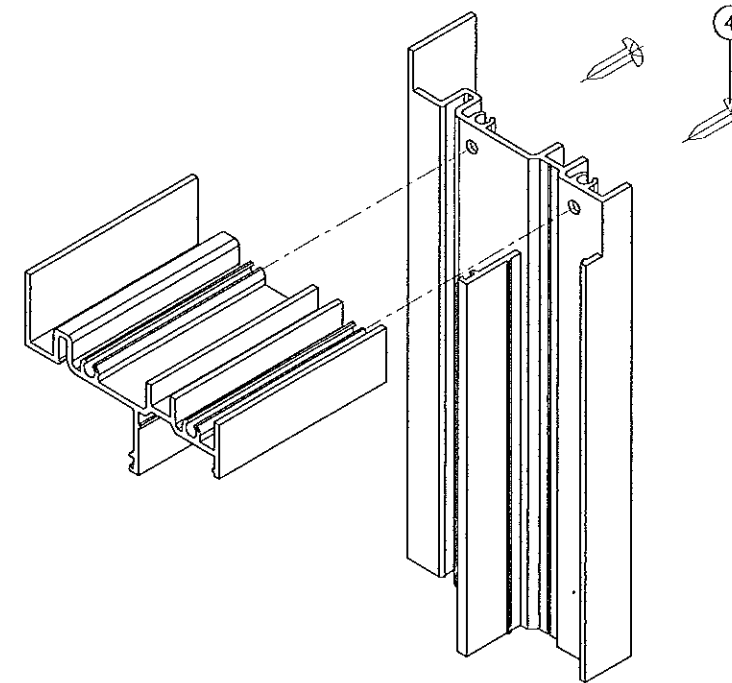


⑤ EXTERIOR GLAZING SPACER  
SCALE 1:1



⑥ INTERIOR GLAZING SPACER  
SCALE 1:1

ITEM	PART #	QUANTITY	DESCRIPTION	MATERIAL	MANF./SUPPLIER/REMARKS
1	SIW301	4	WINDOW FRAME	6063-T6	-
2	SIW303	4	FRAME COVER (OPTIONAL)	6063-T6	-
3	SIW108	4	GLAZING BEAD (7/16" GLASS)	6063-T6	-
3.1	SIW127	4	ALT. GLAZING BEAD (7/16" GLASS)	6063-T6	-
3A	SIW112	4	GLAZING BEAD (5/16" GLASS)	6063-T6	-
3.1A	SIW128	4	ALT. GLAZING BEAD (5/16" GLASS)	6063-T6	-
3.2	SIW117	4	GLAZING BEAD (INSUL. LAM. GLASS)	6063-T6	-
4	#10 X 1-1/2"	2/ CORNER	ASSEMBLY SCREWS	CRS	PH SMS
5	5531	AS REQD.	EXTERIOR GLAZING SPACER, DUROMETER 70±5 SHORE A	SANTOPRENE	CENTRAL PLASTICS
6	5530	AS REQD.	INTERIOR GLAZING SPACER, DUROMETER 70±5 SHORE A	SANTOPRENE	CENTRAL PLASTICS
7	-	2/ LITE	SETTING BLOCK, DUROMETER 85±5 SHORE A	EPDM	-



TYP. CORNER DETAIL

Engr: JAVAD AHMAD  
CIVIL  
FLA. PE # 70592  
C.A.N. 3538

NOV 25 2014

PRODUCT REVISED  
as complying with the Florida  
Building Code  
Acceptance No 14-1212.01  
Expiration Date Aug 29, 2017

By: *Manuel Ruiz*  
Miami Dade Product Control

**af c**  
**AL-FAROOQ CORPORATION**  
ENGINEERS & PRODUCT DEVELOPMENT  
1235 S.W. 87 AVE  
MIAMI, FLORIDA 33174  
TEL (305) 264-8100 FAX (305) 262-6978  
COMP-ANL W07-49SIW

S-300 STORMSAFE ALUM FIXED WDW. (L.M.I.)  
**SIW IMPACT WINDOWS, LLC.**  
975 S. CONGRESS AVE. #102  
DELRAY BEACH, FL. 33445  
TEL. (561) 274-9392 FAX. (561) 274-9262

no	date	by	description
C	06.14.10		INSUL. LAM. GLASS ADD.
D	10.19.10		REV. PER BCCO COMMENTS
E	01.20.12		NO CHANGE THIS SHEET
F	11.20.14		GENERAL REVISION

date: 05-18-07  
scale: 1/2" = 1"  
dr. by: HAMID  
chk. by:

drawing no.  
**W07-49**  
sheet 7 of 7