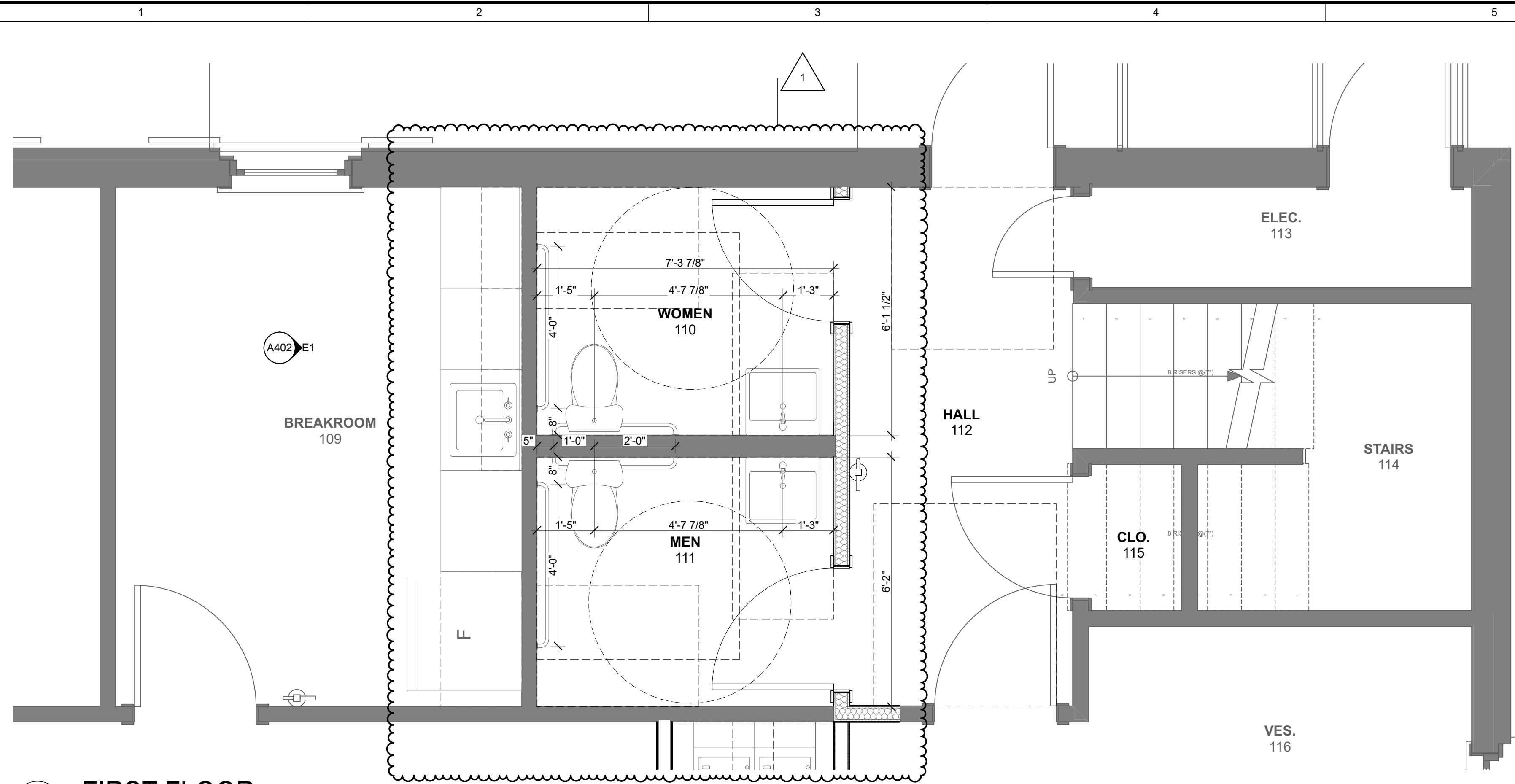


CONSULTANT:

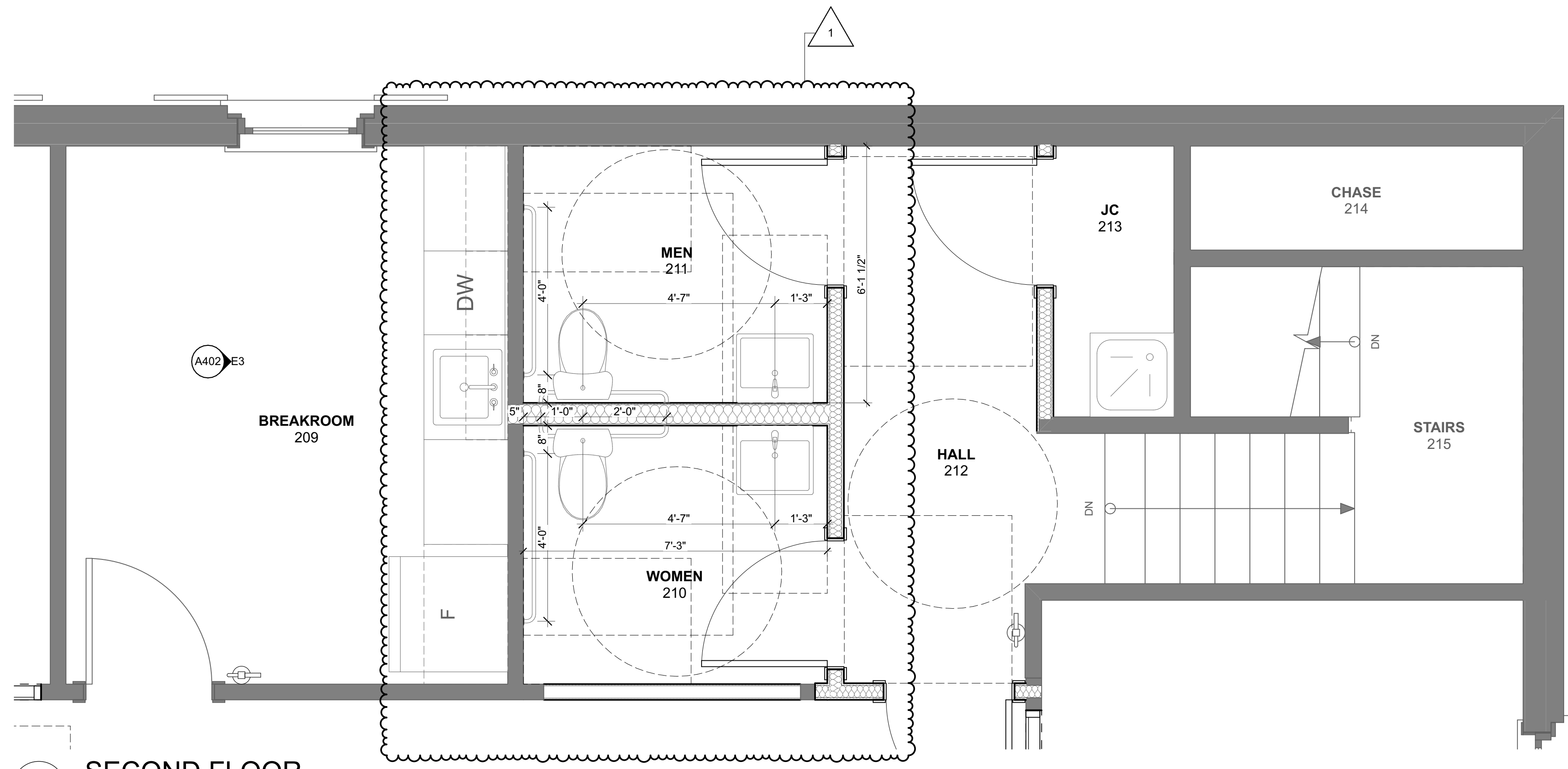
GONZALEZ
GONZALEZ OFFICE BUILDING

PROJECT NUMBER: 2022-0288

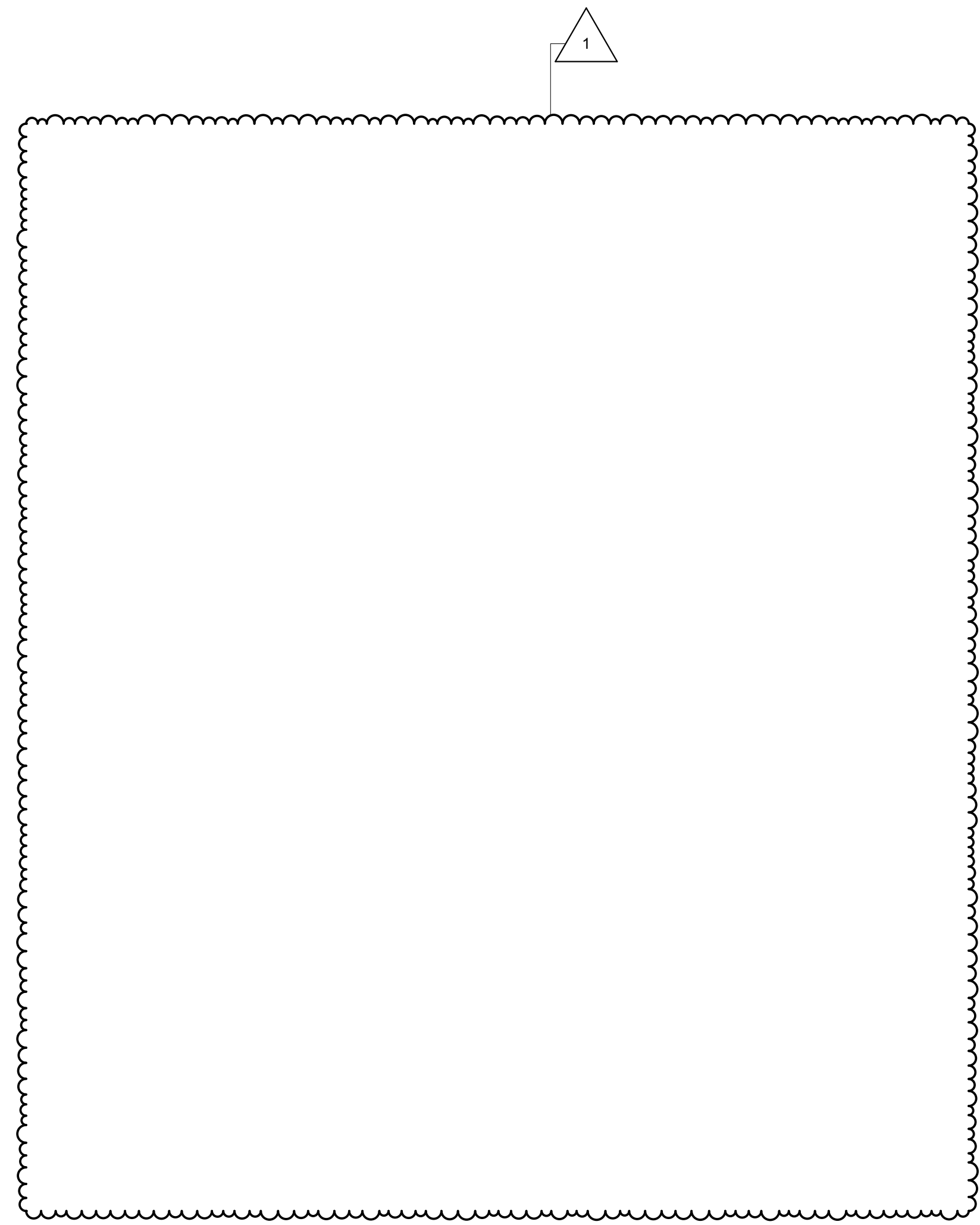
- GENERAL COMMENTS:**
1. ALL DIMENSIONS NOTED ON THIS PAGE ARE FROM FACE OF FINISHED SURFACE UNLESS NOTED OTHERWISE.
 2. PROVIDE BLOCKING AS REQUIRED TO SECURELY SUPPORT ALL RESTROOM ACCESSORIES.
 3. ALL RESTROOM ACCESSORIES MUST BE INSTALLED SO THEY ARE ADA COMPLIANT. ELEVATIONS INDICATE PREFERRED MOUNTING LOCATION.
 4. THE ADA CODE HAS CONSTRUCTION TOLERANCE BUILT INTO THE CODE. IF ADJUSTMENTS FROM THE DIMENSIONS SHOWN ARE NECESSARY, CONTRACTOR IS TO VERIFY THAT ALL ADA GUIDELINES ARE STILL FOLLOWED.
 5. SEE A1/LS003 FOR MOUNTING HEIGHTS.
 6. FOR FINISHES, SEE FINISH SCHEDULES ON SHEET A001.
 7. CABINETS ARE BUILT IN AND WITHIN THE SCOPE OF PROJECT. SEE CABINET DETAILS ON SHEET A402 FOR MORE INFORMATION.



D1 FIRST FLOOR
SCALE: 1/2" = 1'-0"



A1 SECOND FLOOR
SCALE: 1/2" = 1'-0"



DATE	DESCRIPTION	BY
	1. SUBMISSION TITLE	
	2. CONSTRUCTION DOCUMENTS	
	3. MAKE	
	4. WORK IN Progress	
	5. REVISION TITLE	
	6. AS 01: RESPONSE TO COMMENTS	
	7. WIP	
	8. MAKE	
	9. WORK IN Progress	

ENLARGED PLAN

AS INSTRUMENTS OF SERVICE, THESE DRAWINGS AND THE DESIGN ARE THE PROPERTY OF THE DODSTONE ARCHITECTS. NO PART OF THESE DRAWINGS OR STATE AND FEDERAL COPYRIGHT LAWS, REPRODUCTION OR USE OF THESE DRAWINGS OTHER THAN FOR THE PROJECT INTENDED WITHOUT WRITTEN CONSENT FROM THE DODSTONE GROUP ARCHITECTS IS PROHIBITED.

REVIEWED BY: JD DRAWN BY: LS