

GENESIS VERTICAL PLATFORM LIFT:

Code Reference: ASME A18.1–2017 "Safety Standard for Platforms Lifts and Stairway Chairlifts"

General: Color – Standard (Silver Moon powdered aluminium extrusions with 16 ga. galvanized steel panels powder coated Silver Moon, and 3/16" clear plexi panels)
 Indoor Unit – Floor Mount (Ramp Required)
 ANSI Z97.1 Plexiglass Etching
 Number of Stops – Two Stop Kit

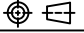

Drive Mast Model – GVL–EN–72
 Chain Hydraulic drive system c/w Continuous Mains Power with Auxiliary Battery Power System, Platform Emergency Lowering (shipped loose), Shoring Pin, & Pressure Gauge
 Motor – 2.2 kW, (3.00 HP), 24 VDC
 Travel Speed – 340 kg @ 5.2 m/min [750 lb @ 17 ft/min]
 Power Supply – 120 VAC, single phase, 60 Hz, on a dedicated 15 amp. circuit
 Equipped with – Electrical Disconnect (shipped loose) (x1), Oil Recovery System

Controls: Platform Controls – Push–Button (Tactile) Type c/w Illuminated Directional Buttons, Courtesy Lighting, Illuminated Round (push/pull) Emergency Stop Switch & Audible Alarm
 Lower Landing Call Station – Push–Button (Tactile) Frame Mount
 Upper Landing Call Station – Push–Button (Tactile) Frame Mount
 Equipped with – Keyed Operation Kit

Platform: Size – Standard c/w grab rail, anti–skid deck and 1100mm [43 1/4"] high walls
 Configuration – (90°) Exit/Entry
 Capacity – Maximum 340 kg [750 lb] operating load
 Equipped with – Auto–Dialer Phone

Door/Gates: Lower – 36" wide Clear Plexiglass Door c/w Powerlock 2000 Interlock & Omaha Door Stop & Garaventa Power Door Operator
 Upper – 42" wide Clear Plexiglass Gate c/w Powerlock 2000 Interlock & Omaha Door Stop & Garaventa Power Door Operator

Enclosure: Panels – Clear Plexiglass & Steel
 Total Unit Weight – Approximately 1010 lb [459 kg]
 Lifting Ht. (H1) – 1626mm [64"] lower to upper floor
 Equipped with – Anchor & Shim Kit, 1:12 Ramp

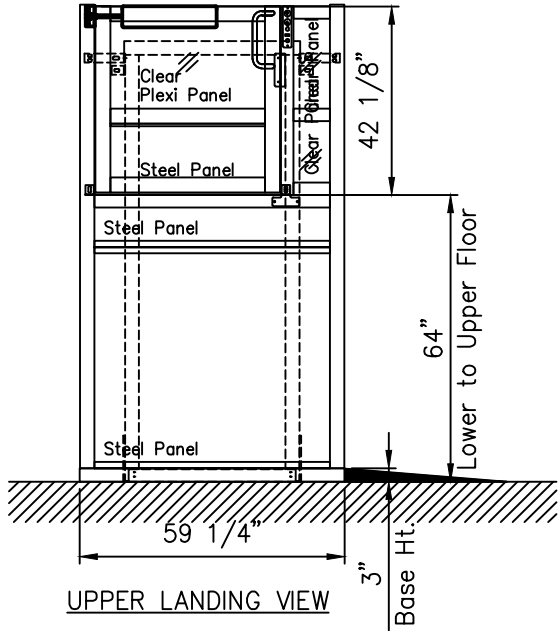
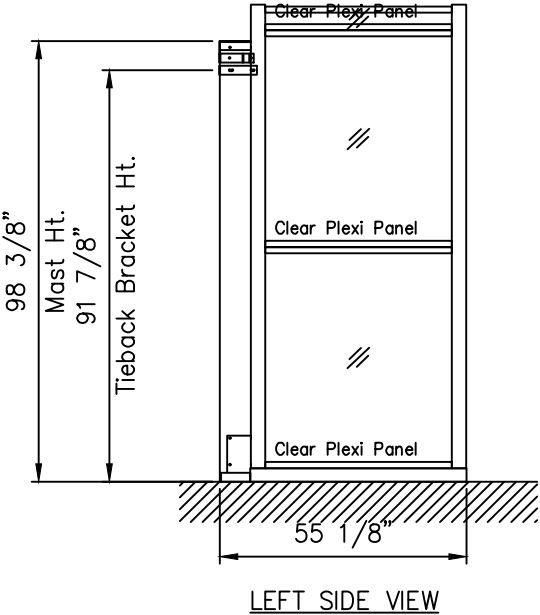
A	INITIAL RELEASE	UNITS: INCHES	JUN/28/22	AU	
REV.	SCALE: 1:40	TOLERANCES: DIMENSIONAL ±1/32 ANGULAR ±0.5°	PROJECTION: 	DATE	DRN.BY
		GENESIS ENCLOSURE – iGOLDD DRAWING			76012-IG-A
		SWIM TECH			
		7010 NW 23RD WAY, UNIT B			
		GAINESVILLE FL 32653		PAGE 1 OF 5	
		Custom Lifts, Inc.			

⚡ DEDICATED CIRCUIT SUPPLIED BY OTHERS:
 120 VAC / 1 PHASE – 60 Hz.
 Conduit and devices to suit local codes and
 a recommended 15 amp. dedicated circuit.

LIFT HEIGHT
 H1=64"

(H1=Lower to Upper Floor)

Attach Mast to
 Wall per Loading
 Diagram

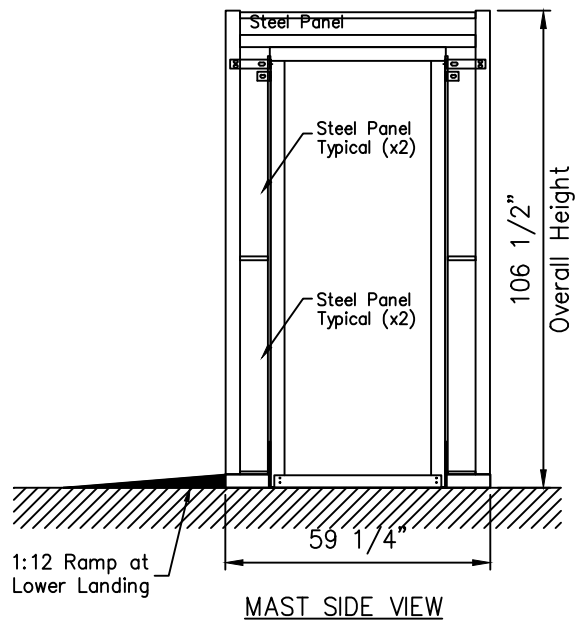
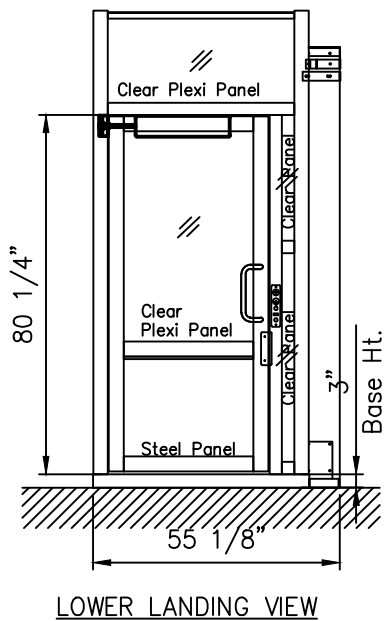



A	INITIAL RELEASE	UNITS: INCHES	JUN/28/22	AU			
REV.	SCALE: 1:40	TOLERANCES: DIMENSIONAL ±1/32	ANGULAR ±0.5°	PROJECTION:	DATE	DRN.BY	CHK.BY

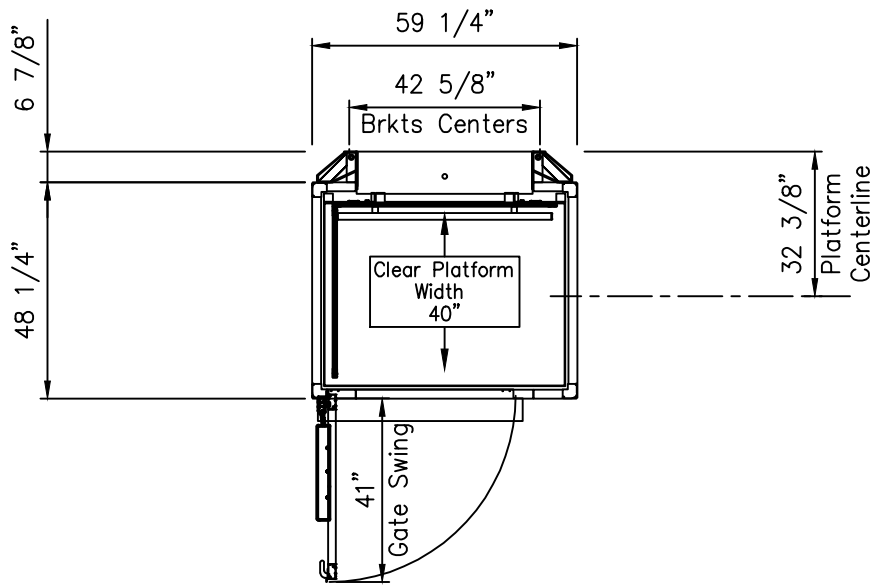


GENESIS ENCLOSURE – iGOLDD DRAWING
 SWIM TECH
 7010 NW 23RD WAY, UNIT B
 GAINESVILLE FL 32653
 Custom Lifts, Inc.

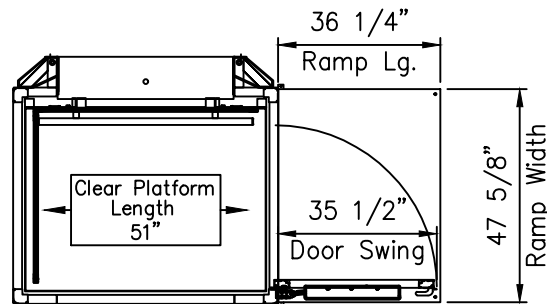
76012-IG-A



A	INITIAL RELEASE		UNITS: INCHES	JUN/28/22	AU		
REV.	SCALE: 1:40	TOLERANCES: DIMENSIONAL ±1/32	ANGULAR ±0.5°	PROJECTION:	DATE	DRN.BY	CHK.BY
				GENESIS ENCLOSURE - iGOLDD DRAWING SWIM TECH 7010 NW 23RD WAY, UNIT B GAINESVILLE FL 32653			76012-IG-A
				PAGE 3 OF 5 Custom Lifts, Inc.			



UPPER LANDING PLAN VIEW



LOWER LANDING PLAN VIEW

A	INITIAL RELEASE	UNITS: INCHES	JUN/28/22	AU			
REV.	SCALE: 1:40	TOLERANCES: DIMENSIONAL ±1/32	ANGULAR ±0.5°	PROJECTION:	DATE	DRN.BY	CHK.BY



GENESIS ENCLOSURE - iGOLDD DRAWING
 SWIM TECH
 7010 NW 23RD WAY, UNIT B
 GAINESVILLE FL 32653
 Custom Lifts, Inc.

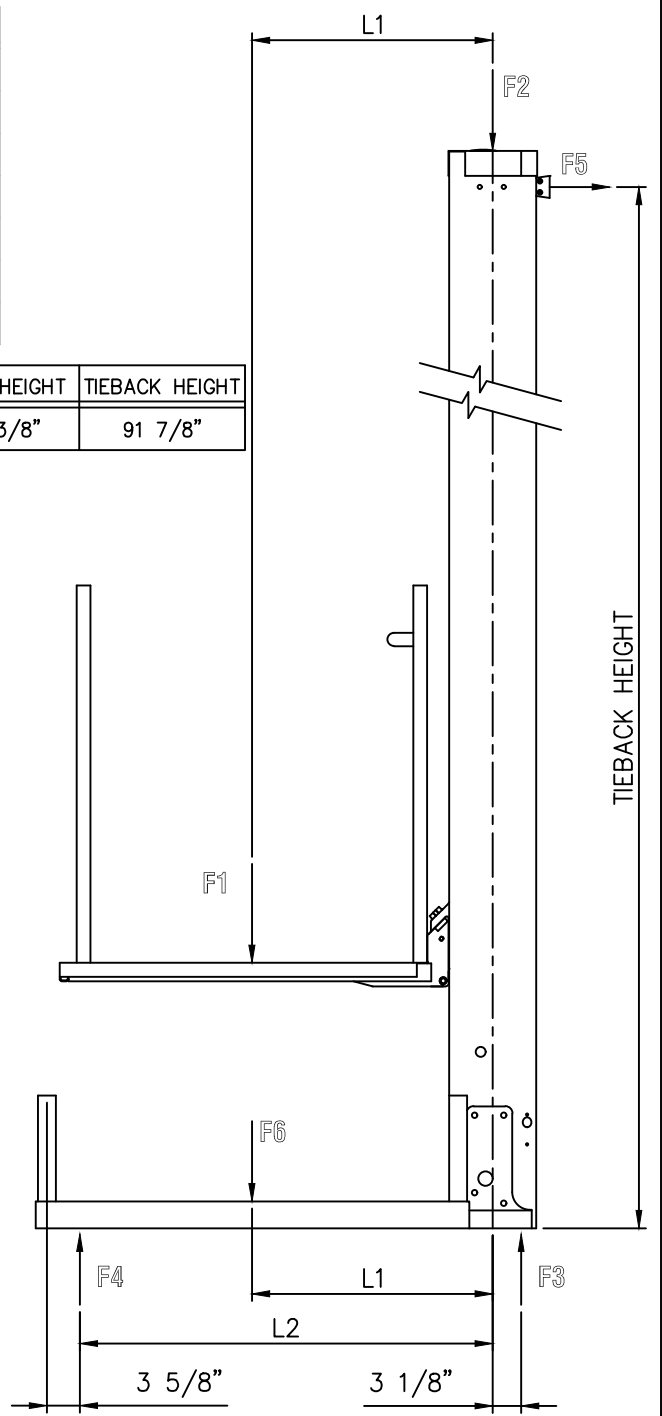
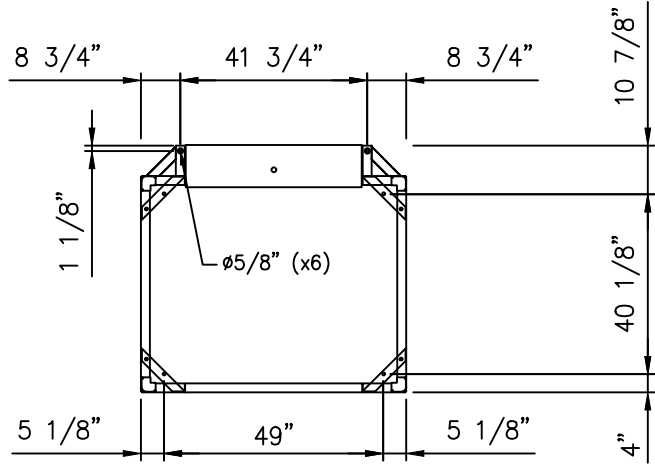
76012-IG-A

SYM.	DESCRIPTION	VALUE (MAX.)
F1 = 1000 lb	PAYLOAD (MAX.)	3335 N [750 lb]
	CAR (PLATFORM) WEIGHT	1110 N [250 lb]
F2	MAST WEIGHT	1157 N [260 lb]
F3	FLOOR REACTION	6183 N [1390 lb]
F4	FLOOR REACTION	1668 N [375 lb]
F5	TIEBACK REACTION	1388 N [312 lb]
F6	ENCLOSURE WEIGHT	2224 N [500 lb]

L1	L2	PLATFORM SIZE	MODEL	MAST HEIGHT	TIEBACK HEIGHT
26 7/8"	46 1/8"	STANDARD	72"	98 3/8"	91 7/8"

SPECIAL NOTE:
 These are reaction forces generated by the lift. Adhere to local building codes, regulations, and safety factors for supporting structures. Consult a structural engineer or architect in your jurisdiction. Wind loading effects are not considered in these calculations. Consult manufacturer.

BASE MOUNTING DETAILS



The information contained in this drawing constitutes the Intellectual Property, including, but not limited to, knowledge, trade secrets, and proprietary information which is the exclusive property of Garaventa Accessibility. All information contained in this drawing is to be held in the strictest confidence by the recipient, and is not to be copied, disclosed to, or transmitted to any third parties without the express written authorization of Garaventa Accessibility.
 © 2005 GARAVENTA ACCESSIBILITY.

DETAIL 1 – ENCLOSURE MODEL LOADING DIAGRAM

A	INITIAL RELEASE	UNITS: INCHES	JUN/28/22	AU
REV.	SCALE: 1:40	TOLERANCES: DIMENSIONAL ±1/32 ANGULAR ±0.5°	PROJECTION:	DATE DRN.BY CHK.BY



GENESIS ENCLOSURE – iGOLDD DRAWING
 SWIM TECH
 7010 NW 23RD WAY, UNIT B
 GAINESVILLE FL 32653
 Custom Lifts, Inc.

76012-IG-A