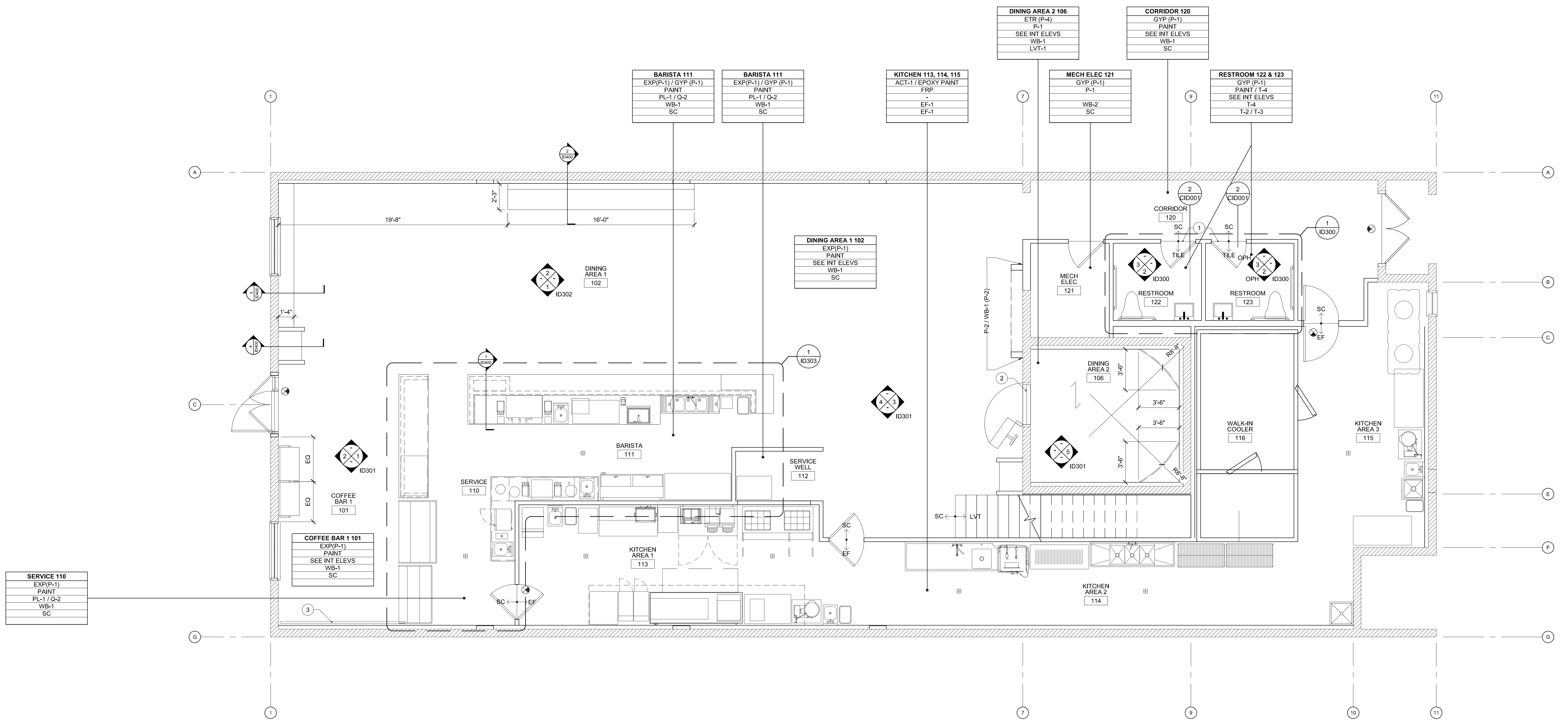




Not Valid for Permits  
Without Copy Approvals  
Seal and Date

LEGEND	KEY NOTES	GENERAL NOTES							
GRAIN/FLOOR PATTERN DIRECTION  <table border="1"> <tr><td>### ROOM NAME</td></tr> <tr><td>CEILING</td></tr> <tr><td>WALL</td></tr> <tr><td>CASEWORK</td></tr> <tr><td>BASE</td></tr> <tr><td>FLOORING</td></tr> <tr><td>REMARKS</td></tr> </table> FINISH SCHEDULE (BY ROOM)  INTERIOR ELEVATION MARKER	### ROOM NAME	CEILING	WALL	CASEWORK	BASE	FLOORING	REMARKS	<ol style="list-style-type: none"> <li>1 PROVIDE TR-2 FLOOR TRIM AT TILE TO CONCRETE FLOOR TRANSITION.</li> <li>2 CONTRACTOR TO ASSESS IF THRESHOLD/FRAME OF VAULT DOOR CAN BE SAW CUT TO PROVIDE AN EVEN FLOOR TRANSITION BETWEEN ROOMS</li> <li>3 THREE (3) DIGITAL MENU BOARDS &amp; TWO (2) CHALKBOARD MENUS; PROVIDE WALL BLOCKING AND ELECTRICAL/DATA CONNECTIONS PER OWNER DIRECTION</li> </ol>	<ol style="list-style-type: none"> <li>1 REFER TO SHEET ID001 FOR INTERIOR FINISH LIST AND GENERAL NOTES</li> <li>2 REFER TO SERIES ID300 INTERIOR ELEVATIONS FOR FURTHER INFORMATION</li> <li>3 DOORS MAY NEED TO BE UNDERCUT TO ALLOW FOR TRANSITIONS BETWEEN MATERIALS AT INTERIOR THRESHOLDS</li> <li>4 ALL FLOOR TRANSITIONS TO BE AT CENTERLINE OF DOOR U.N.O.</li> <li>5 CONTRACTOR TO PROVIDE BLOCKING AS REQUIRED FOR ALL WALL MOUNTED EQUIPMENT AND ACCESSORIES</li> <li>6 FIXTURE DIMENSIONS ARE FROM FACE OF FRAMING TO CENTERLINE OF FIXTURE, UNO; ALL OTHER FINISH DIMENSIONS ARE TO FACE OF FINISH, UNO</li> <li>7 FIELD FLOORING MATERIALS ARE NOT LABELED FOR CLARITY; REFER TO FLOOR FINISH LEGEND FOR ACCENT FLOORING MATERIAL</li> <li>8 CONTRACTOR TO CENTER AND BALANCE TILE WITHIN EACH ROOM</li> <li>9 EXTEND FLOORING PATTERN INTO TOE KICKS AND OPEN KNEE SPACES</li> <li>10 REFER TO FOOD SERVICE DRAWINGS FOR ALL KITCHEN/BARISTA EQUIPMENT INFORMATION</li> </ol>
### ROOM NAME									
CEILING									
WALL									
CASEWORK									
BASE									
FLOORING									
REMARKS									



SERVICE 110
EXP(P-1)
PAINT
PL-1 / Q-2
WB-1
SC

COFFEE BAR 1 101
EXP(P-1)
PAINT
SEE INT ELEVS
WB-1
SC

BARISTA 111
EXP(P-1) / GYP (P-1)
PAINT
PL-1 / Q-2
WB-1
SC

BARISTA 111
EXP(P-1) / GYP (P-1)
PAINT
PL-1 / Q-2
WB-1
SC

KITCHEN 113, 114, 115
ACT-1 / EPOXY PAINT
FRP
EF-1
EF-1

DINING AREA 2 106
ETR (P-4)
P-1
SEE INT ELEVS
WB-1
LVT-1

CORRIDOR 120
GYP (P-1)
PAINT
SEE INT ELEVS
WB-1
SC

RESTROOM 122 & 123
GYP (P-1)
PAINT / T-4
SEE INT ELEVS
T-4
T-2 / T-3

DINING AREA 1 102
EXP(P-1)
PAINT
SEE INT ELEVS
WB-1
SC

Rev.	Date	By	Description
01	1/22/22	CG	PRICING SET
02			
03			
04			
05			
06			
07			
08			
09			
10			
11			
12			
13			
14			
15			
16			
17			
18			



Project Number: 22.3024.00
Drawn By: CG
Checked By:
Project Name:
SOUTHERN GROUNDS & CO
556 CENTRAL AVE
ST. PETERSBURG, FL
Drawing Name:
FLOOR PLAN
LEVEL 1

INTERIOR REFERENCE PLAN - LEVEL 1

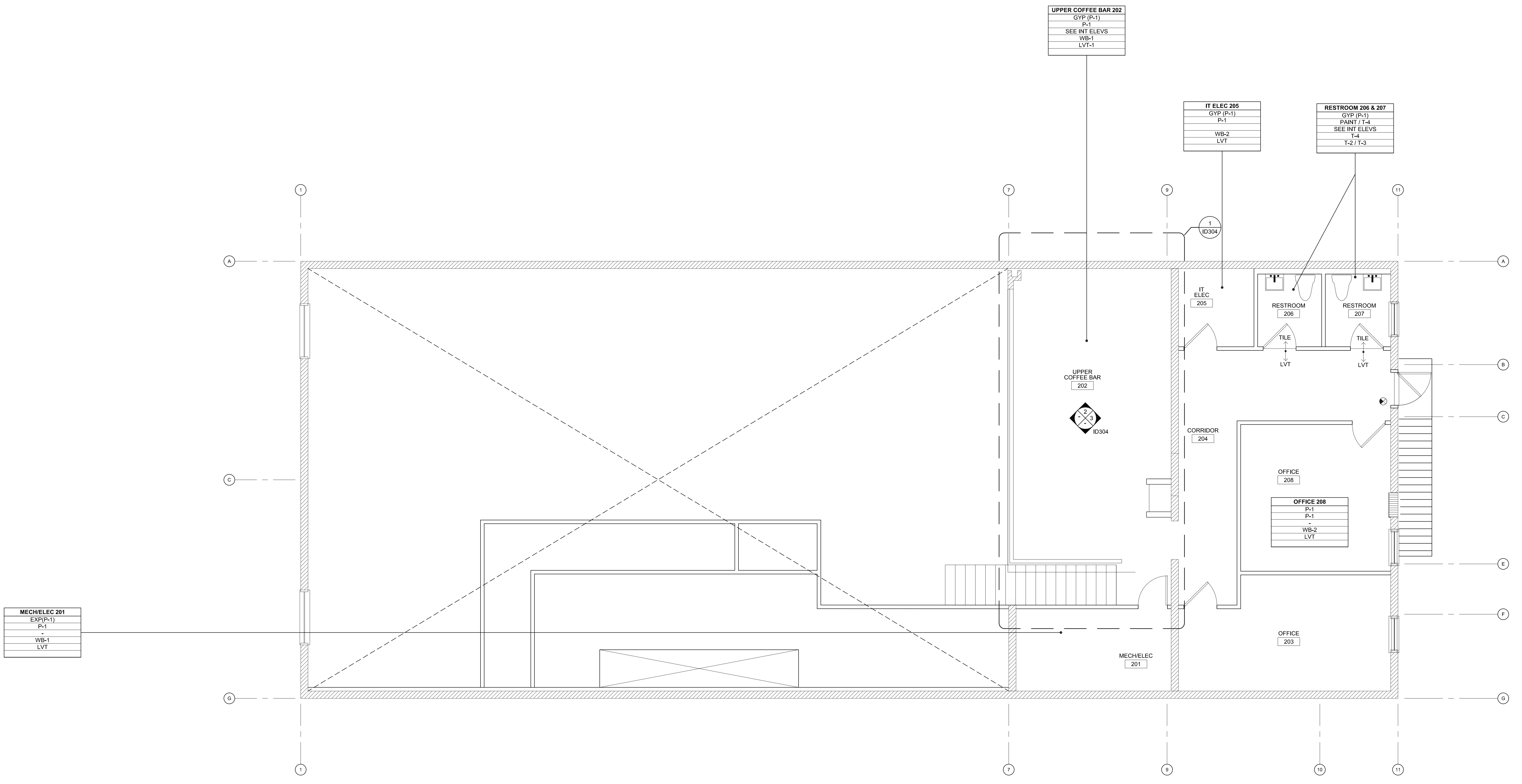
1/4" = 1'-0"

ID201

Group 4 Design, Inc. is a registered professional architectural firm in the State of Florida. The design of this project was prepared by Group 4 Design, Inc. under the supervision of a registered professional architect. The design of this project was prepared by Group 4 Design, Inc. under the supervision of a registered professional architect.

Not Valid for Permitting  
Without Seal, Signature,  
Date and Date

LEGEND	KEY NOTES	GENERAL NOTES							
<p>GRAIN/FLOOR PATTERN DIRECTION</p> <table border="1"> <tr><th>### ROOM NAME</th></tr> <tr><td>CEILING</td></tr> <tr><td>WALL</td></tr> <tr><td>CASEWORK</td></tr> <tr><td>BASE</td></tr> <tr><td>FLOORING</td></tr> <tr><td>REMARKS</td></tr> </table> <p>FINISH SCHEDULE (BY ROOM)</p> <p>INTERIOR ELEVATION MARKER</p>	### ROOM NAME	CEILING	WALL	CASEWORK	BASE	FLOORING	REMARKS	<ol style="list-style-type: none"> <li>1 PROVIDE TR-2 FLOOR TRIM AT TILE TO CONCRETE FLOOR TRANSITION.</li> <li>2 CONTRACTOR TO ASSESS IF THRESHOLD/FRAME OF VAULT DOOR CAN BE SAW CUT TO PROVIDE AN EVEN FLOOR TRANSITION BETWEEN ROOMS</li> <li>3 THREE (3) DIGITAL MENU BOARDS &amp; TWO (2) CHALKBOARD MENUS; PROVIDE WALL BLOCKING AND ELECTRICAL/DATA CONNECTIONS PER OWNER DIRECTION</li> </ol>	<ol style="list-style-type: none"> <li>1. REFER TO SHEET ID001 FOR INTERIOR FINISH LIST AND GENERAL NOTES</li> <li>2. REFER TO SERIES ID300 INTERIOR ELEVATIONS FOR FURTHER INFORMATION</li> <li>3. DOORS MAY NEED TO BE UNDERCUT TO ALLOW FOR TRANSITIONS BETWEEN MATERIALS AT INTERIOR THRESHOLDS</li> <li>4. ALL FLOOR TRANSITIONS TO BE AT CENTERLINE OF DOOR U.N.O.</li> <li>5. CONTRACTOR TO PROVIDE BLOCKING AS REQUIRED FOR ALL WALL MOUNTED EQUIPMENT AND ACCESSORIES</li> <li>6. FIXTURE DIMENSIONS ARE FROM FACE OF FRAMING TO CENTERLINE OF FIXTURE, UNO; ALL OTHER FINISH DIMENSIONS ARE TO FACE OF FINISH, UNO</li> <li>7. FIELD FLOORING MATERIALS ARE NOT LABELED FOR CLARITY; REFER TO FLOOR FINISH LEGEND FOR ACCENT FLOORING MATERIAL</li> <li>8. CONTRACTOR TO CENTER AND BALANCE TILE WITHIN EACH ROOM</li> <li>9. EXTEND FLOORING PATTERN INTO TOE KICKS AND OPEN KNEE SPACES</li> <li>10. REFER TO FOOD SERVICE DRAWINGS FOR ALL KITCHEN/BARISTA EQUIPMENT INFORMATION</li> </ol>
### ROOM NAME									
CEILING									
WALL									
CASEWORK									
BASE									
FLOORING									
REMARKS									



No.	Date	By	Description	ISSUES and REVISIONS																
				1	2	3	4	5	6	7	8	9	10	11	12	13	14	15	16	17
01	1/22/22	CMB	PRICING SET																	



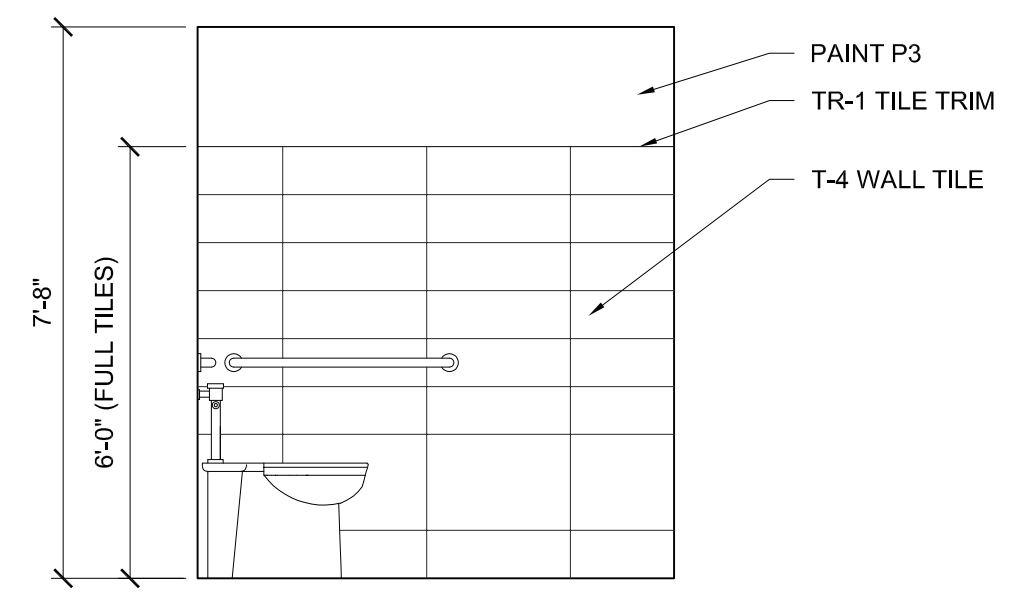
Project Number: 22.3024.00  
 Drawn By: CG  
 Checked By:  
 Project Name:  
 SOUTHERN GROUNDS & CO  
 556 CENTRAL AVE  
 ST. PETERSBURG, FL  
 Drawing Name:  
 FLOOR PLAN  
 LEVEL 2

FLOOR PLAN - LEVEL 2

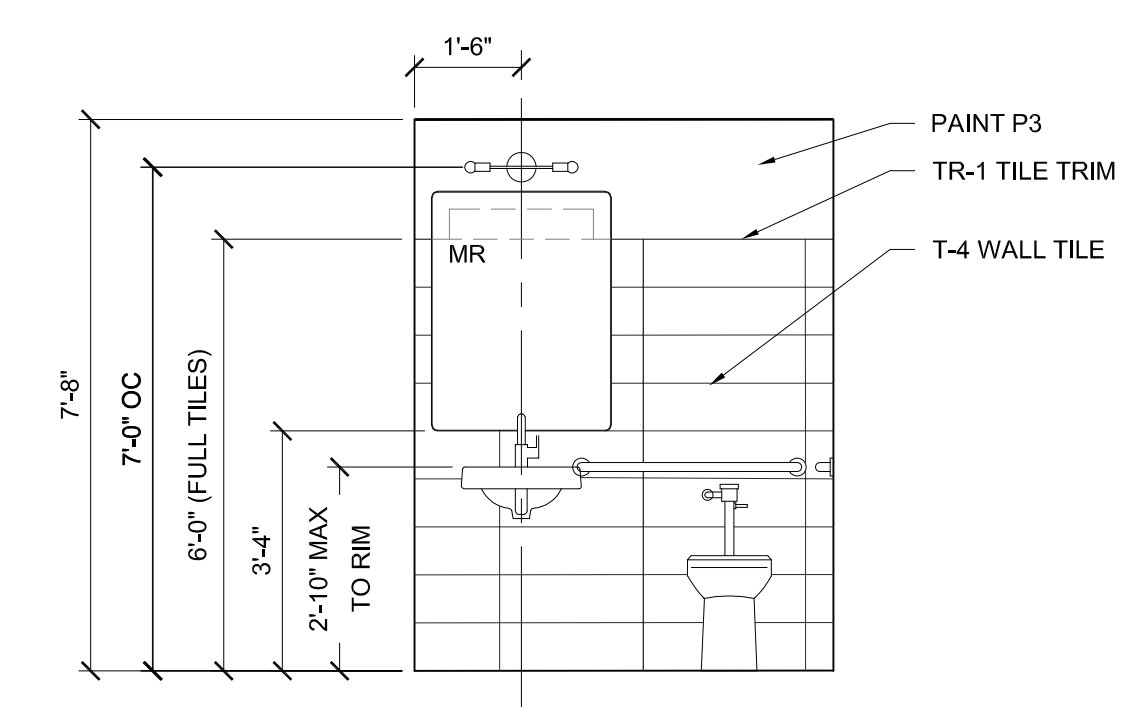
1/4" = 1'-0"

©2022 Group 4 Design, Inc. All rights reserved. This drawing is the property of Group 4 Design, Inc. and is not to be reproduced, altered, copied, or used in any way without the express written permission and consent of Group 4 Design, Inc.

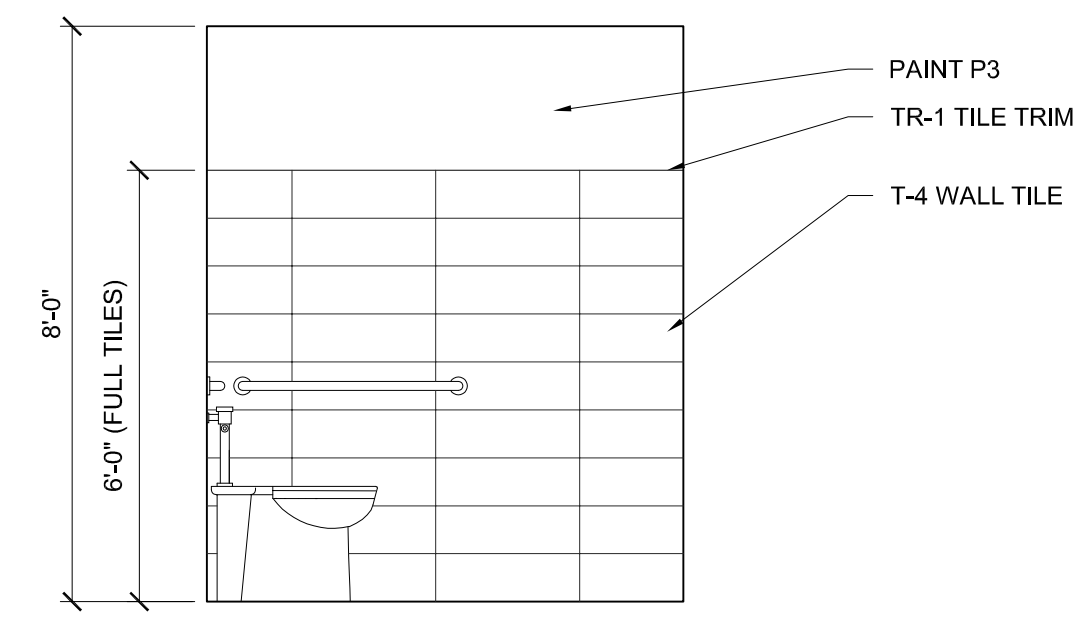
GENERAL NOTES		TOILET ACCESSORY LEGEND	
1.	REFER TO SHEETS ID080 FOR FURTHER SPECIFICATION INFORMATION.	BCS	BABY CHANGING STATION MFR - KOALA KARE PRODUCTS PRODUCT - KB200-01 HORIZONTAL WALL MOUNTED FINISH - GREY (01) SIZE - 36-9/16"W X 22-1/4"H X 3-3/4"D WHEN CLOSED INSTALL - REFER TO MANUFACTURER'S RECOMMENDATIONS FOR ADA COMPLIANT INSTALLATION
2.	REFER TO SHEET ID001 FOR CASEWORK GENERAL NOTES	GB	GRAB BAR MFR - BOBRICK OR EQUAL PRODUCT - STRAIGHT GRAB BAR FINISH - SATIN FINISH, STAINLESS STEEL SIZE - VARIES - SEE 17A003b FOR REGS INSTALL - REFER TO A003b
3.	CONTRACTOR TO PROVIDE BLOCKING AS REQUIRED FOR ALL WALL MOUNTED EQUIPMENT, SIGNAGE AND ACCESSORIES.	MR	FRAMED MIRROR MFR - HOWARD ELLIOTT PRODUCT - STEELE MIRROR ITEM # - 48102 FINISH - BLACK SIZE - 30"W X 40"H X 2" PROJECTION INSTALL - GLASS AT 40" MAX AFF; SECURELY MOUNT TO WALL
<b>CASEWORK LEGEND</b> (A) BASE CABINET - SINK CABINET W/ FULL-HEIGHT DOOR(S) (B) OPEN BASE CABINET W/ ADJUSTABLE SHELF		SDW1	SOAP DISPENSER - WALL-MOUNTED MFR - BOBRICK PRODUCT - AUTOMATIC WALL-MOUNTED FOAM SOAP DISPENSER ITEM # - 9-2013 SIZE - 4-1/4"W X 9-9/16"H X 4-7/32"D INSTALL - 52" MAX TO TOP OF UNIT LOCATION - LAVATORIES AND KITCHEN HAND WASH SINKS
		TR	DECORATIVE TRASH RECEPTACLE - FREESTANDING (OFO)
		SND	SANITARY NAPKIN DISPOSAL MFR - BOBRICK PRODUCT - SURFACE-MOUNTED SANITARY NAPKIN DISPOSAL SERIES - CONTURA SERIES ITEM # - B-270 SIZE - 7-1/2"W X 10"H X 3-1/16"D INSTALL - 30" AFF TO TOP OF UNIT
		TTD	TOILET TISSUE DISPENSER MFR - BOBRICK PRODUCT - SURFACE-MOUNTED DOUBLE-ROLL VANDAL RESISTANT (LOCKABLE) TOILET TISSUE DISPENSER ITEM # - B-27460 SIZE - 14-1/8"W X 2-1/4"H X 5-1/4"D INSTALL - 20" AFF TO TOP OF UNIT
		RH	COAT HOOK MFR - DELTA PRODUCT - TRINISC ROBE HOOK ITEM # - 78935-BL FINISH - MATTE BLACK SIZE - 2-1/4"W X 3-1/8"H X 2-27/32" PROJECTION INSTALL - 48" MAX AFF TO CENTER OF HOOK AT BACK OF RESTROOM DOORS
		HDW	HAND DRYER - WALL-MOUNTED MFR - DYSON PRODUCT - AIRBLADE V ITEM # - FINISH - SIZE - 9-1/4"W X 14-3/4"H X 4" PROJECTION INSTALL - 35-1/4" AFF TO BOTTOM OF UNIT
		PTD1	PAPER TOWEL DISPENSER - WALL-MOUNTED MFR - BOBRICK PRODUCT - AUTOMATIC UNIVERSAL SURFACE-MOUNTED ROLL PAPER TOWEL DISPENSER ITEM # - B-72974 SIZE - 12-3/8"W x 15-1/4"H x 9-1/2"D INSTALL - MOUNT CENTERED OVER KITCHEN HAND WASH SINKS
		PTD2	PAPER TOWEL DISPENSER - WALL-MOUNTED MFR - BOBRICK PRODUCT - SURFACE-MOUNTED PAPER TOWEL DISPENSER ITEM # - B-26212 SIZE - 10-3/4"W x 7-1/8"H x 4"D INSTALL - BAR, RE: INTERIOR ELEVATIONS



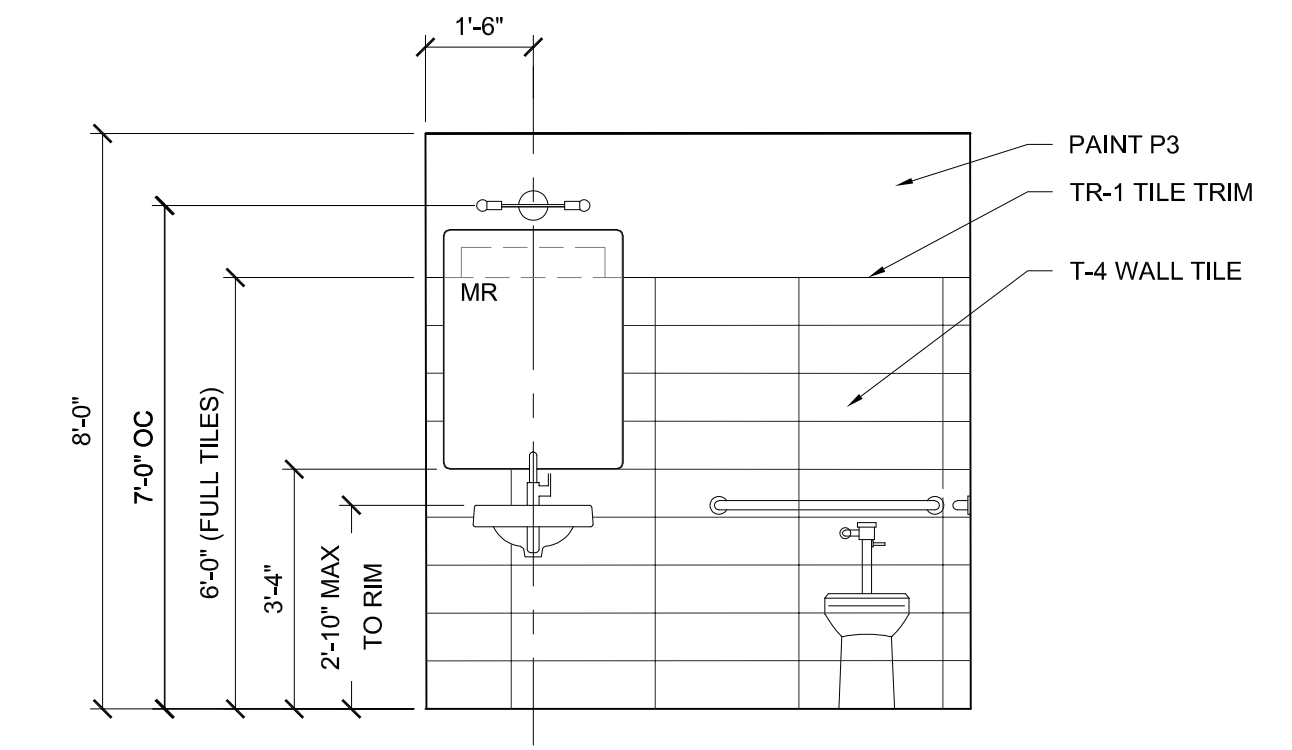
INT ELEV - LEVEL 2 WOMEN'S RR (MEN'S SIMILAR, OPPOSITE HAND) 3/8" = 1'-0"



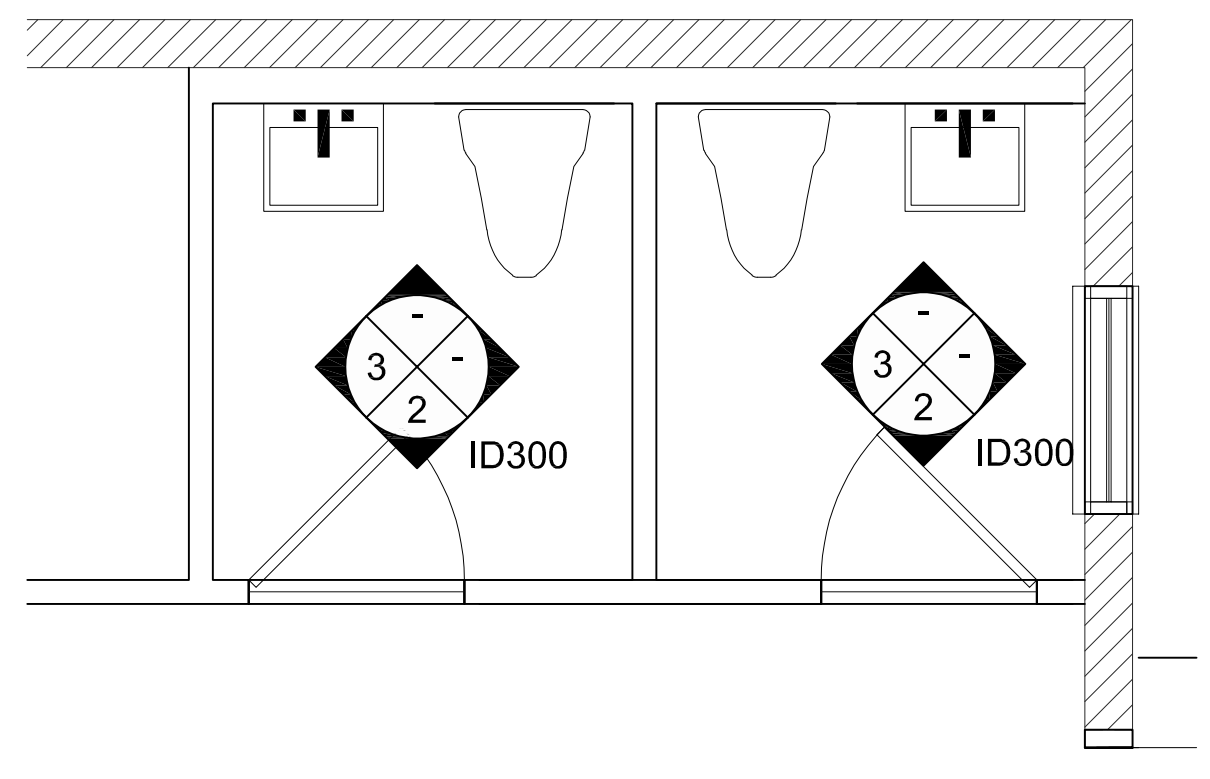
INT ELEV - LEVEL 2 WOMEN'S RR (MEN'S SIMILAR, OPPOSITE HAND) 3/8" = 1'-0"



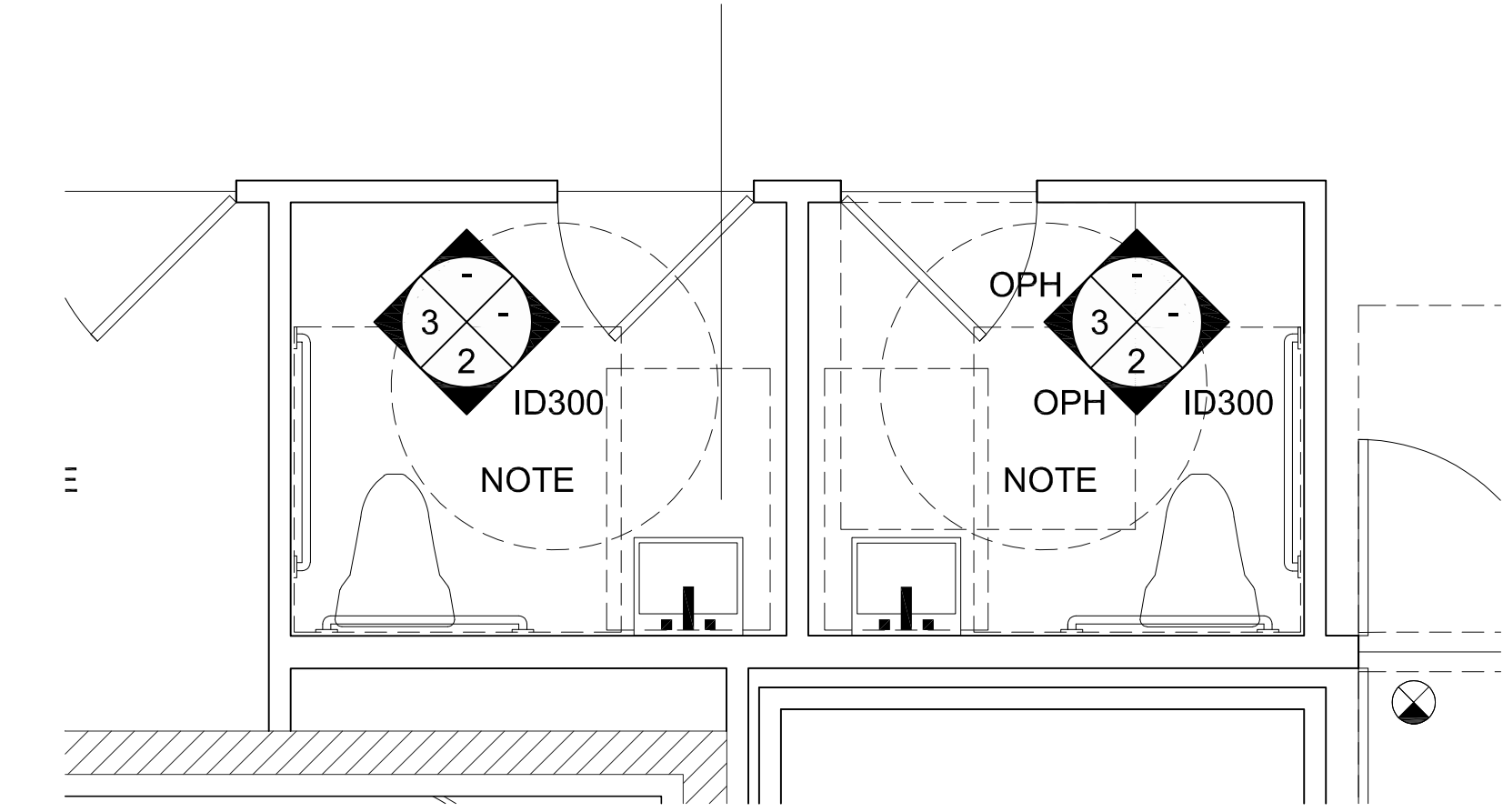
3 INT ELEV - WOMEN'S RR (MEN'S SIMILAR, OPPOSITE HAND) 3/8" = 1'-0"



2 INT ELEV - WOMEN'S RR (MEN'S SIMILAR, OPPOSITE HAND) 3/8" = 1'-0"



ENLARGED PLAN- LEVEL 2 RESTROOMS 3/8" = 1'-0"



1 ENLARGED PLAN-LEVEL 1 RESTROOMS 3/8" = 1'-0"

ISSUES and Revisions		Date	By	Description
01	1/22/22	CMB		PRICING SET
02				
03				
04				
05				
06				
07				
08				
09				
10				



Project Number: 22.3024.00  
 Drawn By: WJ  
 Checked By:  
 Project Name:  
 SOUTHERN GROUNDS & CO  
 556 CENTRAL AVE  
 ST. PETERSBURG, FL  
 Drawing Name:  
 INTERIOR ELEVATIONS  
 RESTROOMS

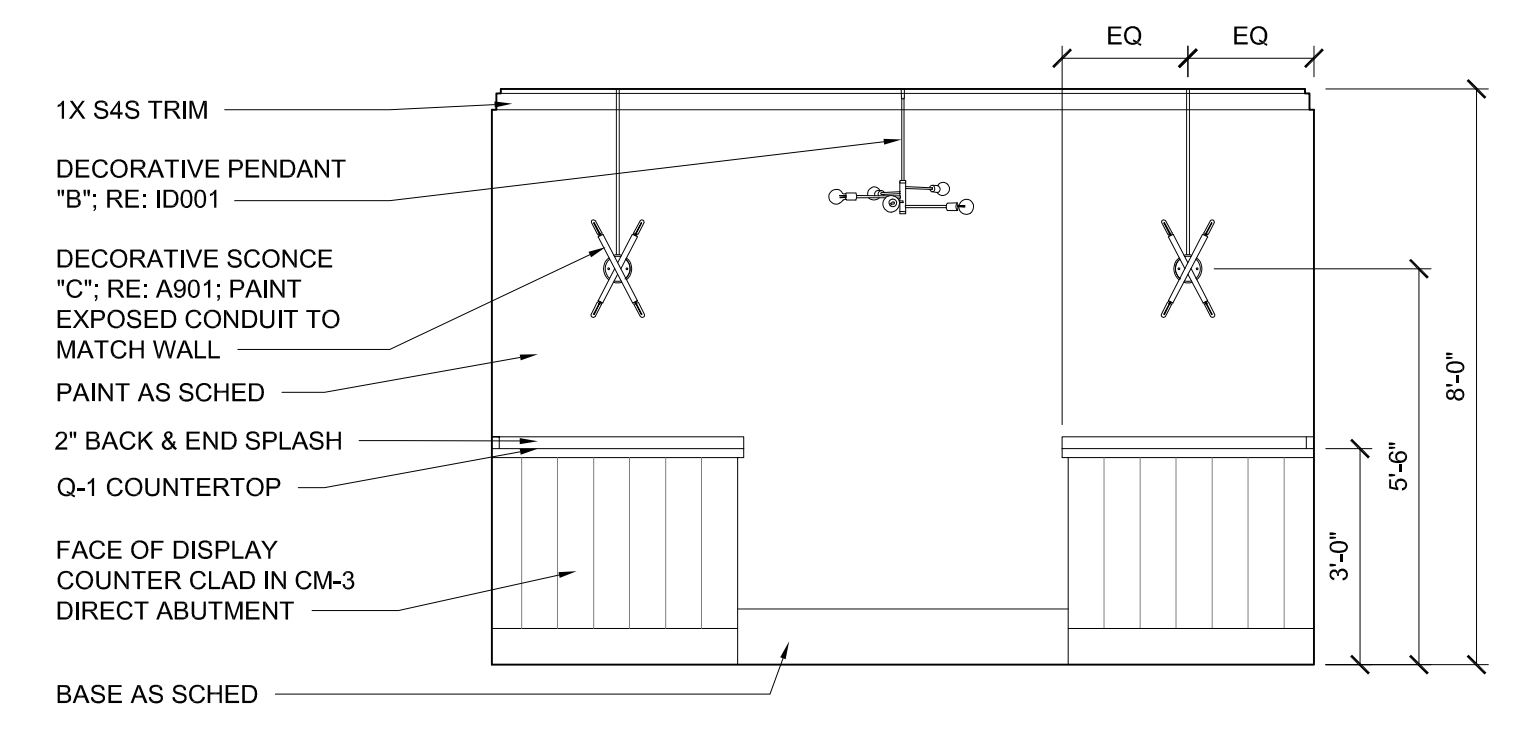
**GENERAL NOTES**

- REFER TO SHEETS ID080 FOR FURTHER SPECIFICATION INFORMATION.
- REFER TO SHEET ID001 FOR CASEWORK GENERAL NOTES
- CONTRACTOR TO PROVIDE BLOCKING AS REQUIRED FOR ALL WALL MOUNTED EQUIPMENT, SIGNAGE AND ACCESSORIES.

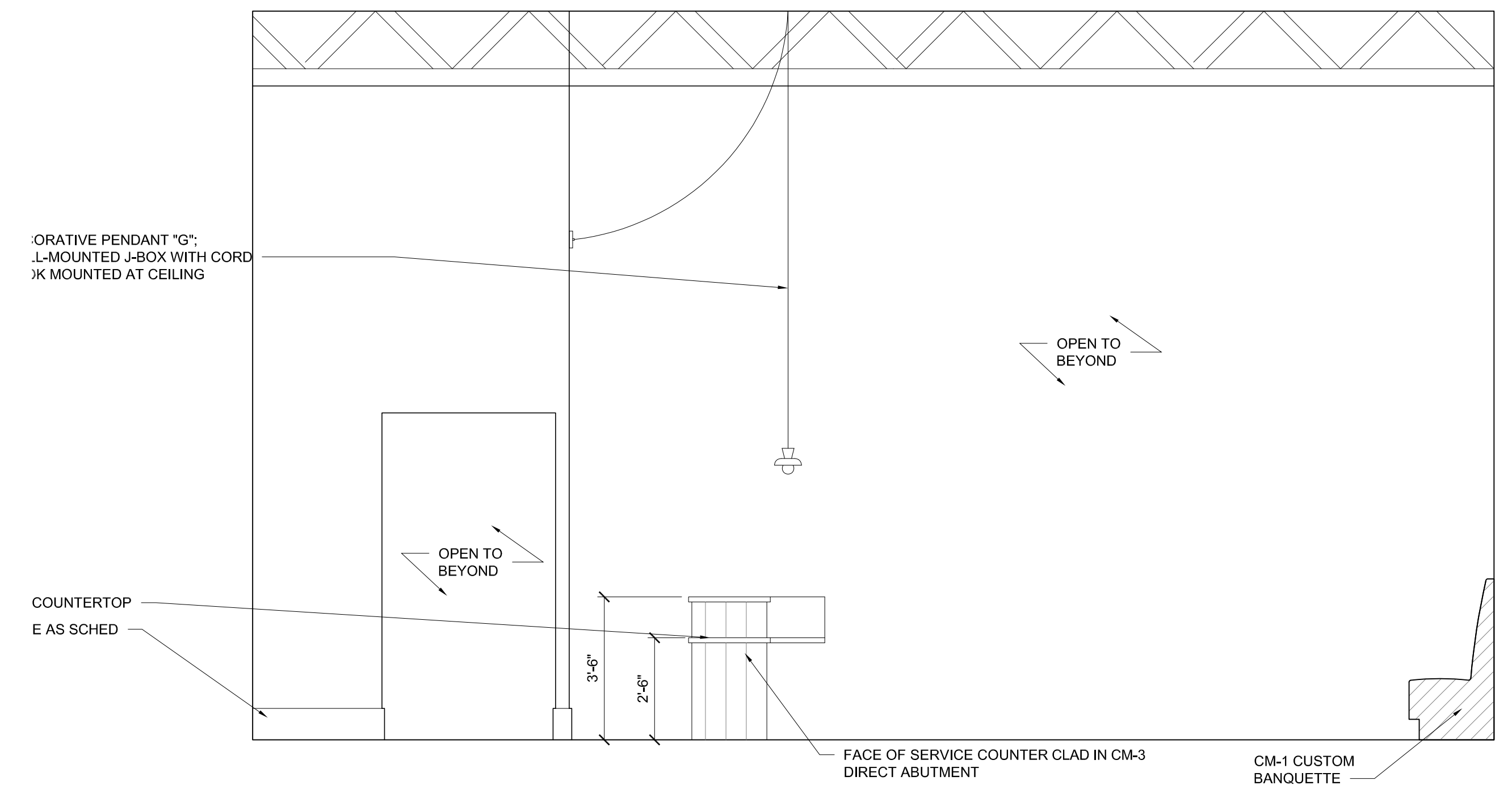
---

**CASEWORK LEGEND**

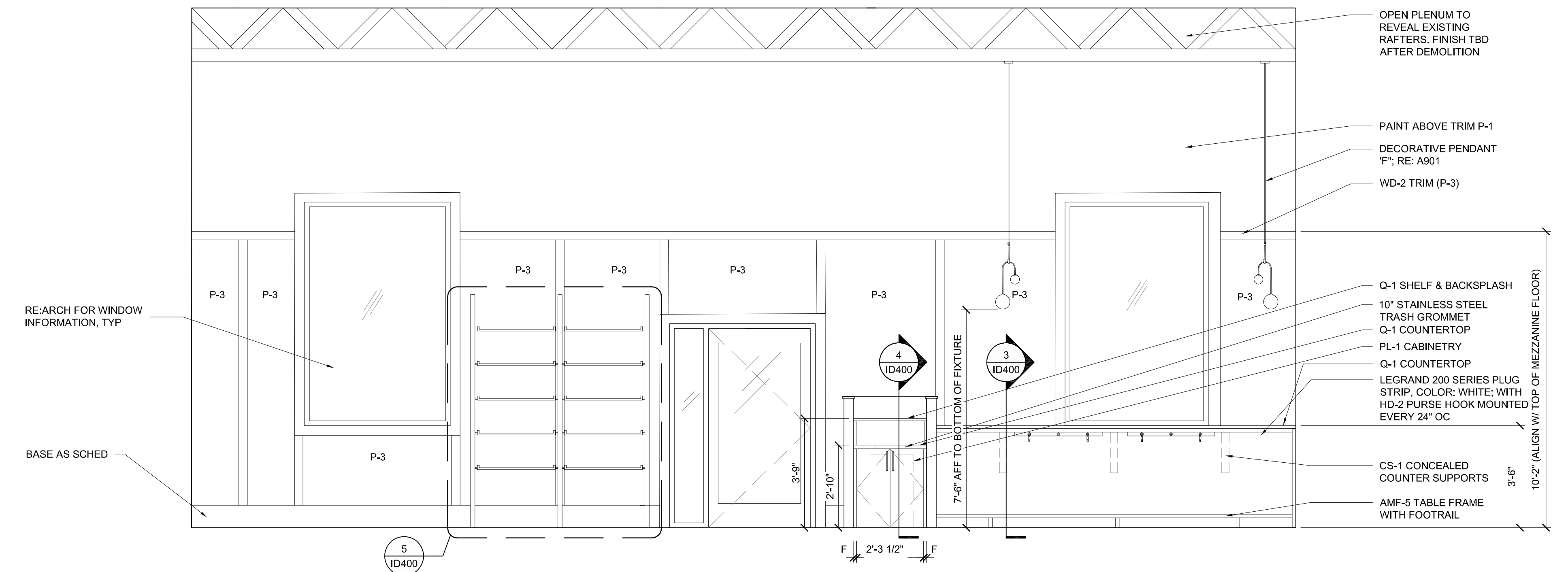
- (A) BASE CABINET - SINK CABINET W/ FULL-HEIGHT DOOR(S)
- (B) OPEN BASE CABINET W/ ADJUSTABLE SHELF



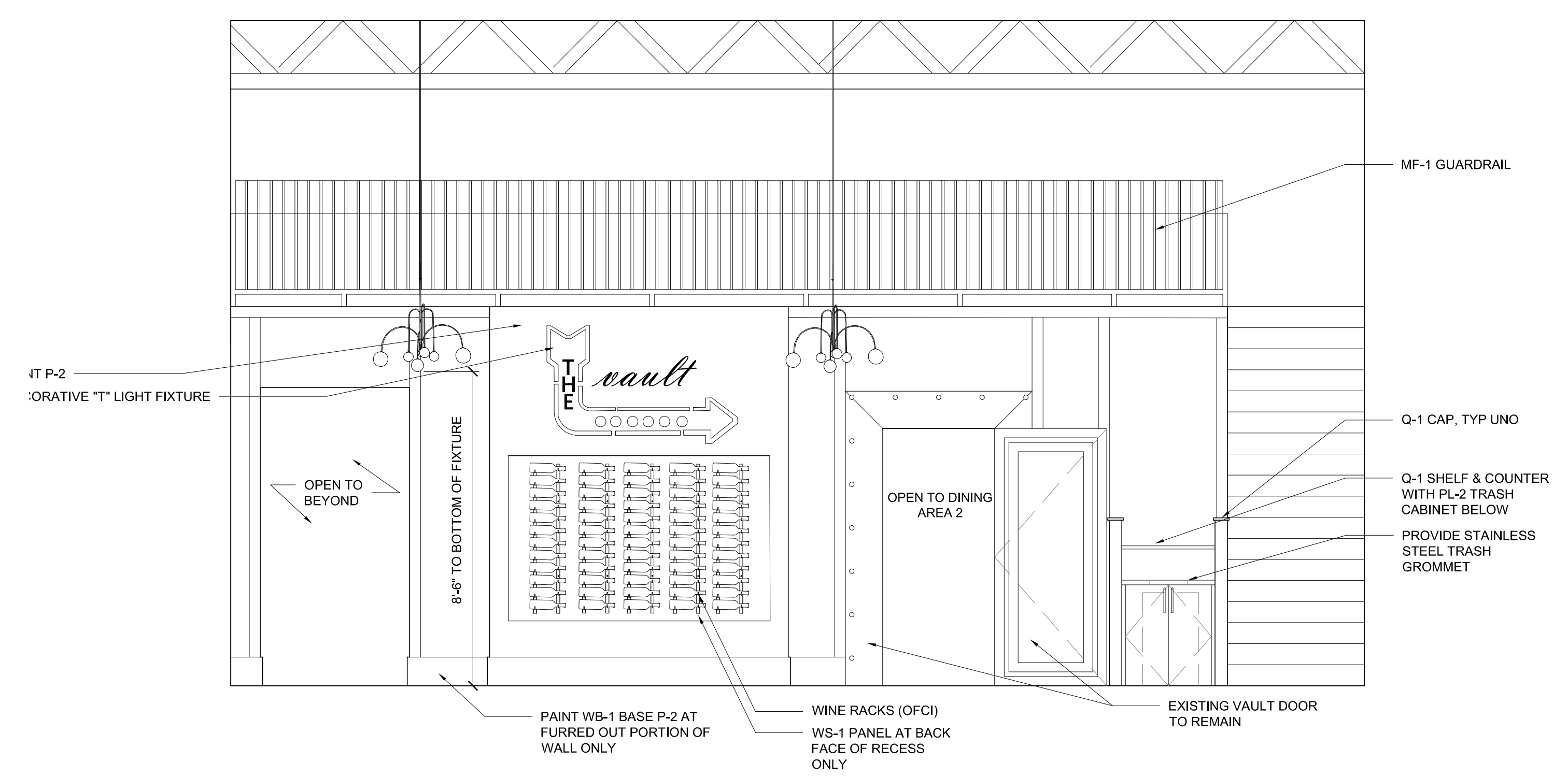
**5 ELEVATION - VAULT INTERIOR** 1/2" = 1'-0"



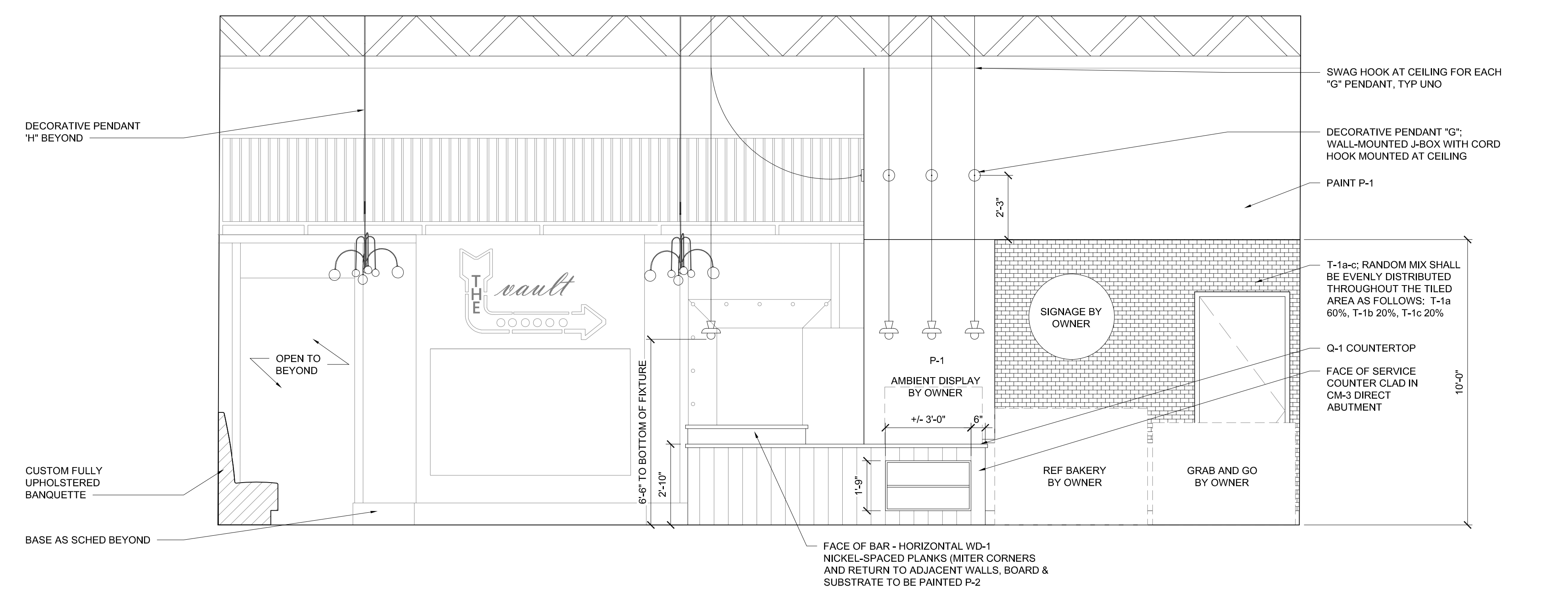
**4 ELEVATION - SOUTH WALL / VAULT** 3/8" = 1'-0"



**2 ELEVATION - NORTH WALL / RETAIL DISPLAY** 3/8" = 1'-0"



**3 ELEVATION - SOUTH WALL / VAULT** 3/8" = 1'-0"



**1 ELEVATION - SOUTH WALL / POINT OF SALE** 3/8" = 1'-0"

Rev.	Date	By	Description
01	1/22/22	CMB	PRICING SET
02			
03			
04			
05			
06			
07			
08			
09			
10			
11			
12			
13			
14			
15			
16			
17			
18			

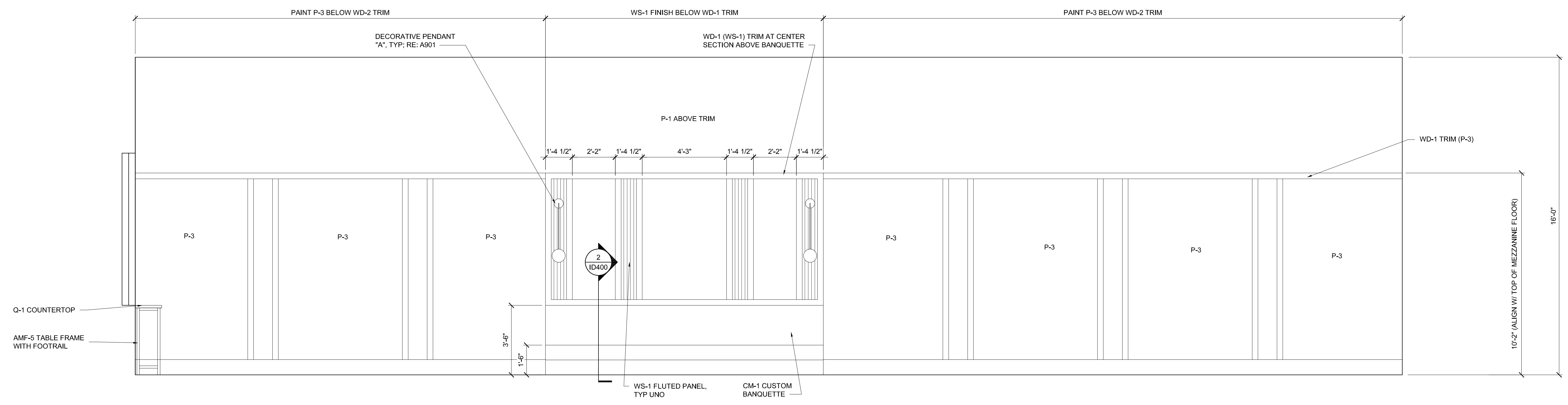


Project Number:	22.3024.00
Drawn By:	WJ
Checked By:	
Project Name:	SOUTHERN GROUNDS & CO
	556 CENTRAL AVE
	ST. PETERSBURG, FL
Drawing Name:	INTERIOR ELEVATIONS

GENERAL NOTES	
1.	REFER TO SHEETS ID080 FOR FURTHER SPECIFICATION INFORMATION.
2.	REFER TO SHEET ID001 FOR CASEWORK GENERAL NOTES
3.	CONTRACTOR TO PROVIDE BLOCKING AS REQUIRED FOR ALL WALL MOUNTED EQUIPMENT, SIGNAGE AND ACCESSORIES.

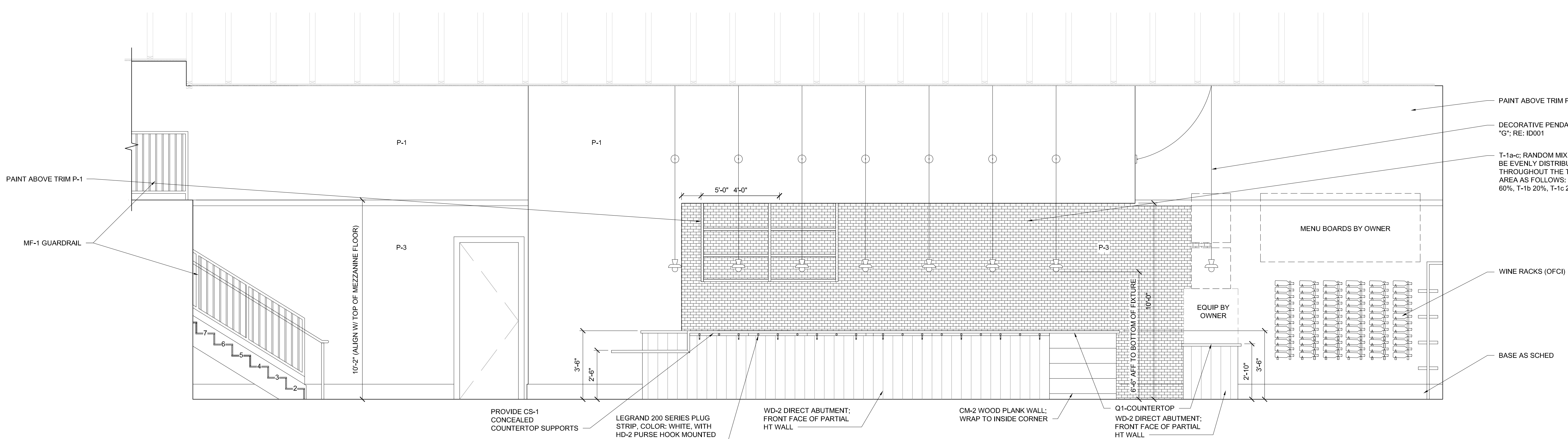
  

CASEWORK LEGEND	
(A)	BASE CABINET - SINK CABINET W/ FULL-HEIGHT DOOR(S)
(B)	OPEN BASE CABINET W/ ADJUSTABLE SHELF



2 ELEVATION - EAST WALL / DINING ROOM

3/8" = 1'-0"



1 ELEVATION - WEST WALL / COFFEE BAR

3/8" = 1'-0"

ISSUES AND REVISIONS			
No.	Date	By	Description
01	1/22/22	CMB	PRICING SET
02			
03			
04			
05			
06			
07			
08			
09			



Project Number:	22.3024.00
Drawn By:	WJ
Checked By:	
Project Name:	SOUTHERN GROUNDS & CO
	556 CENTRAL AVE
	ST. PETERSBURG, FL
Drawing Name:	INTERIOR ELEVATIONS

Not Valid for Permitted Work Without Case Approvals, Seal and Date.

**GENERAL NOTES**

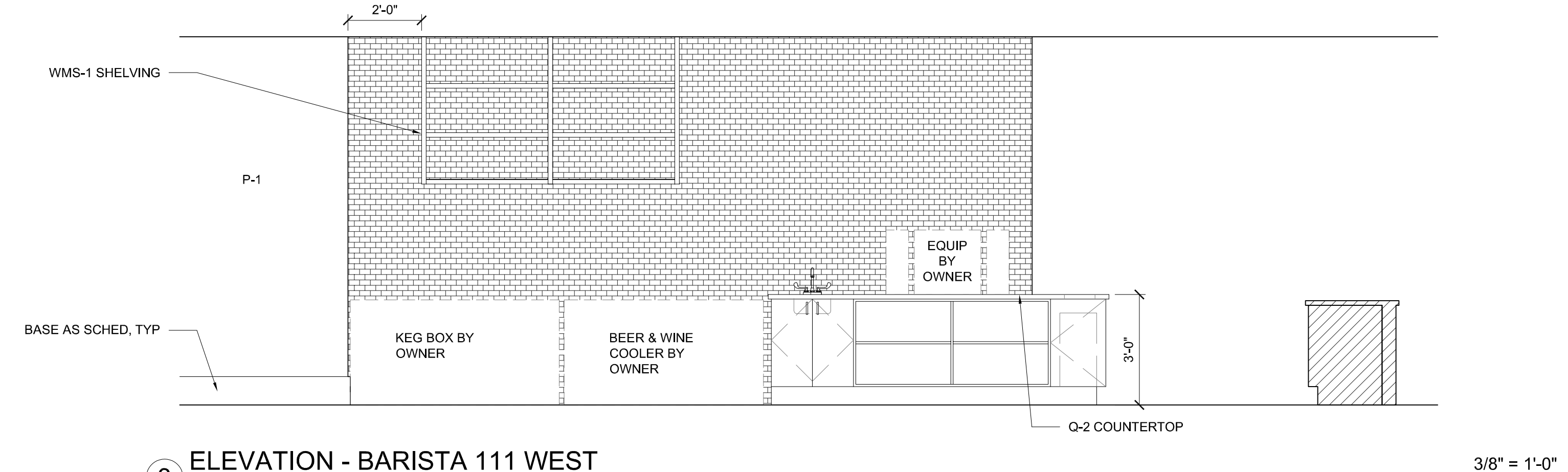
- REFER TO SHEETS ID080 FOR FURTHER SPECIFICATION INFORMATION.
- REFER TO SHEET ID001 FOR CASEWORK GENERAL NOTES
- CONTRACTOR TO PROVIDE BLOCKING AS REQUIRED FOR ALL WALL MOUNTED EQUIPMENT, SIGNAGE AND ACCESSORIES.

**CASEWORK LEGEND**

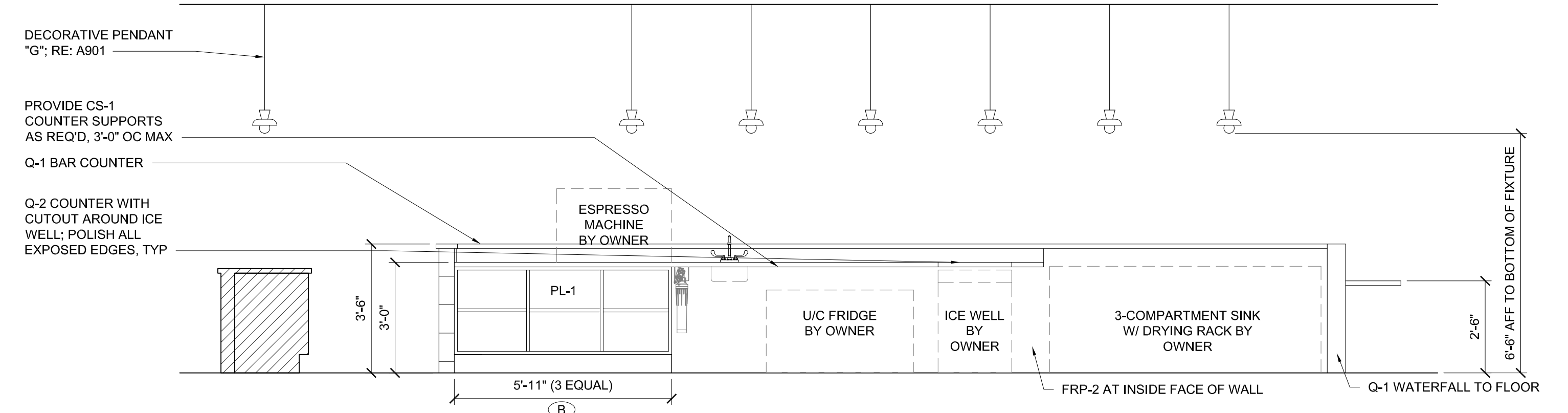
- (A) BASE CABINET - SINK CABINET W/ FULL-HEIGHT DOOR(S)
- (B) OPEN BASE CABINET W/ ADJUSTABLE SHELF

**ISSUES and Revisions**

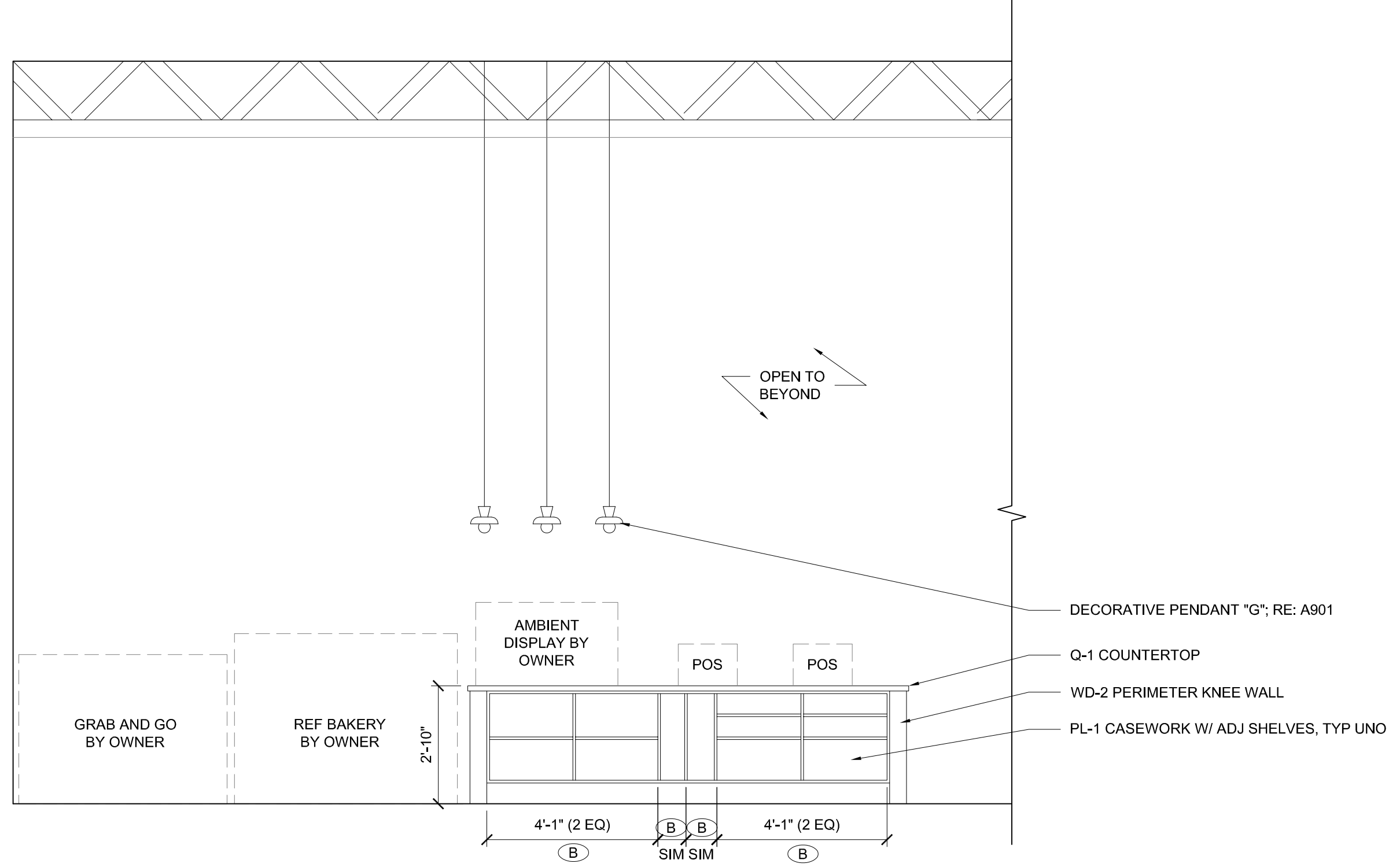
No.	Date	By	Description
01	1/22/22	CM08	PRICING SET
02			
03			
04			
05			
06			
07			
08			
09			



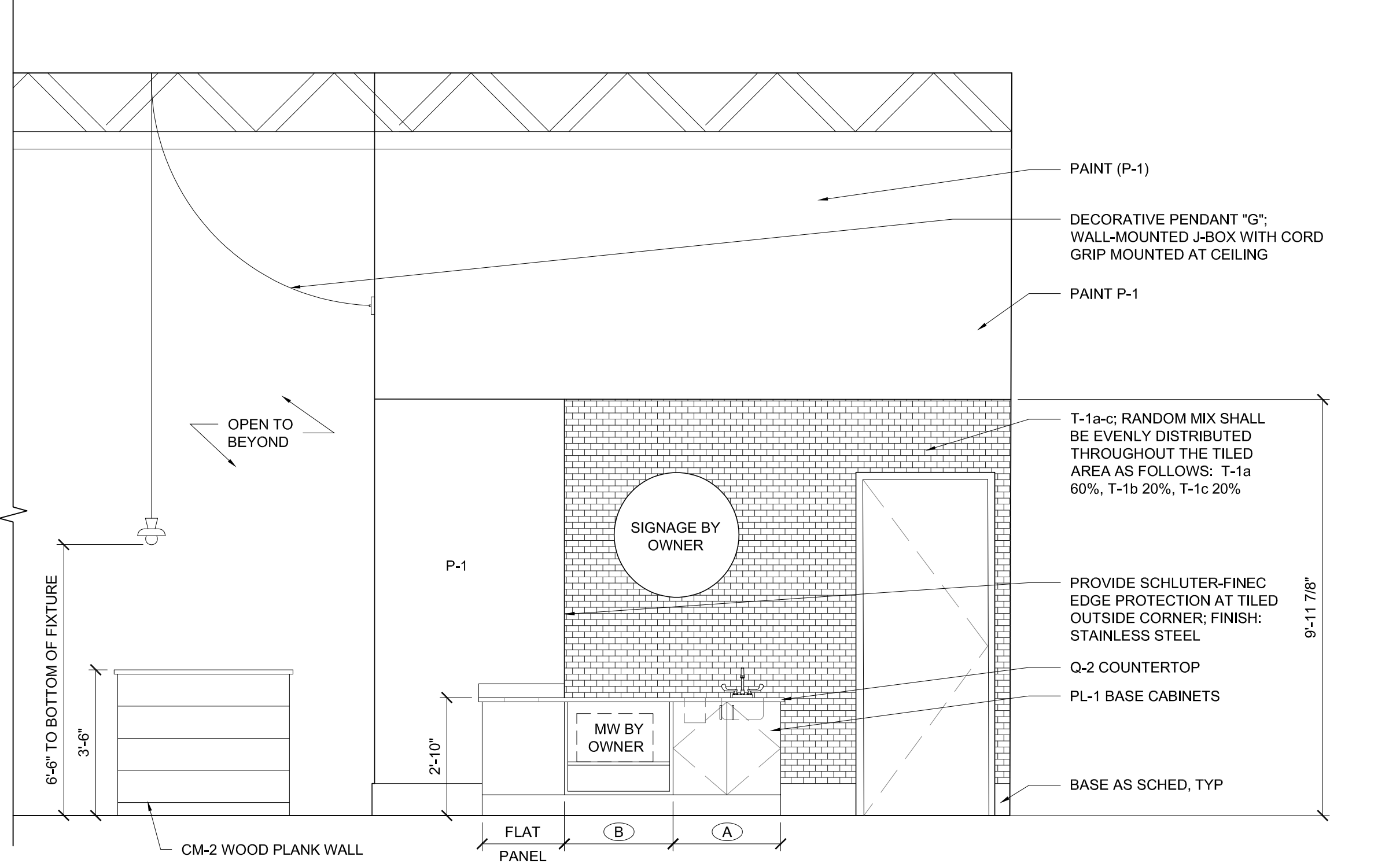
**3 ELEVATION - BARISTA 111 WEST** 3/8" = 1'-0"



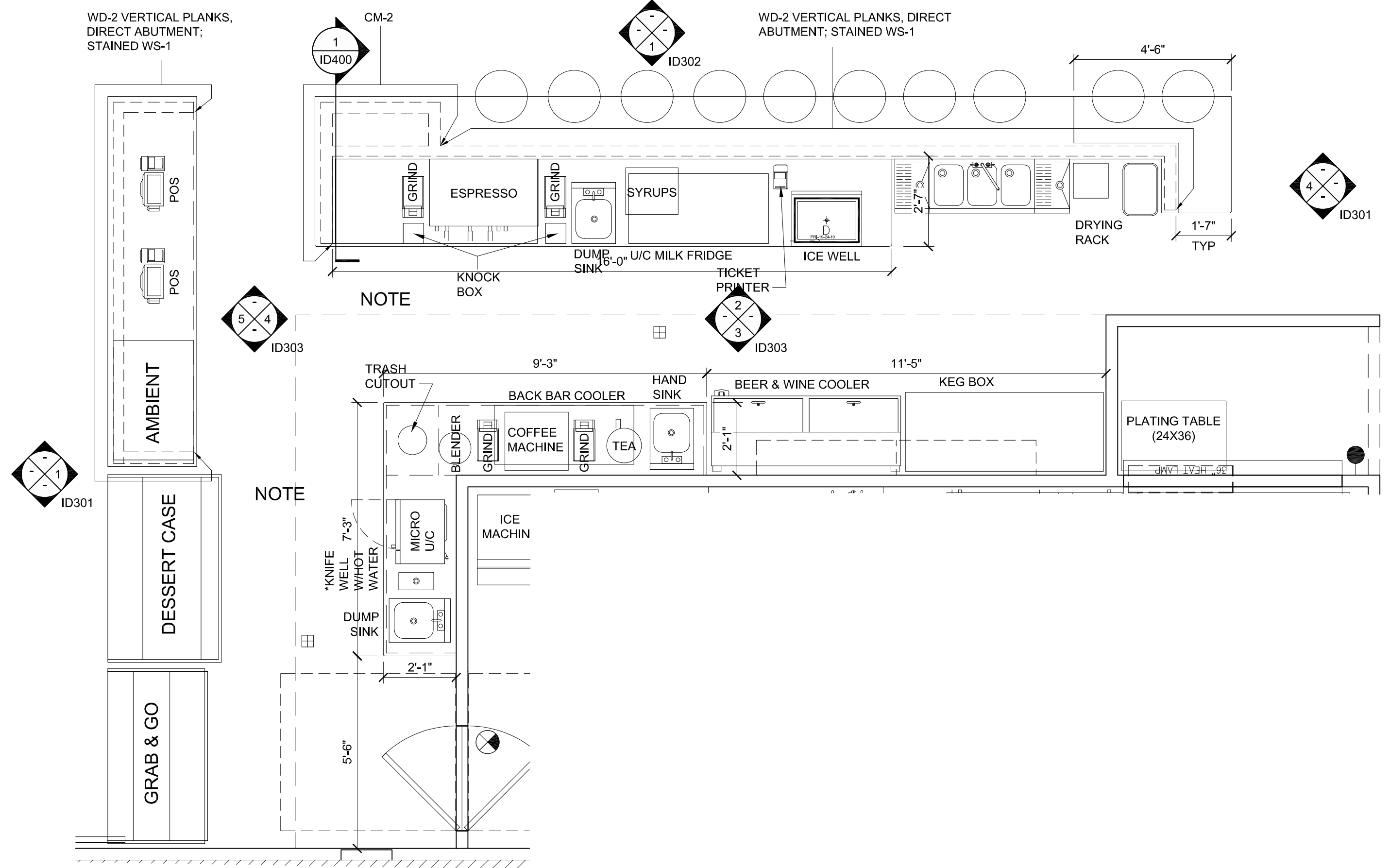
**2 ELEVATION - BARISTA 111 EAST** 3/8" = 1'-0"



**4 ELEVATION - BARISTA 111 EAST** 3/8" = 1'-0"



**3 ELEVATION - BARISTA 111 NORTH** 3/8" = 1'-0"



**1 ENLG PLAN AT BARISTA 111** 3/8" = 1'-0"



Project Number: 22.3024.00  
Drawn By:  
Checked By:  
Project Name:  
SOUTHERN GROUNDS & CO  
556 CENTRAL AVE  
ST. PETERSBURG, FL  
Drawing Name:  
INTERIOR ELEVATIONS

©2022 Group 4 Design, Inc. All rights reserved. No part of this document may be reproduced, stored in a retrieval system, or transmitted in any form or by any means, electronic, mechanical, photocopying, recording, or by any information storage and retrieval system, without the prior written permission and consent of Group 4 Design, Inc.

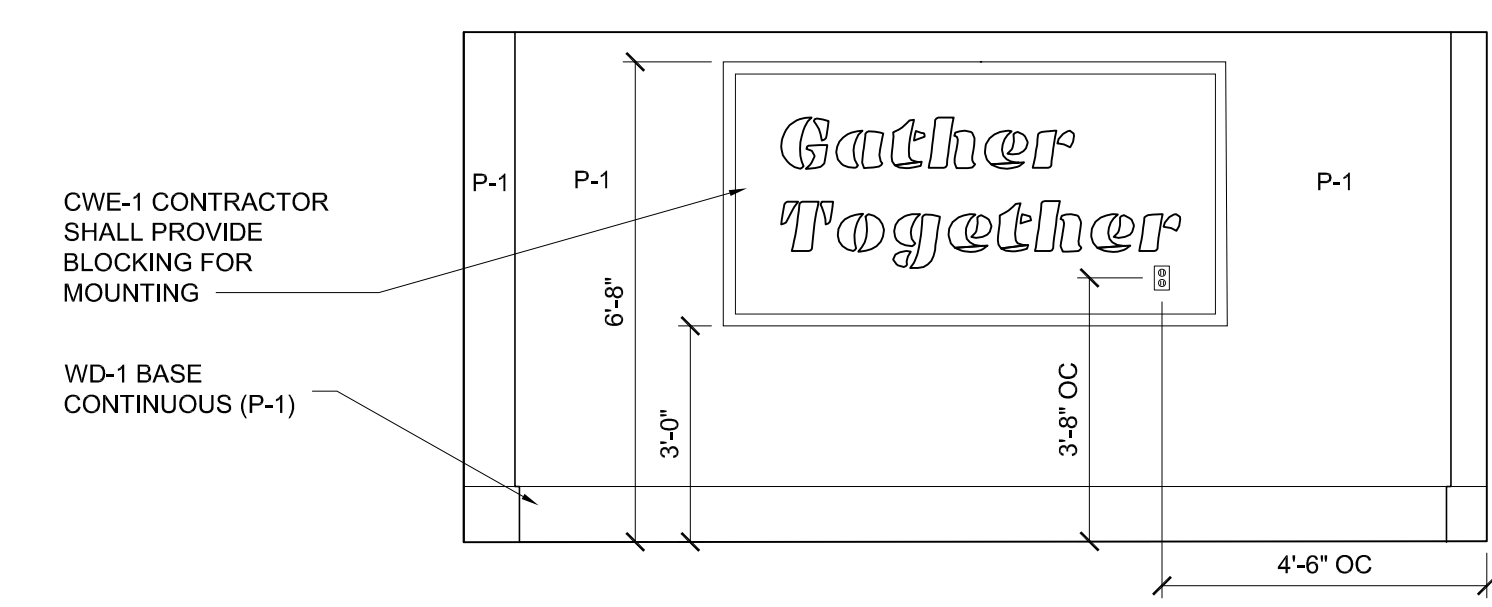
Not Valid for Permitting  
Without Cap Approvals  
Seal and Date

GENERAL NOTES	
1.	REFER TO SHEETS ID080 FOR FURTHER SPECIFICATION INFORMATION.
2.	REFER TO SHEET ID001 FOR CASEWORK GENERAL NOTES
3.	CONTRACTOR TO PROVIDE BLOCKING AS REQUIRED FOR ALL WALL MOUNTED EQUIPMENT, SIGNAGE AND ACCESSORIES.

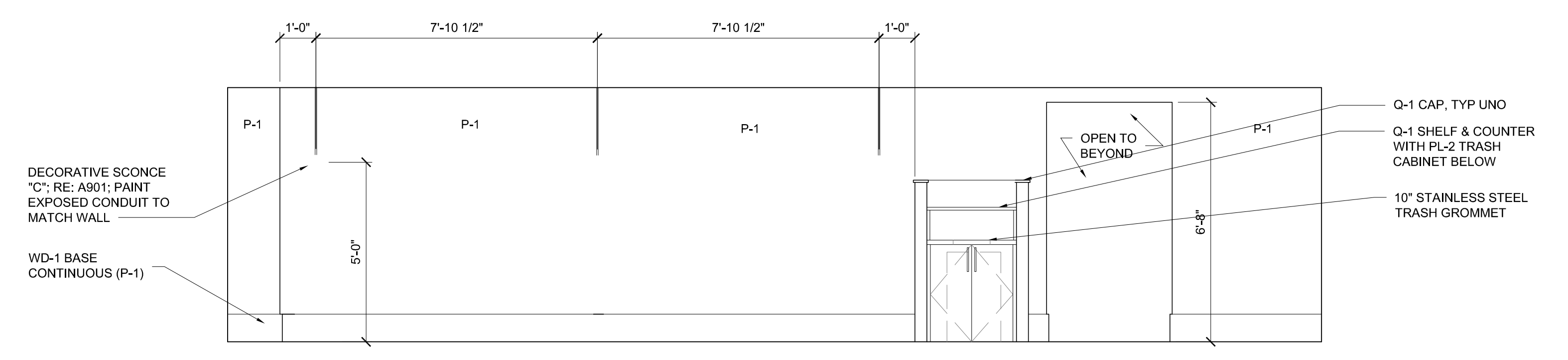
  

CASEWORK LEGEND	
(A)	BASE CABINET - SINK CABINET W/ FULL-HEIGHT DOOR(S)
(B)	OPEN BASE CABINET W/ ADJUSTABLE SHELF

Issues and Revisions			
No.	Date	By	Description
01	1/21/22	CMB	PRICING SET
02			
03			
04			
05			
06			
07			
08			



**2** ELEVATION - UPPER COFFEE BAR 202 EAST 3/8" = 1'-0"



**1** ELEVATION - UPPER COFFEE BAR 202 NORTH 3/8" = 1'-0"



Project Number:	22.3024.00
Drawn By:	
Checked By:	
Project Name:	SOUTHERN GROUNDS & CO
	556 CENTRAL AVE
	ST. PETERSBURG, FL
Drawing Name:	INTERIOR ELEVATIONS

©2022 Group 4 Design, Inc. All rights reserved. This drawing is the property of Group 4 Design, Inc. and is not to be reproduced, altered, copied, or used in any way without the express written permission and consent of Group 4 Design, Inc.

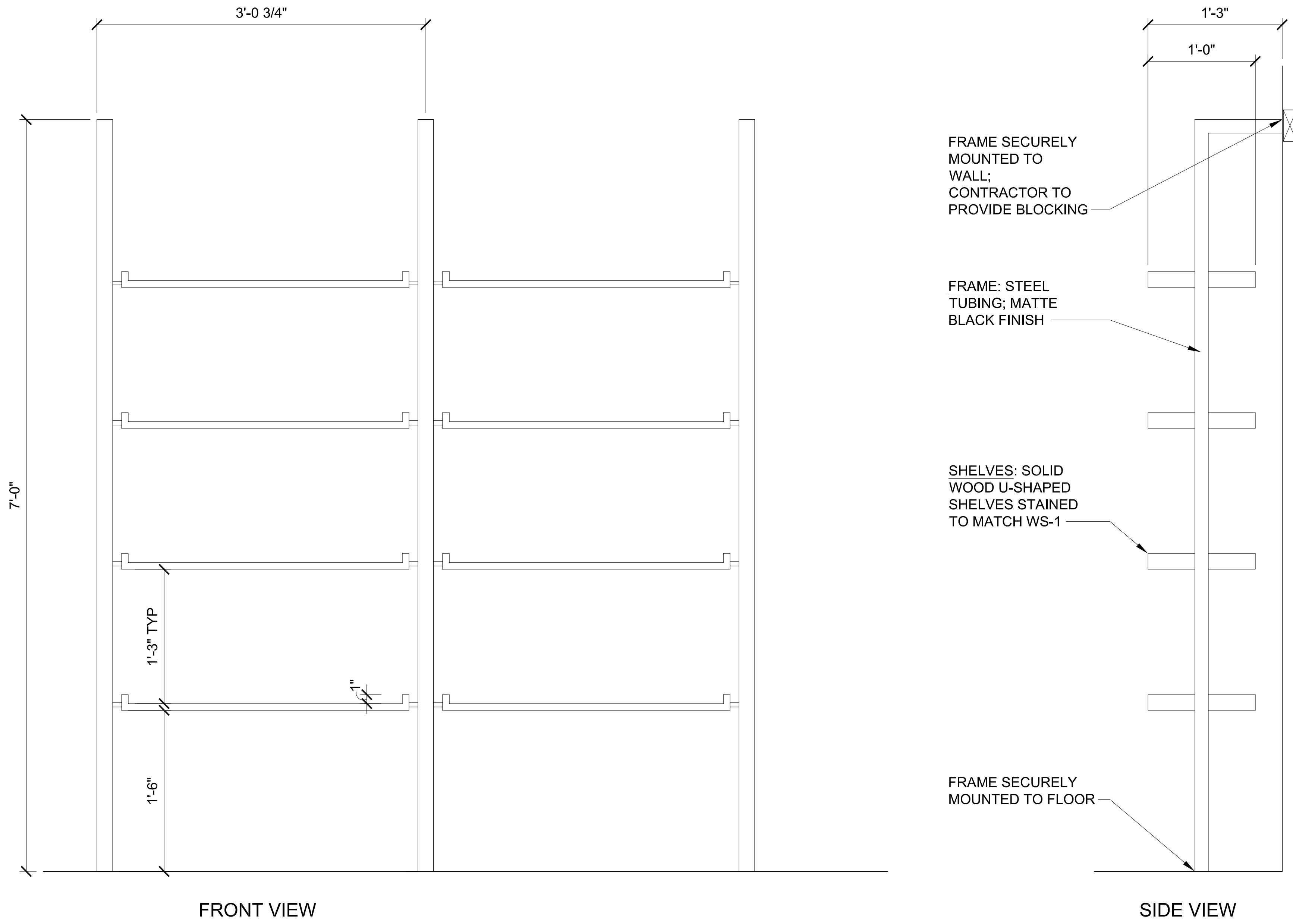


**GENERAL NOTES**

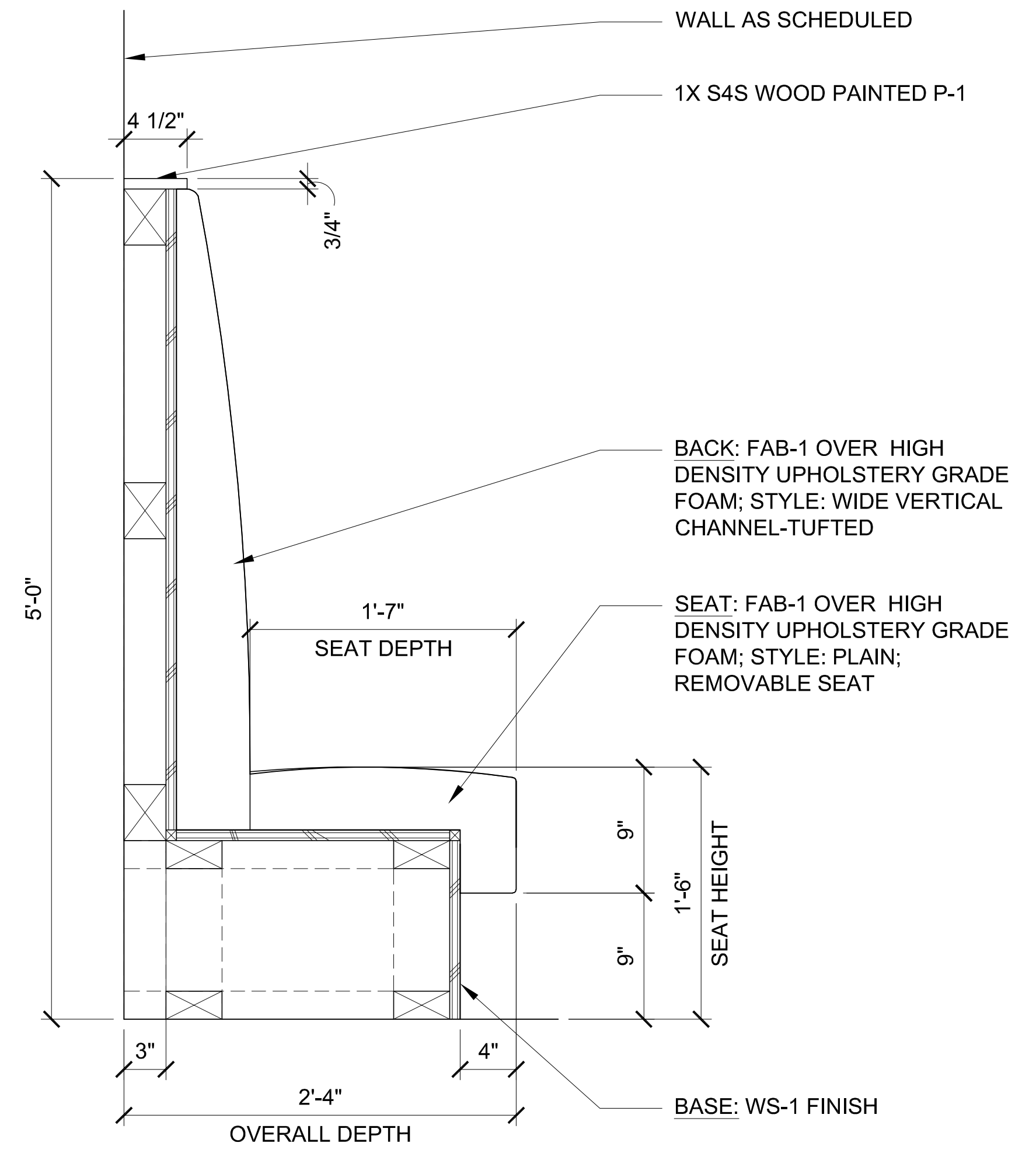
- REFER TO SHEETS ID080 FOR FURTHER SPECIFICATION INFORMATION.
- REFER TO SHEET ID001 FOR CASEWORK GENERAL NOTES
- CONTRACTOR TO PROVIDE BLOCKING AS REQUIRED FOR ALL WALL MOUNTED EQUIPMENT, SIGNAGE AND ACCESSORIES.

**CASEWORK LEGEND**

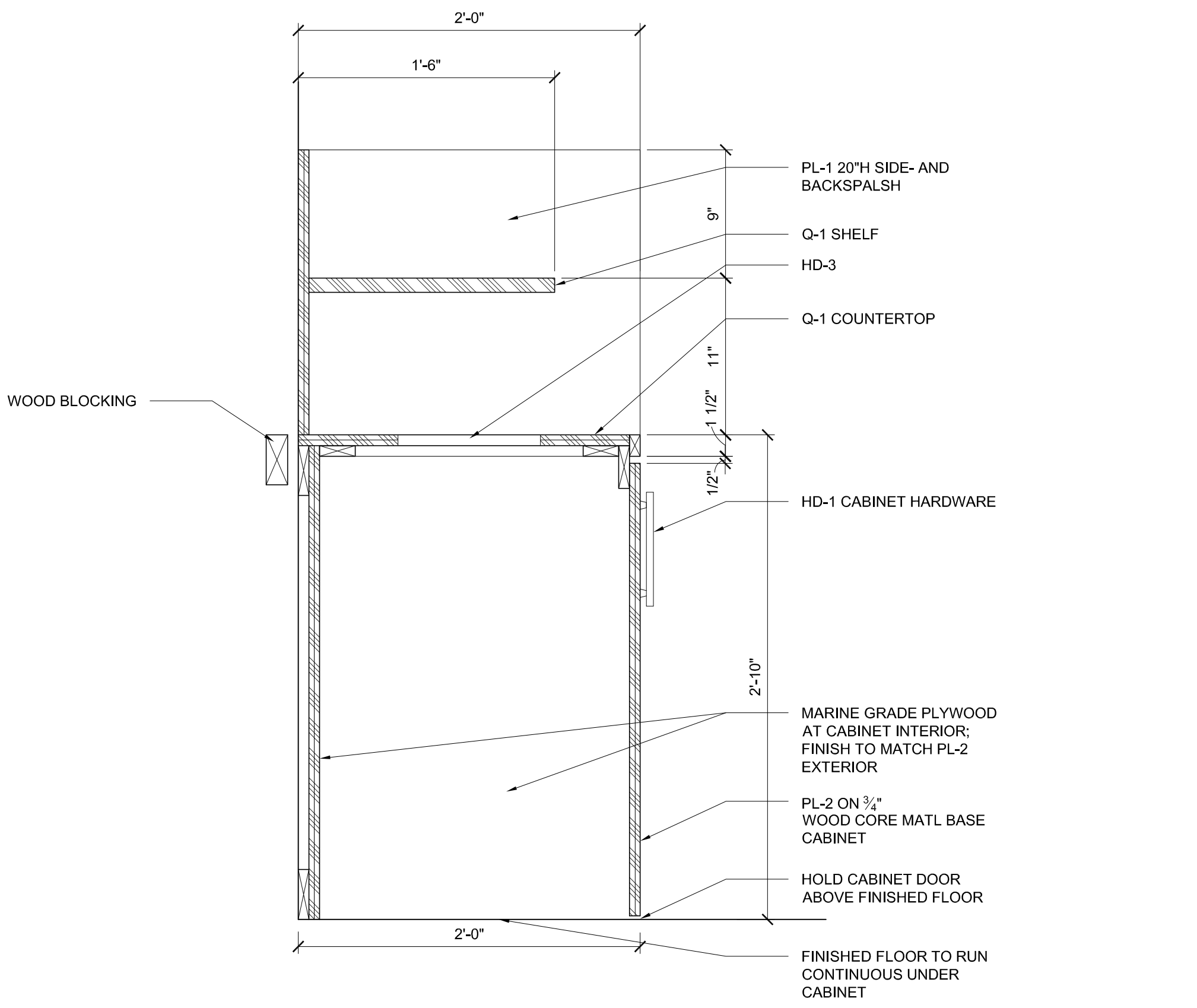
- (A) BASE CABINET - SINK CABINET W/ FULL HEIGHT DOOR(S)
- (B) OPEN BASE CABINET W/ ADJUSTABLE SHELF



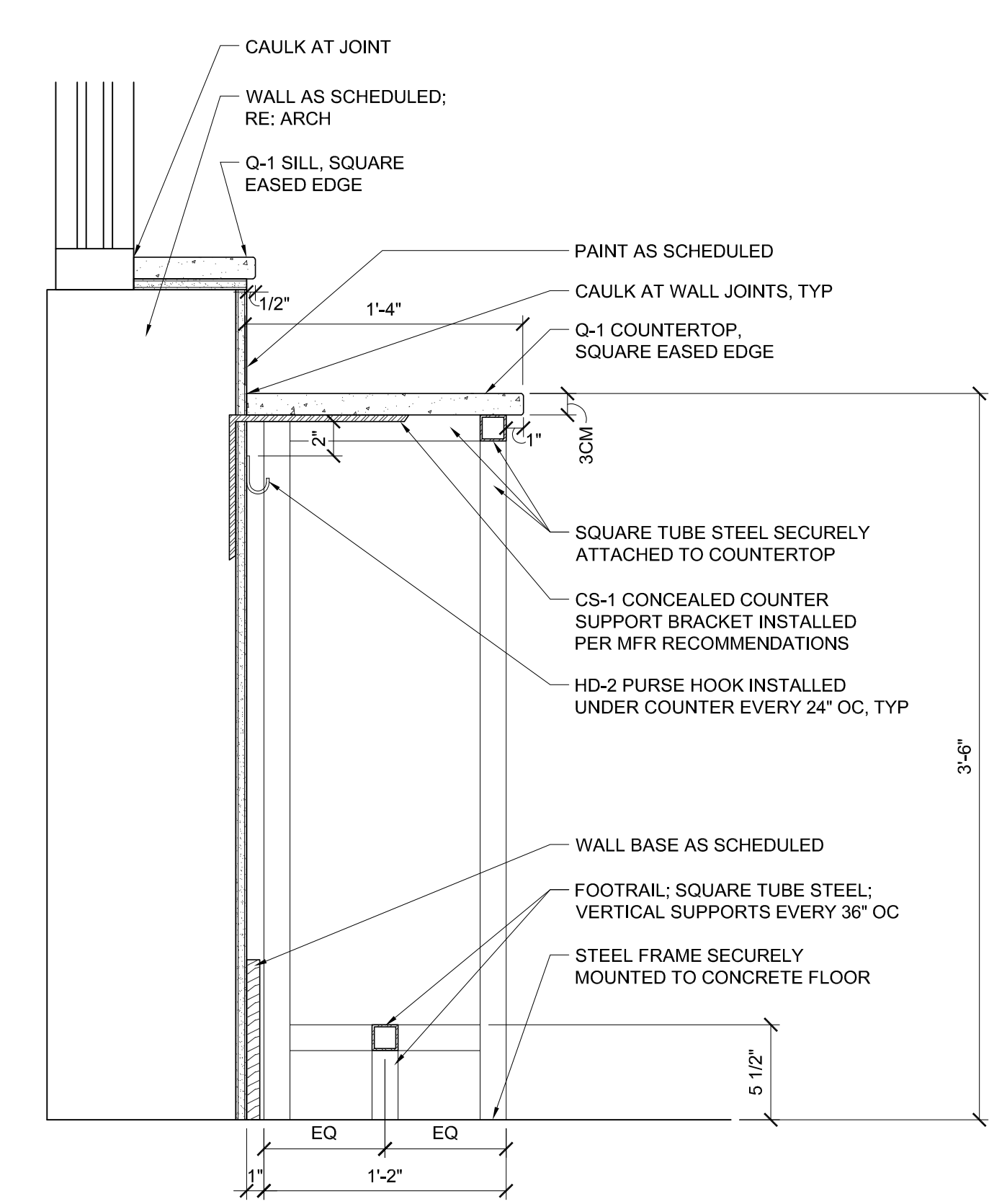
5 ENLG ELEV AT MF-3 SHELVES 1-1/2" = 1'-0"



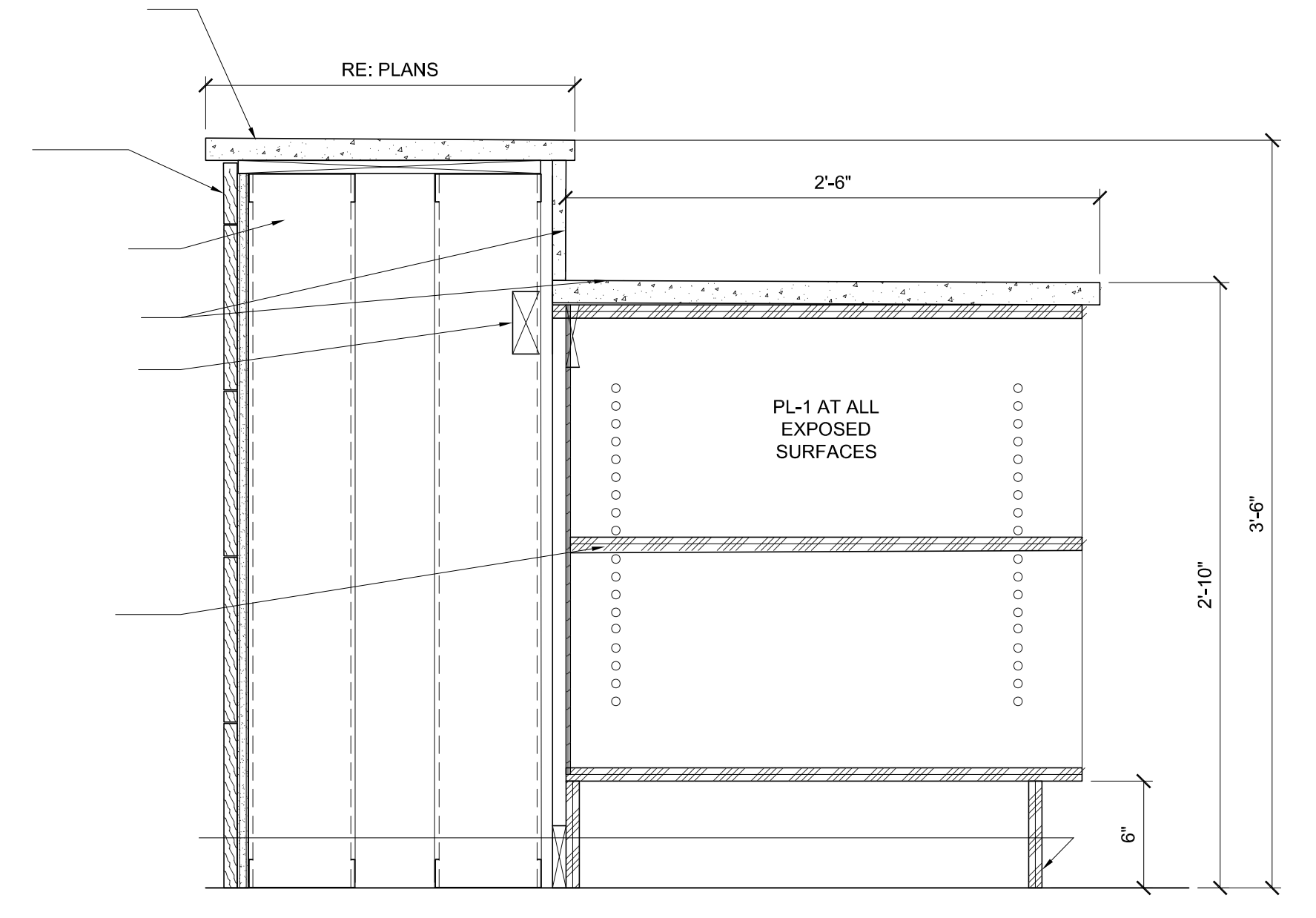
2 SECT AT BANQUETTE 1-1/2" = 1'-0"



4 SECTION DTL - DINING 1-1/2" = 1'-0"



3 SECT AT BAR COUNTER W/MF-5 TABLE BASE 1-1/2" = 1'-0"



1 SECTION AT PICK-UP COUNTER 1-1/2" = 1'-0"

**ISSUES and Revisions**

No.	Date	By	Description
01	1/22/22	CMB	PRICING SET
02			
03			
04			
05			
06			
07			
08			
09			
10			
11			
12			
13			
14			
15			
16			
17			
18			



Project Number: 22.3024.00  
Drawn By: WJ  
Checked By:  
Project Name:  
SOUTHERN GROUNDS & CO  
556 CENTRAL AVE  
ST. PETERSBURG, FL  
Drawing Name:  
INTERIOR DETAILS