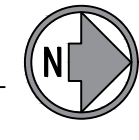


1 POWER FLOOR PLAN

SCALE: 3/16" = 1'-0"



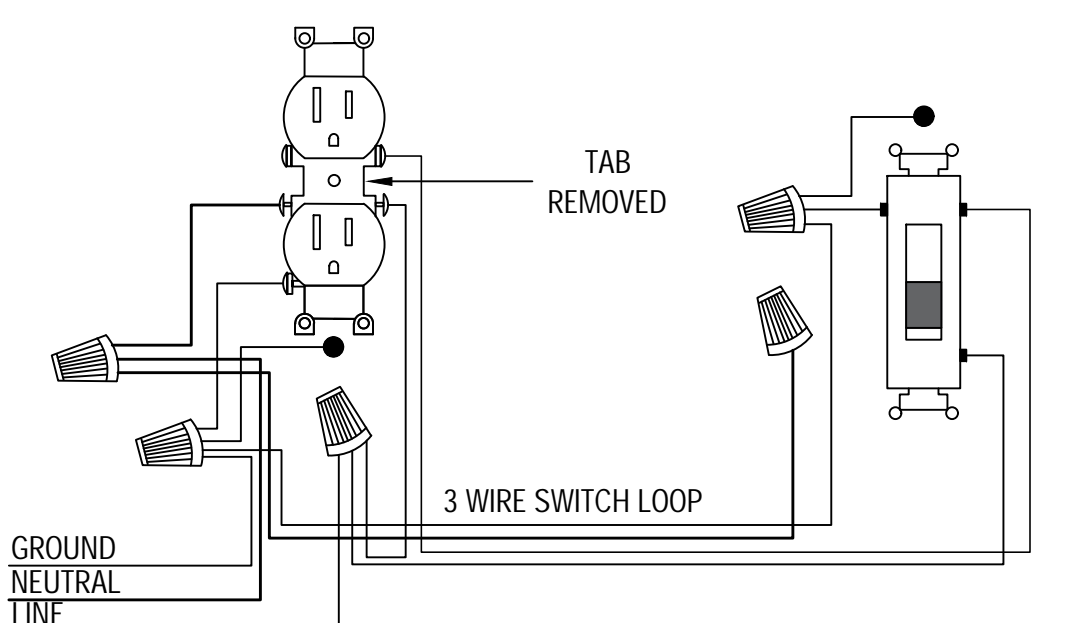
NOTES:

1. SECOND FLOOR NOT IN SCOPE OF WORK. PANELS AND CIRCUITS TO REMAIN THE SAME.
2. FIELD VERIFY ALL ELECTRICAL EQUIPMENT IS PROPERLY LABELED. IF NOT LABELED, PROPERLY LABEL EQUIPMENT ACCORDINGLY.
3. COORDINATE ALL ROOF PENETRATIONS WITH GENERAL CONTRACTOR
4. EXISTING HANDLERS AND CONDENSING UNITS TO REMAIN. VERIFY ALL ELECTRICAL IS IN GOOD WORKING CONDITION AND CIRCUIT INDICATED CORRECTLY IN PANEL SCHEDULE.
5. CONDENSOR FOR AHU-3 ON ROOF. SEE PANEL SCHEDULE INSTALL 2P 50A 3R DISCONNECT

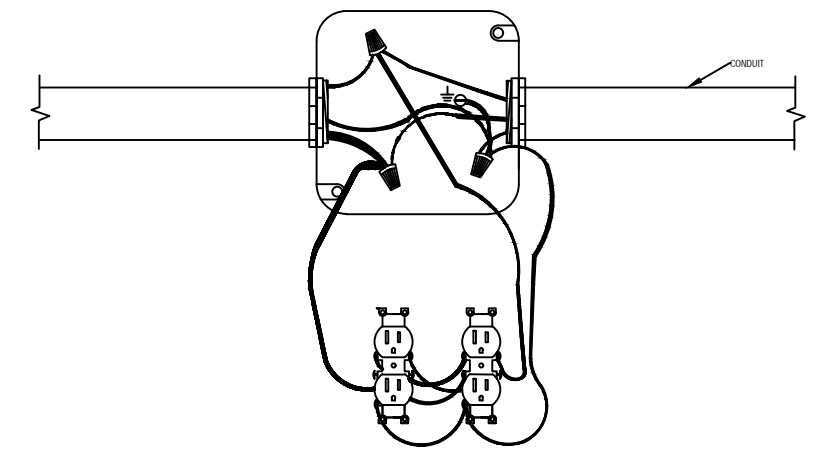
SCOPE OF WORK	
DISCIPLINE	1
	2920 NW
ELECTRICAL	FIRST FLOOR REMODEL. NO WORK TO BE DONE ON SECOND FLOOR.
REFER TO E-00 FOR ELECTRICAL GENERAL NOTES	

NOTES:

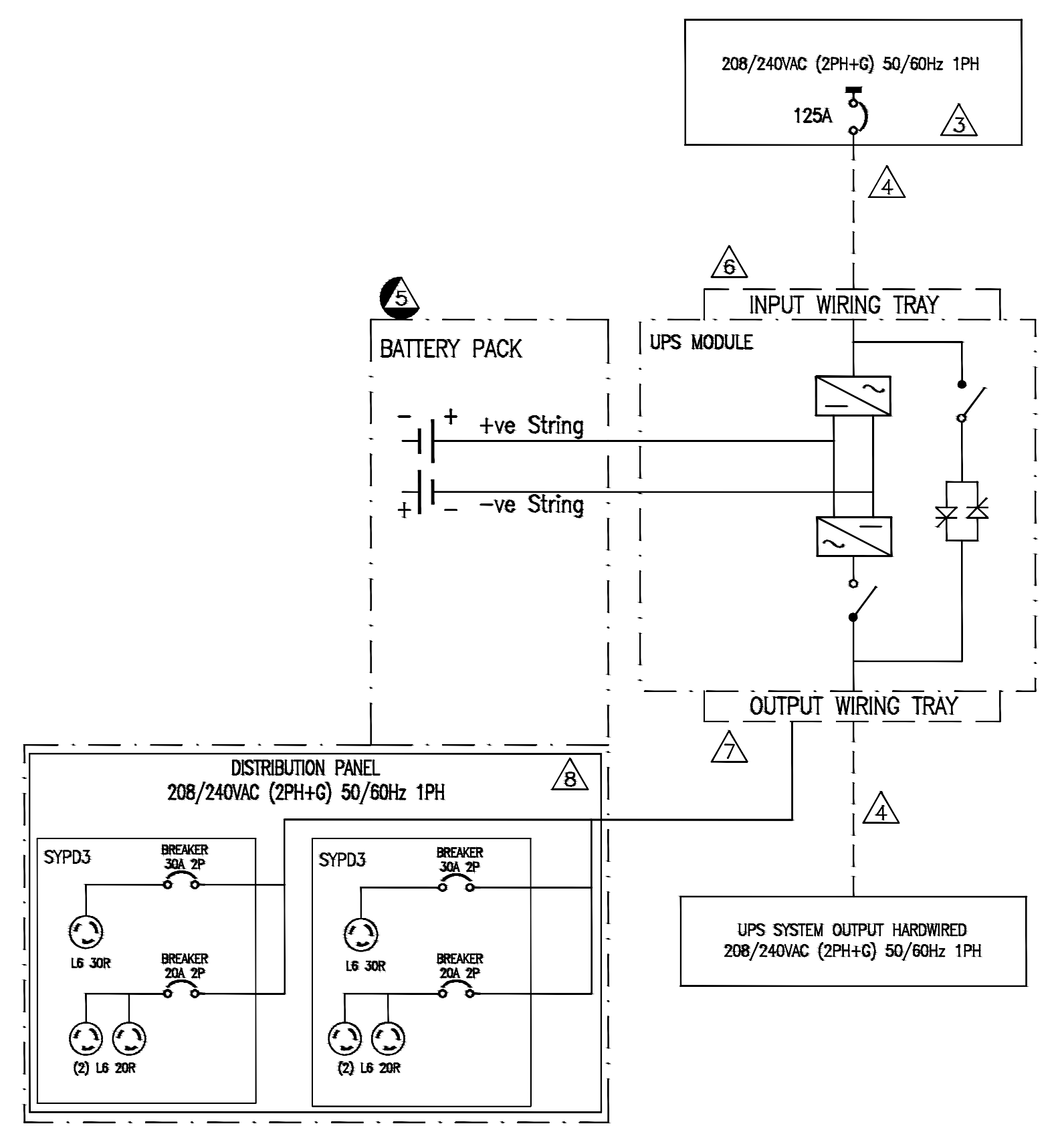
1. INSTALLATION MUST COMPLY WITH ALL APPLICABLE NATIONAL, STATE AND LOCAL CODES.
2. REFER TO PRODUCT DOCUMENTATION FOR ADDITIONAL DETAILS PRIOR TO INSTALLATION AND SITE PREPARATION WORK
- ⚠ SOURCE MUST BE 208/240 (2PH+G) 50/60HZ
- ⚠ DASHED LINES BETWEEN UNITS (- - -) REPRESENT CABLING PROVIDED BY ELECTRICIAN.
- ⚠ ADDITIONAL EXTERNAL BATTERY PACKS, (UP TO 10) CAN BE CONNECTED TO INCREASE RUN TIME.
- ⚠ REFER TO INSTALLATION MANUAL FOR DETAILED INSTRUCTIONS ON WIRING INPUT TRAY.
- ⚠ REFER TO INSTALLATION MANUAL FOR DETAILED INSTRUCTIONS ON WIRING OUTPUT TRAY.
- ⚠ PDU PANELS ARE MOUNTED ON THE REAR OF THE BATTERY PACK. OTHER, OPTIONAL, PDU PANELS CAN BE PURCHASED SEPARATELY AND INSTALLED TO PROVIDE ALTERNATIVE LOAD CONNECTIONS.



2 SWITCHED OUTLET DETAIL



3 OUTLET WIRING DETAIL



4 UPS WIRING DETAIL

SCALE: 3/16" = 1'-0"

ISSUE	DATE
1. CITY OF MIAMI COMMENTS	10/10/2022
2. CITY OF MIAMI COMMENTS	11/04/2022
3. CITY OF MIAMI COMMENTS	12/23/2022
4. CITY OF MIAMI COMMENTS	01/27/2023

AMERICANO
MEDIA GROUP
STUDIO
2920 NW 7 ST
MIAMI, FL 33125

PROPOSED
POWER
PLAN



7875 NW 12th Street, Ste. 101
Doral, FL 33126
(786) 762-2204
www.ves-us.com
C.A. #32810

FELIX F. RODRIGUEZ, PE, SE
FLORIDA PE #74481
Civil, Structural, Mechanical
admin@ves-us.com

VDES PROJECT #22D078

DATE
11/04/2022

SHEET
E-12