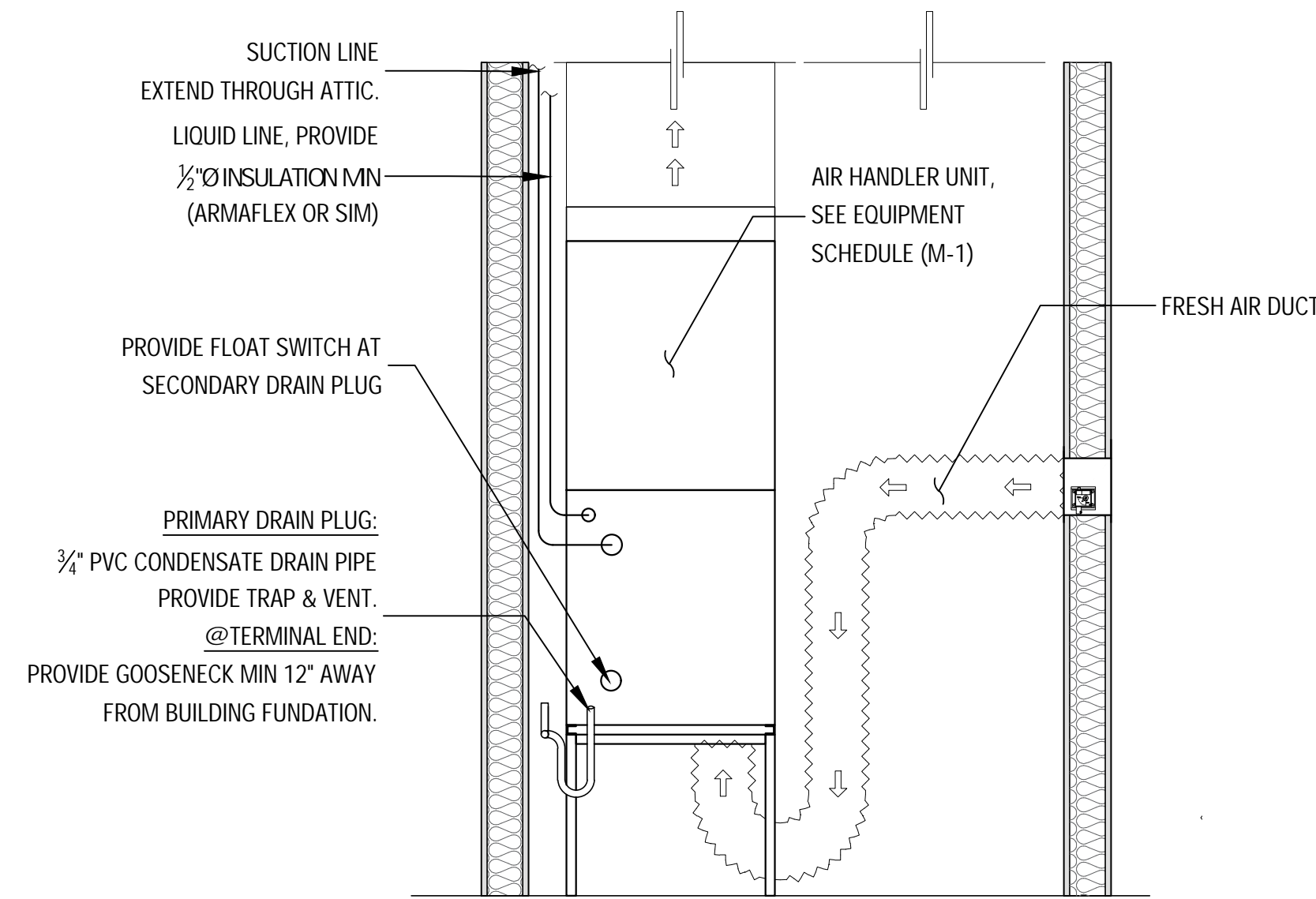


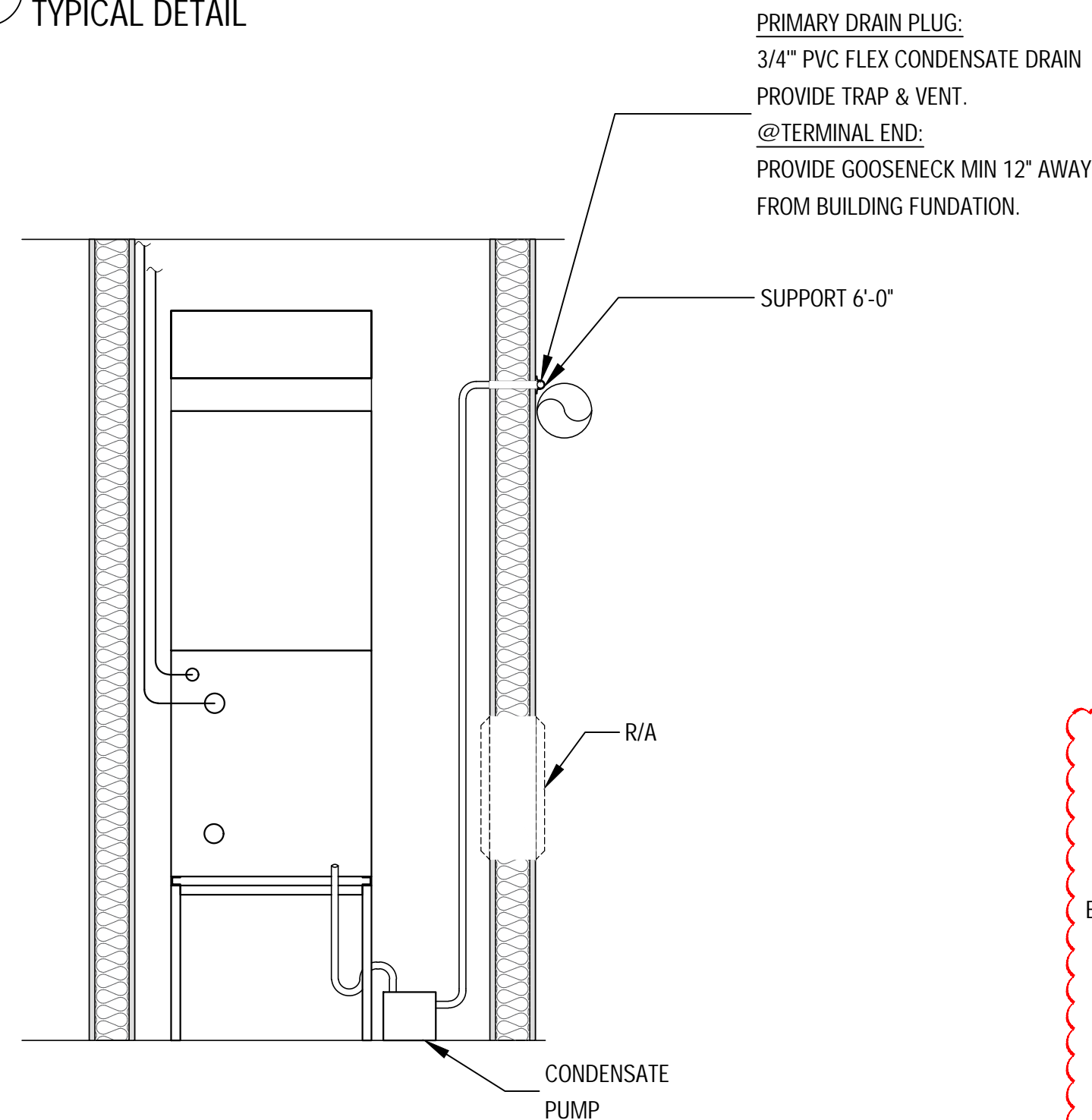
1 FLEXIBLE DUCT SUPPORT
TYPICAL DETAIL

2 FIBERGLASS DUCT BOARD
TYPICAL DETAIL

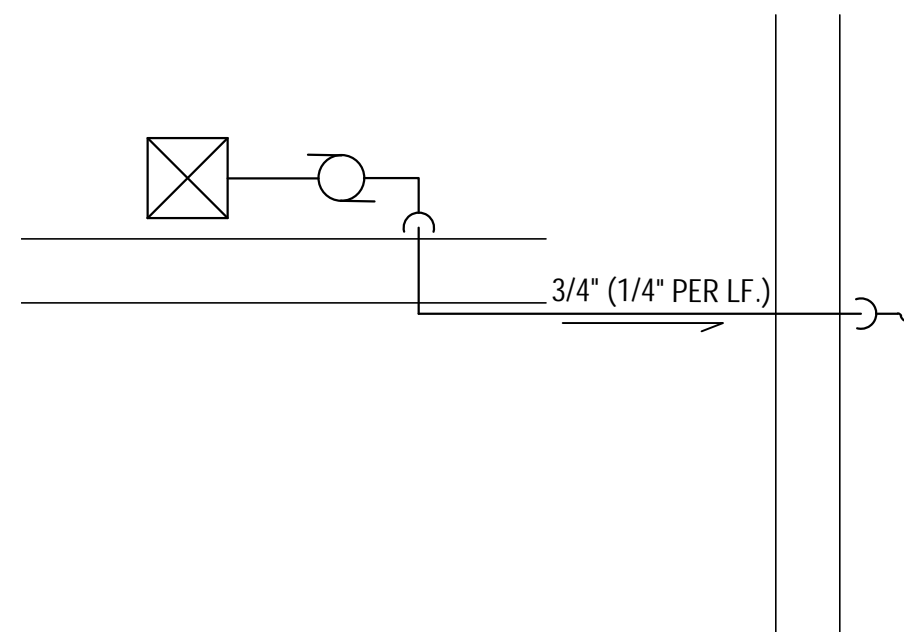
NOTE
CONTRACTOR SHALL INSTALL DUCT ANCHORAGE A MIN 2" CLEAR OF ANY SLAB REINFORCEMENT OR TENDONS.
MAXIMUM EMBEDMENT INTO OVERHEAD SLAB SHALL NOT EXCEED 1 1/2"



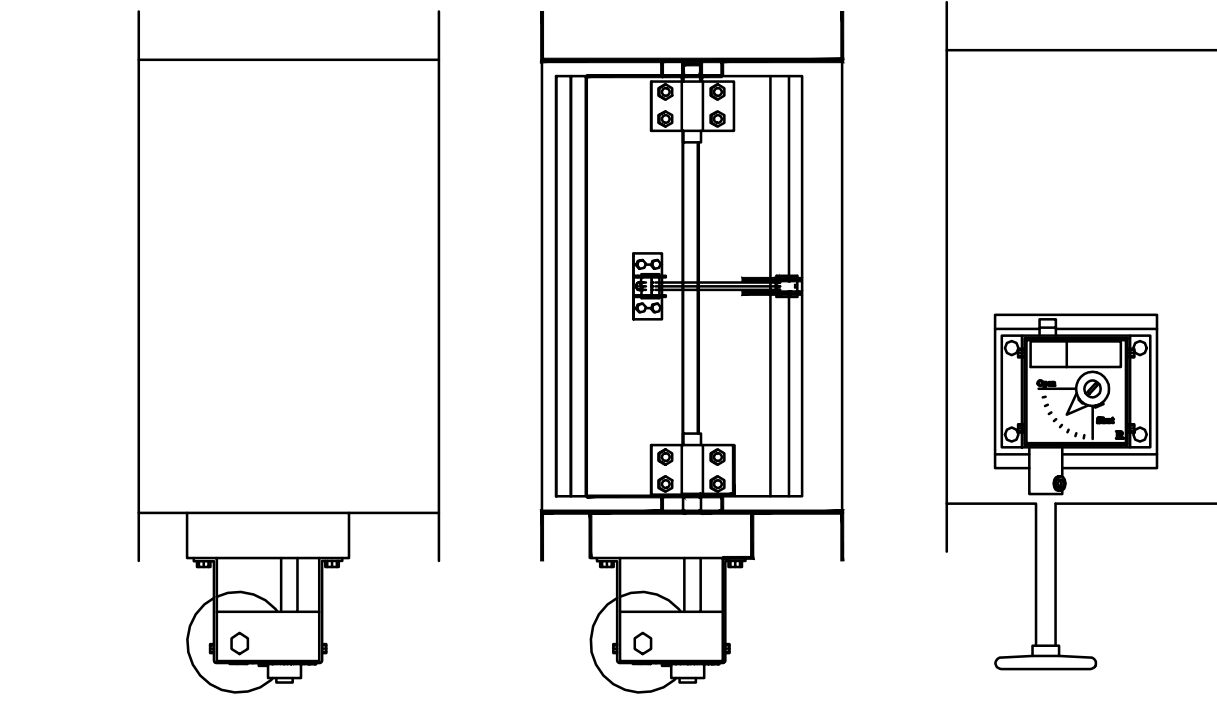
3 AIR HANDLER UNIT
TYPICAL DETAIL



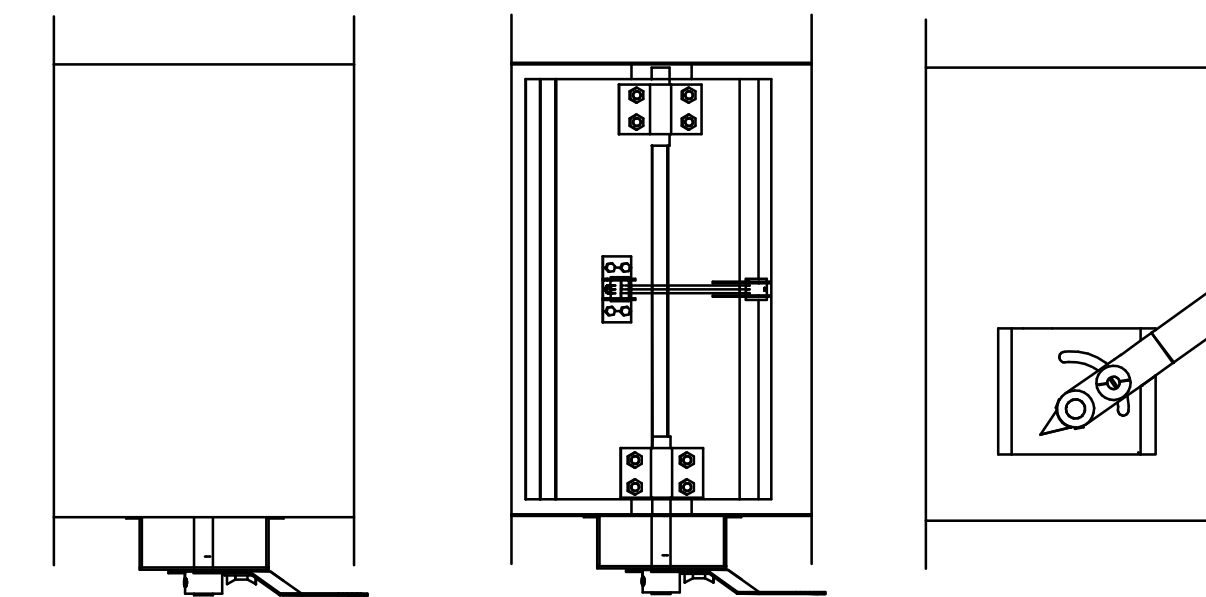
4 AHU-3 CONDENSATE PUMP
TYPICAL DETAIL



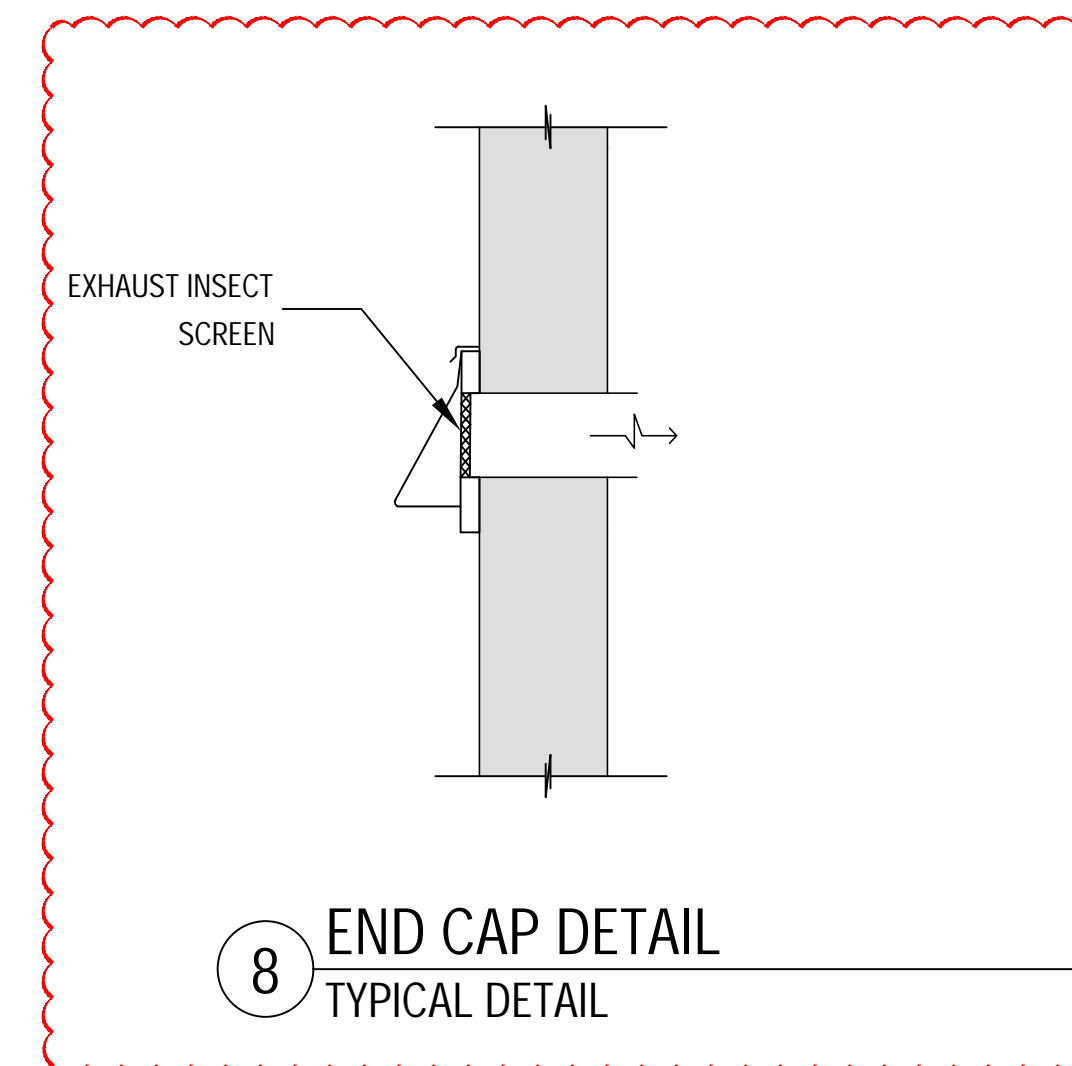
5 AHU-3 PIPING LAYOUT
TYPICAL DETAIL



6 MOTORIZED VOLUME CONTROL DAMPER
TYPICAL DETAIL



7 MANUAL VOLUME CONTROL DAMPER
TYPICAL DETAIL



8 END CAP DETAIL
TYPICAL DETAIL

- NOTES:
1. WALL OPENINGS SHALL BE 1/8" PER FOOT LARGER THAN THE OVERALL ASSEMBLY MINIMUM OPENING SIZE SHALL BE 1/4" ALL AROUND.
 2. DAMPER RATING SHALL BE 1 1/2 HOUR UNLESS NOTED OTHERWISE.
 3. PROVIDE ACCESS DOOR IN DUCTWORK AS NEAR AS POSSIBLE TO THE FIRE DAMPER. ACCESS DOOR SHALL BE LARGE ENOUGH TO PERMIT MAINTENANCE AND RESETING OF THE DEVICES. PROVIDE TWO ACCESS DOORS IF NECESSARY. THE ACCESS DOOR LOCATION SHALL BE FREE OF OBSTRUCTION AND FULLY ACCESSIBLE.
 4. FLOOR SLEEVE, MOUNTING ANGLES, AND FASTENERS SHALL BE PER NFPA 90A AND THE MANUFACTURERS W.U.L. LISTED INSTALLATION INSTRUCTIONS.
 5. FIRESTOPPING COMPOUND SHALL BE 3M CP 25 CAULK OR EQUIVALENT.

NOTE
CONTRACTOR SHALL NOT PENETRATE THROUGH EX. TIE BEAM

DATE
01/27/2023

ISSUE
4. CITY OF MIAMI COMMENTS

AMERICANO
MEDIA GROUP
STUDIO
2920 NW 7 ST
MIAMI, FL 33125

MECHANICAL
DETAILS &
CALCULATIONS

VECTOR
Engineering Services

7875 NW 12th Street, Ste. 101
Doral, FL 33126
(786) 762-2204
www.ves-us.com
C.A. #32810

FELIX F. RODRIGUEZ, PE, SE
FLORIDA PE #74481
Civil, Structural, Mechanical
admin@ves-us.com

VDES PROJECT #22D078

DATE
11/04/2022

SHEET
M-12