

NEW WINDOW SCHEDULES					
MARK	SIZE	MATERIAL	TYPE	DESIGN WIND PRESSURE	REMARK
A	10'-0" W. x 10'-0" H	FIXED GLASS	EXTERIOR	+45 / -47	BOTTOM OF WD AT 0'-0 F.F.
B	5'-0" W. x 8'-6" H	FIXED GLASS	EXTERIOR	+45 / -47	BOTTOM OF WD 18" A.F.F.
C	10'-0" W. x 4'-0" H	FIXED TEMPERED GLASS	INTERIOR		BOTTOM OF WD 48" A.F.F.
D	5'-0" W. x 5'-0" H	FIXED GLASS	EXTERIOR	+45 / -47	BOTTOM OF WD 5" A.F.F.

DOOR SCHEDULES				
	SIZE	MATERIAL	HARDWARE	REMARK
1	(2)3'-0"x7'-0"	GLASS	H-2, 4	EXISTING
2	3'-0"x7'-0"	STEEL	H-2, 4	EXISTING
3	3'-0"x8'-0"	WOOD	H-1,4	NEW
4	3'-0"x8'-0"	HOLLOW CORE	H-5	NEW
5	3'-0"x8'-0"	HOLLOW CORE	H-1, 5	NEW
6	3'-0"x7'-0"	WOOD	H-4, 5	NEW 1-HR FIRE RATED DOOR
7	(2)3'-0"x8'-0"	HOLLOW CORE	H-1, 5	NEW

DOOR HARDWARE SCHEDULES

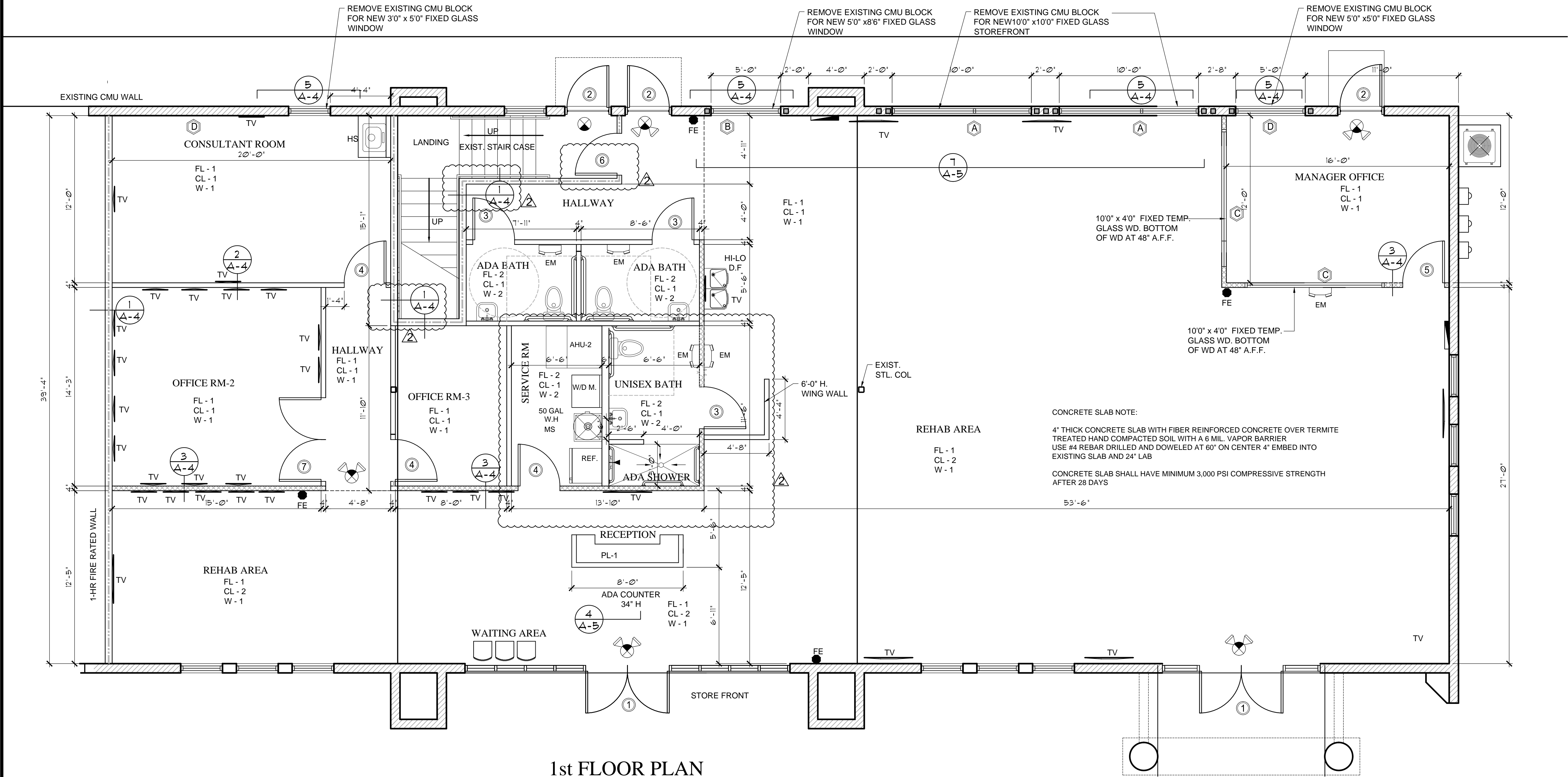
H-1: PRIVACY LOCKSET  
H-2: KEYED LOCKSET  
H-3: DEAD BOLT  
H-4: AUTOMATIC DOOR CLOSER  
H-5: LEVERED OPENER HANDLE  
H-6: PANIC HARDWARE

DOOR HARDWARE NOTES

- ALL LOCK AND PASSAGE SETS TO BE SCHLAGE GRADE OR BETTER. SUBMIT OTHERS FOR APPROVAL. LOCKS NEED TO BE REKEYABLE.  
ALL DOORS AND HARDWARE TO COMPLY WITH APPLICABLE IFPPFC, FBC-BUILDING AND FBC - ACCESSIBILITY
- ALL DOORS AND HARDWARE TO COMPLY WITH A.D.A. AND CODE OF FEDERAL REGULATION, UTILIZING A LEVER LATCH OR LOCKSET SUCH AS:
- DOOR HARDWARE, HANDLES, PULLS, LATCHES, LOCKS, AND OTHER OPERATING DEVICES ON ACCESSIBLE DOORS SHALL HAVE A SHAPE THAT IS EASY TO GRASP WITH ONE HAND AND DOES NOT REQUIRE TIGHT GRASPING, TIGHT PINCHING, OR TWISTING OF THE WRIST TO OPERATE. LEVER-OPERATED MECHANISMS, PUSH-TYPE MECHANISMS, AND U-SHAPED HANDLES ARE ACCEPTABLE DESIGNS. HARDWARE REQUIRED FOR ACCESSIBLE DOOR PASSAGE SHALL BE MOUNTED BETWEEN 34 TO 48 INCHES ABOVE FINISH FLOOR

WALL LEGENDS

- EXISTING CMU WALL WITH NEW 1/2" THICK DRYWALL GYPSUM ON HATCH CHANNEL & R-5 INSULATION
- NEW 1-HR FIRE RATED WALL. SEE 1 A-4
- NEW 4" PARTITION WALL - FULL HEIGHT  
SEE 2 A-4 FOR DETAIL
- NEW 4" PARTITION WALL - FULL HEIGHT  
SEE 3 A-4 FOR DETAIL
- = INDICATE NEW CONCRETE FILLED CELL WITH #5 VERTICAL FROM FOOTING TO NEW PRECAST HEADER



1st FLOOR PLAN

SCALE: 1/4"=1'-0"

BIONETIC ENHANCEMENT CENTER 10830 WELLNESS WAY, SUITE #120 ORLANDO, FL		FLOOR PLAN		Date: 4-14-2021		PROFESSIONAL SEAL		To the best of the knowledge of the Engineer or Architect the plans and specifications herein comply with the 2017 Florida building code and are Signed and Sealed accordingly:		REV	DATE	DESCRIPTION	BY
DRAWN		KL								Δ	12-20-20	RESPOND TO COUNTY'S COMMENT	
CHECKED										Δ	4-14-21	RESPOND TO COUNTY'S COMMENT	
CAD FILE		A-1								Δ			
PROJECT										Δ			
DRAWING NUMBER		A-1								Δ			
DATE		8-25-20								Δ			
										Δ			
										Δ			
										Δ			
										Δ			
										Δ			
										Δ			
										Δ			
										Δ			
										Δ			
										Δ			
										Δ			
										Δ			
										Δ			
										Δ			
										Δ			
										Δ			
										Δ			
										Δ			
										Δ			
										Δ			
										Δ			
										Δ			
										Δ			
										Δ			
										Δ			
										Δ			
										Δ			
										Δ			
										Δ			
										Δ			
										Δ			
										Δ			
										Δ			
										Δ			
										Δ			
										Δ			
										Δ			
										Δ			
										Δ			
										Δ			
										Δ			
										Δ			
										Δ			
										Δ			
										Δ			
										Δ			
										Δ			
										Δ			
										Δ			
										Δ			
										Δ			
										Δ			
										Δ			
										Δ			
										Δ			
										Δ			
										Δ			
										Δ			
										Δ			
										Δ			
										Δ			
										Δ			
										Δ			
										Δ			
										Δ			
										Δ			
										Δ			
										Δ			
										Δ			
										Δ			
										Δ			
										Δ			
										Δ			
										Δ			
										Δ			
										Δ			
										Δ			
										Δ			
										Δ			
										Δ			
										Δ			
										Δ			
										Δ			

This item has been electronically signed and sealed by [Khanh Le - Florida, PE # 70935] on the Date and/or Time Stamp shown using a digital signature.

Printed copies of this document are not considered signed and sealed and the signature must be verified on any electronic copies.

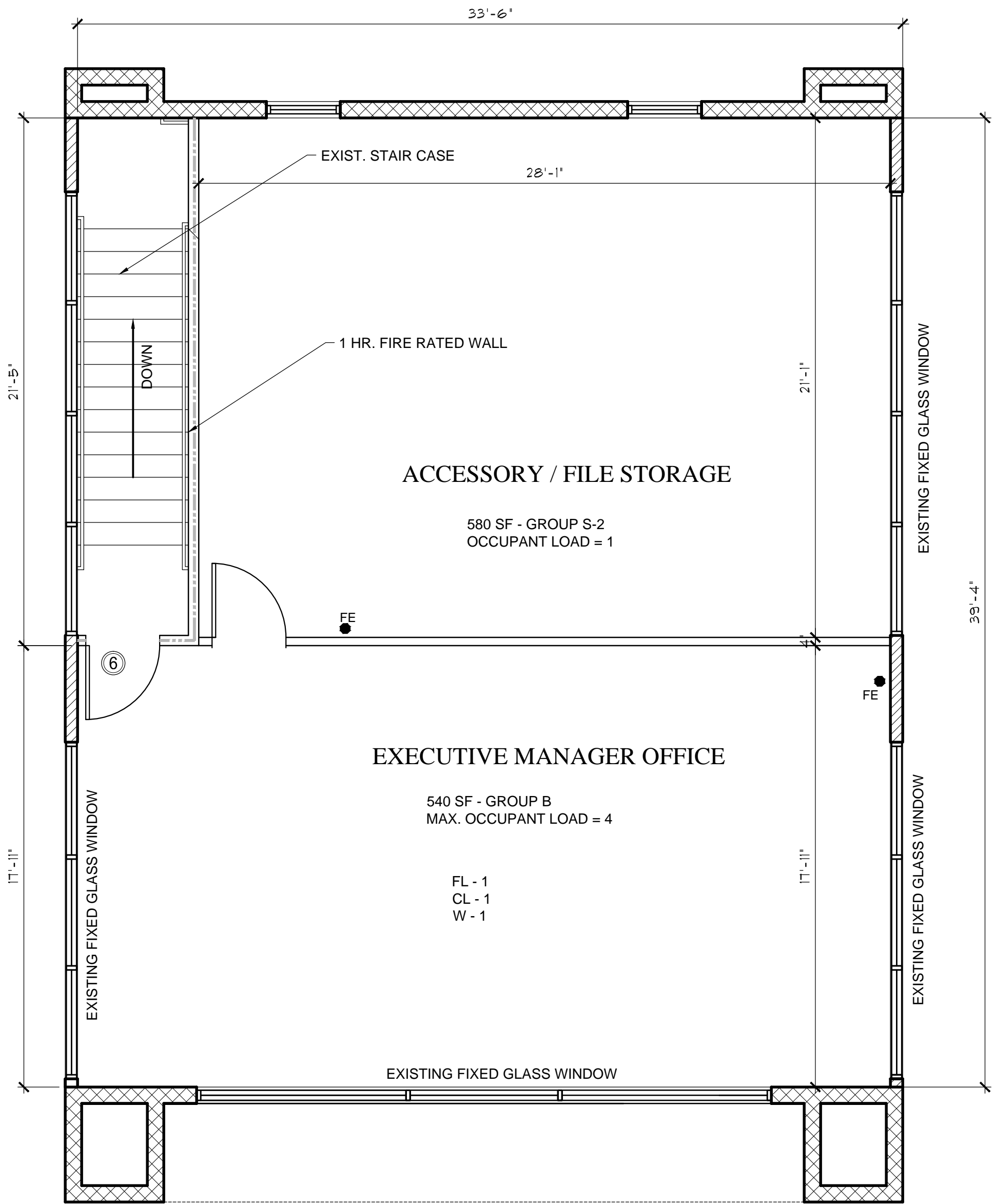
FINISH SCHEDULES	
WALL / CEILING	
W - 1	PAINT INTERIOR WALLS, DOOR AND FRAMES WITH SHERWIN WILLIAMS OR EQUAL. COLOR BY TENANT
W - 2	CERAMIC TILE BY TENANT
CL-1	SUSPENDED 2X2 ARMSTRONG DUNE 1775 9/16 BEVELED REGULAR TILES.
CL-2	OPEN CEILING TO ROOF DECK
FLOOR	
FL - 1	VINYL LAMINATE FLOOR. COLOR TBD.
FL - 2	CERAMIC TILE BY TENANT
B - 1	NEW 4" VINYL BASE, COLOR TBD.
PLASTIC LAMINATE	
PL-1	BASE/ UPPER/ COUNTERTOP - MILLWORK LAMINATES, TBD
MISC	
FINISH NOTES: ALL ALTERNATE SPECIFICATIONS MUST BE SUBMITTED WITH SAMPLES, TO TENANT FOR APPROVAL	
ALL WALL, FLOOR & CEILING SHALL HAVE FLAME SPREAD INDEX 'C'	

201.1.1VERTICAL ACCESSIBILITY:

Sections 553.501-553.513, F.S., and the ADA Standards for Accessible Design do not relieve the owner of any building, structure or facility governed by those sections from the duty to provide vertical accessibility to all levels above and below the occupiable grade level regardless of whether the Standards require an elevator to be installed in such building, structure or facility, except for:

- Elevator pits, elevator penthouses, mechanical rooms, piping or equipment catwalks and automobile lubrication and maintenance pits and platforms.
- Unoccupiable spaces, such as rooms, enclosed spaces and storage spaces that are not designed for human occupancy, for public accommodations or for work areas.
- Occupiable spaces and rooms that are not open to the public and that house no more than five persons, including, but not limited to equipment control rooms and projection booths

NOTE: THE 2nd FLOOR) SHALL BE USED FOR MANAGER OFFICE ONLY  
THERE SHALL NOT BE MORE THAN 5 PEOPLE ALLOWED ON THE SECOND FLOOR



2nd FLOOR PLAN

SCALE: 1/4"=1'-0"

This item has been electronically signed and sealed  
by [Khanh Le - Florida, PE # 70935]  
on the Date and/or Time Stamp shown using a digital signature.

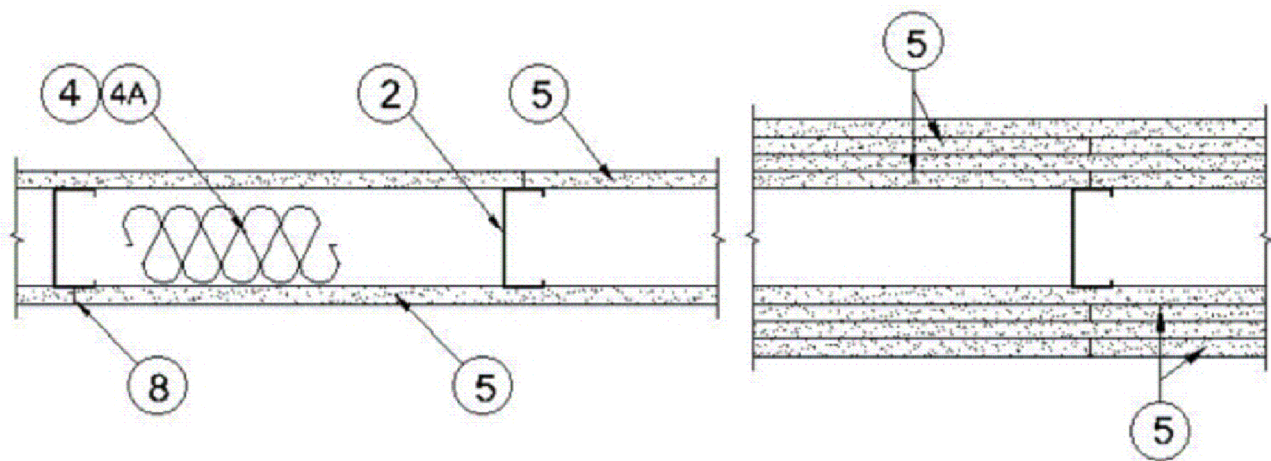
Printed copies of this document are not considered signed and sealed and  
the signature must be verified on any electronic copies.

BIONETIC ENHANCEMENT CENTER 10030 WELLNESS WAY, SUITE #120 ORLANDO, FL		Date: 4-14-2021		PROFESSIONAL SEAL		To the best of the knowledge of the Engineer or Architect the plans and specifications herein comply with the 2017 Florida building code and are Signed and Sealed accordingly.		REV	DATE	DESCRIPTION	BY
DRAWN		KL						△	12-20-20	RESPOND TO COUNTY'S COMMENT	
CHECKED								△			
CAD FILE		A-2						△	4-14-21	RESPOND TO COUNTY'S COMMENT	
PROJECT								△			
DRAWING NUMBER								△			
A-2								△			
DATE		8-25-20						△			
								△			
								△			
								△			
								△			
								△			
								△			
								△			
								△			
								△			
								△			
								△			
								△			
								△			
								△			
								△			
								△			
								△			
								△			
								△			
								△			
								△			
								△			
								△			
								△			
								△			
								△			
								△			
								△			
								△			
								△			
								△			
								△			
								△			
								△			
								△			
								△			
								△			
								△			
								△			
								△			
								△			
								△			
								△			
								△			
								△			
								△			
								△			
								△			
								△			
								△			
								△			
								△			
								△			
								△			
								△			
								△			
								△			
								△			
								△			
								△			
								△			
								△			
								△			
								△			
								△			
								△			
								△			
								△			
								△			
								△			
								△			
								△			
								△			
								△			
								△			
								△			
								△			
								△			
								△			
								△			
								△			
								△			
								△			
								△			
								△			
								△			
								△			
								△			
								△			
								△			
								△			
								△			
								△			
								△			
								△			



Nonbearing Wall Ratings — 1, 2, 3 or 4 Hr (See Items 4 & 5 through 5K)

\* Indicates such products shall bear the UL or eUL Certification Mark for jurisdictions employing the UL or eUL Certification (such as Canada), respectively.



1. **Floor and Ceiling Runners** — (Not Shown) — For use with Item 2 — Channel shaped, fabricated from min 25 MSG corrosion-protected steel, min depth to accommodate stud size, with min 1-1/4 in. long legs, attached to floor and ceiling with fasteners 24 in. OC max.

2. **Steel Studs** — Channel shaped, fabricated from min 25 MSG corrosion-protected steel, min depth as indicated under Item 5, spaced a max of 24 in. OC. Studs to be cut 3/8 to 3/4 in. less than assembly height.

4. **Batts and Blankets\*** — (Required as indicated under Item 5) — Mineral wool batts, friction fitted between studs and runners. Min nom thickness as indicated under Item 5.

See **Batts and Blankets** (BKNV or BZJZ) Categories for names of Classified companies.

4A. **Batts and Blankets\*** — (Optional) — Placed in stud cavities, any glass fiber or mineral wool insulation bearing the UL Classification Marking as to Surface Burning Characteristics and/or Fire Resistance.

5. **Gypsum Board\*** — Gypsum panels with beveled, square or tapered edges, applied vertically or horizontally. Vertical joints centered over studs and staggered one stud cavity on opposite sides of studs. Vertical joints in adjacent layers (multilayer systems) staggered one stud cavity. Horizontal joints need not be backed by steel framing. Horizontal edge joints and horizontal butt joints on opposite sides of studs need not be staggered. Horizontal edge joints and horizontal butt joints in adjacent layers (multilayer systems) staggered a min of 12 in. The thickness and number of layers for the 1 hr, 2 hr, 3 hr and 4 hr ratings are as follows:

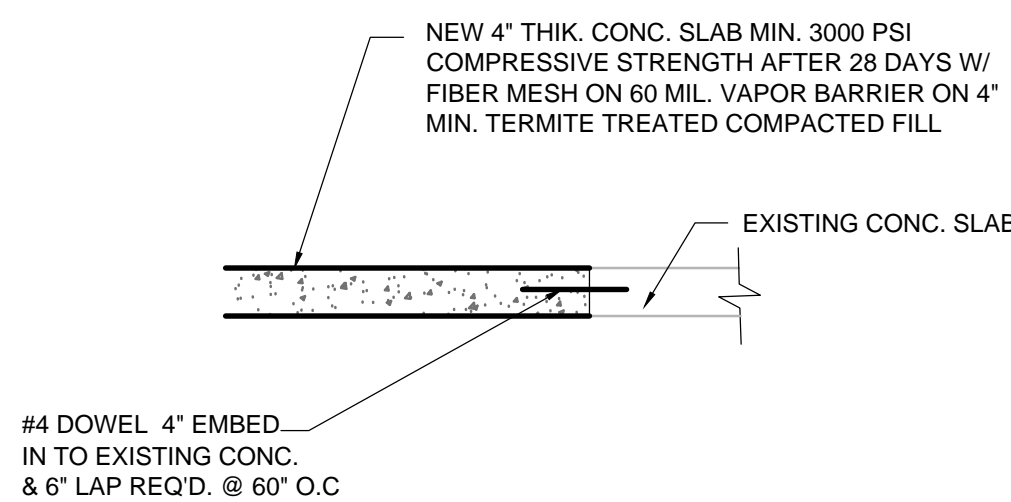
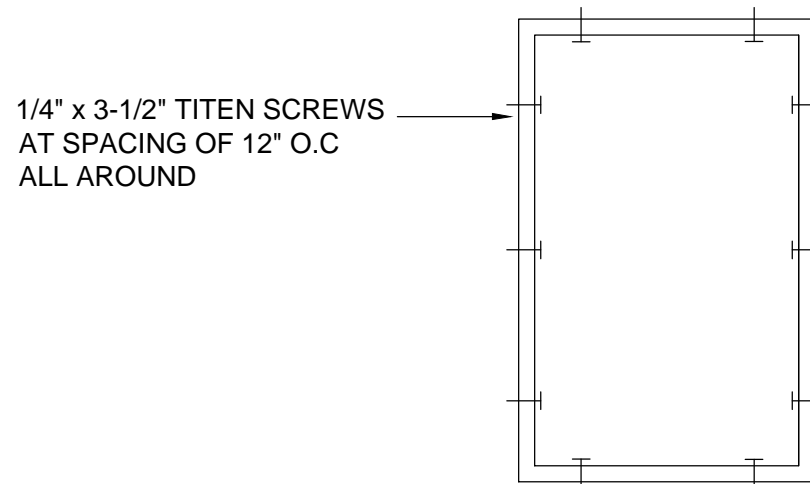
Gypsum Board Protection on Each Side of Wall

Rating, Hr	Min Stud Depth, in. Items 2, 2C, 2D, 2F, 2G, 2O	No. of Layers & Thkns of Panel	Min Thkns of Insulation (Item 4)
1	3-1/2	1 layer, 5/8 in. thick	Optional
1	2-1/2	1 layer, 1/2 in. thick	1-1/2 in.
1	1-5/8	1 layer, 3/4 in. thick	Optional
2	1-5/8	2 layers, 1/2 in. thick	Optional

6. **Fasteners** — (Not Shown) — For use with Items 2 and 2F - Type S or S-12 steel screws used to attach panels to studs (Item 2) or furring channels (Item 7). **Single layer systems:** 1 in. long for 1/2 and 5/8 in. thick panels or 1-1/4 in. long for 3/4 in. thick panels, spaced 8 in. OC when panels are applied horizontally, or 8 in. OC along vertical and bottom edges and 12 in. OC in the field when panels are applied vertically. **Two layer systems:** First layer- 1 in. long for 1/2 and 5/8 in. thick panels or 1-1/4 in. long for 3/4 in. thick panels, spaced 16 in. OC. Second layer- 1-5/8 in. long for 1/2 in., 5/8 in. thick panels or 2-1/4 in. long for 3/4 in. thick panels, spaced 16 in. OC with screws offset 8 in. from first layer. **Three-layer systems:** First layer- 1 in. long for 1/2 in., 5/8 in. thick panels, spaced 24 in. OC. Second layer- 1-5/8 in. long for 1/2 in., 5/8 in. thick panels, spaced 24 in. OC. Third layer- 2-1/4 in. long for 1/2 in., 5/8 in. thick panels or 2-5/8 in. long for 5/8 in. thick panels, spaced 12 in. OC. Screws offset min 6 in. from layer below. **Four-layer systems:** First layer- 1 in. long for 1/2 in., 5/8 in. thick panels, spaced 24 in. OC. Second layer- 1-5/8 in. long for 1/2 in., 5/8 in. thick panels, spaced 24 in. OC. Third layer- 2-1/4 in. long for 1/2 in. thick panels or 2-5/8 in. long for 5/8 in. thick panels, spaced 24 in. OC. Fourth layer- 2-5/8 in. long for 1/2 in. thick panels or 3 in. long for 5/8 in. thick panels, spaced 12 in. OC. Screws offset min 6 in. from layer below.

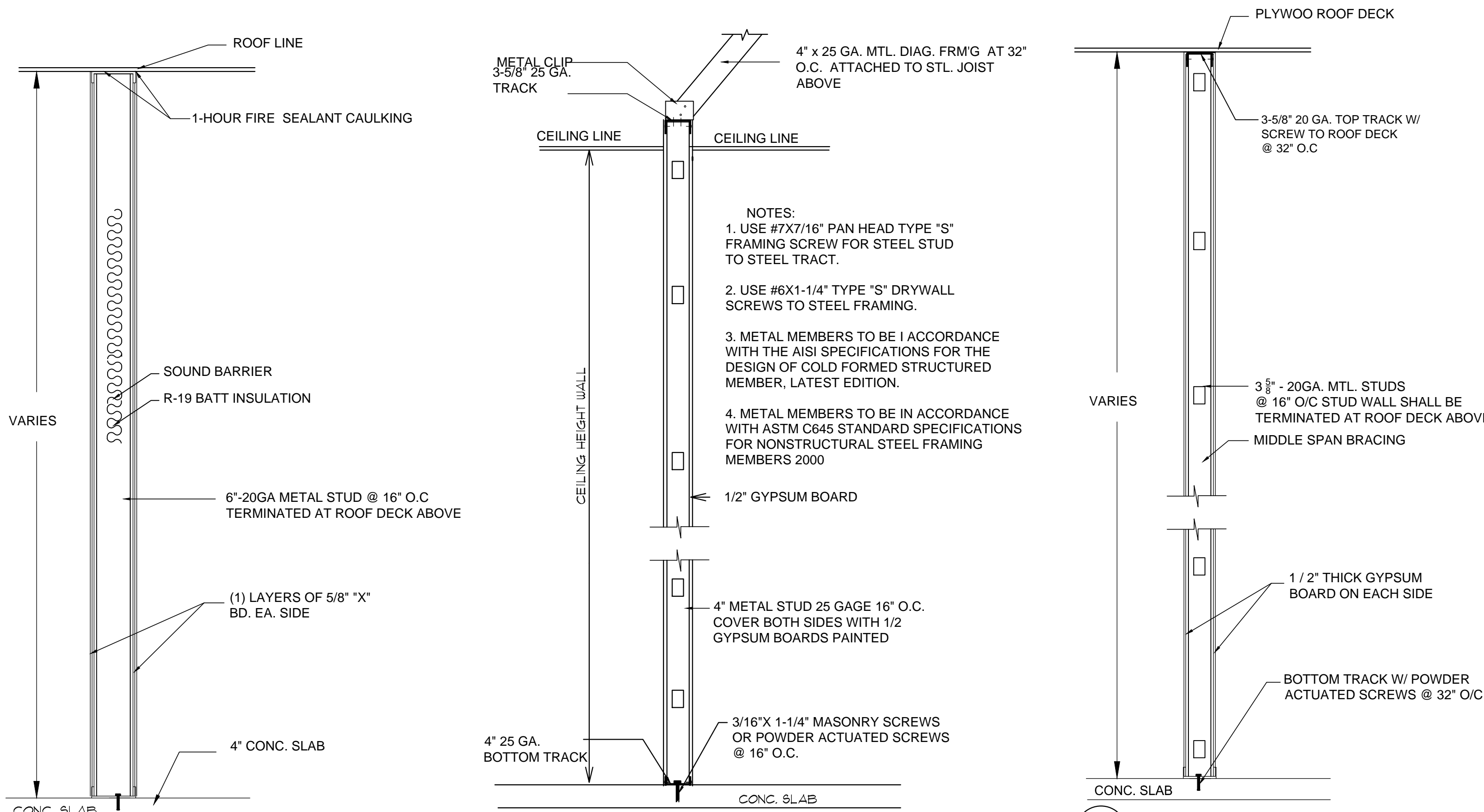
8. **Joint Tape and Compound** — Vinyl or casein, dry or premixed joint compound applied in two coats to joints and screw heads of outer layers. Paper tape, nom 2 in. wide, embedded in first layer of compound over all joints of outer layer panels. Paper tape and joint compound may be omitted when gypsum panels are supplied with a square edge.

10. **Caulking and Sealants\*** — (Optional, Not Shown) — A bead of acoustical sealant applied around the partition perimeter for sound control.



5 BUCK ATTACHEMENT DETAIL  
SCALE: N.T.S.

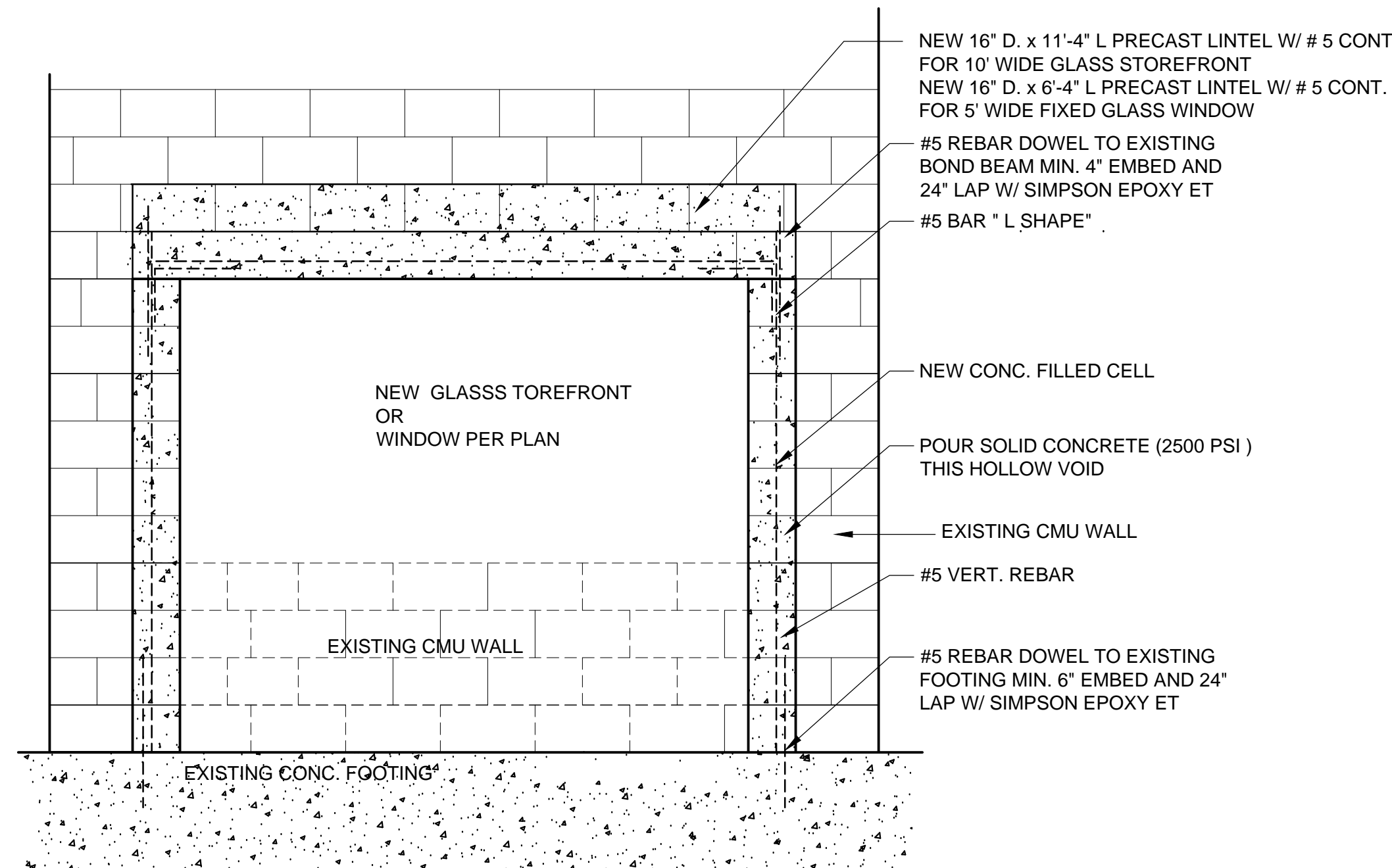
6 TYPICAL CONCRETE SLAB REPAIRL



1 1-HR FIRE RATED WALL DETAIL  
N.T.S.

2 NEW INTERIOR PARTITION WALL  
N.T.S.

3 INTERIOR PARTITION WALL

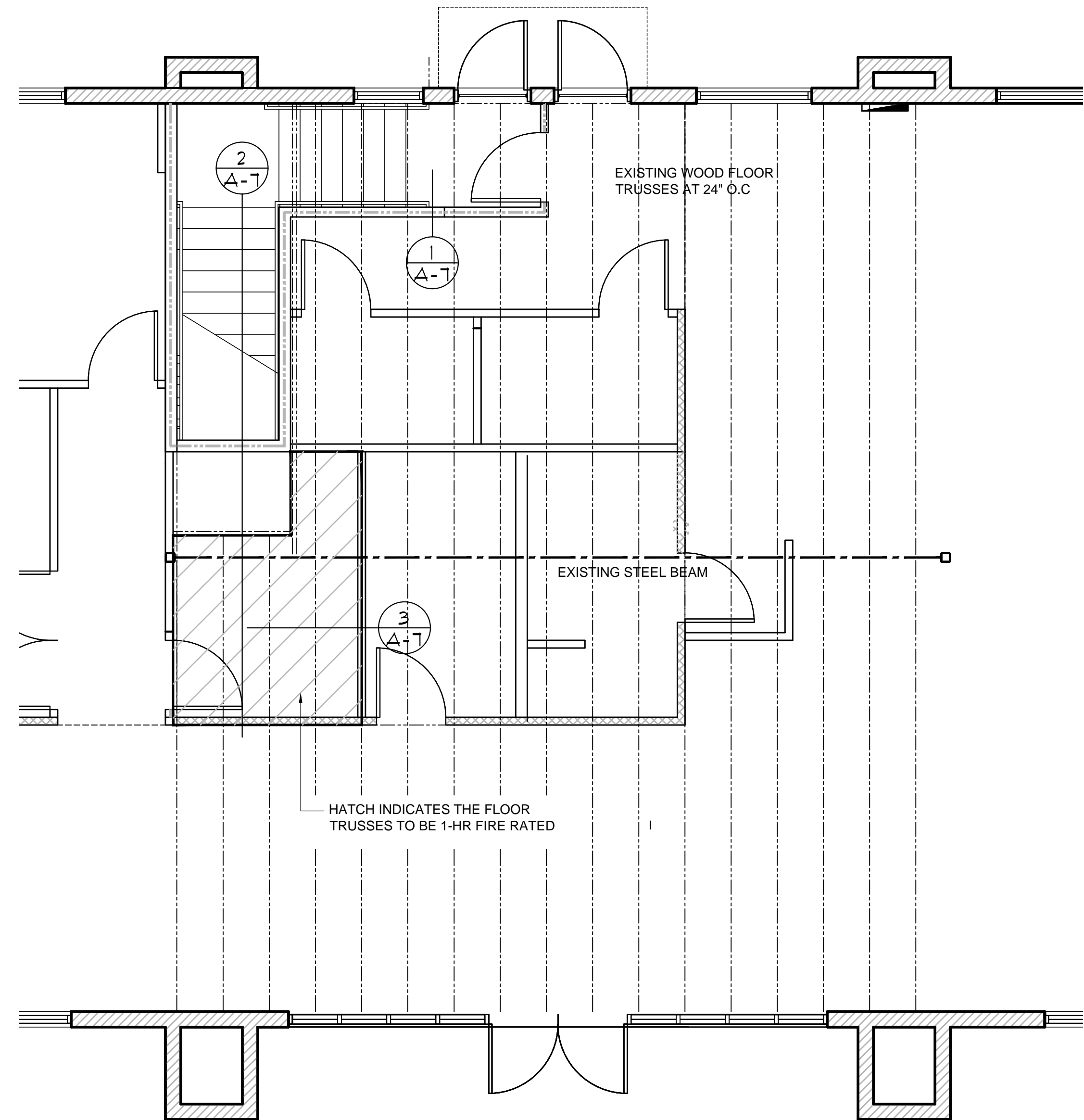
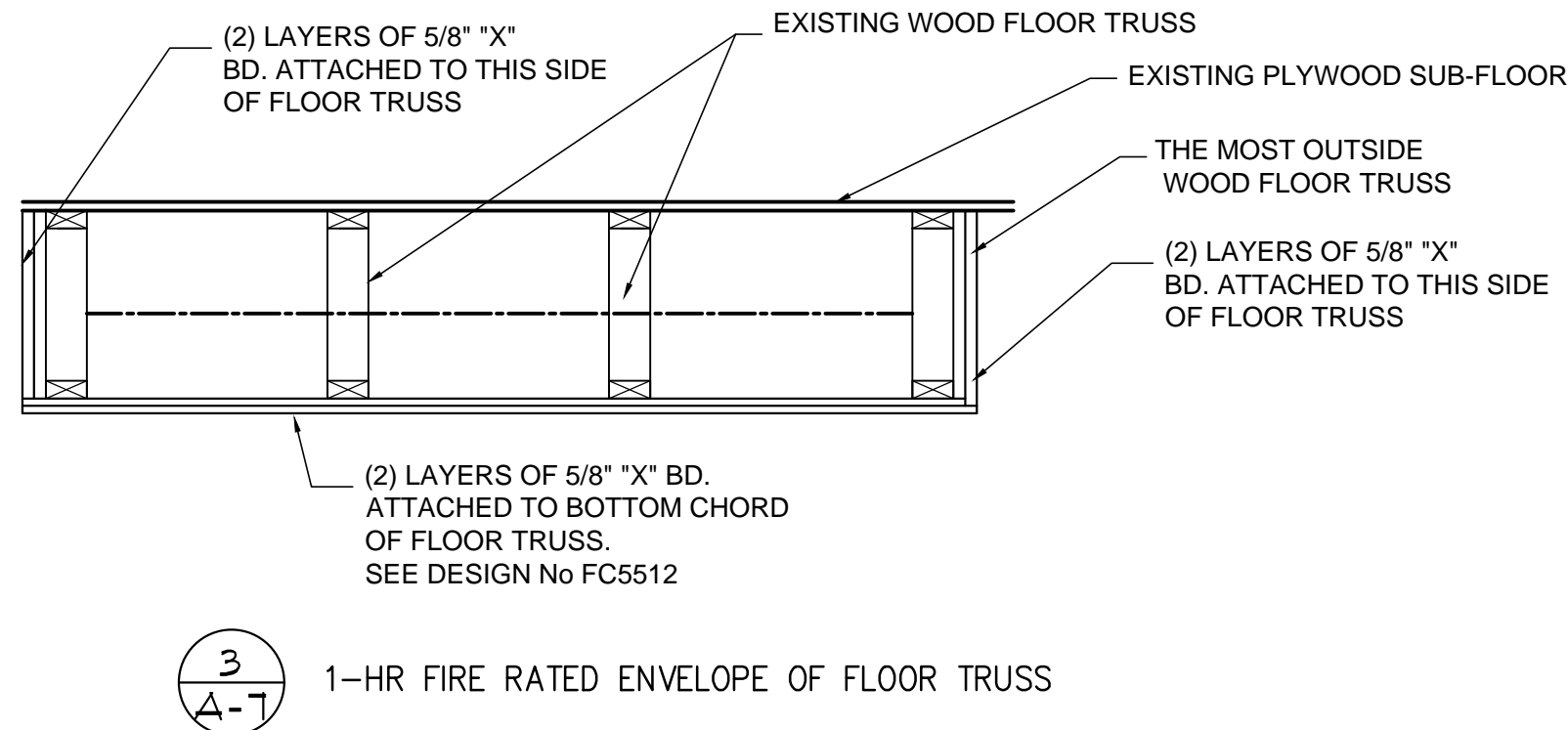
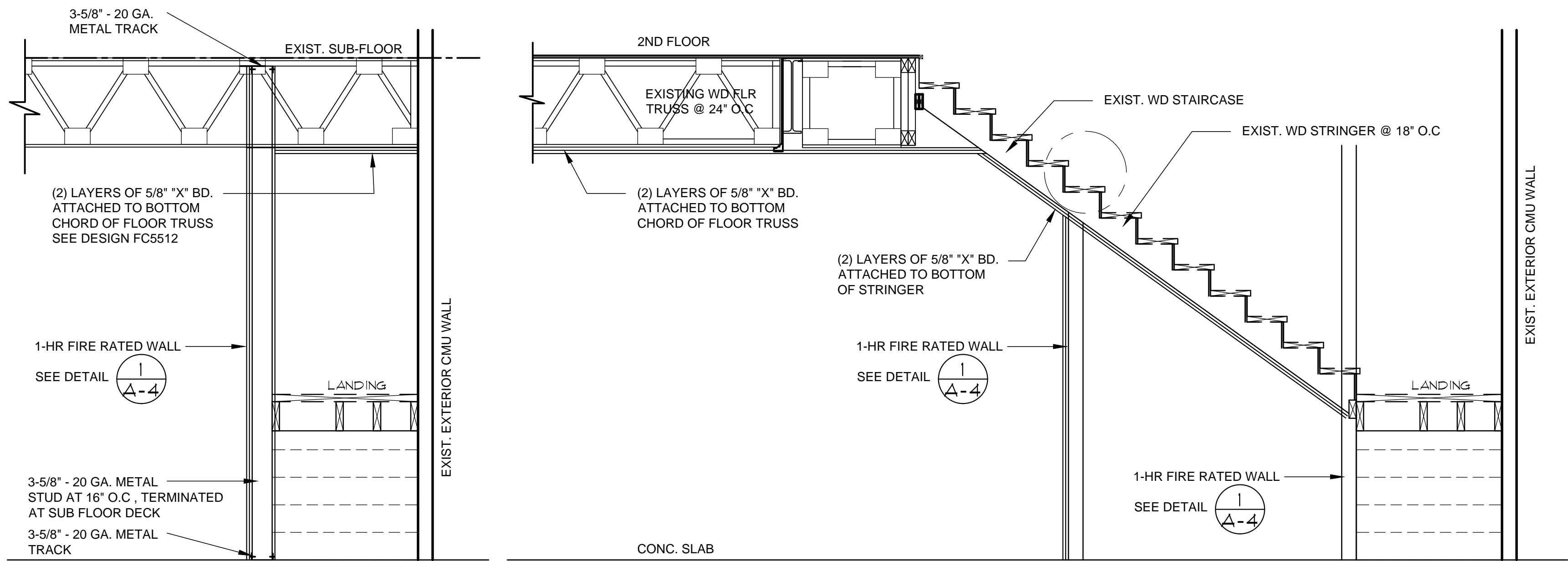


4 DETAIL FOR INSTALL PRECAST HEADER ABOVE OPENING  
SCALE: N.T.S.

This item has been electronically signed and sealed by [Khanh Le - Florida, PE # 70935] on the Date and/or Time Stamp shown using a digital signature.

Printed copies of this document are not considered signed and sealed and the signature must be verified on any electronic copies.

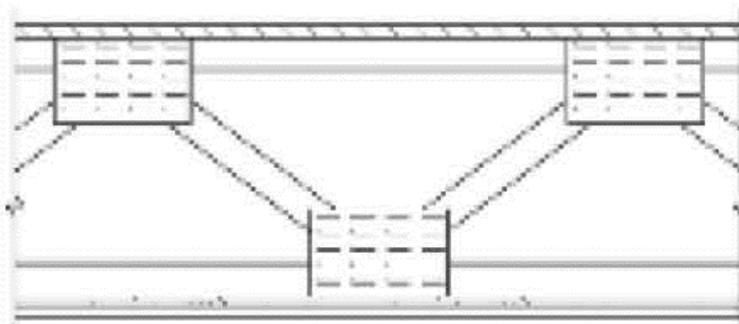
BIONETIC ENHANCEMENT CENTER 10030 WELLNESS WAY, SUITE #120 ORLANDO, FL				PROFESSIONAL SEAL			
DRAWN				KL			
CHECKED							
CAD FILE				A-4			
PROJECT							
DRAWING NUMBER							
A-4							
DATE				8-25-20			



**FLOOR TRUSS FRAMING PLAN**  
SCALE: 1/4"=1'-0"

146

GA-600-2009 FIRE RESISTANCE DESIGN MANUAL

FLOOR-CEILING SYSTEMS, WOOD FRAMED			
GA FILE NO. FC 5512	GENERIC	1 HOUR FIRE	
GYPSUM BOARD, PARALLEL CHORD WOOD TRUSSES			
CEILING: Base layer 1/2" type X gypsum wallboard or gypsum veneer base applied perpendicular to wood trusses 24" o.c. with 1 1/4" Type S drywall screws 24" o.c. Face layer 1/2" type X gypsum wallboard or gypsum veneer base applied perpendicular to trusses with 1 7/8" Type S drywall screws 12" o.c. and 1 1/2" Type G drywall screws 12" o.c. placed 3" back from either side of end joints. Joints offset 24" from base layer joints.			
TRUSSES: Chord and web members fabricated from 2 x 4 lumber with 20 gage steel connector plates having a minimum tooth length of 5/16". Plate design values based upon a safety factor of 4. Trusses have a minimum depth of 12".			
FLOORING: 19/32" T & G plywood with exterior glue applied at right angles to top of trusses with 6d common nails 6" o.c. Plywood end joints staggered 48".			
			
		Approx. Ceiling Weight: 4 psf Fire Test: FM FC214 - 1 hour, 7-6-78	

BY	DESCRIPTION	DATE	REV
	RESPOND TO COUNTY'S COMMENT	12-20-20	Δ
	RESPOND TO COUNTY'S COMMENT	4-14-21	Δ
			Δ
			Δ

To the best of the knowledge of the Engineer or Architect, the plans and specifications herein comply with the 2017 Florida building code and are Signed and Sealed accordingly.	
<b>KL ENGINEERING</b> FLORIDA C.A. #33303 427 Palm Crest Lane Lake Mary, FL 32746 Phone (407) 361-8017, email: klengeing1@gmail.com	PROFESSIONAL SEAL

<b>BIONETIC ENHANCEMENT CENTER</b> 10830 WELLNESS WAY, SUITE #120 ORLANDO, FL	<b>FLOOR FRAMING PROTECTION PLAN</b>
---	--------------------------------------

DRAWN	KL
CHECKED	
CAD FILE	A-1
PROJECT	

This item has been electronically signed and sealed by [Khanh Le - Florida, PE # 70935] on the Date and/or Time Stamp shown using a digital signature.	DRAWING NUMBER <b>A-7</b>
Printed copies of this document are not considered signed and sealed and the signature must be verified on any electronic copies.	DATE 8-25-20