

## Madani, Mo

---

**From:** Soto, Rolando <ROSOTO@broward.org>  
**Sent:** Thursday, April 20, 2023 2:55 PM  
**To:** Madani, Mo  
**Cc:** Parks, Bryan; mbeck@coconutcreek.net; Ryan Banyas - Coconut Creek FCO  
**Subject:** Toilet exhaust fan fires.  
**Attachments:** Bathroom fan code amendment.docx; FW: Ventilation Bathroom Fan Fires; Eutectic-TCO-Report-6b6-cleared-cleaned-January-2018-version (1).pdf; google search.docx

**[NOTICE] This message comes from a system outside of DBPR. Please exercise caution when clicking on links and/or providing sensitive information. If you have concerns, please contact your Knowledge Champion or the DBPR Helpdesk.**

Good afternoon Mr. Madani,

Is it too late to propose a code change for the 2023 FMC? Here is the issue.

A few weeks ago, the Fire Marshall and the Mechanical Chief Inspector for the City of Coconut Creek approached us. They had had several structure fires that were initiated by the failure of the toilet exhaust fan. In fact, the Consumer Product Safety Commission wrote a report on this matter in 2017, and a Google search shows that this issue is common in Florida. The Fire Marshall and the Chief Mechanical asked us if it was possible to propose code provisions to the Florida Building Commission to prevent this from happening; please see our proposal.

Respectfully,

Rolando Soto  
Mechanical Chief Code Compliance Officer  
Broward Co. Board of Rules and Appeals  
1 N University Dr. Suite 3500B  
Plantation Fl 33324  
954-765-4500  
<http://www.broward.org/CodeAppeals/Pages/Default.aspx>



STRONGER CODES MEAN SAFER BUILDINGS  
~ESTABLISHED 1971~

---

Under Florida law, most e-mail messages to or from Broward County employees or officials are public records, available to any person upon request, absent an exemption. Therefore, any e-mail message to or from the County, inclusive of e-mail addresses contained therein, may be subject to public disclosure.

# Draft

Bathroom fan code amendment.

202? Florida Building Code, Mechanical, ?th Edition

## SECTION 403 MECHANICAL VENTILATION

TABLE 403.3.1.1 MINIMUM VENTILATION RATES

| OCCUPANCY CLASSIFICATION               | OCCUPANT DENSITY #/1000 FT <sup>2</sup> <sup>a</sup> | PEOPLE OUTDOOR AIRFLOW RATE IN BREATHING ZONE, $R_p$ CFM/PERSON | AREA OUTDOOR AIRFLOW RATE IN BREATHING ZONE, $R_a$ CFM/FT <sup>2</sup> <sup>a</sup> | EXHAUST AIRFLOW RATE CFM/FT <sup>2</sup> <sup>a</sup> |
|--|--|---|---|---|
| Private dwellings, single and multiple |  |   |   |   |
| Toilet rooms and bathrooms g, i        | —  | —   | —   | 20/50 f   |

For SI: 1 cubic foot per minute = 0.0004719 m<sup>3</sup>/s, 1 ton = 908 kg, 1 cubic foot per minute per square foot = 0.00508 m<sup>3</sup>/(s · m<sup>2</sup>), °C = [(°F) -32]/1.8, 1 square foot = 0.0929 m<sup>2</sup>.

a. Based upon *net occupiable floor area*.

b. Mechanical exhaust required and the recirculation of air from such spaces is prohibited. Recirculation of air that is contained completely within such spaces shall not be prohibited (see Section 403.2.1, Item 3).

c. Spaces unheated or maintained below 50°F are not covered by these requirements unless the occupancy is continuous.

d. Ventilation systems in enclosed parking garages shall comply with Section 404.

e. Rates are per water closet or urinal. The higher rate shall be provided where the exhaust system is designed to operate intermittently. The lower rate shall be permitted only where the exhaust system is designed to operate continuously while occupied.

f. Rates are per room unless otherwise indicated. The higher rate shall be provided where the exhaust system is designed to operate intermittently. The lower rate shall be permitted only where the exhaust system is designed to operate continuously while occupied.

g. Mechanical exhaust is required and recirculation from such spaces is prohibited except that recirculation shall be permitted where the resulting supply airstream consists of not more than 10 percent air recirculated from these spaces. Recirculation of air that is contained completely within such spaces shall not be prohibited (see Section 403.2.1, Items 2 and 4).

h. For nail salons, each manicure and pedicure station shall be provided with a *source capture system* capable of exhausting not less than 50 cfm per station. Exhaust inlets shall be located in accordance with Section 502.20. Where one or more required source capture systems operate continuously during occupancy, the exhaust rate from such systems shall be permitted to be applied to the exhaust flow rate required by Table 403.3.1.1 for the nail salon.

i. Toilet/bathroom exhaust fans shall be thermally protected or controlled by a timer switch. Exception: Fans rated or listed for continued use.

# DRAFT

202? Florida Building Code, Residential, ?th Edition

## SECTION M1507 MECHANICAL VENTILATION

### **M1507.4 Local exhaust rates.**

*Local exhaust* systems shall be designed to have the capacity to exhaust the minimum air flow rate determined in accordance with Table M1507.4.

**TABLE M1507.4  
MINIMUM REQUIRED LOCAL EXHAUST RATES FOR ONE- AND TWO-FAMILY  
DWELLINGS**

| AREA TO BE EXHAUSTED            | EXHAUST RATES   |
|---------------------------------|---|
| Kitchens                        | 100 cfm intermittent or 25 cfm continuous                               |
| Bathrooms-Toilet Rooms <u>a</u> | Mechanical exhaust capacity of 50 cfm intermittent or 20 cfm continuous |

For SI: 1 cubic foot per minute = 0.0004719 m<sup>3</sup>/s.

- a. Toilet/bathroom exhaust fans shall be thermally protected or controlled by a timer switch. Exception: Fans rated or listed for continued use.

In 2017, the U. S. Consumer Products Safety Commission (CPSC) did an assessment on exhaust fan fires.

They said, "Staff searched the CPSC Injury or Potential Injury Incident (IPII) database for incidents involving exhaust fans for the 20-year period from January 1, 1997 to September 21, 2017. Staff identified 494 known incidents in that period related to permanently installed exhaust fans. The majority of these incidents occurred in residential bathrooms."

The results of this assessment pointed strongly toward exhaust fans as the culprit in causing fires.

*More than 75 percent (318/423) of the known incidents occurred in a bathroom or restroom. The most likely origin of the incident in these cases was the exhaust fan. The incidents ranged in severity from minor smoke to fire spreading through the structure. Of the 318 incidents that occurred in a bathroom or restroom, almost 80 percent (254/318) occurred in a residence.*

Consumer Product Safety Commission

See attached CPSC report.

## Madani, Mo

---

**From:** Beck, Michael <MBeck@coconutcreek.net>  
**Sent:** Tuesday, March 21, 2023 11:09 AM  
**To:** Soto, Rolando  
**Subject:** FW: Ventilation Bathroom Fan Fires

**Follow Up Flag:** Follow up  
**Flag Status:** Flagged

**From:** Banyas, Ryan <RBanyas@coconutcreek.net>  
**Sent:** Monday, March 20, 2023 3:38 PM  
**To:** Beck, Michael <MBeck@coconutcreek.net>  
**Cc:** 'BParks@broward.org' <BParks@broward.org>; rsoto@broward.org  
**Subject:** Ventilation Bathroom Fan Fires

Good Afternoon,

Please see the 5 fires located in bathroom ventilation fans in Coconut Creek that I am aware of. There were two other fires that were undetermined fires that I did not include because the fire damage was too extreme to determine the cause to be the fan. It would be great to see all new fan installations requiring thermal couplings.

Barbershop 02/2013



Multifamily vacant unit 6/2014



Daycare facility 3/2023



Under Florida law, most e-mail messages to or from Coconut Creek employees or officials are public records, available to any person upon request, absent an exemption. Therefore, any e-mail message to or from the City, inclusive of e-mail addresses contained therein, may be subject to public disclosure.





# CPSC Staff Assessment on Eutectic-Type Thermal-Cutoff Fuse Failures in Shaded-Pole Motors Used in Exhaust Fans

December 2017

Arthur Lee  
U.S. Consumer Product Safety Commission  
Directorate for Engineering Sciences  
Division of Electrical Engineering and Fire Sciences  
5 Research Place  
Rockville, MD 20850

---

*The views expressed in this report are those of the CPSC staff and have not been reviewed or approved by, and may not necessarily reflect the views of, the Commission.*

---

Revision Changes

None

U.S. CONSUMER PRODUCT SAFETY COMMISSION  
Directorate for Engineering Sciences



CPSC Staff Assessment on  
Eutectic Type Thermal Cutoff Fuse Failures  
in Shaded-Pole Motors used  
in Exhaust Fans

December 2017

Arthur Lee  
Division of Electrical Engineering and Fire Sciences  
Directorate for Engineering Sciences

Akari Kumagai, Intern  
Division of Electrical Engineering and Fire Sciences  
Directorate for Engineering Sciences

Ryan Chan, Intern  
Division of Electrical Engineering  
Directorate for Laboratory Sciences

No Text on This Page

## EXECUTIVE SUMMARY

Staff searched the CPSC Injury or Potential Injury Incident (IPII) database for incidents involving exhaust fans for the 20-year period from January 1, 1997 to September 21, 2017. Staff identified 494 known incidents in that period related to permanently installed exhaust fans. The majority of these incidents occurred in residential bathrooms.

CPSC field staff collected 100 exhaust fan samples in 2017 from part of a larger inventory that had been collected and stored by a military base housing authority. The exhaust fans had been replaced base-wide due to a large number of failures. CPSC Engineering Sciences (ES) staff's testing of these motors showed that the winding temperatures can reach high temperatures sufficient to ignite the motor during a lock-rotor condition when the eutectic-type thermal cutoffs (TCO) fail to activate. ES staff conducted additional investigation to evaluate factors that may contribute to the TCO failing to activate. During locked-rotor operation, a TCO may reach elevated temperatures while remaining below its functioning temperature. These elevated temperatures may result in thermally aging the TCO, potentially altering its set functioning temperature. A fan that has entered into a lock-rotor condition may experience multiple events of thermal heating without causing the TCO to activate. These multiple heating events may have compounding effects on the TCO properties, thus causing either a delay in TCO activation or a failure to activate.

Even though the tested motors were listed to the appropriate voluntary UL standards, CPSC staff testing suggests that, in practice, thermal aging of the motors can cause the eutectic-type TCOs to fail. A contributing factor to this deviation from the original certification may be improper bending of the TCO wire leads, resulting in cracking the epoxy seal around the wire leads. During thermal heating, the melting properties of the thermal linkage in the TCO may be altered and cause either a delay in TCO-activation or failure to activate. If the TCOs in the motors fail to activate during a lock-rotor condition, the motor may overheat and ignite.

The results of this testing, and the fact that TCOs are used in many other consumer products, in addition to exhaust fans, support changes to the voluntary standards.

## Table of Contents

|  |    |
|--|----|
| EXECUTIVE SUMMARY .....  | v  |
| 1.0 INTRODUCTION.....  | 1  |
| 2.0 INCIDENTS .....  | 1  |
| 2.1 Incidents.....   | 1  |
| 2.2 Selected Incident Cases .....  | 3  |
| 2.3 Incident Bathroom Exhaust Fans.....  | 7  |
| 3.0 RECALLS INVOLVING THERMAL PROTECTION.....                                      | 8  |
| 4.0 VOLUNTARY STANDARDS .....  | 9  |
| 5.0 FIELD SAMPLES.....   | 11 |
| 5.1 Eutectic-Type Thermal Cutoff Fuses .....                                       | 11 |
| 5.2 Thermal Cutoff Fuses in the Fan Samples.....                                   | 13 |
| 5.3 Normal Fan Test.....   | 14 |
| 5.4 Abnormal Fan Test.....   | 16 |
| 5.5 Lock-Rotor Test with TCO Bypassed .....  | 19 |
| 5.6 TCO Trip-Time Testing.....   | 20 |
| 5.6.1 Test Groups 1 and 2 - Lock-Rotor Test (15 fans per group).....               | 22 |
| 5.6.2 Test Group 3 - 105°C Variable Duration Conditioning and Lock-Rotor Test..    | 22 |
| 5.6.3 Test Group 4 - 105°C 165 Hours Conditioning and Lock-Rotor Tests.....        | 33 |
| 5.6.4 Test Group 5 - 105°C 330 Hours Conditioning and Lock-Rotor Tests.....        | 36 |
| 6.0 Analysis of the Special Compound (Flux) and Solder Link .....                  | 47 |
| 7.0 Bending and Forming TCO Leads (Design Applications - Forming and Cutting)..... | 51 |
| 8.0 Discussion .....   | 55 |
| 9.0 Conclusion.....  | 57 |

## List of Figures

|   |    |
|---|----|
| Figure 1. Fan assembly for “box” type housing .....   | 7  |
| Figure 2. Shaded-pole motor.....  | 8  |
| Figure 3. Identifying T.P. or Z.P.....  | 8  |
| Figure 4. Eutectic system model.....  | 12 |
| Figure 5. Eutectic-type thermal fuse.....   | 12 |
| Figure 7. Smooth and uniform solder linkage (Sub 44).....                                     | 13 |
| Figure 8. Fusible link with irregular thermal linkages (Sub 91, 20 and 62).....               | 14 |
| Figure 9. Thermocouple locations on the motor (side view) .....                               | 15 |
| Figure 10. TCO with thermocouple .....  | 15 |
| Figure 11. Temperature measurements on the winding and within the TCO (Fan 60) .....          | 16 |
| Figure 12. Sub 45 with dust and surface rust on core.....                                     | 17 |
| Figure 13. Sub 45 temperature measurement outside the winding.....                            | 17 |
| Figure 14. Radiograph and CT scans of the TCO before and after lock-rotor testing (Sub 45)... | 17 |

|  |    |
|--|----|
| Figure 15. Radiographs of TCOs after lock-rotor testing with consistent shape.....           | 18 |
| Figure 16. Radiographs of TCOs after lock-rotor testing with unusual shapes.....             | 18 |
| Figure 17. Temperature on the winding and within the TCO during a lock-rotor test.....       | 19 |
| Figure 18. Sub 42 third test period Lock-Rotor Test with no TCO.....                         | 20 |
| Figure 19. Bypassed TCO lock-rotor test.....   | 20 |
| Figure 20. Large test frame and setup for up to 15 fans.....                                 | 21 |
| Figure 21. Smaller test frame and setup for up to 2 fans.....                                | 22 |
| Figure 22. Thermal linkages before and after conditioning.....                               | 25 |
| Figure 23. Temperature traces for Sub 10 Test Group 3 - Lock-Rotor Test.....                 | 26 |
| Figure 24. CT scan of the fusible link after lock-rotor testing (sub 10).....                | 27 |
| Figure 25. Temperature traces for Sub 41 Test Group 3 - Lock-rotor Test.....                 | 27 |
| Figure 26. Temperature traces for Sub 41 Test Group 3 - Lock-Rotor Test on July 5, 2017..... | 28 |
| Figure 27. Sub 41 Test Group 3 - Lock-Rotor Test producing smoke and post examination.....   | 28 |
| Figure 28. TCO from Sub 41 after Lock-Rotor Test.....  | 29 |
| Figure 29. Temperature for Sub 64 Test Group 3 during Second Lock-Rotor Test.....            | 30 |
| Figure 30. Solder bead on TCO lead from Sub 64 after second Lock-Rotor Test.....             | 30 |
| Figure 31. Microscopic images of the solder bead and solder in the cracks (Sub 64).....      | 30 |
| Figure 32. CT scans of the TCO showing the solder bead (Sub 64).....                         | 31 |
| Figure 33. Segment Part A and B temperatures for Sub 99 Test Group 3 - Lock-Rotor Test.....  | 32 |
| Figure 34. Segment part C temperature traces for Sub 99 Test Group 3 - Lock-Rotor Test.....  | 32 |
| Figure 35. CT scans of the TCO showing the solder bead (Sub 99).....                         | 32 |
| Figure 36. Microscopic images of the solder bead and solder in the cracks (Sub 99).....      | 33 |
| Figure 37. Temperature traces for Test Group 4 - Lock-Rotor Test.....                        | 34 |
| Figure 38. Temperature traces for Subs 6, 7, 12 and 13 (Test Group 4 - Lock-Rotor Test)..... | 35 |
| Figure 39. Radiograph of subs 6, 51, 58 and 66 after Lock-Rotor test.....                    | 35 |
| Figure 40. Winding temperatures during lock-rotor test for Fan sub 73.....                   | 38 |
| Figure 41. Fan sub 73 during lock-rotor test.....  | 39 |
| Figure 42. Radiograph of the TCO after the test (sub 73).....                                | 40 |
| Figure 43. CT scans of the TCO before conditioning (sub 73).....                             | 41 |
| Figure 44. Winding temperatures during lock-rotor test for Fan sub 23.....                   | 42 |
| Figure 45. Fan sub 23 during lock-rotor test.....  | 43 |
| Figure 46. Radiograph of the TCO after the test (sub 23).....                                | 44 |
| Figure 47. CT scans of the TCO before conditioning (sub 23).....                             | 44 |
| Figure 48. Winding temperatures during lock-rotor test for Fan sub 54.....                   | 45 |
| Figure 49. Radiograph of the TCO after the test (sub 54).....                                | 46 |
| Figure 50. Radiograph of the TCO before and after the test (sub 54).....                     | 46 |
| Figure 51. CT scans of the TCO after the test (sub 54).....                                  | 47 |
| Figure 52. TCO solder link from Fan subs 22 and 59 (conditioned 330 hours @ 105°C).....      | 48 |
| Figure 53. TCO solder link from Fan subs 74 and 85 (no conditioning).....                    | 48 |
| Figure 54. Close-up images of the TCO solder link (conditioned 330 hours @ 105°C).....       | 49 |
| Figure 55. Close-up images of the TCO solder link (no conditioning).....                     | 49 |
| Figure 56. SEM scans for Sub 59.....   | 50 |
| Figure 57. SEM scans for Sub 74.....   | 51 |
| Figure 58. Wire bend lengths vary between TCOs in the Fan samples.....                       | 55 |
| Figure 59. Potential thermal aging of the motor between normal and TCO trip conditions.....  | 56 |

## List of Tables

|   |    |
|---|----|
| Table 1. Dataset from January 1, 1997 to September 21, 2017 .....                         | 2  |
| Table 2. Bathroom/Restroom incidents .....  | 2  |
| Table 3. Shaded-pole motors .....   | 8  |
| Table 4. Sample Test Group .....  | 21 |
| Table 5. Conditioning periods for Test group 3 subs.....                                  | 23 |
| Table 6. Test Group 3 - 105°C Conditioning and Lock-rotor Test Data .....                 | 25 |
| Table 7. Segment lock-rotor testing (Sub 99) .....  | 31 |
| Table 8. Test Group 4 - 105°C Conditioning and Lock-Rotor Test Result .....               | 33 |
| Table 9. Test Group 5 – Conditioning 330 hours at 105°C and Lock-Rotor Test Results ..... | 36 |
| Table 10. Distance between the seal and the wire lead bend.....                           | 54 |



## 1.0 INTRODUCTION

ES staff conducted an analysis of thermal cutoff fuse TCO failures in exhaust fan applications, specifically for fans that use eutectic-type thermal devices in shaded-pole motors. This report documents staff's analysis and assessment.

## 2.0 INCIDENTS

The CPSC's IPII database includes information on consumer product-related incidents that are collected through various reports and reporting systems.<sup>1</sup> The amount of information or detail can vary by the type of report. News reports typically contain minimal detail on the products and the events surrounding the incident. CPSC field investigators conduct In-Depth Investigations (IDIs) on specific incidents that may have originated from an IPII record. These investigations are conducted by CPSC field staff via phone or in-person interviews, and the investigations can include collection of police and injury reports. The investigation is documented in a report that typically contains detailed information on the products and events surrounding the incident, but the completeness of the reports depends on the information that the field investigator was able to collect.

### 2.1 Incidents

CPSC staff searched the IPII database for incidents involving exhaust fans, specifically the product code 380 (fans) that mentioned the word "exhaust" and indicated a fire or fire hazard. The search is not representative of any national statistics or estimates. The search produced 571 incidents occurring between January 1, 1997 and September 21, 2017. Staff reviewed the search results; 77 of the incidents did not relate to structurally or permanently installed exhaust fans. The remaining 494 incidents contained sufficient information to determine that the incident involved a structurally or permanently installed exhaust fan. Of the 494 incidents 118 IDI reports resulted.

Of the 494 incidents with structurally or permanently installed fans, 71 incidents did not contain sufficient information to determine the exhaust fan's purpose. For example, staff could not determine in what room the fan was installed or for what purpose the fan was used. The remaining 423 incident reports contained sufficient information to determine the location of the exhaust fan and the likely use of the exhaust fan. The 423 incidents were categorized into five categories based on fan location (bathroom/restroom, kitchen, attic, laundry, and general). Incidents categorized as "general" involved locations that could not be assigned to one of the specific location categories. Table 1 lists the number of exhaust fan incidents by location.

---

<sup>1</sup> The incidents are gathered from news reports, consumer self-reporting, Medical Examiners and Coroners Alert Program (MECAP), attorney reports, referrals, and Section 15 reports.

Table 1. Dataset from January 1, 1997 to September 21, 2017

| Incident Categories by Location         | Count | Percent of Known |
|---|-------|------------------|
| Bathroom/Restroom                       | 318   | 75.18%           |
| Kitchen                                 | 54    | 12.77%           |
| Attic                                   | 27    | 6.38%            |
| Laundry                                 | 8     | 1.89%            |
| General                                 | 16    | 3.78%            |
| Known incidents only                    | 423   | 100%             |
| Unknown                                 | 71    |                  |
| Total Incidents related to exhaust fans | 494   |                  |

More than 75 percent (318/423) of the known incidents occurred in a bathroom or restroom. The most likely origin of the incident in these cases was the exhaust fan. The incidents ranged in severity from minor smoke to fire spreading through the structure. Of the 318 incidents that occurred in a bathroom or restroom, almost 80 percent (254/318) occurred in a residence. “Residences” were defined as a single- or multi-family home, apartment, condominium, senior citizen living facility, and dormitory. Of the 318 incidents that occurred in a bathroom/restroom, almost 19 percent of incidents occurred in a commercial building. “Commercial facilities” were defined as a commercial store or workplace, public facility, restaurant, or hotel. There was insufficient information for four incidents, which were classified as Unknown. Table 2 lists the types of structures for incidents that occurred in a bathroom or restroom.

Table 2. Bathroom/Restroom incidents

| Type of location       | Count | Percent of Total |
|------------------------|-------|------------------|
| Residential            | 254   | 79.9%            |
| Commercial             | 60    | 18.9%            |
| Unknown                | 4     | 1.2%             |
| Bathroom dataset total | 318   | 100%             |

Almost 13 percent of the known incidents occurred in a kitchen. These incidents occurred in either a residential or commercial structure, such as a home or restaurant. The exhaust fans that were involved in these incidents appear to have been mostly used to exhaust the area above or near a cooking appliance. For residential incidents, the exhaust fan may have been integral to a microwave oven/hood or a range hood. For commercial locations, the exhaust fan incidents appear to be related to inadequate maintenance of the exhaust hood, such as excessive grease from cooking. For commercial locations, there were several incidents where the exhaust fans were used to exhaust the space above cooked food or the kitchen area.

There were 27 incidents involving attic fans. These incident reports specifically contained descriptions that the products were attic exhaust fans that were used to ventilate

the air within the attic and not bathroom exhaust fans mounted in the ceiling where there was attic space above the ceiling. These incidents occurred in both residential and commercial structures.

There were eight incidents involving exhaust fans in laundry rooms. These incident reports specifically contained descriptions that the exhaust fans were in laundry-type rooms that were used to wash and dry clothes. These incidents occurred in both residential and commercial structures.

There were 16 incidents involving exhaust fans that were categorized as “general” because the rooms in which these incidents occurred did not fall into any of the other categories. These incidents occurred in rooms such as sheds, factory rooms, medication rooms, basements, or dining rooms.

There were 77 incidents that were not within scope of the report. Some of the “not-within-scope” incidents involved cooking fires that ignited exhaust fans, heater fans, window fans, portable product fans, such as leaf blowers, and HVAC fans.

## 2.2 Selected Incident Cases

The incidents below, which involved exhausts fan in a bathroom or restroom, were selected to illustrate some of the differences and similarities in the incidents.

### IDI 90611CCN0306

This incident occurred in a 10-year-old duplex/multi-family home in May 1998. On the day of the incident, the consumer was home and turned on the bathroom exhaust fan located on the ceiling. The family left the home around 2:00 p.m. and left the bathroom exhaust fan running for about seven (7) hours until the family returned around 9:00 pm. Upon returning, the family heard the smoke alarm sounding and witnessed smoke in the home. The family called the fire department, which determined that the bathroom exhaust ceiling fan had overheated, causing the plastic cover to catch fire and fall onto the toilet. The toilet seat cover had ignited, which fell into the toilet.

### IDI 010402CCN474

In March 2001, at about 6:50 a.m. the fire department responded to an apartment structure fire. Firefighters discovered fire in the walls and the attic above the bathroom where the incident exhaust fan was located. Fire had spread into the common bathroom wall between apartment units and in the adjacent bedroom walls. The fire department determined that the fire started from a 30-year-old exhaust fan located in the bathroom of the apartment.



#### IDI 031125CNE1123

The incident occurred in November 2003. The day before the incident, the bathroom exhaust fan was left “on.” On the morning of the incident, the family dog began running in and out of the bathroom and barking. Shortly thereafter, a smoke alarm located in the hallway outside the bathroom began sounding. The family observed smoke and flames coming from the bathroom exhaust fan. The fire marshal concluded that the fan motor overheated and determined that the home insulating material in the attic was not a contributing factor in the fan overheating because there was adequate space between the insulation and the fan housing.

#### IDI 050506CNE2395

The fire occurred in a women’s restroom of a closed nightclub section of a bar and restaurant business. An adjacent bar restaurant section was open for business and occupied by a bartender and several customers at the time of the incident. The owner indicated that even though the nightclub section had been closed, employees routinely used the bathrooms in that area. The men’s and women’s restrooms located in the nightclub were equipped with exhaust fans. The manager of the business reported that the fan in the women’s restroom had been making a noise for about a week before the incident. At the time of the incident, the fire department extinguished the fire, which had traveled upward from the women’s restroom into the second floor and attic, where it burned through parts of the roof.

#### IDI 050907CNE2758

On a morning in August 2008, the electricity in the residence and surrounding area had a power outage. After power had been restored in the afternoon, the occupants went throughout the home checking the light switches. This included the two switches in the second floor bathroom, which controlled the lights and incident exhaust fan. The occupants stated that the exhaust fan had “stopped” working about 3 years before the incident. Before the fan “stopped” working, the occupants reported that the exhaust fan had begun to make a noise. Before leaving the home, the occupant went around turning off

the lights in the home, which they thought the second floor bathroom fan had been turned off. When they returned home in the evening, the homeowner found smoke coming from the roof vents of the structure. The fan had overheated and ignited and spread into the attic of the structure.

IDI 110322CCC2391

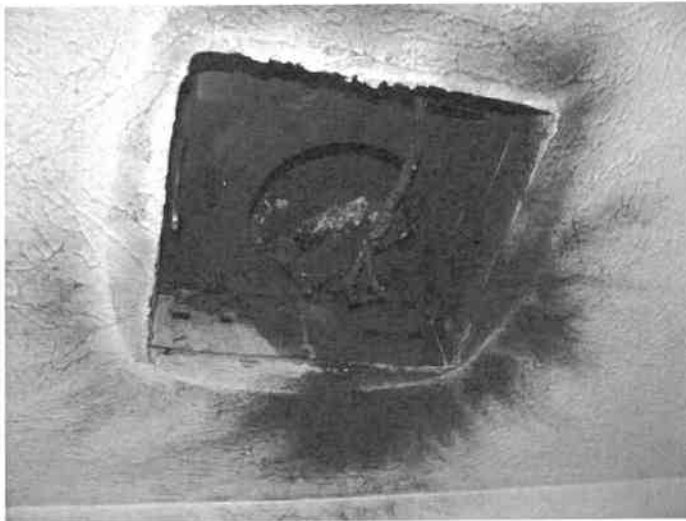
The incident occurred at a daycare facility. The building was built in 1995, and has been used as a daycare facility since its construction. The fans were original when the building was constructed. The lights and fans were controlled by a single switch. Five days a week, the switch was turned on at approximately 6:30 a.m. and turned off at about 7:00 p.m. The incident occurred in March 2011. After the daycare lights and fans were switched on, the daycare heat was also turned on. Approximately 1 hour later, a teacher and her assistant smelled something burning and assumed it was related to the heating system. Even though after the heating system was turned off, the burning smell persisted. The director went to the infant room and localized the burning smell to the changing room/bathroom. The director notified the owner of the daycare and was advised to disconnect the exhaust fans because they were old. The director was unplugging the exhaust fan when a “large fireball shot out” of the exhaust fan. The daycare was evacuated and the fire department was summoned to extinguish the fire.



IDI 130208CCC3391 and IDI 130326HWE0001

On two separate occasions, incidents involving bathroom exhaust fans occurred at Picerne Military Housing located on Ft. Riley Military Base, KS. The first incident occurred in June 2012, and was documented under IDI 130326HWE0001. The second occurred in February 2013, and was documented under IDI 130208CCC3391. The fans were installed sometime since 2007, when the housing construction was initiated. The housing authority stated that the same type of exhaust fans were installed in all the military homes constructed during that period. The housing authority reported that the fan motors had been seizing up. Because of this, the housing authority discontinued installing them in the homes in 2013, and removed all of the exhaust fans.

The June 12 incident occurred in a half bath in a single-family home. The Fort Riley Fire Department was dispatched to a structure fire at the residence. Upon arrival, the fire responders did not witness any signs of fire outside the home. Fire personnel entered the home to investigate and found water pouring from the first floor bathroom exhaust fan on the ceiling. The fire had been extinguished before fire fighters entered the home. The report identified that the plastic inside the fan had ignited, which then ignited the plastic vent hose. A plastic water line located above the fan had melted, which extinguished the fire. The cause of the incident was an overheated exhaust fan.

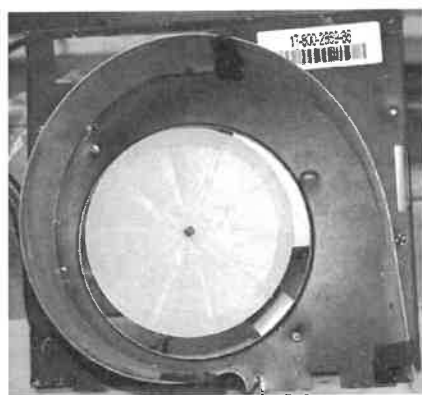


The February 5 incident occurred in a full bath on the second floor of a single-family home. There was extensive damage to the attic above the bathroom. The field investigator noted that the incident fan switch was in the “up” position, suggesting that the fan was on when the incident occurred. When the fire department arrived at the scene, fire personnel determined that the fire had spread into the attic area. An overheated exhaust fan caused the incident.

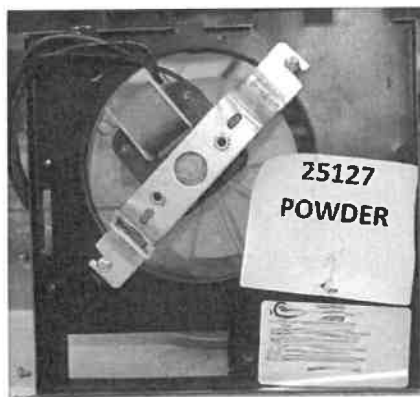


### 2.3 Incident Bathroom Exhaust Fans

The majority of the incidents (75 percent, 318/423) involved bathroom/restroom exhaust fans. Where photographs were available, the fans appear to have similar construction. The exhaust fans contain an external housing, a motor, an impeller, and a grill cover. The exhaust fans may incorporate a light option, but the incidents did not report the lighting assembly as the cause of the incident or fire. The “box” type exhaust fans contain a box housing that is mounted to the building structure. A fan assembly is mounted in the box housing. The fan assembly typically contains a mounting frame, fan motor, impeller, and power cord as shown in Figure 1. The box housing contains the electrical connections for the fan and light option and connection for the ducting.



Top of the exhaust fan assembly



Bottom of the exhaust fan assembly

Figure 1. Fan assembly for “box” type housing

A shaded-pole motor is an AC single-phase induction motor. The auxiliary winding, which is composed of a copper ring, is called a shading coil. The current in shading coil delays the phase of magnetic flux to provide a rotating magnetic field. The direction of rotation is from the unshaded side to the shaded ring. Typical components of a shaded pole-type motor are shown in Figure 2. Since these motors typically have low starting torque, low efficiency and a low power factor, these motors are typically suitable for low-power applications and are either thermally or impedance protected to prevent overheating. The type of protection can be identified by “T.P.” or “Z.P.” on the motor label, as shown in Figure 3. A Z.P. motor relies solely upon the impedance of the windings alone to prevent overheating; whereas, a T.P. motor relies upon a thermal protective device to prevent overheating.

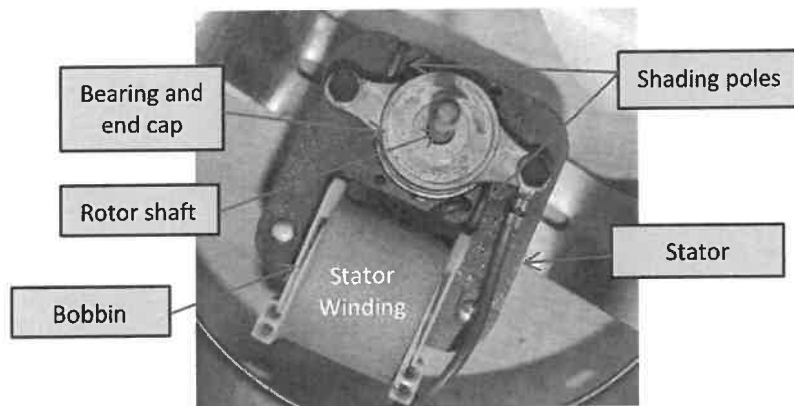


Figure 2. Shaded-pole motor

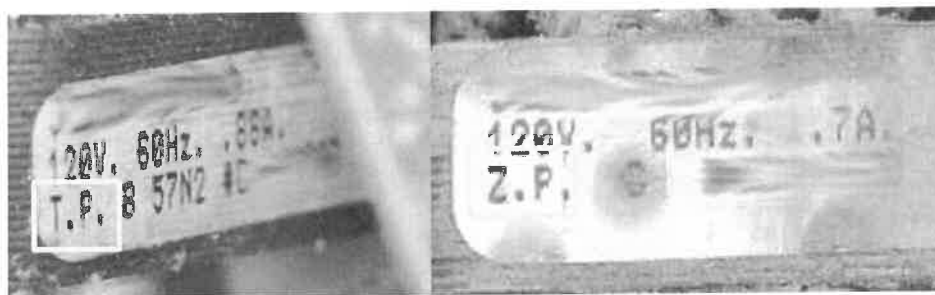


Figure 3. Identifying T.P. or Z.P.

Staff reviewed the IDIs to identify the types of fan motors used in the incidents. The dataset consisted of 118 IDIs. Of the 118 IDIs, 60 IDIs contained images of the incident exhaust fan. Of the 60 IDIs, 57 IDIs had sufficient information to identify the fan motor as a shaded pole-type motor. Three of the fans were not shaded pole-type motors; these were attic exhaust fans and appeared to be universal-type motors. Fifty-nine IDIs did not contain any identifiable information to determine the type of fan motor. Table 3 lists the number of identifiable shaded pole-type fan motors in the 118 IDIs.

Table 3. Shaded-pole motors

|                         | Motor type count | Percentage of known |
|-------------------------|------------------|---------------------|
| Shaded pole motor       | 57               | 95 %                |
| Not shaded pole motor   | 3                | 5 %                 |
| Identified motor type   | 60               | 100 %               |
| Unidentified motor type | 58               |                     |
| Total IDIs              | 118              |                     |

### 3.0 RECALLS INVOLVING THERMAL PROTECTION

Consumer products with thermal protection have failed in the past. The most notable product recalls due to thermal protection failures in a consumer product occurred about 25 years ago involving drip coffeemakers. Beginning in the early 1990s, CPSC announced several recalls from different manufacturers of coffeemakers, where the thermostats and/or



thermal fuses malfunctioned, thus, causing an overheating condition and a potential fire hazard.<sup>2</sup> The recalls involved more than 1 million coffeemakers.

Because of the recalls and coffeemaker fire incidents, CPSC staff discovered that the thermal devices used in these products can have the set point drift higher, or not function at all. Staff believed that thermal aging and/or heating of the thermal devices was causing the contact force to be reduced until the pressure between the contacts within the thermal device was nearly zero.<sup>3</sup> The episode resulted in Underwriters Laboratories (UL) incorporating construction and performance changes in the appropriate voluntary standards to address thermal devices used in coffeemakers. One of the new test methods was the “Conductive Heat Ageing Test” (CHAT), which represented slow aging of the thermal device under load, while mounted directly to a heated surface. This and other proposed requirements in UL 1082, *Standard for Household Electric Coffee Makers and Brewing-Type Appliances*, became effective in 1993 and 1994.

#### 4.0 VOLUNTARY STANDARDS

Through collaboration with UL, a voluntary standard organization, safety standards are developed for a variety of consumer products, including exhaust fans. In many cases, these standards bring industry groups, government agencies, and consumer groups together to agree on the best consumer product safety practices. These standards have helped lead the way toward the development of safer consumer products.

Safety standards are constantly evolving and improving to adjust to the environmental changes, behavioral use, and technology. Below is a list of UL standards that may apply currently to exhaust fans or may have applied to exhaust fans in the past, but are no longer current:

##### UL 507, Standard for Electric Fans

UL 507 is intended to cover a large assortment of fan types, including exhaust fans. Exhaust fans are categorized as fans for use in unattended areas. These fan products are built into or within the building structure and may be operated unattended or in situations in which the operator may not detect a lock-rotor condition.

---

<sup>2</sup> <https://www.cpsc.gov/Recalls/1990/Proctor-Silex-Voluntarily-Recalls-Certain-Automatic-Drip-Coffeemakers-Made-In-198586-That-May-Pose-Fire-Hazard/>; <https://www.cpsc.gov/Recalls/1991/General-Electric-Voluntarily-Recalls-Certain-Drip-Coffeemakers-That-May-Pose-A-Fire-Hazard/>; <https://www.cpsc.gov/Recalls/1994/750000-1984-To-1988-Black-Decker-And-General-Electric-Under-The-Cabinet-Coffeemakers-Recalled-Possible-Fire-Hazard>.

<sup>3</sup> *Temperature cutoffs (Thermal-links) for coffeemakers Extended Holding Temperature TH-100 rated TCOs*, InterControl. Hermann Köhler Elektrik GmbH & Co KG Schafhofstraße 30. 90411 Nuremberg, Germany.

### ANSI/UL 2111, UL Standard for Overheating Protection for Motors

ANSI/UL 2111 was withdrawn and superseded by three dedicated standards, UL 1004-2, *Standard for Impedance Protected Motors*, UL 1004-3, *Standard for Thermally Protected Motors*, and UL 60730-2-2, *Standard for Automatic Electrical Controls for Household and Similar Use; Part 2 Particular Requirements for Thermal Motor Protectors*, beginning in 2013.

### UL 1004-2, Standard for Impedance Protected Motors

UL 1004-2 is intended to be read with the *Standard for Rotating Electrical Machines – General Requirements*, UL 1004-1. The Standard applies to motors that rely solely upon the impedance of the motor windings to prevent overheating.

### UL 1004-3, Standard for Thermally Protected Motors

UL 1004-3 is intended to be read with the *Standard for Rotating Electrical Machines – General Requirements*, UL 1004-1. The Standard applies to motors that rely upon a device (thermal motor protector) to prevent overheating.

### ANSI/UL 1020, Standard for Thermal Cutoffs for Use in Electrical Appliances and Components

UL 1020 was withdrawn and superseded by UL 60691, *Thermal Links - Requirements and Application Guide* around 2003. The scope for ANSI/UL 1020 contained requirements that applied to thermal cutoffs intended to be embedded in windings or for freestanding use in end products.

### UL 60691, Thermal Links - Requirements and Application Guide

The scope for UL 60691 is applicable to thermal links intended for incorporation into electrical appliances, electronic equipment, and component parts thereof, normally intended for use indoors to protect these products from excessive temperatures under abnormal conditions, including lock-rotor conditions.

## 5.0 FIELD SAMPLES<sup>4</sup>

The two incidents that occurred at Picerne Military Housing on Ft. Riley, KS military base in 2012 and 2013 provided an opportunity to collect a large number of samples for testing. CPSC field staff collected 100 exhaust fan samples in 2017. The fans were part of a larger inventory that had been collected and stored by the base housing authority when the exhaust fans had been replaced after a large number of exhaust fan failures. The fans were originally installed in the homes between June 2007 to February 2012. The fans were removed between April 15, 2013 and April 22, 2013. All the fans had similar manufacture dates from 2008 through 2010.<sup>5</sup> After the units were removed, the fans were placed into storage, initially office trailers, then into Conex units on post.

All of the fans collected were sold under the same brand name and contained the same motor manufacturer. The fan motors were shaded pole-type motors and had the same or similar construction. The main lot (96) of fan motors were constructed with a paper wrap around the winding core and had 25 stacked plates for the stator. Four fan motors had a slightly different construction, which included a plastic wrap around the winding core and had 35 stacked plates for the stator. All of the fans were thermally protected with a radial eutectic-type TCO.

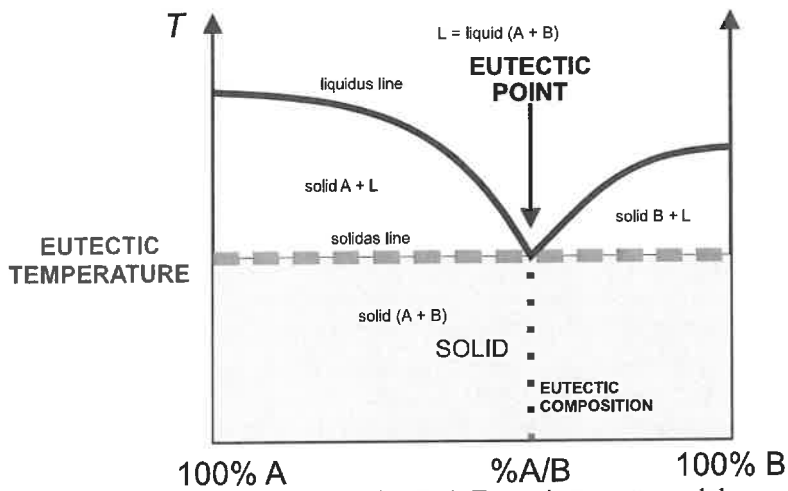
### 5.1 Eutectic-Type Thermal Cutoff Fuses

A eutectic alloy is a homogeneous solid mixture of at least two metals or lattice components that is made up of the specific atomic/molecular ratio that yields the lowest possible complete melting point (eutectic temperature), which causes the solid mixture to change uniformly into a liquid mixture, as illustrated in Figure 4. In all other proportions, the mixture will not have a uniform melting point; some of the mixture will remain solid and some liquid. Eutectic TCO fuses contain a joint or linkage that is a eutectic alloy that will melt and open at the eutectic temperature.

---

<sup>4</sup> The sections presented in this report were arranged for readability and understandability, not chronological order of the testing.

<sup>5</sup> The manufacturer date of the fan assembly does not necessarily represent the manufacture date of the fan motor. Staff believes that the fan motors were manufactured around 2000.



Eutectic TCOs are available with axial or radial lead wires, both having the same basic design as shown in Figure 5.<sup>6</sup> The fusible thermal linkage (thermal element) is a eutectic alloy that is welded across a pair of wire leads. The eutectic alloy is coated with a special compound to protect it from oxidation and allow wetting of the wire leads. Surface tension then separates the eutectic alloy, opening the circuit, thus activating the TCO. The fusible linkage is sealed in a special insulated housing.

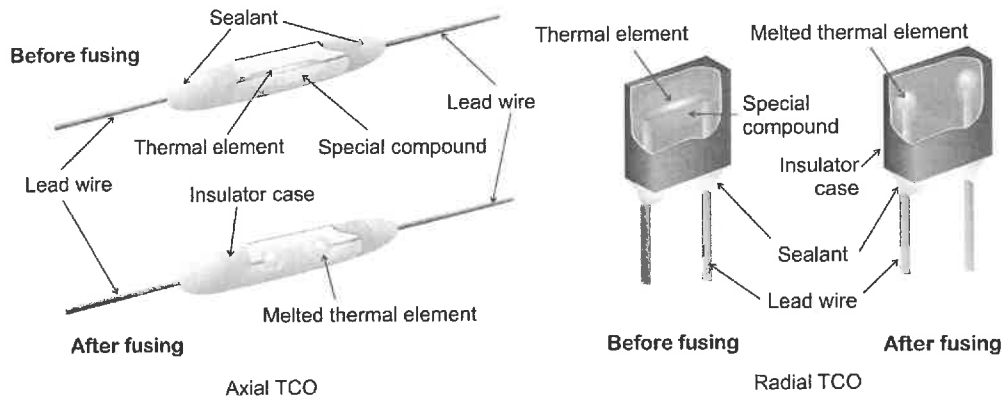


Figure 5. Eutectic-type thermal fuse

<sup>6</sup> Chatham Components Inc., Thermal Cutoffs, Elcut Brand Thermal Fuses, <http://www.cci-tco.com/products/elcut-brand-thermal-fuse/>.

## 5.2 Thermal Cutoff Fuses in the Fan Samples

All the fan samples contained radial eutectic-type thermal fuses. The fuses are marked with a functioning temperature of 136°C and rated for 250V 3A, as shown in Figure 6.

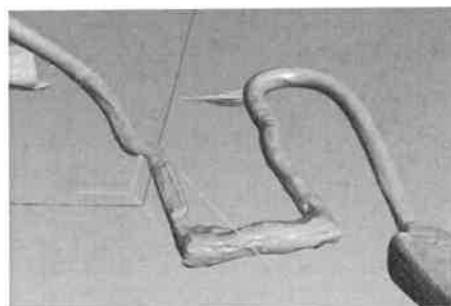


Figure 6. Radial eutectic-type thermal fuse in the sample fans

All 100 TCOs in the fans were x-rayed and 3-D imaged by computed tomography (CT). CT imaging can reveal detailed images of the internal TCO without destructive analysis. The CT scan allows cross-sectional details of the thermal linkage that cannot be seen in conventional radiographs by X-rays. The thermal linkage connects the two wire leads, as shown in the radiograph and CT images in Figure 7. In the examined thermal linkages in the fan samples, the thermal linkages varied with the shape of the linkage, such that some of the linkages were not uniform, as shown in Figure 8. It is unknown if the variations were caused from manufacturing or usage before collection.



Radiograph of the fusible link



CT scan of the fusible link

Figure 7. Smooth and uniform solder linkage (Sub 44)

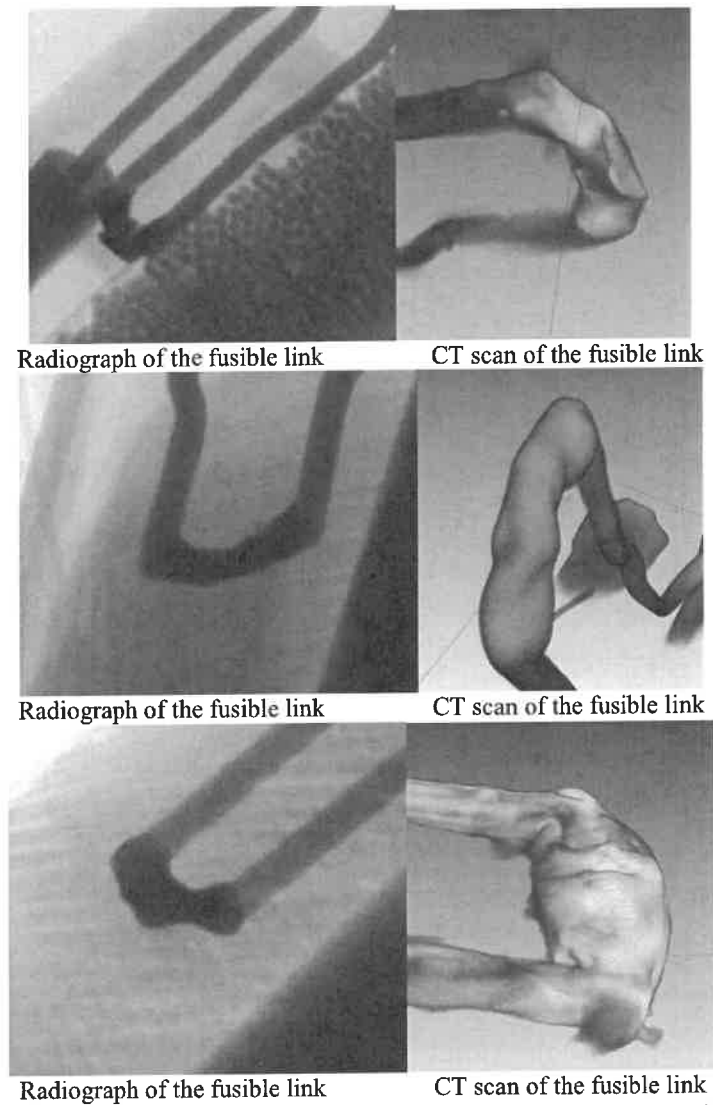


Figure 8. Fusible link with irregular thermal linkages (Sub 91, 20 and 62)

### 5.3 Normal Fan Test

Staff measured and recorded the temperatures on the winding and within the TCO for one of the shaded-pole, motor-fan samples during normal fan operation. To record the temperatures, a fan (indexed as sub 60) was instrumented with three thermocouples on the paper wrap exterior of the winding, and within the TCO, as shown in Figure 9; the TCO was not in the circuit, *i.e.*, it was not carrying current. The top, side, and bottom thermocouples were secured against the winding wrap with thermal tape and a nylon plastic tie. To measure the temperature within a TCO, an activated or used TCO from another fan motor was removed and then modified with a thermocouple. The TCO was modified by drilling a small hole through the epoxy of the TCO and inserting a thermocouple, as shown in Figure 10. The hole was then resealed with an epoxy. The existing TCO within the motor was moved away from the winding and the thermocoupled TCO was located in its place. This allowed the modified TCO with the thermocouple to

record the temperature as if the original TCO was installed. It would be expected that the thermocoupled TCO would measure a slightly lower temperature than an actual TCO because the lack of conductive heating from the winding and no current flow. The TCO plastic sleeve and winding wrap and tape were reinstalled and sealed before testing.

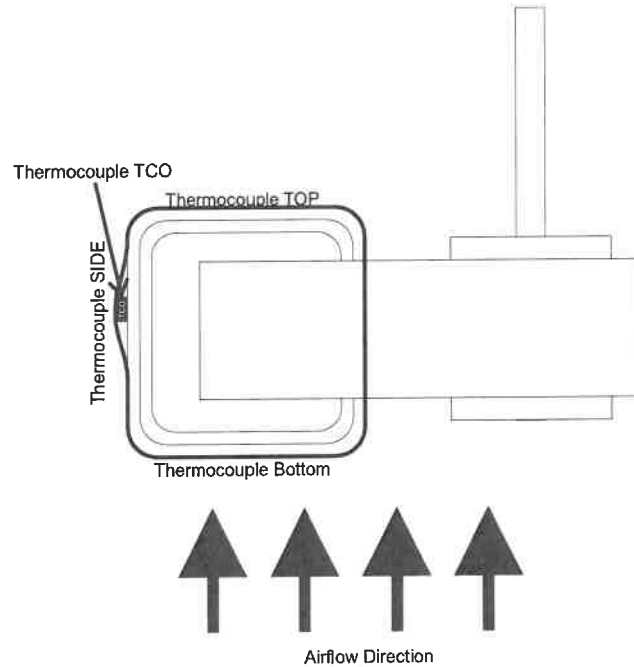
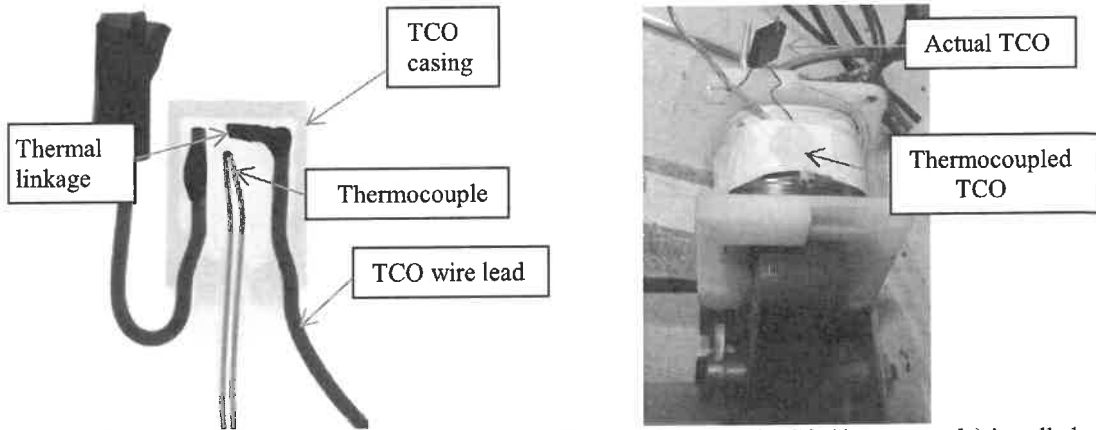


Figure 9. Thermocouple locations on the motor (side view)



Modified TCO with thermocouple      Actual TCO moved aside and TCO (thermocouple) installed  
 Figure 10. TCO with thermocouple

The testing showed that the TCO's internal temperature for this freely spinning motor with impeller is about 73°C. The thermocouple at the top of the winding measured slightly higher, at 76°C, than the TCO temperature as shown in Figure 11. When the fan was de-energized, the thermocouples located on the winding wrap measured an increase in the winding temperature because of the lack of airflow over the thermocouples when the

impeller stopped spinning. The temperature within the TCO did not measure the same increase in temperature when the fan was de-energized. This is most likely caused by the TCO being located below the wrap, which caused the TCO not to be affected by the airflow.

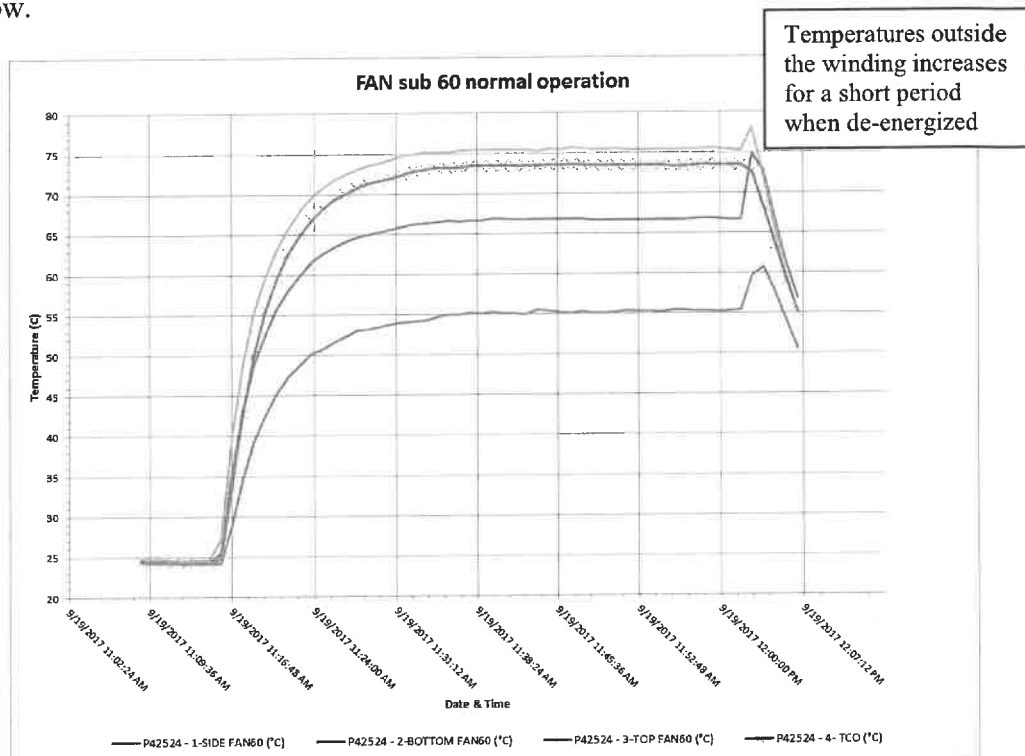


Figure 11. Temperature measurements on the winding and within the TCO (Fan 60)

#### 5.4 Abnormal Fan Test

Fan sub 45 rotor did not turn freely in the condition in which it was received because of what appears to be dust and grime build-up at the bearings. When the sample was energized, the impeller/rotor did not spin; thus, it was in “locked-rotor” condition. Figure 12 shows sub 45 before any testing.

The fan was tested in its as-received condition, *i.e.*, locked-rotor condition. A single thermocouple was placed on the side of the winding, on the outside of the wrap, adjacent to the TCO location. After being energized, the TCO activated after 22 minutes, as shown by the temperature traces in Figure 13. For the location of this thermocouple, the temperature shows a maximum of 120°C, but this location is about 20°C cooler than the actual TCO or at the top of the winding. The actual TCO functioning temperature ( $T_f$ ) was calculated to be about 140°C ( $120^\circ\text{C} + 20^\circ\text{C}$ ), which corresponds closely to the  $T_f$  of 136°C. This testing in lock-rotor condition also verified that the side thermocouple measurements on the paper wrap were about 20°C lower than the actual TCO or the top of the windings. Figure 14 shows the radiographs of the TCO’s fusible link after lock-rotor testing, which shows the thermal linkage melted or open.



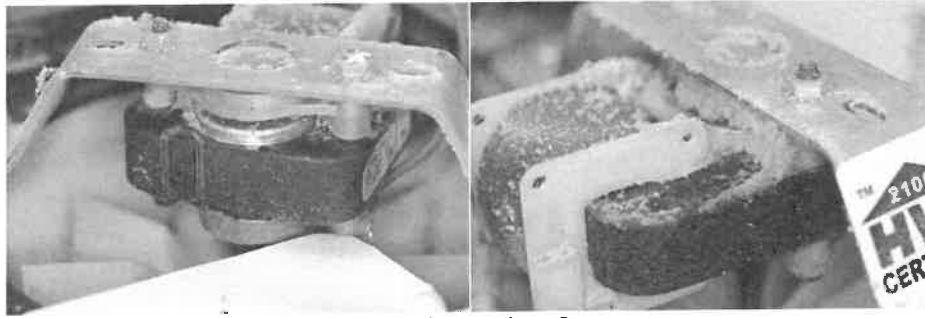


Figure 12. Sub 45 with dust and surface rust on core

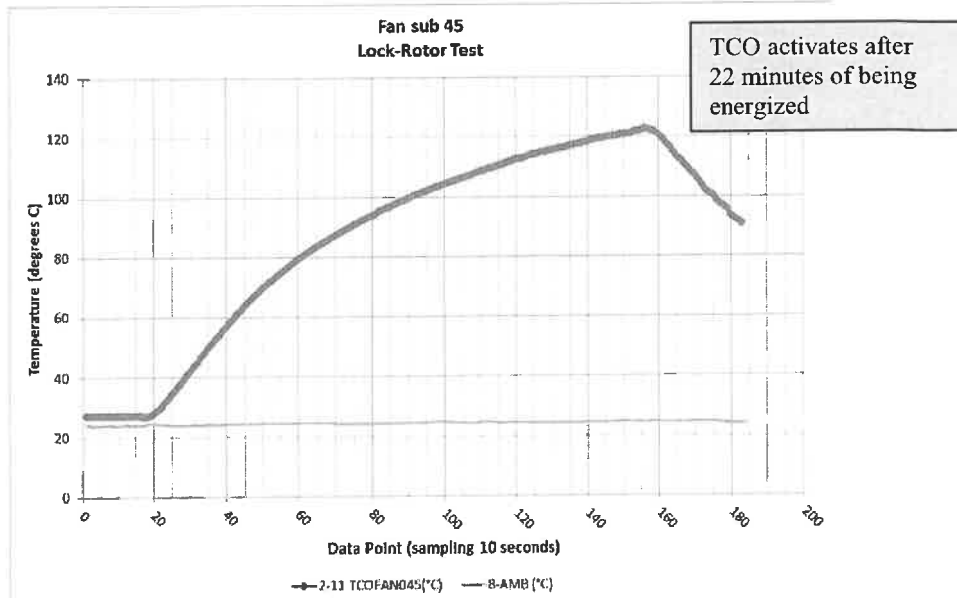


Figure 13. Sub 45 temperature measurement outside the winding

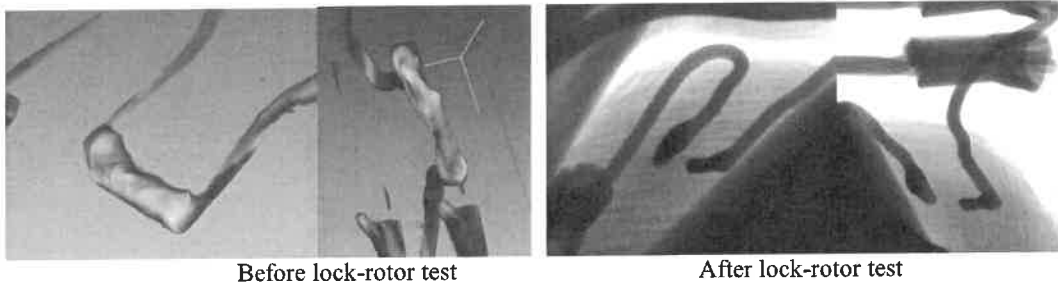
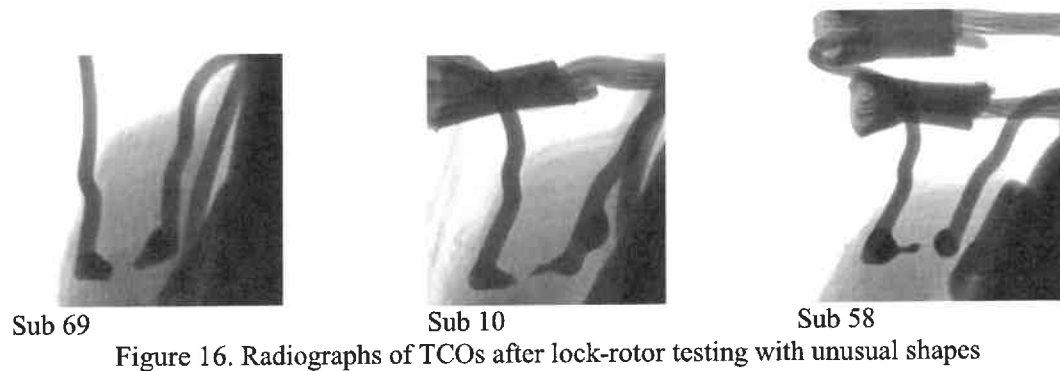
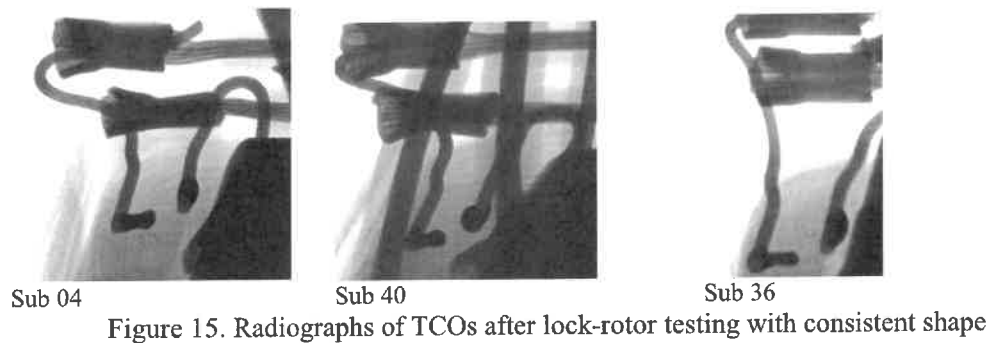


Figure 14. Radiograph and CT scans of the TCO before and after lock-rotor testing (Sub 45)

In other testing, where the TCO opened during lock-rotor conditions around the same elapsed time of 20 minutes, the thermal linkage had the same characteristic of only one end of the thermal linkage melting, as shown in Figure 15. This appeared to be caused by the TCO wire lead that is connected to the winding having a higher temperature than the wire lead connected to the power conductor. The wire lead would conduct the thermal energy from the winding during locked-rotor operation, thus causing one TCO wire lead to heat faster than the other TCO wire lead. Staff observed that for cases when the elapsed

time was longer during the lock-rotor condition for the TCO to trip, and the temperature was higher than average, the thermal linkage would have inconsistent melting patterns, as shown in Figure 16. Staff expected that the delayed opening would result in a uniform temperature gradient within the TCO, thus causing the fusible linkage to melt completely or uniformly. But this was not the case, because the thermal linkage had irregularities, which suggests that other factors may be affecting the melting characteristics of the linkage.



The same fan sub 60 that was instrumented with a thermocouple inside a TCO was used to measure the temperatures during lock-rotor conditions. Similar to the normal operation test, fan sub 60 had the three thermocouples on the paper wrap exterior of the winding and thermocoupled TCO. The lock-rotor condition was operated for 20 minutes to simulate the TCO tripping after 20 minutes in lock-rotor testing, as seen in Sub 45. After 9 minutes 12 seconds, the TCO temperature reached 105°C, as shown in Figure 17. At 15 minutes, the TCO temperatures reached 130°C. Shortly before 20 minutes, the TCO temperature reached 140°C. The TCO temperature measured approximately 142°C at 20 minutes or the manual trip time. The measurements in this test closely correspond to the sub 45 locked-rotor test. As mentioned previously, the TCO in sub 45 tripped at a measured temperature on the side of the winding around 120°C, and the temperature measured on the side of the winding in the test after 20 minutes of operation was about 123°C.

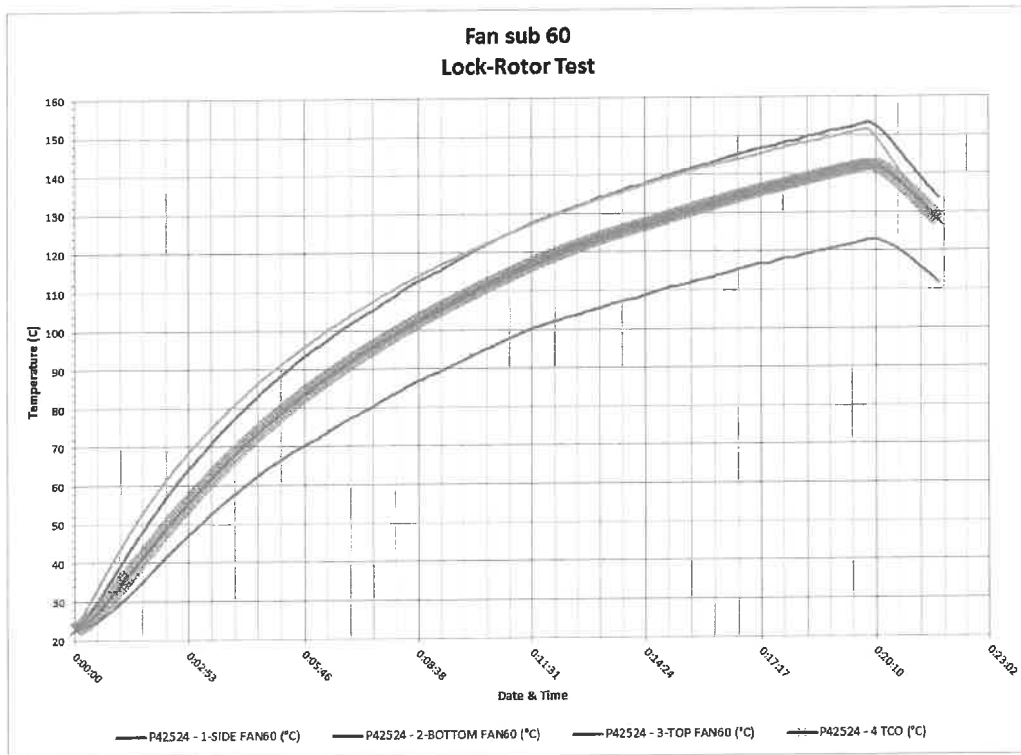


Figure 17. Temperature on the winding and within the TCO during a lock-rotor test

### 5.5 Lock-Rotor Test with TCO Bypassed

To evaluate worst-case scenario, fan sub 42, which had been previously tested in the lock-rotor test and the TCO tripped, was modified with the TCO bypassed. The tripped TCO was left intact in the motor, and a short piece of wire was soldered across the TCO wire leads to create a permanent linkage, thus bypassing the TCO. The test was to evaluate this motor if the TCO were to fail or not activate during a lock-rotor condition.

The fan was instrumented with a thermocouple located at the bottom of the winding, as viewed with the fan installed (see Figure 9 - Thermcouple BOTTOM). A second thermocouple was located exterior to the motor winding and on the same side as the TCO (see Figure 9 - Thermcouple SIDE). The lock-rotor test was conducted by blocking the impeller and energizing the fan. The thermocouple temperature measurements were recorded every 5 seconds.

The testing was conducted in three separate test periods. The first test period lasted 2 hours. The winding reached a steady-state temperature of 160°C. After an elapsed time of 2 hours, the test was manually terminated. The fan was allowed to cool to room temperature before re-testing. The second test period was 2 hours. The winding reached a steady-state temperature of 200°C. The test was manually terminated after 2 hours. The fan was allowed to cool to room temperature before re-testing.

For the third test period, the fan was energized in the lock-rotor condition, and after about 30 minutes, the temperature increased rapidly, which resulted in smoke and flames. The thermocouple temperature traces are shown in Figure 18. The motor winding ignited, which then ignited the plastic impeller, as shown in Figure 19. The plastic impeller resulted in dripping, flaming plastic. The total lock-rotor test time was about 4.5 hours (period 1 + period 2 + period 3).

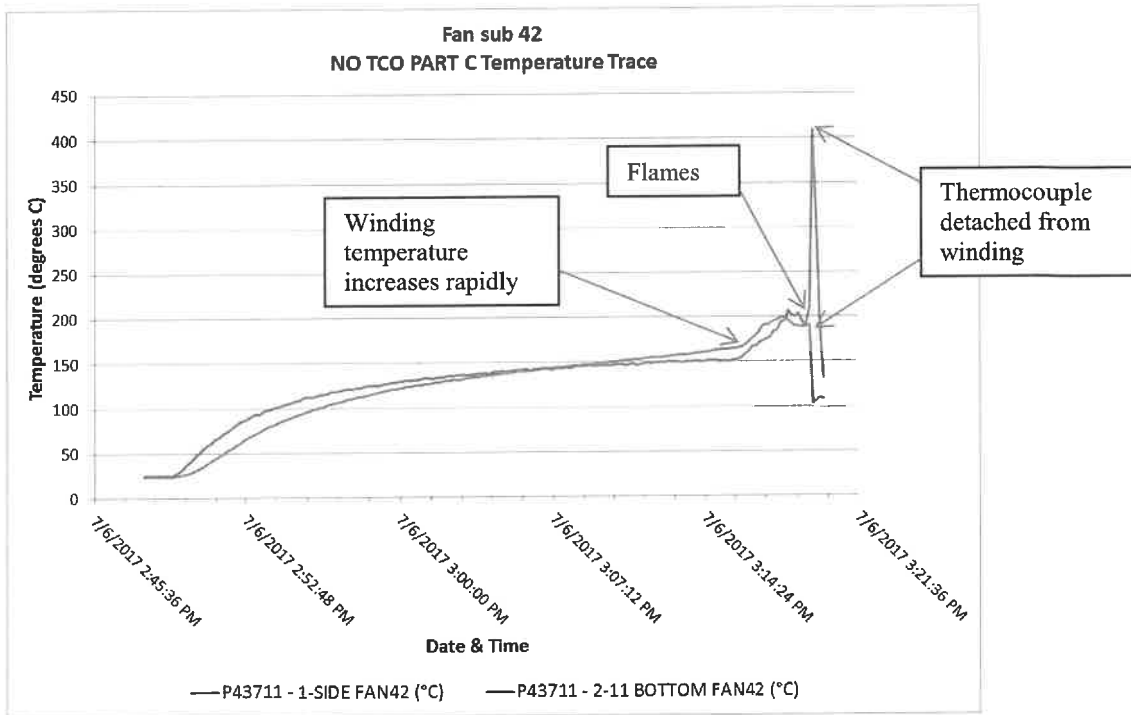


Figure 18. Sub 42 third test period Lock-Rotor Test with no TCO

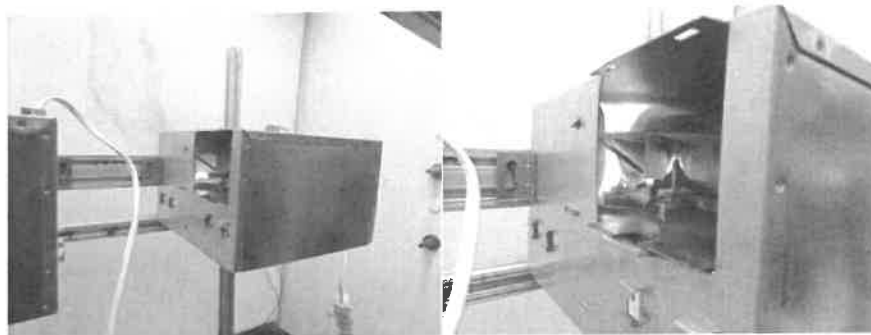


Figure 19. Bypassed TCO lock-rotor test

### 5.6 TCO Trip-Time Testing

The 100 samples that were collected from Picerme Military Housing on Ft. Riley, KS military base were randomly assigned to seven different test groups. Table 4 lists the fan motor subs as assigned to the seven test groups. Test groups 1, 2, 4, 5, and 6 had 15 fan samples. Test group 3 had 14 fan samples, and test group 7 had 11 fan samples.

Table 4. Sample Test Group

| Test Group 1 |         | Test Group 2 |         | Test Group 3 |         | Test Group 4 |         | Test Group 5 |         | Test Group 6 |         | Test Group 7 |         |
|--------------|---------|--------------|---------|--------------|---------|--------------|---------|--------------|---------|--------------|---------|--------------|---------|
| No.          | Sub No. | No.          | Sub No. | No.          | Sub No. | No.          | Sub No. | No.          | Sub No. | No.          | Sub No. | No.          | Sub No. |
| 1            | 60      | 1            | 53      | 1            | 39      | 1            | 81      | 1            | 46      | 1            | 72      | 1            | 91      |
| 2            | 80      | 2            | 83      | 2            | 71      | 2            | 45      | 2            | 22      | 2            | 38      | 2            | 8       |
| 3            | 98      | 3            | 4       | 3            | 64      | 3            | 11      | 3            | 57      | 3            | 61      | 3            | 74      |
| 4            | 13      | 4            | 95      | 4            | 75      | 4            | 28      | 4            | 37      | 4            | 97      | 4            | 86      |
| 5            | 70      | 5            | 40      | 5            | 3       | 5            | 67      | 5            | 48      | 5            | 96      | 5            | 31      |
| 6            | 78      | 6            | 12      | 6            | 30      | 6            | 58      | 6            | 23      | 6            | 25      | 6            | 65      |
| 7            | 52      | 7            | 88      | 7            | 55      | 7            | 66      | 7            | 50      | 7            | 24      | 7            | 18      |
| 8            | 27      | 8            | 16      | 8            | 42      | 8            | 9       | 8            | 33      | 8            | 34      | 8            | 85      |
| 9            | 36      | 9            | 26      | 9            | 99      | 9            | 17      | 9            | 14      | 9            | 32      | 9            | 21      |
| 10           | 69      | 10           | 20      | 10           | 19      | 10           | 84      | 10           | 59      | 10           | 44      | 10           | 56      |
| 11           | 2       | 11           | 7       | 11           | 10      | 11           | 1       | 11           | 94      | 11           | 29      | 11           | 62      |
| 12           | 76      | 12           | 90      | 12           | 63      | 12           | 51      | 12           | 68      | 12           | 77      |              |         |
| 13           | 92      | 13           | 87      | 13           | 41      | 13           | 6       | 13           | 54      | 13           | 47      |              |         |
| 14           | 89      | 14           | 79      | 14           | 5       | 14           | 93      | 14           | 73      | 14           | 15      |              |         |
| 15           | 35      | 15           | 100     |              |         | 15           | 43      | 15           | 49      | 15           | 82      |              |         |

Two test frames were constructed for the testing. One test setup included a large test frame that allowed up to 15 fans to be tested at the same time, as shown in Figure 20. A second smaller test setup was constructed using a test frame that can accommodate up to two fans to be tested, as shown in Figure 21. Since the testing was lock-rotor condition, no vent hose was connected to the fan exhaust box housing.

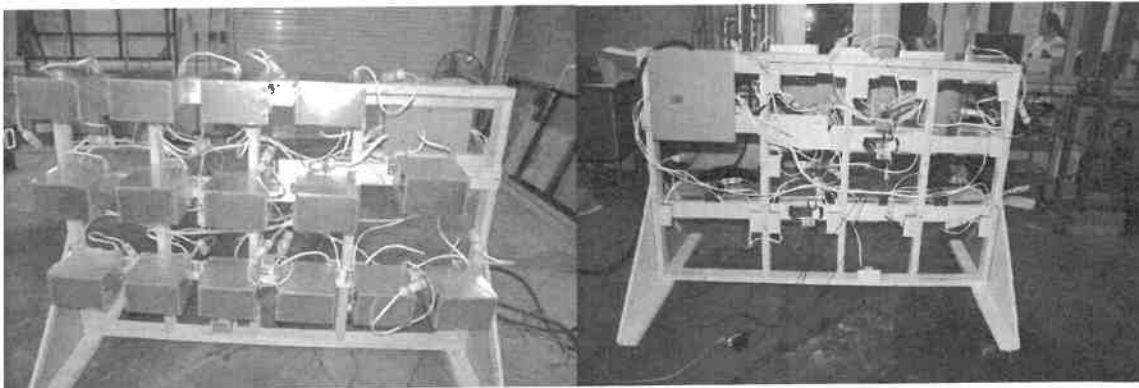


Figure 20. Large test frame and setup for up to 15 fans

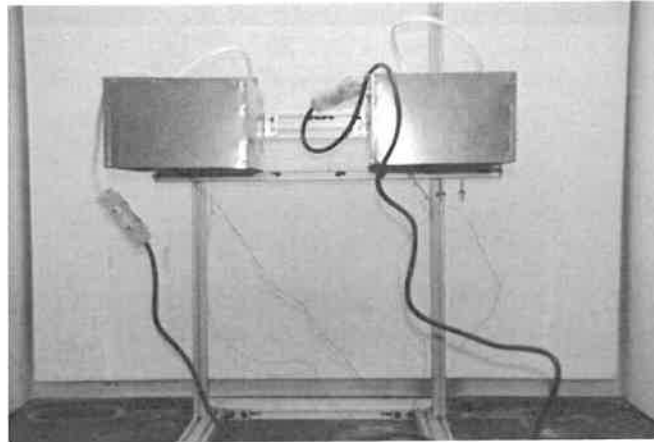


Figure 21 Smaller test frame and setup for up to 2 fans

#### *5.6.1 Test Groups 1 and 2 - Lock-Rotor Test (15 fans per group)*

Test Groups 1 and 2 each had 15 fans. Both groups of fans were tested on June 22, 2017. Each fan was instrumented with a thermocouple located on the exterior of the motor winding wrap on the side. Staff conducted a locked-rotor test by blocking the impeller with a nail through the side of the housing and energizing the fan with 120 VAC. The average ambient temperature at the start of the test was 26.8°C. Staff recorded the thermocouple measurements every 30 seconds.

All the TCOs activated (except Sub 60 due to the power connector coming loose early in the test). The measured temperature at the side of the winding when the TCO activated was between 110°C and 151°C (average 123°C). Sub 60 was later used for testing under the Section 5.3 Normal Fan Test to record temperature traces during normal operation. Based on the sub 60 temperature traces under Normal Fan Test, we assume that the TCO temperatures should be about 20°C higher than the temperature on the side of the windings. This would translate to between 130°C and 171°C at the TCO and an average of 143°C. The activation times varied between 20 to 50 minutes for both test groups.

#### *5.6.2 Test Group 3 - 105°C Variable Duration Conditioning and Lock-Rotor Test*

Test Group 3 had 14 fans. All 14 fans were placed in a conditioning oven at 4 p.m. on June 23, 2017. The conditioning oven temperature was set at 105°C. The 105°C conditioning temperature corresponds to approximately 50 percent of the temperature difference (mean) between the TCO temperatures at trip and normal operation, as shown in equation [1] below. The fans were conditioned continuously at 105°C for a minimum duration of 64.3 hours to a maximum of 305 hours. The fans were removed from the conditioning oven at different times. After a fan sample was removed from the conditioning oven for testing, the fan motor was allowed to cool to room temperature before conducting the lock-rotor test.

$$(TCO\ temp_{at\ trip} - TCO\ temp_{normal}) \times 50\% + TCO\ temp_{normal} = Conditioning\ Temp\ [1]$$

$$(143^{\circ}C - 73^{\circ}C) \times 50\% + 73^{\circ}C = 107.5^{\circ}C \approx 105^{\circ}C$$

During lock-rotor testing, each fan was instrumented with two thermocouples. One thermocouple was located on the exterior of the motor winding wrap on the side of the winding. The second thermocouple was located on the bottom of the winding as viewed when the fan is installed. The lock-rotor test was conducted by blocking the impeller and energizing the fan. The thermocouple temperature measurements were recorded every 10 seconds.

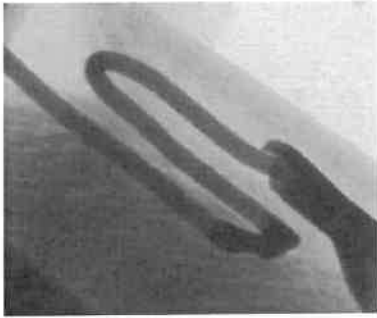
The smaller test setup was used during this testing series. Two fans were randomly removed from the conditioning oven at different conditioning periods to be tested. Table 5 lists the test frame location, thermocouple number, and conditioning period associated with each fan sub number.

Table 5. Conditioning periods for Test group 3 subs

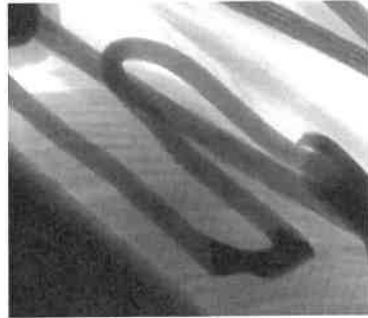
| Sub | Start Conditioning | End Conditioning | Conditioning Period (hh:mm) |
|-----|--------------------|------------------|-----------------------------|
| 42  | 6/23/17 4:00 PM    | 6/26/17 8:30 AM  | 64:30                       |
| 10  | 6/23/17 4:00 PM    | 6/26/17 8:30 AM  | 64:30                       |
| 63  | 6/23/17 4:00 PM    | 6/28/17 9:00 AM  | 113:00                      |
| 5   | 6/23/17 4:00 PM    | 6/28/17 9:00 AM  | 113:00                      |
| 19  | 6/23/17 4:00 PM    | 7/3/17 8:30 AM   | 232:30                      |
| 41  | 6/23/17 4:00 PM    | 7/3/17 8:30 AM   | 232:30                      |
| 64  | 6/23/17 4:00 PM    | 7/5/17 8:00 AM   | 280:00                      |
| 75  | 6/23/17 4:00 PM    | 7/5/17 10:00 AM  | 282:00                      |
| 99  | 6/23/17 4:00 PM    | 7/5/17 4:00 PM   | 288:00                      |
| 71  | 6/23/17 4:00 PM    | 7/5/17 4:00 PM   | 288:00                      |
| 39  | 6/23/17 4:00 PM    | 7/6/17 9:00 AM   | 305:00                      |
| 3   | 6/23/17 4:00 PM    | 7/6/17 9:00 AM   | 305:00                      |
| 30  | 6/23/17 4:00 PM    | 7/6/17 9:00 AM   | 305:00                      |
| 55  | 6/23/17 4:00 PM    | 7/6/17 9:00 AM   | 305:00                      |

#### Effects of Conditioning to the Thermal Linkages

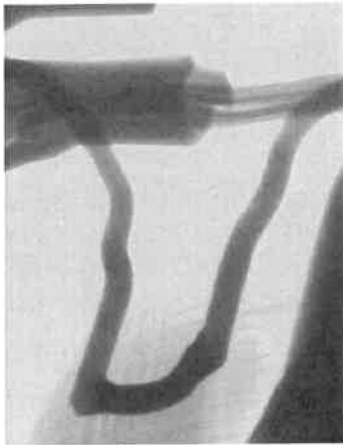
For test group 3, all of the TCOs were x-rayed before and after conditioning. The thermal linkages did not appear visually to have changed after conditioning at 105°C for up to 305 hours. Figure 22 shows radiographs of the thermal linkages before and after conditioning for various lengths of time.



Sub 10 - Before conditioning



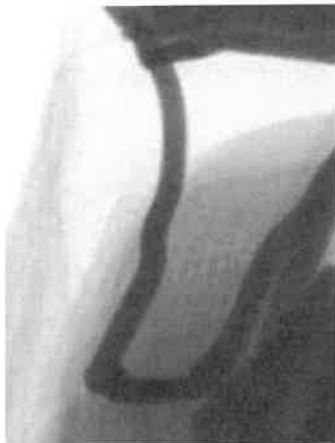
Sub 10 - After conditioning@105°C 64.5 hours



Sub 19 - Before conditioning



Sub 19 - After conditioning@105°C 232.5 hours



Sub 41 - Before conditioning

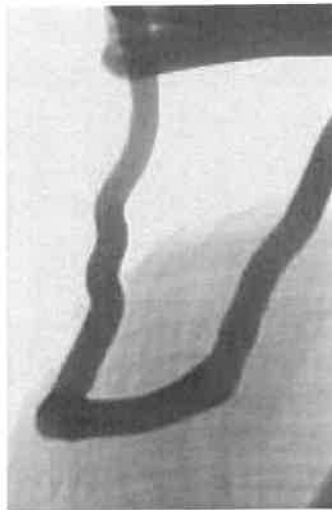


Sub 41 - After conditioning@105°C 232.5 hours





Sub 39 - Before conditioning



Sub 39 - After conditioning@105°C 305 hours

Figure 22 Thermal linkages before and after conditioning

## Results

Of the 14 units tested, one unit failed to open, allowing the winding to overheat and smoke. The unit's bobbin melted from overheating and arcing within the winding. Eight of the 14 units' TCOs opened within 24 minutes. Two of the 14 units' TCOs opened around 50 minutes, reaching temperatures above the rated  $T_f$  for the TCO. Eight of the 14 units had elevated temperatures that exceeded the TCOs' rated opening temperature of 136°C. Table 6 lists data for Test Group 3.

Table 6. Test Group 3 - 105°C Conditioning and Lock-rotor Test Data

| Sub | Condition Period (hh:mm) | Max. Temp. at side (°C) | Calculated Functioning Temperature (°C) | Max. Temp. at bottom (°C) | Elapsed Time to Trip (hh:mm:ss) | TCO Open or Activated | Smoke or Fire | Failed to Trip at 136°C |
|-----|--------------------------|-------------------------|---|---------------------------|---------------------------------|-----------------------|---------------|-------------------------|
| 42  | 64:30                    | 111.9                   | ~132                                    | Loose thermocouple        | 0:19:30                         | Yes                   | No            | No                      |
| 10  | 64:30                    | 127.5                   | ~148                                    | 181.6                     | 0:52:00                         | Yes                   | No            | Yes                     |
| 63  | 113:00                   | 109.0                   | ~129                                    | Loose thermocouple        | 0:22:00                         | Yes                   | No            | No                      |
| 5   | 113:00                   | 131.0                   | ~151                                    | 141.9                     | 0:18:00                         | Yes                   | No            | Yes                     |
| 19  | 232:30                   | 138.6                   | ~159                                    | 127.2                     | 0:54:00                         | Yes                   | No            | Yes                     |
| 41  | 232:30                   | 209.8                   | N/A                                     | 302.0                     | 2:40:00                         | No                    | Yes           | Yes                     |
| 64  | 280:00                   | 155.8                   | ~176                                    | 203.8                     | 3:26:00                         | Yes                   | No            | Yes                     |
| 75  | 282:00                   | 128.8                   | ~149                                    | 157.5                     | 0:24:00                         | Yes                   | No            | Yes                     |
| 99  | 288:00                   | 151.6                   | ~172                                    | 183.2                     | 4:00:00                         | Yes                   | No            | Yes                     |
| 71  | 288:00                   | 116.4                   | ~136                                    | 146.4                     | 0:19:00                         | Yes                   | No            | No                      |
| 39  | 305:00                   | 111.9                   | ~132                                    | 153.4                     | 0:18:00                         | Yes                   | No            | No                      |
| 3   | 305:00                   | 109.4                   | ~121                                    | 140.2                     | 0:22:00                         | Yes                   | No            | No                      |
| 30  | 305:00                   | 158.5                   | ~179                                    | 213.4                     | 1:37:00                         | Yes                   | No            | Yes                     |

| Sub | Condition Period (hh:mm) | Max. Temp. at side (°C) | Calculated Functioning Temperature (°C) | Max. Temp. at bottom (°C) | Elapsed Time to Trip (hh:mm:ss) | TCO Open or Activated | Smoke or Fire | Failed to Trip at 136°C |
|-----|--------------------------|-------------------------|---|---------------------------|---------------------------------|-----------------------|---------------|-------------------------|
| 55  | 305:00                   | 105.4                   | ~125                                    | 154.3                     | 0:22:00                         | Yes                   | No            | No                      |

### Sub 10 - Lock-Rotor Test

Staff conditioned the fan (sub 10) for 64 hours 30 minutes. During the locked-rotor testing, the TCO activated. The TCO activated approximately 52 minutes after the rotor was locked. The activation time was about 30 minutes longer than seen during typical lock-rotor testing, which activated around 20 minutes within the testing. Figure 23 shows the temperature traces for the thermocouples during the lock-rotor test.

Figure 24 shows the CT scan of the fusible link after the lock-rotor test. As seen in prior testing when the trip time is longer than average, the fusible link melts at the center of the link. The figure does show a partial wetting of the electrodes occurred, which allowed the solder link to bead.

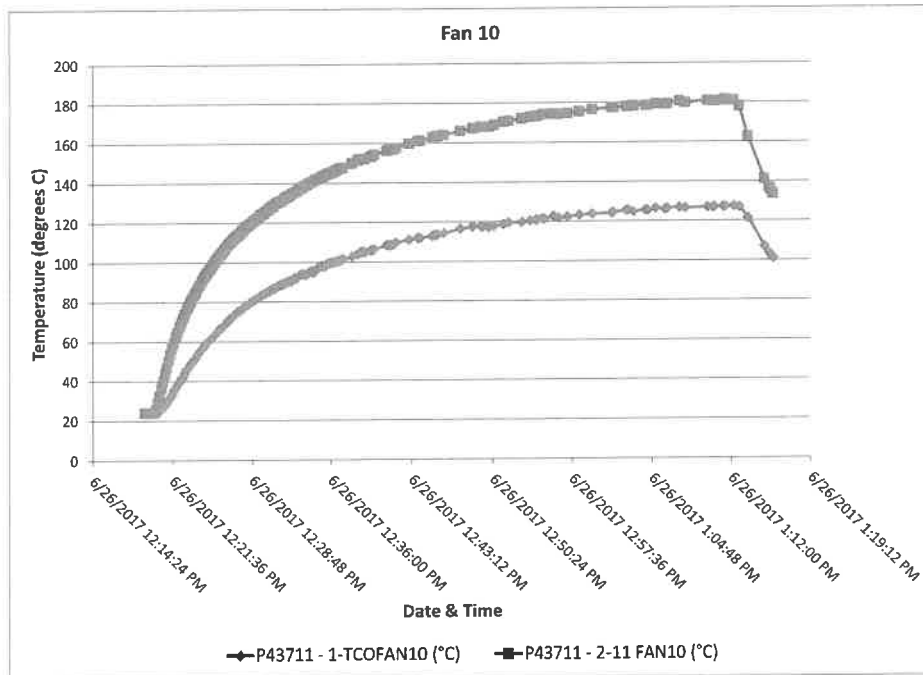


Figure 23. Temperature traces for Sub 10 Test Group 3 - Lock-Rotor Test

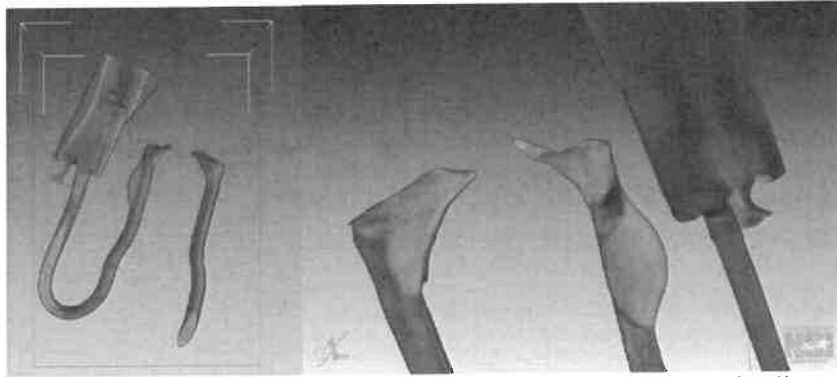


Figure 24. CT scan of the fusible link after lock-rotor testing (sub 10)

### Sub 41- Lock-Rotor Test

Staff conditioned the fan (sub 41) for 232 hours 30 minutes. During the lock-rotor testing, the TCO did not activate. After about an hour, the temperature appeared to have leveled to a constant temperature or steady state. Staff terminated the lock-rotor testing after approximately 2 hours 30 minutes. Figure 25 shows the temperature traces for the thermocouples during the lock-rotor test on July 3, 2017.

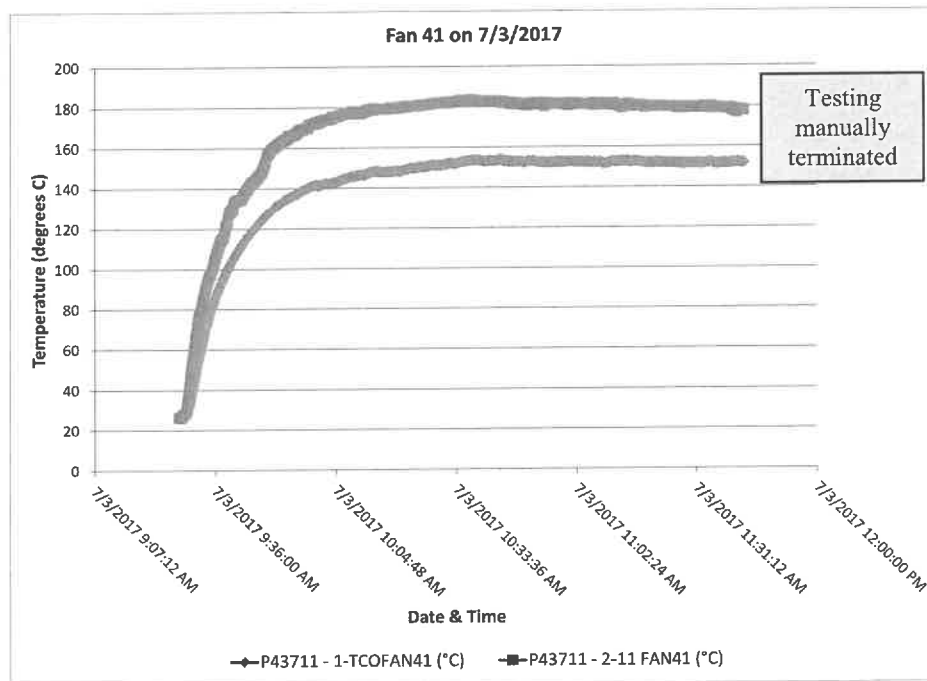


Figure 25. Temperature traces for Sub 41 Test Group 3 - Lock-rotor Test

Staff allowed the fan to cool to room temperature before retesting. During the second lock-rotor test, the temperatures increased rapidly, and the unit began to smoke. The temperature suddenly increased and arcing could be heard. Suddenly the arcing ceased, and the temperature began to decrease. Figure 26 shows the temperature traces for the thermocouples during the lock-rotor test on July 5, 2017. The thermocouple located at the

TCO (blue trace) detached from the surface of the winding when the unit began to smoke, which resulted in a sudden drop in temperature. The elapsed time to maximum temperature was about 9 minutes, 50 seconds.

Figure 27 shows the fan producing significant smoke during the second lock-rotor testing. There were no visible flames during the testing. Examination of the motor shows localized overheating and arcing in the winding. The full elapsed time for the first and second lock-rotor tests was about 2 hours 40 minutes.

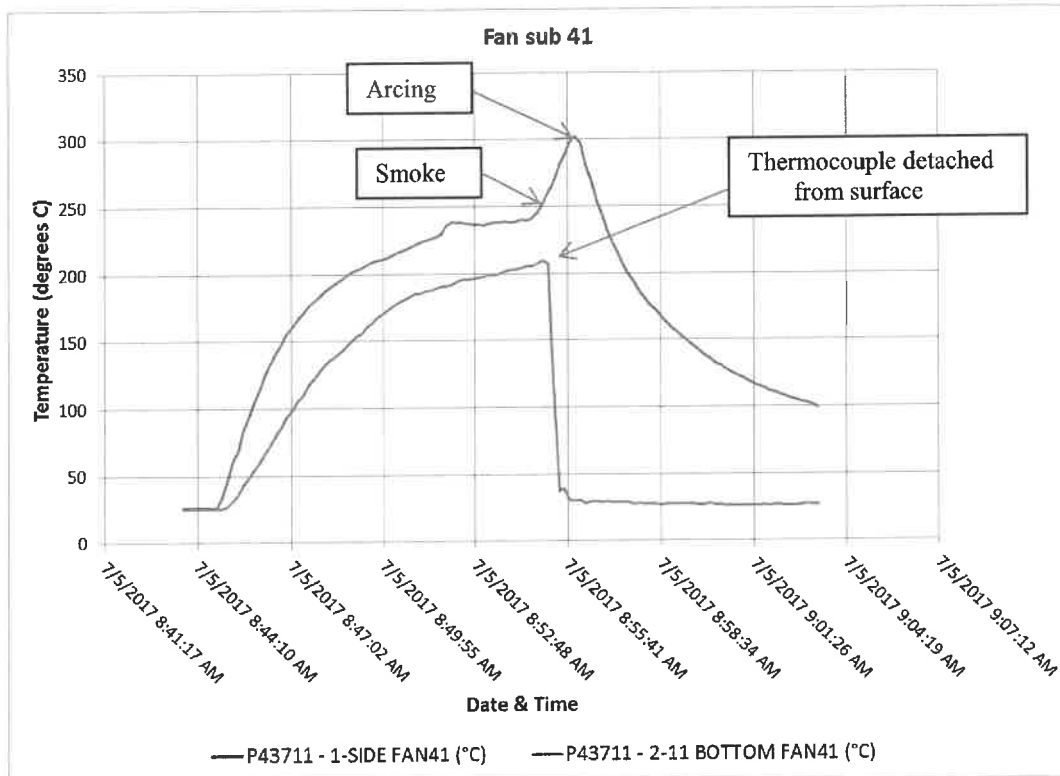


Figure 26. Temperature traces for Sub 41 Test Group 3 - Lock-Rotor Test on July 5, 2017

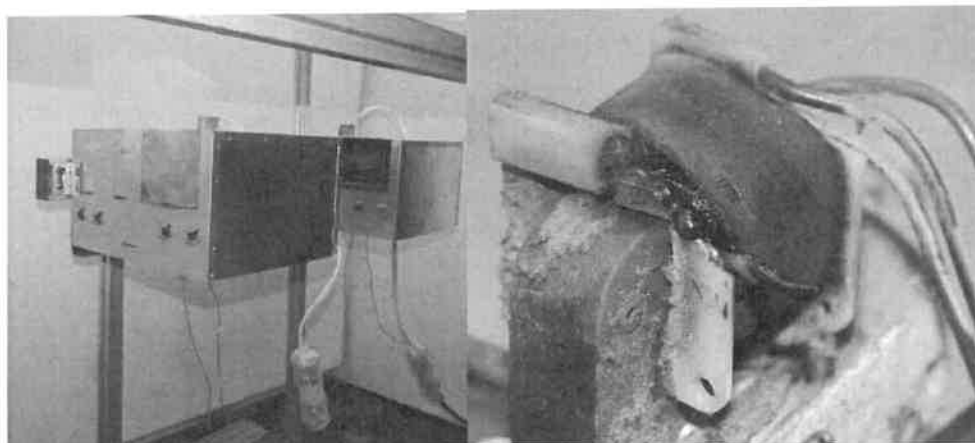


Figure 27. Sub 41 Test Group 3 - Lock-Rotor Test producing smoke and post examination

Post examination shows the TCO's fusible link to be intact, as shown by CT scans in Figure 28. During lock-rotor testing, the TCO failed to activate, but the event ended because the motor winding opened, thus de-energizing the motor.

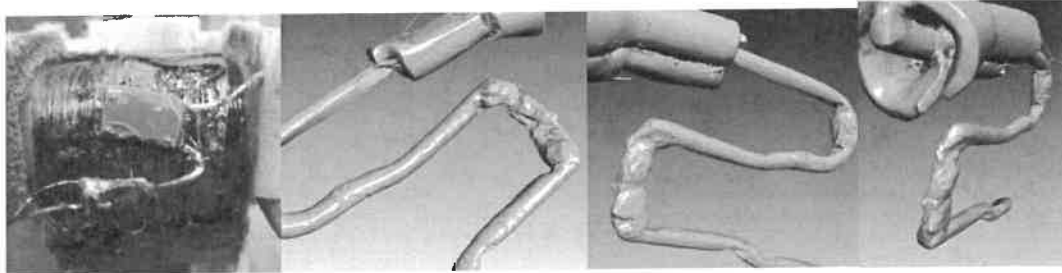


Figure 28. TCO from Sub 41 after Lock-Rotor Test

#### Sub 64 - Lock-Rotor Test

Staff conditioned the fan (sub 64) for 280 hours. During the initial lock-rotor testing on July 5, 2017, the TCO did not activate. The temperature appeared to have leveled to a constant temperature or steady state. Staff manually terminated the testing at noon, after approximately 3 hours 15 minutes.

Staff allowed the fan to cool for 45 minutes (to approximately room temperature) before retesting. During the second lock-rotor test, the TCO activated. Figure 29 shows the temperature traces for the thermocouples during the second lock-rotor test. The TCO tripped after approximately 11 minutes during the second lock-rotor test.

Post examination revealed a solder bead external to the TCO casing, as highlighted by the yellow circle shown in Figure 30. Microscopic images of the TCO show that the solder bead originated from inside the TCO because solder was located in cracks between the epoxy seal and the lead wire, as shown in Figure 31. Figure 32 shows the CT scans with the partially melted fusible link after the testing, thus, indicating the TCO did activate, but abnormally. Visible in the CT scan is the solder bead, highlighted by the yellow circles.

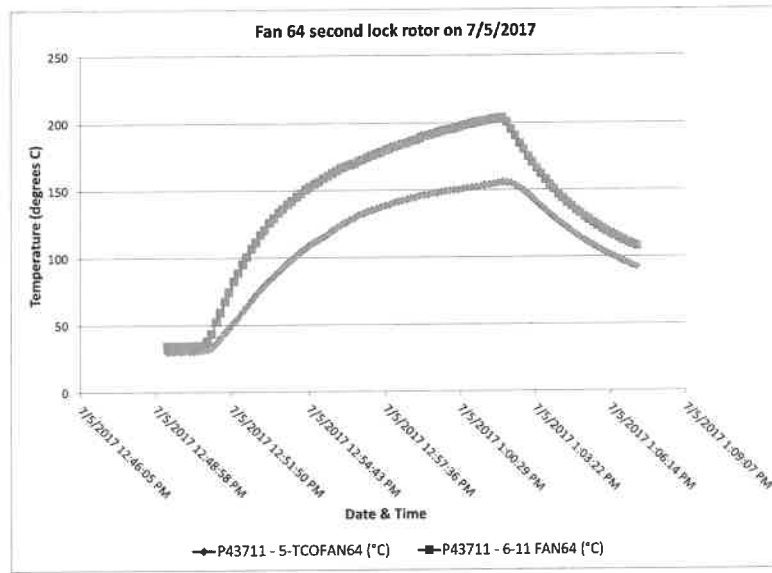


Figure 29. Temperature for Sub 64 Test Group 3 during Second Lock-Rotor Test

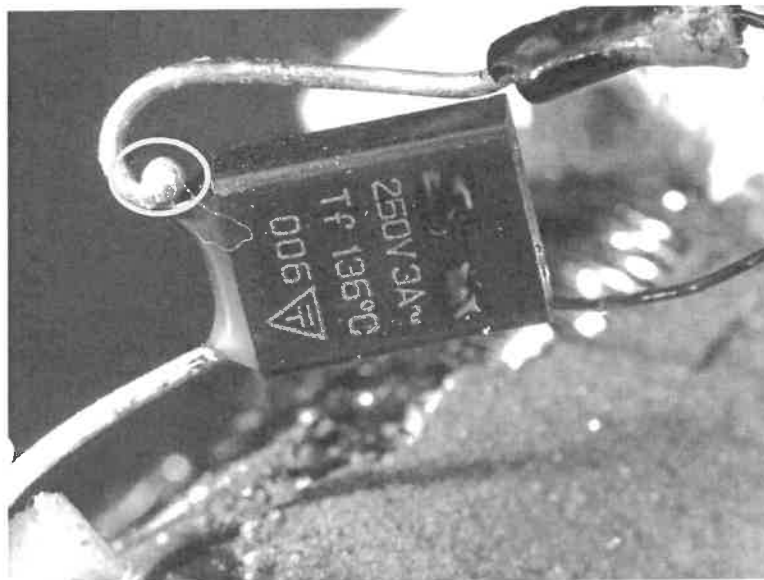
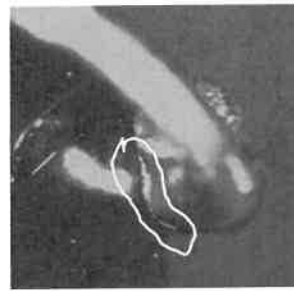


Figure 30. Solder bead on TCO lead from Sub 64 after second Lock-Rotor Test



Solder bead



Solder in the cracks of the epoxy/electrode

Figure 31. Microscopic images of the solder bead and solder in the cracks (Sub 64)

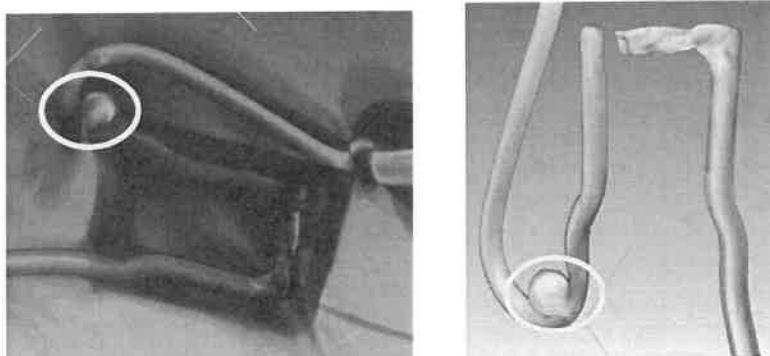


Figure 32. CT scans of the TCO showing the solder bead (Sub 64)

### Sub 99 - Lock-rotor Test

Staff conditioned the fan (sub 99) for 288 hours before being subjected to three lock-rotor test periods as summarized in Table 7. During the initial lock-rotor test (segment A), the TCO did not activate. During the second lock-rotor test (segment B), the TCO did not activate. The TCO activated during the third lock-rotor test (segment C). Figures 33 and 34 show the temperature traces for the thermocouples during the three segments of lock-rotor test. The TCO tripped after approximately 30 minutes during the third lock-rotor test, but after almost 5 hours of combined lock-rotor testing (sum of the test duration for all of the segments up to the activation).

Table 7. Segment lock-rotor testing (Sub 99)

| Testing Segment | Test Duration (hh:mm:ss) | Maximum temperature at Side Windings (C) | Calculated TCO Temperature (C) | Maximum temperature at Bottom Windings (C) | Notes               |
|-----------------|--------------------------|--|--------------------------------|--|---------------------|
| PART A          | 3:09:36                  | 150                                      | ~170                           | 182.6                                      | Manually terminated |
| PART B          | 1:12:06                  | 151.6                                    | ~172                           | 183.2                                      | Manually terminated |
| PART C          | 0:29:42                  | 140.9                                    | ~161                           | 173.3                                      | TCO tripped         |

Post examination revealed the TCO had a solder bead external to the TCO casing. Figure 35 shows the CT scans with the partially melted fusible link after the testing, thus, indicating the TCO did activate, but abnormally. Microscopic images show that the solder originated from inside the TCO because of solder located within the cracks between the epoxy seal and the lead wires. Figure 36 shows the microscope images of the solder bead and solder in the cracks.

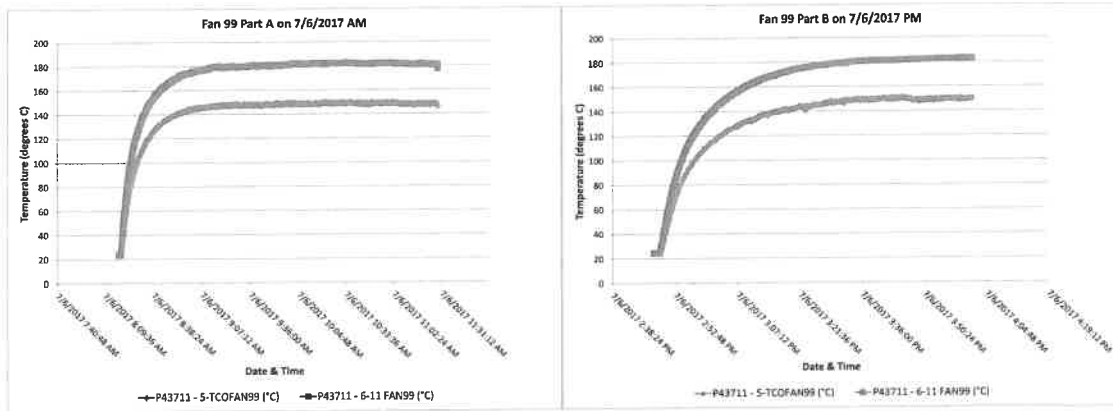


Figure 33. Segment Part A and B temperatures for Sub 99 Test Group 3 - Lock-Rotor Test

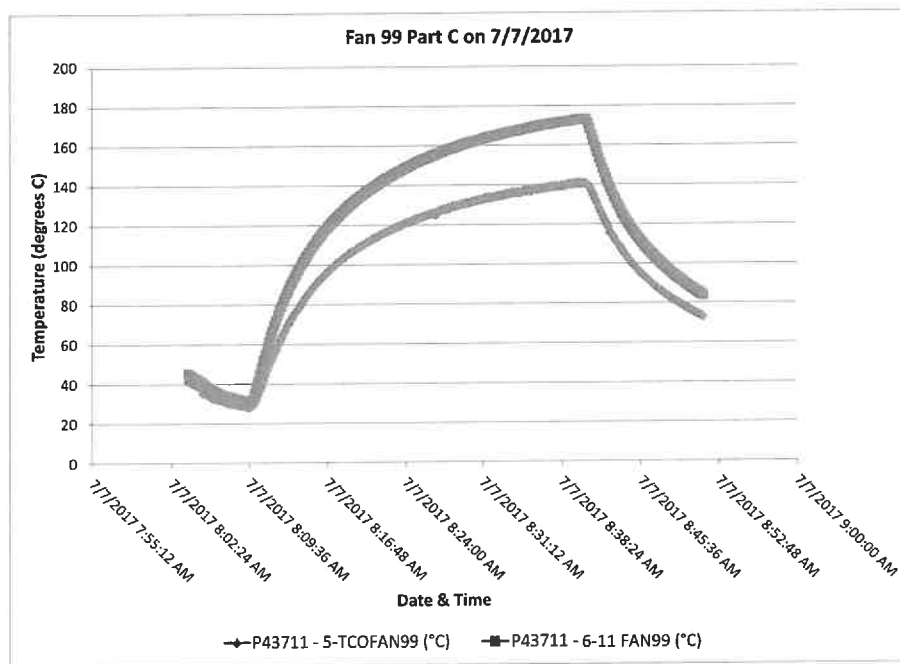


Figure 34. Segment part C temperature traces for Sub 99 Test Group 3 - Lock-Rotor Test

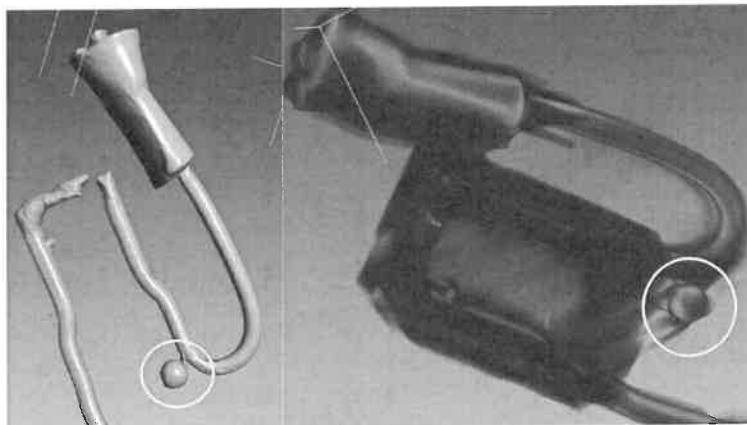
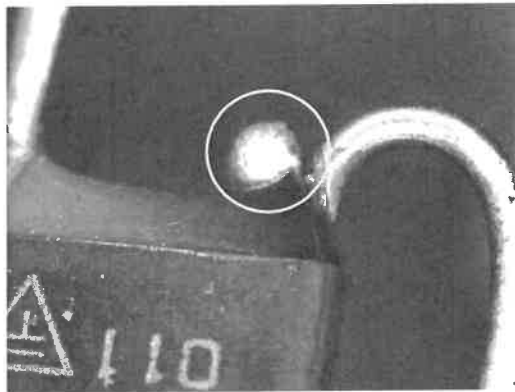
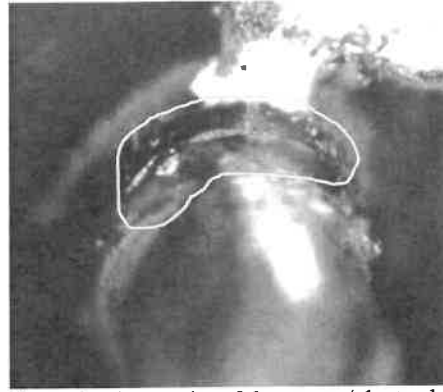


Figure 35. CT scans of the TCO showing the solder bead (Sub 99)





Solder bead



Solder in the cracks of the epoxy/electrode

Figure 36. Microscopic images of the solder bead and solder in the cracks (Sub 99)

### 5.6.3 Test Group 4 - 105°C 165 Hours Conditioning and Lock-Rotor Tests

Test Group 4 had 15 fans. Staff placed the 15 fans in the conditioning oven at 2:30 p.m. on July 6, 2017. Staff set the conditioning oven at 105°C. After 165 hours (July 13, 2017 at 11:30 am), all 15 units were removed from the conditioning oven and installed in the large test frame. The fans were allowed to cool to room temperature before testing. A single thermocouple was placed on the side of the winding for each fan sample. The fans were tested in a lock-rotor condition on July 14, 2017. Figure 37 shows the temperature traces for Test Group 4 – Lock-Rotor Test.

Eleven of the 15 fans had the TCO activate in less than 45 minutes during the lock-rotor testing. One fan's TCO opened shortly after 2 hours (sub 58). Three of the 15 fans' TCOs (sub 6, 51 and 66) failed to activate or open after 4 hours of lock-rotor, and staff manually terminated the test. Table 8 lists the test results from Test Group 4 lock-rotor testing.

Table 8. Test Group 4 - 105°C Conditioning and Lock-Rotor Test Result

| Test Group 4               |             |                  | TCO     |              |                                 |
|----------------------------|-------------|------------------|---------|--------------|---------------------------------|
| Test Frame Location Number | Fan Sub No. | Thermocouple id  | Tripped | Elapsed Time | TCO Failed to Activate Normally |
| 1                          | 81          | P43711-1-11FAN01 | Yes     | 32 m 35 s    | No                              |
| 2                          | 45          | P43711-2-11FAN02 | Yes     | 32 m 35 s    | No                              |
| 3                          | 11          | P43711-3-11FAN03 | Yes     | 33 m 34 s    | No                              |
| 4                          | 28          | P43711-4-11FAN04 | Yes     | 37 m 24 s    | No                              |
| 5                          | 67          | P43711-1-11FAN05 | Yes     | 40 m 15 s    | No                              |
| 6                          | 58          | P43711-6-11FAN06 | Yes     | 2 h 3 m 43 s | Yes                             |
| 7                          | 66          | P43711-7-11FAN07 | No      | Over 4 hours | Yes                             |
| 8                          | 9           | P43711-8-11FAN08 | Yes     | 34 m 54 s    | No                              |
| 9                          | 17          | P42524-1-11FAN09 | Yes     | 35 m 53 s    | No                              |
| 10                         | 84          | P42524-2-24FAN10 | Yes     | 40 m 52 s    | No                              |
| 11                         | 1           | P42524-3-24FAN11 | Yes     | 44 m 12 s    | No                              |

|         |    |                  |     |              |     |
|---------|----|------------------|-----|--------------|-----|
| 12      | 51 | P42524-4-24FAN12 | No  | Over 4 hours | Yes |
| 13      | 6  | P42524-5-24FAN13 | No  | Over 4 hours | Yes |
| 14      | 93 | P42524-6-24FAN14 | Yes | 38 m 1 s     | No  |
| 15      | 43 | P42524-7-24FAN15 | Yes | 30 m 11 s    | No  |
| Ambient |    | P42524-8-24Amb   |     |              |     |

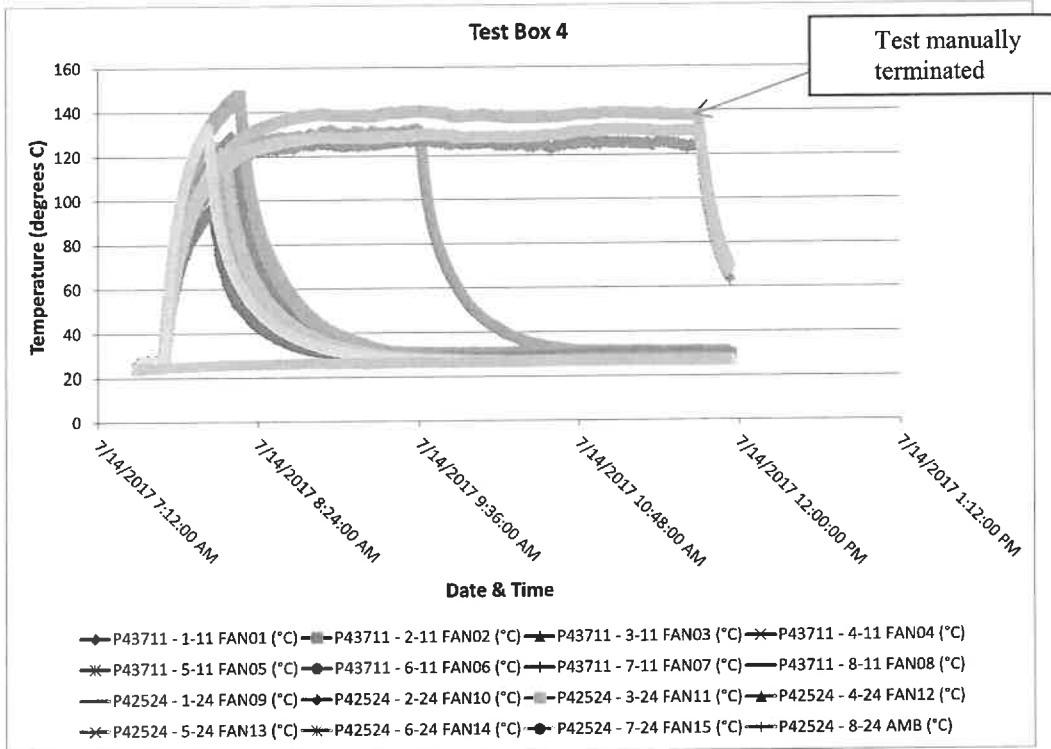


Figure 37. Temperature traces for Test Group 4 - Lock-Rotor Test

Figure 38 shows fan subs 6, 51, 58 and 66 temperature traces for Test Group 4 – Lock-rotor Test. These subs had a TCO that had activation trip times that were long or never tripped. The TCOs were x-rayed and CT scanned.

Figure 39 shows the TCO from sub 58, which tripped but took more than 2 hours. As seen in previous TCOs that had a long trip time, the melted linkage would bead to both wire leads; but in this case, the radiograph shows a thin portion of the fusible link still present.

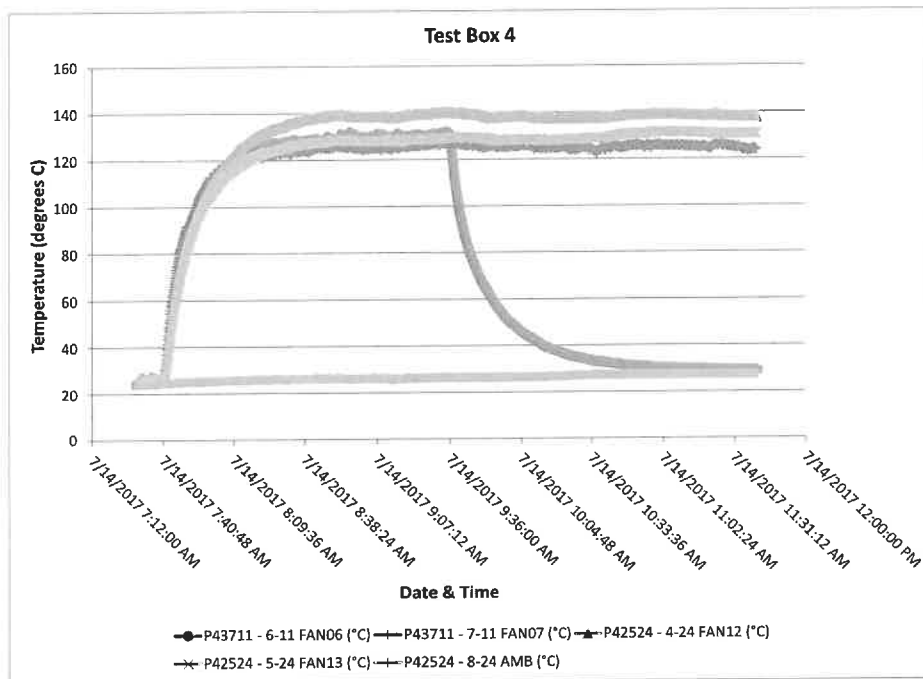


Figure 38. Temperature traces for Subs 6, 7, 12 and 13 (Test Group 4 - Lock-Rotor Test)

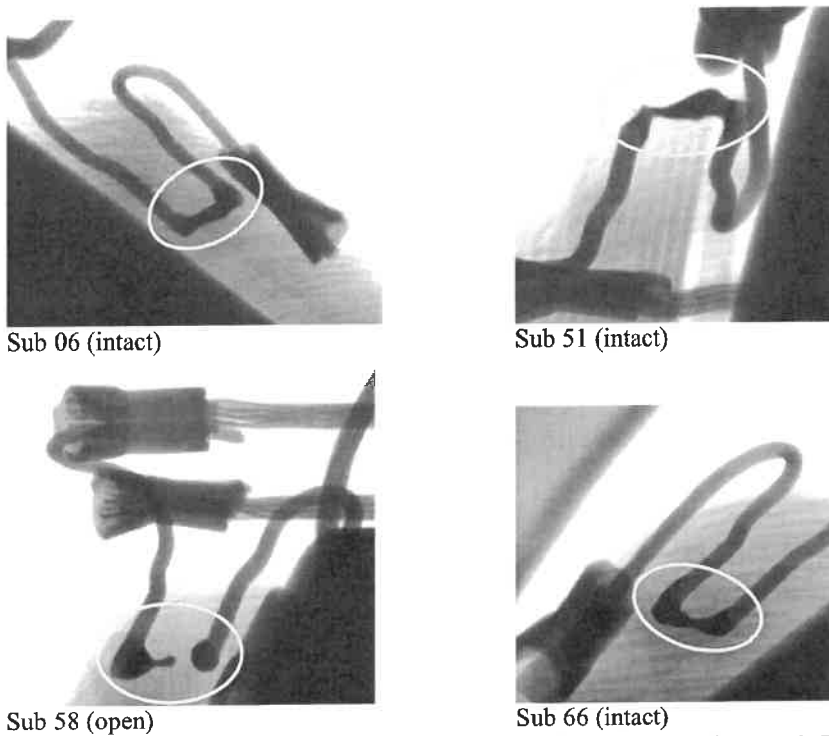


Figure 39. Radiograph of subs 6, 51, 58 and 66 after Lock-Rotor test

#### 5.6.4 Test Group 5 - 105°C 330 Hours Conditioning and Lock-Rotor Tests

Test Group 5 had 15 fans, but only 13 fans were subjected to the lock-rotor test. All 15 fans were in the conditioning oven continuously for 330 hours at 105°C. After 330 hours, all 15 units were removed from the conditioning oven and allowed to cool to room temperature (approximately 23°C) before testing.

Each fan was instrumented with three thermocouples. Channel 1 thermocouple (T) was located at the top of the winding wrap, as viewed with the fan installed. Channel 2 thermocouple (M) was located on the exterior of the winding wrap and on the side of the motor winding on the same side as the TCO. The third thermocouple (B) was located at the bottom or on the lowest side of the winding wrap when the fan is installed. The lock-rotor test was conducted by blocking the impeller and energizing the fan. The thermocouple temperature measurements were recorded every 10 seconds.

#### Results

Seven of the 13 fans had the TCO activate in less than 34 minutes during the lock-rotor testing. The average maximum winding temperature measured was 160°C before the TCO tripped. On average for the seven fans, the TCO tripped about 20 minutes into the lock-rotor testing. Two (Fan subs 46 and 68) of the 13 fans ran in lock-rotor condition for at least 1 hour before the TCO tripped. One (Fan sub 94) of the 13 fans ran in a lock-rotor condition for almost 37 minutes on the first day before the test was manually terminated (end of the day). When the same unit (Fan sub 94) was lock-rotor tested on the second day, the TCO tripped after about 32 minutes. One (Fan sub 54) of the 13 fans was tested in the lock-rotor condition for a continuous 22 hours, which did not result in the TCO to open or a fire. Staff manually terminated the testing (the fan was de-energized). Two (Fan subs 73 and 23) of the 13 fans ignited during the lock-rotor testing. The TCOs failed to activate in both of these units. Table 9 lists the test results from Test Group 5 lock-rotor testing.

Table 9. Test Group 5 – Conditioning 330 hours at 105°C and Lock-Rotor Test Results

| Test Group 5              |         | TCO     |  |                     |                                 |   |
|---------------------------|---------|---------|--|---------------------|---------------------------------|---|
| Test date                 | Sub No. | Tripped | Elapsed time                           | Maximum temperature | TCO failed to activate normally | Results                                     |
| 7/31/2017                 | 46      | Yes     | 1 h 1 m 55 s                           | 163°C               | Abnormal                        | Steady state before tripping, Late TCO trip |
| 8/1/2017<br>–<br>8/2/2017 | 94      | Yes     | 36 m 57 s (Day 1)<br>31 m 57 s (Day 2) | 202°C               | Abnormal                        | Late TCO trip                               |
| 8/2/2017                  | 57      | Yes     | 33 m 42 s                              | 202°C               | Normal                          |   |
| 8/3/2017<br>-8/4/2017     | 37      | Yes     | 15 m 12 s                              | 159.6°C             | Normal                          |   |
|                           | 54      | No      | Steady state for 22 hours continuous   | 224.8°C             | Failed to open                  | Manually terminated testing                 |

|          |    |     |  |         |                |                              |
|----------|----|-----|--|---------|----------------|------------------------------|
| 8/2/2017 | 73 | No  | steady state (~189°C)<br>1 h 55 m 40 s | 507.4°C | Failed to open | Fire                         |
|          | 33 | Yes | 18 m 52 s                              | 145.7°C | Normal         |                              |
| 8/2/2017 | 14 | Yes | 20 m 52 s                              | 137.4°C | Normal         |                              |
|          | 49 | Yes | 17 m 01 s                              | 163.9°C | Normal         |                              |
| 8/4/2017 | 48 | Yes | 18 m 21 s                              | 147.7°C | Normal         |                              |
|          | 23 | No  | steady state (~186°C)<br>2 h 03 m 41 s | 547.3°C | Failed to open | Fire                         |
| 8/4/2017 | 50 | Yes | 15 m 02 s                              | 165.2°C | Normal         |                              |
|          | 68 | Yes | 2 h 6 m 12 s                           | 206.2°C | Abnormal       | Steady state before tripping |

### Sub 73 – Conditioning and Lock-Rotor Test

Fan sub 73 was in lock-rotor condition for about 1 hour and 56 minutes before the unit ignited, as shown in Figure 40. The fan's winding temperature was at a steady-state temperature (~188°C) above the TCO function temperature for about 1 hour, until the winding temperature began to increase rapidly. This rapid increase in temperature is an indication of shorting in the winding, which reduces the winding resistance and increases the current. Before ignition, with the winding temperature at about 233°C, the unit was producing visible white smoke. When the unit ignited around 289°C, there was a large flash and flames for a brief moment. It appears that the gaseous vapors driven off the winding coating ignited. The flames subsided slightly until the wrap around the winding and the coating on the windings started to burn, growing in intensity. The flames impinged on and ignited the plastic impeller. The burning impeller and bobbin resulted in dripping flaming plastic. Four layers of cheesecloth were placed under the fan to be used as an ignition indicator to verify that the dripping plastic continued to burn as it landed on the surface below. The dripping flaming plastic caused the cheesecloth to ignite, which indicates that the fan's plastic grill could also ignite in this type of situation. Figure 41 shows a sequence of photographs demonstrating the progression during lock-rotor testing on sub 73.

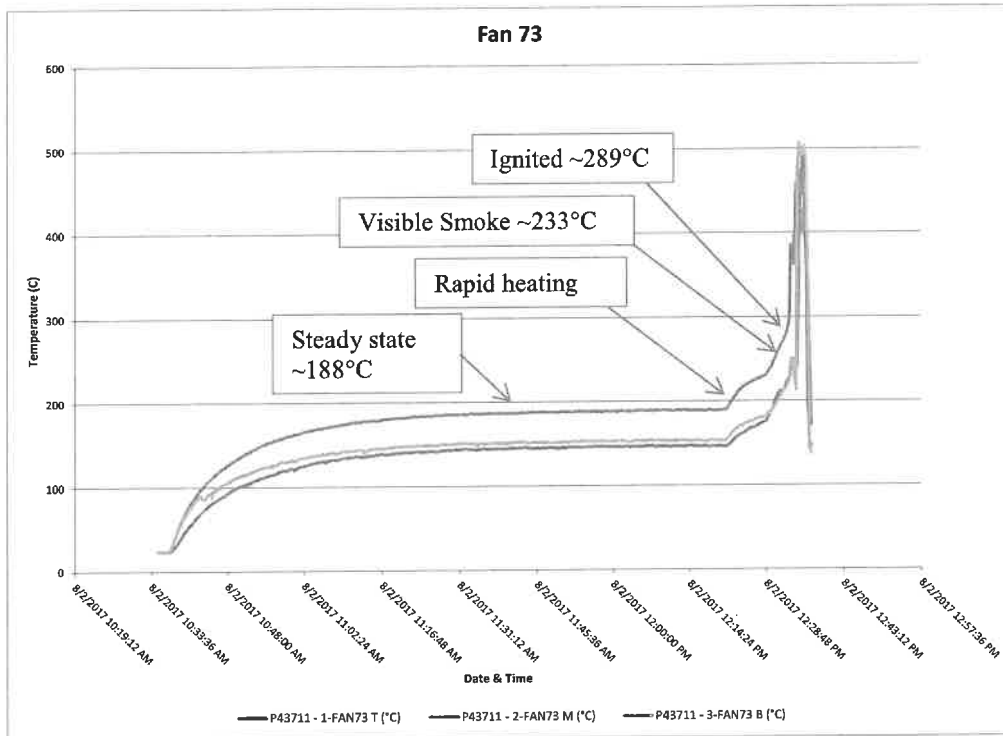
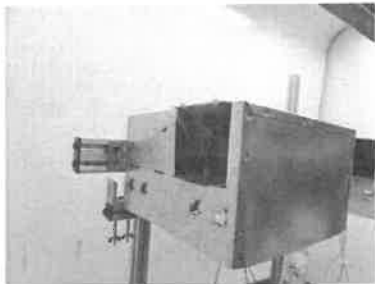


Figure 40. Winding temperatures during lock-rotor test for Fan sub 73



At around 233°C, the fan begins producing white smoke



At sufficient temperatures, there appears to be an ignition of gases around the motor around 288°C



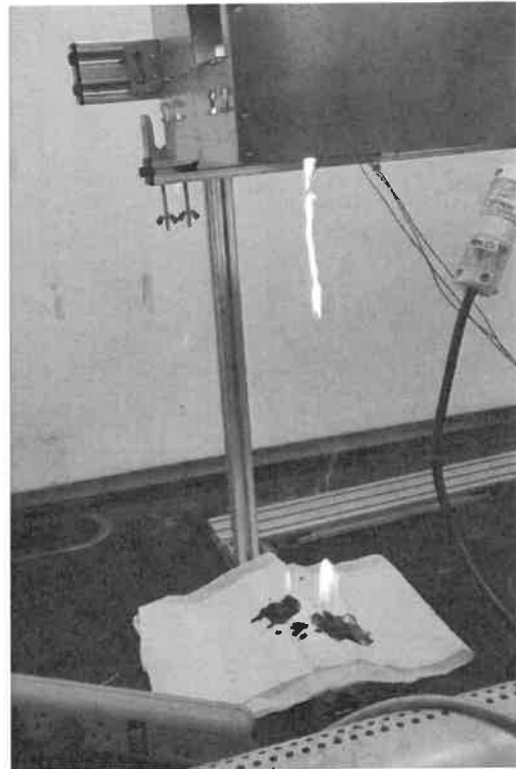
The large flames subside and the winding wrap and/or the winding coating appears to be burning



More of the winding wrap and the coating on the winding burns, thus creating a larger flame



The impeller has ignited and begins to sag onto the motor



Dripping flaming plastic ignites the cheesecloth ignition indicator

Figure 41. Fan sub 73 during lock-rotor test

Figure 42 shows a radiograph of the TCO after the test. Post-test radiographs of the TCO show the TCO is open, which was caused by the intense heat from the flames. This would suggest that any analysis of a TCO after a fire incident does not necessarily indicate the status of the TCO during the incident.

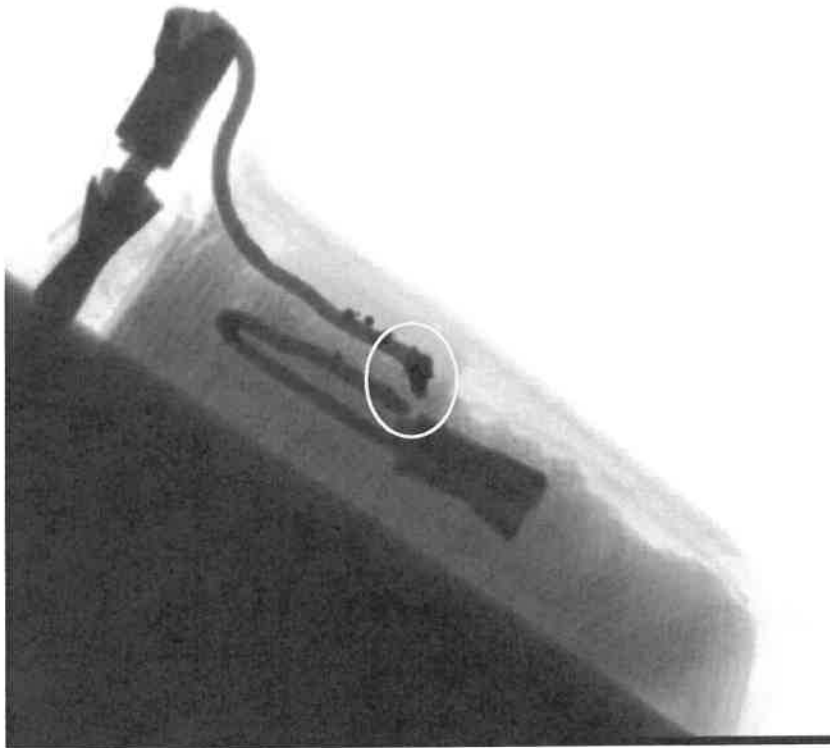


Figure 42. Radiograph of the TCO after the test (sub 73)

CPSC staff reviewed the CT scans of the thermal linkage for fan sub 73. The thermal linkage shows abnormalities as shown in Figure 43. The CT scans appear to show the linkage to take partial form of the TCO case, such that a flat section had formed. In theory, temperatures below  $T_f$  may be causing the thermal linkage to soften. This may cause changes in the eutectic materials, where it may alter the eutectic temperature or  $T_f$ .



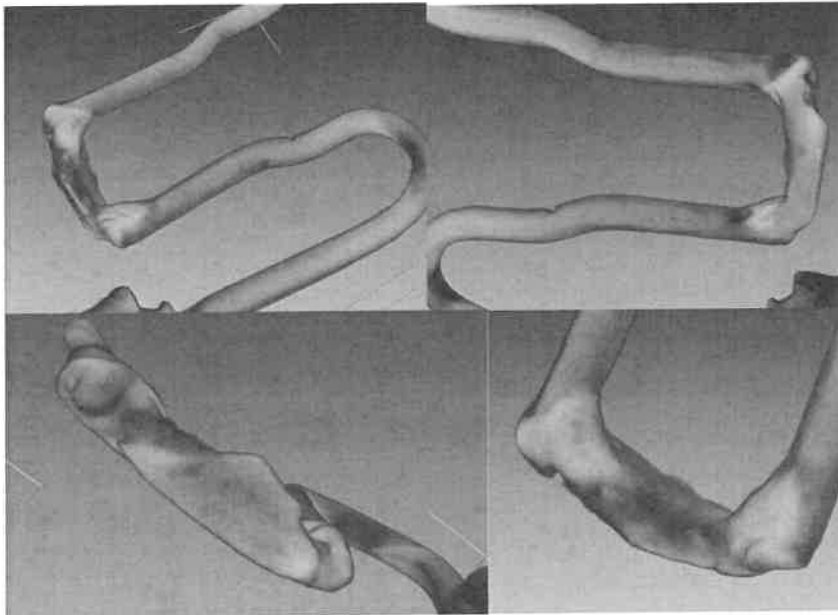


Figure 43. CT scans of the TCO before conditioning (sub 73)

#### Sub 23 – Conditioning and Locked-Rotor Test

Fan sub 23 was in lock-rotor for about 2 hours and 40 minutes before the unit ignited, as shown in Figure 44. The fan's winding temperature,  $\sim 186^{\circ}\text{C}$ , was at steady state, above the TCO specified activation temperature, until the winding temperature began to increase rapidly. This rapid increase in temperature indicates shorting in the winding, which reduces the winding resistance. Before ignition, at about  $\sim 292^{\circ}\text{C}$ , the unit was producing visible white smoke. Similar to Fan sub 73, when the unit ignited at  $\sim 340^{\circ}\text{C}$ , it produced a large flash and flames for a brief moment. The large flames subsided slightly, until the flames ignited more of the wrap around the winding and/or the coating of the winding. The flames impinged on and ignited the plastic impeller. The burning impeller and bobbin resulted in dripping flaming plastic. Four layers of cheesecloth were placed under the fan to be used as an ignition indicator. The dripping flaming plastic ignited the cheesecloth, which indicates that the fan's plastic grill could also ignite in this type of situation. Figure 45 is a sequence of photographs during lock-rotor testing for sub 23.

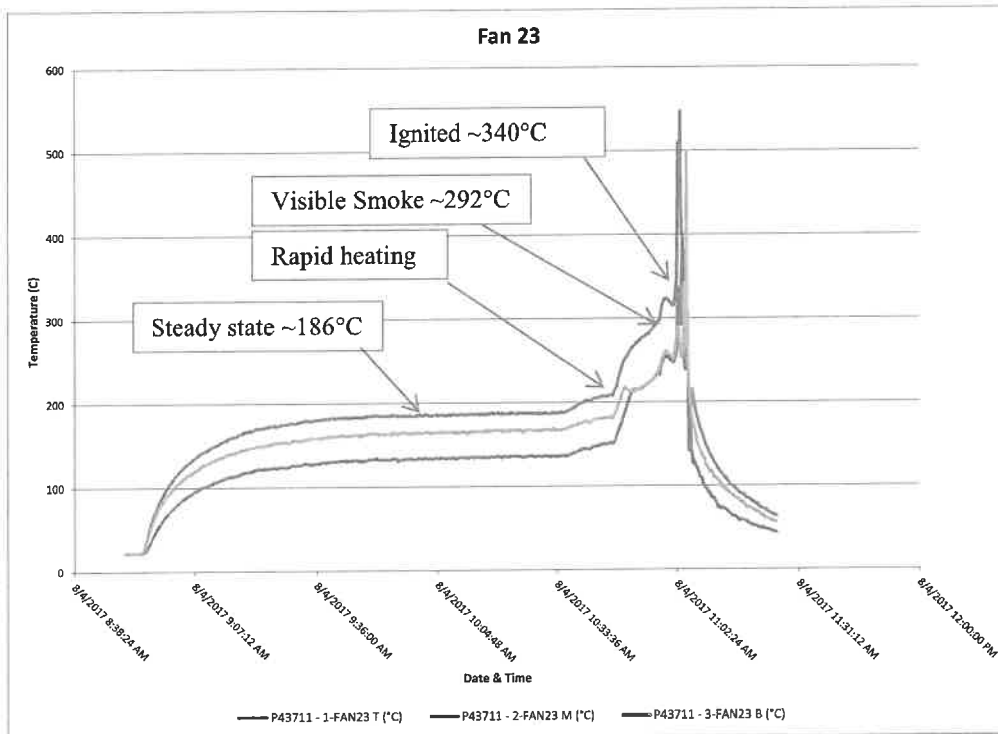


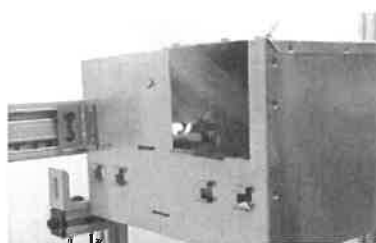
Figure 44. Winding temperatures during lock-rotor test for Fan sub 23



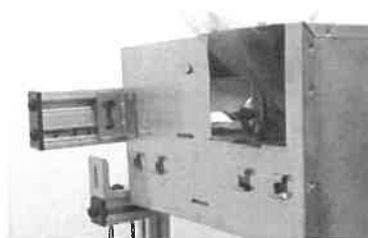
At around 292°C, the fan begins producing white smoke



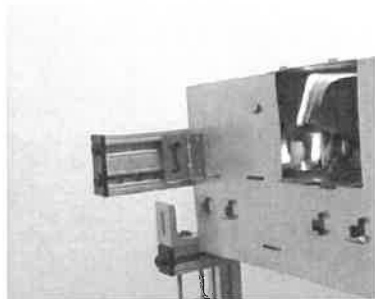
At approximately 340°C, there appears to be an ignition of gases around the motor



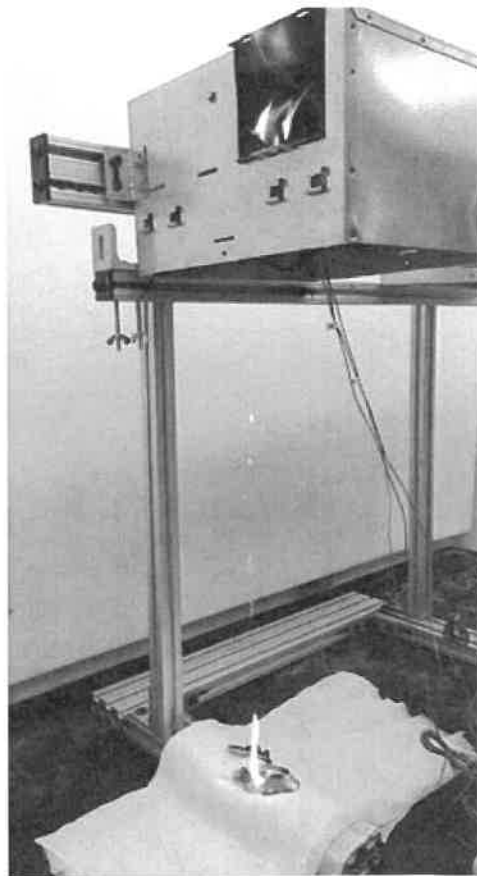
The large flames subside and the winding wrap and/or the winding coating appears to be burning



More of the winding wrap and the coating on the winding burns, thus creating a larger flame



The impeller has ignited and begins to sag onto the motor



Dripping flaming plastic ignites the cheesecloth ignition indicator

Figure 45. Fan sub 23 during lock-rotor test

Figure 46 shows a radiograph of the TCO after the test. Post-test radiographs of the TCO show the TCO is open, which was caused by the intense heat from the flames. This would suggest that any analysis of a TCO after a fire incident does not necessarily indicate the status of the TCO during the incident. The radiograph shows a thin portion of the thermal linkage intact. It would appear even at the high temperatures when the motor ignited, portions of the eutectic material in the thermal linkage could not melt.



Figure 46. Radiograph of the TCO after the test (sub 23)

The CT scans of the thermal linkage for fan sub 23 were reviewed. The thermal linkage shows some abnormalities, as shown in Figure 47. The CT scans appear to show the linkage uneven and bulging in some areas.

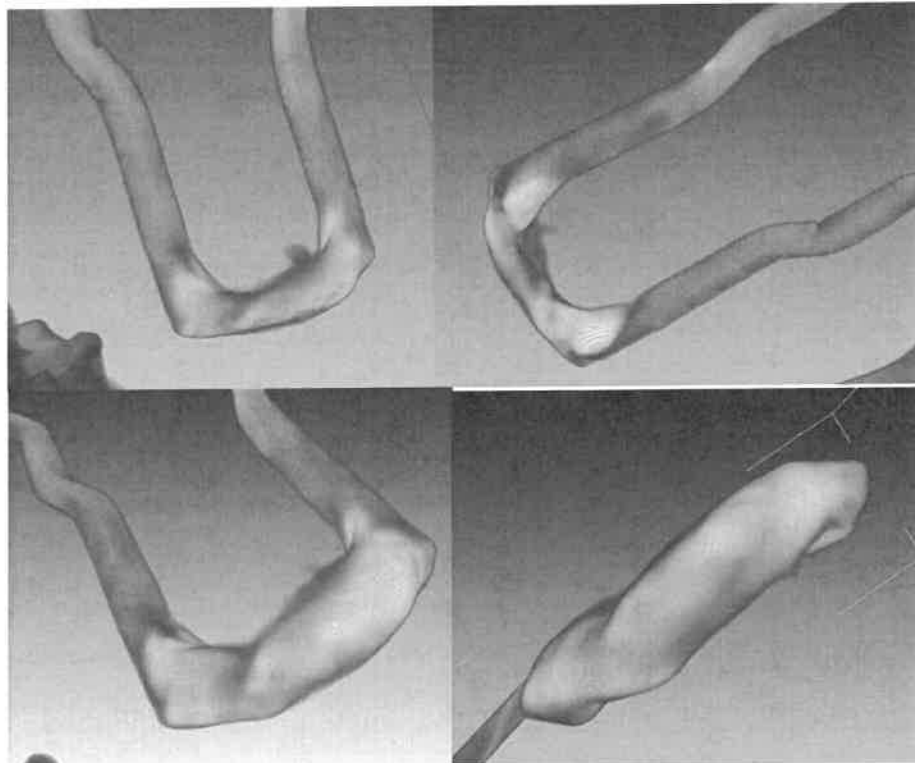


Figure 47. CT scans of the TCO before conditioning (sub 23)

## Sub 54 – Fails to Open After 22 Hours of Lock-Rotor Testing

As previously indicated, fan sub 54 was tested in lock-rotor condition for 22 hours. After the initial 3 hours, the temperature increased and then leveled off. The fan maintained a steady temperature that was well above the TCO activation temperature for the majority of the testing, as shown in Figure 48. The TCO did not activate, and staff manually terminated the test after 22 hours. Figure 49 shows radiographs of the TCO after the test. The linkage appears to have thinned out, but is still intact. The figure shows a bead had formed outside the TCO casing.

Figure 50 shows radiographs of the TCO before and after the test. From these angles, the thermal linkage appears not to have changed shape significantly, but depending on the viewing angle, the thermal linkage is thicker or thinner.

Figure 51 shows CT scans of the TCO after the test. CT scans of the TCO confirm the solder link within the TCO is intact. The radiographs and CT scans show a solder bead has formed outside the TCO casing. This would suggest that the TCO is no longer hermetically sealed when thermally aged or placed under thermal stress. The reason that the windings were operating at such an elevated temperature for so long without eventually breaking down is not known, but it can be surmised that the winding coating would eventually deteriorate and cause shorts within the winding because the eureka temperature has changed from  $T_f$ .

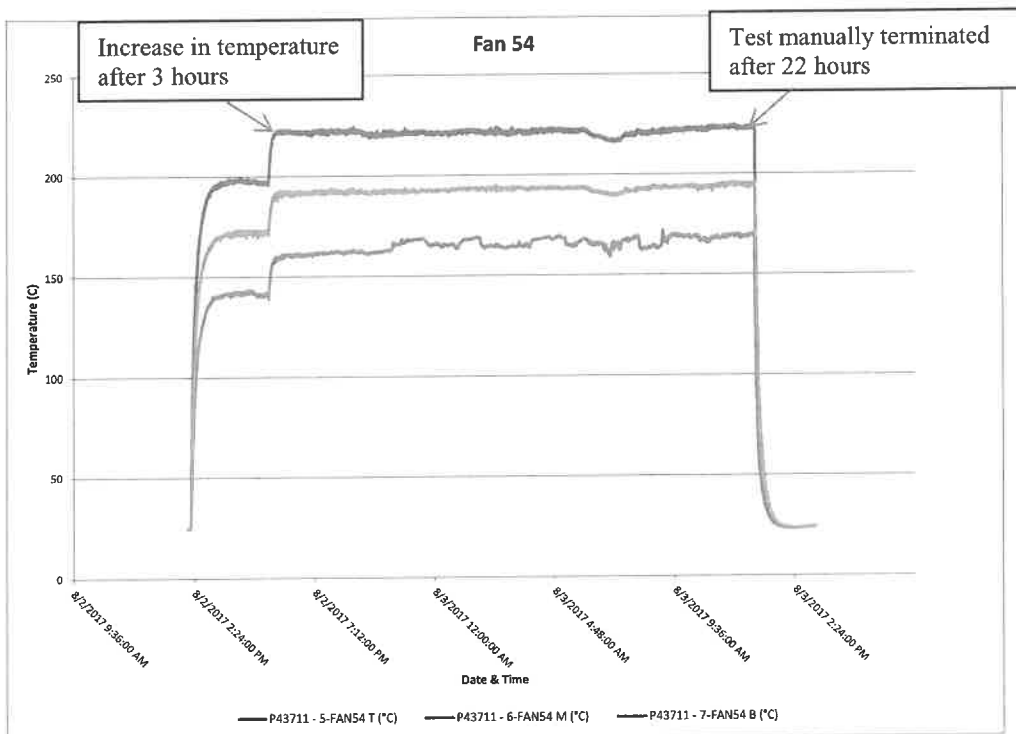


Figure 48. Winding temperatures during lock-rotor test for Fan sub 54

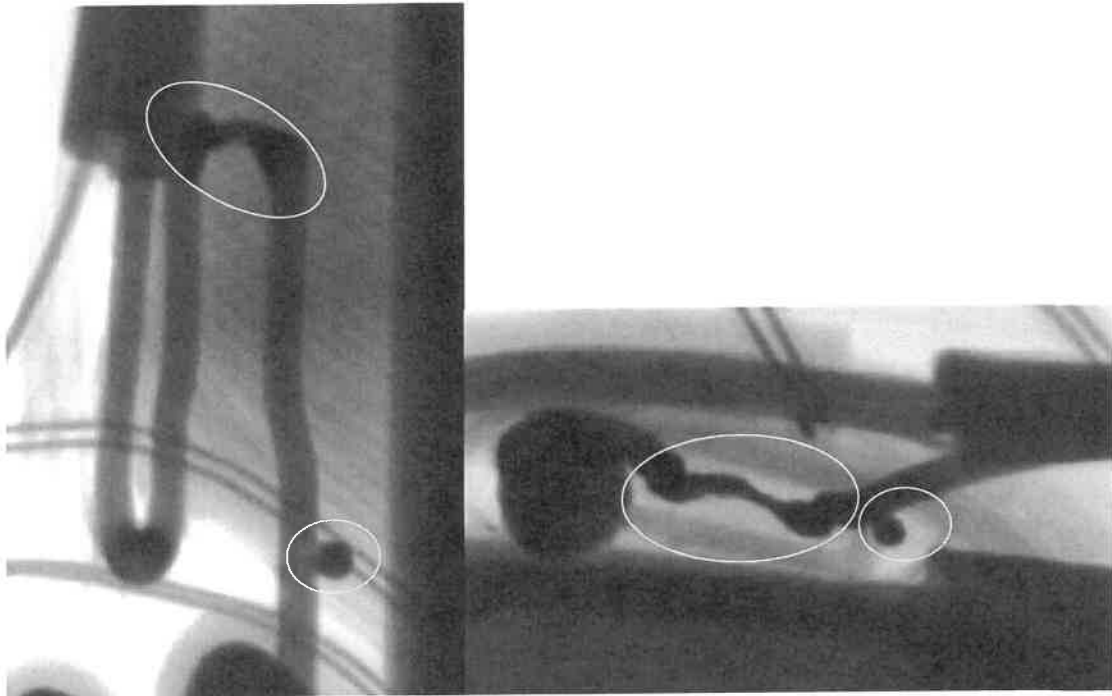
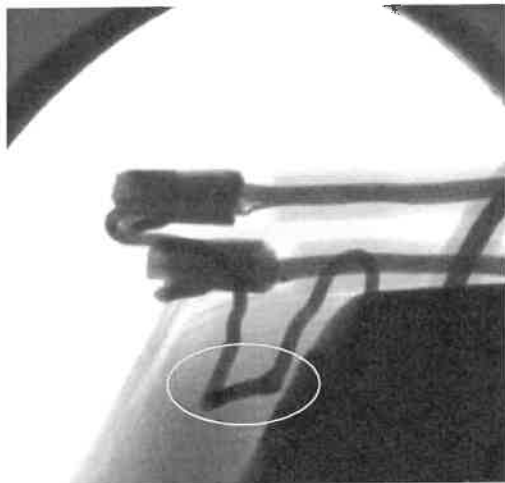


Figure 49. Radiograph of the TCO after the test (sub 54)



Before lock-rotor test



After lock-rotor test

Figure 50. Radiograph of the TCO before and after the test (sub 54)

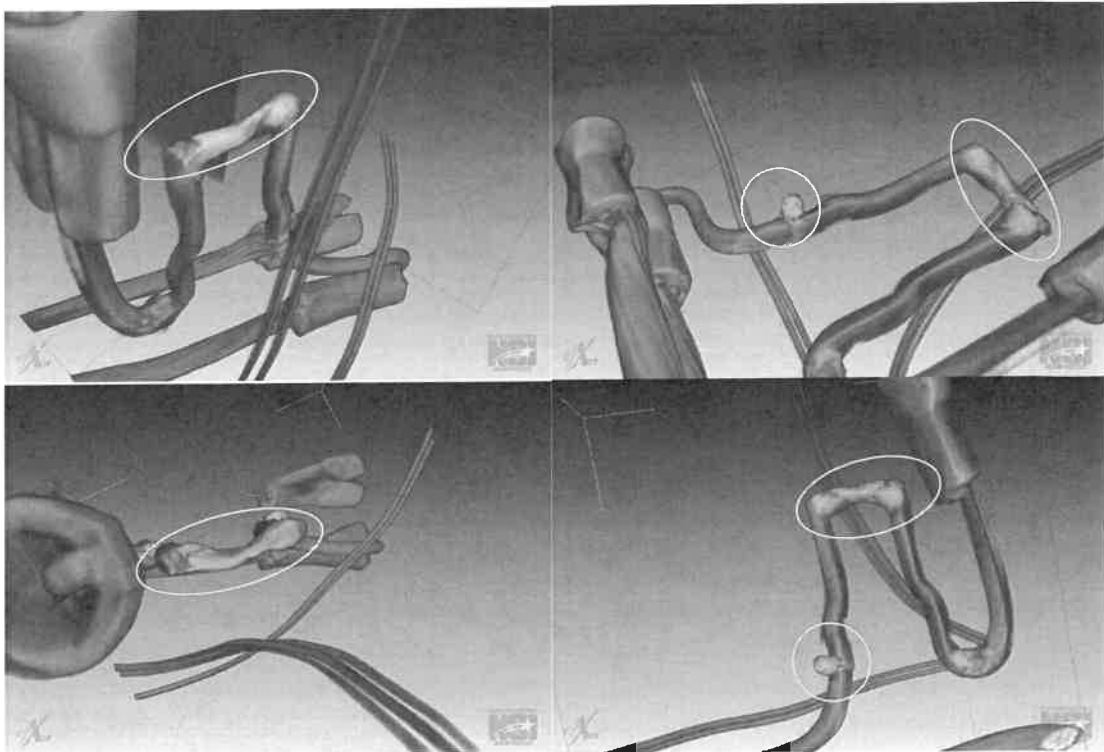
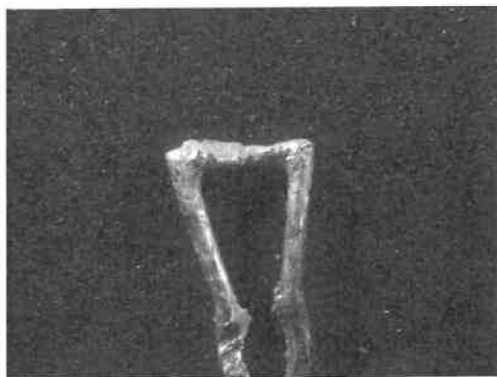


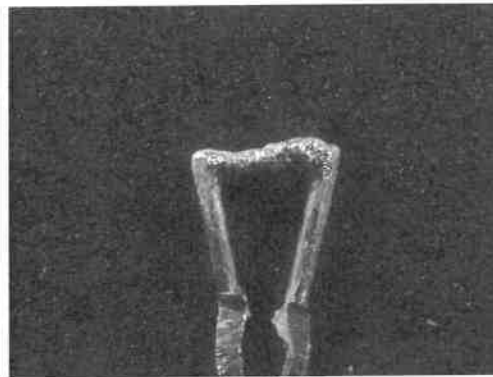
Figure 51. CT scans of the TCO after the test (sub 54)

## 6.0 Analysis of the Special Compound (Flux) and Solder Link

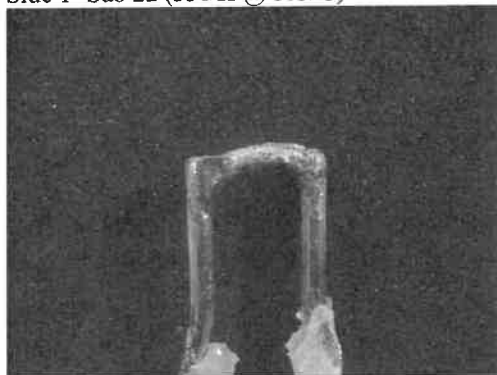
Subs 22 and 59 (conditioned for 330 hours at 105°C) from Test Group 5 were reserved for analysis of the solder link within the TCO. The TCO casing was opened and the internal components were removed. For comparison, two TCOs, sub 74 and 85 (no conditioning), from Test Group 7 were also reserved for TCO analysis where the TCO casing was opened and the internal components removed. Figure 52 shows the solder links from Fan subs 22 and 59, which have been conditioned 330 hours at 105°C. Figure 53 shows the solder links from Fan subs 74 and 85, which have not been conditioned. Sub 85 shows some deformation in the solder link, where part of the solder link has flattened and formed to the interior of the TCO casing, but this was already present before any conditioning of the TCO. The mechanical structure of the solder linkage appeared unchanged as a result of the conditioning, when the before and after radiographs were compared.



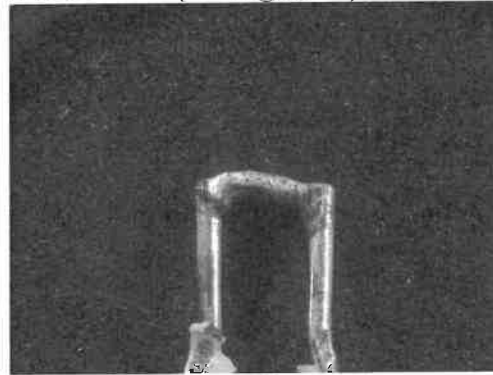
Side 1 - Sub 22 (330 H @ 105°C)



Side 2 - Sub 22 (330 H @ 105°C)

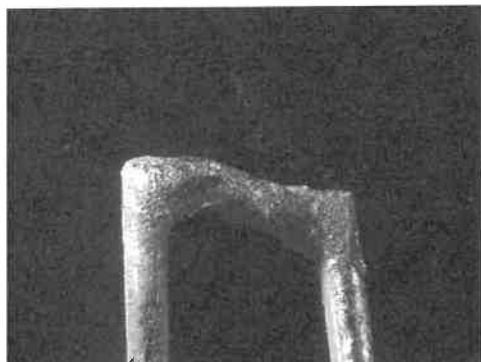


Side 1 - Sub 59 (330 H @ 105°C)

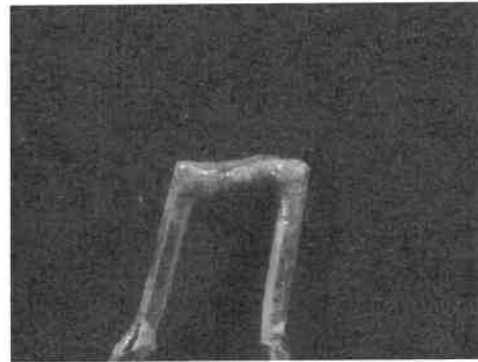


Side 2 - Sub 59 (330 H @ 105°C)

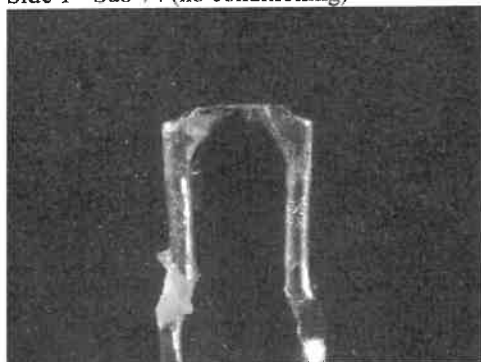
Figure 52. TCO solder link from Fan subs 22 and 59 (conditioned 330 hours @ 105°C)



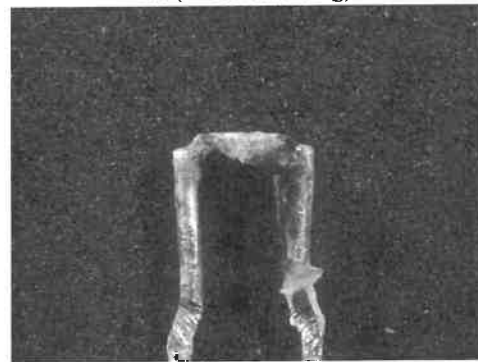
Side 1 - Sub 74 (no conditioning)



Side 2 - Sub 74 (no conditioning)



Side 1 - Sub 85 (no conditioning)



Side 2 - Sub 85 (no conditioning)

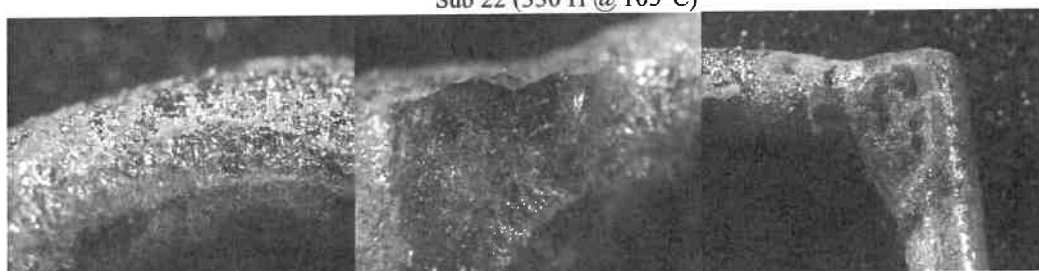
Figure 53. TCO solder link from Fan subs 74 and 85 (no conditioning)



Staff observed under a microscope that a yellowish substance was on the solder link, as shown in Figures 54 and 55. This was thought to be the special coating or flux material. Staff also observed that the conditioned TCOs appeared to have less of the yellowish substance than the TCOs that were unconditioned, but staff did not measure an actual mass content or volume of the substance for each sample.



Sub 22 (330 H @ 105°C)

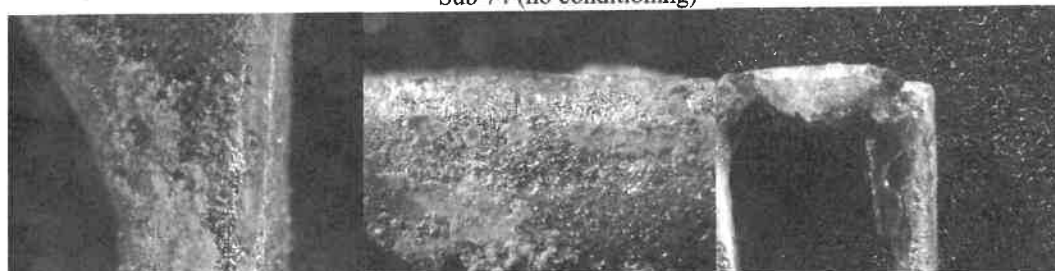


Sub 59 (330 H @ 105°C)

Figure 54. Close-up images of the TCO solder link (conditioned 330 hours @ 105°C)



Sub 74 (no conditioning)



Sub 85 (no conditioning)

Figure 55. Close-up images of the TCO solder link (no conditioning)

The TCOs were further explored using a scanning electronic microscope (SEM) and x-ray diffraction (XRD). SEM is used for topographical, compositional and morphological

characterization. XRD is used to study nature of phases/microstructure and their crystal structure. Figure 56 shows SEM scans of the solder link and terminals. SEM and XRD analysis for sub 59, which was conditioned at 105°C, show that the wire leads are copper and the thermal linkage is comprised of mainly tin, indium, and lead.

Area of interest 1 is the solder link. This is mainly comprised of carbon (C), oxygen (O), indium (In), tin (Sn), and lead (Pb). There is a trace amount of Silicon (Si). The indium, tin, and lead are most likely the elements that make up the solder link. Carbon and oxygen are most likely the elements that make up the special compound coating.

Area of interest 2 is the solder link connection to the copper terminal. This is mainly comprised of C, O, In, Sn and Pb. There is a trace amount of silicon (Si) and copper (Cu). Copper shows up because it is the bulk material of the terminal.

Areas of interest 3 and 4 are the copper terminals. This is mainly comprised of Cu and Sn. There are lower amounts of C and O.

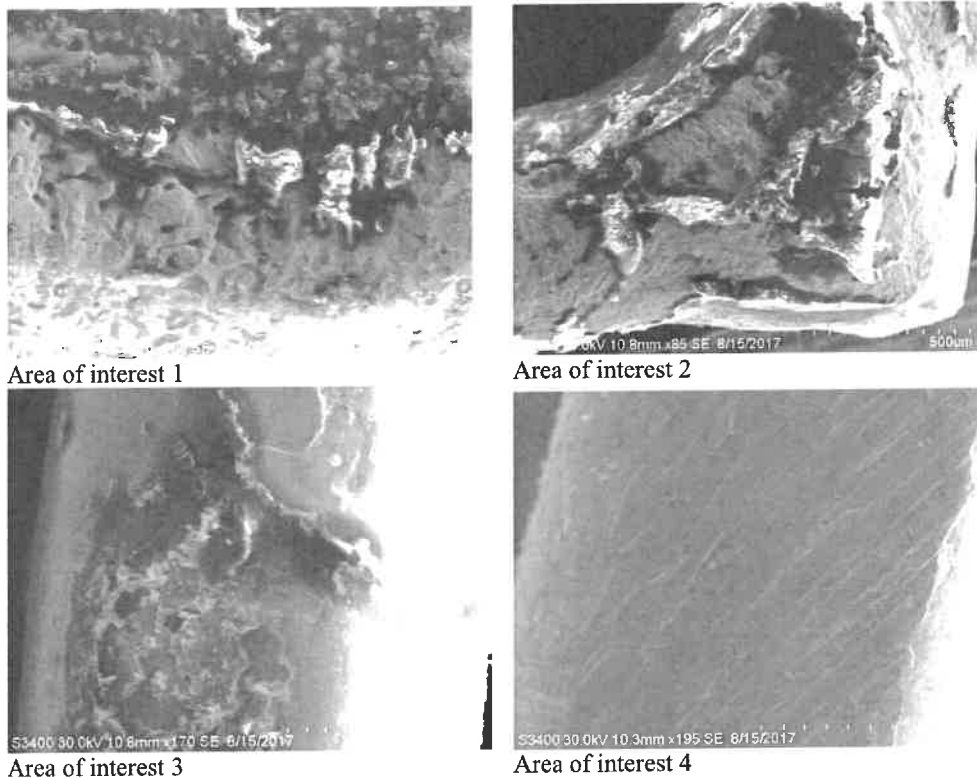


Figure 56. SEM scans for Sub 59

SEM analysis for sub 74, which was not conditioned, is shown in Figure 57. Area of interest 1 is the solder link. This is mainly comprised of C, In, Sn, and Pb. The Indium, Tin, and Lead are most likely the elements that make up the solder linkage. Carbon and Oxygen are most likely the elements that make up the special coating. Area of interest 2 is a close-up of an area from area interest 1. This is mainly comprised of C, O, In, Sn, and Pb. There is a trace amount of Si.

Areas of interest 3, 4, 5, and 6 are areas that had coating on the terminals or solder link.

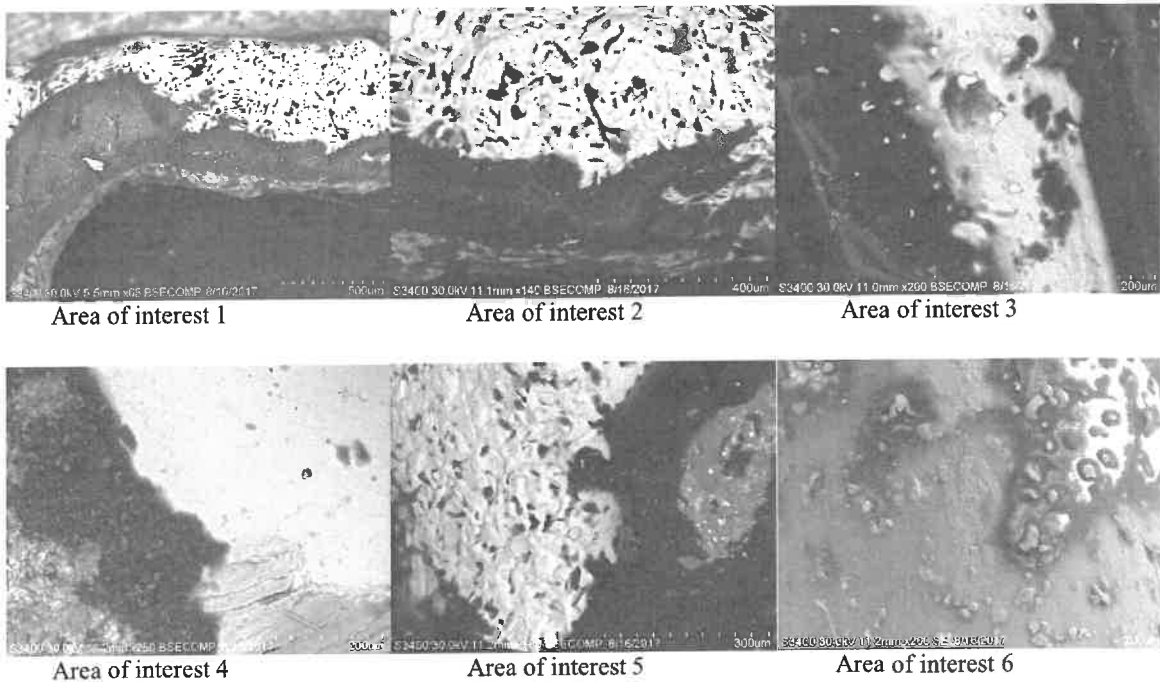
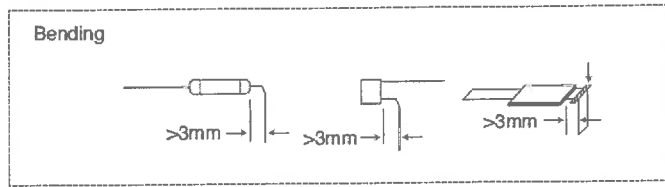


Figure 57. SEM scans for Sub 74

## 7.0 Bending and Forming TCO Leads (Design Applications - Forming and Cutting)

Staff conducted research to determine whether there is standard practice for bending the lead wires on TCOs. Below is a list of precautions in bending the wire leads. The general practice appears that the bend should occur 3 to 4 mm from the seal. It is also recommended that the wire lead is held during the bending to prevent stress on the seal, which may cause the seal to leak. Lock-rotor testing has shown that solder from the thermal linkage can seep out of the seal, forming a solder bead on the wire lead outside the casing. This would suggest that a crack has formed between the seal on the wire lead.

- Lead wires (terminals) are to be bent or cut at least 3mm away from the TCO seals to avoid damaging the TCO (axial/radial type) or body (thin type). The TCO seals (axial/radial type) shall not be grasped with any tools or holders. Terminals of thin type TCO are to be grasped before they are bent. (See Fig. 1) (Reference - XICON PASSIVE COMPONENTS, Thermal Cutoffs (TCO)/Thermal-Links 447-XYP 1BF145-RC).



- Lead wires (terminals) are to be bent or cut at least 3 mm away from the TCO seals to avoid damaging the TCO (axial/radial type) or body (thin type). The TCO seals (axial/radial type) shall not be grasped with any tools or holders. Terminals of thin type TCO are to be grasped before they are bent. (See Fig.1) (Reference - PANASONIC, Thermal Cutoffs (TCO))

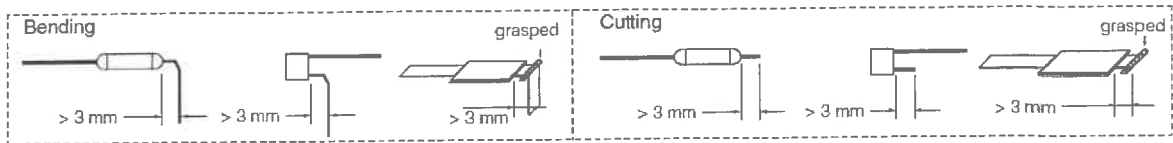


Fig-1

- When bending a lead wire for installation, fix the part of the lead between the body and the lead section to be bent using a tool, and gently bend the lead section that is at least 3 mm from the body. Never hold the body with a tool. (Reference - Bending Lead Wires – Cautions (<http://www.cci-tco.com/bending-lead-wires-cautions/>))
- When bending a lead, bend at a location 3mm minimum from the body of the thermal cutoff. See below. (Reference - Thermtrol, Mechanical Thermal Cutoffs (0.5 to 7 amp))
- Bend the lead wire at least 4 mm away from the molding. Otherwise, the damage of the molding worsens the airtightness and impedes the normal operation of the thermal fuse. Use a nipper or other tool to prevent damage. (Reference - SUNGWOO INDUSTRIAL, No.1 Thermal Cutoff Fuse Manufacturer in Korea | Sung Woo Industrial Co. – Precautions)
- When bending the lead wire, to avoid applying excessive pressure to the root of the lead wire, secure the lead wire close to the case, and bend the part beyond the secured section. The lead wire should be bent at a distance of 3 mm or more from the body of the fuse, and should not be twisted. (Reference - NEC/SCHOTT, Thermal Fuse)
- If the lead has to be used by bending it, bend it at approx. 3mm in minimum away from the molded section. Use radio pinchers to bend the wire, as shown in Fig.1 and not to damage the molded section of the case and the lead wire. (Reference - Xiamen SET Electronics Co.,Ltd, Thermal cutoffs (TCO))

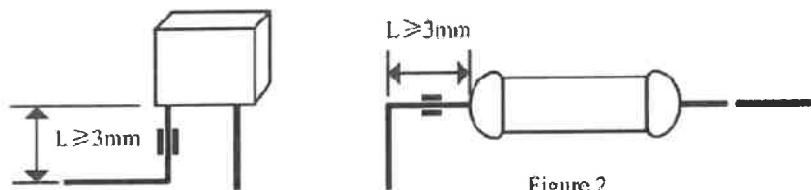


Figure 1

Figure 2

- Bend the lead wire at least 4 mm away from the seal. The damage of the sealant worsens the air tightness. Note that bending is conducted with care, since the worst air tightness impedes the normal operation of TCO. Holders or tools used during lead forming must not grasp the body, but lead wire. Doing so can protect from damage to the body of TCO. (Reference - US ELECTRONICS, INC, Thermal Cutoff Fuses)

UL 60691, *Thermal-Links – Requirements and Application Guide*, contains construction requirements under Section 9 – Mechanical Requirements. The section specifies that “Leads and terminal parts shall be secured so that stress on them during installation and normal use does not impair operation of the THERMAL-LINK. THERMAL-LINKS using seals with formed leads for use in appliances or components shall not be bent less than 3 mm from the THERMAL-LINK seal.” The section states that the leads are to be bent at least 3 mm from the seal, unless the following two exceptions are met:

Exception: Leads may be bent less than 3 mm from the seal, if

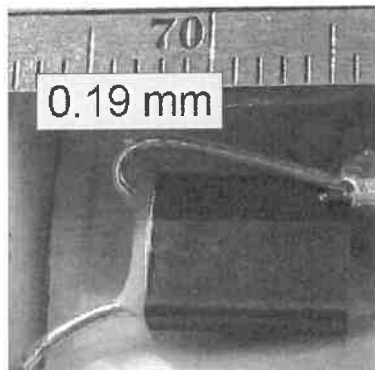
- a) the THERMAL-LINK manufacturer’s bending fixture and procedure does not transmit stress to the THERMAL-LINK operating mechanism, and
- b) formed test samples shall be subjected to the bending/twist lead secureness test of 9.4 and the RATED FUNCTIONING TEMPERATURE test of 11.2.

To determine the installation construction of the wire leads on the TCOs for the motor fan samples in this testing, 15 units were randomly selected from Test groups 1 and 2. These units all functioned when previously tested in the lock-rotor testing, and the testing should not have altered the TCO position and the wire lead positions and configuration. Table 10 lists the fan samples selected and the measured distances between the seal and the bend in the wire leads. Two of the 15 samples measured had wire lead lengths greater than 3 mm between the seal and the inside bend. The average length between the seal and inside bend in the wire lead was 1.28 mm. This suggests that the TCOs’ seal can be damaged during the bending of the wire leads, which can allow oxygen to enter into the TCO case. From the literature, damaged seals may alter TCOs’ functioning temperature.

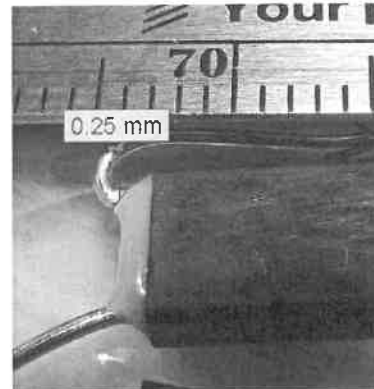
Table 10. Distance between the seal and the wire lead bend

|              | Sub # | Distance (mm) |
|--------------|-------|---------------|
| Test 1       | 60    | 4.14          |
|              | 98    | 0.19          |
|              | 52    | 1.10          |
|              | 27    | 4.52          |
|              | 36    | 0.56          |
|              | 89    | 0.52          |
|              | 35    | 0.55          |
| Test 2       | Sub # | Distance (mm) |
|              | 53    | 0.83          |
|              | 4     | 1.00          |
|              | 88    | 1.43          |
|              | 16    | 1.13          |
|              | 26    | 0.25          |
|              | 20    | 1.86          |
|              | 79    | 0.38          |
|              | 100   | 0.80          |
| Average (mm) |       | 1.28          |

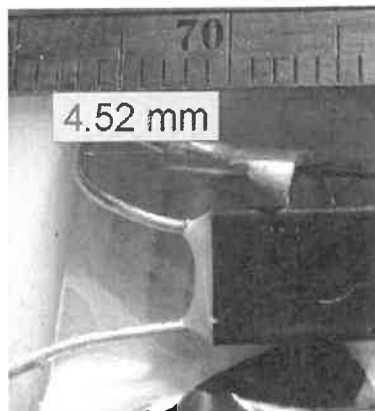
Figure 58 shows the TCO wire lead bends can vary between fan motors. Even though sub 27 shows the wire lead bend greater than 3 mm, it appears that the base of the wire lead near the seal was not secured when the wire lead was bent, which is evident by the outward angle of the wire lead.



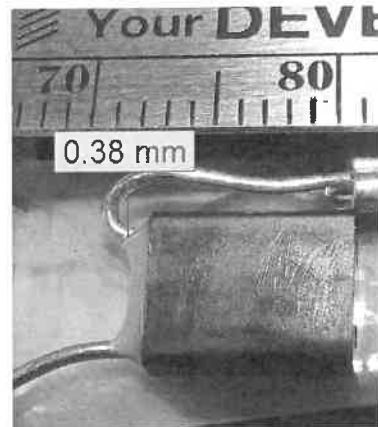
Wire lead with 0.19 mm length between the seal and bend (Sub 98)



Wire lead with 0.25 mm length between the seal and bend (Sub 26)



Wire lead with 4.52 mm length between the seal and bend (Sub 27)



Wire lead with 0.38 mm length between the seal and bend (Sub 79)

Figure 58. Wire bend lengths vary between TCOs in the Fan samples

## 8.0 Discussion

The CPSC lab testing of field samples supports that during the life of the fan motor, the eutectic thermal fuses may fail due to thermal aging, thus presenting a fire hazard. The observations indicate that exposure of the TCO to heat and oxygen over time may delay the opening, and in some cases, result in failure to open. Because the conditioning at 105°C over a period time did not change the thermal linkage shape, it is theorized that either the properties of the thermal linkage or the special compound that coats the thermal linkage can change with heat and time. The amount of special compound that coats the thermal linkage may also influence the effects of thermal aging, but this was not investigated.

Improper bending of the wire lead may result in cracking of the epoxy seal, thus allowing solder to flow out and oxygen to enter the TCO and alter the functioning temperature of the TCO. Oxygen along with heat and time may also be a combination that could be accelerating the changes in the properties for the thermal linkage and the special compound.

The testing of these motors showed that the winding temperatures can reach sufficiently high temperatures to ignite the motor during a lock-rotor condition, if the TCO fails to activate. During a lock-rotor condition for these tests, the TCO temperature may reach temperatures at or above 140°C before the TCO activates; thus, short periods of “on” time may thermally age the TCO and alter the functioning temperature of the TCO. Testing showed the TCO can experience temperatures up to 140°C in less than 20 minutes. Staff surmised that a fan entering into a lock-rotor condition may experience multiple events of thermal heating if the fan is not energized for sufficient time to cause the TCO to activate. These multiple heating events may have compounding effects on the TCO properties, thus causing the TCO to delay or fail to activate.

Figure 59 shows Fan sub 60 temperatures for normal and lock-rotor operation. In normal operations, the TCO temperature stabilizes at around 68°C. For lock-rotor condition, the TCO activates at a TCO temperature around 142°C after 20 minutes. This would suggest that an exhaust fan that is in lock-rotor condition, but is operated for less than 20 minutes, can have the TCO heated to temperatures up to 142°C. If the exhaust fan is operated for more than 3 minutes, the TCO is experiencing temperatures above normal operation.

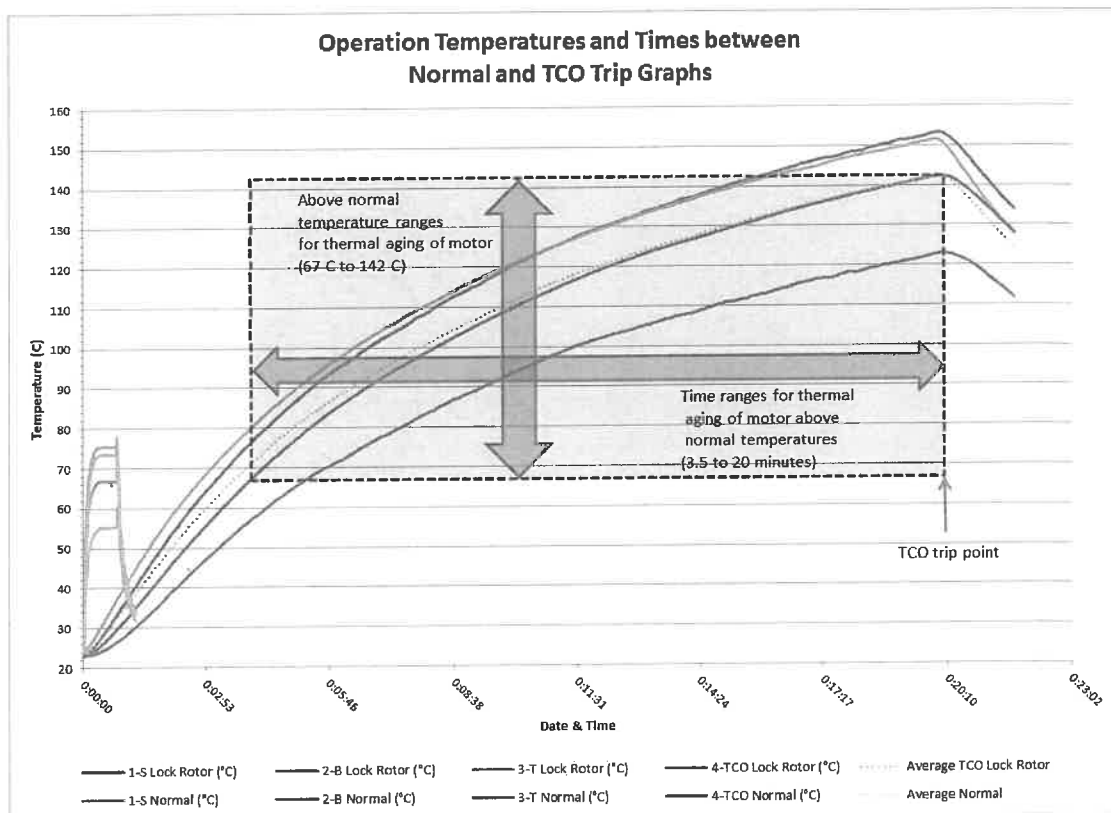


Figure 59. Potential thermal aging of the motor between normal and TCO trip conditions

### Aging in UL Standards

UL 60691, Thermal-Links – Requirements and Application Guide, Section 11, Temperature test addresses aging for thermal links. Similar to the Thermal-Element Stability Test that was in UL 1020, UL 60691 incorporates the same aging test. The Aging Tests assess whether aging at high temperatures has a deleterious effect on the thermal links. The TCO is subjected to a series of test steps where the conditioning temperature and period change. If a TCO trips, the remaining TCOs are tested at the next step. The test is considered successful if all TCOs have functioned after the first two steps. In summary, the six steps are as follows;

- Step 1 If requested by the manufacturer, the specimens are subjected to a temperature chosen between  $T_f - 15\text{ K}$  and  $T_h$  for a period of 3 weeks. At the conclusion of the test, at least 50 percent of the specimens shall not have functioned.



- Step 2 Tf – 15 K for 3 weeks. At the conclusion of the test, at least 50 percent of the specimens shall not have functioned, unless the specimens have already been submitted to Step 1, in which case all specimens may have functioned.
- Step 3 Tf – 10 K for 2 weeks.
- Step 4 Tf – 5 K for 1 week.
- Step 5 Tf – 3 K for 1 week.
- Step 6 Tf + 3 K for 24 hours.

UL 60691 specifies in Annex C, Conductive Heat Ageing Test. The test is conducted on thermal links with a  $T_f$  rating of 175°C or above and is optional for thermal links with a  $T_f$  rating less than 175°C. The section includes an exception, where the test does not need to be performed if the thermal link is eutectic type and is constructed without contacts. This test was most likely derived in the early 1990s when there were a high number of fire incidents with coffeemakers. To address TCOs failures that were being caused by thermal conductive heat aging, UL developed the Conductive Heat Ageing Test. The TCOs typically used in coffeemakers are higher-rated, pellet-type TCOs.

UL 507, *Standard for Electric Motors*, and UL 1004-3, *Standard for Safety Thermally Protected Motors*, do not account for thermal aging of the motor as a system before the motor is operated in lock-rotor conditions. As seen in the testing, the installation of the TCO and thermal aging may cause the TCO not to function at  $T_f$ . Thus, incorporating a performance aging test is a realistic evaluation of the system to verify whether aging at high temperatures, but at less than the functioning temperature, has a deleterious effect on the motor and its safety components. A fan that has entered into a lock-rotor condition may experience multiple events of thermal heating if the fan is not energized for sufficient time to cause the TCO to activate. These multiple-heating events may have compounding effects on the TCO properties, thus causing the TCO to delay or fail to activate.

## 9.0 Conclusion

Although the tested motors were compliant with the voluntary standard, consistent with their UL listing, thermal aging of the motors can cause the TCOs to fail to activate. A contributing factor to the failures may have been the improper bending of the TCO wire leads and cracking of the epoxy seal around the wire leads. During thermal aging, the melting properties of the solder linkage and the special compound in the TCO may be altered, which may cause a delay in the TCO activating and in some cases, failure to activate. If the TCOs in the motors fail to open during a lock-rotor condition, the motor may overheat and ignite.

The results of this testing support changes to UL 60691 to include conductive heat aging of all eutectic-type TCOs, incorporating a thermal aging performance test within UL 507. If similar motor applications have a sufficient operating window between normal and lock-rotor that could allow thermal aging of the motor such changes may also be appropriate to UL 1004-3.

About 25,200,000 results (0.63 seconds)

📺 WKRQ  
<https://www.wkrq.com/northwest-florida/ecfr-bath...>

### ECFR: Bathroom exhaust fan causes fire at Escambia ...

Jan 13, 2021 (WKRG) — Escambia County Fire Rescue say a faulty bathroom exhaust fan caused a fire at a duplex on Waveland St. Tuesday afternoon. Fire units ...

#### People also ask :

- Can bathroom vent fans cause fires? ▼
- What can cause a bathroom fan to catch fire? ▼
- Can exhaust fans cause a fire? ▼
- Is it OK to vent bathroom fan into attic in Florida? ▼

Feedback

📺 WTSP  
<https://www.wtsp.com/local/hillsboroughcounty>

### Tampa apartment set ablaze from bathroom exhaust fan ...

Feb 6, 2022 — TAMPA, Fla. — Hillsborough County Fire Rescue spent Sunday morning working to put out a fire at an apartment complex in Tampa.

📰 Sun Sentinel  
<https://www.sun-sentinel.com/broward/hallandale/fl...>

### Bathroom exhaust fan blamed for fire at Hallandale Beach ...

Aug 31, 2017 — A malfunctioning bathroom exhaust fan sparked a fire at a flower shop that left a firefighter injured, officials said.

📺 YouTube  
<https://www.youtube.com/watch>

### Bathroom vents: a hidden fire danger in your home - YouTube



In Mesa alone, Smith says there have been 22 confirmed fires linked to bathroom exhaust fans in the past 30 months including five since ...

YouTube - ABC15 Arizona Jun 16, 2017

📰 WFLA  
<https://www.wfla.com/news/national/lightning-bl...>

### Lightning blows up toilet after traveling through apartment ...

May 7, 2022 — No one was injured, but the toilet was "severely damaged," Fire Chief Dewayne Hurt wrote in a statement shared with Nexstar. The lightning first ...

📰 Sarasota Herald-Tribune  
<https://www.heraldtribune.com/news/2008/07/13/e...>

### Exhaust fan faulted in fatal fire

Jul 13, 2008 — A police spokesman said Saturday a faulty exhaust fan sparked a fire at a Tallahassee day-care center that killed a 4-year-old girl Friday.

Missing: florida | Show results with: florida

📰 Law.com  
<https://www.law.com/2022/09/22/goldberg-segalla...>

### Goldberg Segalla to Rep Broan-Nutone Over House Fire ...

Sep 22, 2022 — The case, for alleged property damage claims arising from a defective bathroom exhaust fan, was filed Aug. 8 in Pennsylvania Eastern District ...