

GENESIS VERTICAL PLATFORM LIFT:

Code Reference: ASME A18.1-2008 "Safety Standard for Platforms Lifts and Stairway Chairlifts"

General: Color - Standard (Aluminium extrusions with 16 ga. galvanized steel panels powder coated Silver Moon)  
 Indoor Unit - Pit Mount  
 Number of Stops - Two Stop Kit

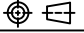

Drive Mast Model - GVL-SW-144  
 Chain Hydraulic drive system c/w Continuous Mains Power with Auxiliary Battery Power System, Platform Emergency Lowering (shipped loose), Shoring Pin, & Pressure Gauge  
 Motor - 2.2 kW, (3.00 HP), 24 VDC  
 Travel Speed - 340 kg @ 5.2 m/min [750 lb @ 17 ft/min]  
 Power Supply - 120 VAC, single phase, 60 Hz, on a dedicated 15 amp. circuit  
 Equipped with - Pit Switch Kit, Oil Recovery System, Split Mast Kit

Controls: Platform Controls - Rocker Type c/w Rocker (Toggle) Switch and Illuminated Round (push/pull) Emergency Stop Switch/Audible Alarm  
 Lower Landing Call Station - Rocker Type Frame Mount  
 Upper Landing Call Station - Rocker Type Frame Mount  
 Equipped with - Keyed Operation Kit

Platform: Size - Standard c/w grab rail, anti-skid deck and 1100mm [43 1/4"] high walls  
 Configuration - On/Off Same Side (360°) Exit/Entry  
 Capacity - Maximum 340 kg [750 lb] operating load

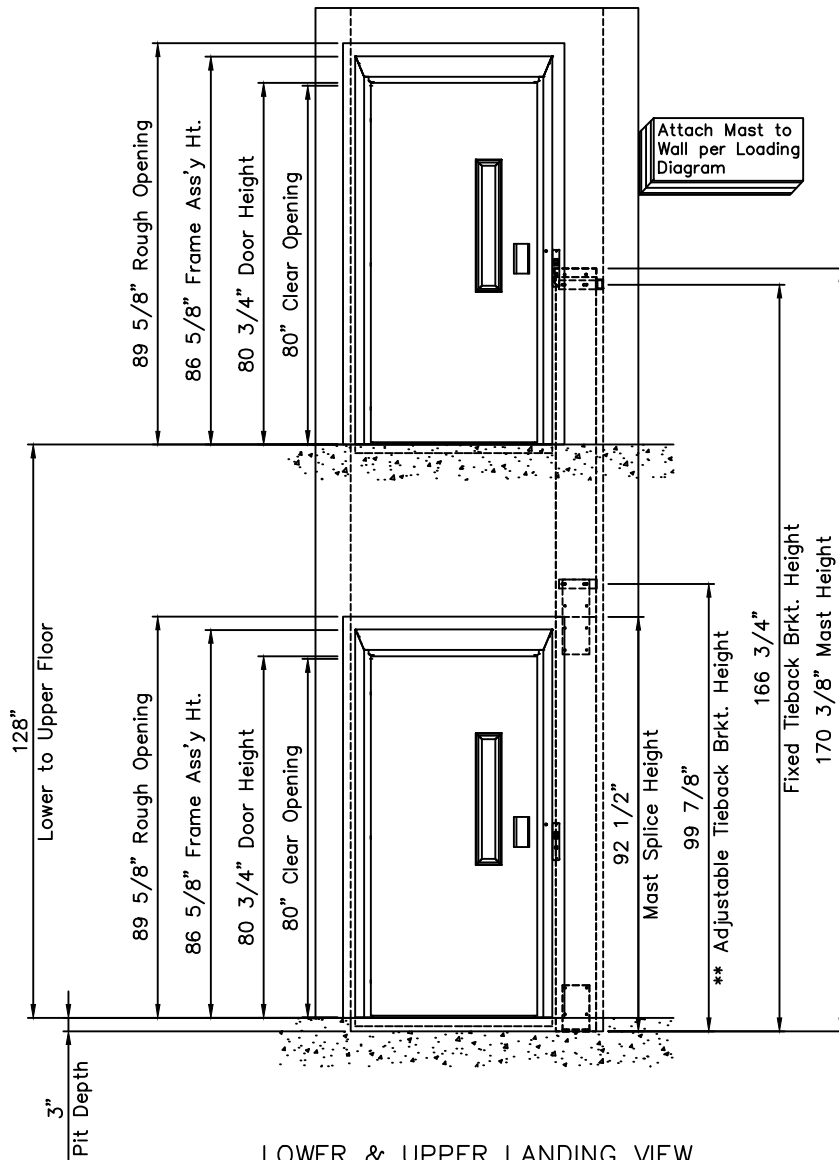
Door/Gates: Lower - 36" R.H. Clear Width, Pro-Door (fire-rated) c/w Prudhomme Interlock & Concealed Gara PDO 2  
 Upper - 36" R.H. Clear Width, Pro-Door (fire-rated) c/w Prudhomme Interlock & Concealed Gara PDO 2

SHAFTWAY: Total Unit Weight - Approximately 773 lb [351 kg]  
 Lifting Ht. (H1) - 3251mm [128"] lower to upper floor plus 76mm [3"] deep pit  
 Equipped with - Anchor & Shim Kit, Tie Back Rail Kit (x2)

A	INITIAL RELEASE	UNITS: INCHES	JAN/31/22	AU	
REV.	SCALE: 1:40	TOLERANCES: DIMENSIONAL ±1/32 ANGULAR ±0.5°	PROJECTION: 	DATE	DRN.BY
 18920 36TH AVENUE SURREY, BC, CANADA V3Z 0P6 PH: ++1 604 594 0422 FAX: ++1 604 594 9915 http://www.garaventalift.com		GENESIS SHAFTWAY - iGOLDD DRAWING 266 CORAL WAY 266 CORAL WAY CORAL GABELS FL 33134 PAGE 1 OF 4 Garaventa Lift Florida			71579-IG-A

LIFT HEIGHT  
H1=131"

H1=Floor to Floor + Pit Depth



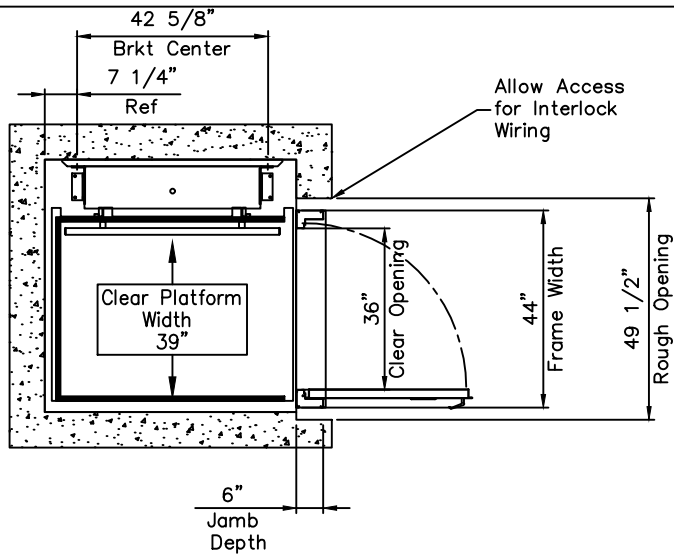
A	INITIAL RELEASE	UNITS: INCHES	JAN/31/22	AU	
REV.	SCALE: 1:40	TOLERANCES: DIMENSIONAL ±1/32 ANGULAR ±0.5°	PROJECTION:	DATE	DRN.BY CHK.BY



18920 36TH AVENUE  
SURREY, BC, CANADA V3Z 0P6  
PH: ++1 604 594 0422  
FAX: ++1 604 594 9915  
<http://www.garaventalift.com>

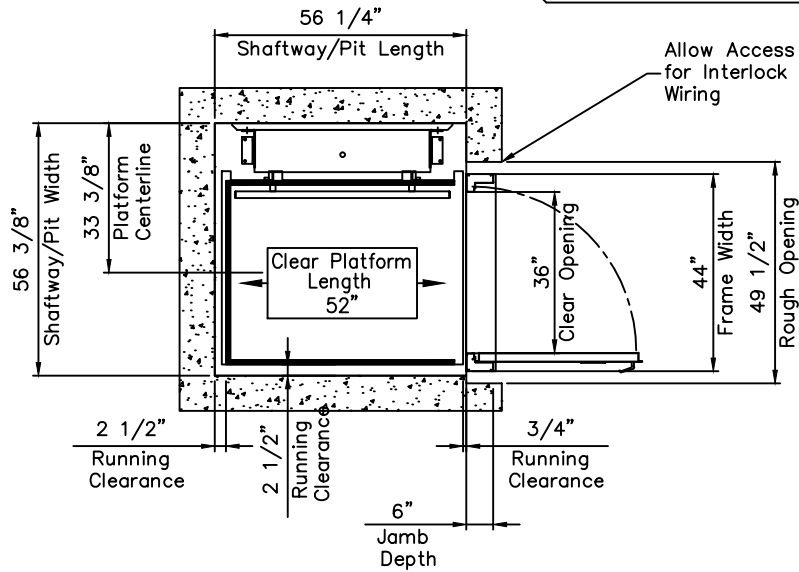
GENESIS SHAFTWAY - iGOLDD DRAWING  
266 CORAL WAY  
266 CORAL WAY  
CORAL GABELS FL 33134 PAGE 2 OF 4  
Garaventa Lift Florida

71579-IG-A




UPPER LANDING PLAN VIEW

**⚡ DEDICATED CIRCUIT SUPPLIED BY OTHERS:**  
 120 VAC / 1 PHASE – 60 Hz.  
 Conduit and devices to suit local codes and  
 a recommended 15 amp. dedicated circuit.



LOWER LANDING PLAN VIEW

A	INITIAL RELEASE	UNITS: INCHES	JAN/31/22	AU	
REV.	SCALE: 1:40	TOLERANCES: DIMENSIONAL $\pm 1/32$ ANGULAR $\pm 0.5^\circ$	PROJECTION:	DATE	DRN.BY
 18920 36TH AVENUE SURREY, BC, CANADA V3Z 0P6 PH: ++1 604 594 0422 FAX: ++1 604 594 9915 <a href="http://www.garaventalift.com">http://www.garaventalift.com</a>		<b>GENESIS SHAFTWAY – iGOLDD DRAWING</b> 266 CORAL WAY 266 CORAL WAY CORAL GABELS FL 33134 PAGE 3 OF 4 Garaventa Lift Florida			71579-IG-A

SYM.	DESCRIPTION	VALUE (MAX.)	
F1 =	1000 lb or 4448 N	PAYLOAD (MAX.)	3335 N [750 lb]
		CAR (PLATFORM) WEIGHT	1110 N [250 lb]
F2	MAST WEIGHT	2335 N [525 lb]	
F3	FLOOR REACTION	3394 N [763 lb]	
F4	FLOOR REACTION	3394 N [763 lb]	
F5-1	TIEBACK REACTION #1	801 N [180 lb]	
F5-2	TIEBACK REACTION #2	801 N [180 lb]	

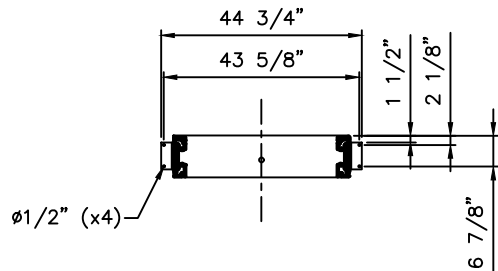
L1	L2	L3	PLATFORM SIZE
764 [30.08"]	61 [2.40"]	122 [4.88"]	STANDARD

MODEL	MAST HEIGHT	TIEBACK HEIGHT
144"	4327 [170.38"]	4234 [166.7"]
		2537 [99.88"]

**SPECIAL NOTE:**

These are reaction forces generated by the lift. Adhere to local building codes, regulations, and safety factors for supporting structures. Consult a structural engineer or architect in your jurisdiction.

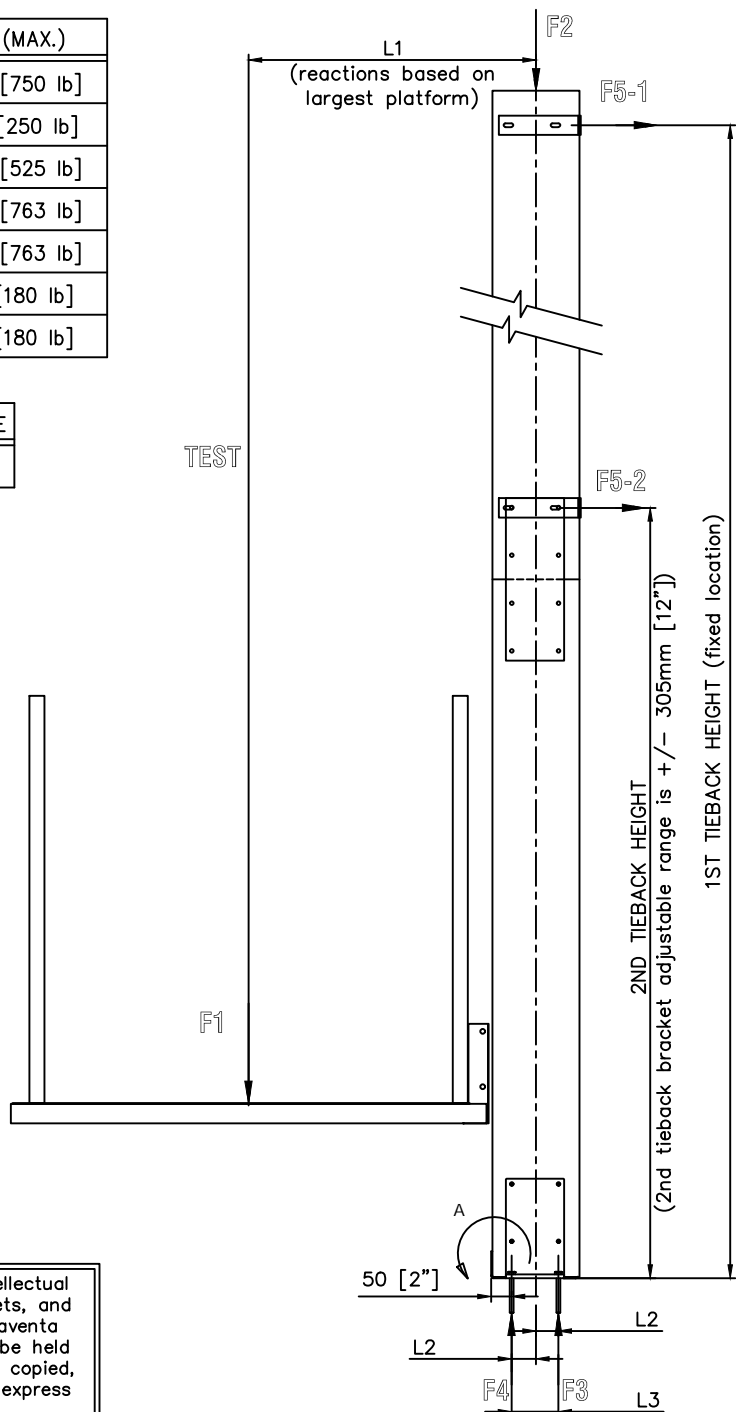
**BASE MOUNTING DETAILS**



The information contained in this drawing constitutes the Intellectual Property, including, but not limited to, knowledge, trade secrets, and proprietary information which is the exclusive property of Garaventa Accessibility. All information contained in this drawing is to be held in the strictest confidence by the recipient, and is not to be copied, disclosed to, or transmitted to any third parties without the express written authorization of Garaventa Accessibility.

© 2005 GARAVENTA ACCESSIBILITY.

**DETAIL 1 – SHAFTWAY MODEL LOADING DIAGRAM**



A	INITIAL RELEASE	UNITS: INCHES	JAN/31/22	AU
REV.	SCALE: 1:40	TOLERANCES: DIMENSIONAL ±1/32 ANGULAR ±0.5°	PROJECTION:	DATE DRN.BY CHK.BY



18920 36TH AVENUE  
SURREY, BC, CANADA V3Z 0P6  
PH: ++1 604 594 0422  
FAX: ++1 604 594 9915  
http://www.garaventalift.com

GENESIS SHAFTWAY – iGOLDD DRAWING  
266 CORAL WAY  
266 CORAL WAY  
CORAL GABELS FL 33134 PAGE 4 OF 4  
Garaventa Lift Florida

71579-IG-A