

ELEVATOR SUBMITTAL PACKAGE

Date Submitted: **JANUARY 29, 2025**

For Project:

101 FRANKLIN ST

TK Elevator Job Number: **1777-244-01A**

**REVISE AND RESUBMIT
DRAWINGS**

Elevator(s): **1 (SIMPLEX)**

FOR APPROVAL

Located At:

**101 FRANKLIN ST
TAMPA, FL 33602**

Company (Mail To):

--[N/A]--

--[N/A]--

--[N/A]--

GC Phone:

Attention:

--[N/A]--

INSTRUCTIONS

Failure to complete the Contractor Verification Sheet and Approve drawings WILL result in delay of fabrication and shipping of equipment.

Check ALL hoistway dimensions, elevator travel (floor to floor heights), pit depth, clear over-head, machine room dimensions and entrance wall thickness. Mark-up drawings accordingly, and remit with necessary approval (i.e: approved or approved as noted) to the Local TK Elevator Office.

Complete all information on the Contractor Verification Sheet.

Provide a firm on-site date to the Local TK Elevator Representative.

Any previously quoted manufacturing lead-times for material delivery, shall begin the date of receipt by TK Elevator of ALL approvals, confirmations, and a fully executed subcontract agreement. The installation start date cannot be any earlier than the delivery of the material to the site and the completion of all items shown on the Pre-Installation Checklist sent to you in this submittal package.

INFORMATION

"ALL DEPICTIONS, DIMENSIONS, MEASUREMENTS AND ALL OTHER INFORMATION CONTAINED IN THESE DRAWINGS ARE FOR ILLUSTRATION PURPOSES ONLY. THE CONSTRUCTION MANAGER AND/OR GENERAL CONTRACTOR BEARS FULL RESPONSIBILITY TO PROPERLY BUILD THE NECESSARY HOISTWAYS, CONTROL-ROOMS, AND/OR MACHINE-ROOMS TO ACCOMMODATE THE ELEVATOR EQUIPMENT PURCHASED." IN NO EVENT WILL TK ELEVATOR CORPORATION BE LIABLE FOR ANY INCIDENTAL, CONSEQUENTIAL, OR INDIRECT DAMAGES (INCLUDING BUT NOT LIMITED TO, DAMAGES FOR LOSS OF PROFITS, DELAY, BUSINESS INTERRUPTION,) ARISING OUT OF THE USE OF THESE DRAWINGS, THE INABILITY TO USE THESE DRAWINGS (INCLUDING ANY INFORMATION CONTAINED THEREIN), OR ANY TRANSACTIONS RELATED TO THE USE OF THESE DRAWINGS. BECAUSE SOME STATES DO NOT ALLOW THE EXCLUSION OR LIMITATION OF LIABILITY FOR CONSEQUENTIAL OR INCIDENTAL DAMAGES, THE ABOVE LIMITATION MAY NOT APPLY TO YOU. IN SUCH STATES, TK ELEVATOR CORPORATION'S LIABILITY IS LIMITED TO THE GREATEST EXTENT PERMITTED BY LAW.

REMITTANCE INFORMATION:

PLEASE REMIT ELECTRONIC COPY OF ALL CONFIRMATIONS AND APPROVALS TO:

TO: VLADIMIR ZAVALA

EMAIL:

PHONE: 800-683-8880

CONTACT INFORMATION:

Sales Representative:	VLADIMIR ZAVALA	800-683-8880	
Construction Superintendent:	JIM MATTEO	800-683-8880	
Project Manager:		800-683-8880	

General Contractor Owner Job-Site Pre-Installation Checklist (See G.C. Site Binder)

PACKAGE CONTENT:

Contractor Verification Sheet

Instruction and Information Sheet

Approval/Approved Sheet

Layout Sheet

Entrance Sheet(s)

- The enclosed submittals are in compliance with conditions of TK Elevator's subcontract or supplying and installing materials and or systems for the project referenced above.

- Enclosed drawings are for approval purposes only and not to be used for construction.

Architect/GC Verification Form

FACTORY JOB NUMBER:

ELEVATOR DESIGNATION 1

REQUIRED CAB INFORMATION

CAB WALL COLOR: <POWDERCOATED>
 CAB CEILING FRAME FINISH COLOR: <POWDERCOATED>

NOTE (Elevator platform will be designed to accomodate 3/8" flooring)
 NOTE (Elevator flooring is by others. Not included in material order)

DESCRIPTION OF SELECTED CAB FEATURES

CAB TYPE:	FLAT STEEL WALLS (TKS)
CAB CEILING:	SUSPENDED CEILING WITH LED LIGHTING
CAB DOOR:	#4 STAINLESS STEEL
CAR SILLS:	ALUMINUM
CAB HANDRAIL(S):	(1) 1/4" X 2" CONTINUOUS FLAT BAR
HANDRAIL(S) FINISH:	#4 STAINLESS STEEL
CAB PROTECTION:	PAD BUTTONS PROVIDED. (1) PADS
CAB FLOORING:	FINISH FLOOR WEIGHT (3/8" MAX. THICKNESS) = 200 LBS. BY OTHERS

FEATURES FOR YOUR FIXTURES

POSITION INDICATOR ILLUM: BLUE
 VANDAL RESISTANT LED COLOR: BLUE LED

REQUIRED ENTRANCE INFORMATION

FLOOR MARKING:	WALL TYPE:	WALL THICKNESS (X):	ENTRANCE DOOR FINISH:	ENTRANCE FRAME FINISH:
2	<WALLTYPE>	<WALLTHK>	<POWDERCOAT>	<POWDERCOAT>
1	<WALLTYPE>	<WALLTHK>	<POWDERCOAT>	<POWDERCOAT>

REQUIRED POWER CONFIRMATION

PLEASE CONFIRM THE FOLLOWING INFORMATION

BUILDING POWER: 208 VOLTS A.C., 3 PHASE, 60 CYCLES CONFIRMED

STARTING TYPE: SOLID STATE STARTING

CORRECTED: VOLTS: <VLT> PHASE: <PH> CYCLES: <CYC>

EMERGENCY POWER VERIFICATION

THIS ELEVATOR HAS BEEN PROVIDED WITH THE FOLLOWING

BACK UP POWER PROVISIONS: 10_D_O_C CONFIRMED

CORRECTED: <QTYELEV>

Line 1: ***Note*** Jamb Mounted controllers have AUX contacts provided by TK Elevator. For Machine Room applications AUX contacts are to be provided by others.

CUSTOMER APPROVAL BOX

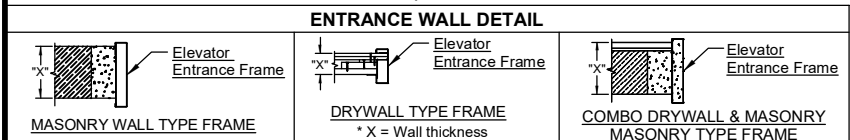
- NET TRAVEL: CONFIRMED CORRECTED REQUIRED
- PIT DEPTH: CONFIRMED CORRECTED REQUIRED
- HAND OF DOOR: CONFIRMED CORRECTED REQUIRED
- CLEAR OVERHEAD: CONFIRMED CORRECTED REQUIRED
- HOISTWAY SIZE: CONFIRMED CORRECTED REQUIRED
- MACHINE ROOM WIDTH: CONFIRMED CORRECTED REQUIRED
- MACHINE ROOM LENGTH: CONFIRMED CORRECTED REQUIRED

*****NOTE*** IF CORRECTIONS ARE REQUIRED PLEASE NOTE ON CORRESPONDING SUBMITTAL DRAWINGS BELOW**

MAIN EGRESS FLOOR (Fire Service): <MAINEGRESS>

ALTERNATE FLOOR (Fire Service): <ALTEGRESS>

NOTE GC to provide frame size. Please reference the (x) dimension noted below for wall size.
 NOTE Jamb Mounted Controllers Require a Minimum wall thickness of 8 1/2" at the controller landing.



MATERIAL RELEASE FORM

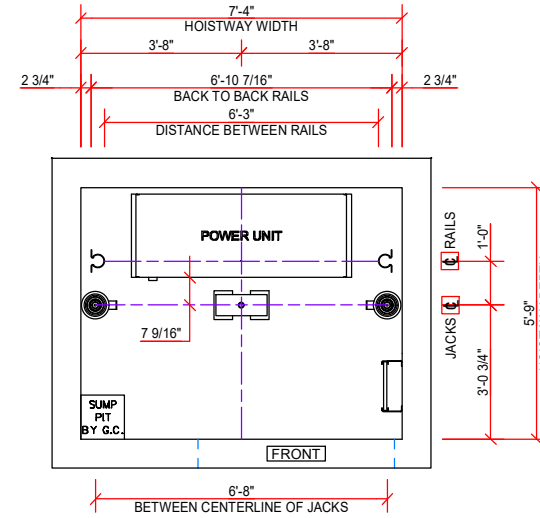
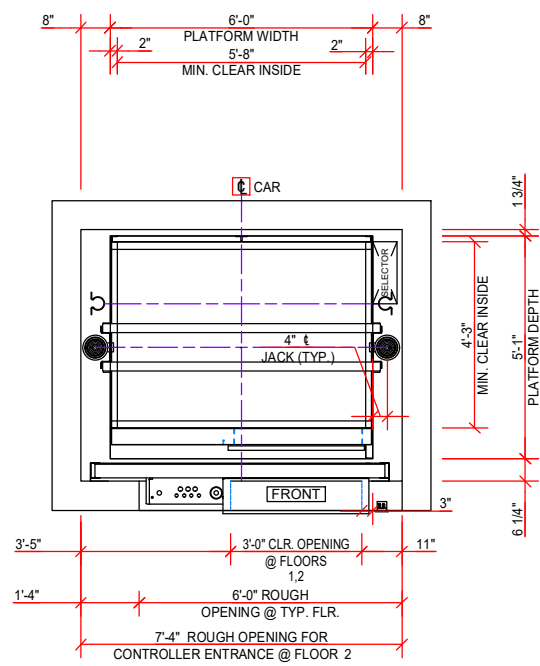
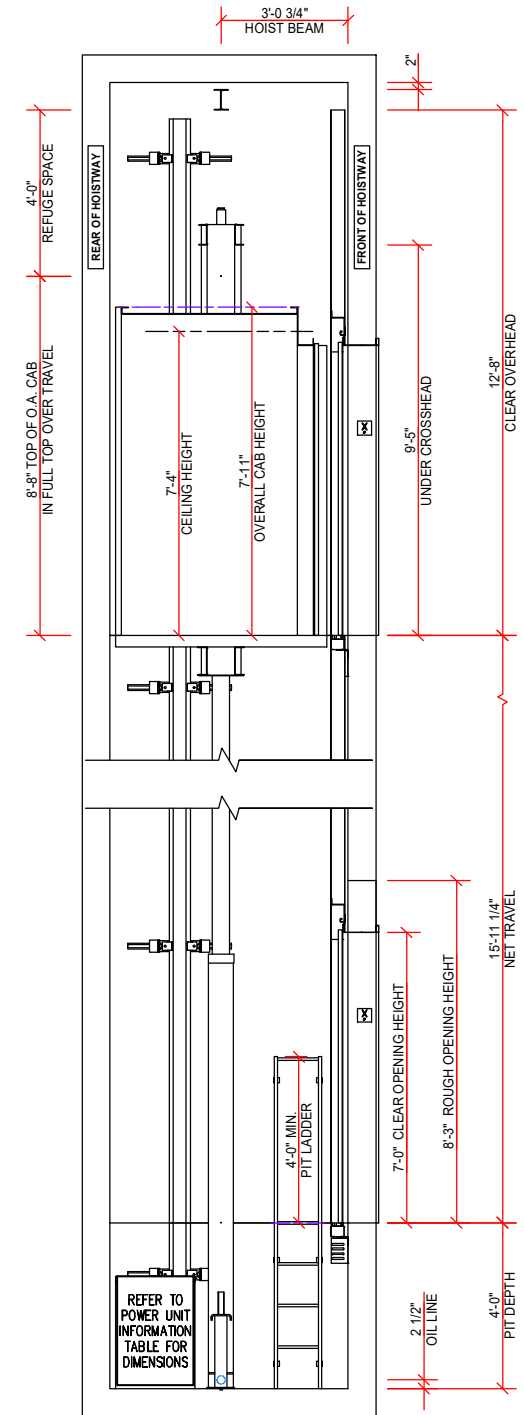
Requested Elevator Material Delivery/Start Date: <MNT> / <DAY> / <YR>
 (Delivery of all remaining material, less any early shipment)

APPROVED BY: <APPROVALSHEETSIGNATURE> DATE: <APPROVALSHEETDATE>
FAILURE TO FULLY COMPLETE THIS SHEET MAY RESULT IN DELAY OF SCHEDULE

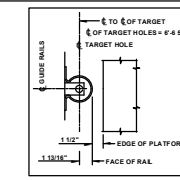
PROVISIONS FOR TWO LIFELINE ATTACHMENTS, INDEPENDENT OF HOIST BEAM, (BY G.C.) RATED FOR 5,000 LB [22.2KN] EACH PER OSHA 1926.502(d), LOCAL REGULATION REQUIREMENTS LOCATED ABOVE THE TOP LANDING IN THE OVERHEAD

POWER UNIT INFORMATION			
WIDTH	DEPTH	HEIGHT	WEIGHT W/OIL (LBS)
5'-0 1/2"	1'-10 15/16"	2'-9"	1,675
HYDRAULIC FLUID REQUIRED IN SYSTEM = 77 GALLONS			
HEAT PRODUCED BY ELEVATOR EQUIPMENT IN HOISTWAY = 8684 BTU/HR			
OIL LINE NOTE			
2" OIL LINE FROM TANK TO 2" SHUTOFF VALVE, 2" SCH 40 BLK PIPE, ASTM A-53, TYPE E OR S, GRADE B OR EQUIVALENT TO JACK.			

HYDRAULIC ELEVATOR CONTRACT DATA		
TYPE:	endura 21 A	ELEVATOR DESIGNATION: 1
SPEED:	110 FPM UP / 135 FPM DOWN	CAPACITY: 2,100 LBS
CAR ENCLOSURE:	TKS	DOOR HAND: RIGHT FRONT
PLATFORM THICKNESS:	3 3/8"	FINISHED FLOOR: BY OTHERS
CAR WEIGHT:	2,215.00 LBS	
TELEPHONE:	BY ELEVATOR COMPANY	PIT LADDER: BY ELEVATOR COMPANY
POWER UNIT:	EM-95, 20 HP	POWER SUPPLY: 208 V 3 Phase 60 Cycles
STARTING:	SOLID STATE STARTING	OPERATION: TAC32
GLOJ:	4,315 LBS	GLOPU: 4,835 LBS
OVER TRAVEL:	BOTTOM: 8 1/2" TOP: 9"	PLUNGER WEIGHT: 520.00 LBS
JACK MODEL:	2.5T TWIN/TELE	PLUNGER LENGTH: UPPER: 13'-7 5/8" LOWER: 10'-2 1/16"
PLUNGER LENGTH:	UPPER: 13'-7 5/8" LOWER: 10'-2 1/16"	PLUNGER WALL THK: UPPER: 0.375" LOWER: 0.25"
PLUNGER O.D.:	UPPER: 2.5" LOWER: 3.75"	PLUNGER O.D.:
CYLINDER LENGTH:	10'-2 1/2"	CYLINDER O.D.:
NET AREA:	15,904 SQ.IN.	WALL THK: 1/4"
BOTTOM CAR RUNBY:	6"	BETWEEN PIT FLOOR & CAR BOLSTER ON COMPRESSED BUFFER: 2'-3 7/8"
EST. WORKING PRESS:	334 PSI	CAR BUFFER STROKE: 2 1/2"
(QTY) SPRING(S) #:	(1) 780CB1	TOTAL SPRING(S) CAPACITY: 15,223 LBS
JACK REACTION (EA.):	5,118.00 LBS	CAR BUFFER REACTION: 11,886.00 LBS
CAR FRAME	S = 3.27 FORMED I = 9.82 CROSSHEAD A = 1.85 7GA x 6" x 2 1/2"	S = 5.67 FORMED I = 23.39 BOLSTER A = 2.40 7GA x 8 1/4" x 2 3/4"
RAIL FORCES	F1 = 289 LBS	F2 = 194 LBS
SEISMIC RAIL FORCES ZONE:	F1 = N/A	F2 = N/A
CAR STATION FEATURES:	Traditional Fixtures, Tamper Resistant Stainless Steel Buttons, Alarm Button, Telephone, Position Indicator	
PUSH BUTTON MARKINGS:	1, 2	
CAR RIDING LANTERN:	Both	
NOTE A:	OIL PIPE LINES AND FITTINGS SHALL BE PROPERLY SUPPORTED TO RELIEVE STRAIN.	
NOTE B:	ALL REACTIONS INCLUDE ALLOWANCE FOR IMPACT.	
NOTE C:	TK ELEVATOR TO BE NOTIFIED OF ANY CHANGE TO ELEVATOR HOISTWAY OR MACHINE ROOM DESIGN.	
NOTE D:	ELEVATOR DESIGN & FABRICATION BASED ON ESTIMATED CAB WEIGHT SHOWN. LAYOUT APPROVAL WILL BE CONSTRUED AS FINAL CAR WEIGHT, UNLESS OTHERWISE NOTIFIED.	



POSITION OF SUMP PIT OR DRAIN CANNOT BE RELOCATED
RETRACTABLE PIT PROP SYSTEM TO BE PROVIDED



BY OTHERS

THE FOLLOWING CONDITIONS MUST BE MET BEFORE INSTALLATION IS COMPLETED AND ARE NOT INCLUDED IN THE ELEVATOR CONTRACT

ELECTRICAL DATA

- GENERAL CONTRACTOR MUST FORWARD POWER REQUIREMENTS TO THE ELECTRICAL CONTRACTOR.
- NOTE: A FOURTH WIRE OF SAME SIZE AS THREE PHASE WIRES IS REQUIRED FOR GROUNDING PURPOSES TO MINIMIZE ELECTRICAL NOISE INTERFERENCE. THE GROUNDING WIRE MUST BE CONNECTED TO THE BUILDING ELECTRICAL SYSTEM GROUND.
- A MEANS TO AUTOMATICALLY DISCONNECT THE MAIN LINE PER POWER SUPPLY TO THE ELEVATOR PRIOR TO THE APPLICATION OF WATER IN THE ELEVATOR HOISTWAY WILL BE FURNISHED BY THE ELECTRICAL CONTRACTOR THIS MEANS SHALL NOT BE SELF RESETTING.
- DEDICATED 120 VOLT, 15 AMP SERVICE, ALONG WITH TELEPHONE CIRCUIT WHEN REQUIRED TO TERMINALS OF EACH REQUIRED CONTROLLER (AS LOCATED ON ENTRANCE PAGE) FOR THE FOLLOWING: (ADA PHONE PROVIDED)
- CAR LIGHT AND ALARM CIRCUIT WITH GFCI PROTECTION PER NEC/CEC.
- GROUP CONTROL, WHEN REQUIRED.

ACCESS TO THESE COMPONENTS WILL BE FROM INSIDE THE HOISTWAY. THIS WILL REQUIRE TK ELEVATOR TO BE ON SITE.

NOTE: IF STANDBY POWER IS SUPPLIED TO ELEVATOR, CAR LIGHT AND ALARM CIRCUIT AND GROUP CONTROL SERVICE MUST BE STANDBY POWER BACKED.

- LIGHTING (MINIMUM 200LUX/19FT. CANDLES) AND SWITCH, CONVENIENCE OUTLETS WITH GFCI PROTECTION PER NEC/CEC. LIGHTING IS REQUIRED AT THE PIT LEVEL AND THE CONTROLLER LANDING.
- A LIGHT SWITCH LOCATED 4'-0" ABOVE BOTTOM LANDING NEXT TO THE TOP RUNG OF THE LADDER.
- A LIGHT SWITCH LOCATED 4'-0" ABOVE THE CONTROLLER LANDING FLOOR.
- CONDUIT AND WIRING FROM HOISTWAY TO ELEVATOR MONITORING PANELS BY OTHERS.
- PROVIDE A POWER TRANSFER WARNING CONTACT THAT CLOSSES 20 SECONDS PRIOR TO TRANSFER IN EITHER DIRECTION AND IT OPENS WHEN TRANSFER IS COMPLETE.
- TOTAL FULL LOAD UP SPEED AMPS IS BASED ON 100% OF ELEVATOR CAPACITY, THE VALUE NEEDED FOR EMERGENCY POWER SIZING.
- THE HYDRAULIC MOTORS ARE RATED FOR INTERMITTENT DUTY (SEC. 620-13 AND 430-33). BRANCH CIRCUIT CONDUCTORS CAN BE SIZED FOR AN AMPACITY 90% OF THE MOTORS NAMEPLATE RATING AS DETERMINED BY (SEC. 430-22 [E])
- HEAT SENSOR REQUIRED AT CONTROLLER FLOOR TO ACTIVATE SHUNT. HEAT SENSOR IS TO BE LOCATED WITHIN 2'-0" OF THE SPRINKLER HEAD.

PRIMARY FIRE SERVICE LOCATED AT FLOOR: 1

ALTERNATE FIRE SERVICE LOCATION AT FLOOR: .

BREAKERS AND DISCONNECT PROVIDED BY TK ELEVATOR

150 AMP CIRCUIT BREAKER PROVIDED IN CONTROLLER BY TK ELEVATOR.

ELEVATOR DESIGNATOR	POWER SUPPLY	HORSE POWER	STARTING A.C. AMPS	TOTAL FULL LOAD UP SPEED MOTOR A.C. AMPS	RATED A.C. AMPS	* SHORT CIRCUIT CURRENT RATINGS (AT 600V OR LESS)
1	208	20	195	95	65.1	10,000 AMPS

*14 kA AND 600V OR LESS IF PROTECTED BY CLASS J FUSES (BY OTHERS)

*25 kA AND 480V OR LESS IF PROTECTED BY CLASS J FUSES (BY OTHERS)

*45 kA AND 240V OR LESS IF PROTECTED BY CLASS J FUSES (BY OTHERS)

GENERAL DATA

- A PLUMB HOISTWAY BUILT ACCORDING TO CODE AND SIZES SHOWN.
- ADEQUATE SUPPORT FOR JACK, GUIDE RAIL BRACKETS, AND BUFFERS (FOR REACTIONS SHOWN)
- HOISTWAY BARRICADES AND ALL CUTTING AND PATCHING TO INSTALL HOISTWAY ENTRANCES, SILLS, HALL FIXTURES, OIL, AND ELECTRIC LINES.
- PIT LADDER PER CAR (ACCORDING TO CODE) NOTE: MUST BE CLEAR OF ALL ELEVATOR EQUIPMENT.
- LEAVE OFF WALL PER ROUGH OPENING DIMENSIONS WHERE ENTRANCE IS INCLUDED. SEE INSTALLATION PROCEDURES FOR FRAME-TO-WALL INTERFACE DETAILS TO ENSURE CONFORMANCE WITH LABELED ENTRANCE INTERFACE CONSTRUCTION.
- AT CONTROLLER FLOOR, LEAVE OUT ENTIRE WALL. SEE ENTRANCE DRAWING FOR DETAILS. CONTROLLER @ FLOOR: 2
- POCKETS IN CORRIDOR WALL FOR HALL FIXTURES. NOTE: MUST BE LOCATED AS DIRECTED BY ELEVATOR CONTRACTOR
- SMOKE SENSORS (AS REQUIRED)
- ELEVATOR MEETS ASME A17.1 2019 CODE.
- A PROPERLY VENTED HOISTWAY AND MAINTAINED BETWEEN 32°F (0°C) AND 104°F (40°C) WITH NON-CONDENSING HUMIDITY OF 10-95% PER LOCAL BUILDING CODE.
- SUMP PIT OR DRAIN AS REQUIRED BY LOCAL CODE BY GENERAL CONTRACTOR.
- A HOIST BEAM SHALL BE PROVIDED (BY G.C.) WITH A CAPACITY TO SUPPORT 5,000 LB [22.2KN] POINT LOAD PER CAR. THE BEAM SHALL BE SECURELY FASTENED TO THE BUILDING. MAINTAIN A MINIMUM OF 2" BETWEEN TOP OF THE BEAM AND HOISTWAY CEILING.

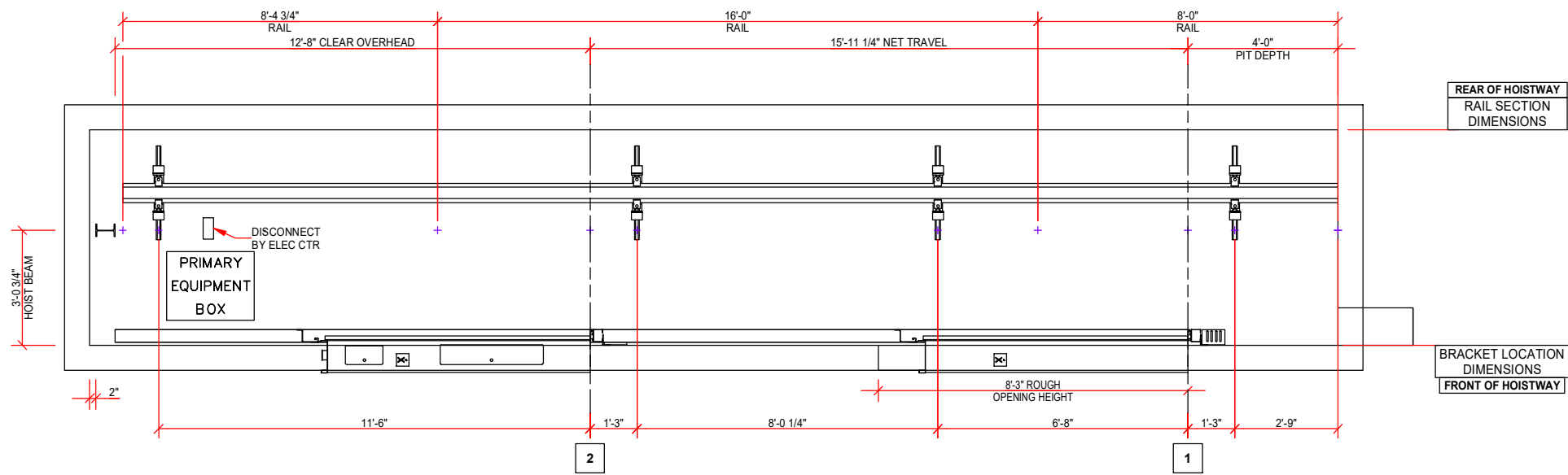
THIS DRAWING AND ALL INFORMATION THEREON IS THE PROPRIETARY PROPERTY OF TK ELEVATOR AND MUST NOT BE MADE PUBLIC OR COPIED. THIS DRAWING IS LOANED SUBJECT TO RETURN ON DEMAND AND IS NOT TO BE USED DIRECTLY OR INDIRECTLY, IN ANY MANNER DETRIMENTAL TO THE INTEREST OF TK ELEVATOR.

FOR: 101 FRANKLIN ST
ADDRESS: 101 FRANKLIN ST
CITY: TAMPA, FL 33602

TK Elevator

DRAWN	REV	JOB NUMBER	DATE	SHEET
VZ	C	1777-244-01A	1/29/2025	4 OF 7

IF A CUT STARTER RAIL IS CALLED FOR IN THE STACK, CONFIRM THE NUMBER OF SPLICES PRIOR TO CUTTING



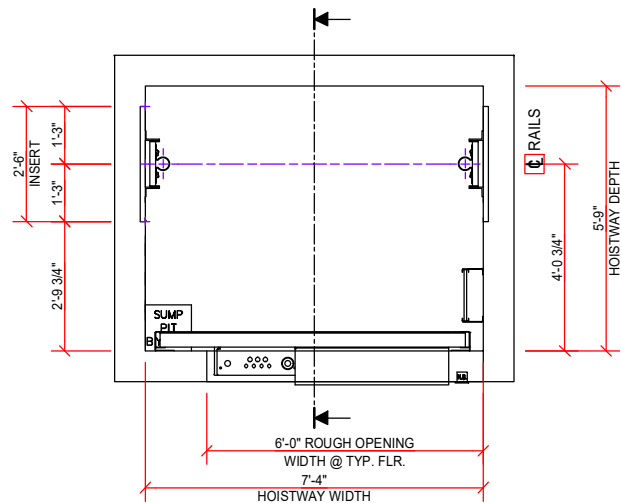
RAIL STACK SECTION VIEW FOR ELEVATOR: 1

CAR RAIL LINE LENGTH QUANTITY (6) - PER CAR	
LENGTH	QUANTITY
8'-0"	2
16'-0"	2
8'-4 3/4"	2

FLOOR TO FLOOR TRAVEL	
FLOOR TO FLOOR	TRAVEL
1-2	15'-11 1/4"
NET TRAVEL	15'-11 1/4"

CAR RAIL LINE BRACKETS AND INSERT LOCATIONS - PER CAR	
LOCATION	DESCRIPTION
15'-9"	MAX. UNSUPPORTED RAIL BRACKET SPACING
11'-6"	ABOVE TOP FLOOR
1'-3"	BELOW 1-2
6'-8"	ABOVE 1

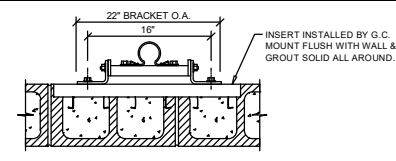
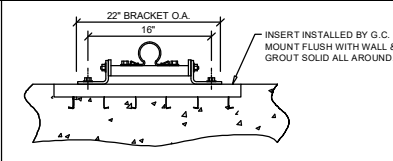
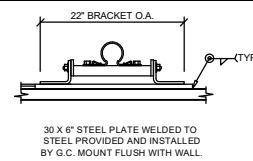
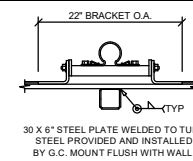
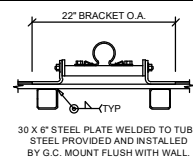
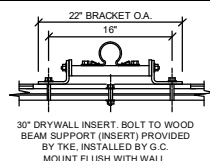
RAILS AND BRACKETS - TOTAL QUANTITY		
RAILS	(5) 16 FT	
SPLICES	4	
BRACKETS	LEFT HAND	RIGHT HAND
QTY:	4	4
RAIL TO WALL:	2 3/4"	2 3/4"



"PLEASE REFERENCE ASME A17.1 (2.2.2) FOR SUMP PIT REQUIREMENTS" REFER TO SECTION SHEET FOR CONTROLLER ENTRANCE ROUGH OPENING WIDTH

"WHERE DISTANCE BETWEEN FLOORS EXCEEDS THE MAXIMUM BRACKET SPAN, BRACKET SUPPORT MUST BE PROVIDED MIDWAY. BRACKET SUPPORT WILL NEED TO BE SUPPLIED BY OTHERS TO ALLOW FOR RAIL ATTACHMENT. INSIDE SUPPORT SHALL NOT BE RECESSED BEHIND WALL SYSTEM AND SHALL NOT BE PROUD BY MORE THAN 1/4" AT ANY POINT. COORDINATE WITH TK ELEVATOR SUPPORT/OPERATIONS MANAGER"

TYPICAL SURFACE MOUNTING DETAILS



AT ALL FLOOR LOCATIONS

THIS DRAWING AND ALL INFORMATION THEREON IS THE PROPRIETARY PROPERTY OF TK ELEVATOR AND MUST NOT BE MADE PUBLIC OR COPIED. THIS DRAWING IS LOANED SUBJECT TO RETURN ON DEMAND AND IS NOT TO BE USED DIRECTLY OR INDIRECTLY, IN ANY MANNER DETRIMENTAL TO THE INTEREST OF TK ELEVATOR.

FOR: 101 FRANKLIN ST
ADDRESS: 101 FRANKLIN ST
CITY: TAMPA, FL 33602

TK Elevator

DRAWN	REV	JOB NUMBER	DATE	SHEET
VZ	C	1777-244-01A	1/29/2025	5 OF 7

PLEASE REFERENCE THE RAIL STACK SHEET OF THIS PACKAGE FOR BUILDING LANDING MATRIX

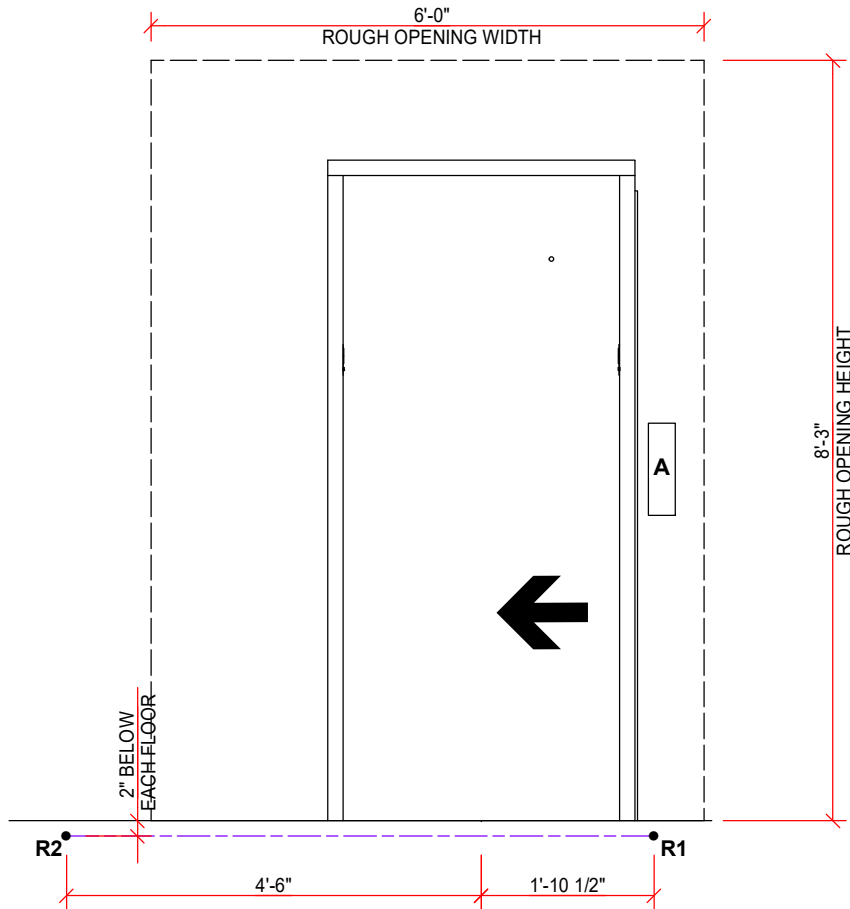
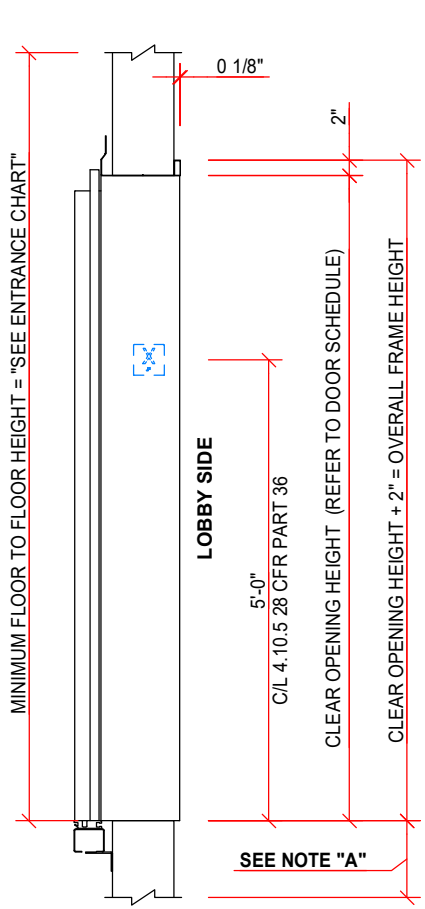
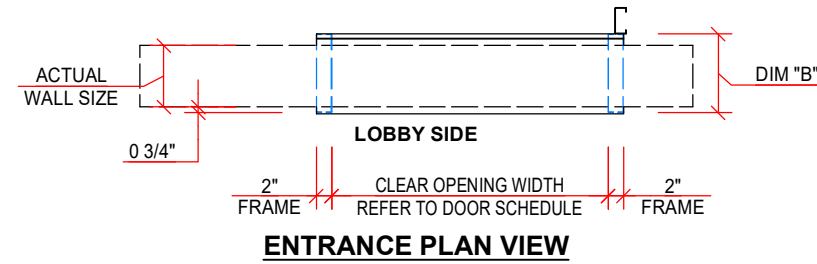
ELEVATOR: 1		FRONT ENTRANCE SCHEDULE		
FLOOR	ENTRANCE DIMS.	WALL TYPE	WALL SIZE	
			ACTUAL	OA. FRAME "B" DIM.
2	7'-0" H X 3'-0" W	TBD	TBD	TBD
1	7'-0" H X 3'-0" W	TBD	TBD	TBD

FOR ELEVATOR: 1

TOTAL WEIGHT	ELEVATOR 1	ELEVATOR
CAB AND HALL DOORS	282 LBS	

FEATURES OF YOUR ENTRANCES		
FEATURES	FINISH	LOCATION
DOOR OPEN STRUT BUMPERS:	N/A	@1,2
KICKPLATES:	_____	@1,2
BINDERS:	_____	@1,2
SILL FINISH:	ALUMINUM	@1,2

FEATURES OF ENTRANCES	DATA
SILL MAXIMUM WHEEL LOADS	625 LBS
KEYHOLES TO BE	INCLUDED
THIS FRAME HAS A WARNOCK HERSEY LABEL OF	2 HOURS
DUST COVERS	NOT INCLUDED



HALL FIXTURES ARE FOR REPRESENTATION ONLY. FOR ACTUAL LOCATION OF POCKETS FOR HALL FIXTURES, CONTACT ELEVATOR CONTRACTOR.

FRONT ENTRANCE HALL FIXTURES		
ITEM	DESCRIPTION	FLOOR
A	HALL STATION	TYPICAL

NOTES:
 GENERAL CONTRACTOR RESPONSIBLE FOR HOISTWAY REINFORCING AT FLOOR SLAB BEFORE INSTALLATION OF ENTRANCE FRAMES. MINIMUM OF 4" HIGH X 8" WIDE REINFORCED CONCRETE, REINFORCED FILLED BLOCK, WOOD OR STEEL BEAMS AT THE WALL LINE ON EACH SIDE OF OPENING REQUIRED FOR ANCHORING SILL SUPPORT ASSEMBLY. REINFORCING TO BE LOCATED WITH RESPECT TO REACTION POINTS. REFERENCE INSTALLATION DRAWINGS 494JT, AND 494JV ARE AVAILABLE UPON REQUEST.

REACTIONS (LBS.) DUE TO LOADS ON DOOR PANELS, APPROX. HORIZONTAL LOADS AND LOCATIONS TO BUILDING SHOWN PER ASME A17.1 PART II.
 THE SPECIFIED LOADS ARE CONSIDERED IMPACTED.

NOTE "A":
 8" MINIMUM STRUCTURAL SUPPORT FOR SILL INSTALLATION

ENTRANCE CHART	
M721 ENTRANCE:	
CENTER OPENING AND 1 SPEED = FRAME OPENING + 1'-3"	
2 SPEED = FRAME OPENING + 1'-5"	

R2	258
R1	620
CASE 1	
DOOR REACTION	

ENTRANCE LEFT SIDE VIEW

ENTRANCE TYPE : M721
 FOR ELEVATOR 1

ENTRANCE ELEVATION VIEW AT TYPICAL FLOOR

1 SPEED
 RIGHT HAND FRONT ENTRANCE
 FOR ELEVATOR 1

THIS DRAWING AND ALL INFORMATION THEREON IS THE PROPRIETARY PROPERTY OF TK ELEVATOR AND MUST NOT BE MADE PUBLIC OR COPIED. THIS DRAWING IS LOANED SUBJECT TO RETURN ON DEMAND AND IS NOT TO BE USED DIRECTLY OR INDIRECTLY, IN ANY MANNER DETRIMENTAL TO THE INTEREST OF TK ELEVATOR.

FOR: 101 FRANKLIN ST
 ADDRESS: 101 FRANKLIN ST
 CITY: TAMPA, FL 33602

TK Elevator

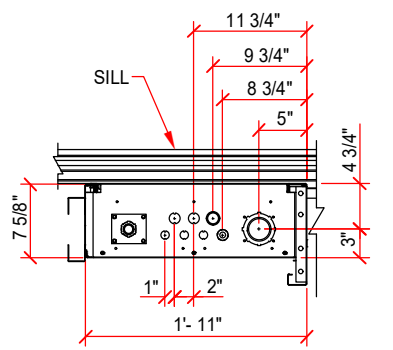
DRAWN	REV	JOB NUMBER	DATE	SHEET
VZ	C	1777-244-01A	1/29/2025	6 OF 7

ENTRANCE WALL DIMENSIONS		
DIM "C" MIN. WALL THK. REQUIRED	DIM "D" WALL FACE TO FRAME FACE	DIM "E" SHAFT LINER THICKNESS
8 1/2"	3/4"	REFER TO NOTE B

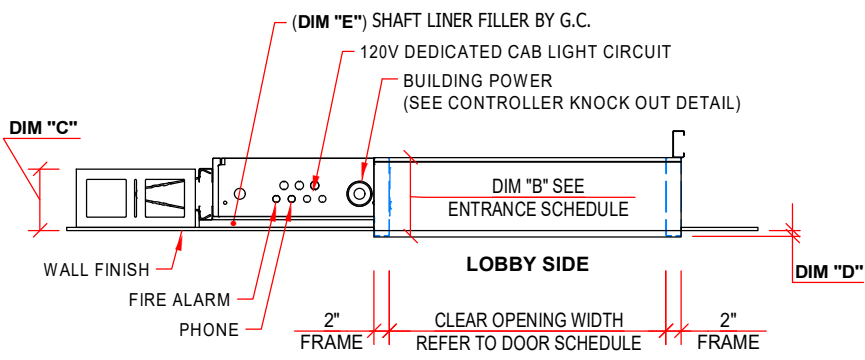
PLEASE REFERENCE THE RAIL STACK SHEET OF THIS PACKAGE FOR BUILDING LANDING MATRIX

ELEVATOR: 1 FRONT ENTRANCE SCHEDULE				
FLOOR	ENTRANCE DIMS.	WALL TYPE	WALL SIZE	
			ACTUAL	OA. FRAME "B" DIM.
2	7'-0" H X 3'-0" W	TBD	TBD	TBD
1	7'-0" H X 3'-0" W	TBD	TBD	TBD

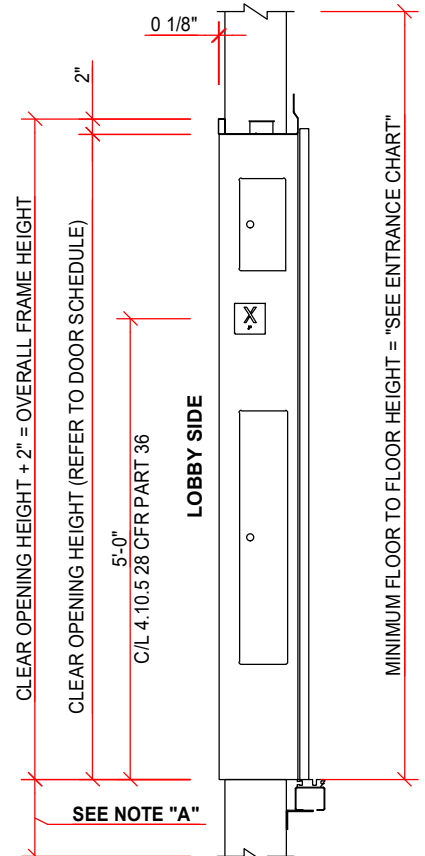
FOR ELEVATOR: 1



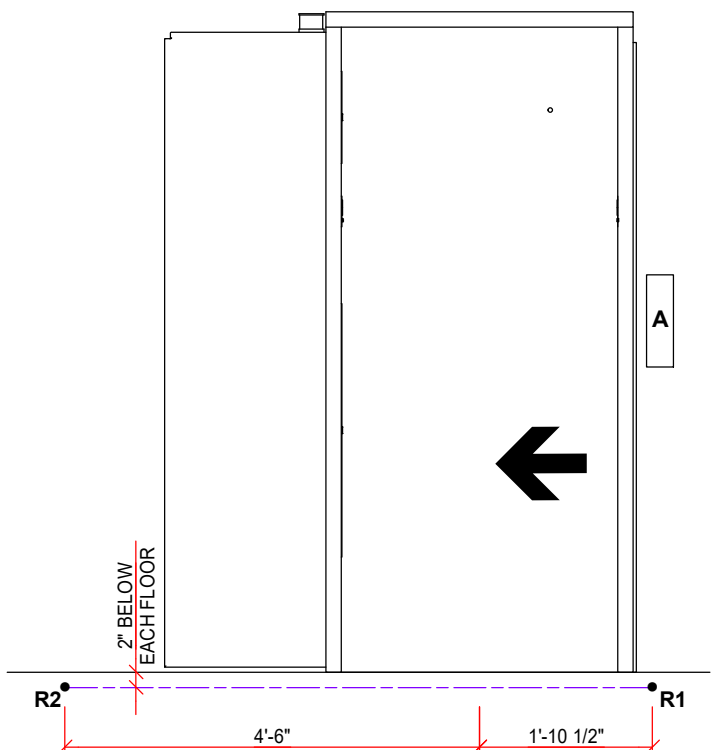
**LOBBY SIDE
CONTROLLER KNOCKOUT DETAIL**



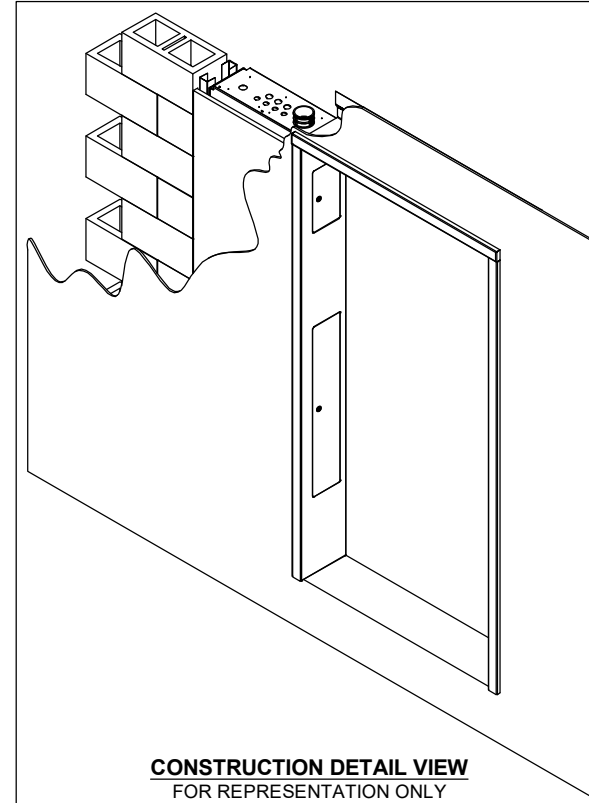
ENTRANCE PLAN VIEW



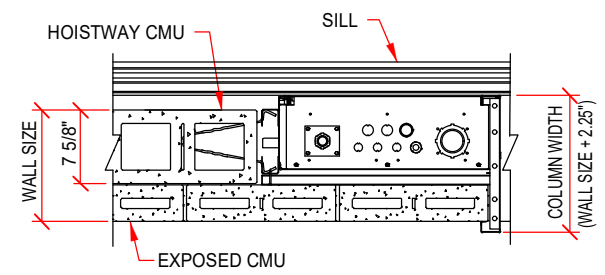
ENTRANCE SIDE VIEW
ENTRANCE TYPE : M721
FOR ELEVATOR 1



ENTRANCE ELEVATION VIEW
1 SPEED
RIGHT HAND FRONT ENTRANCE
FOR ELEVATOR 1
LEAVE OFF ENTIRE WALL AT FLOOR 2
FOR FRAME AND CONTROLLER INSTALLATION



CONSTRUCTION DETAIL VIEW
FOR REPRESENTATION ONLY



**LOBBY SIDE
FRONT WALL CONDITION FOR EXPOSED MASONRY**

NOTES:
GENERAL CONTRACTOR RESPONSIBLE FOR HOISTWAY REINFORCING AT FLOOR SLAB BEFORE INSTALLATION OF ENTRANCE FRAMES. MINIMUM OF 4" HIGH X 8" WIDE REINFORCED CONCRETE, REINFORCED FILLED BLOCK, WOOD OR STEEL BEAMS AT THE WALL LINE ON EACH SIDE OF OPENING REQUIRED FOR ANCHORING SILL SUPPORT ASSEMBLY. REINFORCING TO BE LOCATED WITH RESPECT TO REACTION POINTS. REFERENCE INSTALLATION DRAWINGS 494JT, AND 494JV ARE AVAILABLE UPON REQUEST.

REACTIONS (LBS.) DUE TO LOADS ON DOOR PANELS, APPROX. HORIZONTAL LOADS AND LOCATIONS TO BUILDING SHOWN PER ASME A17.1 PART II.

THE SPECIFIED LOADS ARE CONSIDERED IMPACTED.
ELECTRICAL CONTRACTOR NOTE:
3 PHASE POWER, 120V 15 AMP CIRCUIT, FIRE ALARM AND PHONE TO BE ROUTED TO THE TOP OF THE CONTROLLER AT THE CONTROLLER LANDING LEVEL. AN ADDITIONAL 120V 20 AMP SINGLE PHASED FUSED DISCONNECT MOUNTED IN HOISTWAY BY THE PRIMARY EQUIPMENT BOX.

NOTE A:
8" MINIMUM STRUCTURAL SUPPORT FOR SILL INSTALLATION

NOTE B:
SHAFT LINER THICKNESS AND TYPE TO BE DETERMINED AND ADVISED BY G.C./ ARCHITECT TO ENSURE LOCAL FIRE RATING IS ACHIEVED.

R2	258
R1	620
	CASE 1
	DOOR REACTION

ENTRANCE CHART	
M721 ENTRANCE:	
CENTER OPENING AND 1 SPEED = FRAME OPENING + 1'-3"	
2 SPEED = FRAME OPENING + 1'-5"	

THIS DRAWING AND ALL INFORMATION THEREON IS THE PROPRIETARY PROPERTY OF TK ELEVATOR AND MUST NOT BE MADE PUBLIC OR COPIED. THIS DRAWING IS LOANED SUBJECT TO RETURN ON DEMAND AND IS NOT TO BE USED DIRECTLY OR INDIRECTLY, IN ANY MANNER DETRIMENTAL TO THE INTEREST OF TK ELEVATOR.

FOR: 101 FRANKLIN ST
ADDRESS: 101 FRANKLIN ST
CITY: TAMPA, FL 33602

TK Elevator

DRAWN	REV	JOB NUMBER	DATE	SHEET
VZ	C	1777-244-01A	1/29/2025	7 OF 7